

PRELIMINARY
NOT FOR FLIGHT
08-11-20

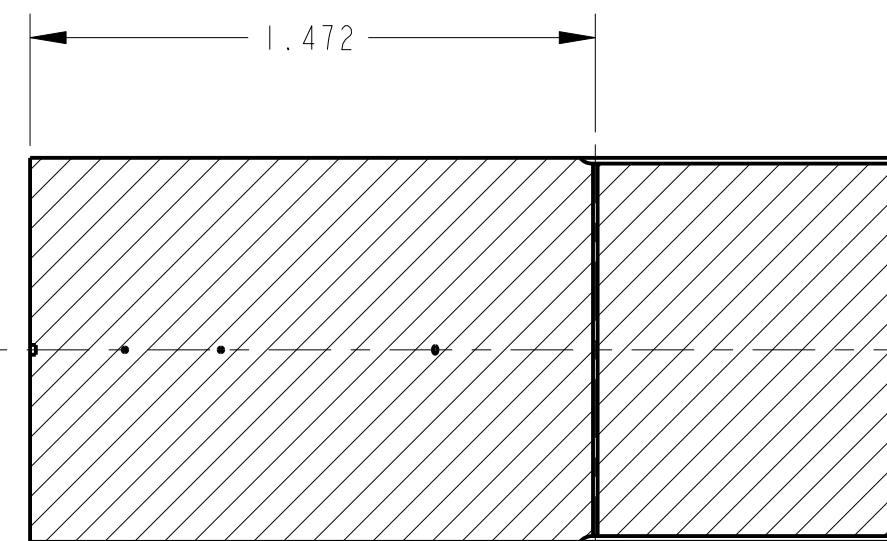
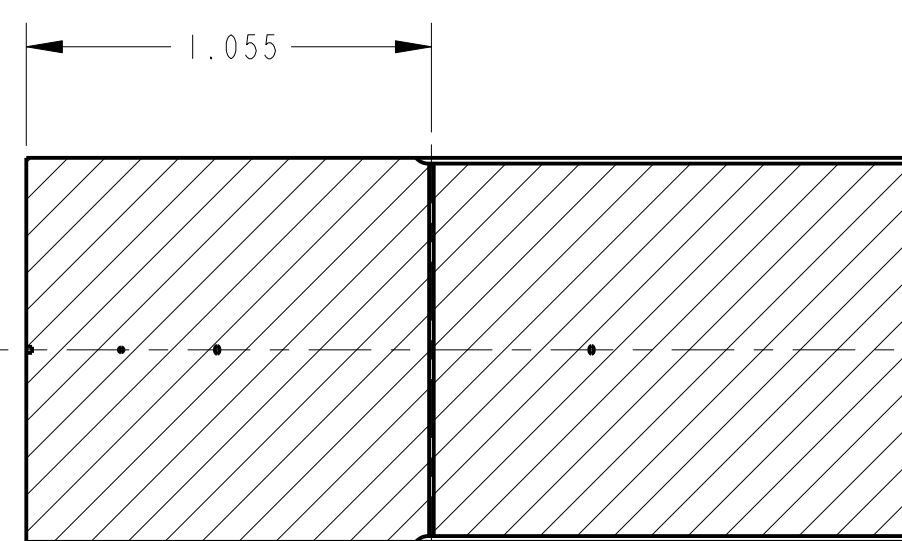
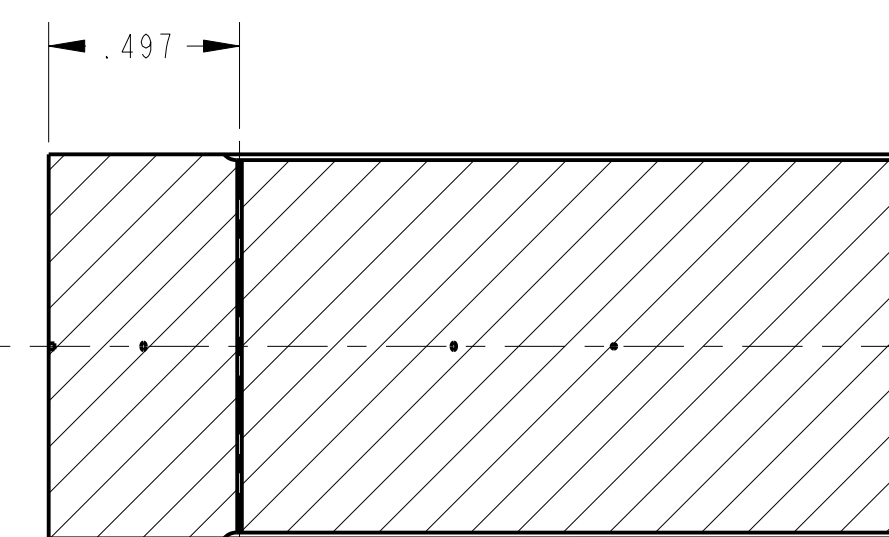
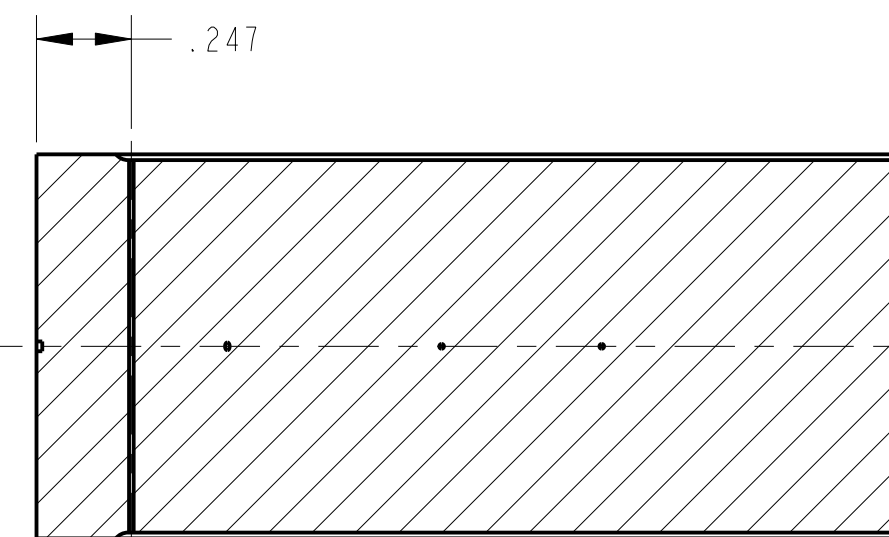
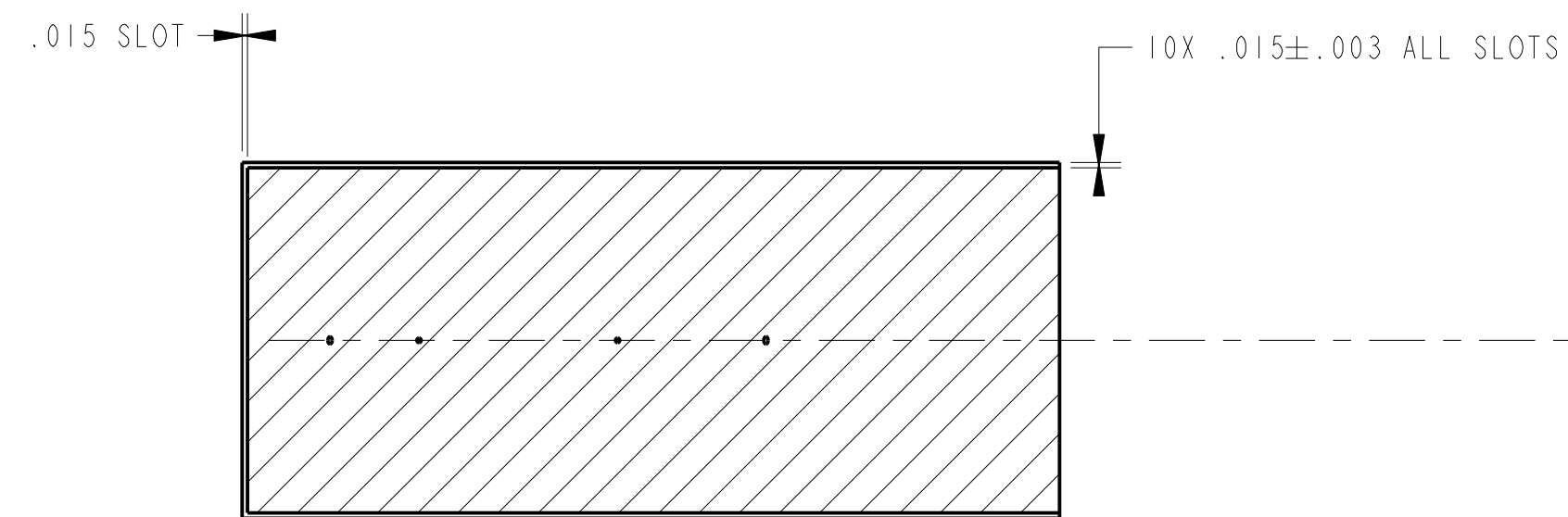
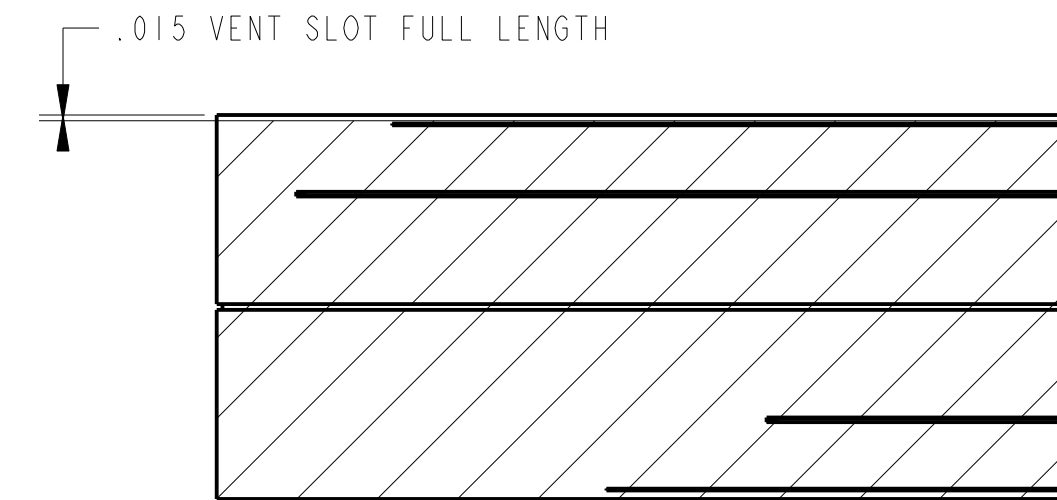
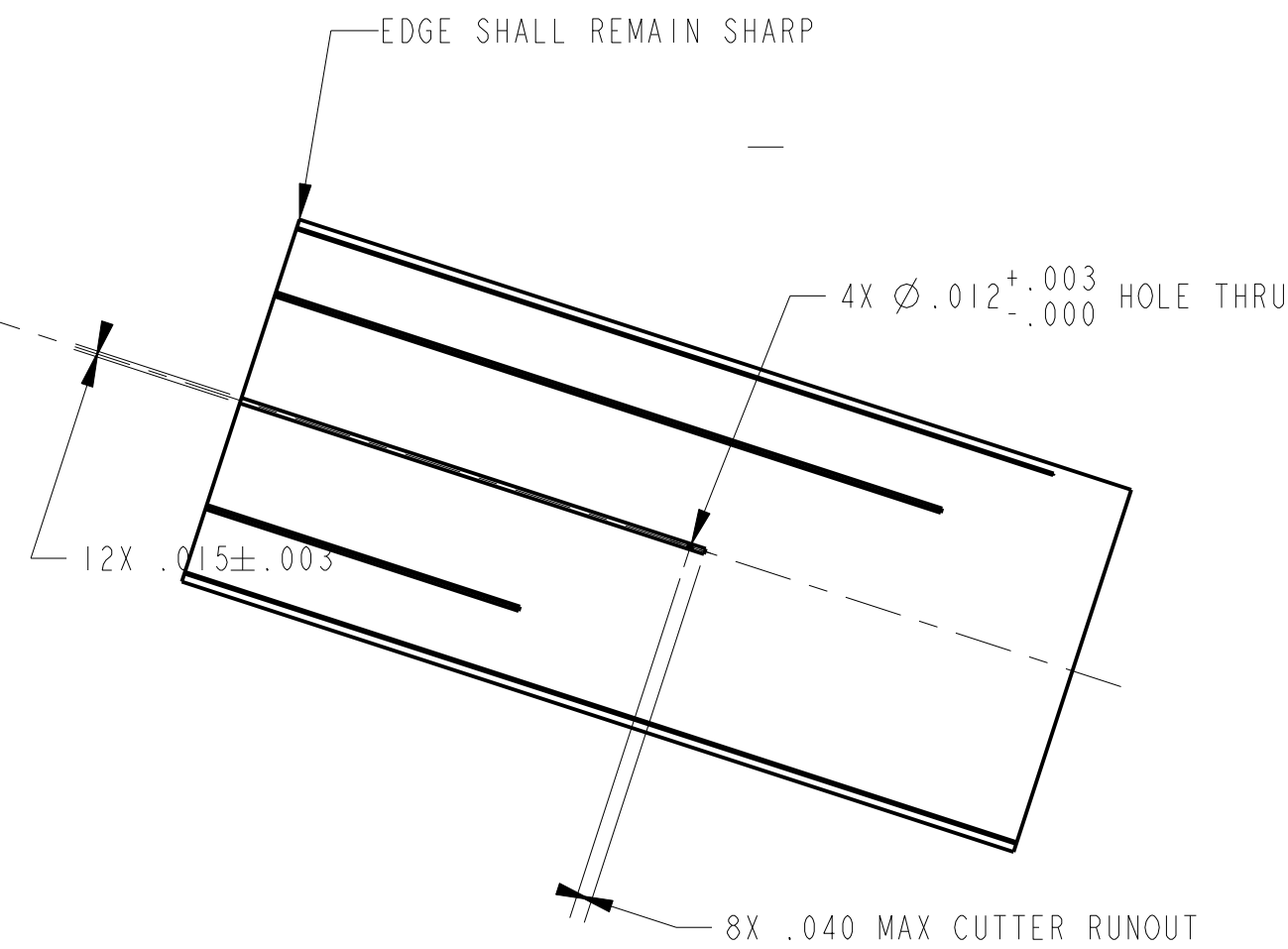
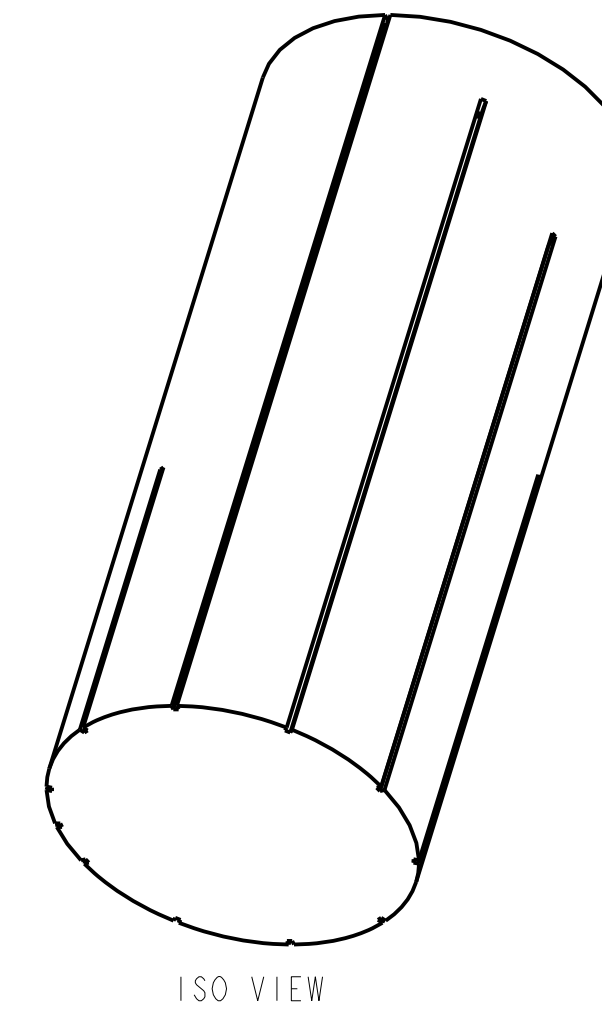
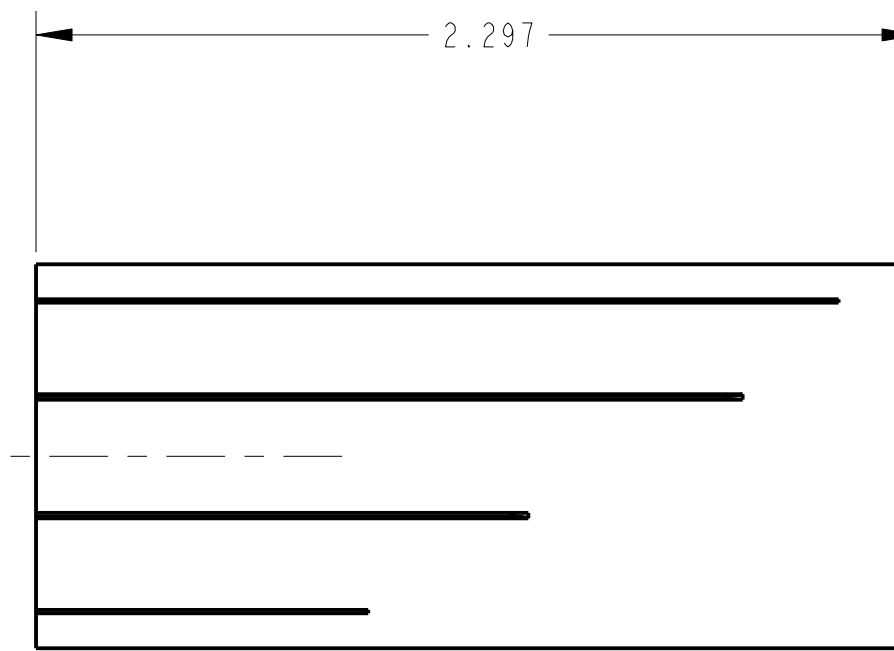
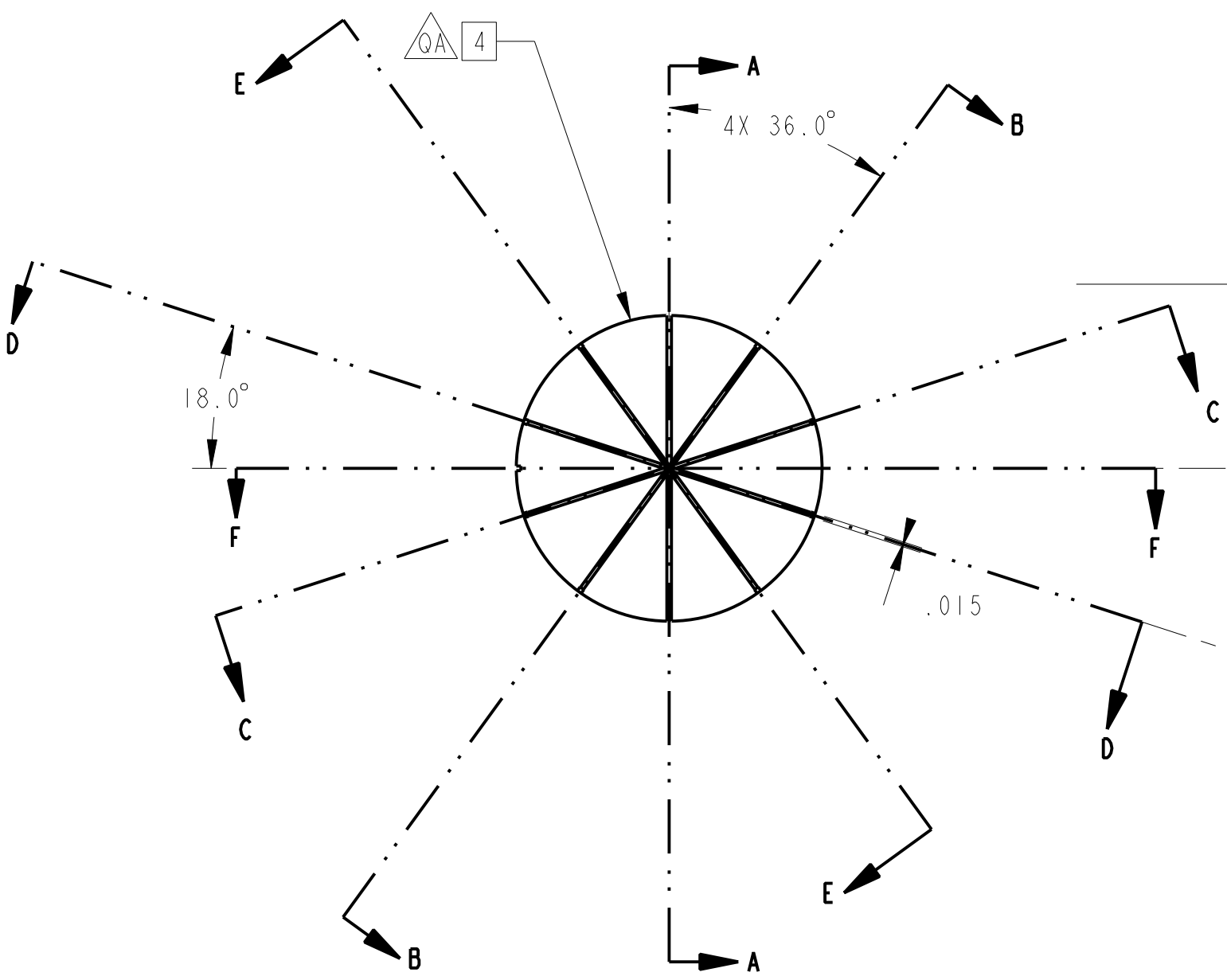
THIS CAD DOCUMENT IS MAINTAINED
IN THE LARC INTRALINK DATABASE.

NOTES:

1. APPLICABLE STANDARDS/SPECIFICATIONS:
MIL-STD-100, DOD STANDARD PRACTICE FOR ENGINEERING DRAWINGS,
ASME Y14.100M, ENGINEERING DRAWING PRACTICES,
MIL-T-31000, TECHNICAL DATA PACKAGES.
2. BREAK ALL SHARP EDGES AND REMOVE ALL BURRS.
3. SURFACE ROUGHNESS SHALL BE 250 RMS OR BETTER.
4. SHAFT DIMENSION TO BE 0.0005 TO 0.0010 LARGER THAN HOLE CREATED IN 1250711
5. QA VERIFY ALL DIMENSIONS MARKED $\triangle OA$

ZONE	REV	DESCRIPTION	DRAWN	CHECKED	LEAD ENGR	BRANCH	DATE

CAGE 25305 DWG. NO. 1250721



QTY	RECD	CAGE CODE	PART OR IDENTIFYING NO.	NOMENCLATURE OR DESCRIPTION	MATERIAL SPECIFICATION	ITEM NO.
1			-3	THERMOCOUPLE PLUG	MX4926 LAMINATE CARBON PHENOLIC	2
1			-1	THERMOCOUPLE PLUG	MX4926 CHOPPED MOLDED CARBON PHENOLIC	1

PART DASH NO.				APPLICATION		TREATMENT		CONTRACT NO.		NATIONAL AERONAUTICS & SPACE ADMINISTRATION LANGLEY RESEARCH CENTER HAMPTON, VA 23681-2199	
-3	1	1	1250720-3	CEV TPS ADP	FINISH						
-1	1	1	1250720-1	CEV TPS ADP							
				UNLESS OTHERWISE SPECIFIED DIMENSIONS ARE IN INCHES. TOLERANCES: DECIMALS: .XX ± .03 .XXX ± .010 ANGULAR: .X ± .5° DO NOT SCALE DRAWING		DRAWN: MICHAEL E. COLEMAN CHECKED:		APPROVALS: [Signature] DATE: 08-11-20		TITLE: THERMOCOUPLE PLUG INSTRUMENTED THERMOCOUPLE PLUG CEV TPS ADP	
				SIMILAR TO:		SPECIAL MARKING SYM:		DESIGNER:		SCALE: 2/1	
				PART DASH NO.		QTY RECD PER ASSY		DRAWING NO.: 1250721		REV. NO.: -	
				APPLICATION		BRANCH		SHEET 1 OF 1			