

4

3

2

1

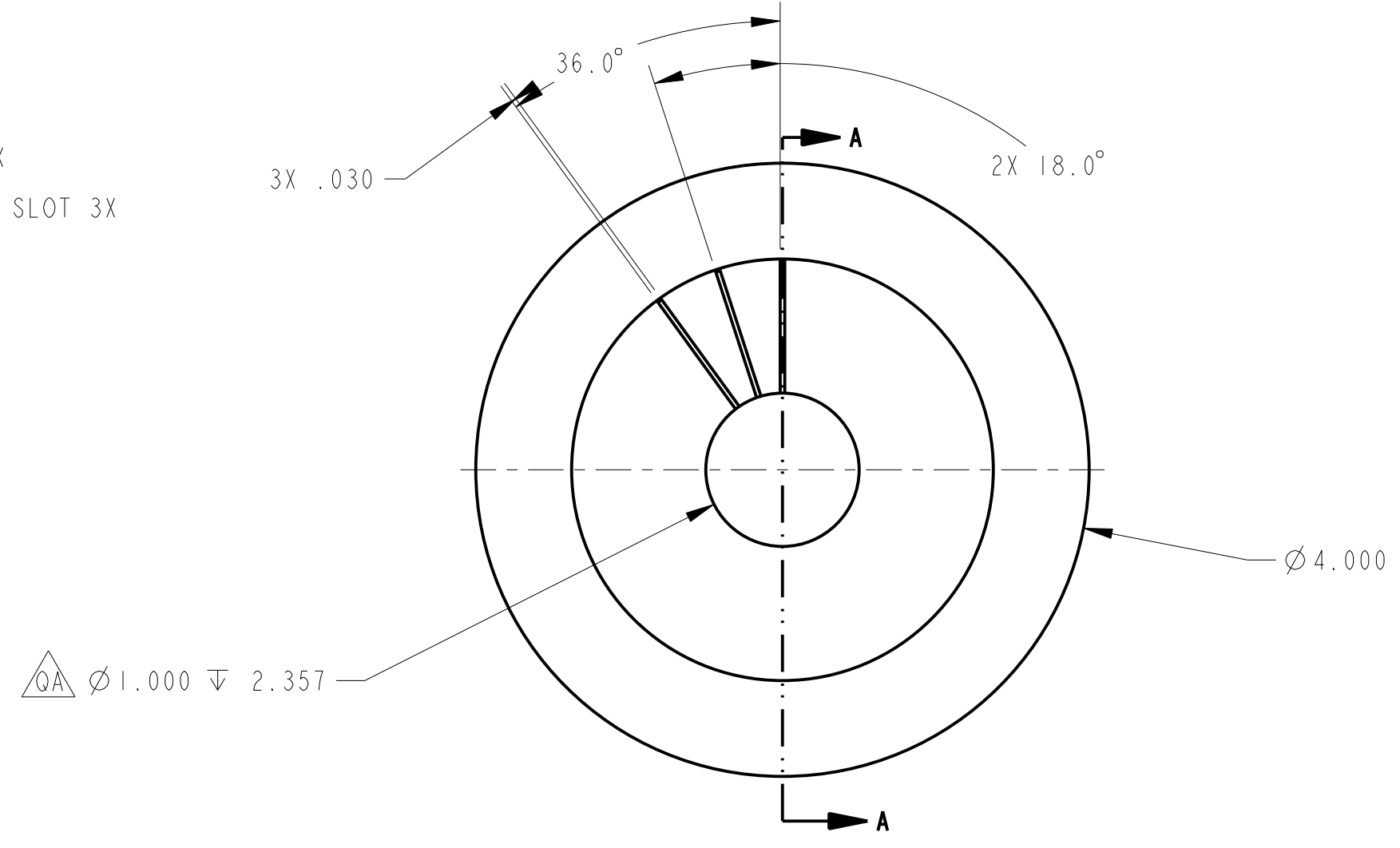
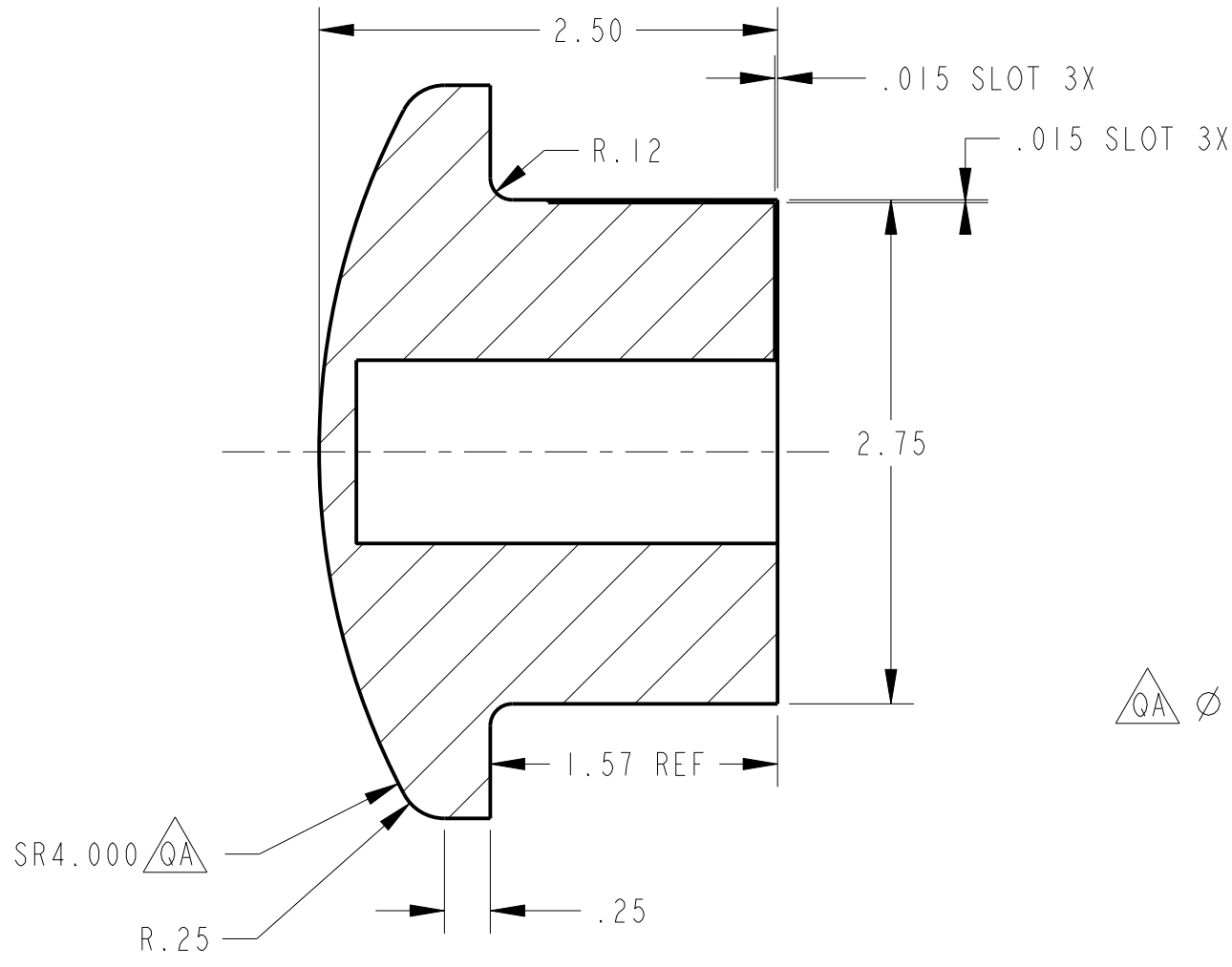
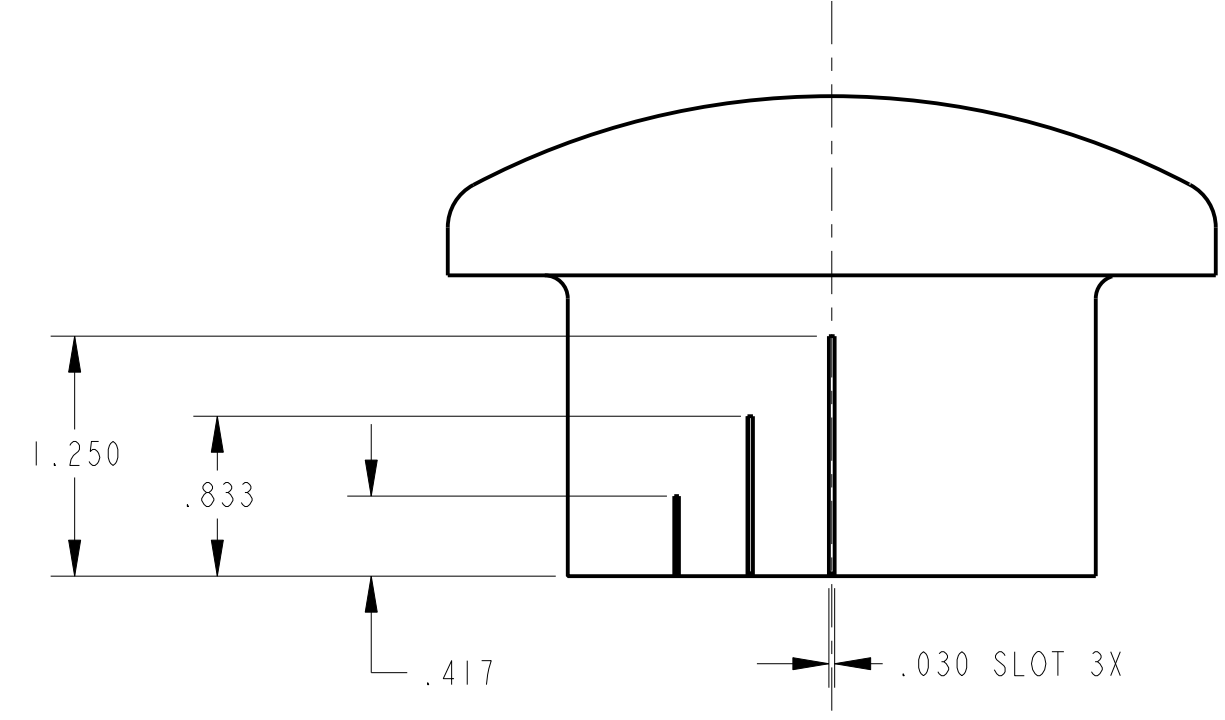
NOTES:

- 1. APPLICABLE STANDARDS/SPECIFICATIONS:  
ASME Y14.100-2004, ENGINEERING DRAWING PRACTICES,  
MIL-DTL-31000B, TECHNICAL DATA PACKAGES.
- 2. BREAK ALL SHARP EDGES AND REMOVE ALL BURRS.
- 3. SURFACE ROUGHNESS SHALL BE 250 RMS OR BETTER.
- 4. QA VERIFY ALL DIMENSIONS MARKED  $\triangle QA$

REVISION HISTORY							
ZONE	REV	DESCRIPTION	DRAWN	CHECKED	LEAD ENGR	BRANCH	DATE

THIS CAD DOCUMENT IS MAINTAINED  
IN THE LARC INTRALINK DATABASE.

**PRELIMINARY**  
NOT FOR FLIGHT  
08-11-24



QTY RECD	CAGE CODE	PART OR IDENTIFYING NO.	NOMENCLATURE OR DESCRIPTION	MATERIAL SPECIFICATION	ITEM NO.
		-3	THERMAL PENETRATION SAMPLE	MX4926 LAMINATE CARBON PHENOLIC	
		-1	THERMAL PENETRATION SAMPLE	MX4926 CHOPPED MOLDED CARBON PHENOLIC	1

PARTS LIST

UNLESS OTHERWISE SPECIFIED DIMENSIONS ARE IN INCHES. TOLERANCES: DECIMALS: .XX ± .03 .XXX ± .010 ANGULAR: .X ± .5° DO NOT SCALE DRAWING.		CONTRACT NO.		NATIONAL AERONAUTICS & SPACE ADMINISTRATION LANGLEY RESEARCH CENTER HAMPTON, VIRGINIA 23681-2199	
-3	1250715-3	CEV TPS ADP	APPROVAL	DATE	TITLE
-1	1250715-1	CEV TPS ADP	MICHAEL E. COLEMAN	08-11-24	INSTRUMENTED SAMPLE ASSY CEV TPS ADP
PART DASH NO.	NEXT PER ASSY	FINAL	DESIGNER	LEAD ENGR	SCALE
					1/1
			SIMILAR TO	SPECIAL MARKING SYM	CAGE CODE
					25305
					DWG NO.
					1250719
					REV.
					-
					CALC. WT. ACT. WT.
					SHEET 1 OF 1

4

3

2

1

SH REV -  
 DWG NO 1250719  
 CAGE CODE 25305