

4

3

2

1

NOTES:

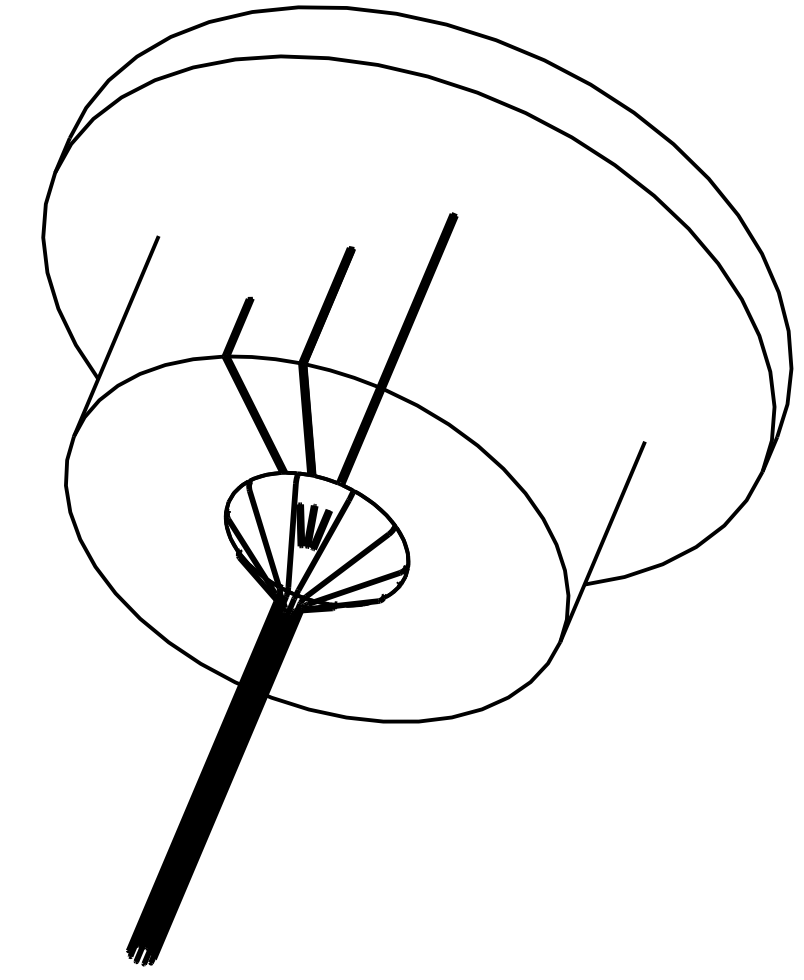
1. APPLICABLE STANDARDS/SPECIFICATIONS:
ASME Y14.100-2004, ENGINEERING DRAWING PRACTICES,
MIL-DTL-31000B, TECHNICAL DATA PACKAGES.

- 2 ENSURE THAT LAMINATE PLY ALIGNS WHEN PRESSING PLUG INTO SAMPLE
- 3 SECURE PLUG AND PROVIDE FLOW BARRIER BY APPLYING BEAD OF DEVCON 14310 EPOXY TO FULL CIRCUMFRENCE OF PLUG/SAMPLE INTERFACE AS SHOWN
- 4 SECURE THERMOCOUPLE WIRES TO SAMPLE USING CERAMABOND 569, AVOID TC JUNCTION
- 5 SECURE TC WIRE INSULATING SLEEVES USING DEVCON 14310 EPOXY

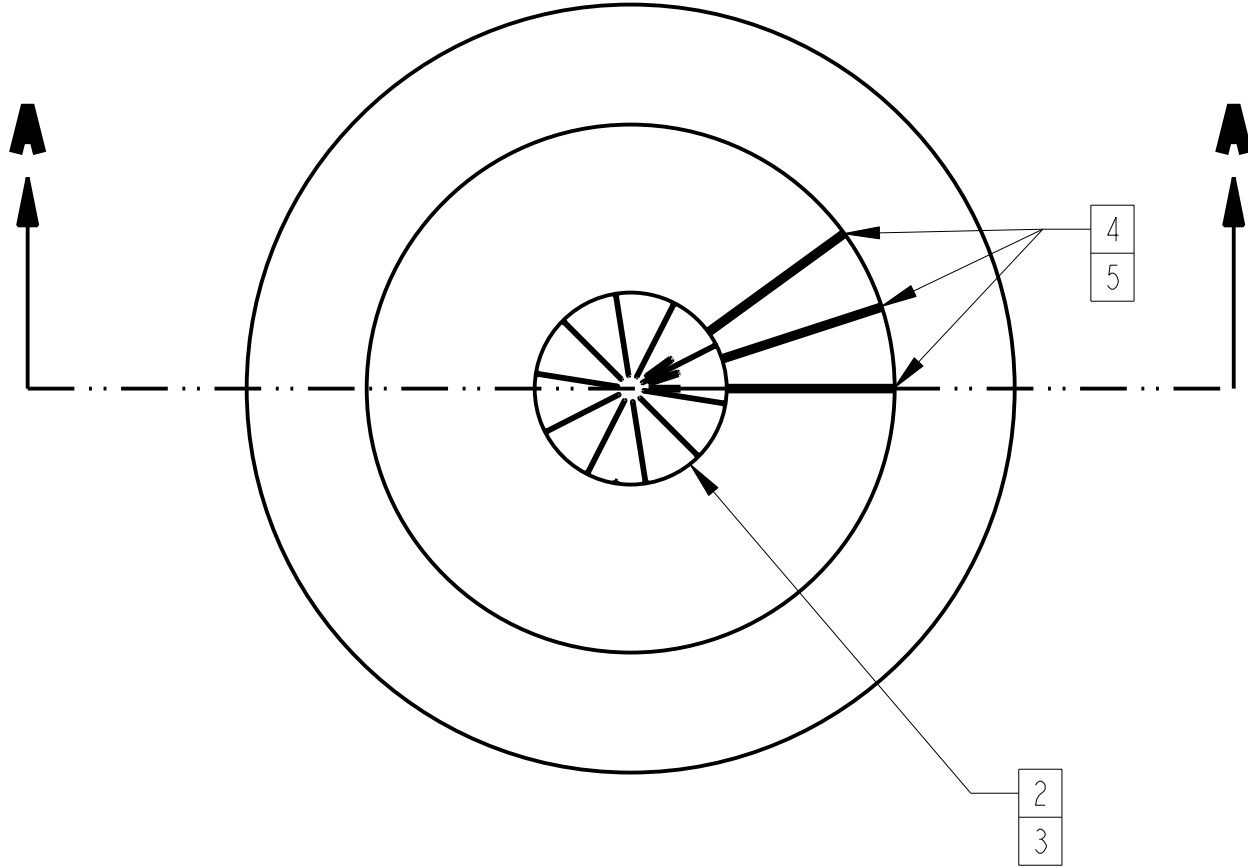
REVISION HISTORY							
ZONE	REV	DESCRIPTION	DRAWN	CHECKED	LEAD ENGR	BRANCH	DATE

THIS CAD DOCUMENT IS MAINTAINED
IN THE LARC INTRALINK DATABASE.

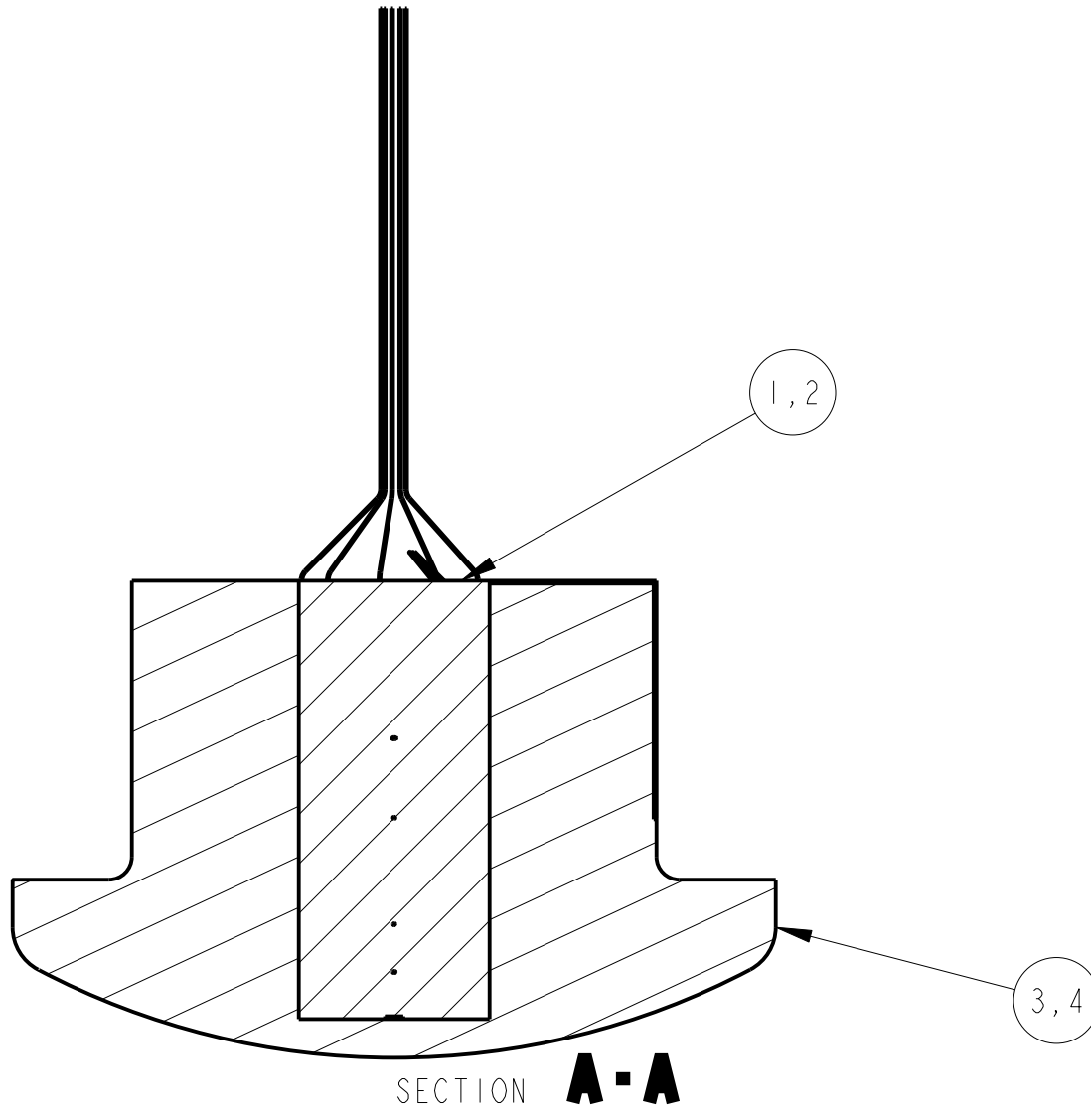
PRELIMINARY
NOT FOR FLIGHT
08-11-19



ISO VIEW



INSULATE BARE WIRES
 INSTALL FBGS-R-30 (RED) SLEEVING ON TYPE K THERMOCOUPLE NEGATIVE (-) LEADS
 INSTALL FBGS-Y-30 (YELLOW) SLEEVING ON TYPE K THERMOCOUPLE POSITIVE (+) LEADS



SECTION A-A

QTY	RECD	CAGE CODE	PART OR IDENTIFYING NO.	NOMENCLATURE OR DESCRIPTION	MATERIAL SPECIFICATION	ITEM NO.
AR	AR	14310		"2 TON" EPOXY	EPOXY	9
AR	AR	CERAMABOND 569		CERAMIC ADHESIVE	ALUMINA BASED ADHESIVE	8
AR	AR	FBGS-R-30		INSULATING SLEEVE, RED	FIBERGLASS	7
AR	AR	FBGS-Y-30		INSULATING SLEEVE, YELLOW	FIBERGLASS	6
3	3			TYPE K THERMOCOUPLE	CHROMEL-ALUMEL	5
	1	1250719-3		MX4926 LAMINATE CARBON PHENOLIC SAMPLE	MX4926 CARBON PHENOLIC	4
	1	1250719-1		MX4926 CHOPPED MOLDED CARBON PHENOLIC SAMPLE	MX4926 CARBON PHENOLIC	3
	1	1250720-3		MX4926 LAMINATE CARBON PHENOLIC INSTRUMENTED PLUG ASSY		2
	1	1250720-1		MX4926 CHOPPED MOLDED CARBON PHENOLIC INSTRUMENTED PLUG ASSY		1

PARTS LIST

UNLESS OTHERWISE SPECIFIED DIMENSIONS ARE IN INCHES. TOLERANCES: DECIMALS ANGULAR .XX ± .03 .X ± .5° .XXX ± .010 DO NOT SCALE DRAWING.		CONTRACT NO.		NATIONAL AERONAUTICS & SPACE ADMINISTRATION LANGLEY RESEARCH CENTER HAMPTON, VIRGINIA 23681-2199	
TREATMENT		APPROVAL	DATE	TITLE	
FINISH		MICHAEL E. COLEMAN	08-11-19	INSTRUMENTED SAMPLE ASSY ARCJET COUPON CEV TPS ADP	
PART DASH NO.	NEXT QTY PER ASSY	FINAL	NEXT ASSY	USED ON	SCALE
					1/1
APPLICATION		SIMILAR TO	SPECIAL MARKING SYM	BRANCH	CALC. WT. ACT. WT. SHEET 1 OF 1

REV -
SH -
1250715
DWG NO
25305
CAGE CODE

4

3

2

1