

U.S. DEPARTMENT OF COMMERCE



MINORITY BUSINESS DEVELOPMENT AGENCY

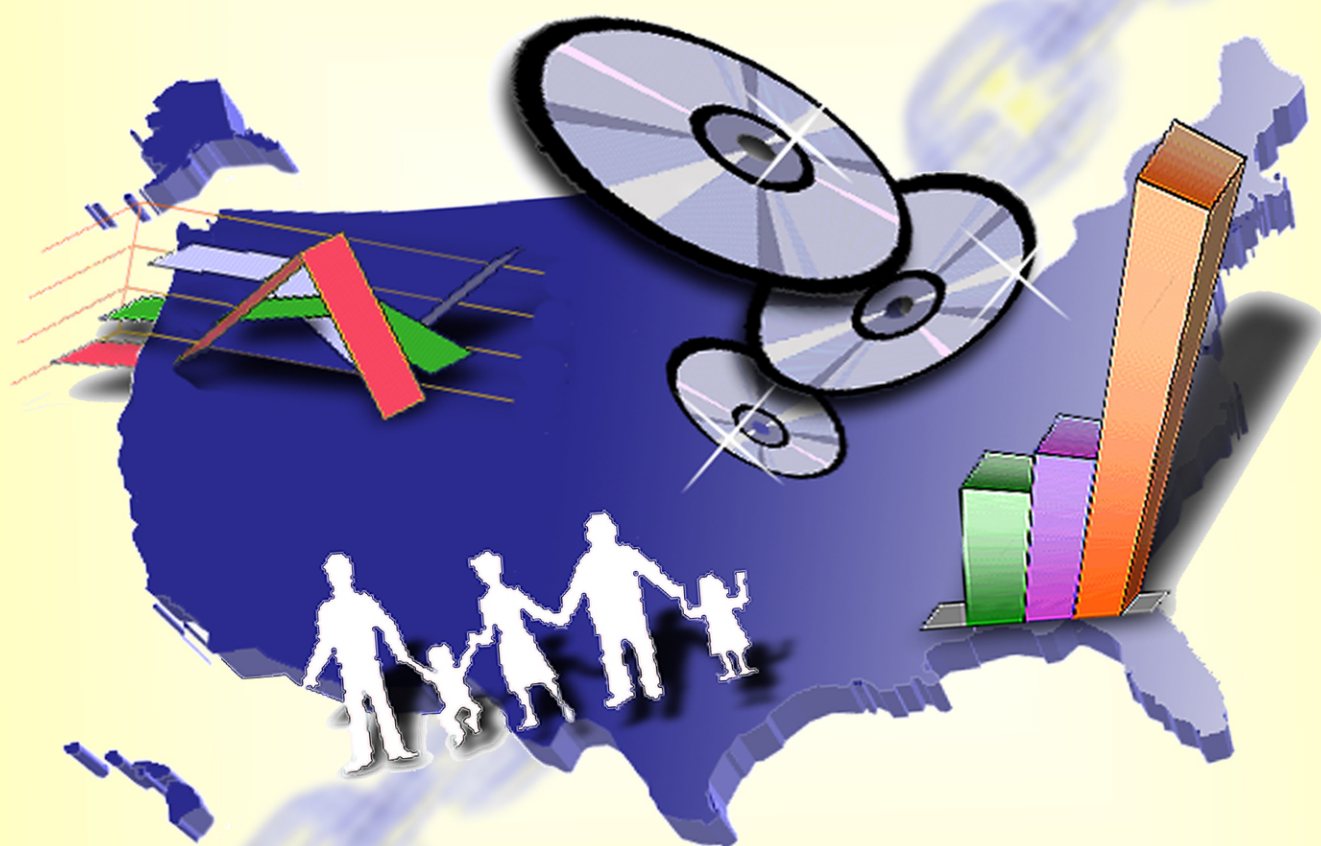
**The Emerging Minority Marketplace**

U.S. DEPARTMENT OF COMMERCE

Issued September 1999

# Federal Datalink:

## A Guide to Federal County-Level Data



# **Federal Datalink: A Guide to Federal County-Level Data**

September 1999

# **FEDERAL DATALINK**

## **A GUIDE TO FEDERAL COUNTY-LEVEL DATA**

The Minority Business Development Agency (MBDA), U.S. Department of Commerce, commissioned the Census Bureau to prepare this guide on Federal county-level data. It is one of a series of products that MBDA will be developing on The Emerging Minority Marketplace to organize and disseminate information for and about minority business.

### **Acknowledgements**

This guide was prepared in the U.S. Census Bureau Population Division by Nicole Stoops under the direction of Frank Hobbs, Chief, Special Projects Staff. The cover was designed by Alex Varson. Materials on Census data products were provided by the U.S. Census Bureau's Customer Services department and Linda Showalter, Chief, Statistical Information Staff. Information on and review of Census of Population and Housing products were provided by Marie Pees, Chief, Census Activities and Tabulation Staff.

For further information and additional copies, contact:

Richard L. Stevens  
Chief, Office of Market Access  
Room 5093  
Minority Business Development Agency  
U.S. Department of Commerce  
Washington, DC 20230  
202-482-4671  
[rstevens@mbda.gov](mailto:rstevens@mbda.gov)

For more detailed information, visit MBDA's Internet website at:

[www.mbda.gov](http://www.mbda.gov)

# Contents

---

<b>Introduction.....</b>	<b>5</b>
<b>Part I: Core Data Inventory .....</b>	<b>9</b>
<b>U.S. Census Bureau Data</b>	
<b>1990 Census of Population and Housing Data</b>	
Summary Tape File 1A (STF1A).....	12
Summary Tape File 1C (STF1C) .....	13
Summary Tape File 2B (STF2B).....	14
Summary Tape File 2C (STF2C) .....	15
Summary Tape File 3A (STF3A).....	16
Summary Tape File 3C (STF3C) .....	17
Summary Tape File 4C (STF4C) .....	18
Equal Employment Opportunity File (EEO).....	19
County to County Migration .....	20
The Asian and Pacific Islander Population in the United States (SSTF05) .....	21
Characteristics of American Indians by Tribe and Language (SSTF13).....	22
The Black Population of the United States (SSTF21).....	23
Persons of Hispanic Origin in the United States (SSTF03) .....	24
<b>1980 Census of Population and Housing Data</b>	
Summary Tape File 1A (STF1A).....	26
Summary Tape File 1C (STF1C) .....	27
Summary Tape File 2B (STF2B).....	28
Summary Tape File 2C (STF2C) .....	29
Summary Tape File 3A (STF3A).....	30
Summary Tape File 3C (STF3C) .....	31
Summary Tape File 4C (STF4C) .....	32
Equal Employment Opportunity File (EEO).....	33
County to County Migration .....	34
<b>Estimates and Projections Data</b>	
Population Estimates by Age, Sex, Race, and Hispanic Origin: 1990 to 1997 .....	36
Small Area Income and Poverty Estimates.....	37
Population Projections for States by Age, Sex, Race, and Hispanic Origin: 1995 to 2025.....	38
<b>Economic Census and Survey Data</b>	
Census of Retail Trade .....	40
Census of Wholesale Trade .....	41
Census of Service Industries .....	42
Census of Manufactures .....	43
Census of Mineral Industries.....	44
Survey of Minority-Owned Business Enterprises .....	45
Survey of Women-Owned Business Enterprises .....	46
Nonemployer Statistics .....	47
<b>Census of Agriculture Data</b>	
Census of Agriculture.....	49
<b>County-Level Data Compilations</b>	
County and City Data Book .....	51
USA Counties.....	52
County Business Patterns .....	53
CountyScope.....	54
<b>Government Data</b>	
Consolidated Federal Funds Report (CFFR) .....	56

Census of Governments, Finance Statistics .....	57
<b>Other Federal Agency Data</b>	
<b>Bureau of Economic Analysis, Regional Accounts Data</b>	
Wage and Salary Disbursements, Wage and Salary Employment, and Average Wage Per Job by County and Metropolitan Area, CA-34 .....	60
Personal Income and Per Capita Personal Income by County and Metropolitan Area, CA1-3: 1969-1996 .....	61
<b>Bureau of Labor Statistics, Employment and Unemployment Statistics</b>	
Employment and Average Annual Pay for Large Counties .....	63
Local Area Unemployment Statistics .....	64
<b>National Center for Health Statistics, Vital Statistics</b>	
Natality Data, Public-Use Data Files from the National Vital Statistics System .....	66
Compressed Mortality Public-Use Data File from the National Vital Statistics System .....	67
<b>Internal Revenue Service, Statistics of Income Division, Income Data</b>	
Individual Income Tax Returns, County Income Data .....	69
Individual Income Tax Returns, County to County Migration Data .....	70
<b>Bureau of Justice Statistics, Crime Data</b>	
Index of Offense Crimes and Arrests, the 90 Largest Counties .....	72
Selected Crime Data, 90 Most Populous Counties .....	73
<b>Bureau of Transportation Statistics, Transportation Data</b>	
Census of Population and Housing, 1990: Census Transportation Planning Package .....	75
<b>USDA, National Agricultural Statistics Service, Crop and Livestock Data</b>	
Crops County Data .....	77
Livestock County Data .....	78
<b>National Center for Education Statistics, Education Data</b>	
The School District Data Book .....	80
 <b>Part II: Datasets Available on the Internet</b> .....	 81
 <b>List of Acronyms</b> .....	 97
 <b>Other Useful Internet Sites</b> .....	 98
 <b>List of Contacts</b> .....	 99

# Introduction

---

## FEDERAL DATALINK

Federal Datalink is a guide to Federal county-level data and was prepared by the U.S. Census Bureau, Population Division with funding support from the Minority Business Development Agency (MBDA), Department of Commerce. The purpose of this guide is to collect and document available county-level statistical data from the U.S. Census Bureau and other Federal Agencies for years since 1980. Inclusion in this guide was determined, in part, by consideration of each dataset's relevance to the interests and needs of the MBDA. In particular, this guide includes demographic data and other data that have been cross-classified by race and Hispanic origin or include race detail. Historical data products pertaining to specific datasets included in this guide may be available prior to 1980, but are not covered by the scope of this guide. Also, the primary focus of the Federal Datalink is to provide information on data produced by Federal agencies that is available at the county-level and is available in electronic form (e.g., CD-ROM, tape, and/or downloadable files). Hence, county-level datasets only available in printed form are not included, with the exception of selected 1980's datasets for which later versions are available in electronic format. Users of this guide should be aware that all of the links and information contained in this document are current as of April 1999 and are subject to change.

## USES FOR FEDERAL DATALINK

Federal Datalink is intended as a tool for individuals and organizations who need local area and regional data. County-level data offer users a smaller, more focused level of analysis. County-level data, therefore, are particularly useful for individuals and groups such as small business owners and local governments. For example, county-level demographic data are particularly useful for determining markets, which is an essential factor in directing marketing campaigns. County-level data can also be used to learn more about the demographic characteristics of one's community.

## GEOGRAPHIC COVERAGE

While the focus of this guide is on county-level data, some state-level data are included. State-level data are included when there is race or Hispanic origin detail present in the dataset. Surveys or datasets with strictly National-level data are not included.

## ORGANIZATION

Federal Datalink is organized into two main sections. Part I consists of individual sheets for each dataset, which provide basic information about each dataset, such as the variables included, the geographic coverage, a brief summary, product ordering information, etc. This section is referred to as the "Core Data Inventory" and it contains both Census Bureau data as well as data from other Federal agencies. Part II provides the web addresses where selected data from Part I can be found in viewable and downloadable forms from the Internet. This section is termed, "Datasets Available on the Internet." Details of the information provided in each of these sections are provided below. In addition to parts I and II, several additional resources are provided at the back of the inventory. First, there is a list of acronyms, which

defines the acronyms used in Federal Datalink. There is also a list of other useful Internet sites such as Federal, university, and minority business sites, which might be of use to Federal Datalink users. Finally, there is a list of contacts, which provides users with the names and numbers of persons or groups who can answer questions about the data contained in the Federal Datalink.

## **PART I: CORE DATA INVENTORY**

The content of each sheet in Part I is as follows:

**Dataset:** refers to the set of data to be explained in the rest of the sheet.

**Web Address (Info.):** refers to the web address where a description about the dataset can be found. In the electronic version of this guide, the web addresses are hyperlinks, which give users the option of jumping directly to the web page that corresponds with the address.

**Source of Data:** refers to the Federal Agency which “releases” the data. If the dataset is a compilation of data from several sources, those sources are listed or it is mentioned that a variety of sources have contributed to the dataset.

**Variables:** refers to the specific data items available in the dataset. Generally, all variables are listed, although in some cases space considerations did not permit a complete listing.

**Time Period Coverage:** refers to the time period(s) or date(s) in time that correspond to the data in the dataset. For example, if a CD-ROM is released as the 1996 version but the data cover the time period 1990 to 1995, 1990 to 1995 will be listed as the time period coverage.

**Geographic Detail:** refers to the various levels of geography for which the data in the dataset are available.

**Years Available:** refers to the issue or years of data that are being described on the rest of the sheet and are available. For products which are released in issues (e.g., USA Counties 1996), the issue numbers of those issues that are available appear here. For products which do not have issue numbers (e.g., crops county data), the time periods or years of data that are available appear here.

**Data Format:** refers to what medium the data are available in (e.g., CD-ROM, tape, diskette, etc.). Data that are only available in a viewable or downloadable format from the Internet are also listed in Part II. In such instances, the Core Data Inventory sheet serves to provide the descriptive aspects of the dataset which are not included in Part II.

**Cost:** refers to how much a particular product costs when it is ordered. If available, the prices of individual discs and tapes are provided. A “TBA” in the cost section indicates that a product is not yet available for order.

**Ordering Information:** provides information on how and where to purchase the data products available for the various datasets. Information about documentation, packaging, tax, and shipping costs is not included. If available, telephone and FAX numbers and e-mail and web addresses are provided.

**Summary:** provides a brief description of the dataset. The summary may include things such as the purpose of the dataset, what types of information the dataset includes, and how the collection of data or production of statistics is carried out.

**Comments:** refers to any comments that may be useful for potential buyers and users of the dataset. If other portions of the inventory sheet require further explanation, the comments section will include those explanations. Product release dates are included here if it is known when the next version of a dataset will be available to the public.

**Data on the Internet?:** refers to whether the data are available on the Internet. Information about how to access data from the Internet is in Part II.

## **PART II: DATASETS AVAILABLE ON THE INTERNET**

Many of the datasets described in Part I of the Federal Datalink also are available in a viewable or downloadable format from the Internet. If a dataset is available on the Internet in viewable form only, the data cannot be retrieved and/or manipulated using spreadsheet or statistical software. Viewable data, therefore, can be viewed on a computer screen and/or printed out. If a dataset is available on the Internet in a downloadable form, the data can be saved onto a hard drive or disk and can then be manipulated using spreadsheet or statistical software. If a dataset from Part I of the Federal Datalink is available on the Internet, a table corresponding to that dataset will appear in Part II. The “Data on the Internet?” boxes on the sheets in Part I provide the page numbers where the corresponding tables in Part II can be found. The tables in Part II provide the information needed to access the data on the Internet. The content of each table in Part II is as follows:

**Site:** refers to the name of the site at which the data can be viewed and/or downloaded.

**Web Address (Data):** refers to the web address at which the data can be viewed and/or downloaded.

**Years Available:** refers to the issue or years of data that are available on the Internet.

**Data Format:** refers to the web-based format of the data (i.e., viewable or downloadable). If other information about the format of the data is available, more detail is provided.

**Comments:** provides more detail about the data on the Internet and may include additional information about the data, which would be helpful to users.

## **SOURCE OF INFORMATION**

The information describing the data sets contained in the Federal Datalink was obtained using a variety of methods. Much of the information was compiled by directly taking data descriptions as posted on web sites. In such cases, no independent verification was made of the posted descriptions. Other information was obtained from CD-ROM sources, direct contact with individuals responsible for the dataset, or from other subject matter analysts or customer service representatives. While verification of the dataset descriptions was attempted whenever feasible, users of Federal Datalink should recognize that the information provided may contain occasional errors and that some information may have changed since this guide was compiled.




## **NOTE ABOUT THE CENSUS OF POPULATION AND HOUSING**

Many of the datasets in the Federal Datalink are from the 1980 and 1990 Census of Population and Housing. The descriptions of these datasets mention whether a dataset contains long or short form data. In the interest of space, a thorough discussion of the long and short census forms is provided here.


The Census of Population and Housing consists of two primary questionnaires: the short-form and the long-form. The short-form questionnaire contains a limited number of population and housing questions, which are asked of all persons in each housing unit in the United States. The short-form questionnaire items, therefore, yield 100-percent data. The long-form questionnaire contains the questions from the short-form as well as a number of additional questions covering housing, social, and economic subjects. The long-form is sent only to a sample of households in the United States. In 1980, approximately 16.7 percent of U.S. households received the long-form questionnaire. In 1990, approximately 17 percent of U.S. households received the long-form questionnaire. In summary, the 100-percent data are a product of the responses from the short-forms added together with the responses to the short-form questionnaire items that appear on the long-forms. The sample data are a product of the additional questions that are included on the long-form questionnaire.



# **PART I CORE DATA INVENTORY**



# **U.S. CENSUS BUREAU DATA**



# **1990 CENSUS OF POPULATION AND HOUSING DATA**

<b>Dataset</b>	<b>1990 Census of Population and Housing - Summary Tape File 1A (STF1A)</b>
<b>Web Address (Info.)</b>	<a href="http://www.census.gov/ftp/pub/mp/www/rom/msrom6ab.html">http://www.census.gov/ftp/pub/mp/www/rom/msrom6ab.html</a>
<b>Source of Data</b>	U.S. Census Bureau
<b>Variables</b>	<b>Population items include:</b> age, race, sex, marital status, Hispanic origin, and household relationship. Population items are cross-tabulated by age, race, Hispanic origin, or sex. <b>Housing items include:</b> occupancy/vacancy status, tenure (owned or rented), number of units in structure, meals included in rent, value of home or monthly rent paid, and number of rooms in housing unit. Housing data are cross-tabulated by race or Hispanic origin of householder or by tenure.
<b>Time Period Coverage</b>	1990
<b>Geographic Detail</b>	States, counties, county subdivisions, places, Census tracts/BNA's, block groups, and state and county portions of American Indian and Alaska Native areas. Summaries are also available for places, Census tracts/BNA's, block groups, congressional districts, and consolidated cities.
<b>Years Available</b>	1990
<b>Data Format</b>	17 CD-ROM's; CD-ROM's can be ordered individually or as a set
<b>Cost</b>	\$100 per disc; \$900 for set of 17 discs
<b>Ordering Information</b>	All of the 1990 Decennial Census STF1A CD-ROM's can be ordered through the Census Bureau's Customer Services department at (301) 457-4100; FAX: (301) 457-3842 or 888-249-7295 (toll free).
<b>Summary</b>	The Census of Population and Housing is an enumeration of the United States conducted every ten years in order to collect basic social, economic, and housing characteristics about the U.S. population. Limited data items are collected from 100-percent (short-form) questions, while detailed population and housing characteristics are collected from sample (long-form) questions. See p.7 for more information about the difference between the short and long forms. The 1990 STF1A contains short-form (100-percent) data from the 1990 Census.
<b>Comments</b>	STF1A, in total, contains 17 CD-ROM's because it includes additional small area detail. An alternative to purchasing STF1A is to purchase the STF1C CD-ROM, which includes the same county data found on the STF1A CD-ROM's. The STF1C CD-ROM is more compact because it includes less geographic detail than the STF1A CD-ROM's.
<b>Data on the Internet?</b>	YES. These data can be viewed and/or downloaded from the web address(es) provided on pages 81-82.

<b>Dataset</b>	<b>1990 Census of Population and Housing - Summary Tape File 1C (STF1C)</b>
<b>Web Address (Info.)</b>	<a href="http://www.census.gov/ftp/pub/mp/www/rom/msrom6ad.html">http://www.census.gov/ftp/pub/mp/www/rom/msrom6ad.html</a>
<b>Source of Data</b>	U.S. Census Bureau
<b>Variables</b>	<b>Population items include:</b> age, race, sex, marital status, Hispanic origin, and household relationship. Population items are cross-tabulated by age, race, Hispanic origin, or sex. <b>Housing items include:</b> occupancy/vacancy status, tenure (owned or rented), number of units in structure, meals included in rent, value of home or monthly rent paid, and number of rooms in housing unit. Housing data are cross-tabulated by race or Hispanic origin of householder or by tenure.
<b>Time Period Coverage</b>	1990
<b>Geographic Detail</b>	U.S., regions, divisions, States, counties, places of 10,000 or more inhabitants, county subdivisions of 10,000 or more inhabitants in selected States, consolidated cities, MSA's/CMSA's, PMSA's, UA's, and state and county portions of American Indian and Alaska Native areas. Summaries are also available for Alaskan Native Regional Corporations.
<b>Years Available</b>	1990
<b>Data Format</b>	1 CD-ROM
<b>Cost</b>	\$100
<b>Ordering Information</b>	The 1990 Decennial Census STF1C CD-ROM can be ordered through the Census Bureau's Customer Services department at (301) 457-4100; FAX: (301) 457-3842 or 888-249-7295 (toll free).
<b>Summary</b>	The Census of Population and Housing is an enumeration of the United States conducted every ten years in order to collect basic social, economic, and housing characteristics about the U.S. population. Limited data items are collected from 100-percent (short-form) questions, while detailed population and housing characteristics are collected from sample (long-form) questions. See p.7 for more information about the difference between the short and long forms. The 1990 STF1C contains short-form (100-percent) data from the 1990 Census.
<b>Comments</b>	STF1C is an alternative to purchasing STF1A. It includes the same county data found on the STF1A CD-ROM's. STF1A, in total, contains 17 CD-ROM's because it includes additional small area detail. The STF1C CD-ROM is more compact because it includes less geographic detail than the STF1A CD-ROM's.
<b>Data on the Internet?</b>	YES. These data can be viewed and/or downloaded from the web address(es) provided on page 81.

<b>Dataset</b>	<b>1990 Census of Population and Housing - Summary Tape File 2B (STF2B)</b>
<b>Web Address (Info.)</b>	<a href="http://www.census.gov/ftp/pub/mp/www/tape/mstap09k.html">http://www.census.gov/ftp/pub/mp/www/tape/mstap09k.html</a>
<b>Source of Data</b>	U.S. Census Bureau
<b>Variables</b>	<p><b>Population items in the “A” record include:</b> counts of persons by race (37 categories, American Indian tribes (29 categories)), Hispanic origin (5 categories along with a separate table with two categories cross-tabulated by race), and group quarters (45 categories with a separate table with 13 categories cross-tabulated by age). <b>Housing items in the “A” record include:</b> race of householder (37 categories with a separate table of all 37 categories tabulated by Hispanic origin), tenure, household type, age of householder, vacancy status, and price/rent asked for vacant units. <b>Population items in the “B” record include:</b> persons, families, households, sex, and household size, type, and relationship. <b>Housing items in the “B” record include:</b> housing units, persons per room, units in structure, age of householder, value, and contract rent.</p>
<b>Time Period Coverage</b>	1990
<b>Geographic Detail</b>	States, counties, places of 1,000 or more inhabitants, county subdivisions, State parts of American Indian areas, and Alaska Native areas.
<b>Years Available</b>	1990
<b>Data Format</b>	54 tapes (1 for each state, 1 for the District of Columbia, 1 for Puerto Rico, 1 for the Virgin Islands, and 1 tape with all of the States); Tapes can be ordered individually
<b>Cost</b>	Prices for each tape range from \$175-\$1375; the tape with all of the states is \$14,000.
<b>Ordering Information</b>	All of the 1990 Decennial Census STF2B tapes can be ordered through the Census Bureau's Customer Services department at (301) 457-4100; FAX: (301) 457-3842 or 888-249-7295 (toll free).
<b>Summary</b>	The Census of Population and Housing is an enumeration of the United States conducted every ten years in order to collect basic social, economic, and housing characteristics about the U.S. population. Limited data items are collected from 100-percent (short-form) questions, while detailed population and housing characteristics are collected from sample (long-form) questions. See p.7 for more information about the difference between the short and long forms. The 1990 STF2B contains short-form (100-percent) data from the 1990 Census. STF2B repeats tables for each summary level/geographic component combination for 34 categories of race and Hispanic origin.
<b>Comments</b>	
<b>Data on the Internet?</b>	NO

<b>Dataset</b>	<b>1990 Census of Population and Housing - Summary Tape File 2C (STF2C)</b>
<b>Web Address (Info.)</b>	<a href="http://www.census.gov/ftp/pub/mp/www/tape/mstap09l.html">http://www.census.gov/ftp/pub/mp/www/tape/mstap09l.html</a>
<b>Source of Data</b>	U.S. Census Bureau
<b>Variables</b>	<p><b>Population items in the “A” record include:</b> counts of persons by race (37 categories, American Indian tribes (29 categories)), Hispanic origin (5 categories along with a separate table with two categories cross-tabulated by race), and group quarters (45 categories with a separate table with 13 categories cross-tabulated by age). <b>Housing items in the “A” record include:</b> race of householder (37 categories with a separate table of all 37 categories tabulated by Hispanic origin), tenure, household type, age of householder, vacancy status, and price/rent asked for vacant units. <b>Population items in the “B” record include:</b> persons, families, households, sex, and household size, type, and relationship. <b>Housing items in the “B” record include:</b> housing units, persons per room, units in structure, age of householder, value, and contract rent.</p>
<b>Time Period Coverage</b>	1990
<b>Geographic Detail</b>	U.S., regions, divisions, States, counties, places of 10,000 or more inhabitants, county subdivisions of 10,000 or more inhabitants in selected States, county subdivisions with fewer than 10,000 persons in an MSA/CMSA (New England States only), consolidated cities, American Indian and Alaska native areas, MSA's/CMSA's, PMSA's, and UA's.
<b>Years Available</b>	1990
<b>Data Format</b>	41 tapes; Tapes can be ordered individually
<b>Cost</b>	\$8,075 for the entire file
<b>Ordering Information</b>	All of the 1990 Decennial Census STF2C tapes can be ordered through the Census Bureau's Customer Services department at (301) 457-4100; FAX: (301) 457-3842 or 888-249-7295 (toll free).
<b>Summary</b>	The Census of Population and Housing is an enumeration of the United States conducted every ten years in order to collect basic social, economic, and housing characteristics about the U.S. population. Limited data items are collected from 100-percent (short-form) questions, while detailed population and housing characteristics are collected from sample (long-form) questions. See p.7 for more information about the difference between the short and long forms. The 1990 STF2C contains short-form (100-percent) data from the 1990 Census. STF2C includes a set of tabulations for the total population and separate tabulations by race and Hispanic origin.
<b>Comments</b>	
<b>Data on the Internet?</b>	NO



<b>Dataset</b>	<b>1990 Census of Population and Housing - Summary Tape File 3A (STF3A)</b>
<b>Web Address (Info.)</b>	<a href="http://www.census.gov/ftp/pub/mp/www/rom/msrom6ae.html">http://www.census.gov/ftp/pub/mp/www/rom/msrom6ae.html</a>
<b>Source of Data</b>	U.S. Census Bureau
<b>Variables</b>	<b>Population items include:</b> age, race, sex, Hispanic origin, marital status, family type, household type and relationship, group quarters, farm/nonfarm and urban/rural population, place of birth, ancestry, citizenship, language spoken at home, school enrollment, educational attainment, occupation, industry, employment status, income in 1989, poverty status in 1989, means of transportation, travel time to work, etc. <b>Housing items include:</b> total housing units, rooms and bedrooms in unit, kitchen and plumbing facilities, water source, sewage disposal, heating fuel, year structure was built, tenure, value of housing unit, selected monthly owner costs, rent, meals included in rent, occupancy status, telephone and vehicle availability, etc.
<b>Time Period Coverage</b>	1990, 1989 (for selected variables e.g., income)
<b>Geographic Detail</b>	States, counties, county subdivisions, places, Census tracts/BNAs, block groups, State and county portions of American Indian and Alaska Native areas, Alaska Native Regional Corporations, State portion of MSA's/CMSA's, and PMSA's, and State portion of UA's.
<b>Years Available</b>	1990
<b>Data Format</b>	62 CD-ROM's; CD-ROM's can be ordered individually or as a set
<b>Cost</b>	\$100 per disc; \$4,340 for set of 62 discs
<b>Ordering Information</b>	All of the 1990 Decennial Census STF3A CD-ROM's can be ordered through the Census Bureau's Customer Services department at (301) 457-4100; FAX: (301) 457-3842 or 888-249-7295 (toll free).
<b>Summary</b>	The Census of Population and Housing is an enumeration of the United States conducted every ten years in order to collect basic social, economic, and housing characteristics about the U.S. population. Limited data items are collected from 100-percent (short-form) questions, while detailed population and housing characteristics are collected from sample (long-form) questions. See p.7 for more information about the difference between the short and long forms. The 1990 STF3A contains 100-percent and long-form (sample) data from the 1990 Census.
<b>Comments</b>	STF3A, in total, contains 62 CD-ROM's because it includes additional small area detail. An alternative to purchasing STF3A is to purchase the STF3C CD-ROM's, which include the same county data found on the STF3A CD-ROM's. STF3C is more compact because it includes less geographic detail than the STF3A CD-ROM's.
<b>Data on the Internet?</b>	YES. These data can be viewed and/or downloaded from the web address(es) provided on pages 81-82.

<b>Dataset</b>	<b>1990 Census of Population and Housing - Summary Tape File 3C (STF3C)</b>
<b>Web Address (Info.)</b>	<a href="http://www.census.gov/ftp/pub/mp/www/rom/msrom6zf.html">http://www.census.gov/ftp/pub/mp/www/rom/msrom6zf.html</a>
<b>Source of Data</b>	U.S. Census Bureau
<b>Variables</b>	<b>Population items include:</b> age, race, sex, Hispanic origin, marital status, family type, household type and relationship, group quarters, farm/nonfarm and urban/rural population, place of birth, ancestry, citizenship, language spoken at home, school enrollment, educational attainment, occupation, industry, employment status, income in 1989, poverty status in 1989, means of transportation and travel time to work, etc. <b>Housing items include:</b> total housing units, rooms and bedrooms in unit, kitchen and plumbing facilities, water source, sewage disposal, heating fuel, year structure was built, tenure, value of housing unit, selected monthly owner costs, rent, meals included in rent, occupancy status, telephone and vehicle availability, etc.
<b>Time Period Coverage</b>	1990, 1989 (for selected variables e.g., income)
<b>Geographic Detail</b>	U.S., regions, divisions, States, counties, county subdivisions (in 12 states), places of 10,000 or more persons, consolidated cities, American Indian and Alaska Native areas, Alaska Native Regional Corporations, MSA's/CMSA's, PMSA's, and UA's.
<b>Years Available</b>	1990
<b>Data Format</b>	2 CD-ROM's
<b>Cost</b>	\$100
<b>Ordering Information</b>	The 1990 Decennial Census STF3C CD-ROM's can be ordered through the Census Bureau's Customer Services department at (301) 457-4100; FAX: (301) 457-3842 or 888-249-7295 (toll free).
<b>Summary</b>	The Census of Population and Housing is an enumeration of the United States conducted every ten years in order to collect basic social, economic, and housing characteristics about the U.S. population. Limited data items are collected from 100-percent (short-form) questions, while detailed population and housing characteristics are collected from sample (long-form) questions. See p.7 for more information about the difference between the short and long forms. The 1990 STF3C contains 100-percent and long-form (sample) data from the 1990 Census.
<b>Comments</b>	STF3C is an alternative to purchasing STF3A. It includes the same county data found on the STF3A CD-ROM's. STF3A, in total, contains 62 CD-ROM's because it includes additional small area detail. STF3C is more compact because it includes less geographic detail than the STF3A CD-ROM's.
<b>Data on the Internet?</b>	YES. These data can be viewed and/or downloaded from the web address(es) provided on pages 81-82.

<b>Dataset</b>	<b>1990 Census of Population and Housing - Summary Tape File 4C (STF4C)</b>
<b>Web Address (Info.)</b>	<a href="http://www.census.gov/ftp/pub/mp/www/tape/mstap09x.html">http://www.census.gov/ftp/pub/mp/www/tape/mstap09x.html</a>
<b>Source of Data</b>	U.S. Census Bureau
<b>Variables</b>	<b>Population items include:</b> age, ancestry, children ever born, citizenship, class of worker, educational attainment, employment status, family type, group quarters, Hispanic origin, hours worked, household type and relationship, income in 1989, industry, language spoken at home, marital status, workers in family in 1989, nativity, occupation, persons in families and households, place of birth, place of work, poverty status in 1989, race, school enrollment, sex, travel time to work, urban and rural population, veteran/military status, work disability status, work status in 1989, etc. <b>Housing items include:</b> bedrooms, heating fuel, Hispanic origin of householder, housing units, kitchen facilities, meals included in rent, selected monthly owner costs, sewage disposal, source of water, telephone availability, tenure, units in structure, urban and rural housing, utilities in rent, and value of housing unit, etc.
<b>Time Period Coverage</b>	1990, 1989 (for selected variables e.g., income)
<b>Geographic Detail</b>	U.S., regions, divisions, States, counties, places of 1,000 or more inhabitants, county subdivisions of 10,000 or more inhabitants in selected States, American Indian and Alaska Native areas, MA's, and UA's.
<b>Years Available</b>	1990
<b>Data Format</b>	45 tapes (1 tape for all persons—A records, 1 tape for all persons—B records, and 1 tape for each of 43 different race and Hispanic origin categories; Tapes can be ordered individually.
<b>Cost</b>	Prices for each tape range from \$200-\$1650; the cost for all of the tapes is \$43,325
<b>Ordering Information</b>	All of the 1990 Decennial Census STF4C tapes can be ordered through the Census Bureau's Customer Services department at (301) 457-4100; FAX: (301) 457-3842 or 888-249-7295 (toll free).
<b>Summary</b>	The Census of Population and Housing is an enumeration of the United States conducted every ten years in order to collect basic social, economic, and housing characteristics about the U.S. population. Limited data items are collected from 100-percent (short-form) questions, while detailed population and housing characteristics are collected from sample (long-form) questions. See p.7 for more information about the difference between the short and long forms. The 1990 STF4C contains 100-percent and long-form (sample) data from the 1990 Census. STF4C contains "A" and "B" records which include data for 37 race and 26 Hispanic origin categories.
<b>Comments</b>	
<b>Data on the Internet?</b>	NO

<b>Dataset</b>	<b>1990 Census of Population and Housing - Equal Employment Opportunity File (EEO)</b>	
<b>Web Address (Info.)</b>	<a href="http://www.census.gov/ftp/pub/mp/www/rom/msrom6d.html">http://www.census.gov/ftp/pub/mp/www/rom/msrom6d.html</a>	
<b>Source of Data</b>	U.S. Census Bureau	
<b>Variables</b>	Two sample-based sets of tabulations from civilian labor force data collected in the 1990 Census. The first set is a cross-tabulation of 512 detailed census occupations by sex, race, and Hispanic Origin. The second set shows educational attainment for selected age groupings by sex, race, and Hispanic origin.	
<b>Time Period Coverage</b>	1990	
<b>Geographic Detail</b>	U.S., States, counties, MA's, and places of 50,000 or more persons within each State. For 12 States: MCD's of 50,000 or more persons.	
<b>Years Available</b>	1990	
<b>Data Format</b>	2 CD-ROM's	7 tapes (organized by region)*
<b>Cost</b>	\$100 for both discs	\$175 per tape; \$800 for all 7 tapes
<b>Ordering Information</b>	The 1990 Decennial Census EEO CD-ROM's and tapes can be ordered through the Census Bureau's Customer Services department at (301) 457-4100; FAX: (301) 457-3842 or 888-249-7295 (toll free).	
<b>Summary</b>	This file consists of sample tabulations of the civilian labor force, from the 1990 Census of Population and Housing, showing detailed occupations and educational attainment data by age; cross-tabulated by sex, Hispanic origin, and race.	
<b>Comments</b>	*A tape can be purchased for \$175 from the Census Bureau's Customer Services department containing the U.S. summary and the metropolitan areas.	
<b>Data on the Internet?</b>	YES. These data can be viewed and/or downloaded from the web address(es) provided on page 82.	

<b>Dataset</b>	<b>1990 Census of Population and Housing - County to County Migration</b>
<b>Web Address (Info.)</b>	<a href="http://www.census.gov/ftp/pub/mp/www/rom/msrom6e.html">http://www.census.gov/ftp/pub/mp/www/rom/msrom6e.html</a>
<b>Source of Data</b>	U.S. Census Bureau
<b>Variables</b>	The data for each migration flow consist of a geographic record (area of origin and area of destination) and 21 tables showing the following characteristics: age, college enrollment, employment status, Hispanic origin, household type, income in 1989, industry, occupation, place of birth and citizenship, poverty status in 1989, race, sex, and tenure.
<b>Time Period Coverage</b>	1985 to 1990
<b>Geographic Detail</b>	States, counties in 44 states (not including Connecticut, Maine, Massachusetts, New Hampshire, Rhode Island, and Vermont); and MCD's in six states only (Connecticut, Maine, Massachusetts, New Hampshire, Rhode Island, and Vermont).
<b>Years Available</b>	1990
<b>Data Format</b>	2 CD-ROM's
<b>Cost</b>	\$250 for both discs
<b>Ordering Information</b>	The 1990 Decennial Census County to County Migration CD-ROM's can be ordered through the Census Bureau's Customer Services department at (301) 457-4100; FAX: (301) 457-3842 or 888-249-7295 (toll free).
<b>Summary</b>	This file includes summary statistics for all intrastate county-to-county migration streams and significant interstate county-to-county migration streams between 1985 and 1990. Each record includes codes for the geographic area of destination and selected characteristics of the persons who made up the migration stream.
<b>Comments</b>	
<b>Data on the Internet?</b>	NO


<b>Dataset</b>	<b>1990 Census of Population and Housing - The Asian and Pacific Islander Population in the United States (SSTF05)</b>
<b>Web Address (Info.)</b>	<a href="http://www.census.gov/ftp/pub/mp/www/rom/msrom60.html">http://www.census.gov/ftp/pub/mp/www/rom/msrom60.html</a>
<b>Source of Data</b>	U.S. Census Bureau
<b>Variables</b>	<b>Population items include:</b> ability to speak English, age, citizenship, class of worker, earnings in 1989, educational attainment, employment status, family types, household type and relationship, income in 1989, industry, language spoken at home, linguistic isolation, marital status, nativity, occupation, poverty status in 1989, school enrollment, sex, etc. <b>Housing items include:</b> gross rent, housing units, kitchen facilities, mortgage status, tenure, units in structure, etc.
<b>Time Period Coverage</b>	1990, 1989 (for selected variables e.g., income)
<b>Geographic Detail</b>	U.S., regions, divisions, and States.
<b>Years Available</b>	1990
<b>Data Format</b>	1 CD-ROM
<b>Cost</b>	\$150
<b>Ordering Information</b>	The 1990 Decennial Census SSTF05 CD-ROM can be ordered through the Census Bureau's Customer Services department at (301) 457-4100; FAX: (301) 457-3842 or 888-249-7295 (toll free).
<b>Summary</b>	SSTF05 contains sample data weighted to represent the total Asian and Pacific Islander population. In addition, the file contains 100-percent counts and unweighted sample counts for total persons and total housing units. This file covers all persons regardless of race, persons who are not Asian or Pacific Islander, and 24 Asian and Pacific Islander groups.
<b>Comments</b>	
<b>Data on the Internet?</b>	YES. These data can be viewed and/or downloaded from the web address(es) provided on page 81.

<b>Dataset</b>	<b>1990 Census of Population and Housing - Characteristics of American Indians by Tribe and Language (SSTF13)</b>
<b>Web Address (Info.)</b>	<a href="http://www.census.gov/ftp/pub/mp/www/rom/msrom6u.html">http://www.census.gov/ftp/pub/mp/www/rom/msrom6u.html</a>
<b>Source of Data</b>	U.S. Census Bureau
<b>Variables</b>	<b>Population items include:</b> age, college enrollment, earnings in 1989, educational attainment, family type, group quarters, household type, income in 1989, Indian tribe, industry, language spoken at home and ability to speak English, linguistic isolation, marital status, occupation, work disability and employment status, sex, etc. <b>Household items include:</b> bedrooms, heating fuel, household type and relationship, housing units, kitchen facilities, selected monthly owner costs, tenure, units in structure, etc.
<b>Time Period Coverage</b>	1990, 1989 (for selected variables e.g., income)
<b>Geographic Detail</b>	U.S., regions, divisions, States, MSA's/CMSA's, and PMSA's.
<b>Years Available</b>	1990
<b>Data Format</b>	1 CD-ROM
<b>Cost</b>	\$150
<b>Ordering Information</b>	The 1990 Decennial Census SSTF13 CD-ROM can be ordered through the Census Bureau's Customer Services department at (301) 457-4100; FAX: (301) 457-3842 or 888-249-7295 (toll free).
<b>Summary</b>	SSTF13 records contain sample data for both 100-percent and sample subjects in the 1990 Census of Population and Housing on the characteristics of the American Indian Population in the United States. In addition, the file contains 100-percent counts and unweighted sample counts for total persons and total housing units. All subjects except for American Indian language spoken at home are cross-classified by American Indian persons and American Indian tribes.
<b>Comments</b>	
<b>Data on the Internet?</b>	NO

<b>Dataset</b>	<b>1990 Census of Population and Housing - The Black Population of the United States (SSTF21)</b>
<b>Web Address (Info.)</b>	<a href="http://www.census.gov/ftp/pub/mp/www/rom/msrom6za.html">http://www.census.gov/ftp/pub/mp/www/rom/msrom6za.html</a>
<b>Source of Data</b>	U.S. Census Bureau
<b>Variables</b>	<b>Population items include:</b> age, educational attainment, employment status, family income in 1989, family size and type, household income in 1989, income in 1989, industry, marital status, occupation, persons, poverty status in 1989, school enrollment, sex, work status in 1989, etc. <b>Housing items include:</b> age of householder, bedrooms, contacts rent, housing units, meals included in rent, mortgage status, persons in unit, selected monthly owner costs, tenure, units in structure, utilities, value, etc.
<b>Time Period Coverage</b>	1990, 1989 (for selected variables e.g., income)
<b>Geographic Detail</b>	U.S., regions, States, and MA's with 500,000 or more persons.
<b>Years Available</b>	1990
<b>Data Format</b>	3 CD-ROM's; CD-ROM's can be ordered individually or as a set
<b>Cost</b>	\$100 per disc; \$200 for set of 3 discs
<b>Ordering Information</b>	All of the 1990 Decennial Census SSTF21 CD-ROM's can be ordered through the Census Bureau's Customer Services department at (301) 457-4100; FAX: (301) 457-3842 or 888-249-7295 (toll free).
<b>Summary</b>	SSTF21 records contain sample data for both 100-percent and sample subjects in the 1990 Census of Population and Housing on the Black population in the United States. The file contains data on Black persons and on persons living in housing units with a Black householder. Many of the subjects are cross-classified by sex and detailed age groups. In addition, the file contains 100-percent counts and unweighted sample counts for total persons and total housing units.
<b>Comments</b>	
<b>Data on the Internet?</b>	NO



<b>Dataset</b>	<b>1990 Census of Population and Housing - Persons of Hispanic Origin in the United States (SSTF03)</b>
<b>Web Address (Info.)</b>	<a href="http://www.census.gov/ftp/pub/mp/www/rom/msrom6m.html">http://www.census.gov/ftp/pub/mp/www/rom/msrom6m.html</a>
<b>Source of Data</b>	U.S. Census Bureau
<b>Variables</b>	<b>Population items include:</b> ability to speak English, age, citizenship, class of worker, disability status, earnings in 1989, educational attainment, employment status, family type, household type and relationship, income in 1989, industry, language spoken at home, linguistic isolation, marital status, nativity, occupation, poverty status in 1989, sex, etc. <b>Housing items include:</b> gross rent, housing units, mortgage status, persons per room, tenure, units in structure, etc.
<b>Time Period Coverage</b>	1990, 1989 (for selected variables e.g., income)
<b>Geographic Detail</b>	U.S., regions, divisions, and States.
<b>Years Available</b>	1990
<b>Data Format</b>	1 CD-ROM
<b>Cost</b>	\$150
<b>Ordering Information</b>	The 1990 Decennial Census SSTF03 CD-ROM can be ordered through the Census Bureau's Customer Services department at (301) 457-4100; FAX: (301) 457-3842 or 888-249-7295 (toll free).
<b>Summary</b>	SSTF03 contains sample data weighted to represent the total Hispanic population. In addition, the file contains 100-percent counts and unweighted sample counts for total persons and total housing units. The subjects are cross-classified by 25 Hispanic origin categories of persons in the United States.
<b>Comments</b>	
<b>Data on the Internet?</b>	YES. These data can be viewed and/or downloaded from the web address(es) provided on page 81.



# **1980 CENSUS OF POPULATION AND HOUSING DATA**

<b>Dataset</b>	<b>1980 Census of Population and Housing - Summary Tape File 1A (STF1A)</b>
<b>Web Address (Info.)</b>	<a href="http://www.census.gov/ftp/pub/mp/www/rom/msrom6zg.html">http://www.census.gov/ftp/pub/mp/www/rom/msrom6zg.html</a>
<b>Source of Data</b>	U.S. Census Bureau
<b>Variables</b>	<b>Population items include:</b> age, race, sex, marital status, Hispanic origin, household type, and household relationship. Population items are cross-tabulated by age, race, Hispanic origin, or sex. <b>Housing items include:</b> occupancy/vacancy status, tenure, contract rent, value, condominium status, number of rooms, and plumbing facilities. Housing data are cross-tabulated by race or Hispanic origin of householder or by tenure.
<b>Time Period Coverage</b>	1980
<b>Geographic Detail</b>	States, counties, MCD's or CCD's, places or place segments within MCD's/CCD's and remainder of MCD's and CCD's, congressional districts (96 <sup>th</sup> & 97 <sup>th</sup> Congresses), Census tracts or block numbering areas, and block groups or enumeration districts.
<b>Years Available</b>	1980
<b>Data Format</b>	4 CD-ROM's; CD-ROM's can be ordered individually or as a set
<b>Cost</b>	\$150 per disc; \$400 for set of 4 discs
<b>Ordering Information</b>	All of the 1980 Decennial Census STF1A CD-ROM's can be ordered through the Census Bureau's Customer Services department at (301) 457-4100; FAX: (301) 457-3842 or 888-249-7295 (toll free).
<b>Summary</b>	The Census of Population and Housing is an enumeration of the United States conducted every ten years in order to collect basic social, economic, and housing characteristics about the U.S. population. Limited data items are collected from 100-percent (short-form) questions, while detailed population and housing characteristics are collected from sample (long-form) questions. See p.7 for more information about the difference between the short and long forms. The 1980 STF1A contains short-form (100-percent) data from the 1980 Census.
<b>Comments</b>	STF1A, in total, contains 4 CD-ROM's because it includes additional small area detail. An alternative to purchasing STF1A is to purchase the STF1C tape, which includes the same county data, which is found on the STF1A CD-ROM's. The STF1C tape is more compact because it includes less geographic detail than the STF1A CD-ROM's.
<b>Data on the Internet?</b>	NO

<b>Dataset</b>	<b>1980 Census of Population and Housing - Summary Tape File 1C (STF1C)</b>
<b>Web Address (Info.)</b>	<a href="http://www.census.gov/ftp/pub/mp/www/tape/mstap07z.html">http://www.census.gov/ftp/pub/mp/www/tape/mstap07z.html</a>
<b>Source of Data</b>	U.S. Census Bureau
<b>Variables</b>	<b>Population items include:</b> age, race, sex, marital status, Hispanic origin, household type, and household relationship. Population items are cross-tabulated by age, race, Hispanic origin, or sex. <b>Housing items include:</b> occupancy/vacancy status, tenure, contract rent, value, condominium status, number of rooms, and plumbing facilities. Housing data are cross-tabulated by race or Hispanic origin of householder or by tenure.
<b>Time Period Coverage</b>	1980
<b>Geographic Detail</b>	U.S., regions, divisions, States, SCSA's, SMSA's, UA's, counties, places of 10,000 or more, towns/townships of 10,000 or more, and congressional districts (96 <sup>th</sup> & 97 <sup>th</sup> Congresses).
<b>Years Available</b>	1980
<b>Data Format</b>	1 tape
<b>Cost</b>	\$175
<b>Ordering Information</b>	The 1980 Decennial Census STF1C tape can be ordered through the Census Bureau's Customer Services department at (301) 457-4100; FAX: (301) 457-3842 or 888-249-7295 (toll free).
<b>Summary</b>	The Census of Population and Housing is an enumeration of the United States conducted every ten years in order to collect basic social, economic, and housing characteristics about the U.S. population. Limited data items are collected from 100-percent (short-form) questions, while detailed population and housing characteristics are collected from sample (long-form) questions. See p.7 for more information about the difference between the short and long forms. The 1980 STF1C contains short-form (100-percent) data from the 1980 Census.
<b>Comments</b>	STF1C is an alternative to purchasing STF1A. STF1C includes the same county data found on the STF1A CD-ROM's. STF1A, in total, contains 4 CD-ROM's because it includes additional small area detail. The STF1C tape is more compact because it includes less geographic detail than the STF1A CD-ROM's.
<b>Data on the Internet?</b>	NO

<b>Dataset</b>	<b>1980 Census of Population and Housing - Summary Tape File 2B (STF2B)</b>
<b>Web Address (Info.)</b>	<a href="http://www.census.gov/ftp/pub/mp/www/tape/mstap071.html">http://www.census.gov/ftp/pub/mp/www/tape/mstap071.html</a>
<b>Source of Data</b>	U.S. Census Bureau
<b>Variables</b>	<b>Population items include:</b> age, sex, marital status, household type and household relationship. <b>Housing items include:</b> occupancy/vacancy status, tenure, contract rent, value, condominium status, number of rooms, and plumbing facilities.
<b>Time Period Coverage</b>	1980
<b>Geographic Detail</b>	States, SCSA's, SMSA's, UA's, counties, MCD's or Census county divisions, places of 1,000 or more, American Indian reservations and their county components, and Alaska Native villages and their county components.
<b>Years Available</b>	1980
<b>Data Format</b>	51 tapes; Tapes can be ordered individually or as a set
<b>Cost</b>	\$175 per tape; \$8,925 for set of 51 tapes
<b>Ordering Information</b>	All of the 1980 Decennial Census STF2B tapes can be ordered through the Census Bureau's Customer Services department at (301) 457-4100; FAX: (301) 457-3842 or 888-249-7295 (toll free).
<b>Summary</b>	The Census of Population and Housing is an enumeration of the United States conducted every ten years in order to collect basic social, economic, and housing characteristics about the U.S. population. Limited data items are collected from 100-percent (short-form) questions, while detailed population and housing characteristics are collected from sample (long-form) questions. See p.7 for more information about the difference between the short and long forms. The 1980 STF2B contains short-form (100-percent) data from the 1980 Census. STF2B provides 132 tables with 2,292 cells of detailed complete-count population and housing characteristics data, of which 962 are repeated for race/or Spanish origin groups present in the tabulation area. STF2B presents data on characteristics for 27 race and Spanish-origin categories.
<b>Comments</b>	
<b>Data on the Internet?</b>	NO

<b>Dataset</b>	<b>1980 Census of Population and Housing - Summary Tape File 2C (STF2C)</b>
<b>Web Address (Info.)</b>	<a href="http://www.census.gov/ftp/pub/mp/www/tape/mstap071.html">http://www.census.gov/ftp/pub/mp/www/tape/mstap071.html</a>
<b>Source of Data</b>	U.S. Census Bureau
<b>Variables</b>	<b>Population items include:</b> age, sex, marital status, household type and household relationship. <b>Housing items include:</b> occupancy/vacancy status, tenure, contract rent, value, condominium status, number of rooms, and plumbing facilities.
<b>Time Period Coverage</b>	1980
<b>Geographic Detail</b>	U.S., regions, Census divisions, States, SCSA's, SMSA's, UA's, counties, places of 10,000 or more, MCD's of 10,000 or more, American Indian reservations, and Alaska Native villages and their county components.
<b>Years Available</b>	1980
<b>Data Format</b>	Subfile 1-U.S., regions, divisions, and States (3 tapes) Subfile 2-SCSA's, SMSA's, and UA's (6 tapes) Subfile 3-counties (7 tapes) Subfile 4-places, towns of 10,000+, and Indian reservations (6 tapes)
<b>Cost</b>	Subfile 1 (\$525 for 3 tapes) Subfile 2 (\$1,050 for 6 tapes) Subfile 3 (\$1,225 for 7 tapes) Subfile 4 (\$1,050 for 6 tapes)
<b>Ordering Information</b>	All of the 1980 Decennial Census STF2C tapes can be ordered through the Census Bureau's Customer Services department at (301) 457-4100; FAX: (301) 457-3842 or 888-249-7295 (toll free).
<b>Summary</b>	The Census of Population and Housing is an enumeration of the United States conducted every ten years in order to collect basic social, economic, and housing characteristics about the U.S. population. Limited data items are collected from 100-percent (short-form) questions, while detailed population and housing characteristics are collected from sample (long-form) questions. See p.7 for more information about the difference between the short and long forms. The 1980 STF2C contains short-form (100-percent) data from the 1980 Census. STF2C provides 132 tables with 2,292 cells of detailed complete-count population and housing characteristics data, of which 962 are repeated for race/or Spanish origin groups present in the tabulation area. STF2C presents data on characteristics for 27 race and Spanish-origin categories.
<b>Comments</b>	
<b>Data on the Internet?</b>	NO

<b>Dataset</b>	<b>1980 Census of Population and Housing - Summary Tape File 3A (STF3A)</b>
<b>Web Address (Info.)</b>	<a href="http://www.census.gov/ftp/pub/mp/www/rom/msrom6zi.html">http://www.census.gov/ftp/pub/mp/www/rom/msrom6zi.html</a>
<b>Source of Data</b>	U.S. Census Bureau
<b>Variables</b>	<b>Population items include:</b> age, race, sex, marital status, Hispanic origin, household relationship, school enrollment, years of school completed, nativity and place of birth, language other than English spoken at home, ability to speak English, ancestry, labor force status in 1979, veteran status, children ever born, place of work, travel time to work, means of transportation to work, private vehicle occupancy, industry, occupation, class of worker, usual hours worked per week in 1979, income in 1979, etc. <b>Housing items include:</b> units in structure, plumbing facilities, number of rooms, tenure, vacancy status, value, rent, year structure built, source of water, sewage disposal, kitchen facilities, heating fuel, number of bedrooms and bathrooms, telephone, air conditioning, number of vehicles available, selected monthly owner costs, etc.
<b>Time Period Coverage</b>	1980, 1979 (for selected variables e.g., income)
<b>Geographic Detail</b>	States, counties, MCD's or CCD's, places or place segments within MCD's/CCD's and remainder of MCD's and CCD's, congressional districts (96 <sup>th</sup> & 97 <sup>th</sup> Congresses), Census tracts or block numbering areas, and block groups or enumeration districts.
<b>Years Available</b>	1980
<b>Data Format</b>	12 CD-ROM's; CD-ROM's can be ordered individually or as a set
<b>Cost</b>	\$150 per disc; \$1,500 for set of 12 discs
<b>Ordering Information</b>	All of the 1980 Decennial Census STF3A CD-ROM's can be ordered through the Census Bureau's Customer Services department at (301) 457-4100; FAX: (301) 457-3842 or 888-249-7295 (toll free).
<b>Summary</b>	The Census of Population and Housing is an enumeration of the United States conducted every ten years in order to collect basic social, economic, and housing characteristics about the U.S. population. Limited data items are collected from 100-percent (short-form) questions, while detailed population and housing characteristics are collected from sample (long-form) questions. See p.7 for more information about the difference between the short and long forms. The 1980 STF3A contains long-form (sample) data from the 1980 Census.
<b>Comments</b>	STF3A, in total, contains 12 CD-ROM's because it includes additional small area detail. An alternative to purchasing STF3A is to purchase the STF3C tape, which includes the same county data found on the STF3A CD-ROM's. STF3C is more compact because it includes less geographic detail than the STF3A CD-ROM's.
<b>Data on the Internet?</b>	NO

<b>Dataset</b>	<b>1980 Census of Population and Housing - Summary Tape File 3C (STF3C)</b>
<b>Web Address (Info.)</b>	<a href="http://www.census.gov/ftp/pub/mp/www/tape/mstap072.html">http://www.census.gov/ftp/pub/mp/www/tape/mstap072.html</a>
<b>Source of Data</b>	U.S. Census Bureau
<b>Variables</b>	<b>Population items include:</b> age, race, sex, marital status, Hispanic origin, household relationship, school enrollment, years of school completed, nativity and place of birth, language other than English spoken at home, ability to speak English, ancestry, labor force status in 1979, veteran status, children ever born, place of work, travel time to work, means of transportation to work, private vehicle occupancy, industry, occupation, class of worker, usual hours worked per week in 1979, income in 1979, etc. <b>Housing items include:</b> units in structure, plumbing facilities, number of rooms, tenure, vacancy status, value, rent, year structure built, source of water, sewage disposal, kitchen facilities, heating fuel, number of bedrooms and bathrooms, telephone, air conditioning, number of vehicles available, selected monthly owner costs, etc.
<b>Time Period Coverage</b>	1980, 1979 (for selected variables e.g., income)
<b>Geographic Detail</b>	U.S., regions, divisions, States, SCSA's, SMSA's, UA's, counties, places of 10,000 or more, towns/townships of 10,000 or more, and congressional districts (96 <sup>th</sup> & 97 <sup>th</sup> Congresses).
<b>Years Available</b>	1980
<b>Data Format</b>	1 tape
<b>Cost</b>	\$175
<b>Ordering Information</b>	The 1980 Decennial Census STF3C tape can be ordered through the Census Bureau's Customer Services department at (301) 457-4100; FAX: (301) 457-3842 or 888-249-7295 (toll free).
<b>Summary</b>	The Census of Population and Housing is an enumeration of the United States conducted every ten years in order to collect basic social, economic, and housing characteristics about the U.S. population. Limited data items are collected from 100-percent (short-form) questions, while detailed population and housing characteristics are collected from sample (long-form) questions. See p.7 for more information about the difference between the short and long forms. The 1980 STF3C contains long-form (sample) data from the 1980 Census.
<b>Comments</b>	STF3C is an alternative to purchasing STF3A. STF3C includes the same county data found on the STF3A CD-ROM's. STF3A, in total, contains 12 CD-ROM's because it includes additional small area detail. The STF3C tape is more compact because it includes less geographic detail than the STF3A CD-ROM's.
<b>Data on the Internet?</b>	NO



<b>Dataset</b>	<b>1980 Census of Population and Housing - Summary Tape File 4C (STF4C)</b>
<b>Web Address (Info.)</b>	<a href="http://www.census.gov/ftp/pub/mp/www/tape/mstap073.html">http://www.census.gov/ftp/pub/mp/www/tape/mstap073.html</a>
<b>Source of Data</b>	U.S. Census Bureau
<b>Variables</b>	<b>Population items include:</b> household relationship, sex, race, age, marital status, Hispanic origin, school enrollment, years of school completed, nativity, citizenship and year of immigration, language spoken at home, ability to speak English, ancestry, work disability status, children ever born, marital history, labor force status, place of work, travel time to work, private vehicle occupancy, industry, occupation, class of worker, usual hours worked per week in 1979, income in 1979, poverty status in 1979, etc. <b>Housing items include:</b> plumbing facilities, number of rooms, tenure, vacancy status, value, contract rent, units in structure, year structure built, year householder moved into unit, acreage, source of water, sewage disposal, house heating fuel, cooking fuel, kitchen facilities, number of bedrooms and bathrooms, telephone in housing unit, air conditioning, selected monthly owner costs, etc.
<b>Time Period Coverage</b>	1980, 1979 (for selected variables e.g., income)
<b>Geographic Detail</b>	U.S., regions, Census divisions, States, SCSA's, SMSA's, UA's, counties, places of 10,000 or more, MCD's of 10,000 or more, American Indian reservations and Alaska Native villages and their county components.
<b>Years Available</b>	1980
<b>Data Format</b>	Subfile 1-U.S., regions, divisions, and States (12 tapes) Subfile 3-counties (48 tapes) Subfile 4-places, towns of 10,000+ and Indian reservations (27 tapes)
<b>Cost</b>	Subfile 1 (\$2,100 for 12 tapes); Subfile 3 (\$7,875 for 48 tapes); Subfile 4 (\$4,725 for 27 tapes)
<b>Ordering Information</b>	All of the 1980 Decennial Census STF4C tapes can be ordered through the Census Bureau's Customer Services department at (301) 457-4100; FAX: (301) 457-3842 or 888-249-7295 (toll free).
<b>Summary</b>	The Census of Population and Housing is an enumeration of the United States conducted every ten years in order to collect basic social, economic, and housing characteristics about the U.S. population. Limited data items are collected from 100-percent (short-form) questions, while detailed population and housing characteristics are collected from sample (long-form) questions. See p.7 for more information about the difference between the short and long forms. The 1980 STF4C contains 100-percent and long-form (sample) data from the 1980 Census. STF4C presents data on characteristics for a maximum of 38 race, Spanish origin and/or ancestry categories.
<b>Comments</b>	
<b>Data on the Internet?</b>	NO

<b>Dataset</b>	<b>1980 Census of Population and Housing - Equal Employment Opportunity File (EEO)</b>
<b>Web Address (Info.)</b>	<a href="http://www.census.gov/ftp/pub/mp/www/tape/mstap07h.html">http://www.census.gov/ftp/pub/mp/www/tape/mstap07h.html</a>
<b>Source of Data</b>	U.S. Census Bureau
<b>Variables</b>	Two sample-based sets of tabulations from civilian labor force data collected in the 1980 Census. The first set is a cross-tabulation of 514 detailed Census occupations by sex, race, and Hispanic origin. The second set shows educational attainment for selected age groupings by sex, race, and Hispanic origin.
<b>Time Period Coverage</b>	1980
<b>Geographic Detail</b>	U.S., States, counties, SMSA's, and places of 50,000 or more persons.
<b>Years Available</b>	1980
<b>Data Format</b>	3 tapes
<b>Cost</b>	\$525 for all three tapes; Tapes can be ordered for individual States
<b>Ordering Information</b>	The 1980 Decennial Census EEO tapes can be ordered through the Census Bureau's Customer Services department at (301) 457-4100; FAX: (301) 457-3842 or 888-249-7295 (toll free).
<b>Summary</b>	This file consists of sample tabulations of the civilian labor force, from the 1980 Census of Population and Housing , showing detailed occupations and educational attainment data by age; cross-tabulated by sex, Hispanic origin, and race.
<b>Comments</b>	
<b>Data on the Internet?</b>	NO

<b>Dataset</b>	<b>1980 Census of Population and Housing - County to County Migration</b>
<b>Web Address (Info.)</b>	<a href="http://www.census.gov/ftp/pub/mp/www/tape/mstap07g.html">http://www.census.gov/ftp/pub/mp/www/tape/mstap07g.html</a>
<b>Source of Data</b>	U.S. Census Bureau
<b>Variables</b>	The data for each migration flow consist of a geographic record (area of origin and area of destination) and 20 tables showing the following characteristics, usually cross-tabulated by age and sometimes by race and/or Hispanic origin: Armed Forces status in 1975 and 1980, college attendance in 1975 and 1980, work status in 1975, employment status in 1980, occupation, industry, income in 1979, education, marital status, household relationship, and place of birth.
<b>Time Period Coverage</b>	1975 to 1980
<b>Geographic Detail</b>	Counties (MCD's in New England).
<b>Years Available</b>	1980
<b>Data Format</b>	77 tapes
<b>Cost</b>	\$175 per tape; \$13,475 for all 77 tapes
<b>Ordering Information</b>	The 1980 Decennial Census County to County Migration tapes can be ordered through the Census Bureau's Customer Services department at (301) 457-4100; FAX: (301) 457-3842 or 888-249-7295 (toll free).
<b>Summary</b>	This file includes summary statistics for all intrastate county-to-county migration streams and significant interstate county-to-county migration streams between 1975 and 1980. Each record includes codes for the geographic area of destination and selected characteristics of the persons who made up the migration stream.
<b>Comments</b>	
<b>Data on the Internet?</b>	NO



# **ESTIMATES AND PROJECTIONS DATA**

Dataset	Population Estimates by Age, Sex, Race, and Hispanic Origin: 1990 to 1997		
Web Address (Info.)	<a href="http://www.census.gov/population/www/estimates/popest.html">http://www.census.gov/population/www/estimates/popest.html</a>		
Source of Data	U.S. Census Bureau		
Variables	Age, Sex, Race, and Hispanic Origin. There is a county estimates file which also contains demographic components of population change.		
Time Period Coverage	1990 to 1997		
Geographic Detail	States	Counties*	
Years Available	1990 to 1997	1990 to 1997	
Data Format	1 diskette	Pkg.1	33 diskettes
		Pkg.2	25 diskettes
		Pkg.3	2 diskettes
		Pkg.4	tape
Cost	\$80	\$20 per diskette; Pkg.4 tape is \$250	
Ordering Information	All of the Population estimates diskettes and tapes can be ordered through the Census Bureau's Customer Services department at (301) 457-4100; FAX: (301) 457-3842, 888-249-7295 (toll free), or through the Population Division's Statistical Information Staff at (301) 457-2422.		
Summary	The Population Estimates Program produces estimates for the United States, areas within the United States, and Puerto Rico. The reference date for the estimates is July 1.		
Comments	*Estimates of the Population of Counties and Demographic Components of Change for 1990 to 1997 and revised county population estimates for 1980 to 1989 also are available.		
Data on the Internet?	YES. These data can be viewed and/or downloaded from the web address(es) provided on page 83.		

<b>Dataset</b>	<b>Small Area Income and Poverty Estimates</b>
<b>Web Address (Info.)</b>	<a href="http://www.census.gov/hhes/www/saipe/overview.html">http://www.census.gov/hhes/www/saipe/overview.html</a>
<b>Source of Data</b>	U.S. Census Bureau
<b>Variables</b>	Median household income, number of people below the poverty level, number of children under age 5 below the poverty level (for States only), number of related children ages 5 to 17 years in families below the poverty level, and number of people under age 18 years below the poverty level.
<b>Time Period Coverage</b>	1993 and 1995
<b>Geographic Detail</b>	States and counties.
<b>Years Available</b>	1993 and 1995
<b>Data Format</b>	Downloadable FTP Files and Viewable Tables
<b>Cost</b>	Free
<b>Ordering Information</b>	N/A
<b>Summary</b>	The Small Area Estimates Program for the 1990's updates selected income and poverty estimates from the 1990 Decennial Census. The main objective of the program is to provide updated income and poverty statistics that are needed in the administration of Federal programs and in the allocation of Federal funds to local jurisdictions. The estimates are based on modeled relations between current income and poverty levels and income tax and program data available for counties and States for years following the Decennial Census.
<b>Comments</b>	Estimates will be released periodically in the future.
<b>Data on the Internet?</b>	YES. These data can be viewed and/or downloaded from the web address(es) provided on page 84.

<b>Dataset</b>	<b>Population Projections for States by Age, Sex, Race, and Hispanic Origin: 1995 to 2025</b>
<b>Web Address (Info.)</b>	<a href="http://www.census.gov/population/www/projections/stproj.html">http://www.census.gov/population/www/projections/stproj.html</a>
<b>Source of Data</b>	U.S. Census Bureau
<b>Variables</b>	Age, Sex, Race, and Hispanic origin.
<b>Time Period Coverage</b>	1995 to 2025
<b>Geographic Detail</b>	States
<b>Years Available</b>	1995 to 2025
<b>Data Format</b>	Pkg.1-Preferred Series A only, all States ; 17 diskettes
	Pkg.2-Both Series, one State per diskette; 51 diskettes
	Pkg.3-Both Series, all States; tape
<b>Cost</b>	\$20 per diskette; Pkg. 3 tape package is \$250
<b>Ordering Information</b>	All of the Population projections diskettes and tapes can be ordered through the Census Bureau's Customer Services department at (301) 457-4100; FAX: (301) 457-3842, 888-249-7295 (toll free), or through the Population Division's Statistical Information Staff at (301) 457-2422.
<b>Summary</b>	The Population Projections Program produces projections of the resident population for each of the 50 states and the District of Columbia by age, sex, race, and Hispanic origin, consistent with the national population projections. The state projections are based on state-specific data on births, deaths, international migration, and domestic migration. Although several alternative series are produced, the preferred, or middle series--based on the assumption that past and current trends will continue--is most commonly used. Projections are available for the following race/Hispanic origin groups: 1)Black, 2)American Indian, Eskimo, and Aleut, 3)Asian and Pacific Islander, 4)Hispanic, and 5) non-Hispanic.
<b>Comments</b>	All three packages include components of change. The projections are available both by single year and by every fifth year.
<b>Data on the Internet?</b>	YES. These data can be viewed and/or downloaded from the web address(es) provided on page 84.



# **ECONOMIC CENSUS AND SURVEY DATA**



<b>Dataset</b>	<b>Census of Retail Trade</b>			
<b>Web Address (Info.)</b>	<a href="http://www.census.gov/econ/www/re0100.html">http://www.census.gov/econ/www/re0100.html</a>			
<b>Source of Data</b>	U.S. Census Bureau			
<b>Variables</b>	Basic data obtained for all establishments include kind of business, geographic location, dollar volume of sales, annual and first quarter payroll, and employment for the pay period including March 12. Establishments receiving a census form provide additional data on organization status, sales by class of customer, sales by merchandise line, method of selling, and industry-specific measures (such as number of prescriptions by drug stores).			
<b>Time Period Coverage</b>	Varies for each release of the Economic Census. Each Census measures the activities during the calendar year of its release. For example, the 1992 Census contains data for calendar year 1992.			
<b>Geographic Detail</b>	U.S., States, counties, MA's, places of 2,500 or more, and ZIP Code areas.			
<b>Years Available</b>	1997*	1992	1987	1982
<b>Data Format</b>	TBA	3 CD-ROM's**	5 tapes and 2 CD-ROM's***	3 tapes
<b>Cost</b>	TBA	\$150 per disc	\$175 per tape \$100 per disc	\$175 for 1 tape and \$350 for the other 2 tapes together
<b>Ordering Information</b>	All of the Economic Census CD-ROM's and tapes can be ordered through the Census Bureau's Customer Services department at (301) 457-4100; FAX: (301) 457-3842 or 888-249-7295 (toll free).			
<b>Summary</b>	The Census of Retail Trade provides data on domestic establishments that sell merchandise and related services to the public for personal or household consumption. Normally a store is classified as retail if more than half of its sales are to the general public.			
<b>Comments</b>	<p>*The 1997 Economic Census is expected to be released at varying times during 1999 and 2000.</p> <p>**The Census of Retail Trade is available on the following 1992 Economic Census CD-ROM's: Volume 1 Reports Series disc, Volume 2 Zip Code Statistics disc, and the Volume 4 Nonemployer Statistics disc.</p> <p>***The 1987 Census of Retail Trade is available on 2 CD-ROM's and 5 tapes. There is duplication of data across these data products.</p>			
<b>Data on the Internet?</b>	YES. These data can be viewed and/or downloaded from the web address(es) provided on page 85.			

<b>Dataset</b>	<b>Census of Wholesale Trade</b>			
<b>Web Address (Info.)</b>	<a href="http://www.census.gov/econ/www/wh0100.html">http://www.census.gov/econ/www/wh0100.html</a>			
<b>Source of Data</b>	U.S. Census Bureau			
<b>Variables</b>	All establishments provide data on kind of business, type of operation, geographic location, sales, gross sales, value of goods sold by commissions, commissions, annual and first quarter payroll, number of employees for the pay period including March 12, operating expenses, previous and current end-of-year inventories, and total purchases. Establishments receiving the standard form provide additional data on sales by commodity line, employees by principal activity, and industry-specific measures, such as gallon sales and storage capacity for petroleum products.			
<b>Time Period Coverage</b>	Varies for each release of the Economic Census. Each Census measures the activities during the calendar year of its release. For example, the 1992 Census contains data for calendar year 1992.			
<b>Geographic Detail</b>	U.S., States, counties, MA's, and places of 2,500 or more.			
<b>Years Available</b>	1997*	1992	1987	1982
<b>Data Format</b>	TBA	1 CD-ROM**	3 tapes	2 tapes
<b>Cost</b>	TBA	\$150	\$175 per tape	\$175 per tape
<b>Ordering Information</b>	All of the Economic Census CD-ROM's and tapes can be ordered through the Census Bureau's Customer Services department at (301) 457-4100; FAX: (301) 457-3842 or 888-249-7295 (toll free).			
<b>Summary</b>	The Census of Wholesale Trade provides data on domestic establishments with payroll that sell merchandise to retailers or other wholesalers; sell to industrial, commercial, farm, institutional, or professional users; or act as agents or brokers in buying or selling merchandise for such persons or companies.			
<b>Comments</b>	<p>*The 1997 Economic Census is expected to be released at varying times during 1999 and 2000.</p> <p>**The Census of Wholesale Trade is available on the 1992 Economic Census Volume 1 Report Series disc.</p>			
<b>Data on the Internet?</b>	YES. These data can be viewed and/or downloaded from the web address(es) provided on page 85.			

<b>Dataset</b>	<b>Census of Service Industries</b>			
<b>Web Address (Info.)</b>	<a href="http://www.census.gov/econ/www/se0200.html">http://www.census.gov/econ/www/se0200.html</a>			
<b>Source of Data</b>	U.S. Census Bureau			
<b>Variables</b>	Basic data obtained for all establishments include kind of business, Federal income tax status, geographic location, taxable operating receipts (revenue for tax-exempt establishments), annual and first quarter payroll, and employment for the pay period including March 12. Establishments receiving a census form provide additional data on operational and organizational status, sources of receipts, business characteristics, and industry specific measures such as exports and the number of hotel accommodations. Other measures for tax-exempt organizations include gifts and endowment income.			
<b>Time Period Coverage</b>	Varies for each release of the Economic Census. Each Census measures the activities during the calendar year of its release. For example, the 1992 Census contains data for calendar year 1992.			
<b>Geographic Detail</b>	U.S., States, MA's, counties, places of 2,500 or more, and ZIP Code areas.			
<b>Years Available</b>	1997*	1992	1987	1982
<b>Data Format</b>	TBA	3 CD-ROM's**	3 tapes and 1 CD-ROM	1 tape
<b>Cost</b>	TBA	\$150 per disc	\$175 per tape \$100 for the CD-ROM	\$175
<b>Ordering Information</b>	All of the Economic Census CD-ROM's and tapes can be ordered through the Census Bureau's Customer Services department at (301) 457-4100; FAX: (301) 457-3842 or 888-249-7295 (toll free).			
<b>Summary</b>	The Census of Service Industries provides data on domestic establishments that provide services to consumers, businesses, governments, and other organizations. These include all tax-exempt establishments with payroll classified in SIC Division I except academic and professional schools, labor, political, and religious organizations, and households. Industry coverage has broadened over time; a major expansion in 1977 added coverage of many tax-exempt activities.			
<b>Comments</b>	<p>*The 1997 Economic Census is expected to be released at varying times during 1999 and 2000.</p> <p>**The Census of Service Industries is available on the following 1992 Economic Census CD-ROM's: Volume 1 Reports Series disc, Volume 2 Zip Code Statistics disc, and the Volume 4 Nonemployer Statistics disc.</p>			
<b>Data on the Internet?</b>	YES. These data can be viewed and/or downloaded from the web address(es) provided on page 85.			

<b>Dataset</b>	<b>Census of Manufactures</b>			
<b>Web Address (Info.)</b>	<a href="http://www.census.gov/econ/www/ma0100.html">http://www.census.gov/econ/www/ma0100.html</a>			
<b>Source of Data</b>	U.S. Census Bureau			
<b>Variables</b>	Basic data obtained for all establishments include kind of business, geographic location, type of ownership, total revenue, annual and first quarter payroll, and number of employees in the pay period including March 12. Establishments receiving a long form provide added detail and additional data (including inventories, capital expenditures, identification of some 1,000 materials consumed, cost of materials, energy consumed, and quantity and value of shipments for some 11,000 products). Short forms request much less detail and no identification of materials consumed.			
<b>Time Period Coverage</b>	Varies for each release of the Economic Census. Each Census measures the activities during the calendar year of its release. For example, the 1992 Census contains data for calendar year 1992.			
<b>Geographic Detail</b>	U.S., States, MA's, counties, places with 450 or more manufacturing employees, and ZIP Code areas.			
<b>Years Available</b>	1997*	1992	1987	1982
<b>Data Format</b>	TBA	3 CD-ROM's**	2 CD-ROM's***	4 tapes
<b>Cost</b>	TBA	\$150 per disc	\$100 per disc	\$175 per tape
<b>Ordering Information</b>	All of the Economic Census CD-ROM's and tapes can be ordered through the Census Bureau's Customer Services department at (301) 457-4100; FAX: (301) 457-3842 or 888-249-7295 (toll free).			
<b>Summary</b>	The Census of Manufactures provides data on domestic establishments that are classified in SIC Division D, Manufacturing, and have at least one employee.			
<b>Comments</b>	<p>*The 1997 Economic Census is expected to be released at varying times during 1999 and 2000.</p> <p>**The Census of Manufactures is available on the following 1992 Economic Census CD-ROM's: Volume 1 Reports Series disc, Volume 2 Zip Code Statistics disc, and the Volume 4 Nonemployer Statistics disc.</p> <p>***The Census of Manufactures is available on the 1987 Volume 1E Economic Census disc and the 1987 Volume 2B Zip Code Files disc.</p>			
<b>Data on the Internet?</b>	YES. These data can be viewed and/or downloaded from the web address(es) provided on page 85.			

<b>Dataset</b>	<b>Census of Mineral Industries</b>			
<b>Web Address (Info.)</b>	<a href="http://www.census.gov/econ/www/mi0100.html">http://www.census.gov/econ/www/mi0100.html</a>			
<b>Source of Data</b>	U.S. Census Bureau			
<b>Variables</b>	Basic data obtained for all establishments include kind of business, geographic location, legal form of ownership, total revenue, annual and first quarter payroll, and number of employees for pay period including March 12. Establishments receiving a census form provide added detail on employment, payrolls, worker hours and payroll supplements; and other data (including value of shipments, inventories, capital expenditures, and quantity and value of products, supplies, and fuels). A short form requests only basic data, capital expenditures, and quantity and value of products.			
<b>Time Period Coverage</b>	Varies for each release of the Economic Census. Each Census measures the activities during the calendar year of its release. For example, the 1992 Census contains data for calendar year 1992.			
<b>Geographic Detail</b>	U.S., States, and counties.			
<b>Years Available</b>	1997*	1992	1987	1982
<b>Data Format</b>	TBA	1 CD-ROM**	Print and/or Microfiche***	Print and/or Microfiche***
<b>Cost</b>	TBA	\$150	Not available for purchase	Not available for purchase
<b>Ordering Information</b>	All of the Economic Census CD-ROM's and tapes can be ordered through the Census Bureau's Customer Services department at (301) 457-4100; FAX: (301) 457-3842 or 888-249-7295 (toll free).			
<b>Summary</b>	The Census of Mineral Industries provides data on domestic mining establishments that are classified in SIC Division B, Mining, and have at least one employee.			
<b>Comments</b>	<p>*The 1997 Economic Census is expected to be released at varying times during 1999 and 2000.</p> <p>**The Census of Mineral Industries is available on the 1992 Economic Census Volume 1 Reports Series CD-ROM.</p> <p>***Printed copies of the Census of Mineral Industries can be viewed at the Census Bureau Library in Suitland, Maryland. Call the Census Bureau Library at (310) 457-2507 to make arrangements. Some reports are accessible through a number of Federal Depository libraries.</p>			
<b>Data on the Internet?</b>	YES. These data can be viewed and/or downloaded from the web address(es) provided on page 85.			


<b>Dataset</b>	<b>Survey of Minority-Owned Business Enterprises</b>			
<b>Web Address (Info.)</b>	<a href="http://www.census.gov/csd/mwb/">http://www.census.gov/csd/mwb/</a> <a href="http://www.census.gov/econ/www/mu0200.html">http://www.census.gov/econ/www/mu0200.html</a>			
<b>Source of Data</b>	U.S. Census Bureau			
<b>Variables</b>	Data items include the number of minority-owned firms, sales and receipts, annual payroll, and employment. The data are presented geographically and by industry, size of firms, and legal form of organization (sole proprietorships, partnerships, and corporations).			
<b>Time Period Coverage</b>	Varies for each release of the Survey of Minority-Owned Business Enterprises (SMOBE). Each Survey measures the activities during the calendar year of its release. For example, the 1992 SMOBE contains data for 1992.			
<b>Geographic Detail</b>	U.S., States, counties, places, and MA's.			
<b>Years Available</b>	1997*	1992	1987	1982
<b>Data Format</b>	TBA	1 CD-ROM**	1 CD-ROM	Print and/or Microfiche***
<b>Cost</b>	TBA	\$150	\$100	Not available for purchase
<b>Ordering Information</b>	The Survey of Minority-Owned Business Enterprises can be obtained through the Census Bureau's Customer Services department at (301) 457-4100; FAX: (301) 457-3842 or 888-249-7295 (toll free). To obtain information about printed reports and microfiche, contact the Census Bureau Library's Reference Desk at (301) 457-2511.			
<b>Summary</b>	The Survey of Minority-Owned Business Enterprises (SMOBE) and the Survey of Women-Owned Business Enterprises (SWOBE) are the only comprehensive, regularly collected sources of information on business owner's race, ethnicity, and gender. The SMOBE and SWOBE utilize a national sample of business firms randomly selected by business type and geographic area. A firm is classified as minority- or women-owned if the person(s) owning the majority interest in the business are African American, Asian American or Pacific Islander, American Indian, Alaska Native or Aleut, of Spanish/Hispanic/Latino origin, or women. The SMOBE and SWOBE are based on whole firms rather than on establishments of firms.			
<b>Comments</b>	<p>*The 1997 Survey of Minority-Owned Business Enterprises is expected to be released in late 2000.</p> <p>**The Survey of Minority-Owned Business Enterprises is available on the 1992 Economic Census Volume 1 Reports Series CD-ROM.</p> <p>*** Printed reports and microfiche copies of the SMOBE and SWOBE data can be viewed at the Census Bureau Library in Suitland, Maryland. Some reports are accessible through a number of Federal Depository libraries.</p>			
<b>Data on the Internet?</b>	YES. These data can be viewed and/or downloaded from the web address(es) provided on page 85.			

<b>Dataset</b>	<b>Survey of Women-Owned Business Enterprises</b>			
<b>Web Address (Info.)</b>	<a href="http://www.census.gov/csd/mwb/">http://www.census.gov/csd/mwb/</a> <a href="http://www.census.gov/econ/www/mu0200.html">http://www.census.gov/econ/www/mu0200.html</a>			
<b>Source of Data</b>	U.S. Census Bureau			
<b>Variables</b>	Data items include the number of women-owned firms, sales and receipts, annual payroll, and employment. The data are presented geographically and by industry, size of firms, and legal form of organization (sole proprietorships, partnerships, and corporations).			
<b>Time Period Coverage</b>	Varies for each release of the Survey of Women-Owned Business Enterprises (SWOBE). Each survey measures the activities during the calendar year of its release. For example, the 1992 SWOBE contains data for 1992.			
<b>Geographic Detail</b>	U.S., States, counties, places, and MA's.			
<b>Years Available</b>	1997*	1992	1987	1982
<b>Data Format</b>	TBA	1 CD-ROM**	1 CD-ROM	Print and/or Microfiche***
<b>Cost</b>	TBA	\$150	\$100	Not available for purchase
<b>Ordering Information</b>	The Survey of Women-Owned Business Enterprises can be obtained through the Census Bureau's Customer Services department at (301) 457-4100; FAX: (301) 457-3842 or 888-249-7295 (toll free). To obtain information about printed reports and microfiche, contact the Census Bureau Library's Reference Desk at (301) 457-2511.			
<b>Summary</b>	The Survey of Women-Owned Business Enterprises (SWOBE) and the Survey of Minority-Owned Business Enterprises (SMOBE) are the only comprehensive, regularly collected sources of information on business owner's race, ethnicity, and gender. The SMOBE and SWOBE utilize a national sample of business firms randomly selected by business type and geographic area. A firm is classified as minority- or women-owned if the person(s) owning the majority interest in the business are African American, Asian American or Pacific Islander, American Indian, Alaska Native or Aleut, of Spanish/Hispanic/Latino origin, or women. The SMOBE and SWOBE are based on whole firms rather than on establishments of firms.			
<b>Comments</b>	<p>*The 1997 Survey of Women-Owned Business Enterprises is expected to be released in late 2000.</p> <p>**The Survey of Women-Owned Business Enterprises is available on the 1992 Economic Census Volume 1 Reports Series CD-ROM.</p> <p>***Printed reports and microfiche copies of the SMOBE and SWOBE data can be viewed at the Census Bureau Library in Suitland, Maryland. Some reports are accessible through a number of Federal Depository libraries.</p>			
<b>Data on the Internet?</b>	YES. These data can be viewed and/or downloaded from the web address(es) provided on page 85.			



<b>Dataset</b>	<b>Nonemployer Statistics</b>			
<b>Web Address (Info.)</b>	<a href="http://www.census.gov/econ/www/mu0500.html">http://www.census.gov/econ/www/mu0500.html</a>			
<b>Source of Data</b>	U.S. Census Bureau			
<b>Variables</b>	Information for nonemployer establishments includes business location, industry, classification, form of organization, and operating data (e.g., receipts or income). Sole proprietor "establishments" are separate tax Schedule C forms, and partnership and corporate "establishments" are separate Employer Identification Numbers (EINs).			
<b>Time Period Coverage</b>	Varies for each release of the Economic Census. Each Census measures the activities during the calendar year of its release. For example, the 1992 Census contains data for calendar year 1992.			
<b>Geographic Detail</b>	U.S., States, counties, MA's, and places of 2,500 or more.			
<b>Years Available</b>	1997*	1992	1987	1982
<b>Data Format</b>	TBA	1 CD-ROM	Print and/or Microfiche**	Print and/or Microfiche**
<b>Cost</b>	TBA	\$150	Not available for purchase	Not available for purchase
<b>Ordering Information</b>	All of the Economic Census CD-ROM's can be ordered through the Census Bureau's Customer Services department at (301) 457-4100; FAX: (301) 457-3842 or 888-249-7295 (toll free).			
<b>Summary</b>	Nonemployer Statistics counts and profiles U.S. businesses with no paid employment and payroll.			
<b>Comments</b>	<p>*The 1997 Economic Census is expected to be released at varying times during 1999 and 2000.</p> <p>**Printed reports and microfiche copies of Nonemployer Statistics from the Economic Census can be viewed at the Census Bureau Library in Suitland, Maryland. Call the Census Bureau Library at (310) 457-2507 to make arrangements. Some reports are accessible through a number of Federal Depository libraries.</p>			
<b>Data on the Internet?</b>	YES. These data can be viewed and/or downloaded from the web address(es) provided on page 85.			





# **CENSUS OF AGRICULTURE DATA**

<b>Dataset</b>	<b>Census of Agriculture</b>			
<b>Web Address (Info.)</b>	<a href="http://www.census.gov/econ/www/ag0100.html">http://www.census.gov/econ/www/ag0100.html</a> <a href="http://www.nass.usda.gov/census/">http://www.nass.usda.gov/census/</a>			
<b>Source of Data</b>	U.S. Census Bureau*			
<b>Variables</b>	<p>All operators of U.S. farms or ranches provide crop acreage and quantities harvested, inventories of livestock and poultry, value of products sold, land use and ownership, irrigation activities, amount of commodity credit loans, number of hired laborers, federal program payments, and operator characteristics. Selected operators provide additional information on production expenses (including interest), fertilizer and chemical use, machinery and equipment, market value of land and buildings, and income from farm-related sources.</p>			
<b>Time Period Coverage</b>	Each Census of Agriculture measures the activities during the calendar year of its release. For example, the 1992 Census of Agriculture contains data for calendar year 1992.			
<b>Geographic Detail</b>	U.S., States, counties, Puerto Rico, and ZIP Code areas.			
<b>Years Available</b>	1997	1992	1987	1982
<b>Data Format</b>	TBA	2 CD-ROM's	1 CD-ROM	2 tapes (1 for State and 1 for County)
<b>Cost</b>	TBA	\$150 for set of 2	\$150	\$175 per tape
<b>Ordering Information</b>	<p>All of the Census of Agriculture CD-ROM's and tapes can be ordered through the Census Bureau's Customer Services department at (301) 457-4100; FAX: (301) 457-3842 or 888-249-7295 (toll free).</p>			
<b>Summary</b>	The Census of Agriculture provides periodic and comprehensive statistics about agricultural operations, production, operators, and land use.			
<b>Comments</b>	<p>*The 1997 Census of Agriculture will be the responsibility of the United States Department of Agriculture, Agricultural Statistics Service (NASS), not the U.S. Census Bureau. For more information about the 1997 Census of Agriculture, see the NASS' Census of Agriculture web site at <a href="http://www.nass.usda.gov/census/">http://www.nass.usda.gov/census/</a>.</p> <p>The 1992 Census of Agriculture CD-ROM's contain data for 1992, 1987, and 1982 with the exception of State cross-tabulations showing data by various farm classifications (e.g., size of farm), which are available for 1992 only. Likewise, the 1987 CD-ROM contains county data for 1987, 1982, and 1978.</p>			
<b>Data on the Internet?</b>	YES. These data can be viewed and/or downloaded from the web address(es) provided on page 86.			



# **COUNTY-LEVEL DATA COMPILATIONS**

<b>Dataset</b>	<b>County and City Data Book</b>			
<b>Web Address (Info.)</b>	<a href="http://www.census.gov/statab/www/ccdb.html">http://www.census.gov/statab/www/ccdb.html</a>			
<b>Source of Data</b>	U.S. Census Bureau*			
<b>Variables</b>	Variables cover subjects such as area and population, population by race, Hispanic origin, and age, population characteristics and group quarters population, vital statistics and health care, special programs and crime, education, poverty, housing, labor force, personal income and earnings, wholesale and retail trade, agriculture, manufactures, service industries, government employment and more.			
<b>Time Period Coverage</b>	Each County and City Data Book varies in time period coverage. The 1994 County and City Data Book contains data from 1987 through 1992.			
<b>Geographic Detail</b>	U.S., States, regions, divisions, counties, cities of 25,000 or more persons, and places of 2,500 or more.			
<b>Years Available</b>	1999**	1994	1988	1983
<b>Data Format</b>	CD-ROM	1 CD-ROM	1 tape	1 tape
<b>Cost</b>	TBA	\$150	\$175	\$90
<b>Ordering Information</b>	Years 1994 and 1988 can be ordered through the Census Bureau's Customer Services department at (301) 457-4100; FAX: (301) 457-3842 or 888-249-7295 (toll free). The 1983 tape can be obtained through the National Archives & Records Administration at (301) 713-6630.			
<b>Summary</b>	Demographic, economic, and governmental data are presented for cities, counties, and places of 2,500 or more inhabitants.			
<b>Comments</b>	<p>*The County and City Data Books contain data collected by the U.S. Census Bureau, other Federal government agencies, and private organizations.</p> <p>** The 1999 County and City Data Book is expected to be available at the end of 1999 or early 2000.</p> <p>When the 1994 County and City Data Book CD-ROM is purchased together with the 1996 USA Counties CD-ROM, a copy of the 1997 Statistical Abstract of the United States CD-ROM is included free of charge.</p>			
<b>Data on the Internet?</b>	YES. These data can be viewed and/or downloaded from the web address(es) provided on page 87.			

<b>Dataset</b>	<b>USA Counties</b>	
<b>Web Address (Info.)</b>	<a href="http://www.census.gov/mp/www/rom/msrom3ca.html">http://www.census.gov/mp/www/rom/msrom3ca.html</a>	
<b>Source of Data</b>	U.S. Census Bureau*	
<b>Variables</b>	Over 3,000 data items covering subjects such as age, agriculture, ancestry, banking, business, crime, earnings, education, elections, federal government, health, households, housing, labor force and employment, local government, manufactures, money income, personal income, population, poverty, retail trade, service industries, social programs, veterans, vital statistics, and wholesale trade.	
<b>Time Period Coverage</b>	Time coverage varies for each edition of USA Counties. The 1996 CD-ROM contains all county data from the 1994, 1988, 1983 County and City Data Books and the 1991 and 1986 State and Metropolitan Area Data Books.	
<b>Geographic Detail</b>	States and counties or county equivalents.	
<b>Years Available</b>	1998	1996 (supersedes 1994, which is no longer available)
<b>Data Format</b>	CD-ROM	1 CD-ROM
<b>Cost</b>	\$150	\$150
<b>Ordering Information</b>	USA Counties 1996 can be ordered through the Census Bureau's Customer Services department at (301) 457-4100; FAX: (301) 457-3842 or 888-249-7295 (toll free).	
<b>Summary</b>	Demographic, economic, and governmental data are presented for the purpose of multi-area comparisons or single area profiles.	
<b>Comments</b>	<p>*USA Counties contains data collected by the U.S. Census Bureau, other Federal Agencies such as the Bureau of Labor Statistics, the Bureau of Economic Analysis, and the Federal Bureau of Investigation, and several private organizations such as the American Medical Association and the Elections Research Center.</p> <p>When the 1996 USA Counties CD-ROM is purchased together with the 1994 County and City Data Book CD-ROM, a copy of the 1997 Statistical Abstract of the United States CD-ROM is included free of charge.</p>	
<b>Data on the Internet?</b>	YES. These data can be viewed and/or downloaded from the web address(es) provided on page 88.	

<b>Dataset</b>	<b>County Business Patterns</b>	
<b>Web Address (Info.)</b>	<a href="http://www.census.gov/epcd/cbp/view/cbpview.html">http://www.census.gov/epcd/cbp/view/cbpview.html</a>	
<b>Source of Data</b>	U.S. Census Bureau*	
<b>Variables</b>	Data are provided by 2, 3, and 4-digit Standard Industrial Classifications (SIC) on total number of establishments, mid-March employment, first quarter and annual payroll, and number of establishments by employment-size classes.	
<b>Time Period Coverage</b>	Time coverage varies for each County Business Patterns CD-ROM and tape. For example, the 1995 & 1996 County Business Patterns CD-ROM contains data for 1995 and 1996.	
<b>Geographic Detail</b>	U.S., States, and counties (data for Puerto Rico are released only in publication format).	
<b>Years Available</b>	1986-1995	1974-1995
<b>Data Format</b>	1 CD-ROM for each 2 year period (e.g., 1995 and 1996)	1–2 tapes per year
<b>Cost</b>	\$150	\$175 or \$200 (depending on the size of the file)
<b>Ordering Information</b>	All of the County Business Patterns CD-ROM's and tapes can be ordered through the Census Bureau's Customer Services department at (301) 457-4100; FAX: (301) 457-3842 or 888-249-7295 (toll free). County Business Patterns tapes for the years 1974-1987 can be obtained through the National Archives & Records Administration at (301) 713-6630.	
<b>Summary</b>	County Business Patterns is an annual series that provides subnational economic data by industry. The series is useful for studying the economic activity of small areas; analyzing economic changes over time; and as a benchmark for statistical series, surveys, and databases between economic censuses. The series serves various business uses such as analyzing market potential, measuring the effectiveness of sales and advertising programs, setting sales quotas, and developing budgets. The data are also used by government agencies for administration and planning. Data are provided by industry in the following economic divisions: agricultural services, forestry and fishing; mining; construction; manufacturing; transportation and public utilities; wholesale trade; retail trade; finance, insurance, and real estate; and services.	
<b>Comments</b>	*County Business Patterns contains data collected by the U.S. Census Bureau, the Internal Revenue Service, the Social Security Administration, and the Bureau of Labor Statistics.	
<b>Data on the Internet?</b>	YES. These data can be viewed and/or downloaded from the web address(es) provided on page 87.	

<b>Dataset</b>	<b>CountyScope</b>
<b>Web Address (Info.)</b>	<a href="http://www.census.gov/mp/www/rom/msrom3d.html">http://www.census.gov/mp/www/rom/msrom3d.html</a>
<b>Source of Data</b>	U.S. Census Bureau
<b>Variables</b>	Variables cover a variety of demographic, economic, and geographic topics.
<b>Time Period Coverage</b>	Varies. 1990 Census of Population and Housing Data, 1987 and 1992 Economic Census Data, 1994-1995 County Business Patterns data, 1995 ZIP Business Patterns data, 1987/96 Consolidated Federal Funds Report data, 1995 TIGER/Line Files, and data from the Census Tract Street Index, Version 2.
<b>Geographic Detail</b>	Counties, places, ZIP Code areas, Census tracts, block groups, and blocks.
<b>Years Available</b>	N/A (This is a custom disc which is created by customer request)
<b>Data Format</b>	CD-ROM
<b>Cost</b>	\$400 for the first metropolitan county, \$100 for each additional metropolitan county; \$300 for the first non-metropolitan county, \$60 for each additional non-metropolitan county.
<b>Ordering Information</b>	CountyScope can be ordered through the Census Bureau's Customer Services department at (301) 457-4100; FAX: (301) 457-3842 or 888-249-7295 (toll free). Due to the customized nature of this product, inquiries about CountyScope's content can be addressed to the Data Product Development Branch at (301) 457-1326.
<b>Summary</b>	CountyScope compiles data from over a dozen leading census products for a customer-specified county or counties. The disc is customized according to counties, not according to specific variables.
<b>Comments</b>	A demonstration disc has been produced to enable decision-makers to look over a sample product before making a commitment to purchase the product. This disc is available from Customer Services for \$10.00. It contains 10 non-metropolitan counties and 1 metropolitan county in South Carolina.
<b>Data on the Internet?</b>	NO



# **GOVERNMENT DATA**



<b>Dataset</b>	<b>Consolidated Federal Funds Report (CFFR)</b>				
<b>Web Address (Info.)</b>	<a href="http://www.census.gov/govs/www/cffr.html">http://www.census.gov/govs/www/cffr.html</a>				
<b>Source of Data</b>	U.S. Census Bureau*				
<b>Variables</b>	Data obtained from Federal government agencies on Federal expenditures and obligations for the following categories: grants, salaries and wages, procurement contracts, direct payments for individuals, other direct payments, direct loans, guaranteed or insured loans, and insurance. Dollar amounts reported represent either actual expenditures or obligations.				
<b>Time Period Coverage</b>	Annual report beginning in 1983.				
<b>Geographic Detail</b>	States, counties and subcounty areas of the U.S., and U.S. territories.				
<b>Years Available</b>	1987-1996	1986-1995	1985-1994	1984-1993	1983-1992
<b>Data Format</b>	1 CD-ROM	1 CD-ROM	1 CD-ROM	1 CD-ROM	1 CD-ROM
<b>Cost</b>	\$150	\$150	\$150	\$150	\$150
<b>Ordering Information</b>	CFFR CD-ROM's can be ordered through the Census Bureau's Customer Services department at (301) 457-4100; FAX: (301) 457-3842 or 888-249-7295 (toll free).				
<b>Summary</b>	The Consolidated Federal Funds Report is an annual report of Federal expenditures and obligations data compiled from government agencies. The CFFR Data File gives the government identification code, program identification code, object/assistance type code, amount in whole dollars, and FIPS geographic code. For each unique government unit code, all programs are listed and for each program, all records with different object categories are listed. The CFFR Geographic Reference File contains the name and governmental unit code for all State, county and subcounty areas in the nation. In addition, each file contains associated geographic codes, 1990 Census population count, and the codes for congressional districts for each governmental unit. The Geographic Reference File also includes limited aggregate information from the Federal Assistance Awards Data System .				
<b>Comments</b>	*The Consolidated Federal Funds Report contains data collected from various Federal government agencies. Each CD-ROM contains ten years of annual report data. The 1997 and 1998 CFFR data are available on the Internet. Data for these and subsequent years will no longer be released on CD-ROM.				
<b>Data on the Internet?</b>	YES. These data can be viewed and/or downloaded from the web address(es) provided on page 89.				

<b>Dataset</b>	<b>Census of Governments, Finance Statistics</b>		
<b>Web Address (Info.)</b>	<a href="http://www.census.gov/ftp/pub/econ/www/go0100.html">http://www.census.gov/ftp/pub/econ/www/go0100.html</a>		
<b>Source of Data</b>	U.S. Census Bureau*		
<b>Variables</b>	Includes data on revenue, expenditures, indebtedness, and debt transactions. Cash and security holdings are provided for State and local governments. Revenue data are provided by source. Expenditures are shown by function such as education, highways, and public welfare, and by type such as intergovernmental, current operation, and capital outlay. Outstanding indebtedness is shown by type of debt. The asset data appear by purpose and type of financial asset.		
<b>Time Period Coverage</b>	Assessment and finance data are for the fiscal year prior to July.		
<b>Geographic Detail</b>	U.S., States, counties, cities, townships, special districts, and school districts.		
<b>Years Available</b>	1992	1987	1982
<b>Data Format</b>	2 CD-ROM's	8 tapes (Files A, B, & C)**	3 tapes (Files A, B, & C)**
<b>Cost</b>	\$250 for both CD-ROM's; \$150 per disc	\$1,400 for all 8 tapes; \$175 per tape	\$525 for all 3 tapes; \$175 per tape
<b>Ordering Information</b>	All of the Census of Governments CD-ROM's and tapes can be ordered through the Census Bureau's Customer Services department at (301) 457-4100; FAX: (301) 457-3842 or 888-249-7295 (toll free).		
<b>Summary</b>	The Census of Governments provides periodic and comprehensive statistics about governments and governmental activities. The finance statistics from the Census of Governments includes expenditure, debt, revenue, and asset data. These data are used by the Bureau of Economic Analysis and Federal Reserve Board to assess the government sector of our economy. State and local governments use these data to develop programs and budgets, assess financial conditions, and complete comparative analyses.		
<b>Comments</b>	*The Census of Governments contains data collected by the U.S. Census Bureau, which is supplemented by data collected by Federal agencies. **File A contains data for individual governments. File B contains the county area summary. File C contains the U.S. and State summaries for separate summary levels.		
<b>Data on the Internet?</b>	NO		




# **OTHER FEDERAL AGENCY DATA**



# **BUREAU OF ECONOMIC ANALYSIS, REGIONAL ACCOUNTS DATA**

<b>Dataset</b>	<b>Wage and Salary Disbursements, Wage and Salary Employment, and Average Wage per Job by County and Metropolitan Area, CA-34</b>		
<b>Web Address (Info.)</b>	<a href="http://www.bea.doc.gov/bea/regional/reis/ca34/index.htm">http://www.bea.doc.gov/bea/regional/reis/ca34/index.htm</a>		
<b>Source of Data</b>	Bureau of Economic Analysis (see summary)		
<b>Variables</b>	Total wage and salary disbursements, total wage employment, and average wages.		
<b>Time Period Coverage</b>	1969 to 1996 (CD-ROM) 1969 to 1997 (Compressed file) 1994 to 1997 (HTML tables)		
<b>Geographic Detail</b>	Counties and MSA's.		
<b>Years Available</b>	1969 to 1996	1969 to 1997	1994 to 1997
<b>Data Format</b>	CD-ROM*	Downloadable Compressed File	Viewable HTML Tables
<b>Cost</b>	\$35	Free	Free
<b>Ordering Information</b>	The CA-34 dataset can be obtained on the REIS CD-ROM, which can be ordered from the Bureau of Economic Analysis' Order Desk using Visa or MasterCard. Call 1-800-704-0415 from anywhere in the U.S. (outside the U.S., call (202) 606-9666).		
<b>Summary</b>	The Bureau of Economic Analysis' local area estimates are based on data from the Bureau of Labor Statistics (BLS) on employment and wages for workers covered by State unemployment insurance (UI) and unemployment compensation for Federal employees (UCFE). In order to provide complete coverage for all wages and salaries earned in the United States, the UI and UCFE data are adjusted for workers not covered by UI and UCFE programs and for underreporting and misreporting under these programs.		
<b>Comments</b>	*CA-34 is available on the Regional Economic Information System (REIS) CD-ROM which contains data on personal income, employment, transfer payments, and farm income and expenses for States, metropolitan areas, and counties. The REIS also includes data on Gross state product, projections to 2045 of income and employment for States and metropolitan areas, quarterly personal income by State, county-level gross commuters' income flows, Census Bureau data on intercounty commuting flows, and Census Bureau county-level commuting flows and average wage data.		
<b>Data on the Internet?</b>	YES. These data can be viewed and/or downloaded from the web address(es) provided on pages 90-91.		

<b>Dataset</b>	<b>Personal Income and Per Capita Personal Income by County and Metropolitan Area, CA1-3: 1969-1996</b>	
<b>Web Address (Info.)</b>	<a href="http://www.bea.doc.gov/bea/regional/reis/ca1_3.htm">http://www.bea.doc.gov/bea/regional/reis/ca1_3.htm</a>	
<b>Source of Data</b>	Bureau of Economic Analysis (see summary)	
<b>Variables</b>	Personal income, total population, and per capita personal income.	
<b>Time Period Coverage</b>	1969 to 1996 (CD-ROM) 1969 to 1997 (Compressed Files)	
<b>Geographic Detail</b>	Counties and MSA's.	
<b>Years Available</b>	1969 to 1996	1969 to 1997
<b>Data Format</b>	CD-ROM*	Downloadable Compressed Files
<b>Cost</b>	\$35	Free
<b>Ordering Information</b>	The CA1-3 dataset can be obtained on the REIS CD-ROM, which can be ordered from the Bureau of Economic Analysis' Order Desk using Visa or MasterCard. Call 1-800-704-0415 from anywhere in the U.S. (outside the U.S., call (202) 606-9666).	
<b>Summary</b>	CA1-3 presents estimates of personal income and per capita personal income for counties and metropolitan areas. The estimates are primarily based on Census data (e.g., the Census of Population and Housing and the Census of Agriculture) and on administrative records-data collected by various Federal and State government programs. Examples of such Federal and State government programs include: the State unemployment insurance programs of the Employment and Training Administration Department, Department of Labor; the social insurance programs of the Social Security Administration and the Health Care Financing Administration, Department of Health and Human Services; the Federal income tax program of the Internal Revenue Service, Department of the Treasury; and the veterans benefit programs of the Department of Veterans Affairs. About 10 percent of the estimates are based on data from other sources such as county estimates of cash receipts.	
<b>Comments</b>	*CA1-3 is available on the Regional Economic Information System (REIS) CD-ROM which contains data on personal income, employment, transfer payments, and farm income and expenses for States, metropolitan areas, and counties. The REIS also includes data on Gross state product, projections to 2045 of income and employment for States and metropolitan areas, quarterly personal income by State, county-level gross commuters' income flows, Census Bureau data on intercounty commuting flows, and Census Bureau county-level commuting flows and average wage data.	
<b>Data on the Internet?</b>	YES. These data can be viewed and/or downloaded from the web address(es) provided on pages 90-91.	




# **BUREAU OF LABOR STATISTICS, EMPLOYMENT AND UNEMPLOYMENT STATISTICS**

<b>Dataset</b>	<b>Employment and Average Annual Pay for Large Counties</b>
<b>Web Address (Info.)</b>	<a href="http://stats.bls.gov/news.release/eaapc.toc.htm">http://stats.bls.gov/news.release/eaapc.toc.htm</a>
<b>Source of Data</b>	Bureau of Labor Statistics (see summary)
<b>Variables</b>	Employment 1996, percent change in employment from 1995 to 1996, average annual pay 1996, and the percent change in average annual employment from 1995 to 1996.
<b>Time Period Coverage</b>	1996 (including percent change from 1995)
<b>Geographic Detail</b>	290 largest counties
<b>Years Available</b>	1996 (including percent change from 1995)
<b>Data Format</b>	Viewable through browser
<b>Cost</b>	Free
<b>Ordering Information</b>	Average annual employment and pay data by state and county are available upon request from the Division of Occupational and Administrative Statistics, Bureau of Labor Statistics, U.S. Department of Labor, Washington, DC 20212, telephone (202) 606-6567.
<b>Summary</b>	Employment and annual pay data by county are compiled by the Bureau of Labor Statistics from reports submitted by employers subject to State and Federal unemployment insurance (UI) laws, covering 118 million full- and part-time workers. The data are derived from summaries of employment and total pay of workers covered by unemployment insurance (UI) legislation and provided by State Employment Security Agencies (SESA's).
<b>Comments</b>	
<b>Data on the Internet?</b>	YES. These data can be viewed and/or downloaded from the web address(es) provided on page 92.



<b>Dataset</b>	<b>Local Area Unemployment Statistics</b>
<b>Web Address (Info.)</b>	<a href="http://stats.bls.gov/lauov.htm">http://stats.bls.gov/lauov.htm</a>
<b>Source of Data</b>	Bureau of Labor Statistics (see summary)
<b>Variables</b>	Employment, labor force, unemployment, and unemployment rate.
<b>Time Period Coverage</b>	1978 to 1999
<b>Geographic Detail</b>	States, MSA's, PMSA's, counties and county equivalents, cities of 25,000 population or more, and all cities and towns in New England.
<b>Years Available</b>	1978 to 1999
<b>Data Format</b>	Downloadable Files and HTML Tables
<b>Cost</b>	Free
<b>Ordering Information</b>	Requests for information and/or data on local area unemployment statistics can be directed to the Local Area and Unemployment Statistics Division at the Bureau of Labor Statistics at (202) 606-6392.
<b>Summary</b>	Statistics on the employment status of the population and related data are compiled by the Bureau of Labor Statistics (BLS) using data from the Current Population Survey (CPS). This monthly survey of households is conducted for BLS by the U.S. Census Bureau through a scientifically selected sample designed to represent the civilian noninstitutional population. Estimates are prepared for counties using disaggregation techniques based on decennial and annual population estimates and current unemployment insurance statistics, or decennial labor force estimates.
<b>Comments</b>	All unemployment variables are available as "seasonally adjusted" and "not seasonally adjusted". Smaller areas, such as counties, are not seasonally adjusted.
<b>Data on the Internet?</b>	YES. These data can be viewed and/or downloaded from the web address(es) provided on page 92.



# **NATIONAL CENTER FOR HEALTH STATISTICS, VITAL STATISTICS**

<b>Dataset</b>	<b>Natality Data, Public-Use Data Files from the National Vital Statistics System</b>	
<b>Web Address (Info.)</b>	<a href="http://www.cdc.gov/nchswww/products/catalogs/subject/natality/natality.htm">http://www.cdc.gov/nchswww/products/catalogs/subject/natality/natality.htm</a> - description1	
<b>Source of Data</b>	National Center for Health Statistics	
<b>Variables</b>	The detail file includes variables such as the age, race, and Hispanic origin of the mother, father, and child, marital status, birth date and weight, place of delivery, pregnancy history of mother, etc. From 1989 to 1996, new variables were included such as alcohol and tobacco use, education of mother and father, and weight gain during pregnancy. The local area summary file includes variables such as the residence and age of mother, the sex and race of child, birth weight, and the attendant at and place of delivery. The State summary file includes the State of residence, race and sex of child, plurality, live birth order, age of mother, birth weight, and total birth order.	
<b>Time Period Coverage</b>	Varies for each of the three files that comprise the Natality Public-Use Data File. The detail file is available for the years 1968 to 1996. The Local Area Summary is available for the years 1968 to 1988. The State Summary is available for the years 1968 to 1988.	
<b>Geographic Detail</b>	States, counties, cities, and MA's.	
<b>Years Available</b>	Detail File 1991 to 1996	Detail File 1968 to 1996 Local Area Summary 1968 to 1988 State Summary 1968 to 1988
<b>Data Format</b>	CD-ROM	tape
<b>Cost</b>	GPO: Detail file is \$15 per year for 1994-1996 and \$20 per year for 1991 and 1992. NTIS: the Detail file is \$60 per year for 1991, 1992, 1993, 1994, and 1996.	Detail File \$1,029-\$2,743 per year Local Area Summary \$305-\$604 per year State Summary \$305 per year
<b>Ordering Information</b>	The data tapes can only be purchased through the National Technical Information Service (NTIS). The CD-ROM's can be purchased from NTIS and the Government Printing Office (GPO). NTIS orders can be placed by telephone at (703) 605-6000 or 1-800-553-NTIS; or through the Internet at <a href="http://www.ntis.gov/ordering.htm">http://www.ntis.gov/ordering.htm</a> . GPO orders can be placed by telephone at (202) 512-1800; by FAX at (202) 512-2250; or through the Internet at <a href="http://www.access.gpo.gov/su_docs/sale.html">http://www.access.gpo.gov/su_docs/sale.html</a> .	
<b>Summary</b>	The Natality public-use data file includes all births occurring within the United States. Data are obtained from certificates filed for births occurring in each state.	
<b>Comments</b>		
<b>Data on the Internet?</b>	NO	

<b>Dataset</b>	<b>Compressed Mortality Public-Use Data File from the National Vital Statistics System</b>
<b>Web Address (Info.)</b>	<a href="http://www.cdc.gov/nchswww/products/catalogs/subject/mcompres/mcompres.htm">http://www.cdc.gov/nchswww/products/catalogs/subject/mcompres/mcompres.htm</a>
<b>Source of Data</b>	National Center for Health Statistics
<b>Variables</b>	State and county of residence, year of death, race (recoded to white, black, and other races), sex, age group at death (specific age recoded to 16 age groups), and underlying cause of death (4-digit ICD code).
<b>Time Period Coverage</b>	1968 to 1988
<b>Geographic Detail</b>	States and counties.
<b>Years Available</b>	1968 to 1988
<b>Data Format</b>	tape
<b>Cost</b>	\$742
<b>Ordering Information</b>	The Compressed Mortality File can only be purchased through the National Technical Information Service (NTIS). NTIS orders can be placed by telephone at (703) 605-6000 or 1-800-553-NTIS; or through the Internet at the NTIS web site at <a href="http://www.ntis.gov/ordering.htm">http://www.ntis.gov/ordering.htm</a> .
<b>Summary</b>	The Compressed Mortality File (CMF) is a county-level national mortality and population database. Mortality data on the CMF are based on NCHS mortality files that include a record for every death in the United States during the period 1968-88 (except 1972). For 1972, the data are based on a 50 percent sample and weighted by a factor of 2. The population estimates on the CMF are based on U.S. Census Bureau estimates of the total U.S., State, and county resident populations.
<b>Comments</b>	
<b>Data on the Internet?</b>	NO



# **INTERNAL REVENUE SERVICE, STATISTICS OF INCOME DIVISION, INCOME DATA**

<b>Dataset</b>	<b>Individual Income Tax Returns, County Income Data</b>	
<b>Web Address (Info.)</b>	<a href="http://www.irs.ustreas.gov/prod/tax_stats/ind.html">http://www.irs.ustreas.gov/prod/tax_stats/ind.html</a>	
<b>Source of Data</b>	Internal Revenue Service, Statistics of Income Division	
<b>Variables</b>	Total money income, adjusted gross income, number of returns, and number of personal exemptions.	
<b>Time Period Coverage</b>	Varies. For each "release", that tax year is the period of time covered. For example, the 1996 data cover the 1996 tax year.	
<b>Geographic Detail</b>	Counties.	
<b>Years Available</b>	1997*	1996
<b>Data Format</b>	TBA	CD-ROM
<b>Cost</b>	TBA	\$50
<b>Ordering Information</b>	The Individual Income Tax Returns County Income Data can be ordered from the Statistical Information Services (SIS) Office by phone at (202) 874-0419; by FAX at (202) 874-0964; or by e-mail at <a href="mailto:sis@soi.irs.gov">sis@soi.irs.gov</a> .	
<b>Summary</b>	The Individual Income Tax Returns, County Income Data is based on the population of returns from the IRS Individual Master File system.	
<b>Comments</b>	*The 1997 County Income data are expected to be released in the summer of 1999.	
<b>Data on the Internet?</b>	NO	

<b>Dataset</b>	<b>Individual Income Tax Returns, County to County Migration Data</b>				
<b>Web Address (Info.)</b>	<a href="http://www.irs.ustreas.gov/prod/tax_stats/ind.html">http://www.irs.ustreas.gov/prod/tax_stats/ind.html</a>				
<b>Source of Data</b>	Internal Revenue Service, Statistics of Income Division				
<b>Variables</b>	Inflows, outflows, number of returns (can be used to approximate the number of households), number of personal exemptions (can be used to approximate the population), adjusted gross income, and adjusted median gross income.				
<b>Time Period Coverage</b>	Varies. For each "issue", two filing years are covered. For example, the 1996 to 1997 County to County Migration data cover the filing years 1996 and 1997.				
<b>Geographic Detail</b>	Counties.				
<b>Years Available</b>	1997 to 1998*	1996 to 1997	1995 to 1996	1994 to 1995	1993 to 1994
<b>Data Format</b>	TBA	CD-ROM	CD-ROM	CD-ROM	CD-ROM
<b>Cost</b>	TBA	\$250	\$100	\$100	\$100
<b>Ordering Information</b>	The Individual Income Tax Returns County to County Migration Data can be ordered from the Statistical Information Services (SIS) Office by phone at (202) 874-0419; by FAX at (202) 874-0964; or by e-mail at <a href="mailto:sis@soi.irs.gov">sis@soi.irs.gov</a> .				
<b>Summary</b>	The Individual Income Tax Returns, County to County Migration Data are based on the year-to-year changes in the addresses shown on the population of returns from the IRS Individual Master File system. These data present migration patterns by county for the entire United States.				
<b>Comments</b>	*The 1997 to 1998 County to County Migration Data are expected to be released in the summer of 1999.				
<b>Data on the Internet?</b>	NO				



# **BUREAU OF JUSTICE STATISTICS, CRIME DATA**




<b>Dataset</b>	<b>Index of Offense Crimes and Arrests, the 90 Largest Counties</b>
<b>Web Address (Info.)</b>	N/A
<b>Source of Data</b>	FBI Uniform Crime Reporting Program (see summary)
<b>Variables</b>	Number of arrests/offenses for/of: murder, rape, robbery, assault, burglary, larceny, motor vehicle theft, and arson.
<b>Time Period Coverage</b>	1990 to 1996
<b>Geographic Detail</b>	Counties.
<b>Years Available</b>	1990 to 1996
<b>Data Format</b>	Downloadable Spreadsheet
<b>Cost</b>	Free
<b>Ordering Information</b>	N/A
<b>Summary</b>	These data come from the Crime & Justice Electronic Data Abstracts which is a compilation of data put together by the Bureau of Justice Statistics. This particular spreadsheet presents estimates of crime and arrest data for the 90 largest counties. The data are based on reports provided to the FBI from each jurisdiction.
<b>Comments</b>	
<b>Data on the Internet?</b>	YES. These data can be viewed and/or downloaded from the web address(es) provided on page 93.

<b>Dataset</b>	<b>Selected Crime Data, 90 Most Populous Counties</b>
<b>Web Address (Info.)</b>	N/A
<b>Source of Data</b>	Bureau of Justice Statistics*
<b>Variables</b>	Variables include per capita income, race, median family income, percent below the poverty line, police strength, number of jail facilities, number of inmates, criminal justice expenditures, education, filings, trials, convictions, and guilty pleas.
<b>Time Period Coverage</b>	Varies. 1989, 1990, 1991, 1992, and 1993.
<b>Geographic Detail</b>	Counties.
<b>Years Available</b>	1989 to 1993
<b>Data Format</b>	Downloadable Spreadsheet
<b>Cost</b>	Free
<b>Ordering Information</b>	N/A
<b>Summary</b>	These data come from the Crime & Justice Electronic Data Abstracts, which is a compilation of data put together by the Bureau of Justice Statistics. This particular spreadsheet presents a variety of crime data for the 90 most populous counties.
<b>Comments</b>	*These data are compiled from the U.S. Census Bureau 1994 County and City Data Book, Bureau of Justice Statistics 1990 and 1993 Law Enforcement Management and Administrative Statistics, Bureau of the Justice Statistics 1993-1994 Jails and Jail Inmates, and the Bureau of Justice Statistics 1992 National Prosecutors Survey.
<b>Data on the Internet?</b>	YES. These data can be viewed and/or downloaded from the web address(es) provided on page 93.



# **BUREAU OF TRANSPORTATION STATISTICS, TRANSPORTATION DATA**

<b>Dataset</b>	<b>Census of Population and Housing, 1990: Census Transportation Planning Package</b>
<b>Web Address (Info.)</b>	<a href="http://depot.bts.gov/pdc/owa/btsprod.viewit?p_docid=BTS1069">http://depot.bts.gov/pdc/owa/btsprod.viewit?p_docid=BTS1069</a>
<b>Source of Data</b>	Bureau of Transportation Statistics*
<b>Variables</b>	Variables include departure time for work, arrival time at work, means of transportation, mean income, median income, occupation, industry, age, sex, race, Hispanic origin, etc.
<b>Time Period Coverage</b>	1990
<b>Geographic Detail</b>	States, counties, county subdivisions, and places of 2,500 or more. Totals are provided for UA's and State portions of MSA's, CMSA's, and PMSA's.
<b>Years Available</b>	1990
<b>Data Format</b>	CD-ROM
<b>Cost</b>	Free
<b>Ordering Information</b>	The Census of Transportation Planning Package CD-ROM can be ordered from the Bureau of Transportation Statistics' Customer Services department by phone at (202) 366-3282; by FAX at (202) 366-3640; by e-mail at <a href="mailto:orders@bts.gov">orders@bts.gov</a> ; or through the Internet at the Bureau of Transportation Statistics web site at <a href="http://depot.bts.gov/pdc/owa/btsprod.order_form">http://depot.bts.gov/pdc/owa/btsprod.order_form</a> .
<b>Summary</b>	The Census Transportation Planning Package (CTPP) is a set of special tabulations produced for the Department of Transportation in each state. The detailed cross-tabulations have been designed to meet the needs of state and local transportation planners, and are provided for counties, places of 2,500 or more inhabitants, and custom-defined Traffic Analysis Zones (TAZ's). The CTPP is a continuation of the 1970 and 1980 Urban Transportation Planning Package programs.
<b>Comments</b>	*The CTPP tabulations are prepared by the U.S. Census Bureau using 1990 Census of Population and Housing data.
<b>Data on the Internet?</b>	NO



# **USDA, NATIONAL AGRICULTURAL STATISTICS SERVICE, CROP AND LIVESTOCK DATA**

<b>Dataset</b>	<b>Crops County Data</b>
<b>Web Address (Info.)</b>	<a href="http://usda.mannlib.cornell.edu/data-sets/crops/9X100/">http://usda.mannlib.cornell.edu/data-sets/crops/9X100/</a>
<b>Source of Data</b>	United States Department of Agriculture, National Agricultural Statistics Service
<b>Variables</b>	Planted, seeded, and harvested acreage, yield per harvested acre, and total production.
<b>Time Period Coverage</b>	1972 to 1997
<b>Geographic Detail</b>	Counties.
<b>Years Available</b>	1972 to 1997
<b>Data Format</b>	Downloadable Compressed files
<b>Cost</b>	Free
<b>Ordering Information</b>	N/A
<b>Summary</b>	The Crops County Data present statistics on crops, crop land, and crop production.
<b>Comments</b>	
<b>Data on the Internet?</b>	YES. These data can be viewed and/or downloaded from the web address(es) provided on page 94.

<b>Dataset</b>	<b>Livestock County Data</b>
<b>Web Address (Info.)</b>	<a href="http://jan.mannlib.cornell.edu/data-sets/livestock/93105/">http://jan.mannlib.cornell.edu/data-sets/livestock/93105/</a>
<b>Source of Data</b>	United States Department of Agriculture, National Agricultural Statistics Service
<b>Variables</b>	Head (head count of each animal species) and Pounds (when applicable, refers to products, such as pounds of eggs).
<b>Time Period Coverage</b>	Varies by livestock species. 1975 to 1998 (Cattle and Sheep) 1974 to 1997 (Hogs and Poultry)
<b>Geographic Detail</b>	Counties.
<b>Years Available</b>	1974 to 1998
<b>Data Format</b>	Downloadable ZIP Files
<b>Cost</b>	Free
<b>Ordering Information</b>	N/A
<b>Summary</b>	The livestock county data provide basic counts and measures of livestock species and products.
<b>Comments</b>	
<b>Data on the Internet?</b>	YES. These data can be viewed and/or downloaded from the web address(es) provided on page 94.



# **NATIONAL CENTER FOR EDUCATION STATISTICS, EDUCATION DATA**



<b>Dataset</b>	<b>The School District Data Book</b>
<b>Web Address (Info.)</b>	<a href="http://nces.ed.gov/surveys/SDDDB/introd.htm">http://nces.ed.gov/surveys/SDDDB/introd.htm</a>
<b>Source of Data</b>	National Center for Education Statistics (see summary)
<b>Variables</b>	Variables include age, sex, race, ethnicity, poverty status, urban/rural status, expenditures, revenues, educational attainment, labor force status, number of students by each grade, number of students broken down into minority groups, number of teachers for specific grade levels, dropouts, etc.
<b>Time Period Coverage</b>	Varies for each data item depending on its source. Data are included from the 1990 Census, the 1989-1990 National Center for Education's Common Core of Data (CCD), and the 1989-1990 Census Bureau Survey of Local Government Finances.
<b>Geographic Detail</b>	U.S., States, counties, and school districts.
<b>Years Available</b>	1989 to 1990
<b>Data Format</b>	44 Demographic CD-ROM's* 1 Analytic Spreadsheets CD-ROM 7 Cartographic CD-ROM's*
<b>Cost</b>	If supplies are not exhausted, a single copy of a publication or CD-ROM may be obtained at no cost from the Education Publications Center (ED Pubs). If supplies are exhausted at ED Pubs, products may be purchased through the Government Printing Office (GPO).
<b>Ordering Information</b>	The various CD-ROM's which make up the School District Data Book are available from the Education Publications Center (ED Pubs), the Government Printing Office (GPO), and Federal Depository Libraries. Orders can be made through ED Pubs by calling (877) 433-7827 (toll free); by FAX at (301) 470-1244; or by e-mail at <a href="mailto:EdPubs@inet.ed.gov">EdPubs@inet.ed.gov</a> . Orders can be made through GPO by calling (202) 512-1800; by FAX at (202) 512-2250 (Credit Card orders only); or through the Internet at <a href="http://www.access.gpo.gov/su_docs/sale/prf/prf.html">http://www.access.gpo.gov/su_docs/sale/prf/prf.html</a> .
<b>Summary</b>	The School District Data Book provides a wealth of information on the social and economic characteristics of school-age children, their households, and the nation's school systems. Up to 200,000 data items are available for each school district. The data items are compiled from the 1990 Census, the 1989-1990 National Center for Education's Common Core of Data (CCD), and the 1989-1990 Census Bureau Survey of Local Government Finances.
<b>Comments</b>	*CD-ROM's are sold both as a package and separately. Due to the volume and complex organization of this dataset, potential data users may want to read the information provided on the web site listed above before ordering.
<b>Data on the Internet?</b>	YES. These data can be viewed and/or downloaded from the web address(es) provided on page 95.



## **PART II: DATASETS AVAILABLE ON THE INTERNET**

# 1990 CENSUS OF POPULATION AND HOUSING DATA

<b>Dataset</b>	<b>1990 Census Summary Tape Files: 1A, 1C, 3A, 3B, and 3C</b>
<b>Site</b>	U.S. Census Bureau - Census Lookup
<b>Web Address (Data)</b>	<a href="http://venus.census.gov/cdrom/lookup">http://venus.census.gov/cdrom/lookup</a>
<b>Years Available</b>	1990
<b>Data Format</b>	Viewable through browser; Downloadable in tab-delimited and CODATA format.
<b>Comments</b>	Census Lookup provides access to basic demographic variables from the 1990 Census Summary Tape Files 1A and 1C and all socioeconomic and demographic variables from the 1990 Census Summary Tape Files 3A, B, and C. Queries are submitted based on which geographic areas and variables are selected.

<b>Dataset</b>	<b>1990 Census Summary Tape Files 1 and 3</b>
<b>Site</b>	Government Information Sharing Project
<b>Web Address (Data)</b>	<a href="http://govinfo.kerr.orst.edu/stateis.html">http://govinfo.kerr.orst.edu/stateis.html</a>
<b>Years Available</b>	1990
<b>Data Format</b>	Viewable through browser
<b>Comments</b>	Queries are submitted based on which geographic areas are selected. Results are broken down into the following tables: summary, housing, income, social, and labor.

<b>Dataset</b>	<b>1990 Census Summary Tape Files 1 and 3 1990 Census Subject Summary Tape File 3 and 5</b>
<b>Site</b>	University of California, Berkeley - Social Science & Government Data Library
<b>Web Address (Data)</b>	<a href="http://sunsite.berkeley.edu/GovData/info/">http://sunsite.berkeley.edu/GovData/info/</a>
<b>Years Available</b>	1990
<b>Data Format</b>	Viewable through browser; Downloadable in tab-delimited format and CODATA format.
<b>Comments</b>	This site also provides access to data from the 1990 Census Summary Subject Tape File 2 on ancestry in the U.S. Queries are submitted based on which geographic areas and variables are selected.

# 1990 CENSUS OF POPULATION AND HOUSING DATA

<b>Dataset</b>	<b>1990 Census Summary Tape Files 1A and 3A</b>
<b>Site</b>	U.S. Census Bureau - Map Stats
<b>Web Address (Data)</b>	<a href="http://www.census.gov/datamap/www/index.html">http://www.census.gov/datamap/www/index.html</a>
<b>Years Available</b>	1990
<b>Data Format</b>	Viewable through browser; Downloadable in tab-delimited and CODATA format.
<b>Comments</b>	Queries are submitted based on which geographic areas and variables are selected.

<b>Dataset</b>	<b>1990 Census Summary Tape File 3</b>
<b>Site</b>	Missouri State Census Data Center - Basic Tables and Trends Reports from the 1990 Census
<b>Web Address (Data)</b>	<a href="http://www.oseda.missouri.edu/usinfo.html">http://www.oseda.missouri.edu/usinfo.html</a>
<b>Years Available</b>	1990 (some 1980 data)
<b>Data Format</b>	Viewable through browser
<b>Comments</b>	Queries are based on which geographic areas are chosen. This site also provides access to reports on basic demographic changes from the 1980 Census to the 1990 Census. Results in the trend reports include absolute numbers as well as the percent change.

<b>Dataset</b>	<b>1990 Census Equal Employment Opportunity File</b>
<b>Site</b>	Government Information Sharing Project
<b>Web Address (Data)</b>	<a href="http://govinfo.kerr.orst.edu/eeo-stateis.html">http://govinfo.kerr.orst.edu/eeo-stateis.html</a>
<b>Years Available</b>	1990
<b>Data Format</b>	Viewable through browser
<b>Comments</b>	Queries are submitted based on which geographic areas and occupations are selected.

## ESTIMATES AND PROJECTIONS DATA

<b>Dataset</b>	<b>Population Estimates by Age, Sex, Race, and Hispanic Origin: 1990 to 1997</b>
<b>Site</b>	Government Information Sharing Project
<b>Web Address (Data)</b>	<a href="http://govinfo.kerr.orst.edu/pe-stateis.html">http://govinfo.kerr.orst.edu/pe-stateis.html</a>
<b>Years Available</b>	1990 to 1997
<b>Data Format</b>	Viewable through browser
<b>Comments</b>	This site provides access to National, State, and county population estimates from the U.S. Census Bureau. Queries are submitted based on which geographic areas and reports are selected. A summary report and a race-ethnicity report are available.

<b>Dataset</b>	<b>Population Estimates by Age, Sex, Race, and Hispanic Origin: 1990 to 1997</b>
<b>Site</b>	U.S. Census Bureau - Population Estimates
<b>Web Address (Data)</b>	<a href="http://www.census.gov/population/www/estimates/popest.html">http://www.census.gov/population/www/estimates/popest.html</a>
<b>Years Available</b>	Varies by Geographic level between 1980 and 1997
<b>Data Format</b>	Viewable through browser; Downloadable
<b>Comments</b>	This site provides access to National, State, county, place and county subdivision, metropolitan area, and Puerto Rico Municipio population estimates for different periods of time spanning from 1980 to 1998.

<b>Dataset</b>	<b>County Population Estimates</b>
<b>Site</b>	U.S. Census Bureau - Map Stats
<b>Web Address (Data)</b>	<a href="http://www.census.gov/datamap/www/index.html">http://www.census.gov/datamap/www/index.html</a>
<b>Years Available</b>	1998
<b>Data Format</b>	Viewable through browser
<b>Comments</b>	This site provides access to 1998 county population estimates.

## ESTIMATES AND PROJECTIONS DATA

<b>Dataset</b>	<b>Small Area Income and Poverty Estimates</b>
<b>Site</b>	U.S. Census Bureau - Map Stats
<b>Web Address (Data)</b>	<a href="http://www.census.gov/datamap/www/index.html">http://www.census.gov/datamap/www/index.html</a>
<b>Years Available</b>	1995
<b>Data Format</b>	Viewable through browser
<b>Comments</b>	This site provides access to 1995 model-based income and poverty estimates.

<b>Dataset</b>	<b>Small Area Income and Poverty Estimates</b>
<b>Site</b>	U.S. Census Bureau - Small Area Income and Poverty Estimates
<b>Web Address (Data)</b>	<a href="http://www.census.gov/hhes/www/saipe.html">http://www.census.gov/hhes/www/saipe.html</a>
<b>Years Available</b>	1993 and 1995
<b>Data Format</b>	Downloadable
<b>Comments</b>	This site provides access to the small area income and poverty estimates from the U.S. Census Bureau.

<b>Dataset</b>	<b>Population Projections by Age, Sex, Race and Hispanic Origin: 1995 to 2025</b>
<b>Site</b>	U.S. Census Bureau - Population Projections
<b>Web Address (Data)</b>	<a href="http://www.census.gov/population/www/projections/popproj.html">http://www.census.gov/population/www/projections/popproj.html</a>
<b>Years Available</b>	1995 to 2025
<b>Data Format</b>	Viewable through browser; Downloadable
<b>Comments</b>	This site provides access to State population projections, projections of the population by household type, and projections of the voting-age population.

## ECONOMIC CENSUS DATA

<b>Dataset</b>	<b>1992 Economic Census</b>
<b>Site</b>	Government Information Sharing Project
<b>Web Address (Data)</b>	<a href="http://govinfo.kerr.orst.edu/econ-stateis.html">http://govinfo.kerr.orst.edu/econ-stateis.html</a>
<b>Years Available</b>	1992
<b>Data Format</b>	Viewable through browser
<b>Comments</b>	This site provides access to data from the following 1992 Economic Census CD-ROM's: Report Series, Nonemployer Statistics Series, and the Zip Code Statistics Series. Queries are submitted based on which geographic areas and reports are selected. Reports are available for various industries and for the Survey of Minority- and Women-Owned Businesses.

<b>Dataset</b>	<b>1992 Economic Census</b>
<b>Site</b>	U.S. Census Bureau - Map Stats
<b>Web Address (Data)</b>	<a href="http://www.census.gov/datamap/www/index.html">http://www.census.gov/datamap/www/index.html</a>
<b>Years Available</b>	1992
<b>Data Format</b>	Viewable through browser
<b>Comments</b>	Data are available at the State, county, and congressional district level. An area profile is generated according to which geographic area is selected. Nonemployer statistics are not available at this site.

<b>Dataset</b>	<b>1992 Economic Census</b>
<b>Site</b>	U.S. Census Bureau - Economic Census
<b>Web Address (Data)</b>	<a href="http://www.census.gov/econ/www/econ_cen.html">http://www.census.gov/econ/www/econ_cen.html</a>
<b>Years Available</b>	1992
<b>Data Format</b>	Viewable through browser
<b>Comments</b>	This site provides access to National Statistics by SIC (HTML tables) and State and County Profiles (ASCII format) from the 1992 Economic Census. Nonemployer statistics are not available at this site.

## CENSUS OF AGRICULTURE DATA

<b>Dataset</b>	<b>Census of Agriculture</b>		
<b>Site</b>	Government Information Sharing Project		
<b>Web Address (Data)</b>	<a href="http://govinfo.kerr.orst.edu/ag-stateis.html">http://govinfo.kerr.orst.edu/ag-stateis.html</a>		
<b>Years Available</b>	1992	1987	1982
<b>Data Format</b>	Viewable through browser	Viewable through browser	Viewable through browser
<b>Comments</b>	Queries are submitted based on which geographic areas and reports are selected.		

<b>Dataset</b>	<b>Census of Agriculture</b>		
<b>Site</b>	National Agricultural Statistics Service - Census of Agriculture		
<b>Web Address (Data)</b>	<a href="http://www.nass.usda.gov/census/">http://www.nass.usda.gov/census/</a>		
<b>Years Available</b>	1997		
<b>Data Format</b>	Viewable Tables		
<b>Comments</b>	This site provides links to National, State, and county tables, graphics, and profiles from the 1997 Census of Agriculture.		



## COUNTY-LEVEL DATA COMPILATIONS

<b>Dataset</b>	<b>County and City Data Book</b>	
<b>Site</b>	University of Virginia Geospatial and Statistical Data Center	
<b>Web Address (Data)</b>	<a href="http://fisher.lib.virginia.edu/ccdb/">http://fisher.lib.virginia.edu/ccdb/</a>	
<b>Years Available</b>	1994	1988
<b>Data Format</b>	Viewable through browser and in table format; Downloadable	Viewable through browser and in table format; Downloadable
<b>Comments</b>	Queries are submitted based on which geographic areas and variables are chosen.	

<b>Dataset</b>	<b>County Business Patterns</b>	
<b>Site</b>	University of Virginia Geospatial and Statistical Data Center	
<b>Web Address (Data)</b>	<a href="http://www.lib.virginia.edu/socsci/cbp/cbp.html">http://www.lib.virginia.edu/socsci/cbp/cbp.html</a>	
<b>Years Available</b>	1977 to 1995	
<b>Data Format</b>	Viewable through browser; Downloadable	
<b>Comments</b>	Queries are submitted based on which geographic areas, industry, years, and variables are selected.	

<b>Dataset</b>	<b>County Business Patterns</b>	
<b>Site</b>	U.S. Census Bureau - County Business Patterns	
<b>Web Address (Data)</b>	<a href="http://www.census.gov/epcd/cbp/view/cbpview.html">http://www.census.gov/epcd/cbp/view/cbpview.html</a>	
<b>Years Available</b>	1993 to 1996	
<b>Data Format</b>	Viewable through browser; Downloadable	
<b>Comments</b>	Queries are based on which geographic areas, years, and reports are chosen.	

## COUNTY-LEVEL DATA COMPILATIONS

---

<b>Dataset</b>	<b>USA Counties</b>
<b>Site</b>	Government Information Sharing Project
<b>Web Address (Data)</b>	<a href="http://govinfo.kerr.orst.edu/usaco-stateis.html">http://govinfo.kerr.orst.edu/usaco-stateis.html</a>
<b>Years Available</b>	1996
<b>Data Format</b>	Viewable through browser
<b>Comments</b>	Queries are submitted based on which geographic areas and variables are selected.

## GOVERNMENT DATA

---

<b>Dataset</b>	<b>Consolidated Federal Funds Report</b>
<b>Site</b>	U.S. Census Bureau - Consolidated Federal Funds Report
<b>Web Address (Data)</b>	<a href="http://www.census.gov/govs/www/cffr.html">http://www.census.gov/govs/www/cffr.html</a>
<b>Years Available</b>	1994 to 1998
<b>Data Format</b>	Viewable Files in Table Format; Downloadable
<b>Comments</b>	This site provides access to 1994-1998 data from the Consolidated Federal Funds Report.

<b>Dataset</b>	<b>Consolidated Federal Funds Report</b>
<b>Site</b>	Government Information Sharing Project
<b>Web Address (Data)</b>	<a href="http://govinfo.kerr.orst.edu/cffr-stateis.html">http://govinfo.kerr.orst.edu/cffr-stateis.html</a>
<b>Years Available</b>	1987 to 1996
<b>Data Format</b>	Viewable through browser
<b>Comments</b>	Queries are based on which geographic areas and reports are chosen. There is a summary report and a detailed report.

## BUREAU OF ECONOMIC ANALYSIS, REGIONAL ACCOUNTS DATA

<b>Dataset</b>	<b>Wage and Salary Disbursements, Wage and Salary Employment, and Average Wage per Job (CA-34)</b> <b>Personal Income and Per Capita Personal Income (CA1-3)</b>
<b>Site</b>	Government Information Sharing Project
<b>Web Address (Data)</b>	<a href="http://govinfo.kerr.orst.edu/reis-stateis.html">http://govinfo.kerr.orst.edu/reis-stateis.html</a>
<b>Years Available</b>	1969 to 1997
<b>Data Format</b>	Viewable through browser
<b>Comments</b>	This site provides access to the Regional Economic Information System, which contains Wage and Salary Disbursements, Wage and Salary Employment, and Average Wage per Job (CA-34) and Personal Income and Per Capital Personal Income (CA1-3) data. Queries are based on which reports are selected.

<b>Dataset</b>	<b>Wage and Salary Disbursements, Wage and Salary Employment, and Average Wage per Job (CA-34)</b> <b>Personal Income and Per Capita Personal Income (CA1-3)</b>
<b>Site</b>	University of Virginia Geospatial and Statistical Data Center
<b>Web Address (Data)</b>	<a href="http://fisher.lib.virginia.edu/reis/">http://fisher.lib.virginia.edu/reis/</a>
<b>Years Available</b>	1969 to 1996
<b>Data Format</b>	Viewable through browser; Downloadable
<b>Comments</b>	This site provides access to data from the Regional Economic Information System, which contains Wage and Salary Disbursements, Wage and Salary Employment, and Average Wage per Job (CA-34) and Personal Income and Per Capital Personal Income (CA1-3) data. Queries are submitted based on which geographic areas, variables, and years are chosen.

## BUREAU OF ECONOMIC ANALYSIS, REGIONAL ACCOUNTS DATA

<b>Dataset</b>	<b>Wage and Salary Disbursements, Wage and Salary Employment, and Average Wage per Job by County and Metropolitan Area, CA-34</b>
<b>Site</b>	Bureau of Economic Analysis - Regional Accounts Data
<b>Web Address (Data)</b>	<a href="http://www.bea.doc.gov/bea/regional/reis/ca34/index.htm">http://www.bea.doc.gov/bea/regional/reis/ca34/index.htm</a>
<b>Years Available</b>	1969 to 1997 (Compressed File) 1994 to 1997 (HTML tables)
<b>Data Format</b>	Downloadable Compressed File and Viewable HTML Tables
<b>Comments</b>	This site provides access to wage, salary, and employment data from the Bureau of Economic Analysis.

<b>Dataset</b>	<b>Personal Income by County and Metropolitan Area, CA1-3</b>
<b>Site</b>	Bureau of Economic Analysis - Regional Accounts Data
<b>Web Address (Data)</b>	<a href="http://www.bea.doc.gov/bea/regional/reis/ca1_3.htm">http://www.bea.doc.gov/bea/regional/reis/ca1_3.htm</a>
<b>Years Available</b>	1969 to 1996
<b>Data Format</b>	Downloadable Compressed File
<b>Comments</b>	This site provides access to county personal income, per capital personal income, and population data from the Bureau of Economic Analysis.

## BUREAU OF LABOR STATISTICS, EMPLOYMENT AND UNEMPLOYMENT STATISTICS

---

<b>Dataset</b>	<b>Employment and Average Pay for Large Counties</b>
<b>Site</b>	Bureau of Labor Statistics - Employment and Average Pay for Large Counties
<b>Web Address (Data)</b>	<a href="http://stats.bls.gov/news.release/eaapc.toc.htm">http://stats.bls.gov/news.release/eaapc.toc.htm</a>
<b>Years Available</b>	1996
<b>Data Format</b>	Viewable through browser
<b>Comments</b>	This site includes a summary report, technical notes on the data, a text version of the news release on the data, and two tables showing the data itself and the county rankings of employment and average annual pay.

<b>Dataset</b>	<b>Local Area Unemployment Statistics</b>
<b>Site</b>	Bureau of Labor Statistics - Employment and Unemployment
<b>Web Address (Data)</b>	<a href="http://stats.bls.gov/sahome.html">http://stats.bls.gov/sahome.html</a>
<b>Years Available</b>	1978 to 1999
<b>Data Format</b>	Downloadable Files and Viewable HTML Tables
<b>Comments</b>	Queries for the unemployment statistics are based on which variables and years are selected.

## BUREAU OF JUSTICE STATISTICS, CRIME DATA

---

<b>Dataset</b>	<b>Index of Offense Crimes and Arrests, the 90 Largest Counties</b>
<b>Site</b>	Bureau of Justice Statistics - Crime & Justice Electronic Data Abstracts
<b>Web Address (Data)</b>	<a href="http://www.ojp.usdoj.gov/bjs/dtdata.htm">http://www.ojp.usdoj.gov/bjs/dtdata.htm</a>
<b>Years Available</b>	1990 to 1996
<b>Data Format</b>	Downloadable Spreadsheet
<b>Comments</b>	This site provides access to the Index of Offense Crimes and Arrests Data for the 90 Largest Counties from the Bureau of Justice Statistics.

<b>Dataset</b>	<b>Selected Crime Data, 90 Most Populous Counties</b>
<b>Site</b>	Bureau of Justice Statistics - Crime & Justice Electronic Data Abstracts
<b>Web Address (Data)</b>	<a href="http://www.ojp.usdoj.gov/bjs/dtdata.htm">http://www.ojp.usdoj.gov/bjs/dtdata.htm</a>
<b>Years Available</b>	Varies. 1989, 1990, 1991, 1992, and 1993.
<b>Data Format</b>	Downloadable Spreadsheet
<b>Comments</b>	This site provides access to Selected Crime Data for the 90 Most Populous Counties from the Bureau of Justice Statistics.

# USDA, NATIONAL AGRICULTURAL STATISTICS SERVICE, CROP AND LIVESTOCK DATA

---

<b>Dataset</b>	<b>Crops County Data</b>
<b>Site</b>	National Agricultural Statistics Historic Data
<b>Web Address (Data)</b>	<a href="http://usda.mannlib.cornell.edu/data-sets/crops/9X100/">http://usda.mannlib.cornell.edu/data-sets/crops/9X100/</a>
<b>Years Available</b>	1972 to 1998
<b>Data Format</b>	Downloadable
<b>Comments</b>	This site provides access to the National Agricultural Statistics Service's county crop data.

<b>Dataset</b>	<b>Crops County Data Livestock County Data</b>
<b>Site</b>	Mann Library Cornell University - USDA Economics and Statistics System
<b>Web Address (Data)</b>	<a href="http://jan.mannlib.cornell.edu/data-sets/livestock/93105/">http://jan.mannlib.cornell.edu/data-sets/livestock/93105/</a>
<b>Years Available</b>	Varies by livestock species. 1975 to 1998 (Cattle and Sheep) 1974 to 1997 (Hogs and Poultry)
<b>Data Format</b>	Downloadable
<b>Comments</b>	This site provides access to the National Agricultural Statistics Service's county livestock data.



## NATIONAL CENTER FOR EDUCATION STATISTICS, EDUCATION DATA

---

<b>Dataset</b>	<b>The School District Data Book</b>
<b>Site</b>	Government Information Sharing Project
<b>Web Address (Data)</b>	<a href="http://govinfo.kerr.orst.edu/sddb-stateis.html">http://govinfo.kerr.orst.edu/sddb-stateis.html</a>
<b>Years Available</b>	1989 to 1990
<b>Data Format</b>	Viewable through browser
<b>Comments</b>	Queries are submitted based on which geographic areas and reports are selected.

## List of Acronyms

---

The following is a list of acronyms used in the data inventory:

BLS	Bureau of Labor Statistics
BNA	Block Numbering Area
CCD	Census Civil Division
CCD	Common Core of Data
CFFR	Consolidated Federal Funds Report
CMF	Compressed Mortality File
CMSA	Consolidated Metropolitan Statistical Area
CPS	Current Population Survey
CTPP	Census Transportation Planning Package
ED Pubs	Education Publications Center
EEO	Equal Employment Opportunity
EIN	Employer Identification Number
FBI	Federal Bureau of Investigation
FIPS	Federal Information Processing Standard
GPO	Government Printing Office
ICD	International Classification of Diseases
IRS	Internal Revenue Service
MA	Metropolitan Area
MCD	Minor Civil Division
MSA	Metropolitan Statistical Area
NASS	National Agricultural Statistics Service
NCHS	National Center for Health Statistics
NTIS	National Technical Information Service
PMSA	Primary Metropolitan Statistical Area
REIS	Regional Economic Information System
SCSA	Standard Consolidated Statistical Area
SESA	State Employment Security Agencies
SIC	Standard Industrial Classifications
SIS	Statistical Information Services
SMOBE	Survey of Minority-Owned Business Enterprises
SMSA	Standard Metropolitan Statistics Area
SSTF	Subject Summary Tape File
STF	Summary Tape File
SWOBE	Survey of Women-Owned Business Enterprises
TAZ	Traffic Analysis Zone
UA	Urbanized Area
UCFE	Unemployment Compensation for Federal Employees
UI	Unemployment Insurance
USDA	United States Department of Agriculture

## Other Useful Internet Sites

---

### Federal Sites

- Bureau of Economic Analysis <http://www.bea.doc.gov/>
- Bureau of Justice Statistics <http://www.ojp.usdoj.gov/bjs/>
- Bureau of Labor Statistics <http://stats.bls.gov/>
- Bureau of Transportation Statistics <http://www.bts.gov/>
- Census Bureau <http://www.census.gov/>
- Government Printing Office [http://www.access.gpo.gov/su\\_docs/aces/aaces002.html](http://www.access.gpo.gov/su_docs/aces/aaces002.html)
- Internal Revenue Service [http://www.irs.ustreas.gov/prod/tax\\_stats/index.html](http://www.irs.ustreas.gov/prod/tax_stats/index.html)
- National Agricultural Statistics Service <http://www.usda.gov/nass/>
- National Center for Educational Statistics <http://nces.ed.gov/>
- National Center for Health Statistics <http://www.cdc.gov/nchswww/default.htm>
- White House Economic Statistics Briefing Room <http://www.whitehouse.gov/fsbr/esbr.html>
- White House Social Statistics Briefing Room <http://www.whitehouse.gov/fsbr/demography.html>

### General Statistical Information Sites

- FEDSTATS <http://www.fedstats.gov/>
- Starting the Hunt: Guide to Data <http://www.cast.uark.edu/local/hunt/>
- STAT-USA <http://www.stat-usa.gov/>

### University Sites

- California State University Northridge Library Finding Federal Statistics <http://library.csun.edu/mfinley/stathtml.html>
- The Michigan Electronic Library <http://mel.lib.mi.us/reference/REF-population.html>
- Government Information Sharing Project – Oregon State University <http://govinfo.kerr.orst.edu/>
- University of California, Berkeley Social Science & Government Data Library <http://sunsite.berkeley.edu/GovData/info/>
- University of Illinois at Urbana-Champaign Documents Library <http://www.library.uiuc.edu/doc/stats.htm>
- University of Virginia: Geospatial & Statistical Data Center <http://fisher.lib.virginia.edu/right.html>

### Minority and Small Business Data

- Minority Business Development Agency <http://www.mbda.gov/>
- Small Business Administration <http://www.sba.gov/>
- IRS Small Business Corner [http://www.irs.ustreas.gov/prod/bus\\_info/sm\\_bus/index.html](http://www.irs.ustreas.gov/prod/bus_info/sm_bus/index.html)
- Minority Business Yellow Pages <http://www.minoritybusiness.com/homepage.htm>
- Minority Business Network <http://www.mbglobal.com/>

\*These web addresses are current as of April 1999 and are subject to change.

# List of Contacts

<b>Dataset</b>	<b>Contact Name/Unit, Agency</b>	<b>Phone number</b>
Census of Population and Housing	Statistical Information Staff, U.S. Census Bureau	(301) 457-2422
Population Estimates	Statistical Information Staff, U.S. Census Bureau	(301) 457-2422
Population Projections	Statistical Information Staff, U.S. Census Bureau	(301) 457-2422
Census of Retail Trade	Service Sector Statistics Division, U.S. Census Bureau	(301) 457-2700
Census of Wholesale Trade	Service Sector Statistics Division, U.S. Census Bureau	(301) 457-2725
Census of Service Industries	Service Sector Statistics Division, U.S. Census Bureau	(301) 457-2724
Census of Manufactures	Manufacturing and Construction Division, U.S. Census Bureau	(301) 457-4755
Census of Mineral Industries	Manufacturing and Construction Division, U.S. Census Bureau	(301) 457-4680
Survey of Minority-Owned Business Enterprises	Company Statistics Division, U.S. Census Bureau	(301) 457-3316
Survey of Women-Owned Business Enterprises	Company Statistics Division, U.S. Census Bureau	(301) 457-3316
Nonemployer Statistics	(contact any of the above for questions relating to Nonemployer Statistics for each sector included in the Economic Census)	
Census of Agriculture	National Agricultural Statistics Service, U.S. Department of Agriculture	1-800-523-3215
County and City Data Book	Statistical Compendia Branch, U.S. Census Bureau	(301) 457-1166
USA Counties	Statistical Compendia Branch, U.S. Census Bureau	(301) 457-1166
County Business Patterns	Register Analysis Branch, U.S. Census Bureau	(301) 457-2580
CountyScope	Electronic Product Development Branch, U.S. Census Bureau	(301) 457-1326
Consolidated Federal Funds Report	Governments Division, U.S. Census Bureau	(301) 457-1522
Census of Governments	Governments Division, U.S. Census Bureau	(301) 457-1486
CA-34 and CA1-3	Regional Economic Information System Staff, Bureau of Economic Analysis	(202) 606-5360
Employment and Average Annual Pay for Large Counties	Covered Employment and Wages Program, Bureau of Labor Statistics	(202) 606-6567
Local Area Unemployment Statistics	Local Area Unemployment Statistics Program, Bureau of Labor Statistics	(202) 606-6392
Natality Data	Kenneth Keppel and Stephanie Ventura, Reproductive Statistics Branch, National Center for Health Statistics	(301) 436-8954
Mortality Data	National Center for Health Statistics	(301) 436-8500
Individual Income Tax Returns, County Income Data	Jim Willis, Statistics of Income Division, Internal Revenue Service	(202) 874-0277
Individual Income Tax Returns, County to County Migration Data	Jim Willis, Statistics of Income Division, Internal Revenue Service	(202) 874-0277
Index of Offense Crimes and Arrests	Bureau of Justice Statistics	(202) 307-0765
Selected Crime Data	Bureau of Justice Statistics	(202) 307-0765
Census Transportation Planning Package	Journey to Work and Migration Statistics Branch, U.S. Census Bureau	(301) 457-2454
Crops County Data	Jim Brueggen, National Agricultural Statistics Service	(202) 720-4889
Livestock County Data	Jim Brueggen, National Agricultural Statistics Service	(202) 720-4889
The School District Data Book	Tai Phan, National Center for Education Statistics	(202) 219-1622