

**FOR INFORMATION**

FOREST SUPERVISOR'S OFFICE  
1935 3rd Ave East  
Kalispell, MT 59901  
(406) 758-5200

SWAN LAKE DISTRICT OFFICE  
200 Ranger Station Rd.  
Bigfork, MT 59911  
(406) 837-7500

HUNGRY HORSE/GLACIER VIEW &  
SPOTTED BEAR DISTRICT OFFICE  
8975 Hwy. 2 East  
Hungry Horse, MT 59919  
(406) 387 - 3800

**Swan Lake, Spotted Bear &  
Hungry Horse Districts  
Flathead National Forest**

**OVER SNOW  
MOTOR VEHICLE  
USE MAP**

Prepared March 2007



**IT IS UNLAWFUL TO OPERATE OVER SNOW VEHICLES ON PLOWED ROADS OR ANY ROAD DRIVEABLE BY CONVENTIONAL MOTORIZED VEHICLES, REGARDLESS OF THE TRAVEL DESIGNATION DISPLAYED ON THIS MAP.**

PORTION OF BOND CREEK TRAIL OPEN TO ALLOW CROSSING OF OVER SNOW VEHICLES.

This map displays Over Snow Motor Vehicle access compiled from the Flathead National Forest Winter Motorized Recreation Plan.

Due to the continuing Travel Implementation process, some changes in restrictions on roads or areas shown can be expected. For more information contact Hungry Horse, Spotted Bear or Swan Lake District Offices.

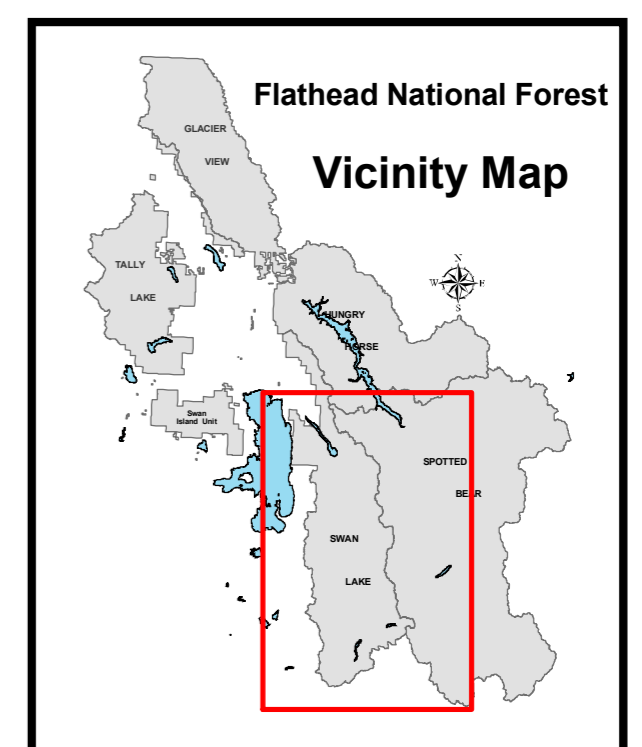
No motorized use is permitted within the Great Bear, Bob Marshall, Mission Mountains Wilderness Areas or the Jewel Basin Hiking Area. Unless otherwise shown, roads within restricted areas have the same restrictions as the areas. Over snow motor vehicles are not permitted on plowed roads. Violators of regulations are subject to a fine of not more than FIVE THOUSAND DOLLARS (\$5000.00) or imprisonment for not more than SIX (6) months or both (18 USC 3571).

Prohibitions: It is prohibited to possess or operate an Over Snow Motor Vehicle on the Flathead National Forest other than in accordance with these designations (CFR 261.14), as per the Flathead Over Snow Motor Vehicle Use Maps dated March 2007.

**MOTORIZED WINTER RECREATION RESTRICTIONS**

**ALL TRAVEL INFORMATION ON THIS MAP PERTAINS TO OVER SNOW MOTOR VEHICLE USE ONLY**

- FOREST SERVICE - OPEN TO OVER SNOW MOTOR VEHICLE ACCESS DEC 1 - MARCH 31
- LOST JOHNNY - AREA OPEN DEC 1 - MAY 31
- SIX MILE - AREA OPEN DEC 1 - APRIL 30
- AREA RESTRICTED YEARLONG
- WILDERNESS - RESTRICTED YEARLONG
- ROAD OPEN - CONDITIONS PERMITTING
- ROAD TEMPLATE (OPEN DEC 1 - MARCH 31 ON NATIONAL FOREST SYSTEM LANDS)
- ROAD RESTRICTED YEARLONG
- ROAD RESTRICTED APRIL 1 - JUNE 30
- ROAD OPEN DEC 1 - OCT 14
- TRAIL RESTRICTED YEARLONG
- GROOMED TRAIL OPEN TO OVER SNOW MOTOR VEHICLE ACCESS DEC 1 - MARCH 31
- GROOMED TRAIL - ROAD OPEN
- PARKING AREA
- FOREST SERVICE OFFICE
- OWNERSHIP**
- PRIVATE
- STATE



**IT IS RECOGNIZED THAT THERE ARE INHERENT RISKS TO THE SPORT OF SNOWMOBILING AND THE PRUDENT SNOWMOBILER SHOULD BE AWARE OF SUCH RISKS AND TAKE NECESSARY PRECAUTIONS.**

RESTRICTION DOES NOT APPLY TO OVER SNOW MOTOR VEHICLES ON LINDBERGH LAKE OR WITHIN 100 FEET OF SHORELINE