

Hungry Horse, Spotted Bear & North Swan Lake Districts
Flathead National Forest

OVER SNOW MOTOR VEHICLE USE MAP

Prepared March 2007



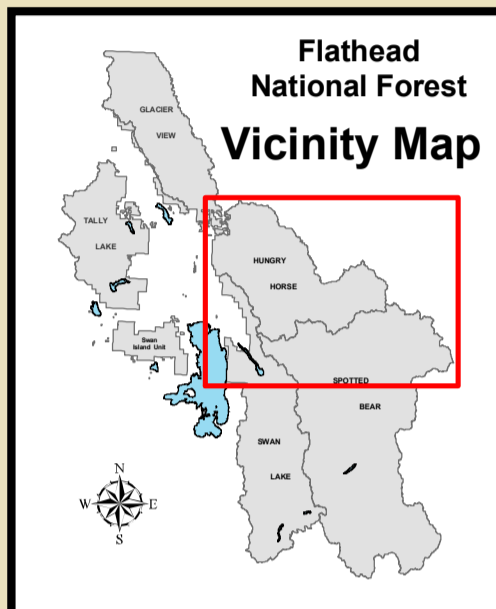
This map displays Over Snow Motor Vehicle access compiled from the Flathead National Forest Winter Motorized Recreation Plan.

Due to the continuing Travel Implementation process, some changes in restrictions on roads or areas shown can be expected. For more information contact Glacier View, Hungry Horse, Spotted Bear or Swan Lake District Offices.

Please remain on the groomed trails or designated routes within the Coram Experimental Forest. This request is for the protection for forest resource experiment plots.

No motorized use is permitted within the Great Bear, Bob Marshall, Mission Mountains Wilderness Areas or the Jewel Basin Hiking Area. Unless otherwise shown, roads within restricted areas have the same restrictions as the areas. Over snow motor vehicles are not permitted on plowed roads. Violators of regulations are subject to a fine of not more than FIVE THOUSAND DOLLARS (\$5000.00) or imprisonment for not more than SIX (6) months or both (18 USC 3571).

Prohibitions: It is prohibited to possess or operate an Over Snow Motor Vehicle on the Flathead National Forest other than in accordance with these designations (CFR 261.14), as per the Flathead Over Snow Motor Vehicle Use Maps dated March 2007.



MOTORIZED WINTER RECREATION RESTRICTIONS

ALL TRAVEL INFORMATION ON THIS MAP PERTAINS TO OVER SNOW MOTOR VEHICLE USE ONLY

- FOREST SERVICE - OPEN TO OVER SNOW MOTOR VEHICLE ACCESS DEC 1 - MARCH 31
 - LOST JOHNNY - AREA OPEN DEC 1 - MAY 31
 - SIX MILE - AREA OPEN DEC 1 - APRIL 30
 - CHALLENGE/SKYLAND - AREA OPEN DEC 1 - MAY 15
 - AREA RESTRICTED YEARLONG
 - WILDERNESS - RESTRICTED YEARLONG
 - ROAD OPEN - CONDITIONS PERMITTING
 - ROAD TEMPLATE (OPEN DEC 1 - MARCH 31 ON NATIONAL FOREST SYSTEM LANDS)
 - ROAD CORRIDOR* OPEN YEARLONG, CONDITIONS PERMITTING (GLACIER VIEW ONLY)
 - ROAD CORRIDOR* OPEN DEC 1 - MARCH 31 (GLACIER VIEW ONLY)
 - *ROAD CORRIDOR - 100 FEET EITHER SIDE OF ROAD
 - ROUTE RESTRICTED YEARLONG
 - ROUTE RESTRICTED APRIL 1 - JUNE 30
 - TRAIL RESTRICTED YEARLONG
 - TRAIL OPEN DEC 1 - MAY 15
 - GROOMED TRAIL - SEE MAP FOR DATES
 - GROOMED TRAIL - ROAD OPEN
 - PARKING AREA
 - FOREST SERVICE OFFICE
 - RENTAL CABIN
- OWNERSHIP**
- PRIVATE
 - STATE
 - GLACIER NATIONAL PARK

IT IS RECOGNIZED THAT THERE ARE INHERENT RISKS TO THE SPORT OF SNOWMOBILING AND THE PRUDENT SNOWMOBILER SHOULD BE AWARE OF SUCH RISKS AND TAKE NECESSARY PRECAUTIONS.

FOR INFORMATION

FOREST SUPERVISOR'S OFFICE
1935 3rd Ave East
Kalispell, MT 59901
(406) 758-5200

HUNGRY HORSE/GLACIER VIEW & SPOTTED BEAR DISTRICT OFFICE
8975 Hwy. 2 East
Hungry Horse, MT 59919
(406) 387 - 3800

SWAN LAKE RANGER DISTRICT OFFICE
200 Ranger Station Road
Bigfork, MT 59911
(406) 837 - 7500

IT IS UNLAWFUL TO OPERATE OVER SNOW VEHICLES ON PLOWED ROADS OR ANY ROAD DRIVEABLE BY CONVENTIONAL MOTORIZED VEHICLES, REGARDLESS OF THE TRAVEL DESIGNATION DISPLAYED ON THIS MAP.

