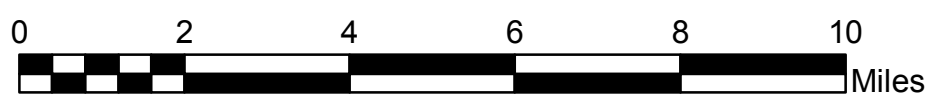


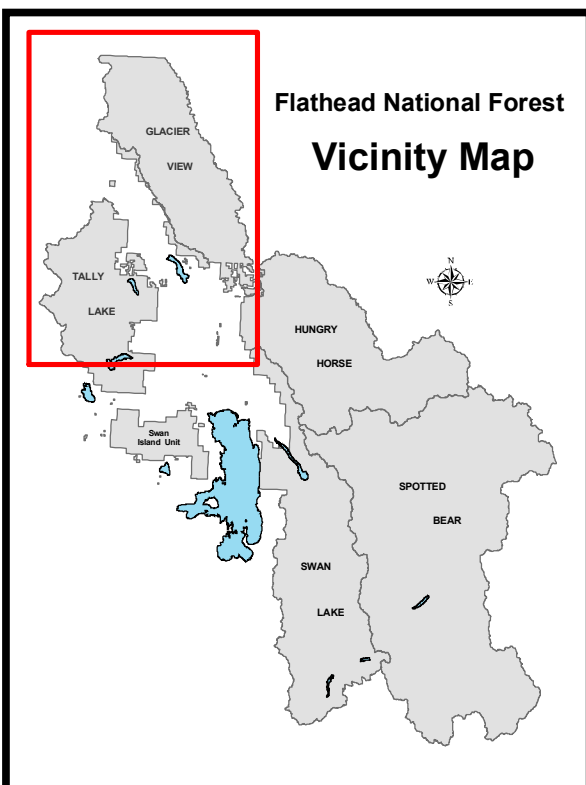
**Glacier View & Tally Lake Districts  
Flathead National Forest**

**OVER SNOW  
MOTOR VEHICLE  
USE MAP**

Prepared March 2007



**IT IS UNLAWFUL TO OPERATE OVER SNOW VEHICLES ON PLOWED ROADS OR ANY ROAD DRIVEABLE BY CONVENTIONAL MOTORIZED VEHICLES, REGARDLESS OF THE TRAVEL DESIGNATION DISPLAYED ON THIS MAP.**



This map displays Over Snow Motor Vehicle access compiled from the Flathead National Forest Winter Motorized Recreation Plan.

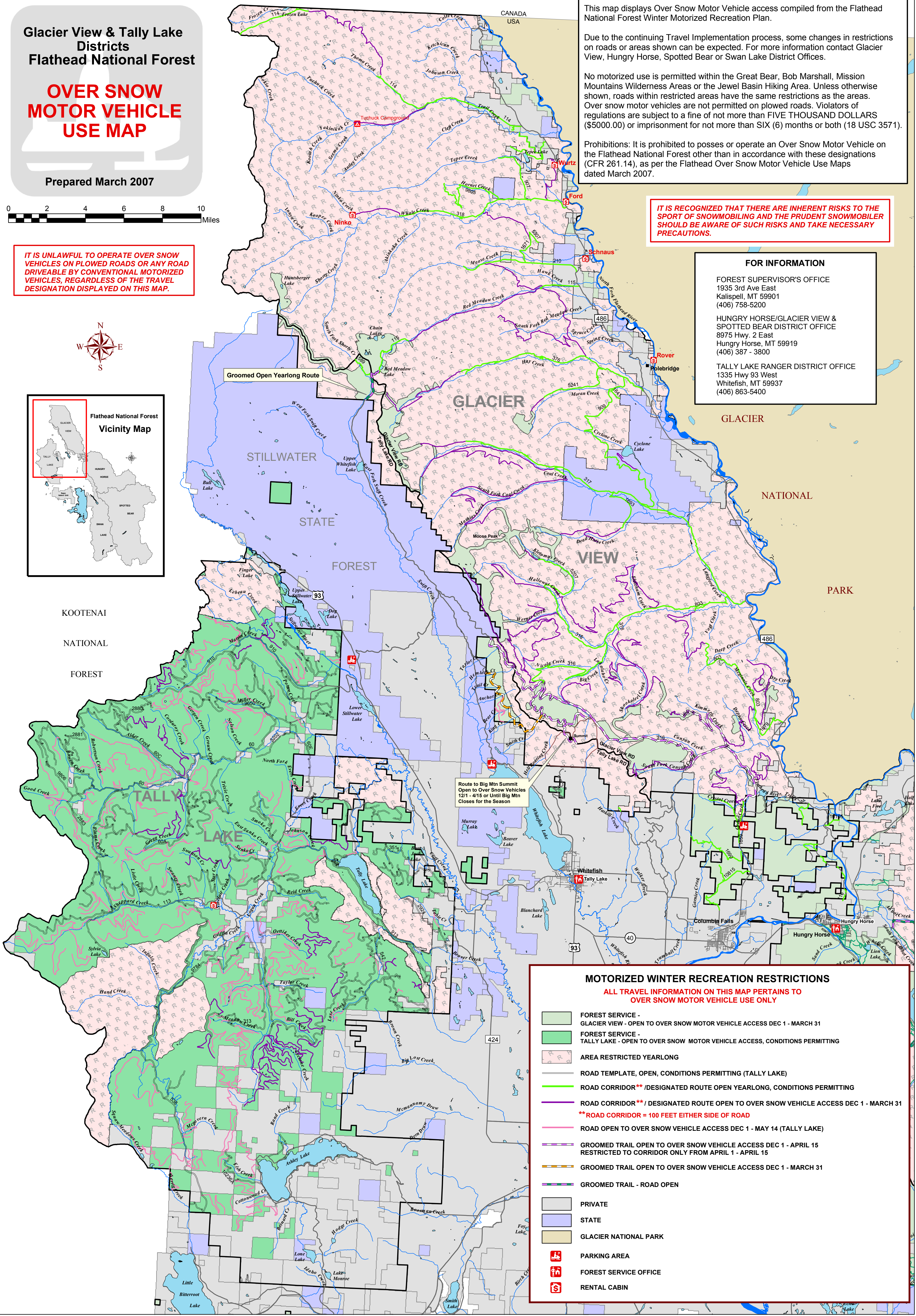
Due to the continuing Travel Implementation process, some changes in restrictions on roads or areas shown can be expected. For more information contact Glacier View, Hungry Horse, Spotted Bear or Swan Lake District Offices.

No motorized use is permitted within the Great Bear, Bob Marshall, Mission Mountains Wilderness Areas or the Jewel Basin Hiking Area. Unless otherwise shown, roads within restricted areas have the same restrictions as the areas. Over snow motor vehicles are not permitted on plowed roads. Violators of regulations are subject to a fine of not more than FIVE THOUSAND DOLLARS (\$5000.00) or imprisonment for not more than SIX (6) months or both (18 USC 3571).

Prohibitions: It is prohibited to possess or operate an Over Snow Motor Vehicle on the Flathead National Forest other than in accordance with these designations (CFR 261.14), as per the Flathead Over Snow Motor Vehicle Use Maps dated March 2007.

**IT IS RECOGNIZED THAT THERE ARE INHERENT RISKS TO THE SPORT OF SNOWMOBILING AND THE PRUDENT SNOWMOBILER SHOULD BE AWARE OF SUCH RISKS AND TAKE NECESSARY PRECAUTIONS.**

**FOR INFORMATION**  
 FOREST SUPERVISOR'S OFFICE  
 1935 3rd Ave East  
 Kalispell, MT 59901  
 (406) 758-5200  
 HUNGRY HORSE/GLACIER VIEW &  
 SPOTTED BEAR DISTRICT OFFICE  
 8975 Hwy. 2 East  
 Hungry Horse, MT 59919  
 (406) 387 - 3800  
 TALLY LAKE RANGER DISTRICT OFFICE  
 1335 Hwy 93 West  
 Whitefish, MT 59937  
 (406) 863-5400



**MOTORIZED WINTER RECREATION RESTRICTIONS**  
**ALL TRAVEL INFORMATION ON THIS MAP PERTAINS TO OVER SNOW MOTOR VEHICLE USE ONLY**

- FOREST SERVICE - GLACIER VIEW - OPEN TO OVER SNOW MOTOR VEHICLE ACCESS DEC 1 - MARCH 31
- FOREST SERVICE - TALLY LAKE - OPEN TO OVER SNOW MOTOR VEHICLE ACCESS, CONDITIONS PERMITTING
- AREA RESTRICTED YEARLONG
- ROAD TEMPLATE, OPEN, CONDITIONS PERMITTING (TALLY LAKE)
- ROAD CORRIDOR\*\* / DESIGNATED ROUTE OPEN YEARLONG, CONDITIONS PERMITTING
- ROAD CORRIDOR\*\* / DESIGNATED ROUTE OPEN TO OVER SNOW VEHICLE ACCESS DEC 1 - MARCH 31
- \*\*ROAD CORRIDOR = 100 FEET EITHER SIDE OF ROAD**
- ROAD OPEN TO OVER SNOW VEHICLE ACCESS DEC 1 - MAY 14 (TALLY LAKE)
- GROOMED TRAIL OPEN TO OVER SNOW VEHICLE ACCESS DEC 1 - APRIL 15  
RESTRICTED TO CORRIDOR ONLY FROM APRIL 1 - APRIL 15
- GROOMED TRAIL OPEN TO OVER SNOW VEHICLE ACCESS DEC 1 - MARCH 31
- GROOMED TRAIL - ROAD OPEN
- PRIVATE
- STATE
- GLACIER NATIONAL PARK
- PARKING AREA
- FOREST SERVICE OFFICE
- RENTAL CABIN