



The St. Croix East End Marine Park: A Guide for Managing Submerged Lands in the U.S. Virgin Islands

Susan Curtis, Program Development Specialist

Paige Rothenberger, Marine Resource Ecologist

Bill Rohring, Assistant Director

VIDPNR / CZM

St. Croix East End Marine Park



The U.S. Virgin Islands' first marine park was established on January 15, 2003

40 YEARS VISION

+ 3 YEARS COLLABORATION



St. Croix East End Marine Park

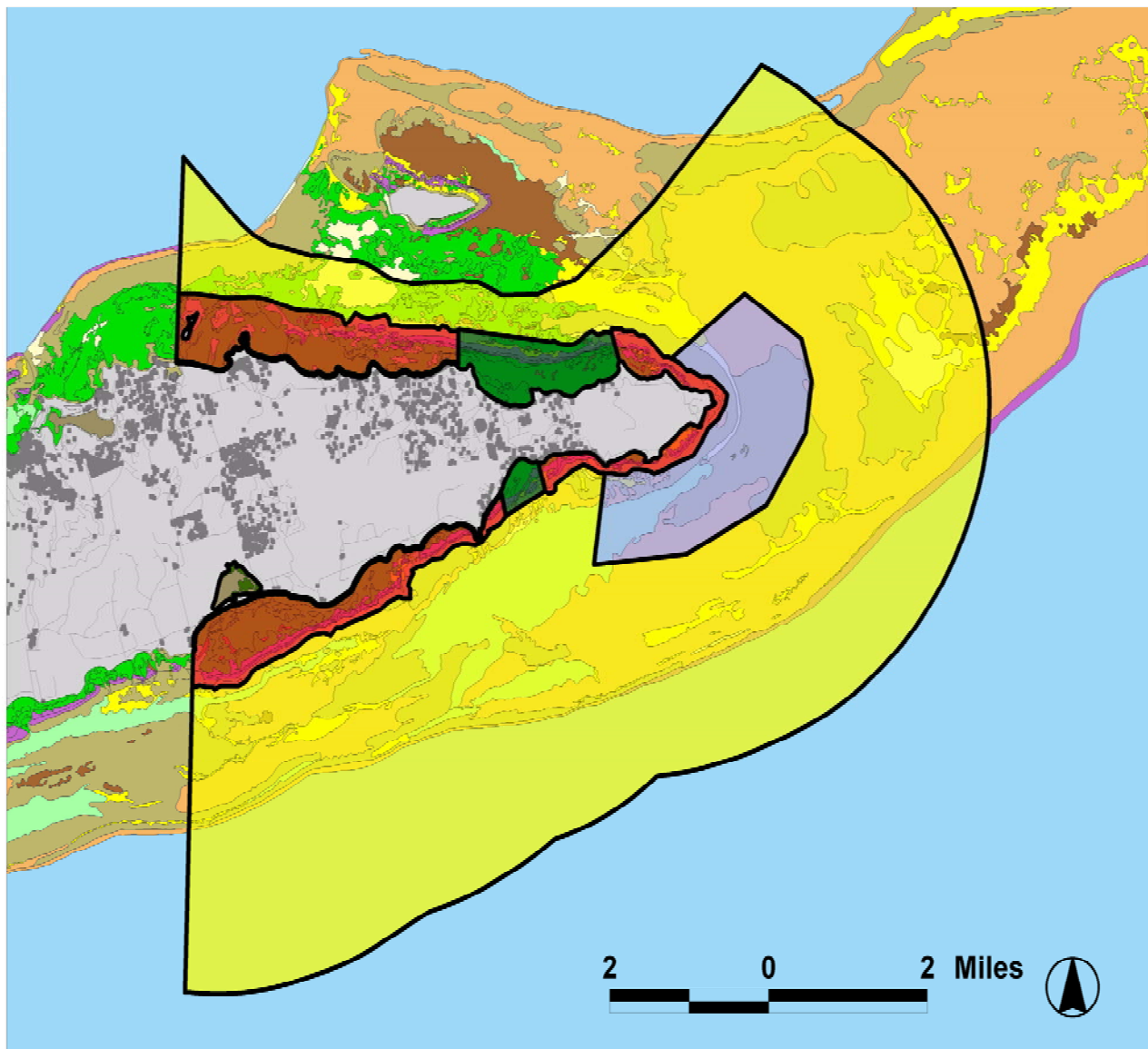
The first component in a territorial marine park system for the USVI

About the STXEEMP

- Multi-use park
- 4 management zones
- ~ 60 mi² area
- Incorporates portions of 4 APCs
- Mechanism to implement LAS strategies
- First step toward territorial park system



East End Marine Park (EEMP) Zonation



Legend

- ∧∨ EEMP Boundary and Zones:
- No Take Area (8.6 %)
 - Recreation Area (2.8 %)
 - Turtle Wildlife Area (7.0 %)
 - Open Fishing Area (81.6 %)
- Land, Houses, and Streets
- Deep Water (> 30 m)
- Shallow Water Delineated by Habitat Type (NOAA 2001):
- Linear Reef
 - Patch Reef
 - Colonized Pavement or Bedrock
 - Colonized Pavement with Sand Channels
 - Scattered Coral in Sand
 - Sand
 - Macroalgae
 - Seagrass
 - Mangrove
 - Mud



STXEEMP as Management Tool

- Legislation & Regulation
- Management, Monitoring & Research
- Education & Outreach



LAS Projects

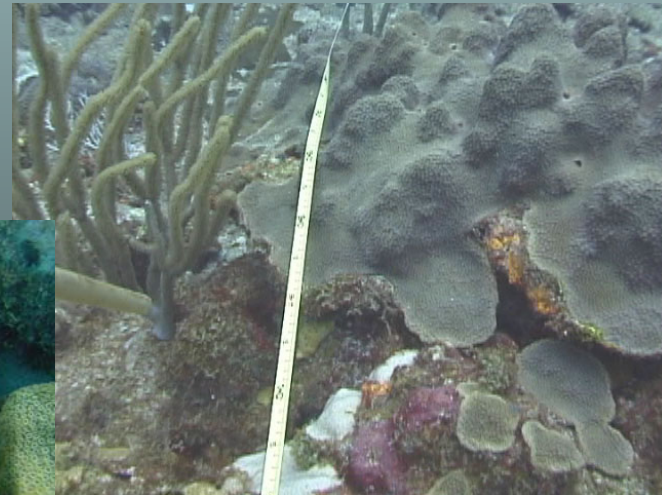
- Implementing Local Action Strategy projects
- Recreational Use/Overuse LAS
 - Vessel Use Assessment
- Coral reef/biological monitoring program
 - Sustainable Funding Strategy



LAS Projects

Land-Based Sources of Pollution

- Mileage of Unpaved Roads in adjacent watersheds
- Construction Trends
- Pollutant Analysis from cores
- Mapping



LAS Projects

- Lack of Awareness
 - Pilot Snorkeling Program
 - Virgin Islands Network of Environmental Educators
 - Coral Reefs Gap Assessment
 - Mobile Kiosk
 - Mobile Environmental Learning Lab
 - Development of an Information Center – Christened Boardwalk
 - STXEEMP Maps and Signage



Lessons Learned

- Expect/plan for learning curve
- Maintain contact with **ALL** that were involved in the process
 - Support, Support, Support (Community & Political – Local & Federal)
- Don't overreach on projects/grants
- Maintenance is hard work (i.e., don't rest too long)



???QUESTIONS???