

Cry of the Water
Stephanie Clark

Pollution in Broward County, FL

March 1, 2007

Pollution Impacting Reef

Pollution is causing outbreaks of red boring sponge and causing harmful algae blooms

- Sewer Ocean Outfall Pipes
- Lake Okeechobee releases
- Everglades, Agricultural and urban Runoff
- Chronic sedimentation from Dredging Projects
- Septic Tanks

Barracuda Reef, Dania Beach 2-3-07

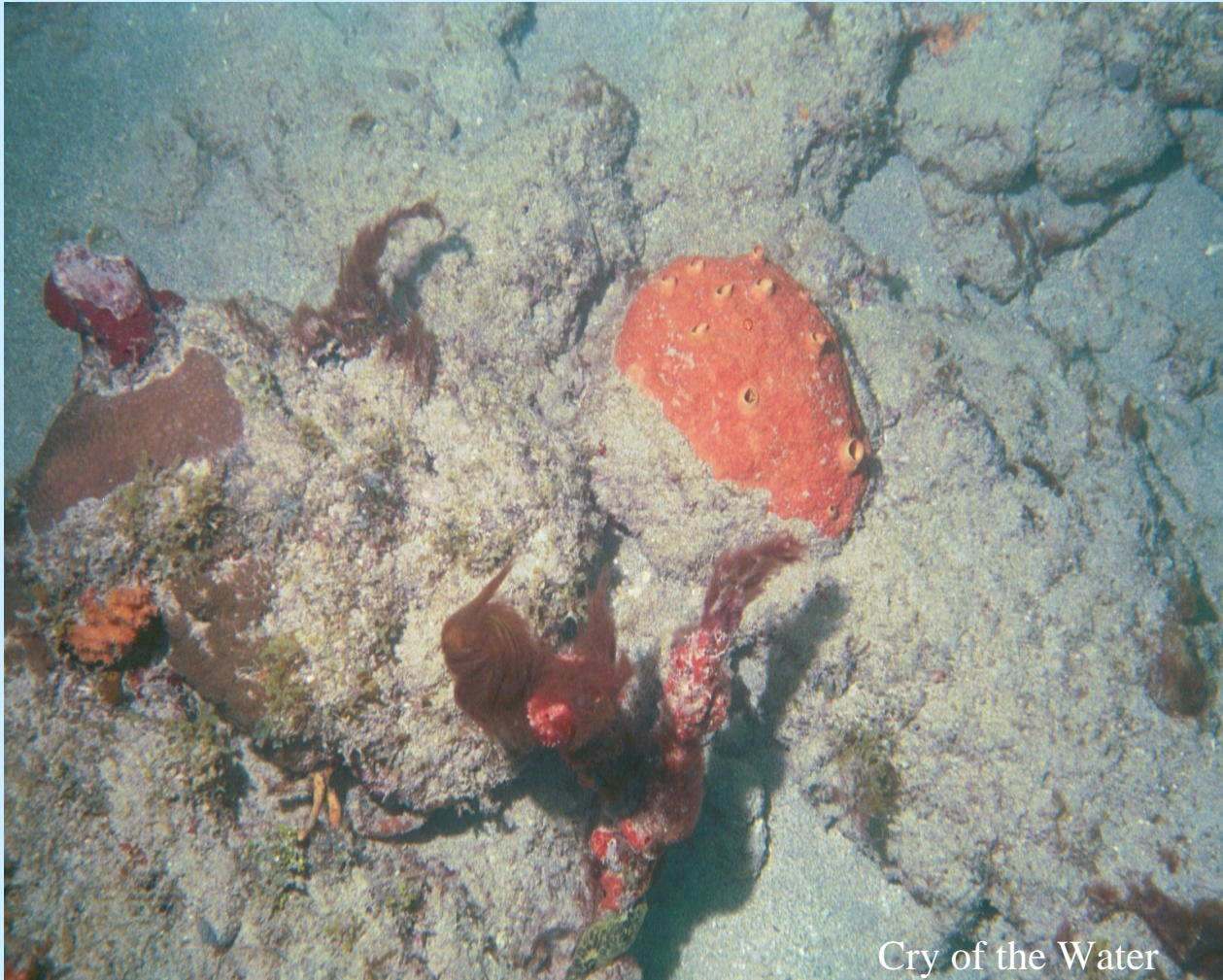


Red Boring Sponge Killing Coral Head

Barracuda Reef, Dania Beach 2-3-07



Barracuda Reef, Dania Beach 2-3-07



- Sedimentation from Dredge and Fill
- Cliona-red boring sponge killing coral head
- Algae blooming in winter covering soft corals



**Aerial view of Red Boring
Sponge (Cliona) off Hillsboro
Inlet**

Broward
County

Healthy Staghorn coral in the path of a Dredge and Fill Project



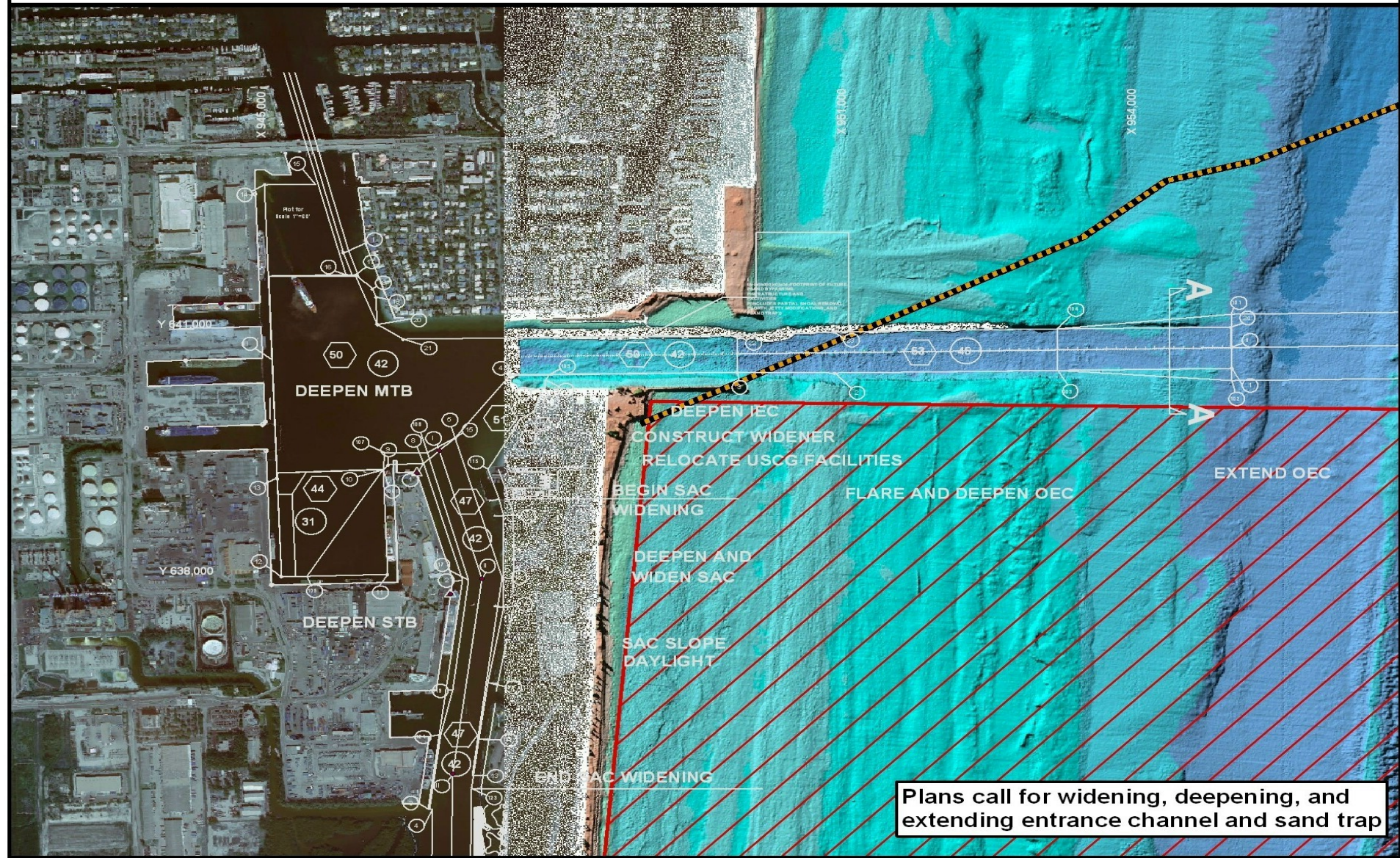


**Corals Buried and Smothered by Beach
Dredge Fill Hollywood Florida Aug 2005**

Proposed Port Project

- Army Corps proposes to Dynamite and Dredge Reefs
- Channel is a virtual mini lobster and fish sanctuary. For safety and security reasons diving is prohibited and fishing is limited
- Thousands of Corals, Acres of Reef and essential habitat will be destroyed

Proposed Port Everglades Expansion



Plans call for widening, deepening, and extending entrance channel and sand trap

Disclaimer:

This map was created by FDEP using their geographic information systems (GIS) data and data from other sources. This map contains data collected at different scales, with different levels of accuracy, and/or covering different periods of time. It is intended for display purposes only. Any other use is not advised.

For further information, please contact Georgia Vince at (561) 681-6642 (applications, permits, and enforcement)



This magnificent coral reef in Ft. Lauderdale is about to be destroyed by a proposed beach dredge and fill project. It is the last remaining staghorn coral reef for shore diving in the entire continental U.S.

Do something. Voice concern.
charlie.crist@myflorida.com
michael.sole@dep.state.fl.us
Contact: www.cryofthewater.org

© Copyright 2007 Michael Greenberg All Rights Reserved
Mike@NewEraStudios.com zoomable version www.NewEraStudios.com/CryOfTheStaghorn.html

See an 8 foot area of Staghorn coral reef with zoomable detail down to the fish and polyp level of magnification. Part of an ongoing project to recreate zoomable coral reefs for education by Michael Greenberg..

<http://www.newerastudios.com/cryofthestaghorn.html>



© Copyright 2007 Michael Greenberg All Rights Reserved
Mike@NewEraStudios.com zoomable version www.NewEraStudios.com/CryOfTheStaghorn.html



© Copyright 2007 Michael Greenberg All Rights Reserved
Mike@NewEraStudios.com zoomable version www.NewEraStudios.com/CryOfTheStaghorn.html

Outstanding Florida Waters

- With all these proposed projects it's know wonder FDEP has not processed our OFW application.
- We are asking our new governor Charlie Crist and the secretary of FDEP Mike Sole to make the reefs of Southeast Florida a priority in 2007

Blueprint to Florida's Coastal and Ocean Future

- Identifies the major problems threatening Florida's ocean waters and coastlines and the action needed to solve these problems

www.nrdc.org/water/oceans/Florida/flfuture.pdf

For Additional Information Contact

Cry of the Water

Reefteam2@yahoo.com

www.cryofthewater.org

954-753-9737

P.O. Box 8143

Coral Springs, Fl 33065