

## Trade Adjustment Assistance

See our program website at  
<http://www.doleta.gov/tradeact/>

### Analysis

- Trade Adjustment Assistance achieved two out of its three performance goals for this period ending on June 30, 2008:

  - There was a 2.5 percent increase in average earnings between June 2007 and June, 2008.
  - The employment retention rate (ERR) rose two percentage points between June, 2007 and June, 2008.
  - Both the entered employment rate (EER) and the employment retention rate have moved in a parallel manner over the past eight quarters.
- There was a two percentage point decline in the entered employment rate (EER) between June, 2007 and June, 2008.

### Further Analysis

The TAA program certified an estimated 146,680 trade affected worker during FY 2007 while processing 2,218 petitions for TAA. 93,683 individuals were in TAA sponsored training in FY 2007.

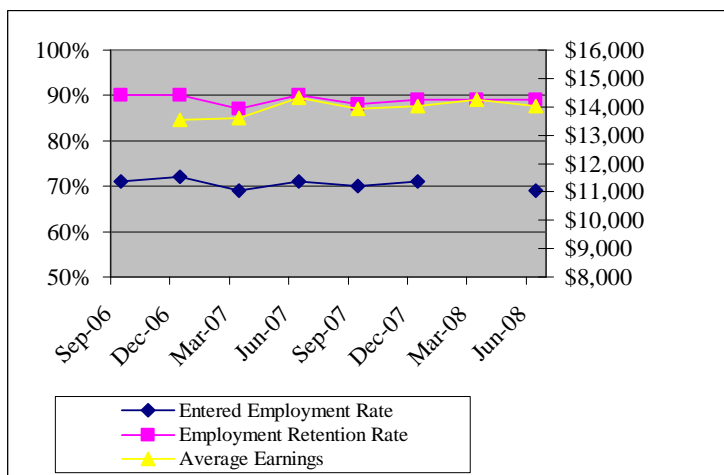
- 49,322 entered training during FY 2007 throughout the country.
- 44,361 continued with training from FY 2006 into FY 2007.
- TAA petition processing time remained well below the statutory limit of 40 days; in FY 2007 processing was 32.8 days.

## Charting Program Performance

### Current Quarter/One Year Ago

Performance Measure	6/30/2008	6/30/2007
Entered Employment*	67%	69%
Retained Employment*	91%	89%
Average Earnings*	\$14,365	\$14,016

### Program Performance in the Past Eight Quarters\*



\* In order to capture complete information on exiting participants, employment and wage data is collected on activity that occurs for three quarters after exit; in addition, data on this activity can take up to two additional quarters to become available to states. As a result, the report quarter is actually five quarters after the participants' exit quarter.

### Program Description

The TAA program is an integral part of the comprehensive workforce development system. The program is essential to helping workers dislocated because of foreign trade adjust to changing market conditions and shifting skill requirements. Addressing the needs of trade-affected workers involved in this transformation is a unique challenge because, in general, these workers are being dislocated from relatively outdated-skill, high-wage employment. In many cases, this is complicated by mass layoffs or plant closures that occur in single industry towns, which makes finding comparable employment in the same geographic area difficult. Furthermore, many of these jobs are lost permanently from the domestic economy, requiring the skills of affected workers to be completely retooled.

**Program Highlights/Innovations**

In order to fuel innovative regional economic development, ETA is funding a total of 39 initiatives throughout the United States using the WIRED framework. ETA is also now funding Regional Innovation Grants, which will provide the opportunity to harness the experienced manufacturing background of many TAA certified workers to feed current market demands. Using targeted training to develop skills in high demand advanced manufacturing industries, TAA participants will have the opportunity to participate in the transformation of their local economies.