



# Science and Traditional Knowledge: An Arranged Marriage that Works

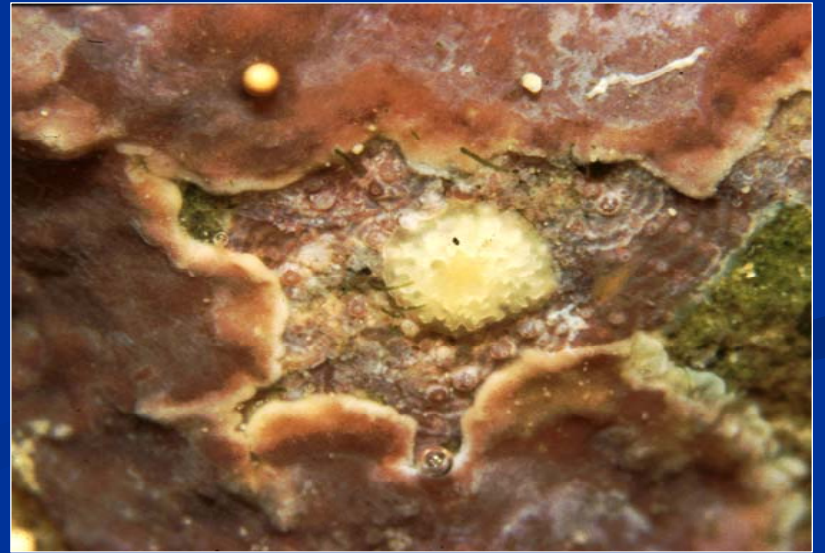
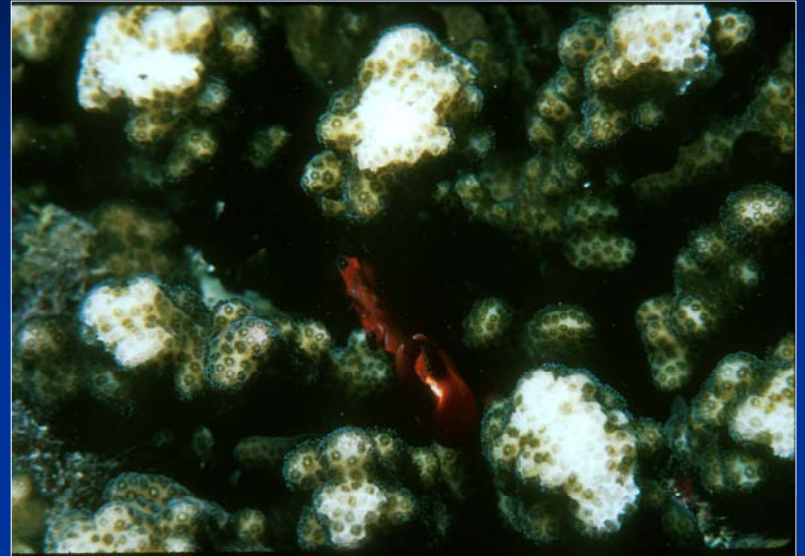
Dr. Bob Richmond

Kewalo Marine Laboratory, University of Hawaii at Manoa

# Traditional Knowledge: Marine Resource Use and Management



# Changes in Community Characteristics





# Ngerikill Bay, Airai Village – Republic of Palau



# Community Meetings – Ngermeduu Bay



# Pohnpei

## Enipein Watershed



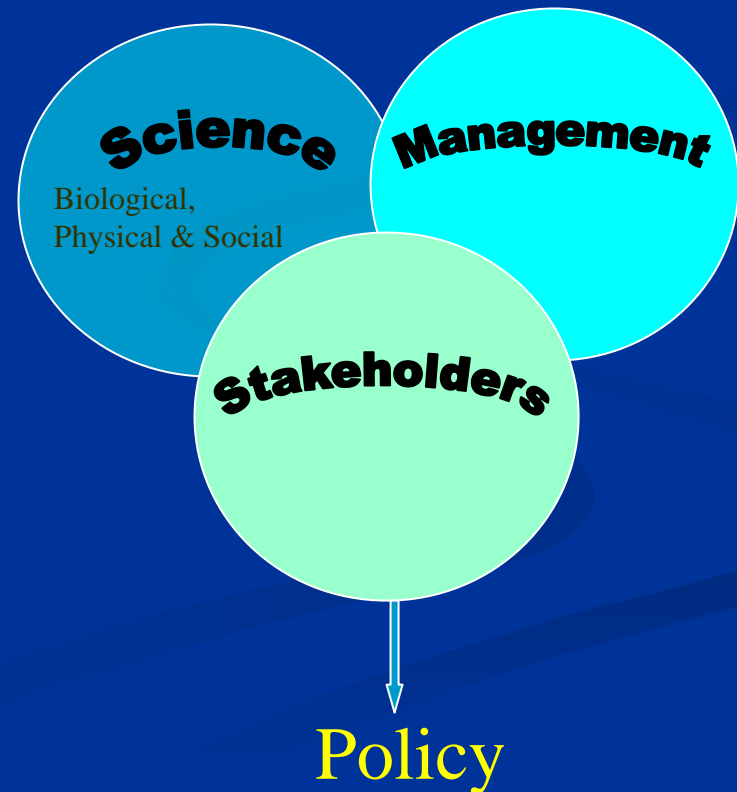
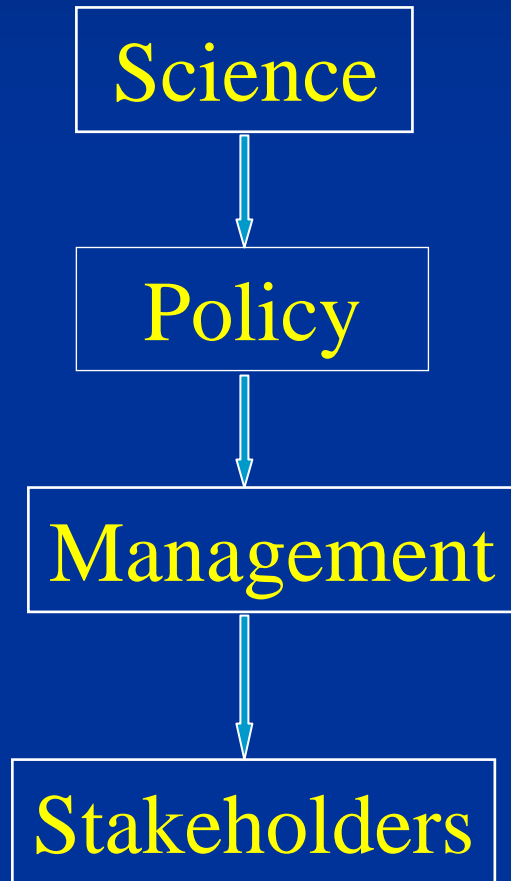
# Science + Management → Policy and Action





# The Role of Science and Scientists: Support, Cooperation, Integration

Top - down



# Establishing Relationships, Goals and Objectives

What do I want to achieve?

Science (publications/tenure)

Policy (re-election/service)

Industry (profits)

Community (quality of life)

Goals and Objectives

What do I get out of this?

# Communicating Science

- Appropriate presentations to appropriate audiences
- Addressing uncertainty
- Being available and building trust

**COMPASS** - Communication Partnership for Science and the Sea (<http://www.compassonline.org/>)

**Aldo Leopold Fellowship Program** –  
(<http://www.leopoldleadership.org/>)

# Local and Regional Capacity



# Education and Capacity - NSF ATE / UMEB





# Attributes of science applied to Societal Needs

- “ if science cannot lead us to wisdom, as well as power, it is surely no science at all” Aldo Leopold, *Ecology and Politics*, 1941
- Science is a tool that can transcend politics and cultural difference by providing truthful answers, and as such, can be used to foster cooperation and develop solutions to society’s problems

# Partnerships, Trust and Common Goals

