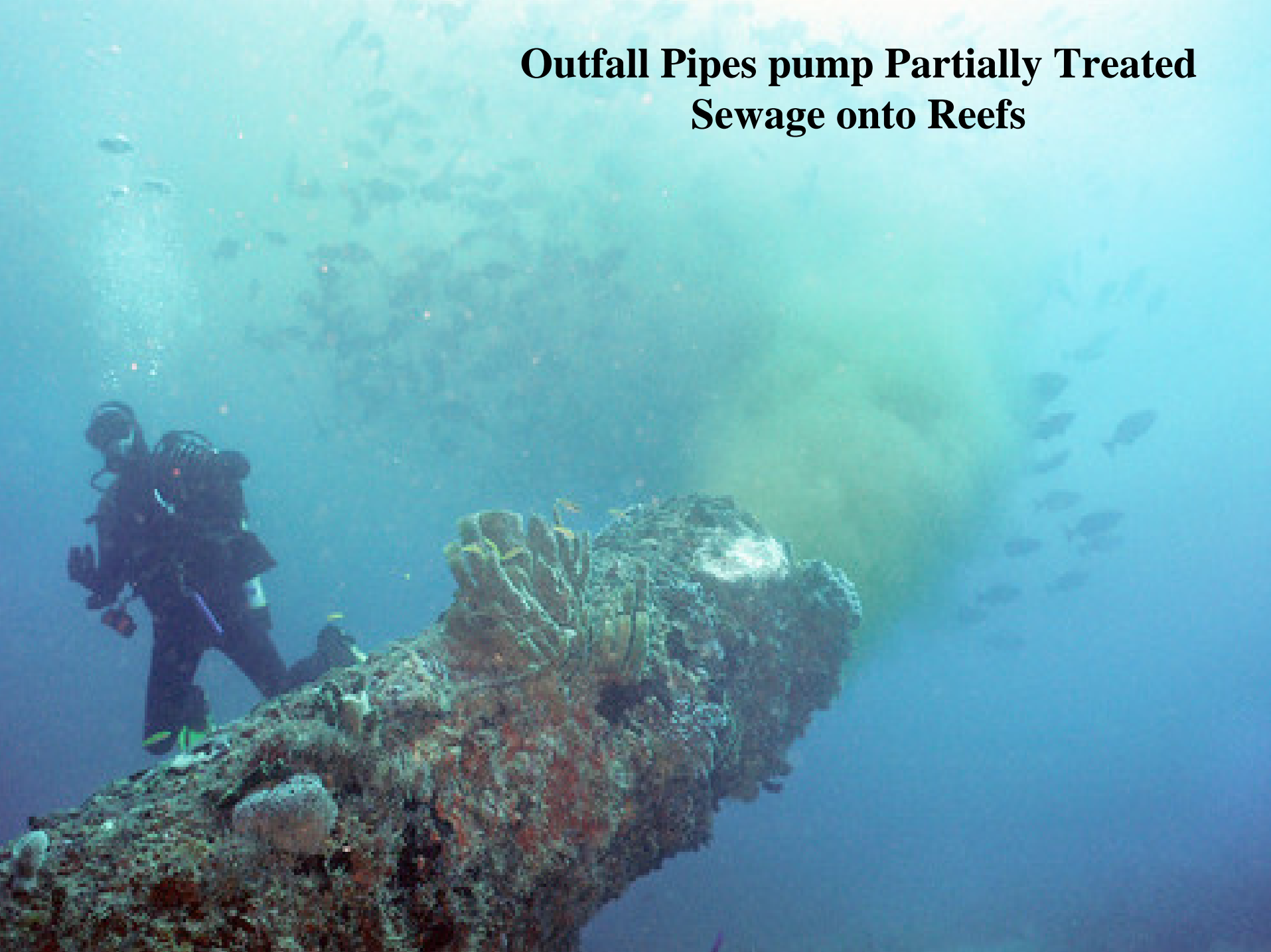


Cry of the Water
Stephanie Clark

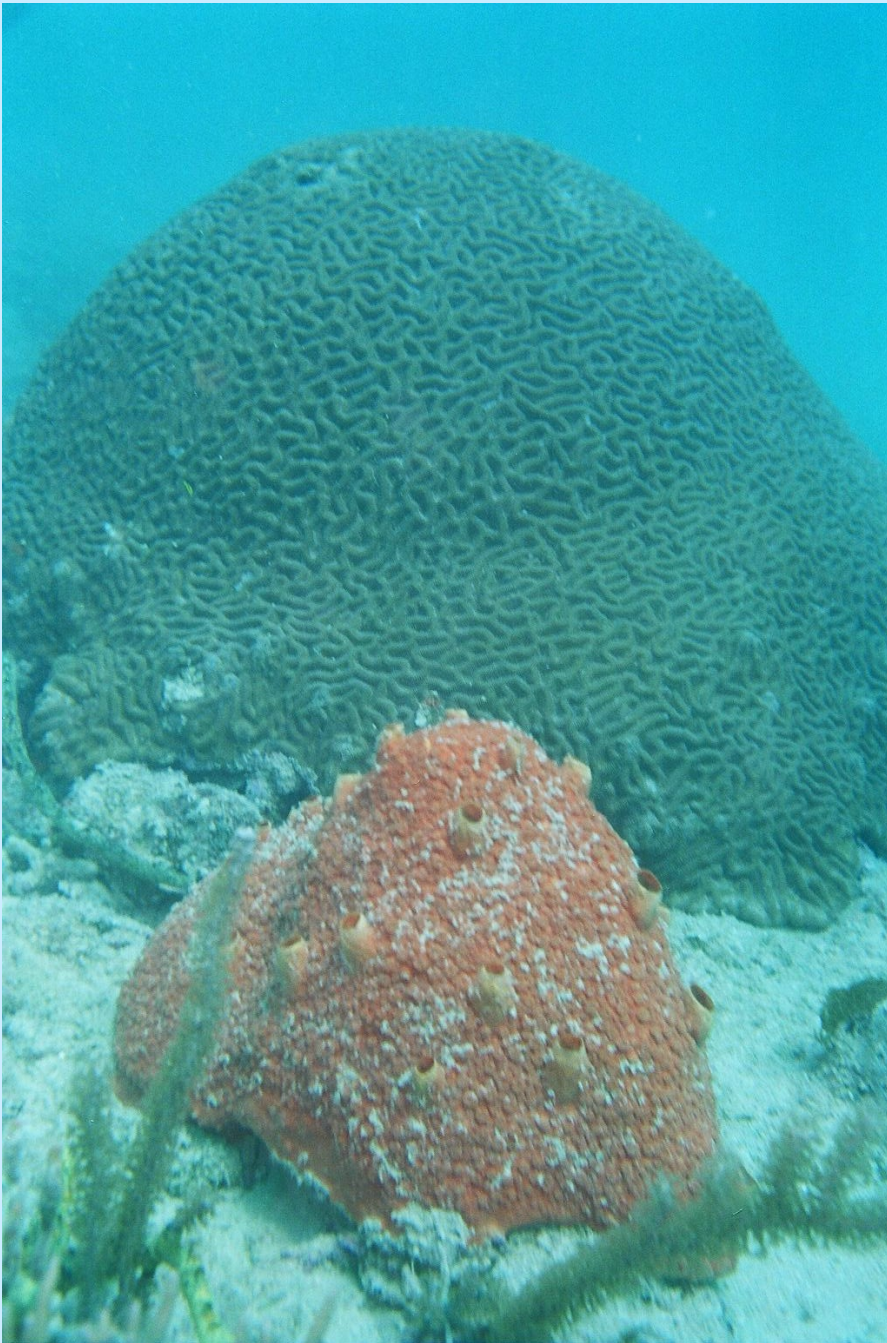
October 24, 2006

Outfall Pipes pump Partially Treated Sewage onto Reefs



Sewer Outfalls

- 6 outfall pipes continue to pump 300 –500 millions of gallons a day of inadequately treated sewage on to
- Eutrophication of the reef continues to cause outbreaks of harmful algae blooms
- Outbreaks of red boring sponge (*Cliona*) is killing coral and eroding the reef at an alarming rate.



Cliona covering Coral

Everglades Restoration at What Cost?

- One of the biggest mistakes in Everglade's Restoration (CERP) has been not adequately addressing the impacts to Coastal and Marine Habitats

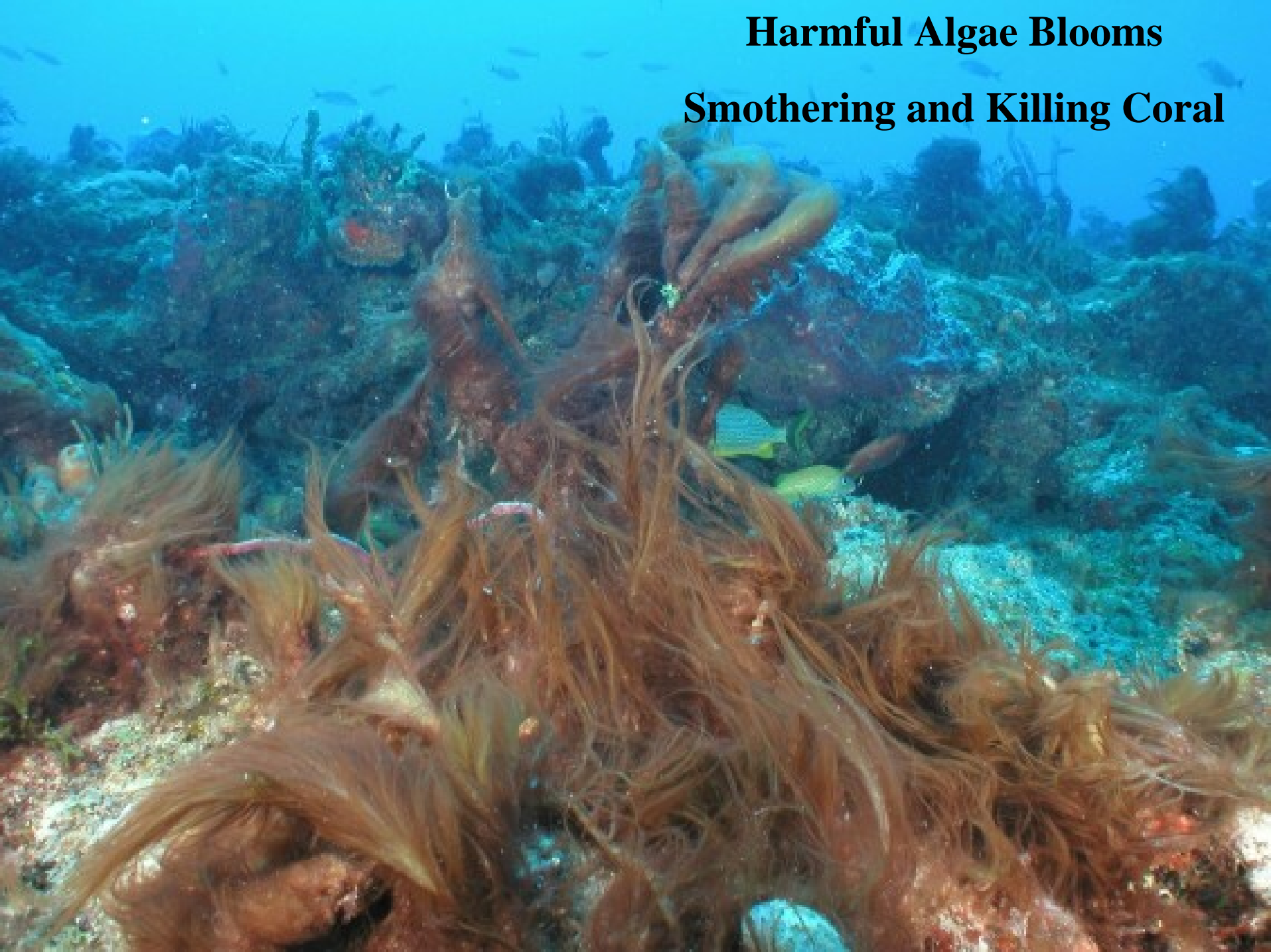
- It is now illegal to discharge polluted water into the Everglades so the option has been to put it to Tide or send it through Storm Water Treatment Area's
- STA's cannot handle the volume of water needed to be cleaned
- Damage to the dike caused by Hurricane Wilma have caused fears of the dike around the Lake breaking and calling for lower lake levels reducing the storage capacity requiring more discharges to coastal areas

Rosette Spoonbills fly over STA in West Palm Beach



Harmful Algae Blooms

Smothering and Killing Coral





- The same polluted water that used to cause Cattails to grow in the Everglades now causes harmful algae blooms to grow on the reefs and essential fish habitats along the Florida's Southeast Coast

Growth at What Cost?

- The policy makers in Florida continue to look for new sources of drinking water for more growth but fail to properly address waste-water and storm-water problems associated with past growth

Blueprint to Florida's Coastal and Ocean Future

- Identifies the major problems threatening Florida's ocean waters and coastlines and the action needed to solve these problems

www.nrdc.org/water/oceans/Florida/flfuture.pdf

For Additional Information Contact

Cry of the Water

Stephanie Clark

Reefteam2@yahoo.com

www.cryofthewater.org

954-753-9737

P.O. Box 8143

Coral Springs, Fl 33065