

## **Section C -- Unemployment and Sickness Benefits**

This section presents data on unemployment and sickness benefits paid to qualified railroad employees under the Railroad Unemployment Insurance Act. Railroad unemployment and sickness benefits, by law, are based on a July-June benefit year. Therefore, railroad unemployment and sickness insurance benefit operations are presented on a benefit year basis, rather than on a fiscal year basis.

Normal benefits of each type may be paid for as many as 130 days in a period of 26 or more weeks but may not exceed the total creditable base year compensation of the beneficiary. After exhaustion of normal benefits, an employee with 10 or more years of railroad service may receive additional benefits in an extended benefit period provided he/she has not voluntarily retired, has not left work without good cause (for unemployment benefits only), and is less than 65 years old (for sickness benefits only). Extended benefits are paid in a 13-week period.

An employee was qualified for benefit year 2006-2007 if in the preceding calendar (base) year his/her compensation for railroad work, excluding earnings over \$1,150 a month, was \$2,875 or more. Additionally, if the employee was a new entrant to the industry in the base year, he/she must have had at least five months of service in that year. For a long-service employee (one with 10 or more years of railroad service) a benefit year could be started early if he/she was not currently qualified but would be qualified for the next benefit year. Also, an extended benefit period could continue beyond the usual June 30 ending date of a benefit year and thus extend the duration of the employee's benefit year. Therefore, the tables in this section on payments for unemployment and sickness that occurred during the July 2006 - June 2007 period include benefits that technically were payable in extensions of the 2005-2006 benefit year or accelerations of the 2007-2008 benefit year as well as those payable for the general benefit year (2006-2007).

Table C1 shows the principal figures for operations in benefit year 2006-2007 and other recent years. Figures in this table refer to payments made and other administrative actions taken under the unemployment and sickness programs during the designated benefit year. Table C2 provides various unemployment and sickness benefit and beneficiary data for benefit years 1977-1978 through 2006-2007. Tables C3 through C7 contain benefit data for unemployment and sickness which occurred in claim periods paid during the particular benefit years stated in the table headings or to which reference is made in the footnotes. Table C8 is a graph of unemployment and sickness beneficiaries by month for benefit year 2006-2007. Table C9 shows the distribution of experience based contribution rates, by number of employers, for 2007.

Payments for maternity under a separate program were discontinued by amendments adopted in 1968. However, provision was made for payment of sickness benefits to female employees prevented from working because of pregnancy or childbirth. The sickness benefit data in this section include such payments.

The unemployment and sickness beneficiary tables for benefit year 2006-2007 include all payments made by June 30, 2007. Benefits are paid for compensable days of unemployment or sickness at a daily rate equal to 60 percent of the employee's last daily rate of pay in the base year, subject to a \$57.00 maximum and a \$12.70 minimum in benefit year 2006-2007.

The most important qualifications of the data for each table are shown in footnotes to the table.

**Table C1.-- Principal administrative data for the unemployment and sickness benefit programs, benefit years 2002-2003 through 2006-2007**

Item	2002-2003	2003-2004	2004-2005	2005-2006	2006-2007
<b>Qualified employees.....</b>	259,100	248,800	242,200	244,600	250,200
<b>Maximum daily benefit rate.....</b>	\$52	\$55	\$56	\$56	\$57
<b>UNEMPLOYMENT BENEFITS</b>					
<b>Net amount of benefits paid (thousands)</b>	\$45,614	\$38,264	\$30,179	\$30,586	\$29,627
<b>Payments:<sup>1</sup></b>					
<b>Number.....</b>	96,700	76,400	62,000	54,000	56,600
<b>Average amount per two week claim period.....</b>	\$449	\$477	\$489	\$490	\$499
<b>Beneficiaries.....</b>	15,400	11,700	9,300	8,900	9,500
<b>Applications received.....</b>	18,300	14,400	11,700	11,400	12,200
<b>Claims received.....</b>	116,400	91,700	73,700	65,000	68,800
<b>Normal benefit accounts exhausted.....</b>	2,900	2,400	2,200	1,900	1,800
<b>Non-compensable waiting period only<sup>2</sup>..</b>	(3)	(3)	(3)	(3)	(3)
<b>SICKNESS BENEFITS</b>					
<b>Net amount of benefits paid (thousands)</b>	\$49,891	\$46,413	\$43,405	\$43,801	\$43,533
<b>Payments:<sup>1</sup></b>					
<b>Number.....</b>	160,700	152,700	140,200	135,500	128,300
<b>Average amount per two week claim period.....</b>	\$461	\$486	\$496	\$496	\$503
<b>Beneficiaries.....</b>	22,400	21,600	20,200	19,700	19,000
<b>Applications received.....</b>	27,900	26,600	25,100	26,400	23,300
<b>Claims received.....</b>	185,700	176,800	162,700	157,800	149,700
<b>Normal benefit accounts exhausted.....</b>	4,700	4,500	3,900	3,700	3,500
<b>Non-compensable waiting period only<sup>2</sup>..</b>	100	200	100	100	100

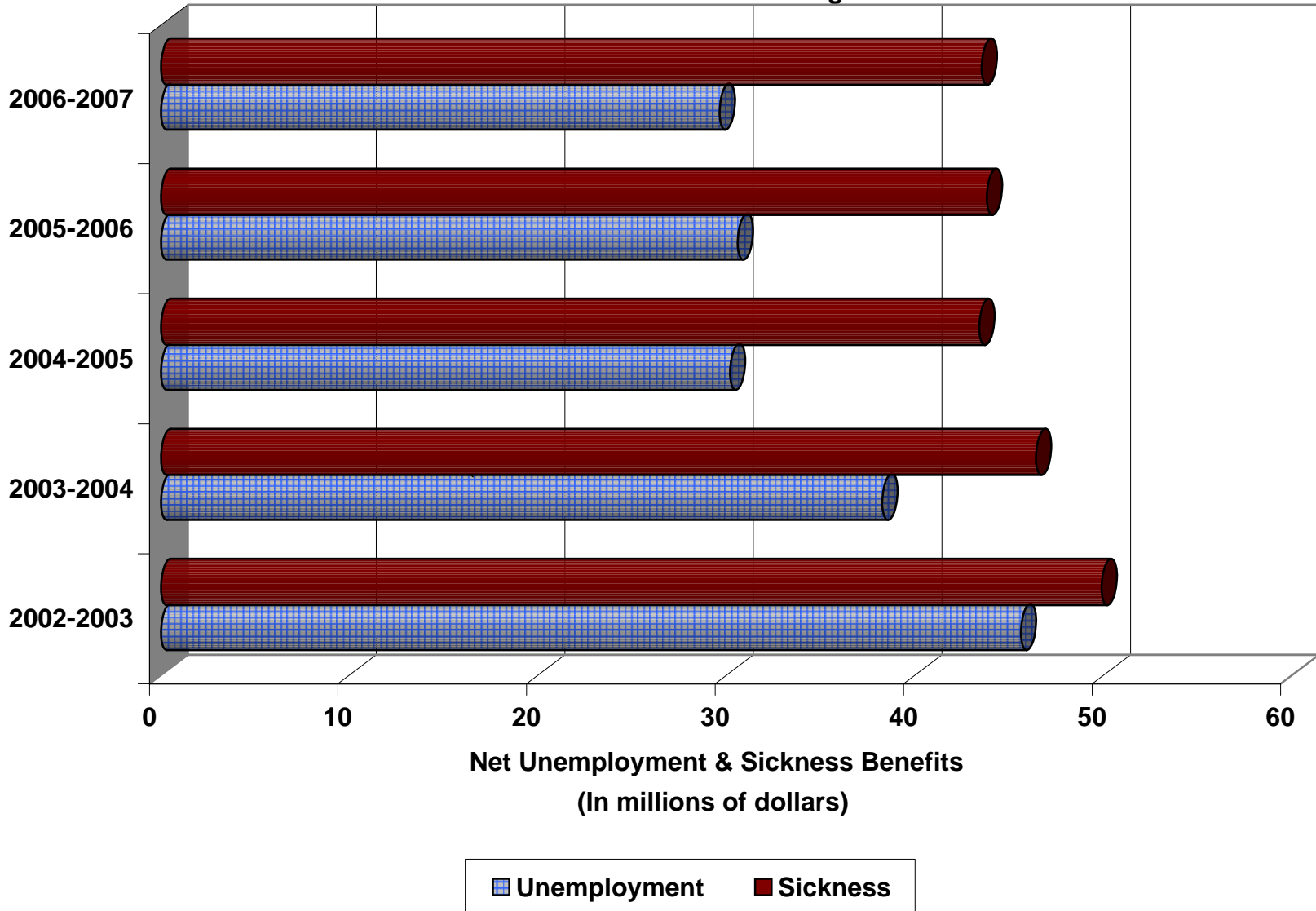
<sup>1</sup> Not adjusted for recoveries or settlements of underpayments.

<sup>2</sup> Benefits are payable for each day of unemployment or sickness in excess of 7 during the first 14-day registration period in a benefit year.

<sup>3</sup> Less than 50.

NOTE.--Data covered program activities during the year, regardless of when unemployment or sickness occurred.

**Table C1.--Net Benefits Under The Railroad Unemployment Insurance Act,  
Benefit Years 2002-2003 Through 2006-2007**



**Table C2.--Unemployment and sickness beneficiaries, benefit averages, and related data, by benefit year, 1977-1978 through 2006-2007**

Year	Number of beneficiaries	Amount of gross benefits (thousands)	Beneficiaries per 100 qualified employees <sup>1</sup>	Benefit exhaustions per 100 beneficiaries <sup>1</sup>	Average per beneficiary				
					Creditable registration periods	Creditable/compensable days <sup>2</sup>	Daily benefit	Amount of benefits	
								Total for year	Total per week <sup>3</sup>
<b>UNEMPLOYMENT</b>									
1977-1978.....	92,700	\$114,460	15	11	6.3	75	\$24.88	\$1,235	\$124.40
1978-1979.....	96,400	102,575	16	7	5.4	64	24.94	1,065	124.70
1979-1980.....	102,800	122,021	17	11	5.9	71	24.95	1,187	124.80
1980-1981.....	120,300	213,732	19	23	8.5	105	24.97	1,777	124.90
1981-1982.....	145,200	258,822	24	26	8.5	105	24.98	1,783	124.90
1982-1983.....	174,700	398,448	30	37	10.6	134	24.99	2,281	124.95
1983-1984.....	108,500	209,126	21	28	9.2	114	24.98	1,928	124.90
1984-1985.....	80,000	127,437	17	19	7.9	96	24.98	1,594	124.90
1985-1986.....	86,800	142,795	19	19	8.0	98	24.98	1,645	124.90
1986-1987.....	75,200	127,235	18	8	8.2	68	24.72	1,693	123.60
1987-1988.....	54,400	84,938	14	18	7.5	63	24.72	1,561	123.60
1988-1989.....	35,200	59,047	10	15	7.0	59	28.29	1,679	141.45
1989-1990.....	29,900	57,488	9	17	7.5	64	30.14	1,921	150.70
1990-1991.....	30,500	63,315	9	18	7.9	67	30.85	2,078	154.25
1991-1992.....	26,400	<sup>4</sup> 62,185	8	21	8.7	76	30.94	2,353	154.70
1992-1993.....	20,700	<sup>4</sup> 51,150	7	19	8.5	75	32.82	2,466	164.10
1993-1994.....	18,600	44,016	6	16	8.1	71	32.94	2,348	164.70
1994-1995.....	18,700	39,670	6	15	6.8	59	35.73	2,120	178.65
1995-1996.....	16,800	42,263	6	19	7.8	69	35.86	2,461	179.30
1996-1997.....	15,300	40,228	5	18	7.2	63	40.57	2,564	202.85
1997-1998.....	11,300	30,175	4	18	6.9	60	42.78	2,571	213.90
1998-1999.....	12,600	35,354	5	16	7.0	62	43.81	2,719	219.05
1999-2000.....	13,700	38,317	5	13	6.9	61	45.51	2,759	227.56
2000-2001.....	16,700	46,120	6	13	6.6	57	47.81	2,736	239.05
2001-2002.....	17,800	51,398	7	14	6.7	58	49.62	2,862	248.08
2002-2003.....	15,400	49,563	6	17	7.1	62	51.45	3,182	257.27
2003-2004.....	11,700	41,315	5	19	7.4	64	54.38	3,503	271.89
2004-2005.....	9,300	34,394	4	21	7.4	66	55.27	3,633	276.34
2005-2006.....	8,900	30,478	4	18	6.9	61	55.27	3,393	276.35
2006-2007.....	9,500	32,529	4	17	6.8	60	56.29	3,398	281.47

See footnotes at end of table.

**Table C2.--Unemployment and sickness beneficiaries, benefit averages, and related data, by benefit year, 1977-1978 through 2006-2007 - Continued**

Year	Number of beneficiaries	Amount of gross benefits (thousands)	Beneficiaries per 100 qualified employees <sup>1</sup>	Benefit exhaustions per 100 beneficiaries <sup>1</sup>	Average per beneficiary				
					Creditable registration periods	Creditable/compensable days <sup>2</sup>	Daily benefit	Amount of benefits	
								Total for year	Total per week <sup>3</sup>
<b>SICKNESS<sup>5</sup></b>									
1977-1978.....	75,200	\$92,213	12	12	5.6	75	\$23.49	\$1,266	\$117.50
1978-1979.....	71,600	87,129	12	12	5.4	72	24.14	1,216	120.70
1979-1980.....	70,500	84,633	11	11	5.3	70	24.59	1,201	122.95
1980-1981.....	68,900	82,990	11	11	5.2	70	24.75	1,205	123.80
1981-1982.....	66,400	83,570	11	12	5.4	72	24.85	1,255	124.25
1982-1983.....	59,300	81,077	10	15	5.8	78	24.88	1,366	124.40
1983-1984.....	52,000	70,000	10	14	5.8	77	24.88	1,346	124.40
1984-1985.....	48,100	65,763	10	14	5.9	78	24.88	1,368	124.40
1985-1986.....	46,400	69,114	10	17	6.4	85	24.88	1,491	124.40
1986-1987.....	45,200	72,678	11	19	6.9	65	24.69	1,609	123.45
1987-1988.....	41,700	66,809	11	18	6.9	65	24.74	1,602	123.70
1988-1989.....	33,700	62,115	9	19	7.1	67	27.63	1,845	138.15
1989-1990.....	28,200	58,337	8	20	7.2	68	30.24	2,068	151.20
1990-1991.....	25,600	54,528	8	21	7.4	69	30.81	2,133	154.05
1991-1992.....	23,600	52,666	7	21	7.7	72	30.97	2,232	154.85
1992-1993.....	21,800	50,693	7	20	7.6	71	32.80	2,323	164.00
1993-1994.....	21,600	50,613	7	16	7.5	71	32.98	2,328	164.90
1994-1995.....	21,000	54,006	7	20	7.7	72	35.74	2,573	178.70
1995-1996.....	20,400	55,437	7	21	7.9	74	35.94	2,652	179.70
1996-1997.....	20,500	60,566	7	21	7.6	70	40.18	2,825	200.90
1997-1998.....	20,500	63,356	7	18	7.7	69	42.90	2,967	214.50
1998-1999.....	20,600	64,203	8	16	7.6	68	43.91	2,999	219.55
1999-2000.....	22,000	69,992	8	17	7.8	69	45.75	3,152	228.73
2000-2001.....	23,000	78,584	8	19	7.9	71	47.88	3,388	239.42
2001-2002.....	23,000	84,125	9	21	8.2	73	49.85	3,629	249.25
2002-2003.....	22,400	83,690	9	19	8.0	71	51.83	3,701	259.17
2003-2004.....	21,600	83,718	9	19	7.9	70	54.80	3,848	274.02
2004-2005.....	20,200	78,547	8	18	7.8	69	55.89	3,855	279.46
2005-2006.....	19,700	76,041	8	17	7.7	69	55.93	3,835	279.63
2006-2007.....	19,000	73,140	8	17	7.6	67	56.83	3,814	284.17

See footnotes at end of table.

**Table C2.--Unemployment and sickness beneficiaries, benefit averages, and related data, by benefit year, 1977-1978 through 2006-2007 - Continued**

---

<sup>1</sup> Through benefit year 1985-1986, beneficiaries per 100 qualified employees based on data for current general benefit year; exhaustions per 100 beneficiaries refer to normal benefits only.

<sup>2</sup> Compensable days data was first used in benefit year 1986-1987. Previous years data refers to creditable days.

<sup>3</sup> Benefit for full week of unemployment or sickness.

<sup>4</sup> Includes benefits under Title V of the Emergency Unemployment Compensation Act of 1991, as amended, which provided extended unemployment benefits paid to claimants with less than 10 years of service and additional extended benefits to those with 10-14 years.

<sup>5</sup> Sickness data exclude benefits not payable because of concurrent entitlement to other social insurance benefits or because of receipt of a personal injury settlement.

NOTE.--Data include all unemployment and sickness in claims periods begun in the year. For this reason, and because adjustments of benefit amounts have occurred after tabulating cutoff dates, the total amounts of benefits differ substantially from the figures in Tables A1 and C1. Beginning in benefit year 1986-1987 the table was compiled using different source materials than those used in previous years.

**Table C3.--Unemployment and sickness beneficiaries in benefit year 2006-2007 and selected data, by completed years of service**

Completed years of service	Beneficiaries		Average per beneficiary		
	Total	Per 100 qualified employees	Compensable days on benefit rolls	Daily benefit	Amount of benefits for year
<b>UNEMPLOYMENT</b>					
Under 10.....	5,786	6	59	\$56.45	\$3,305
10-14 .....	1,134	5	67	56.12	3,786
15 and over .....	2,538	2	61	56.01	3,439
<b>Total .....</b>	<b>9,458</b>	<b>4</b>	<b>60</b>	<b>\$56.29</b>	<b>\$3,398</b>
<b>SICKNESS</b>					
Under 10.....	6,317	6	60	\$56.71	\$3,384
10-14 .....	1,982	8	72	56.44	4,081
15 and over .....	10,741	8	71	56.97	4,017
<b>Total .....</b>	<b>19,040</b>	<b>8</b>	<b>67</b>	<b>\$56.83</b>	<b>\$3,814</b>



**Table C4.--Unemployment and sickness beneficiaries, and total gross benefits for the year,  
by state, benefit year 2006-2007**

States	Unemployment benefits		Sickness benefits	
	Beneficiaries	Total amount	Beneficiaries	Total amount
Alabama .....	157	\$549,000	299	\$1,243,000
Alaska .....	58	334,000	4	25,000
Arizona .....	278	711,000	183	692,000
Arkansas .....	153	376,000	357	1,480,000
California .....	562	2,455,000	1,296	5,297,000
Colorado .....	108	350,000	219	814,000
Connecticut .....	27	114,000	110	493,000
Delaware .....	23	102,000	128	490,000
Washington DC .....	13	69,000	30	162,000
Florida .....	223	908,000	464	1,750,000
Georgia .....	276	976,000	523	2,062,000
Hawaii .....	.....	.....	.....	.....
Idaho .....	102	283,000	137	562,000
Illinois .....	888	3,531,000	1,558	5,982,000
Indiana .....	341	1,404,000	730	2,767,000
Iowa .....	268	793,000	311	1,031,000
Kansas .....	169	507,000	376	1,128,000
Kentucky .....	170	535,000	513	2,115,000
Louisiana .....	174	668,000	293	1,223,000
Maine .....	43	128,000	54	214,000
Maryland .....	112	455,000	436	1,832,000
Massachusetts .....	90	415,000	245	1,007,000
Michigan .....	258	779,000	451	1,906,000
Minnesota .....	252	823,000	359	1,377,000
Mississippi .....	83	346,000	146	543,000
Missouri .....	315	921,000	505	1,833,000
Montana .....	154	442,000	131	436,000
Nebraska .....	210	612,000	834	2,400,000
Nevada .....	53	208,000	80	321,000
New Hampshire .....	10	40,000	34	100,000
New Jersey .....	148	508,000	765	2,670,000
New Mexico .....	146	416,000	115	454,000

**Table C4.--Unemployment and sickness beneficiaries, and total gross benefits for the year,  
by state, benefit year 2006-2007 - Continued**

States	Unemployment benefits		Sickness benefits	
	Beneficiaries	Total amount	Beneficiaries	Total amount
<b>New York</b> . . . . .	423	\$1,448,000	981	\$4,012,000
<b>North Carolina</b> . . . . .	105	359,000	205	828,000
<b>North Dakota</b> . . . . .	162	541,000	106	365,000
<b>Ohio</b> . . . . .	458	1,460,000	775	3,062,000
<b>Oklahoma</b> . . . . .	79	234,000	97	378,000
<b>Oregon</b> . . . . .	104	311,000	186	641,000
<b>Pennsylvania</b> . . . . .	422	1,310,000	1,245	4,971,000
<b>Rhode Island</b> . . . . .	10	48,000	36	101,000
<b>South Carolina</b> . . . . .	83	287,000	177	732,000
<b>South Dakota</b> . . . . .	37	103,000	69	234,000
<b>Tennessee</b> . . . . .	149	494,000	385	1,505,000
<b>Texas</b> . . . . .	639	2,179,000	1,155	4,583,000
<b>Utah</b> . . . . .	121	332,000	142	474,000
<b>Vermont</b> . . . . .	10	33,000	5	20,000
<b>Virginia</b> . . . . .	165	593,000	471	1,913,000
<b>Washington</b> . . . . .	140	484,000	411	1,516,000
<b>West Virginia</b> . . . . .	79	245,000	314	1,368,000
<b>Wisconsin</b> . . . . .	281	988,000	393	1,264,000
<b>Wyoming</b> . . . . .	121	304,000	183	713,000
<b>Total<sup>1</sup></b> . . . . .	9,458	\$32,529,000	19,040	\$73,140,000

<sup>1</sup> Includes beneficiaries whose state of residence was unknown.

NOTE.--Detail may not add to totals due to rounding.

Data is partly estimated.

**Table C5.--Beneficiaries and selected averages for benefit year 2006-2007 unemployment, by age and sex**

Age on birthday in 2006	Number of beneficiaries				Average per beneficiary		
	Total	Female	Qualified employees	Per 100 qualified employees	Compensable days of unemployment	Daily benefit	Amount of benefits for year
<b>Under 25</b> .....	162	6	5,700	3	58	\$55.99	\$3,235
<b>25 to 29</b> .....	763	40	16,300	5	54	56.67	3,083
<b>30 to 34</b> .....	1,213	65	22,800	5	59	56.64	3,315
<b>35 to 39</b> .....	1,450	106	27,200	5	59	56.61	3,345
<b>40 to 44</b> .....	1,261	96	25,500	5	60	56.45	3,409
<b>45 to 49</b> .....	1,278	130	33,800	4	62	56.28	3,511
<b>50 to 54</b> .....	1,357	104	49,600	3	64	56.10	3,617
<b>55 to 59</b> .....	1,254	90	47,200	3	61	56.02	3,427
<b>60 to 64</b> .....	625	43	18,600	3	61	55.51	3,373
<b>65 to 69</b> .....	80	4	2,600	3	57	55.42	3,136
<b>70 and older</b> .....	15	1	400	4	59	47.16	2,799
<b>ALL BENEFICIARIES</b>							
<b>Male</b> .....	8,773	.....	228,500	4	59	\$56.30	\$3,333
<b>Female</b> .....	685	685	21,200	3	76	\$56.15	\$4,241
<b>Total</b> <sup>1</sup> .....	9,458	685	250,200	4	60	\$56.29	\$3,398

<sup>1</sup> Includes employees whose sex and/or age was not reported.

NOTE.-- Beneficiary figures based on payments made in the year, regardless of the benefit year for which payment was made. Qualified employees for 2006-2007 benefit year are those qualified on the basis of 2005 compensation.

**Table C6.--Beneficiaries and selected averages for benefit year 2006-2007 sickness, by age and sex**

Age on birthday in 2006	Number of beneficiaries				Average per beneficiary		
	Total	Female	Qualified employees	Per 100 qualified employees	Compensable days of unemployment	Daily benefit	Amount of benefits for year
<b>Under 25.....</b>	86	9	5,700	2	53	\$56.81	\$2,988
<b>25 to 29.....</b>	614	99	16,300	4	53	56.76	3,022
<b>30 to 34.....</b>	1,200	177	22,800	5	58	56.92	3,297
<b>35 to 39.....</b>	1,629	243	27,200	6	62	56.73	3,524
<b>40 to 44.....</b>	1,646	260	25,500	6	63	56.79	3,552
<b>45 to 49.....</b>	2,016	268	33,800	6	65	56.77	3,685
<b>50 to 54.....</b>	3,806	375	49,600	8	71	56.80	4,039
<b>55 to 59.....</b>	4,683	364	47,200	10	70	57.02	3,991
<b>60 to 64.....</b>	2,911	232	18,600	16	72	56.88	4,094
<b>65 to 69.....</b>	408	55	2,600	16	63	55.78	3,525
<b>70 and older.....</b>	41	6	400	10	54	48.84	2,623
<b>ALL BENEFICIARIES</b>							
<b>Male.....</b>	16,952	.....	228,500	7	67	\$56.87	\$3,825
<b>Female.....</b>	2,088	2,088	21,200	10	66	\$56.52	\$3,725
<b>Total<sup>1</sup>.....</b>	19,040	2,088	250,200	8	67	\$56.83	\$3,814

<sup>1</sup> Includes employees whose sex and/or age was not reported.

NOTE.-- Beneficiary figures based on payments made in the year, regardless of the benefit year for which payment was made. Qualified employees for 2006-2007 benefit year are those qualified on the basis of 2005 compensation.

**Table C7.--Beneficiaries and average compensable days for benefit year 2006-2007 sickness, by type of sickness**

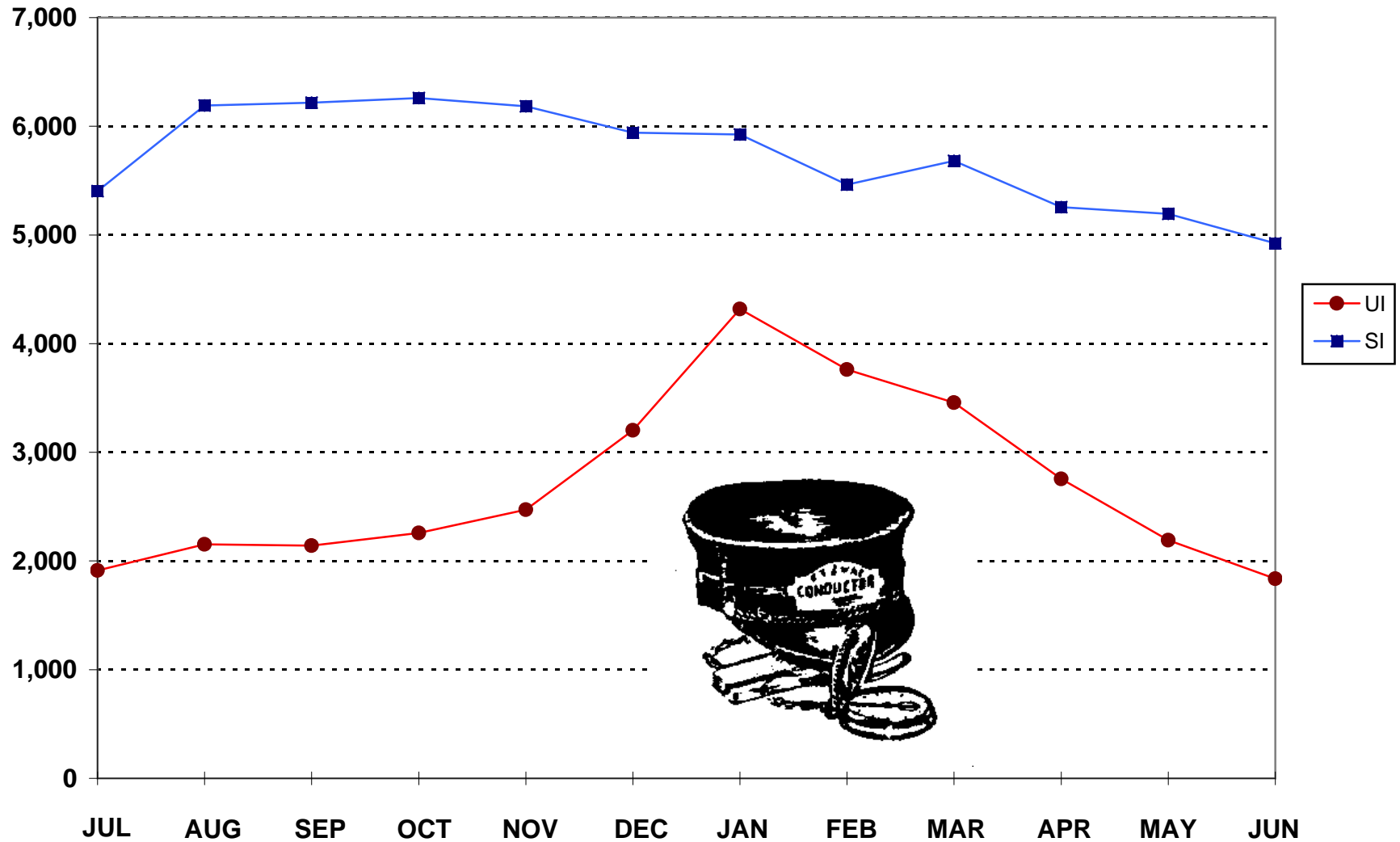
International list no.	Type of sickness	Beneficiaries	Average compensable days of sickness
001-139	Infective and parasitic diseases .....	82	60
140-239	Neoplasms.....	993	65
240-279	Endocrine, nutritional and metabolic diseases and immunity disorders.....	260	68
280-289	Diseases of the blood and blood forming organs.....	21	71
290-319	Mental disorders.....	2,118	73
320-389	Diseases of the nervous system and sense organs.....	1,054	67
390-459	Diseases of the circulatory system.....	1,561	64
460-519	Diseases of the respiratory system.....	472	55
520-579	Diseases of the digestive system.....	1,222	34
580-629	Diseases of the genitourinary system.....	188	53
630-679	Pregnancy, childbirth, and the puerperium, total <sup>1</sup> .....	277	48
680-709	Diseases of the skin and subcutaneous tissue.....	180	44
710-739	Diseases of the musculoskeletal system and connective tissue.....	4,189	84
740-759	Congenital anomalies.....	184	47
780-799	Symptoms and ill-defined conditions and perinatal morbidity and mortality.....	1,418	58
800-999	Injury and complications of poisoning.....	4,821	66
Total.....		19,040	67

<sup>1</sup> Includes normal periods of pregnancy and the puerperium in addition to morbidities included in the classifications numbered 630-679.

NOTE.--Type of sickness is determined by the first sickness for which payment was made. Classification by sickness group is in accordance with The International Classification of Diseases, Clinical Modification (ICD-9-CM), United States Government.

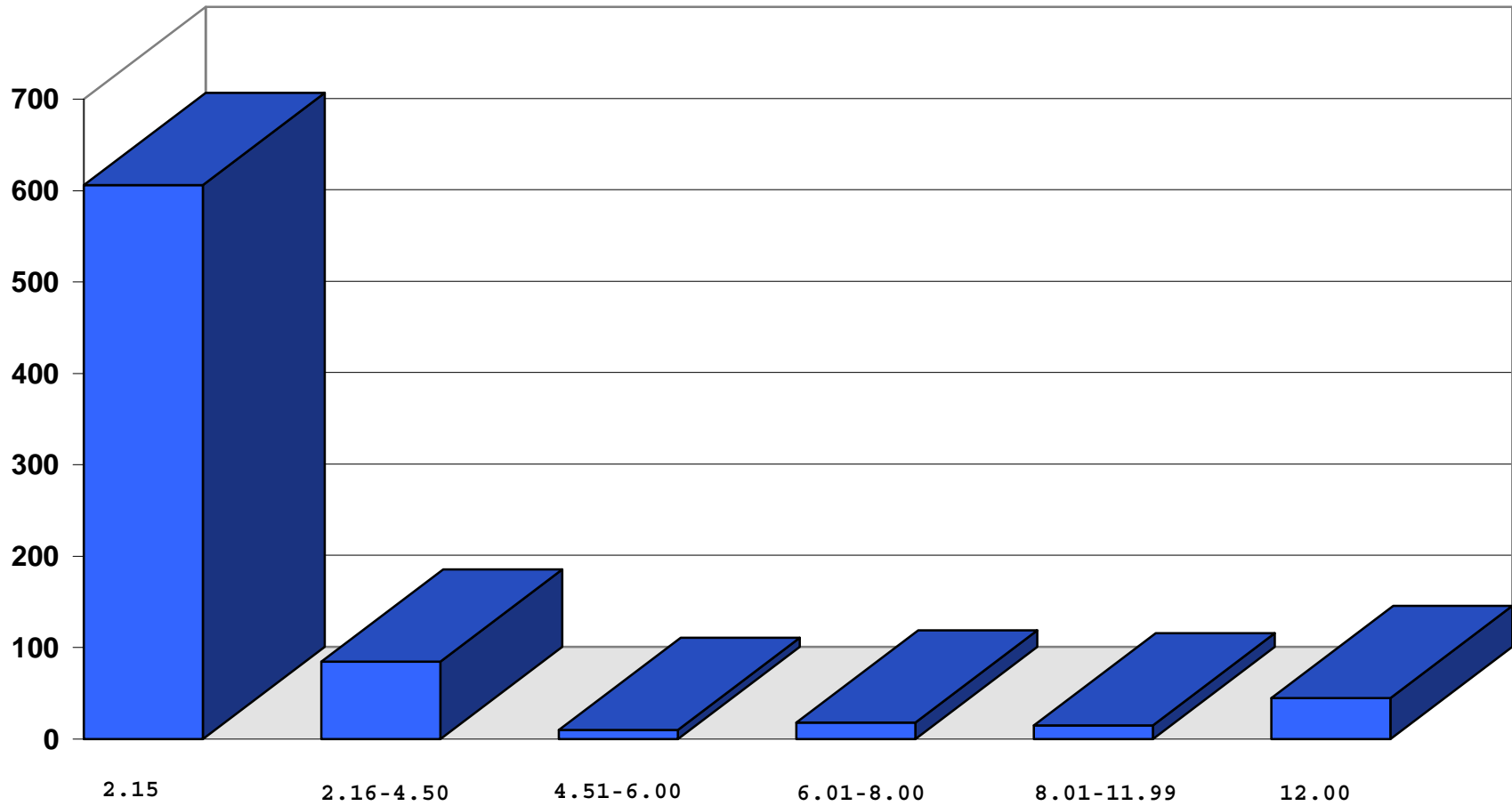
**TABLE C8. - UI & SI BENEFICIARIES  
BY MONTH FOR BENEFIT YEAR 2006-2007**

Beneficiaries



**TABLE C9. - EXPERIENCE RATING DISTRIBUTION,  
BY NUMBER OF EMPLOYERS, 2007**

**EMPLOYERS**



**CONTRIBUTION RATE (percent)**