

# Risk Assessment and Mapping for CWPP's

2008 Collaboration WUI Conference  
March 3, 2008

Jim Wolf, self employed, retired Fire Program Analyst, Oregon  
Dept of Forestry

Thanks to Kathy Lynn, Resource Innovations, c/o Institute for  
Sustainable Environment, Andy Herstrom, Vince Pile, Emmor Nile,  
Mike Schuft, Chris Bradberry, Lisa Zwart (ODF)

# Outline

- ◆ Lesson's learned
- ◆ Resources and tools
- ◆ Pitfalls
- ◆ Key Messages
- ◆ FOCUS: Large and Small Scale

# Lesson's Learned

# Regardless of Scale

“All models are wrong,  
some models are useful”

George Box



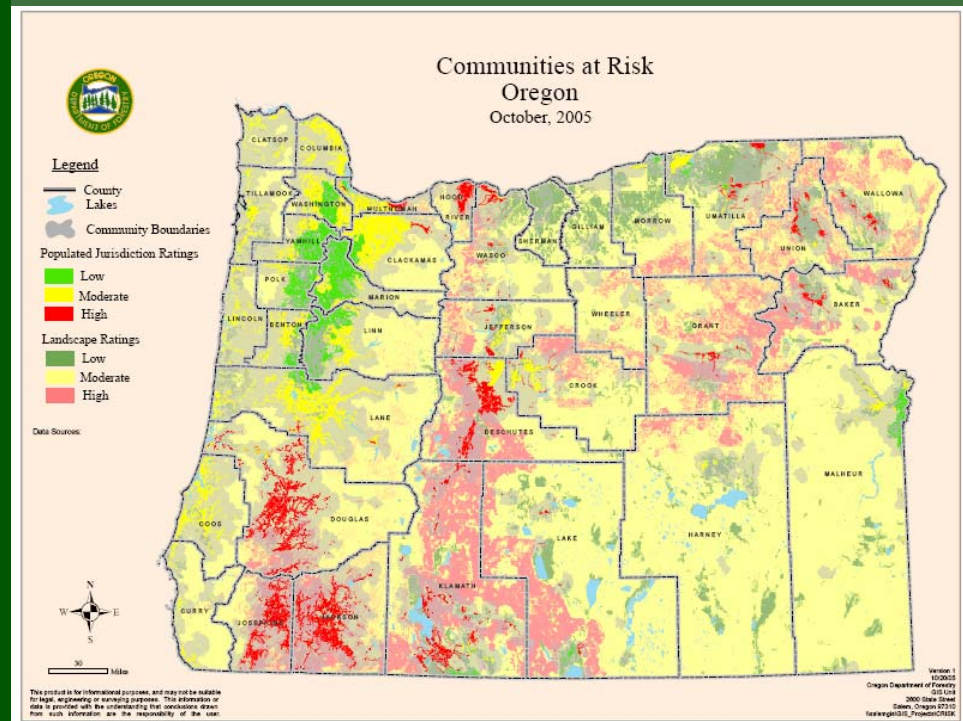
◆ Risk Assessments are a model:

- A simplification of a complex real world
- The likelihood of an event occurring X the loss if it does occur

# Scale Matters!

## ◆ Statewide/regional

- Assesses communities and large watersheds
- Limited by what data is consistent over large area
- Ignore very good local data
- Struggle with defining “community”



# Scale Matters!

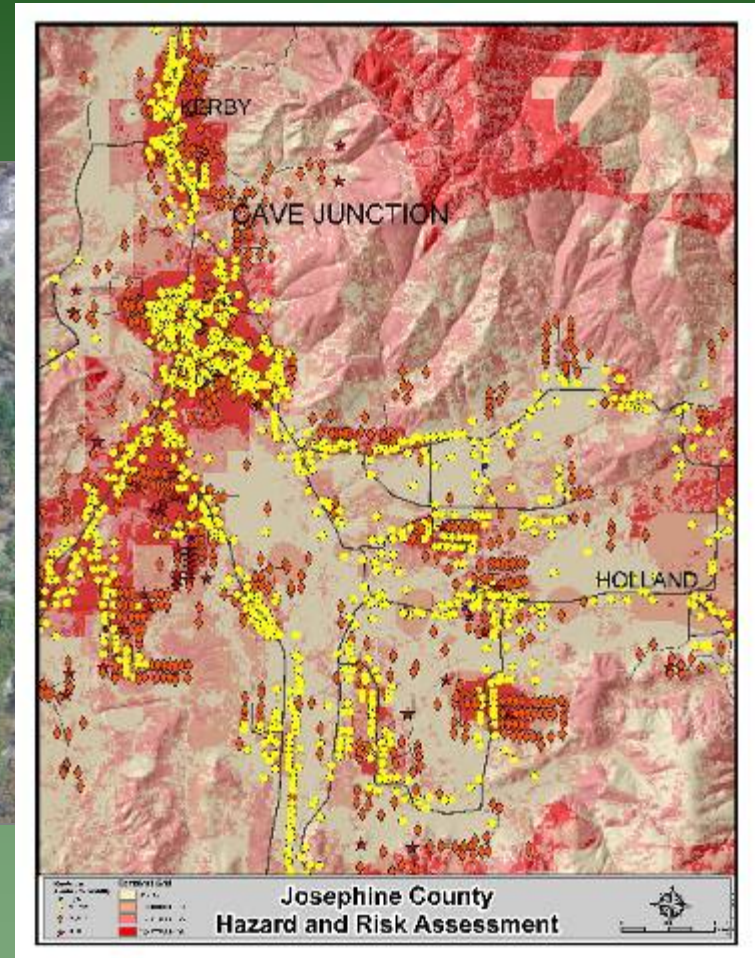
- ◆ Statewide/regional

- ◆ County

- Assesses communities, neighborhoods, project areas
- Limited by what data is consistent countywide
- Ignore very good local data

# Scale Matters!

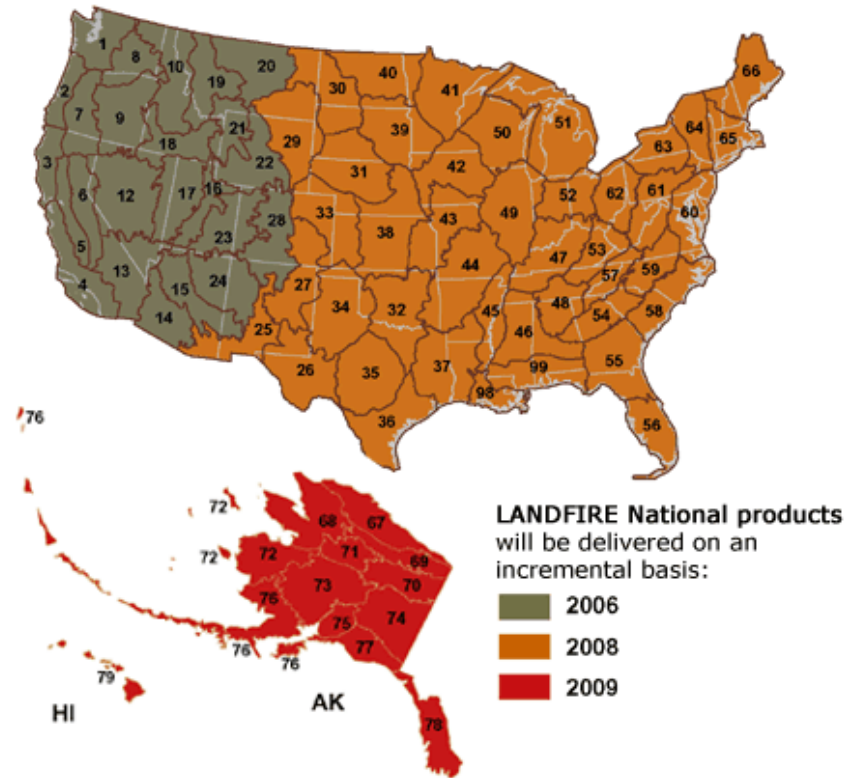
- ◆ Statewide/regional
- ◆ County
- ◆ Neighborhood
  - Assesses homes
  - Identifies specific projects
  - May not be consistent with county or state assessments



# Resources

## ◆ LandFire

- [www.landfire.gov](http://www.landfire.gov)
- Flammap
  - Flame length
  - Crown fire activity
  - Rate of spread





# Resources

- ◆ LandFire
- ◆ States
  - GIS data, GAP
  - State CAR
  - State and local fire data
- ◆ Counties
  - Tax lots, zoning...

# Resources

- ◆ LandFire
- ◆ States
- ◆ Counties
- ◆ Regional Assessment
  - Southern Wildfire Risk Assessment
  - <http://www.southernwildfirerisk.com>
  - West-Wide Assessment



# Resources

- ◆ LandFire
- ◆ States
- ◆ Counties
- ◆ Regional
- ◆ Federal fire data
  - <http://fam.nwcg.gov/fam-web/>



# Resources

- ◆ LandFire
- ◆ States
- ◆ Counties
- ◆ Regional
- ◆ Federal fire data
- ◆ Census

— [www.census.gov](http://www.census.gov)



# Resources

- ◆ LandFire
- ◆ States
- ◆ Counties
- ◆ Regional
- ◆ Federal fire data
- ◆ Census

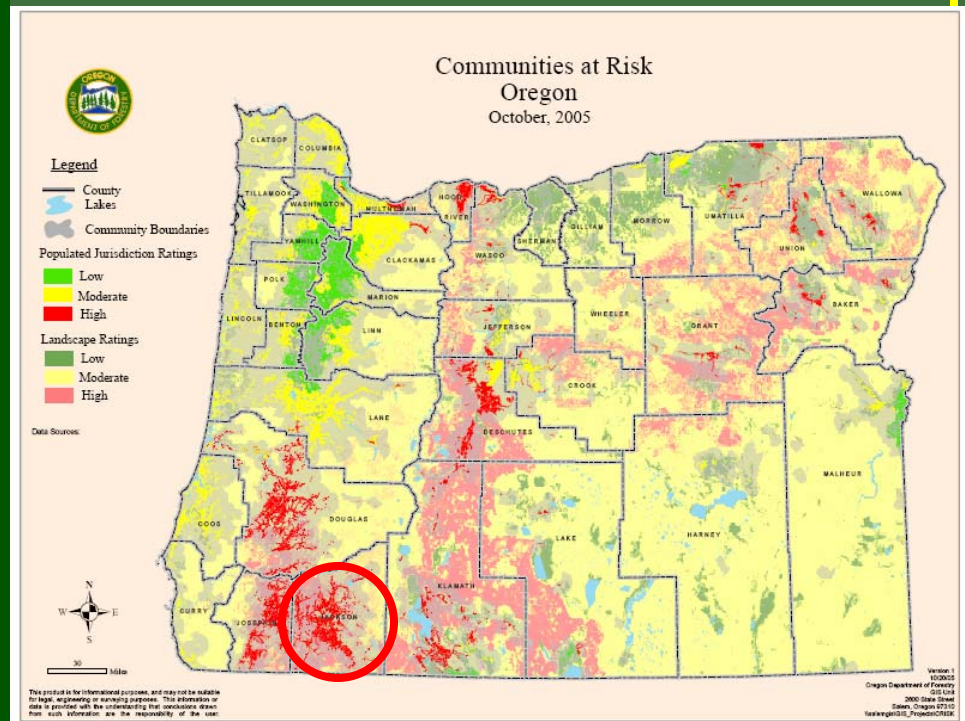
## ◆ Silvis Lab

[www.silvis.forest.wisc.edu/projects/WUI\\_Main.asp](http://www.silvis.forest.wisc.edu/projects/WUI_Main.asp)



# Pitfalls

- ◆ Trying to fit a large scale assessment to the local community
  - Redefine the assessment thresholds



# Pitfalls

- ◆ Trying to fit a large scale assessment to the local community (continued)
  - LandFire
    - Even though 30-meter cell size, not intended for community/neighborhood
    - Non-Burn Ag class includes pasture and grass
  - Census and GAP
    - Line locations not accurate at small scale

# Pitfalls

- ◆ Trying to fit a large scale assessment to the local community
- ◆ Inconsistent data

- ◆ Avoid the temptation
- ◆ Examples:
  - Input from community & neighborhood mtg
  - Local assessments
  - Fire district records
  - Combining large and small scale data



# Pitfalls

- ◆ Trying to fit a large scale assessment to the local community
- ◆ Inconsistent data
- ◆ Mission creep

- ◆ Remember – what is useful?

# Key Messages

- ◆ Keep assessment useful!
  - Consider social-economic data



# Key Messages

- ◆ Keep assessment useful!
- ◆ Watch out for mission creep!



# Key Messages

- ◆ Keep assessment useful!
- ◆ Watch out for mission creep!
- ◆ Just because you can, doesn't mean you should!



# Key Messages

- ◆ Keep assessment useful!
- ◆ Watch out for mission creep!
- ◆ Just because you can, doesn't mean you should!
- ◆ Know limitations of data used



# Questions?