

SPECIMEN # 455
HPV TYPE
16

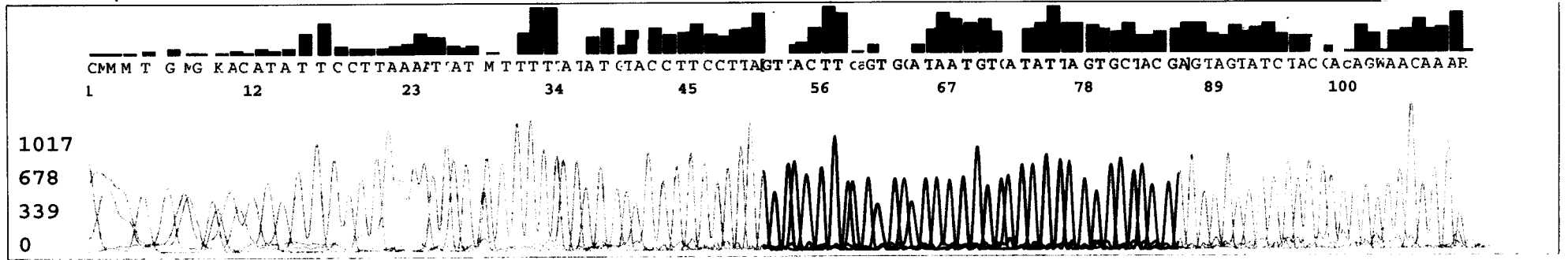
102.

>gi|110555016|gb|DQ680078.1| Human papillomavirus type 16 strain Asian
American-C variant
major capsid protein (L1) gene, complete cds
Length=1596

Score = 77.8 bits (39), Expect = 4e-14
Identities = 39/39 (100%), Gaps = 0/39 (0%)
Strand=Plus/Minus

```
Query 1      AGTAGATATGGCAGCACATAATGACATATTTGTACTGCG 39
          |||
Sbjct 1128   AGTAGATATGGCAGCACATAATGACATATTTGTACTGCG 1090
```

SPECIMEN # 457
HPV TYPE 58



SPECIMEN # 457
HPV TYPE
58

>gi|90109956|gb|DQ431189.1| Human papillomavirus type 58 isolate DF03
major capsid protein
L1 gene, partial cds
Length=409

Score = 71.9 bits (36), Expect = 2e-12
Identities = 36/36 (100%), Gaps = 0/36 (0%)
Strand=Plus/Minus

```
Query 1  GTTACTTCAGTGCATAATGTCATATTAGTGCTACGA 36
          |||
Sbjct 81  GTTACTTCAGTGCATAATGTCATATTAGTGCTACGA 46
```

S/N G:6 A:12 T:13 C:12

KB.bcp

KB 1.2 Cap:3

HPV_2006-09-27_003

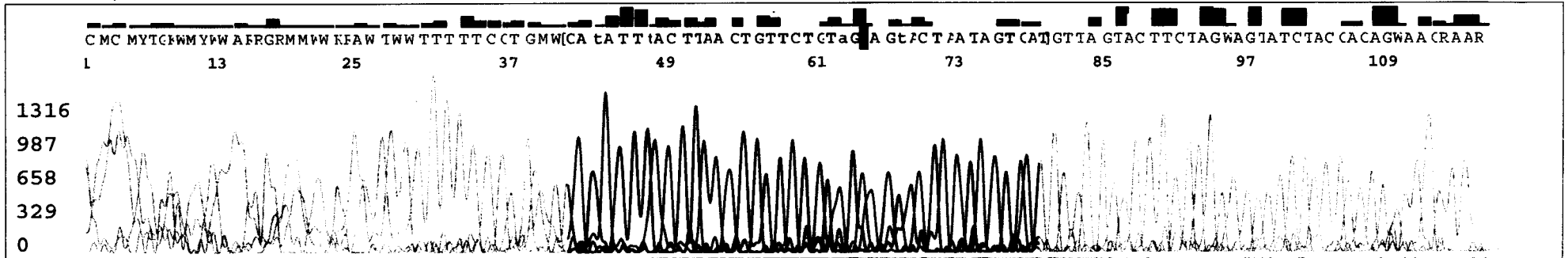
3

KB_3130_POP7_BDTv1.mob

Pts 2074 to 3422 Pk1 Loc:2074

Version 5.2.0 HISQV Bases: 21

SPECIMEN # 471
HPV TYPE
56



SPECIMEN # 471
HPV TYPE 56

253.

>gi|70698531|gb|DQ007187.1| Human papillomavirus type 56 isolate
BR5868 L1 (L1) gene, partial
cds
Length=391

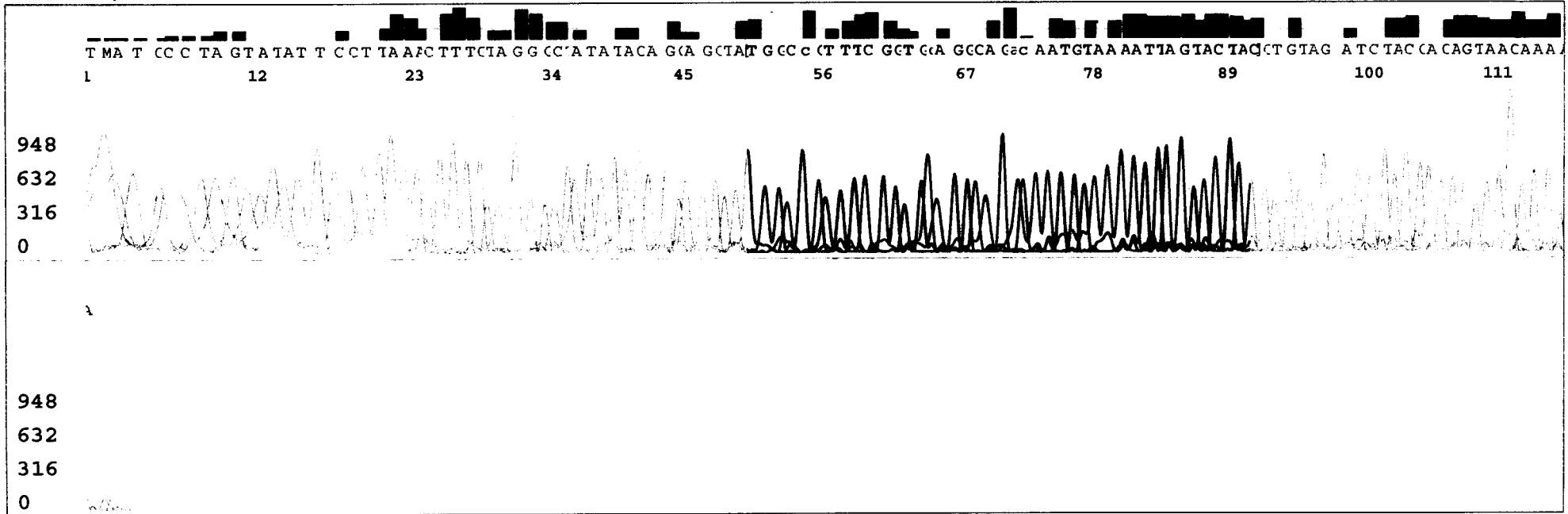
Score = 73.1 bits (36), Expect = 1e-12
Identities = 39/40 (97%), Gaps = 0/40 (0%)
Strand=Plus/Minus

Query	1	CATATTTACTTAACTGTTCTGTAGRAGTACTAATAGTCAT	40
Sbjct	57	CATATTTACTTAACTGTTCTGTAGCAGTACTAATAGTCAT	18

S/N G:37 A:78 T:70 C:73
KB.bcp
KB 1.2 Cap:1

HPV_2006-09-15_001
25
KB_3130_POP7_BDTv1.mob
Pts 1866 to 3207 Pk1 Loc:1866
Version 5.2.0 HISQV Bases: 60

SPECIMEN # 473
HPV TYPE
70



SPECIMEN # 473
HPV TYPE
70

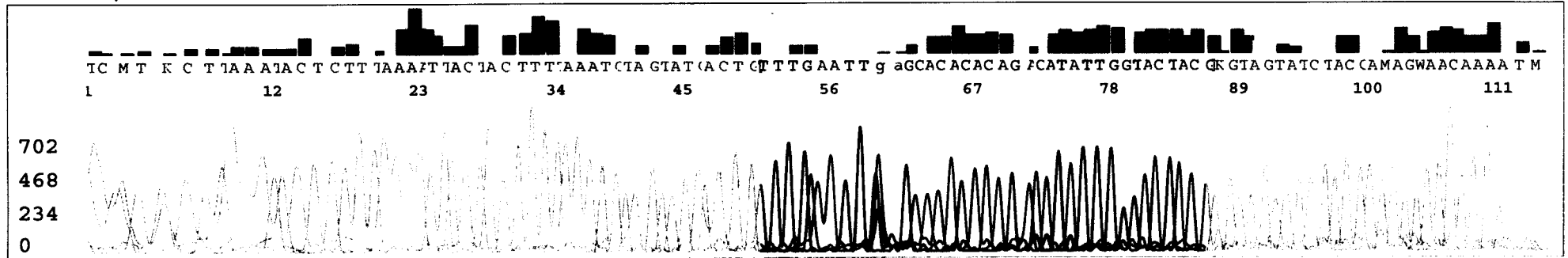
473.

>gi|1345087|gb|U22461.1|HPU22461 Human papillomavirus type 70 E6
protein (E6), E7 protein (E7),
and L1 protein (L1) genes, complete cds
Length=3283

Score = 83.8 bits (42), Expect = 7e-16
Identities = 42/42 (100%), Gaps = 0/42 (0%)
Strand=Plus/Minus

Query	1	TGGCCGTTTCGGTGCAGGCAGACAATGTAAAATTAGTACTAC	42
Sbjct	1079	TGGCCGTTTCGGTGCAGGCAGACAATGTAAAATTAGTACTAC	1038

SPECIMEN # 475
HPV TYPE
31



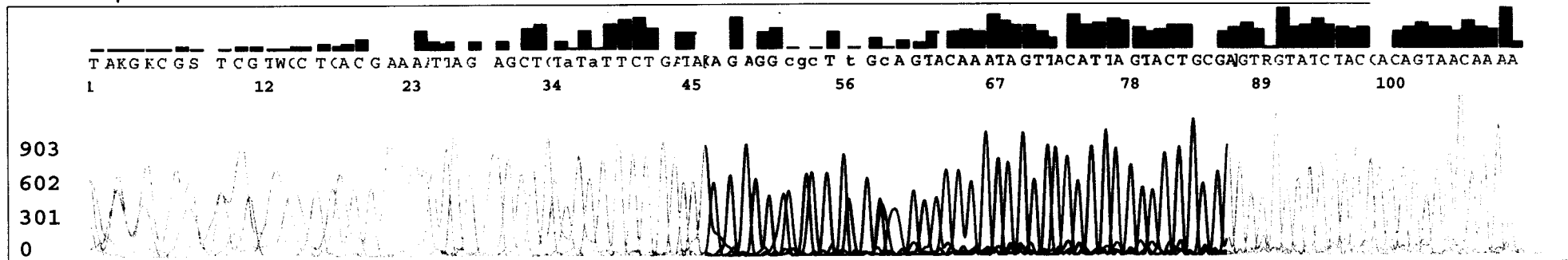
SPECIMEN # 475
HPV TYPE
31

137.

>gi|66933451|gb|DQ057333.1| Human papillomavirus type 31 isolate
BR1692 L1 protein (L1) gene,
partial cds
Length=351

Score = 54.0 bits (27), Expect = 5e-07
Identities = 27/27 (100%), Gaps = 0/27 (0%)
Strand=Plus/Minus

Query	10	AGCACACACAGACATATTGGTACTACG	36
Sbjct	43	AGCACACACAGACATATTGGTACTACG	17



SPECIMEN # 478
HPV TYPE
72

125.

>gi|1491683|emb|X94164.1|HPVT72ELG Human papillomavirus type 72 E6,
E7, E1A, E1B, E2, E4, L2, and
L1 genes
Length=7988

Score = 91.7 bits (46), Expect = 3e-18
Identities = 46/46 (100%), Gaps = 0/46 (0%)
Strand=Plus/Minus

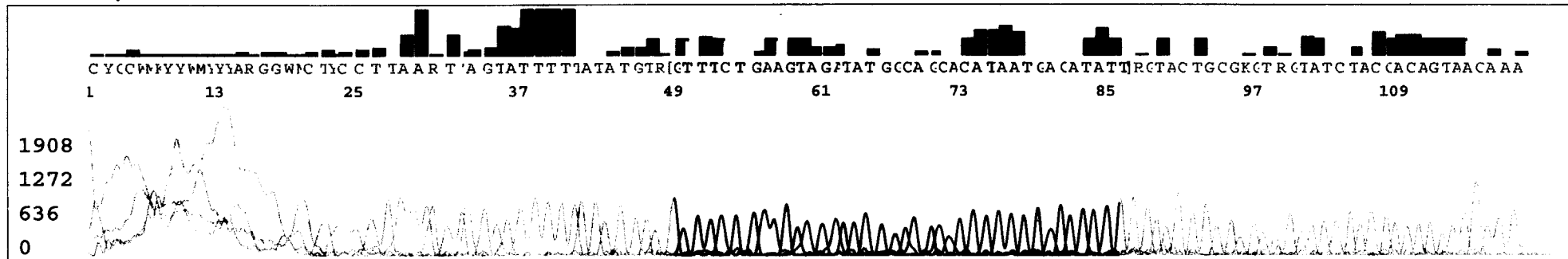
```
Query 1      GATACAGAGGACGCTGTGGCAGTACAAATAGTTACATTAGTACTGC 46
          |||
Sbjct 6850   GATACAGAGGACGCTGTGGCAGTACAAATAGTTACATTAGTACTGC 6805
```


SPECIMEN # 479
HPV TYPE
54

>gi|1017782|gb|U37488.1|HPU37488 ■ Human papillomavirus type 54,
complete genome
Length=7759

Score = 69.9 bits (35), Expect = 8e-12
Identities = 35/35 (100%), Gaps = 0/35 (0%)
Strand=Plus/Minus

```
Query 1      ATGCTGTAGCACACAATGTTAGGTTAGTACTACGG 35
            |||
Sbjct 6640   ATGCTGTAGCACACAATGTTAGGTTAGTACTACGG 6606
```



SPECIMEN # 490
HPV TYPE

16

490.

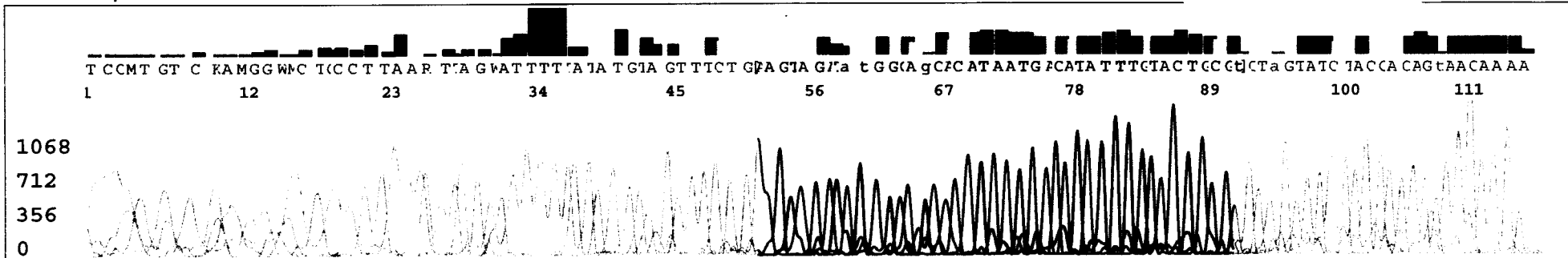
>gi|90192460|gb|DQ422772.1| Human papillomavirus type 16 clone 60 L1
protein (L1) gene, partial
cds
Length=290

Score = 75.8 bits (38), Expect = 1e-13
Identities = 38/38 (100%), Gaps = 0/38 (0%)
Strand=Plus/Minus

```
Query 1  GTTTCTGAAGTAGATATGGCAGCACATAATGACATATT 38
          |||
Sbjct 59  GTTTCTGAAGTAGATATGGCAGCACATAATGACATATT 22
```

SPECIMEN # 491
HPV TYPE

16



SPECIMEN # 491
HPV TYPE

16

491.

>gi|91178178|gb|DQ448200.1| Human papillomavirus type 16 isolate IR-
ESO-HPV-16/19 L1 (L1)
gene, partial cds
Length=141

Score = 81.8 bits (41), Expect = 3e-15
Identities = 41/41 (100%), Gaps = 0/41 (0%)
Strand=Plus/Minus

```
Query 1  AAGTAGATATGGCAGCACATAATGACATATTTGTACTGCGT 41
          |||
Sbjct 62  AAGTAGATATGGCAGCACATAATGACATATTTGTACTGCGT 22
```