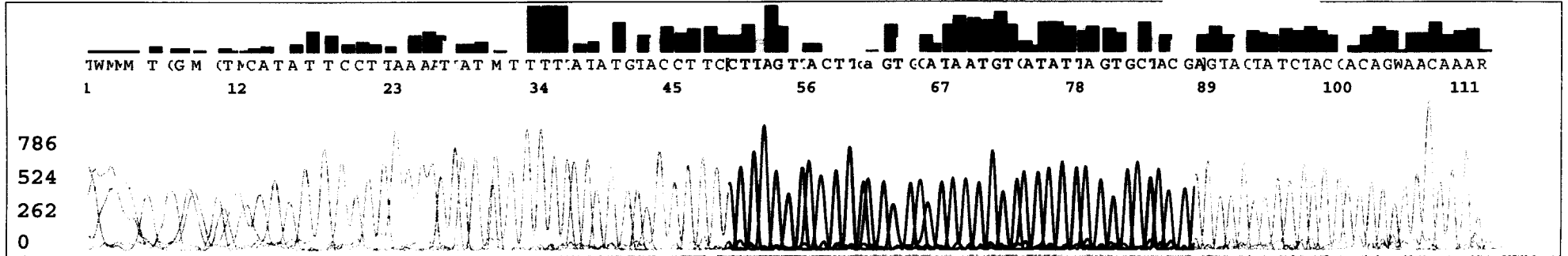


SPECIMEN # 303
HPV TYPE 58

36
T
T
10
J6



SPECIMEN # 303
HPV TYPE
58

>gi|66933437|gb|DQ057326.1| Human papillomavirus type 58 isolate
HK2178 L1 protein (L1) gene,
partial cds
Length=421

Score = 79.8 bits (40), Expect = 1e-14
Identities = 40/40 (100%), Gaps = 0/40 (0%)
Strand=Plus/Minus

```
Query 1 CTTAGTTACTTCAGTGCATAATGTCATATTAGTGCTACGA 40
        ||||||||||||||||||||||||||||||||||||
Sbjct 93 CTTAGTTACTTCAGTGCATAATGTCATATTAGTGCTACGA 54
```

S/N G:16 A:27 T:31 C:28

KB.bcp

KB 1.2 Cap:2

HPV_2006-09-15_002

26

KB_3130_POP7_BDTv1.mob

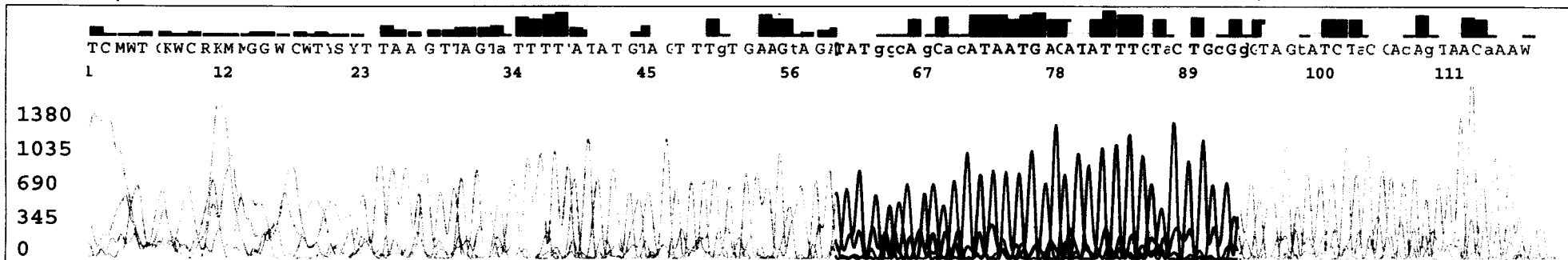
Pts 1853 to 3144 Pk1 Loc:1853

Version 5.2.0 HISQV Bases: 34

SPECIMEN # 305

HPV TYPE

16 mixed



SPECIMEN # 305
HPV TYPE

16

>gi|110555016|gb|DQ680078.1| Human papillomavirus type 16 strain Asian
American-C variant
major capsid protein (L1) gene, complete cds
Length=1596

Score = 65.9 bits (33), Expect = 1e-10
Identities = 33/33 (100%), Gaps = 0/33 (0%)
Strand=Plus/Minus

```
Query 1      TATGGCAGCACATAATGACATATTTGTACTGCG 33
          |||
Sbjct 1122   TATGGCAGCACATAATGACATATTTGTACTGCG 1090
```

S/N G:62 A:106 T:145 C:69

KB.bcp

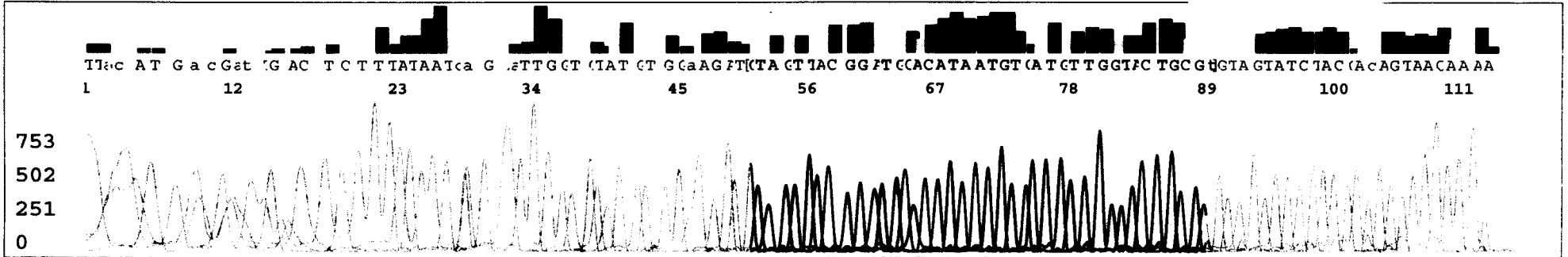
KB 1.2 Cap:3

KB_3130_POP7_BDTv1.mob

Pts 1961 to 3250 Pk1 Loc:1961

Version 5.2.0 HISQV Bases: 56 #61

6



SPECIMEN # 307
HPV TYPE

6

307.

>gi|25272068|gb|AF548810.1| ■ Human papillomavirus type 6 isolate 1 L1
(L1) gene, partial cds
Length=138

Score = 77.8 bits (39), Expect = 4e-14
Identities = 39/39 (100%), Gaps = 0/39 (0%)
Strand=Plus/Minus

```
Query 1 GTAGTTACGGATGCACATAATGTCATGTTGGTACTGCGT 39
      |||
Sbjct 62 GTAGTTACGGATGCACATAATGTCATGTTGGTACTGCGT 24
```

S/N G:16 A:28 T:30 C:22
KB.bcp
KB 1.2 Cap:3

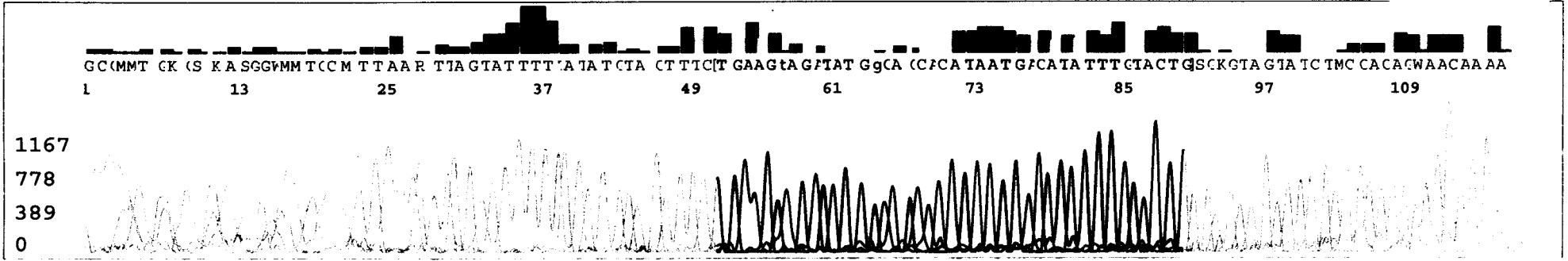
HPV_2006-10-19_003

36

KB_3130_POP7_BDTv1.mob
Pts 1919 to 3250 Pk1 Loc:1919
Version 5.2.0 HiSQV Bases: 40

SPECIMEN # 308
HPV TYPE
16

6
T
T
0
6



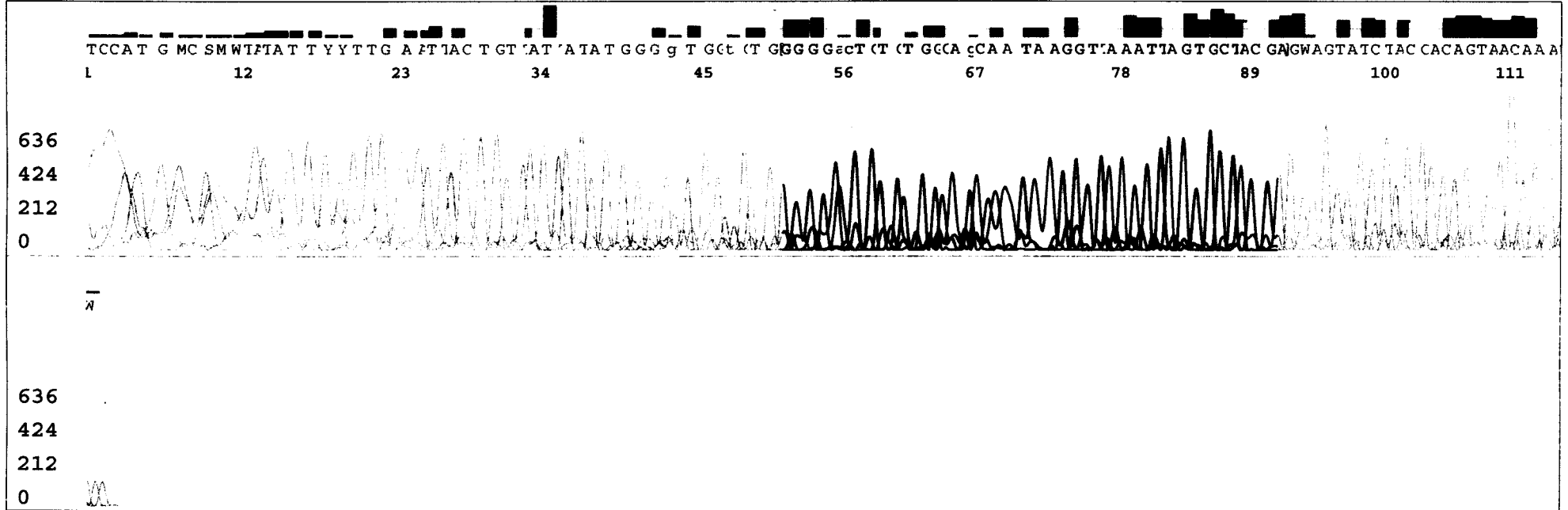
SPECIMEN # 308
HPV TYPE
16

36.

>gi|110555016|gb|DQ680078.1| Human papillomavirus type 16 strain Asian
American-C variant
major capsid protein (L1) gene, complete cds
Length=1596

Score = 79.8 bits (40), Expect = 1e-14
Identities = 40/40 (100%), Gaps = 0/40 (0%)
Strand=Plus/Minus

```
Query 1      TGAAGTAGATATGGCAGCACATAATGACATATTTGACTG 40
          |||
Sbjct 1131   TGAAGTAGATATGGCAGCACATAATGACATATTTGACTG 1092
```

SPECIMEN # 310
HPV TYPE
40

310.

>gi|333183|gb|M96293.1|PPHL1DQ Human papillomavirus type 40 L1 gene,
partial cds
Length=132

Score = 46.1 bits (23), Expect = 1e-04
Identities = 23/23 (100%), Gaps = 0/23 (0%)
Strand=Plus/Minus

```
Query 19   ATAAGGTTAAATTAGTGCTACGA 41
          |||
Sbjct 130  ATAAGGTTAAATTAGTGCTACGA 108
```

S/N G:48 A:87 T:116 C:88

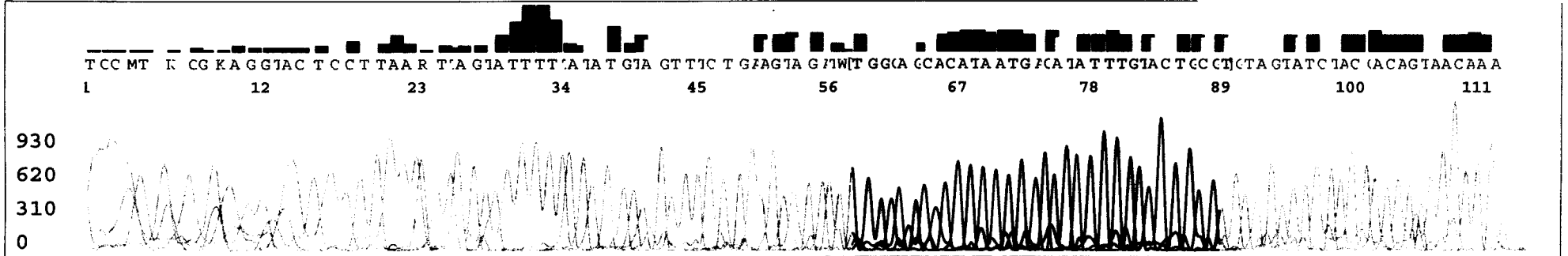
KB.bcp

KB 1.2 Cap:4

KB_3130_POP7_BDTv1.mob

Pts 1927 to 3210 Pk1 Loc:1927

Version 5.2.0 HISQV Bases: 47



SPECIMEN # 312
HPV TYPE

16

>gi|110555016|gb|DQ680078.1| Human papillomavirus type 16 strain Asian
American-C variant
major capsid protein (L1) gene, complete cds
Length=1596

Score = 63.9 bits (32), Expect = 4e-10
Identities = 32/32 (100%), Gaps = 0/32 (0%)
Strand=Plus/Minus

```
Query 1 TGGCAGCACATAATGACATATTTGTACTGCGT 32
      |||
Sbjct 1120 TGGCAGCACATAATGACATATTTGTACTGCGT 1089
```

S/N G:264 A:413 T:677 C:389

KB.bcp

KB 1.2 Cap:2

HPV_2006-08-05_002

42

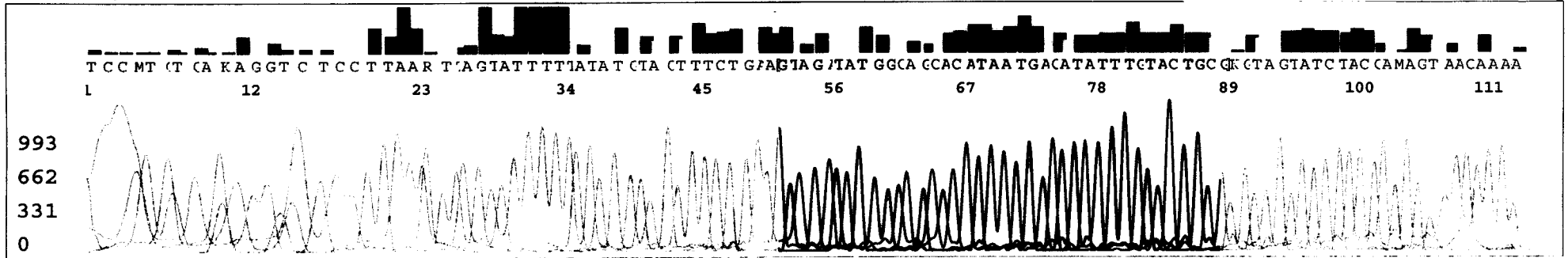
KB_3130_POP7_BDTv1.mob

Pts 1755 to 2961 Pk1 Loc:1755

Version 5.2.0 HISQV Bases: 61

SPECIMEN # 323
HPV TYPE

16



SPECIMEN # 323
HPV TYPE
16

323.

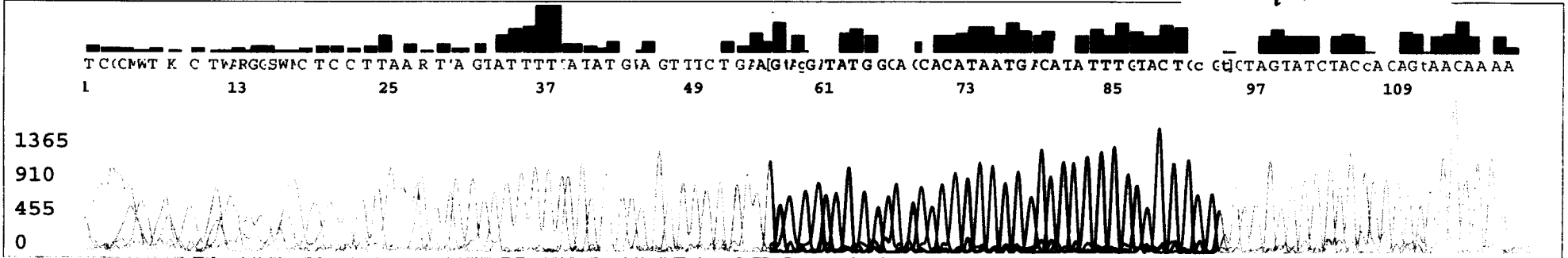
>gi|110555016|gb|DQ680078.1| Human papillomavirus type 16 strain Asian
American-C variant
major capsid protein (L1) gene, complete cds
Length=1596

Score = 75.8 bits (38), Expect = 5e-12
Identities = 38/38 (100%), Gaps = 0/38 (0%)
Strand=Plus/Minus

```
Query 1 GTAGATATGGCAGCACATAATGACATATTTGTACTGCG 38
        |||||||||||||||||||||||||||||||||||
Sbjct 1127 GTAGATATGGCAGCACATAATGACATATTTGTACTGCG 1090
```

SPECIMEN # 326
HPV TYPE

16



SPECIMEN # 326
HPV TYPE 14

>gi|110555016|gb|DQ680078.1| Human papillomavirus type 16 strain Asian
American-C variant
major capsid protein (L1) gene, complete cds
Length=1596

Score = 71.9 bits (36), Expect = 3e-12
Identities = 36/36 (100%), Gaps = 0/36 (0%)
Strand=Plus/Minus

```
Query 5 GATATGGCAGCACATAATGACATATTTGTACTGCGT 40
      |||
Sbjct 1124 GATATGGCAGCACATAATGACATATTTGTACTGCGT 1089
```


SPECIMEN #
HPV TYPE

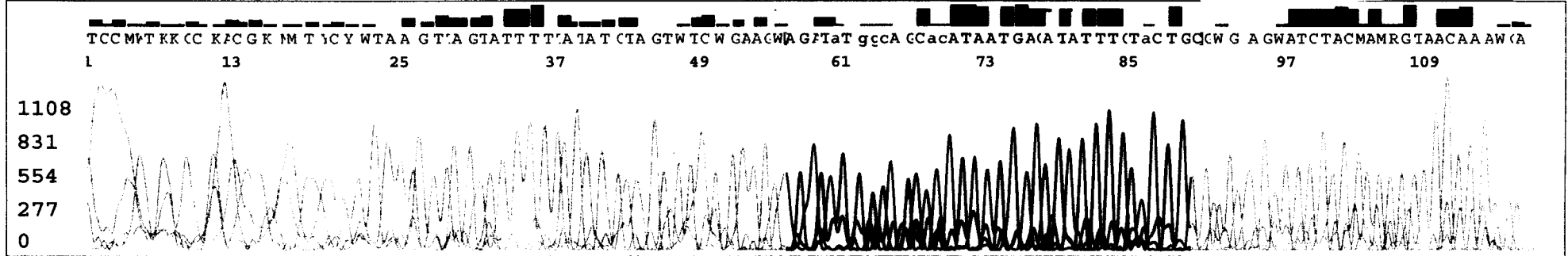
327

16

S/N G:19 A:36 T:40 C:34

KB.bcp

KB 1.2 Cap:1



SPECIMEN # 327
HPV TYPE

16

>[gi|110555016|gb|DQ680078.1|](#) Human papillomavirus type 16 strain Asian
American-C variant
major capsid protein (L1) gene, complete cds
Length=1596

Score = 69.9 bits (35), Expect = 8e-12
Identities = 35/35 (100%), Gaps = 0/35 (0%)
Strand=Plus/Minus

```
Query 1      AGATATGGCAGCACATAATGACATATTTGTACTGC 35
          |||
Sbjct 1125   AGATATGGCAGCACATAATGACATATTTGTACTGC 1091
```

S/N G:12 A:17 T:23 C:19

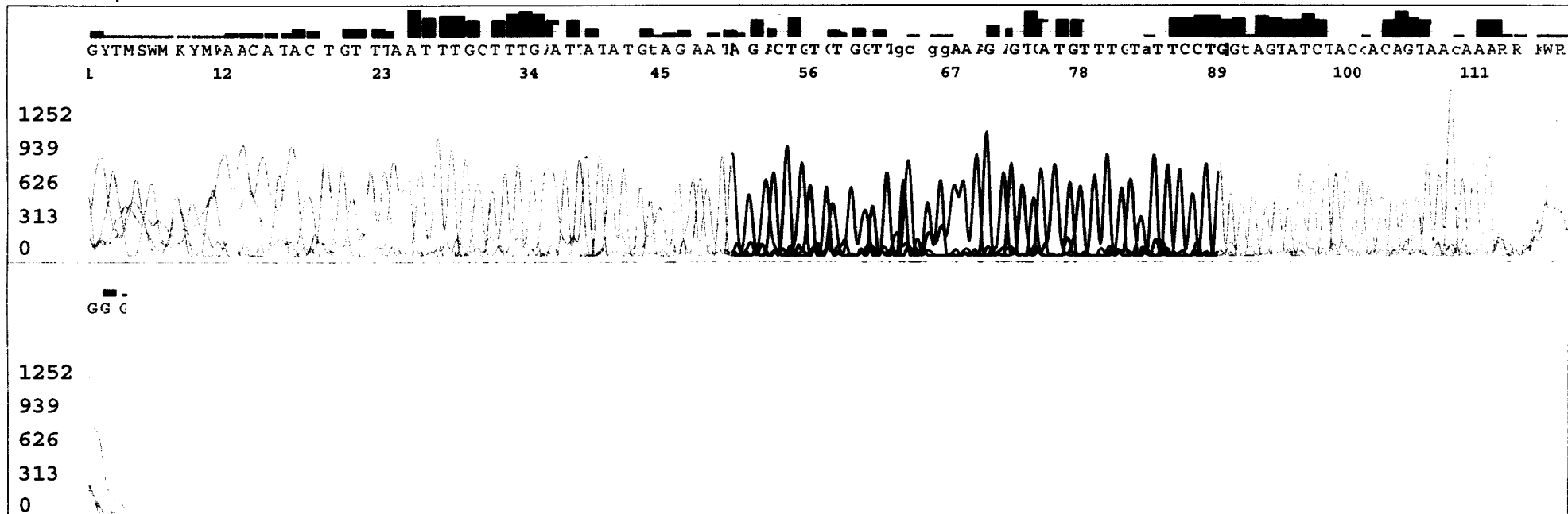
KB_3130_POP7_BDTv1.mob

KB.bcp

Pts 1947 to 3297 Pk1 Loc:1947

KB 1.2 Cap:4

Version 5.2.0 HiSQV Bases: 37



SPECIMEN # 335
HPV TYPE

53

335.

>gi|70698498|gb|DQ007181.1| Human papillomavirus type 53 isolate

ED1064 L1 (L1) gene, partial

cds

Length=391

Score = 79.8 bits (40), Expect = 1e-14

Identities = 40/40 (100%), Gaps = 0/40 (0%)

Strand=Plus/Minus

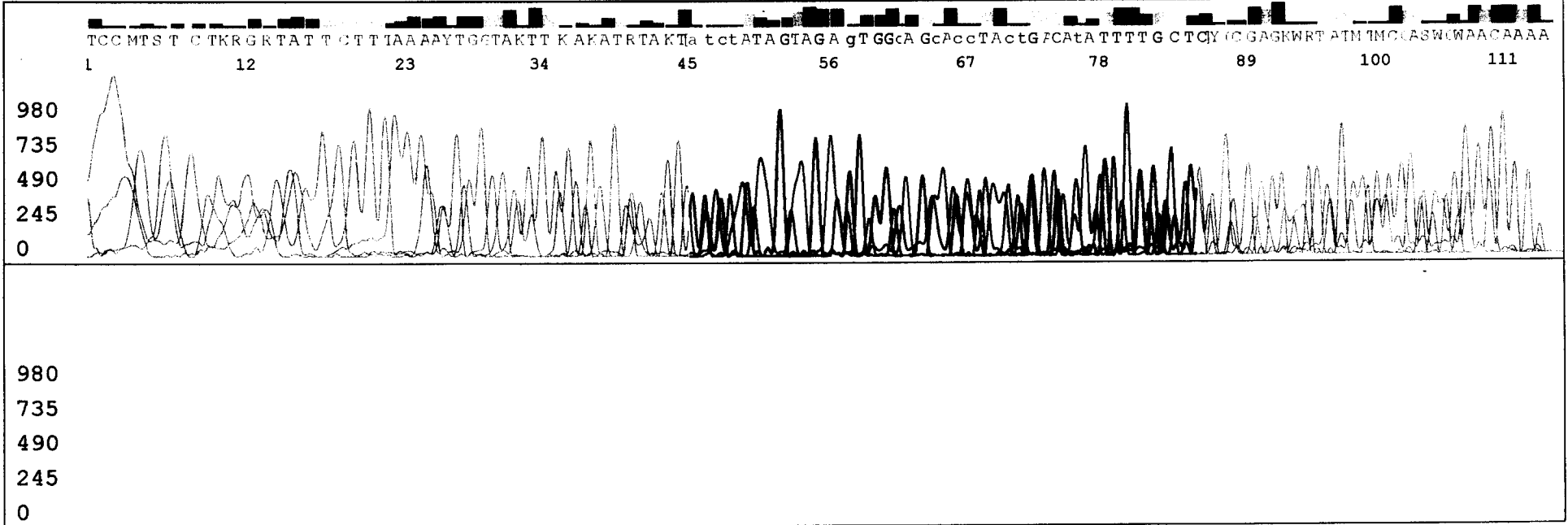
```
Query 1  AGACTGTGTGGTTGCGGAAAGAGTCATGTTTGTATTCCTG 40
          |||
Sbjct 99  AGACTGTGTGGTTGCGGAAAGAGTCATGTTTGTATTCCTG 60
```

SPECIMEN # 337
HPV TYPE *mixed*
(not 6, 11, 16, 18)

S/N G:43 A:84 T:103 C:83

KB.bcp

KB 1.2 Cap:1

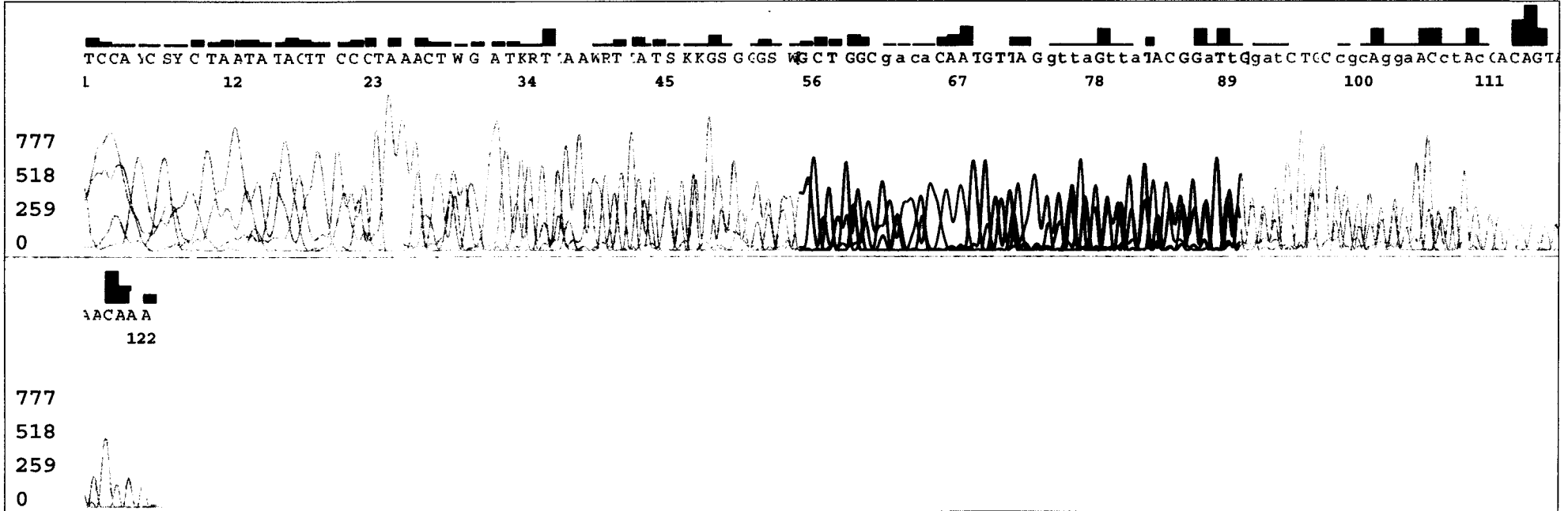


S/N G:64 A:113 T:128 C:107

KB.bcp

KB 1.2 Cap:3

7
KB_3130_POP7_BDTv1.mob
Pts 1930 to 3315 Pk1 Loc:1930
Version 5.2.0 HISQV Bases: 20



SPECIMEN # 346
HPV TYPE 54

>gi|1017782|gb|U37488.1|HPU37488 ■ Human papillomavirus type 54,
complete genome
Length=7759

Score = 36.2 bits (18), Expect = 0.11
Identities = 18/18 (100%), Gaps = 0/18 (0%)
Strand=Plus/Minus

```
Query 8      ACACAATGTTAGGTTAGT 25
          |||
Sbjct 6630   ACACAATGTTAGGTTAGT 6613
```

S/N G:75 A:122 T:114 C:90

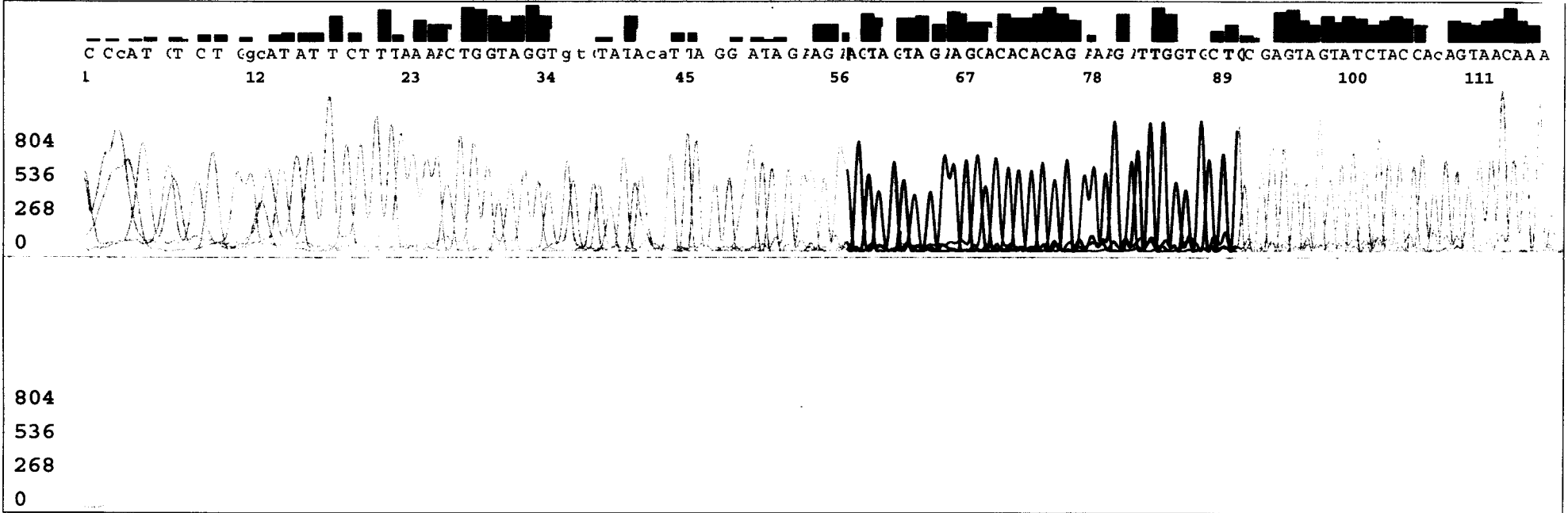
KB.bcp

KB 1.2 Cap:4

KB_3130_POP7_BDTv1.mob

Pts 2018 to 3378 Pk1 Loc:2018

Version 5.2.0 HISQV Bases: 59 # 21



SPECIMEN # 352
HPV TYPE 59

>gi|94490337|gb|DQ486471.1| Human papillomavirus type 59 isolate Bsb-
28 major capsid protein
L1 gene, partial cds
Length=455

Score = 67.9 bits (34), Expect = 3e-11
Identities = 34/34 (100%), Gaps = 0/34 (0%)
Strand=Plus/Minus

```
Query 1 AGTAGTAGAAGCACACACAGAAAGATTGGTGCTG 34
      |||
Sbjct 102 AGTAGTAGAAGCACACACAGAAAGATTGGTGCTG 69
```

S/N G:14 A:41 T:44 C:39
KB.bcp
KB 1.2 Cap:3

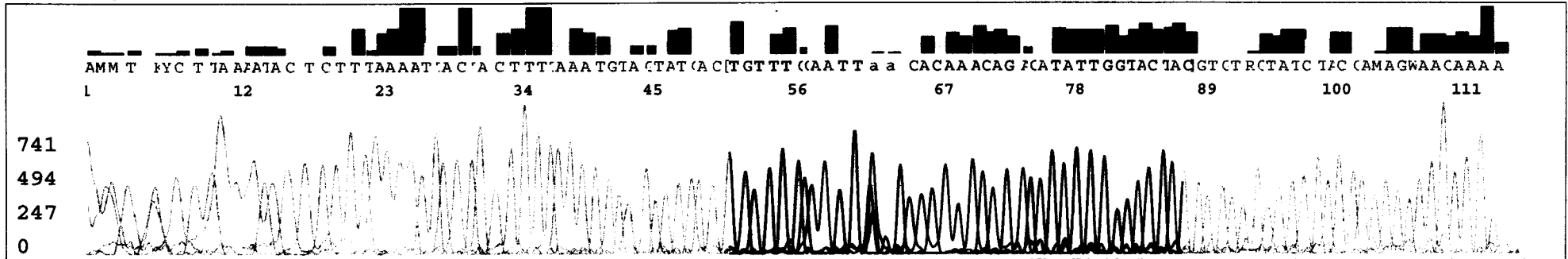
HPV_2006-09-18_003

19

KB_3130_POP7_BDTv1.mob
Pts 1898 to 3177 Pk1 Loc:1898
Version 5.2.0 HISQV Bases: 56

SPECIMEN # 353
HPV TYPE

31



SPECIMEN # 353
HPV TYPE
31

353.

>gi|66933447|gb|DQ057331.1| Human papillomavirus type 31 isolate
TL2069 L1 protein (L1) gene,
partial cds
Length=351

Score = 48.1 bits (24), Expect = 3e-05
Identities = 24/24 (100%), Gaps = 0/24 (0%)
Strand=Plus/Minus

Query	14	CACAAACAGACATATTGGTACTAC	37
Sbjct	41	CACAAACAGACATATTGGTACTAC	18

S/N G:20 A:52 T:51 C:40

KB_3130_POP7_BDTv1.mob

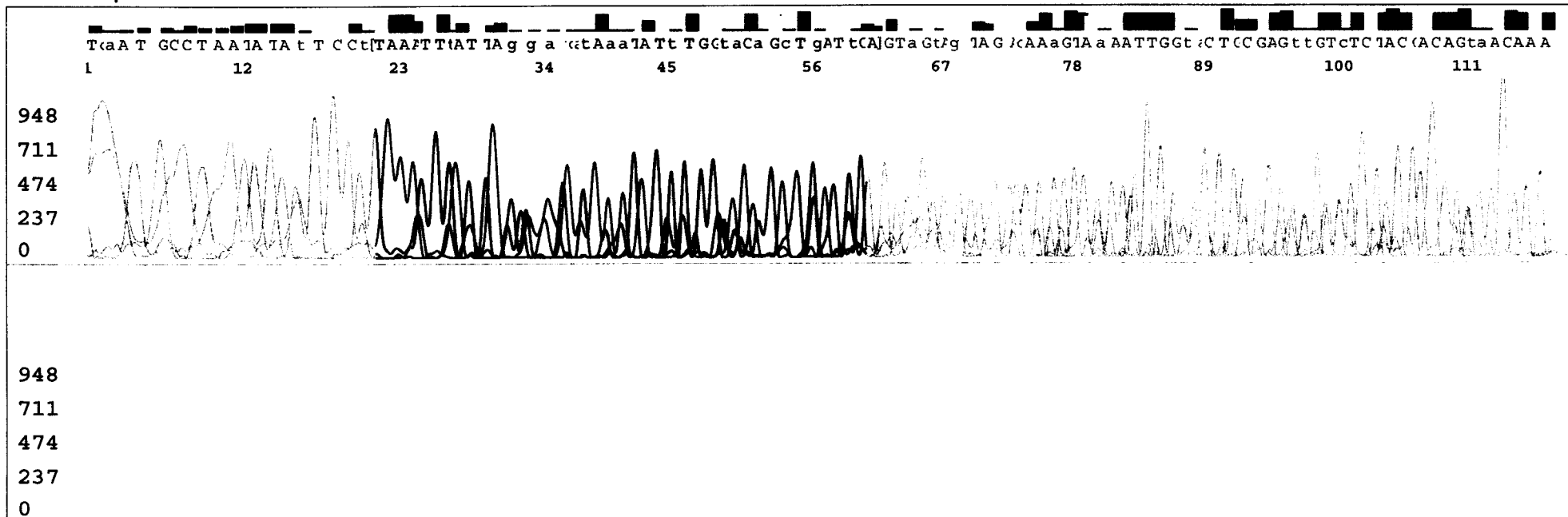
KB.bcp

Pts 1937 to 3252 Pk1 Loc:1937

KB 1.2 Cap:1

Version 5.2.0 HISQV Bases: 30

68



SPECIMEN # 354
HPV TYPE
68

354.

>gi|52353088|emb|AJ831568.1| Human papillomavirus type 68 proviral
partial L1 gene for major
capsid protein, isolate CY27
Length=455

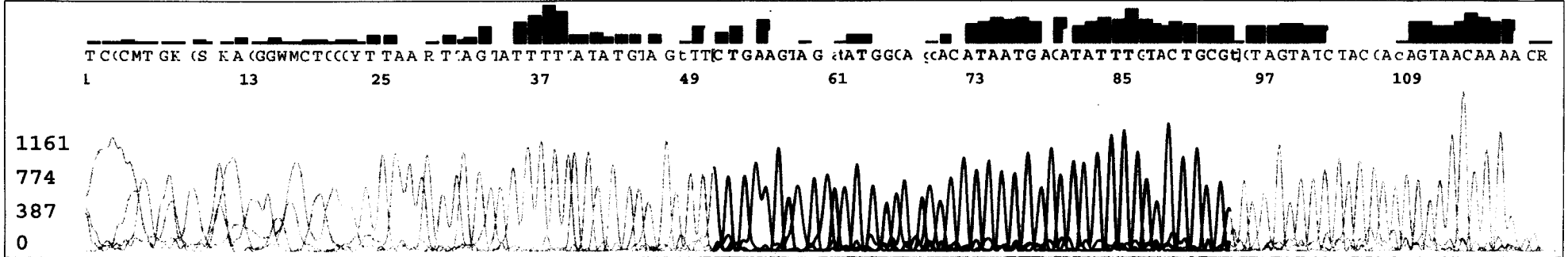
Score = 81.8 bits (41), Expect = 3e-15
Identities = 41/41 (100%), Gaps = 0/41 (0%)
Strand=Plus/Minus

```
Query 1 TAAATTTATTAGGATCATAAAATATTTGGTACAGCTGATTCA 41  
|||||  
Sbjct 139 TAAATTTATTAGGATCATAAAATATTTGGTACAGCTGATTCA 99
```

S/N G:17 A:30 T:40 C:28
KB.bcp
KB 1.2 Cap:2

HPV_2006-10-07_002
2-vin069330
KB_3130_POP7_BDTv1.mob
Pts 2003 to 3362 Pk1 Loc:2003
Version 5.2.0 HISQV Bases: 48

SPECIMEN # 357
HPV TYPE 16



SPECIMEN # 357
HPV TYPE

16

>gi|110555016|gb|DQ680078.1| Human papillomavirus type 16 strain Asian
American-C variant
major capsid protein (L1) gene, complete cds
Length=1596

Score = 87.7 bits (44), Expect = 5e-17
Identities = 44/44 (100%), Gaps = 0/44 (0%)
Strand=Plus/Minus

```
Query 1 CTGAAGTAGATATGGCAGCACATAATGACATATTTGTTACTGCGT 44
      |||
Sbjct 1132 CTGAAGTAGATATGGCAGCACATAATGACATATTTGTTACTGCGT 1089
```

S/N G:15 A:37 T:47 C:36

KB_3130_POP7_BDTv1.mob

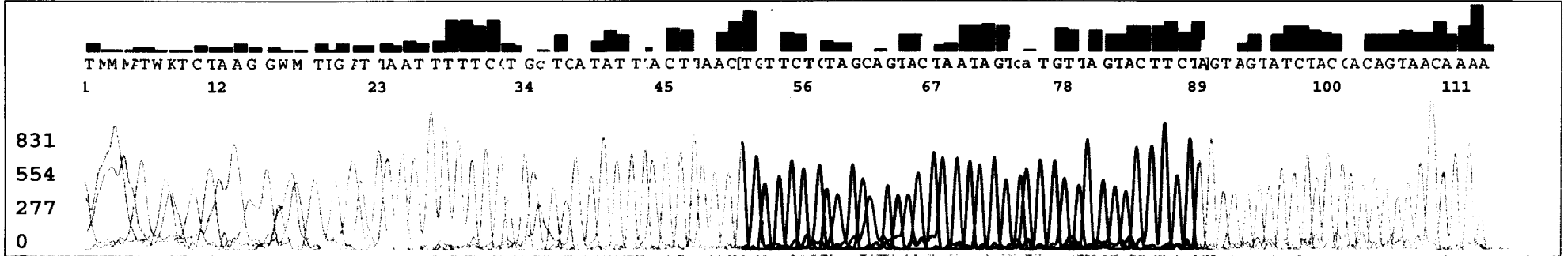
KB.bcp

Pts 1955 to 3234 Pk1 Loc:1955

KB 1.2 Cap:3

Version 5.2.0 HISQV Bases: 56

56



SPECIMEN # 358
HPV TYPE

56

358.

>gi|70698531|gb|DQ007187.1 Human papillomavirus type 56 isolate
BR5868 L1 (L1) gene, partial
cds
Length=391

Score = 77.8 bits (39), Expect = 4e-14
Identities = 39/39 (100%), Gaps = 0/39 (0%)
Strand=Plus/Minus

```
Query 1  TGTTCGTAGCAGTACTAATAGTCATGTTAGTACTTCTA 39
          |||
Sbjct 43  TGTTCGTAGCAGTACTAATAGTCATGTTAGTACTTCTA 5
```

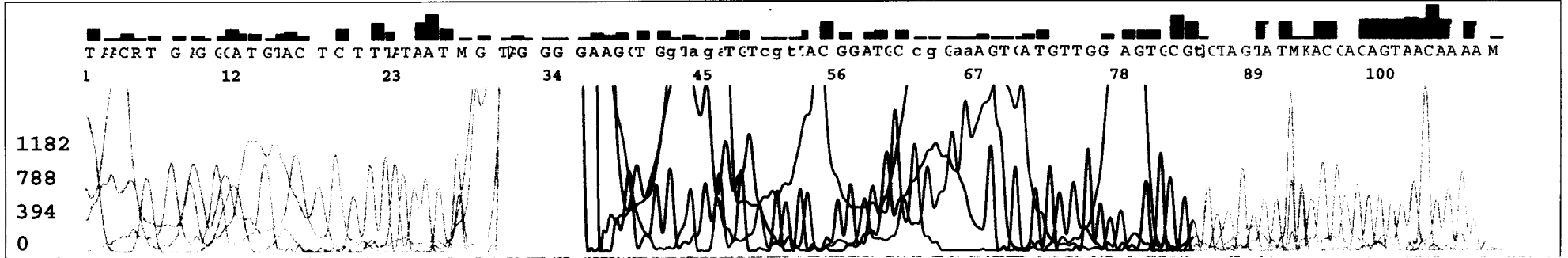
S/N G:70 A:133 T:265 C:308
KB.bcp
KB 1.2 Cap:2

HPV_2006-11-06_002

2

KB_3130_POP7_BDTv1.mob
Pts 1988 to 3282 PK1 Loc:1988
Version 5.2.0 HISQV Bases: 20

SPECIMEN # 360 mixed
HPV TYPE (not 6,11,16,18)



S/N G:14 A:25 T:28 C:20

KB.bcp

KB 1.2 Cap:3

HPV_2006-10-20_003

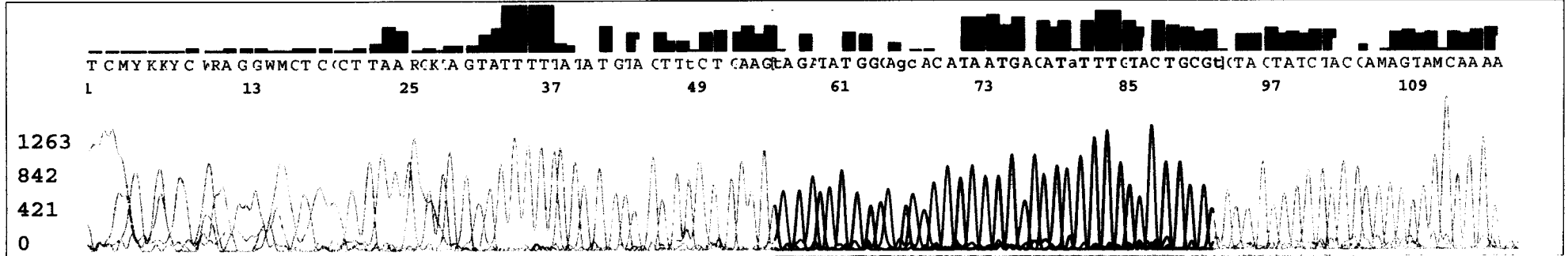
36-A

KB_3130_POP7_BDTv1.mob

Pts 1877 to 3153 Pk1 Loc:1877

Version 5.2.0 HISQV Bases: 55

SPECIMEN # 365
HPV TYPE 16



SPECIMEN # 365
HPV TYPE

16

36.

>gi|110555016|gb|DQ680078.1| Human papillomavirus type 16 strain Asian
American-C variant
major capsid protein (L1) gene, complete cds
Length=1596

Score = 75.8 bits (38), Expect = 1e-13
Identities = 38/38 (100%), Gaps = 0/38 (0%)
Strand=Plus/Minus

```
Query 1 TAGATATGGCAGCACATAATGACATATTTGTACTGCGT 38
      |||
Sbjct 1126 TAGATATGGCAGCACATAATGACATATTTGTACTGCGT 1089
```

S/N G:33 A:64 T:95 C:60

KB.bcp

KB 1.2 Cap:2

HPV_2006-10-07_002

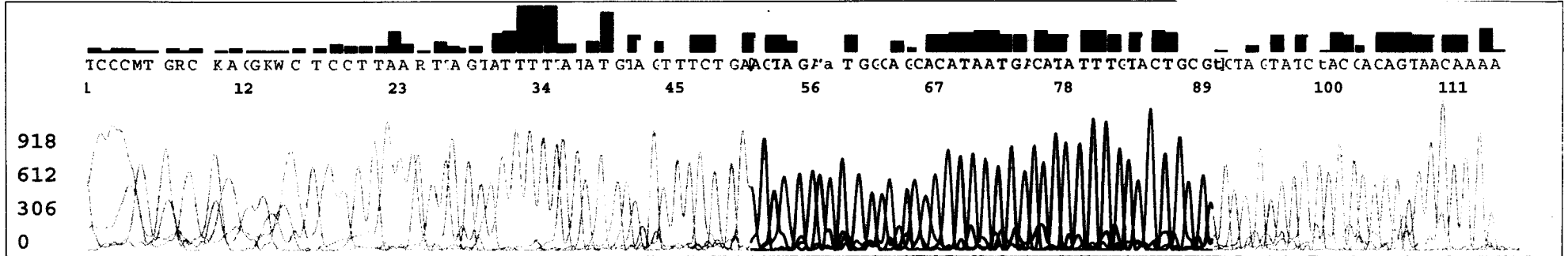
6-vin069513

KB_3130_POP7_BDTv1.mob

Pts 1978 to 3318 Pk1 Loc:1978

Version 5.2.0 HISQV Bases: 47

SPECIMEN # 367
HPV TYPE 16



SPECIMEN # 367
HPV TYPE

16

>gi|110555016|gb|DQ680078.1| Human papillomavirus type 16 strain Asian
American-C variant
major capsid protein (L1) gene, complete cds
Length=1596

Score = 79.8 bits (40), Expect = 1e-14
Identities = 40/40 (100%), Gaps = 0/40 (0%)
Strand=Plus/Minus

```
Query 1      AGTAGATATGGCAGCACATAATGACATATTTGTACTGCGT 40
           |||
Sbjct 1128    AGTAGATATGGCAGCACATAATGACATATTTGTACTGCGT 1089
```

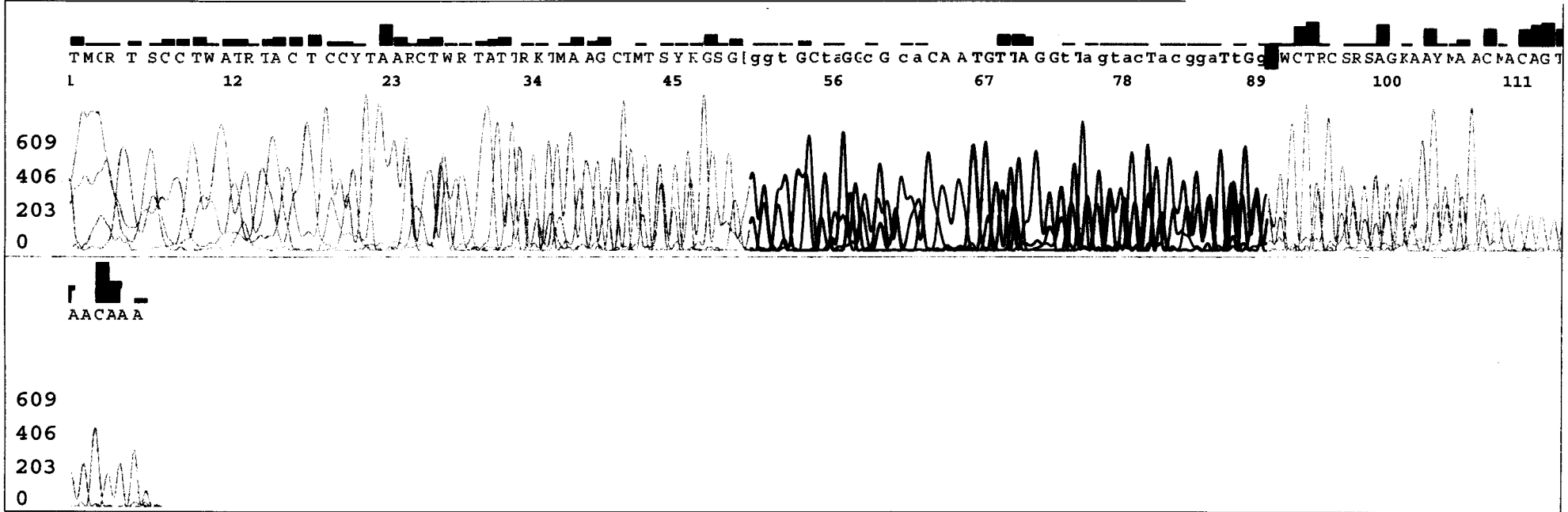
S/N G:42 A:93 T:120 C:92
KB.bcp
KB 1.2 Cap:3

HPV_2006-09-27_003

7

KB_3130_POP7_BDTv1.mob
Pts 1903 to 3282 Pk1 Loc:1903
Version 5.2.0 HISQV Bases: 15

SPECIMEN # 369
HPV TYPE
54



SPECIMEN # 369
HPV TYPE

54

>gi|1017782|gb|U37488.1|HPU37488 ■ Human papillomavirus type 54,
complete genome
Length=7759

Score = 48.1 bits (24), Expect = 4e-05
Identities = 24/24 (100%), Gaps = 0/24 (0%)
Strand=Plus/Minus

```
Query 12 CACAATGTTAGGTTAGTACTACGG 35
          |||
Sbjct 6629 CACAATGTTAGGTTAGTACTACGG 6606
```


S/N G:11 A:16 T:22 C:22

KB.bcp

KB 1.2 Cap:1

1

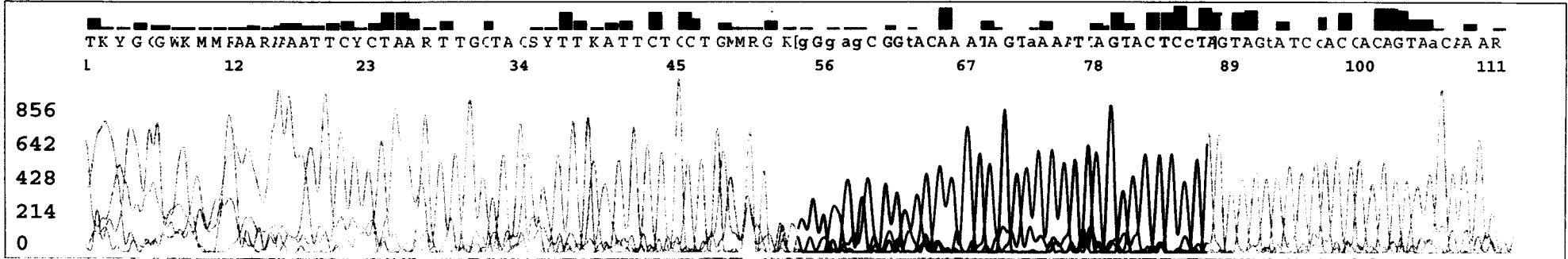
KB_3130_POP7_BDTv1.mob

Pts 1975 to 3243 Pk1 Loc:1975

Version 5.2.0 HISQV Bases: 23

SPECIMEN # 371
HPV TYPE

62



SPECIMEN # 371
HPV TYPE

62

>gi|39932599|gb|AY395706.1| Human papillomavirus type 62 isolate
Qv18091, complete genome
Length=8092

Score = 60.0 bits (30), Expect = 7e-09
Identities = 30/30 (100%), Gaps = 0/30 (0%)
Strand=Plus/Minus

```
Query 5 GCGGTACAAATAGTAAAATTAGTACTCCTA 34
      |||
Sbjct 6819 GCGGTACAAATAGTAAAATTAGTACTCCTA 6790
```

S/N G:38 A:69 T:68 C:65

KB.bcp

KB 1.2 Cap:2

HPV_2006-09-15_002

30

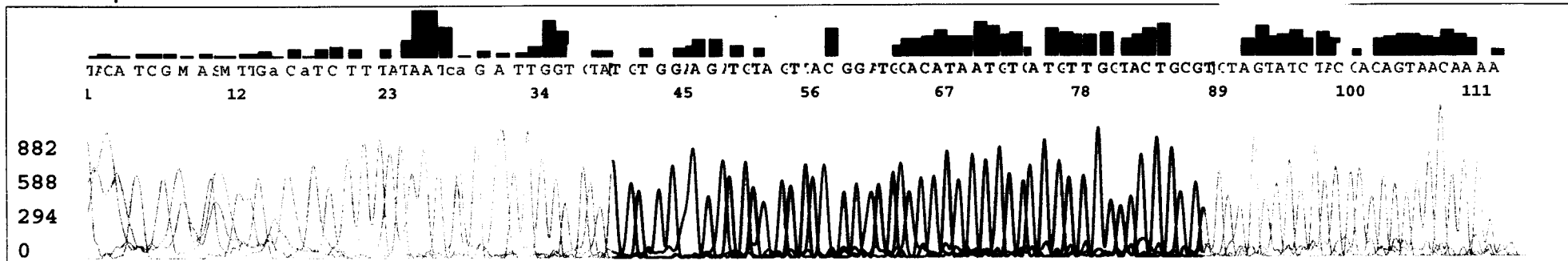
KB_3130_POP7_BDTv1.mob

Pts 1835 to 3084 Pk1 Loc:1835

Version 5.2.0 HiSQV Bases: 50

SPECIMEN # 373
HPV TYPE

6



SPECIMEN # 373
HPV TYPE
6

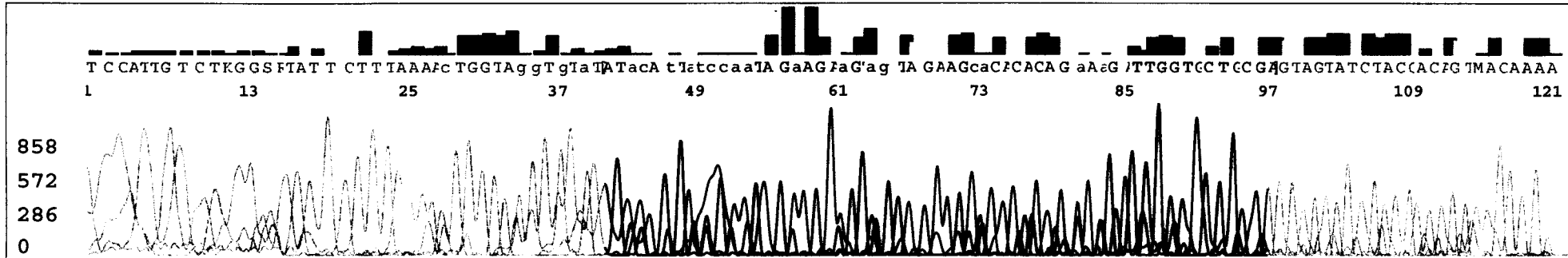
373.

>gi|25272068|gb|AF548810.1| ■ Human papillomavirus type 6 isolate 1 L1
(L1) gene, partial cds
Length=138

Score = 97.6 bits (49), Expect = 6e-20
Identities = 49/49 (100%), Gaps = 0/49 (0%)
Strand=Plus/Minus

```
Query 1 TGTGGAAGATGTAGTTACGGATGCACATAATGTCATGTTGGTACTGCGT 49
      |||
Sbjct 72 TGTGGAAGATGTAGTTACGGATGCACATAATGTCATGTTGGTACTGCGT 24
```

SPECIMEN # 374
HPV TYPE 59



SPECIMEN # 374
HPV TYPE 59

>gi|557236|emb|X77858.1|HPV59VG Human papilloma virus type 59,
complete viral genome
Length=7896

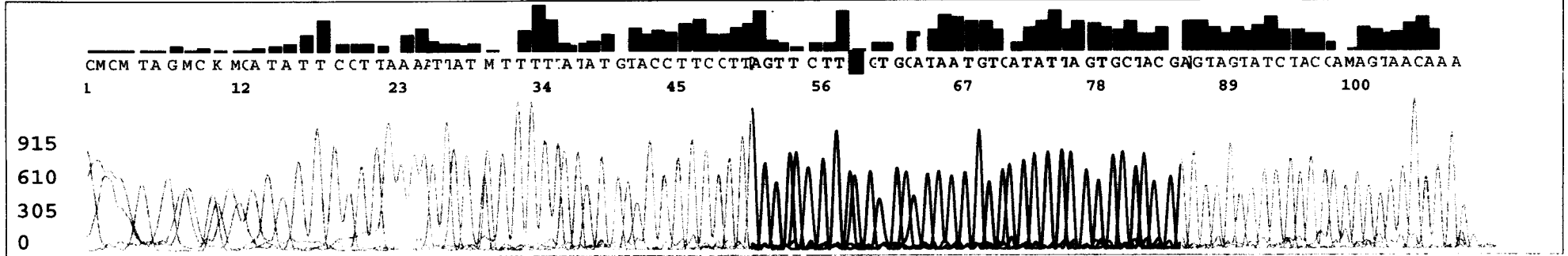
Score = 91.7 bits (46), Expect = 5e-18
Identities = 46/46 (100%), Gaps = 0/46 (0%)
Strand=Plus/Minus

```
Query 12 AATAGAAGAAGTAGTAGAAGCACACACAGAAAGATTGGTGCTGCCA 57  
          |||  
Sbjct 6661 AATAGAAGAAGTAGTAGAAGCACACACAGAAAGATTGGTGCTGCCA 6616
```

S/N G:34 A:112 T:171 C:79
KB.bcp
KB 1.2 Cap:3

HPV_2006-10-07_003
11-sm065372
KB_3130_POP7_BDTv1.mob
Pts 1966 to 3262 Pk1 Loc:1966
Version 5.2.0 HiSQV Bases: 59

SPECIMEN # 375
HPV TYPE
58



SPECIMEN # 375
HPV TYPE
58

>gi|90109956|gb|DQ431189.1| Human papillomavirus type 58 isolate DF03
major capsid protein
L1 gene, partial cds
Length=409

Score = 55.0 bits (27), Expect = 2e-07
Identities = 27/27 (100%), Gaps = 0/27 (0%)
Strand=Plus/Minus

```
Query 9 GTGCATAATGTCATATTAGTGCTACGA 35
      |||
Sbjct 72 GTGCATAATGTCATATTAGTGCTACGA 46
```

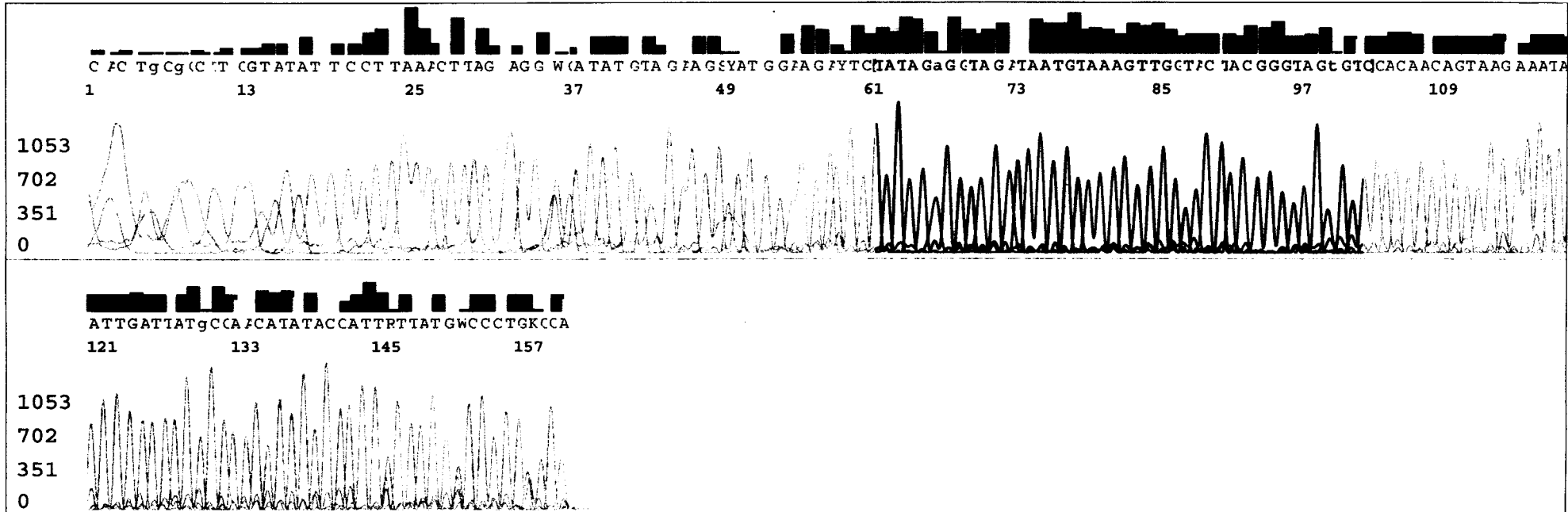

S/N G:47 A:78 T:63 C:42
KB.bcp
KB 1.2 Cap:4

HPV_2006-09-28_004

8

KB_3130_POP7_BDTv1.mob
Pts 1924 to 3744 Pk1 Loc:1924
Version 5.2.0 HISQV Bases: 96

SPECIMEN # 377
HPV TYPE
39



SPECIMEN # 377
HPV TYPE

39

>gi|1209136|gb|U45905.1|HPU45905 Human papillomavirus type 39, isolate
IS351, major capsid protein
L1 (L1) gene, partial cds
Length=455

Score = 83.8 bits (42), Expect = 7e-16
Identities = 42/42 (100%), Gaps = 0/42 (0%)
Strand=Plus/Minus

```
Query 1 TATAGAGGTAGATAATGTAAAGTTGGTACTACGGGTAGTGTC 42
      |||
Sbjct 99 TATAGAGGTAGATAATGTAAAGTTGGTACTACGGGTAGTGTC 58
```

S/N G:13 A:25 T:28 C:22

KB.bcp

KB 1.2 Cap:1

HPV_2006-10-18_001

25-ch06-4178

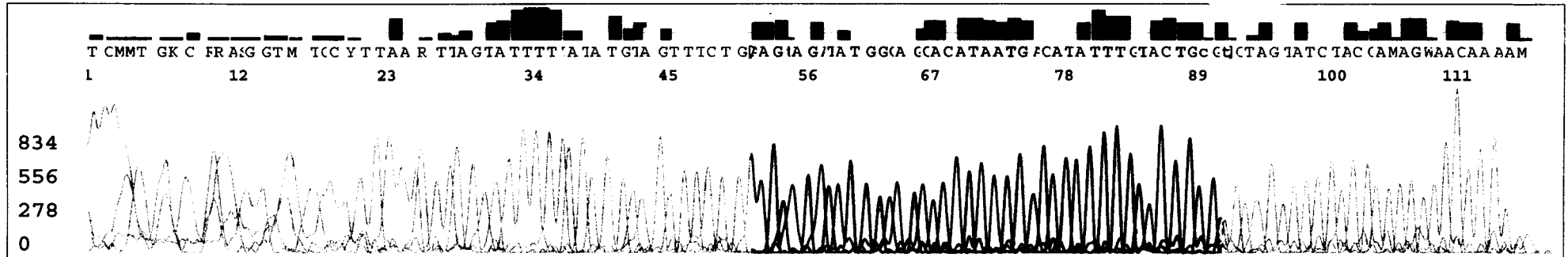
KB_3130_POP7_BDTv1.mob

Pts 1896 to 3222 Pk1 Loc:1896

Version 5.2.0 HISQV Bases: 45

SPECIMEN # 378
HPV TYPE

16



SPECIMEN # 378
HPV TYPE
16

>gi|110555016|gb|DQ680078.1| Human papillomavirus type 16 strain Asian
American-C variant
major capsid protein (L1) gene, complete cds
Length=1596

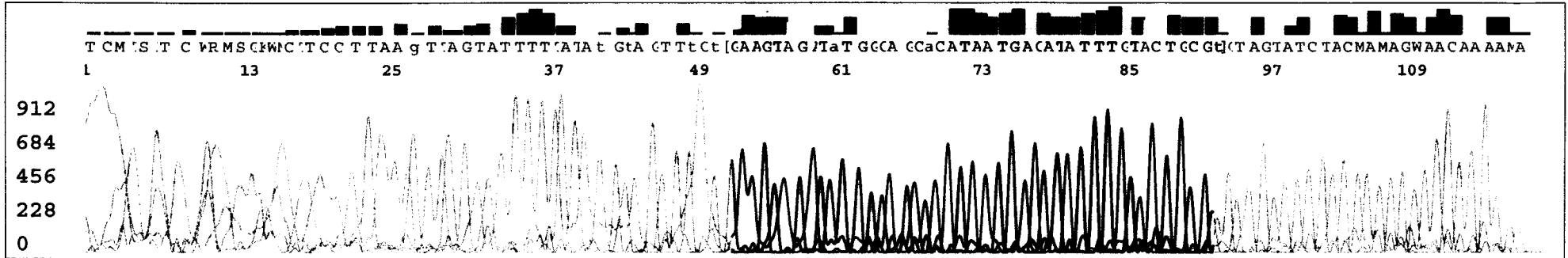
Score = 81.8 bits (41), Expect = 3e-15
Identities = 41/41 (100%), Gaps = 0/41 (0%)
Strand=Plus/Minus

```
Query 1 AAGTAGATATGGCAGCACATAATGACATATTTGTACTGCGT 41
      |||
Sbjct 1129 AAGTAGATATGGCAGCACATAATGACATATTTGTACTGCGT 1089
```

S/N G:13 A:22 T:34 C:29
KB.bcp
KB 1.2 Cap:4

HPV_2006-10-19_004
26
KB_3130_POP7_BDTv1.mob
Pts 1916 to 3238 Pk1 Loc:1916
Version 5.2.0 HiSQV Bases: 39

SPECIMEN # 379
HPV TYPE
16



SPECIMEN # 379
HPV TYPE

16

26.

>gi|110555016|gb|DQ680078.1| Human papillomavirus type 16 strain Asian
American-C variant
major capsid protein (L1) gene, complete cds
Length=1596

Score = 83.8 bits (42), Expect = 7e-16
Identities = 42/42 (100%), Gaps = 0/42 (0%)
Strand=Plus/Minus

Query	1	GAAGTAGATATGGCAGCACATAATGACATATTTGTACTGCGT	42
Sbjct	1130	GAAGTAGATATGGCAGCACATAATGACATATTTGTACTGCGT	1089

S/N G:7 A:13 T:16 C:13

KB.bcp

KB 1.2 Cap:3

HPV_2006-10-18_003

29-ch06-4189

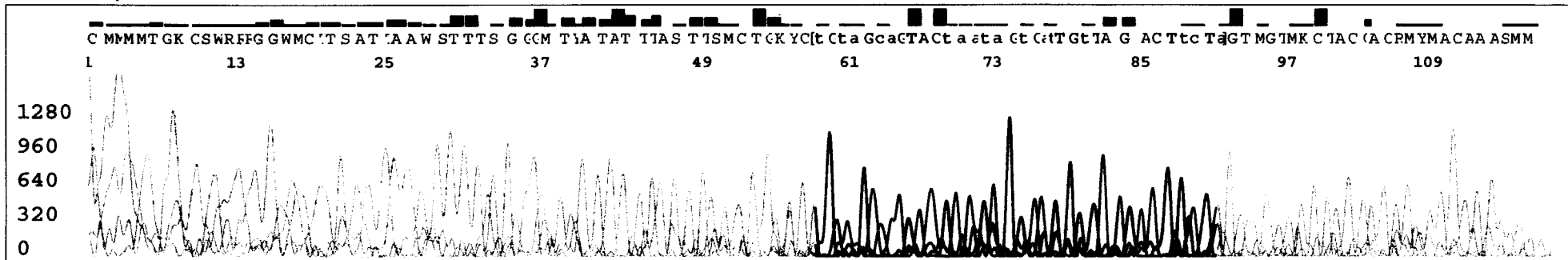
KB_3130_POP7_BDTv1.mob

Pts 1921 to 3234 Pk1 Loc:1921

Version 5.2.0 HISQV Bases: 9

SPECIMEN # 382
HPV TYPE

56



SPECIMEN # 382
HPV TYPE
56

>gi|70698531|gb|DQ007187.1| Human papillomavirus type 56 isolate
BR5868 L1 (L1) gene, partial
cds
Length=391

Score = 42.1 bits (21), Expect = 0.002
Identities = 21/21 (100%), Gaps = 0/21 (0%)
Strand=Plus/Minus

Query	1	TGTAGCAGTACTAATAGTCAT	21
Sbjct	38	TGTAGCAGTACTAATAGTCAT	18

S/N G:25 A:43 T:54 C:50

KB.bcp

KB 1.2 Cap:1

HPV_2006-10-19_001

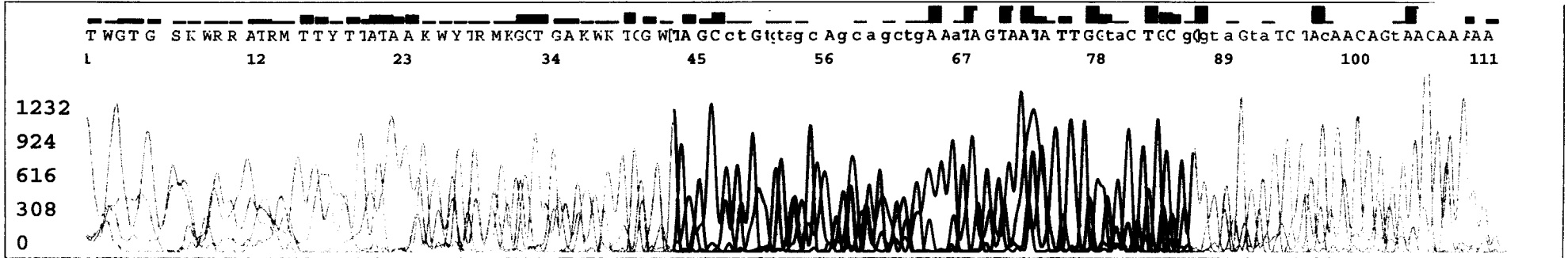
31

KB_3130_POP7_BDTv1.mob

Pts 1881 to 3138 Pk1 Loc:1881

Version 5.2.0 HISQV Bases: 10

SPECIMEN # 384
HPV TYPE 83



SPECIMEN # 384
HPV TYPE
83

31.

>gi|5059324|gb|AF151983.1|AF151983 Human papillomavirus type 83,
complete genome
Length=8104

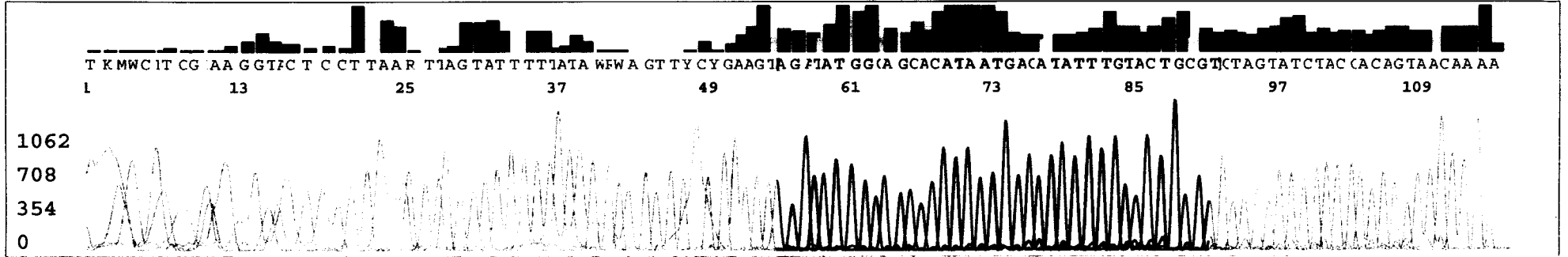
Score = 87.7 bits (44), Expect = 5e-17
Identities = 44/44 (100%), Gaps = 0/44 (0%)
Strand=Plus/Minus

```
Query 1 TAGCCTGTGTAGCAGCAGCTGAAATAGTAATATTGGTACTGCGG 44
      |||
Sbjct 6801 TAGCCTGTGTAGCAGCAGCTGAAATAGTAATATTGGTACTGCGG 6758
```

S/N G:42 A:38 T:53 C:42
KB.bcp
KB 1.2 Cap:4

HPV_2006-10-20_004
137-B
KB_3130_POP7_BDTv1.mob
Pts 1864 to 3132 Pk1 Loc:1864
Version 5.2.0 HISQV Bases: 69

SPECIMEN # 386
HPV TYPE
16



SPECIMEN # 386
HPV TYPE
16

>gi|110555016|gb|DQ680078.1| Human papillomavirus type 16 strain Asian
American-C variant
major capsid protein (L1) gene, complete cds
Length=1596

Score = 67.9 bits (34), Expect = 3e-11
Identities = 34/34 (100%), Gaps = 0/34 (0%)
Strand=Plus/Minus

```
Query 1      ATATGGCAGCACATAATGACATATTTGTACTGCG 34
           |||
Sbjct 1123   ATATGGCAGCACATAATGACATATTTGTACTGCG 1090
```

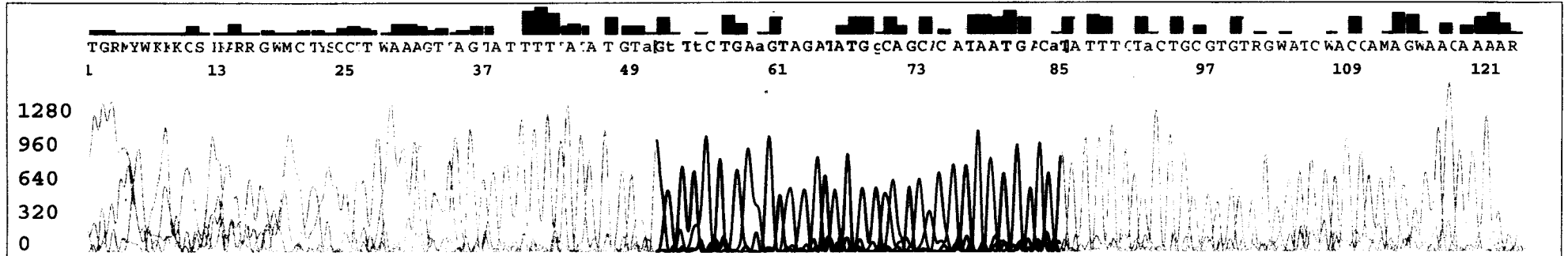
SPECIMEN # 389
HPV TYPE

16

S/N G:6 A:9 T:10 C:8

KB.bcp

KB 1.2 Cap:4



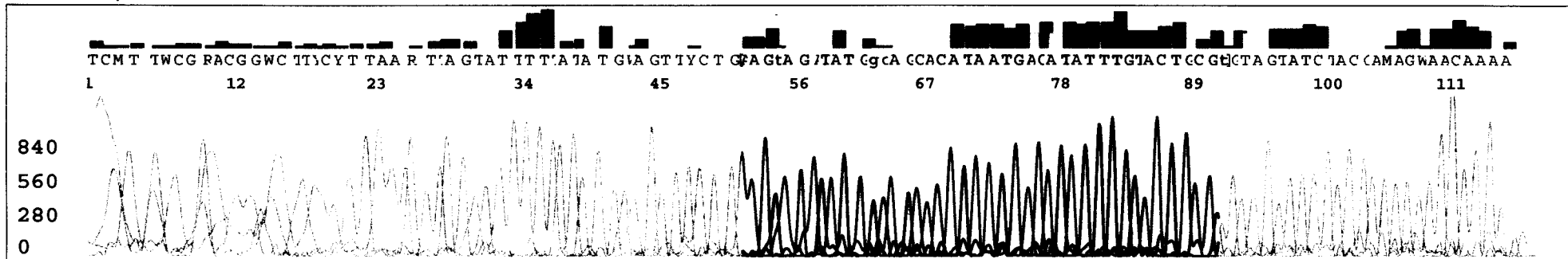
SPECIMEN # 389
HPV TYPE

16

>gi|77543464|gb|DQ218253.1| Human papillomavirus type 16 isolate
PVPOA3 major capsid protein
L1-like gene, partial sequence
Length=329

Score = 54.0 bits (27), Expect = 5e-07
Identities = 27/27 (100%), Gaps = 0/27 (0%)
Strand=Plus/Minus

Query	9	AGCCATAATGACATATTTGTTACTGCGT	35
Sbjct	75	AGCCATAATGACATATTTGTTACTGCGT	49



SPECIMEN # 391
HPV TYPE

16

>gi|110555016|gb|DQ680078.1| Human papillomavirus type 16 strain Asian
American-C variant
major capsid protein (L1) gene, complete cds
Length=1596

Score = 81.8 bits (41), Expect = 3e-15
Identities = 41/41 (100%), Gaps = 0/41 (0%)
Strand=Plus/Minus

```
Query 1 AAGTAGATATGGCAGCACATAATGACATATTTGTACTGCGT 41
        |||
Sbjct 1129 AAGTAGATATGGCAGCACATAATGACATATTTGTACTGCGT 1089
```


S/N G:7 A:11 T:11 C:10

KB.bcp

KB 1.2 Cap:4

HPV_2006-10-18_004

49-ch06-4335

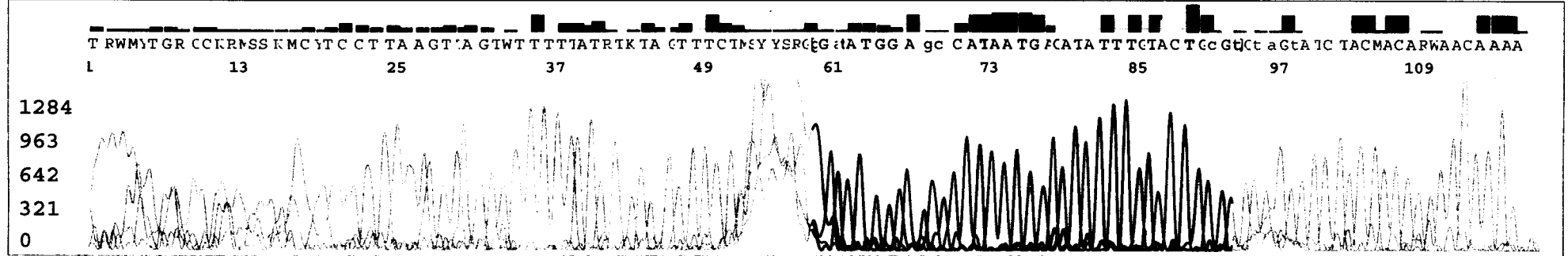
KB_3130_POP7_BDTv1.mob

Pts 1869 to 3182 Pk1 Loc:1869

Version 5.2.0 HISQV Bases: 27

SPECIMEN # 402
HPV TYPE

16



SPECIMEN # 402
HPV TYPE

16

>gi|110555016|gb|DQ680078.1| Human papillomavirus type 16 strain Asian
American-C variant
major capsid protein (L1) gene, complete cds
Length=1596

Score = 81.8 bits (41), Expect = 3e-15
Identities = 41/41 (100%), Gaps = 0/41 (0%)
Strand=Plus/Minus

```
Query 1 AAGTAGATATGGCAGCACATAATGACATATTTGTACTGCGT 41
      |||
Sbjct 1129 AAGTAGATATGGCAGCACATAATGACATATTTGTACTGCGT 1089
```

S/N G:33 A:78 T:97 C:74

KB.bcp

KB 1.2 Cap:1

HPV_2006-08-24_001

5

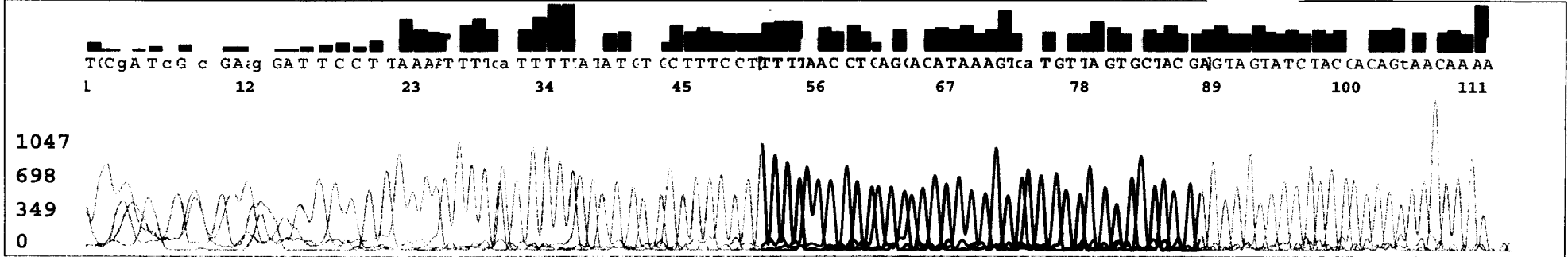
KB_3130_POP7_BDTv1.mob

Pts 1966 to 3246 Pk1 Loc:1966

Version 5.2.0 HISQV Bases: 69 #46

SPECIMEN # 406
HPV TYPE

52



SPECIMEN # 406
HPV TYPE
52

406.

>gi|66933417|gb|DQ057316.1| Human papillomavirus type 52 isolate
ED18604 L1 protein (L1)
gene, partial cds
Length=421

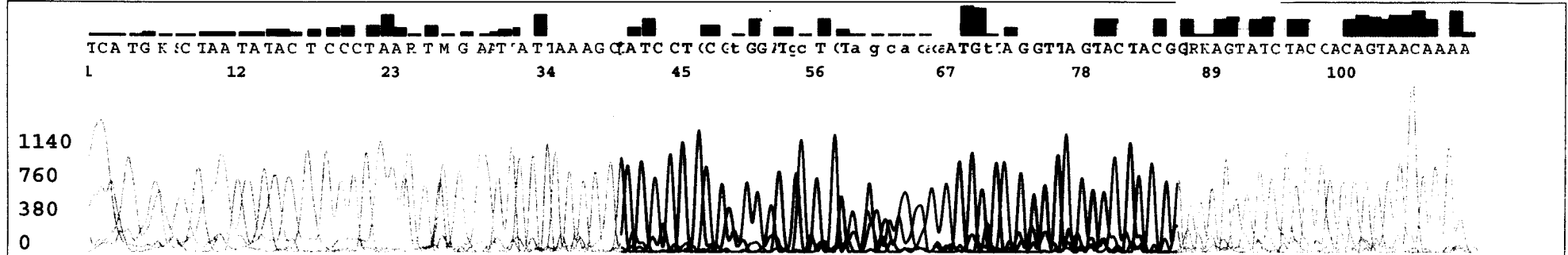
Score = 75.8 bits (38), Expect = 1e-13
Identities = 38/38 (100%), Gaps = 0/38 (0%)
Strand=Plus/Minus

```
Query 1      TTTTAACCTCAGCACATAAAGTCATGTTAGTGCTACGA 38
            |||
Sbjct 106    TTTTAACCTCAGCACATAAAGTCATGTTAGTGCTACGA 69
```

S/N G:36 A:71 T:69 C:70
KB.bcp
KB 1.2 Cap:2

HPV_2006-10-18_002
57-cm06-45503
KB_3130_POP7_BDTv1.mob
Pts 1822 to 3048 Pk1 Loc:1822
Version 5.2.0 HISQV Bases: 32

SPECIMEN # 410
HPV TYPE
54



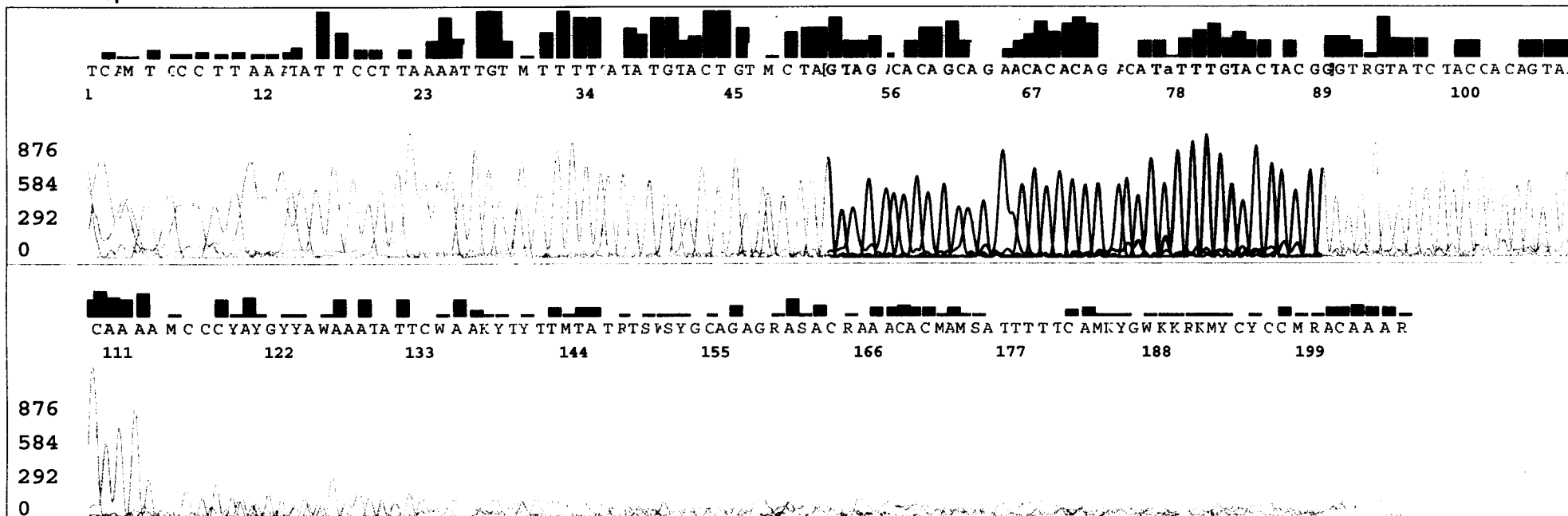
SPECIMEN # 410
HPV TYPE

54

>gi|1017782|gb|U37488.1|HPU37488 ■ Human papillomavirus type 54,
complete genome
Length=7759

Score = 89.7 bits (45), Expect = 1e-17
Identities = 45/45 (100%), Gaps = 0/45 (0%)
Strand=Plus/Minus

```
Query 1 TATCCTGCGTGGATGCTGTAGCACACAATGTTAGGTTAGTACTAC 45
      |||
Sbjct 6652 TATCCTGCGTGGATGCTGTAGCACACAATGTTAGGTTAGTACTAC 6608
```



SPECIMEN # 414
HPV TYPE
35

>gi|66933459|gb|DQ057337.1| Human papillomavirus type 35 isolate
NW2760 L1 protein (L1) gene,
partial cds
Length=351

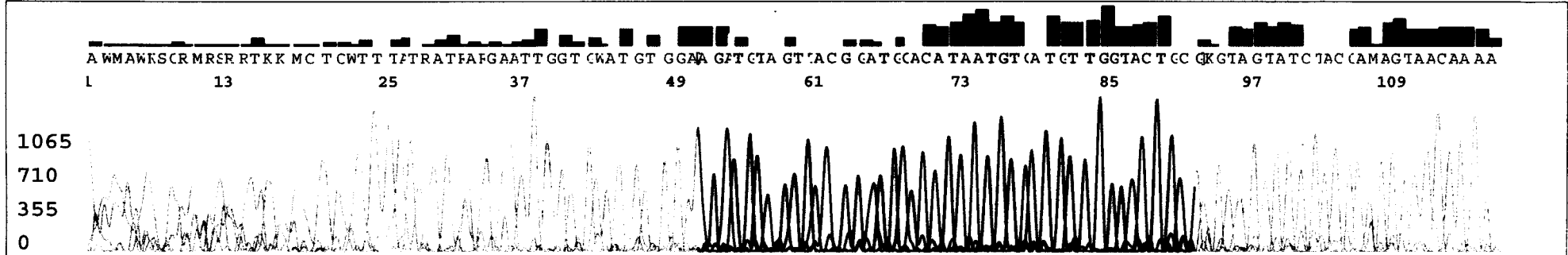
Score = 77.8 bits (39), Expect = 4e-14
Identities = 39/39 (100%), Gaps = 0/39 (0%)
Strand=Plus/Minus

```
Query 1 GTAGACACAGCAGAACACACAGACATATTTGTACTACGG 39
      |||
Sbjct 44 GTAGACACAGCAGAACACACAGACATATTTGTACTACGG 6
```


S/N G:7 A:8 T:11 C:8
KB.bcp
KB 1.2 Cap:4

HPV_2006-10-18_004
62-ms06-13867
KB_3130_POP7_BDTv1.mob
Pts 1811 to 3048 Pk1 Loc:1811
Version 5.2.0 HISQV Bases: 44

SPECIMEN # 415
HPV TYPE
6



SPECIMEN # 415
HPV TYPE
6

>gi|25272068|gb|AF548810.1| ■ Human papillomavirus type 6 isolate 1 L1
(L1) gene, partial cds
Length=138

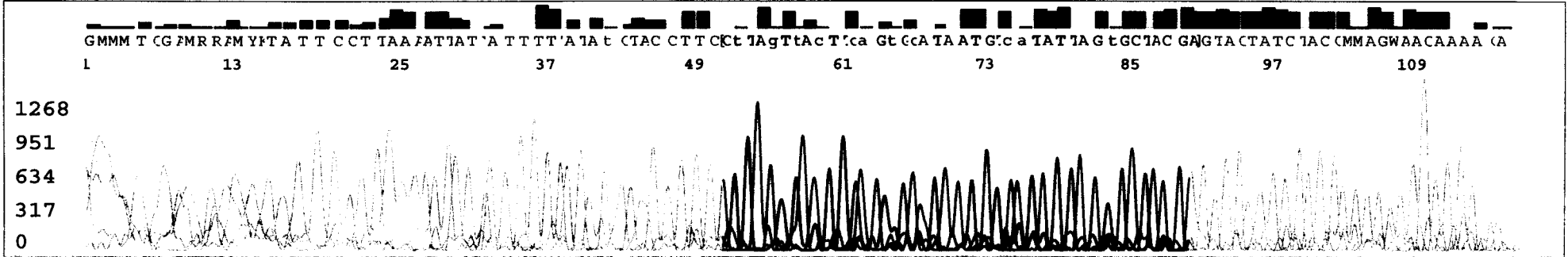
Score = 83.8 bits (42), Expect = 7e-16
Identities = 42/42 (100%), Gaps = 0/42 (0%)
Strand=Plus/Minus

```
Query 1 AGATGTAGTTACGGATGCACATAATGTCATGTTGGTACTGCG 42
      |||
Sbjct 66 AGATGTAGTTACGGATGCACATAATGTCATGTTGGTACTGCG 25
```

S/N G:12 A:31 T:32 C:28
KB.bcp
KB 1.2 Cap:1

HPV_2006-10-18_001
64-nh06-1865
KB_3130_POP7_BDTv1.mob
Pts 1794 to 3048 Pk1 Loc:1794
Version 5.2.0 HISQV Bases: 43

SPECIMEN # 417
HPV TYPE
58



SPECIMEN # 417
HPV TYPE
58

>gi|66933437|gb|DQ057326.1| Human papillomavirus type 58 isolate
HK2178 L1 protein (L1) gene,
partial cds
Length=421

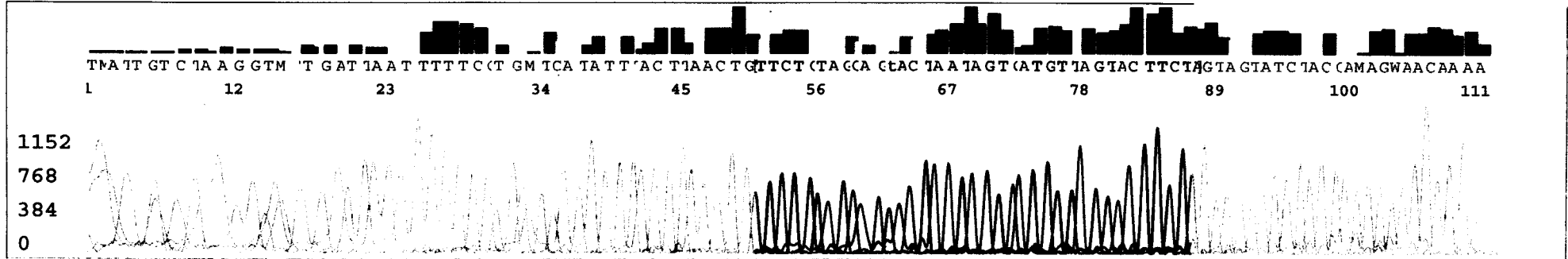
Score = 79.8 bits (40), Expect = 1e-14
Identities = 40/40 (100%), Gaps = 0/40 (0%)
Strand=Plus/Minus

```
Query 1 CTTAGTTACTTCAGTGCATAATGTCATATTAGTGCTACGA 40
      |||
Sbjct 93 CTTAGTTACTTCAGTGCATAATGTCATATTAGTGCTACGA 54
```

S/N G:26 A:60 T:66 C:60
KB.bcp
KB 1.2 Cap:2

HPV_2006-10-18_002
65-nh06-1903
KB_3130_POP7_BDTv1.mob
Pts 1802 to 3021 Pk1 Loc:1802
Version 5.2.0 HISQV Bases: 58

SPECIMEN # 418
HPV TYPE
56



SPECIMEN # 418
HPV TYPE
56

>gi|70698531|gb|DQ007187.1| Human papillomavirus type 56 isolate
BR5868 L1 (L1) gene, partial
cds
Length=391

Score = 73.8 bits (37), Expect = 6e-13
Identities = 37/37 (100%), Gaps = 0/37 (0%)
Strand=Plus/Minus

```
Query 1 TTCTGTAGCAGTACTAATAGTCATGTTAGTACTTCTA 37
      |||
Sbjct 41 TTCTGTAGCAGTACTAATAGTCATGTTAGTACTTCTA 5
```

S/N G:37 A:59 T:60 C:53

KB.bcp

KB 1.2 Cap:3

HPV_2006-10-18_003

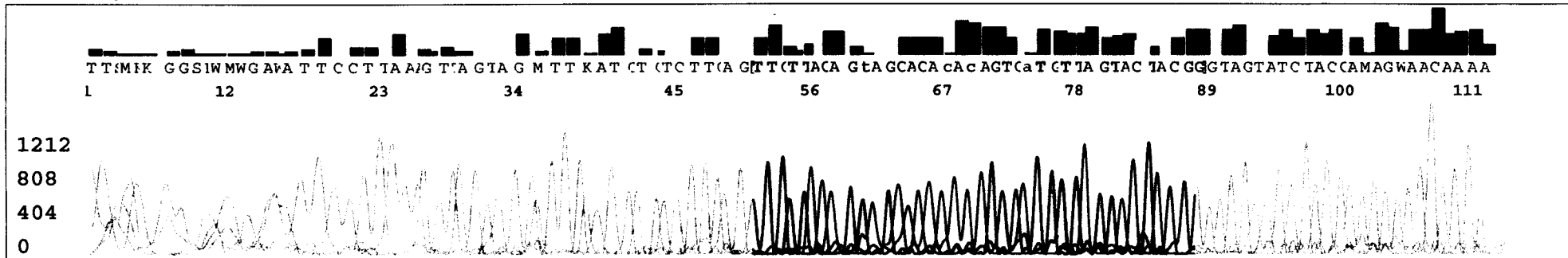
67-nh06-1940

KB_3130_POP7_BDTv1.mob

Pts 1802 to 3021 Pk1 Loc:1802

Version 5.2.0 HISQV Bases: 56

SPECIMEN # 420
HPV TYPE
32



SPECIMEN # 420
HPV TYPE

32

>gi|251684|gb|S40236.1| L1 [human papillomavirus HPV, mucosotropic
type 32, cervical
smear, Genomic, 99 nt]
Length=99

Score = 75.8 bits (38), Expect = 1e-13
Identities = 38/38 (100%), Gaps = 0/38 (0%)
Strand=Plus/Minus

```
Query 1 TTGTTACAGTAGCACACACAGTCATGTTAGTACTACGG 38
      |||
Sbjct 41 TTGTTACAGTAGCACACACAGTCATGTTAGTACTACGG 4
```


S/N G:15 A:55 T:62 C:41

KB.bcp

KB 1.2 Cap:4

HPV_2006-10-18_004

68-nh06-1941

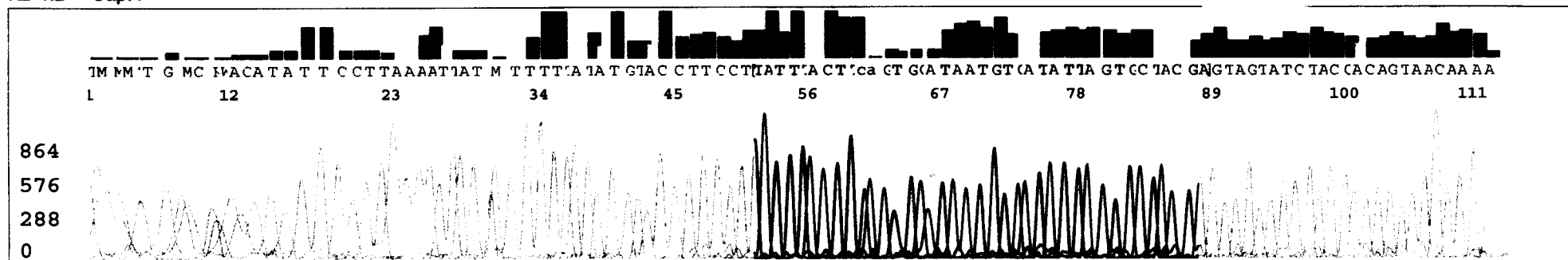
KB_3130_POP7_BDTv1.mob

Pts 1797 to 3021 Pk1 Loc:1797

Version 5.2.0 HISQV Bases: 64

SPECIMEN # 421
HPV TYPE

58



SPECIMEN # 421
HPV TYPE

58

>gi|90109952|gb|DQ431187.1| Human papillomavirus type 58 isolate DF19
major capsid protein
L1 gene, partial cds
Length=409

Score = 73.8 bits (37), Expect = 6e-13
Identities = 37/37 (100%), Gaps = 0/37 (0%)
Strand=Plus/Minus

```
Query 1 TATTTACTTCAGTGCATAATGTCATATTAGTGCTACG 37
      |||
Sbjct 83 TATTTACTTCAGTGCATAATGTCATATTAGTGCTACG 47
```

S/N G:10 A:17 T:21 C:18

KB.bcp

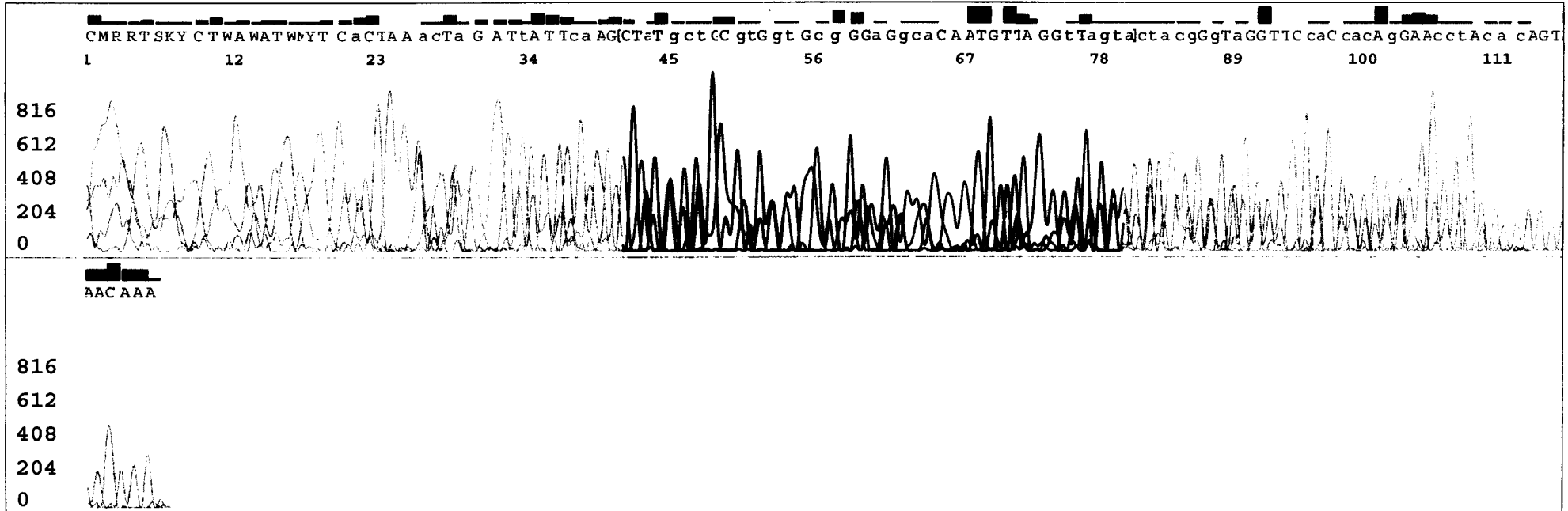
KB 1.2 Cap:2

KB_3130_POP7_BDTv1.mob

Pts 1967 to 3375 Pk1 Loc:1967

Version 5.2.0 HISQV Bases: 7

54



SPECIMEN #
HPV TYPE

425

54

>gi|1017782|gb|U37488.1|HPU37488 ■ Human papillomavirus type 54,
complete genome
Length=7759

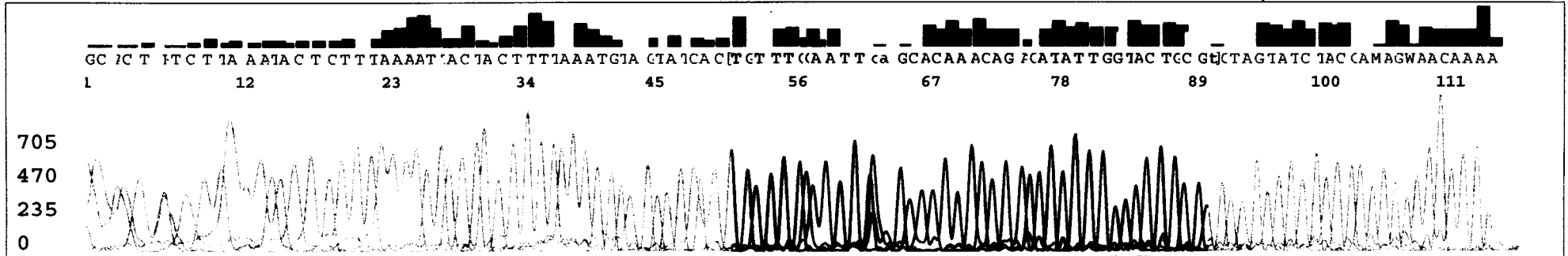
Score = 36.2 bits (18), Expect = 0.14
Identities = 18/18 (100%), Gaps = 0/18 (0%)
Strand=Plus/Minus

Query	23	CACAATGTTAGGTTAGTA	40
Sbjct	6629	CACAATGTTAGGTTAGTA	6612

S/N G:25 A:65 T:60 C:59
KB.bcp
KB 1.2 Cap:4

HPV_2006-10-08_004
20
KB_3130_POP7_BDTv1.mob
Pts 1953 to 3266 Pk1 Loc:1953
Version 5.2.0 HISQV Bases: 53

SPECIMEN # 427
HPV TYPE
31



SPECIMEN # 427
HPV TYPE
31

>gi|83267689|gb|DQ241373.1| Human papillomavirus type 31 L1 protein
gene, partial cds
Length=392

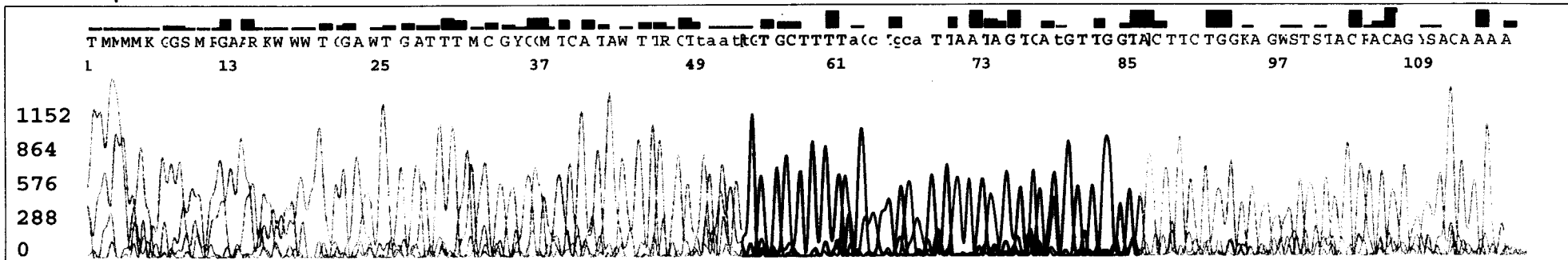
Score = 65.9 bits (33), Expect = 2e-10
Identities = 40/41 (97%), Gaps = 1/41 (2%)
Strand=Plus/Minus

```
Query 1 TGTTTGCAATT-CAGCACAAACAGACATATTGGTACTGCGT 40
          |||
Sbjct 66 TGTTTGCAATTGCAGCACAAACAGACATATTGGTACTGCGT 26
```

S/N G:5 A:8 T:9 C:8

KB.bcp

KB 1.2 Cap:3



SPECIMEN # 439
HPV TYPE 66

>gi|94490343|gb|DQ486474.1| Human papillomavirus type 66 isolate Bsb-
107 major capsid protein
L1 gene, partial cds
Length=449

Score = 67.9 bits (34), Expect = 3e-11
Identities = 34/34 (100%), Gaps = 0/34 (0%)
Strand=Plus/Minus

Query	1	TGTGCTTTTAGCTGCATTAATAGTCATGTTGGTA	34
Sbjct	105	TGTGCTTTTAGCTGCATTAATAGTCATGTTGGTA	72

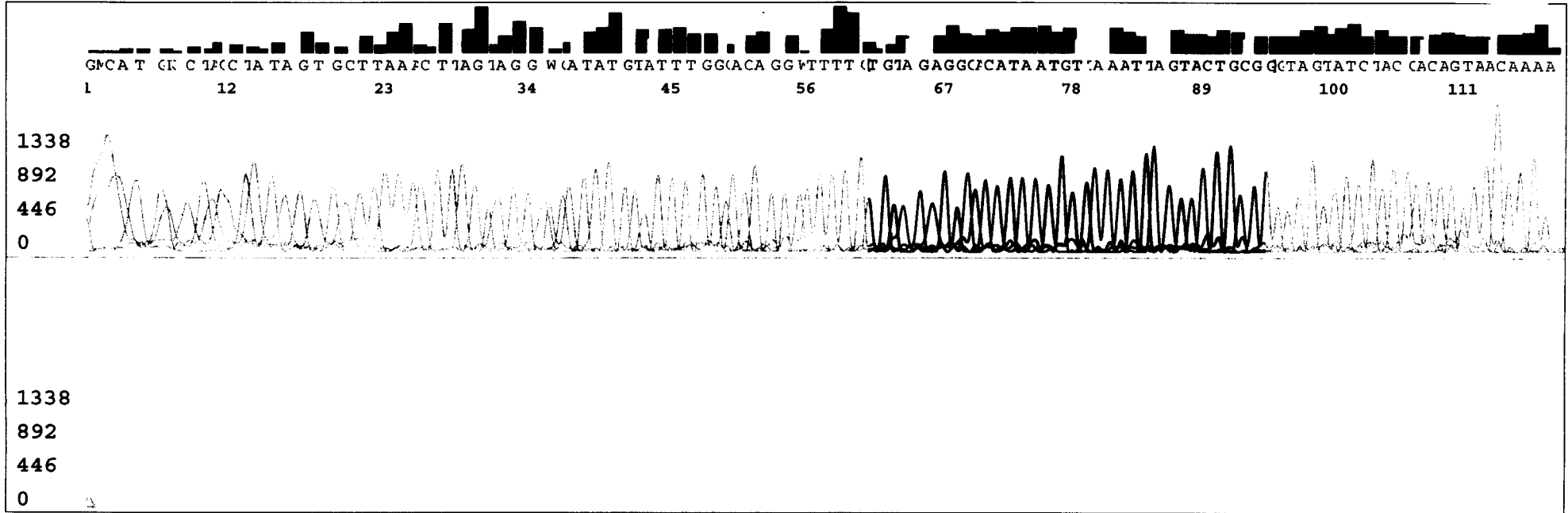
SPECIMEN # 440
HPV TYPE 45

6
T
T
0
16

S/N G:37 A:65 T:61 C:49

KB.bcp

KB 1.2 Cap:4



SPECIMEN # 440
HPV TYPE
45

>gi|68159733|gb|DQ080002.1| Human papillomavirus type 45 L2 (L2) and
L1 (L1) genes, complete
cds
Length=3057

Score = 67.9 bits (34), Expect = 3e-11
Identities = 34/34 (100%), Gaps = 0/34 (0%)
Strand=Plus/Minus

```
Query 1      TGTAGAGGCACATAATGTTAAATTAGTACTGCGG 34
          |||
Sbjct 2560   TGTAGAGGCACATAATGTTAAATTAGTACTGCGG 2527
```

S/N G:26 A:80 T:92 C:91

KB.bcp

KB 1.2 Cap:1

HPV_2006-10-18_001

88-sm06-5277

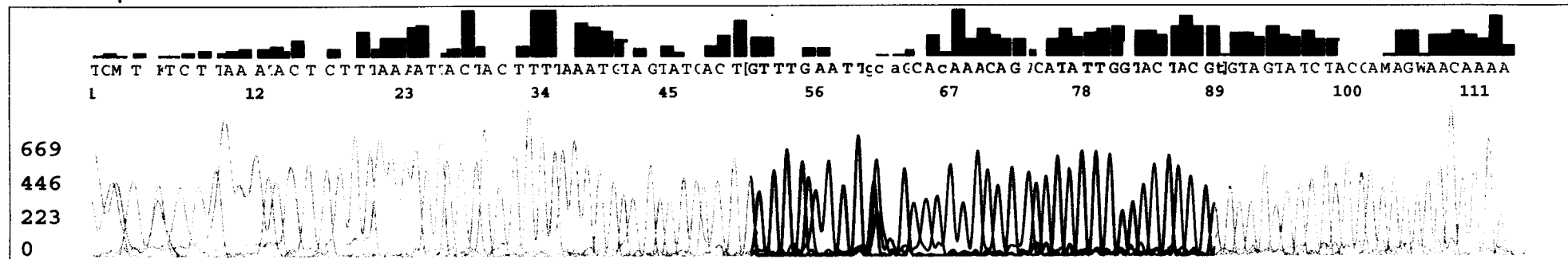
KB_3130_POP7_BDTv1.mob

Pts 1832 to 3096 Pk1 Loc:1832

Version 5.2.0 HISQV Bases: 55

SPECIMEN # 441
HPV TYPE

31



SPECIMEN # 441
HPV TYPE

31

>gi|83267689|gb|DQ241373.1| Human papillomavirus type 31 L1 protein
gene, partial cds
Length=392

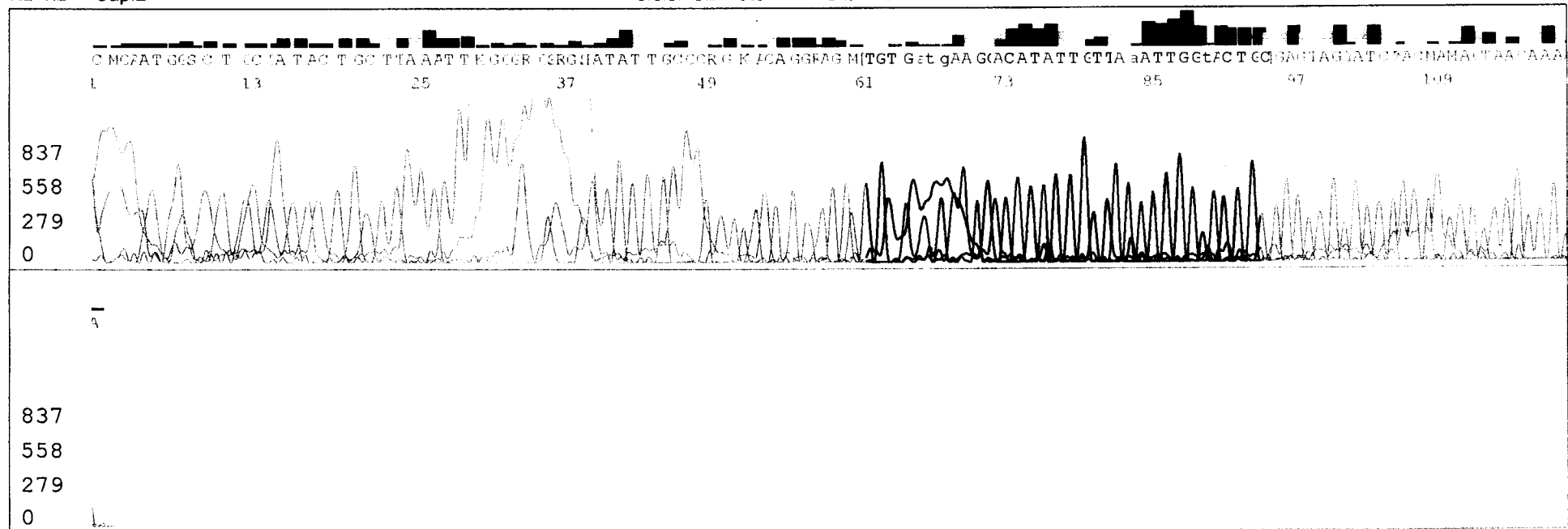
Score = 56.0 bits (28), Expect = 2e-07
Identities = 28/28 (100%), Gaps = 0/28 (0%)
Strand=Plus/Minus

```
Query 15 CAGCACAAACAGACATATTGGTACTGCG 42
          |||
Sbjct 54 CAGCACAAACAGACATATTGGTACTGCG 27
```

S/N G:10 A:18 T:47 C:17

KB.bcp

KB 1.2 Cap:2



SPECIMEN # 447
HPV TYPE 18

>gi|94490339|gb|DQ486472.1| Human papillomavirus type 18 isolate Bsb-
48 major capsid protein
L1 gene, partial cds
Length=455

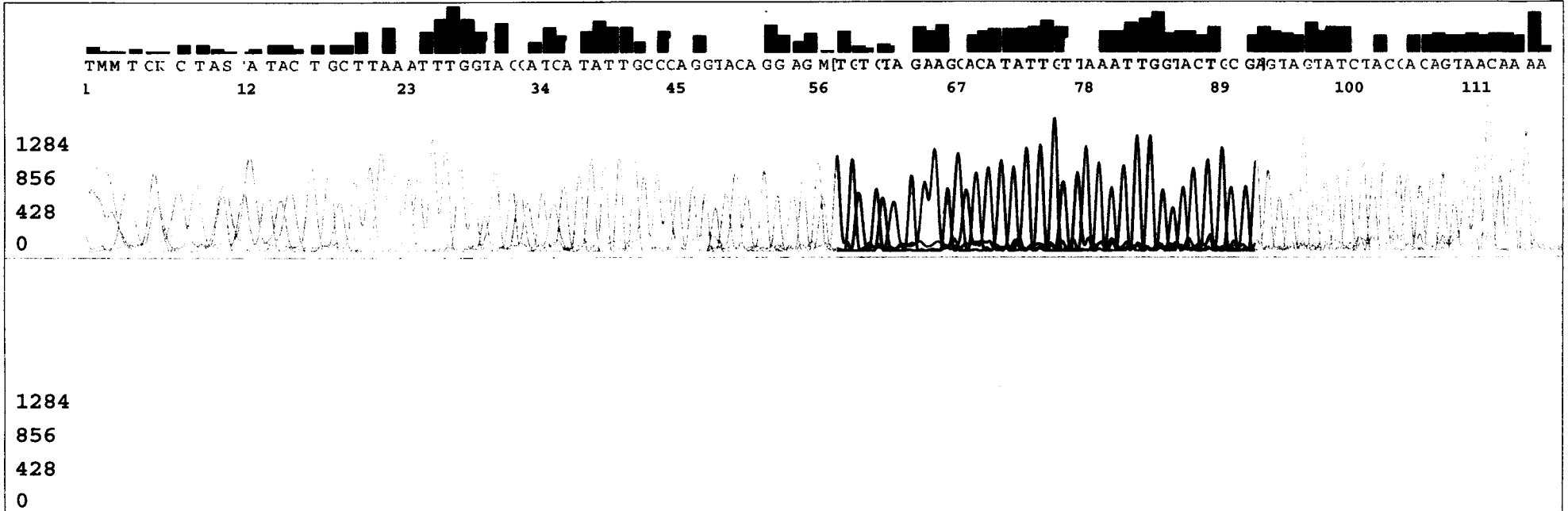
Score = 56.0 bits (28), Expect = 1e-07
Identities = 28/28 (100%), Gaps = 0/28 (0%)
Strand=Plus/Minus

```
Query 7 GAAGCACATATTGTTAAATTGGTACTGC 34
      |||
Sbjct 95 GAAGCACATATTGTTAAATTGGTACTGC 68
```

S/N G:38 A:80 T:82 C:74
KB.bcp
KB 1.2 Cap:1

HPV_2006-10-19_001
96
KB_3130_POP7_BDTv1.mob
Pts 1872 to 3198 Pk1 Loc:1872
Version 5.2.0 HISQV Bases: 65

SPECIMEN # 449
HPV TYPE 18



SPECIMEN # 449
HPV TYPE
18

96.

>gi|94490339|gb|DQ486472.1| Human papillomavirus type 18 isolate Bsb-
48 major capsid protein
L1 gene, partial cds
Length=455

Score = 71.9 bits (36), Expect = 2e-12
Identities = 36/36 (100%), Gaps = 0/36 (0%)
Strand=Plus/Minus

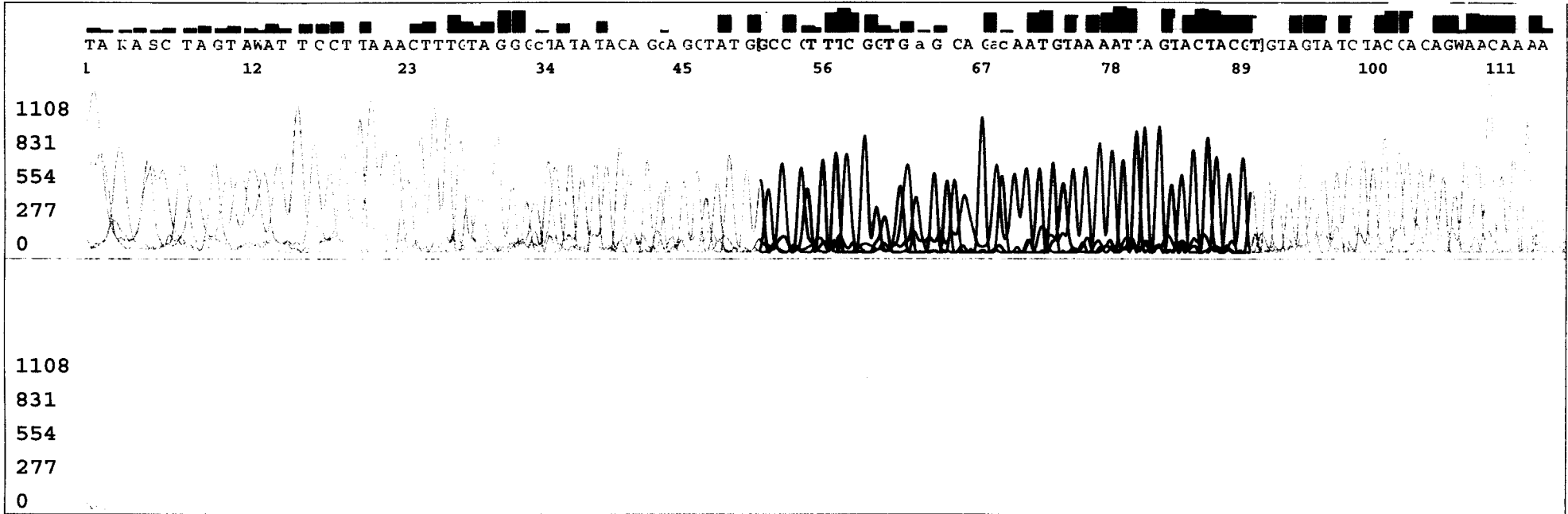
```
Query 1 TGTGTAGAAGCACATATTGTTAAATTGGTACTGCGA 36
      |||
Sbjct 101 TGTGTAGAAGCACATATTGTTAAATTGGTACTGCGA 66
```


SPECIMEN # 450
mixed
HPV TYPE (not 6, 11, 16, 18)

S/N G:37 A:67 T:70 C:78

KB.bcp

KB 1.2 Cap:2



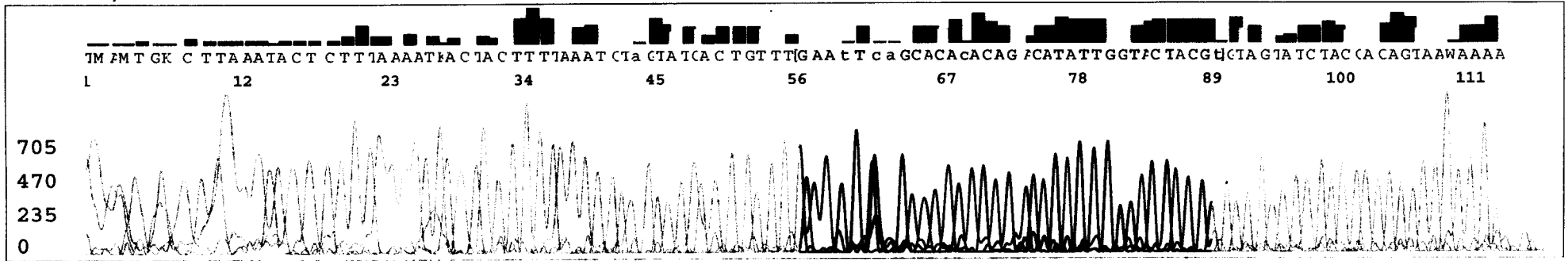
S/N G:9 A:19 T:24 C:24
KB.bcp
KB 1.2 Cap:4

HPV_2006-10-20_004

99-A

KB_3130_POP7_BDTv1.mob
Pts 1867 to 3165 Pk1 Loc:1867
Version 5.2.0 HiSQV Bases: 47

SPECIMEN # 452
HPV TYPE 31



SPECIMEN # 452
HPV TYPE 31

>gi|66933451|gb|DQ057333.1| Human papillomavirus type 31 isolate
BR1692 L1 protein (L1) gene,
partial cds
Length=351

Score = 58.0 bits (29), Expect = 3e-08
Identities = 29/29 (100%), Gaps = 0/29 (0%)
Strand=Plus/Minus

```
Query 6 CAGCACACACAGACATATTGGTACTACGT 34
      |||
Sbjct 44 CAGCACACACAGACATATTGGTACTACGT 16
```

S/N G:50 A:96 T:121 C:81
KB.bcp
KB 1.2 Cap:4

HPV_2006-10-19_004
102
KB_3130_POP7_BDTv1.mob
Pts 1858 to 3156 Pk1 Loc:1858
Version 5.2.0 HISQV Bases: 60

SPECIMEN # 455
HPV TYPE
16

