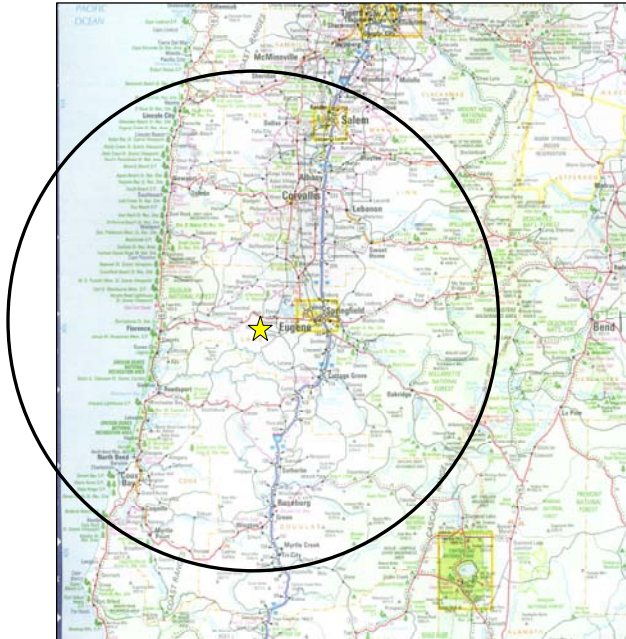


Western Oregon CROP
A Summary of CROP Landscape Analyses Results
(2008 – 2012)

Western Oregon CROP:
Center Point:
Vaughn
75-mi. radius

- 3 National Forests
- State lands
- State Dept. of Trans.
- 4 BLM districts
- 8 Counties



gT = green tons (up to 7" dbh)
 S = small log mmbf (>7"-12" dbh)
 L = large log mmbf (>12" dbh)

<i>By Species</i>		5-yr total (Biomass = gT)	5-yr total Small log (mmbf)	5-yr total Large log (mmbf)
Douglas fir	(81% of 5-yr. total)	882,597	808.955	775.666
Western hemlock	(10% of 5-yr. total)	131,604	101.27	83.916
White woods	(2% of 5-yr. total)	43,484	26.162	9.732
Red Alder	(2% of 5-yr. total)	3,000	20.837	14.254
Grand fir	(1% of 5-yr. total)	12,891	13.913	10.66
Mixed pine	(1% of 5-yr. total)	16,655	12.338	6.8
Sitka spruce	(1% of 5-yr. total)	1,000	.912	13.35
Mixed cedar	(1% of 5-yr. total)	6,131	6.138	4.09
Other conifers	(<1% of 5-yr. total)	5,700	2.873	5.328
True firs	(<1% of 5-yr. total)	9,585	4.102	2.132
Western red cedar	(<1% of 5-yr. total)	879	1.411	3.925
Lodgepole pine	(<1% of 5-yr. total)	0	1.99	3.11
Incense cedar	(<1% of 5-yr. total)	629	1.411	2.475
Ponderosa pine	(<1% of 5-yr. total)	629	2.059	2.475
Hardwoods	(<1% of 5-yr. total)	725	.525	2.535
Port Orford cedar	(<1% of 5-yr. total)	250	.35	1.45
Maple	(<1% of 5-yr. total)	500	.38	1.22
Noble fir	(<1% of 5-yr. total)	0	0	.268

Willamette NF: (gT= 30,420; Small log = 66.94 mmbf; Large log = 99.91 mmbf)

Agency	Ranger Districts	5-yr total (Biomass = gT)	5-yr total Small log (mmbf)	5-yr total Large log (mmbf)
Willamette NF	Middle Fork	14,766	34.34	51.2
	McKenzie	8,887	19.05	28.45
	Sweet Home	6,767	13.54	20.25

Siuslaw NF: (gT= 18,939; Small log = 65.96 mmbf; Large log = 70.25 mmbf)

Agency	Ranger Districts	5-yr total (Biomass = gT)	5-yr total Small log (mmbf)	5-yr total Large log (mmbf)
Siuslaw NF	Hebo	2,462	8.57	9.13
	South Zone	16,477	57.39	61.12

Umpqua NF: (gT= 243,883; Small log = 155.4 mmbf; Large log = 130.4 mmbf)

Agency	Ranger Districts	5-yr total (Biomass = gT)	5-yr total Small log (mmbf)	5-yr total Large log (mmbf)
Umpqua NF	Cottage Grove	28,944	31.1	36.4
	N. Umpqua	65,719	38.1	37.1
	Tiller	46,856	30.2	19.4
	Diamond Lake	102,364	56	37.5

BLM: (gT= 815,013; Small log = 648.757 mmbf; Large log = 372.638 mmbf)

Agency	Field Offices	5-yr total (Biomass = gT)	5-yr total Small log (mmbf)	5-yr total Large log (mmbf)
OR BLM	Eugene	246,000	167	136.1
	Coos Bay	3,000	176.5	59.8
	Roseburg	122,618	122.772	81.848
	Salem	443,395	182.484	94.89

Other agencies:

Agency	5-yr total (Biomass = gT)	5-yr total Small log (mmbf)	5-yr total Large log (mmbf)
ODF	0	19.346	98.678
DSL	0	40.984	119.207
ODOT	4,500	1.7	1.5
OR Counties	3,500	7.05	50.8

Western Oregon: All Agencies CROP offering/removal '08 – '12
(gT = 1,116,260 / S = 1,006.156 mmbf / L = 943.39 mmbf)
(2,172.8 total mmbf)

BLM: 4 Districts – 55%
(gT = 815,013 / S = 648.757 / L = 372.638)

Umpqua NF: 4 RDs – 15%
(gT = 243,885 / S = 155.407 / L = 130.405)

Siuslaw NF: 2 RDs – 6%
(gT = 18,940 / S = 65.965 / L = 70.247)

Willamette NF: 3 RDs – 8%
(gT = 30,422 / S = 66.947 / L = 99.915)

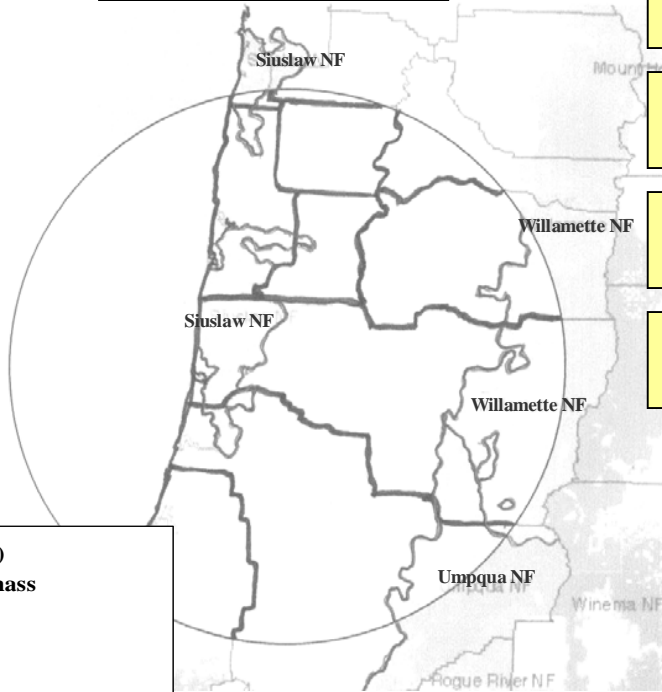
gT = green tons (up to 7" dbh)
 S = small log mmbf (>7"-12" dbh)
 L = large log mmbf (>12" dbh)

DSL: Elliott SF - 7%
(gT = 0 / S = 40.984 / L = 119.207)

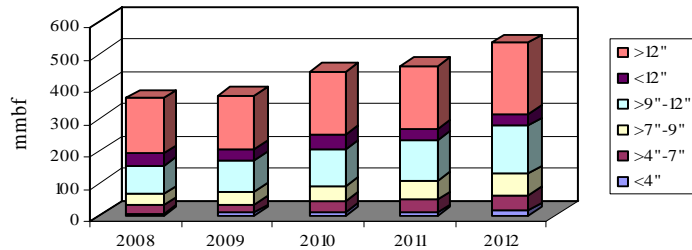
ODOT – <1%
(gT = 4,500 / S = 1.7 / L = 1.5)

ODF: 3 Districts – 5%
(gT = 0 / S = 19.346 / L = 98.678)

Counties: 2 Co.'s – 3%
(gT = 3,500 / S = 7.05 / L = 50.8)



All Agencies: (5-yr total = 2,172.8 mmbf)
223.252 mmbf is <7" = 1,116,260 gT of biomass
1006.16 mmbf is >7"-12" = small logs
943.391 mmbf is >12" = large logs

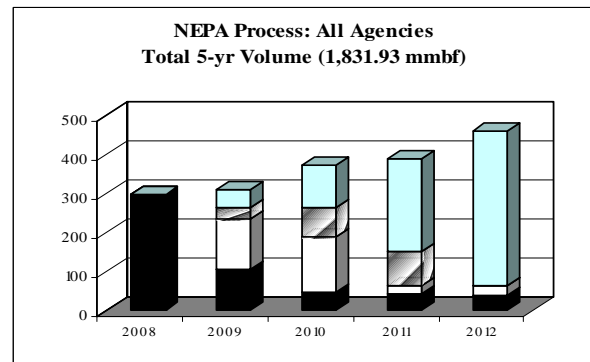
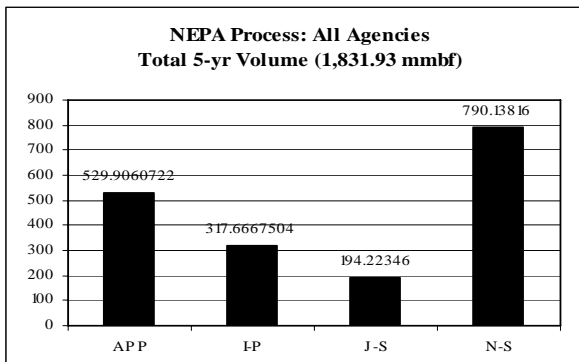


	gT	mmbf	
	Biomass	Small Log	Large Log
2008	156776.9987	159.5794	171.3325
2009	180128.4987	170.5193	163.9411
2010	221333.6487	206.0598	194.8194
2011	245766.8987	218.6983	192.7427
2012	312254.8987	251.2997	220.5557
Totals	1116260.943	1006.1565	943.3915
%	10%	46%	43%
mmbf	223.2522		

2172.8002

NEPA Process – All Agencies: Total 5-yr volume (1,831.93 mmbf; includes gT as mmbf)

	<i>mmbf</i>	<i>% of total</i>
Approved	529.906	29%
In process	317.667	17%
Just started	194.223	11%
Not started	790.138	43%



Western Oregon: All Agencies CROP offering/removal '08 – '12
(gT = 1,116,260 / S = 1,006.156 mmbf / L = 943.39 mmbf)
(2,172.8 total mmbf)

gT = green tons (up to 7" dbh)
 S = small log mmbf (>7"-12" dbh)
 L = large log mmbf (>12" dbh)

BLM:

- A Coos Bay District (gT = 3,000 / S = 176.5 / L = 59.8)
- B Eugene District (gT = 246,000 / S = 167 / L = 136.1)
- C Roseburg District (gT = 122,618 / S = 122.77 / L = 81.848)
- D Salem District (gT = 443,395 / S = 182.484 / L = 94.89)

Counties:

- E Coos Co. (gT = 3,500 / S = 4.55 / L = 40.8)
- F Douglas Co. (gT = 0 / S = 2.5 / L = 10)

ODF:

- G W. Lane District (gT = 0 / S = 3.821 / L = 34.843)
- H N. Cascade District (gT = 0 / S = 0 / L = 28.235)
- I W. Oregon District (gT = 0 / S = 15.24 / L = 35.599)

Umpqua NF:

- J Cottage Grove RD (gT = 28,944 / S = 31.039 / L = 36.466)
- K N. Umpqua RD (gT = 65,719 / S = 38.145 / L = 37.136)
- L Tiller RD (gT = 46,856 / S = 30.204 / L = 19.35)
- M Diamond Lake RD (gT = 102,364 / S = 56.019 / L = 37.453)

Siuslaw NF:

- N Hebo RD (gT = 2,462 / S = 8.575 / L = 9.132)
- O South Zone RD (gT = 16,477 / S = 57.39 / L = 61.115)

Willamette NF:

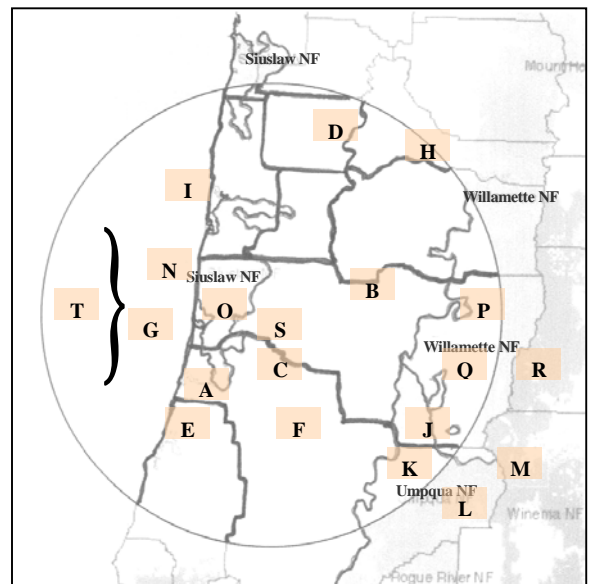
- P Middle Fork RD (gT = 14,766 / S = 34.342 / L = 51.197)
- Q McKenzie RD (gT = 8,887 / S = 19.0558 / L = 28.458)
- R Sweet Home RD (gT = 6,767 / S = 13.546 / L = 20.258)

DSL:

- S Elliott SF (gT = 0 / S = 40.984 / L = 119.207)

ODOT:

- T ODOT (gT = 4,500 / S = 1.7 / L = 1.5)



Western Oregon: Douglas Fir CROP offering/removal '08 - '12
(gT = 882,597 / S = 808.955 mmbf / L = 775.66 mmbf)
(1,761.14 total mmbf)

BLM: 4 Districts – 55%
(gT = 655,011 / S = 527.087 / L = 305.31)

Umpqua NF: 4 RDs – 15%
(gT = 184,972 / S = 116.145 / L = 111.58)

Siuslaw NF: 2 RDs – 8%
(gT = 17,993 / S = 62.667 / L = 66.734)

Willamette NF: 3 RDs – 7%
(gT = 22,870 / S = 47.313 / L = 70.212)

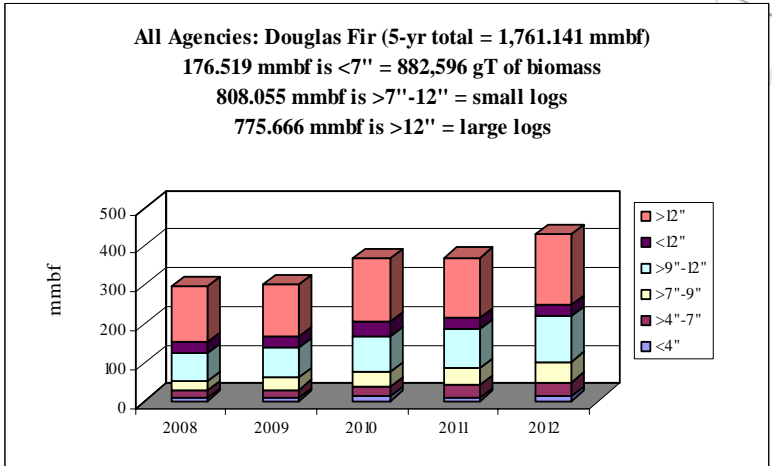
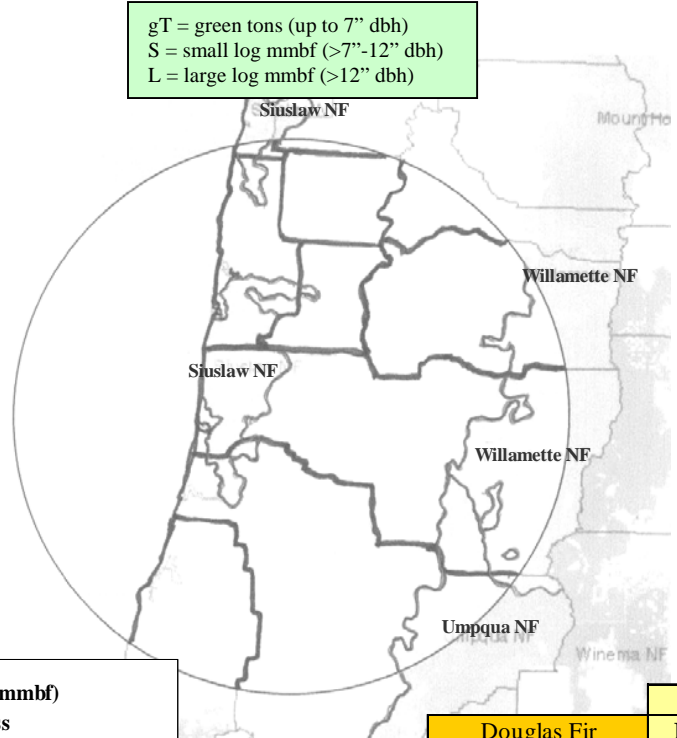
gT = green tons (up to 7" dbh)
 S = small log mmbf (>7"-12" dbh)
 L = large log mmbf (>12" dbh)

DSL: Elliott SF – 8%
(gT = 0 / S = 36.668 / L = 109.87)

ODOT – <1%
(gT = 1,000 / S = .2 / L = .1)

ODF: 3 Districts – 6%
(gT = 0 / S = 15.1 / L = 85.708)

Counties: 2 Co.'s – 2%
(gT = 750 / S = 3.775 / L = 26.15)



Douglas Fir	gT	mmbf	
	Biomass	Small Log	Large Log
2008	124036.7869	128.2701	141.1454
2009	141466.1539	137.3493	133.6593
2010	177183.9879	169.3795	163.9118
2011	198252.7459	172.9837	157.1177
2012	241657.2539	200.9731	179.8320
Totals	882596.9284	808.9556	775.6663
%	10%	46%	44%
mmbf	176.5194		

1761.1412

Western Oregon: Western Hemlock CROP offering/removal '08 – '12
(gT = 131,604 / S = 101.27 mmbf / L = 83.91 mmbf)
(211.508 total mmbf)

gT = green tons (up to 7" dbh)
 S = small log mmbf (>7"-12" dbh)
 L = large log mmbf (>12" dbh)

BLM: 4 Districts – 71%
 (gT = 124,373 / S = 80.319 / L = 45.992)

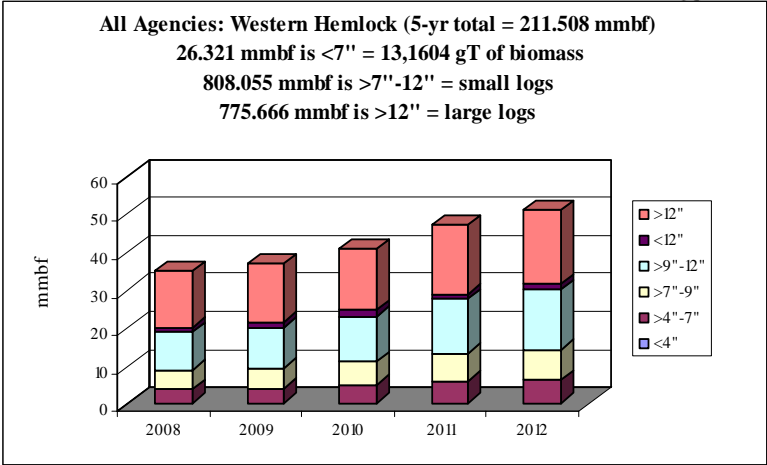
Siuslaw NF: 2 RDs – 3%
 (gT = 946 / S = 3.298 / L = 3.512)

Willamette NF: 3 RDs – 16%
 (gT = 5,034 / S = 13.089 / L = 19.8)

ODOT – <1%
 (gT = 1,000 / S = .2 / L = .4)

ODF: 3 Districts – 5%
 (gT = 0 / S = 3.3 / L = 8.259)

Counties: 2 Co.'s – 3%
 (gT = 250 / S = 1.062 / L = 5.95)



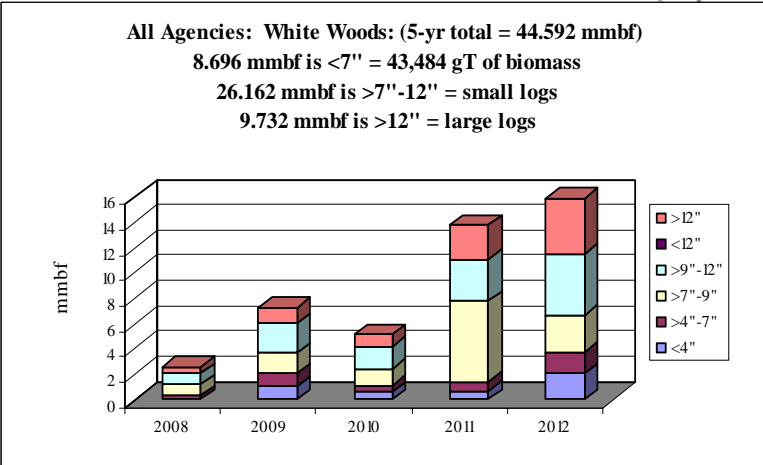
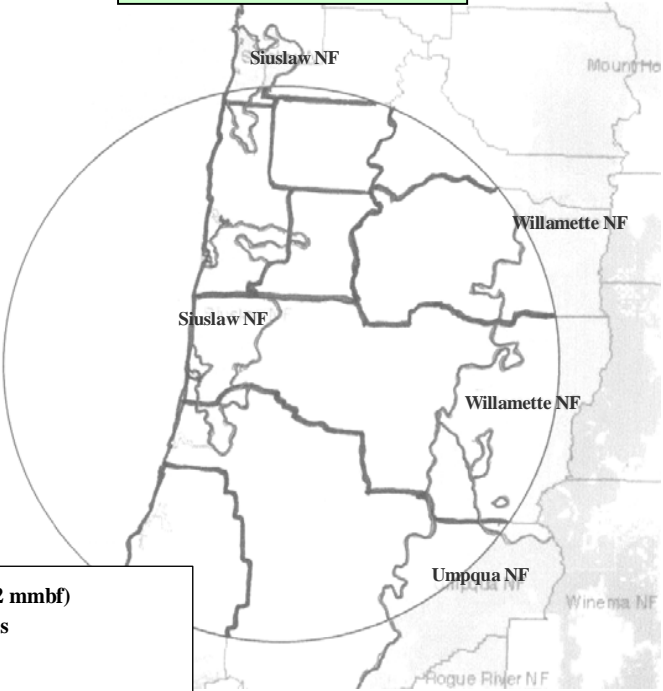
Western Hemlock	gT	mmbf	
	Biomass	Small Log	Large Log
2008	20549.6068	16.2582	14.6688
2009	21180.5328	17.4819	15.3384
2010	25998.9648	19.6665	15.9524
2011	30778.8488	22.8883	18.3347
2012	33096.5728	24.9754	19.6222
Totals	131604.5261	101.2702703	83.9165
%	12%	48%	40%
mmbf	26.3209		

211.5077

Western Oregon: White Woods CROP offering/removal '08 - '12
(gT = 43,484 / S = 26,162 mmbf / L = 9,732 mmbf)
(44.59 total mmbf)

gT = green tons (up to 7" dbh)
 S = small log mmbf (>7"-12" dbh)
 L = large log mmbf (>12" dbh)

Umpqua NF: 4 RDs - 100%
(gT = 43,484 / S = 26,162 / L = 9,732)



	gT	mmbf	
White woods	Biomass	Small Log	Large Log
2008	1698.5	1.71	0.5
2009	10353.7	3.9609	1.2026
2010	5401.5	3.1124	0.9505
2011	7098.5	9.6412	2.6995
2012	18932.5	7.738	4.38
Totals	43484.7	26.1625	9.7326
%	20%	59%	22%
mmbf	8.6969		

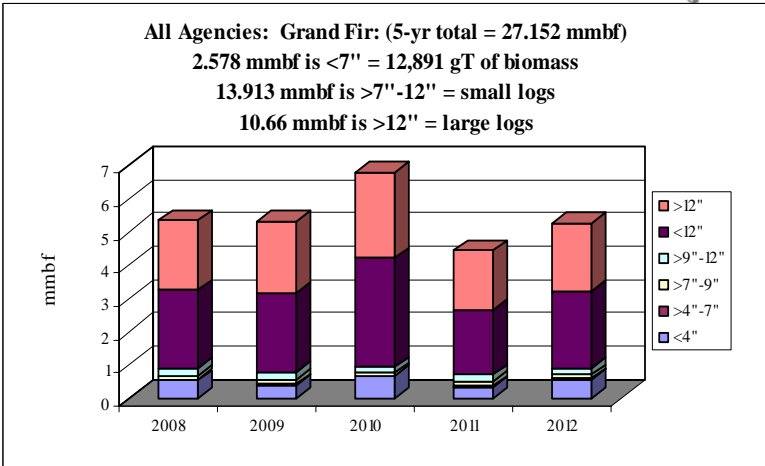
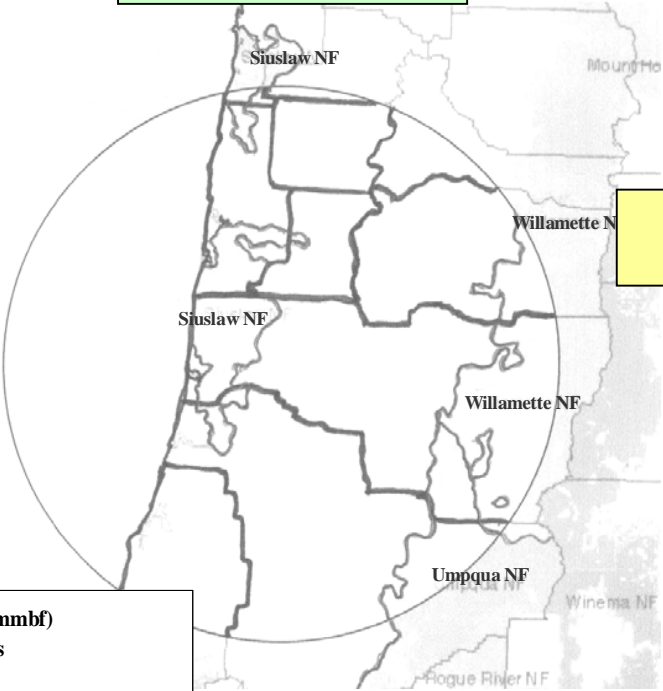
44.5921

**Western Oregon: Grand Fir CROP offering/removal '08 – '12
(gT = 12,891 / S = 13.913 mmbf / L = 10.66 mmbf)
(27.152 total mmbf)**

gT = green tons (up to 7" dbh)
S = small log mmbf (>7"-12" dbh)
L = large log mmbf (>12" dbh)

**BLM: 4 Districts – 84%
(gT = 12,262 / S = 12.277 / L = 8.185)**

**Willamette NF: 3 RDs – 16%
(gT = 629 / S = 1.636 / L = 2.475)**

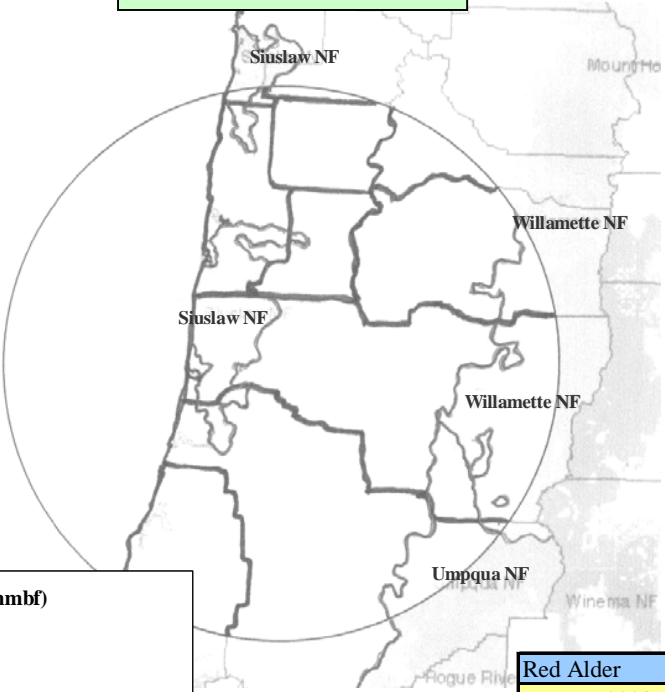


	gT	mmbf	
Grand Fir	Biomass	Small Log	Large Log
2008	2740.04375	2.7045	2.0939
2009	2087.09	2.7543	2.1476
2010	3334.565	3.5402	2.5828
2011	1820.165	2.2731	1.7964
2012	2909.275	2.6414	2.0394
Totals	12891.1388	13.9134	10.6601
%	9%	51%	39%
mmbf	2.5782		

27.1517

Western Oregon: Red Alder CROP offering/removal '08 – '12
(gT = 3,000 / S = 20.836 mmbf / L = 14.25 mmbf)
(35.69 total mmbf)

gT = green tons (up to 7" dbh)
 S = small log mmbf (>7"-12" dbh)
 L = large log mmbf (>12" dbh)



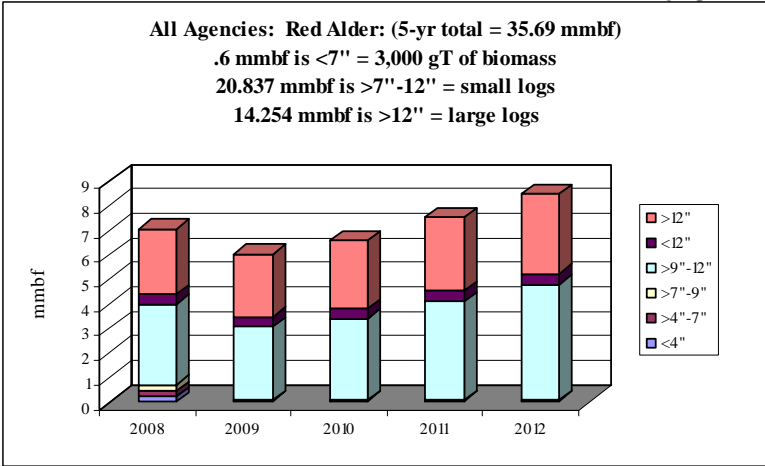
BLM: 4 Districts – 65%
(gT = 0 / S = 17.3 / L = 5.95)

Counties: 2 Co.'s – 10%
(gT = 1,000 / S = .75 / L = 2.75)

ODF: 3 Districts – 1%
(gT = 0 / S = .005 / L = .498)

DSL: Elliott SF – 19%
(gT = 0 / S = 2.081 / L = 4.855)

ODOT – 4%
(gT = 2,000 / S = .7 / L = .2)

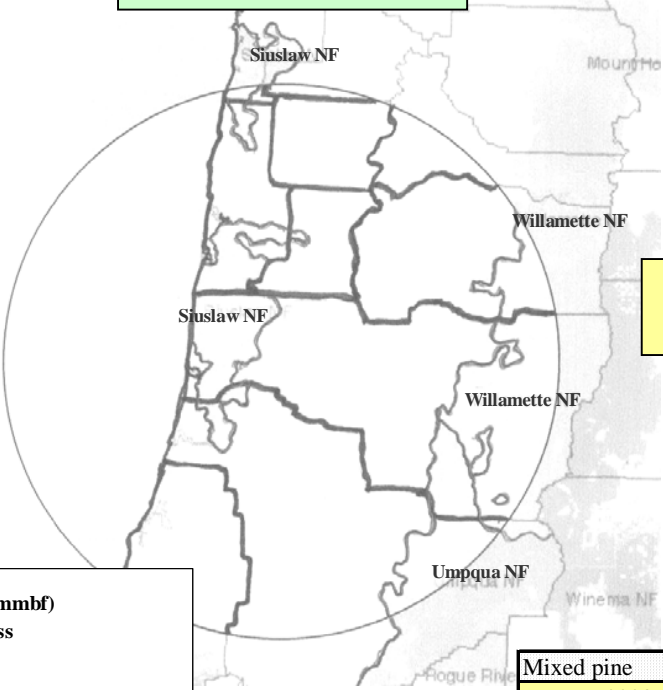


Red Alder	gT	mmbf	
	Biomass	Small Log	Large Log
2008	2200	3.9450	2.6686
2009	200	3.4450	2.5686
2010	200	3.7822	2.7555
2011	200	4.4822	3.0055
2012	200	5.1822	3.2555
Totals	3000	20.8367	14.2536
%	2%	58%	40%
mmbf	0.6		

35.6903

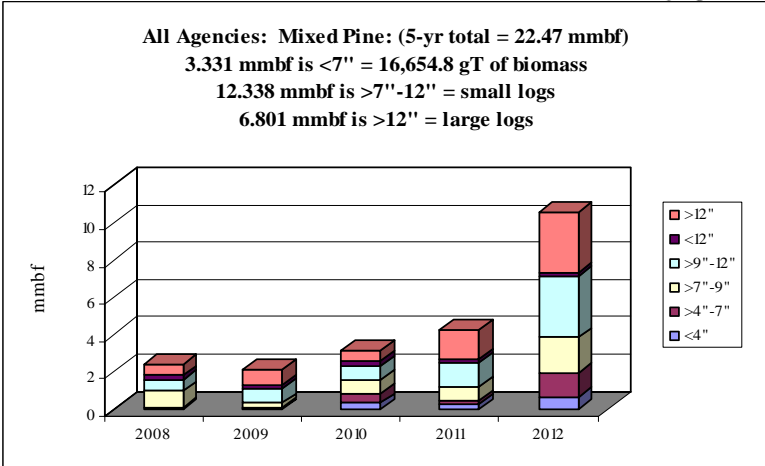
**Western Oregon: Mixed Pine CROP offering/removal '08 – '12
(gT = 16,654 / S = 12.338 mmbf / L = 6.801 mmbf)
(22.47 total mmbf)**

gT = green tons (up to 7" dbh)
S = small log mmbf (>7"-12" dbh)
L = large log mmbf (>12" dbh)



BLM: 4 Districts – 10%
(gT = 1,226 / S = 1.227 / L = .818)

Umpqua NF: 4 RDs – 90%
(gT = 15,428 / S = 11.11 / L = 5.983)



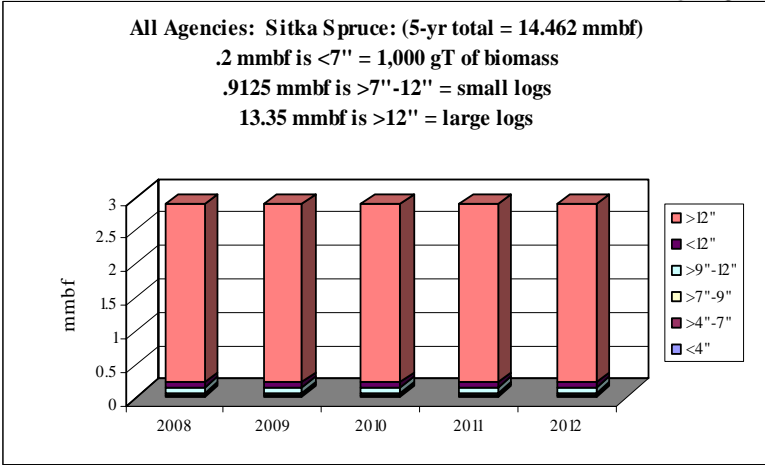
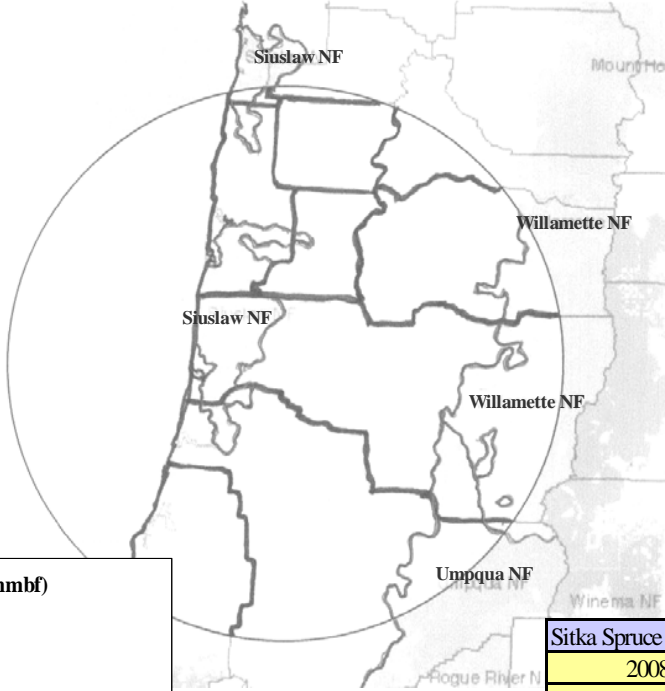
Mixed pine	gT	mmbf	
	Biomass	Small Log	Large Log
2008	331.43	1.7160	0.6389
2009	273.552	1.2537	0.8071
2010	3984.336	1.8061	0.5545
2011	2382.244	2.1830	1.5775
2012	9683.272	5.3792	3.2232
Totals	16654.834	12.3380	6.8011
%	15%	55%	30%
mmbf	3.3310		

22.4700

Western Oregon: *Sitka Spruce* CROP offering/removal '08 – '12
(gT = 1,000 / S = .912 mmbf / L = 13.35 mmbf)
(14.462 total mmbf)

gT = green tons (up to 7" dbh)
 S = small log mmbf (>7"-12" dbh)
 L = large log mmbf (>12" dbh)

Counties: 2 Co.'s – 100%
(gT = 1,000 / S = .912 / L = 13.35)



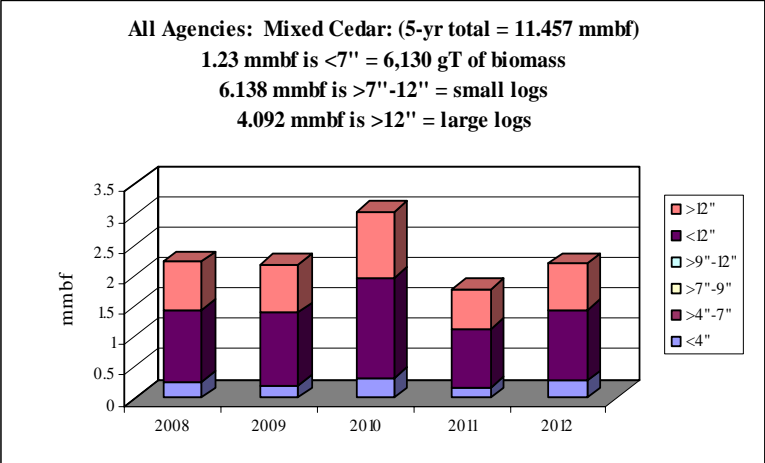
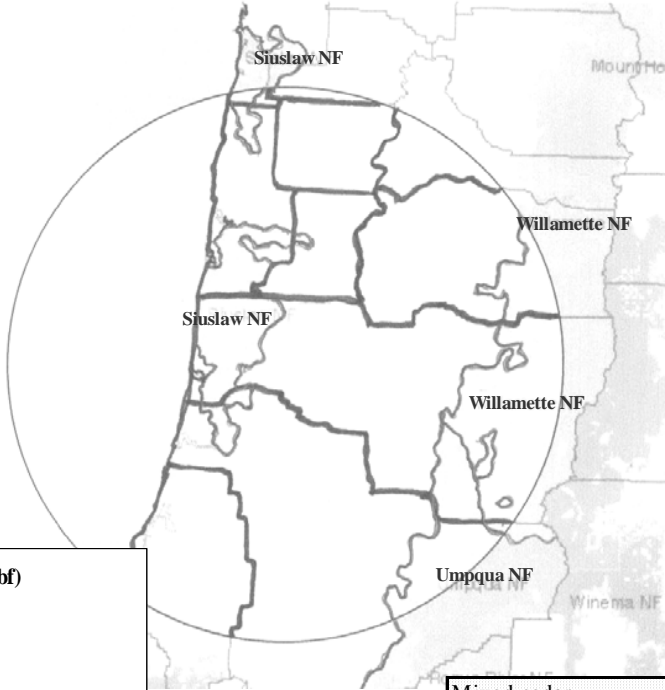
	gT	mmbf	
Sitka Spruce	Biomass	Small Log	Large Log
2008	200	0.1825	2.67
2009	200	0.1825	2.67
2010	200	0.1825	2.67
2011	200	0.1825	2.67
2012	200	0.1825	2.67
Totals	1000	0.9125	13.35
%	1%	6%	92%
mmbf	0.2		

14.4625

**Western Oregon: Mixed Cedar CROP offering/removal '08 – '12
(gT = 6,130 / S = 6.138 mmbf / L = 4.09 mmbf)
(11.457 total mmbf)**

gT = green tons (up to 7" dbh)
S = small log mmbf (>7"-12" dbh)
L = large log mmbf (>12" dbh)

BLM: 4 Districts – 100%
(gT = 6,130 / S = 6.138 / L = 4.09)



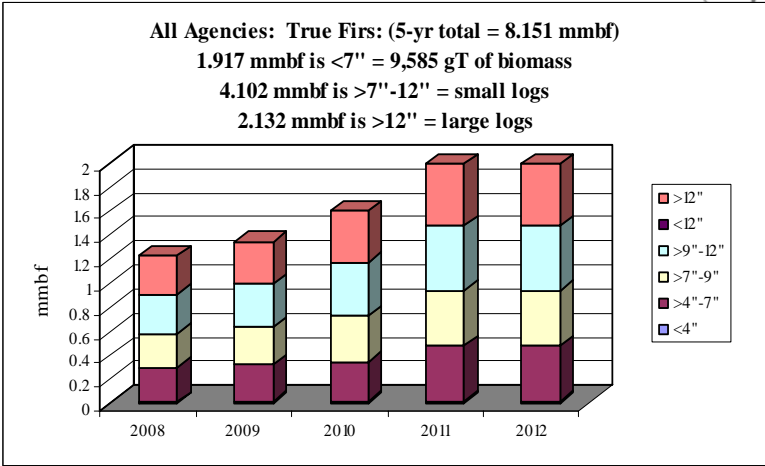
Mixed cedar	gT	mmbf	
	Biomass	Small Log	Large Log
2008	1303.9	1.18032	0.78688
2009	972.76	1.1931	0.7954
2010	1616.68	1.63851	1.09234
2011	846.22	0.9705	0.647
2012	1391.36	1.1562	0.7708
Totals	6130.92	6.13863	4.09242
%	11%	54%	36%
mmbf	1.226184		

11.457234

Western Oregon: True Firs CROP offering/removal '08 – '12
(gT = 9,585 / S = 4.102 mmbf / L = 2.132 mmbf)
(8.151 total mmbf)

gT = green tons (up to 7" dbh)
 S = small log mmbf (>7"-12" dbh)
 L = large log mmbf (>12" dbh)

BLM: 4 Districts – 100%
(gT = 9,585 / S = 4.102 / L = 2.132)



True Firs	gT	mmbf	
	Biomass	Small Log	Large Log
2008	1470	0.613	0.319
2009	1610	0.672	0.349
2010	1725	0.827	0.43
2011	2390	0.995	0.517
2012	2390	0.995	0.517
Totals	9585	4.102	2.132
%	24%	50%	26%
mmbf	1.917		

8.151

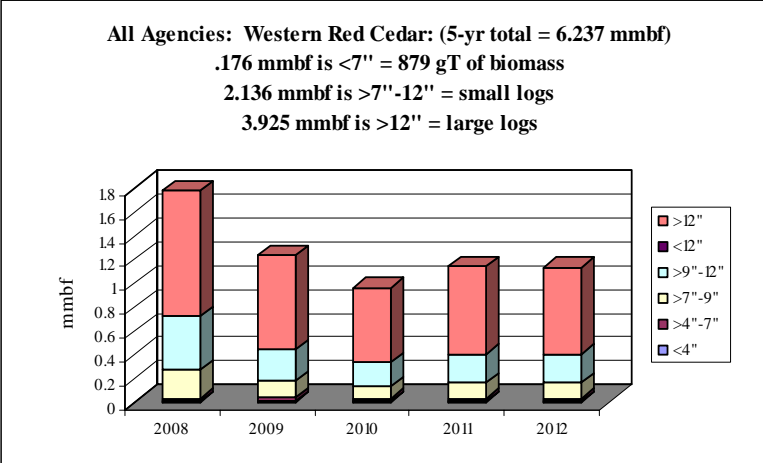
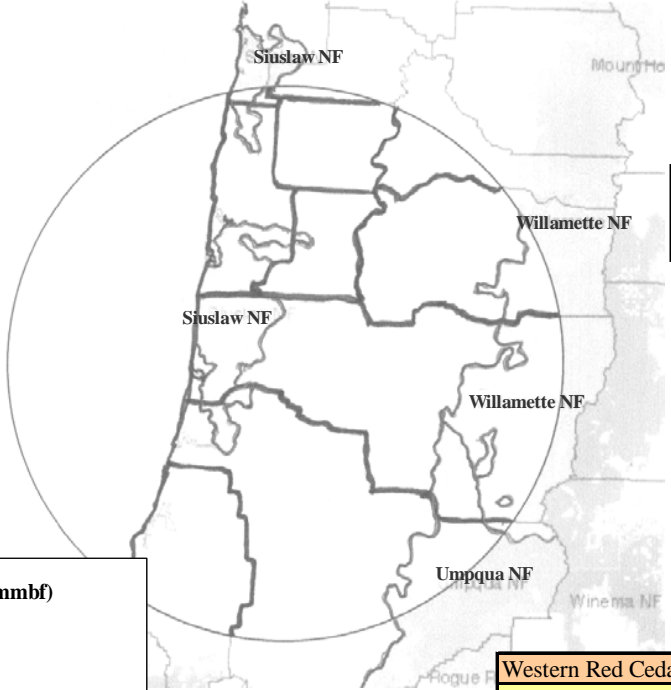
Western Oregon: Western Red Cedar CROP offering/removal '08 – '12
(gT = 879 / S = 2.136 mmbf / L = 3.925 mmbf)
(6.237 total mmbf)

gT = green tons (up to 7" dbh)
 S = small log mmbf (>7"-12" dbh)
 L = large log mmbf (>12" dbh)

Willamette NF: 3 RDs – 68%
(gT = 629 / S = 1.636 / L = 2.475)

Counties: 2 Co.'s – 22%
(gT = 250 / S = .2 / L = 1.15)

ODOT– 10%
(gT = 0 / S = .3 / L = .3)



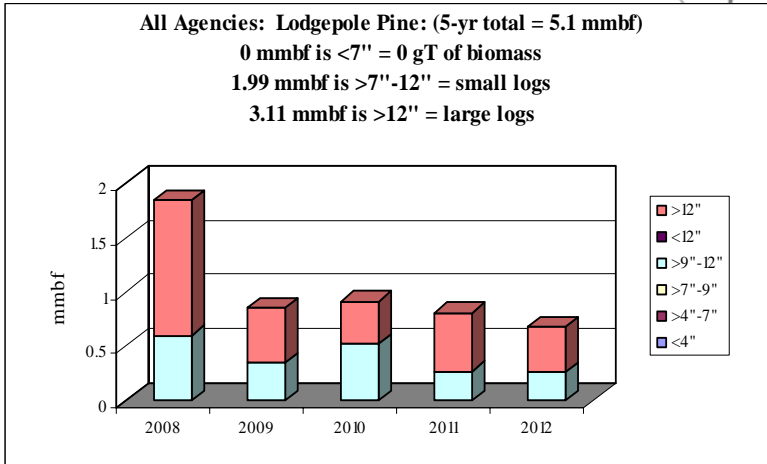
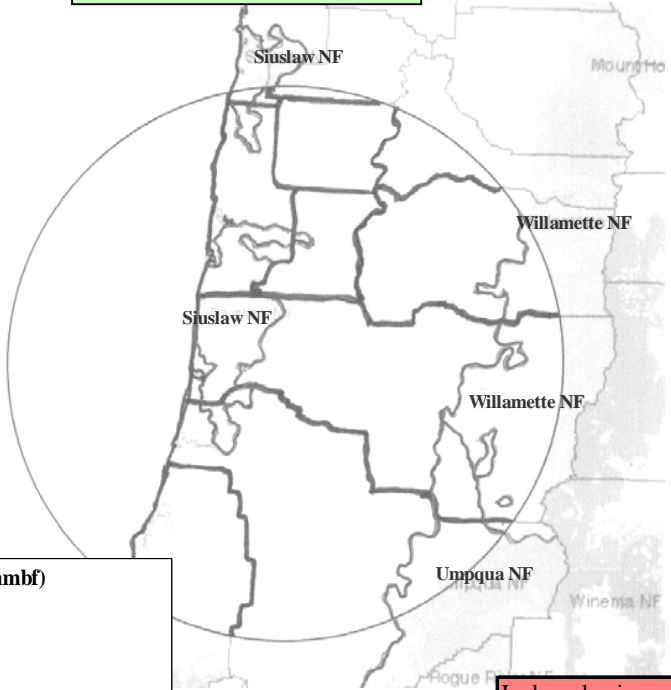
Western Red Cedar	gT	mmbf	
	Biomass	Small Log	Large Log
2008	182.24375	0.6838	1.0502
2009	191.57	0.4081	0.7868
2010	151.205	0.3031	0.6281
2011	177.725	0.3721	0.7324
2012	176.555	0.3690	0.7278
Totals	879.2988	2.1362	3.9252
%	3%	34%	63%
mmbf	0.1759		

6.2373

Western Oregon: Lodgepole Pine CROP offering/removal '08 – '12
(gT = 0 / S = 1.99 mmbf / L = 3.11 mmbf)
(5.1 total mmbf)

gT = green tons (up to 7" dbh)
 S = small log mmbf (>7"-12" dbh)
 L = large log mmbf (>12" dbh)

Umpqua NF: 4 RDs – 100%
(gT = 0 / S = 1.99 / L = 3.11)



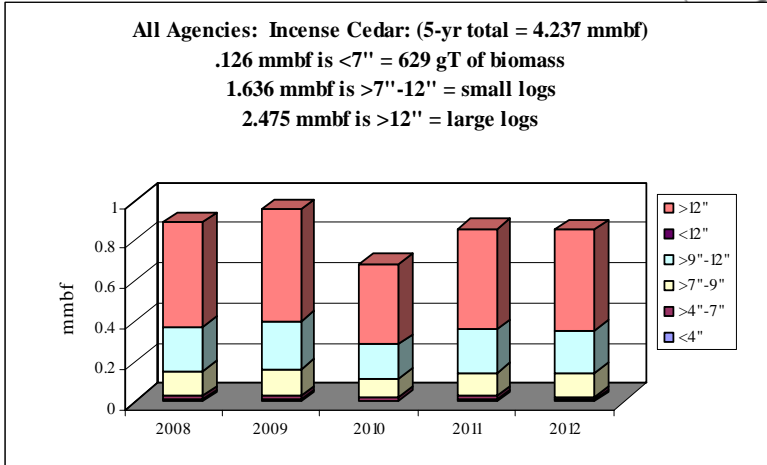
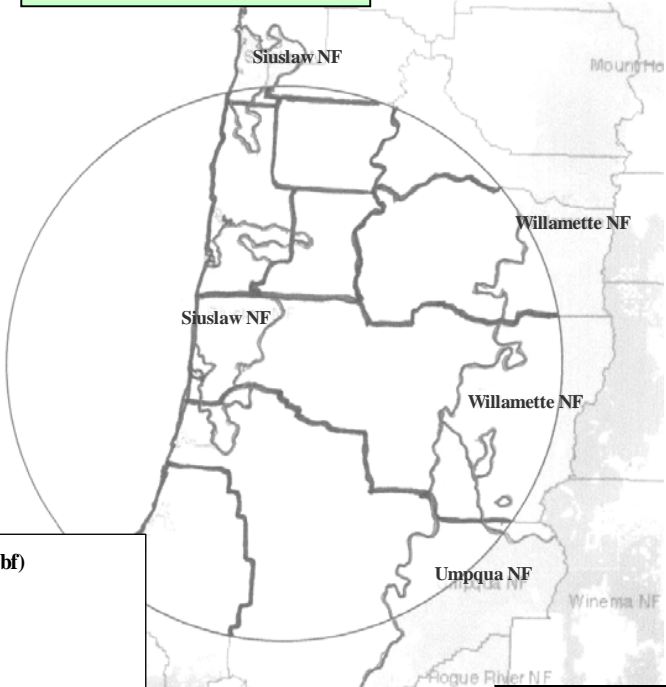
	gT	mmbf	
Lodgepole pine	Biomass	Small Log	Large Log
2008	0	0.6	1.25
2009	0	0.35	0.5
2010	0	0.515	0.4
2011	0	0.269	0.539
2012	0	0.256	0.421
Totals	0	1.99	3.11
%	0%	39%	61%
mmbf	0		

5.1

Western Oregon: Incense Cedar CROP offering/removal '08 - '12
(gT = 629 / S = 1.636 mmbf / L = 2.475 mmbf)
(4.237 total mmbf)

gT = green tons (up to 7" dbh)
 S = small log mmbf (>7"-12" dbh)
 L = large log mmbf (>12" dbh)

Willamette NF: 3 RDs - 100%
(gT = 629 / S = 1.636 / L = 2.475)



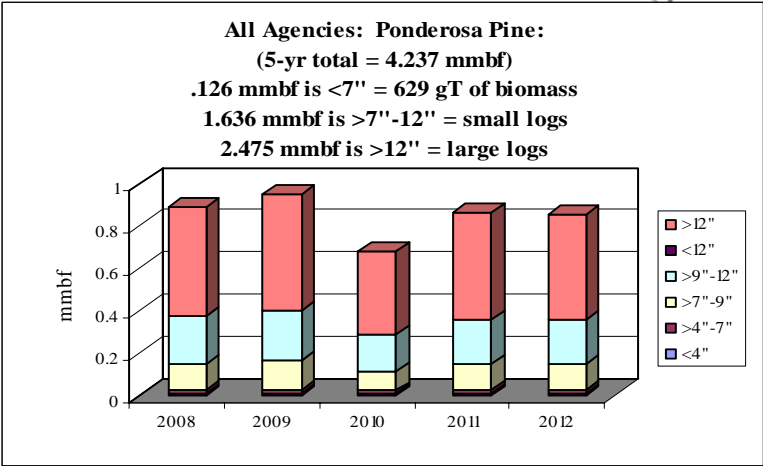
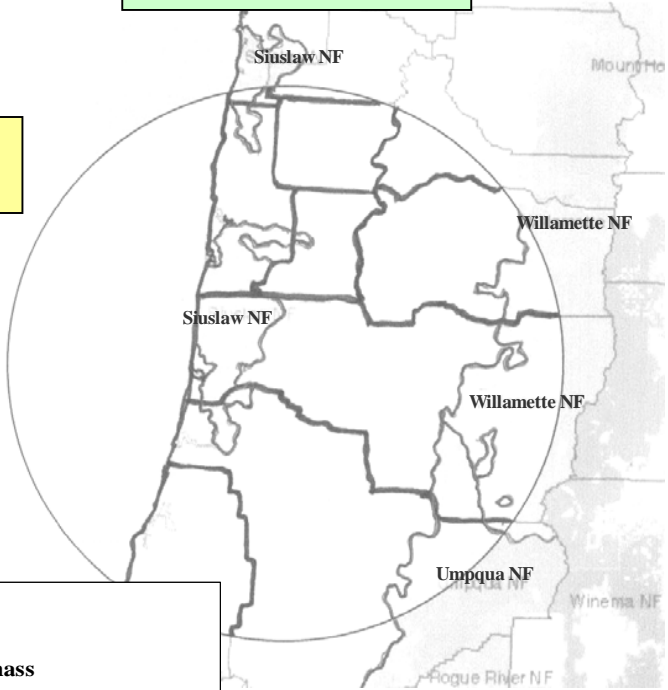
Incense Cedar	gT	mmbf	
	Biomass	Small Log	Large Log
2008	132.24375	0.3438	0.5202
2009	141.57	0.3681	0.5568
2010	101.205	0.2631	0.3981
2011	127.725	0.3321	0.5024
2012	126.555	0.3290	0.4978
Totals	629.2988	1.6362	2.4752
%	3%	39%	58%
mmbf	0.1259		

4.2373

Western Oregon: Ponderosa Pine CROP offering/removal '08 – '12
(gT = 629 / S = 1.636 mmbf / L = 2.475 mmbf)
(4.237 total mmbf)

gT = green tons (up to 7" dbh)
 S = small log mmbf (>7"-12" dbh)
 L = large log mmbf (>12" dbh)

Willamette NF: 3 RDs – 100%
(gT = 629 / S = 1.636 / L = 2.475)



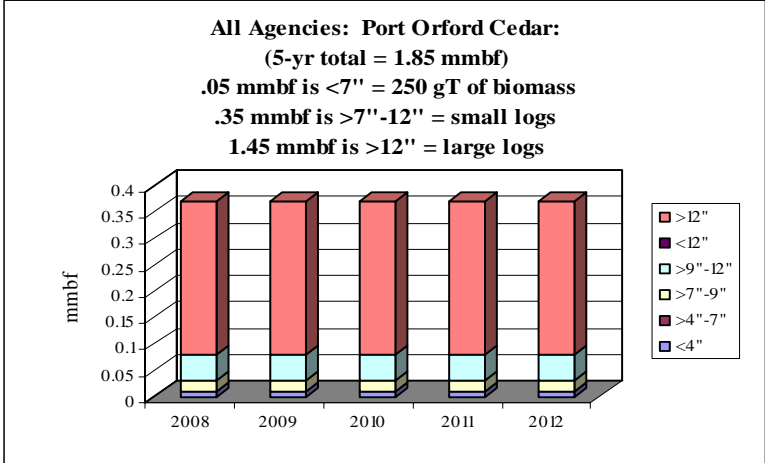
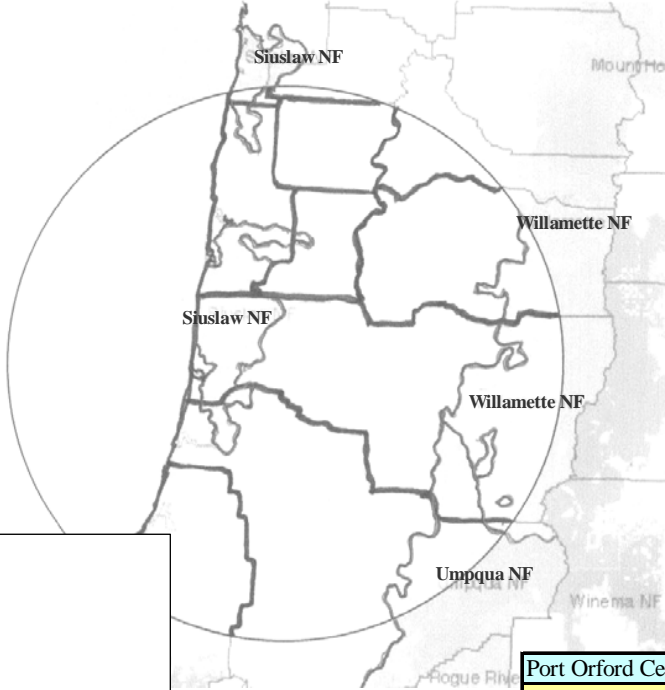
	gT	mmbf	
Ponderosa Pine	Biomass	Small Log	Large Log
2008	132.24375	0.3438	0.5202
2009	141.57	0.3681	0.5568
2010	101.205	0.2631	0.3981
2011	127.725	0.3321	0.5024
2012	126.555	0.3290	0.4978
Totals	629.2988	1.6362	2.4752
%	3%	39%	58%
mmbf	0.1259		

4.2373

Western Oregon: Port Orford Cedar CROP offering/removal '08 - '12
(gT = 250 / S = .35 mmbf / L = 1.45 mmbf)
(1.85 total mmbf)

gT = green tons (up to 7" dbh)
 S = small log mmbf (>7"-12" dbh)
 L = large log mmbf (>12" dbh)

Counties: 2 Co.'s - 100%
(gT = 250 / S = .35 / L = 1.45)

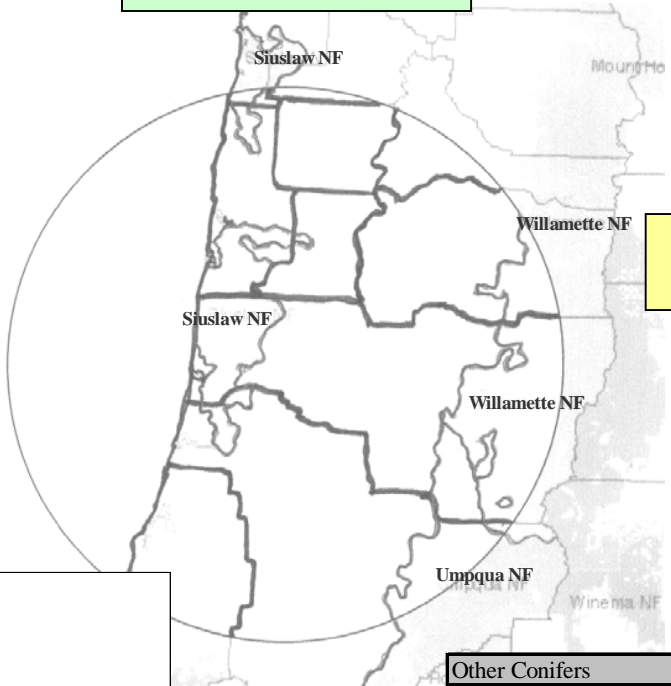


Port Orford Cedar	gT	mmbf	
	Biomass	Small Log	Large Log
2008	50	0.07	0.29
2009	50	0.07	0.29
2010	50	0.07	0.29
2011	50	0.07	0.29
2012	50	0.07	0.29
Totals	250	0.35	1.45
%	3%	19%	78%
mmbf	0.05		

1.85

Western Oregon: Other Conifers CROP offering/removal '08 - '12
(gT = 5,700 / S = 2.873 mmbf / L = 5.328 mmbf)
(9.341 total mmbf)

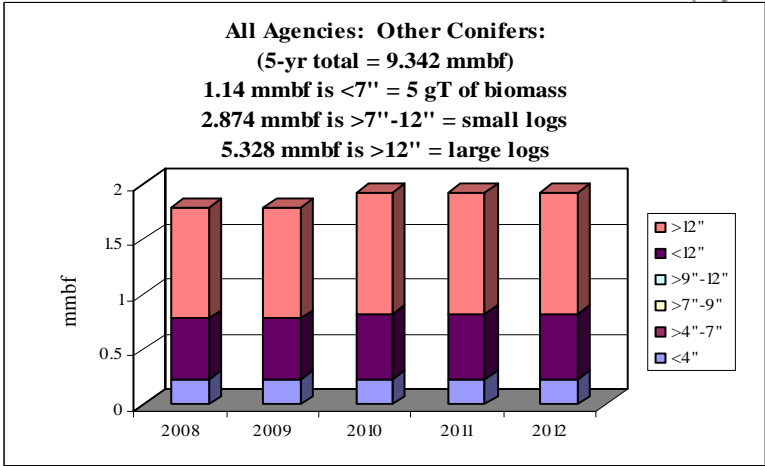
gT = green tons (up to 7" dbh)
 S = small log mmbf (>7"-12" dbh)
 L = large log mmbf (>12" dbh)



BLM: 4 Districts - 12%
(gT = 5,700 / S = 0 / L = 0)

DSL: Elliott SF - 72%
(gT = 0 / S = 2.234 / L = 4.481)

ODF: 3 Districts - 16%
(gT = 0 / S = .639 / L = .847)

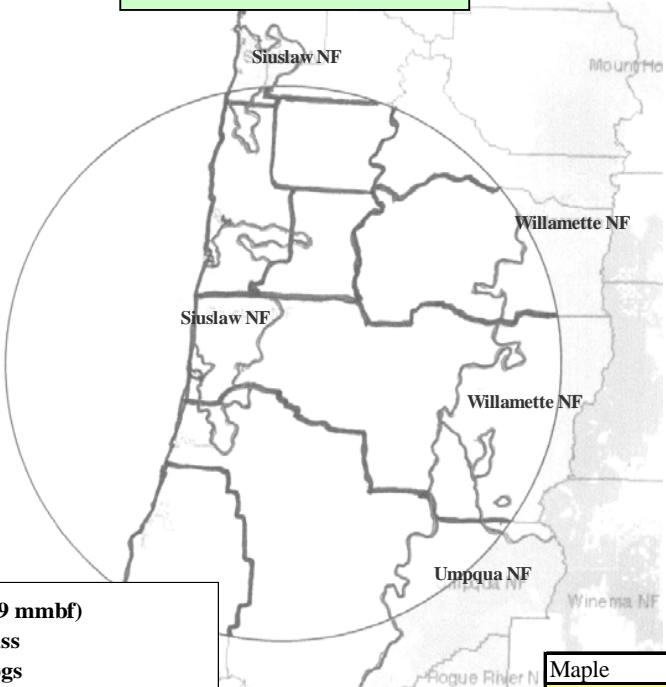


Other Conifers	gT	mmbf	
	Biomass	Small Log	Large Log
2008	1140	0.5524	1.0135
2009	1140	0.5524	1.0135
2010	1140	0.5896	1.1003
2011	1140	0.5896	1.1003
2012	1140	0.5896	1.1003
Totals	5700	2.8736	5.3280
%	12%	31%	57%
mmbf	1.14		

9.3416

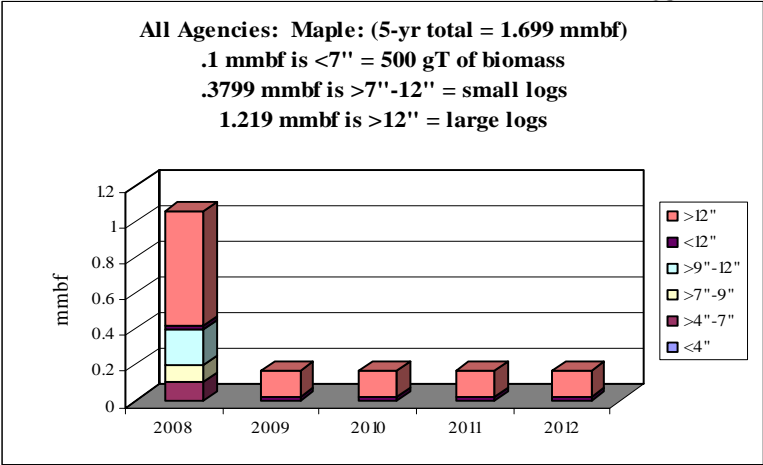
Western Oregon: Maple CROP offering/removal '08 – '12
(gT = 500 / S = .379 mmbf / L = 1.219 mmbf)
(1.699 total mmbf)

gT = green tons (up to 7" dbh)
 S = small log mmbf (>7"-12" dbh)
 L = large log mmbf (>12" dbh)



ODOT – 53%
(gT = 500 / S = .3 / L = .5)

ODF: 3 Districts – 47%
(gT = 0 / S = .079 / L = .719)

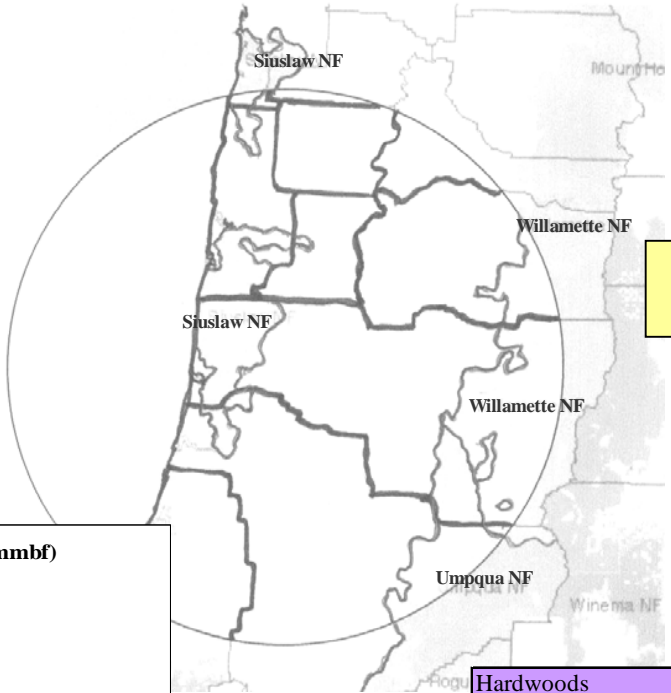


Maple	gT	mmbf	
	Biomass	Small Log	Large Log
2008	500	0.3160	0.6439
2009	0	0.0160	0.1439
2010	0	0.0160	0.1439
2011	0	0.0160	0.1439
2012	0	0.0160	0.1439
Totals	500	0.3800	1.2196
%	6%	22%	72%
mmbf	0.1		

1.6995

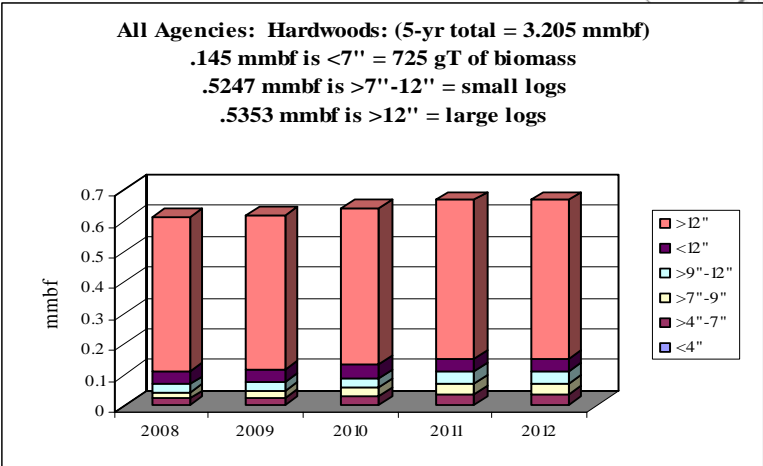
Western Oregon: Hardwoods CROP offering/removal '08 – '12
(gT = 725 / S = .525 mmbf / L = 2.535 mmbf)
(3.205 total mmbf)

gT = green tons (up to 7" dbh)
 S = small log mmbf (>7"-12" dbh)
 L = large log mmbf (>12" dbh)



BLM: 4 Districts – 19%
(gT = 725 / S = .305 / L = .158)

ODF: 3 Districts – 81%
(gT = 0 / S = .219 / L = 2.377)



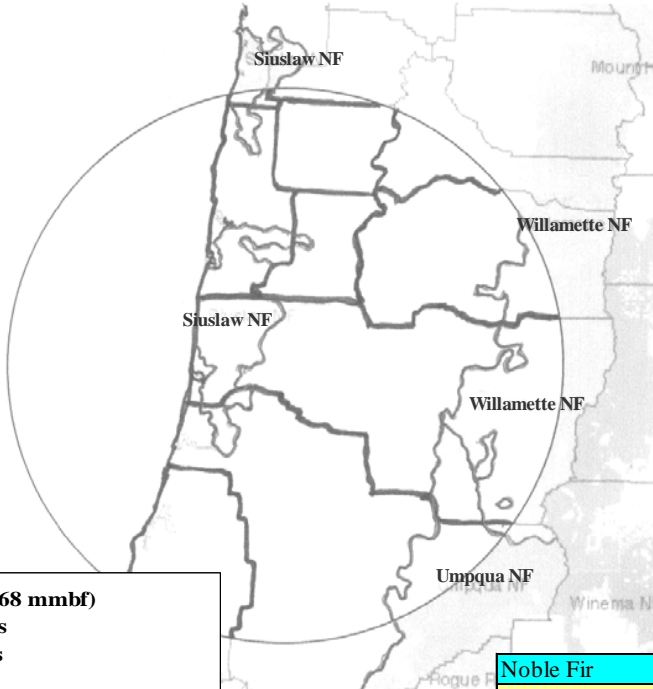
Hardwoods	gT	mmbf	
	Biomass	Small Log	Large Log
2008	110	0.0899	0.4995
2009	120	0.0939	0.5015
2010	145	0.1049	0.5075
2011	175	0.1179	0.5135
2012	175	0.1179	0.5135
Totals	725	0.5247	2.5353
%	5%	16%	79%
mmbf	0.145		

3.205

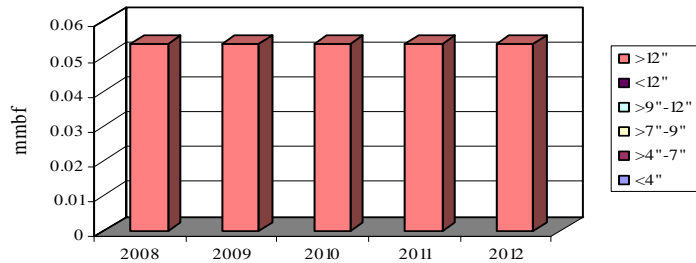
**Western Oregon: *Noble Fir* CROP offering/removal '08 – '12
 (gT = 0 / S = 0 mmbf / L = .268 mmbf)
 (.268 total mmbf)**

gT = green tons (up to 7" dbh)
 S = small log mmbf (>7"-12" dbh)
 L = large log mmbf (>12" dbh)

**BLM: 4 Districts – 100%
 (gT = 0 / S = 0 / L = .268)**



**All Agencies: *Noble Fir*: (5-yr total = .268 mmbf)
 0 mmbf is <7" = 0 gT of biomass
 0 mmbf is >7"-12" = small logs
 .268 mmbf is >12" = large logs**



Noble Fir	gT	mmbf	
	Biomass	Small Log	Large Log
2008	0	0	0.0537
2009	0	0	0.0537
2010	0	0	0.0537
2011	0	0	0.0537
2012	0	0	0.0537
Totals	0	0	0.2684
%	0%	0%	100%
mmbf	0		

0.2684

For more information contact:

Catherine M. Mater:

President—Mater Ltd.

136 SW Washington Avenue; Suite 201

Corvallis, Oregon; 97333

tel: (541) 753-7335 fax: (541) 752-2952

E-mail: catherine@mater.com