

**Southeast Alaska CROP**  
**A Summary of CROP Landscape Analyses Results**  
**(2008 – 2012)**

**SE Alaska CROP**

- 1 National Forest (9 Ranger Districts)
- State land
- Alaska Mental Health Trust Authority lands
- Sealaska Corporation (2009 only)



gT = green tons (solid wood up to 7" dbh & all high defect)  
 S = small log mmbf (>7"-12" dbh)  
 L = large log mmbf (>12" dbh)  
 def = high defect

<i>By Species</i>	5-yr total Biomass (gT)	5-yr total High defect* (gT)	5-yr total Small log (mmbf)	5-yr total Large log (mmbf)
<b>Western hemlock</b> (43% of 5-yr total)	150,560	682,364	33.57	316.37
<b>Western redcedar</b> (26% of 5-yr total)	34,170	428,001	14.66	203.65
<b>Sitka spruce</b> (17% of 5-yr total)	34,718	230,234	12.70	135.73
<b>Alaska yellow cedar</b> (8% of 5-yr total)	12,419	128,887	4.84	57.77
<b>Shore pine</b> (5% of 5-yr total)	3,136	98,474	.52	45.44
<b>Mountain hemlock</b> (2% of 5-yr total)	9,393	34,045	1.10	14.79
<b>Red alder</b> (<1% of 5-yr total)	472	394	0.18	.26
<b>Pacific silver fir</b> (<1% of 5-yr total)	57	407	.01	.18
<b>Black cottonwood</b> (<1% of 5-yr total)	75	<1	.07	.11
<b>Paper birch</b> (<1% of 5-yr total)	0	0	.01	.02

*\*High-defect volumes given for diameters sizes >7" dbh; all high-defect volume converted to green tons (gT).*

***Tongass NF: (gT= 1,612,411; Small log = 29.05 mmbf; Large log = 645.93 mmbf)***

<b>Ranger Districts</b>	<b>5-yr total Biomass (gT)</b>	<b>5-yr total High defect (gT)</b>	<b>5-yr total Small log (mmbf)</b>	<b>5-yr total Large log (mmbf)</b>
<b>Craig</b>	<b>4,326</b>	<b>14,684</b>	<b>1.10</b>	<b>9.65</b>
<b>Hoonah</b>	<b>9,249</b>	<b>35,406</b>	<b>1.98</b>	<b>21.62</b>
<b>Juneau</b>	<b>183</b>	<b>1,793</b>	<b>.03</b>	<b>.78</b>
<b>Ketchikan</b>	<b>18,146</b>	<b>219,947</b>	<b>4.98</b>	<b>97.66</b>
<b>Petersburg</b>	<b>34,704</b>	<b>489,468</b>	<b>9.50</b>	<b>218.99</b>
<b>Sitka</b>	<b>541</b>	<b>578</b>	<b>.01</b>	<b>.26</b>
<b>Thorne Bay</b>	<b>115,145</b>	<b>452,482</b>	<b>7.52</b>	<b>207.05</b>
<b>Wrangell</b>	<b>14,519</b>	<b>201,072</b>	<b>3.92</b>	<b>89.92</b>
<b>Yukatat</b>	<b>163</b>	<b>0</b>	<b>0</b>	<b>0</b>

***State of Alaska: (gT = 71,300; Small log = 25.18 mmbf; Large log = 43.94 mmbf)***

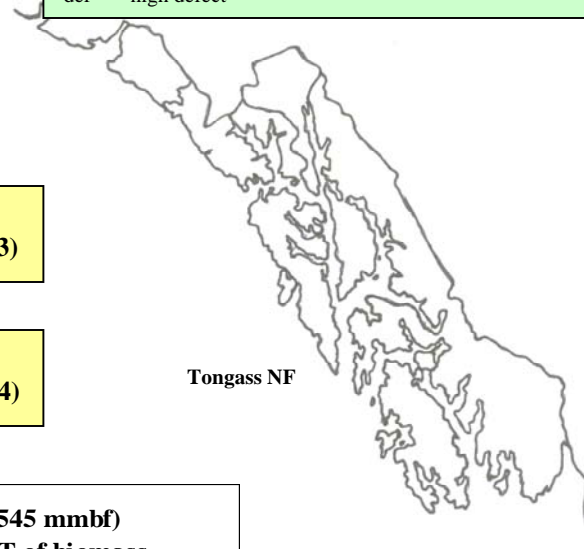
<b>State Lands</b>	<b>5-yr total Biomass (gT)</b>	<b>5-yr total High defect (gT)</b>	<b>5-yr total Small log (mmbf)</b>	<b>5-yr total Large log (mmbf)</b>
<b>Haines State Forest</b>	<b>1,600</b>	<b>7,400</b>	<b>1.07</b>	<b>2.12</b>
<b>Other State Land</b>	<b>0</b>	<b>62,300</b>	<b>24.11</b>	<b>41.83</b>

***Other lands:***

	<b>5-yr total Biomass (gT)</b>	<b>5-yr total High defect (gT)</b>	<b>5-yr total Small log (mmbf)</b>	<b>5-yr total Large log (mmbf)</b>
<b>Mental Health Trust</b>	<b>0</b>	<b>68,705</b>	<b>4.31</b>	<b>60.88</b>
<b>Sealaska Corp.</b>	<b>46,423</b>	<b>48,972</b>	<b>9.12</b>	<b>23.56</b>

**SE Alaska: All Agencies CROP offering/removal '08 – '12**  
**(gT = 1,847,813 / S = 67.665 mmbf / L = 774.317 mmbf)**  
**(1,211.545 total mmbf)**

gT = green tons (solid wood up to 7" dbh & all high defect)  
 S = small log mmbf (>7"-12" dbh)  
 L = large log mmbf (>12" dbh)  
 def = high defect

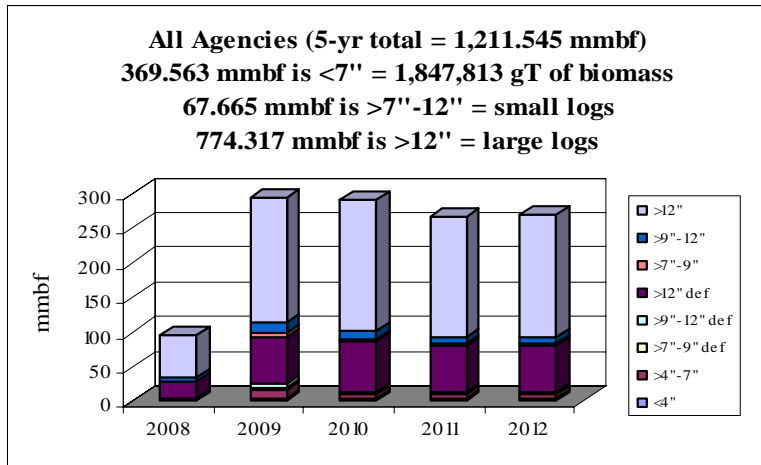


**Tongass NF: 82%**  
**(gT = 1,612,411 / S = 29.05 / L = 645.93)**

**Alaska Mental Health Trust: 7%**  
**(gT = 68,705 / S = 4.31 / L = 60.88)**

**State of Alaska Lands: 7%**  
**(gT = 71,300 / S = 25.18 / L = 43.94)**

**Sealaska Corp.: 4%\***  
**(gT = 95,395 / S = 9.12 / L = 23.56)**  
 (\*data given only for 2009)

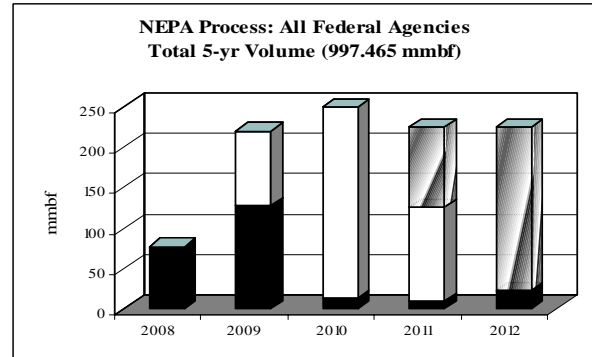
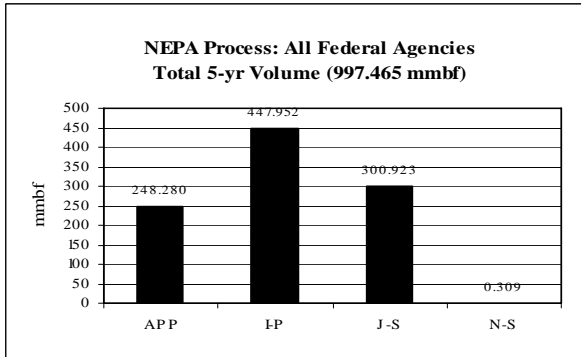


All Agencies	gT	mmbf	
	Biomass	Small Log	Large Log
2008	139215.6402	7.463360377	60.55625844
2009	467159.4236	21.49440753	178.157499
2010	436975.3831	13.52816734	187.5749844
2011	399801.7658	12.67035935	174.0006662
2012	404661.4659	12.50861262	174.0277289
<b>Totals</b>	<b>1847813.679</b>	<b>67.66490722</b>	<b>774.317137</b>
<b>%</b>	<b>31%</b>	<b>6%</b>	<b>64%</b>
<b>mmbf</b>	<b>369.5627357</b>		

**1211.54478**

NEPA Process – All Agencies:  
 Total 5-yr volume (997.465 mmbf; includes gT as mmbf)

	<i>mmbf</i>	<i>% of total</i>
<i>Approved</i>	<b>248.280</b>	<b>25%</b>
<i>In process</i>	<b>447.952</b>	<b>45%</b>
<i>Just started</i>	<b>300.923</b>	<b>30%</b>
<i>Not started</i>	<b>.309</b>	<b>&lt;1%</b>



**SE Alaska: All Agencies CROP offering/removal '08 – '12**  
**(gT = 1,847,813 / S = 67.665 mmbf / L = 774.317 mmbf)**  
**(1,211.545 total mmbf)**

gT = green tons (solid wood up to 7" dbh & all high defect)  
 S = small log mmbf (>7"-12" dbh)  
 L = large log mmbf (>12" dbh)  
 def = high defect

**Tongass NF:**

- A Craig RD (gT = 19,011 / S = 1.10 / L = 9.65)
- B Hoonah RD (gT = 44,655 / S = 1.98 / L = 21.62)
- C Juneau RD (gT = 1,977 / S = .03 / L = .78)
- D Ketchikan RD (gT = 238,094 / S = 4.98 / L = 97.66)
- E Petersburg RD (gT = 524,172 / S = 9.50 / L = 218.99)
- F Sitka RD (gT = 1,119 / S = .01 / L = .26)
- G Thorne Bay RD (gT = 567,627 / S = 7.52 / L = 207.05)
- H Wrangell RD (gT = 215,591 / S = 3.92 / L = 89.92)
- I Yukatat RD (gT = 163 / S = 0 / L = 0)

**State of Alaska Lands:**

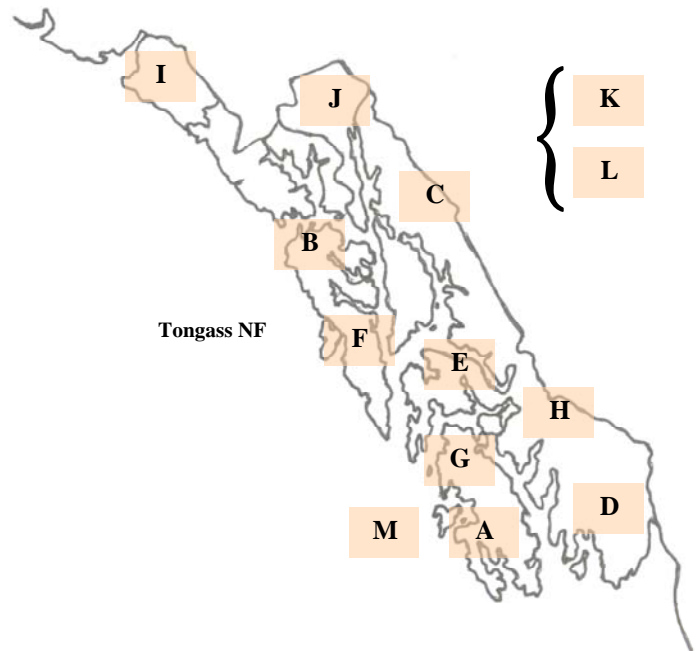
- J Haines State Forest (gT = 9,000 / S = 1.07 / L = 2.12)
- K Other State Lands (gT = 62,300 / S = 24.11 / L = 41.83)

**Alaska Mental Health Trust:**

- L Trust Lands (gT = 68,705 / S = 4.31 / L = 60.88)

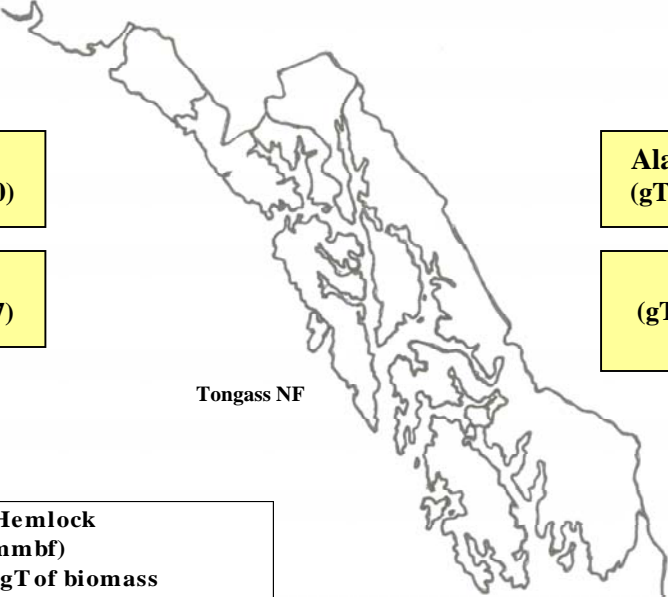
**Sealaska Corporation:**

- M Prince of Wales (gT = 95,395 / S = 9.12 / L = 23.56)



**SE Alaska: Western Hemlock CROP offering/removal '08 – '12**  
**(gT = 832,925 / S = 33.567 mmbf / L = 316.374 mmbf)**  
**(516.526 total mmbf)**

gT = green tons (solid wood up to 7" dbh & all high defect)  
 S = small log mmbf (>7"-12" dbh)  
 L = large log mmbf (>12" dbh)  
 def = high defect



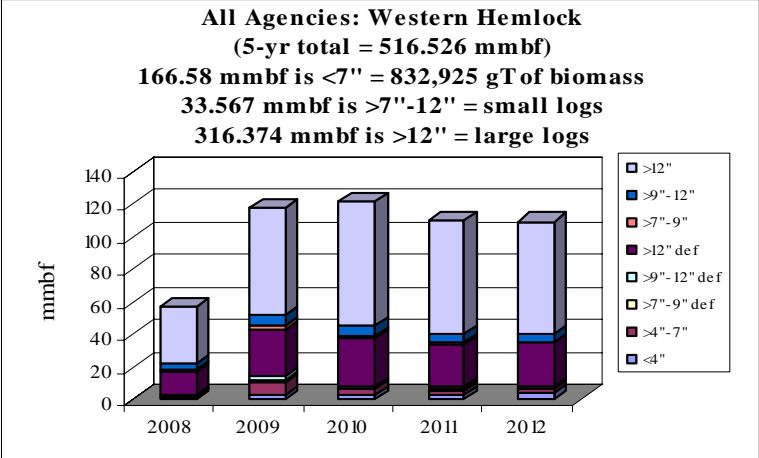
**Tongass NF: 9 RDs – 78%**  
**(gT = 682,382 / S = 13.015 / L = 251.210)**

**State of Alaska Lands: 9%**  
**(gT = 47,395 / S = 14.205 / L = 23.037)**

**Alaska Mental Health Trust: 9%**  
**(gT = 45,180 / S = 2.575 / L = 35.522)**

**Sealaska Corp: 4%\***  
**(gT = 57,966 / S = 3.772 / L = 6.605)**  
 (\*data given only for 2009)

Tongass NF

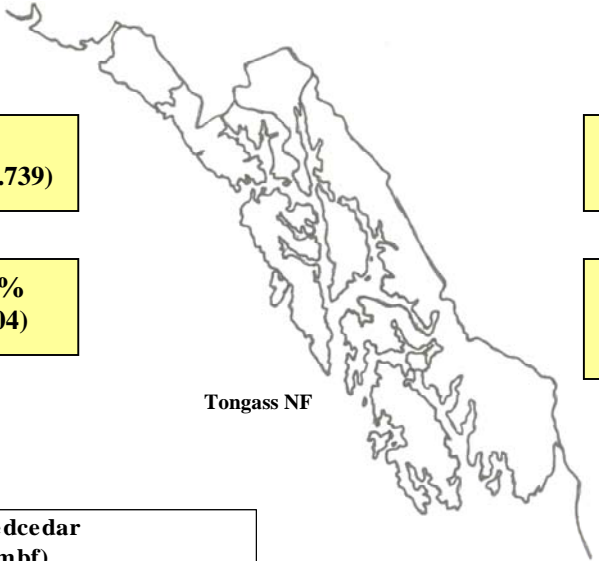


Western Hemlock	gT	mmbf	
	Biomass	Small Log	Large Log
2008	86236.11462	4.488797033	35.60031982
2009	211913.3947	9.857289414	65.51665811
2010	190894.0547	6.797559998	76.68183212
2011	171129.8861	6.285861278	69.75757964
2012	172751.5531	6.13752065	68.81803974
Totals	832,925.0	33.56702837	316.3744294
%	32%	6%	61%
mmbf	166.5850006		

**516.5264584**

**SE Alaska: Western Redcedar CROP offering/removal '08 – '12**  
**(gT = 462,171 / S = 14.661 mmbf / L = 203.650 mmbf)**  
**(310.746 total mmbf)**

gT = green tons (solid wood up to 7" dbh & all high defect)  
 S = small log mmbf (>7"-12" dbh)  
 L = large log mmbf (>12" dbh)  
 def = high defect



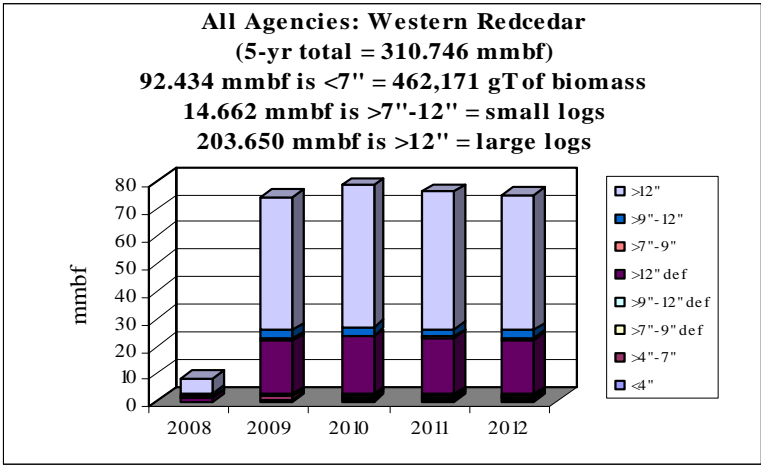
**Tongass NF: 7 RDs – 93%**  
**(gT = 455,612 / S = 8.365 / L = 188.739)**

**Alaska Mental Health Trust: 2%**  
**(gT = 5,649 / S = .357 / L = 5.049)**

**State of Alaska Lands: 5%**  
**(gT = 0 / S = 5.491 / L = 8.904)**

**Sealaska Corp: 1%\***  
**(gT = 910 / S = .448 / L = .959)**  
 (\*data given only for 2009)

Tongass NF

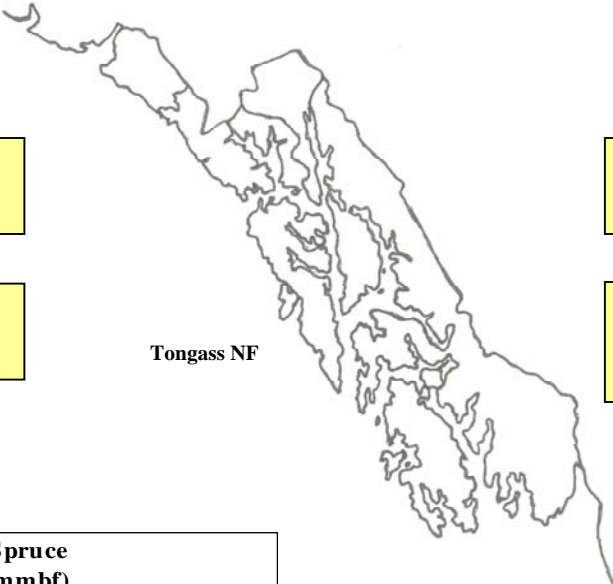


	gT	mmbf	
Western Redcedar	Biomass	Small Log	Large Log
2008	8320.093304	1.199420974	5.450338051
2009	110147.0674	3.750879207	48.30371489
2010	117584.1665	3.296480565	51.28260576
2011	114119.8518	3.202747257	49.76938604
2012	112000.4661	3.212028963	48.84411213
Totals	462,171.6	14.66155697	203.6501569
%	30%	5%	66%
mmbf	92.43432903		

**310.7460429**

**SE Alaska: Sitka Spruce CROP offering/removal '08 - '12**  
**(gT = 264,953 / S = 12.703 mmbf / L = 135.735 mmbf)**  
**(201.429 total mmbf)**

gT = green tons (solid wood up to 7" dbh & all high defect)  
 S = small log mmbf (>7"-12" dbh)  
 L = large log mmbf (>12" dbh)  
 def = high defect

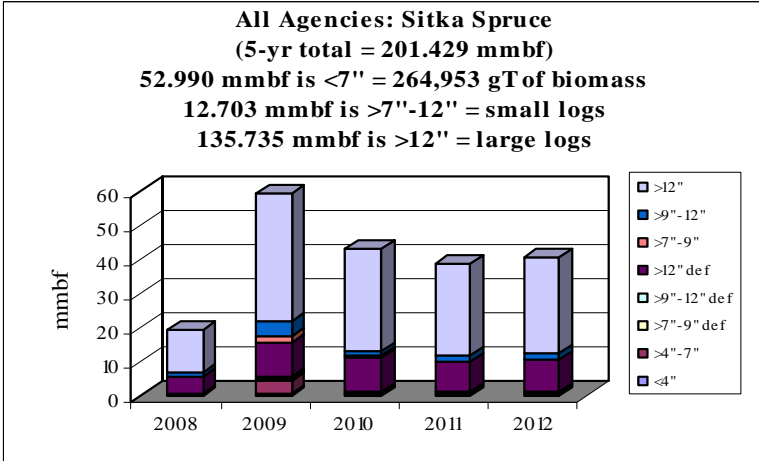


**Tongass NF: 8 RDs - 65%**  
**(gT = 190,582 / S = 2.073 / L = 90.012)**

**Alaska Mental Health Trust: 12%**  
**(gT = 15,930 / S = 1.288 / L = 19.094)**

**State of Alaska Lands: 10%**  
**(gT = 23,755 / S = 4.775 / L = 10.857)**

**Sealaska Corp: 14%\***  
**(gT = 34,686 / S = 4.567 / L = 15.773)**  
 (\*data given only for 2009)



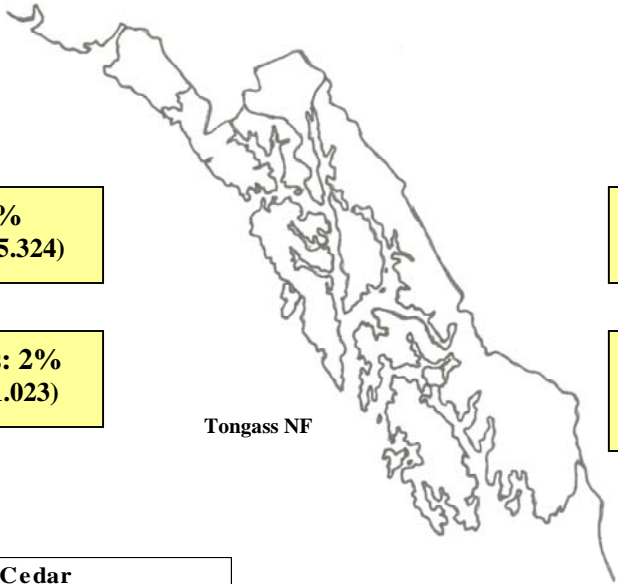
Sitka Spruce	gT	mmbf	
	Biomass	Small Log	Large Log
2008	27625.06381	1.094757761	12.70128034
2009	78970.28132	6.134678036	37.38980517
2010	56532.82804	1.832824814	29.94714625
2011	49347.11722	1.800480847	27.26944924
2012	52477.67073	1.84009843	28.4277884
<b>Totals</b>	<b>264,953.0</b>	<b>12.70283989</b>	<b>135.7354694</b>
<b>%</b>	<b>26%</b>	<b>6%</b>	<b>67%</b>
<b>mmbf</b>	<b>52.99059222</b>		

**201.4289015**



**SE Alaska: Alaska Yellow Cedar CROP offering/removal '08 – '12**  
**(gT = 141,307 / S = 4.837 mmbf / L = 57.774 mmbf)**  
**(90.872 total mmbf)**

gT = green tons (solid wood up to 7" dbh & all high defect)  
 S = small log mmbf (>7"-12" dbh)  
 L = large log mmbf (>12" dbh)  
 def = high defect

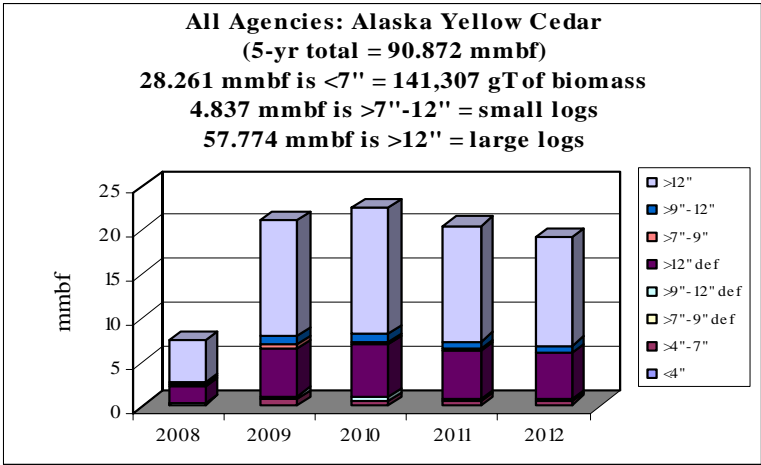


**Tongass NF: 8 RDs – 95%**  
**(gT = 138,028 / S = 3.83 / L = 55.324)**

**Alaska Mental Health Trust: 2%**  
**(gT = 1,946 / S = .093 / L = 1.215)**

**State of Alaska Lands: 2%**  
**(gT = 0 / S = .631 / L = 1.023)**

**Sealaska Corp: 1%\***  
**(gT = 1,331 / S = .284 / L = .211)**  
 (\*data given only for 2009)



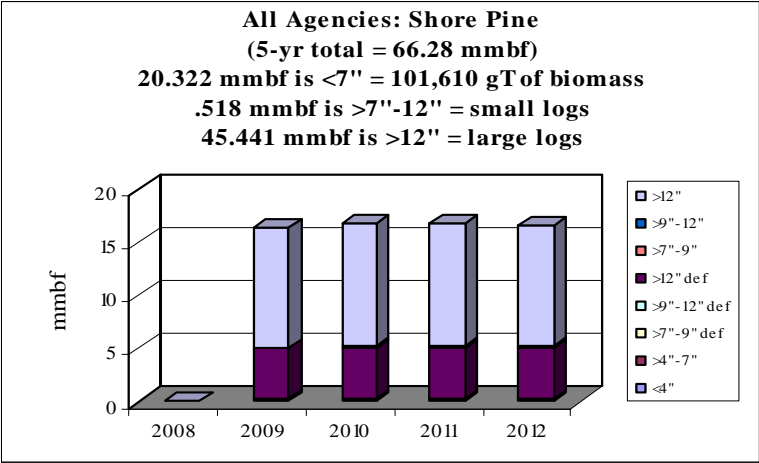
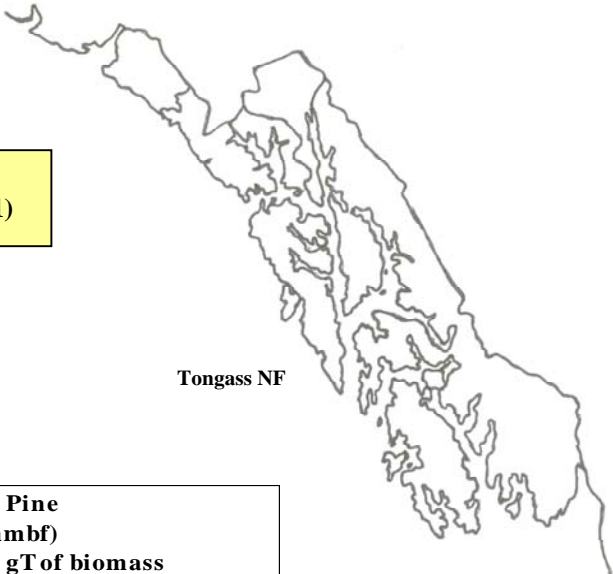
Alaska Yellow Cedar	gT	mmbf	
	Biomass	Small Log	Large Log
2008	11407.96408	0.49003169	4.794538393
2009	32872.27834	1.314789867	13.12183579
2010	35279.48168	1.122399117	14.43750518
2011	31848.43847	0.996511035	13.15157991
2012	29899.09457	0.913504333	12.2681658
<b>Totals</b>	<b>141,307.3</b>	<b>4.837236042</b>	<b>57.77362506</b>
<b>%</b>	<b>31%</b>	<b>5%</b>	<b>64%</b>
<b>mmbf</b>	<b>28.26145143</b>		

**90.87231254**

**SE Alaska: Shore Pine CROP offering/removal '08 – '12**  
**(gT = 101,611 / S = .518 mmbf / L = 45.441 mmbf)**  
**(66.281 total mmbf)**

gT = green tons (solid wood up to 7" dbh & all high defect)  
 S = small log mmbf (>7"-12" dbh)  
 L = large log mmbf (>12" dbh)  
 def = high defect

**Tongass NF: 8 RDs – 100%**  
**(gT = 101,611 / S = .518 / L = 45.441)**



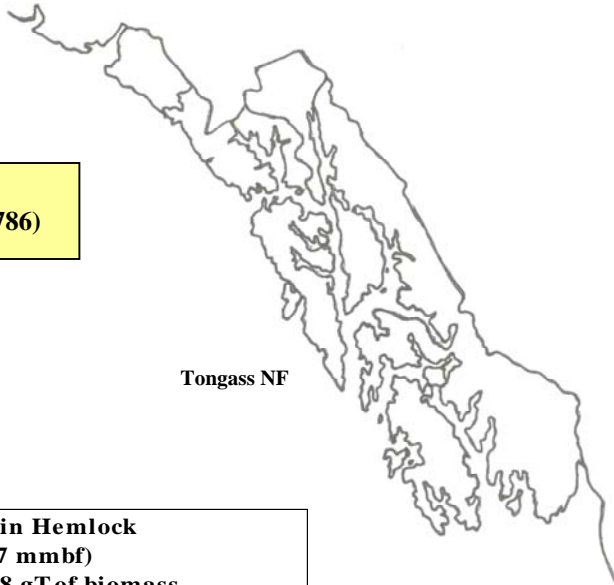
	gT	mmbf	
Shore Pine	Biomass	Small Log	Large Log
2008	113.7450942	0.00814179	0.029991899
2009	24911.32979	0.125910713	11.13980727
2010	25584.53511	0.132382271	11.43720166
2011	25533.52596	0.128312094	11.42478067
2012	25467.79234	0.123115824	11.40905231
Totals	101,610.9	0.517862693	45.44083381
%	31%	1%	69%
mmbf	20.32218566		

**66.28088216**

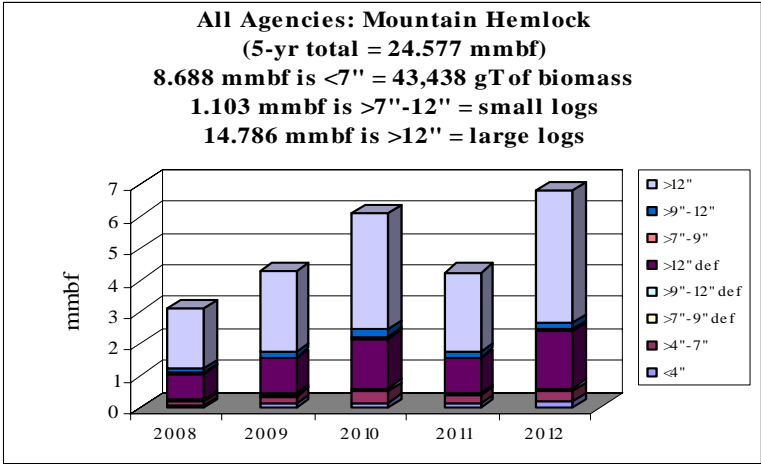
**SE Alaska: Mountain Hemlock CROP offering/removal '08 – '12**  
**(gT = 43,438 / S = 1.103 mmbf / L = 14.786 mmbf)**  
**(24.577 total mmbf)**

gT = green tons (solid wood up to 7" dbh & all high defect)  
 S = small log mmbf (>7"-12" dbh)  
 L = large log mmbf (>12" dbh)  
 def = high defect

**Tongass NF: 8 RDs – 100%**  
**(gT = 43,438 / S = 1.103 / L = 14.786)**



Tongass NF

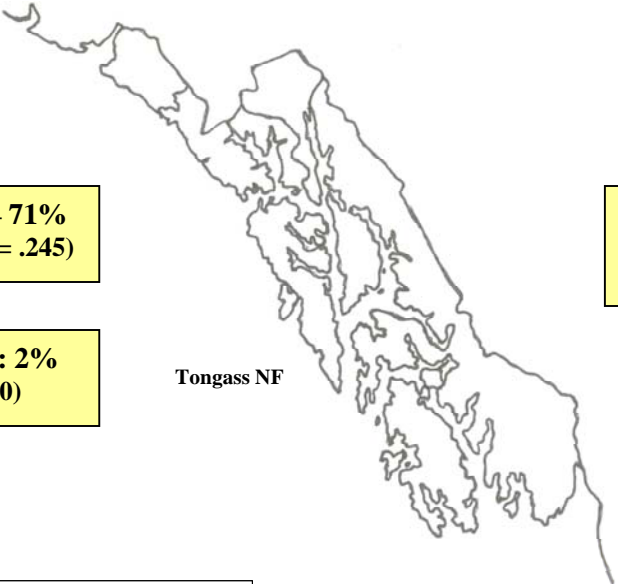


Mountain Hemlock	gT	mmbf	
	Biomass	Small Log	Large Log
2008	5313.732581	0.159189825	1.89453105
2009	7658.431812	0.21040963	2.557664483
2010	10823.58568	0.292007346	3.636713743
2011	7637.947012	0.206264419	2.508560578
2012	12004.81411	0.234842262	4.188929299
<b>Totals</b>	<b>43,438.5</b>	<b>1.102713481</b>	<b>14.78639915</b>
<b>%</b>	<b>35%</b>	<b>4%</b>	<b>60%</b>
<b>mmbf</b>	<b>8.687702239</b>		

**24.57681487**

**SE Alaska: Red Alder CROP offering/removal '08 – '12**  
**(gT = 867 / S = .184 mmbf / L = .256 mmbf)**  
**(.614 total mmbf)**

gT = green tons (solid wood up to 7" dbh & all high defect)  
 S = small log mmbf (>7"-12" dbh)  
 L = large log mmbf (>12" dbh)  
 def = high defect

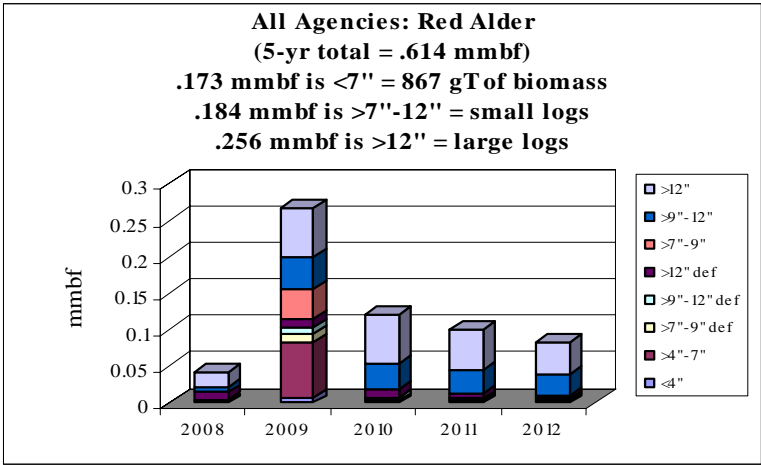


**Tongass NF: 8 RDs – 71%**  
**(gT = 291 / S = .132 / L = .245)**

**Sealaska Corp: 27%\***  
**(gT = 500 / S = .052 / L = .011)**  
 (\*data given only for 2009)

**State of Alaska Lands: 2%**  
**(gT = 75 / S = 0 / L = 0)**

Tongass NF



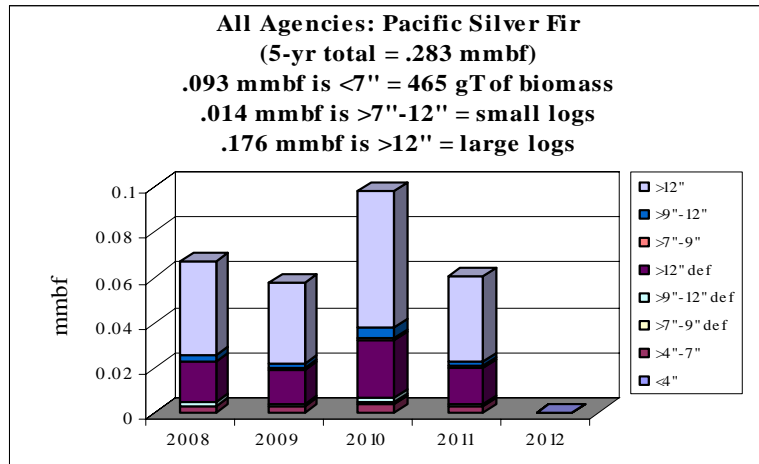
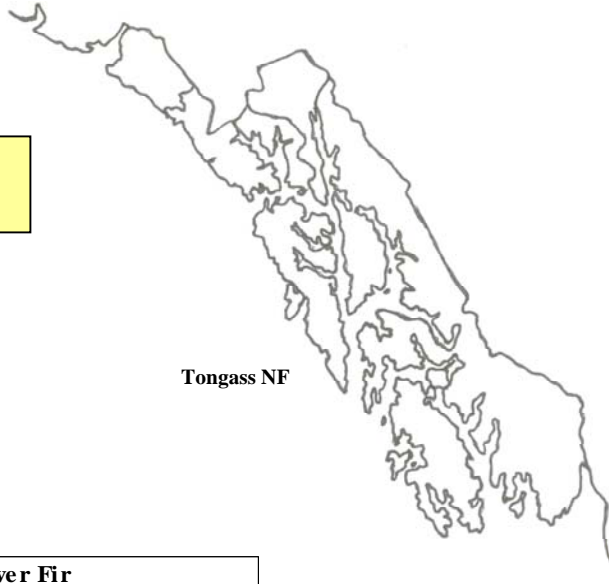
Red Alder	gT	mmbf	
	Biomass	Small Log	Large Log
2008	73.3654863	0.005939449	0.021300417
2009	577.8141921	0.083033202	0.069004894
2010	100.0870811	0.034139491	0.065934696
2011	70.96058781	0.030896645	0.055582829
2012	45.01997668	0.030436721	0.043939498
<b>Totals</b>	<b>867.2</b>	<b>0.184445508</b>	<b>0.255762334</b>
<b>%</b>	<b>28%</b>	<b>30%</b>	<b>42%</b>
<b>mmbf</b>	<b>0.173449465</b>		

**0.613657307**

**SE Alaska: Pacific Silver Fir CROP offering/removal '08 - '12**  
**(gT = 465 / S = .014 mmbf / L = .176 mmbf)**  
**(.283 total mmbf)**

gT = green tons (solid wood up to 7" dbh & all high defect)  
 S = small log mmbf (>7"-12" dbh)  
 L = large log mmbf (>12" dbh)  
 def = high defect

**Tongass NF: 1 RD - 100%**  
**(gT = 465 / S = .014 / L = .176)**



Pacific Silver Fir	gT	mmbf	
	Biomass	Small Log	Large Log
2008	110.5062478	0.003429507	0.041791971
2009	93.82605945	0.002911845	0.035483749
2010	161.5893246	0.005014845	0.061110901
2011	99.03861831	0.003073615	0.037455068
2012	0	0	0
Totals	465.0	0.014429812	0.17584169
%	33%	5%	62%
mmbf	0.09299205		

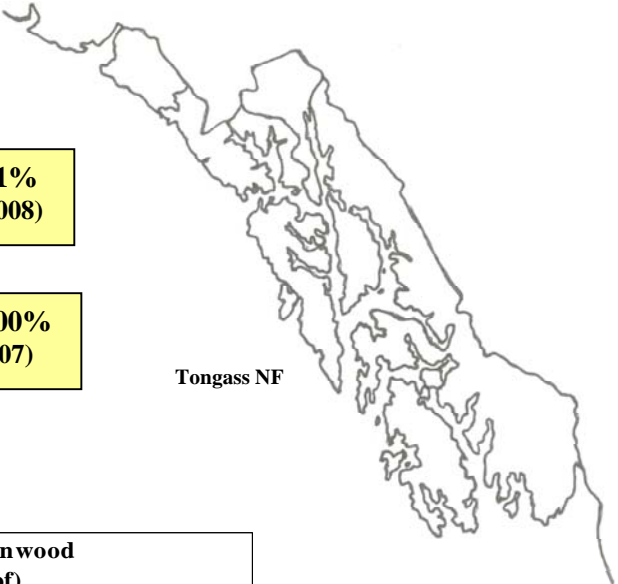
**0.283263552**

**SE Alaska: Black Cottonwood CROP offering/removal '08 – '12**  
**(gT = 75 / S = .066 mmbf / L = .107 mmbf)**  
**(.188 total mmbf)**

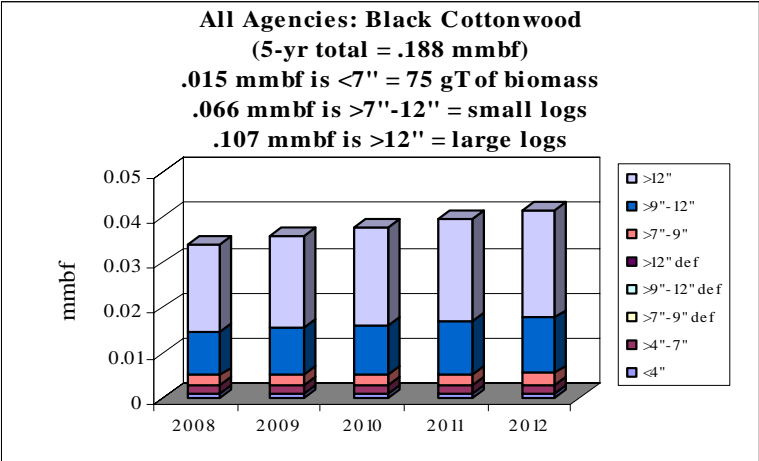
gT = green tons (solid wood up to 7" dbh & all high defect)  
 S = small log mmbf (>7"-12" dbh)  
 L = large log mmbf (>12" dbh)  
 def = high defect

**Tongass NF: 1 RD – <1%**  
**(gT = < 1 / S = 0 / L = .00008)**

**State of Alaska Lands: 100%**  
**(gT = 75 / S = .066 / L = .107)**



Tongass NF



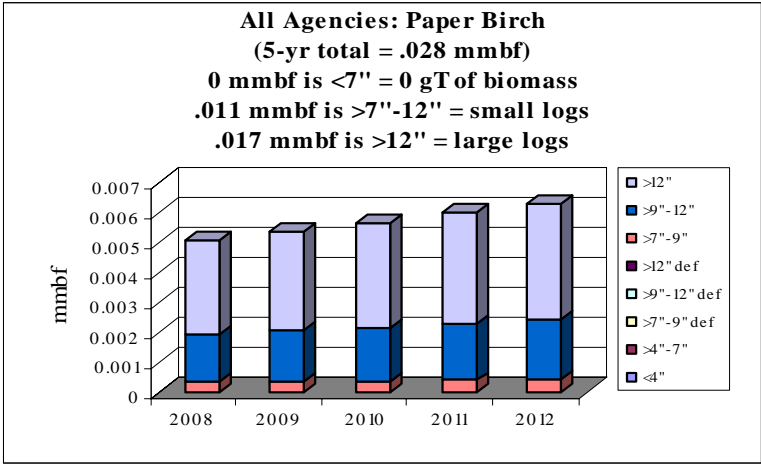
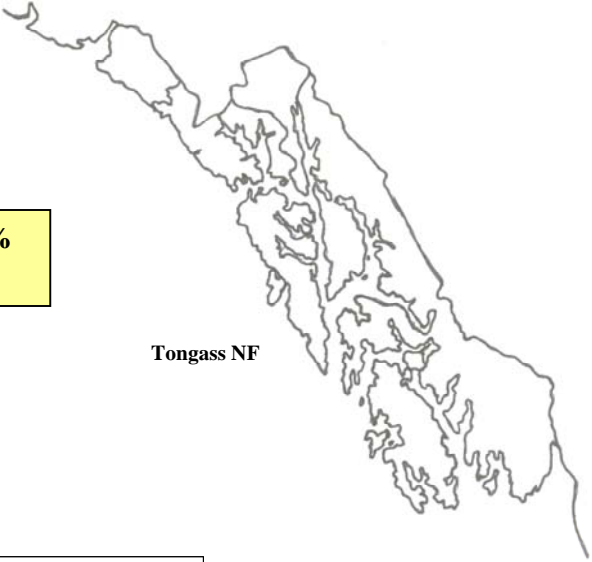
Black Cottonwood	gT	mmbf	
	Biomass	Small Log	Large Log
2008	15.05495734	0.011728035	0.019045724
2009	15	0.012461037	0.020208832
2010	15.05495734	0.013194039	0.021423234
2011	15	0.013927041	0.022586342
2012	15.05495734	0.014660044	0.023800743
Totals	75.2	0.065970196	0.107064875
%	8%	35%	57%
mmbf	0.015032974		

**0.188068045**

**SE Alaska: Paper Birch CROP offering/removal '08 - '12**  
**(gT = 0 / S = .011 mmbf / L = .017 mmbf)**  
**(.028 total mmbf)**

gT = green tons (solid wood up to 7" dbh & all high defect)  
 S = small log mmbf (>7"-12" dbh)  
 L = large log mmbf (>12" dbh)  
 def = high defect

**State of Alaska Lands: 100%**  
**(gT = 0 / S = .011 / L = .017)**



Paper Birch	gT	mmbf	
	Biomass	Small Log	Large Log
2008	0	0.001924313	0.003120777
2009	0	0.002044583	0.003315826
2010	0	0.002164852	0.003510874
2011	0	0.002285122	0.003705923
2012	0	0.002405391	0.003900972
Totals	0	0.010824262	0.017554372
%	0%	38%	62%
mmbf	0		

**0.028378634**

*For more information contact:*

**Catherine M. Mater:**

President—Mater Ltd.

136 SW Washington Avenue; Suite 201

Corvallis, Oregon; 97333

tel: (541) 753-7335 fax: (541) 752-2952

*E-mail: catherine@mater.com*

**Edmund Gee:**

Nat'l Woody Biomass Utilization Team Leader

Nat'l Partnership Coordinator USFS

Washington DC

tel: (202) 205-1787 fax: (202) 205-1045 cell:

(202) 236-5153

*E-mail: eagee@fs.fed.us*