

**Missouri CROP
ROMs**
(Resource Offering/Removal Maps)

September 2008

Prepared by:

Catherine M. Mater
Mater Ltd.
136 SW Washington Ave., Ste. 201
Corvallis, Oregon 97333
Tel: 541-753-7335 Fx: 541-752-2952
mater@mater.com
www.mater.com

**Missouri CROP
ROMs
(Center point: Rolla)**

September 2008

Table of Contents

	<i>Page</i>
Missouri All Agencies	3
All Agencies Location Map	4
NEPA Overviews	5
NEPA All Agencies	6-8
ROMs by Species.....	9
a) <u>Oak Species Overview</u>	10
b) Oak Species Location Map	11
c) Diameter by Year	12
d) Source Specific:	
<i>Mark Twain NF:</i>	13-16
<i>MO Dept. of Conservation:</i>	17-18
<i>Ft. Leonard Wood:</i>	19
a) <u>Oak/Pine Overview</u>	20
b) Oak/Pine Location Map	21
c) Diameter by Year	22
d) Source Specific:	
<i>Mark Twain NF:</i>	23-25
a) <u>Short-leaf Pine Overview</u>	26
b) Short-leaf Pine Location Map	27
c) Diameter by Year	28
d) Source Specific:	
<i>Mark Twain NF:</i>	29-32
a) <u>Eastern Red Cedar Overview</u>	33
b) Eastern Red Cedar Location Map	34
c) Diameter by Year	35
d) Source Specific:	
<i>Mark Twain NF:</i>	36

Abbreviations used in ROMs:

<i>MO</i> = Missouri	<i>gT</i> = green tons
<i>Co.</i> = County	<i>S</i> = small log stratum (>7"-12" dbh)
<i>RD</i> = Ranger District	<i>L</i> = large log stratum (>12" dbh)

Missouri: All Agencies CROP offering/removal '09 - '13
(gT = 955,074 / S = 126.55 mmbf / L = 172.348 mmbf)
(489.913 total mmbf)

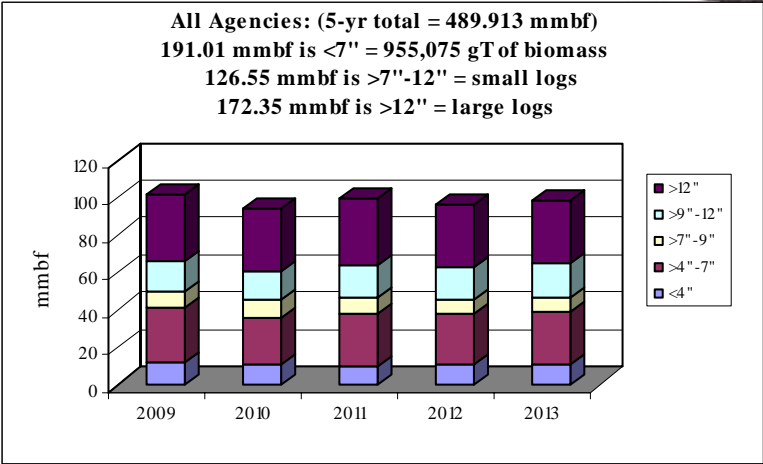
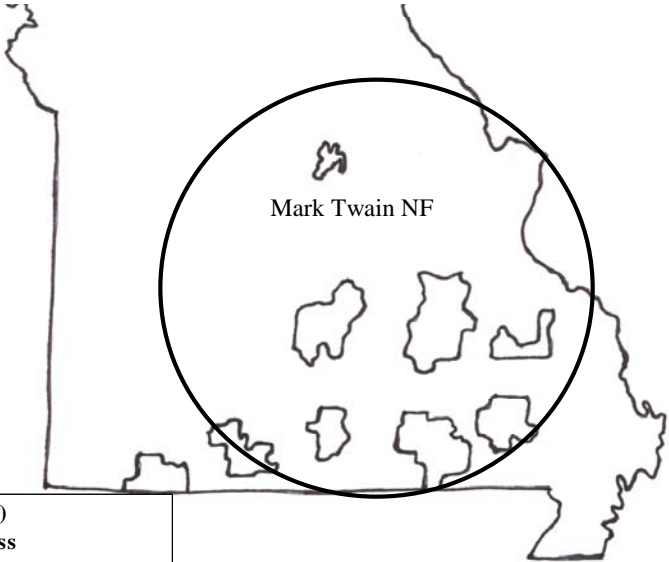
gT = green tons (up to 7" dbh)
 S = small log mmbf (>7"-12" dbh)
 L = large log mmbf (>12" dbh)

Mark Twain NF: 73%
(gT = 727,705 / S = 93.487 / L = 121.2)

Ft. Leonard Wood: 1%
(gT = 11,369 / S = 1.063 / L = 3.148)

***MO Dept. of Conservation: 25%**
(gT = 216,000 / S = 32 / L = 48)
 *some volume not currently accessible by roads

MO Dept. of Transportation:
Not able to calculate volume but will
conduct clearing projects on ~500 acres
over next five years.
(90% acreage to be cleared in '09-'10)



All Agency/Species	gT	mmbf	
	Biomass	Small Log	Large Log
2009	203097.2	25.613	35.273
2010	179504.5	24.427	33.562
2011	189382.9	25.615	35.795
2012	190143.2	24.995	33.671
2013	192946.9	25.9	34.047
Totals	955074.7	126.55	172.348
%	39%	26%	35%
mmbf	191.01494		

489.91294

**Missouri: All Agencies CROP offering/removal '09 – '13
 (gT = 955,075 / S = 126.55 mmbf / L = 172.348 mmbf)
 (489,913 total mmbf)**

gT = green tons (up to 7" dbh)
 S = small log mmbf (>7"-12" dbh)
 L = large log mmbf (>12" dbh)

Mark Twain NF:

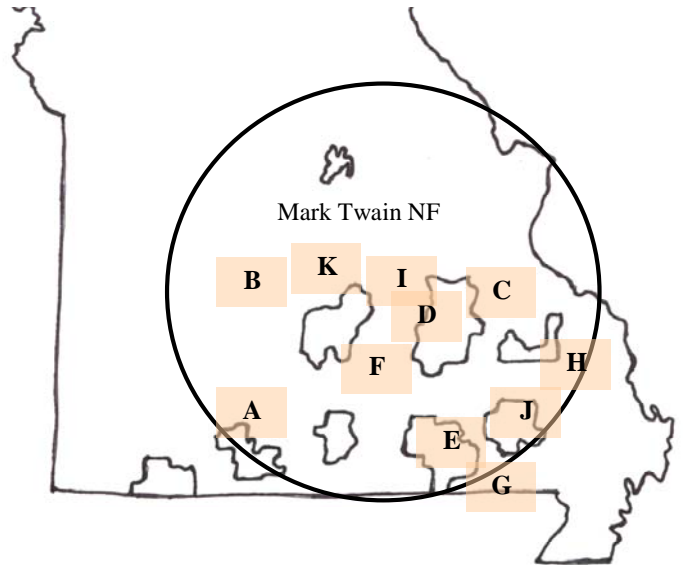
- A Ava/Cassville/Willow Springs RD ($gT = 111,705 / S = 20.387 / L = 21.3$)
- B Houston/Rolla/Cedar Creek RD ($gT = 100,000 / S = 9.5 / L = 20$)
- C Potosi/Fredericktown RD ($gT = 160,000 / S = 15.5 / L = 35$)
- D Salem RD ($gT = 132,500 / S = 7.5 / L = 28.5$)
- E Doniphan/Eleven Pt/Poplar Blf RD ($gT = 223,500 / S = 40.6 / L = 16.4$)

MO Dept. of Conservation:

- F Shannon/Reynolds Co. ($gT = 162,000 / S = 24 / L = 36$)
- G Butler Co. ($gT = 13,500 / S = 2 / L = 3$)
- H Bollinger Co. ($gT = 13,500 / S = 2 / L = 3$)
- I Dent Co. ($gT = 13,500 / S = 2 / L = 3$)
- J Wayne Co. ($gT = 13,500 / S = 2 / L = 3$)

Ft. Leonard Wood:

- K Ft. Leonard Wood ($gT = 11,370 / S = 1.063 / L = 3.148$)

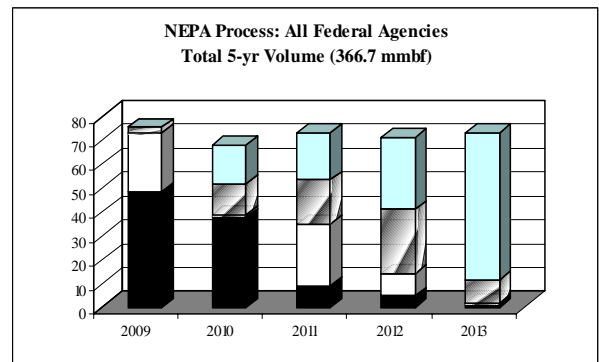
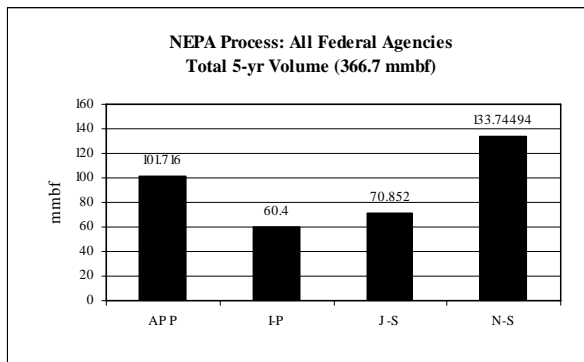


NEPA Overviews

(National Environmental Policy Act)

NEPA Process – All Federal Agencies (Mark Twain NF & Fort Leonard Wood):
 Total 5-yr volume (366.71 mmbf; includes gT as mmbf)

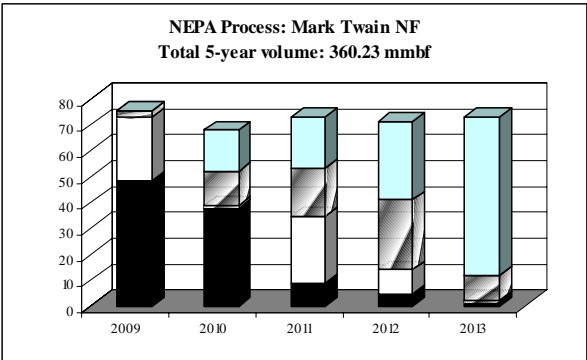
	<i>mmbf</i>	<i>% of total</i>
<i>Approved</i>	101.72	28%
<i>In process</i>	60.4	16%
<i>Just started</i>	70.85	19%
<i>Not started</i>	133.74	36%





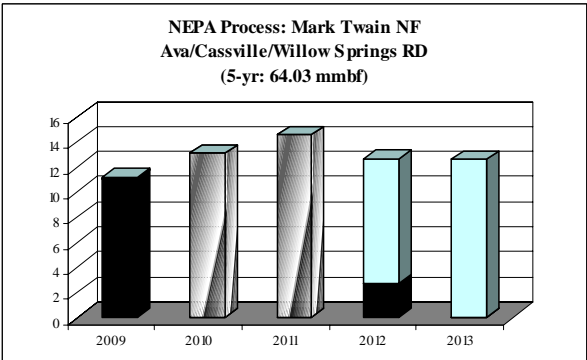
Mark Twain NF: Total 5-yr volume (360.23 mmbf; includes gT as mmbf)

	<i>mmbf</i>	<i>% of total</i>
<i>Approved</i>	101.72	28%
<i>In process</i>	60.4	17%
<i>Just started</i>	70.85	20%
<i>Not started</i>	127.26	35%



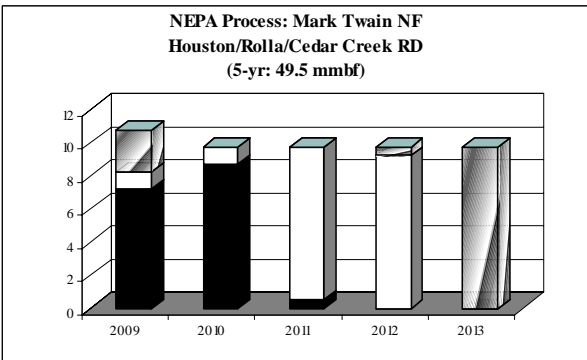
Mark Twain NF: Ava/Cassville/Willow Springs RD (64.03 mmbf; includes gT as mmbf)

	<i>mmbf</i>	<i>% of total</i>
<i>Approved</i>	13.82	22%
<i>In process</i>	0	0%
<i>Just started</i>	27.65	43%
<i>Not started</i>	22.56	35%



Mark Twain NF: Houston/Rolla/Cedar Creek RD (49.5 mmbf; includes gT as mmbf)

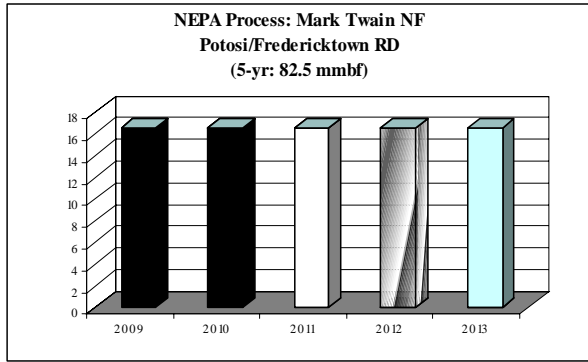
	<i>mmbf</i>	<i>% of total</i>
<i>Approved</i>	16.4	33%
<i>In process</i>	20.4	41%
<i>Just started</i>	12.7	26%
<i>Not started</i>	0	0%





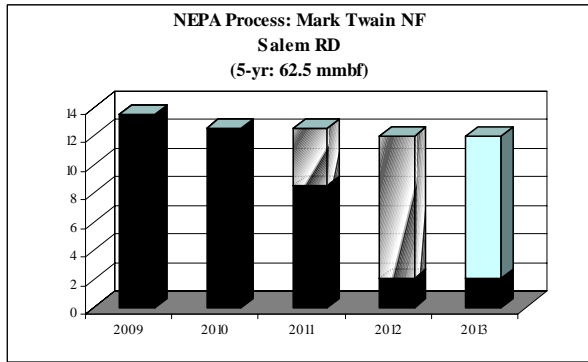
Mark Twain NF: Potosi/Fredericktown RD (82.5 mmbf; includes gT as mmbf)

	<i>mmbf</i>	<i>% of total</i>
<i>Approved</i>	33	40%
<i>In process</i>	16.5	20%
<i>Just started</i>	16.5	20%
<i>Not started</i>	16.5	20%



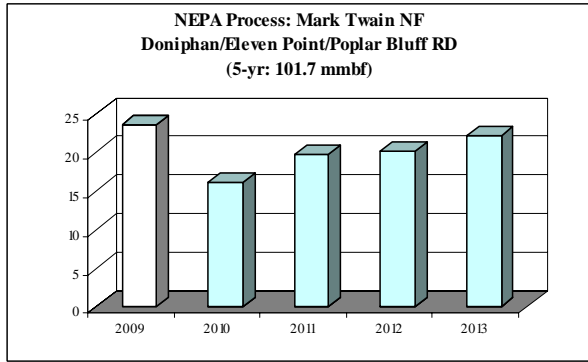
Mark Twain NF: Salem RD (62.5 mmbf; includes gT as mmbf)

	<i>mmbf</i>	<i>% of total</i>
<i>Approved</i>	38.5	62%
<i>In process</i>	0	0%
<i>Just started</i>	14	22%
<i>Not started</i>	10	16%



Mark Twain NF: Doniphan/Eleven Pt/Poplar Blf RD (101.7 mmbf; includes gT as mmbf)

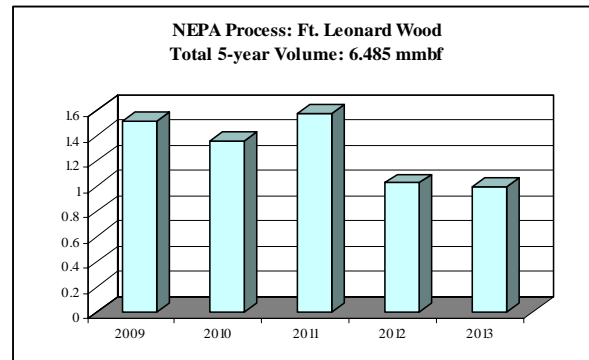
	<i>mmbf</i>	<i>% of total</i>
<i>Approved</i>	0	0%
<i>In process</i>	23.5	23%
<i>Just started</i>	0	0%
<i>Not started</i>	78.2	77%



Ft. Leonard Wood: Total 5-yr volume (6.485 mmbf; includes gT as mmbf)



	<i>mmbf</i>	<i>% of total</i>
<i>Approved</i>	0	0%
<i>In process</i>	0	0%
<i>Just started</i>	0	0%
<i>Not started</i>	6.485	100%



ROMs by Species

(Resource Offering/Removal Maps)

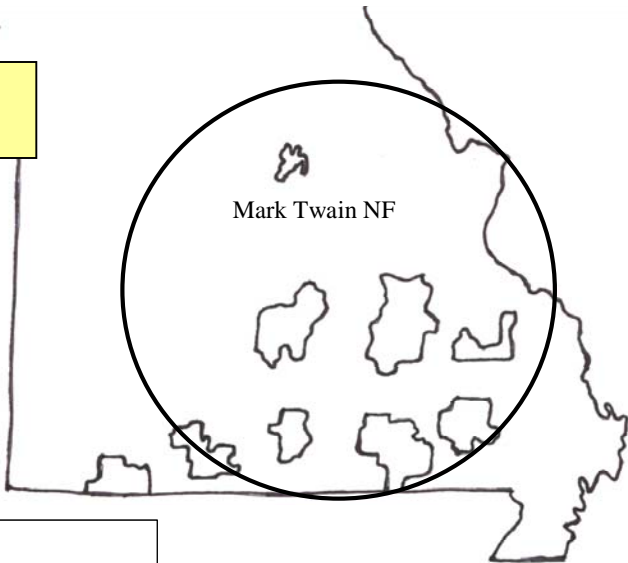
Missouri: Oak species CROP offering/removal '09 – '13
(gT = 597,900 / S = 99.484 mmbf / L = 160.448 mmbf)
(379.512 total mmbf)

ROM # Oak sp. 1

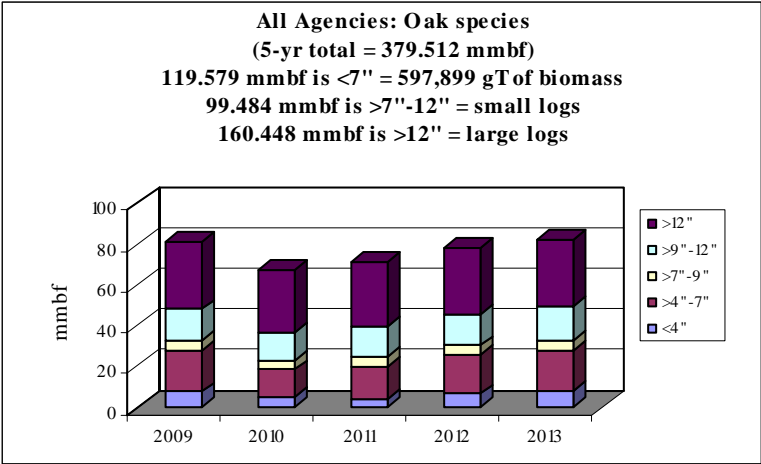
gT = green tons (up to 7" dbh)
 S = small log mmbf (>7"-12" dbh)
 L = large log mmbf (>12" dbh)

Mark Twain NF: 66%
(gT = 370,530 / S = 66.421 / L = 109.3)

***MO Dept. of Conservation: 32%**
(gT = 216,000 / S = 32 / L = 48)
 *some volume not currently accessible by roads



Ft. Leonard Wood: 2%
(gT = 11,369 / S = 1.063 / L = 3.148)



	gT	mmbf	
Oak species	Biomass	Small Log	Large Log
2009	137747.2	20.513	32.873
2010	92089.5	18.044	30.762
2011	100972.9	19.232	32.195
2012	127143.2	20.395	32.071
2013	139946.9	21.3	32.547
Totals	597899.7	99.484	160.448
%	32%	26%	42%
mmbf	119.57994		

379.51194

Missouri: *Oak species* CROP offering/removal '09 – '13
(gT = 597,900 / S = 99,484 mmbf / L = 160,448 mmbf)
(379,512 total mmbf)

ROM # Oak sp. 1.1

Oak sp. = Oak species

Mark Twain NF:

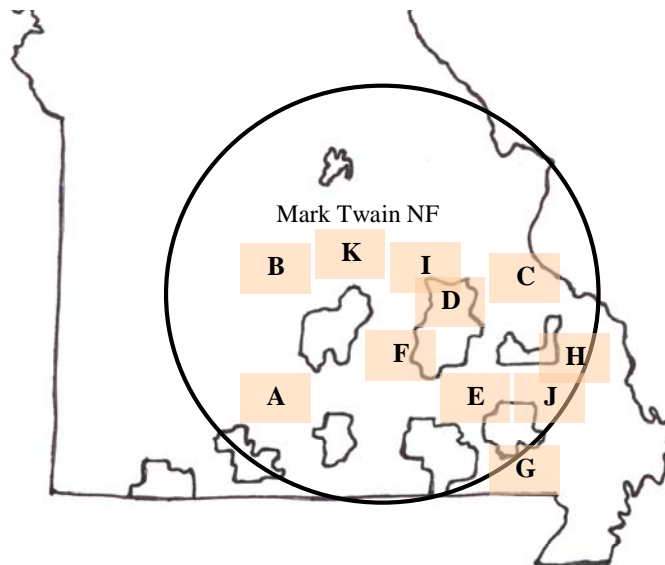
- A** *Ava/Cassville/Willow Springs RD* (gT = 41,530 / S = 14.421 / L = 16)*
- B** *Houston/Rolla/Cedar Creek RD* (gT = 100,000 / S = 2.5 / L = 20)
- C** *Potosi/Fredericktown RD* (gT = 25,000 / S = 10 / L = 35)
- D** *Salem RD* (gT = 30,000 / S = 7.5 / L = 24.5)
- E** *Doniphan/Eleven Pt/Poplar Blf RD* (gT = 174,000 / S = 32 / L = 13.8)

MO Dept. of Conservation:

- F** *Shannon/Reynolds Co.* (gT = 162,000 / S = 24 / L = 36)
- G** *Butler Co.* (gT = 13,500 / S = 2 / L = 3)
- H** *Bollinger Co.* (gT = 13,500 / S = 2 / L = 3)
- I** *Dent Co.* (gT = 13,500 / S = 2 / L = 3)
- J** *Wayne Co.* (gT = 13,500 / S = 2 / L = 3)

Ft. Leonard Wood:

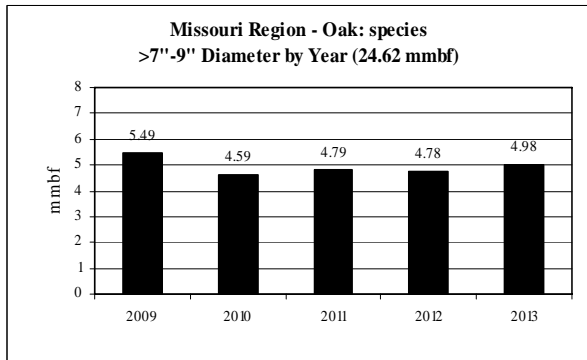
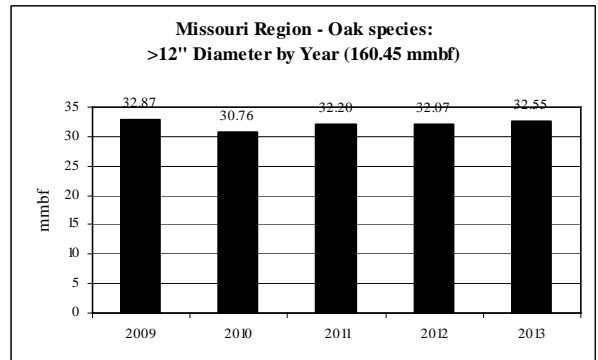
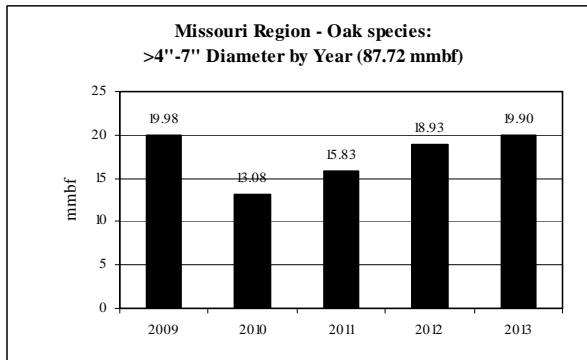
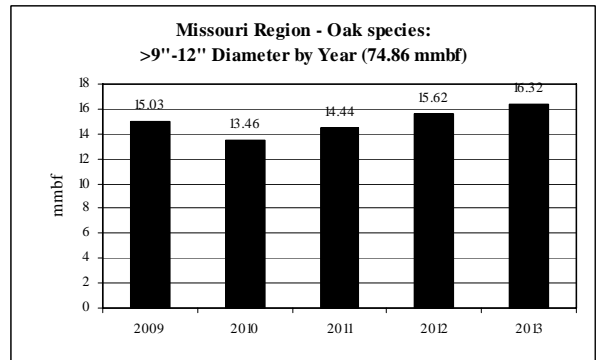
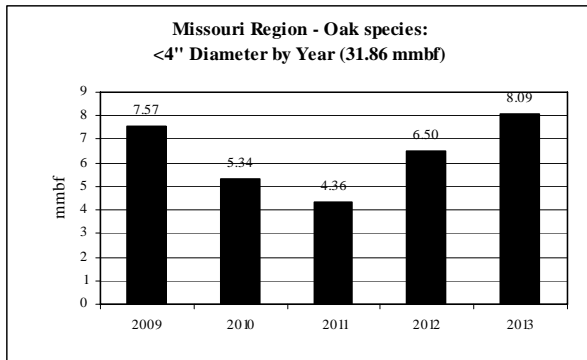
- K** *Ft. Leonard Wood* (gT = 11,370 / S = 1.063 / L = 3.148)



**italics/bold = species offering in CROP*

Oak species: Diameter by Year

ROM # Oak sp. 1.2



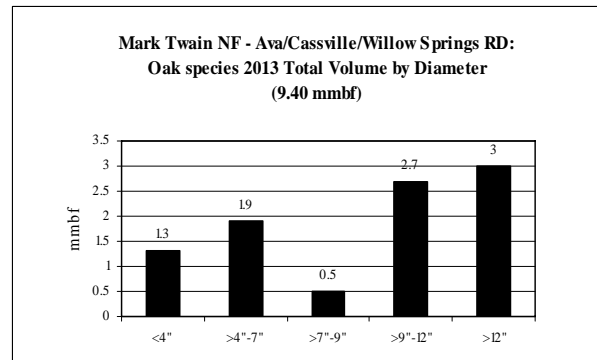
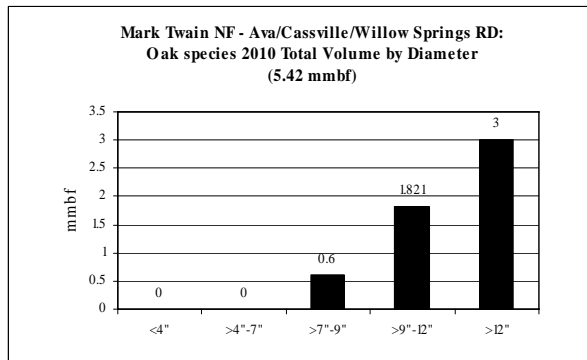
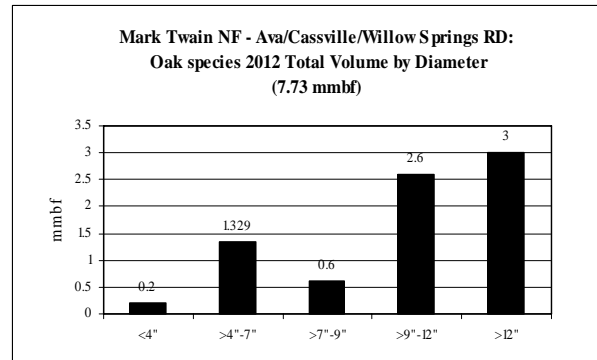
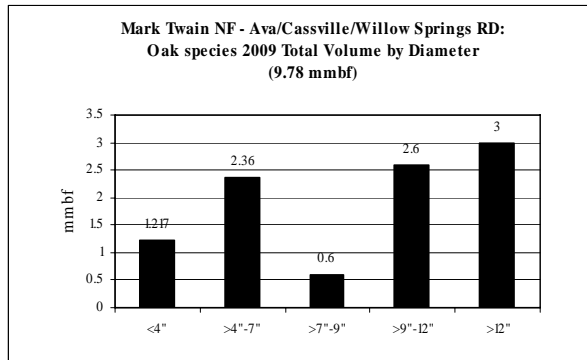
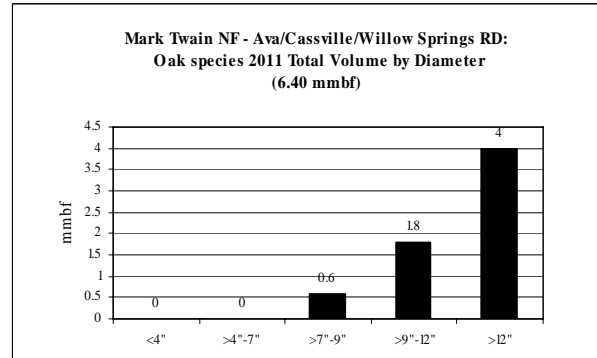
**Missouri: Oak species CROP offering/removal '09 – '13
(by agency)**

ROM # Oak sp. 1.3

gT = green tons (up to 7" dbh)
S = small log mmbf (>7"-12" dbh)
L = large log mmbf (>12" dbh)

A

Oak species Mark Twain NF: Ava/Cassville/Willow Springs RD	5-yr = 38.727 mmbf
	<ul style="list-style-type: none"> • Unlevel supply from year to year
gT = 41,530	<ul style="list-style-type: none"> • <4" = 7% (2.717 mmbf) • >4"-7" = 14% (5.589 mmbf)
S = 14.421	<ul style="list-style-type: none"> • >7"-9" = 7% (2.9 mmbf) • >9"-12" = 30% (11.521 mmbf)
L = 16	<ul style="list-style-type: none"> • >12" = 41% (16 mmbf)



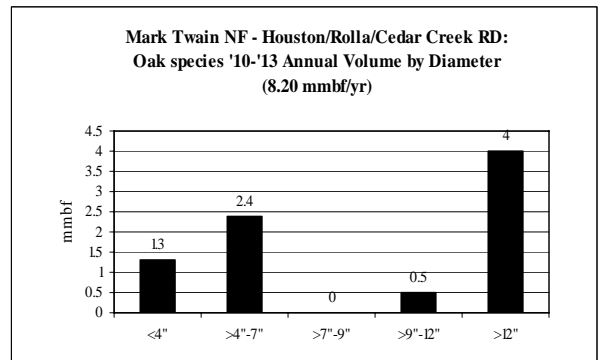
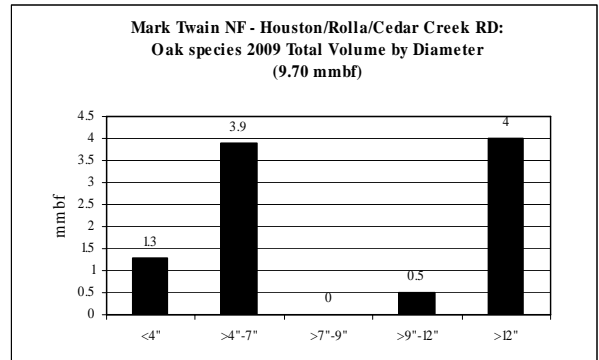
**Missouri: Oak species CROP offering/removal '09 – '13
(by agency)**

ROM # Oak sp. 1.4

gT = green tons (up to 7" dbh)
S = small log mmbf (>7"-12" dbh)
L = large log mmbf (>12" dbh)

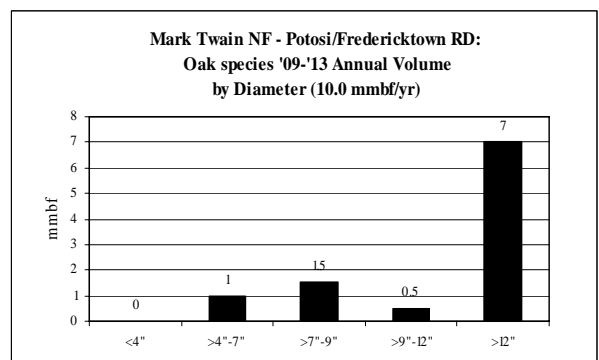
B

Oak species Mark Twain NF: Houston/Rolla/Cedar Creek RD	5-yr = 42.5 mmbf
	<ul style="list-style-type: none"> Fairly level supply from year to year
gT = 100,000	<ul style="list-style-type: none"> <4" = 15% (6.5 mmbf) >4"-7" = 32% (13.5 mmbf)
S = 2.5	<ul style="list-style-type: none"> >7"-9" = 0% (0 mmbf) >9"-12" = 6% (2.5 mmbf)
L = 20	<ul style="list-style-type: none"> >12" = 47% (20 mmbf)



C

Oak species Mark Twain NF: Potosi/Fredericktown RD	5-yr = 50 mmbf; 10 mmbf/yr
	<ul style="list-style-type: none"> Level supply from year to year
gT = 25,000	<ul style="list-style-type: none"> <4" = 0% (0 mmbf) >4"-7" = 10% (5 mmbf)
S = 10	<ul style="list-style-type: none"> >7"-9" = 15% (7.5 mmbf) >9"-12" = 5% (2.5 mmbf)
L = 35	<ul style="list-style-type: none"> >12" = 70% (35 mmbf)



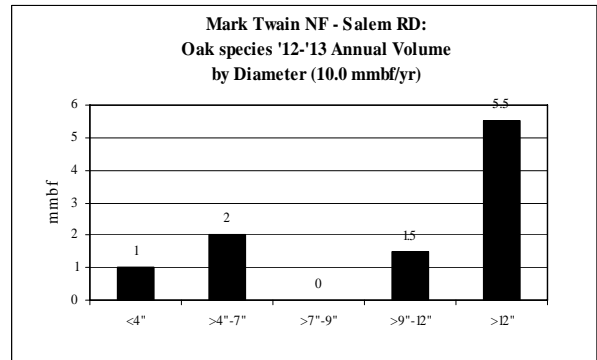
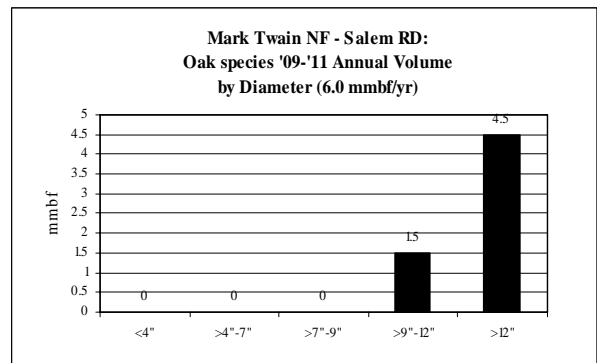
**Missouri: Oak species CROP offering/removal '09 – '13
(by agency)**

ROM # Oak sp. 1.5

gT = green tons (up to 7" dbh)
S = small log mmbf (>7"-12" dbh)
L = large log mmbf (>12" dbh)

D

Oak species Mark Twain NF: Salem RD	5-yr = 38 mmbf
	<ul style="list-style-type: none"> • Level supply '09-'11; then level for '12-'13
gT = 30,000	<ul style="list-style-type: none"> • <4" = 5% (2 mmbf) • >4"-7" = 11% (4 mmbf)
S = 7.5	<ul style="list-style-type: none"> • >7"-9" = 0% (0 mmbf) • >9"-12" = 20% (7.5 mmbf)
L = 24.5	<ul style="list-style-type: none"> • >12" = 64% (24.5 mmbf)



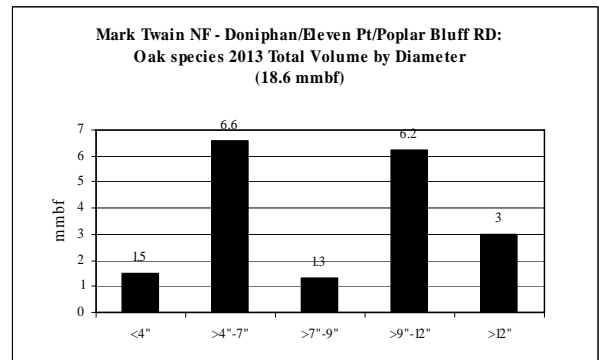
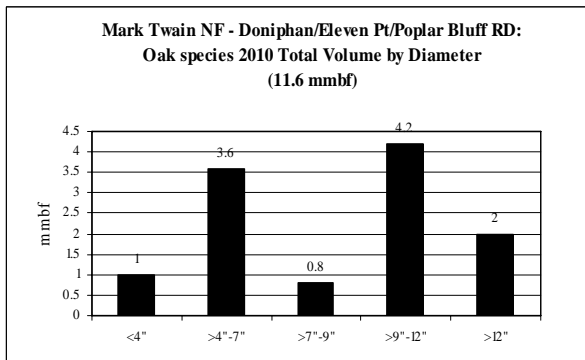
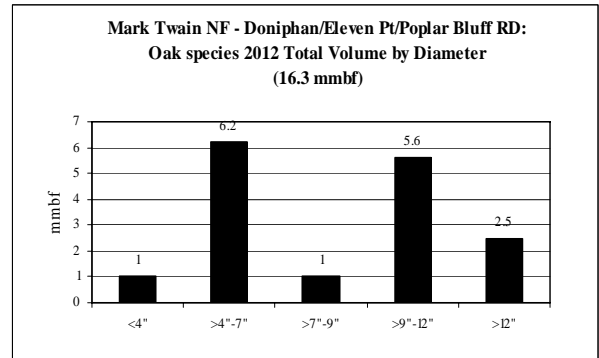
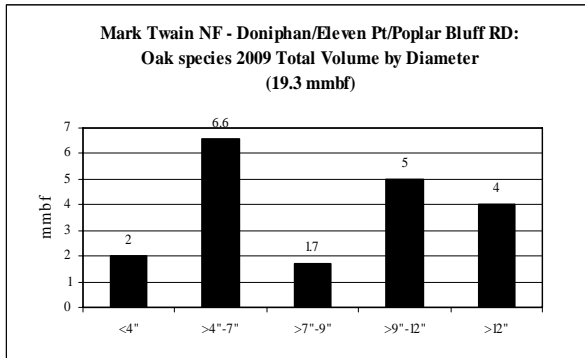
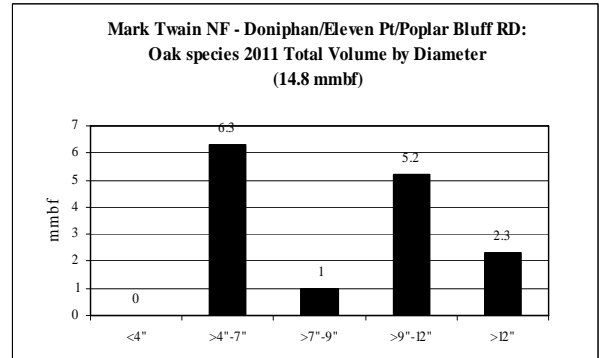
Missouri: Oak species CROP offering/removal '09 – '13
(by agency)

ROM # Oak sp. 1.6

gT = green tons (up to 7" dbh)
S = small log mmbf (>7"-12" dbh)
L = large log mmbf (>12" dbh)

E

Oak species Mark Twain NF: Doniphan/Eleven Pt/Poplar Blf RD	5-yr = 80.6 mmbf
	<ul style="list-style-type: none"> • Unlevel supply from year to year
gT = 174,000	<ul style="list-style-type: none"> • <4" = 7% (5.5 mmbf) • >4"-7" = 36% (29.3 mmbf)
S = 32	<ul style="list-style-type: none"> • >7"-9" = 7% (5.8 mmbf) • >9"-12" = 33% (26.2 mmbf)
L = 13.8	<ul style="list-style-type: none"> • >12" = 17% (13.8 mmbf)



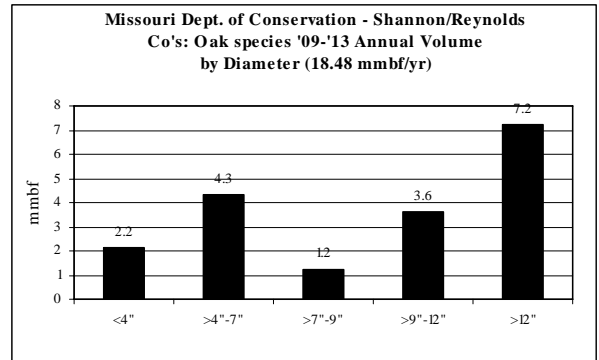
**Missouri: Oak species CROP offering/removal '09 – '13
(by agency)**

ROM # Oak sp. 1.7

gT = green tons (up to 7" dbh)
S = small log mmbf (>7"-12" dbh)
L = large log mmbf (>12" dbh)

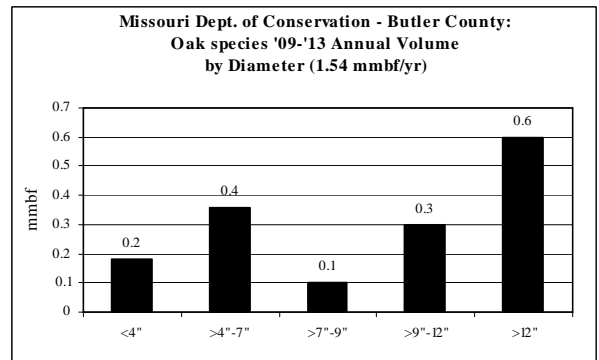
F

Oak species MO Dept. of Conservation: Shannon/Reynolds Co.'s	5-yr = 92.4 mmbf; 18.48 mmbf/yr
	<ul style="list-style-type: none"> • Level supply from year to year
gT = 162,000	<ul style="list-style-type: none"> • <4" = 12% (10.79 mmbf) • >4"-7" = 23% (21.61 mmbf)
S = 24	<ul style="list-style-type: none"> • >7"-9" = 6% (6 mmbf) • >9"-12" = 19% (18 mmbf)
L = 36	<ul style="list-style-type: none"> • >12" = 39% (36 mmbf)



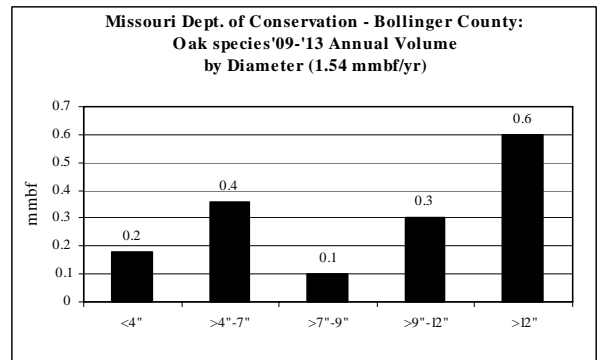
G

Oak species MO Dept. of Conservation: Butler Co.	5-yr = 7.7 mmbf; 1.54 mmbf/yr
	<ul style="list-style-type: none"> • Level supply from year to year
gT = 13,500	<ul style="list-style-type: none"> • <4" = 12% (.899 mmbf) • >4"-7" = 23% (1.801 mmbf)
S = 2	<ul style="list-style-type: none"> • >7"-9" = 6% (.5 mmbf) • >9"-12" = 19% (1.5 mmbf)
L = 3	<ul style="list-style-type: none"> • >12" = 39% (3 mmbf)



H

Oak species MO Dept. of Conservation: Bollinger Co.	5-yr = 7.7 mmbf; 1.54 mmbf/yr
	<ul style="list-style-type: none"> • Level supply from year to year
gT = 13,500	<ul style="list-style-type: none"> • <4" = 12% (.899 mmbf) • >4"-7" = 23% (1.801 mmbf)
S = 2	<ul style="list-style-type: none"> • >7"-9" = 6% (.5 mmbf) • >9"-12" = 19% (1.5 mmbf)
L = 3	<ul style="list-style-type: none"> • >12" = 39% (3 mmbf)



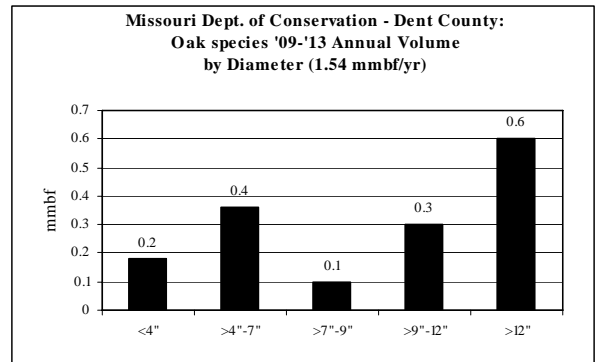
**Missouri: Oak species CROP offering/removal '09 – '13
(by agency)**

ROM # Oak sp. 1.8

gT = green tons (up to 7" dbh)
S = small log mmbf (>7"-12" dbh)
L = large log mmbf (>12" dbh)

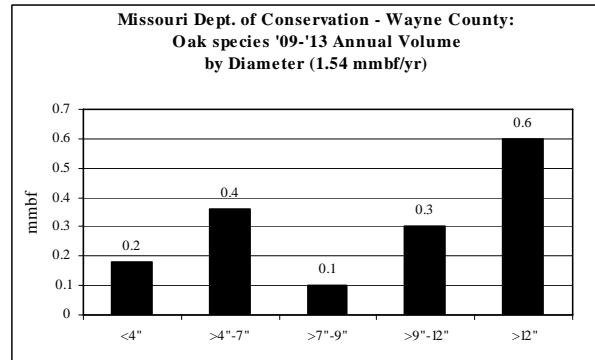
I

Oak species MO Dept. of Conservation: Dent Co.	5-yr = 7.7 mmbf; 1.54 mmbf/yr
	<ul style="list-style-type: none"> • Level supply from year to year
gT = 13,500	<ul style="list-style-type: none"> • <4" = 12% (.899 mmbf) • >4"-7" = 23% (1.801 mmbf)
S = 2	<ul style="list-style-type: none"> • >7"-9" = 6% (.5 mmbf) • >9"-12" = 19% (1.5 mmbf)
L = 3	<ul style="list-style-type: none"> • >12" = 39% (3 mmbf)



J

Oak species MO Dept. of Conservation: Wayne Co.	5-yr = 7.7 mmbf; 1.54 mmbf/yr
	<ul style="list-style-type: none"> • Level supply from year to year
gT = 13,500	<ul style="list-style-type: none"> • <4" = 12% (.899 mmbf) • >4"-7" = 23% (1.801 mmbf)
S = 2	<ul style="list-style-type: none"> • >7"-9" = 6% (.5 mmbf) • >9"-12" = 19% (1.5 mmbf)
L = 3	<ul style="list-style-type: none"> • >12" = 39% (3 mmbf)



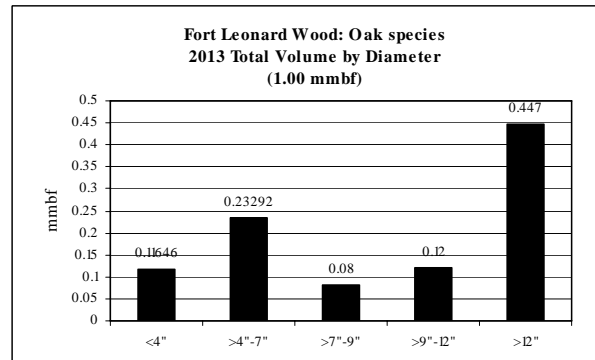
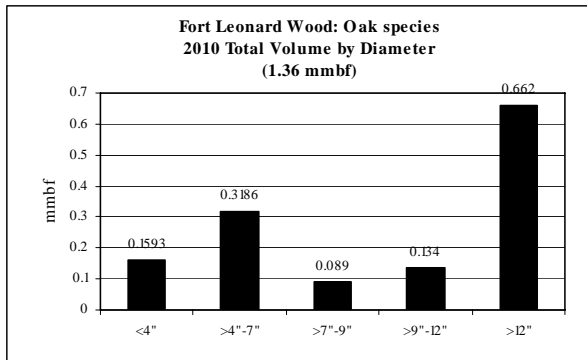
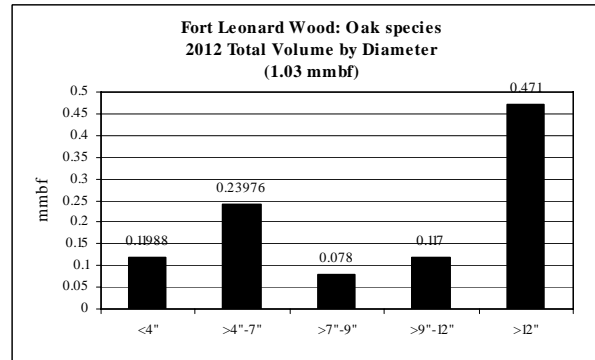
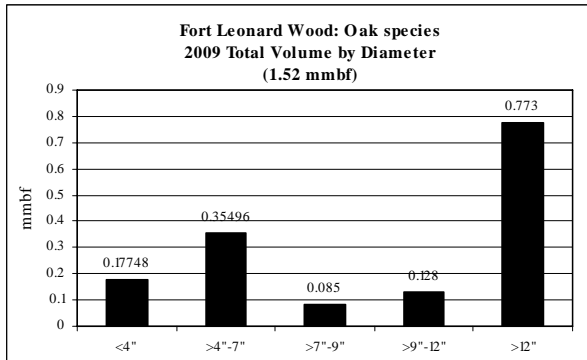
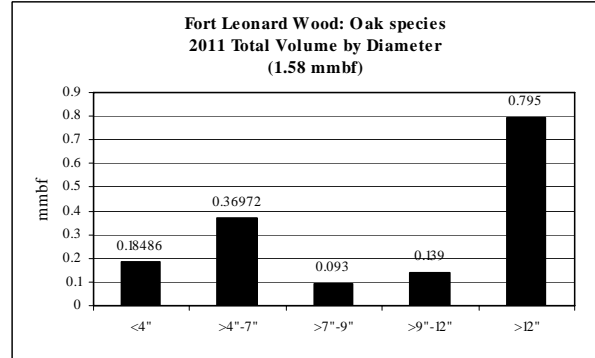
**Missouri: Oak species CROP offering/removal '09 – '13
(by agency)**

ROM # Oak sp. 1.9

gT = green tons (up to 7" dbh)
S = small log mmbf (>7"-12" dbh)
L = large log mmbf (>12" dbh)

K

Oak species Ft. Leonard Wood	5-yr = 6.485 mmbf
	<ul style="list-style-type: none"> Fairly level supply from year to year
gT = 11,369	<ul style="list-style-type: none"> <4" = 12% (.758 mmbf) >4"-7" = 23% (1.516 mmbf)
S = 1.063	<ul style="list-style-type: none"> >7"-9" = 7% (.425 mmbf) >9"-12" = 10% (.638 mmbf)
L = 3.148	<ul style="list-style-type: none"> >12" = 49% (3.148 mmbf)

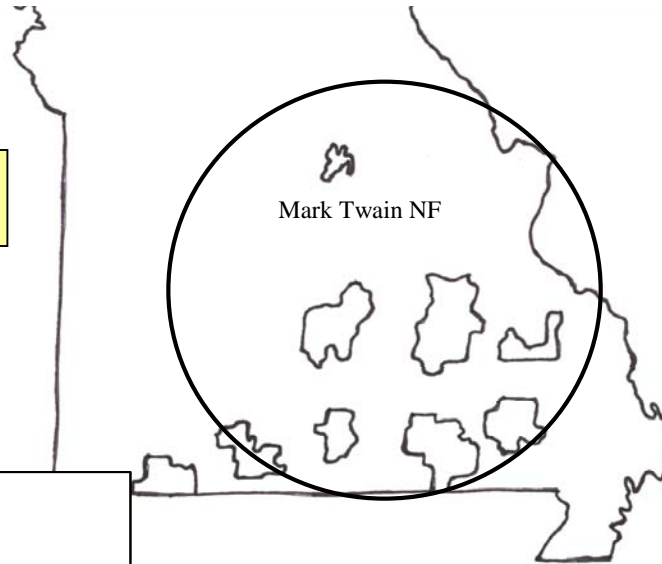


Missouri: Oak/pine CROP offering/removal '09 – '13
(gT = 312,500 / S = 1.9 mmbf / L = 0 mmbf)
(64.4 total mmbf)

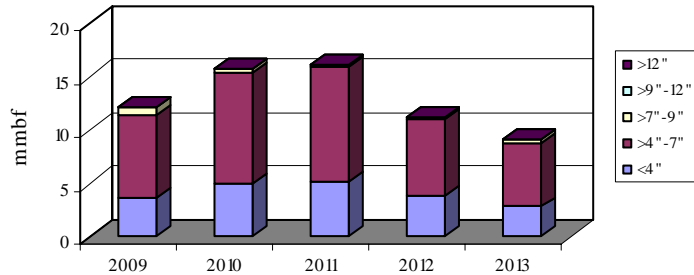
ROM # Oak/pine 1

gT = green tons (up to 7" dbh)
 S = small log mmbf (>7"-12" dbh)
 L = large log mmbf (>12" dbh)

Mark Twain NF: 100%
(gT = 312,500 / S = 1.9 / L = 0)



All Agencies: Oak/pine
(5-yr total = 64.4 mmbf)
42 mmbf is <7" = 312,500 gT of biomass
1.9 mmbf is >7"-12" = small logs
0 mmbf is >12" = large logs



Oak/pine	gT	mmbf	
	Biomass	Small Log	Large Log
2009	57000	0.7	0
2010	77000	0.3	0
2011	79500	0.3	0
2012	55000	0.3	0
2013	44000	0.3	0
Totals	312500	1.9	0
%	97%	3%	0%
mmbf	62.5		

64.4

Missouri: *Oak/pine* CROP offering/removal '09 – '13
(gT = 312,500 / S = 1.9 mmbf / L = 0 mmbf)
(64.4 total mmbf)

ROM # Oak/pine 1.1

gT = green tons (up to 7" dbh)
 S = small log mmbf (>7"-12" dbh)
 L = large log mmbf (>12" dbh)

Oak/pine = Oak/pine

Mark Twain NF:

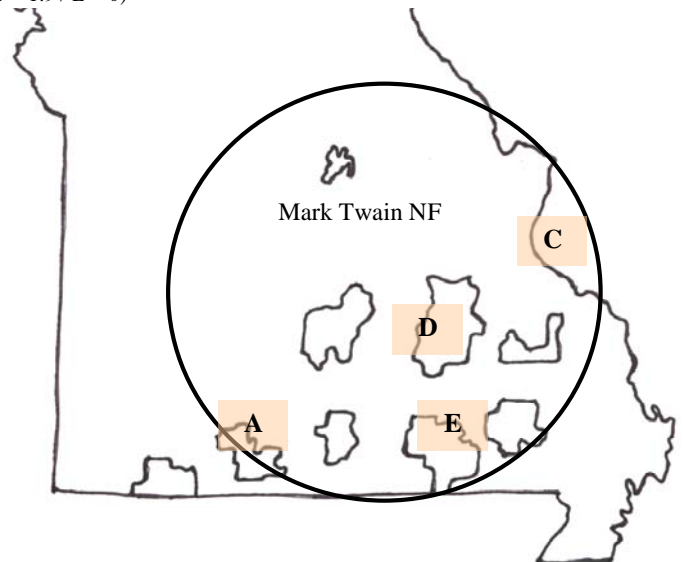
- A** *Ava/Cassville/Willow Springs RD* (gT = 64,500 / S = 0 / L = 0)*
- B** Houston/Rolla/Cedar Creek RD
- C** *Potosi/Fredericktown RD* (gT = 127,500 / S = 0 / L = 0)
- D** *Salem RD* (gT = 77,500 / S = 0 / L = 0)
- E** *Doniphan/Eleven Pt/Poplar Blf RD* (gT = 43,000 / S = 1.9 / L = 0)

MO Dept. of Conservation:

- F** Shannon/Reynolds Co.
- G** Butler Co.
- H** Bollinger Co.
- I** Dent Co.
- J** Wayne Co.

Ft. Leonard Wood:

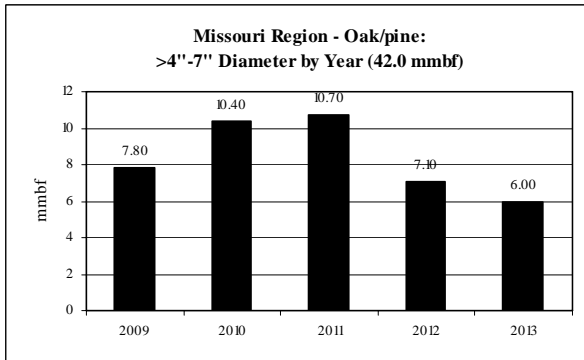
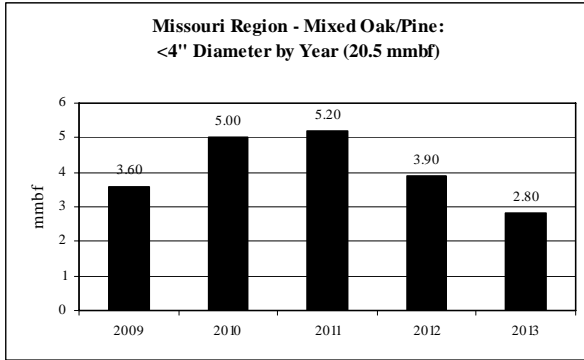
- K** Ft. Leonard Wood



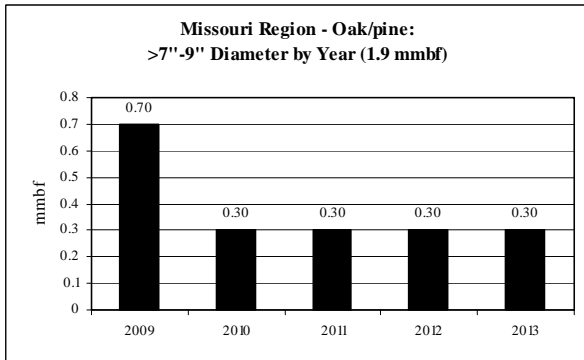
**italics/bold = species offering in CROP*

Oak/pine: Diameter by Year

ROM # Oak/pine 1.2



Note: No volume for >9"-12", >12" dbh



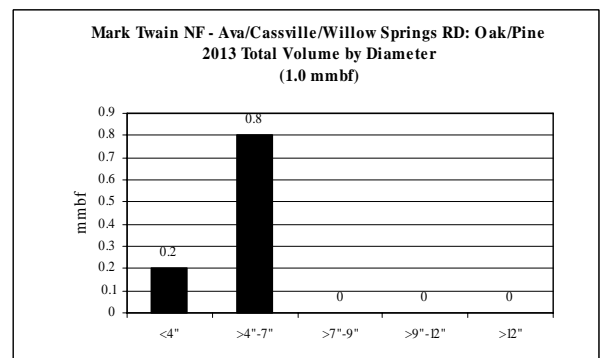
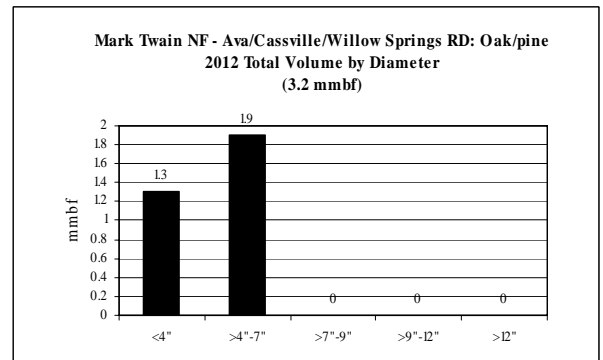
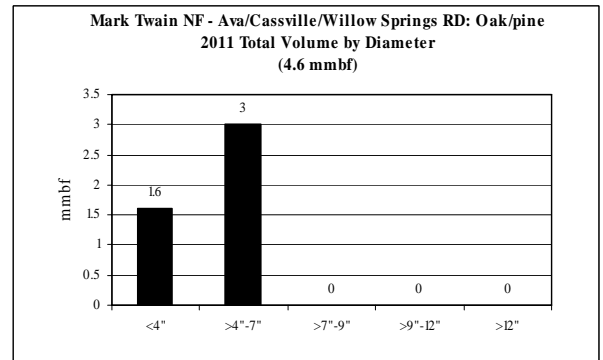
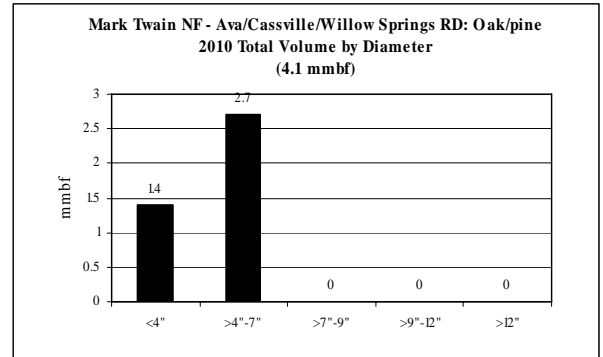
Missouri: Oak/pine CROP offering/removal '09 – '13
(by agency)

ROM # Oak/pine 1.3

gT = green tons (up to 7" dbh)
S = small log mmbf (>7"-12" dbh)
L = large log mmbf (>12" dbh)

A

Oak/pine Mark Twain NF: Ava/Cassville/Willow Springs RD	5-yr = 12.9 mmbf
	<ul style="list-style-type: none"> • No offering in '09; unlevel supply from year to year
gT = 64,500	<ul style="list-style-type: none"> • <4" = 35% (4.5 mmbf) • >4"-7" = 65% (8.4 mmbf)
S = 0	<ul style="list-style-type: none"> • >7"-9" = 0% (0 mmbf) • >9"-12" = 0% (0 mmbf)
L = 0	<ul style="list-style-type: none"> • >12" = 0% (0 mmbf)



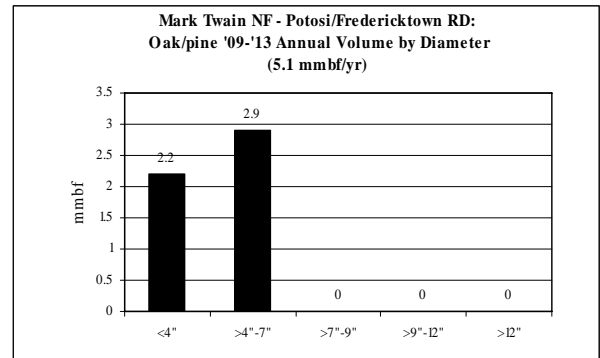
Missouri: Oak/pine CROP offering/removal '09 – '13
(by agency)

ROM # Oak/pine 1.4

gT = green tons (up to 7" dbh)
S = small log mmbf (>7"-12" dbh)
L = large log mmbf (>12" dbh)

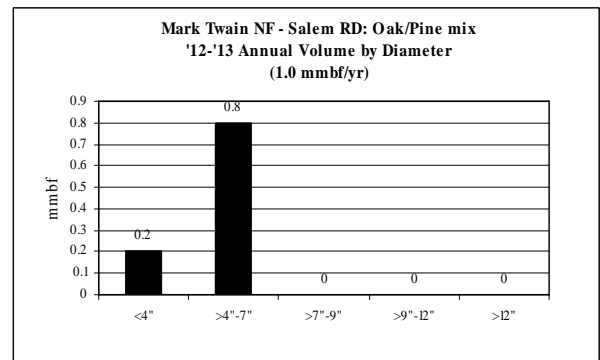
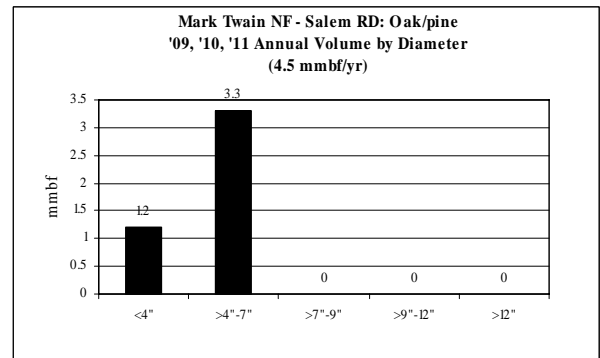
C

Oak/pine Mark Twain NF: Potosi/Fredericktown RD	5-yr = 25.5 mmbf; 5.1 mmbf/yr
	<ul style="list-style-type: none"> • Level supply from year to year
gT = 127,500	<ul style="list-style-type: none"> • <4" = 43% (11 mmbf) • >4"-7" = 57% (14.5 mmbf)
S = 0	<ul style="list-style-type: none"> • >7"-9" = 0% (0 mmbf) • >9"-12" = 0% (0 mmbf)
L = 0	<ul style="list-style-type: none"> • >12" = 0% (0 mmbf)



D

Oak/pine Mark Twain NF: Salem RD	5-yr = 15.5 mmbf
	<ul style="list-style-type: none"> • Unlevel supply from year to year
gT = 77,500	<ul style="list-style-type: none"> • <4" = 26% (4 mmbf) • >4"-7" = 74% (11.5 mmbf)
S = 0	<ul style="list-style-type: none"> • >7"-9" = 0% (0 mmbf) • >9"-12" = 0% (0 mmbf)
L = 0	<ul style="list-style-type: none"> • >12" = 0% (0 mmbf)



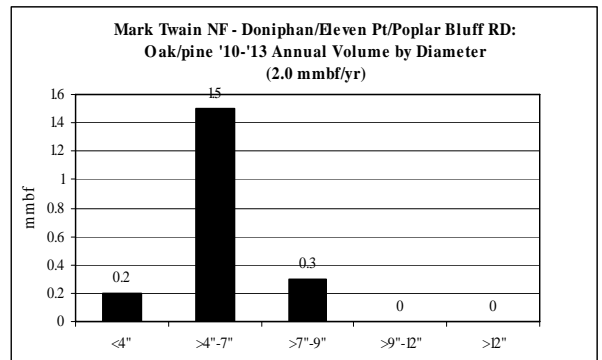
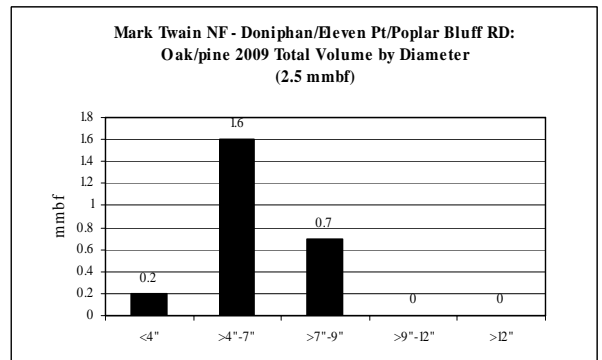
**Missouri: Oak/pine CROP offering/removal '09 – '13
(by agency)**

ROM # Oak/pine 1.5

gT = green tons (up to 7" dbh)
S = small log mmbf (>7"-12" dbh)
L = large log mmbf (>12" dbh)

E

Oak/pine Mark Twain NF: Doniphan/Eleven Pt/Poplar Blf RD	5-yr = 10.5 mmbf
	<ul style="list-style-type: none"> Fairly level supply from year to year
gT = 43,000	<ul style="list-style-type: none"> <4" = 10% (1 mmbf) >4"-7" = 72% (7.6 mmbf)
S = 1.9	<ul style="list-style-type: none"> >7"-9" = 18% (1.9 mmbf) >9"-12" = 0% (0 mmbf)
L = 0	<ul style="list-style-type: none"> >12" = 0% (0 mmbf)

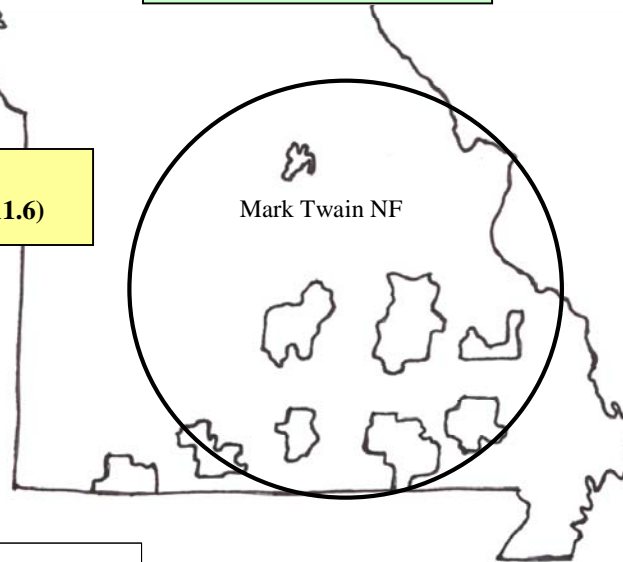


Missouri: Short-leaf Pine CROP offering/removal '06 – '10
(gT = 41,325 / S = 19,766 mmbf / L = 11.6 mmbf)
(39.631 total mmbf)

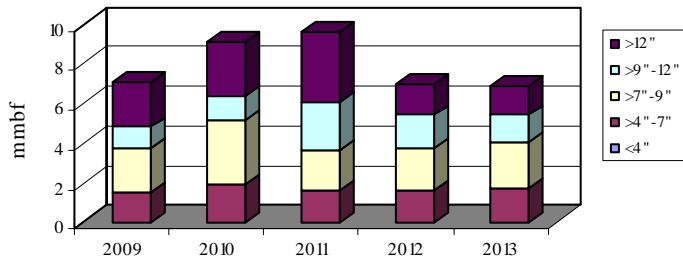
ROM # SLf P 1

gT = green tons (up to 7" dbh)
 S = small log mmbf (>7"-12" dbh)
 L = large log mmbf (>12" dbh)

Mark Twain NF: 100%
(gT = 41,325 / S = 19,766 / L = 11.6)



All Agencies: Short-leaf Pine
(5-yr total = 39.631 mmbf)
8.265 mmbf is <7" = 41,325 gT of biomass
19.766 mmbf is >7"-12" = small logs
11.6 mmbf is >12" = large logs



Short-leaf Pine	gT	mmbf	
	Biomass	Small Log	Large Log
2009	7500	3.3	2.3
2010	9415	4.483	2.7
2011	7910	4.483	3.5
2012	8000	3.8	1.6
2013	8500	3.7	1.5
Totals	41325	19.766	11.6
%	21%	50%	29%
mmbf	8.265		

39.631

Missouri: *Short-leaf Pine* CROP offering/removal '09 – '13
(gT = 41,325 / S = 19.766 mmbf / L = 11.6 mmbf)
(39.631 total mmbf)

ROM # SLf P 1.1

SLf P = short-leaf pine

gT = green tons (up to 7" dbh)
 S = small log mmbf (>7"-12" dbh)
 L = large log mmbf (>12" dbh)

Mark Twain NF:

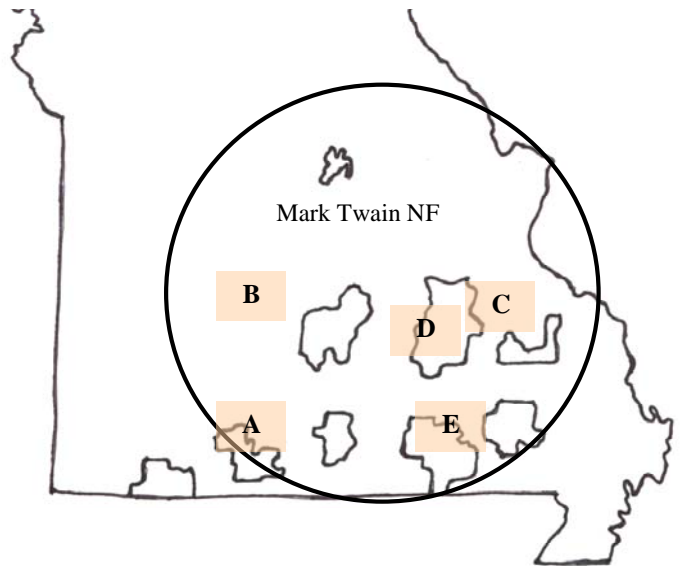
- A** *Ava/Cassville/Willow Springs RD* (gT = 2,325 / S = 2.566 / L = 5)*
- B** *Houston/Rolla/Cedar Creek RD* (gT = 0 / S = 5 / L = 0)
- C** *Potosi/Fredericktown RD* (gT = 7,500 / S = 5.5 / L = 0)
- D** *Salem RD* (gT = 25,000 / S = 0 / L = 4)
- E** *Doniphan/Eleven Pt/Poplar Blf RD* (gT = 6,500 / S = 6.7 / L = 2.6)

MO Dept. of Conservation:

- F** Shannon/Reynolds Co.
- G** Butler Co.
- H** Bollinger Co.
- I** Dent Co.
- J** Wayne Co.

Ft. Leonard Wood:

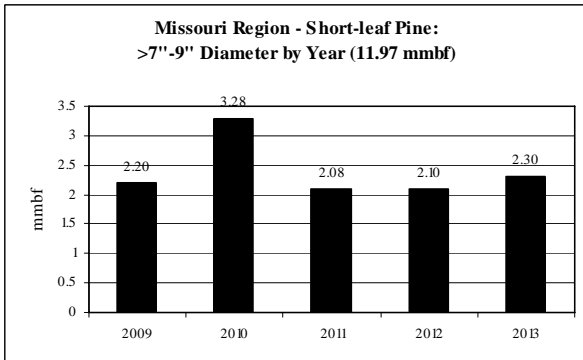
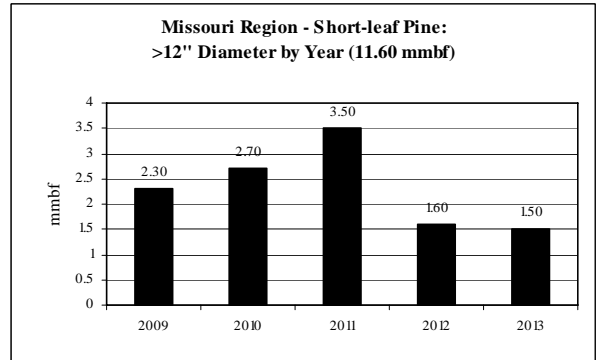
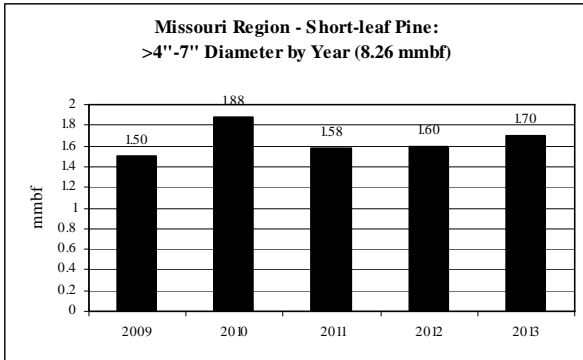
- K** Ft. Leonard Wood



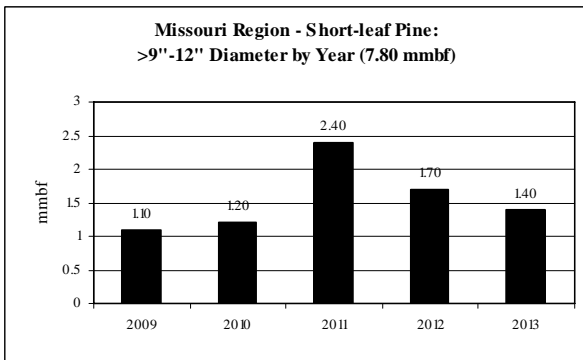
**italics/bold = species offering in CROP*

Short-leaf Pine: Diameter by Year

ROM # SLf P 1.2



Note: No volume for <4" dbh



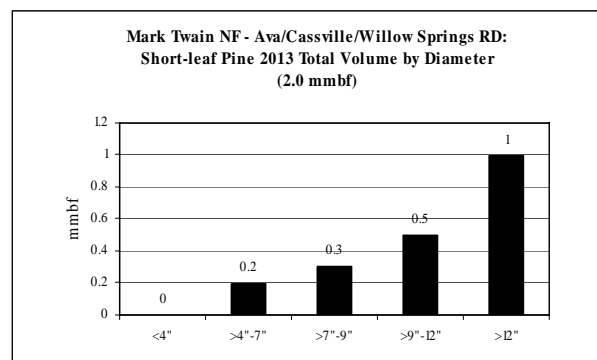
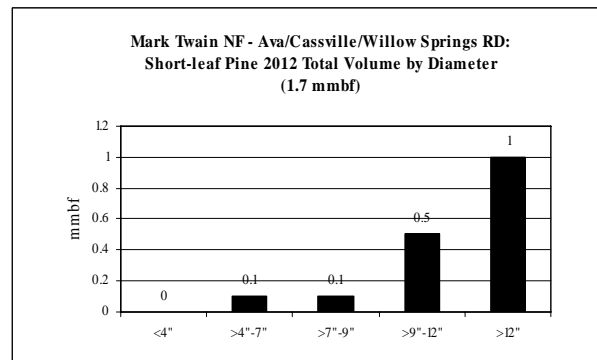
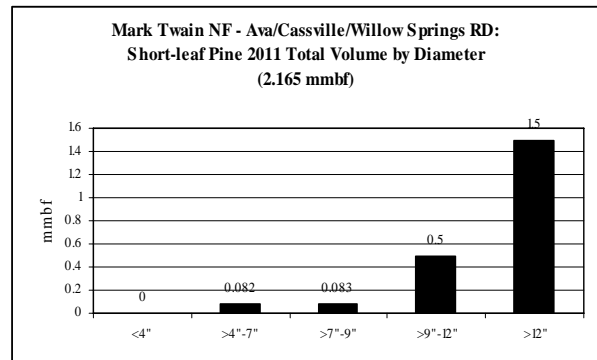
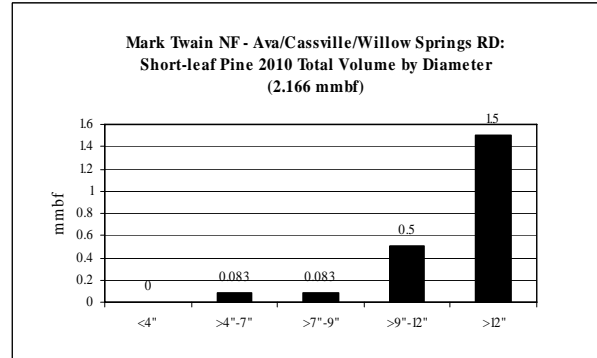
**Missouri: Short-leaf Pine CROP offering/removal '09 – '13
(by agency)**

ROM # SLf P 1.3

gT = green tons (up to 7" dbh)
S = small log mmbf (>7"-12" dbh)
L = large log mmbf (>12" dbh)

A

Short-leaf Pine Mark Twain NF: Ava/Cassville/Willow Springs RD	5-yr = 8.031 mmbf
	<ul style="list-style-type: none"> • No offering in '09; unlevel supply from year to year
gT = 2,325	<ul style="list-style-type: none"> • <4" = 0% (0 mmbf) • >4"-7" = 6% (.465 mmbf)
S = 2.566	<ul style="list-style-type: none"> • >7"-9" = 7% (.566 mmbf) • >9"-12" = 25% (2 mmbf)
L = 5	<ul style="list-style-type: none"> • >12" = 62% (5 mmbf)



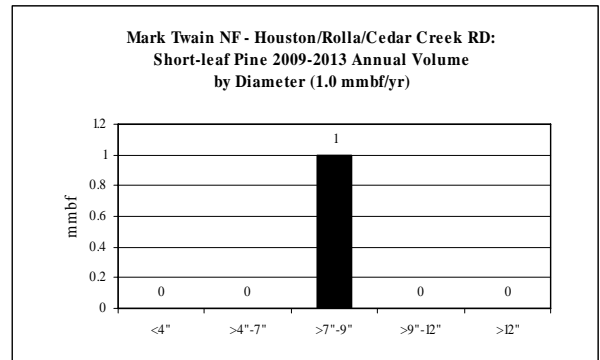
**Missouri: Short-leaf Pine CROP offering/removal '09 – '13
(by agency)**

ROM # SLf P 1.4

gT = green tons (up to 7" dbh)
S = small log mmbf (>7"-12" dbh)
L = large log mmbf (>12" dbh)

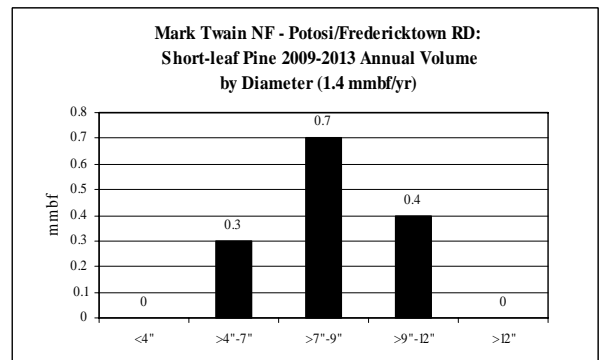
B

Short-leaf Pine Mark Twain NF: Houston/Rolla/Cedar Creek RD	5-yr = 5 mmbf; 1 mmbf/yr
	<ul style="list-style-type: none"> • Level supply from year to year
gT = 0	<ul style="list-style-type: none"> • <4" = 0% (0 mmbf) • >4"-7" = 0% (0 mmbf)
S = 5	<ul style="list-style-type: none"> • >7"-9" = 100% (5 mmbf) • >9"-12" = 0% (0 mmbf)
L = 0	<ul style="list-style-type: none"> • >12" = 0% (0 mmbf)



C

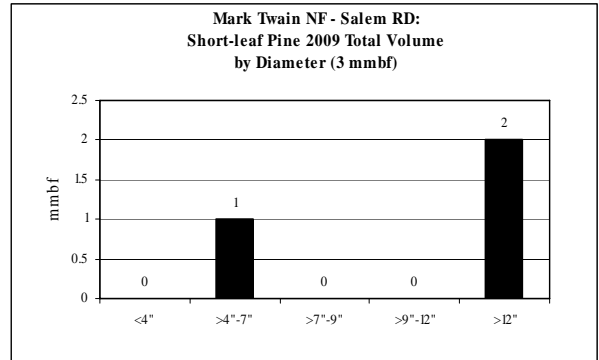
Short-leaf Pine Mark Twain NF: Potosi/Fredericktown RD	5-yr = 7 mmbf; 1.4 mmbf/yr
	<ul style="list-style-type: none"> • Level supply from year to year
gT = 7,500	<ul style="list-style-type: none"> • <4" = 0% (0 mmbf) • >4"-7" = 21% (1.5 mmbf)
S = 5.5	<ul style="list-style-type: none"> • >7"-9" = 50% (3.5 mmbf) • >9"-12" = 29% (2 mmbf)
L = 0	<ul style="list-style-type: none"> • >12" = 0% (0 mmbf)



**Missouri: Short-leaf Pine CROP offering/removal '09 – '13
(by agency)**

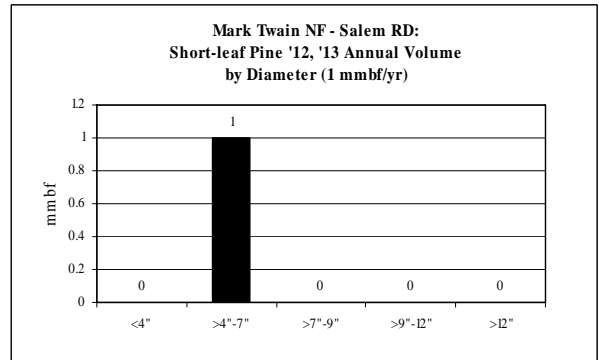
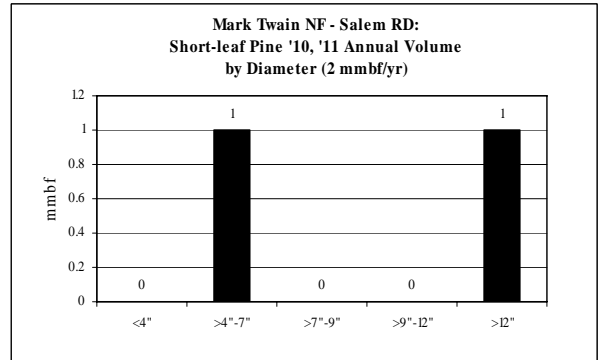
ROM # SLf P 1.5

gT = green tons (up to 7" dbh)
S = small log mmbf (>7"-12" dbh)
L = large log mmbf (>12" dbh)



D

Short-leaf Pine Mark Twain NF: Salem RD	5-yr = 9 mmbf
	<ul style="list-style-type: none"> • Unlevel supply from year to year
gT = 25,000	<ul style="list-style-type: none"> • <4" = 0% (0 mmbf) • >4"-7" = 56% (5 mmbf)
S = 0	<ul style="list-style-type: none"> • >7"-9" = 0% (0 mmbf) • >9"-12" = 0% (0 mmbf)
L = 4	<ul style="list-style-type: none"> • >12" = 44% (4 mmbf)



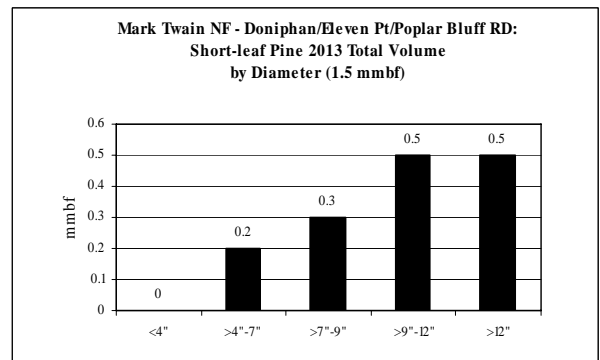
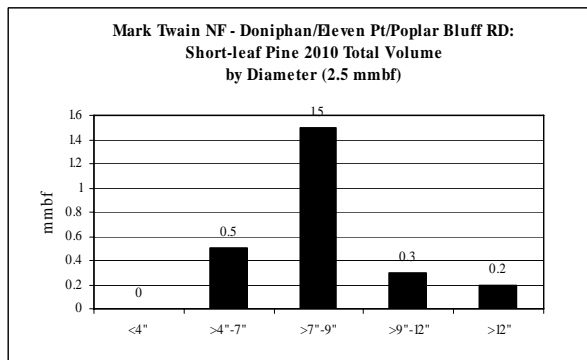
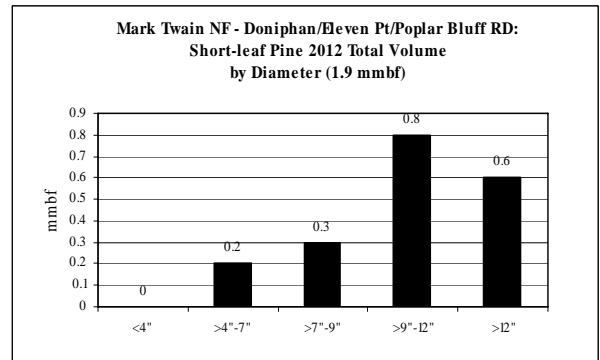
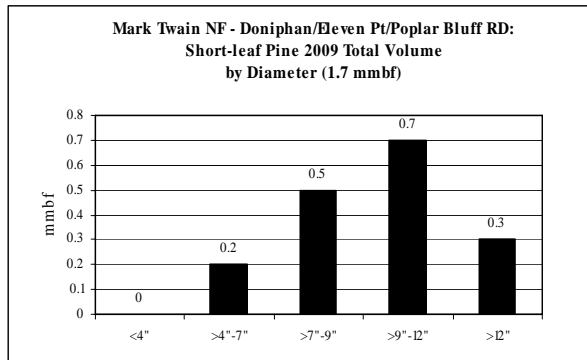
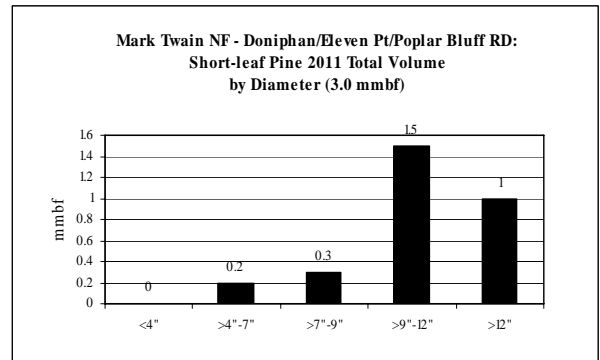
**Missouri: Short-leaf Pine CROP offering/removal '09 – '13
(by agency)**

ROM # SLf P 1.6

gT = green tons (up to 7" dbh)
S = small log mmbf (>7"-12" dbh)
L = large log mmbf (>12" dbh)

E

Short-leaf Pine Mark Twain NF: Doniphan/Eleven Pt/Poplar Blf RD	5-yr = 10.6 mmbf
	<ul style="list-style-type: none"> • Unlevel supply from year to year
gT = 6,500	<ul style="list-style-type: none"> • <4" = 0% (0 mmbf) • >4"-7" = 12% (1.3 mmbf)
S = 6.7	<ul style="list-style-type: none"> • >7"-9" = 27% (2.9 mmbf) • >9"-12" = 36% (3.8 mmbf)
L = 2.6	<ul style="list-style-type: none"> • >12" = 25% (2.6 mmbf)

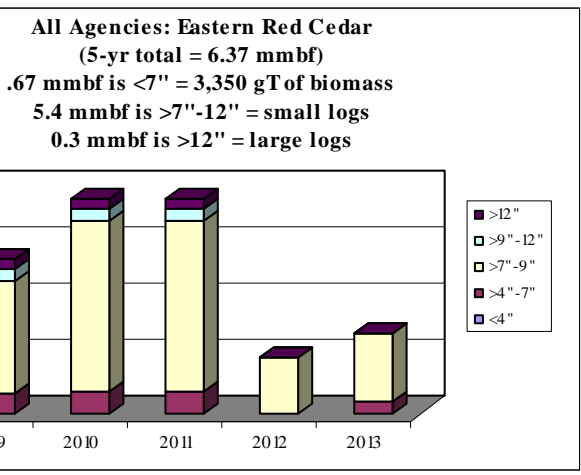
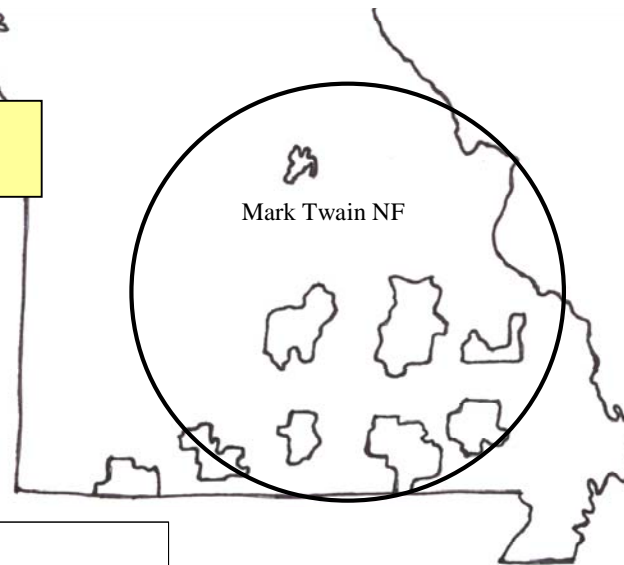


Missouri: Eastern Red Cedar CROP offering/removal '09 – '13
(gT = 3,350 / S = 5.4 mmbf / L = .3 mmbf)
(6.37 total mmbf)

ROM # ERC 1

gT = green tons (up to 7" dbh)
 S = small log mmbf (>7"-12" dbh)
 L = large log mmbf (>12" dbh)

Mark Twain NF: 100%
(gT = 3,350 / S = 5.4 / L = .3)



Eastern Red Cedar	gT	mmbf	
	Biomass	Small Log	Large Log
2009	850	1.1	0.1
2010	1000	1.6	0.1
2011	1000	1.6	0.1
2012	0	0.5	0
2013	500	0.6	0
Totals	3350	5.4	0.3
%	11%	85%	5%
mmbf	0.67		

6.37

Missouri: *Eastern Red Cedar* CROP offering/removal '09 – '13
(gT = 3,350 / S = 5.4 mmbf / L = .3 mmbf)
(6.37 total mmbf)

ROM # ERC 1.1

ERC = Eastern Red Cedar

gT = green tons (up to 7" dbh)
S = small log mmbf (>7"-12" dbh)
L = large log mmbf (>12" dbh)

Mark Twain NF:

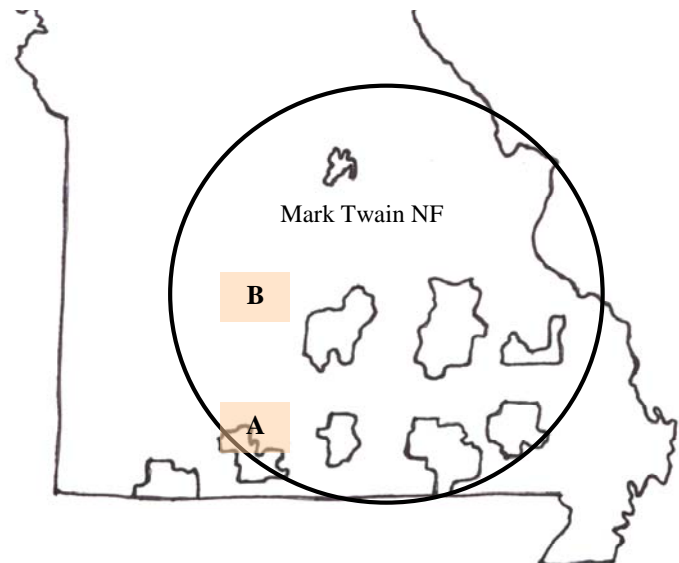
- A** *Ava/Cassville/Willow Springs RD* (gT = 3,350 / S = 3.4 / L = .3)*
- B** *Houston/Rolla/Cedar Creek RD* (gT = 0 / S = 2 / L = 0)
- C** Potosi/Fredericktown RD
- D** Salem RD
- E** Doniphan/Eleven Pt/Poplar Blf RD

MO Dept. of Conservation:

- F** Shannon/Reynolds Co.
- G** Butler Co.
- H** Bollinger Co.
- I** Dent Co.
- J** Wayne Co.

Ft. Leonard Wood:

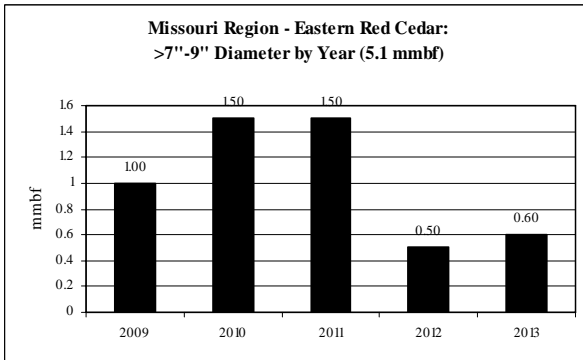
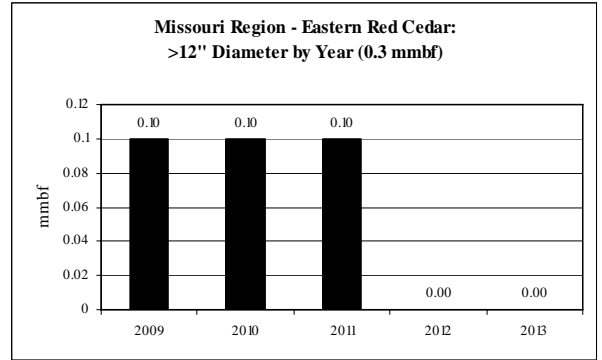
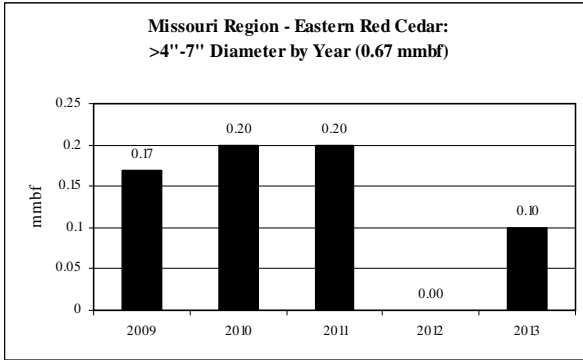
- K** Ft. Leonard Wood



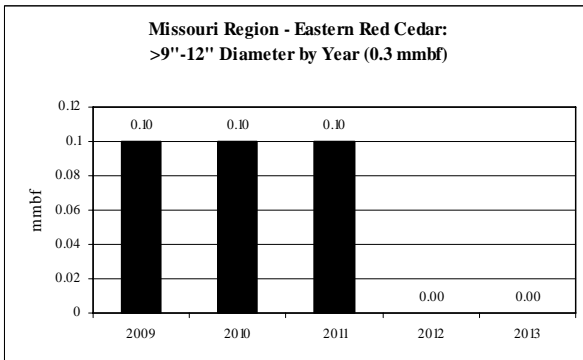
**italics/bold = species offering in CROP*

Eastern Red Cedar: Diameter by Year

ROM # ERC 1.2



Note: No volume for <4", dbh



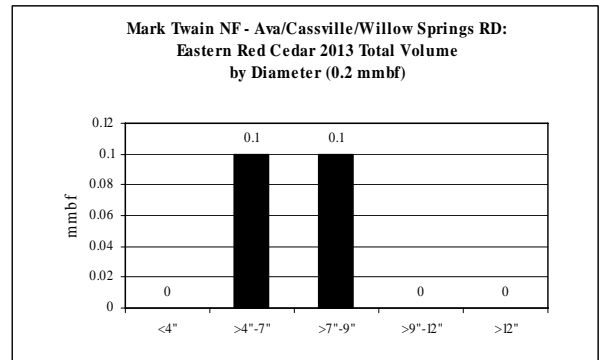
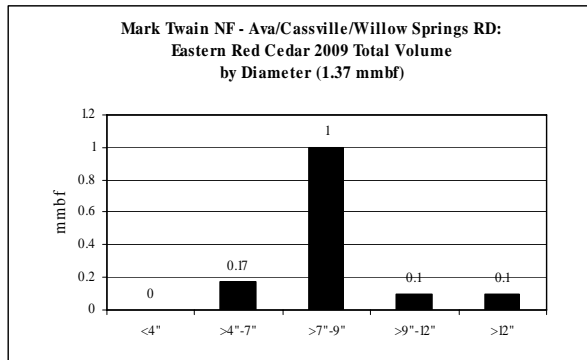
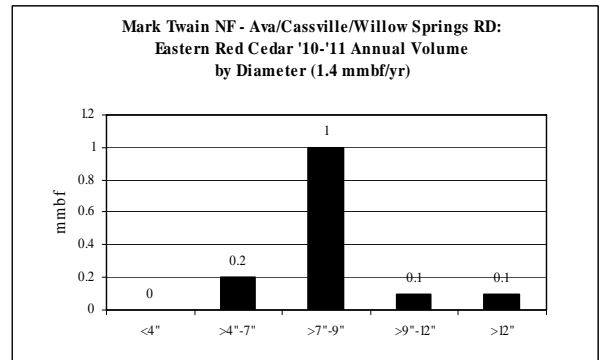
**Missouri: Eastern Red Cedar CROP offering/removal '09 – '13
(by agency)**

ROM # ERC 1.3

gT = green tons (up to 7" dbh)
S = small log mmbf (>7"-12" dbh)
L = large log mmbf (>12" dbh)

A

Eastern Red Cedar Mark Twain NF: Ava/Cassville/Willow Springs RD	5-yr = 4.37 mmbf
	<ul style="list-style-type: none"> • No offering in '12; unlevel supply from year to year
gT = 3,350	<ul style="list-style-type: none"> • <4" = 0% (0 mmbf) • >4"-7" = 15% (.67 mmbf)
S = 3.4	<ul style="list-style-type: none"> • >7"-9" = 71% (3.1 mmbf) • >9"-12" = 7% (.3 mmbf)
L = .3	<ul style="list-style-type: none"> • >12" = 7% (.3 mmbf)



B

Eastern Red Cedar Mark Twain NF: Houston/Rolla/Cedar Creek RD	5-yr = 2 mmbf
	<ul style="list-style-type: none"> • No offering in '09 but level supply for each year after
gT = 0	<ul style="list-style-type: none"> • <4" = 0% (0 mmbf) • >4"-7" = 0% (0 mmbf)
S = 2	<ul style="list-style-type: none"> • >7"-9" = 100% (2 mmbf) • >9"-12" = 0% (0 mmbf)
L = 0	<ul style="list-style-type: none"> • >12" = 0% (0 mmbf)

