

- ⇒ You've carefully thought out all the angles.
- ⇒ You've done it a thousand times.
- ⇒ It comes naturally to you.
- ⇒ You know what you're doing, its what you've been trained to do your whole life.
- ⇒ Nothing could possibly go wrong, right ?

Think Again.



Don't

Let This

Happen To You !!





Hazard Trees

A Way Of Life

Or

A Way Of Death

Hazard Trees!!

- ⇒ What is a Hazard Tree??
- ⇒ Are some trees more Hazard than others?
- ⇒ Where do we find Hazard Trees?
- ⇒ How do we deal with Hazard Trees?

What Is A Hazard Tree??

⇒ Larger Trees

⇒ Either Dead or Alive

⇒ Any tree that has the potential to fall on you!

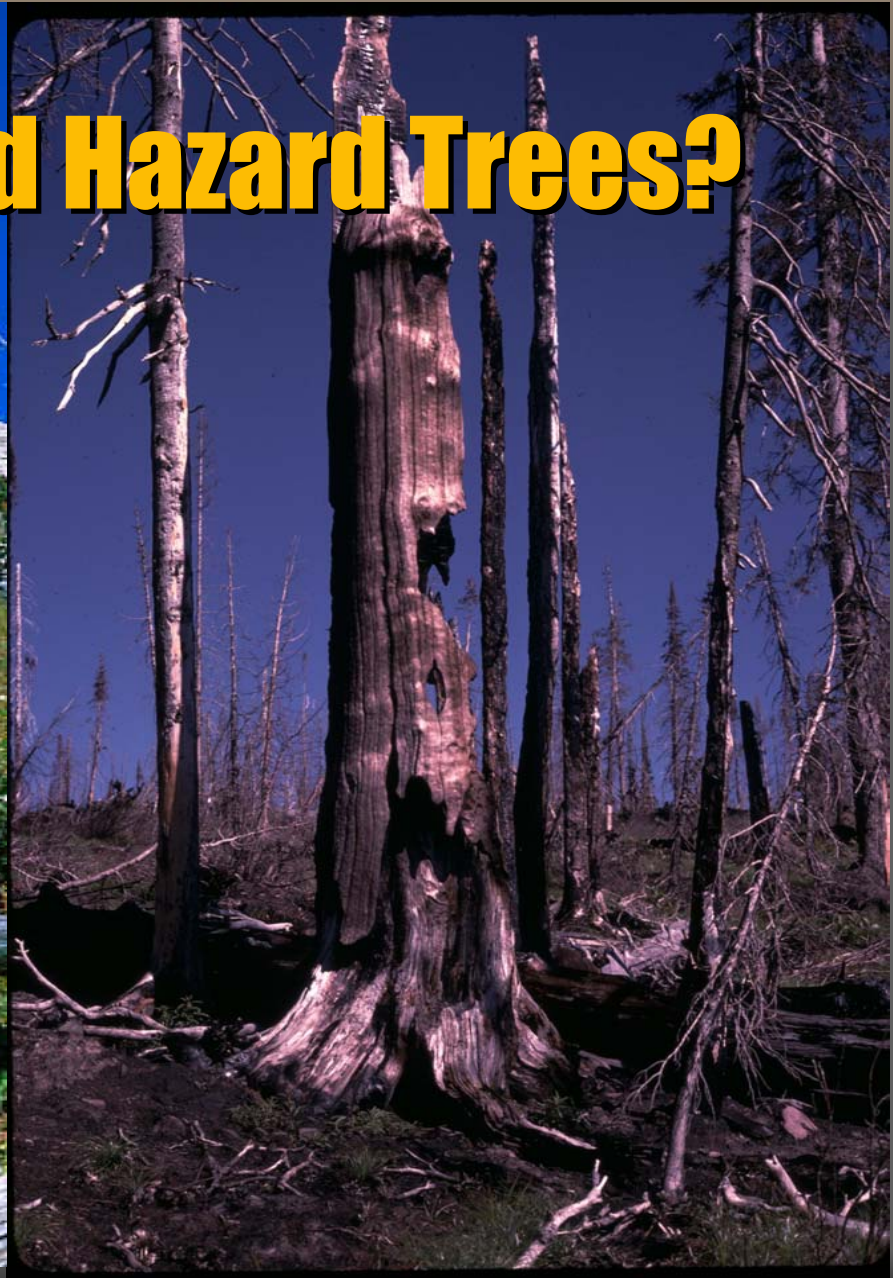
Are Some Trees More Hazardous Than Others?

- ⇒ Yes! (dead & alive)
- ⇒ Particularly Spruce & Lodgepole Pine
- ⇒ Other trees that perhaps have been weakened due to insect & disease.
- ⇒ And all of the above, especially during high winds!

Small Trees Are Not Hazard Trees

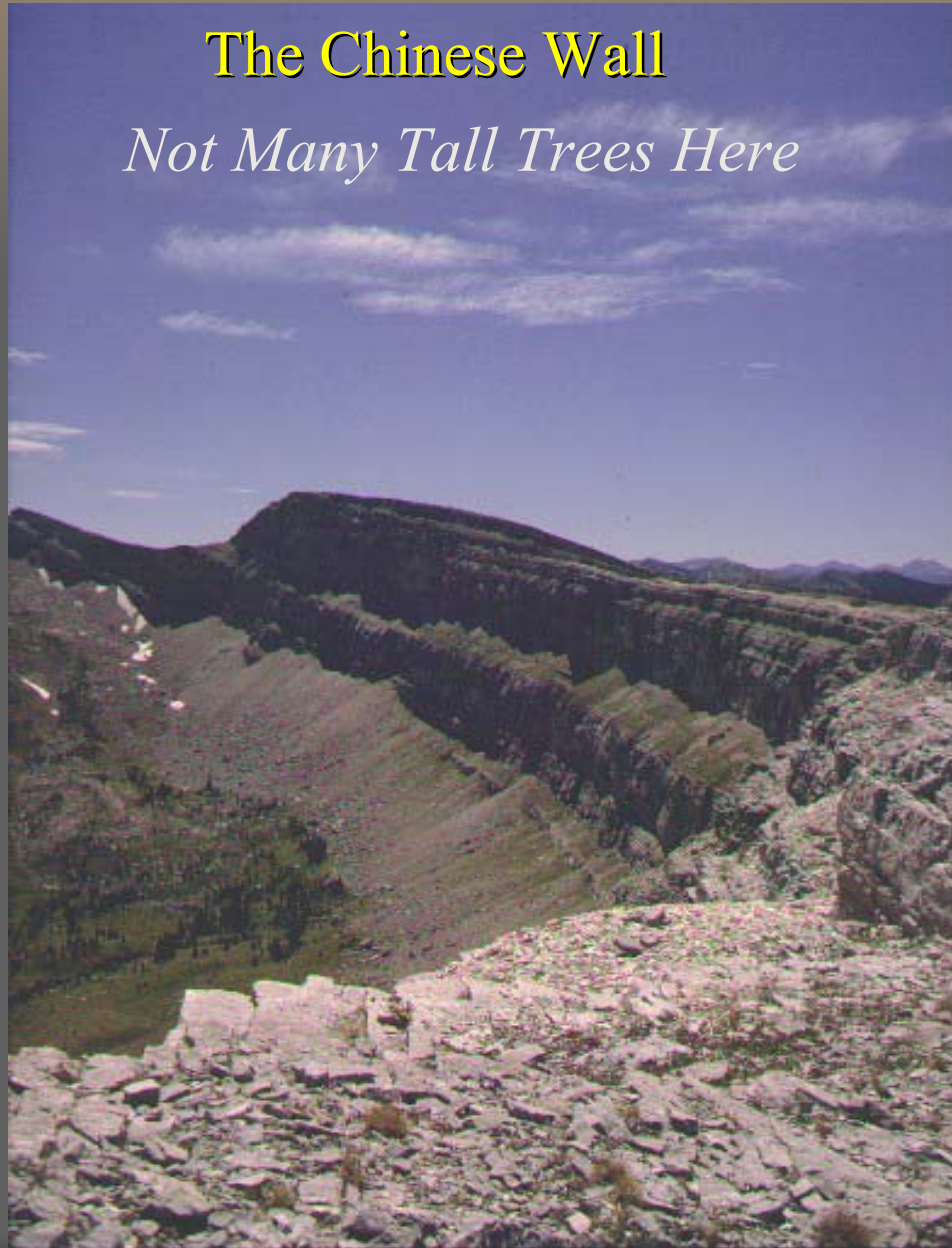


Where Do We Find Hazard Trees?



The Chinese Wall

Not Many Tall Trees Here



Elk Lake/Great Bear Wilderness



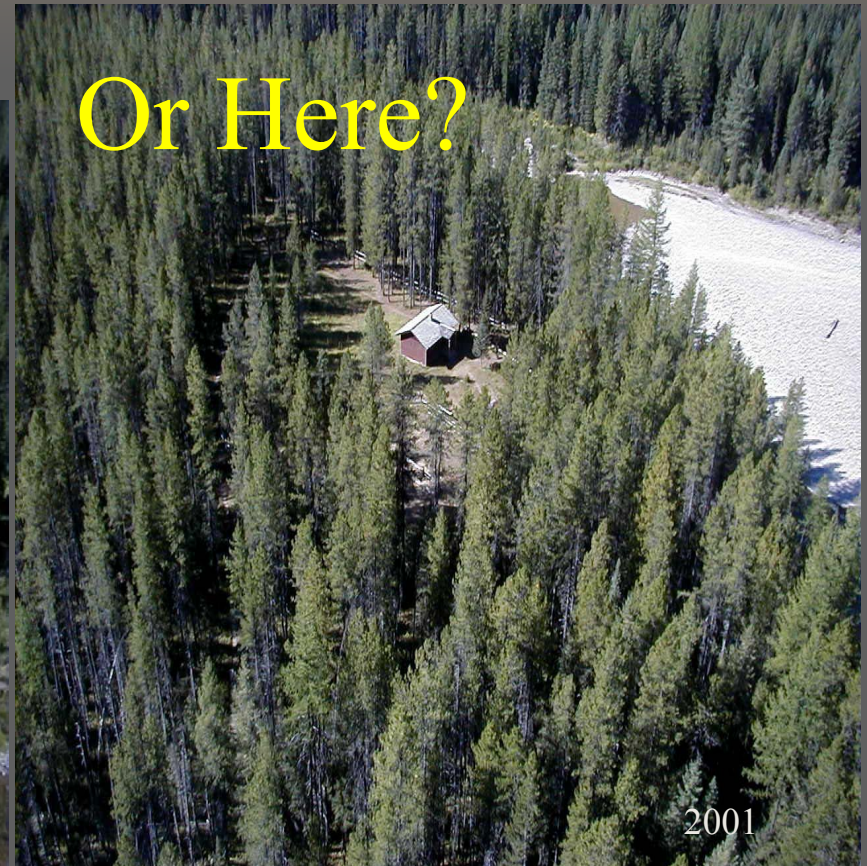
Not Many Tall Trees Here.

photo taken by Steve Wirt 2001.

Granite Cabin



Spruce Park

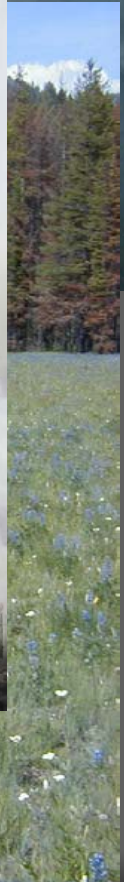


Spotted Bear Compound

And Here?

photo taken by Steve Wirt April 29, 2002.

Change!!



Be Aware of Change Around You

Spotted Bear Camp Ground.
1999



Stats

- ⇒ 75% of the fatalities are occurring on small incidents, type 3,4&5. Not on the larger incidents.
- ⇒ The 1993 National Snag Hazard Report states:
Since 1959 there have been 21 fatalities from falling trees. 17 of those (80%) have occurred since 1985.



How Do We Manage For Hazard Trees?

Cut'Em Down



And Haul' Em Away?



Identify Hazard Trees in Work Area



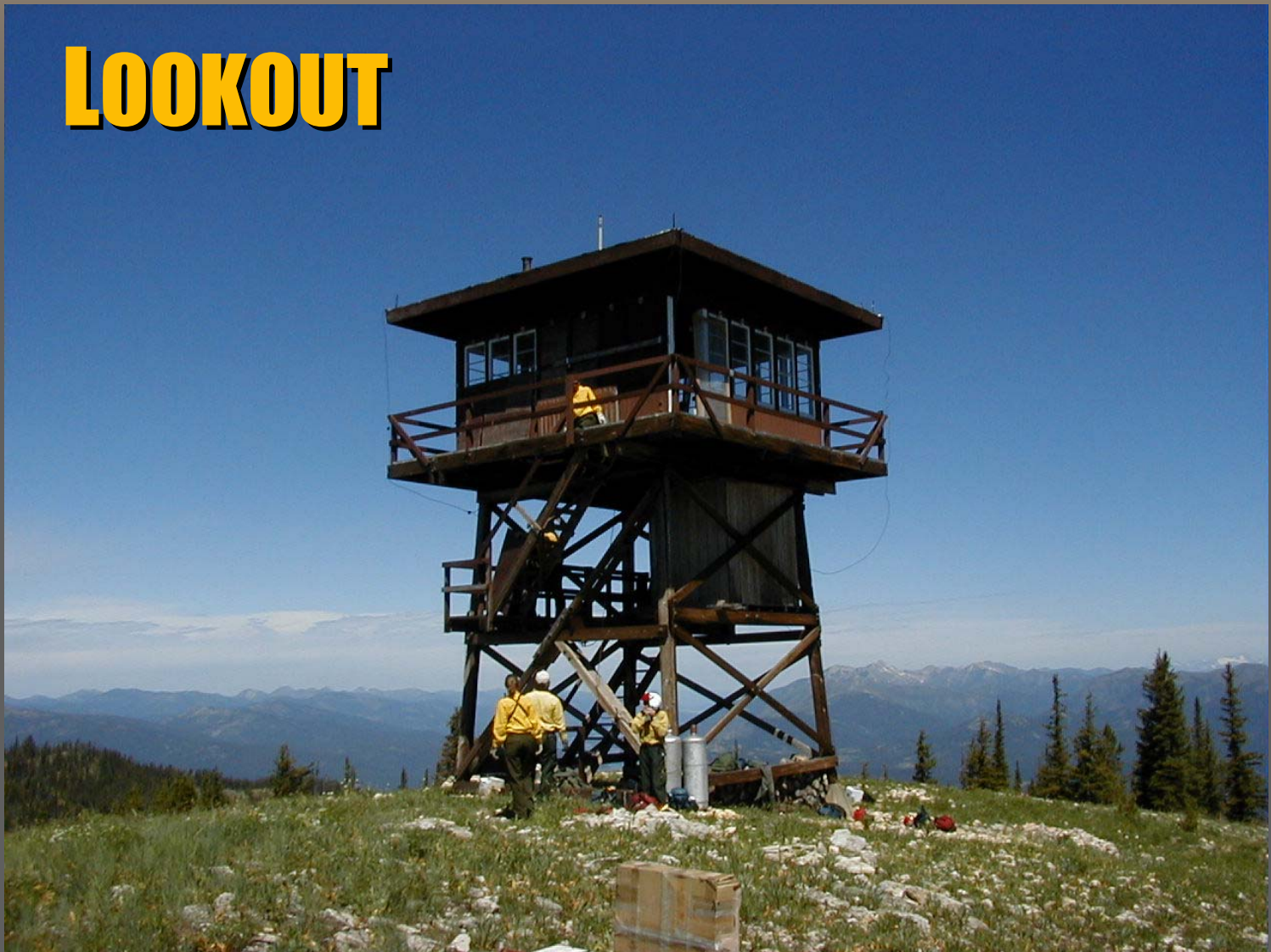
Evidence of Recent Wind Throw



Think !!

LCES

LOOKOUT



COMMUNICATE



ESCAPE ROUTE



SAFETY ZONE

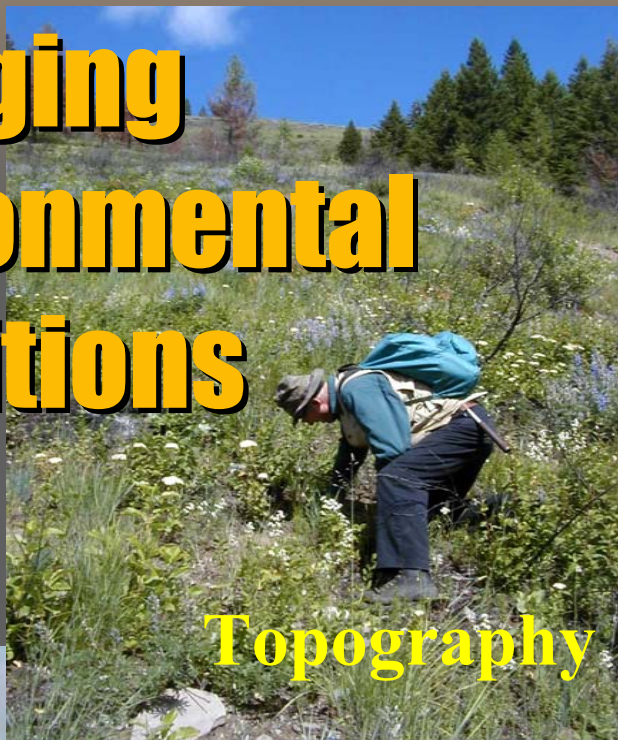


Change Location

Move Camp



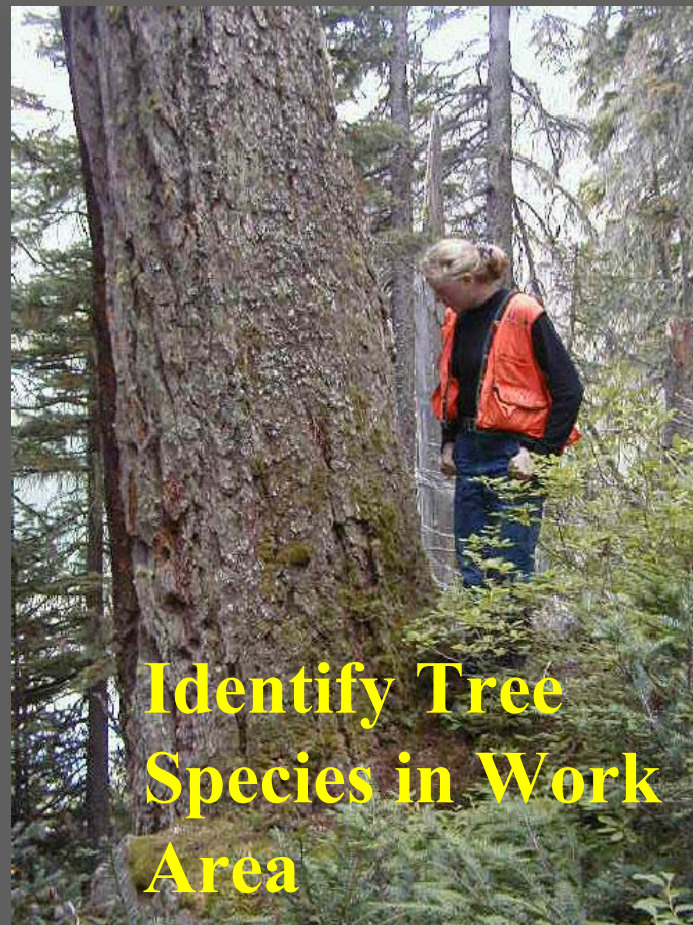
Be Observant To Changing Environmental Conditions



Topography



Weather



Identify Tree
Species in Work
Area



Attitude

and

Awareness



**What's Your
Attitude
Like Today?**



Awareness

in the

Field.

Environmental Awareness!

Much To Do About Something!

- ⇒ Snags in Your Area?
- ⇒ Are You Snag Intelligent?
- ⇒ Hazard Tree Risk In Your Work Area?
- ⇒ Hazard Tree Indicators?
- ⇒ Look Up, Look Down And Look All Around!
- ⇒ **S**top **N**otice **A**nd **G**o **S**lowly

Be Careful And Most Of All Have A Safe Summer!!

