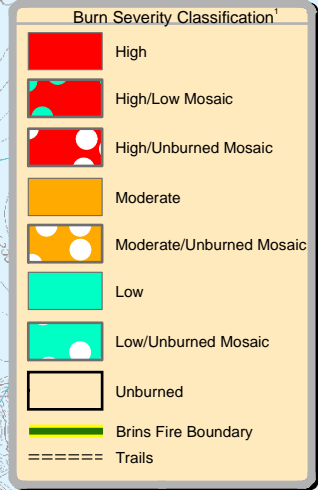
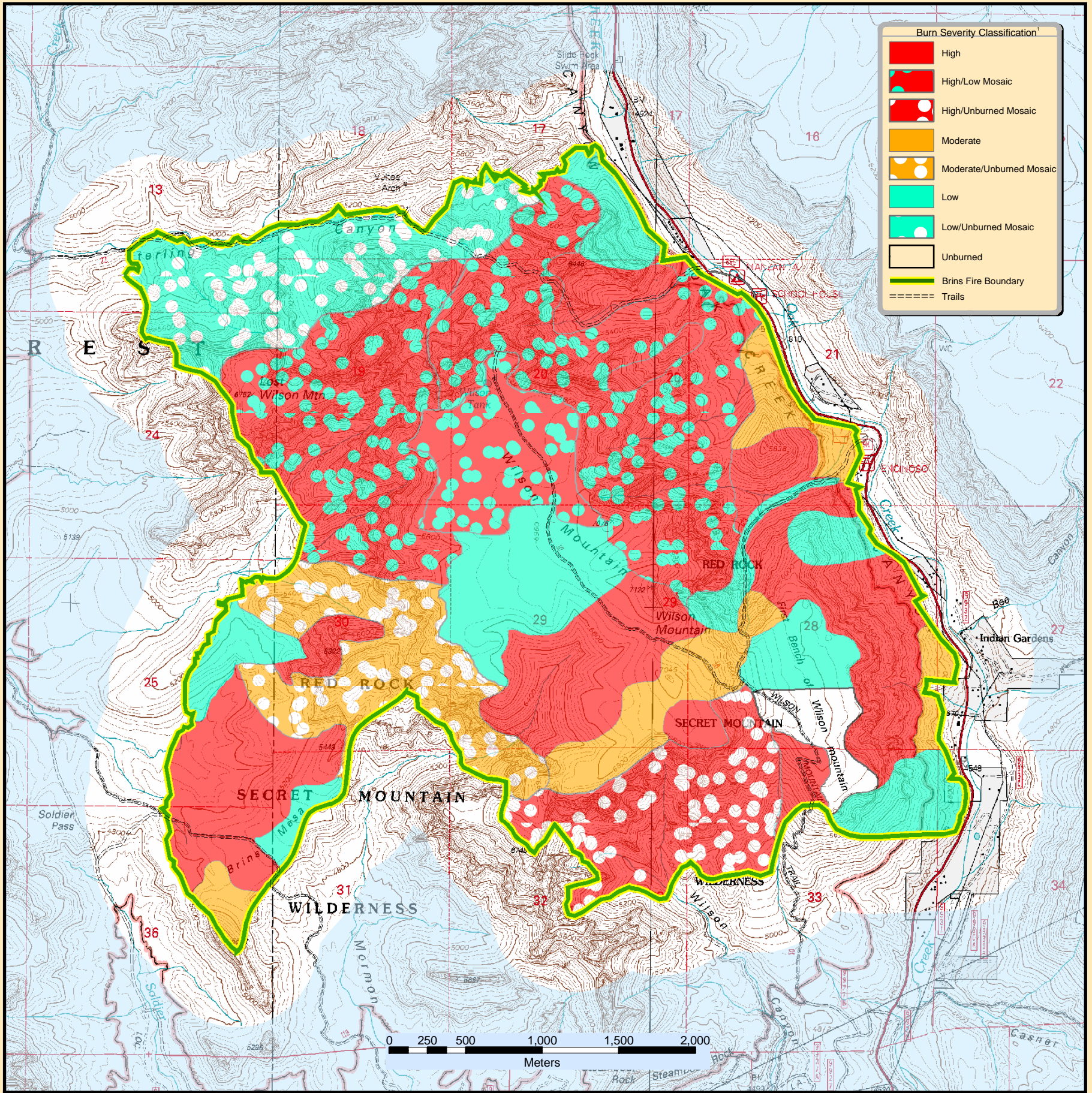


Brins Fire Burn Severity

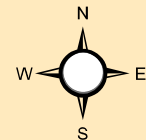


Brins Burn Severity Summary

¹ Brins Burn Severity Acreage Summary by Classification

| Classification | Acres* | Percent |
|--------------------------|--------------|---------|
| High | 900 | 21% |
| High/Low Mosaic | 1,400 | 33% |
| High/Unburned Mosaic | 300 | 7% |
| Moderate | 300 | 7% |
| Moderate/Unburned Mosaic | 300 | 7% |
| Low | 600 | 14% |
| Low/Unburned Mosaic | 400 | 9% |
| Unburned | 100 | 2% |
| Total | 4,300 | |

| Summary | Acres* | Percentage |
|--------------|--------------|------------|
| Rock Outcrop | 1,200 | 28% |
| Unburned | 900 | 21% |
| Low | 700 | 16% |
| Moderate | 300 | 7% |
| High | 1,200 | 28% |
| Total | 4,300 | |



Date Created: July, 3 2006
 Data Sources: Brins Fire Boundary
 Dated June 29th, P. Broyles Type I ICT
 Severity Polygons
 created by R. Steinke and C. Barrett,
 Trails and USGS Base Maps from COF
 GIS Library
 Datum: NAD 1927
 Projection: UTM Zone 12 N
 Base Maps: USGS 1027 7.5
 Wilson Mountain and Munds Park
 Cartographer: C. Barrett

This product is reproduced from geospatial information prepared by the U.S. Department of Agriculture, Forest Service. GIS data and product accuracy may vary. They may be developed from sources of differing accuracy, accurate only at certain scales, based on modeling interpretation, or incomplete while being created or revised, etc. Using GIS products for purposes other than those for which they were created may yield inaccurate or misleading results. This information was released on the indicated date. The Forest Service reserves the right to correct, update, modify, or replace GIS products without notification.

* All acreages are approximations and have been rounded to two significant digits