

**Post Fire Field Reconnaissance July 31, 2006
Brins Fire Area, Oak Creek Canyon
Red Rock Ranger District, Coconino National Forest**

Polly Haessig, Geologist, Mogollon Rim Ranger District
August 1, 2006



DSCN 1438 Debris flow that plugged pipe at crossing and flowed over the Highway. Stream is at ~ M.P. 377 where powerline crosses highway. Don't know exactly what this channel looked like before the fire – large boulders in background may have been the “debris “ part of the flow and the sediment trees, and wood debris are what backed up at the pipe inlet.



DSCN 1431. Same location as above but looking at Oak Creek side of the highway where mud and debris were cleared by equipment. This location is at an old road that joins up with the Wilson Trail and there are two pullouts on the east side of highway that were closed to public use.



DSCN 1584: Rock slide and sediment debris, location ~ M.P. 77.8, just north of Trout Farm about 300 feet. Didn't hike above the sandstone ledge but the immediate area above the rock outcrop was unburned and out of the fire perimeter. There is a concavity in the outcrop where much of the rock failed. The probable cause of the rock fall was concentration of water running over the top of the ledge loosening up the rock and soil along preexisting fractures. The lower part of the outcrop area is highly fractured. Need to recon the slopes above the ledge to see if channels were formed where the water concentrated up slope and if the burned area above was a factor. The upper part of the rock outcrop shows a water mark staining where water has flown before. The rock and mud piled up over the guard railing and flowed over into Oak Creek – see picture below.



DSCN 1586. Blurry picture of the remnant rock, wood debris and sediment piled up along the guard rail at same location as above.



DSCN 1510: Debris flow deposit at bone yard behind Oak Creek Visitor Center at Indian Gardens.



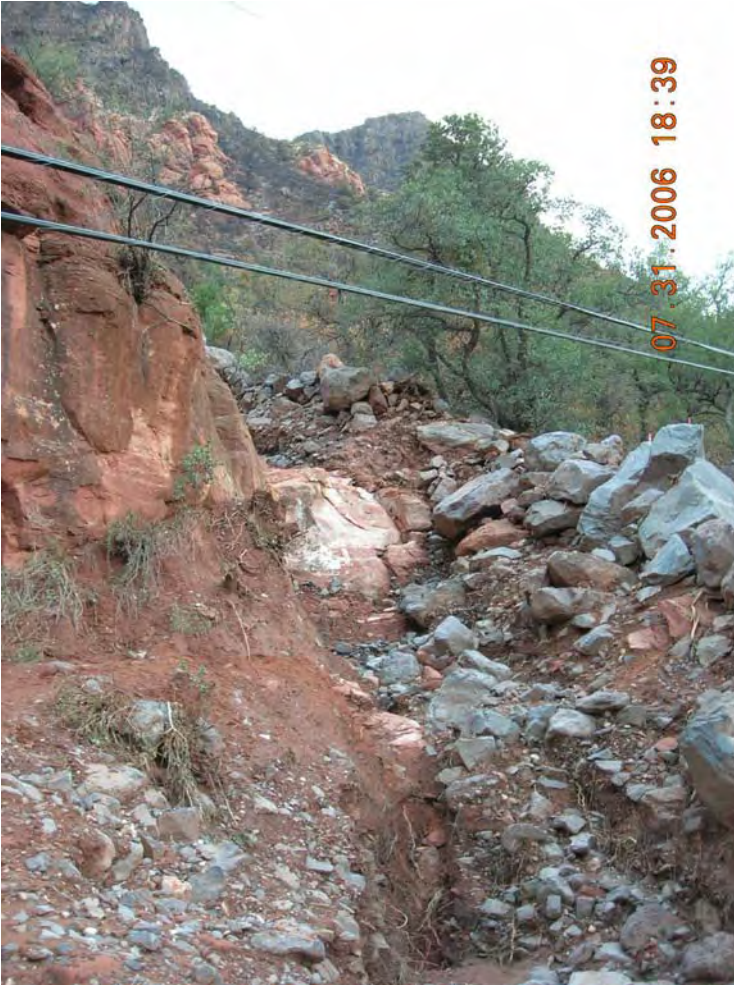
DSCN 1493: Debris flow in channel above the Visitor Center bone yard. Ann's hand is pointing to the height the water and debris flow in the channel. We could see an area at the head of the small watershed where there was erosion or possibly a shallow debris side hollow that initiated the sediment and rock flow.



DSCN 1550:
Sediment deposited
on terrace on the
east side of the
Highway (view
west towards the
Visitor Center).



DSCN 1517:
Debris flow
deposit a 100
feet south of
the Visitor
Center. Note
large sized
boulders 3
cubic feet and
less. Height of
deposits is
about 4 feet or
so.



DSCN 1564: Channel that was the source of the debris flow deposit on the highway in the previous picture. South of Visitor Center.



DSCN 1572: Sediment from the debris flow in the above picture was deposited in the front yard of the blue house just south of the Visitor Center area.



DSCN 1547:
Dairy Queen in
the early
evening of July
31, 2006 after
the mud
deposited in
front of it was
hosed off.



DSCN 1543:
Ash and mud
deposited in
the back of the
Dairy Queen.
Water and
sediment
flowed down
the slope on
the left side of
the photo.

DRAFT

DSCN 1521: View of the First Bench Wilson Mountain slopes above Indian Gardens.

