



**November 2008**

**Issue 85**

**STORIES TODAY**

1. OSU Metro High School student shadows Dr. Boris-Lawrie lab for a day
2. Dr. Radin guides her team in a robot competition
3. Dr. Maxey Wellman worked with eager students for an exciting event on campus
4. Nicole White engaged in increasing the awareness of cytometry
5. Announcements
6. Wellness Tip: Healthy Dining
7. Selected Recent Grants/Publications/Presentations/Awards/Appointments
8. Staff Profile: Elaine Bletz

**Veterinary Biosciences Outreach and Engagement Efforts: An Important Link to the OSU Academic Plan**

At Ohio State, *outreach and engagement* is defined as meaningful and mutually beneficial collaborations with partners outside the academic community. This may include partners such as those in education, business, and public and social service. <http://outreach.osu.edu/> This issue of BIOS features some of the many ways the faculty, staff, and students of the Department of Veterinary Biosciences are involved in outreach and engagement into the community.



**OSU Metro High School student shadows Dr. Boris-Lawrie lab for a day**

Dr. Kathleen Boris Lawrie and her students hosted a Metro High School student for a career “shadow day” on October 17. Metro High School <http://www.themetroschool.com/> is designed to serve students who want a personalized and extraordinary learning experience that prepares them for a connected world where math, science and technology are vitally



important. Metro High School has received significant support from Battelle, The Ohio State University and Coalition of Essential Schools National to design and open the school. Career Shadowing Day gives students an opportunity to learn more about a career by spending a school day with a professional on the job. The goal is for each student to participate in a meaningful shadowing experience in the Columbus area. This year, they were

pleased to invite 9<sup>th</sup> grader Hannah Hayes to observe the daily routine in the lab, use different instruments and tools, and to learn the basics of running experiments. She was delighted to

work alongside post-docs and graduates students in the lab. In the future, experiences like this will allow students to explore the opportunities for summer internships.

### **Dr. Radin guides her team in robot competition**

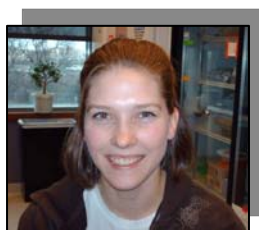


The FIRST organization (FIRST is an acronym for “Inspiration and Recognition of Science and Technology”) was founded in 1989 to inspire young people's interest and participation in science and technology <http://www.usfirst.org/default.aspx>. Their mission is to inspire young people to be science and technology leaders, by engaging them in exciting mentor-based programs that build science, engineering and technology skills, that inspire innovation, and that foster well-rounded life capabilities including self-confidence, communication, and leadership. Dr. Judith Radin is one of 2 coaches who mentor a FIRST Lego League (FLL) Robotics Team at Clintonville Academy. The team consists of 6 students, grades 3-9. The FIRST Lego League is joint effort between FIRST and the LEGO Company that sponsors competitions designed to encourage children from K through middle school to enjoy and excel in math and science. The competition involves designing a robot to perform specific tasks, a technical presentation, a science project (this year it involves investigating a local problem caused by climate and researching and designing possible solutions), and a teamwork exercise. During the competition, participants meet with Technical Judges who look at robot design, programming, and problem-solving strategies; Project Judges, who evaluate the research project, solution and outreach; and Teamwork Judges, who assess how well the group functions as a team. During the robot performance portion, students run their robot through a specific set of tasks with a 2.5 min time limit in front of an audience, similar to a sporting event. If you want to see an example of the robot performance runs, go to <http://www.youtube.com/watch?v=WNIGRSJ98C8> and watch last year's team put their robot through its paces.

### **Dr. Maxey Wellman worked with eager students for an exciting event on campus**

Dr. Maxey Wellman and Dr. Rebecca Urbiztondo, a first year clinical pathology resident, helped the Veterinary Explorers Post group conduct a hematology laboratory on October 15th. The Explorers group collaborates with partners outside the academic community and creates programs that benefit high school students with an interest in veterinary medicine. Exploring is a national career education program which provides hands-on activities for high school students at a worksite typically after the school day. Here in Columbus, the Exploring Program partners with more than 30 businesses and organizations to provide a variety of experiences for students to explore their career interests during their high school years. The high school students and Explorers group met with Drs. Wellman and Urbiztondo to review blood smears from a dog, a hawk, and an alpaca. Approximately 60 students participated in the event with a few parents joining in. They had a great time and the students thought it was a really fun evening. For more information on the Explorers, check out our website at <http://vet.osu.edu/4523.htm>

### **Nicole White: increasing the awareness of cytometry**



Nicole White (left) a staff member in the Department is a founding member of the Mid Ohio Cytometry Associates (MOCA). The group has been recently recognized by the International Society for Analytical Cytometry (ISAC) as a local ventures group to help facilitate the outreach and collaboration of research and education in cytometry. The group meets monthly to help others understand and utilize cytometry in their research. During the first year, the group expanded to include members from Cincinnati, Pittsburg and Cleveland in email discussions and meetings. Currently,

members are focused on presenting the inaugural Flow and Imaging Research Day on September 30, 2009 to bring a fundamental understanding to the basic principles and ideas of what cytometry applications can do to enhance research and develop novel ideas for use of cytometry in clinical and research applications. Last year, MOCA started out with 12 members and now it has grown to about 104. It is an ever growing opportunity to meet with local cytometry users and discuss opportunities in cytometry research. For more information, go to [www.centralohiocytometry.nexo.com](http://www.centralohiocytometry.nexo.com) or contact Nicole White, [white.1140@osu.edu](mailto:white.1140@osu.edu) to be put on the listserve for future seminar announcements. Nicole is a leading staff member of the Cytometry Core of the College. The Cytometry Core, formerly ImCore, is a college-wide service, supported by the Department of Veterinary Biosciences and the Comprehensive Cancer Center <http://vet.osu.edu/cytometrycore.htm>

**Veterinary Students Featured on OSU Website:** Dr. Nong Inpanbutr's study abroad trip to Thailand is featured on the university website. Checkout "Thai Homecoming" at: <http://www.osu.edu/features/2008/thailand/>

## Announcements:

**Offices closed: Veterans Day**, Tuesday, November 11 and **Thanksgiving**, Thursday, November 27

**Columbus Day (observed)**, Friday, November 28

**2009 Open Enrollment November 3-14.** Attend an Open Enrollment Forum to learn about medical plan changes-including premium rates, pharmacy benefits, and other benefit programs for 2009. The changes of your plan will be effective on 01/01/09. For more information: <http://hr.osu.edu/benefits/oe.htm>

**American College of Veterinary Pathologists/Society of Toxicologic Pathology Coalition Award:** The Department has been awarded a new position for a combined clinical pathology residency and graduate program position with funds provided by generous sponsorship from GlaxoSmithKline and the ACVP-STP Coalition. Research training includes experience with transgenic animal pathobiology and mouse phenotyping. In addition to mentorship from residency and graduate faculty advisors, the recipient will have the added benefit of an assigned mentor from GlaxoSmithKline. Residents will have opportunities to attend the ACVP and STP annual meetings, the Coalition Scientific Conference, and externships at the sponsor's site. For more information, contact Dr. Maxey Wellman at (614) 292-1877, [wellman.3@osu.edu](mailto:wellman.3@osu.edu) or visit the departmental website, [www.vet.ohio-state.edu](http://www.vet.ohio-state.edu).

## Wellness Tip: Healthy Dining



One of the healthiest food habits you can adopt may be one of the easiest; invite a friend over for dinner. "Our bodies crave connections to other people" says Henry Lodge, MD, coauthor of *Younger Next Year: Live Strong, Fit and Sexy – Until You're 80 and Beyond*. When we eat with other people, we are less likely to rush through our meal, which can inhibit proper digestion, and more likely to eat slowly and chew our food, which can help us more effectively absorb nutrients. So go ahead and set the table for two or more.

## Selected Recent Grants/Publications/Presentations/Awards/Appointments:

**Nicole White** attended the Great Lakes International Imaging Flow Cytometry Association Meeting September 19<sup>th</sup> to 20<sup>th</sup> to present a poster entitled, "Using Glo Germ Particles as a quality control for infectious cell sorting". Co-authors included Ms. Sarah Leavell and Drs. Mary Jo Burkhard, and Lawrence Mathes. Nicole was also recently nominated to serve on the International Society for Analytical Cytometry (ISAC) Membership Services Committee to help bring cytometry education and awareness to clinical and research applications.

**Sarah Leavell** attended the Clinical Cytometry Society Course and Meeting in Portland, Oregon October 10<sup>th</sup> to 14<sup>th</sup>. The course focused on enhancing leukemia and lymphoma diagnostics using flow cytometry. She attended not only a hands-on flow cytometry course where she got to use the latest in software, but also workshops and meetings to discuss the usage of different intracellular and cell surface markers.



### **Staff Profile: Elaine Bletz**

She is an Office Associate that has worked in the department for 19 1/2 years. Her responsibilities include purchasing, making travel requests, reimbursements, biweekly timesheets and so much more. She is also the coordinator that plans the annual picnic and holiday party that is always a great success. She is a former recipient of the Department's Distinguished Staff Award. Thank you for all your contributions to the Department Elaine!

Please send [comments or suggestions](#) to Ms. Elizabeth Hope, Program Assistant at: [hope.18@osu.edu](mailto:hope.18@osu.edu)