

National Daily Hog and Pork Summary

Des Moines, Iowa

Wed, Jan 14, 2009

USDA Livestock & Grain Market News

DAILY DIRECT HOGS PLANT DELIVERED as of 1:30 PM

NATIONAL - LM HG203:

Carcass Basis Negotiated Barrows & Gilts: **28,764**
 Compared to prior day's close, **0.34 higher**
 Base Price Range: **\$43.00 - \$62.84** Wtd Avg: **\$58.10**

IOWA/MINNESOTA - LM HG206:

Carcass Basis Negotiated Barrows & Gilts: **15,627**
 Compared to prior day's close, **0.46 higher**
 Base Price Range: **\$44.00 - \$62.84** Wtd Avg: **\$59.54**

WESTERN CORNBELT - LM HG212:

Carcass Basis Negotiated Barrows & Gilts: **19,070**
 Compared to prior day's close, **0.57 higher**
 Base Price Range: **\$43.00 - \$62.84** Wtd Avg: **\$59.79**

EASTERN CORNBELT - LM HG210:

Carcass Basis Negotiated Barrows & Gilts: **9,506**
 Compared to prior day's close, **0.86 higher**
 Base Price Range: **\$44.00 # \$59.46** Wtd Avg: **\$54.78**

NATIONAL DAILY LEAN HOG SLTR COST - LM HG213

Tuesday, 13-Jan-09	Head Count	Avg Carcass Wt	49-50%	51-52%	53-54%
	177,600	205.47	\$54.65	\$56.45	\$58.39

USDA NATIONAL CARLOT PORK REPORT - NW LS500

Carcass Cutout Values		Change:	
Primal Loin	76.32		0.66
Primal Butt	58.50		0.89
Primal Picnic	38.17		(-5.87)
Primal Rib	94.58		(-0.26)
Primal Ham	40.07		(-5.55)
Primal Belly	66.17		0.90
Total Loads	104.0	Lds	
Pork Cuts	88.0	Lds	
Trim/Process Pork	16.0	Lds	

DAILY EST. HOG SLAUGHTER UNDER FIS - SJ LS710

Today (est)	439,000
Week Ago (est)	433,000
Year Ago (act)	418,000
Week to Date (est)	1,279,000
Same Period Last Week (est)	1,302,000
Same Period Last Year (act)	1,273,000

CME LEAN HOG CLOSE

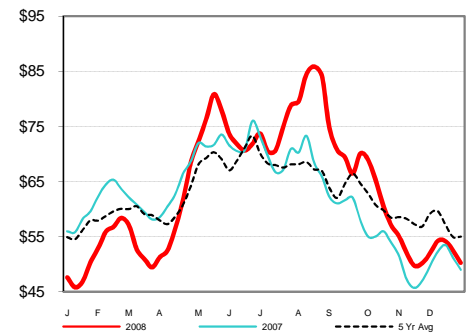
	High	Low	Settle	Change
Feb	61.00	59.10	59.93	(-1.52)
Apr	66.95	64.55	66.70	(-0.57)
May	78.50	75.83	78.20	(-0.62)
June	79.05	76.83	79.03	(-0.62)

CME Lean Hog Delayed Futures - Pit-Traded

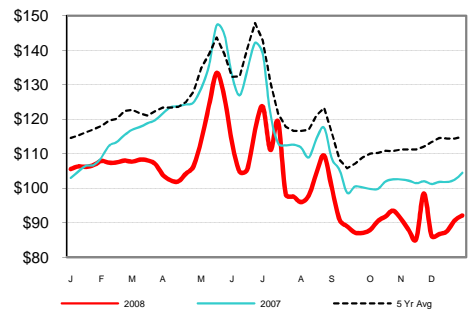
IOWA-SOUTHERN MINNESOTA WEEKLY AVERAGE WEIGHT - NW LS720

For Weekending Sat, 10-Jan-09	Week Ending	Head Count	Average Weight
	1/10/2009	438,000	270.6
Week Ago:	1/3/2009	351,000	269.4
Year Ago:	1/12/2008	432,000	271.2

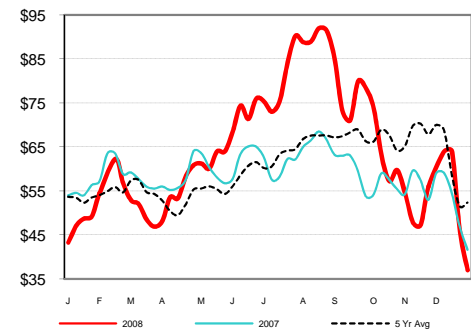
Weekly National Hog P.M. Wtd. Avg



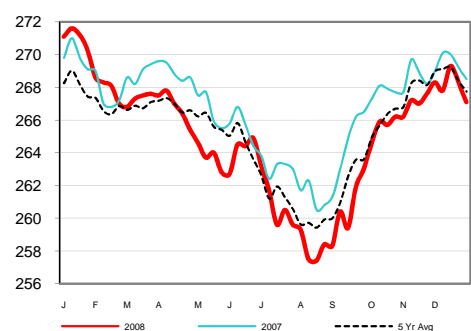
Weekly Sparerib Primal Value



20-23# TS1 Ham Weekly Wtd Avg



Iowa-S.MN Average Hog Weight



USDA Livestock & Grain Market News

Des Moines, Iowa

Phone: 515-284-4460

Email: desm.lgmn@usda.gov

www.ams.usda.gov/LSMarketNews