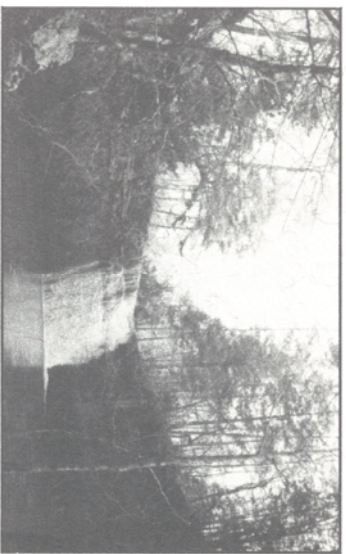


## MOCCASIN GAP HORSE TRAIL is

located in the Ozark National Forest, Bayou Ranger District north of Russellville on Hwy 7. It consists of four major loops with many inner loops totaling 28 miles. Trails that are on existing Forest Service roads are currently open to horses, motorized vehicles and mountain bicycles -- so watch out for other users. Some newly constructed parts of the trail are not safe for ATVs and are designated for horses only.

**Slave Mill Falls Loop (Orange ●)** begins at the horse camp and meanders along Moccasin Creek past several beautiful waterfalls. This is a good ride for even inexperienced riders. Slave Mill Falls connects directly to Gap Hollow Loop (blue) and to Black Oak Ridge Loop (pink).



**Black Oak Ridge Loop (Pink ◆)** consists of one large loop that connects directly to Slave Mill Falls Loop (orange) and High Mountain Loop (yellow). Much of this loop is off forest roads and travels along the ridge above Moccasin Hollow providing a beautiful view. Approximately half of this trail is for horse use only. There is easy access to Mack's Pines from the south end of this trail if you need to pick up supplies. Use caution when crossing Highway 7.

## High Mountain Loop (Yellow ■)

is the longest loop made up by a series of trails which can be ridden in many combinations. The outermost loop of High Mountain crosses Moccasin Creek twice and then follows it for some distance. The scenery is spectacular and includes waterfalls and overlooks. The trail along this section is rocky and very steep for about two miles and is not recommended for novice riders and/or inexperienced horses. Much of the remainder of High Mountain Loop is on old logging roads and is easily traveled by all riders.

**Gap Hollow Loop (Blue ▲)** leaves from the horse camp. It is a combination of timber roads and trails. The northern trail was constructed for the use of horses only. It offers some secluded, rustic riding. Gap Hollow Loop is a more challenging trail than Slave Mill Falls, yet is easy enough for any rider to enjoy. It is the closest access to High Mountain Loop from the horse camp.

### Trail Markings

You will encounter many roads and trails that leave or cross the marked trails. If they aren't marked, they aren't part of the trail system. Please stay on the trails. Trails are marked in both directions with color-coded shapes marked on the trees. Connector trails are marked in the color towards which you are riding. For example, the trail connecting Gap Hollow Loop (blue) and High Mountain Loop (yellow) is marked blue if you are heading east and yellow if you are traveling west. In addition to tree markings, junctions are marked with letters on brown posts indicating which junction you are at and the direction of the nearest junctions with arrows.

### Horse Camp Information

There are 17 graveled parking spurs at the camp available on a "first-come" basis. Each spur is provided with a tether post and a fire ring for cooking. Facilities include municipal water, trash cans and toilets. Groceries, gas, and showers are available at Mack's Pines, located on Highway 7, two miles south of the main entrance.



Hobbling is permitted.



Riders should wear hunter orange during spring and fall hunting seasons.



Please put all litter in the trash cans.



Scatter hay and manure before leaving the horse camp.

In case of medical emergency, call (479) 968-4567. An emergency evacuation plan is posted on the camp bulletin board and at Mack's Pines.

We hope you enjoy riding the trails. We are interested in your comments and suggestions. Please leave comments in the box provided at the trailhead, or contact the:

Bayou Ranger District  
12000 SR 27  
Hector, AR 72843  
(479) 284-3150

# Moccasin

# Gap

# Horse Trail



Bayou Ranger District  
Ozark National Forest

Forest



Service

United States Department of Agriculture

R8-RG 98

Slightly Revised June 2003

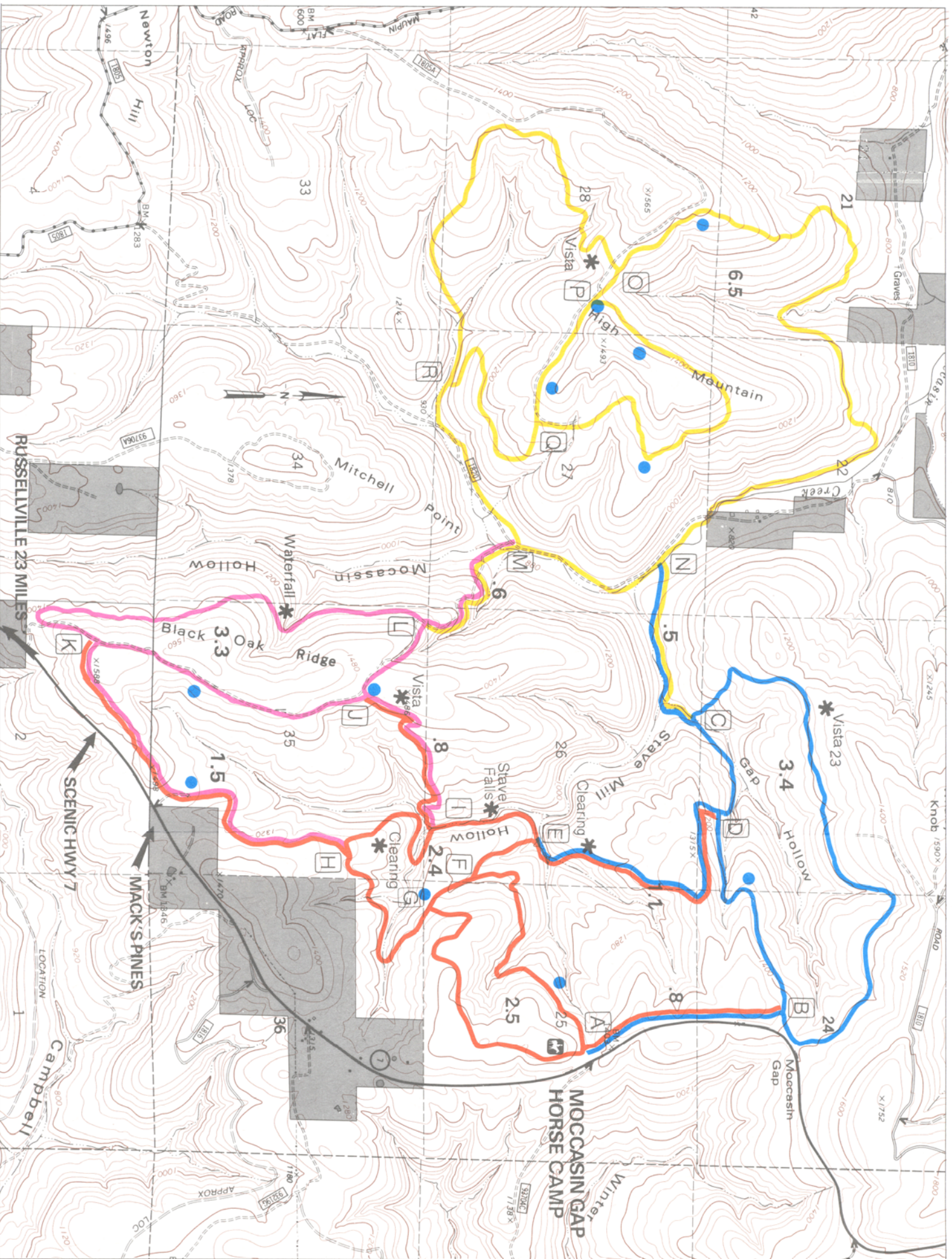
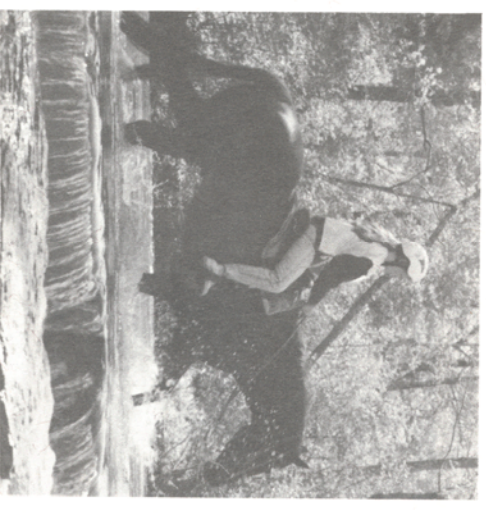
# Moccasin Gap Horse Trail

Ozark-St. Francis National Forest

Bayou Ranger District

- ▶ Gap Hollow Loop
- High Mountain Loop
- Slave Mill Falls Loop
- ◆ Black Oak Ridge Loop
- Pond
- ✱ Special Scenic Area

Mileage within loop indicates the distance around that loop. Other mileages indicate the distance between loops.



The U.S. Department of Agriculture (USDA) prohibits discrimination in all its programs and activities on the basis of race, color, national origin, sex, religion, age, disability, political beliefs, sexual orientation, and marital or family status. (Not all prohibited bases apply to all programs.) Persons with disabilities who require alternative means for communication of program information (Braille, large print, audiotape, etc.) should contact USDA's TARGET Center at (202) 720-2600 (voice and TDD). To file a complaint of discrimination write USDA, Director, Office of Civil Rights, Room 326-W, Whitten Building, 14th and Independence Avenue, SW, Washington, DC 20250-9410 or call (202) 720-5964 (voice or TDD). USDA is an equal opportunity provider and employer.