



U.S. Department of Agriculture
Forest Service
Southern Region

Traveling the Backcountry

Ozark National Forest



... a guide to designated off-highway vehicle routes

Learn the state laws

Off-highway vehicle (OHV) use is rapidly increasing on public lands in Arkansas. Many miles of forest roads offer unlimited enjoyment for responsible OHV enthusiasts. Providing safe, enjoyable recreation opportunities is a priority for forest managers. For your safety, for the safety of other visitors, and for the health of the forest, please **Ride 4 Keeps**. See **Ride 4 Keeps** guidelines in this publication.

Arkansas State Regulations

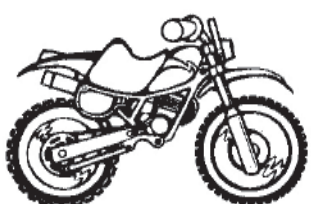
All off-highway three and four-wheeled all-terrain vehicles must be registered with the Arkansas Department of Revenue. Upon registration, the OHV will be assessed and the owner will be charged a **"one time"** fee of approximately \$10 for title, registration and a decal that will be placed permanently on the OHV. The decal is not a forest pass. It fulfills state requirements only. Call your local county revenue department for more information.

Arkansas State Requirements

- Persons less than 12 years of age are prohibited from operating OHVs unless accompanied by an adult 18 years of age or older.
- Operating an OHV at speeds greater than reasonable is prohibited.
- Headlights and taillights must be utilized when operating an OHV between one-half hour after sunset to one-half hour before sunrise.
- Each OHV must have a muffler in good working condition and be equipped with an approved spark arrester. (Should come from the factory meeting this requirement.)
- When two or more OHVs are operating together on a road, they should be operated in single file.
- All OHV operators must comply with applicable Arkansas state laws governing the use of motor vehicles.
- Operators are prohibited from operating any vehicle while under the influence of alcoholic beverages or narcotics.

Arkansas Game and Fish Commission Regulations

The following regulations apply only to Arkansas Game and Fish Commission (AG&FC) owned or leased Wildlife Management Areas (WMAs) such as Gulf Mountain, Cedar Creek, Point Remove and Gene Rush. The AG&FC does not allow OHVs on state-owned WMAs except to those people who can prove permanent disability and have received a Mobility Impaired Program card from the Game and Fish Commission. These AG&FC OHV permits are not applicable to Forest Service land and do not entitle the rider to go off roads or trails or on closed roads.



Understand the policy

This publication provides information on designated travel routes within the Ozark National Forest in Arkansas.

In national forests across the United States, unmanaged recreation has been identified as a major threat to the health of public lands. To address this growing problem, the Forest Service announced a Travel Management Rule in 2005 that governs the use of OHVs and other motor vehicle use on all national forests and grasslands. The rule states that motor vehicle use on public lands managed by the Forest Service will be limited to a system of designated routes.

This rule is nothing new on the Ozark National Forest. The policy in the 1986 Forest Land and Resources Management Plan states, "All areas of the Ozark National Forest are closed to off-highway vehicle use, except open roads and trails (subject to State law), to minimize disturbance, environmental damage and other user conflicts."

The initial designation of OHV routes is complete, but this process is far from over. Phase II of route designation rests with you. Share your suggestions for further OHV trails with the local District Ranger. Volunteer with other groups to enhance opportunities in your favorite areas. Please remember to consider public safety, environmental concerns and threatened and endangered species when making suggestions. New routes will be evaluated and added as feasible with new maps printed annually as routes are added.



Learn where to ride

Off-highway vehicle use on national forest land is a favorite form of recreation and is increasing in popularity. Over the last 10 years, there has been a significant increase in the numbers and varieties of OHVs using the forest, including three- and four-wheelers, dune buggies, dirt bikes and sport utility vehicles. Other forms of recreation, such as hiking and horseback and mountain bike riding, are also on the rise across the forest.

More than 1,100 miles of designated routes have been identified that provide a variety of opportunities for OHV enthusiasts across the Ozark National Forest. These routes include approximately 900 miles of existing forest system roads. An additional 160 miles of designated multi-use trails can be enjoyed at Huckleberry Mountain, Brock Creek, Mill Creek and Moccasin Gap. Other routes continue to be developed.

In addition to these designated routes, many more miles of open forest system roads are available to licensed motor vehicles but are not shown in this publication, which focuses solely on designated OHV routes. Most campgrounds are closed to OHV use. Be sure to check local bulletin boards for specific information. Please carry this map with you to ensure you are riding on safe and legal designated routes.

Practice responsible OHV riding

Many national forest roads and trails are shared by various groups, as well as other vehicle traffic. Please use caution and courtesy when encountering another visitor. An OHV's ability to accelerate and maneuver quickly can be exhilarating, but can pose problems on trails shared with hikers, horseback riders, mountain bike riders or other OHV riders. Anyone can ride fast, but it's the skilled rider who can ride slowly over challenging terrain with minimal impact to the ground. Skill and common sense, not speed, will help you get there smoothly, safely and in style. During hunting seasons, please be considerate of others sharing the forest with you.



Where do you want to travel?

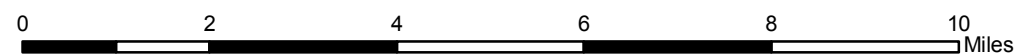
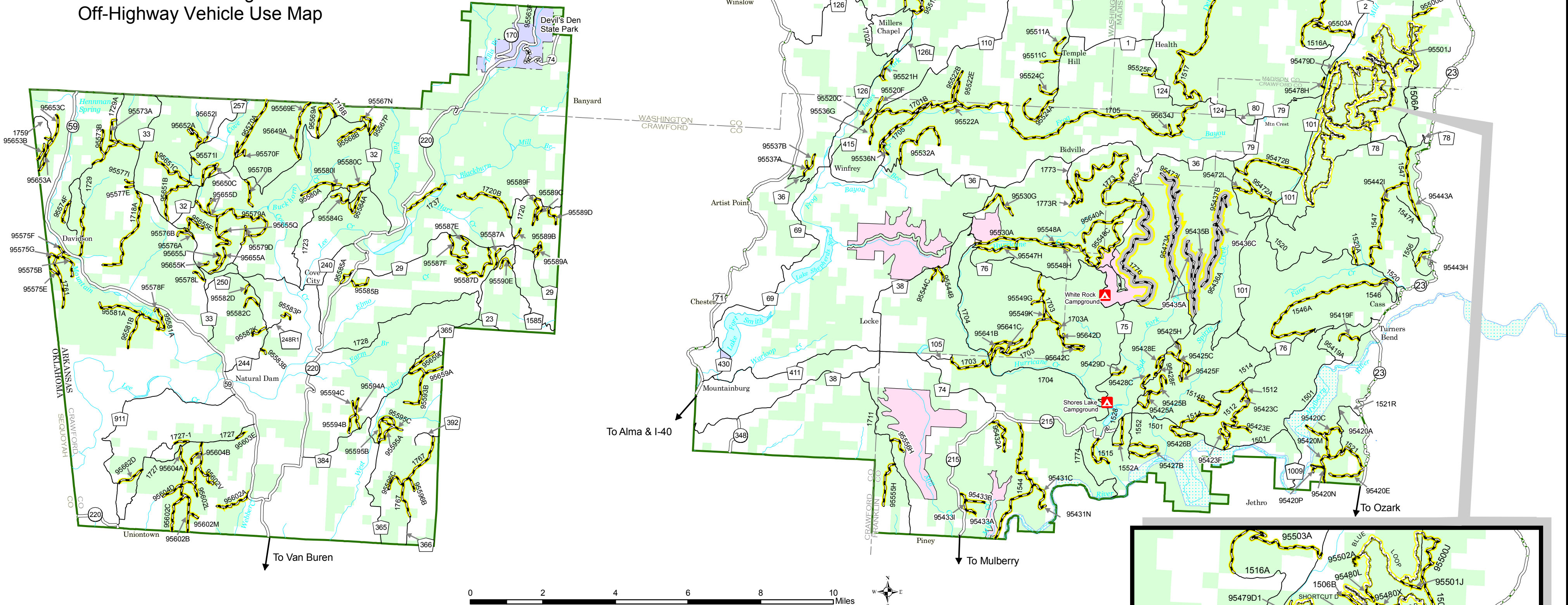
Find the general location on this map, then turn to the maps inside for off-highway vehicle routes and detailed information.



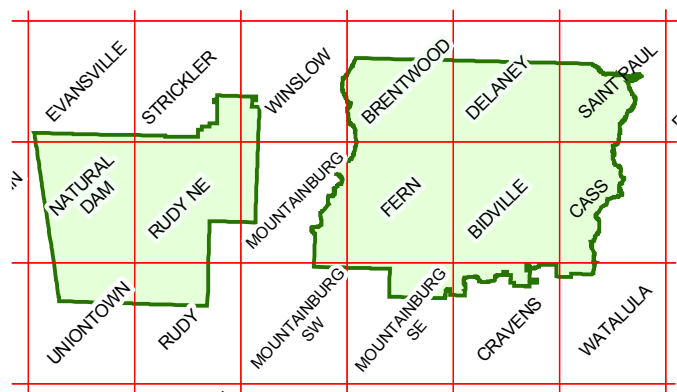
MAP A

Ozark National Forest Boston Mountain Ranger District Off-Highway Vehicle Use Map

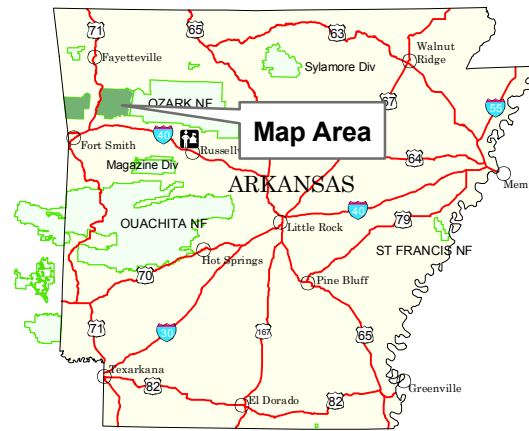
MAP A



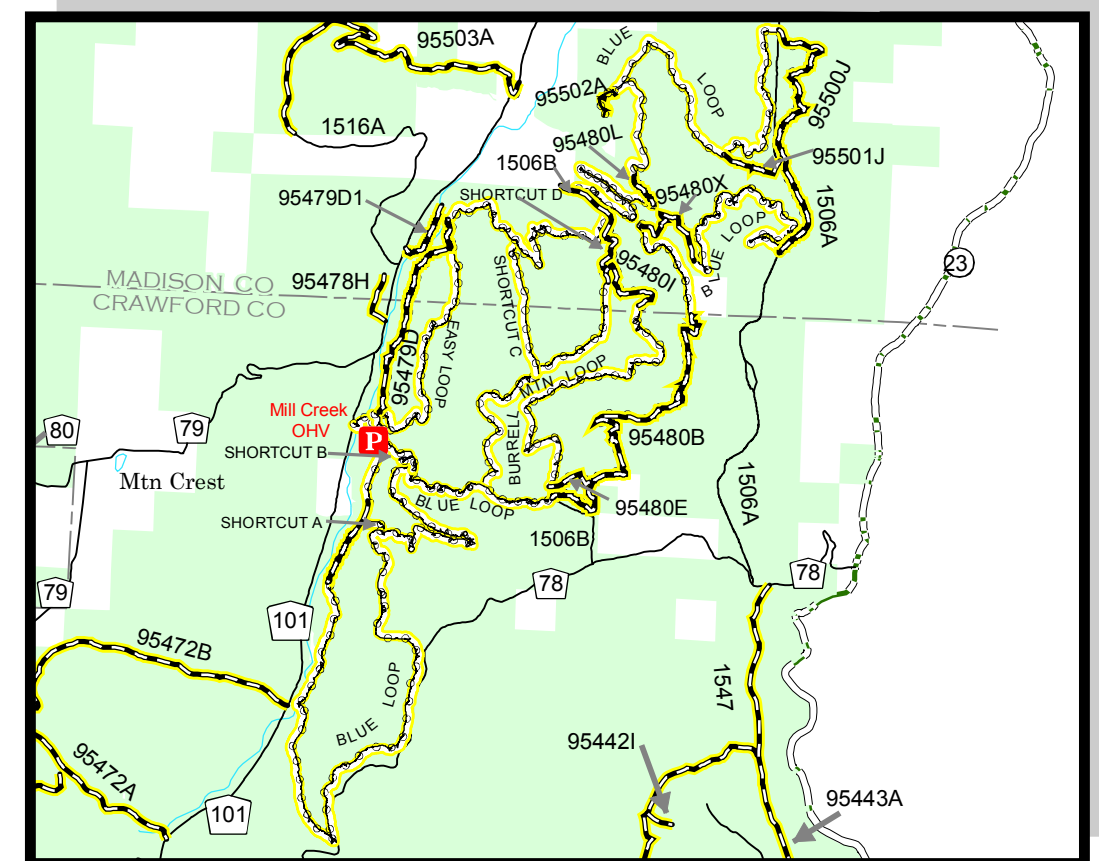
INDEX TO TOPOGRAPHIC MAPS



- Roads Open to All Vehicles
- Seasonal Roads Open to All Vehicles
(Check with local district office for closure dates.)
- Seasonal Roads Open to Highway Legal Vehicles Only
(Check with local district office for closure dates.)
- Trails Open to Motorcycle & ATV
- National Forest Boundary
- County Boundary
- State Highway
- OHV Access Roads
(Open to Highway Legal Vehicles)
- Streams
- Ozark National Forest
- Special Interest Areas
- Wild and Scenic River Corridor
- Forest Service Campgrounds
- Parking Area
- ROUTE MARKERS**
- Interstate
- U.S.
- State
- County
- 1120 National Forest



Topographic maps are available from the Branch of Distribution
U.S. Geological Survey, Box 25286, Denver Federal Center, Denver, CO 80225
or
www.usgs.gov





MAP B

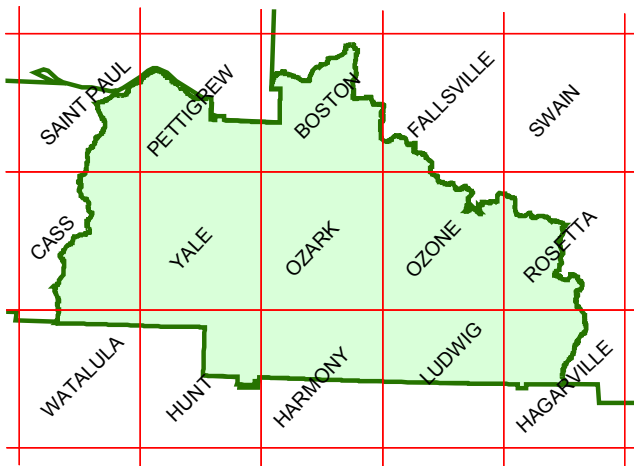
Ozark National Forest Pleasant Hill Ranger District Off-Highway Vehicle Use Map

- Roads Open to All Vehicles
- Seasonal Roads Open to All Vehicles
(Check with local district office for closure dates.)
- Seasonal Roads Open to Highway Legal Vehicles Only
(Check with local district office for closure dates.)

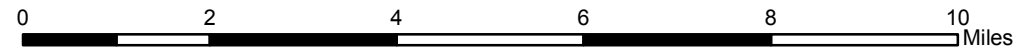
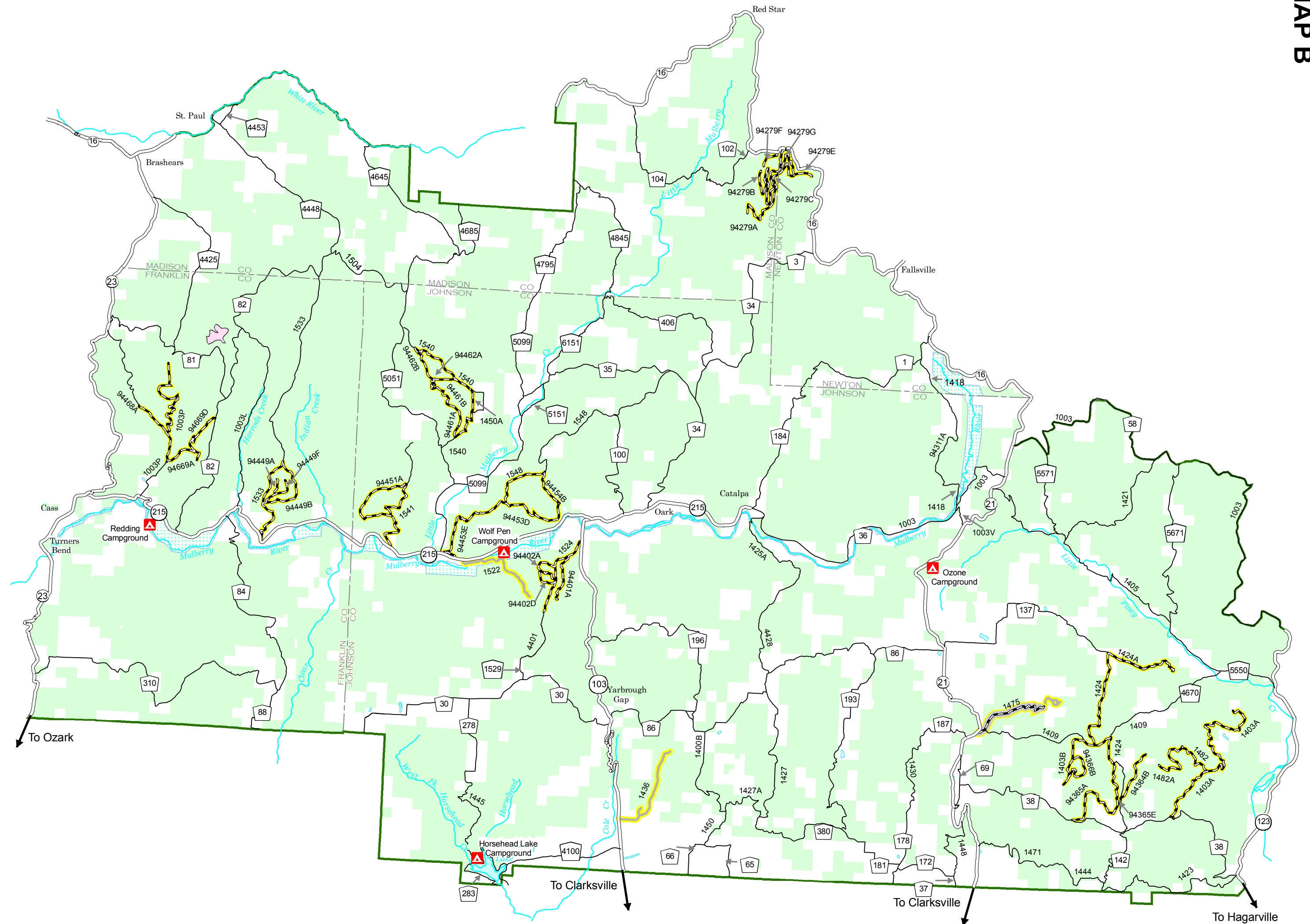
- National Forest Boundary
 - County Boundary
 - State Highway
 - OHV Access Roads
(Open to Highway Legal Vehicles)
 - Streams
 - Ozark National Forest
 - Special Interest Areas
 - Wild and Scenic River Corridor
 - Forest Service Campgrounds
- ROUTE MARKERS**
- Interstate
 - U.S.
 - State
 - County
 - 1120 National Forest



INDEX TO TOPOGRAPHIC MAPS

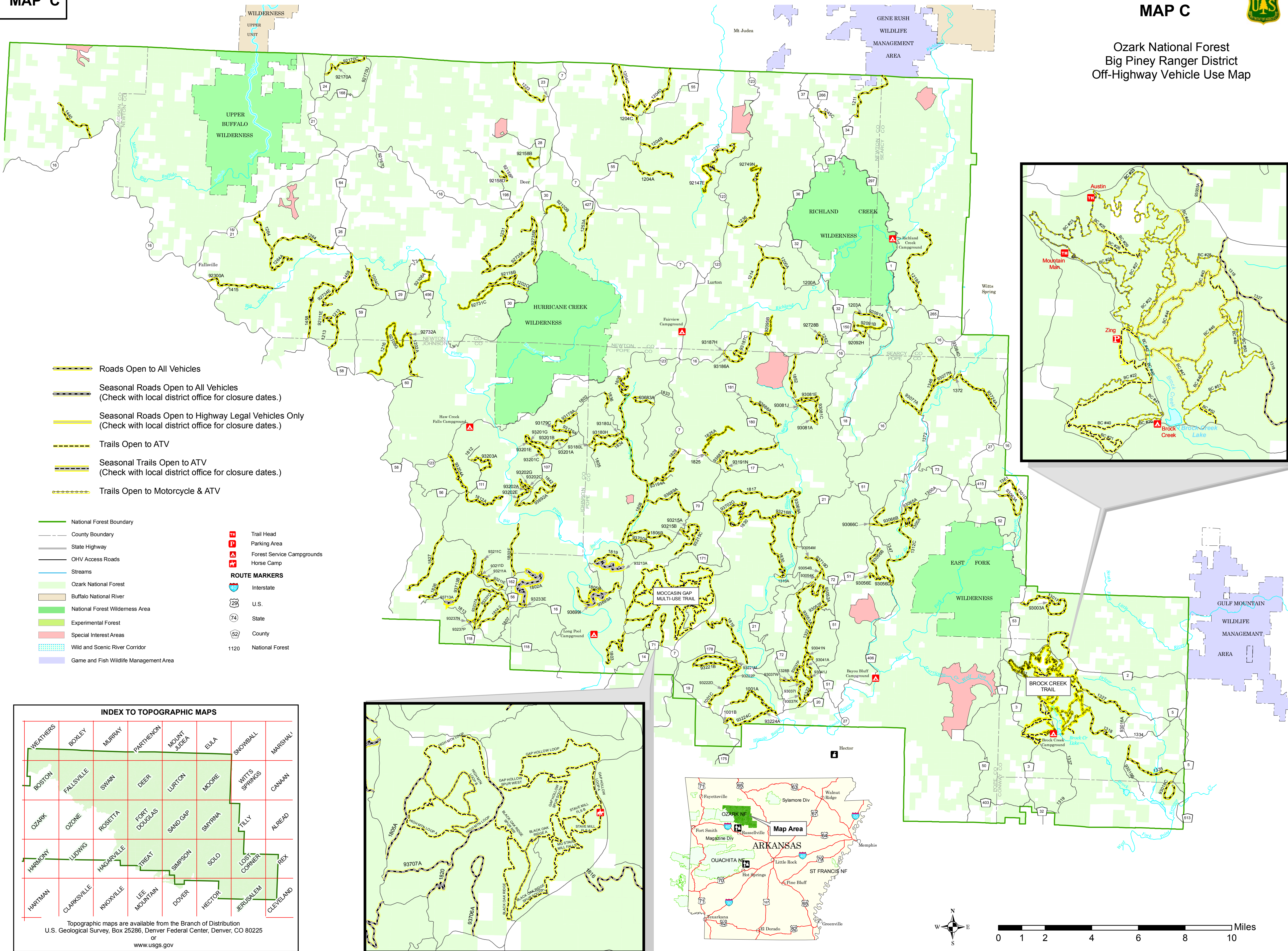


Topographic maps are available from the Branch of Distribution
U.S. Geological Survey, Box 25286, Denver Federal Center, Denver, CO 80225
or
www.usgs.gov



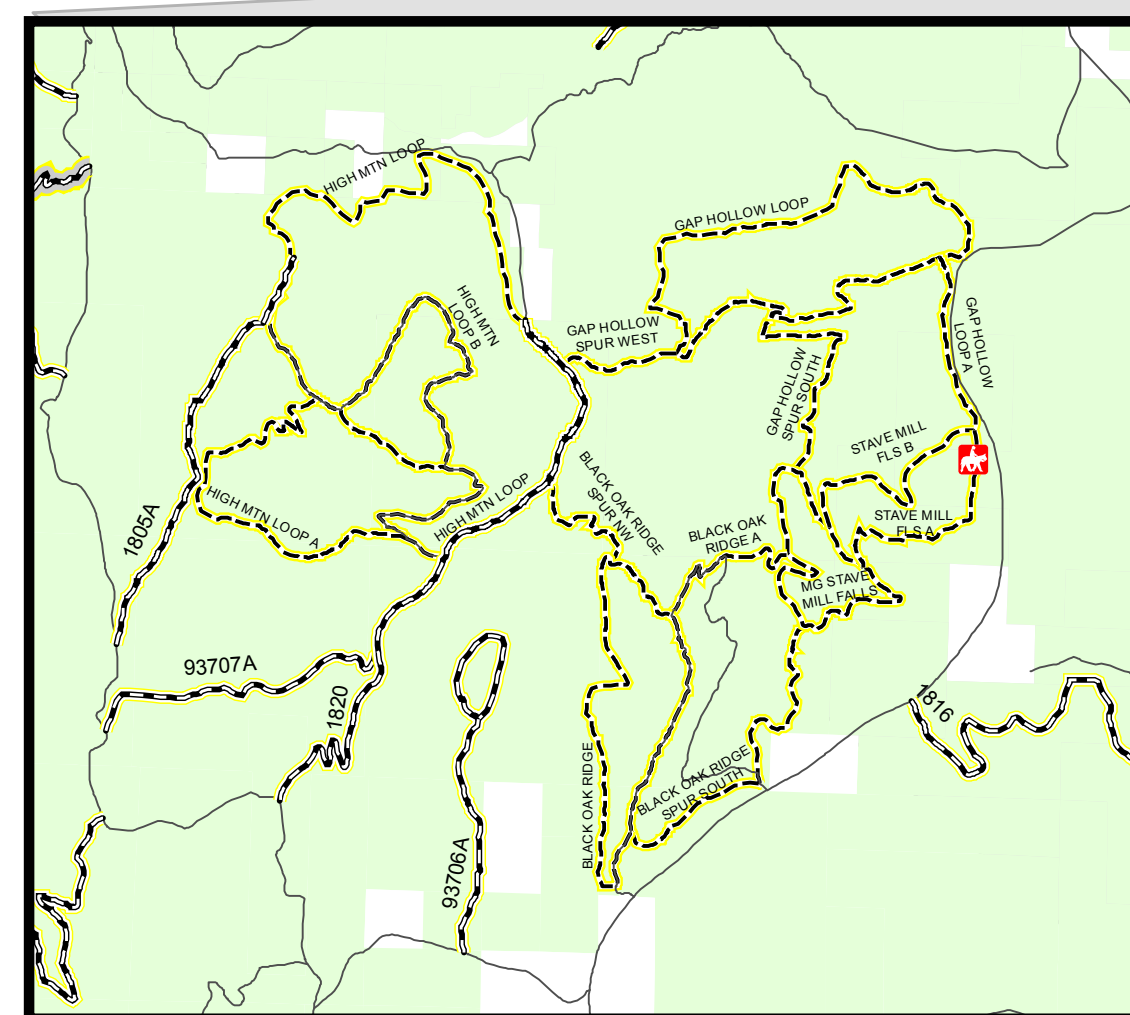
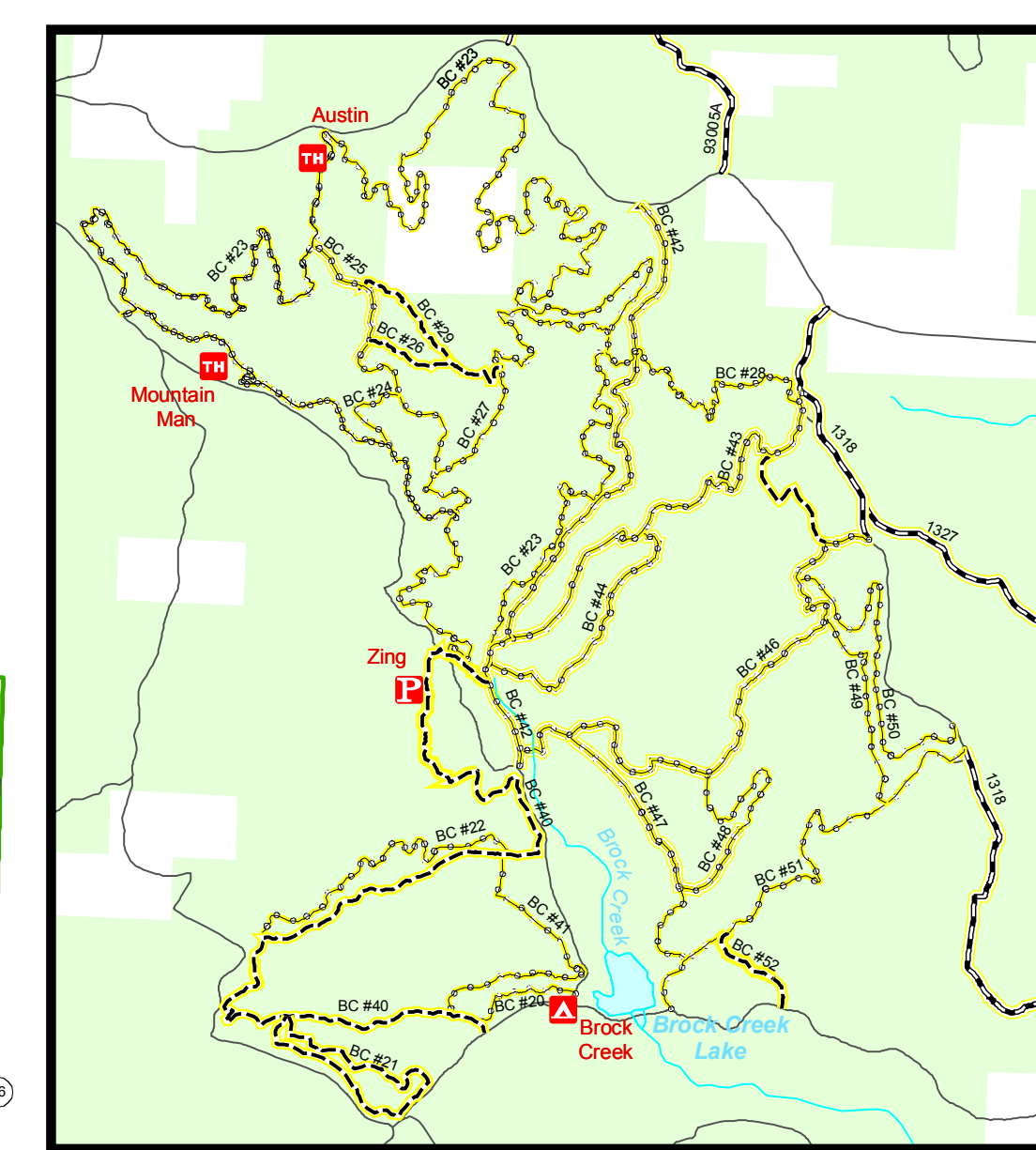


Ozark National Forest
Big Piney Ranger District
Off-Highway Vehicle Use Map



- Roads Open to All Vehicles
- Seasonal Roads Open to All Vehicles (Check with local district office for closure dates.)
- Seasonal Roads Open to Highway Legal Vehicles Only (Check with local district office for closure dates.)
- Trails Open to ATV
- Seasonal Trails Open to ATV (Check with local district office for closure dates.)
- Trails Open to Motorcycle & ATV

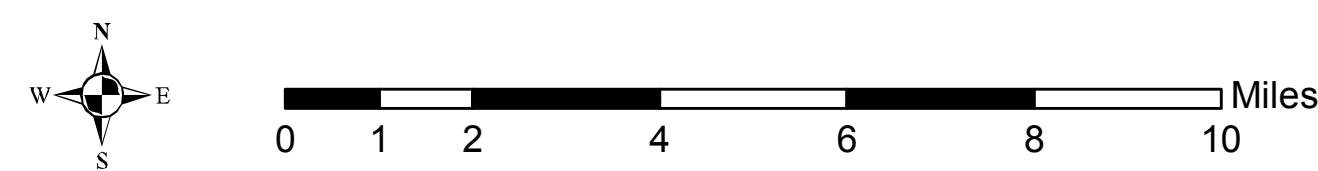
- National Forest Boundary
 - County Boundary
 - State Highway
 - OHV Access Roads
 - Streams
 - Ozark National Forest
 - Buffalo National River
 - National Forest Wilderness Area
 - Experimental Forest
 - Special Interest Areas
 - Wild and Scenic River Corridor
 - Game and Fish Wildlife Management Area
 - Trail Head
 - Parking Area
 - Forest Service Campgrounds
 - Horse Camp
- ROUTE MARKERS**
- Interstate
 - U.S.
 - State
 - County
 - 1120 National Forest

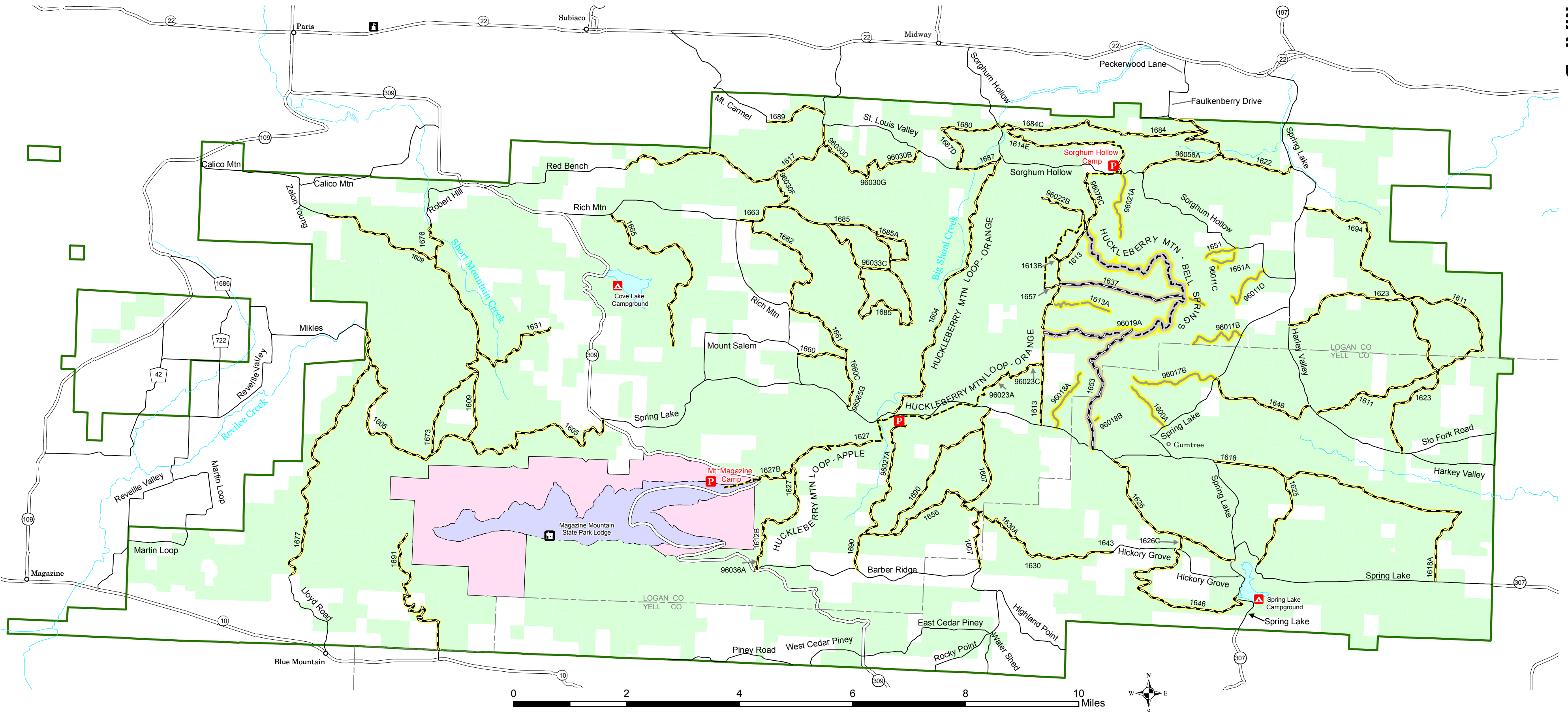


INDEX TO TOPOGRAPHIC MAPS

WEATHERS	BOYLEY	MURRAY	PARTHERON	MOUNT JUDEA	EULA	SNOWBALL	MARSHALL
BOSTON	FALLSVILLE	SWANN	DEER	LURTON	MOORE	WITTS SPRINGS	CANAAN
OZARK	OZONE	ROBETTA	FORT DOUGLAS	SAND GAP	SMYRNA	TILLY	ALREAD
HARMONY	LUDWIG	HAGARVILLE	TREAT	SIMPSON	SOLO	LOST CORNER	REX
HARTMAN	CLARKSVILLE	KNOWVILLE	LEE MOUNTAIN	DOVER	HECTOR	JERUSALEM	CLEVELAND

Topographic maps are available from the Branch of Distribution
U.S. Geological Survey, Box 25286, Denver Federal Center, Denver, CO 80225
or
www.usgs.gov





MAP D

Ozark National Forest Mt. Magazine Ranger District Off-Highway Vehicle Use Map



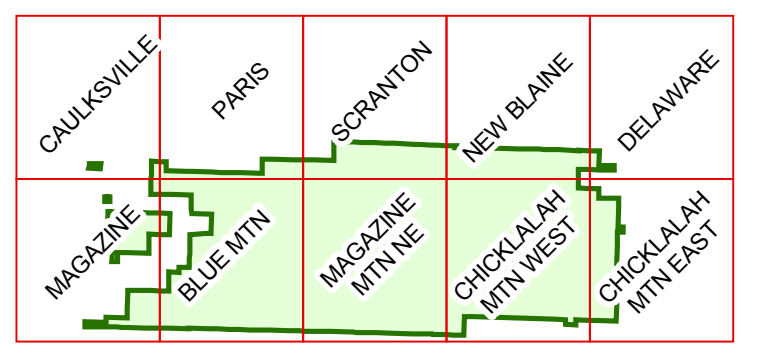
- Roads Open to All Vehicles
- Seasonal Roads Open to All Vehicles
(Check with local district office for closure dates.)
- Seasonal Roads Open to Highway Legal Vehicles Only
(Check with local district office for closure dates.)
- Trails Open to ATV
- Seasonal Trails Open to ATV
(Check with local district office for closure dates.)

- National Forest Boundary
- County Boundary
- State Highway
- OHV Access Roads
(Open to Highway Legal Vehicles)
- Streams
- Ozark National Forest
- Special Interest Areas
- State Parks
- Ranger District Headquarters
- Forest Service Campgrounds
- Parking Area

- ROUTE MARKERS**
- Interstate
 - U.S.
 - State
 - County
 - National Forest



INDEX TO TOPOGRAPHIC MAPS



Topographic maps are available from the Branch of Distribution
U.S. Geological Survey, Box 25286, Denver Federal Center, Denver, CO 80225
or
www.usgs.gov

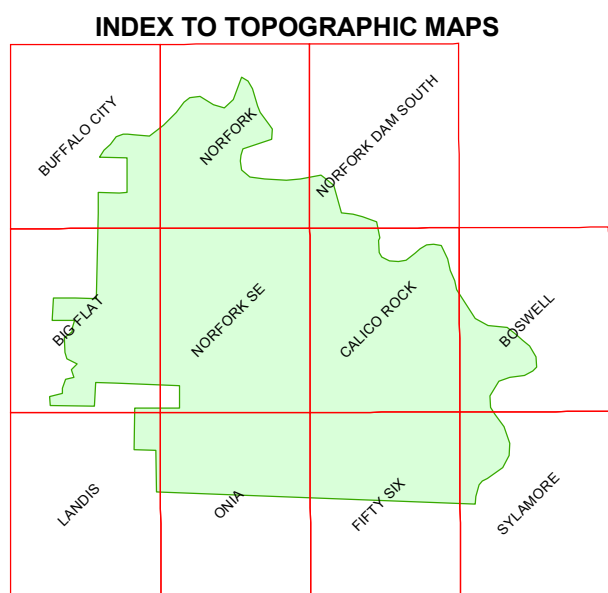


MAP E

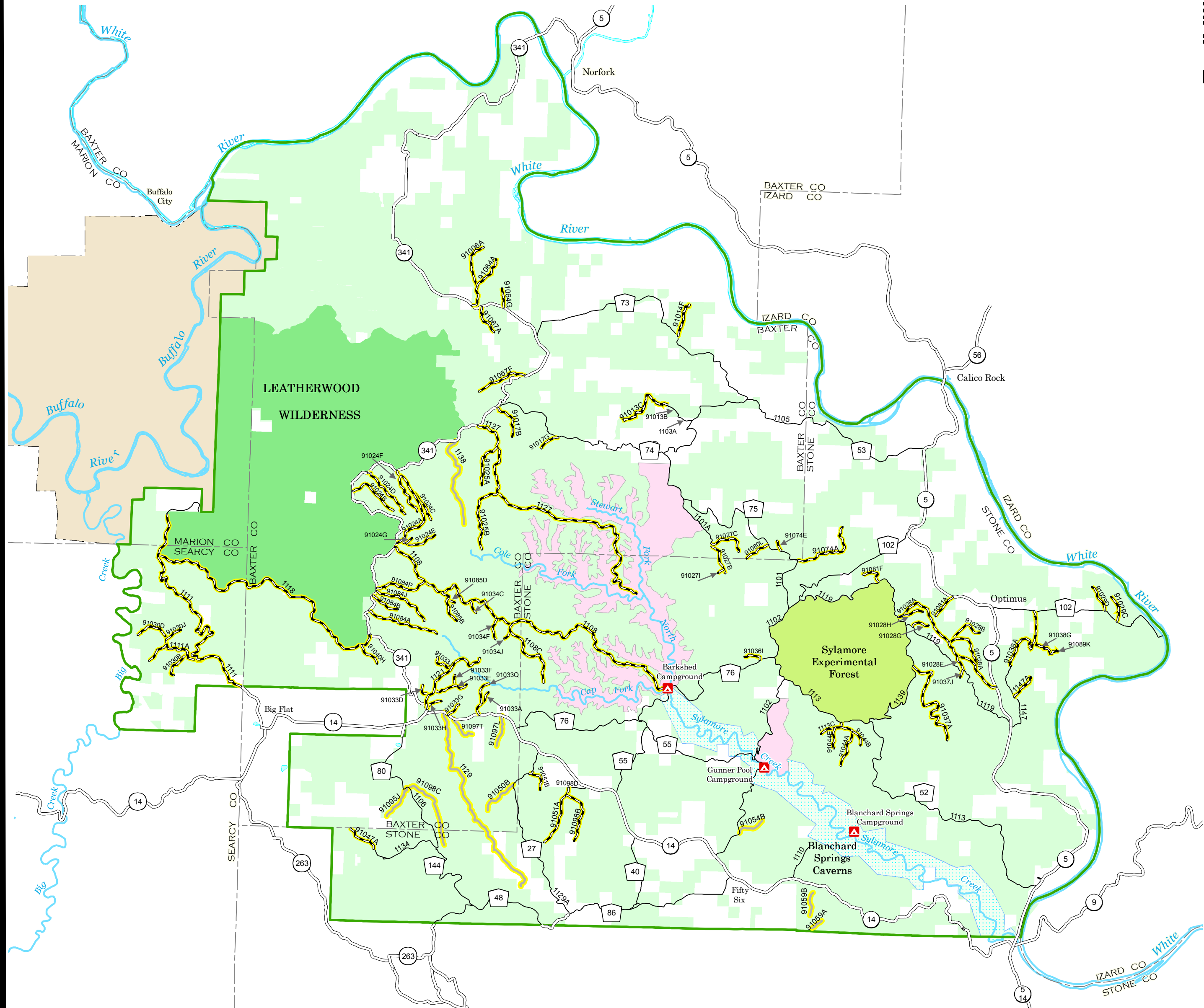
Ozark National Forest Sylamore Ranger District Off Highway Vehicle Use Map

Roads Open to All Vehicles
 Seasonal Roads Open to Highway Legal Vehicles Only
 (Check with local district office for closure dates.)

- National Forest Boundary
 - County Boundary
 - State Highway
 - OHV Access Roads (Open to Highway Legal Vehicles)
 - Streams
 - Ozark National Forest
 - Buffalo National River
 - National Forest Wilderness Area
 - Experimental Forest
 - Special Interest Areas
 - Wild and Scenic River Corridor
- Forest Service Campgrounds
- ROUTE MARKERS**
- Interstate
 - U.S.
 - State
 - County
 - 1120 National Forest



Topographic maps are available from the Branch of Distribution
 U.S. Geological Survey, Box 25286, Denver Federal Center, Denver, CO 80225
 or
www.usgs.gov



RIDE 4 KEEPS



- 1 Keep It Safe
- 2 Keep It Legal
- 3 Keep On Trails
- 4 Keep the Privilege

Forest Service
www.fs.fed.us/r8/ride4keeps/

Keep It Safe

- Wear proper safety gear.
- Maintain a safe speed.
- Stay alert. Expect the unexpected.
- No passengers on single-rider vehicles.

Keep It Legal

- Know where you can ride. Keep a current map.
- Know what vehicles are allowed and what equipment is required.
- Verify what trails are open and when.
- Don't mix alcohol and drugs with riding.

Keep On Trails

- Travel only on routes designated for your use.
- Get maps of designated routes from the Forest Service.
- Resist the urge. Mudbogging is prohibited.
- Obey signs and temporary postings.

Keep the Privilege

- Respect the environment. Tread Lightly!
- Be courteous to other trail users.
- Join a club and support OHV trails and projects.
- Encourage others to "Ride 4 Keeps".

Ozark National Forest Administrative Offices

Forest Supervisor's Office
 605 West Main Street
 Russellville, AR 72801
 Telephone: 501-964-7200
aokforests.com

Big Piney Ranger District
Hector Unit
 12000 SR 27
 Hector, AR 72843
 Telephone: 479-284-3150

Jasper Unit
 PO Box 427, Hwy 7 North
 Jasper, AR 72641
 Telephone: 870-446-5122

Boston Mountain Ranger District
 1803 N 18th St
 Ozark, AR 72949
 Telephone: 479-667-2191

Mt. Magazine Ranger District
 PO Box 511
 3001 East Walnut Street
 Paris, AR 72855
 Telephone: 479-963-3076

Pleasant Hill Ranger District
 PO Box 190
 2591 Hwy 21 North
 Clarksville, AR 72830
 Telephone: 479-754-2864

Sylamore Ranger District
 1001 E Main
 Mountain View, AR 72560
 Telephone: 870-269-3228

Other Important Numbers
Arkansas Game and Fish Commission
 Telephone: 1-800-364-4263
www.agfc.state.ar.us

Arkansas State Highway and Transportation Department
 Telephone: 501-569-2000
www.ahtd.state.ar.us



The U.S. Department of Agriculture (USDA) prohibits discrimination in all its programs and activities on the basis of race, color, national origin, age, disability, and where applicable, sex, marital status, familial status, parental status, religion, sexual orientation, genetic information, political beliefs, reprisal, or because all or a part of an individual's income is derived from any public assistance program. (Not all prohibited bases apply to all programs.) Persons with disabilities who require alternative means for communication of program information (Braille, large print, audiotape, etc.) should contact USDA's TARGET Center at (202) 720-2600 (voice and TDD). To file a complaint of discrimination write to USDA, Director, Office of Civil Rights, 1400 Independence Avenue, S.W., Washington, D.C. 20250-9410 or call (800) 795-3272 (voice) or (202) 720-6382 (TDD). USDA is an equal opportunity provider and employer.

Types of vehicles covered by this forest policy

Off-highway Vehicle (OHV)

An OHV is a motorized vehicle intended only for use off paved roads. Vehicles do not generally meet federal equipment and emissions standards, but do have to comply with special noise standards. Term often used to include motorcycles, three- and four-wheeled all-terrain vehicles (ATVs), four-wheel drives, utility vehicles and dune buggies. OHV is synonymous with ORV.

Off-road Vehicle (ORV)

An ORV is any motorized vehicle designed for or capable of cross-country travel on or immediately over land, water, sand, snow, ice, marsh, swampland, or other natural terrain; excluding registered motorboats or emergency vehicles used during emergency situations.

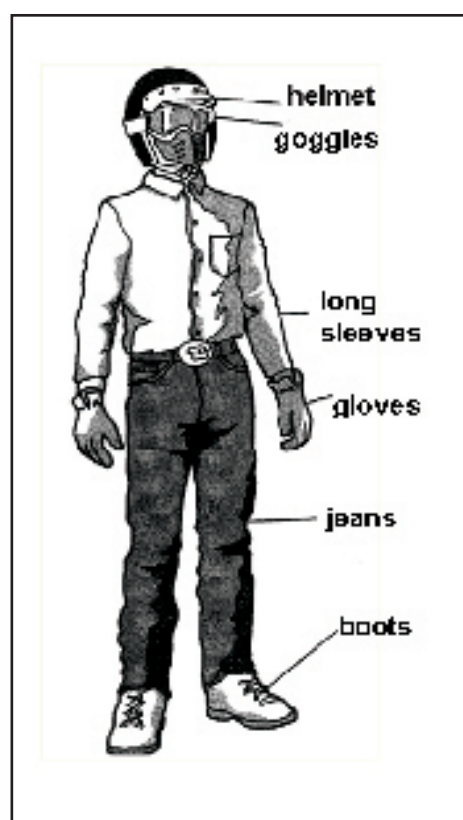
All-terrain Vehicle (ATV)

An ATV is any motorized, off-highway vehicle 50 inches or less in width, having a dry weight of 600 pounds or less that travels on three or more low pressure tires with a seat designed to be straddled by the operator. A low pressure tire means a pneumatic tire 6 inches or more in width designed for use on a wheel rim diameter of 12 inches or less. The tires utilize an operating pressure of 10 pounds per square inch or less as recommended by the vehicle manufacturer. The term "all-terrain vehicle" does not include any golf cart, riding lawn mower, or lawn/garden tractor.

Safety first

Safety is a primary concern—especially when off-highway vehicles travel high-speed roads and share the travel way with large trucks and fast moving traffic. Numerous OHV accidents including collisions with vehicles and/or natural obstructions, such as trees or hillsides, are being reported at an alarming rate.

You are encouraged to use the following equipment every time you use your OHV: gloves and a helmet, eye protection, rain gear or cold weather equipment, maps, first aid kit, flashlight and a fire extinguisher. It is also a good idea to take enough drinking water and snacks to last in case you have to walk out after a breakdown. Remember, you can ride an OHV much farther in one hour than you can walk in a day.



Tools You May Need

Even if you're only planning a short ride, bring along some tools, such as a small tire pump, patch kit and tow strap. A simple tool may be all you need to keep from walking.

Road Violation Report

If you witness a violation, record information on this form and submit to a Forest Service official.

Witness Information (Optional)

Your Name: _____
 Address: _____
 Phone: _____

Time: _____ Date: _____
 Vehicle make: _____ Model: _____
 Vehicle color: _____
 License #: _____ State: _____
 County: _____ Road: _____
 Location: _____
 Name of person involved: _____
 Number of persons involved: _____
 Description of violation: _____

Submit to: Ozark National Forest
 Law Enforcement, 605 W. Main Street
 Russellville, AR 72801

I want to help...

The ability of the Ozark National Forest to designate new trails and maintain existing routes can be greatly enhanced with your help. If this opportunity interests you, please respond to the Ozark National Forest, Recreation Staff Officer, 605 W. Main Street, Russellville, AR 72801.

- I have a recommendation for a new OHV route on the Ozark National Forest.
- I am a member of a group that would like to learn more about volunteering to build and maintain OHV routes.

Additional Comments: