



Salt Fork

Walk-In Turkey Hunting Area

Ozark-St. Francis National Forests • Boston Mountain Ranger District

Southern National Forests

Arkansas

Revised: July 2008

Hunting Information

Hunters will find several quality walk-in turkey hunting areas within the 1.2 million acres on the Ozark-St. Francis National Forests. These areas are the result of hunters requesting opportunities to hunt on public lands managed by the US Forest Service in a place free of disturbance from motor vehicles.

The Ozark mountain region is known for magnificent scenery, rough terrain, and good turkey hunting opportunities. The notoriety of the area has brought on a dramatic increase in the number of hunters over the past 20 years, making it challenging for serious turkey hunters to find an area to hunt away from traffic and noise.

All maintained roads leading into each area are closed to motor vehicle traffic from early spring to late summer. In some areas, road segments and primitive forest roads are permanently closed and re-vegetated to improve turkey habitat and to control erosion. Signs are posted along the boundaries of each area to inform the public about motor vehicle restrictions. Restricting vehicle traffic protects turkeys during the critical nesting and brood rearing seasons. Other habitat improvements include prescribed burning and establishing water holes and food plots for the turkeys. These same projects will improve the habitat for more than 100 species of wildlife.

The Ozark-St. Francis National Forests Walk-In Turkey Hunting Areas are a joint partnership between the US Forest Service, Arkansas Game and Fish Commission, and the Arkansas Wild Turkey Federation as part of the Making Tracks program. It began in 1989 as a way to improve wild turkey habitat on national forest lands. It is also designed to provide a surplus of wild turkeys for stocking and introducing into suitable areas throughout the nation.

State Regulations

Hunting is permitted anywhere on the Ozark-St. Francis National Forests except within developed recreation sites, areas closed by the Arkansas Game and Fish Commission or otherwise posted areas. All state hunting and fishing regulations, fees, and seasons apply on national forest land. For more information, contact the Arkansas Game and Fish Commission at www.agfc.com.

Salt Fork Walk In Turkey Hunting Area is 8,941 acres in size and is located north and east of White Rock Mountain, north of Forest Service (FS) Road 1003, west of FS Road 1506, south of FS Road 1007 on the Boston Mountain Ranger District of the Ozark-St. Francis National Forests.

Pursuant to 36 C.F.R. 261.54 and 261.56, forest roads are closed to motor vehicle traffic from April 1 to June 15 each year, except FS road 1510 is open year-round. Violation of the prohibition is punishable by a fine of not more than \$500 or imprisonment for not more than 6 months, or both.

Pursuant to 36 C.F.R. 261.50(e) persons with a permit from the US Forest Service specifically authorizing an otherwise prohibited act are exempt from the order, along with federal, state, or local law enforcement, firefighting or rescue officers acting in an official capacity.

For a detailed topographic map of this area, please send \$6.00 per map, requesting the Bidville USGS Quad map, plus a \$3.50 handling charge to: Boston Mountain Ranger District, P.O. Box 76, Ozark, AR 72949 (479) 667-2191. For more information contact the Boston Mountain Ranger District.

The U.S. Department of Agriculture (USDA) prohibits discrimination in all its programs and activities on the basis of race, color, national origin, age, disability, and where applicable, sex, marital status, familial status, parental status, religion, sexual orientation, genetic information, political beliefs, reprisal, or because all or a part of an individual's income is derived from any public assistance program. (Not all prohibited bases apply to all programs.) Persons with disabilities who require alternative means for communication of program information (Braille, large print, audiotape, etc.) should contact USDA's TARGET Center at (202) 720-2600 (voice and TDD). To file a complaint of discrimination write to USDA, Director, Office of Civil Rights, 1400 Independence Avenue, S.W., Washington, D.C. 20250-9410 or call (800) 795-3272 (voice) or (202) 720-6382 (TDD). USDA is an equal opportunity provider and employer.

Ozark-St. Francis National Forests www.aokforests.com

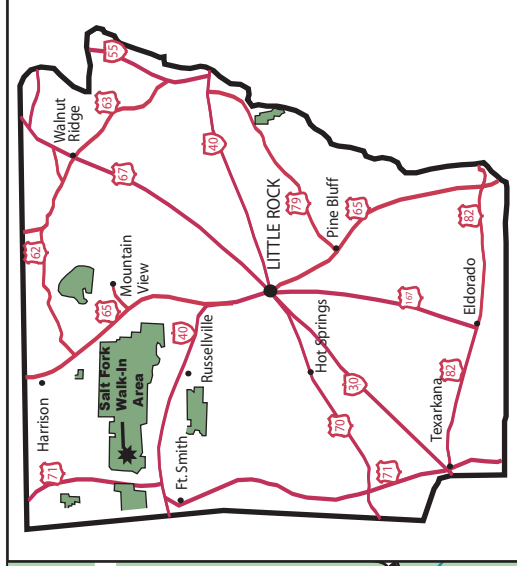
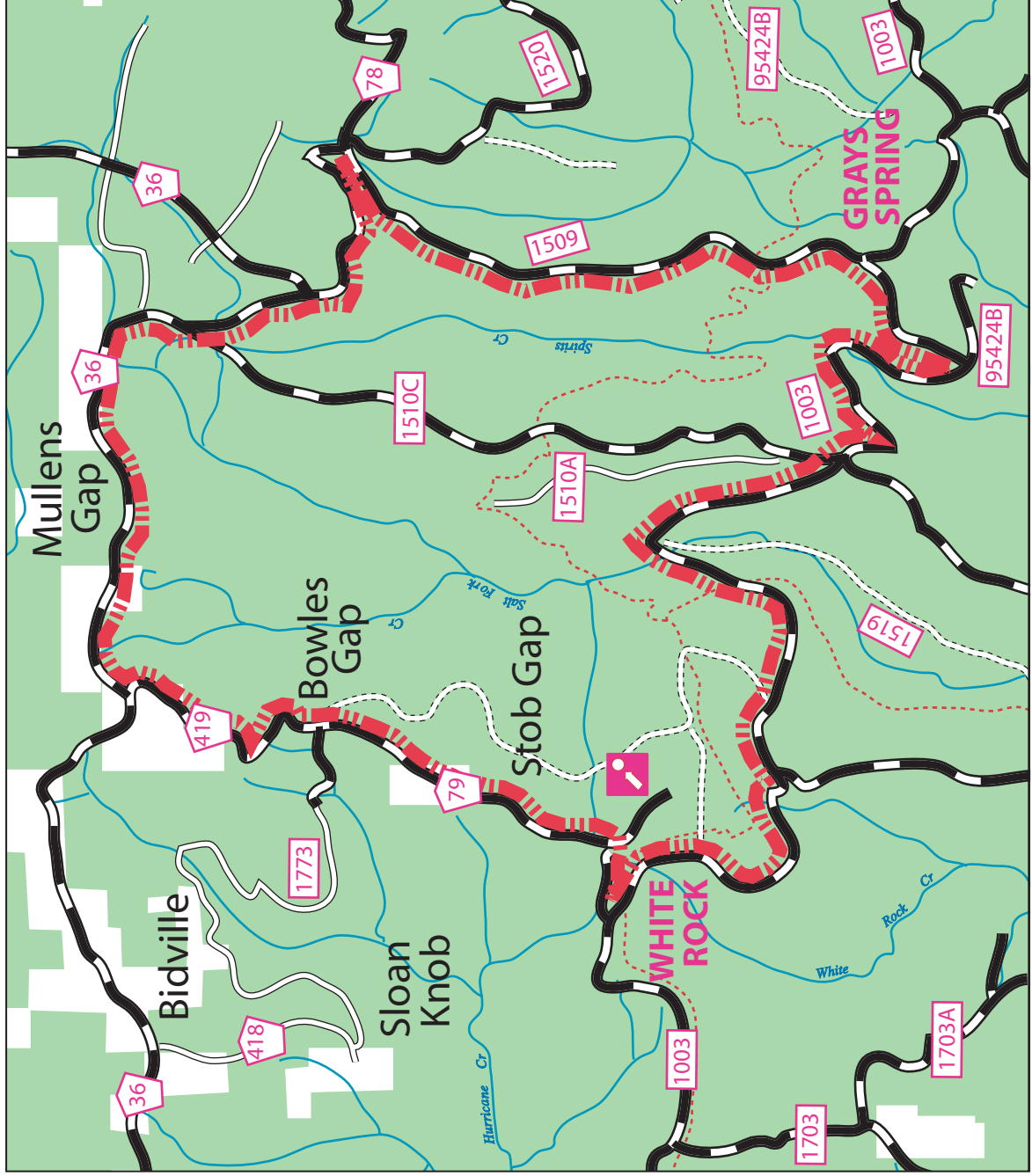
605 W. Main Street, Russellville, AR 72801 479-964-7200





Salt Fork Walk-In Turkey Hunting Area

Ozark-St. Francis National Forests · Boston Mountain Ranger District · Arkansas



	Hunting Boundary
	Light Duty Road, Paved
	Light Duty Road, Gravel
	Unimproved Road
	Light Duty Road, Dirt
	Ozark Highlands Hiking Trail
	National Forest Road Marker
	County Road Marker
	Point of Interest

Approximate Scale
1.5" = 1 mile