

Making Sense of Sediment Evaluations

Regional Sediment Evaluation Team's (RSET) Process

&

Northwest Regional Sediment Evaluation Framework (SEF)



US Army Corps
of Engineers ®



Background

- **Process began in 2002 to update the Lower Columbia Dredged Material Evaluation Framework (DMEF) (1998)**
- **DMEF built on a strong foundation from PSDDA**
- **Hood River meeting, agencies supported regional manual/process (Sept. 2002)**
- **Established as a Corps regional budget priority 2004**
 - **Expended \$750,000 (in-house labor and contracts, additional \$125,000 for coordinator)**
 - **Other Agencies contributed in-kind services**
- **Public Notice September 2005 (Draft SEF)**
- **Comments incorporated, Interim Final SEF (Oct. 2006)**

Seattle District's Internet Web Site

<http://www.nws.usace.army.mil>

Click on RSET

OR

**Call Stephanie Stirling
(206) 764-6945**



Interim Final

September 2006

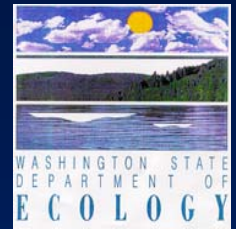


Washington State Department of
Natural Resources



US Army Corps
of Engineers®





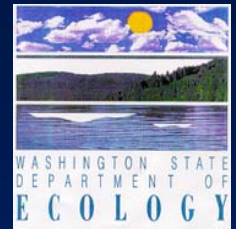
Regional Sediment Evaluation Team (RSET)

- The RSET, a multi-agency group, formed under the auspices of the Regional Dredging Team (RDT) to revise the existing regional DMEF for use by all NW Corps Districts, EPA Region 10, NMFS, USFWS, and other federal and state agencies that require sediment quality evaluation procedures.



US Army Corps
of Engineers ®





Thanks to all Participants in RSET and the NW SEF

- Place holder for sub committee chairs and participants, and names and logos of consultants to RSET



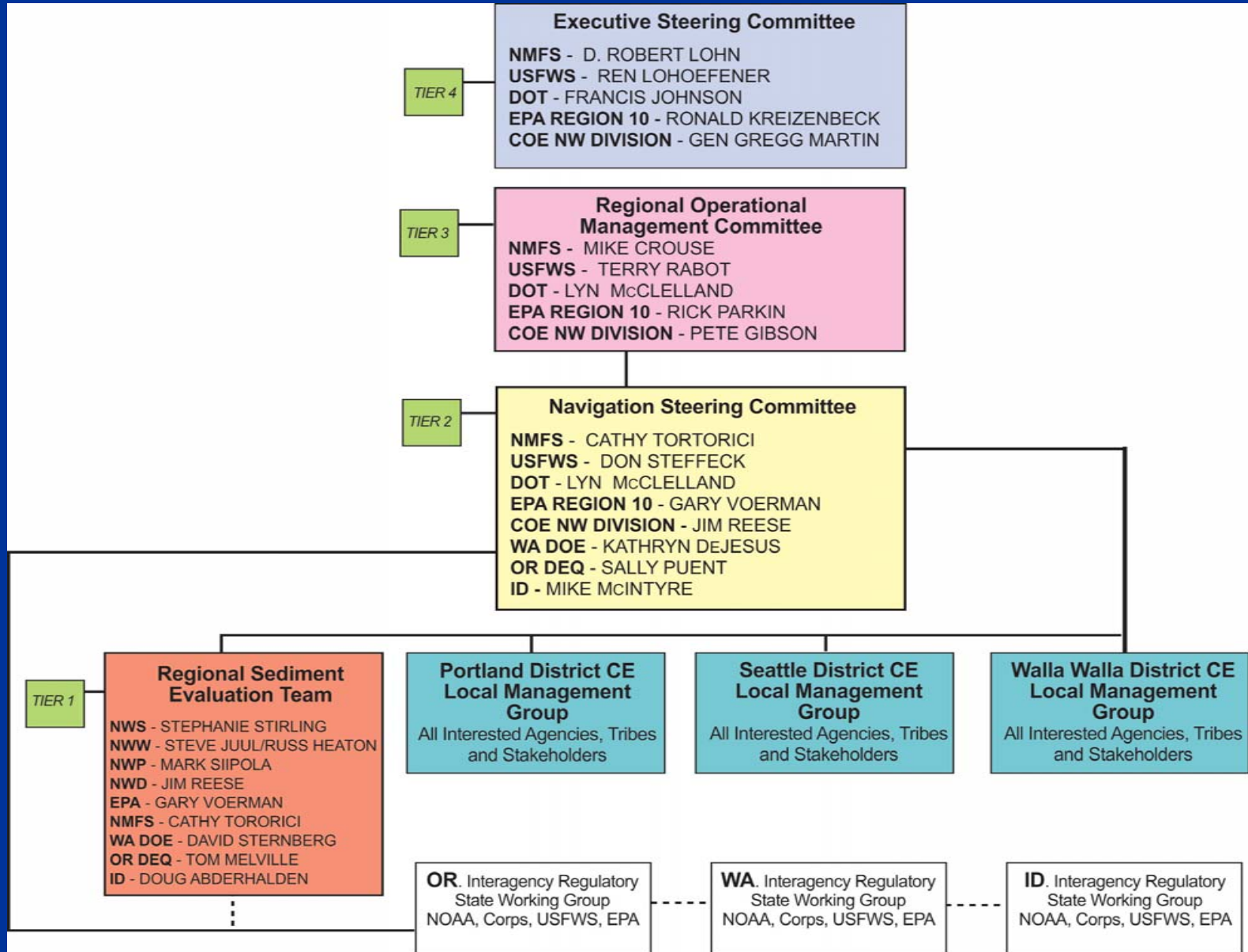
US Army Corps
of Engineers ®



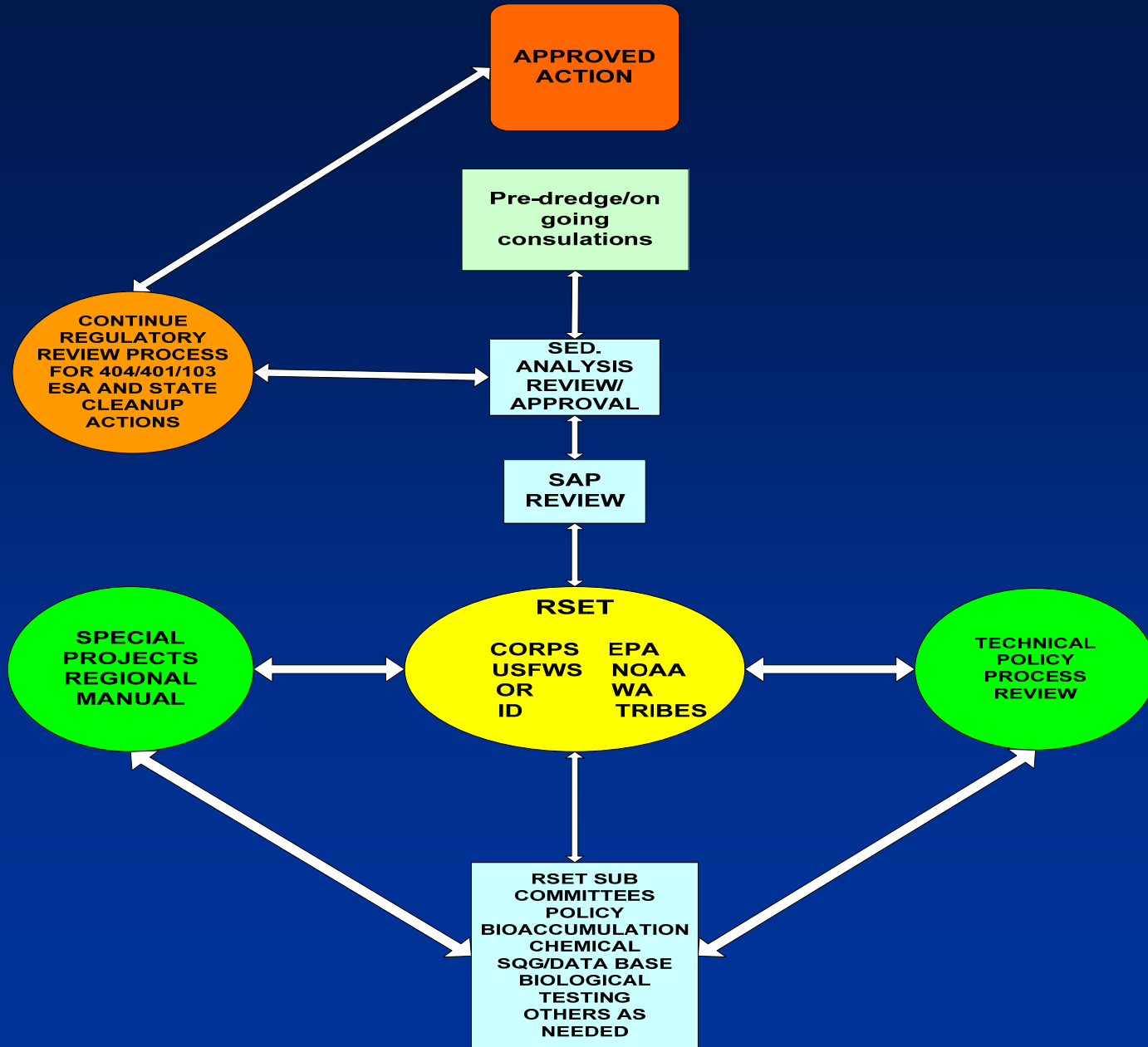
RSET Responsibilities

- **Revise and develop sediment evaluation procedures for the region**
- **Issue as NW Regional Sediment Evaluation Framework (SEF)**
- **Describe process and policy for regulatory issues and how sediment evaluation are incorporated**
- **Keeper and revisers of SEF**
- **Provide monthly, quarterly, and annual meetings for review and interpretation of test results, and process improvement**
- **Develop and support regional sediment database**
- **Coordinate with RDT as issues occur with any of the above bullets**

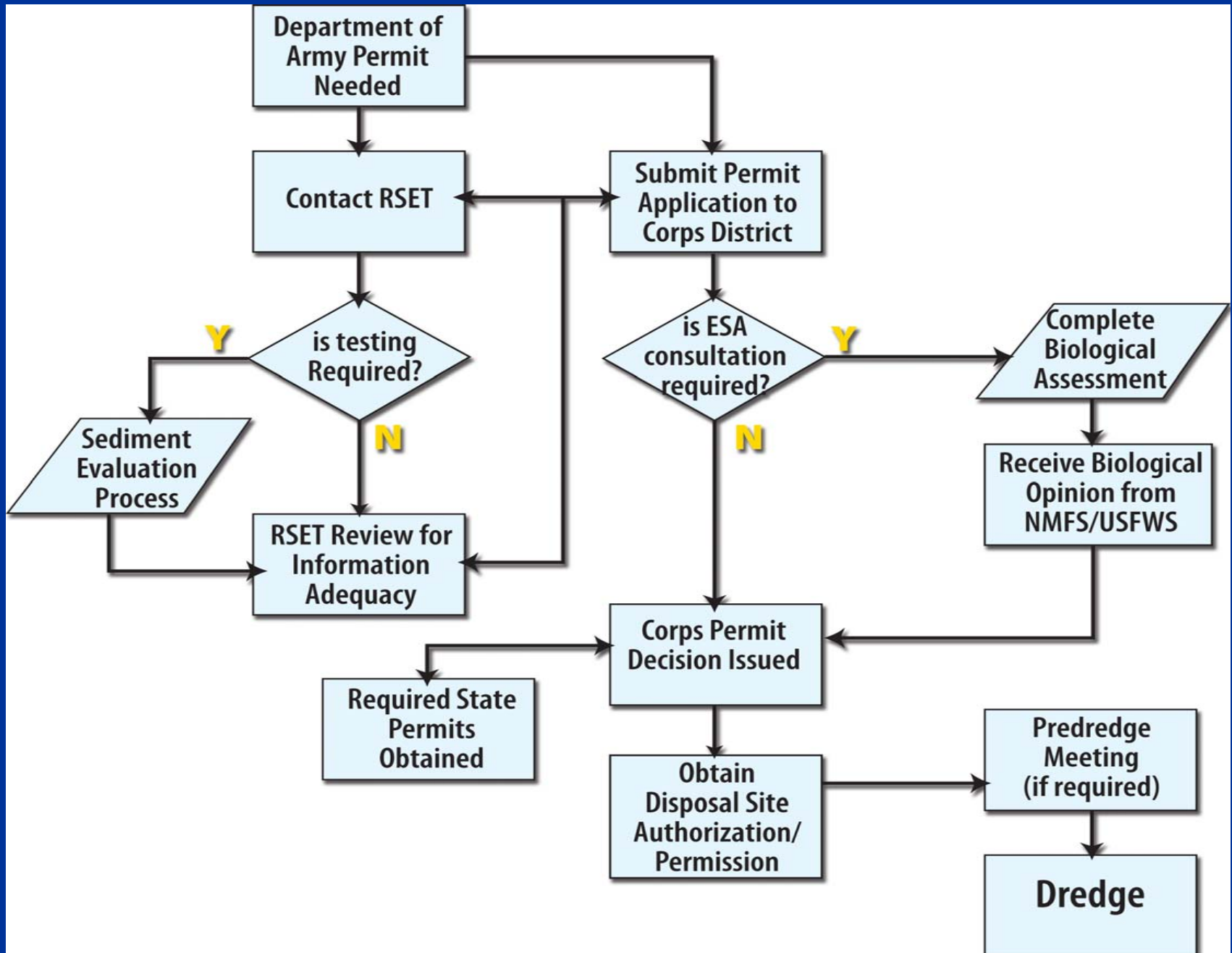
REGIONAL DREDGING TEAM STRUCTURE AND DESIGNATED MEMBERS

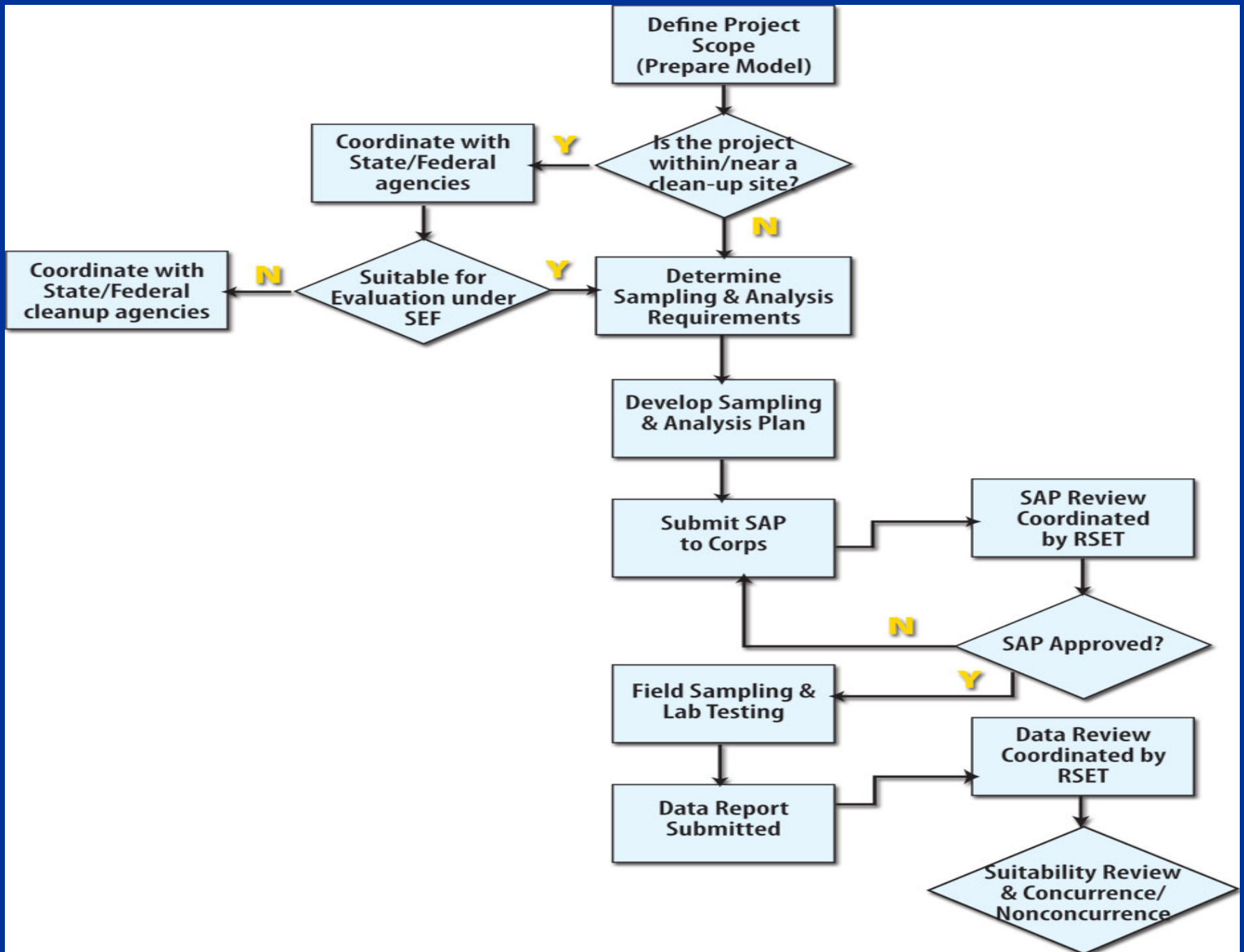


RSET Activities



Standard Regulatory Process





SEF Development

- **RSET relies on technical and policy subcommittees (which are open) to make recommendations for SEF revision.**
 - **Technical/Scientific issues**
 - **Policy issues**
 - **Long-term role**
 - **Voluntary commitment by agencies and consultants**
- **Plenary Sessions which subcommittees report out to the region**
 - **6 Sessions over 4 years**
 - **2 Public Notices**
 - **32 White Papers**

SEF Philosophy

- **Consistent with national manuals**
- **Tiered testing approach to evaluating sediments**
- **Comprehensive sampling and testing methods to adequately characterize sediment**
- **Site-specific flexibility based on geographic and watershed issues**
- **Consistent evaluation procedures to serve multiple agency objectives**
- **A mechanism to update the manual**

How will the SEF Help?

- Regulatory - provide consistent and timely guidance for addressing sediment and dredged material characterization
- Public - sampling, testing, and analysis strategies that can reduce uncertainties about the actions a regulator may require.
- Monthly Forum to discuss project issues
- Reducing uncertainties can help with project scheduling, financial planning, and project management decisions.

Portland District Beta Test 2006

- **Conducted as trial of draft 2005 SEF**
- **Similar to DMMP in Washington**
- **Monthly meeting to review projects**
- **Commitment to review timeliness**
- **Project tracking**
- **Involvement of NMFS and FWS**
- **Conflict resolution mechanism**
- **All participating agencies endorsed beta test and recognize the need to continue the process**

What have we accomplished?

- **Established communication and coordination among regulatory agencies on sediment issues (beta test)**
- **Established technical subcommittees that prepared set of RSET Technical Issue and White Papers, for SEF**
- **Updated freshwater and marine sediment interpretive guidelines and screening levels**
- **Provided disposal alternative options**

What have we accomplished?

(continued)

- **Defined risk-based framework, using conceptual models for both dredging and site investigation projects**
- **Addressed chemical analyte issues (PCBs, summation methods, process to add or drop analytes)**
- **Evaluation and nomination of emerging chemicals**
- **Identified regional sediment database**
- **Framework for addressing bioaccumulation under RSET**

Where Do We Go From Here?

- **Continue work on bioaccumulation framework**
- **Develop Target Tissue Levels (TTLs)**
- **Further research on freshwater bioaccumulation tests and species**
- **Evaluate use of 10-day versus longer term 28-day freshwater bioassays**
- **Full regional beta test 2007**
 - **Monthly meetings for each state**
 - **Quarterly RSET meetings**
 - **Annual review meetings**

Where Do We Go From Here? (continued)

- **Evaluate protectiveness of current suite of bioassays for ESA species**
- **Review and refine (as necessary) biological interpretative criteria**
- **Continuous review and refinement (as necessary) of sediment screening levels utilizing regional database**

What Happens in 2007?

- **Adopt RSET process**
- **Adopt Interim Final SEF**
- **Establish full regional beta test of process**
- **Establish monthly state SEF meetings, quarterly regional meetings, and annual review meetings**
- **Refine sediment assessment tools (surrogacy)**
- **Work toward combining RSET & DMMP, by FY 08**
- **Adopt SEF and issue Public Notice that SEF is final by all six agencies FY 08**
- **Continue SEF revisions with annual review process**

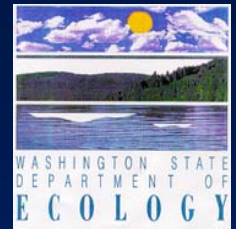
Good News...

All agencies like the process and do not want to return to existing DMEF

Bad News...

All agencies like the process, but have limited funds to support continued development in 2007





Again Thanks to all Participants in RSET and the NW SEF

- Place holder for sub committee chairs and participants, and names and logos of consultants to RSET



US Army Corps
of Engineers ®

