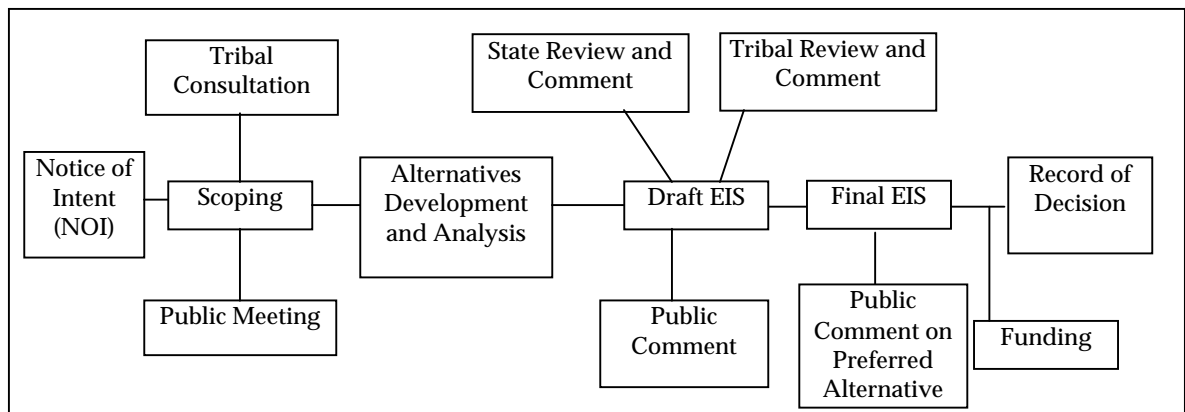


**Jackson Bison and Elk Herd Management:
Situation Assessment and Process Recommendations
*Errata List***

1. The general questions asked by interviewers are provided at the end of this list. The questions were used as a guide by the interviewers, they have been added to provide readers additional context for the findings and analysis presented in the report.
2. The U.S. Fish and Wildlife Service and the National Park Service jointly funded this project.
3. Page 24, the correct heading should be Winter Feeding of the Jackson Bison and Elk Herds
4. Page 23, ungulate fever is brucellosis, additional other diseases include tuberculosis and chronic wasting disease.
5. Page 38, the figure entitled Basic NEPA Model is revised to include 'Final EIS' and 'public comment on the preferred alternative' as shown below.



6. Page 40, insert the release of the final EIS and discussion of the preferred alternative as a step after number 13.
7. A few people inquired as to why a particular individual or group were not interviewed. In a few cases, some individuals declined to be interviewed for a variety of reasons and in a few cases we simply could not coordinate schedules to provide time for the interview. A number of people were concerned about the absence of an interview with the Rocky Mountain Elk Foundation. Both the Wyoming field representative and regional director were contacted and declined

interviews. The RMEF policy is to not comment on the public involvement process of an EIS. The field director was sent a copy of the report to keep the RMEF informed of the process. The chart on page 9 of the report presents the number of individuals by interest or agency that were interviewed.

8. A few questions were raised regarding the extent of the interviews with Native American tribes from Wyoming, Montana, and Idaho. These tribes were interviewed because they had either participated in the previous Jackson bison environmental assessment or were involved in the Yellowstone bison process.
9. Appendix B. There were a few misspellings in the interviewee list. The correct names are provided here: Christopher Papouchis; Claudio Broncho

Jackson Bison and Elk Management Situation Assessment Questions

Background

1. How would you describe the current situation of the Jackson bison and elk herds on the National Elk Refuge and surrounding public and private lands?
2. If the situation, as you described it, were to continue on its present course, what would be the most likely outcome? Is this potential outcome acceptable to you? What would a successful outcome look like to you?
3. What are the major issues related to the management of the Jackson bison and elk herds management?
4. Which of these issues are of particular concern to you? Why?
5. What people or groups are affected by or interested in Jackson bison and elk herd management? Who else would you recommend we interview?

Process

1. What kinds of processes or activities do you think would be helpful in coordinating public involvement and guidance to a management plan for the Jackson bison and elk herds? What kind of processes would be ideal for public involvement (i.e. number of people to involve, length and number of meetings, time of day and week, and locations)?
2. If a public working group, advisory team, or some similar process were established, what role do you think it should have in relation to the state and federal agencies?
3. What barriers, if any, do you see in shaping the public involvement process?
4. What kinds of public involvement processes have you participated in (such as forums, town hall meetings)? What has been your experience in public involvement processes with USFWS, GTNP, USFS, and the WGFD concerning bison and elk management?