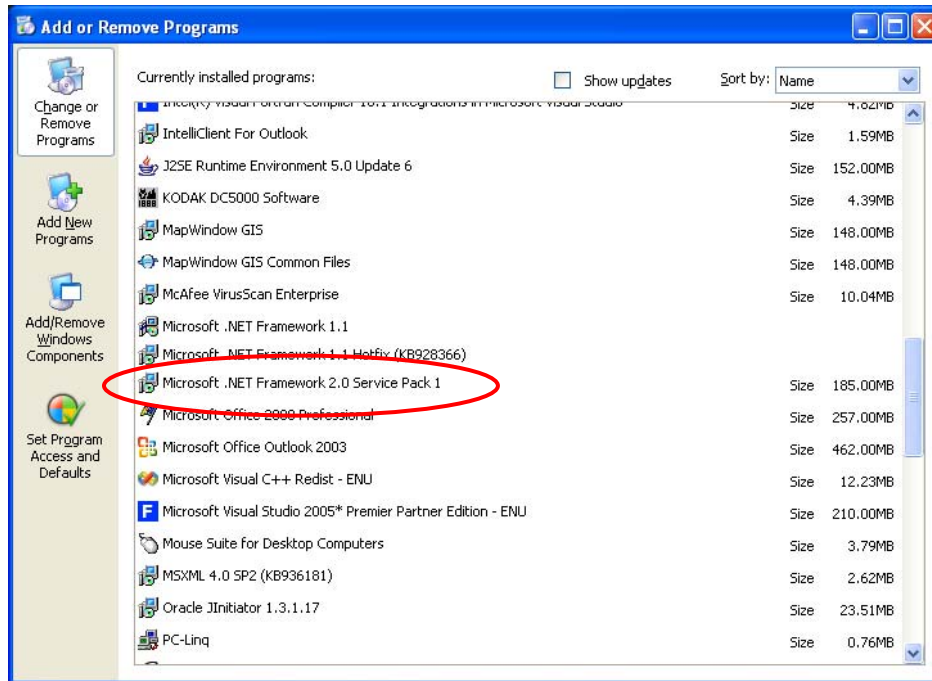


ArcGIS and ArcSWAT Installation Procedures

ArcGis 9.2 Installation instructions (April 2, 2008)

- 1) Make sure you have Microsoft .NET Framework 2.0 service pack 1 (by going in to control panel/add or remove programs)



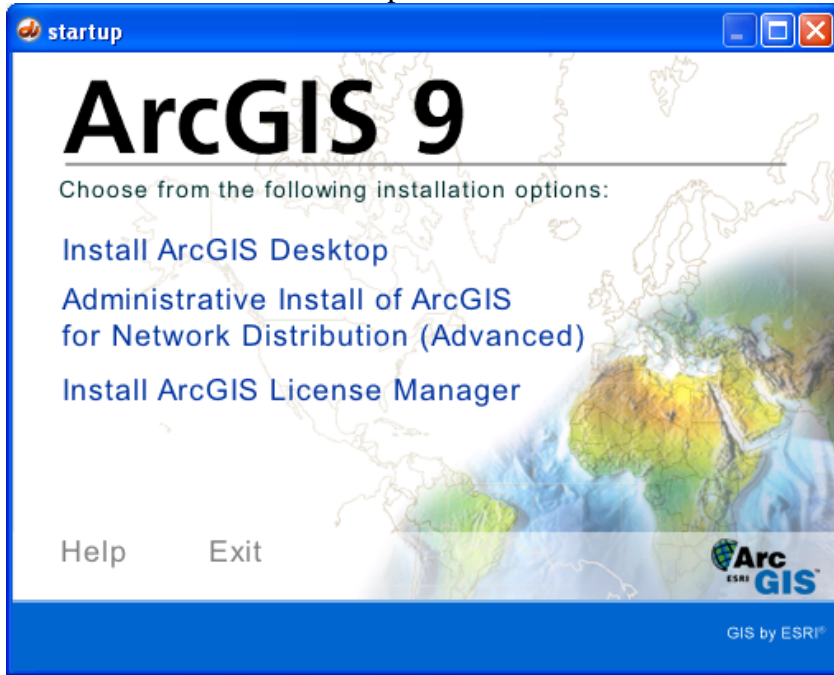
If you do not the download is located at the website below:

a. <http://www.microsoft.com/downloads/>

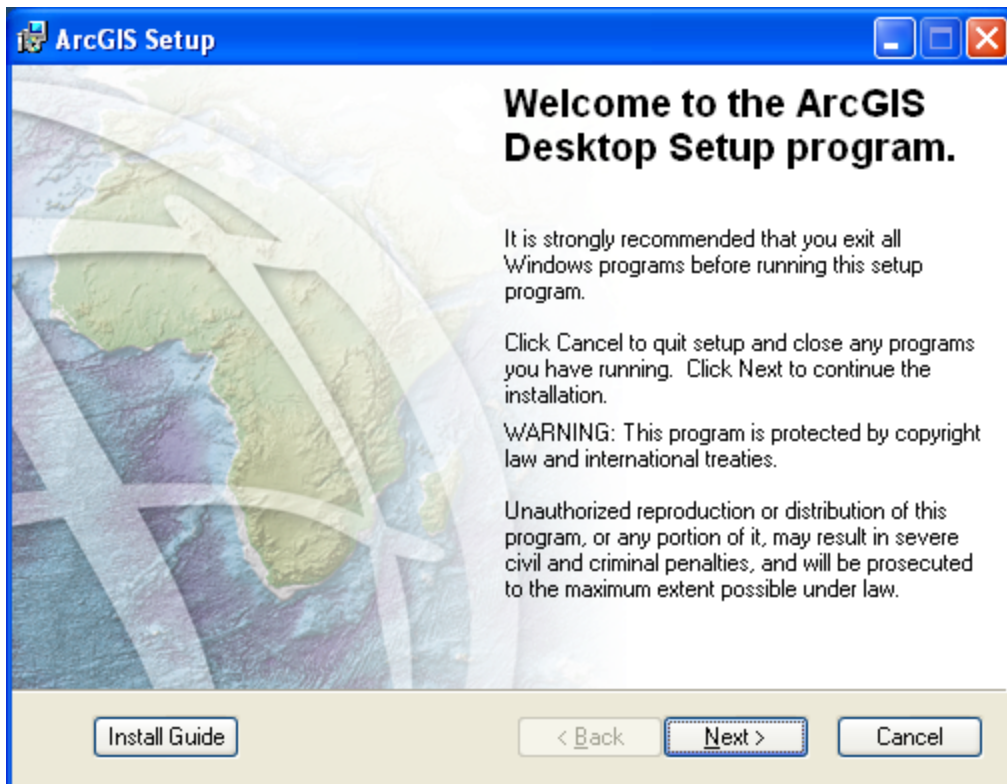
- 2) Install ArcGIS Desktop following the screen shots below:



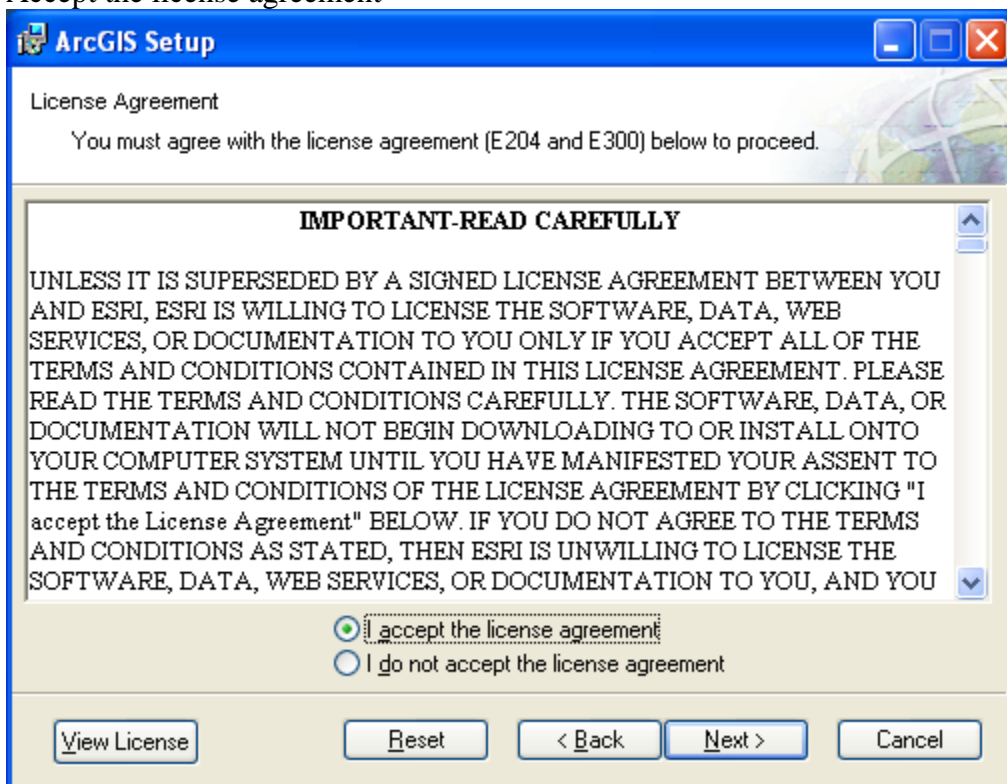
select “Install ArcGIS Desktop”



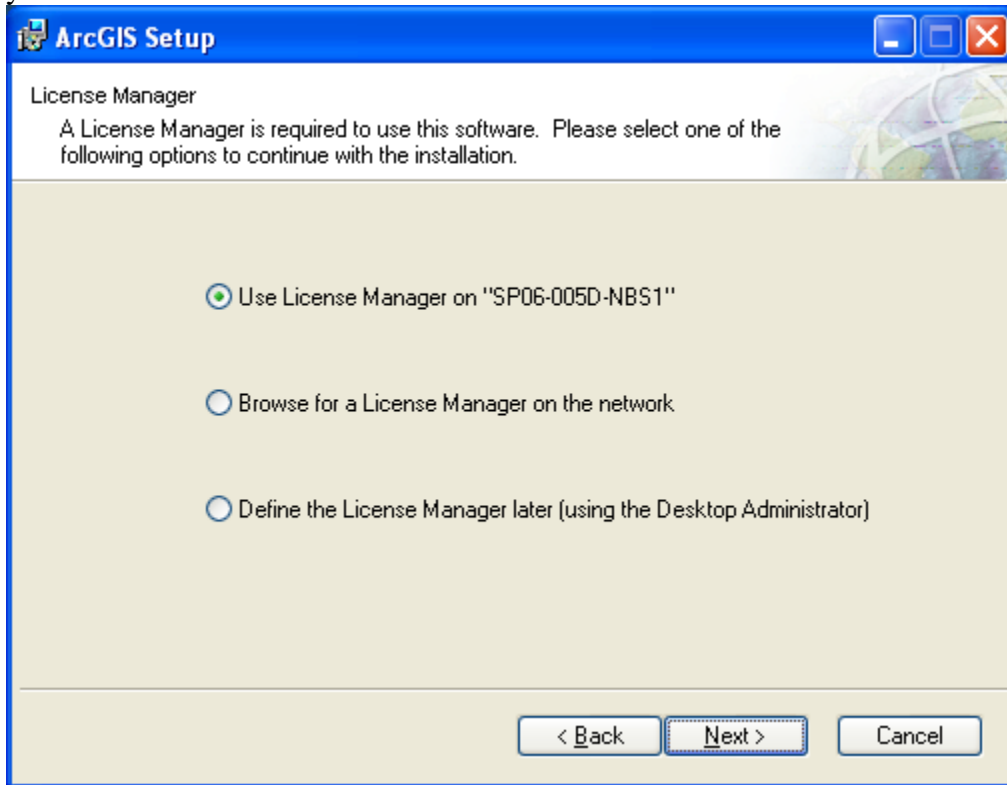
Click on “Next”



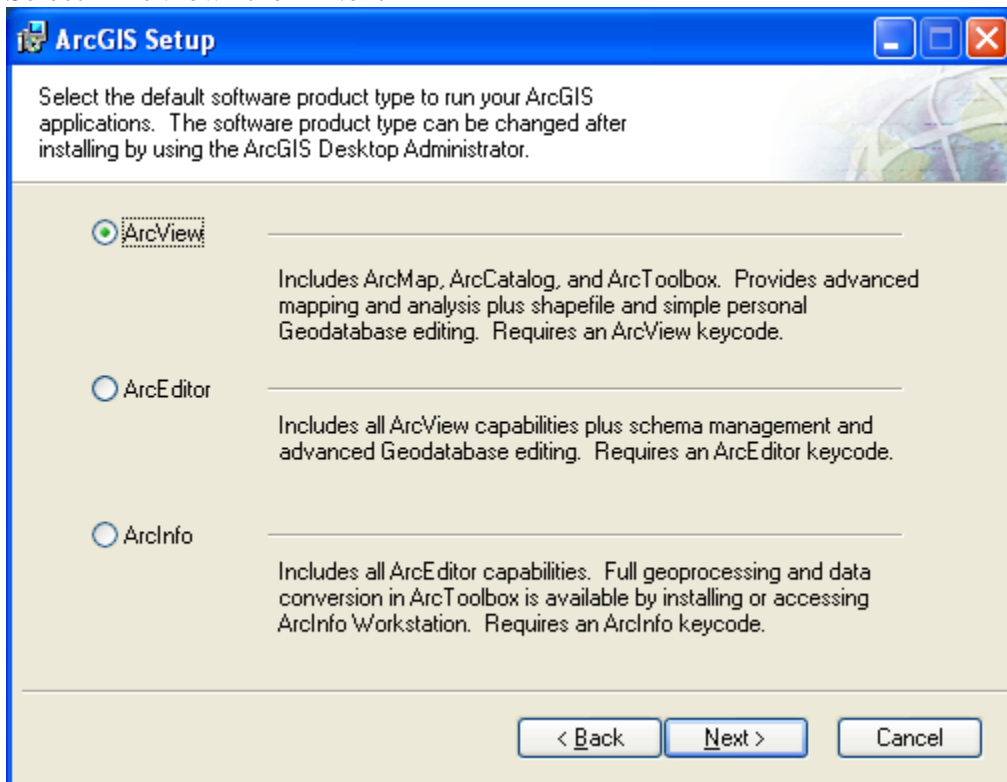
Accept the license agreement



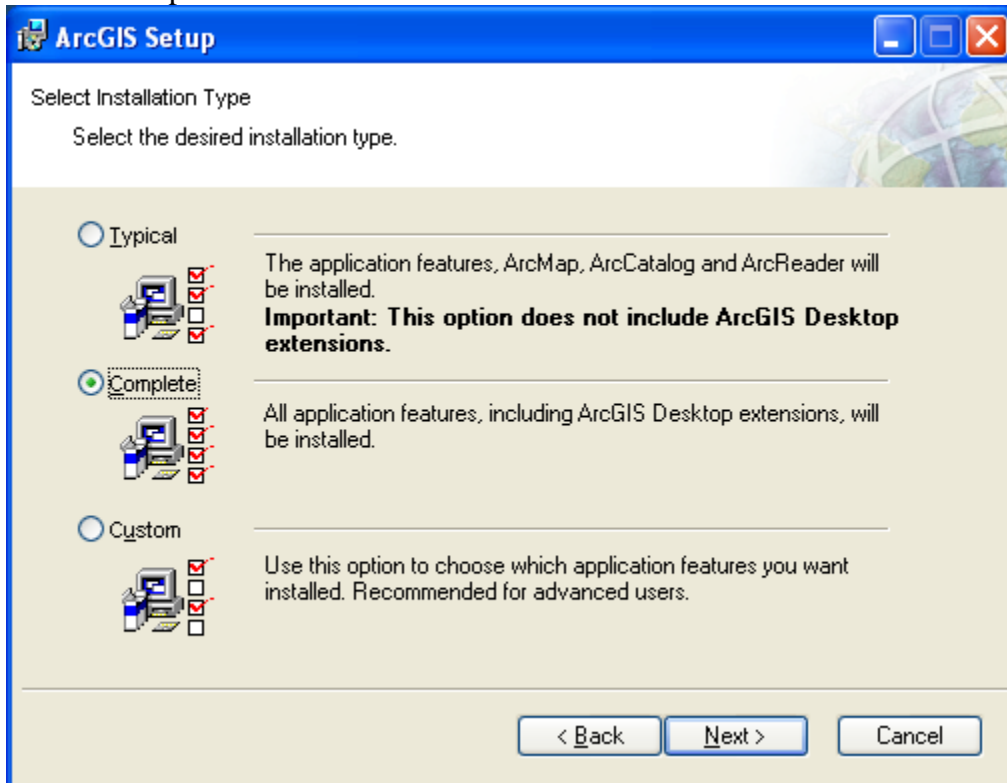
you must have a license



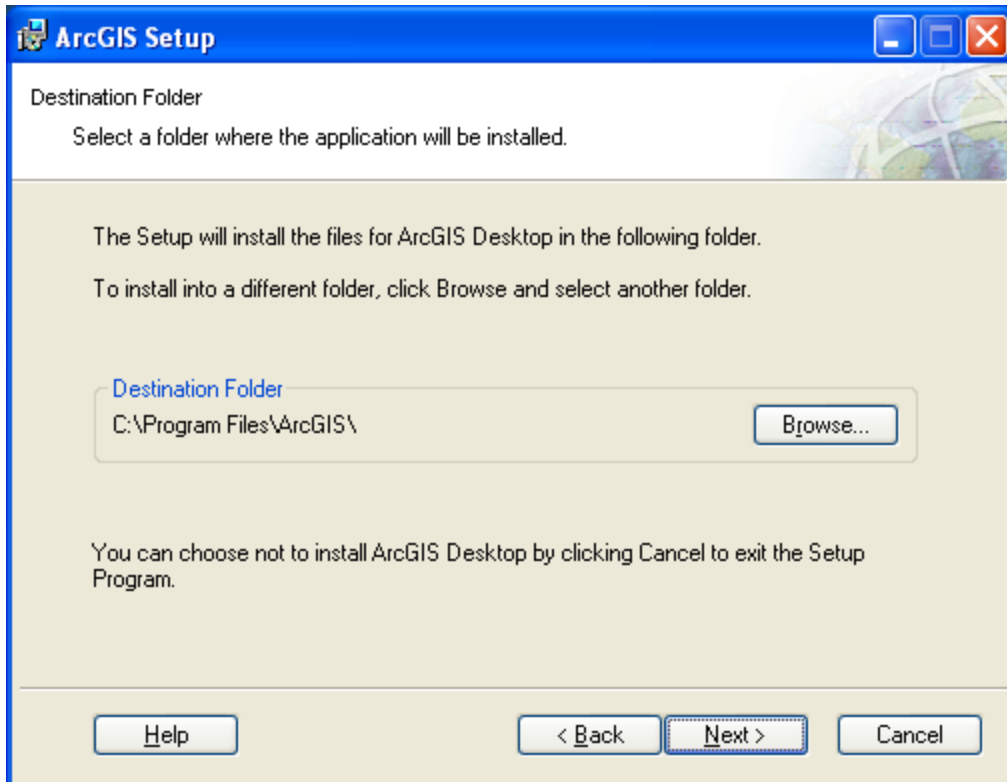
Select "ArcView" then "Next"



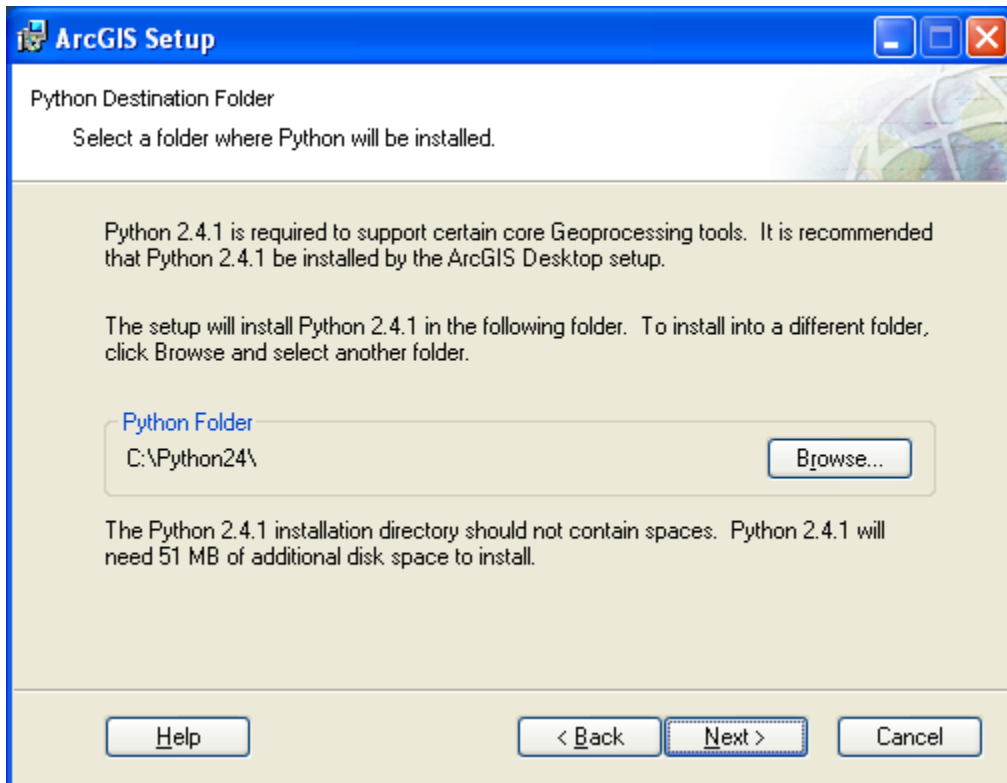
Select “Complete” and “Next”



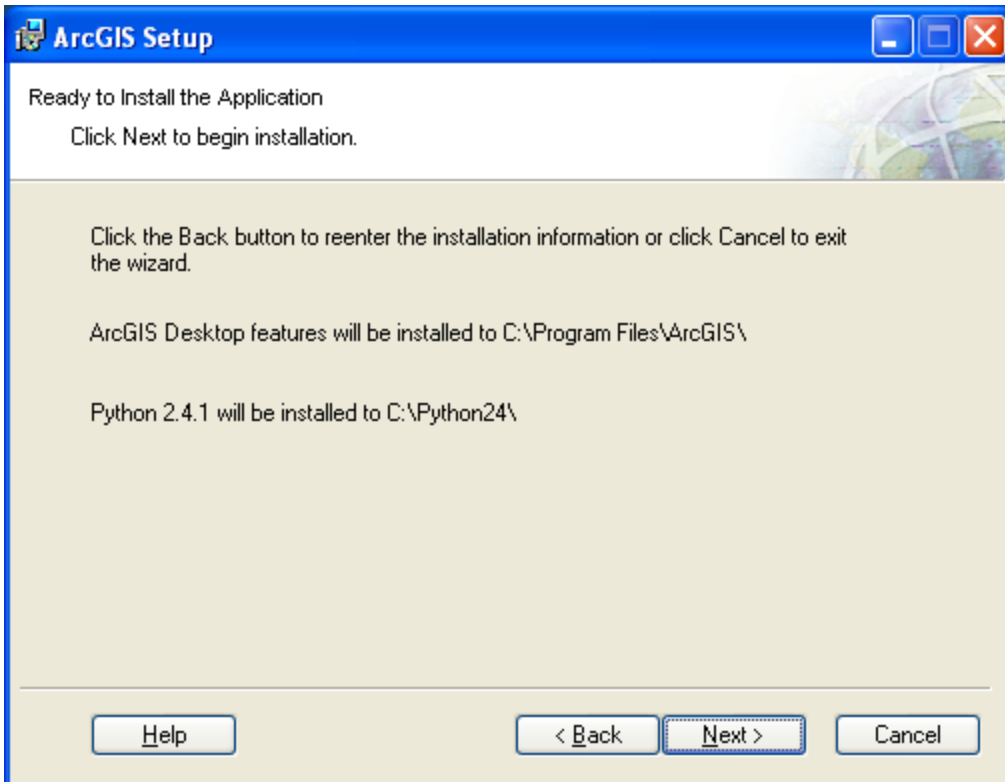
Click on “Next”



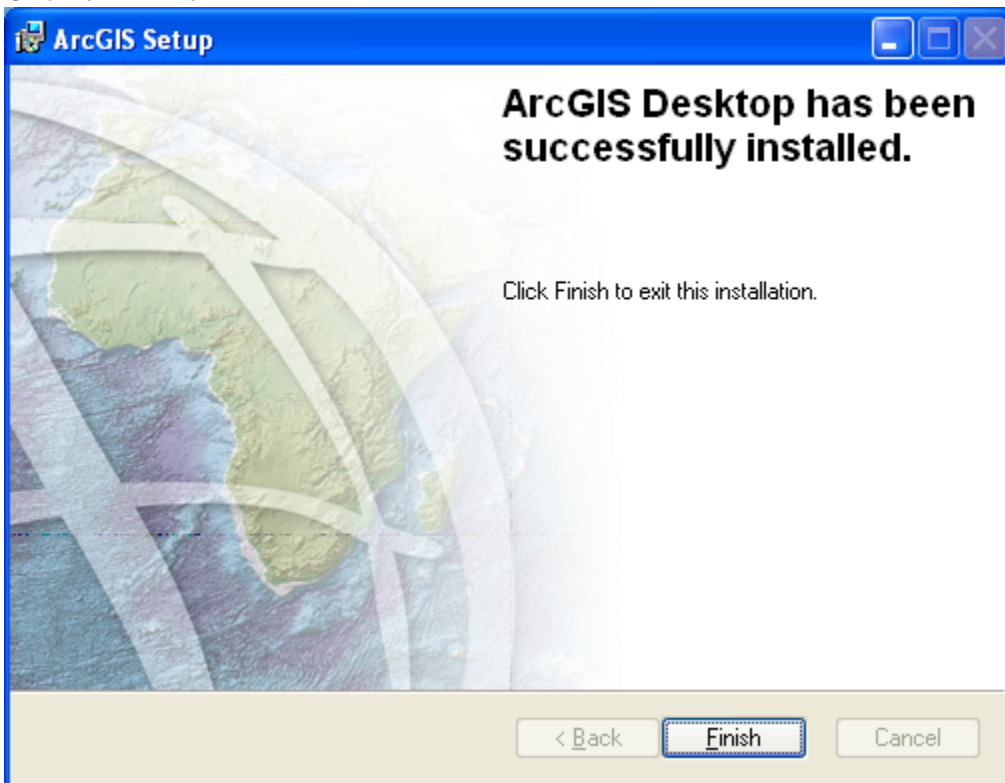
Click on "Next"



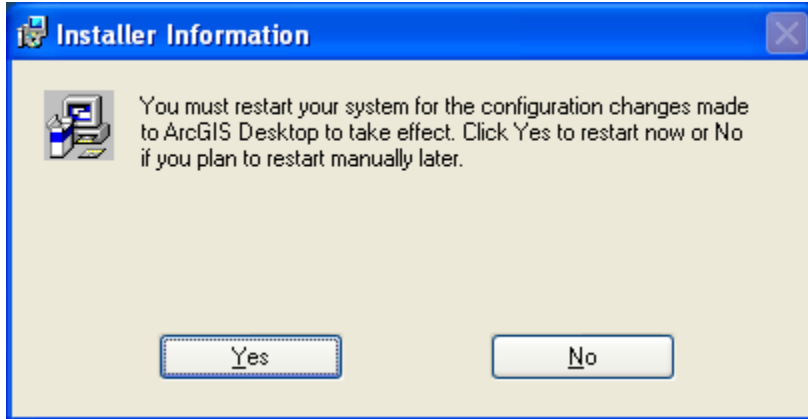
Click on "Next" to begin installation



Click on "Finish"



Click on “Yes” to restart your system.



3) Get the Service Pack 4 at the site below:

http://support.esri.com/index.cfm?fa=downloads_patchesServicePacks.viewPatch&PID=15&MetaID=1351

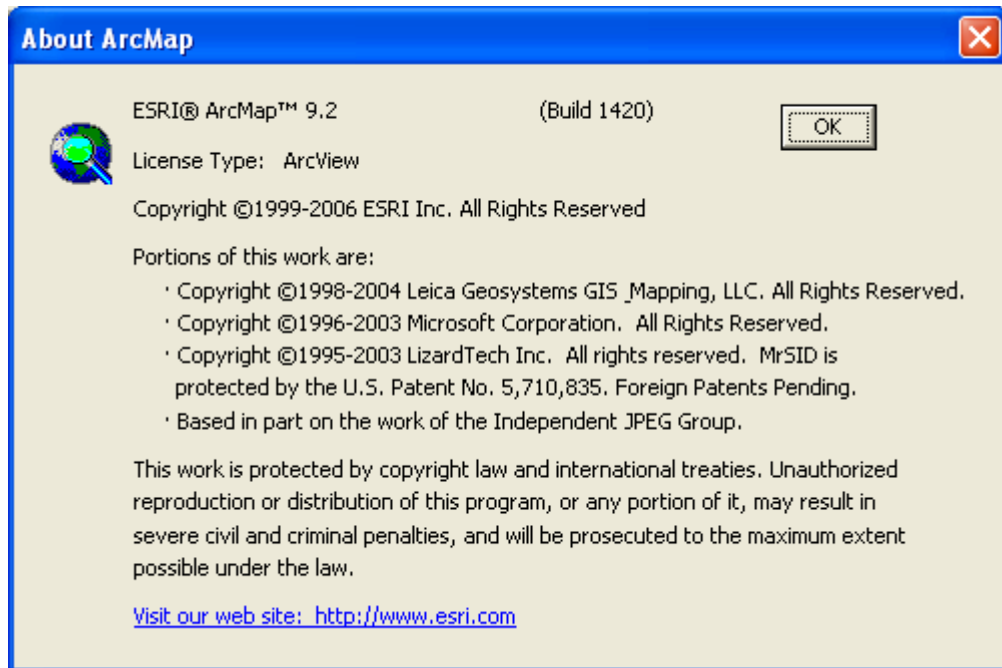
which the file is ArcGisDesktop92sp4.msp download to your machine, then click on this file, it will start the install process.

4) Before installing ArcSWAT below, make icon "C:\Program Files\ArcGIS\Bin\ArcMap.exe"



ArcMap

5) Click on icon and select help/about ArcMap - it should be ESRI ArcMap 9.2 (Build 1420)



6. **(This is for previous ArcSWAT users)**
Backup the swat2005.mdb (normally located at c:\program files\SWAT\ArcSWAT\Databases) for any user defined inputs modified, such as usersoil, userwgn, crop, tillage, fertilizer, pesticide, etc. database tables
7. then **uninstall** the previous ArcSWAT (older version)
8. then install ArcSwat 2.0
9. Import any user defined tables (crop, usersoil,userwgn, tillage, fertilizer, pesticide etc) into the new swat2005.mdb.
10. **Previous projects** will have to be brought into the new version by opening up arcmap and then bring in the project.