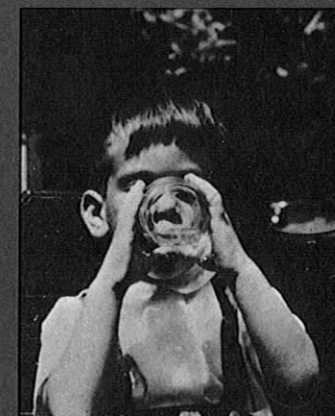
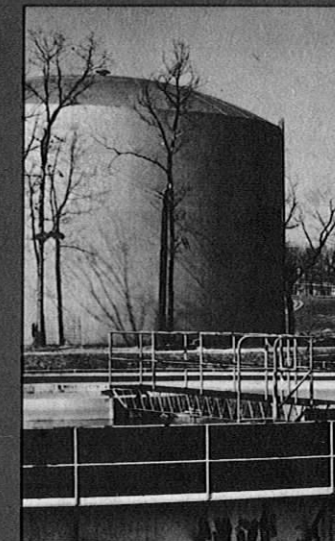


REFERENCE  
DO NOT REMOVE

Fluoridation  
Census  
1969



25th Anniversary  
1945 - 1970

U.S. DEPARTMENT OF HEALTH, EDUCATION, AND WELFARE  
Public Health Service • National Institutes of Health



COMMUNITY	DATE
PUERTO RICO	
BARCELONETA	3 57
BARRANQUITAS	5 56
BAYAMON	1 54
CABO ROJO	56
CAGUAS	1 55
CAMUY	8 57
CAROLINA	1 54
CATANO	1 54
CAYEY	5 56
CEIBA	56
CIALES	5 58
CIDRA	6 58
COAMO	56
COMERIO	3 67
COROZAL	1 55
DORADO	1 54
FAJARDO	56
GUANICA	5 57
GUAYAMA	1 55
GUAYANILLA	8 57
GUAYNABO	1 54
GURABO	1 55
HATILLO	8 57
HORMIGUEROS	4 57
HUMACAO	1 55
ISABELA	1 55
JAYUYA	12 55
JUANA DIAZ	2 57
JUNCOS	2 57
LAJAS	1 55
LA RES	12 55
LAS MARIAS	12 55
LAS PIEDRAS	1 55
LOIZA	1 54
LUQUILLO	5 57
MANATI	56
MARICAO	12 55
MAUNABO	4 66
MAYAGUEZ	1 55
MOCA	1 55
MOROVIS	58
NAGUABO	12 55
NARANJITO	2 59
ORCOVIS	8 57
PATILLAS	4 66
PENUELAS	4 64

COMMUNITY	DATE
PONCE	1 55
QUEBRADILLAS	1 55
RINCON	57
RIO GRANDE	1 54
SABANA GRANDE	12 55
SALINAS	57
SAN GERMAN	1 55
SAN JUAN	1 54
SAN LORENZO	3 60
SAN SEBASTIAN	2 61
SANTA ISABEL	56
TOA ALTA	1 54
TOA BAJA	1 54
TRUJILLO ALTO	1 54
UTUADO	12 55
VEGA ALTA	57
VEGA BAJA	2 63
VIEQUES	8 57
VILLALBA	2 57
YABUCOA	12 55
YAUCO	2 59

# Fluoridation Census 1969



U.S. DEPARTMENT OF HEALTH, EDUCATION, AND WELFARE  
Public Health Service • National Institutes of Health  
Bureau of Health Professions Education and Manpower Training  
Division of Dental Health • Bethesda, Maryland 20014

COMMUNITY	DATE	COMMUNITY	DATE
WISCONSIN			
REWEY	10 67	WAUPUN	11 50
RHINELANDER	3 66	WAUSAU	9 52
RICE LAKE	1 52	WAUSAUKEE	5 69
RICHLAND CENTER	12 49	WAUWATOSA	64
RIO	12 61	WEST ALLIS	7 53
RIPON	6 51	WEST BARABOO	5 49
RIVER FALLS	12 62	WEST BEND	8 50
ROCK SPRINGS	1 67	WEST MILWAUKEE	7 53
ROTHSCHILD	9 64	WEST SALEM	1 67
SAUK CITY	12 66	WESTBY	8 64
SCHOFIELD	5 64	WESTPORT TWP	6 48
SHEBOYGAN	2 46	WEYAUWEGA	4 61
SHEBOYGAN FALLS	2 46	WHITEFISH BAY	7 63
SHELL LAKE	5 52	WHITEHALL	6 51
SHOREWOOD	7 53	WHITEWATER	1 60
SHOREWOOD HILLS	6 48	WILLIAMS BAY	10 65
SHULLSBURG	7 56	WILTON	6 66
SOLDIERS GROVE	1 50	WINDSOR	5 65
SOMERS SAN DIST N	11 64	WIOTA	12 66
SOUTH LAWN S D	3 50	WISCONSIN DELLS	3 64
SOUTH MILWAUKEE	6 52	WISCONSIN RAPIDS	1 51
SOUTH WAYNE	8 68	WONEWOC	3 53
SPARTA	10 51		
SPOONER	5 52	WYOMING	
SPRING GREEN	12 51	LARAMIE	5 52
ST CROIX FALLS	4 67	SARATOGA	5 59
ST FRANCIS	7 53	SINCLAIR	1 52
STITZER	1 67	THERMOPOLIS	2 54
STOUGHTON	9 49	WORLAND	6 66
STRUM	1 67		
STURGEON BAY	5 62	PUERTO RICO	
STURTEVANT	3 50	ADJUNTAS	9 62
SUN PRAIRIE	3 50	AGUADA	1 55
TENNYSON	8 62	AGUADILLA	1 55
THERESA	7 68	AGUAS BUENAS	2 57
TOMAHAWK	6 51	AIBONITO	8 61
TOWER HILL PK SD	7 68	ANASCO	5 58
TREMPEALEAU	11 52	ARECIBO	1 55
TURTLE TWP	4 49	ARROYO	1 55
TWO RIVERS	5 53		
VERONA	2 68		
WASHBURN	1 67		
WATERLOO	12 64		
WATERTOWN	12 50		
WAUNAKEE	4 51		
WAUNONA	6 48		

1970

United States Government Printing Office  
Washington, D.C. 20401

COMMUNITY	DATE	COMMUNITY	DATE
<b>WISCONSIN</b>			
HOLLANDALE	6 67	MONTICELLO	9 64
HORICON	5 52	MORRISONVILLE	9 62
HORTONVILLE	12 68	MOSINEE	3 53
HUDSON	2 64	MOUNT HOPE	1 67
HUSTISFORD	6 66	MOUNT HOREB	2 52
JANESVILLE	2 49	MT PLEASANT TWP	3 50
JEFFERSON	8 63	MUKWONAGO	5 49
JOHNSON CREEK	1 62	MUSCODA	7 65
KENOSHA	11 64	NEENAH	3 50
KESHENA	10 61	NEILLSVILLE	12 54
KEWASKUM	11 62	NEKOOSA	6 59
KOHLER	9 63	NEOPIT	1 51
LA VALLE	12 66	NEW GLARUS	2 52
LAC DU FLAMBEAU	5 63	NEW HOLSTEIN	9 53
LADYSMITH	1 66	NEW RICHMOND	7 60
LAKE GENEVA	5 51	NIAGARA	1 68
LAKE MILLS	7 62	NORTH BAY S D	3 50
LANCASTER	2 61	NORTH FREEDOM	11 63
LAONA S D	9 69	NORTH HUDSON	2 64
LINDEN	6 66	NORTH PARK S D	3 50
LIVINGSTON	6 65	OCONOMOWOC	12 53
LODI	6 52	OCONTO FALLS	2 67
MADISON CITY	6 48	OMRO	3 59
MADISON TOWN	6 48	OREGON	2 50
MANITOWOC	11 68	ORFORDVILLE	9 51
MAPLE BLUFF	6 48	OSCEOLA	8 53
MARINETTE	3 51	OSHKOSH	1 50
MARION	5 66	PALMYRA	3 67
MARSHALL	1 66	PARDEEVILLE	5 65
MARSHFIELD	10 50	PARK FALLS	10 63
MAYVILLE	9 50	PEWAUKEE	1 54
MAZOMANIE	9 51	PHILLIPS	11 50
MCFARLAND	5 63	PLAIN	4 63
MENASHA	8 50	PLATTEVILLE	11 64
MENOMONEE FALLS	9 51	PLEASANT PRAIRIE	11 64
MERRILL	1 62	PLYMOUTH	3 66
MERRIMAC	6 67	PORT EDWARDS	7 54
MIDDLETON	6 50	PORT WASHINGTON	9 50
MILTON	10 53	PORTAGE	3 51
MILTON JUNCTION	2 61	POTOSI	8 62
MILWAUKEE	7 53	POYNETTE	10 52
MINERAL POINT	1 54	PRAIRIE DU SAC	4 64
MONDOVI	2 62	PRENTICE	2 68
MONONA	10 56	PULASKI	5 69
MONROE	5 66	RACINE	3 50
MONTFORT	6 67	RANDOLPH	1 66
		REEDSBURG	2 50

			Page
Introduction			1
Summary of Fluoridation Statistics			5
Figure 1. Distribution of Communities Served with Controlled Fluoridated Water, 1969			7
Table 1. Population, Number of Communities and Water Supply Systems Using Controlled and Natural Fluoridation			8
Table 2. Percent of Population Served with Natural and Controlled Fluoridated Water			9
Figure 2. Communities and Population Served by Controlled Fluoridation			10
Table 3. Institutions, Discontinuations and Reinstatutions of Controlled Fluoridation			11
Table 4. Chemical and Feeder Used in Fluoridating Water Supply Systems by Range of Population Served			12
Table 5. United States Communities Using Controlled Fluoridation			13
Table 6. Authorization for Fluoridation in Communities Fluoridating			14
Table 7. National Summary of Fluoridation Referenda Reported from November 1950 through December 31, 1969			15
Communities Using Fluoridated Water			17
	Page		
Alabama	19	Kentucky	35
Alaska	19	Louisiana	37
Arizona	20	Maine	38
Arkansas	20	Maryland	38
California	21	Massachusetts	41
Colorado	21	Michigan	41
Connecticut	22	Minnesota	43
Delaware	23	Mississippi	45
D. C.	23	Missouri	46
Florida	23	Montana	47
Georgia	24	Nebraska	48
Hawaii	25	Nevada	48
Idaho	25	New Hampshire	48
Illinois	26	New Jersey	48
Indiana	31	New Mexico	49
Iowa	33	New York	49
Kansas	35	North Carolina	53
		North Dakota	54
		Ohio	54
		Oklahoma	56
		Oregon	56
		Pennsylvania	57
		Rhode Island	60
		South Carolina	60
		South Dakota	61
		Tennessee	61
		Texas	64
		Utah	65
		Vermont	65
		Virginia	65
		Washington	66
		West Virginia	66
		Wisconsin	68
		Wyoming	71
		Puerto Rico	71

COMMUNITY	DATE	COMMUNITY	DATE
WISCONSIN			
AMERY	2 52	CORNELL	3 66
ANTIGO	10 65	COTTAGE GROVE	3 53
APPLETON	10 50	CUBA CITY	5 53
ARCADIA	1 68	CUDAHY	11 69
ARENA	6 66	DANE	7 67
ARGYLE	8 53	DARLINGTON	8 53
ARLINGTON	2 67	DE FOREST	8 52
ASHLAND	10 49	DEERFIELD	9 66
BALSAM LAKE	11 66	DELAVAN	5 65
BARABOO	5 49	DICKEYVILLE	5 62
BARNEVELD	4 65	DODGEVILLE	5 53
BEAVER DAM	3 51	DURAND	9 63
BELLEVILLE	8 51	EAGLE RIVER	10 65
BELMONT	12 66	EAST TROY	1 64
BELOIT	4 49	EAU CLAIRE	1 51
BELOIT TWP	4 49	EDGAR	11 49
BENTON	4 62	EDGERTON	10 50
BERLIN	10 51	ELKHORN	4 48
BIRON	2 69	ELMWOOD PARK	3 50
BLACK EARTH	12 65	EVANSVILLE	3 50
BLACK RIVER FALLS	5 53	FALL RIVER	9 62
BLAIR	7 51	FENNIMORE	11 61
BLANCHARDVILLE	11 62	FITCHBURG SAN DIS	9 68
BLOOMING GROVE T	6 48	FOND DU LAC	7 50
BLUE RIVER	5 63	FOOTVILLE	8 64
BOSCOBEL	3 52	FORT ATKINSON	12 49
BRODHEAD	12 64	FOX LAKE	7 67
BROOKLYN	10 63	FOX POINT	7 63
BROWN DEER	8 65	FREDERIC	9 63
BROWNTOWN	11 69	FRIESLAND	10 61
BURKE TOWN	6 48	GALESVILLE	9 51
BUTLER	5 68	GARDEN VILLAGE	4 49
CALEDONIA	3 50	GENOA CITY	11 68
CAMBRIA	3 66	GILLETT	11 66
CAMBRIDGE	6 51	GILMAN	2 69
CASSVILLE	5 62	GLENDALE	7 63
CEDAR GROVE	2 52	GRAFTON	8 69
CEDARBURG	1 57	GRANTSBURG	1 65
CENTRAL COLONY	10 68	GRATIOT	12 66
CHILTON	9 69	GREEN BAY	8 57
CLINTON	2 62	GREENDALE	7 64
COBB	10 62	GREENFIELD	7 64
COLBY	3 69	HARMONY GROVE SD	11 64
COLOMA	8 56	HARTFORD	1 50
COLONIAL HEIGHTS	3 50	HARTLAND	4 69
COLUMBUS	8 50	HAYWARD	6 51
		HAZEL GREEN	11 61

COMMUNITY	DATE
WEST VIRGINIA	
NITRO	9 54
NORTH FORK	5 55
NORTH WAYNE HTS	4 57
NUTTER FORT	1 54
OAK HILL	11 61
OAK WOOD	11 61
OSAGE	2 61
OSBORNE ADDITION	1 60
PARKERSBURG	1 57
PARKVIEW	6 59
PEACH CREEK	4 53
PECKS MILL	4 53
PETERSBURG	3 68
PETERSTOWN	9 65
PHILIPPI	5 64
PINCH	2 63
PINEVILLE	1 54
PLEASANT VALLEY	10 53
POCA	9 54
POINT PLEASANT	12 62
PRINCETON	10 54
PRUDENCE	11 61
QUINCY	9 54
RAND	9 54
RAVENSWOOD	11 57
REAM	3 61
RED JACKET	2 53
RED STAR	11 61
RIPLEY	3 51
RIVER LAKES ADDIT	11 54
RIVER RD ADDITION	2 61
RIVESVILLE	10 53
RONCEVERTE	12 67
ROWLESBURG	4 64
SANDY BOTTOM	9 59
SCARBORO	11 61
SHREWSBURY	9 54
SISSONVILLE	6 63
SISTERSVILLE	6 53
SOUTH CHARLESTON	4 54
SOUTH WILLIAMSON	4 53
SPRING HILL	9 54
ST ALBANS	11 54
ST MARYS	10 66
STALLINGS	4 53
STAR ACRES	2 54

COMMUNITY	DATE
STAR CITY	2 61
STEWART ADDITION	4 68
STONEWOOD	1 54
SUGAR CREEK PT	4 68
SUMMERLEE	11 61
SUMMERSVILLE	10 62
SUMMIT PK WATER C	1 54
SUN VALLEY	11 54
SUNCREST	2 61
SYBIAL ADDITION	1 60
TERRA ALTA	7 60
THORPE	3 61
TRIADELPHIA	9 50
UNION	7 55
UPPER ELKRIDGE	5 55
VALLEY GROVE	9 50
VENUS	5 56
VIENNA	3 61
W VA TR SCH	10 59
WASHINGTON	4 68
WAYNE	4 57
WEIRTON	4 51
WELCH	5 54
WELLSBURG	2 58
WEST LIBERTY	9 50
WEST LOGAN	4 53
WEST UNION	10 67
WESTOVER	2 61
WHEATLAND	2 54
WHEELING	9 50
WHIPPLE	11 61
WHITES ADDITION	4 53
WILCOE	3 61
WILLIAMSON	4 53
WILLIAMSTOWN	7 52
WINFIELD	10 53
WINGROVE	11 61
WINIFREDE	9 54
WISCONSIN	
ABBOTSFORD	10 66
ALBANY	2 63
ALMA	3 52

## INTRODUCTION

Early in 1945, Grand Rapids, Michigan, and Newburgh, New York adjusted the fluoride content of their water supply systems as a measure to prevent tooth decay. Today, over 80 million people in 4,834 communities receive water with the fluoride concentration adjusted to the optimal level. An additional 8.4 million people in 2,624 communities enjoy the protection of an adequate naturally occurring fluoride content in their water supplies. Thus, in 1970, on the 25th anniversary of fluoridation, 56 percent of the Nation's population on public water supplies has access to water with a dentally significant concentration of fluoride. The dramatic increase in the number of people and communities receiving controlled fluoridated water from 1945 to the present is illustrated in Figure 2.

A survey to determine the current number, location and status of communities in the United States receiving fluoridated water was recently conducted by the State Dental Directors at the request of the Division of Dental Health. The results of this survey now appear in this compilation which revises and updates the previous edition of the Fluoridation Census.<sup>1</sup>

Extensive studies have shown that ingestion of water containing the optimal fluoride concentration reduces the incidence of dental caries. The optimal concentration depends upon the annual average of maximum daily air temperatures in the community. Recommended concentrations, according to Public Health Service Drinking Water Standards, 1962, are shown in Table A.

Table A.

Annual average of maximum daily air temperatures *	Recommended control limits— Fluoride concentrations in mg/l		
	Lower	Optimum	Upper
50.0-53.7.....	0.9	1.2	1.7
53.8-58.3.....	0.8	1.1	1.5
58.4-63.8.....	0.8	1.0	1.3
63.9-70.6.....	0.7	0.9	1.2
70.7-79.2.....	0.7	0.8	1.0
79.3-90.5.....	0.6	0.7	0.8

\* Based on temperature data obtained for a minimum of five years.

<sup>1</sup> Fluoridation Census, 1967, Division of Dental Health, National Institutes of Health, U.S. Department of Health, Education, and Welfare.

It is interesting to note that every State in the country has fluoridated communities. In Maryland, Wisconsin, Virginia, Illinois and Connecticut, over 90 percent of the population on public water supplies has access to fluoridated water. Furthermore, Connecticut, Minnesota, Illinois, Delaware, Michigan, South Dakota and Ohio have statewide fluoridation laws. The total number of people receiving fluoridated water in Connecticut has more than tripled since 1965, when it became the first State to enact fluoridation legislation.

\* \* \*

Controlled fluoridation is defined as the conscious maintenance of the optimal fluoride concentration in the water supply. This may be accomplished by adding fluoride chemicals to fluoride-deficient water; by blending two or more sources of water naturally containing fluoride to the optimal concentration; or by defluoridation, that is, removing fluorides in excess of the recommended level. Water supply systems are considered to have natural fluoridation if they contain 0.7 parts per million or more naturally occurring fluoride. Such supplies are not listed in this publication,<sup>2</sup> but information on such supplies is contained in Summary Tables 1 and 2. Although the term natural fluoridation has no particular scientific or official connotation, it has been used in these two instances for the sake of simplification.

The form of the Summary Tables has been changed from that of previous editions of this publication. Significant aspects of the summary information are presented in Table 1. It includes summary statistics, by State, on the population, communities and water supply systems using controlled fluoridation as well as water supplies containing 0.7 parts per million or more naturally occurring fluorides. In the case of natural fluoridation, communities and water supplies are used interchangeably. In Table 2, the number of people on controlled and natural fluoridation combined is given as a percentage of the population served by public water supplies as well as of the total population.

The current population on controlled fluoridation was estimated by applying the Bureau of the Census population projection factors to the population on fluoridated water expressed in terms of the 1960 Census population. However,

<sup>2</sup>See Natural Fluoride Content of Community Water Supplies, 1969, Division of Dental Health, National Institutes of Health, U.S. Department of Health, Education, and Welfare.

COMMUNITY	DATE	COMMUNITY	DATE
WEST VIRGINIA			
BOOMER	10 66	GRANTSVILLE	1 58
BRIARWOOD	2 54	HARRISVILLE	1 56
BRIDGEPORT	1 54	HARVEY	11 59
BUCKHANNON	2 65	HENDERSON	4 53
BURKE HOLLOW	5 55	HENLAWSON	4 53
CAMERON	1 62	HENSLEY HTS	9 59
CARLISLE	11 61	HERNSHAW	9 54
CEREDO	4 63	HILL TOP	11 61
CHARLESTON	4 54	HOOVERSON HEIGHTS	3 66
CHARLTON HEIGHTS	10 66	HUGHESTON	7 55
CHERRY TREE	4 53	HUNTINGTON	3 53
CHESAPEAKE	9 54	HURRICANE	11 57
CHESTER	8 56	IAEGER	11 55
CITIZENS WATER CO	1 54	INSTITUTE	9 54
CLARKSBURG	1 54	JANE LEW	10 62
CLAY	11 63	JUSTICE ADDITION	4 53
CLEARVIEW	9 50	KELLY ADDITION	1 60
CLENDENIN	1 60	KINGMONT	10 53
COBB STATION ADD	1 60	KINGWOOD	6 59
COLFAX	10 53	KISTLER	9 59
CORA	4 53	LAKEVIEW	2 54
CROSS LANES	9 54	LENS CREEK	9 54
DAKOTA	10 53	LESLIE	5 56
DERKIN ADDITION	4 53	LEWISBURG	11 65
DIAMOND	9 54	LIBERTY ADDITION	1 54
DUNBAR	9 54	LILLY GROVE	10 54
EASTERN HEIGHTS	2 54	LOCHGELLY	11 61
ELBERT	3 61	LOGAN	4 53
ELKINS	3 59	LONDON	7 55
ELKRIDGE ADDITION	5 55	MAN	9 59
FAIRMONT	10 53	MARMET	9 54
FAIRVIEW	4 53	MARTINSBURG	2 54
FAYETTEVILLE	8 62	MASONTOWN	10 67
FILBERT	3 61	MATEWAN	2 53
FRAMETOWN	4 68	MCCONNELL	4 53
GARY MCDOWELL CO	3 61	MEADOWDALE	10 53
GASSAWAY	4 68	MILLARVILLE	10 53
GAULEY BRIDGE	10 66	MILTON	8 62
GENTRY TOWN	11 61	MITCHELL HEIGHTS	4 53
GLEN FERRIS	10 66	MONTGOMERY	7 55
GLEN JEAN	11 61	MORGANTOWN	2 61
GLENVILLE	9 58	MORRIS CREEK	7 55
GLENWOOD	1 67	MOSES	5 56
GORE COMMUNITY	1 54	MOUNT GAY	4 53
GRAFTON	6 59	MOUNT HOPE	3 67
GRANT TOWN	10 53	MUD FORK	4 53
		MUNSON	5 56



COMMUNITY	DATE
VIRGINIA	
STATE COLONY	9 51
STAUNTON	1 63
SUFFOLK PART	8 52
TAZEWELL	11 65
TRIANGLE	12 53
VIENNA	6 52
VINTON	12 55
VIRGINIA BEACH PT	8 52
VIRGINIA POLYTECH	12 57
VIRGINIA ST COLL	11 68
WARRENTON	1 64
WAYNESBORO	2 57
WILLIAMSBURG	7 66
WINCHESTER	12 52
WISE	9 65
WOODBIDGE	6 52
WYTHEVILLE	12 63
YORK CO NATL PARK	1 53
YORK COUNTY PART	1 53
YORKTOWN	1 53

COMMUNITY	DATE
WASHINGTON	
ANACORTES	4 63
BATTLE GROUND	2 63
BELLEVUE WD 68	12 69
BOTHELL	12 69
BUCODA	6 67
CAMAS	8 66
CATHLAMET	10 57
CENTRALIA	7 59
CHEHALIS	5 67
CLYDE HILL WD 68	12 69
COULEE DAM	5 56
DES MOINES WD 75	12 69
DUVALL	12 69
EDMONDS PT	12 69
FIRCREST	10 58
FORKS	3 56
HUNTS POINT WD 68	12 69
KALAMA	5 64
KELSO	5 58
KENT	1 64

COMMUNITY	DATE
KIRKLAND	12 69
LAKE FOREST PK PT	12 69
LONGVIEW	8 56
LYNDEN	3 65
MANSON	6 55
MEDINA WD 68	12 69
MERCER ISLAND C	12 69
MERCER ISLAND T	12 69
MONTESANO	11 61
MOUNTLAKE TERR	2 68
NORMANDY PARK	12 69
NORWOOD VILLAGE	2 52
OAK HARBOR	11 55
OAKVILLE	1 68
POULSBO	11 59
PULLMAN	2 56
RAYMOND	3 63
RENTON	12 69
SEATTLE	12 69
TOLEDO	1 66
TUKWILA	12 69
VANCOUVER	7 63
WINLOCK	8 66
WOODLAND	12 56

COMMUNITY	DATE
WEST VIRGINIA	
ALPHEUS	3 61
AMANDAVILLE	9 54
ANAWALT	5 56
ANMOORE	1 54
ANSTED	3 66
ARACOMA	4 53
BARBOURSVILLE	3 53
BARRACKVILLE	10 53
BECKLEY	3 63
BELLE DUPONT CITY	9 54
BENTON FERRY	10 53
BENWOOD	9 50
BETHANY	9 50
BETHLEHEM	9 50
BLUEFIELD	7 53
BLUEVILLE	6 59
BLUEWELL	1 67

the population range indicated in Tables 4, 5 and 6 has not been updated. Table 3 is based upon the year in which the institutions, discontinuations and reinstatements of fluoridation were reported to the Public Health Service, not necessarily the year in which the event occurred.

Table 4 shows the chemical and feeder used for controlled fluoridation by the range of population served. Table 5 indicates the range of population in communities using controlled fluoridation. A review of these tables suggests that the majority of the larger water supply systems and communities in the United States now have controlled fluoridation.

The list beginning on Page 17 contains the names of all communities reported to the Division of Dental Health as having controlled fluoridation as of December 31, 1969. Military and Federal installations are not listed, although the populations served by such installations are included in the Summary Tables. The listing is by State and includes the date on which each community began fluoridating. Most communities have been fluoridating continuously since their original institution. However, some have discontinued fluoridation and later reinstated it. If a community has not had an interruption for more than one year, the date given is the original date of institution. If fluoridation was discontinued for more than one year and later reinstated, the date given is the date of reinstatement.

Although most communities receive their entire water supply from a single source or supplier, some do not. Those communities which are partially fluoridated for this reason are designated in the listing by the word "Part" or "Pt." following their names. Two or more parts of a community may receive fluoridated water from different sources, so that the name of a community may appear more than once in the listing.

\* \* \*

This compilation of the latest available information on controlled fluoridation documents the extent to which this public health measure has gained acceptance in this country a quarter century after its introduction. Along with Natural Fluoride Content of Community Water Supplies, 1969, this publication should afford interest to those who wish to keep abreast of the availability of fluoride for safe and effective prevention of tooth decay.

COMMUNITY	DATE
UTAH	
BRIGHAM CITY	11 66
HELPER	8 56
VERMONT	
BARRE CITY	4 68
BELLOWS FALLS	3 68
BURLINGTON	7 52
DERBY LINE	7 58
ESSEX JUNCTION	2 57
MIDDLEBURY	
MONTPELIER	1 68
NEWPORT	
ORLEANS	
PROCTOR	
SHELBURNE	3 67
ST JOHNSBURY	
SWANTON	8 58
WATERBURY	11 68
VIRGINIA	
ALEXANDRIA	12 53
AMHERST	3 64
ANNANDALE	1 54
ARLINGTON COUNTY	6 53
BEDFORD	7 58
BIG STONE GAP	2 67
BLACKSBURG	12 57
BLUEFIELD	3 64
BRIDGEWATER	11 66
BRISTOL	5 64
CAMPBELL CO PT	9 51
CENTRAL ST HOSP	11 68
CHARLOTTESVILLE	2 64
CHATHAM	6 67
CHESAPEAKE PT 1	8 52
CHESAPEAKE PT 2	8 52

COMMUNITY	DATE
CHRISTIANSBURG	12 57
COLONIAL HTS	11 68
COVINGTON	5 67
CULPEPER	10 65
DANVILLE	10 53
DINWIDDIE CO PT1	11 68
DUBLIN	3 59
DUMFRIES	12 53
ELKTON	7 66
FAIRFAX	2 65
FAIRFAX COUNTY PT	6 52
FALLS CHURCH	6 52
FALMOUTH PART	2 53
FARMVILLE	4 54
FREDERICKSBURG	2 53
FRIES	6 52
FRONT ROYAL	12 63
GALAX	9 67
HAMPTON PART	1 53
HARRISONBURG	9 55
HOLLINS COLLEGE	12 55
HOPEWELL	3 62
LAKESIDE	11 52
LEXINGTON	9 62
LINCOLNIA	1 54
LYNCHBURG	9 51
LYNCHBURG TR SCH	9 51
MARTINSVILLE	6 66
NEWPORT NEWS	1 53
NORFOLK	8 52
NORTON	8 60
OCCOQUON	1 54
PETERSBURG	11 68
PORTSMOUTH	8 52
PR GEO CO PT1	11 68
PRINCE WILLIAM CO	12 53
PULASKI	3 59
RADFORD	6 59
RICHMOND	11 52
ROANOKE	12 55
ROANOKE COUNTY PT	12 55
ROCKY MOUNT	9 54
S CHESTERFIELD CO	11 68
SOUTH BOSTON	2 58
SOUTH HILL	3 66
SPOTSYLVANIA PT	2 63
SPRINGFIELD	1 54

COMMUNITY	DATE
TENNESSEE	
UNION CITY	2 56
VIOLA U D	66
WATAUGA	6 66
WAVERLY	9 59
WAYNESBORO	5 64
WEST KNOX UD	5 68
WEST PINEY U D	1 67
WEST WARREN CO	3 63
WEST WILSON UD	8 67
WESTLAND DR S CO	8 67
WESTOVER U D	3 66
WHITE BLUFF	1 67
WHITEHAVEN	9 67
WINCHESTER	11 53
WOODBURY	6 54
WOODLAWN UD	6 68

COMMUNITY	DATE
TEXAS	
ABLE SPRINGS	66
ALICE	67
ARANSAS PASS	1 60
BARTLETT DEFLUOR	51
BAY CITY	68
BRECKENRIDGE	4 51
BRINKER	67
CARROLLTON	66
CENTER	7 61
COCKRELL HILL	66
COLLEGE MOUND	66
CONROE	2 63
COPPERAS COVE	6 63
CORPUS CHRISTI	12 53
CROCKETT	5 61
DALLAS	66
DENTON	4 64
EDGECLIFF VILLAGE	65
ENNIS	6 67
FARMERS BRANCH	66
FORTWORTH	2 65
GARRETT	67
GONZALES	2 54
GRAHAM	- 10 62

COMMUNITY	DATE
GREGORY	12 53
GRIFFIN PARK	8 53
HARGER HEIGHTS	6 63
HIGHWAY VILLAGE	63
HIRAM	66
INGLESIDE	12 53
IOWA PARK	64
KILLEEN	6 63
LAKE JACKSON	3 61
LAKEVIEW	8 53
LAWRENCE	63
LIVINGSTON	66
LULING	6 60
MARSHALL	5 46
MCCAULLEY	66
MESQUITE	6 64
MUENSTER	5 54
NEDERLAND	67
NEWTON	68
NOLANVILLE	6 63
ODEM	12 53
PARIS	10 52
PEAR RIDGE	8 53
POETRY	66
PORT ARANSAS	12 60
PORT ARTHUR	8 53
PORT NECHES	66
PORTLAND	12 53
ROBY	63
ROSE HILL	66
SABINE	53
SABINE PASS	8 53
SEAGOVILLE	66
SONOMA	67
SULPHUR SPRINGS	67
SWEETWATER	5 57
SYLVESTER	66
TAFT	64
TEMPLE	4 51
TERRELL	7 62
TRENT	63
WELLINGTON	60
WESTOVER HILLS	65

**Summary  
of  
Fluoridation Statistics**

COMMUNITY	DATE	COMMUNITY	DATE
TENNESSEE			
LEWISBURG	7 54	POND UD	4 68
LEXINGTON	1 69	PORTLAND	8 65
LINDEN	10 55	PROCTOR CITY U D	67
LIVINGSTON	6 64	PROSPECT MCDONALD	3 52
LONG ISLAND UD	6 55	PULASKI	11 68
LOOKOUT VALLEY UD	9 52	QUEBECK WLNG U D	1 66
LORETTA	5 68	RADNOR WATER DIST	2 53
LOWER COLLINS UD	6 64	RALEIGH	12 60
LYNCHBURG	9 67	RAYON CITY	8 64
MADISON	1 67	RIDGELY	4 62
MALLORY V U D	1 68	RIPLEY	9 56
MANCHESTER	10 59	ROCKWOOD	9 59
MARTIN	6 67	ROGERSVILLE	1 66
MARYVILLE	11 58	ROTHERWOOD HGTS	61
MAURY CITY	2 67	SAVANNAH	7 57
MCMINNVILLE	6 62	SEVIERVILLE	8 65
MILAN	3 51	SEWANEE	7 59
MILLINGTON	1 57	SHARON	2 67
MT JOY	6 68	SHELBYVILLE	3 55
MT JULIET	9 67	SIAM U D	6 66
MT PLEASANT	2 62	SIGNAL MOUNTAIN	9 52
MULBERRY UD	4 67	SMITHVILLE	1 69
MURFREESBORO	5 54	SMYRNA	3 64
N E LAWRENCE U D	66	SO BLOUNT UTIL DI	5 64
N W BEDFORD U D	66	SO ELIZABETHTON	6 66
NASHVILLE	2 53	SOUTH BRISTOL	7 52
NEW JOHNSONVILLE	7 66	SOUTH FULTON	1 67
NEW MARKET U D	12 66	SOUTH KINGSPOUR UD	12 63
NEW PROSPECT	2 65	SOUTH PITTSBURG	4 60
NEW TAZEWELL	8 67	SOUTHERN W C	12 63
NEWBERN	4 68	SPARTA	1 58
NEWPORT	1 65	SPRING CREEK UD	11 66
NIOTA	3 64	SPRINGFIELD	7 54
NORTH DICKSON UD	3 68	STONES RIVER U D	6 66
NORTH WARREN UD	66	STRIGGERSVILLE UD	9 67
NUNNELLY	3 68	SULPHUR SPRINGS UD	8 61
OAK RIDGE	11 53	SWAN POND U D	1 66
OCONNER UD	1 69	TAZEWELL	8 67
OLD HICKORY UD	8 64	TIPTONVILLE	12 52
OLD KNOX HWY U D	66	TRACY CITY	11 66
PARIS	10 52	TRENTON	1 64
PARSON	4 65	TRI CITIES UD	6 66
PERRYVILLE	4 65	TRI COUNTY U D	66
PIGEON FORGE	8 65	TUCKALEECHEE U D	11 65
PIKEVILLE	3 56	TULLAHOMA	1 64
PINEY FLATTS UD	8 66	TURNBULL U D	1 67
		UNICOI UD	6 66

COMMUNITY	DATE	COMMUNITY	DATE
TENNESSEE			
ARLINGTON	7 68	EAST DYERSBURG	65
ASHLAND CITY	3 68	EAST RIDGE	9 52
ATHENS	9 65	ELIZABETHTON	6 66
BANGHAM	4 66	ERIN	3 67
BARTLETT	8 61	ERWIN	3 62
BEDFORD UD	4 68	ETHERIDGE UD	1 65
BELFAST	11 63	ETOWAH	6 66
BENTON	8 68	FALL RIVER RD U D	8 67
BOILING FORK	12 65	FALLING WATER U D	1 66
BOLIVAR	3 66	FARMINGTON U D	10 67
BRISTOL	7 52	FAYETTEVILLE	6 57
BROWNSVILLE	6 51	FINCASTLE UD	10 61
CAMDEN	8 65	FIRST U D KNOX CO	8 67
CENTER GROVE	1 64	FIRST UD TIPTON	2 65
CENTERTOWN U D	7 65	FLATWOODS UD	10 64
CENTERVILLE	11 67	FRANKLIN	5 63
CHAPEL HILL	2 65	FRIENDSVILLE	9 65
CHATTANOOGA	9 52	GALLATIN	2 57
CLAIBORNE CO U D	8 67	GERMANTOWN	4 52
CLARKSVILLE	3 60	GLEN HILLS U D	12 65
CLEVELAND	3 52	GREENEVILLE	3 58
CLIFTON	7 66	HARPETH VALLEY UD	11 68
COCKE CO UTIL DIS	1 65	HARRIMAN	2 60
COLUMBIA	6 60	HARTSVILLE	11 56
CONSOLIDATED U D	12 64	HENDERSON	1 67
COOKEVILLE	12 52	HENDERSONVILLE	5 66
CORNORSVILLE	3 67	HERMITAGE HILLS	6 66
COVINGTON	1 57	HIGHLAND RIM U D	3 66
COWAN	1 58	HIXSON	3 59
CROSS ANCHOR	11 67	HOHENWALD	7 66
CROSSVILLE	3 53	HOLSTON UD	2 55
CUMBERLAND HTS	3 60	HUMBOLDT	6 63
CUNNINGHAM U P	67	INTERMONT U D	12 66
DE WHITE U D	8 67	IRVING COLLEGE	3 64
DECATUR	9 67	JACKSON	11 62
DECATURVILLE	4 65	JASPER	3 67
DECHERD	1 58	JEFFERSON CITY	12 66
DICKSON	1 67	JOELTON U D	9 65
DOUBLE SPRING PT1	8 66	JOHNSON CITY	8 61
DOUBLE SPRING PT2	11 64	KELSO	6 57
DRESDEN	6 55	KINGSPORT	6 55
DRY VALLEY U D	11 66	LA FOLLETTE	8 57
DUNLAP	12 66	LAKE CITY	8 67
DYERSBURG	3 57	LAKESWOOD	8 64
E MONTGOMERY U D	66	LAVERGNE UD	3 64
EAST BRAINERD	9 52	LAWRENCEBURG	2 53
		LEBANON	3 56

Figure 1  
DISTRIBUTION OF COMMUNITIES SERVED WITH CONTROLLED FLUORIDATED WATER, 1969

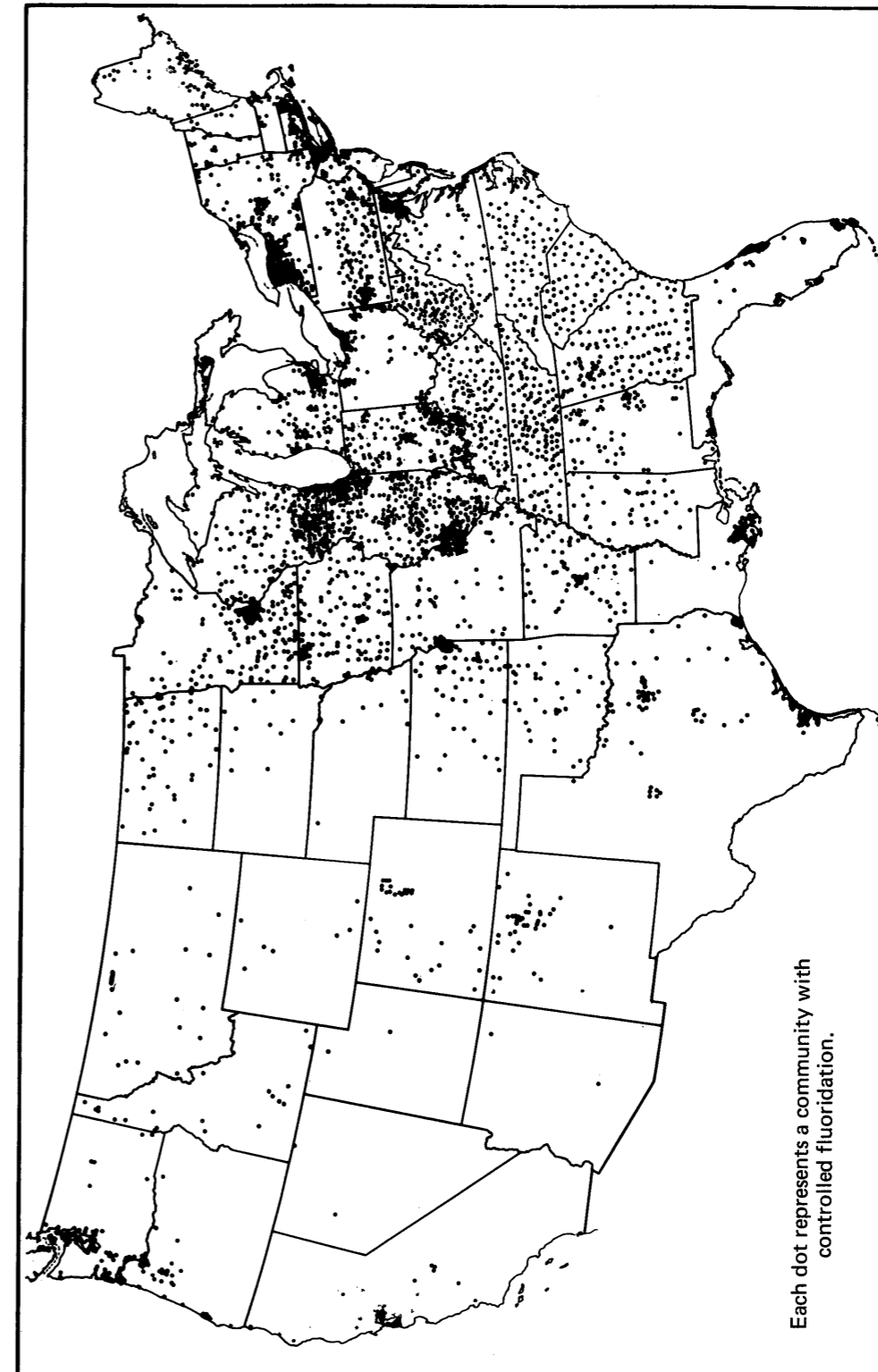


Table 1  
 POPULATION, NUMBER OF COMMUNITIES AND WATER SUPPLY SYSTEMS USING  
 CONTROLLED AND NATURAL FLUORIDATION AS OF DECEMBER 31, 1969

	CONTROLLED			NATURAL	
	Pop. Using Controlled	Communities Controlled	Water Systems	Pop. Using Natural	Communities or Systems
United States	80,096,860	4,834	2,653	8,378,824	2,624
Alabama	864,468	80	43	29,236	20
Alaska	124,163	16	14	530	2
Arizona	39,148	5	5	270,479	105
Arkansas	694,214	80	56	2,817	4
California	1,963,880	67	40	920,320	54
Colorado	987,116	42	28	485,963	100
Connecticut	2,176,951	73	27	2,180	6
Delaware	217,115	5	5		
Dist. of Columbia	792,986	3	1		
Florida	1,456,676	77	21	300,446	26
Georgia	2,157,001	153	72	16,670	7
Hawaii	101,539	6	4		
Idaho	53,917	15	13	67,606	35
Illinois	7,826,131	499	328	675,854	212
Indiana	2,740,025	198	102	182,722	88
Iowa	1,214,644	131	118	276,035	163
Kansas	893,524	74	46	139,957	85
Kentucky	1,412,698	172	100	14,220	8
Louisiana	174,041	35	9	98,377	36
Maine	288,995	52	39	712	1
Maryland	2,844,041	223	34	32,811	26
Massachusetts	507,104	37	32		
Michigan	5,413,986	180	99	95,965	47
Minnesota	1,949,111	178	158	3,813	12
Mississippi	419,263	35	35	57,730	18
Missouri	1,857,581	155	52	125,240	72
Montana	47,508	21	16	83,950	39
Nebraska	458,814	11	11	83,971	65
Nevada	5,010	2	2	10,641	13
New Hampshire	53,104	8	7	10,996	8
New Jersey	828,167	56	23	83,000	16
New Mexico	101,796	42	40	291,396	161
New York	12,143,385	345	85	1,745	6
North Carolina	1,906,237	96	66	55,500	18
North Dakota	252,942	55	52	33,515	38
Ohio	3,736,142	152	52	231,279	127
Oklahoma	1,069,441	33	31	246,383	158
Oregon	294,368	44	24	30,994	29
Pennsylvania	4,664,188	271	64		
Rhode Island	729,008	24	9	600	2
South Carolina	886,938	81	44	75,270	24
South Dakota	101,855	15	15	66,347	108
Tennessee	1,708,670	207	130		
Texas	2,508,319	81	41	3,022,721	508
Utah	22,359	3	3	2,874	9
Vermont	117,114	14	14		
Virginia	2,747,738	98	50	57,577	96
Washington	1,272,169	48	33	47,727	15
West Virginia	912,665	194	74	400	1
Wisconsin	2,483,261	257	222	84,100	44
Wyoming	28,919	5	5	58,155	12
Puerto Rico	1,846,425	80	59		

COMMUNITY	DATE	COMMUNITY	DATE
SOUTH CAROLINA			
COLLEGE HEIGHTS	10 51	SARDIS WD	4 55
COLUMBIA	7 67	SENECA	10 63
COWPENS	8 68	SPARTANBURG	8 68
DARLINGTON	2 58	SPG C M KERSHAW	5 58
DENTSVILLE	7 67	SPG C M LANCASTER	12 58
DILLON	2 66	ST MATTHEWS	8 63
DUNCAN	8 68	SUMMERVILLE	8 62
EASLEY	9 67	SUMTER	12 64
EASLEY C W D	9 67	UNION	4 55
EAST CLEMSON WD	2 61	WELLFORD	8 68
EAST SENECA WD	10 63	WEST COLUMBIA	1 67
ENDREE	8 68	WEST HARTSVILLE	10 51
FINGERVILLE	8 68	WESTMINSTER	6 63
FLORENCE	1 68	WHITES POND WD	12 64
FOREST ACRES	7 67	WHITTEN VILLAGE	6 62
FORT LAWN	10 62	WINNSBORO	6 59
FORT MILL	5 51	WOODRUFF	8 68
GAFFNEY	2 67	YORK	2 63
GRAMLING	8 68		
GREAT FALLS	10 62	SOUTH DAKOTA	
GREER	10 67	ABERDEEN	1 51
HARTSVILLE	10 51	BRITTON DEFLUOR	11 48
HOLLY HILL	1 62	BROOKINGS	12 61
HONEA PATH	8 64	GREGORY	7 69
INMAN	8 68	HOSMER	4 57
JOHNSTON	3 62	HURON	9 56
LANCASTER	12 59	MILBANK	4 68
LIMESTONE R C WD	9 52	MITCHELL	10 54
LOVERS LANE WD	8 68	MOBRIDGE	5 52
LUKESVILLE WD	4 55	PIERRE	8 68
MARION	7 57	SPRINGFIELD	6 67
MAYO	8 68	TARKER	1 69
MEANSVILLE RILEY	8 68	VERMILLION	7 52
MITFORD WD	10 62	WATERTOWN	11 53
NEW ELLENTON	9 67	WESTINGTON SPGS	5 66
NINETY SIX	8 50		
NORTH AUGUSTA	6 63	TENNESSEE	
NORTH HARTSVILLE	10 51	ALAMO	7 64
ORANGEBURG	9 52	ALCOA	5 64
PACOLET	8 68		
PAGELAND	2 69		
PIONEER WD	6 63		
PONTIAC	7 67		
RICHBURG	10 62		
ROCK HILL	3 52		
ROEBUCK	8 68		

COMMUNITY	DATE
PENNSYLVANIA	
SWISSVALE	1 53
SYKESVILLE	10 65
TARENTUM	10 64
TAYLOR	1 54
TEMPLE	10 68
THORNBURG	7 58
TRAFFORD	1 53
TRAINER BOROUGH	10 68
TURTLE CREEK	1 53
UNION TOWNSHIP	12 53
UNION TWP PT	5 68
UNIONTOWN	7 53
UPLAND BOROUGH	10 68
UPPER ALLEN TWP	11 68
UPPER ALLEN TWP P	5 56
UPPER CHICHESTER	10 68
UPPER ST CLAIR T	7 58
WALL BOROUGH	1 53
WEST BRIDGEWATER	5 67
WEST EASTON BORO	5 52
WEST HOMESTEAD	7 58
WEST LAMPETER TWP	10 60
WEST LANCASTER PT	12 66
WEST MAYFIELD	5 67
WEST MIFFLIN	7 58
WEST READING	10 68
WETMORE TWP PT	3 60
WHITAKER PART	7 58
WHITE TWP	5 67
WHITE TWP PT	10 57
WHITEHALL	7 58
WILKINS TOWNSHIP	1 53
WILKINSBURG	1 53
WILLIAMS TOWNSHIP	5 52
WILLIAMSPORT	12 66
WILMERDING	1 53
WILSON BOROUGH	5 52
WINDSOR	1 67
WINDSOR TWP PT	12 68
WORMLEYSBURG	5 56
WYOMISSING	10 68
YOE	12 68
YORK TWP PT	12 68

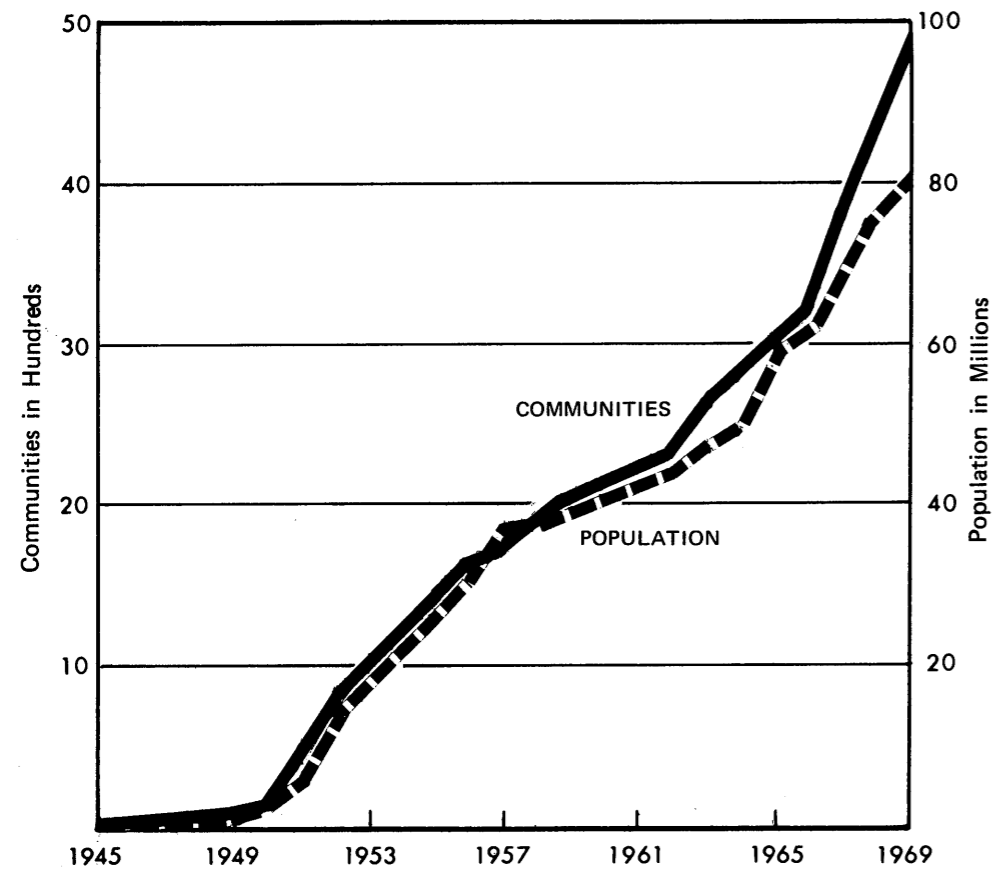
COMMUNITY	DATE
RHODE ISLAND	
BARRINGTON	5 52
BRISTOL	5 52
CENTRAL FALLS	1 57
CRANSTON	8 52
CUMBERLAND PART 1	11 59
CUMBERLAND PART 2	1 57
EAST PROVIDENCE	4 61
JOHNSTON	8 52
MARIEVILLE	1 57
MIDDLETOWN	7 53
N PROVIDENCE PT1	8 52
N PROVIDENCE PT2	8 52
NEWPORT	7 53
NORTH SMITHFIELD	6 57
PASCOAG-BRIDGETON	6 63
PAWTUCKET	1 57
PORTSMOUTH	7 53
PROVIDENCE	8 52
SMITHFIELD	8 52
WARREN	5 52
WARWICK	8 52
WOONSOCKET	12 62
SOUTH CAROLINA	
AIKEN	11 55
ANDERSON	6 69
BELTON	8 64
BISHOPVILLE	10 56
BOILING SPRINGS	8 68
CAMDEN	9 66
CAMPOBELLO	8 68
CAYCE	11 54
CHERAW	7 53
CHESNEE	8 68
CHESTER	10 62
CHESTERFIELD	1 60
CLEMSON	2 61
CLINTON	4 65

Table 2  
PERCENT OF POPULATION SERVED WITH NATURAL & CONTROLLED FLUORIDATED WATER  
DECEMBER 31, 1969

	Percentage of Population on Public Water Supplies Served with Fluoridated Water	Percentage of Total Population Served with Fluoridated Water
United States	55.9	43.0
Alabama	40.1	25.4
Alaska	78.8	43.5
Arizona	20.4	18.1
Arkansas	64.3	34.9
California	15.9	14.8
Colorado	84.0	69.2
Connecticut	90.4	72.2
Delaware	54.1	40.0
Dist. of Columbia	100.0	100.0
Florida	35.2	27.2
Georgia	66.9	46.5
Hawaii	13.1	12.7
Idaho	25.5	16.8
Illinois	90.8	76.7
Indiana	86.0	56.8
Iowa	78.3	53.6
Kansas	58.0	44.3
Kentucky	77.0	44.1
Louisiana	9.7	7.3
Maine	49.4	29.6
Maryland	97.7	76.3
Massachusetts	10.0	9.3
Michigan	89.5	62.7
Minnesota	86.7	52.4
Mississippi	40.0	20.1
Missouri	57.8	42.5
Montana	28.0	18.9
Nebraska	52.0	37.4
Nevada	4.0	3.4
New Hampshire	13.4	8.8
New Jersey	14.5	12.7
New Mexico	54.4	39.8
New York	75.1	65.8
North Carolina	73.9	37.4
North Dakota	88.8	47.1
Ohio	47.2	36.7
Oklahoma	67.0	50.8
Oregon	20.9	15.9
Pennsylvania	49.0	39.4
Rhode Island	89.8	80.3
South Carolina	63.2	35.6
South Dakota	43.5	25.5
Tennessee	65.7	42.8
Texas	60.8	49.0
Utah	2.6	2.4
Vermont	45.1	26.3
Virginia	93.2	59.6
Washington	46.3	38.1
West Virginia	80.9	50.0
Wisconsin	93.5	60.6
Wyoming	36.0	26.9
Puerto Rico	92.3	66.7

Figure 2

COMMUNITIES AND POPULATION SERVED BY CONTROLLED FLUORIDATION, 1945 - 1969



COMMUNITY	DATE	COMMUNITY	DATE
PENNSYLVANIA			
MONROE TWP PT	11 68	PLEASANT HILLS	7 58
MONROEVILLE	1 53	PLUM BOROUGH	1 58
MONTROSE	11 63	PULASKI TWP	5 67
MOON TOWNSHIP	4 66	QUARRYVILLE	5 61
MORGAN TWP PT	2 64	RANKIN	1 53
MORRIS TWP PT	9 63	READING	10 68
MOUNT MORRIS	2 67	RED LION	12 68
MT LEBANON TWP	7 58	REDSTONE TWP PT	2 64
MT OLIVER	7 58	RESERVE TWP PT	12 52
MT PLEASANT TWP P	5 58	RICES LAND BORO	2 64
MUHLENBERG TWP PT	10 68	RIDGWAY	1 53
MUNHALL	7 58	RIDGWAY TWP PT	1 53
MYERSTOWN BORO	11 68	ROBINSON TWP PT1	7 58
N VERSAILLES TWP	1 53	ROBINSON TWP PT2	5 58
NATRONA	12 52	ROCHESTER	5 67
NESHANNOCK TWP	12 53	ROCHESTER TWP	5 67
NETHER PROV TWP	10 68	ROSE TWP PT	5 68
NEW BRIGHTON	5 67	ROSSLYN FARMS	7 58
NEW CASTLE	12 53	RUSH TWP PT	9 63
NEW CUMBERLAND	5 56	S WILLIAMSPORT	12 66
NEW KENSINGTON B	1 58	SANDY TWP	10 65
NORTH BRADDOCK	1 53	SCHUYLKILL HAVEN	7 68
NORTH FAYETTE TWP	5 58	SCOTT TOWNSHIP	7 58
NORTH UNION TWP	7 53	SEWICKLEY	3 57
NORTHEAST	9 58	SEWICKLEY HGTS B	3 57
DHARA TWP	9 60	SEWICKLEY HGTS T	3 57
OLD LYCOMING TWP	12 66	SHARPSVILLE	1 63
ONTELAUNEE TWP PT	10 68	SHENANGO TOWNSHIP	12 53
OSBORNE BORO	3 57	SHILLINGTON BORO	1 69
PALMER BOROUGH	5 52	SHILLINGTON PT	10 68
PARKSIDE BOROUGH	10 68	SHILOH	10 63
PATTERSON HTS	5 67	SHIREMANSTOWN	5 56
PATTERSON TWP	5 67	SILVER SPG TWP PT	5 56
PATTON	1 53	SILVER SPRING TWP	11 68
PATTON TWP PT	6 54	SMITH TWP PT	5 58
PENN TOWNSHIP	1 53	SNOWDEN TOWNSHIP	7 58
PERRY TWP PT	2 67	SOMERSET	9 57
PERRY TWP PT 2	2 64	SOUTH FAYETTE PT1	7 58
PERRYOPOLIS	2 64	SOUTH FAYETTE PT2	5 58
PHILADELPHIA	9 54	SOUTH NEW CASTLE	12 53
PHILIPSBURG	9 63	SOUTH PHILIPSBURG	9 63
PITCAIRN	1 53	SOUTH UNION TWP	7 53
PITTSBURG 13 WARD	1 53	SPRING TWP PT	8 68
PITTSBURG 9 WARDS	7 58	SPRING TWP PT 2	1 69
PITTSBURGH	12 52	STATE COLLEGE	7 54
PITTSBURGH ARPT	4 66	STRATTANVILLE	7 64
		SWATARA TWP	10 60



COMMUNITY	DATE
PENNSYLVANIA	
COLLEGE TWP PT	6 54
COLLIER TOWNSHIP	7 58
CONCORD TWP PT	10 68
CONWAY	5 67
CORSICA BOROUGH	5 68
CRAFTON	7 58
CRESSONA BOROUGH	7 68
CUMBERLAND TWP PT	2 64
CUMRU TWP PT	10 68
CUMRU TWP PT 2	1 69
DALLASTOWN	12 68
DAUGHERTY TWP	5 67
DECATUR TOWNSHIP	9 63
DORMONT	7 58
DRAVOSBURG PART	7 58
DU BOIS	10 65
DUBOISTOWN	12 66
DUNBAR TWP PT	7 53
E PENSBORO TWP	5 56
E ROCHESTER	5 67
EAST BETHLEHEM PT	2 64
EAST DEER TWP PT	12 52
EAST LAMPETER TWP	10 60
EAST MCKEESPORT	1 53
EAST PITTSBURGH	1 53
EASTON	5 52
EASTVALE	5 67
EBENSBURG	12 51
EDGEWOOD	1 53
EDGEWORTH BORO PT	3 57
FAIRVIEW TWP PT	5 56
FALLSTON	5 67
FERGUSON TWP PT	6 54
FINDLAY TWP PT	4 66
FINLEYVILLE	7 58
FLEETWOOD	4 66
FORD CITY	6 51
FOREST HILLS	1 53
FORKS TWP PT	5 52
FOX CHAPEL BORO	9 60
FREEDOM	5 67
GEORGES TWP PT	2 64
GERMAN TWP PT	2 64
GLENDON BOROUGH	5 52
GREENTREE	7 58
GREENVILLE	7 59

COMMUNITY	DATE
HAMPDEN TWP PT 1	11 68
HAMPDEN TWP PT 2	5 56
HARMAR TWP	9 60
HARRIS TWP PT	6 54
HARRISON	12 52
HAYSVILLE BORO	3 57
HEIDELBERG	7 58
HEMPFIELD EAST PT	6 66
HEMPFIELD WEST PT	6 66
HICKORY TOWNSHIP	12 53
HILL CREST DEVEL	6 64
HOMESTEAD	12 52
INDIANA	10 57
INDIANA TWP	9 60
INGRAM	7 58
JACKSON TWP PT	11 68
JEFFERSON	7 58
JEFFERSON TWP PT1	2 64
KANE BOROUGH	3 60
KENHORST	10 68
KENNETT SQUARE	6 65
KITTANNING	11 58
LANCASTER	10 60
LEMOYNE	5 56
LEVITTOWN	7 58
LIBRARY	7 58
LOWER ALLEN PT1	11 68
LOWER ALLEN PT2	5 56
LOWER ALSACE TWP	10 68
LOWER BURRELL TWP	1 58
LOWER CHICHESTER	10 68
LOYALSOCK TWP	12 66
LUZERNE TWP PT	2 64
MANHEIM TWP	10 60
MANOR TWP	10 60
MANORVILLE	6 51
MANSFIELD	3 54
MARCUS HOOK BORO	10 68
MCDONALD	5 58
MECHANICSBURG	11 68
MEDIA	2 65
MENALLEN TWP PT	7 53
MENALLEN TWP PT	2 64
MIDDLETOWN TWP PT	10 68
MIDWAY BOROUGH	5 58
MILLERSBURG	10 54
MOHNTON BORO	1 69

Table 3  
INSTITUTIONS, DISCONTINUATIONS, AND REINSTITUTIONS OF CONTROLLED FLUORIDATION  
1945 - 1969

Year**	Fluoridation Status at End of Each Year		Fluoridation Instituted Whether or Not Discontinued		Fluoridation Discontinued Whether or Not Reinstated		Fluoridation Reinstated After Discontinuance	
	Number of Communities	Population*	Number of Communities	Population*	Number of Communities	Population*	Number of Communities	Population*
1945	6	231,920	6	231,920				
1946	12	332,467	12	332,467				
1947	16	458,748	16	458,748				
1948	26	581,683	26	581,683				
1949	49	1,062,779	49	1,062,779				
1950	100	1,578,578	101	1,595,128	1	16,550	2	171,531
1951	368	5,079,321	370	5,108,771	2	29,450	4	175,651
1952	751	13,875,005	758	14,079,130	7	204,125	6	190,550
1953	1,007	17,666,339	1,019	17,751,207	14	256,399	10	232,255
1954	1,194	22,336,884	1,226	23,528,254	36	1,367,021	13	305,663
1955	1,347	26,278,820	1,407	27,883,734	66	1,795,464	15	309,936
1956	1,583	33,905,474	1,656	35,672,794	83	1,999,575	17	335,721
1957	1,717	36,215,208	1,801	38,124,663	97	2,215,118	17	335,721
1958	1,890	38,461,589	1,986	40,463,466	111	2,311,813	20	345,895
1959	1,990	39,628,377	2,093	41,801,740	89	2,509,084	20	345,895
1960	2,111	41,179,694	2,221	43,390,924	127	2,546,951	26	435,549
1961	2,197	42,201,115	2,301	44,418,750	130	2,563,530	34	650,225
1962	2,321	44,045,392	2,429	46,289,156	134	2,589,659	38	887,373
1963	2,612	46,678,380	2,723	49,002,866	143	2,760,035	42	942,884
1964	2,758	48,363,066	2,869	51,179,019	152	3,466,178	44	1,129,228
1965	3,030	59,855,024	3,141	63,873,219	163	4,905,568	54	1,156,779
1966	3,145	62,427,290	3,257	66,446,000	165	4,961,594	55	1,581,519
1967	3,827	71,916,682	3,949	75,900,389	176	5,112,935	67	
1968	4,229	74,579,666	4,351	79,208,173	177	5,785,286		
1969	4,834	80,096,860	4,980	84,393,728	213	5,878,387		

\* Includes Adjustment for Population Growth Based on the Bureau of the Census Population Estimates

\*\* Year reported to USPHS

Table 4  
 CHEMICAL AND FEEDER USED IN FLUORIDATING WATER SUPPLY SYSTEMS BY RANGE OF  
 POPULATION SERVED AS OF DECEMBER 31, 1969

Population Size of Water Supply Systems*	Number of Systems Fluoridating	Sodium Fluoride		Sodium Silicofluoride		Fluosiilicic Acid		Ammonium Fluosiilicate		Calcium Fluoride, Adjusted Natural Fluoride, and Not Specified
		Dry	Solution	Dry	Solution	Solution	Dry	Solution	Dry	
Total	2,653	181	571	850	75	752	1	4		219
1,000,000 and Over	6			1		5				
500,000 thru 999,999	18			12		6				
250,000 thru 499,999	18	5	2	5	1	4			1	
100,000 thru 249,999	62	6	3	35	2	16				3
50,000 thru 99,999	78	6	3	55	1	10				4
25,000 thru 49,999	184	21	12	96	9	40	1	1		18
10,000 thru 24,999	398	43	35	203	8	91				18
5,000 thru 9,999	455	43	70	193	14	116		1		18
2,500 thru 4,999	458	33	112	158	15	114		1		25
1,000 thru 2,499	543	22	186	79	17	195		1		43
Under 1,000	396	2	146	11	8	153				76
Not Specified	37		2	2		2				31

\*Population range in terms of 1960 Census

COMMUNITY	DATE	COMMUNITY	DATE
OREGON		PENNSYLVANIA	
ASTORIA	12 52	APPLEWOLD	11 58
AUMSVILLE	10 66	ARMSTRONG TWP	12 66
BONNY SLOPE	6 64	ARNOLD	1 58
CEDAR HILLS	6 64	ASTON TWP	10 68
CEDAR MILL	6 64	BALDWIN	7 58
CHARLESTON	1 57	BEAVER FALLS	5 67
COLLEGE HEIGHTS	3 65	BEDFORD	12 64
COOS BAY	1 57	BELLEFONTE	8 68
COQUILLE	5 54	BENSALEM TWP	1 63
CORVALLIS	6 52	BERN TWP PT 1	10 68
DALLAS	9 56	BETHEL	7 58
EAST SALEM	3 65	BETHEL TWP PT	10 68
EASTSIDE	1 57	BETHLEHEM TWP PT	5 52
EMPIRE	1 57	BIRMINGHAM TWP PT	10 68
FLORENCE	6 52	BLAWNOX BOROUGH	12 52
FOREST GROVE	10 52	BRACKENRIDGE	2 53
GEARHART	7 51	BRADDOCK	1 53
GOLD BEACH	9 63	BRADDOCK HILLS PT	1 53
HAMMOND	1 56	BRENTWOOD	7 58
KEIZER	3 65	BRIDGEVILLE	7 58
MCMINNVILLE	8 61	BRIDGEWTR TWP PT	11 63
MILL CITY	3 54	BROOKHAVEN BORO	10 68
NEWPORT	7 62	BROOKVILLE	9 51
NORTH BEND	1 57	BURGETTSTOWN	5 58
OAK HILLS	6 64	CAMBRIDGE SPRINGS	4 61
ORCHARD HILLS	6 64	CAMP HILL	5 56
PENDLETON	12 52	CARLISLE	11 57
PHILOMATH	6 52	CARNEGIE	7 58
PINELAND TERRACE	6 64	CARRICK BORO	7 58
SALEM	3 65	CASTLE SHANNON	7 58
SHERIDAN	2 66	CATASAUQUA	2 62
SUBLIMITY	7 55	CECIL TWP PART 1	7 58
SWEET HOME	7 65	CECIL TWP PART 2	5 58
THE DALLES	1 57	CHALFANT	1 53
TURNER	3 65	CHAMBERSBURG	12 64
VISTA HILLS	6 64	CHESTER	10 68
WARM SPRINGS	12 61	CHESTER HILL	9 63
WARRENTON	1 56	CHESTER TWP	10 68
WEST HAVEN	6 64	CHIPPEWA TWP	5 67
WOLF CREEK HWY WD	6 64	CHURCHILL	1 53
		CLARION	7 54
		CLARKSVILLE PART	2 64

COMMUNITY	DATE	COMMUNITY	DATE
OHIO			
PARKVIEW	7 56	WILLOUGHBY HILLS	3 57
PARMA	7 56	WILLOWICK	7 56
PARMA HEIGHTS	7 56	WINTERSVILLE	1 69
PEPPER PIKE	7 56	WOODMERE	7 56
PERRYSBURG	12 55	WYOMING	8 53
PORTSMOUTH	11 53	YELLOW SPRINGS	2 59
REYNOLDSBURG	1 64	YOUNGSTOWN	9 52
RICHMOND HEIGHTS	7 56		
ROCKY RIVER	7 56		
ROSSFORD	12 55		
SALEM	12 57		
SEVEN HILLS	7 56		
SHAKER HEIGHTS	7 56		
SHEFFIELD	5 54		
SHEFFIELD LAKE	11 55		
SOLOM	7 56		
SOUTH EUCLID	7 56		
ST CLAIRSVILLE PT	11 69		
STEBENVILLE	3 69		
STOW	1 69		
STRONGSVILLE	7 56		
SUNBURY	2 68		
SYLVANIA	6 67		
TALLMADGE	1 69		
TERRACE PARK	3 61		
TIFFIN	1 66		
TIMBERLAKE	7 56		
TOLEDO	12 55		
TONTOGANY	11 61		
TWINSBURG	7 56		
UNIVERSITY HGTS	7 56		
UPPER SANDUSKY	6 63		
VERMILION	4 59		
VERMILION ON LAKE	4 59		
WADSWORTH	2 64		
WALBRIDGE	12 63		
WALTON HILLS	7 56		
WARRENSVILLE HGTS	7 56		
WATERVILLE	6 62		
WELLINGTON	8 68		
WELLSTON	5 61		
WEST VIEW	7 56		
WESTERVILLE	6 51		
WESTLAKE	7 56		
WICKLIFFE	7 56		
WILLOUGHBY	3 57		
		OKLAHOMA	
		ADA	10 57
		ALTUS	4 54
		ATOKA	4 60
		BARTLESVILLE	7 52
		CLINTON	12 53
		DEWEY	62
		DURANT	10 58
		ENID	12 67
		FAIRVIEW	10 66
		GUTHRIE	11 52
		HYDRO	2 59
		IDABEL	10 58
		KINGFISHER	10 56
		MCALESTER	8 62
		MIDWEST CITY	10 60
		NORMAN	6 66
		NOWATA	8 51
		OKEMAH	3 66
		OKLAHOMA CITY	6 54
		PAWHUSKA	3 58
		PONCA CITY	6 56
		SAND SPRINGS	11 66
		SAPULPA	10 58
		SHAWNEE	1 69
		STILLWATER	8 58
		TAHLEQUAH	7 67
		TULSA	8 53
		OREGON	
		ALBANY	3 69

Table 5  
 UNITED STATES COMMUNITIES USING CONTROLLED FLUORIDATION  
 AS OF DECEMBER 31, 1969

Population Range of Community*	Number of Communities	Communities Using Controlled Fluoridation	Percent of All Communities of Same Size
Total	20,593	4,834	23.5
1,000,000 and Over	5	4	80.0
500,000 thru 999,999	16	11	68.8
250,000 thru 499,999	30	16	53.3
100,000 thru 249,999	81	47	58.0
50,000 thru 99,999	201	109	54.2
25,000 thru 49,999	432	250	57.9
10,000 thru 24,999	1,134	637	56.2
5,000 thru 9,999	1,394	665	47.7
2,500 thru 4,999	2,152	709	32.9
1,000 thru 2,499	4,471	931	20.8
Under 1,000 & not Specified	10,677	1,455	13.6

\*Population range in terms of 1960 Census

Table 6  
 AUTHORIZATION FOR FLUORIDATION IN COMMUNITIES FLUORIDATING  
 DECEMBER 31, 1969

Population Range of Community*	Source of Authority to Fluoridate					Other & not Specified
	Total	Governing Body Alone	Referendum	Utilities Commission		
Total	4,834	3,464	390	175		805
1,000,000 and Over	4	3	1			
500,000 thru 999,999	11	7	4			
250,000 thru 499,999	16	13	1		2	
100,000 thru 249,999	47	36	5	1	5	
50,000 thru 99,999	109	73	20	4	12	
25,000 thru 49,999	250	160	32	5	53	
10,000 thru 24,999	637	433	74	17	113	
5,000 thru 9,999	665	480	63	24	98	
2,500 thru 4,999	709	524	72	21	92	
1,000 thru 2,499	931	706	59	34	132	
Under 1,000	1,019	750	48	39	182	
Not Specified	436	279	11	30	116	

\*Population range in terms of 1960 Census

COMMUNITY	DATE	COMMUNITY	DATE
OHIO			
BAY VILLAGE	7 56	HUDSON	11 69
BEACHWOOD	7 56	HUNTING VALLEY	7 58
BEDFORD	7 56	HURON	7 59
BEDFORD HEIGHTS	7 56	INDEPENDENCE	7 56
BELMONT CO PT	11 69	INDIAN HILL	3 61
BELMONT PT	11 69	IRONTON	4 53
BELPRE	12 66	JACKSON	2 57
BEREA	1 56	LAKELINE	7 56
BOWLING GREEN	11 61	LAKESWOOD	7 56
BRATENAHL	7 56	LINNDALE	7 56
BRECKSVILLE	7 56	LISBON	8 51
BROADVIEW HEIGHTS	7 56	LOGAN	6 63
BROOK PARK	7 56	LORAIN	11 55
BROOKLYN	7 56	LYNDHURST	7 56
BROOKLYN HEIGHTS	7 56	MADEIRA	3 61
BRUNSWICK	7 65	MAPLE HEIGHTS	7 56
CANFIELD	9 52	MARIETTA	8 62
CHESAPEAKE	3 53	MARTINS FERRY	8 52
CHILlicothe	2 69	MAUMEE	11 55
CLEVELAND	7 56	MAYFIELD	7 56
CLEVELAND HEIGHTS	7 56	MAYFIELD HEIGHTS	7 56
COAL GROVE	4 53	MCDONALD	9 52
CUYAHOGA HEIGHTS	7 56	MEDINA	12 53
DEFIANCE	4 64	MENTOR	3 68
EAST CLEVELAND	7 56	MENTOR ON LAKE	3 68
EASTLAKE	7 56	MENTOR TWP	3 68
ELYRIA	5 54	MIDDLEBURG HGTS	7 56
EUCLID	7 56	MOGADORE	1 69
FAIRLAWN	1 69	MONTGOMERY	3 61
FAIRPORT HARBOR	10 64	MORELAND HILLS	7 56
FAIRVIEW PARK	7 56	MORRISTOWN	11 69
FINDLAY	4 57	NEW BOSTON	11 53
GALLIPOLIS	1 65	NEWARK	5 57
GARFIELD HEIGHTS	7 56	NEWBURG HEIGHTS	7 56
GATES MILLS	7 56	NILES	9 52
GEORGETOWN	1 61	NORTH OLMSTEAD	7 56
GIRARD	9 58	NORTH RANDALL	7 56
GLENDALE	12 52	NORTH RIDGEVILLE	1 59
HAMDEN	5 61	NORTH ROYALTON	7 56
HAMERSVILLE	1 64	NORTHFIELD	7 56
HAMILTON	2 53	OAKWOOD VILLAGE	7 56
HARBOR VIEW	12 55	OBERLIN	3 54
HARRISVILLE	10 61	OLMSTED FALLS	7 56
HASKINS	11 61	ORANGE	7 56
HIGHLAND HEIGHTS	7 56	OREGON	12 55
HOLLAND	12 55	ORRVILLE	4 58
		OTTAWA HILLS	12 55

COMMUNITY	DATE
NORTH CAROLINA	
RUTH	8 64
RUTHERFORDTON	8 64
SALISBURY	7 52
SANFORD	10 61
SAW MILLS S DIST	11 52
SELMA	11 65
SHELBY	4 54
SMITHFIELD	10 58
SO CONCORD S DIST	7 52
SOUTHERN PINES	11 52
SPINDALE	8 64
STATESVILLE	9 65
SWANNANOA	9 65
TARBORO	7 58
THOMASVILLE	6 56
W SMITHFIELD DIST	10 58
WADESBORO	2 66
WASHINGTON	4 59
WAYNESVILLE	12 68
WILMINGTON	7 55
WILSON	6 54
WINGATE	12 63
WINSTON SALEM	10 51

COMMUNITY	DATE
NORTH DAKOTA	
ANETA	10 69
ASHLEY	12 65
BELCOURT	63
BEULAH	7 65
BISMARCK	1 55
CANDO	10 68
CARRINGTON	8 65
CASSELTON	5 60
CAVALIER	6 60
COOPERSTOWN	7 58
CROSBY	2 69
DEVILS LAKE	6 64
DICKINSON	7 52
DRAKE	6 68
DRAYTON	9 65
ELLEDALE	4 66
ENDERLIN	11 67

COMMUNITY	DATE
FARGO	5 52
FESSENDEN	3 67
FORT YATES	12 67
FT TOTTEN	4 68
GRAFTON	4 66
GRAND FORKS	9 58
HAZEN	7 66
HILLSBORO	6 60
JAMESTOWN	7 56
LA MOURE	8 66
LAKOTA	12 68
LANGDON	11 65
LARIMORE	5 66
LINTON	8 68
LISBON	12 65
MANDAN	10 52
MAYVILLE	5 68
MCVILLE	9 68
MINOT	4 56
MOHALL	9 68
NECHE	12 66
NEW ROCKFORD	5 68
NEW TOWN	2 66
PARK RIVER	4 66
PARSHALL	9 66
RIVERDALE	3 53
ROCK LAKE	10 68
ROLLA	3 60
RUGBY	11 58
ST THOMAS	9 65
VALLEY CITY	2 58
VELVA	3 63
WALHALLA	12 57
WASHBURN	12 69
WATFORD CITY	3 68
WILLISTON	4 53

COMMUNITY	DATE
OHIO	
AKRON	1 69
AMHERST	5 54
ATHENS-MEIGS PT	12 69
AVON	8 51
AVON LAKE	8 51

Table 7  
NATIONAL SUMMARY OF FLUORIDATION REFERENDA REPORTED  
BETWEEN NOVEMBER 1950 AND DECEMBER 31, 1969

Year	Won	Lost	Total
1950	1	1	2
1951	6	2	8
1952	23	28	51
1953	17	24	41
1954	46	58	104
1955	19	41	60
1956	36	49	85
1957	17	35	52
1958	20	48	68
1959	22	25	47
1960	25	43	68
1961	20	39	59
1962	20	27	47
1963	27	34	61
1964	35	64	99
1965	28	22	50
1966	25	26	51
1967	24	32	56
1968	37	32	69
1969	25	36	61
Total	473	666	1139

COMMUNITY	DATE
NEW YORK	
WHEATFIELD TOWN	7 60
WHITESBORO VILL	5 67
WHITESTOWN TOWN	5 67
WILLIAMSVILLE V P	10 67
WILSON TOWN	7 60
WINCHESTER	10 67
WINDOM ABBOTT WD	10 67
WOLCOTT	11 68
WOODMERE PK WD	10 52
WRIGHTS BEACH ASS	3 61
YONKERS C PT	9 65
YONKERS CITY PT	10 65
YORK TOWN	9 60
YORKTOWN TOWN	5 67
YORKVILLE VILL	5 67
YOUNGSTOWN VILL	2 59

COMMUNITY	DATE
NORTH CAROLINA	
ABERDEEN	9 59
ALBEMARLE	1 54
APEX	8 64
ASHEBORO	9 67
ASHEVILLE	9 65
BOGER CITY SAN D	6 64
BROOKFORD	8 52
CANTON	6 69
CARRBORO	2 64
CARY	3 66
CHAPEL HILL	2 64
CHARLOTTE	4 49
CHEROKEE	2 68
CLYDE	6 69
CONCORD	7 52
CONOVER	3 66
DALLAS	8 64
DUNN	4 53
DURHAM	5 62
EAST LAURINBURG	3 59
EAST LENOIR	11 52
EAST SPENCER	7 52
EDEN	3 63
ELIZABETH CITY	9 60

COMMUNITY	DATE
ERLANGER	7 53
ERWIN	4 53
FAYETTEVILLE	10 52
FLETCHER	9 65
FOREST CITY	5 67
GASTONIA	8 64
GOLDSBORO	2 61
GRANITE QUARRY	9 62
GREENSBORO	5 67
GREENVILLE	11 57
HAZELWOOD	12 68
HICKORY	8 52
HIGH POINT	7 52
HILLSBOROUGH	9 59
JAMESTOWN	2 68
LAKE JUNALUSKA	12 68
LANDIS	4 68
LAURINBURG	3 59
LENOIR	11 52
LEXINGTON	7 53
LILLINGTON	12 64
LINCOLNTON	6 64
LONGHURST	3 63
LOWELL	8 64
LUMBERTON	2 54
MARSHVILLE	9 68
MISENHEINER	7 63
MOCKSVILLE	8 69
MONROE	12 63
MOORESVILLE	2 56
MORGANTON	3 65
MOUNT AIRY	1 57
NEW BERN	5 62
NEW LONDON	7 63
NEWTON	10 61
NORTH WILKESBORO	4 62
PARKWOOD SAN DIST	7 52
PINEVILLE	4 49
RALEIGH	6 57
RANLO	8 64
REIDSVILLE	7 53
RICHFIELD	7 63
ROANOKE RAPIDS	2 52
ROCKINGHAM	12 52
ROCKLAND SAN DIST	7 52
ROCKY MOUNT	12 52
ROXBORO	3 63

COMMUNITY	DATE	COMMUNITY	DATE
NEW YORK			
PERINTON TOWN	3 64	SKANEATELES T PT2	7 65
PERRY TOWN	12 58	SKANEATELES V	5 69
PERRY VILLAGE	12 58	SLOAN VILLAGE PT	10 67
PHELPS VILLAGE PT	2 61	SOMERSET TOWN	7 60
PINE HILL	10 67	SONBARN WD	7 60
PITTSFORD TOWN PT	3 64	SOUTH PARK ESTS	10 52
PLATTSBURGH CITY	10 53	SOUTHPORT TOWN PT	2 53
PLATTSBURGH TOWN	10 53	SPACKENKILL HTS	10 52
PLEASANTVILLE	6 55	STATE CAMPSITE	10 53
PORT CHESTER V	3 67	STATE JACKSON WD	5 64
PORT DICKINSON V	3 64	SYRACUSE CITY	7 65
PORTER T RR WD	2 59	TONAWANDA CITY	8 55
PORTER TOWN	7 60	TONAWANDA TOWN	7 58
POTSDAM VILLAGE	4 67	TOWER DVLPM	10 52
POUGHKEEPSIE CITY	10 52	TROY CITY	1 67
POUGHKEEPSIE TOWN	10 52	TUCKAHOE VILLAGE	10 51
RAVENA V	11 68	UNION HILL WD	5 64
RENSSELAER	1 67	UTICA CITY	5 67
RETSOF WD	9 60	VAIL WD PT	9 55
RICHMONDVILLE	5 67	VALHALLA WD	9 65
RIDGE ROAD WD	7 60	VESTAL TOWN WD6	3 64
RIDGEVIEW V WD	2 59	VOSBURG WD	5 64
RIVER RD WD	2 59	W D NO 3	7 60
RIVERSIDE	10 67	W SENECA PT	10 67
ROCHESTER CITY PT	7 52	WALDEN	10 67
ROCHESTER PT 2	3 64	WALDEN VILLAGE	4 53
ROTTERDAM T PT	5 64	WALL RD WD	5 64
ROYALTON TOWN	7 60	WALNUT HILL WD	10 52
RUSH TOWN PT	7 52	WARSAW TOWN PT	8 60
RYE CITY PT 1	3 67	WARSAW VILLAGE	8 60
RYE CITY PT2	8 59	WATERTOWN CITY	6 62
RYE TOWN PT 2	3 67	WATERTOWN TOWN PT	6 62
S FIVE MILE LN RD	5 64	WD NO 2	10 67
SARANAC LAKE VILL	2 64	WD NOS 1 6 & 12	10 67
SARATOGA SPRINGS	8 62	WD NOS 1-8	10 67
SAUNDERS	7 60	WD NOS 123 & 4	7 60
SCARSDALE V PT	3 66	WD NOS 123468&9	10 67
SCARSDALE VILLAGE	9 57	WD NOS 9 & 10	10 67
SCHENECTADY CITY	5 64	WEBSTER TOWN PT	5 64
SCHROON LAKE	9 68	WEBSTER VILLAGE	5 64
SCOTTSVILLE VILL	3 64	WENDE	10 67
SCRIBA T NRWD	5 60	WEST WTR DIST	5 64
SCRIBA TOWN	5 60	WESTBURY	3 52
SHOECRAFT RD WD	5 64	WESTCHESTER CO	9 65
SHORE HGTS WD PT	9 55	WESTCHESTER JT WW	9 65
SKANEATELES T PT1	5 69	WESTFIELD VILLAGE	8 51
		WESTMORELAND T TC	5 67

**Communities  
Using  
Fluoridated Water**

KEY TO LISTING

- WD . . . . . Water District
- PUD . . . . . Public Utility District
- BLEND . . . . . Two or more water sources containing natural fluorides blended to the optimal concentration
- DEFLUOR . . . . . Defluoridation — removal of excess naturally occurring fluorides
- PT . . . . . Part or parts of a community receiving fluoridated water
- WA . . . . . Water Association
- SUB . . . . . Subdivision
- SD . . . . . Sanitary District
- PWS . . . . . Public Water Supply

COMMUNITY	DATE	COMMUNITY	DATE
NEW YORK			
KENMORE VILLAGE	10 67	MONTICELLO	1 57
KIRKLAND T C M WD	5 67	MORRISTOWN	8 67
KIRKLAND TWD NO4	12 68	MT PLEASANT T PT2	3 66
LACKAWANNA CITY	10 67	MT PLEASANT TOWN	6 55
LAKE RD WD	5 64	MT VERNON	9 65
LAKE RD WD PT2	2 59	N HARTFORD TWMWD	5 67
LAKWOOD VILLAGE	5 63	N ROCHELLE C PT2	8 59
LANCASTER PT	10 67	N ROCHELLE C PT3	9 57
LARCHMONT	2 53	NEW HARTFORD TOWN	5 67
LATTA RD EODY ST	3 64	NEW HARTFORD VILL	5 67
LETCHWORTH ST PK	12 58	NEW ROCHELLE CITY	10 51
LEVITTOWN	1 54	NEW WINDSOR TOWN	5 45
LEWIS DR WD PT	9 55	NEW YORK CITY	9 65
LEWISTON EST WD	2 59	NEW YORK MILLS V	5 67
LEWISTON HTS WD	2 59	NEWARK VILLAGE	2 61
LEWISTON T C H WD	2 59	NEWBURGH CITY	5 45
LEWISTON TUSC	7 60	NEWBURGH TOWN PT	5 45
LEWISTON PT	7 60	NEWFANE TOWN	7 60
LEWISTON VILLAGE	2 59	NIAGARA FALLS	2 59
LINCOLN VILL WD	7 60	NIAGARA MEDOWS WD	7 60
LIVONIA TOWN PT	7 52	NIAGARA TOWN	7 60
LLOYD TOWN PT	2 53	NISKAYUNA TOWN	5 64
LOCKPORT C PT2	7 60	NO PELHAM VILLAGE	10 51
LOCKPORT CITY	1 59	NORTH HEMPSTEAD	3 52
LOCKPORT TOWN	7 60	NORTH TONAWANDA	1 61
LONG MEADOWS WD	3 64	NORTH WATER DIST	5 64
LOWER UTICA ST WD	12 68	NORTHEAST WD	5 64
MACEDON TOWN PT	5 64	NY SCH FOR DEAF	9 65
MACEDON TOWN PT	3 58	OGDEN TOWN PT	8 63
MAMARONECK TOWN	8 59	OGDENSBURG	12 68
MAMARONECK VILL	8 59	OLEAN CITY	11 51
MANCHESTER T PT	2 61	ONEONTA CITY	6 58
MAPLE AVE WD	3 58	ORCHARD PARK PT	10 67
MASSENA TOWN	5 65	ORISKANY VILLAGE	5 67
MASSENA VILLAGE	5 65	OSWEGO CENTER WD	5 60
MEADOWBROOK GREEN	10 67	OSWEGO CITY	5 60
MEDINA	7 60	OSWEGO TOWN	5 60
MENLANDS	1 67	OWEGO TOWN PT	5 65
MIDDLEBURG	12 68	PALMYRA TOWN	3 58
MIDDLEBURG TOWN	12 68	PALMYRA VILLAGE	3 58
MIDDLEPORT VILL	7 60	PARMATOWN	3 61
MINEOLA VILL PT	3 52	PELHAM MANOR VILL	10 51
MINETTO WD	5 60	PELHAM VILLAGE PT	10 51
MOMARONECK T PT	9 57	PENDLETON TOWN	7 60
MONROE AVE WD	3 64	PENFIELD TOWN PT	5 64
MONROE TOWN	3 61	PENFIELD TOWN PT	3 64
		PENN YAN	2 53



COMMUNITY	DATE
NEW YORK	
CHILI T RIVD WD	7 52
CHILI TOWN PT	3 64
CLARENCE PART	10 67
CLEVELAND HILLS	10 67
CLIFTON SPRINGS V	2 61
CLIFTON T NEWTON	1 63
CLINTON VILLAGE	12 68
CLOVER ST WD	3 64
COBLESKILL	11 53
COOPERSTOWN	5 68
COUNCIL ROCKS WD	3 64
CRESTWOOD HTS	10 52
CROWN HTS WD	10 52
CUMBERLAND WD	10 53
DEERFIELD TOWN	5 67
DELHI VILLAGE	1 64
DEPEW VILLAGE PT	10 67
DICKINSON TOWN	3 64
DIVISION ST WD	3 58
DOBBS FERRY	3 66
DOYLE	10 67
DRESDEN	2 53
EAST AURORA VILL	4 59
EAST GREENBUSH	1 67
EAST ROCHESTER	7 58
EASTCHESTER T PT2	9 57
EASTCHESTER TOWN	10 51
EBENEZER	10 67
EGYPT WD	2 57
ELBRIDGE VILLAGE	7 65
ELLICOTT TOWN	6 63
ELMIRA CITY	2 53
ELMIRA HEIGHTS V	2 53
ELMIRA TOWN PT	2 53
ELMSFORD	9 65
ELMWOOD AVE WD	3 64
EMPIRE WD	5 64
ESCARPMENT WD	7 60
EVANS TOWN PT	10 67
FAIRPORT VILLAGE	2 57
FAIRVIEW WD	7 60
FALCONER VILLAGE	6 63
FALLS BROOK WD	7 56
FARMINGTON WD	7 56
FERGUSON DR WD	3 61
FIVE MILE LN RD	5 64

COMMUNITY	DATE
FOREST LAWN WD	5 64
FRANKFORT T WD	5 67
FREEMAN ROAD	10 67
FT SLOCUM DIST	10 51
GARDENVILLE	10 67
GATES TOWN	3 64
GENESEED VILLAGE	9 60
GLOVERSVILLE	4 52
GORGE VIEW PT WD	2 59
GOUVERNEUR	7 68
GRAND ISLAND WD 1	7 60
GRAND ISLAND WD 2	2 67
GREECE TOWN	3 64
GREENBURGH C WD	9 65
GREENBURGH T PT	3 66
HAGAN FARMS WD	10 52
HAMBURG TOWN PT	10 67
HAMBURG VILLAGE	9 55
HARD RD WD	5 64
HARRIETSTOWN TOWN	2 64
HARRISON TOWN PT	8 59
HASTINGS	3 66
HATCH RD WD	5 64
HAWTHORNE WD	9 65
HENRIETTA T ROYAL	7 52
HENRIETTA TOWN	3 64
HIGHLAND	5 54
HIGHLAND WD	3 64
HILTON VILLAGE	3 61
HONEYE F V PT2	7 52
HONEYE FALLS V	8 63
HOOSICK FALLS V	9 52
HOPEWELL TOWN	7 56
HORSEHEADS T PT	1 53
HORSEHEADS T PT 2	2 59
HORSEHEADS VILL	2 59
HUDSON FALLS	10 62
HUFFER RD ZELLWE	3 61
INSPIRATION PT WD	5 64
IRONDEQUOIT TOWN	3 64
JAMESTOWN CITY	6 63
JEFFERSON RD WD	2 57
JERUSALEM	2 53
JOHNSON RD WD	3 58
JOHNSTOWN	4 52
JORDON VILLAGE	7 65
KENMORE VILLAGE	6 55

CONTROLLED FLUORIDATION  
COMMUNITIES USING FLUORIDATED WATER, DECEMBER 31 1969

COMMUNITY	DATE	COMMUNITY	DATE
ALABAMA		JASPER	10 68
ALBERTVILLE	5 57	JOHNSONS CROSSRDS	11 69
ALEXANDER CITY	11 69	LAFAYETTE	4 63
ANNISTON	7 60	LANETT	10 58
ATHENS	2 62	LANGDALE	10 58
AUBURN	6 60	LIVINGSTON	10 55
BARTON	5 69	MACEDONIA	3 67
BOAZ	7 62	MOBILE	7 58
BYNUM	10 67	MONTEVALLO	5 63
CARRVILLE	2 67	NORTHPORT	7 51
CHEHAW	2 67	OAKLAND	9 69
CHEROKEE	5 67	ONEONTA	2 62
CHISHOLM HTS	6 68	OPELIKA	7 58
CLOVERDALE	9 69	OXFORD	7 60
CORDOVA	10 68	OZARK	8 60
CULLMAN	11 67	PARRISH	10 68
DADEVILLE	12 67	RAINSVILLE	3 63
DECATUR	4 66	RIVER VIEW	10 58
DOTHAN	4 59	RUSSELLVILLE	5 60
DOVERTOWN BORDEN	10 68	SARDIS CITY	11 69
DUTTON	4 65	SCOTTSBORD	7 61
EAST TALLASSEE	2 67	SECTION	3 63
EVERGREEN	5 64	SHAWMUT	10 58
FAIRFAX	10 58	SHEFFIELD	12 52
FAYETTE	2 57	SYLVANIA	4 65
FISHER CROSSROADS	10 67	TALLAPOOSA CITY	2 67
FLORENCE	7 65	TALLASSEE	2 67
FOLEY	10 63	TALLAWEKA	2 67
FORT PAYNE	2 64	TRUSSVILLE	7 60
FYFFE	3 63	TUSCALOOSA	7 51
GERALDINE	3 63	TUSCUMBIA	6 63
GORDO	2 65	TUSKEGEE	2 67
GUNTERSVILLE	11 60	WACO	10 66
HEADLAND	11 68	WARRIOR	10 62
HENAGAR	4 65	WHITEPIKE	9 69
HOLT	7 51	YORK	1 59
HUGULEY	10 67	ALASKA	
HUNTSVILLE	9 59	ANCHORAGE	11 53
ISBELL	10 67		
JACKSONS GAP	9 69		
JACKSONVILLE	6 63		

COMMUNITY	DATE
ALASKA	
ANGOON	11 69
DOUGLAS	9 64
FAIRBANKS	8 62
HOONAH	66
METLAKATLA	63
MT EDGECUMBE	3 63
OLD HARBOR	4 69
OUZINKIE	12 69
PORT LIONS	2 68
SITKA	3 63

COMMUNITY	DATE
ARIZONA	
CASSA GRANDE	
KAYENTA	1 69
MARENCCI	

COMMUNITY	DATE
ARKANSAS	
ALEXANDER	6 59
ARKADELPHIA	6 53
BALD KNOB	12 53
BATESVILLE	3 56
BEEBE	4 69
BENTON	2 59
BENTONVILLE	3 55
BLYTHEVILLE	2 68
CALDWELL	10 66
CAMDEN	7 53
CAMMACK VILLAGE	3 51
CENTER HILL	2 58
CLARKSVILLE	6 55
COLLEGE STA PT	6 53
CONWAY	6 68
CROSSETT	11 58
DERMOTT	10 66
DEWITT	6 62
DIXIE ACRES	6 55
DUMAS	9 60
EDEN ISLE	1 60

COMMUNITY	DATE
EUDORA	10 62
FORREST CITY	3 55
GEYER SPRINGS	3 51
GRAVEL RIDGE	4 51
GURDON BLEND	52
HARDING	3 69
HARRISON	5 54
HEBER SPRINGS	1 60
HELENA	11 54
HOPE BLEND	53
JACKSONVILLE	6 61
JONESBORO	10 51
JUDSONIA	12 53
LAKE VILLAGE	8 68
LAMAR	4 56
LEWISVILLE	1 53
LITTLE ROCK	4 51
MABELVALE	4 51
MADISON	12 61
MALVERN	4 59
MAMMOTH SPRING	12 66
MARIANNA	10 54
MCCRORY	2 62
MCRAE T B SAN	4 51
MITCHELLVILLE	9 67
MONTICELLO	9 65
MORRILTON	2 60
MOUNTAIN HOME	3 55
NEWPORT	7 54
NORTH LITTLE ROCK	4 51
OAKHAVEN BLEND	9 64
OKAY BLEND	12 60
OSCEOLA	4 65
PARAGOULD	2 56
PATTERSON	5 65
PINE BLUFF	3 69
POCAHONTAS	8 67
PRESCOTT BLEND	53
PULASKI COUNTY PT	1 53
RUSSELLVILLE	2 60
SALEM	5 65
SEARCY	12 53
SHERWOOD	4 51
SPARKMAN BLEND	3 64
SPRINGDALE	11 52
STAR CITY	2 60
STUTTGART	2 69

COMMUNITY	DATE
NEW MEXICO	
ABIQUIU	5 62
AGUA FRIA	6 61
ANTON CHICO	4 62
BLOOMFIELD	10 65
BUENA VISTA	10 67
CANJILON	3 66
CANON	4 62
CAPULIN	5 62
CHAMISAL	6 69
CLEVELAND	2 62
CORDOVA	6 61
COYOTE	3 66
CUNDIYO	12 61
EAST GLORIETA	6 61
EAST PECOS	6 61
EL RITO	6 62
ENSENADA	6 62
FARMINGTON	12 65
GLORIETA	6 61
LA PLACITA	12 61
LAS VEGAS CITY	9 60
LAS VEGAS TOWN	9 60
LLANO SAN JUAN	4 62
MORA	12 66
PARK VIEW	10 66
PECOS	5 66
PENASCO	12 61
RATON	4 56
RIO LUCIO	9 61
RODARTE	12 61
RUIDOSO	12 63
SANTA FE	6 56
SANTA ROSA	7 66
SENA	12 61
SHIPROCK	65
TAOS	3 59
TECOLOTE	12 61
VADITO	7 61
VALDEZ	12 61
VALLEY RANCH	6 61
VILLANUEVA	6 66
WAGON MOUND	6 62

COMMUNITY	DATE
NEW YORK	
ABBOTT HIGH WD	10 67
ALBION VILLAGE	7 67
ALDEN TOWN PT	10 67
ALLEGANY TOWN WD1	11 51
AMHERST TOWN PT	10 67
ARDSLEY	3 66
AURORA DIST NO 1	4 59
BARKER VILLAGE	7 60
BATAVIA CITY	12 63
BATAVIA TOWN	12 63
BELFAST TOWN	8 64
BELLEVUE	10 67
BELMONT COLLEGE	10 53
BINGHAMTON CITY	3 64
BINGHAMTON TOWN	3 64
BLASDELL VILL PT	10 67
BOLDEN CENTER WD	7 60
BOWMANVILLE WD1	10 67
BRADLEY V WD	10 52
BRIGHTON T PT2	7 52
BRIGHTON TOWN	3 64
BRONXVILLE VILL	10 51
BROWNCOFT WD	3 64
BRUNSWICK	1 67
BUFFALO	6 55
BURKE	10 67
BUSHNELL BASIN WD	2 57
BUSTI TOWN	5 63
CANANDAIGUA CITY	7 56
CANANDAIGUA TOWN	7 56
CARLE PL WD NHMS	3 52
CARTHAGE TOWN	3 66
CARTHAGE VILLAGE	3 66
CASTILE T SL IWD	12 58
CASTILE TOWN	12 58
CEDAR KNOLLS	9 65
CELORON VILLAGE	6 63
CENTRAL HAMBURG	10 67
CHARLOTTE VILLAGE	3 64
CHEEKTOWAGA T PT	10 67
CHENANGO TOWN	3 64
CHESTNUT RIDGE	10 67

COMMUNITY	DATE
NEBRASKA	
BEATRICE ST HOME	12 65
BELLEVUE	12 66
COLUMBUS	10 61
FAIRBURY	1 52
NEBRASKA CITY	9 52
NELIGH	10 65
OMAHA	1 69
RUSHVILLE	9 65
SUPERIOR	7 51
UTICA	7 67

COMMUNITY	DATE
NEVADA	
LOVELOCK	7 67
OWYHEE	5 64

COMMUNITY	DATE
NEW HAMPSHIRE	
BERLIN	12 65
CASCADE	12 65
DURHAM	8 55
GROVETON	11 68
HANOVER	11 58
LANCASTER	12 65
LEBANON	11 56

COMMUNITY	DATE
NEW JERSEY	
ALLENHURST	7 54
ALLENTOWN BOROUGH	4 65
ANDOVER TWP PT1	1 69
ASBURY PARK PT 1	6 53
ATLANTIC CITY	3 58
BEACH HAVEN BORO	3 64
BEDMINSTER TWP PT	6 56

COMMUNITY	DATE
BRADLEY BEACH	3 53
BURLINGTON	6 65
CHESTER TWP PART	6 56
DEAL	3 53
E BRUNSWICK TWP	12 54
EATONTOWN	3 53
EGG HARBOR CITY	12 57
EWING TOWNSHIP	5 64
FAIR HAVEN	3 53
FAR HILLS PT	6 56
HAMILTON TWP PT	5 64
HIGHLAND PARK	2 61
HIGHTSTOWN	11 68
INTERLAKEN	3 53
LAFAYETTE TWP PT1	1 69
LAWRENCE TOWNSHIP	5 64
LITTLE SILVER	3 53
LOCH ARBOUR VILL	3 53
LONG BRANCH	3 53
MIDDLETOWN TWP	3 53
MONMOUTH BEACH	3 53
MT LAUREL TOWN	1 65
NEPTUNE CITY	3 53
NEPTUNE TOWNSHIP	3 53
NEW SHREWSBURY	3 53
NEWTON	1 69
OCEAN GROVE	3 53
OCEAN TOWNSHIP	3 53
OCEANPORT	3 53
PEAPACK GLADSTONE	6 56
PERTH AMBOY	10 60
PRINCETON	12 65
RAHWAY	7 52
ROOSEVELT	3 58
RUMSON	3 53
SEA BRIGHT	3 53
SHREWSBURY BORO	3 53
SHREWSBURY TWP	3 53
SPARTA TWP PT	1 69
TRENTON	5 64
WEST LONG BRANCH	3 53
WHARTON	9 64
WILLINGBORO	5 63
WOODBRIIDGE	10 60

COMMUNITY	DATE
ARKANSAS	
SWEET HOME	4 51
SYLVAN HILLS	4 51
TRUMANN	6 62
TYRONZA	9 67
WALDO BLEND	50
WALNUT RIDGE	1 52
WARREN	10 62
WEST HELENA	9 54
WEST MEMPHIS	4 62
WRIGHTSVILLE	5 64
WYNNE	3 55
YELLVILLE	4 64

COMMUNITY	DATE
CALIFORNIA	
ANTIOCH	8 52
ARCATA	1 64
AVENAL	11 59
BAYWOOD PARK	7 55
BRISBANE	7 55
BROADMOOR	7 55
BURLINGAME	7 55
CLAYTON	5 65
COLMA	7 55
CONCORD	5 65
CRESCENT CITY	1 69
CROCKETT	5 65
DALY CITY	8 62
DIMOND-P U D	8 52
FAIRFIELD	12 67
FOSTER CITY	4 62
FRESNO WTR DIS 11	9 54
FRESNO WTR DIS 19	10 63
GRIDLEY	5 54
HAYWARD	3 58
HEALDSBURG	1 53
HILLSBOROUGH	7 55
LOS BANOS	3 58
LOYALTON	5 68
MARTINEZ	1 65
MERCED	6 66
MILLBRAE	7 55
MORGAN HILL	11 56

COMMUNITY	DATE
MOUNTAIN VIEW	5 65
OROVILLE	4 58
PACHECO	5 65
PACIFICA	8 52
PALO ALTO	6 56
PITTSBURG	4 65
PLACERVILLE	10 56
PLEASANT HILL	2 55
PLEASANTON	3 54
PORT CHICAGO	5 65
PORT COSTA	5 65
ROSEMONT	2 56
ROSEVILLE	10 67
S JOSE EVERGREEN	9 65
SAN BRUNO	7 55
SAN CARLOS	7 55
SAN FRANCISCO	8 52
SAN LUIS OBISPO	8 54
SAN MATEO	7 55
SCOTIA	67
SO SAN FRANCISCO	7 55
UNIV PORTAL 1306	10 68
VALLEJO	11 54
VINE HILL	5 65
YREKA	6 69

COMMUNITY	DATE
COLORADO	
ARVADA	12 68
AURORA	5 54
BALD MT DIST	10 69
BERTHOUD	6 60
BOW MAR	5 54
BROOMFIELD HTS	9 68
CHERRY HILLS VILL	5 54
CRAIG	4 53
DEL NORTE	62
DENVER	5 54
DURANGO	5 57
EDGEWATER	5 54
EVANS	3 55
FORT COLLINS	4 67
GRAND JUNCTION	7 51
GREELEY	3 55

COMMUNITY	DATE
COLORADO	
GREENWOOD VILLAGE	5 54
HAYDEN	60
JOHNSTOWN	6 68
LAFAYETTE	8 52
LAKESWOOD	5 54
LITTLE THOMPSON	1 68
LITTLETON	5 54
LONGMONT	9 58
LONGS PEAK WD	8 67
LOUISVILLE	4 53
LOVELAND	6 54
MINTURN	65
MONTE VISTA	7 60
MONTROSE	4 53
MOUNTAIN VIEW	5 54
PALISADE	63
RANGELY	8 69
RIFLE	6 56
SHERIDAN	5 54
STEAMBOAT SPRINGS	7 65
TIMNATH	3 55
UTE W. D.	8 64
WALDEN	9 58
WALSENBURG	10 69
WHEAT RIDGE	5 54
WINDSOR	3 55

COMMUNITY	DATE
CONNECTICUT	
BERLIN	12 50
BETHANY	2 67
BLOOMFIELD	1 60
BRANFORD	2 67
BRIDGEPORT	2 67
BRISTOL	7 60
CHESHIRE	2 67
CLINTON	11 67
CROMWELL	6 51
DANBURY	9 68
DARIEN	3 67
EAST HARTFORD	1 60
EAST HAVEN	2 67
EAST WINDSOR PT	11 67

COMMUNITY	DATE
EASTON	2 67
ELLINGTON PT	11 67
ENFIELD PT	11 67
FAIRFIELD	2 67
GLASTONBURY	1 60
GREENWICH	3 67
GROTON	1 68
GUILFORD	11 67
HAMDEN	2 67
HARTFORD	1 60
MADISON	11 67
MANCHESTER	8 68
MANSFIELD ST SCH	11 50
MERIDEN	9 68
MIDDLETOWN	10 60
MILFORD	2 67
MONROE	2 67
MYSTIC	4 53
NEW BRITAIN	12 50
NEW CANAAN	7 58
NEW HAVEN	2 67
NEW LONDON	6 68
NEWINGTON	1 60
NORTH BRANFORD	2 67
NORTH HAVEN	2 67
NORWALK PT 1	12 67
NORWALK PT 2	6 68
NORWICH	3 69
OLD SAYBROOK	11 67
ORANGE	2 67
ROCKY HILL	1 60
SHELTON	2 67
SOUTH WINDSOR	1 60
SOUTHURY TR SCH	4 45
SOUTHINGTON	9 68
STAMFORD PT	3 67
STONINGTON BORO	4 53
STONINGTON TOWN	4 53
STRATFORD	2 67
SUFFIELD	11 66
TORRINGTON	3 58
TRUMBULL	2 67
VERNON	11 67
WATERBURY	2 68
WATERFORD	6 68
WATERTOWN	2 68
WEST HARTFORD	1 60

COMMUNITY	DATE
MISSOURI	
MARLBOROUGH	1 63
MARVIN TERRACE	1 63
MARY RIDGE	1 63
MARYVILLE	3 65
MAYSVILLE	6 66
MEADOWBROOK DOWNS	1 63
MOBERLY	12 68
MOLINE ACRES	1 63
NORMANDY	1 63
NORTHWOODS	1 63
NORWOOD COURT	1 63
OAKLAND	1 63
OLIVETTE	1 63
OVERLAND	1 63
PACIFIC	1 63
PAGEDALE	1 63
PASADENA HILLS	1 63
PASADENA PARK	1 63
PEERLESS PARK	1 63
PERRYVILLE	9 59
PINE LAWN	1 63
PLATTE CITY	6 58
PLATTSBURG	10 60
RICHLAND	5 54
RICHMOND HEIGHTS	1 63
RIVERVIEW	1 63
ROCK HILL	1 63
ROLLA	11 68
SALISBURY	8 61
SARCOXIE	1 58
SAVANNAH	5 63
SCHUERMANN HEIGHT	1 63
SCOTT CITY	5 67
SHELBINA	3 65
SHREWSBURY	1 63
SIKESTON	10 55
SLATER	9 56
ST ANN	1 63
ST GEORGE	1 63
ST JOHN	1 63
ST LOUIS	9 55
SUNSET HILLS	1 63
SYCAMORE HILLS	1 63
TIMES BEACH	1 63
TOWN AND COUNTRY	1 63
TRENTON	12 65

COMMUNITY	DATE
TWIN OAKS	1 63
UNIONVILLE	3 64
UNIVERSITY CITY	1 63
UPLANDS PARK	1 63
VALLEY PARK	1 63
VELDA VILL HILLS	1 63
VELDA VILLAGE	1 63
VERSAILLES	1 63
VINITA PARK	1 63
VINITA TERRACE	1 63
WARSON WOODS	1 63
WEBSTER GROVES	1 63
WELLSTON	1 63
WESTWOOD	1 63
WILBUR PARK	1 63
WINCHESTER	1 63
WOODSON TERRACE	1 63

COMMUNITY	DATE
MONTANA	
BOULDER RVR SCH	4 69
BOZEMAN	7 53
BROWNING	8 68
BUSBY	9 68
CHESTER	11 69
CONRAD	8 62
DARBY	2 69
ELMO	9 67
GILDFORD	11 69
HINGHAM	11 69
INVERNESS	11 69
JOPLIN	11 69
KREMLIN	11 69
LAUREL	1 58
MILES CITY	7 55
ROUNDUP	2 52
RUDYARD	11 69
ST IGNATIUS	8 66
TWIN BRIDGES CHIL	4 69
WHITE SULPHUR SPS	

COMMUNITY	DATE
MISSOURI	
ALBANY	9 64
APPLETON CITY	9 63
ARBOR TERRACE	1 63
BALLWIN	1 63
BEL NOR	1 63
BEL RIDGE	1 63
BELLA VILLA	1 63
BELLEFONTAINE	1 63
BELLERIVE	1 63
BERDELL HILLS	1 63
BERKELEY	1 63
BEVERLY HILLS	1 63
BEVIER	11 59
BOONVILLE	11 58
BOWLING GREEN	12 58
BRECKENRIDGE HILL	1 63
BRENTWOOD	1 63
BRIDGETON	1 63
BRIDGETON TERRACE	1 63
BROOKFIELD	10 60
CABOOL	3 62
CALVERTON PARK	1 63
CAMERON	7 64
CAPE GIRARDEAU	4 55
CARTHAGE	5 55
CARUTHERSVILLE	3 57
CHAFFEE	7 64
CHAMP	1 63
CHARLACK	1 63
CHILLICOTHE	9 59
CLARKSON VALLEY	1 63
CLAYTON	1 63
CLINTON	1 63
COOL VALLEY	1 63
COUNTRY CLUB HILL	1 63
COUNTRY LIFE ACRE	1 63
CRESTWOOD	1 63
CREVE COEUR	1 63
CRYSTAL CITY	6 59
CRYSTAL LAKE PARK	1 63
DELLWOOD	1 63
DES PERES	1 63
DEXTER	6 64
EDMUNDSON	1 63

COMMUNITY	DATE
ELLISVILLE	1 63
ELMDALE	1 63
EUREKA	1 63
FENTON	1 63
FERGUSON	1 63
FESTUS	9 56
FLORDELL HILLS	1 63
FLORISSANT	1 63
FREDERICKTOWN	2 57
FRONTENAC	1 63
GILLIAM	9 56
GLASGOW	3 61
GLEN ECHO PARK	1 63
GLENDALE	1 63
GOODFELLOW TERR	1 63
GRANTWOOD VILLAGE	1 63
GREENDALE	1 63
HANLEY HILLS	1 63
HANNIBAL	12 55
HAYTI	8 63
HAZELWOOD	1 63
HILLHOUSE	5 54
HILLSDALE	1 63
HUNTLEIGH	1 63
ILLMO	1 64
IRONTON	9 69
JACKSON	7 56
JEFFERSON CITY	12 63
JEFFERSON CO PWD1	59
JEFFERSON CO PWD2	66
JEFFERSON CO PWD3	66
JENNINGS	1 63
KENNETT	6 55
KINLOCH	1 63
KIRKWOOD	7 57
LADUE	1 63
LAKESHIRE	1 63
LAMAR	7 60
LIBERTY	5 55
LOUISIANA	2 62
MACKENZIE	1 63
MACON	3 55
MANCHESTER	1 63
MANSFIELD	8 68
MAPLEWOOD	1 63
MARCELINE	7 63
MARGONA VILLAGE	1 63

COMMUNITY	DATE
CONNECTICUT	
WEST HAVEN	2 67
WEST MYSTIC	4 53
WESTBROOK	11 67
WESTON	2 67
WESTPORT	2 67
WETHERSFIELD	1 60
WILLIMANTIC	9 58
WILTON	2 67
WINDSOR	1 60
WINDSOR LOCKS	11 67
WOODBIDGE	2 67
DELAWARE	
LEWES	2 64
NEWARK	11 50
SELBYVILLE	5 56
WILMINGTON	1 60
DIST COLUMBIA	
WASHINGTON D C	6 52
FLORIDA	
BAL HARBOR	4 52
BAY HARBOR ISLAND	4 52
BELLE GLADE	2 56
BIG PINE KEY	1 63
BISCAYNE PARK	3 69
CANOVA BEACH	11 66
CHOSEN	2 56
CLEWISTON	10 51
COCOA	10 55
COCOA BEACH	11 55
CORAL GABLES	4 52
CRAIG	1 63

COMMUNITY	DATE
DAYTONA BEACH	6 66
DAYTONA BEACH SH	6 66
DUCK KEY	1 63
EAST NAPLES	59
EAU GALLIE	6 67
EL PORTAL	4 52
FORT PIERCE	6 63
GAINESVILLE	10 49
GREYHOUND KEY	1 63
HARLEM	10 51
HIALEAH	4 52
HIALEAH GARDENS	4 52
HOOKEYS POINT	10 51
INDIALANTIC	11 66
INDIAN CREEK VILL	4 52
INDIAN HAR BEACH	11 66
ISLAMORADA	1 63
KENDALL	
KEY BISCAYNE	4 52
KEY COLONY BEACH	1 63
KEY LARGO	1 63
LELY ESTATES	68
MARATHON	1 63
MEDLEY	11 64
MELBOURNE	11 66
MELBOURNE BEACH	11 66
MERRITT ISLAND	11 55
MIAMI	4 52
MIAMI BEACH	4 52
MIAMI SHORES	4 52
MIAMI SPRINGS	4 52
NAPLES	8 54
NAPLES PARK	67
NORTH BAY VILLAGE	4 52
NORTH MIAMI	3 69
NORTH NAPLES	58
OCALA	11 56
ORLANDO	11 56
ORMOND BEACH	8 61
ORMOND BY THE SEA	8 61
PALATKA	10 64
PALM BAY	11 66
ROCKLEDGE	11 55
S DAYTONA BEACH	6 66
SANFORD	1 66
SATELLITE BEACH	11 66
SOUTH MIAMI	4 52

COMMUNITY	DATE
FLORIDA	
SUGAR LOAF SHORES	1 63
SUMMERLAND KEY	1 63
SURFSIDE	4 52
SWEETWATER	5 61
TAVERNIER	1 63
VALHALLA	1 63
VANDERBILT BEACH	67
VIRGINIA GARDENS	4 52
WEST MELBOURNE	11 66
WEST MIAMI	4 52

COMMUNITY	DATE
GEORGIA	
ACWORTH	6 54
ALBANY	9 53
ALDORA	5 55
ALPHARETTA	2 69
ATHENS	5 51
ATLANTA	7 69
AUGUSTA	7 55
AUSTELL	4 62
AVONDALE ESTATES	4 51
BARNESVILLE	5 55
BATTEY ST HOSP	6 52
BLAKELY	10 65
BLANDVILLA	4 56
BOGART	5 51
BUFORD	11 68
CALHOUN	8 57
CAMILLA	1 66
CANTON	5 56
CANTON COTTON MIL	11 64
CARTERSVILLE	4 56
CATOOSA COUNTY PT	9 52
CELENESE VILLAGE	6 52
CHAMBLEE	4 51
CHATTANOOGA VAL	9 52
CHICOPEE	6 52
CLARKDALE	4 62
CLARKESVILLE	5 64
CLAYTON COUNTY PT	8 65
CLERMONT	6 52
COBB COUNTY PT	6 54

COMMUNITY	DATE
COHUTTA	4 67
CONYERS	12 63
CORDELE	4 56
CORNELIA	10 57
COVINGTON	5 60
CUMMING	8 59
DALTON	4 67
DAWNVILLE	4 67
DECATUR	4 51
DEKALB CO PT	4 51
DONALSONVILLE	11 64
DORAVILLE	4 51
DOUGLAS	12 63
DUBLIN	2 60
EAST GRIFFIN	10 54
EASTMAN	11 56
EATONTON	2 60
ELBERTON	12 57
ELIZABETH	6 54
ELLENWOOD	8 65
EXPERIMENT	10 54
FAIRBURN	2 69
FAIRVIEW	9 52
FITZGERALD	6 57
FLOYD COUNTY PT	6 52
FOREST PARK	7 69
FORSYTH	6 57
FORT VALLEY	6 55
GAINESVILLE	6 52
GARDEN LAKES	6 52
GRACEWOOD ST HOSP	12 61
GRIFFIN	10 54
HAPEVILLE	7 69
HARDWICK	11 64
HARTWELL	7 65
HEBARDVILLE	1 55
HIGH POINT	9 52
HOGANSVILLE	9 55
HOLLY SPRINGS	5 56
HULL	5 51
JONESBORO PT	8 65
KENNESAW	6 54
LAFAYETTE	2 60
LAGRANGE	4 56
LAKEVIEW	9 52
LAVONIA	12 68

COMMUNITY	DATE
MINNESOTA	
RENVILLE	9 68
RICHFIELD	1 64
ROBBINSDALE	5 64
ROCHESTER	3 60
ROCKFORD	4 69
ROSEAU	63
ROSEMOUNT	6 67
ROSEVILLE	9 52
RUSH CITY	10 52
S INTERNATL FALLS	9 52
SAUK CENTRE	12 57
SCANLON	2 53
SHAKOPEE	11 66
SILVER BAY	10 58
SLAYTON	11 56
SLEEPY EYE	6 67
SPRING GROVE	9 68
SPRING LAKE PARK	6 66
SPRING VALLEY	11 65
SPRINGFIELD	10 64
ST ANTHONY	4 65
ST CHARLES	11 62
ST CLAIR	8 67
ST CLOUD	9 57
ST JAMES	8 65
ST JOSEPH	12 59
ST LOUIS PARK	2 61
ST PAUL	9 52
STAPLES	4 52
STEWARTVILLE	11 66
THIEF RIVER FALLS	9 51
TRACY	12 67
TRUMAN	6 56
TWIN LAKES	3 69
TWO HARBORS	9 61
VIRGINIA	8 64
WADENA	10 62
WASECA	1 67
WATERVILLE	5 64
WAYZATA	1 62
WELLS	4 67
WEST CONCORD	9 51
WEST ST PAUL	9 52
WHITE BEAR LAKE	6 57
WILLMAR	3 67
WINDOM	2 60

COMMUNITY	DATE
WINNEBAGO	6 51
WINONA	8 65
WINTHROP	9 68
MISSISSIPPI	
BROOKHAVEN	8 65
CALHOUN CITY	11 54
CANTON	7 65
CARTHAGE	7 62
CLEVELAND	3 63
COLLINS	10 66
COLUMBIA	1 55
COLUMBUS	8 51
COMO	4 58
CORINTH	10 61
DURANT	5 64
FLORA	6 62
FOREST	2 52
FULTON	9 66
HOLLY HILLS	10 65
HOLLY SPRINGS	5 69
IUKA	4 67
JACKSON	4 69
KOSCIUSKO	2 55
LAUREL	5 65
LEXINGTON	1 61
LOUISVILLE	3 59
MARKS	3 56
MENDENHALL	9 65
MERIDIAN	6 53
NEW ALBANY	3 58
NEWTON	9 54
OXFORD	6 69
PHILADELPHIA	5 62
QUITMAN	11 61
SARDIS	3 68
TUPELO	2 63
UNION	7 63

COMMUNITY	DATE
MINNESOTA	
EAST GRAND FORKS	6 66
EDGERTON	10 58
EDINA	4 57
ELK RIVER	2 55
ELLENDALE	2 68
ELY	1 52
EXCELSIOR	6 63
FAIRFAX	1 67
FAIRMONT	2 51
FALCON HEIGHTS	9 52
FARMINGTON	10 68
FERGUS FALLS	5 51
FOLEY	3 60
FOREST LAKE	1 61
FRIDLEY	61
FULDA	5 62
GAYLORD	3 65
GILBERT	2 67
GOLDEN VALLEY	8 57
GRAND MEADOW	12 67
GRANITE FALLS	12 51
HALLOCK	12 51
HAMBURG	9 68
HANCOCK	5 67
HARMONY	5 67
HASTINGS	12 67
HAWLEY	7 66
HENDRICKS	7 64
HILLTOP	8 57
HINCKLEY	9 68
HOPKINS	11 62
HOWARD LAKE	5 69
HOYT LAKES	3 61
HUTCHINSON	2 52
INTERNATL FALLS	9 52
IONA	4 69
JORDAN	5 65
KASSON	2 68
KELLIHER	5 69
LAKE CRYSTAL	12 67
LAKEFIELD	10 59
LAMBERTON	6 69
LAUDERDALE	59
LEBANON TWP PT	6 67
LEXINGTON	2 67
LITCHFIELD	5 59

COMMUNITY	DATE
LONG LAKE	9 59
LUVERNE	2 68
MADELIA	6 66
MADISON	1 53
MANKATO	7 62
MAPLETON	9 52
MAPLEWOOD	63
MARSHALL	1 63
MENDOTA HEIGHTS	9 52
MILACA	8 68
MINNEAPOLIS	8 57
MONTEVIDEO	10 51
MOORHEAD	12 65
MORA	5 52
MORGAN	12 67
MORNINGSIDE	8 57
MORRIS	11 52
MOUND	11 67
MOUNTAIN LAKE	12 64
NEW BRIGHTON	3 68
NEW HOPE	8 64
NEW ULM	1 68
NEW YORK MILLS	8 52
NORTH MANKATO	12 66
NORTH REDWOOD	10 60
NORTHFIELD	2 63
OAK PARK HGTS	5 68
OGILVIE	1 69
OLIVIA	6 60
ONAMIA	5 69
ORTONVILLE	1 58
OSAKIS	2 67
OWATONNA	12 67
PAYNESVILLE	12 65
PELICAN RAPIDS	4 62
PERHAM	5 53
PINE CITY	2 67
PINE ISLAND	9 62
PIPESTONE	4 62
PRESTON	4 66
PRINCETON	10 66
PRIOR LAKE	8 69
RANIER	9 52
RAYMOND	3 69
RED LAKE	12 65
RED LAKE FALLS	4 51
REDWOOD FALLS	4 59

COMMUNITY	DATE
GEORGIA	
LINWOOD	2 60
MADISON	2 64
MANCHESTER	4 60
MARIETTA	6 54
MARTHA MILLS	7 61
MILLEDGEVILLE	11 64
MILSTEAD	12 63
MONROE	8 52
MONTEZUMA	3 60
MONTICELLO	5 59
MORROW	8 65
MOUNT AIRY	10 57
MOUNT BERRY	4 68
MOUNTAIN PARK	6 54
MOUNTAIN VIEW	8 65
NAOMI	2 60
NEWMAN	7 58
NOBLE	2 60
NORTH CANTON	5 56
OAKWOOD	6 52
OXFORD	5 60
PERRY	1 58
PINE LAKE	4 51
PLAINVILLE	8 57
POWDER SPRINGS	6 54
PRINCETON	5 51
RED OAK	2 69
RESACA	8 57
REST HAVEN	4 60
REX	8 65
REYNOLDS	11 64
RICHMOND CO PT	12 62
RIVERDALE	8 65
ROCHELLE	3 66
ROCK SPRING	2 60
ROCKY FACE	4 67
ROME	6 52
ROSSVILLE	9 52
ROSWELL	4 69
ROYSTON	10 65
SANDY SPRINGS	2 69
SCOTTDAL	4 51
SHANNON	7 57
SMYRNA	6 54
SPRING PLACE	4 67
STATESBORO	10 55

COMMUNITY	DATE
STOCKBRIDGE	8 65
SUGAR VALLEY	8 57
SYLVESTER	1 64
THOMASTON	6 61
THOMASVILLE	11 54
TOCCOA	5 61
TUCKER	4 51
TUNNEL HILL	4 67
UNION CITY	2 69
VALDOSTA	4 54
VARNELL	4 67
WALESKA	5 56
WALLACEVILLE	9 52
WARM SPRINGS	10 62
WARNER ROBINS	11 62
WAY CROSS	1 55
WAYNESBORO	3 63
WEST POINT	4 57
WHITEHALL	5 51
WINTERVILLE	5 51
WOODSTOCK	6 54

HAWAII

MAUNALOA MOLOKAI	9 61
------------------	------

IDAHO

BONNERS FERRY	3 52
COUNCIL	1 54
JEROME	7 58
KOOTENAI	4 52
LEWISTON	6 47
MCCALL	68
MERIDIAN	12 54
MONTEPELIER	55
OROFINO	4 54
PONDERAY	4 52
PRESTON	1 52
SALMON	9 52
SANDPOINT	4 52

COMMUNITY	DATE
IDAHO	
SHOSHONE	7 55
ILLINOIS	
ALBANY	5 68
ALBION	1 68
ALLERTON	5 68
ALORTON	8 68
ALSIP	5 56
ALTO PASS	3 67
ALTON	10 68
AMBOY	6 60
APPLE ORCHARD SUB	12 68
ARGENTA	6 68
ARLINGTON	2 69
AROMA PARK	6 68
ARTHUR	4 68
ASHLAND	7 67
ASHMORE	3 69
ASSUMPTION	8 53
AUBURN	7 68
AUGUSTA	8 68
AVISTON	7 67
BANNOCKBURN	12 55
BARRINGTON	10 67
BARTLETT	10 67
BARTONVILLE	10 58
BEARDSTOWN	6 68
BECKEMEYER	6 52
BEDFORD PARK	5 56
BELGIUM	12 55
BELLEVILLE	8 68
BELLEVUE	10 58
BERKLEY	8 56
BERWYN	8 56
BETHANY	9 68
BEVERLY MNR CIA	4 69
BLACKHAWK HEIGHTS	10 64
BLUE ISLAND	5 56
BLUFFS	6 68
BLUFORD	4 65
BOMEDEVILLE	6 68
BONNIE BRAE	12 67

COMMUNITY	DATE
BOURBONNAISE	1 64
BRADLEY	1 64
BREESE	3 56
BRIDGE VIEW	5 61
BRIDGEPORT	7 53
BRIGHTON	10 68
BROADVIEW	8 56
BROOKFIELD	8 56
BROOKLYN	8 68
BROWNS	1 68
BRUSSELS	6 69
BURLINGTON	7 68
BURNHAM	5 56
BYRON	10 68
CAHOKIA	8 68
CAIRO	10 68
CALUMET CITY	5 56
CALUMET PARK	5 56
CAMP POINT	4 69
CAMPTOWN PWD	12 51
CANTEEN	8 68
CANTON	6 67
CARBONDALE	7 52
CARLOCK	9 68
CARLYLE	6 52
CARMI	7 68
CARPENTERSVILLE	11 66
CARRIER MILLS	10 69
CARY	12 66
CASEY	8 52
CASEYVILLE	8 68
CATLIN	6 60
CEDARVILLE	1 69
CENTERVILLE	8 68
CENTRAL CITY	1 67
CENTRAL PARK	12 55
CENTRALIA	1 67
CERRO GORDO	8 68
CHAMPAIGN	1 69
CHAPIN	9 56
CHARLESTON	12 65
CHATHAM	7 68
CHATSWORTH	10 69
CHESTER	12 51
CHICAGO	8 56
CHICAGO HGTS	1 68
CHICAGO RIDGE	4 65

COMMUNITY	DATE
MICHIGAN	
PARIS TOWNSHIP PT	10 55
PEARL BEACH	9 49
PETOSKEY	4 54
PINCONNING	11 62
PLAINWELL	3 56
PLEASANT RIDGE	8 67
PLYMOUTH	10 61
PLYMOUTH ST HOME	9 62
PONTIAC	8 67
PONTIAC TWP PT	8 67
PORTAGE TWP PT	8 51
REDFORD TOWNSHIP	8 67
ROCKFORD	9 54
ROGERS CITY	8 61
ROMULUS TWP PT	8 67
ROOSEVELT PARK	1 52
ROSEVILLE	8 67
ROYAL OAK	8 67
ROYAL OAK TWP	8 67
SAGINAW TWP	11 67
SALINE	10 64
SAULT STE MARIE	8 55
SHELBY TWP PT	8 67
SHERIDAN	4 59
SOUTH HAVEN	2 52
SOUTHFIELD	8 67
SOUTHFIELD TWP	8 67
SPARTA	8 56
SPRING LAKE	4 57
ST CLAIR	7 56
ST CLAIR SHORES	8 67
ST JOSEPH	7 53
STAMBAUGH	8 53
STAMBAUGH TWP	8 53
STERLING TWP PT	8 67
TAYLOR TWP	8 67
TECUMSEH	11 57
TRAVERSE CITY	5 52
TROY	8 67
TROY TWP	8 67
UTICA	8 67
WARREN	8 67
WAYNE	8 67
WEST BRANCH	2 64
WHITE PINE	3 55
WYANDOTTE	1 51

COMMUNITY	DATE
WYOMING	
YALE	10 60
YPSILANTI	6 59
YPSILANTI TWP	1 64
ZEELAND	4 67
	8 66
MINNESOTA	
ADA	6 67
ALBERT LEA	10 55
ALDEN	9 69
ANOKA	1 65
APPLETON	8 52
ARLINGTON	1 52
ASKOV	11 61
AURORA	3 60
BAGLEY	1 64
BALATON	5 69
BARNESVILLE	8 66
BAYPORT	9 58
BELLINGHAM	5 69
BENSON	1 52
BIRCHWOOD	11 57
BIRD ISLAND	12 58
BLAINE	1 65
BLOOMING PRAIRIE	8 68
BLOOMINGTON	11 60
BLUE EARTH	8 53
BRECKENRIDGE	10 60
BROOKLYN CENTER	4 64
BROOKLYN PARK PT	10 65
BUFFALO	8 62
BURNSVILLE	10 66
CANBY	3 66
CHATFIELD	1 67
CIRCLE PINES	8 64
CLOQUET	2 53
COLUMBIA HEIGHTS	8 57
COON RAPIDS	11 66
COTTAGE GROVE	7 64
CROOKSTON	3 54
CRYSTAL	8 64
DASSEL	5 66
DETROIT LAKES	3 68



COMMUNITY	DATE
MICHIGAN	
CLAWSON	8 67
CLINTON TWP PT	3 51
COLDWATER ST TR S	5 56
COTTRELLVILLE TWP	5 61
DEARBORN	8 67
DEARBORN TWP PT	8 67
DETROIT	8 67
EAST CHINA TWP	4 62
EAST DETROIT	8 67
EAST GRAND RAPIDS	8 55
EAST JORDAN	4 58
EAST LANSING	10 55
EAST LEONARD HGTS	1 45
ECORSE	8 67
ELK RAPIDS	12 69
ERIN TOWNSHIP	8 67
ESCANABA	2 55
ESSEXVILLE	4 58
FARMINGTON	8 67
FARMINGTON TWP PT	8 67
FENTON	9 63
FERNDALE	8 67
FLINT	1 66
FLUSHING	1 66
FRANKENMUTH	10 59
FRASER	8 67
FREMONT	2 68
GALESBURG	6 67
GARDEN CITY	8 67
GEORGETOWN TWP	9 66
GLADSTONE	1 54
GRAND HAVEN	6 52
GRAND RAPIDS	1 45
GRANDVILLE	1 54
GREENVILLE	11 66
GROSSE PT PARK	8 67
GROSSE PT SHORES	8 67
GROSSE PT WOODS	8 67
HAMTRAMCK	8 67
HARBOR SPRINGS	5 63
HARPER WOODS	8 67
HARRISON TWP PT	3 51
HARTFORD	5 66
HASTINGS	1 51
HAZEL PARK	8 67

COMMUNITY	DATE
HIGHLAND PARK	9 52
HILLSDALE	1 54
HOLLAND	8 66
HOWELL	1 61
HUDSONVILLE	9 66
HUNTINGTON WDS	8 67
INKSTER	8 67
JACKSON	8 51
KALAMAZOO	8 51
KALAMAZOO TWP	8 51
LANSING	2 63
LATHRUP VILLAGE	8 67
LINCOLN PARK	8 67
LIVONIA	8 67
LOWELL	4 57
LUDINGTON	12 49
MADISON HEIGHTS	8 67
MANISTIQUE	11 61
MARINE CITY	5 61
MARION	1 62
MARQUETTE	9 51
MARSHALL	12 61
MARYSVILLE	4 52
MASON	9 64
MELVINDALE	8 67
MENOMINEE	9 57
MERIDIAN TWP PT	2 56
MICHIGAN ST UNIV	1 65
MIDLAND	1 46
MILFORD	6 62
MONROE	12 51
MOUNT PLEASANT	10 57
MT CLEMENS	3 51
MUNISING	9 69
MUSKEGON	7 51
MUSKEGON HEIGHTS	1 52
MUSKEGON TWP PT	7 51
NANKIN TWP PT	8 67
NEGAUNEE	11 51
NEWBERRY	1 68
NORTH MUSKEGON	7 51
NORTHVILLE	8 67
NORTON TWP PT	1 52
NOVI TOWNSHIP	8 67
OAK PARK	8 67
OTSEGO	7 67
PARCHMENT	3 56

COMMUNITY	DATE
ILLINOIS	
CHILLICOTHE	12 68
CHRISMAN	2 68
CICERO	8 56
CISSNA PARK	7 69
CLARENDON HILLS	7 59
CLINTON PWD	5 68
COFFEEN	4 69
COLFAX	10 68
COLLINSVILLE	12 68
COLP	10 62
COLUMBIA	8 68
COLUMBIA GARD SUB	4 69
COMMONFIELDS	8 68
COUNTRY CLUB HILL	3 69
COUNTRYSIDE	65
COWDEN	11 68
CRAB ORCHARD	53
CREST HILL	12 68
CRESTON	8 68
CRETE	3 69
CROPPERS SUB 1,4,5	9 62
CRYSTAL LAKE	9 66
DALTON CITY	6 69
DANVERS	7 68
DANVILLE	12 55
DAWSON	12 67
DECATUR	8 60
DEER CREEK	1 69
DEERFIELD	12 55
DEKALB	3 67
DELAVAN	12 67
DES PLAINES	66
DESOTO	7 52
DIVERNON	7 68
DIX	12 68
DIXMOOR	4 54
DIXON	4 68
DOLTON	5 56
DOWELL	7 62
DOWNERS GROVE	5 67
DU QUOIN	6 62
DUPAGE CO IMP ASS	2 69
DUPO	8 68
DWIGHT	5 68
E ALTON	8 67
E DUBUQUE	11 69

COMMUNITY	DATE
E DUNDEEE	5 67
E LAWN W I A	12 68
E ST LOUIS	8 68
EAST CARONDELET	8 68
EAST GALESBURG	11 61
EAST HAZELCREST	5 56
EASTON	8 69
EATON	7 67
EDGWOOD ACRES SUB	6 68
EFFINGHAM	10 63
EL PASO	4 69
ELGIN	8 67
ELGIN EST SUBD	7 69
ELIZABETHTOWN	11 58
ELMWOOD PARK	8 56
ELWOOD	5 68
EMDEN	4 69
ENERGY	9 62
EUREKA	1 60
EVANSTON	2 47
EVERGREEN PARK	5 56
EZRA	4 65
FAIRMONT CITY	8 68
FELKERS W A	10 68
FIELDON	11 64
FLAT ROCK	7 69
FLORA	4 69
FOREST PARK	8 56
FOREST VIEW	5 56
FORSYTH	12 68
FOX RIVER GROVE	4 68
FRANKFORT	11 67
FRANKLIN	10 67
FRANKLIN GROVE	7 62
FRANKLIN PARK	8 56
FREEMANSPUR	9 62
FREEMPORT	9 66
FRENCH VILLAGE	8 68
GALENA	12 65
GALESBURG	11 61
GARDEN HOME	66
GAYS	9 68
GEORGETOWN	3 69
GIFFORD	6 68
GILLESPIE	10 69
GIRARD	7 68
GLEN RIDGE SUB	11 67

COMMUNITY	DATE
ILLINOIS	
GLENCOE	4 56
GLENDAL HTS	5 68
GLENVIEW	12 58
GODFREY	10 68
GOLDEN	8 67
GOLF	2 54
GOOD HOPE	4 69
GRANDVIEW	7 68
GRANITE CITY	7 68
GREENFIELD	11 58
GREENFIELD W C	4 69
GREENUP	12 68
GREENVIEW	8 69
GREENVILLE	11 58
HANOVER	10 69
HARRISBURG	5 67
HARVEY	4 54
HARWOOD HEIGHTS	8 56
HAZELCREST	4 54
HEBRON	3 69
HEGELER	12 55
HENNEPIN P W D	7 69
HERRICK	6 68
HERRIN	9 62
HICKORY HILLS	68
HIGHLAND PARK	12 55
HIGHWOOD	10 68
HILLCREST	11 68
HILLSIDE	8 56
HINCKLEY	5 68
HINSDALE	6 68
HODGKINS	12 64
HOLIDAY SHRS SUB	6 69
HOMETOWN	5 56
HOOPESTON	2 67
HOOTEN PWD	10 66
HOPEDALE	3 69
HUME	4 69
ILLIOPOLIS	12 67
IRVINGTON	1 67
JACKSONVILLE	8 56
JEROME	7 68
JERSEYVILLE	11 64
JUNCTION CITY	1 67
JUSTICE	66
KANKAKEE	1 64

COMMUNITY	DATE
KELL	12 68
KENILWORTH	1 53
KENNEY	7 69
KINDERHOOK	6 69
LA GRANGE	5 61
LA GRANGE PARK	8 56
LA SALLE	3 57
LACON	10 66
LAGRANGE HIGHLAND	12 67
LAKE BLUFF	11 60
LAKE FOREST	12 58
LAKESIDE PWD	10 67
LAMOILLE	1 68
LANARK	1 59
LANGLEYVILLE PWD	3 66
LANSING	2 53
LAWRENCEVILLE	7 53
LEBANON	4 59
LELAND GROVE	7 68
LENA	4 69
LEROY	1 53
LEYDEN TWP PART	12 60
LIBERTY	7 69
LINCOLN	68
LINCOLNWOOD	8 56
LISLE	1 68
LOCKPORT HTS SD	11 68
LOVEJOY	8 68
LOVES PARK	10 68
LUDLOW	3 69
LYNDON	5 68
LYONS	5 61
MACKINAW	2 69
MACON	11 67
MADISON	7 68
MALTA	11 68
MANSFIELD	1 69
MARENGO	8 69
MARION	5 62
MARISSA	12 68
MARKHAM	4 54
MARSEILLES	12 67
MARVIRAY MANOR	6 68
MATTESON	4 57
MAYWOOD	8 56
MCCOOK	8 56
MCHENRY	2 63

COMMUNITY	DATE
MARYLAND	
UNIVERSITY PARK	12 51
VICTORY VILLA	11 52
VIERS MILL	12 51
VILLA NOVA	11 52
WALKERSVILLE	68
WALTERS	11 52
WASHINGTON GROVE	12 51
WEST ELKRIDGE	11 52
WESTGATE	12 51
WESTMINSTER	11 57
WHEATON	12 51
WILLIAMSPORT	12 51
WILTONDALE	11 52
WOOD ACRES	12 51
WOODBROOK	11 52
WOODLAWN	11 52
WOODSIDE	6 52
MASSACHUSETTS	
AMESBURY	1 68
ANDOVER	5 69
ASHBURNHAM	11 57
ATHOL	1 52
BEVERLY	12 52
COHASSET	6 56
CONCORD PT	8 52
DANVERS	5 51
HAMILTON	3 56
HINGHAM	5 53
HULL	5 53
LYNNFIELD PART	1 59
MEDWAY	2 53
MIDDLETON	5 51
NEWBURY PT	3 69
NEWBURYPORT	3 69
NEWTON	9 63
PEMBROKE	9 69
SALEM	12 52
SCITUATE	7 54
SEEKONK	1 52
SHARON	2 53
SHREWSBURY	2 53

COMMUNITY	DATE
SOMERSET	6 69
SUDBURY	2 60
SWANSEA	9 69
TEMPLETON	6 51
TOPSFIELD	12 53
WELLESLEY	10 69
WENHAM	67
WESTMINSTER	68
WINCHESTER	3 56
MICHIGAN	
ADRIAN	1 60
ALBION	1 66
ALGONAC	9 49
ALMA	8 65
ALPENA	9 58
ANN ARBOR	12 51
BANGOR TWP PT	4 58
BATTLE CREEK	4 51
BAY CITY	4 58
BAYVIEW	4 54
BELLEVILLE	8 67
BENTON HARBOR	9 51
BERKLEY	8 67
BEVERLY HILLS	8 67
BIG RAPIDS	4 61
BIRMINGHAM	8 67
BLACKMAN TWP PT	8 51
BLOOMFIELD TWP PT	8 67
BRIDGMAN	12 68
BRIGHTON	3 64
BRONSON	10 67
BUCHANAN	10 52
CANNON TWP PT	12 59
CANTON TWP PT	8 67
CARSON CITY	10 66
CASCADIA TWP PT	1 45
CEDAR SPRINGS	10 58
CENTER LINE	8 67
CENTRAL LAKE	1 63
CHARLEVOIX	10 53
CHARLOTTE	6 65
CHELSEA	5 61

COMMUNITY	DATE
MARYLAND	
LAKESIDE	11 52
LANDOVER	12 51
LANHAM	12 51
LANSLOWNE	11 52
LARCHMONT	11 52
LAUREL	12 51
LAVENDER HILL	11 52
LENOX	12 51
LINHIGH	11 52
LOCH RAVEN	11 52
LOCHEARN	11 52
LODGE FOREST	11 52
LONG BAR HARBOR	67
LUTHERVILLE	11 52
LYNCH POINT	11 52
MARYLAND CITY	64
MARYLAND PARK	6 52
MIDDLE RIVER	11 52
MIDDLEBOROUGH	11 52
MILFORD	11 52
MONTGOMERY HILLS	12 51
MONUMENTAL	11 52
MORNINGSIDE	12 51
MT RAINIER	12 51
NECKER	11 52
NEW WINDSOR	68
NORTH BRENTWOOD	12 51
NORTH EAST	62
NORTH POINT	11 52
OAK FOREST	11 52
OAKLAND	64
OAKLEIGH	11 52
OVERLEA	11 52
OWINGS MILLS	11 52
PADONIA	11 52
PARADISE	11 52
PARKVILLE	11 52
PAROLE	8 54
PERRY HALL	11 52
PERRYMAN	67
PIKESVILLE	11 52
PINEHURST	11 52
PINES ON SEVERN	64
PORT DEPOSIT	2 56
PROVIDENCE	64
PUTTY HILL	11 52

COMMUNITY	DATE
RALSTON	11 52
RANDALLSTOWN	11 52
REISTERSTOWN	11 52
RELAY	11 52
RIDERWOOD	11 52
RIGGS ROAD DA	12 51
RIVER NECK	11 52
RIVERDALE	12 51
RIVERDALE HEIGHTS	12 52
RIVIERA BEACH	11 52
ROCK HALL	5 62
ROCKDALE	11 52
ROCKLAND	11 52
ROCKVILLE	12 58
RODGERS FORGE	11 52
ROLAND TERRACE DA	11 52
ROSEDALE	11 52
ROSEMONT	11 52
ROSEWALD BEACH	11 52
ROSLYN	11 52
ROSSVILLE	11 52
ROXBURY PEN FARM	12 51
RUXTON	11 52
SALISBURY	4 59
SEABROOK	6 52
SEAT PLEASANT	12 51
SECURITY	12 51
SEVERNA PARK	64
SHEPPARD	11 52
SILVER HILL	12 51
SILVER SPRING	12 51
SMITHSBURG	12 51
SNOW HILL	1 58
SOMERSET	12 51
ST DENIS	11 52
ST HELENA	11 52
STAB	11 52
STANSBURY	11 52
STEMMERS RUN	11 52
STONELEIGH	11 52
SUDBROOK PARK	11 52
SUITLAND	12 51
TAKOMA PARK	12 51
TEXAS	11 52
TIMONIUM	11 52
TOWSON	11 52
TURNER	11 52

COMMUNITY	DATE
ILLINOIS	
MELROSE PARK	8 56
MENDOTA	4 68
MERRIONETTE PARK	5 56
MIDLOTHIAN	5 56
MILFORD	3 68
MILLEDGEVILLE	5 68
MITCHELL PWS	7 68
MOLINE	3 55
MOMENCE	3 68
MONTICELLO	2 69
MORRIS	5 67
MORRISON	12 68
MORRISONVILLE	7 69
MORTON	7 68
MORTON GROVE	2 54
MOWEAQUA	10 69
MT CLARE	10 69
MT VERNON	4 65
MT ZION	10 62
MURDALE	56
MURPHYSBORO	9 60
NAMEOKI	7 68
NAPERVILLE	6 68
NASHVILLE	12 56
NATIONAL CITY	8 68
NEW BERLIN	8 69
NEWARK	6 68
NEWMAN	3 69
NEWMAN AREA PWD	10 58
NEWTON	3 54
NIANTIC	11 68
NILES	8 56
NOBLE	6 68
NORMAL	12 53
NORRIDGE	8 56
NORTH CHICAGO	1 68
NORTH LAKE	8 56
NORTH PARK PWD	1 69
NORTH RIVERSIDE	8 56
NORTHBROOK	4 56
NORTHFIELD	12 52
OAK LAWN	5 56
OAK PARK	8 56
OAKLAND	11 68
OAKVIEW SUB	3 68
OBLONG	11 65

COMMUNITY	DATE
ODIN	1 67
OFALLON	8 68
OKAWVILLE	1 68
OQUAWKA	3 69
ORANGEVILLE	11 68
OREANA	5 68
ORIENT	4 65
ORION	9 52
ORLAND PARK	6 68
PALESTINE	4 69
PALMER	7 69
PALMYRA	3 69
PARK FOREST	12 52
PARK FOREST SO	3 68
PARK RIDGE	8 56
PARK VILLA	10 68
PAW PAW	9 59
PAWNEE	7 68
PAXTON	5 68
PEARL	10 69
PENFIELD W D	5 68
PEORIA	10 58
PERCY	8 69
PHOENIX	4 54
PINCKNEYVILLE	8 59
PITTSFIELD	2 63
PLAINVILLE	10 69
PLANO	7 68
PLEASANT HILL COM	6 69
PLEASANT PLAINS	12 68
PLYMOUTH	8 68
POLO	2 69
POMONA	3 67
PONTOON BEACH	7 68
POSEN	4 54
POTOMAC	3 63
PRESTBURY U C	12 68
PRESTON HGTS	5 68
PROPHETSTOWN	2 68
PROSPECT PARK	8 68
QUINCY	4 54
RAMSEY	2 68
RANKIN	1 60
RANTOUL	5 65
RICHVIEW	1 67
RIDGEWOOD LEDGES	3 69
RIVER FOREST	8 56

COMMUNITY	DATE
ILLINOIS	
RIVER GROVE	8 56
RIVERDALE	5 56
RIVERSIDE	8 56
RIVERTON	7 69
ROBBINS	5 56
ROBINSON	11 65
ROCHESTER	7 68
ROCK FALLS	9 68
ROCK ISLAND	6 63
ROCKFORD	10 66
ROSELLE	6 69
ROSEMONT	5 61
ROSICLARE	11 58
ROSSVILLE	5 62
ROYAL	11 68
SALEM	10 58
SANDOVAL	1 67
SAUGET	8 68
SAUK VILLAGE	3 69
SAVOY	
SCHILLER PARK	8 56
SESSER	11 54
SHAWNEETOWN	10 65
SHERMAN	12 67
SHILOH	8 68
SIDELL	4 69
SIGNAL HILL	8 68
SKOKIE	2 47
SMITH-CLAIR W C	8 68
SMITHFIELD	12 68
SO JACKSONVILLE	8 56
SOUTH BELOIT	4 68
SOUTH CHICAGO HTS	3 68
SOUTH ELGIN	5 68
SOUTH HIGHWAY PWD	55
SOUTH HOLLAND	4 54
SOUTH STICKNEY	55
SOUTHERN VIEW	7 68
SPARLAND	8 68
SPARTA	3 54
SPRINGFIELD	7 68
ST ANNE	11 68
ST CLAIR TWP	8 68
ST ELMO	11 66
ST JOHNS	10 62
ST JOSEPH	7 68

COMMUNITY	DATE
ST MARIE	8 69
STAUNTON	6 69
STEELVILLE	12 57
STEGER	10 67
STERLING	7 69
STEWART	6 68
STICKNEY	5 56
STOCKTON	12 68
STONE CHURCH	11 58
STONE PARK	8 56
STOOKEY TWP	8 68
STOY	11 65
STRAWN	6 68
STREAMWOOD	2 68
STRONGHURST	3 69
SULLIVAN	2 61
SUMMIT	5 56
SUMNER	7 53
SUNNYLAND	9 68
SWANSEA	8 68
TALLULA	4 69
TAMAROA	7 62
TAMMS	10 69
TAYLORVILLE	5 60
TAZEWELL CO PT	10 69
THAYER	7 68
THOMASBORO	6 68
TILDEN	12 68
TILTON	12 55
TINLEY PARK	7 66
TOLEDO	12 58
TREMONT	11 68
TRI STATE SUB	5 68
TUSCOLA	4 69
UNION	4 68
URBAN	1 69
URSA	8 68
VALIER	11 54
VALLEY VIEW	3 68
VANDALIA	5 67
VENICE	7 68
VERGENNES	9 60
VERMONT	2 69
VERSAILLES	2 69
VIENNA	1 67
VILLA PARK	3 68
VIRDEN	7 68

COMMUNITY	DATE
MARYLAND	
BALTIMORE	11 52
BARE HILLS	11 52
BAYNESVILLE	11 52
BEL AIR	12 55
BELTSVILLE	12 51
BELVEDERE HEIGHTS	64
BENGIES	11 52
BERWYN	12 51
BETHESDA	12 51
BLADENSBURG	12 51
BOULEVARD HEIGHTS	12 51
BRADBURY BLVD DA	12 51
BRADBURY HEIGHTS	12 51
BRENTWOOD	12 51
BROOKLYN PARK	11 52
BROOKMONT	12 51
BURNT MILLS VILL	12 51
CABIN JOHN	12 51
CABIN JOHN PARK	12 51
CAPITOL HEIGHTS	12 51
CARNEY	11 52
CATONSVILLE	11 52
CAVETOWN	12 51
CENTRAL AVENUE DA	12 51
CHESACO PARK	11 52
CHESTERTOWN	64
CHEVERLY	12 51
CHEVY CHASE	12 51
CHILLUM	12 51
COCKEYSVILLE	11 52
COLLEGE PARK	12 51
COLMAR MANOR	12 51
COLONIAL PARK	11 52
COTTAGE CITY	12 51
CROFTON	64
CROWDENTOWN	11 52
CUB HILL	11 52
DELIGHT	11 52
DISTRICT HEIGHTS	12 51
DREAMS LANDING	8 54
DUMBARTON	11 52
DUNDALK	11 52
EAST RIVERDALE	12 52
EASTPORT	8 54
EDGEMERE	11 52
EDGEWOOD HEIGHTS	58

COMMUNITY	DATE
EDMONSTON	12 51
ELKRIDGE	11 52
ENGLISH CONSUL	11 52
ESSEX	11 52
FAIRMOUNT HEIGHTS	12 51
FAIRTOWN	11 52
FISHTOWN	11 52
FITZELL	11 52
FOREST GLEN	12 51
FOREST HEIGHTS	12 51
FORESTVILLE	12 51
FOUR CORNERS	12 51
FREDERICK	2 54
FULLERTON	11 52
FUNKSTOWN	12 51
GAITHERSBURG	12 51
GARRETT PARK	12 51
GARRISON	11 52
GIBSON ISLAND	64
GLEN BURNIE	64
GLEN ECHO	12 51
GLENDALE	12 51
GLENMAR MANOR	11 52
GLENMONT	12 51
GLYNDON	11 52
GOLDEN RING	11 52
GREENBELT	12 51
HAGERSTOWN	12 51
HALETHORPE	11 52
HALFWAY	12 51
HAMPSHIRE GARDENS	12 51
HARBOR VIEW	11 52
HARRISTOWN	11 52
HARWOOD	11 52
HEBBVILLE	11 52
HILLANDALE	12 51
HOWARDSVILLE	11 52
HYATTSVILLE	12 51
IDLEWILD	11 52
INVERNESS	11 52
JOPPATOWNE	66
KENILWORTH	12 51
KENSINGTON	12 51
KENWOOD	12 51
KENWOOD PARK	11 52
KINGS HTS	64
LAKE	11 52

COMMUNITY	DATE
LOUISIANA	
LABADIEVILLE	9 60
LAROSE	54
LOCKPORT	5 54
MATHEWS	54
MONTEGUT	1 56
NAPOLEONVILLE	9 60
PAINCOURTVILLE	9 60
PLATTENVILLE	9 60
RACELAND	54
RAYVILLE	3 64
SCHRIEVER	1 56
ST MARTINSVILLE	11 68
SUPREME	9 60
TERREBONNE #1 PT	1 56
TERREBONNE #2 PT	1 56
TERREBONNE #3 PT	1 56
THIBODAUX	11 56

COMMUNITY	DATE
MAINE	
ASHLAND	11 66
AUBURN	8 69
BAILEYVILLE	4 55
BANGOR	2 67
BAR HARBOR	12 63
BATH	9 69
BELFAST	9 60
BENTON	1 65
BRADLEY	1 63
BREWER	6 67
BRIDGTON	10 63
BRUNSWICK	8 55
BUCKSPORT	12 69
CAMDEN	12 69
CARIBOU	1 59
CLINTON	6 69
EAST MILLINOCKET	4 66
EASTPORT	12 69
ELLSWORTH	10 69
FAIRFIELD	1 65
FORT FAIRFIELD	12 59
HAMPDEN	10 65
HOULTON	12 68

COMMUNITY	DATE
ISLAND FALLS	12 67
JACKMAN	4 64
MACHIAS	4 66
MADAWASKA	4 60
MEXICO	1 67
MILFORD	1 63
MILLINOCKET	7 60
MOOSE RIVER	4 64
MOUNT DESERT	3 62
NORTH HAVEN	4 66
NORWAY	10 52
OLD TOWN	1 63
ORONO	3 62
OWLS HEAD	12 69
PITTSFIELD	1 65
PRESQUE ISLE	6 60
ROCKLAND	12 69
ROCKPORT	12 69
RUMFORD	11 59
SOUTHWEST HARBOR	1 59
THOMASTON	12 69
TOPSHAM	8 55
VAN BUREN	1 67
VASSALBORO	1 65
VEAZIE	3 62
WASHBURN	10 61
WATERVILLE	1 65
WINSLOW	1 65

COMMUNITY	DATE
MARYLAND	
ABERDEEN	63
ADELPHI	12 51
AERO ACRES	11 52
ALTA VISTA	12 51
ANNAPOLIS	8 54
ANNAPOLIS SUBURBS	8 54
ANNESLIE	11 52
ARBUTUS	11 52
ARDWICK	12 51
ARUNDEL VILLAGE	11 52
AVALON	11 52
BALNEW	11 52
BALT HIGHLAND	11 52

COMMUNITY	DATE
ILLINOIS	
W DUNDEE	7 68
WAGGONER	9 68
WALNUT HILL	1 67
WAMAC	1 67
WARREN	5 66
WARRENSBURG	11 68
WARRENVILLE	5 68
WARSAW	10 69
WASHINGTON PARK	8 68
WATERLOO	7 68
WATERMAN	2 69
WAUKEGAN	3 52
WAVERLY	10 67
WEST CHICAGO	6 68
WEST FRANKFORT	5 65
WESTCHESTER	8 56
WESTVILLE	12 55
WHEATON	7 63
WHEATON FARMS	5 68
WHEELING	2 63
WHITE HALL	10 62
WILL CO C W A	2 69
WILL CO SUBD	2 69
WILLIAMSVILLE	12 67
WILLOW SPRINGS	6 66
WILMETTE	12 58
WINFIELD	10 68
WINNETKA	12 52
WINSLOW	4 69
WONDER LAKE W C	9 69
WOOD DALE	3 68
WOODLAWN	12 68
WOODRIDGE	6 68
WOODSTOCK	9 66
YORK CENTER	3 54

COMMUNITY	DATE
INDIANA	
ALEXANDRIA	9 68
ALFORD	4 69
ALGIERS	4 69
ANDERSON	8 63
AURORA	9 67

COMMUNITY	DATE
BATESVILLE	4 52
BEDFORD	1 52
BEECH GROVE	8 51
BEN DAVIS	8 51
BENNETSVILLE	1 67
BLACK OAK	2 53
BLOOMFIELD	11 52
BOONVILLE	12 67
BRAZIL	1 60
BRETZVILLE	8 51
BROOKSIDE	51
BROOKSTON	1 67
BROOKVILLE	7 68
BROWNSTOWN	6 69
CAMBRIDGE CITY	1 68
CANAAN	4 68
CARMEL	11 56
CHARLESTOWN	2 66
CLARKSVILLE	10 59
COALMONT	4 54
COLUMBUS	1 52
CORYDON	5 66
CRAWFORDSVILLE	12 64
CROWS NEST	7 58
CULVER	1 53
DALE	7 63
DELPHI	9 65
DILLSBORO	9 67
DUNE ACRES	12 67
DUPONT	4 68
EAST CHICAGO	7 66
EAST GARY	56
EDGEWOOD	8 51
ELKHART	6 53
EVANSVILLE	10 63
FLINT LAKE WATER	10 52
FOLSOMVILLE	12 67
FORT WAYNE	8 51
FORTVILLE	3 56
GARY	11 56
GENTRYVILLE	12 67
GRANDVIEW	10 67
GREEN ACRES	65
GREENDALE	4 57
GREENSBURG	4 53
GREENWOOD	2 69
GRIFFITH	11 56

COMMUNITY	DATE
INDIANA	
GUILFORD	4 57
HAGERSTOWN	10 55
HAMBURG	1 67
HAMMOND	2 53
HANOVER	9 68
HANOVER COLLEGE	9 68
HARMONY	1 60
HEILMAN	12 67
HENRYVILLE	67
HIGHLAND	2 53
HOBART	11 56
HOLLAND	11 65
HEMLOCK	9 57
HUNTINGBURG	8 51
HYMERA	4 54
INDIANAPOLIS	8 51
JASONVILLE	4 54
JASPER	9 58
JEFFERSONVILLE	10 59
KENDALLVILLE	4 58
KNIGHTSTOWN	4 69
KNIGHTSVILLE	1 60
KOKOMO	7 52
LA PORTE	9 54
LAFAYETTE	5 53
LAGRANGE	11 56
LAMAR	7 63
LAURENCEVILLE	4 57
LEXINGTON	4 68
LIBERTY	9 69
LIGONIER	6 68
LINCOLN CITY	12 67
LINCOLN GARDENS	56
LOGANSPOUT	3 56
LONG BEACH	10 69
LYNDHURST	7 58
LYONS	4 52
MADISON	4 68
MALTERSVILLE	8 51
MAPLEWOOD PARK	51
MARIAH HILL	7 63
MARION	11 52
MARS HILL	8 51
MARTINSVILLE	4 53
MARYSVILLE	2 66
MAYWOOD	9 57

COMMUNITY	DATE
MCCUTCHAN	65
MEMPHIS	67
MERIDIAN HILLS	9 57
MERRILLVILLE	65
MICHIGAN CITY	4 52
MICKLEYVILLE	8 51
MIDWAY	12 67
MISHAWAKA	10 64
MONON	2 59
MONTGOMERY	4 58
MONTICELLO	3 69
MONTPELIER	10 67
MOORESVILLE	7 67
MOROCCO	7 66
MT MARIAH	2 66
MT VERNON	11 56
MUNCIE	1 57
MUNSTER	2 53
NABB	2 66
NAPPANEE	2 68
NEW ALBANY	9 69
NEW ALSACE	4 57
NEW CARLISLE	1 53
NEW CASTLE	8 54
NEW CHICAGO	56
NEW HAVEN	63
NEW MARKET	2 66
NEWBURGH	3 66
NORTH CROWS NEST	7 58
NORTH VERNON	8 64
NORTHWOOD	56
OGDON DUNES	2 63
OLDENBURG	4 52
OOLITIC	1 52
OSGOOD	12 66
OTISCO	2 66
OTWELL	4 69
PADLI	5 65
PARKERSDALE	51
PERU	1 69
PLYMOUTH	12 69
PORTAGE	56
POTTAWATTAMIE PK	4 52
PRINCETON	3 57
QUEENSVILLE	8 64
RENSSELAER	4 65
RICHMOND	5 63

COMMUNITY	DATE
KENTUCKY	
LYNCH	6 57
LYNDON	8 51
LYNNVIEW	8 51
MANCHESTER	8 65
MARTIN	4 52
MAYFIELD	9 52
MAYSVILLE	4 51
MCROBERTS	1 69
MEADOWVIEW ESTATE	8 51
MIDDLETOWN	8 51
MIDWAY	8 66
MINOR LANE HEIGHT	8 51
MOCKINGBIRD	8 51
MONTICELLO	10 69
MOORLAND CITY	8 51
MOREHEAD CITY	10 68
MOREHEAD COLLEGE	6 53
MORGANTOWN	9 63
MT STERLING	3 60
MURRAY	11 59
NEW CASTLE	3 60
NICHOLASVILLE	9 65
NORBOURNE ESTATES	8 51
OWENSBORO	9 53
PADUCAH	11 66
PAINTSVILLE	4 52
PARIS	3 63
PARK HILLS	7 67
PARKSIDE	8 51
PARKWAY VILLAGE	8 51
PIKEVILLE	8 59
PINEVILLE	9 67
PLYMOUTH VILLAGE	8 51
PRESTONSBURG	7 58
PRINCETON	6 66
PROVIDENCE	7 66
RICHLAWN	8 51
RICHMOND	8 67
ROLLING FIELDS	8 51
RUSSELLVILLE	9 65
SCOTTSVILLE	10 60
SENECA VISTA	8 51
SHELBY CITY	7 54
SHELBYVILLE	3 64
SHEPHERDSVILLE	3 60
SHIVELY	8 51

COMMUNITY	DATE
SOMERSET	5 69
SOUTH FT MITCHELL	7 67
SOUTH WILLIAMSON	4 53
SPRINGFIELD	1 58
SPRINGLEE	8 51
ST MATTHEWS	8 51
STAFFORDSVILLE	4 52
STANFORD	5 66
STRATHMOOR GARDEN	8 51
STRATHMOOR MANOR	8 51
STRATHMOOR VILL	8 51
STURGIS	7 65
TAYLORSVILLE	3 60
THEALKA	4 52
VANCEBURG	10 58
VERSAILLES	9 52
WELLINGTON	8 51
WEST LIBERTY	4 62
WEST SOMERSET	5 69
WHITESBURG	1 69
WILLIAMSBURG	3 66
WINCHESTER	6 61
WINDY HILLS	8 51
WOODLAWN PARK	8 51
LOUISIANA	
BAYOU CANE	1 56
BELLEROSE	9 60
BOURG	1 56
CHAUVIN	1 56
CUT OFF	4 54
DONNER	1 56
DULAC	1 56
GALLIANO	54
GHEENS	54
GIBSON	1 56
GOLDEN MEADOWS	54
GRAND ISLE	54
GRAY	1 56
HOUMA	1 56
JONESVILLE	11 61
KLOTZVILLE	9 60
KRAEMER	54

COMMUNITY	DATE
KENTUCKY	
BARBOURVILLE	6 69
BARSTOWN	1 61
BARDWELL	4 57
BEATTYVILLE	5 58
BEECHWOOD CITY	8 51
BELLEMEADE	8 51
BELLEWOOD	8 51
BENHAM	1 69
BENTON	1 57
BEREA	3 62
BOONEVILLE	12 68
BOWLING GREEN	5 68
BRACKEN CO WD PT1	10 67
BRIARWOOD	8 51
BROAD FIELDS	8 51
BROOKSVILLE	4 67
BROWNSBORO CITY	8 51
BUECHEL	8 51
BURGIN	5 58
BURKESVILLE	10 53
CADIZ	1 65
CALHOUN	11 53
CALVERT CITY	2 60
CAMBRIDGE	8 51
CAMPBELLSVILLE	3 64
CARROLLTON	9 62
CENTRAL CITY	3 52
CHERRY WOOD	8 51
CHRISTOPHER	3 57
COLUMBIA	11 66
CORBIN	2 67
CRESCENT SPRINGS	7 67
CUMBERLAND	12 54
CYNTHIANA	3 52
DANVILLE	7 54
DAWSON SPRINGS	8 65
DEVONDALE	8 51
DRUID HILLS	8 51
ELIZABETHTOWN	7 51
ELKTON	4 64
FLSMERE	7 67
EMINENCE	3 60
ERLANGER	7 67
EVARTS	1 69
FAIRMEADE	8 51
FERGUSON	5 69

COMMUNITY	DATE
FERN CREEK	8 51
FLORENCE	7 67
FORT MITCHELL	7 67
FORT WRIGHT	7 67
FRANKFORT	9 57
FRANKLIN	1 64
GLASGOW	2 52
GRAYMOOR	8 51
GRAYSON	8 64
GREENSBURG	4 51
GREENVILLE	1 61
HARDINSBURG	10 64
HARRODSBURG	5 58
HARTFORD	1 65
HAZARD	3 57
HENDERSON	3 62
HICKMAN	6 62
HIGHLAND	4 54
HODGENVILLE	12 62
HOPKINSVILLE	8 51
HOUSTON ACRES	8 51
HUSTONVILLE	7 54
INDIANA HILLS	8 51
IRVINE	1 65
JACKSON	5 63
JAMESTOWN	7 69
JEFFERSONTOWN	8 51
JENKINS	1 69
JETT	9 57
JUNCTION CITY	7 54
KEENELAND CITY	8 51
KINGSLEY	8 51
LA GRANGE	4 62
LAKESIDE	7 67
LANCASTER	12 52
LANCER	7 58
LAWRENCEBURG	6 56
LEBANON	3 60
LEBANON JUNCTION	3 68
LECKIEVILLE	4 53
LEXINGTON	4 54
LINCOLNSHIRE	8 51
LONDON	8 67
LOOKOUT HEIGHTS	7 67
LOTHAIR	3 57
LOUISA	1 62
LOUISVILLE	8 51

COMMUNITY	DATE
INDIANA	
ROCHESTER	7 65
ROCKPORT	4 61
RUSHVILLE	10 58
SALEM	2 67
SANTA CLAUS	7 63
SCIPPIO	8 64
SCOTTSBURG	67
SELLERSBURG	67
SEYMOUR	2 54
SHELBYVILLE	9 65
SOUTH BEND	8 67
SOUTH WHITLEY	4 63
SOUTHPORT	8 51
SPEED	67
SPEEDWAY	3 68
ST ANTHONY	8 51
ST JOSEPH	1 67
ST MARKS	8 51
ST PETER	4 57
STERLING	8 69
SUNNYBROOK	51
SUNNYMEAD	51
TENNYSON	12 67
TOPEKA	65
TURKEY CREEK	56
UNDERWOOD	11 67
VALPARAISO	10 52
VEEDERSBURG	8 69
VELPEN	4 69
VERNON	9 64
VERNON ACRES	8 51
VEVAY	4 55
VIENNA	11 67
VIKING VILLAGE	56
VINCENNES	2 67
WABASH	10 58
WALFORD MANOR	65
WALKERTON	2 53
WARREN	67
WARREN PARK	9 57
WARSAW	8 68
WATHEN HEIGHTS	65
WAYNE DALE	7 58
WEISBURG	4 57
WEST LAFAYETTE	10 55
WILLIAMS CREEK	8 51

COMMUNITY	DATE
WINAMAC	5 58
WINONA LAKE	8 68
WINSLOW	9 69
WOODRUFF PLACE	8 51
YORKVILLE	4 57
ZIONSVILLE	11 51
IOWA	
ALGONA	4 59
ALLERTON	10 68
ALLISON	8 68
AMES	2 57
APLINGTON	1 67
ARMSTRONG	9 68
ARNOLDS PARK	9 68
ATLANTIC	11 68
AUDUBON	5 53
AVOCA	8 64
BANCROFT	4 63
BEACON	2 65
BEDFORD	9 68
BELMOND	8 64
BETTENDORF	7 52
BLOOMFIELD	4 69
BOONE	9 61
BURLINGTON	4 63
CARLISLE	12 64
CEDAR FALLS	9 58
CEDAR RAPIDS	5 52
CENTER POINT	3 66
CENTERVILLE	6 62
CHARITON	12 58
CLARINDA	9 52
CLARKSVILLE	3 69
CLEAR LAKE	4 63
CLINTON	9 65
CLIVE	9 59
COON RAPIDS	4 68
CORNING	7 58
CORYDON	11 68
COUNCIL BLUFFS	8 62
CRESCO	6 60
CRESTON	4 53

COMMUNITY	DATE
IOWA	
DAKOTA CITY	3 69
DAVENPORT	7 52
DECORAH	12 63
DENISON	11 64
DES MOINES	9 59
DUBUQUE	10 51
EAGLE GROVE	1 53
EARLVILLE	12 69
ELDORA	10 65
ELDRIDGE	10 68
ELK HORN	6 66
EMMETSBURG	3 55
ESTHERVILLE	3 58
FAIRFAX	8 68
FAIRFIELD	12 52
FARLEY	7 68
FOREST CITY	10 69
FORT MADISON	12 68
GLADBROOK	8 68
GLENWOOD	10 59
GLIDDEN	12 69
GRAETTINGER	8 68
GREENFIELD	8 62
GUTHRIE CENTER	2 59
HARLAN BLEND	5 57
HARTLEY	8 52
HUMBOLDT	3 64
INDEPENDENCE	4 63
INDIANOLA BLEND	2 56
IOWA CITY	8 53
IOWA FALLS	7 68
IOWA STATE UNIV	1 64
IRETON	9 68
JEFFERSON	3 60
JESUP	10 68
KALONA	11 68
KEOKUK	4 55
LAKE CITY	5 65
LAKE MILLS	2 65
LAKE VIEW	6 60
LAKESIDE	1 67
LAMBS GROVE	10 59
LAMONI	7 63
LAURENS	8 68
LIME SPRINGS	11 65
MANCHESTER	12 52

COMMUNITY	DATE
MANILLA	12 69
MARATHON	11 69
MARION	11 63
MARSHALLTOWN	12 58
MILFORD	9 68
MONTICELLO	12 63
MUSCATINE	5 66
NEWTON	10 59
NORTHWOOD	6 66
NORWALK	7 69
OAKLAND BLEND	6 62
OKOBOJI	6 69
ONAWA	10 67
ORLEANS	8 68
OSAGE	2 69
OSKALOOSA	2 65
OTTUMWA	1 58
PAULLINA	11 69
PELLA	11 59
PERRY	6 53
PLEASANT HILL	9 59
POSTVILLE	11 65
RED OAK	3 62
RUTHVEN	1 68
SAC CITY	3 58
SANBORN	9 68
SHENANDOAH	8 62
SIGOURNEY	4 62
SIOUX CENTER	10 61
SIOUX RAPIDS	11 59
SPENCER	8 64
SPIRIT LAKE	8 68
ST ANSGAR	10 57
STANWOOD	10 68
STORM LAKE	1 67
TIPTON	7 62
UNIV OF IOWA	7 67
UNIVERSITY HEIGHT	8 53
UNIVERSITY PARK	2 65
URBANDALE	9 59
VICTOR	9 68
VILLISCA	11 63
WATERLOO	12 66
WAUKON	10 51
WEST OKOBOJI	9 68
WHITING	11 68
WINDSOR HEIGHTS	9 59

COMMUNITY	DATE
IOWA	
WINTERSET	1 64
WINTHROP	7 68
WOODWARD HOSP-SCH	9 67
KANSAS	
ARKANSAS CITY	6 53
ASHLAND	9 65
ATCHISON	7 69
BASSETT	12 52
BONNER SPRINGS	12 59
BURLINGTON	6 59
CHANUTE	10 56
CLEARWATER	12 61
COFFEYVILLE	10 52
COUNCIL GROVE	7 58
COUNTRYSIDE	2 66
CULLEN VILLAGE	8 57
EDWARDSVILLE	7 64
EL DORADO	9 52
ELLSWORTH	2 66
EMPORIA	9 59
EUREKA	5 58
FAIRWAY	2 66
FORT SCOTT	8 52
FREDONIA	9 54
GARDNER	12 66
GARNETT	6 52
GAS CITY	12 52
HAYS	8 52
HERINGTON	7 61
INDEPENDENCE	8 55
IOLA	12 52
JOHNSON CO PT 3	12 59
JUNCTION CITY	1 52
KANSAS CITY	7 64
LA HARPE	12 52
LAWRENCE	3 53
LEAVENWORTH PT 7	12 59
LEAWOOD	2 66
LENEXA	2 66
LYONS	5 58
MADISON	3 61

COMMUNITY	DATE
MANHATTAN	12 55
MARION	12 58
MERRIAM	2 66
MISSION	2 66
MISSION HILLS	2 66
MISSION WOODS	2 66
NEODESHA	7 69
OLATHE	3 60
OSAGE CITY	2 67
OSAWATOMIE	8 54
OTTAWA	9 46
OVERLAND PARK	2 66
PAOLA	3 53
PARSONS	9 53
PAULINE	8 57
PHILLIPSBURG	4 61
PITTSBURG	7 67
PRAIRIE VILLAGE	2 66
QUINDARO TWP	7 64
ROELAND PARK	2 66
SABETHA	4 68
SALINA	8 69
SENECA	8 52
- SHAWNEE	2 66
- SHAWNEE TWP	7 64
SOLDIER TWP	8 57
STAFFORD	7 62
TECUMSEH TWP	8 57
TOPEKA	8 57
WESTWOOD	2 66
WESTWOOD HILLS	2 66
WYANDOTTE PT 3	12 59
WYANDOTTE PT 4	12 59
WYANDOTTE TWP PT	7 64
YATES CENTER	2 55

COMMUNITY	DATE
KENTUCKY	
ADAIRVILLE	10 65
AFLEX	4 53
ALBANY	11 65
ANCHORAGE	8 51
ASHLAND	11 52
AUDUBON PARK	8 51