

 **Black Hills National Forest**  
**Travel Management Special Order**  
**Bearlodge Ranger District**  
**Attachment A**

**Special Order**  
**TRAVEL RESTRICTIONS**  
**Bearlodge Ranger District - Crook County, Wyoming**  
**USDA - FOREST SERVICE**  
**BLACK HILLS NATIONAL FOREST**

Pursuant to 36 CFR, Section 261.50(a) and (b), the following acts are prohibited on the areas, roads, and trails described in this order, and shown on the attached map, on National Forest System lands within the Black Hills National Forest, Bearlodge Ranger District, Crook County, Wyoming until 12/31/2010 or until rescinded.

For the purposes of this special order, a "motorized wheeled vehicle" is defined as any device, vehicle, or structure powered by an internal combustion engine, electricity, or any other power source, other than by human or animal power, that moves on wheels or tracks, or with the aid of wheels, and usually has a structure for transporting people or things.

- (1) Using any type of motorized wheeled vehicle prohibited by the order. It is prohibited to use any motorized wheeled vehicle on roads restricted as shown on Attachment A, Bearlodge Ranger District Travel Management Map. 36 CFR 261.54(a).
- (2) Using any type of motorized wheeled vehicle prohibited by the order. It is prohibited to use any motorized wheeled vehicle on trails as shown on Attachment A, Bearlodge Ranger District Travel Management Map. 36 CFR 261.55(b).
- (3) It is prohibited to use a motorized wheeled vehicle off forest development roads. For the purpose of this order, motorized wheeled vehicle use is prohibited off road in the travel-restricted areas as shown on Attachment A, Bearlodge Ranger District Travel Management Map. 36 CFR 261.56.

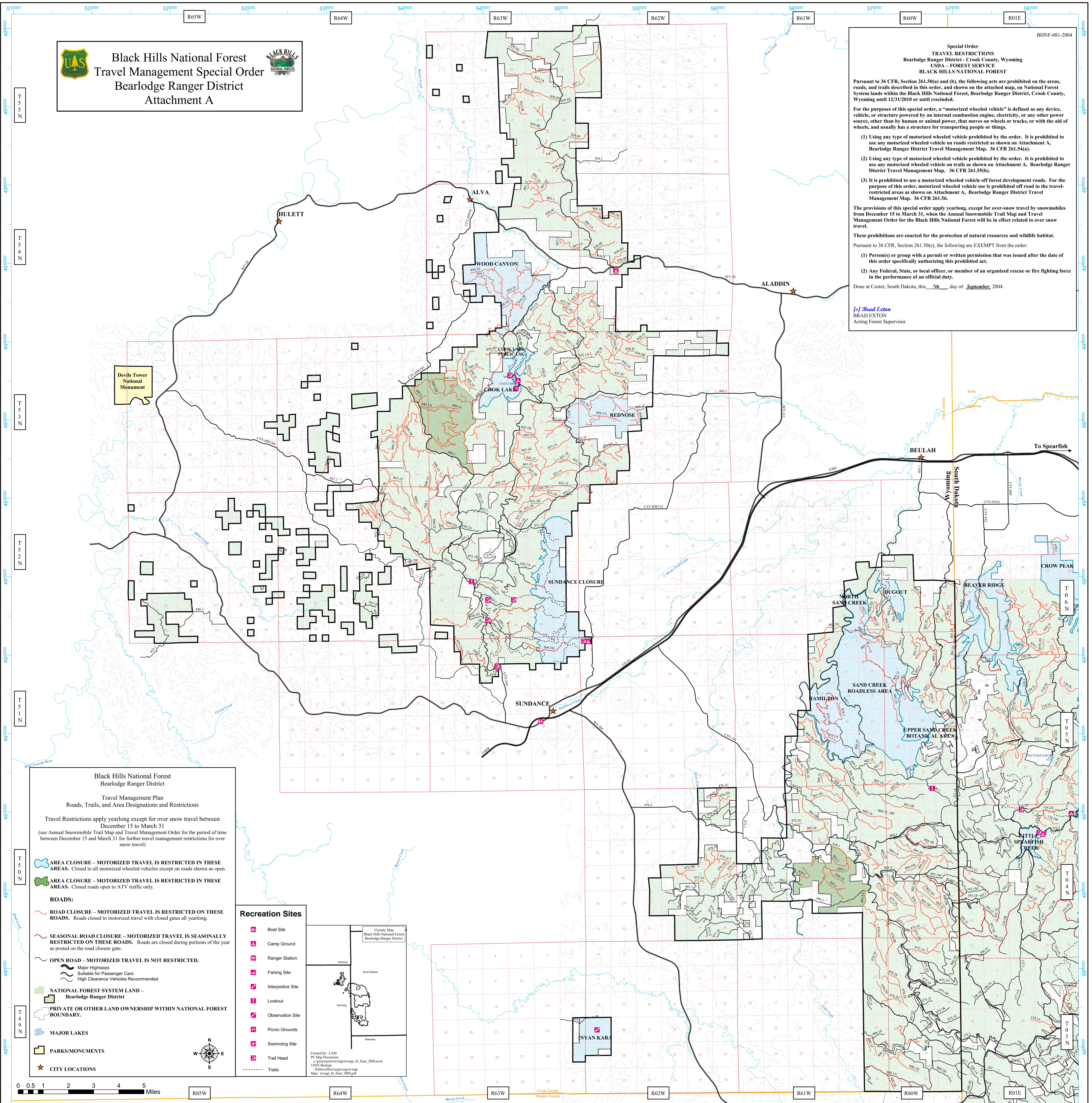
The provisions of this special order apply yearlong, except for over-snow travel by snowmobiles from December 15 to March 31, when the Annual Snowmobile Trail Map and Travel Management Order for the Black Hills National Forest will be in effect related to over snow travel.

These prohibitions are enacted for the protection of natural resources and wildlife habitat. Pursuant to 36 CFR, Section 261.50(e), the following are EXEMPT from the order:

- (1) Person(s) or group with a permit or written permission that was issued after the date of this order specifically authorizing this prohibited act.
- (2) Any Federal, State, or local officer, or member of an organized rescue or fire fighting force in the performance of an official duty.

Done at Custer, South Dakota, this 7th day of September, 2004.

*/s/ Brad Exton*  
 BRAD EXTON  
 Acting Forest Supervisor



Devils Tower National Monument

**Black Hills National Forest**  
**Bearlodge Ranger District**

**Travel Management Plan**  
**Roads, Trails, and Area Designations and Restrictions**

Travel Restrictions apply yearlong except for over snow travel between December 15 to March 31 (see Annual Snowmobile Trail Map and Travel Management Order for the period of time between December 15 and March 31 for further travel management restrictions for over snow travel)

**AREA CLOSURE - MOTORIZED TRAVEL IS RESTRICTED IN THESE AREAS.** Closed to all motorized wheeled vehicles except on roads shown as open.

**AREA CLOSURE - MOTORIZED TRAVEL IS RESTRICTED IN THESE AREAS.** Closed roads open to ATV traffic only.

**ROADS:**

**ROAD CLOSURE - MOTORIZED TRAVEL IS RESTRICTED ON THESE ROADS.** Roads closed to motorized travel with closed gates all yearlong.

**SEASONAL ROAD CLOSURE - MOTORIZED TRAVEL IS SEASONALLY RESTRICTED ON THESE ROADS.** Roads are closed during portions of the year as posted on the road closure gate.

**OPEN ROAD - MOTORIZED TRAVEL IS NOT RESTRICTED.**

**MAJOR HIGHWAYS**  
 Suitable for Passenger Cars  
 High Clearance Vehicles Recommended

**NATIONAL FOREST SYSTEM LAND - Bearlodge Ranger District**

**PRIVATE OR OTHER LAND OWNERSHIP WITHIN NATIONAL FOREST BOUNDARY.**

**MAJOR LAKES**

**PARKS/MONUMENTS**

**CITY LOCATIONS**

**Recreation Sites**

- Boat Site
- Camp Ground
- Ranger Station
- Fishing Site
- Interpretive Site
- Lookout
- Observation Site
- Picnic Grounds
- Swimming Site
- Trail Head
- Trails

**Map Information:**  
 Created by: LAM  
 PC Map Document: c:\gis\projects\trmg\trmg\_m\_final\_2004.mxd  
 UNIX Backup: r:\office\wg\wg\trmg\ Map\_Images\_M\_Final\_2004.pdf

**Vicinity Map:**  
 Black Hills National Forest  
 Bearlodge Ranger District

Map showing location within Wyoming and South Dakota.

