

TRAVEL ORDER  
 BUZZARDS ROOST TRAVEL MANAGEMENT AREA  
 BLACK HILLS NATIONAL FOREST  
 PACTOLA/HARNEY RANGER DISTRICT

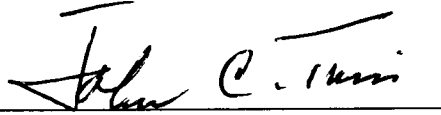
Pursuant to 36 CFR 261.50(a) and (b), the following acts are prohibited in the area, roads, trails and utility line Rights of Way in the portion of the Pactola/Harney Ranger District, Black Hills National Forest known as the Buzzards Roost area located in Sections 10, 15, and 16, T1N, R6E, BHM, in Pennington County, South Dakota. The area is shown on the attached map.

1. Possessing or using a motorized vehicle off Forest Development Roads (FDR) 596, 597, 783, Trails #11 and #35 and utility line Rights of Way. The length of the closure will be determined by vegetative response on areas severely impacted. (36 CFR 261.56)
2. Being on a road with a motorized vehicle in the travel management area when roads are closed as indicated by travel management signing on the ground. (36 CFR 261.54(a)).
3. Being on a trail with a motorized vehicle in the travel management area when trails are closed as indicated by travel management signing on the ground. (36 CFR 261.55(a)).

Pursuant to 36 CFR 261.50(e), each of the following is exempted from this order:

- (1) Persons with a permit specifically authorizing the otherwise prohibited act or omission.
- (2) Any Federal, State or local officer, or member of an organized rescue or firefighting force in the performance of an official duty.

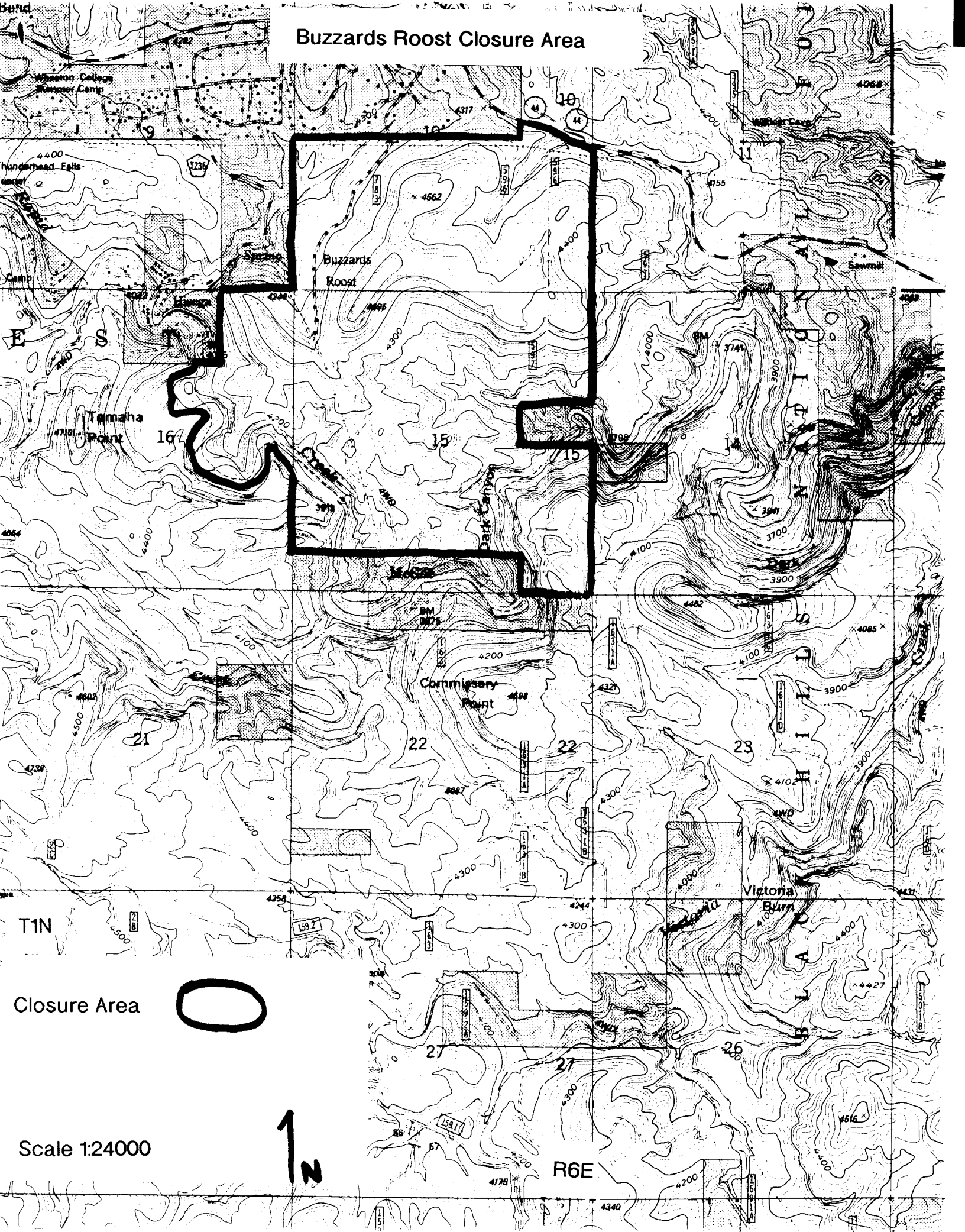
DONE at Custer, South Dakota, this 17<sup>th</sup> day of June, 1996.

  
 \_\_\_\_\_  
 JOHN C. TWISS  
 Forest Supervisor

Violation of this order is prohibited by the provisions of the regulations cited, and under 7 USC 1011(f), 16 USC 551, and 18 USC 3571. Any violation is subject to punishment by a fine of not more than \$5000 or imprisonment of not more than six months, or both.

This order supersedes the Occupancy and Use Restriction Order for the Buzzard Roost Closure Area, dated October 16, 1989, signed by Darrell L. Kenops.

# Buzzards Roost Closure Area



T1N

Closure Area

Scale 1:24000



R6E