

2000 - 2001 SNOWMOBILE TRAIL MAP WITH VEHICLE CLOSURES

TERMINATED 3/31/01
AS INDICATED IN ORDER

U.S. FOREST SERVICE
BLACK HILLS NATIONAL FOREST

SCALE 0 1 2 3 4 5 MILES

LEGEND

 SNOWMOBILE TRAIL OR ROAD CLOSED TO WHEELED VEHICLES

 CROSS-COUNTRY SKI TRAIL AREA

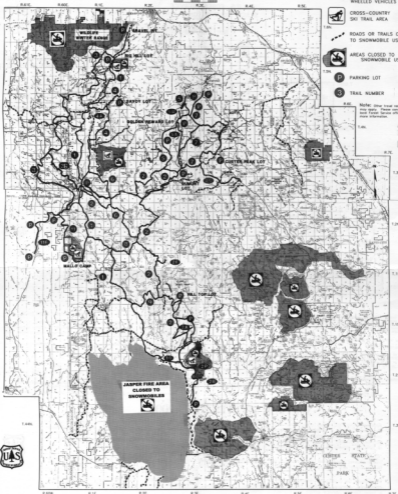
 ROADS OR TRAILS CLOSED TO SNOWMOBILE USE

 AREAS CLOSED TO SNOWMOBILE USE

 PARKING LOT

 TRAIL NUMBER

Note: Other trail restrictions may apply. Please consult your local information.



PUBLIC NOTICE - NATIONAL FOREST TRAVEL ORDER

This Order establishes travel restrictions to protect Forest resources, recreation conflicts, and promote user safety. These travel restrictions apply from December 15, 2000 to March 31, 2001 for National Forest System lands within and fully or the Black Hills National Forest (hereinafter "Map with Vehicle Closures as posted in accordance with 36 CFR 261.5).

Travel in violation of the following regulations is prohibited.

REGULATIONS

Use of wheeled vehicles on roads posted with CLOSED TO WHEELED VEHICLES sign 36 CFR Section 261.54(a);
Use of snowmobiles on roads or trails posted with CLOSED TO SNOWMOBILES sign 36 CFR 261.54(b) and 36 CFR Section 261.55(b).

Exceptions: 1. Snowmobiles may cross the above designated roads at right angles.

2. Some of the above designated roads may be opened temporarily for emergency traffic of unregistered motor vehicles and snowmobiles and snowmobile traffic do not qualify. At these times, the roads will be signed as OPEN TO SNOWMOBILES USE.

Areas closed to snowmobile use pursuant to 36 CFR Section 261.54(a) and 36 CFR 261.56.

Pursuant to 36 CFR 261.55(a), each of the following is exempted from this Order:

1. Any military, fire, rescue, or law enforcement vehicle when used for emergency purposes only.
2. Any vehicle whose use is expressly authorized by the Forest Supervisor under a permit, lease, license, contract, or for the performance of an official duty.

This order is issued from Cedar, South Dakota this 17th day of December 2000.

JOHN C. TAYLOR, Forest Supervisor

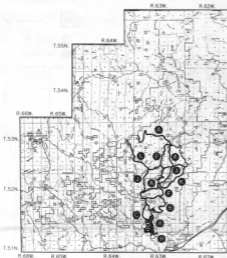
Violations of these prohibitions are punishable by a fine of not more than \$500.00 or imprisonment of not more than 6 months or both.

This Order supersedes the National Forest Travel Order, where conflicts appear between the National Forest Travel Order and this Order, the more restrictive Order applies.
This order supersedes the September 25, 1999, Snowmobile Closure Order signed by JOHN C. TAYLOR.

2000 - 2001 SNOWMOBILE TRAIL MAP WITH VEHICLE CLOSURES BEARLODGE TRAILS

U.S. FOREST SERVICE
BLACK HILLS NATIONAL FOREST

SCALE 0 1 2 3 4 5 MILES



LEGEND

SNOWMOBILE TRAIL OR ROAD CLOSED TO WHEELED VEHICLES

CROSS-COUNTRY SKI TRAIL AREA

ROADS OR TRAILS CLOSED TO SNOWMOBILE USE

AREAS CLOSED TO SNOWMOBILE USE

PARKING LOT

TRAIL NUMBER

NOTE: Other travel restrictions may apply. Please consult your local Forest Service office for more information.



PUBLIC NOTICE - NATIONAL FOREST TRAVEL ORDER

This Order establishes travel restrictions to protect forest resources, minimize conflicts, and promote user safety. These special regulations apply from December 15, 2000 to March 31, 2001 to National Forest System roads and trails per the Black Hills National Forest Snowmobile Trail Map with Vehicle Closures as posted in accordance with 36 CFR 261.503.

Travel in violation of the following regulations is prohibited.

REGULATIONS

Use of wheeled vehicles on roads posted with CLOSED TO WHEELED VEHICLES sign, 36 CFR Section 261.544(a).
Use of snowmobiles on roads or trails posted with CLOSED TO SNOWMOBILES sign 36 CFR 261.544(b) and 36 CFR Section 261.503.

Exception 1. Snowmobiles may cross the above designated roads at right angles.

2. Some of the above designated roads may be opened temporarily for snowmobile traffic or unpowered traffic when snowmobile traffic and unpowered vehicle traffic do not conflict. At these times, the roads will be signed as OPEN FOR SNOWMOBILE USE.

Areas closed to snowmobile use pursuant to 36 CFR Section 261.544(b) and 36 CFR 261.503.

Pursuant to 36 CFR 261.500, each of the following is exempt from this Order:

- Any military, fire, police, or law enforcement vehicle when used for emergency purposes; and,
- Any vehicle whose use is expressly authorized by the Forest Supervisor under a permit, lease, license, contract, or for the performance of an official duty.

This order is issued from Custer, South Dakota this 15th day of December, 2000.

John C. Tavel, Forest Supervisor

Violations of these prohibitions are punishable by a fine of not more than \$5000.00 or imprisonment of not more than 6 months or both.

This Order supplements the National Forest Travel Order. Where conflicts occur between the National Forest Travel Order and this Order, the more restrictive Order applies.

This order supersedes the September 26, 1995, Snowmobile Order signed by John C. Tavel.

WINTER SPORTS 2000 - 2001

Approximately 350 miles of marked and groomed trails are located on the Black Hills National Forest in South Dakota and Wyoming through a cooperative agreement by the U.S. Forest Service with the South Dakota Parks and Recreation Division and Wyoming State Parks and Historical Sites. Parking areas which serve this trail system are signed, paved, and have sanitary facilities, maps, and information available. During the designated snowmobile season, the groomed trail system is officially closed to wheeled vehicles.

Some groomed roads and areas are closed to snowmobiles to prevent conflicts with logging traffic and wildlife winter range. These roads are marked on the ground.

There may be additional restrictions on the occupancy and use of the National Forest. The restrictions may pertain to campfires, camping, parking, possession of animals, etc. To avoid an inconvenience, you are encouraged to contact a local Forest Service office for current information.



Forest Supervisor
89 Z, Box 200
Custer, SD 57730
(605) 673-9200

Bearlodge Ranger District
P.O. Box 683
Sunderland, WY 82729
(307) 283-1361

Hell Canyon Ranger District
1225 Washington Boulevard
Newcastle, WY 82701
(307) 746-2783

Hell Canyon Ranger District
330 Mt. Rushmore Road
Custer, SD 57730
(605) 673-4853

Mystic Ranger District
803 Soo San Drive
Rapid City, SD 57701
(605) 343-1567

Mystic Ranger District
23335 Hwy 385
Hill City, SD 57745
(605) 574-2534

Northern Hills Ranger District
2014 N. Main
Spearfish, SD 57783
(605) 642-4622

Northern Hills Ranger District
P.O. Box 407
Deadwood, SD 57732
(605) 578-2744

U.S. DEPARTMENT OF AGRICULTURE
U.S. FOREST SERVICE

Think SNOW and enjoy your National Forest.