





Trail Highlights

General Information



The Old Baldy Trail loop meanders through stands of quaking aspen, paper birch, and ponderosa pine. From the loop, the spur trail continues up to the summit of Old Baldy Mountain. The view from the top of Old Baldy Mountain includes Crow Peak to the north, Ragged Top and Terry Peak to the east and Cement Ridge Lookout to the west.

Wild turkey, white tail deer, elk, and a variety of non-game bird species are commonly sighted along this trail.

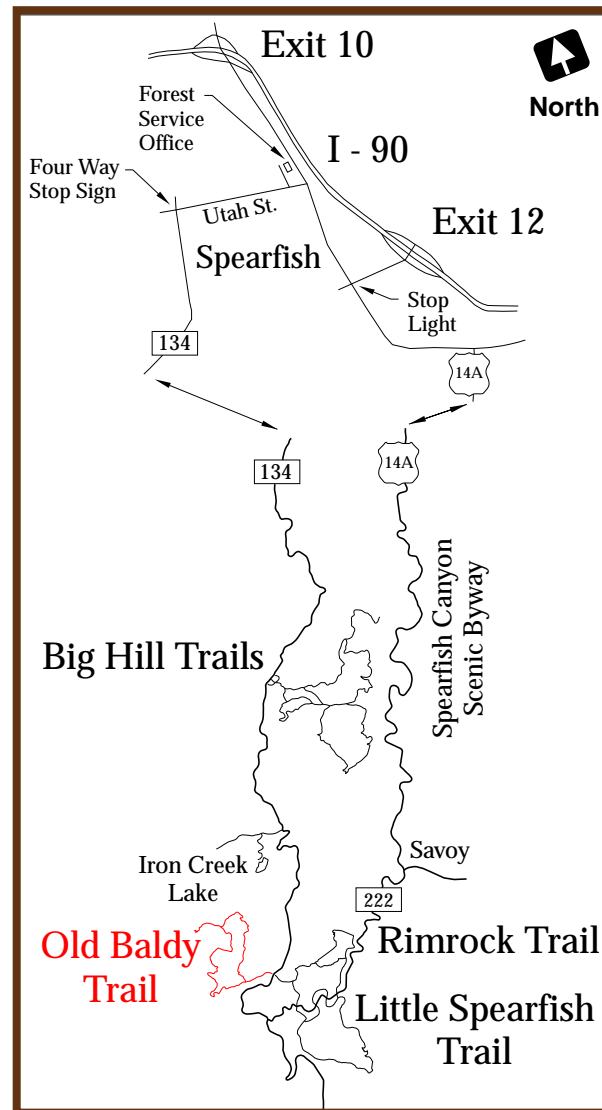
-  **Trail Ethics**
Please don't cut across switchbacks or pioneer new trails.
-  **Extreme Weather**
Clear sunny days can quickly turn into afternoon thunderstorms. Start hikes early and carry rain gear.
-  **Stream Water**
Do not drink it! Each trail user should carry at least one quart of water.
-  **Motors and Machines**
This trail is not maintained for the use of motorized vehicle traffic.

M
O
R
E
I
N
F
O
R
M
A
T
I
O
N

- ➔ Northern Hills Ranger District
2014 North Main
Spearfish, SD 57783
(605) 642-4622
- ➔ Supervisor's Office
RR2, Box 200
Custer, SD 57730
(605) 673-9200

Enjoy the National Forest, but please TREAD LIGHTLY and DON'T LITTER.

Location Map



Old Baldy Trail

Trail Number 66



Black Hills National Forest



The United States Department of Agriculture (USDA) prohibits discrimination in its programs on the basis of race, color, national origin, gender, religion, age, disability, political beliefs, sexual orientation, and marital or family status. (Not all prohibited bases apply to all programs.) Persons with disabilities who require alternative means for communication of program information (Braille, large print, audiotape, etc.) should contact USDA's TARGET Center at (202) 720-2600 (voice and TDD).

To file a complaint of program discrimination, write USDA Director, Office of Civil Rights, Room 326-W, Whitten Building, 14th and Independence Avenue, SW, Washington, DC 20250-9410, or call (202) 720-5964 (voice and TDD). USDA is an equal opportunity provider and employer.

Old Baldy Trail

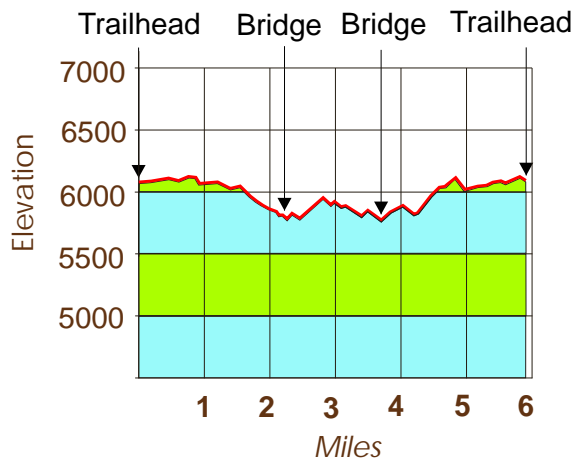
Moderate

Elevation: 5,800 to 6,096 feet

Length: 5.7 mile loop trail
0.7 mile spur trail to summit

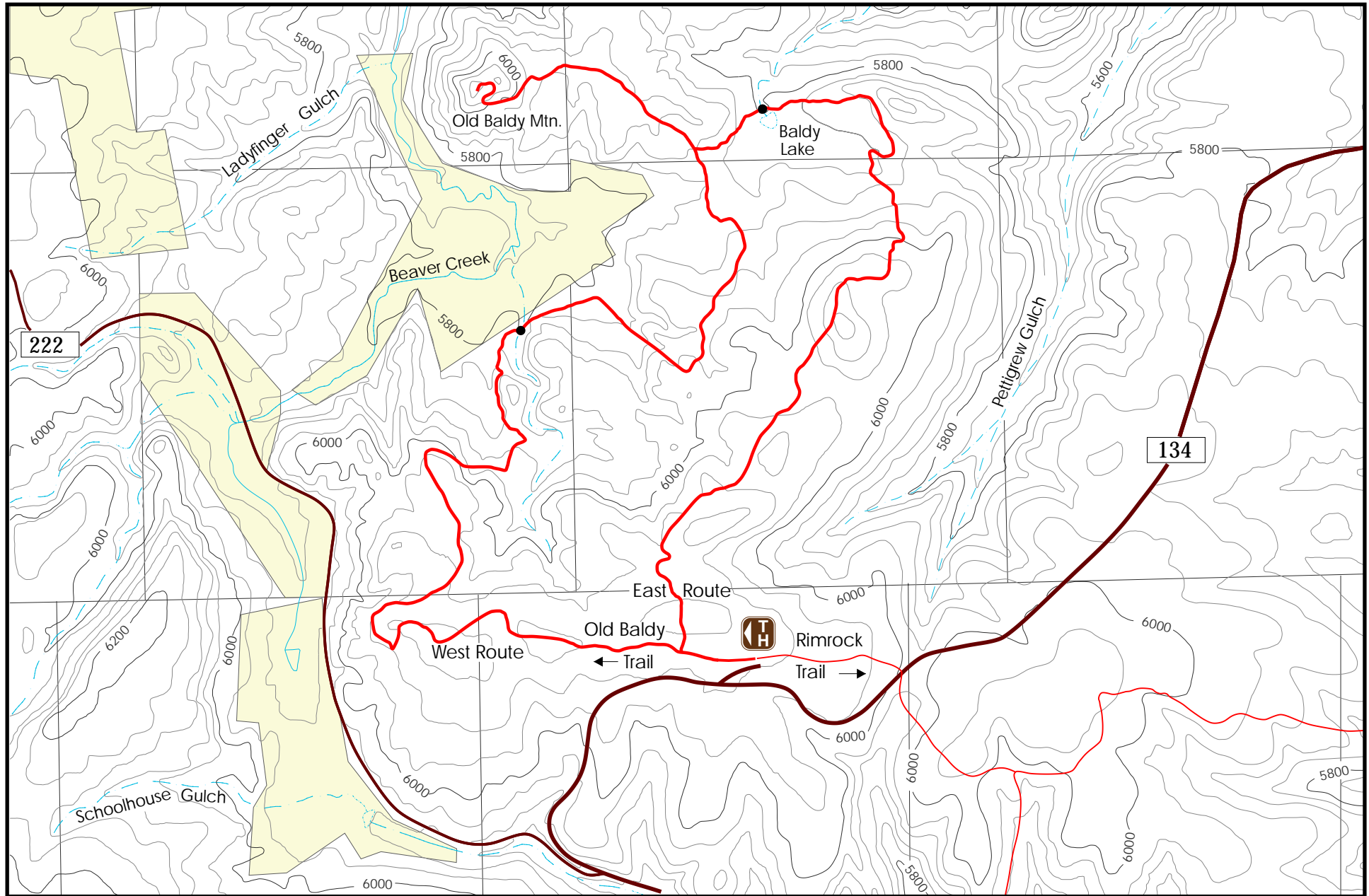
Difficulty: Moderate

Location: From Spearfish take FSR 134 for approximately 13 miles to the trailhead or from Savoy take FSR 222 for 6 miles to the intersection with FSR 134. Travel north on FSR 134 for approximately 1.1 miles to the trailhead.



* Profile for the loop is clockwise around the loop

Profile of spur trail to Old Baldy Summit is not shown. Elevation gain to summit from main trail is 234 feet.



MAP LEGEND

Trail

Creek

County Road

Forest Service Road (FSR)



Trailhead



Private Land

Bridge Locations

Scale - 3" = 1 mile

