

Department of Human Services
Addictions and Mental Health Division



Oregon Health Plan Mental Health Utilization Report

January 2006 through December 2006
*Data covers a full
MHO Contract Year*

Report Produced Quarterly by
Program Analysis and Evaluation Team
JULY 2007

EXECUTIVE SUMMARY
REPORT ON OREGON HEALTH PLAN (OHP)
UTILIZATION AND ENROLLMENT FOR
MENTAL HEALTH SERVICES:
JANUARY 2006 THROUGH DECEMBER 2006

The Mental Health Organization (MHO) Utilization Quarterly Report for the period of January 1, 2006 through December 31, 2006, contains enrollment, unique served and hospitalization data. The data for this report were pulled July 10, 2007. All information came from the Division of Medical Assistance Programs' (DMAP) Decision Support/Surveillance and Utilization Review System (DSSURS) and is comparable to the report released in April 2007.

Population

- This report reflects only Medicaid members who were eligible, enrolled, and received mental health services during the report period.
- The acute care admission population is any enrolled Medicaid member who was admitted for inpatient psychiatric treatment.
- Those who are receiving mental health services and alcohol and drug treatment are included in this report.

Limitations

- This report does not include tests of the statistical significance of apparent differences among providers or across time periods.
- The report is a “snap-shot” in time for the specific report being created and is comparable to the report released in April 2007.
- Acute hospitalization data includes and is not limited to transfers from one facility to another and/or re-admitted within a 24-hour time frame.
- There is a 180-day lag between the times a service is delivered and the time the services is contractually required to be billed.

Formula

- The calculations for the unique enrollees and/or served is dividing the number of total enrollees by the number served within the same time period.
- The penetration rate, or percentage rate, is a general measure of access and is related to the utilization of services.

Report Schedule

This report is created on a quarterly basis.

TABLE OF CONTENTS

The format and contents are constructed as follows:

- Figures are used to illustrate trends in statewide data.
- Tables are used to summarize quarterly data at the MHO level. Some tables include FFS and All Eligibles.



Executive Summary	i
-------------------------	---

Enrollment Data:

Table 1: Unique Members Enrolled by MHO	1
Figure 1: Total Unique Members Enrolled by Age Groups	1
Table 2: Unique Members Enrolled by Age Groups/MHO	2
Enrollment Numbers per Month	3

Served Data:

Table 3: Unique Members Served by MHO and Percentage Rate	4
Figure 2: Total Unique Members Served by Age Groups	4
Table 4: Unique Served by MHO/Age Group and Percentage Rate	5
Figure 3: Total Unique Served by Ethnicity	6
Table 5: Unique Served by MHO/Ethnicity and Percentage Rate	6
Figure 4: Total All Quarters: Unique Encounters by Diagnostic Groups	9
Table 6: Unique Served Encounters by MHO/Diagnostic Groups	9
Unique Members Served per Month	10

Hospital Data:

Table 7: Unique Hospital Admissions per 1,000 Members Enrolled	11
Table 8: Unique Hospital Admissions: Age Groups per 1,000 Members Enrolled ...	11
Table 9: Average Hospital Days of Service	12
Table 10: Average Hospital Days by MHO/Age Group	13
Table 11: Percent of Hospital Re-Admission within 30 days	14
Table 12: Total Hospital Re-Admission within 180 days	14
Figure 5: Total Seen by Outpatient within 7 Days of Hospital Discharge	15
Table 13: Seen by Outpatient within 7 Days of Hospital Discharge	15

Glossaries:

MHO Utilization Report Glossary	16
Diagnostic Categories Glossary	18
Service Categories Glossary	21

ENROLLMENT DATA

- ❖ Enrolled: Eligible for OHP and enrolled in an MHO
- ❖ Eligibles: Both Enrolled and FFS
- ❖ Fee-For-Service (FFS): Eligible for OHP and NOT enrolled with an MHO (Open Card)



TABLE 1: UNIQUE MEMBERS ENROLLED BY MHO

MHO Contractors	2006							
	1 st Qtr	% Enrolled	2 nd Qtr	% Enrolled	3 rd Qtr	% Enrolled	4 th Qtr	% Enrolled
ABHA	26,582	7.1%	26,771	7.1%	27,758	7.1%	26,726	7.1%
Clackamas	25,488	6.8%	25,637	6.8%	26,474	6.8%	25,556	6.7%
FamilyCare	10,765	2.9%	10,639	2.8%	11,297	2.9%	10,861	2.9%
GOBHI	31,714	8.5%	31,917	8.5%	32,981	8.5%	31,996	8.4%
JBH	65,280	17.4%	65,088	17.3%	66,921	17.2%	65,275	17.2%
LaneCare	35,604	9.5%	35,681	9.5%	37,089	9.5%	36,217	9.6%
MVBCN	72,828	19.4%	73,546	19.5%	76,100	19.5%	74,419	19.6%
Verity	73,787	19.7%	73,827	19.6%	76,552	19.6%	74,458	19.7%
Washington	32,940	8.8%	33,419	8.9%	34,439	8.8%	33,310	8.8%
Total Enrolled	374,988	100.0%	376,525	100.0%	389,611	100.0%	378,818	100.0%

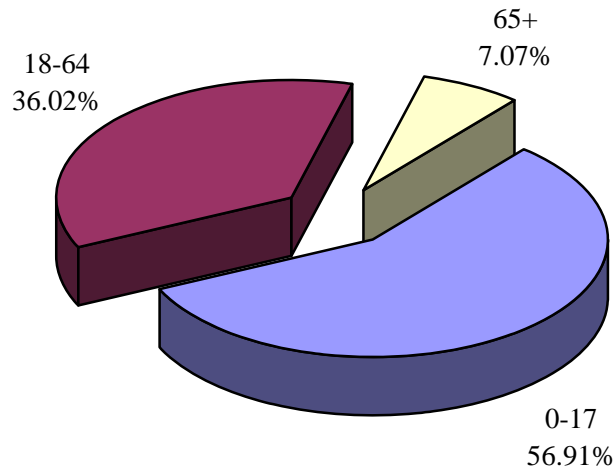
n=Unique Enrolled/d=Total Enrolled

	1 st Qtr	% All Eligibles	2 nd Qtr	% All Eligibles	3 rd Qtr	% All Eligibles	4 th Qtr	% All Eligibles
Total Enrolled	374,988	89.2%	376,525	89.7%	389,611	93.6%	378,818	92.8%
FFS ³	45,485	10.8%	43,143	10.3%	26,585	6.4%	29,213	7.2%
All Eligibles²	420,473		419,668		416,196		408,031	

n=Total Enrolled/d=All Eligibles

n=FFS/d=All Eligibles

FIGURE 1: TOTAL UNIQUE MEMBERS ENROLLED BY AGE GROUPS



³ Fee-For-Service (FFS): Eligible for OHP and NOT enrolled with an MHO (Open Card)

² Eligibles: Both Enrolled and FFS

TABLE 2: UNIQUE MEMBERS Enrolled¹ by Age Groups & Percentage by MHO Total

MHO Contractors	Age Groups	2006							
		1 st Qtr	% by MHO Qtr Total ²	2 nd Qtr	% by MHO Qtr Total	3 rd Qtr	% by MHO Qtr Total	4 th Qtr	% by MHO Qtr Total
ABHA	0-17	14,975	56.3%	15,250	57.0%	16,169	58.2%	15,674	58.6%
	18-64	9,862	37.1%	9,795	36.6%	9,854	35.5%	9,363	35.0%
	65 +	1,745	6.6%	1,726	6.4%	1,735	6.3%	1,689	6.3%
Clackamas	0-17	14,499	56.9%	14,838	57.9%	15,577	58.8%	15,036	58.8%
	18-64	8,811	34.6%	8,630	33.7%	8,643	32.6%	8,293	32.5%
	65 +	2,178	8.5%	2,169	8.5%	2,254	8.5%	2,227	8.7%
FamilyCare	0-17	5,903	54.8%	5,886	55.3%	6,355	56.3%	6,165	56.8%
	18-64	4,458	41.4%	4,317	40.6%	4,480	39.7%	4,246	39.1%
	65 +	404	3.8%	436	4.1%	462	4.1%	450	4.1%
GOBHI	0-17	18,110	57.1%	18,468	57.9%	19,380	58.8%	18,933	59.2%
	18-64	11,281	35.6%	11,159	35.0%	11,318	34.3%	10,785	33.7%
	65 +	2,323	7.3%	2,290	7.2%	2,283	6.9%	2,278	7.1%
JBH	0-17	34,117	52.3%	34,524	53.0%	36,118	54.0%	35,501	54.4%
	18-64	26,539	40.7%	26,030	40.0%	26,229	39.2%	25,217	38.6%
	65 +	4,624	7.1%	4,534	7.0%	4,574	6.8%	4,557	7.0%
LaneCare	0-17	18,377	51.6%	18,646	52.3%	19,746	53.2%	19,487	53.8%
	18-64	15,220	42.7%	15,059	42.2%	15,300	41.3%	14,678	40.5%
	65 +	2,007	5.6%	1,976	5.5%	2,043	5.5%	2,052	5.7%
MVBCN	0-17	43,486	59.7%	44,522	60.5%	46,670	61.3%	46,045	61.9%
	18-64	24,827	34.1%	24,577	33.4%	24,870	32.7%	23,798	32.0%
	65 +	4,515	6.2%	4,447	6.0%	4,560	6.0%	4,576	6.1%
Verity	0-17	38,737	52.5%	39,337	53.3%	41,615	54.4%	40,777	54.8%
	18-64	28,585	38.7%	28,059	38.0%	28,457	37.2%	27,230	36.6%
	65 +	6,465	8.8%	6,431	8.7%	6,480	8.5%	6,451	8.7%
Washington	0-17	20,794	63.1%	21,337	63.8%	22,275	64.7%	21,620	64.9%
	18-64	9,540	29.0%	9,477	28.4%	9,480	27.5%	9,011	27.1%
	65 +	2,606	7.9%	2,605	7.8%	2,684	7.8%	2,679	8.0%
Total by Quarter	0-17	208,998	55.7%	212,808	56.5%	223,905	57.5%	219,238	57.9%
	18-64	139,123	37.1%	137,103	36.4%	138,631	35.6%	132,621	35.0%
	65 +	26,867	7.2%	26,614	7.1%	27,075	6.9%	26,959	7.1%

¹ Enrolled: Eligible for OHP and enrolled in an MHO² Percentage formula: n=unique enrolled by age group/d=MHO total enrolled

ENROLLMENT NUMBERS PER MONTH

MHO Contractor	Jan-06	Feb-06	Mar-06	Apr-06	May-06	Jun-06	Jul-06	Aug-06	Sep-06	Oct-06	Nov-06	Dec-06
ABHA	23,653	23,902	23,914	23,902	23,809	23,867	25,031	25,404	24,677	25,071	24,459	23,362
Clackamas	22,886	22,706	22,733	22,795	22,891	22,925	24,214	24,719	23,912	24,238	23,650	22,768
FamilyCare	9,407	9,437	9,382	9,290	9,359	9,390	9,776	10,154	10,240	10,283	10,095	9,913
GOBHI	28,099	28,467	28,296	28,517	28,477	28,485	29,721	30,331	29,349	29,838	29,128	27,996
JBH	58,506	58,694	58,371	58,602	58,374	58,736	60,836	61,897	60,100	61,319	60,613	58,374
LaneCare	32,175	32,399	31,963	32,227	32,228	32,373	33,900	34,421	33,318	34,187	33,521	32,282
MVBCN	65,232	65,404	65,137	65,880	65,677	66,183	68,925	69,581	67,743	69,458	68,520	66,025
Verity	67,267	67,233	66,801	66,604	66,411	67,245	69,533	70,887	68,897	70,239	69,235	66,647
Washington	29,165	29,133	28,946	29,290	29,232	29,669	30,672	31,194	29,978	30,940	30,345	28,698
Monthly Totals	336,390	337,375	335,543	337,107	336,458	338,873	352,608	358,588	348,214	355,573	349,566	336,065

% Monthly Increase/Decrease	0.29%	-0.55%	0.46%	-0.19%	0.71%	3.90%	1.67%	-2.98%	2.07%	-1.72%	-4.02%
-----------------------------	-------	--------	-------	--------	-------	-------	-------	--------	-------	--------	--------

Eligibles	419,877	419,827	421,714	419,950	419,888	419,167	418,129	416,339	414,120	411,025	408,677	404,390
FFS	83,487	82,452	86,171	82,843	83,430	80,294	65,521	57,751	65,906	55,452	59,111	68,325

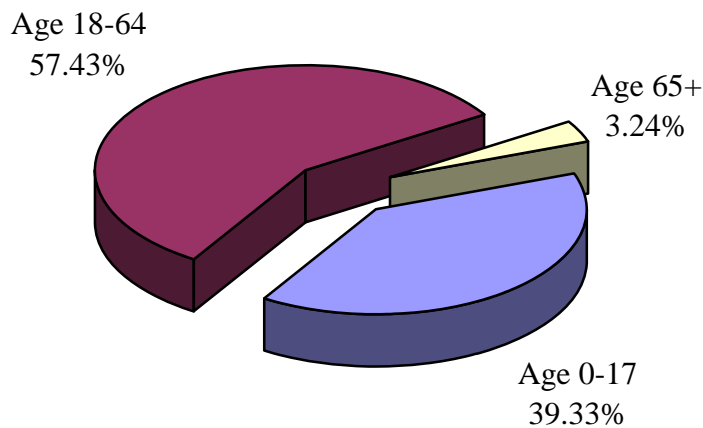
SERVICE DATA



TABLE 3: UNIQUE MEMBERS SERVED BY MHO AND PERCENTAGE² OF ENROLLEES SERVED

MHO Contractors	2006							
	1 st Qtr	% Rate	2 nd Qtr	% Rate	3 rd Qtr	% Rate	4 th Qtr	% Rate
ABHA	1,969	7.4%	1,944	7.3%	1,921	6.9%	1,871	7.0%
Clackamas	1,771	6.9%	1,761	6.9%	1,650	6.2%	1,630	6.4%
FamilyCare	559	5.2%	512	4.8%	568	5.0%	547	5.0%
GOBHI	2,459	7.8%	2,519	7.9%	2,275	6.9%	2,241	7.0%
JBH	4,565	7.0%	4,705	7.2%	4,647	6.9%	4,551	7.0%
LaneCare	3,850	10.8%	3,952	11.1%	3,827	10.3%	3,855	10.6%
MVBCN	4,996	6.9%	5,002	6.8%	4,989	6.6%	4,940	6.6%
Verity	6,125	8.3%	6,444	8.7%	6,299	8.2%	6,472	8.7%
Washington	2,253	6.8%	2,429	7.3%	2,284	6.6%	2,244	6.7%
Total Served	28,547	7.6%	29,268	7.8%	28,460	7.3%	28,351	7.5%
FFS	676	1.5%	672	1.6%	761	2.9%	700	2.4%

FIGURE 2: TOTAL UNIQUE MEMBERS SERVED BY AGE GROUPS



² Percentage Formula: n=Unique Served/d=Unique Enrolled.

TABLE 4: UNIQUE¹ SERVED BY MHO/AGE GROUP AND PERCENTAGE² OF ENROLLEES SERVED

MHO Contractors	Age Groups	2006							
		1 st Qtr	Rate	2 nd Qtr	Rate	3 rd Qtr	Rate	4 th Qtr	Rate
ABHA	0-17	778	5.2%	825	5.4%	769	4.8%	780	5.0%
	18-64	1,138	11.5%	1,078	11.0%	1,117	11.3%	1,047	11.2%
	65+	53	3.0%	41	2.4%	35	2.0%	44	2.6%
Clackamas	0-17	635	4.4%	698	4.7%	668	4.3%	692	4.6%
	18-64	1,084	12.3%	1,023	11.9%	943	10.9%	896	10.8%
	65+	52	2.4%	40	1.8%	39	1.7%	42	1.9%
FamilyCare	0-17	227	3.8%	247	4.2%	265	4.2%	261	4.2%
	18-64	330	7.4%	263	6.1%	300	6.7%	284	6.7%
	65+	2	0.5%	2	0.5%	3	0.6%	2	0.4%
GOBHI	0-17	1,027	5.7%	1,109	6.0%	944	4.9%	969	5.1%
	18-64	1,357	12.0%	1,338	12.0%	1,255	11.1%	1,206	11.2%
	65+	75	3.2%	72	3.1%	76	3.3%	66	2.9%
JBH	0-17	1,685	4.9%	1,858	5.4%	1,763	4.9%	1,799	5.1%
	18-64	2,770	10.4%	2,746	10.5%	2,774	10.6%	2,654	10.5%
	65+	110	2.4%	101	2.2%	110	2.4%	98	2.2%
LaneCare	0-17	1,548	8.4%	1,598	8.6%	1,496	7.6%	1,543	7.9%
	18-64	2,237	14.7%	2,290	15.2%	2,262	14.8%	2,242	15.3%
	65+	65	3.2%	64	3.2%	69	3.4%	70	3.4%
MVBCN	0-17	2,019	4.6%	2,097	4.7%	2,075	4.4%	2,118	4.6%
	18-64	2,817	11.3%	2,755	11.2%	2,761	11.1%	2,676	11.2%
	65+	160	3.5%	150	3.4%	153	3.4%	146	3.2%
Verity	0-17	2,157	5.6%	2,363	6.0%	2,241	5.4%	2,294	5.6%
	18-64	3,645	12.8%	3,734	13.3%	3,712	13.0%	3,839	14.1%
	65+	323	5.0%	347	5.4%	346	5.3%	339	5.3%
Washington	0-17	837	4.0%	921	4.3%	864	3.9%	912	4.2%
	18-64	1,309	13.7%	1,397	14.7%	1,320	13.9%	1,232	13.7%
	65+	107	4.1%	111	4.3%	100	3.7%	100	3.7%
Total Served	0-17	10,913	5.2%	11,716	5.5%	11,085	5.0%	11,368	5.2%
	18-64	16,687	12.0%	16,624	12.1%	16,444	11.9%	16,076	12.1%
	65+	947	3.5%	928	3.5%	931	3.4%	907	3.4%

¹ Unique Served: All duplicate records are removed.² Percentage Formula: n=Unique Served/d=Unique Enrolled.

FIGURE 3: TOTAL UNIQUE¹ SERVED BY ETHNICITY

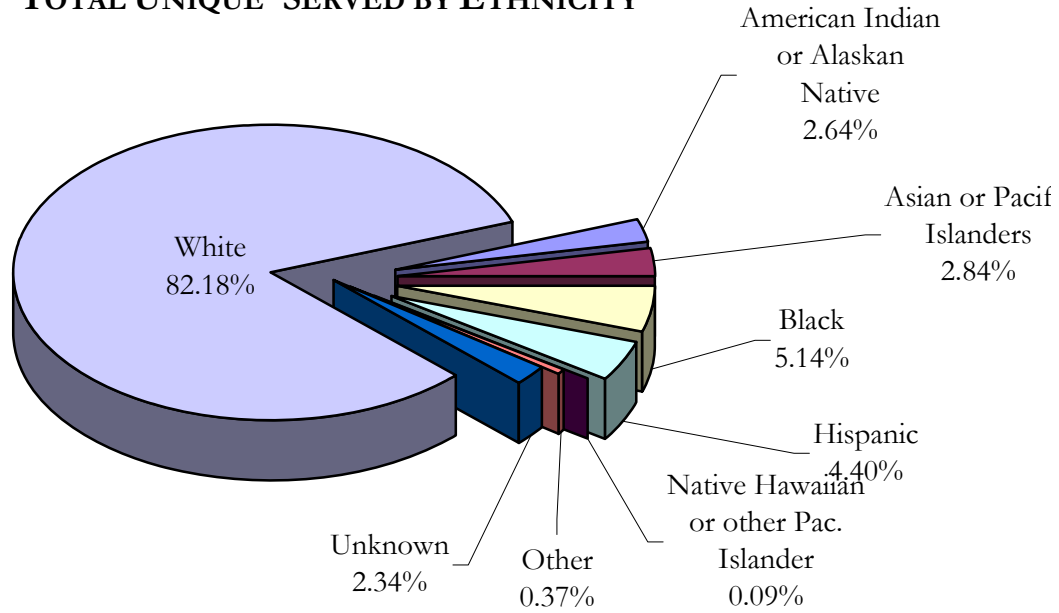


TABLE 5: UNIQUE SERVED BY MHO/ETHNICITY AND PERCENTAGE² OF ENROLLEES SERVED

MHO	Race Description	2006							
		1 st Qtr	Rate	2 nd Qtr	Rate	3 rd Qtr	Rate	4 th Qtr	Rate
ABHA	Am. Indian/Alaskan Ntv	35	3.4%	44	4.2%	49	4.4%	38	3.8%
	Asian or Pacific Islanders	6	2.4%	8	3.2%	7	2.7%	7	2.8%
	Black	21	6.4%	21	6.5%	25	7.4%	16	5.1%
	Hispanic	51	1.5%	41	1.2%	53	1.5%	32	0.9%
	Ntv Hawaiian/Pac. Islander	1	3.1%	1	2.5%	3	7.9%	2	5.9%
	Other	5	4.8%	5	5.1%	5	5.6%	3	3.5%
	Unknown	52	30.4%	55	31.8%	60	30.6%	68	36.6%
	White	1,798	8.3%	1,769	8.2%	1,719	7.7%	1,705	7.9%
Clackamas	Am. Indian/Alaskan Ntv	32	8.1%	30	7.4%	30	6.6%	35	9.4%
	Asian or Pacific Islanders	20	3.9%	25	5.2%	20	3.9%	20	3.8%
	Black	33	6.2%	34	6.4%	38	6.4%	42	7.3%
	Hispanic	63	1.3%	87	1.7%	71	1.3%	62	1.2%
	Ntv Hawaiian/Pac. Islander	3	5.0%	4	7.7%	3	4.9%	3	4.7%
	Other	4	3.1%	5	4.0%	4	3.3%	6	4.9%
	Unknown	20	10.3%	22	10.8%	26	11.2%	36	15.6%
	White	1,596	8.4%	1,554	8.2%	1,458	7.4%	1,426	7.5%

¹ Unique Served: All duplicate records are removed.

² Percentage Formula: n=Unique Served/d=Unique Enrolled.

TABLE 5: UNIQUE¹ SERVED BY MHO/ETHNICITY AND PERCENTAGE² OF ENROLLEES SERVED (*continued*)

MHO	Race Description	2006							
		1 st Qtr	Rate	2 nd Qtr	Rate	3 rd Qtr	Rate	4 th Qtr	Rate
FamilyCare	Am. Indian/Alaskan Ntv	11	6.7%	15	8.6%	17	10.1%	15	9.0%
	Asian or Pacific Islanders	27	4.2%	11	1.7%	23	3.4%	23	3.4%
	Black	48	4.0%	45	4.1%	50	4.1%	43	3.6%
	Hispanic	19	1.6%	15	1.3%	19	1.4%	16	1.1%
	Ntv Hawaiian/Pac. Islander	0	0.0%	0	0.0%	0	0.0%	1	1.5%
	Other	0	0.0%	0	0.0%	2	2.0%	2	2.2%
	Unknown	5	7.6%	5	7.7%	11	13.3%	13	14.6%
	White	449	6.0%	421	5.6%	446	5.8%	434	5.7%
GOBHI	Am. Indian/Alaskan Ntv	59	7.4%	66	8.2%	54	6.5%	53	7.5%
	Asian or Pacific Islanders	13	7.2%	12	6.8%	14	7.1%	14	7.7%
	Black	26	8.3%	23	7.3%	20	5.7%	23	6.6%
	Hispanic	156	2.3%	160	2.3%	131	1.8%	136	1.9%
	Ntv Hawaiian/Pac. Islander	0	0.0%	3	6.1%	3	5.6%	3	4.8%
	Other	6	7.3%	10	11.1%	11	11.2%	9	9.6%
	Unknown	53	18.7%	52	18.7%	48	15.6%	43	14.1%
	White	2,146	9.2%	2,193	9.4%	1,994	8.3%	1,960	8.4%
JBH	Am. Indian/Alaskan Ntv	140	6.7%	144	6.9%	143	6.7%	137	7.0%
	Asian or Pacific Islanders	16	4.7%	15	4.5%	14	3.7%	15	4.2%
	Black	53	7.8%	59	8.6%	50	6.9%	43	5.9%
	Hispanic	153	2.7%	150	2.6%	133	2.2%	119	2.0%
	Ntv Hawaiian/Pac. Islander	4	4.3%	3	2.9%	1	1.0%	3	3.1%
	Other	12	5.5%	12	5.8%	11	5.2%	11	5.4%
	Unknown	106	15.0%	121	16.7%	140	17.5%	164	21.3%
	White	4,081	7.3%	4,201	7.6%	4,155	7.3%	4,059	7.3%
LaneCare	Am. Indian/Alaskan Ntv	70	10.6%	81	12.2%	80	11.9%	78	12.6%
	Asian or Pacific Islanders	28	5.6%	29	5.9%	26	5.3%	21	4.5%
	Black	98	11.0%	106	11.8%	91	9.6%	96	10.1%
	Hispanic	109	3.7%	108	3.7%	104	3.4%	106	3.4%
	Ntv Hawaiian/Pac. Islander	0	0.0%	1	2.6%	1	2.3%	1	2.0%
	Other	19	10.2%	18	9.3%	21	11.5%	21	11.2%
	Unknown	127	25.6%	139	26.7%	130	23.2%	125	23.4%
	White	3,399	11.4%	3,470	11.6%	3,374	10.9%	3,407	11.2%

¹ Unique Served: All duplicate records are removed.

² Percentage Formula: n=Unique Served/d=Unique Enrolled.

Data Source: DSSURS – Data Pulled: 7/10/07

TABLE 5: UNIQUE¹ SERVED BY MHO/ETHNICITY AND PERCENTAGE² OF ENROLLEES SERVED (*continued*)

MHO	Race Description	2006							
		1 st Qtr	Rate	2 nd Qtr	Rate	3 rd Qtr	Rate	4 th Qtr	Rate
MVBCN	Am. Indian/Alaskan Ntv	137	11.4%	135	11.3%	132	10.8%	117	10.4%
	Asian or Pac. Islanders	48	5.1%	48	5.1%	47	4.9%	42	4.5%
	Black	86	8.3%	98	9.3%	86	7.7%	95	8.7%
	Hispanic	288	1.6%	321	1.7%	313	1.6%	320	1.6%
	Ntv Hawaiian/Pac. Islander	11	5.8%	13	6.3%	6	2.5%	8	3.5%
	Other	11	3.8%	14	5.2%	8	3.0%	12	5.0%
	Unknown	68	14.5%	76	16.3%	93	17.2%	98	18.1%
	White	4,347	8.7%	4,297	8.6%	4,304	8.4%	4,248	8.5%
Verity	Am. Indian/Alaskan Ntv	244	17.1%	235	16.3%	223	14.9%	226	16.6%
	Asian or Pacific Islanders	519	9.0%	551	9.7%	545	9.5%	538	9.6%
	Black	936	7.6%	988	8.0%	992	7.7%	1,032	8.2%
	Hispanic	233	2.0%	257	2.1%	267	2.1%	284	2.3%
	Ntv Hawaiian/Pac. Islander	3	2.0%	1	0.6%	4	2.0%	4	1.9%
	Other	32	5.9%	30	5.5%	24	4.2%	23	4.3%
	Unknown	99	18.2%	91	16.3%	107	17.1%	124	19.8%
	White	4,059	9.9%	4,291	10.5%	4,137	9.9%	4,241	10.5%
Washington	Am. Indian/Alaskan Ntv	30	11.9%	30	10.9%	32	11.3%	27	11.3%
	Asian or Pacific Islanders	128	6.5%	129	6.6%	125	6.4%	119	6.3%
	Black	113	7.5%	124	8.1%	117	7.4%	118	7.9%
	Hispanic	167	1.5%	184	1.6%	156	1.3%	161	1.4%
	Ntv Hawaiian/Pac. Islander	3	2.9%	4	3.4%	2	1.4%	3	2.0%
	Other	19	7.3%	16	5.6%	20	7.1%	18	6.6%
	Unknown	69	20.8%	80	23.3%	76	20.4%	84	24.9%
	White	1,724	10.0%	1,862	10.8%	1,756	10.0%	1,714	10.2%
Total Served	Am. Indian/Alaskan Ntv	758	9.5%	780	9.6%	760	9.1%	726	9.6%
	Asian or Pacific Islanders	805	7.2%	828	7.6%	821	7.3%	799	7.3%
	Black	1,414	7.5%	1,498	8.0%	1,469	7.5%	1,508	7.8%
	Hispanic	1,239	1.9%	1,323	1.9%	1,247	1.8%	1,236	1.8%
	Ntv Hawaiian/Pac. Islander	25	3.4%	30	3.7%	23	2.5%	28	2.9%
	Other	108	5.7%	110	5.8%	106	5.5%	105	5.7%
	Unknown	599	18.4%	641	19.2%	691	18.6%	755	20.9%
	White	23,599	8.9%	24,058	9.1%	23,343	8.6%	23,194	8.8%

¹ Unique Served: All duplicate records are removed.

² Percentage Rate Formula: n=Unique Served/d=Unique Enrolled.

FIGURE 4: TOTAL ALL QUARTERS: UNIQUE ENCOUNTERS BY DIAGNOSTIC GROUPS

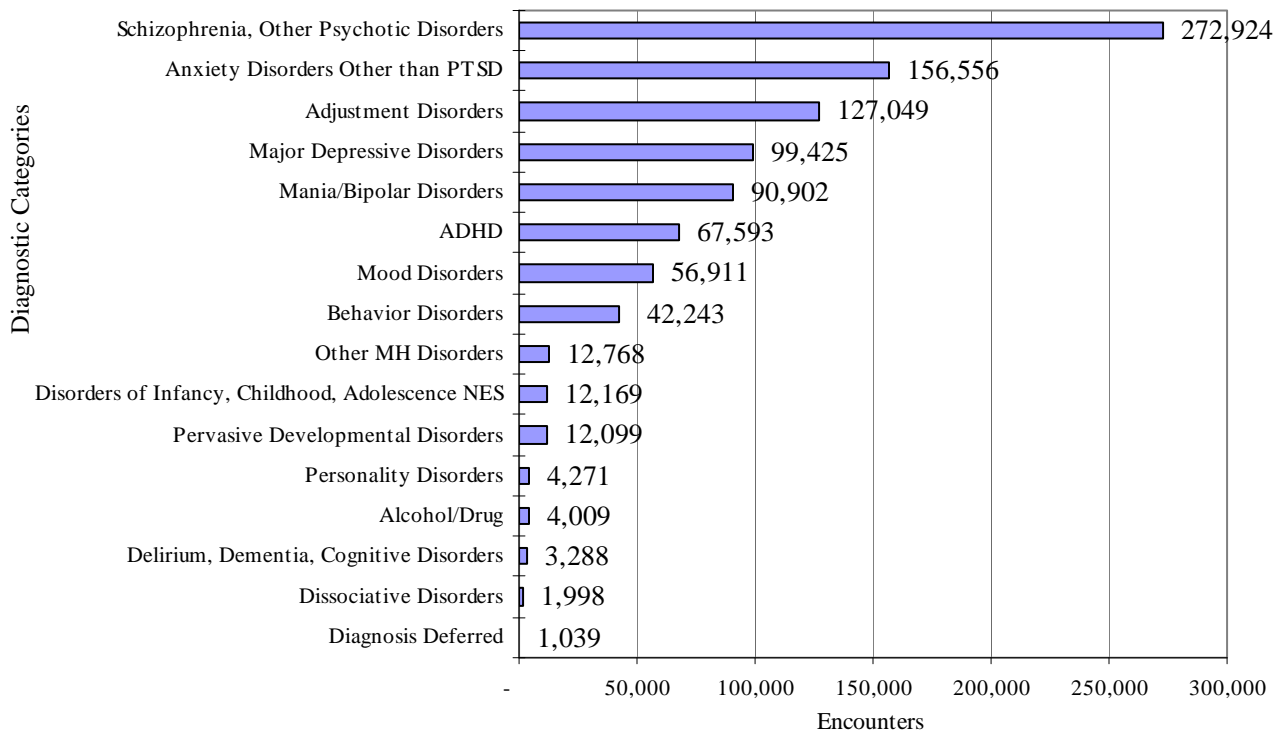


TABLE 6: UNIQUE¹ SERVED ENCOUNTERS² BY MHO/DIAGNOSTIC GROUPS IN ASCENDING ORDER BASED ON THE FOURTH QUARTER 2006

MHO Contractors	Diagnostic Group	2006			
		1 st Qtr	2 nd Qtr	3 rd Qtr	4 th Qtr
Total Encounters	Schizophrenia, Other Psychotic Disorders	68,149	66,916	69,211	68,648
	Anxiety Disorders Other than PTSD	37,742	39,886	38,788	40,140
	Adjustment Disorders	31,954	33,848	29,470	31,777
	Major Depressive Disorders	24,947	25,977	24,634	23,867
	Mania/Bipolar Disorders	22,418	22,592	22,914	22,978
	ADHD	17,147	17,467	15,419	17,560
	Mood Disorders	13,998	14,935	13,942	14,036
	Behavior Disorders	9,442	11,298	10,227	11,276
	Other MH Disorders	3,165	3,247	2,965	3,391
	Disorders of Infancy, Childhood, Adolescence NES	2,599	3,020	3,376	3,174
	Pervasive Developmental Disorders	3,039	2,978	2,933	3,149
	Personality Disorders	1,065	953	1,127	1,126
	Alcohol/Drug	981	1,183	1,012	833
	Delirium, Dementia, Cognitive Disorders	934	894	737	723
	Dissociative Disorders	456	541	508	493
	Diagnosis Deferred	228	309	231	271

¹ Unique Served: All duplicate records are removed.

² Encounters: A contact or admission for covered services to OHP Member – can be 1 or more per member.

Data Source: DSSURS – Data Pulled: 7/10/07

UNIQUE MEMBERS SERVED PER MONTH

MHO Contractors	2006											
	Jan	Feb	Mar	Apr	May	Jun	Jul	Aug	Sep	Oct	Nov	Dec
ABHA	1,281	1,353	1,404	1,307	1,338	1,323	1,275	1,324	1,208	1,338	1,289	1,144
Clackamas	1,210	1,202	1,253	1,209	1,184	1,170	1,104	1,204	847	925	1,152	1,122
FamilyCare	370	330	360	331	330	354	358	385	384	397	371	338
GOBHI	1,699	1,657	1,704	1,757	1,686	1,689	1,528	1,601	1,527	1,621	1,533	1,436
JBH	3,155	3,082	3,294	3,163	3,330	3,238	3,021	3,222	3,115	3,319	3,187	2,654
LaneCare	2,890	2,875	2,978	2,958	3,079	2,978	2,781	2,881	2,808	2,995	2,983	2,752
MVBCN	3,444	3,407	3,603	3,445	3,375	3,455	3,359	3,512	3,404	3,586	3,512	3,283
Verity	4,247	4,172	4,514	4,441	4,722	4,623	4,368	4,662	4,479	4,839	4,840	4,501
Washington	1,558	1,460	1,674	1,679	1,680	1,680	1,532	1,650	1,525	1,670	1,618	1,496
Total	19,854	19,538	20,784	20,290	20,724	20,510	19,326	20,441	19,297	20,690	20,485	18,726
FFS	462	460	465	443	456	458	483	481	496	516	474	444

HOSPITAL DATA



TABLE 7: UNIQUE¹ HOSPITAL ADMISSIONS PER 1,000 MEMBERS² ENROLLED

MHO Contractors	2006			
	1 st Qtr	2 nd Qtr	3 rd Qtr	4 th Qtr
ABHA	1.02	1.20	1.69	1.46
Clackamas	1.57	1.40	1.81	1.57
FamilyCare	3.53	3.29	4.16	2.58
GOBHI	0.73	0.66	0.58	0.69
JBH	2.45	2.58	2.42	1.78
LaneCare	3.01	2.94	2.64	2.32
MVBCN	0.88	0.99	0.93	0.67
Verity	2.48	2.93	2.76	2.39
Washington	2.40	2.75	1.48	1.77
Totals	1.92	2.07	1.94	1.63

(n=Total Admissions/d=Unique Enrolled per 1,000 members)

TABLE 8: UNIQUE HOSPITAL ADMISSIONS: AGE GROUPS PER 1,000 MEMBERS ENROLLED

MHO Contractors	Age Group	2006			
		1 st Qtr	2 nd Qtr	3 rd Qtr	4 th Qtr
ABHA	0-17	0.1	0.5	0.2	0.3
	18-64	2.5	2.5	4.5	3.7
	65+	0.6	0.6	0.0	0.0
Clackamas	0-17	0.8	0.2	0.3	0.7
	18-64	3.0	3.6	5.0	3.5
	65+	0.9	0.9	0.0	0.0
FamilyCare	0-17	0.5	1.7	0.9	0.6
	18-64	7.9	5.8	9.2	5.7
	65+	0.0	0.0	0.0	0.0
GOBHI	0-17	0.2	0.3	0.1	0.2
	18-64	1.7	1.4	1.4	1.6
	65+	0.0	0.0	0.4	0.4
JBH	0-17	1.0	1.0	0.8	0.6
	18-64	4.7	5.0	5.0	3.6
	65+	0.2	0.2	0.9	0.4

(n=Total Admissions/d=Unique Enrolled per 1,000 members)

¹ Unique: All duplicate records are removed.² Per 1,000 members is the unique number enrolled divided by 1,000

TABLE 8: UNIQUE¹ HOSPITAL ADMISSIONS BY AGE GROUPS PER 1,000 MEMBERS² ENROLLED (*continued*)

MHO Contractors	Age Group	2006			
		1 st Qtr	2 nd Qtr	3 rd Qtr	4 th Qtr
LaneCare	0-17	0.3	0.4	0.4	0.1
	18-64	6.0	5.8	5.9	5.3
	65+	5.0	4.6	0.0	1.9
MVBCN	0-17	0.2	0.3	0.2	0.1
	18-64	2.2	2.2	2.4	1.8
	65+	0.7	1.8	0.7	0.4
Verity	0-17	0.6	1.0	0.6	0.8
	18-64	5.4	6.1	6.1	5.3
	65+	0.9	0.9	1.7	0.6
Washington	0-17	0.7	0.8	0.5	0.8
	18-64	6.8	7.7	3.9	4.5
	65+	0.0	0.4	0.7	0.4
Total	0-17	0.5	0.6	0.4	0.5
	18-64	4.3	4.5	4.6	3.8
	65+	0.9	1.1	0.8	0.5

(n=Total Admissions/d=Unique Enrolled per 1,000 members)

TABLE 9: AVERAGE HOSPITAL DAYS OF SERVICE

MHO Contractors	2006			
	1 st Qtr	2 nd Qtr	3 rd Qtr	4 th Qtr
ABHA	4.9	11.9	4.9	6.9
Clackamas	13.6	11.7	11.0	10.3
FamilyCare	8.1	8.2	5.6	5.6
GOBHI	7.9	8.5	6.4	10.3
JBH	5.6	5.4	6.3	4.4
LaneCare	8.4	8.6	8.8	9.7
MVBCN	10.3	10.1	12.2	12.1
Verity	7.2	9.3	8.4	7.9
Washington	9.4	7.8	9.8	9.4
Total	7.9	8.4	8.2	8.1

n=Sum Days of Service/d=Total Discharges

¹ Unique: All duplicated records are removed

² Per 1,000 members is the unique number enrolled divided by 1,000

TABLE 10: AVERAGE HOSPITAL DAYS BY MHO/AGE GROUP

MHO Contractors	Age Groups	2006			
		1 st Qtr	2 nd Qtr	3 rd Qtr	4 th Qtr
ABHA	0-17	12.00	14.80	5.75	5.40
	18-64	4.79	11.64	4.85	7.08
	65+	0.00	4.00	n/a	n/a
Clackamas	0-17	5.18	7.00	14.00	6.78
	18-64	17.61	12.83	10.65	11.41
	65+	3.50	5.50	n/a	n/a
FamilyCare	0-17	10.00	7.10	6.50	5.40
	18-64	7.93	8.59	5.44	5.68
	65+	n/a	n/a	n/a	n/a
GOBHI	0-17	8.50	9.40	4.00	8.00
	18-64	7.74	8.19	6.80	10.44
	65+	n/a	n/a	3.00	17.00
JBH	0-17	7.34	6.37	7.52	5.92
	18-64	5.07	5.18	6.00	4.07
	65+	10.00	2.00	9.75	2.50
LaneCare	0-17	8.43	9.38	7.50	6.00
	18-64	7.62	7.94	8.97	9.83
	65+	14.08	13.30	n/a	10.00
MVBCN	0-17	8.29	8.27	12.22	4.40
	18-64	10.50	10.29	11.84	12.81
	65+	11.00	12.00	16.75	19.00
Verity	0-17	6.75	7.66	5.65	5.67
	18-64	7.19	9.33	8.58	8.20
	65+	11.00	17.86	13.11	9.67
Washington	0-17	7.50	8.56	7.18	7.59
	18-64	9.84	7.61	10.49	10.11
	65+	n/a	n/a	9.33	10.00
Totals	0-17	7.28	7.87	7.58	6.17
	18-64	7.84	8.31	8.18	8.39
	65+	11.52	12.82	12.14	9.93

n=Sum Days of Service/d=Total Discharges

n/a=no discharges within that quarter/age group

TABLE 11: PERCENT OF HOSPITAL RE-ADMISSION WITHIN 30 DAYS

MHO Contractors	2006			
	1st Qtr	2nd Qtr	3rd Qtr	4th Qtr
ABHA	3.8%	9.7%	11.1%	9.8%
Clackamas	7.3%	17.1%	11.3%	10.5%
FamilyCare	21.9%	15.4%	21.3%	6.7%
GOBHI	4.3%	14.3%	5.9%	4.3%
JBH	7.5%	12.4%	15.0%	9.3%
LaneCare	16.2%	10.4%	15.5%	6.9%
MVBCN	8.1%	5.7%	8.8%	13.0%
Verity	8.3%	11.6%	12.1%	12.3%
Washington	19.8%	7.1%	16.4%	23.8%
Total	10.8%	11.0%	13.5%	11.4%

n=Unique readmissions within 30 days/d=unique discharges

TABLE 12: TOTAL HOSPITAL RE-ADMISSION WITHIN 180 DAYS

MHO Contractors	2006			
	1st Qtr	2nd Qtr	3rd Qtr	4th Qtr
ABHA	3.8%	22.6%	20.0%	22.0%
Clackamas	12.2%	28.6%	17.0%	18.4%
FamilyCare	28.1%	25.6%	34.0%	26.7%
GOBHI	8.7%	14.3%	11.8%	21.7%
JBH	11.8%	27.2%	37.5%	25.4%
LaneCare	20.7%	21.7%	37.1%	23.0%
MVBCN	9.7%	11.4%	14.7%	29.6%
Verity	11.9%	21.3%	30.1%	30.7%
Washington	19.8%	20.2%	34.5%	33.3%
Total	14.2%	22.0%	29.8%	27.0%

n=Unique readmissions within 180 days/d=unique discharges

FIGURE 5: TOTAL SEEN BY OUTPATIENT WITHIN 7 DAYS OF HOSPITAL DISCHARGE
 (All re-admissions are included in the hospital discharge numbers. All Mental Health Diagnosis is included in the outpatient numbers.)
 (n=number seen within 7 days/d= hospital discharges.)

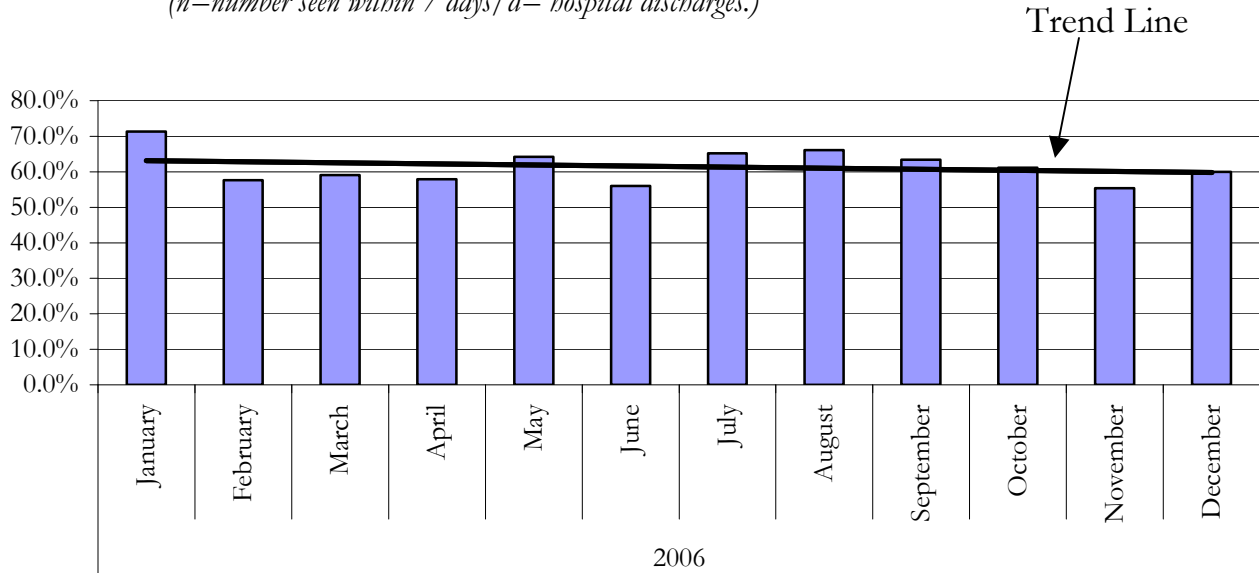


TABLE 13: SEEN BY OUTPATIENT WITHIN 7 DAYS OF HOSPITAL DISCHARGE
 (All re-admissions are included in the hospital discharge numbers. All mental health diagnoses are included in the outpatient numbers).

MHO Contractors	2006			
	1 st Qtr	2 nd Qtr	3 rd Qtr	4 th Qtr
ABHA	73.1%	77.4%	86.7%	58.5%
Clackamas	75.6%	54.3%	60.4%	52.6%
FamilyCare	18.8%	15.4%	25.5%	6.7%
GOBHI	73.9%	61.9%	70.6%	0.0%
JBH	71.4%	63.9%	65.0%	56.8%
LaneCare	52.3%	50.0%	68.0%	54.0%
MVBCN	56.5%	55.7%	67.6%	64.8%
Verity	58.0%	60.2%	62.6%	61.5%
Washington	69.1%	64.3%	61.8%	61.9%
Total	61.5%	57.8%	63.4%	56.2%

(n=Seen Within 7 days/d=Hospital Discharges)

GLOSSARIES



MHO UTILIZATION REPORT GLOSSARY

ADDICTIONS AND MENTAL HEALTH DIVISION (AMH):

The division office of DHS responsible for the administration of mental health services for the State of Oregon.

DIAGNOSIS CATEGORY:

Diagnosis categories are defined by the grouping of diagnoses in the most recent version of the American Psychiatric Association's Diagnostic and Statistical Manual (DSM).

ELIGIBLE:

An individual eligible for services under the OHP, but may not be enrolled into an MHO. Includes enrolled and fee-for-service.

ENCOUNTER:

An outpatient contact or Acute Inpatient Hospital Psychiatric Care admission for Covered Services provided to an OHP Member.

ENROLLED (ENROLLEE):

Eligible for the Oregon Health Plan (OHP) and enrolled in an MHO.

FEE-FOR-SERVICE (FFS):

Individuals who are eligible for the OHP, but are not enrolled with an MHO. This is also known as fee-for-service (FFS) or an "open card".

MENTAL HEALTH ORGANIZATION (MHO):

A Prepaid Health Plan under contract with DHS to provide Covered Services under the OHP Medicaid Demonstration Project and State Children's Health Insurance Program (SCHIP). MHOs can be FCHPs, CMHPs, or private MHOs or combinations thereof.

OREGON HEALTH PLAN (OHP):

Oregon's health care reform effort consisting of a Medicaid Demonstration Project, State Children's Health Insurance Program, an individual insurance program for persons excluded from health insurance coverage due to pre-existing health conditions, and a group insurance program for small businesses. One objective of this reform effort includes universal coverage for Oregonians. In the context of this report, OHP refers to all individuals on FFSMHO Utilization Report Glossary

MHO UTILIZATION REPORT GLOSSARY *(Continued)*

PERCENT ENROLLEES SERVED:

This is a general measure of access, but more related to utilization of services. It is a percentage calculated by summing the unique enrollees seen during a given time period and dividing that number by the total enrollees for that time period. For example, if there is 10,000 enrollees statewide in a given month and during that same month 500 of those enrollees receive services, the percent of enrollees served is 5%.

PERCENTAGE RATE:

A percent of the total enrollees that received services within a given time period.

SERVICE CATEGORY:

Service category is a descriptive grouping of service codes (BA, ECC, and CPT) that are similar procedurally.

UNIQUE SERVED:

Unduplicated number of individuals receiving mental health services.

UNIQUE ENCOUNTERS:

Unduplicated services received by an individual(s) within a specific time period. One individual may have had several services provided – each service would be part of the calculations.

DIAGNOSTIC CATEGORIES GLOSSARY WITH SPECIFIC DSMIV CODES

The following codes include, but are not limited to procedure codes used by service providers within the reporting period for this report.

ADHD:

314; 314.0; 314.00; 314.01; 314.1; 314.9; 314.90

ADJUSTMENT DISORDERS:

309.00; 309.1; 309.2; 309.21; 309.22; 309.23; 309.24; 309.28; 309.29; 309.3; 309.4;
309.40; 309.80; 309.82; 309.83; 309.89; 309.9

ALCOHOL/DRUG:

291.3; 291.4; 291.5; 291.81; 291.89; 291.9; 292.0; 292.11; 292.12; 292.2; 292.84;
292.9; 303.00; 303.01; 303.02; 303.90; 303.91; 303.92; 303.93; 304.00; 304.01;
304.03; 304.10; 304.20; 304.23; 304.3; 304.30; 304.31; 304.33; 304.40; 304.41;
304.42; 304.43; 304.70; 304.71; 304.80; 304.81; 304.83; 304.90; 305.00; 305.01;
305.02; 305.03; 305.1; 305.20; 305.21; 305.22; 305.23; 305.30; 305.40; 305.50;
305.60; 305.61; 305.62; 305.70; 305.71; 305.72; 305.73; 305.90; 305.91

ANXIETY DISORDER OTHER THAN PTSD:

293.84; 300.0; 300.00; 300.01; 300.02; 300.09; 300.10; 300.20; 300.21; 300.22;
300.23; 300.29; 300.3; 308.3; 308.9

BEHAVIOR DISORDERS:

312.00; 312.01; 312.02; 312.30; 312.31; 312.32; 312.34; 312.39; 312.4; 312.8;
312.80; 312.81; 312.82; 312.89; 312.9; 313.69; 313.81

BORDERLINE PERSONALITY DISORDERS:

DELIRIUM, DEMENTIA, COGNITIVE DISORDERS:

290.0; 290.10; 290.11; 290.12; 290.13; 290.20; 290.21; 290.3; 290.40; 290.41;
290.42; 290.43; 291.0; 291.2; 292.82; 292.83; 292.89; 293.0; 293.84; 294.0; 294.1;
294.10; 294.11; 294.8; 294.9; 294.90; 310.0; 310.1; 310.10

DIAGNOSIS DEFERRED:

799.9

DIAGNOSTIC CATEGORIES GLOSSARY
WITH SPECIFIC DSM-IV CODES
(*CONTINUED*)

DISORDERS OF INFANCY, CHILDHOOD, ADOLESCENCE NES:

299.10; 307.0; 307.20; 307.22; 307.23; 307.3; 307.6; 307.7; 307.9; 313.0; 313.23;
313.82; 313.89; 313.9; 315.00; 315.31; 315.32; 315.39; 315.4; 315.9; 317.0; 318.0;
318.1; 318.2; 319.0; 787.6

DISSOCIATIVE DISORDERS:

300.12; 300.13; 300.14; 300.15; 300.6

MAJOR DEPRESSIVE DISORDERS:

296.2; 296.20; 296.21; 296.22; 296.23; 296.24; 296.25; 296.26; 296.3; 296.30;
296.31; 296.32; 296.33; 296.34; 296.35; 296.36

MANIA/BIPOLAR DISORDERS:

296; 296.0; 296.00; 296.01; 296.02; 296.03; 296.04; 296.05; 296.06; 296.09; 296.10;
296.11; 296.12; 296.13; 296.15; 296.4; 296.40; 296.41; 296.42; 296.43; 296.44;
296.45; 296.46; 296.50; 296.51; 296.52; 296.53; 296.54; 296.55; 296.56; 296.6;
296.60; 296.61; 296.62; 296.63; 296.64; 296.65; 296.66; 296.7; 296.70; 296.8;
296.80; 296.81; 296.82; 296.89

MOOD DISORDERS WITHOUT BEHAVIOR, MANIA AND BIPOLAR:

293.83; 296.9; 296.90; 296.99; 300.4; 300.40; 301.13; 311; 311.0; 311.00

OTHER MENTAL HEALTH (MH) DISORDERS:

293.89; 293.9; 296.74; 300.11; 300.16; 300.19; 300.7; 300.81; 300.82; 300.9; 302.2;
302.4; 302.70; 302.73; 302.9; 305.93; 306.3; 307.1; 307.42; 307.44; 307.45; 307.46;
307.47; 307.50; 307.51; 307.52; 307.53; 307.59; 307.80; 307.89; 307.9; 308.0;
308.1; 308.2; 309.29; 316; 780.52; 780.59; 968.9; 995.2; 995.50; 995.52; 995.53;
995.54; 995.81; V61.0; V61.10; V61.20; V61.21; V61.8; V61.9; V62.81; V62.82;
V62.89; V62.9; V65.40; V71.01; V71.02; V71.09

PERSONALITY DISORDERS:

301.0; 301.10; 301.12; 301.20; 301.22; 301.3; 301.4; 301.50; 301.6; 301.7; 301.81;
301.82; 301.84; 301.89; 301.9; 301.83

**DIAGNOSTIC CATEGORIES GLOSSARY
WITH SPECIFIC DSMIV CODES
(Continued)**

PERVASIVE DEVELOPMENTAL DISORDERS:

299.0; 299.00; 299.80

POST-TRAUMATIC STRESS DISORDER (PTSD):

309.81

SCHIZOPHRENIA, OTHER PSYCHOTIC DISORDERS:

293.81; 293.82; 295.0; 295.00; 295.02; 295.03; 295.10; 295.11; 295.12; 295.13;
295.14; 295.15; 295.20; 295.22; 295.23; 295.24; 295.3; 295.30; 295.31; 295.32;
295.33; 295.34; 295.35; 295.40; 295.42; 295.43; 295.45; 295.50; 295.60; 295.61;
295.62; 295.64; 295.65; 295.7; 295.70; 295.71; 295.73; 295.74; 295.75; 295.80;
295.82; 295.9; 294.90; 295.91; 295.92; 295.93; 295.94; 295.95; 297.1; 297.2; 297.3;
297.30; 297.9; 298.0; 298.8; 298.9; 298.90; 299.01

SERVICE CATEGORIES GLOSSARY WITH SPECIFIC PROCEDURES CODES

ALTERNATIVES TO INPATIENT HOSPITALIZATION:

H0035; H2013

ASSERTIVE COMMUNITY TREATMENT:

H0039

ASSESSMENT & EVALUATION:

90801; 90802; 96100; 99090; 99214; 99222; 99223; 99231; 99232; 99233; 99238;
99239; BA008; BA010; BA011; H0002; H0031

CASE MANAGEMENT:

99371; BA046; BA047; BA147; T1016

CHILD & FAMILY TEAM MEETINGS:

H0032

CONSULTATION:

90882; 90887; 99255; BA017

CRISIS INTERVENTION:

S9484

FAMILY THERAPY:

90846; 90849; BA013; BA016

GROUP THERAPY:

90853; 90857; BA015; BA115

INDIVIDUAL THERAPY:

90804; 90805; 90806; 90807; 90808; 90809; 90810; 90811; 90812; 90813; 90814;
90815; BA011; BA111; H0004

INTERPRETIVE SERVICES:

T1013

ISA - AE:

H0018

**SERVICE CATEGORIES GLOSSARY WITH
SPECIFIC PROCEDURES CODES***(Continued)***ISA - DAY TREATMENT:**

ECC13; H0037; H2012

ISA - MST:

H2033

ISA - RESIDENTIAL:

ECC11; H0019

LEVEL OF NEED DETERMINATION:

T1023

MEDICATION MANAGEMENT:

90862; BA019; BA026; BA126; H0033; H0034; H2010

OUTPATIENT THERAPY:

90847; 90849; 90899; ECC50; H0045; H2011; H2023; S9484; T1005

RESPIRE CARE:

ECC20; H0045; S5151; S9125

SKILLS TRAINING:

G0176; G0177; H2014; H2027; H2032

SUB-ACUTE CARE:

H2013; H2023

SUPPORTIVE DAY PROGRAM:

H0036

TREATMENT FOSTER CARE:

S5145; S5146

WRAPAROUND SERVICES:

H0038; H2021; H2022; H2027