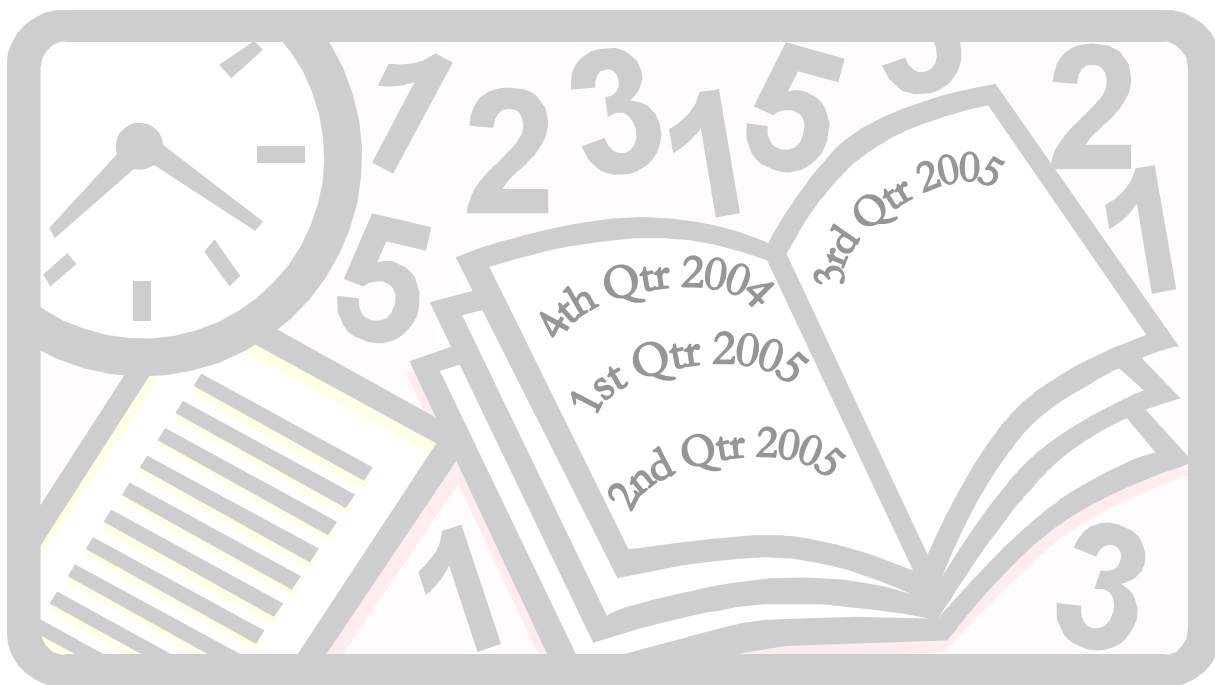


Department of Human Services
Office of Mental Health and Addiction Services

MHO Utilization Quarterly Report

October 2004 through September 2005



Report Produced by
Program Analysis and Evaluation Team
JANUARY 2006

EXECUTIVE SUMMARY
REPORT ON OREGON HEALTH PLAN (OHP)
UTILIZATION AND ENROLLMENT FOR
MENTAL HEALTH SERVICES:
OCTOBER 2004 THROUGH SEPTEMBER 2005

The following is a summary of the Mental Health Organization (MHO) Utilization Quarterly Report for the period of October 2004 through September 2005. This report contains enrollment, unique served and hospitalization data. The data for this report were pulled December 8, 2005. All information came from the Office of Medical Assistance Programs' (OMAP) Decision Support/Surveillance and Utilization Review System (DSSURS). There is a 180-day lag in encounter data submissions; this is reflected in the Hospital Data. **Any conclusions drawn from the information should consider lag in data submission into account.**

NOTE:

Hospital data were re-pulled on March 29, 2006 to correct the admission and discharge dates.

TABLE OF CONTENTS

The format and contents are constructed as follows:

- Figures are used to illustrate trends in statewide data.
- Tables are used to summarize quarterly data at the MHO level. Some tables include FFS and All Eligibles.



Executive Summary	i
Enrolled Data:	
Figure 1: Unique Enrolled by MHO	1
Table 1: Unique Enrolled by MHO	1
Table 2: Unique Enrolled by Gender.....	2
Figure 2: Total Enrolled Children (0-17) And Adults (18+)	3
Table 3: Enrolled Children (0-17) and Adults (18+) Quarter.....	3
Figure 3: Total Enrolled by Age Groups.....	4
Table 4: Unique Enrolled by Age Groups and Percentage by MHO Total	4
Figure 4: Percentage of Total Unique Enrolled by Ethnicity	6
Table 5: Unique Enrolled by Ethnicity.....	6
Served Data:	
Figure 4: Unique Served by MHO.....	10
Table 6: Unique Served by MHO and Percentage Rate.....	10
Table 7: Unique Served by Gender and Percentage Rate.....	11
Figure 5: Total All Quarters Unique Served Children and Adults	12
Table 8: Unique Served by MHO: Children (0-17) and Adults (18+).....	12
Table 9: Unique Served by MHO/Age Group and Percentage Rate	13
Figure 6: Total Unique Served by Ethnicity.....	14
Table 10: Unique Served by MHO/Ethnicity and Percentage Rate	14
Figure 7: Total All Quarters: Unique Encounters by Service Categories.....	17

Table of Contents

(Continued)

Table 11: Unique Encounters by MHO/Service Categories	
ABHA & Clackamas.....	18
FamilyCare & GOBHI.....	19
JBH & LaneCare	20
MVBCN & Verity.....	21
Washington & Total.....	22
Fee-For-Service	23
Figure 8: Total All Quarters: Unique Encounters by Diagnostic Groups	23
Table 12: Unique Encounters by MHO/Diagnostic Groups	
ABHA & Clackamas.....	24
FamilyCare & GOBHI.....	25
JBH & LaneCare	26
MVBCN & Verity.....	27
Washington & Total.....	28
Fee-For-Service	29

Hospital Data:

Table 13: Unique Hospital Admissions per 1,000 Members Enrolled.....	30
Table 14: Unique Hospital Admissions by Age Groups per 1,000 Members	30
Table 15: Average Hospital Days of Service.....	31
Table 16: Average Hospital Days by MHO/Age Group.....	32
Table 17: Percent of Hospital Re-Admission within 30 days.....	33
Table 18: Total Hospital Re-Admission within 180 days	33
Figure 9: Total Seen by Outpatient within 7 Days of Hospital Discharge.....	34
Table 19: Seen by Outpatient within 7 Days of Hospital Discharge	34

Glossaries:

MHO Utilization Report Glossary	29
Diagnostic Categories Glossary with Specific DSMIV Codes.....	30
Service Categories Glossary with Specific Procedure Codes	33
Enrollment Numbers per Month	35
Unique Members Served per Month.....	36

Enrollment Data

- ❖ Enrolled: Eligible for OHP and enrolled in an MHO
- ❖ Eligibles: Both Enrolled and FFS
- ❖ Fee-For-Service (FFS): Eligible for OHP and NOT enrolled with an MHO (Open Card)

FIGURE 1: UNIQUE ENROLLED BY MHO

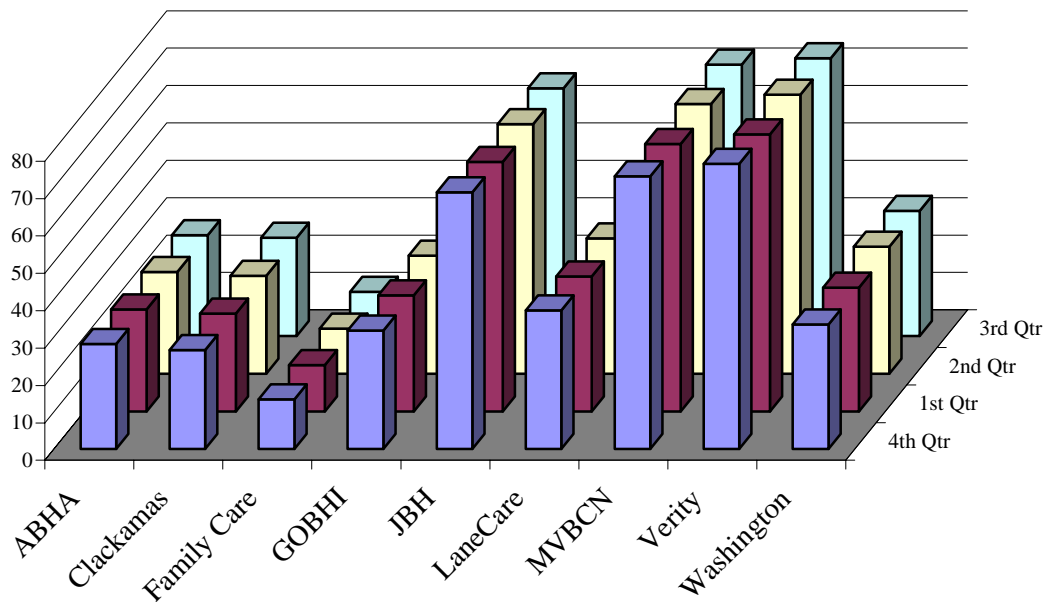


TABLE 1: UNIQUE ENROLLED BY MHO

MHO Contractors	2004		2005					
	4 th Qtr	% Enrolled	1 st Qtr	% Enrolled	2 nd Qtr	% Enrolled	3 rd Qtr	% Enrolled
ABHA	28,076	7.2%	27,244	7.2%	27,265	7.2%	27,041	7.1%
Clackamas	26,476	6.8%	26,143	6.9%	26,211	6.9%	26,360	6.9%
FamilyCare	13,302	3.4%	12,399	3.3%	12,075	3.2%	11,821	3.1%
GOBHI	31,681	8.2%	31,021	8.2%	31,597	8.3%	31,630	8.3%
JBH	68,676	17.7%	66,770	17.6%	66,731	17.5%	66,327	17.5%
LaneCare	37,039	9.6%	36,093	9.5%	36,201	9.5%	35,976	9.5%
MVBCN	72,956	18.8%	71,499	18.9%	72,161	18.9%	72,639	19.1%
Verity	76,256	19.7%	74,104	19.6%	74,610	19.6%	74,367	19.6%
Washington	33,280	8.6%	33,073	8.7%	33,978	8.9%	33,538	8.8%
Total Enrolled	387,742	100%	378,346	100%	380,829	100%	379,699	100%

n=Unique Enrolled/d=Total Enrolled

	4 th Qtr	% Eligibles	1 st Qtr	% Eligibles	2 nd Qtr	% Eligibles	3 rd Qtr	% Eligibles
Total Enrolled	387,742	90.4%	378,346	88.8%	380,829	89.8%	379,699	89.6%
All Eligibles ²	429,089	100%	426,046	100%	424,083	100%	423,675	100%
Fee-For-Service (FFS) ³	41,347	9.6%	47,700	11.2%	43,254	10.2%	43,976	10.4%

n=Total Enrolled/d=All Eligibles

n=FFS/d=All Eligibles

² Eligibles: Both Enrolled and FFS

³ Fee-For-Service (FFS): Eligible for OHP and NOT enrolled with an MHO (Open Card)

TABLE 2: UNIQUE ENROLLED¹ BY GENDER

MHO Contractors	Gender	2004	2005		
		4 th Qtr	1 st Qtr	2 nd Qtr	3 rd Qtr
ABHA	Female	15,954	15,551	15,637	15,565
	Male	12,122	11,693	11,628	11,476
Clackamas	Female	15,082	14,910	14,907	14,990
	Male	11,394	11,233	11,304	11,370
FamilyCare	Female	7,377	6,955	6,855	6,763
	Male	5,925	5,444	5,220	5,058
GOBHI	Female	18,061	17,700	17,971	17,989
	Male	13,620	13,321	13,626	13,641
JBH	Female	39,157	38,289	38,210	38,072
	Male	29,519	28,481	28,521	28,255
LaneCare	Female	21,289	20,828	20,831	20,705
	Male	15,750	15,265	15,370	15,271
MVBCN	Female	41,020	40,426	40,884	41,176
	Male	31,936	31,073	31,277	31,463
Verity	Female	42,462	41,342	41,649	41,576
	Male	33,794	32,762	32,961	32,791
Washington	Female	18,723	18,681	19,291	19,043
	Male	14,557	14,392	14,687	14,495
Total by Quarter	Female	219,125	214,682	216,235	215,879
	Male	168,617	163,664	164,594	163,820
All Eligibles ²	Female	245,214	242,988	243,536	242,558
	Male	183,875	180,687	180,584	179,317
Fee-For-Service ³ (FFS)	Female	26,089	28,306	27,301	26,679
	Male	15,258	17,023	15,990	15,497

¹ Enrolled: Eligible for OHP and enrolled in an MHO

² Eligibles: Both Enrolled and FFS

³ Fee-For-Service (FFS): Eligible for OHP and NOT enrolled with an MHO (Open Card)

FIGURE 2: TOTAL ENROLLED¹ CHILDREN (0-17) AND ADULTS (18+)

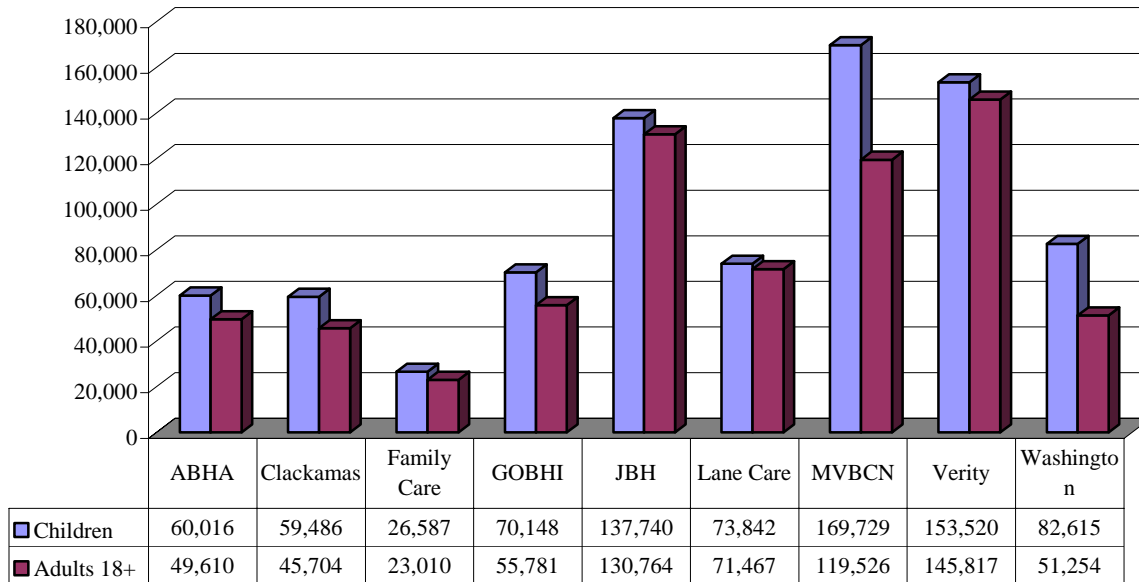


TABLE 3: ENROLLED CHILDREN (0-17) AND ADULTS (18+) QUARTER

MHO Contractors	Age Groups	2004		2005					
		4 th Qtr	% By MHO Qtr Total ²	1 st Qtr	% By MHO Qtr Total	2 nd Qtr	% by MHO Qtr Total	3 rd Qtr	% by MHO Qtr Total
ABHA	Adults	14,686	52.3%	14,820	54.4%	15,193	55.7%	15,317	56.6%
	Child	13,390	47.7%	12,424	45.6%	12,072	44.3%	11,724	43.4%
Clackamas	Adults	14,494	54.7%	14,746	56.4%	15,050	57.4%	15,196	57.6%
	Child	11,982	45.3%	11,397	43.6%	11,161	42.6%	11,164	42.4%
FamilyCare	Adults	6,612	49.7%	6,639	53.5%	6,698	55.5%	6,638	56.2%
	Child	6,690	50.3%	5,760	46.5%	5,377	44.5%	5,183	43.8%
GOBHI	Adults	16,915	53.4%	17,159	55.3%	17,892	56.6%	18,182	57.5%
	Child	14,766	46.6%	13,862	44.7%	13,705	43.4%	13,448	42.5%
JBH	Adults	33,864	49.3%	34,063	51.0%	34,727	52.0%	35,086	52.9%
	Child	34,812	50.7%	32,707	49.0%	32,004	48.0%	31,241	47.1%
LaneCare	Adults	18,109	48.9%	18,155	50.3%	18,732	51.7%	18,846	52.4%
	Child	18,930	51.1%	17,938	49.7%	17,469	48.3%	17,130	47.6%
MVBCN	Adults	41,322	56.6%	41,613	58.2%	42,943	59.5%	43,851	60.4%
	Child	31,634	43.4%	29,886	41.8%	29,218	40.5%	28,788	39.6%
Verity	Adults	37,467	49.1%	37,675	50.8%	38,972	52.2%	39,406	53.0%
	Child	38,789	50.9%	36,429	49.2%	35,638	47.8%	34,961	47.0%
Washington	Adults	19,680	59.1%	20,269	61.3%	21,294	62.7%	21,372	63.7%
	Child	13,600	40.9%	12,804	38.7%	12,684	37.3%	12,166	36.3%

¹ Enrolled: Eligible for OHP and enrolled in an MHO

² Percentage formula: n=unique enrolled by child or adult/d=MHO total enrolled

FIGURE 3: TOTAL ENROLLED BY AGE GROUPS

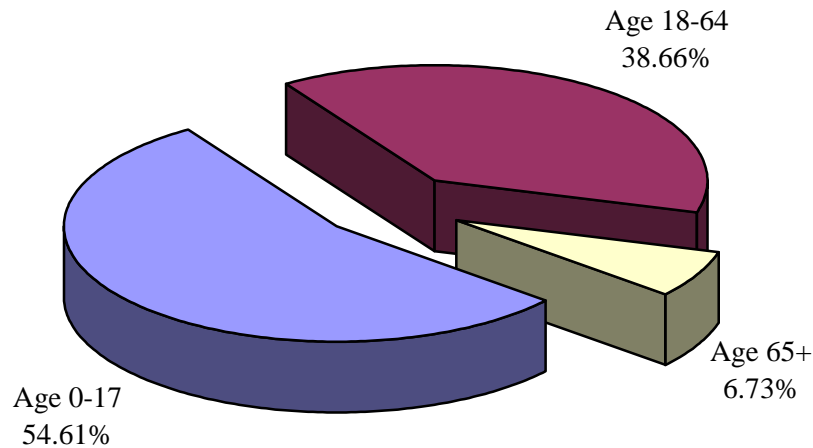


TABLE 4: UNIQUE Enrolled¹ by Age Groups and Percentage by MHO Total

MHO Contractors	Age Groups	2004		2005					
		4 th Qtr	% by MHO Qtr Total ²	1 st Qtr	% by MHO Qtr Total	2 nd Qtr	% by MHO Qtr Total	3 rd Qtr	% by MHO Qtr Total
ABHA	0-17	14,686	52.3%	14,820	54.4%	15,193	55.7%	15,317	56.6%
	18-64	11,639	41.5%	10,701	39.3%	10,372	38.0%	10,021	37.1%
	65 +	1,751	6.2%	1,723	6.3%	1,700	6.2%	1,703	6.3%
Clackamas	0-17	14,494	54.7%	14,746	56.4%	15,050	57.4%	15,196	57.6%
	18-64	9,996	37.8%	9,430	36.1%	9,181	35.0%	9,031	34.3%
	65 +	1,986	7.5%	1,967	7.5%	1,980	7.6%	2,133	8.1%
FamilyCare	0-17	6,612	49.7%	6,639	53.5%	6,698	55.5%	6,638	56.2%
	18-64	6,334	47.6%	5,413	43.7%	5,038	41.7%	4,841	41.0%
	65 +	356	2.7%	347	2.8%	339	2.8%	342	2.9%
GOBHI	0-17	16,915	53.4%	17,159	55.3%	17,892	56.6%	18,182	57.5%
	18-64	12,479	39.4%	11,615	37.4%	11,462	36.3%	11,210	35.4%
	65 +	2,287	7.2%	2,247	7.2%	2,243	7.1%	2,238	7.1%
JBH	0-17	33,864	49.3%	34,063	51.0%	34,727	52.0%	35,086	52.9%
	18-64	30,219	44.0%	28,154	42.2%	27,541	41.3%	26,817	40.4%
	65 +	4,593	6.7%	4,553	6.8%	4,463	6.7%	4,424	6.7%

¹ Enrolled: Eligible for OHP and enrolled in an MHO

² Percentage formula: n=unique enrolled by age group/d=MHO total enrolled

TABLE 4: UNIQUE Enrolled¹ by Age Groups (continued)

MHO Contractors	Age Groups	2004		2005					
		4 th Qtr	% by MHO Qtr Total ²	1 st Qtr	% by MHO Qtr Total	2 nd Qtr	% by MHO Qtr Total	3 rd Qtr	% by MHO Qtr Total
LaneCare	0-17	18,109	48.9%	18,155	50.3%	18,732	51.7%	18,846	52.4%
	18-64	16,993	45.9%	16,018	44.4%	15,587	43.1%	15,232	42.3%
	65 +	1,937	5.2%	1,920	5.3%	1,882	5.2%	1,898	5.3%
MVBCN	0-17	41,322	56.6%	41,613	58.2%	42,943	59.5%	43,851	60.4%
	18-64	27,288	37.4%	25,591	35.8%	24,959	34.6%	24,525	33.8%
	65 +	4,346	6.0%	4,295	6.0%	4,259	5.9%	4,263	5.9%
Verity	0-17	37,467	49.1%	37,675	50.8%	38,972	52.2%	39,406	53.0%
	18-64	32,448	42.6%	30,161	40.7%	29,430	39.4%	28,813	38.7%
	65 +	6,341	8.3%	6,268	8.5%	6,208	8.3%	6,148	8.3%
Washington	0-17	19,680	59.1%	20,269	61.3%	21,294	62.7%	21,372	63.7%
	18-64	11,262	33.8%	10,450	31.6%	10,286	30.3%	9,668	28.8%
	65 +	2,338	7.0%	2,354	7.1%	2,398	7.1%	2,498	7.4%
Total by Quarter	0-17	203,149	52.4%	205,139	54.2%	211,501	55.5%	213,894	56.3%
	18-64	158,658	40.9%	147,533	39.0%	143,856	37.8%	140,158	36.9%
	65 +	25,935	6.7%	25,674	6.8%	25,472	6.7%	25,647	6.8%

¹ Enrolled: Eligible for OHP and enrolled in an MHO² Percentage formula: n=unique enrolled by age group/d=MHO total enrolled

FIGURE 4: PERCENTAGE OF TOTAL UNIQUE ENROLLED¹ BY ETHNICITY

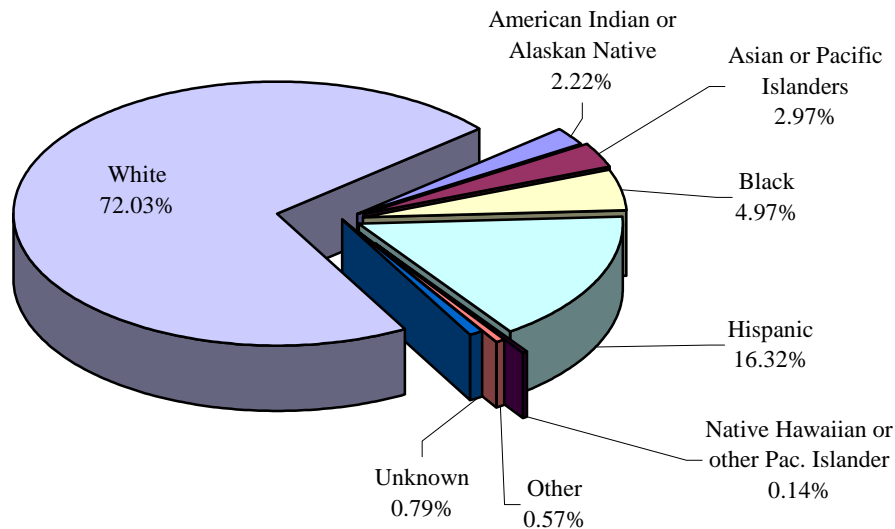


TABLE 5: UNIQUE ENROLLED BY ETHNICITY

MHO Contractors	Ethnicity	2004		2005					
		4 th Qtr	% by MHO Qtr Total ²	1 st Qtr	% by MHO Qtr Total	2 nd Qtr	% by MHO Qtr Total	3 rd Qtr	% by MHO Qtr Total
ABHA	Am. Indian / Alaskan Ntv	1,330	4.7%	1,198	4.4%	1,188	4.4%	1,163	4.3%
	Asian or Pac. Islanders	234	0.8%	228	0.8%	246	0.9%	243	0.9%
	Black	264	0.9%	248	0.9%	259	0.9%	291	1.1%
	Hispanic	2,781	9.9%	2,848	10.5%	3,010	11.0%	3,067	11.3%
	Ntv Hawaiian/Pac. Islander	20	0.1%	23	0.1%	30	0.1%	39	0.1%
	Other	138	0.5%	133	0.5%	128	0.5%	111	0.4%
	Unknown	172	0.6%	179	0.7%	176	0.6%	161	0.6%
	White	23,137	82.4%	22,387	82.2%	22,228	81.5%	21,966	81.2%
Clackamas	Am. Indian / Alaskan Ntv	392	1.5%	390	1.5%	408	1.6%	414	1.6%
	Asian or Pac. Islanders	475	1.8%	491	1.9%	480	1.8%	483	1.8%
	Black	483	1.8%	501	1.9%	501	1.9%	526	2.0%
	Hispanic	4,613	17.4%	4,675	17.9%	4,847	18.5%	4,971	18.9%
	Ntv Hawaiian/Pac. Islander	23	0.1%	32	0.1%	32	0.1%	45	0.2%
	Other	147	0.6%	141	0.5%	133	0.5%	123	0.5%
	Unknown	170	0.6%	175	0.7%	189	0.7%	184	0.7%
	White	20,173	76.2%	19,738	75.5%	19,621	74.9%	19,614	74.4%

¹ Enrolled: Eligible for OHP and enrolled in an MHO

² Percentage formula: n=unique enrolled by ethnicity/d=MHO total enrolled

TABLE 5: UNIQUE ENROLLED¹ BY ETHNICITY (Continued)

MHO	Ethnicity	2004		2005					
		4 th Qtr	% of MHO Qtr Total ²	1 st Qtr	% of MHO Qtr Total	2 nd Qtr	% of MHO Qtr Total	3 rd Qtr	% of MHO Qtr Totals
FamilyCare	Am. Indian/Alaskan Ntv	192	1.4%	183	1.5%	194	1.6%	188	1.6%
	Asian or Pac. Islanders	762	5.7%	708	5.7%	734	6.1%	712	6.0%
	Black	1,561	11.7%	1,358	11.0%	1,340	11.1%	1,305	11.0%
	Hispanic	1,308	9.8%	1,345	10.8%	1,293	10.7%	1,283	10.9%
	Ntv Hawaiian/Pac. Islander	9	0.1%	18	0.1%	27	0.2%	21	0.2%
	Other	117	0.9%	106	0.9%	118	1.0%	115	1.0%
	Unknown	55	0.4%	58	0.5%	55	0.5%	67	0.6%
	White	9,298	69.9%	8,623	69.5%	8,314	68.9%	8,130	68.8%
GOBHI	Am. Indian/Alaskan Ntv	795	2.5%	787	2.5%	790	2.5%	811	2.6%
	Asian or Pac. Islanders	185	0.6%	187	0.6%	189	0.6%	185	0.6%
	Black	325	1.0%	289	0.9%	311	1.0%	312	1.0%
	Hispanic	6,088	19.2%	6,193	20.0%	6,527	20.7%	6,556	20.7%
	Ntv Hawaiian/Pac. Islander	21	0.1%	20	0.1%	28	0.1%	42	0.1%
	Other	134	0.4%	122	0.4%	119	0.4%	110	0.3%
	Unknown	250	0.8%	243	0.8%	271	0.9%	273	0.9%
	White	23,883	75.4%	23,180	74.7%	23,362	73.9%	23,341	73.8%
JBH	Am. Indian/Alaskan Ntv	2,112	3.1%	2,091	3.1%	2,096	3.1%	2,054	3.1%
	Asian or Pac. Islanders	353	0.5%	324	0.5%	319	0.5%	334	0.5%
	Black	660	1.0%	676	1.0%	662	1.0%	666	1.0%
	Hispanic	5,290	7.7%	5,325	8.0%	5,448	8.2%	5,663	8.5%
	Ntv Hawaiian/Pac. Islander	70	0.1%	73	0.1%	81	0.1%	92	0.1%
	Other	249	0.4%	250	0.4%	227	0.3%	228	0.3%
	Unknown	573	0.8%	605	0.9%	632	0.9%	670	1.0%
	White	59,369	86.4%	57,426	86.0%	57,266	85.8%	56,620	85.4%
LaneCare	Am. Indian/Alaskan Ntv	703	1.9%	697	1.9%	719	2.0%	657	1.8%
	Asian or Pac. Islanders	519	1.4%	502	1.4%	504	1.4%	492	1.4%
	Black	891	2.4%	868	2.4%	870	2.4%	865	2.4%
	Hispanic	2,691	7.3%	2,718	7.5%	2,804	7.7%	2,831	7.9%
	Ntv Hawaiian/Pac. Islander	31	0.1%	28	0.1%	32	0.1%	29	0.1%
	Other	206	0.6%	188	0.5%	192	0.5%	201	0.6%
	Unknown	391	1.1%	412	1.1%	433	1.2%	452	1.3%
	White	31,607	85.3%	30,680	85.0%	30,647	84.7%	30,449	84.6%

¹ Enrolled: Eligible for OHP and enrolled in an MHO² Percentage formula: n=unique enrolled by ethnicity/d=MHO total enrolled

TABLE 5: UNIQUE ENROLLED¹ BY ETHNICITY (Continued)

MHO	Ethnicity	2004		2005					
		4 th Qtr	% of MHO Qtr Total ²	1 st Qtr	% of MHO Qtr Total	2 nd Qtr	% of MHO Qtr Total	3 rd Qtr	% of MHO Qtr Totals
MVBCN	Am. Indian/Alaskan Ntv	1,399	1.9%	1,189	1.7%	1,223	1.7%	1,242	1.7%
	Asian or Pac. Islanders	950	1.3%	914	1.3%	922	1.3%	916	1.3%
	Black	1,031	1.4%	1,025	1.4%	991	1.4%	987	1.4%
	Hispanic	17,033	23.3%	16,968	23.7%	17,700	24.5%	17,938	24.7%
	Ntv Hawaiian/Pac. Islander	141	0.2%	161	0.2%	167	0.2%	191	0.3%
	Other	328	0.4%	319	0.4%	306	0.4%	306	0.4%
	Unknown	439	0.6%	441	0.6%	456	0.6%	455	0.6%
	White	51,635	70.8%	50,482	70.6%	50,396	69.8%	50,604	69.7%
Verity	Am. Indian/Alaskan Ntv	1,577	2.1%	1,503	2.0%	1,520	2.0%	1,536	2.1%
	Asian or Pac. Islanders	6,095	8.0%	5,898	8.0%	5,827	7.8%	5,802	7.8%
	Black	12,610	16.5%	12,216	16.5%	12,348	16.6%	12,279	16.5%
	Hispanic	10,673	14.0%	10,701	14.4%	11,222	15.0%	11,355	15.3%
	Ntv Hawaiian/Pac. Islander	50	0.1%	74	0.1%	91	0.1%	101	0.1%
	Other	638	0.8%	617	0.8%	614	0.8%	590	0.8%
	Unknown	498	0.7%	484	0.7%	522	0.7%	531	0.7%
	White	44,115	57.9%	42,611	57.5%	42,466	56.9%	42,173	56.7%
Washington	Am. Indian/Alaskan Ntv	289	0.9%	275	0.8%	266	0.8%	264	0.8%
	Asian or Pac. Islanders	2,077	6.2%	2,013	6.1%	2,033	6.0%	1,985	5.9%
	Black	1,615	4.9%	1,561	4.7%	1,621	4.8%	1,588	4.7%
	Hispanic	9,773	29.4%	10,073	30.5%	10,702	31.5%	10,885	32.5%
	Ntv Hawaiian/Pac. Islander	43	0.1%	51	0.2%	56	0.2%	74	0.2%
	Other	294	0.9%	299	0.9%	307	0.9%	293	0.9%
	Unknown	340	1.0%	344	1.0%	351	1.0%	358	1.1%
	White	18,849	56.6%	18,457	55.8%	18,642	54.9%	18,091	53.9%
Totals	Am. Indian/Alaskan Ntv	8,789	2.3%	8,313	2.2%	8,404	2.2%	8,329	2.2%
	Asian or Pac. Islanders	11,650	3.0%	11,265	3.0%	11,254	3.0%	11,152	2.9%
	Black	19,440	5.0%	18,742	5.0%	18,903	5.0%	18,819	5.0%
	Hispanic	60,250	15.5%	60,846	16.1%	63,553	16.7%	64,549	17.0%
	Ntv Hawaiian/Pac. Islander	408	0.1%	480	0.1%	544	0.1%	634	0.2%
	Other	2,251	0.6%	2,175	0.6%	2,144	0.6%	2,077	0.5%
	Unknown	2,888	0.7%	2,941	0.8%	3,085	0.8%	3,151	0.8%
	White	282,066	72.7%	273,584	72.3%	272,942	71.7%	270,988	71.4%

¹ Enrolled: Eligible for OHP and enrolled in an MHO

² Percentage formula: n=unique enrolled by ethnicity/d=MHO total enrolled

TABLE 5: UNIQUE ENROLLED¹ BY ETHNICITY (Continued)

MHO Contractors	Ethnicity	2004		2005					
		4 th Qtr	% of MHO Qtr Total	1 st Qtr	% of MHO Qtr Total	2 nd Qtr	% of MHO Qtr Total	3 rd Qtr	% of MHO Qtr Total
All Eligibles ²	Am. Indian/Alaskan Ntv	10,735	2.5%	10,295	2.4%	10,153	2.4%	9,934	2.4%
	Asian or Pac. Islanders	12,949	3.0%	12,628	3.0%	12,479	2.9%	12,415	2.9%
	Black	19,803	4.6%	19,503	4.6%	19,585	4.6%	19,668	4.7%
	Hispanic	79,739	18.6%	80,077	18.9%	81,877	19.3%	82,214	19.5%
	Ntv Hawaiian/Pac. Islander	563	0.1%	619	0.1%	668	0.2%	760	0.2%
	Other	2,385	0.6%	2,325	0.5%	2,277	0.5%	2,203	0.5%
	Unknown	3,085	0.7%	3,175	0.7%	3,269	0.8%	3,397	0.8%
	White	299,830	69.9%	295,053	69.6%	293,811	69.3%	291,284	69.0%
Fee-For-Service ³ (FFS)	Am. Indian/Alaskan Ntv	1,946	4.7%	1,982	4.4%	1,749	4.0%	1,605	3.8%
	Asian or Pac. Islanders	1,299	3.1%	1,363	3.0%	1,225	2.8%	1,263	3.0%
	Black	363	0.9%	761	1.7%	682	1.6%	849	2.0%
	Hispanic	19,489	47.1%	19,231	42.4%	18,324	42.3%	17,665	41.9%
	Ntv Hawaiian/Pac. Islander	155	0.4%	139	0.3%	124	0.3%	126	0.3%
	Other	134	0.3%	150	0.3%	133	0.3%	126	0.3%
	Unknown	197	0.5%	234	0.5%	184	0.4%	246	0.6%
	White	17,764	43.0%	21,469	47.4%	20,869	48.2%	20,296	48.1%

n=unique enrolled by ethnicity/d=MHO total enrolled

¹ Enrolled: Eligible for OHP and enrolled in an MHO² Eligibles: Both Enrolled and FFS³ Fee-For-Service (FFS): Eligible for OHP and NOT enrolled with an MHO (Open Card)

Unique Served

FIGURE 4: UNIQUE¹ SERVED BY MHO

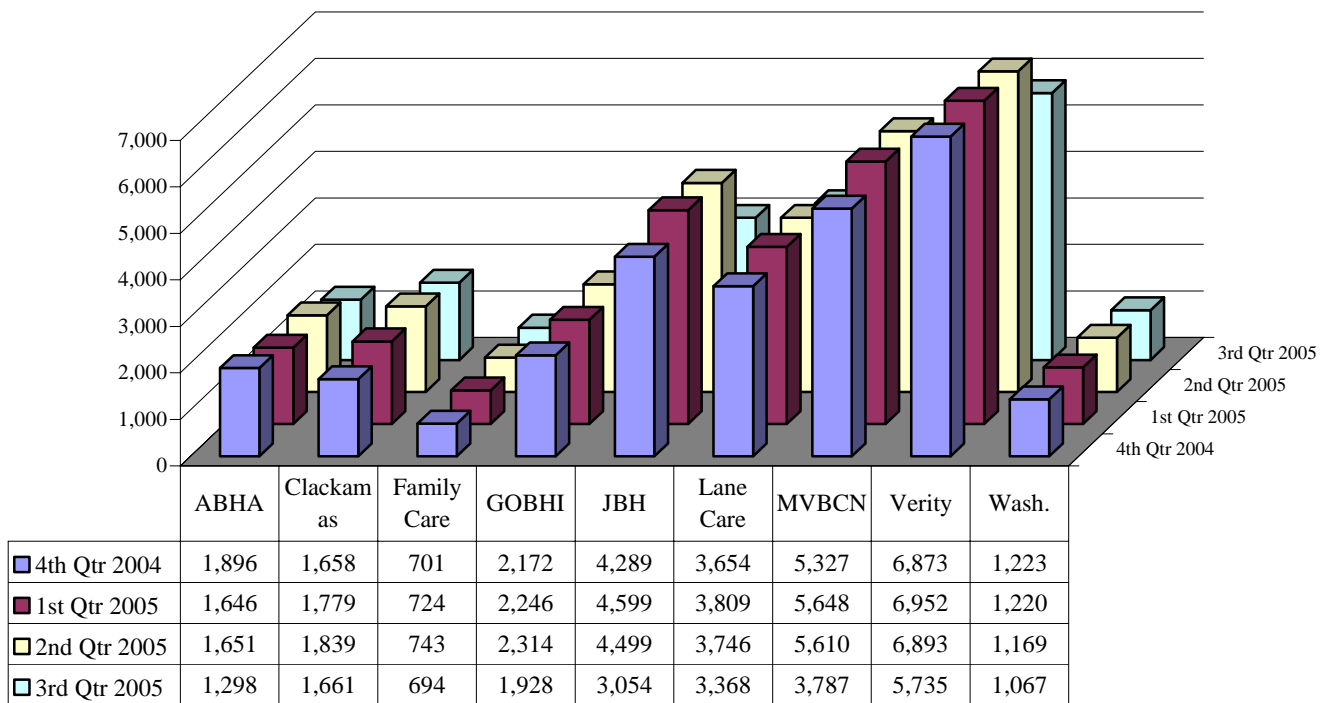


TABLE 6: UNIQUE SERVED BY MHO AND PERCENTAGE RATE²

MHO Contractors	2004		2005					
	4 th Qtr	% Rate	1 st Qtr	% Rate	2 nd Qtr	% Rate	3 rd Qtr	% Rate
ABHA	1,896	6.8%	1,646	6.0%	1,651	6.1%	1,298	4.8%
Clackamas	1,658	6.3%	1,779	6.8%	1,839	7.0%	1,661	6.3%
FamilyCare	701	5.3%	724	5.8%	743	6.2%	694	5.9%
GOBHI	2,172	6.9%	2,246	7.2%	2,314	7.3%	1,928	6.1%
JBH	4,289	6.2%	4,599	6.9%	4,499	6.7%	3,054	4.6%
LaneCare	3,654	9.9%	3,809	10.6%	3,746	10.3%	3,368	9.4%
MVBCN	5,327	7.3%	5,648	7.9%	5,610	7.8%	3,787	5.2%
Verity	6,873	9.0%	6,952	9.4%	6,893	9.2%	5,735	7.7%
Washington	1,223	3.7%	1,220	3.7%	1,169	3.4%	1,067	3.2%
Total Served	27,793	7.2%	28,623	7.6%	28,464	7.5%	22,592	5.9%
FFS	1,107	2.7%	1,180	2.5%	1,085	2.5%	998	2.3%

¹ Unique Served: All duplicated records are removed.

² Percentage Rate Formula: n=Unique Served/d=Unique Enrolled.

Data Source: DSSURS – Data pulled: 12/8/05

C:\MHO Utilization Databases\Quarterly Pulls\Contract 1004-1205\1004-0905\1004-0905 Qtr Report.doc

TABLE 7: UNIQUE¹ SERVED BY GENDER AND PERCENTAGE² RATE

MHO Contractors	Gender	2004		2005					
		4 th Qtr	Rate	1 st Qtr	Rate	2 nd Qtr	Rate	3 rd Qtr	Rate
ABHA	F	1,086	6.8%	972	6.3%	994	6.4%	796	5.1%
	M	810	6.7%	674	5.8%	657	5.7%	502	4.4%
Clackamas	F	913	6.1%	999	6.7%	1,009	6.8%	921	6.1%
	M	745	6.5%	780	6.9%	830	7.3%	740	6.5%
FamilyCare	F	411	5.6%	426	6.1%	444	6.5%	430	6.4%
	M	290	4.9%	298	5.5%	299	5.7%	264	5.2%
GOBHI	F	1,223	6.8%	1,267	7.2%	1,336	7.4%	1,122	6.2%
	M	949	7.0%	979	7.3%	978	7.2%	806	5.9%
JBH	F	2,472	6.3%	2,650	6.9%	2,576	6.7%	1,727	4.5%
	M	1,817	6.2%	1,949	6.8%	1,923	6.7%	1,327	4.7%
LaneCare	F	2,131	10.0%	2,224	10.7%	2,226	10.7%	2,008	9.7%
	M	1,523	9.7%	1,585	10.4%	1,520	9.9%	1,360	8.9%
MVBCN	F	3,050	7.4%	3,241	8.0%	3,235	7.9%	2,270	5.5%
	M	2,277	7.1%	2,407	7.7%	2,375	7.6%	1,517	4.8%
Verity	F	3,816	9.0%	3,829	9.3%	3,813	9.2%	3,241	7.8%
	M	3,057	9.0%	3,123	9.5%	3,080	9.3%	2,494	7.6%
Washington	F	694	3.7%	721	3.9%	679	3.5%	606	3.2%
	M	529	3.6%	499	3.5%	490	3.3%	461	3.2%
Total Served	F	15,796	7.2%	16,329	7.6%	16,312	7.5%	13,121	6.1%
	M	11,997	7.1%	12,294	7.5%	12,152	7.4%	9,471	5.8%
Fee-For-Service (FFS)	F	471	1.8%	498	1.8%	441	1.6%	397	1.5%
	M	636	4.2%	682	4.0%	644	4.0%	601	3.9%

¹ Unique Served: All duplicate records are removed.² Percentage Rate Formula: $n = \text{Unique Served} / d = \text{Unique Enrolled}$

Data Source: DSSURS – Data Pulled: 12/8/05

C:\MHO Utilization Databases\Quarterly Pulls\Contract 1004-1205\1004-0905\1004-0905 Qtr Report.doc

FIGURE 5: TOTAL ALL QUARTERS UNIQUE¹ SERVED BY MHO: CHILDREN (0-17) & ADULTS (18+)

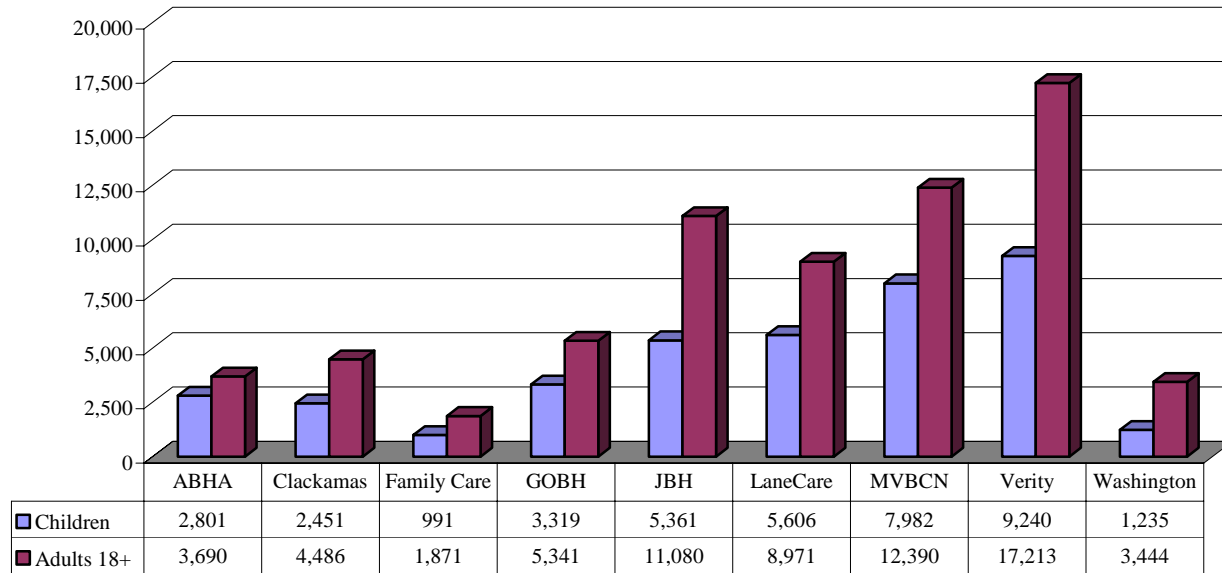


TABLE 8: UNIQUE SERVED BY MHO: CHILDREN (0-17) AND ADULTS (18+)

MHO Contractors	Age Groups	2004		2005					
		4 th Qtr	% of MHO Qtr Total ²	1 st Qtr	% of MHO Qtr Total	2 nd Qtr	% of MHO Qtr Total	3 rd Qtr	% of MHO Qtr Total
ABHA	Children	729	38.4%	772	46.9%	786	47.6%	514	39.6%
	Adults	1,167	61.6%	874	53.1%	865	52.4%	784	60.4%
Clackamas	Children	581	35.0%	645	36.3%	650	35.3%	575	34.6%
	Adults	1,077	65.0%	1,134	63.7%	1,189	64.7%	1,086	65.4%
FamilyCare	Children	228	32.5%	243	33.6%	281	37.8%	239	34.4%
	Adults	473	67.5%	481	66.4%	462	62.2%	455	65.6%
GOBHI	Children	756	34.8%	875	39.0%	939	40.6%	749	38.8%
	Adults	1,416	65.2%	1,371	61.0%	1,375	59.4%	1,179	61.2%
JBH	Children	1,278	29.8%	1,516	33.0%	1,538	34.2%	1,029	33.7%
	Adults	3,011	70.2%	3,083	67.0%	2,961	65.8%	2,025	66.3%
LaneCare	Children	1,367	37.4%	1,479	38.8%	1,483	39.6%	1,277	37.9%
	Adults	2,287	62.6%	2,330	61.2%	2,263	60.4%	2,091	62.1%
MVBCN	Children	2,002	37.6%	2,248	39.8%	2,265	40.4%	1,467	38.7%
	Adults	3,325	62.4%	3,400	60.2%	3,345	59.6%	2,320	61.3%
Verity	Children	2,273	33.1%	2,443	35.1%	2,548	37.0%	1,976	34.5%
	Adults	4,600	66.9%	4,509	64.9%	4,345	63.0%	3,759	65.5%
Washington	Children	303	24.8%	311	25.5%	325	27.8%	296	27.7%
	Adults	920	75.2%	909	74.5%	844	72.2%	771	72.3%

¹ Unique Served: All duplicate records are removed.

² Percentage formula: n=unique number for children or adults/d=total children and adults

Data Source: DSSURS – Data Pulled: 12/8/05

C:\MHO Utilization Databases\Quarterly Pulls\Contract 1004-1205\1004-0905\1004-0905 Qtr Report.doc

TABLE 9: UNIQUE¹ SERVED BY MHO/AGE GROUP AND PERCENTAGE² RATE

MHO Contractors	Age Groups	2004		2005					
		4 th Qtr	Rate	1 st Qtr	Rate	2 nd Qtr	Rate	3 rd Qtr	Rate
ABHA	0-17	729	5.0%	772	5.2%	786	5.2%	514	3.4%
	18-64	1,121	9.6%	829	7.7%	822	7.9%	741	7.4%
	65+	46	2.6%	45	2.6%	43	2.5%	43	2.5%
Clackamas	0-17	581	4.0%	645	4.4%	650	4.3%	575	3.8%
	18-64	1,025	10.3%	1,087	11.5%	1,134	12.4%	1,044	11.6%
	65+	52	2.6%	47	2.4%	55	2.8%	42	2.0%
FamilyCare	0-17	228	3.4%	243	3.7%	281	4.2%	239	3.6%
	18-64	468	7.4%	476	8.8%	458	9.1%	451	9.3%
	65+	5	1.4%	5	1.4%	4	1.2%	4	1.2%
GOBHI	0-17	756	4.5%	875	5.1%	939	5.2%	749	4.1%
	18-64	1,347	10.8%	1,297	11.2%	1,313	11.5%	1,122	10.0%
	65+	69	3.0%	74	3.3%	62	2.8%	57	2.5%
JBH	0-17	1,278	3.8%	1,516	4.5%	1,538	4.4%	1,029	2.9%
	18-64	2,921	9.7%	2,984	10.6%	2,873	10.4%	1,970	7.3%
	65+	90	2.0%	99	2.2%	88	2.0%	55	1.2%
LaneCare	0-17	1,367	7.5%	1,479	8.1%	1,483	7.9%	1,277	6.8%
	18-64	2,222	13.1%	2,267	14.2%	2,200	14.1%	2,035	13.4%
	65+	65	3.4%	63	3.3%	63	3.3%	56	3.0%
MVBCN	0-17	2,002	4.8%	2,248	5.4%	2,265	5.3%	1,467	3.3%
	18-64	3,150	11.5%	3,229	12.6%	3,172	12.7%	2,235	9.1%
	65+	175	4.0%	171	4.0%	173	4.1%	85	2.0%
Verity	0-17	2,273	6.1%	2,443	6.5%	2,548	6.5%	1,976	5.0%
	18-64	4,237	13.1%	4,135	13.7%	3,999	13.6%	3,461	12.0%
	65+	363	5.7%	374	6.0%	346	5.6%	298	4.8%
Washington	0-17	303	1.5%	311	1.5%	325	1.5%	296	1.4%
	18-64	862	7.7%	862	8.2%	804	7.8%	727	7.5%
	65+	58	2.5%	47	2.0%	40	1.7%	44	1.8%
Total Served	0-17	9,517	4.7%	10,532	5.1%	10,815	5.1%	8,122	3.8%
	18-64	17,353	10.9%	17,166	11.6%	16,775	11.7%	13,786	9.8%
	65+	923	3.6%	925	3.6%	874	3.4%	684	2.7%

Draft

¹ Unique Served: All duplicate records are removed.

² Percentage Rate Formula: $n = \text{Unique Served} / d = \text{Unique Enrolled}$.

Data Source: DSSURS – Data Pulled: 12/8/05

C:\MHO Utilization Databases\Quarterly Pulls\Contract 1004-1205\1004-0905\1004-0905 Qtr Report.doc

FIGURE 6: TOTAL UNIQUE¹ SERVED BY ETHNICITY

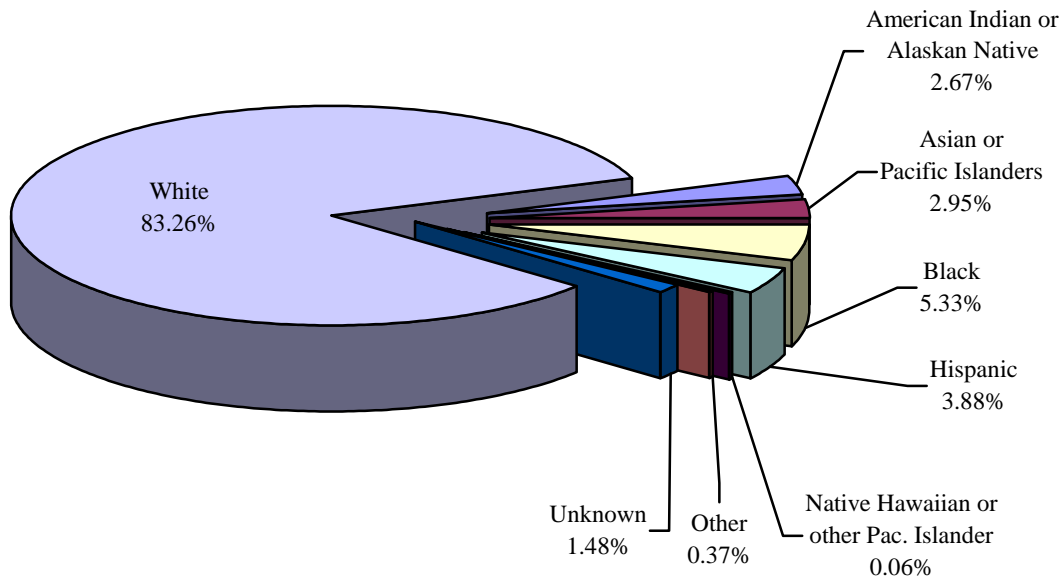


TABLE 10: UNIQUE SERVED BY MHO/ETHNICITY AND PERCENTAGE² RATE

MHO	Race Description	2004		2005					
		4 th Qtr	Rate	1 st Qtr	Rate	2 nd Qtr	Rate	3 rd Qtr	Rate
ABHA	Am. Indian/Alaskan Ntv	31	2.3%	34	2.8%	36	3.0%	29	2.5%
	Asian or Pacific Islanders	7	3.0%	5	2.2%	3	1.2%	3	1.2%
	Black	16	6.1%	16	6.5%	13	5.0%	18	6.2%
	Hispanic	53	1.9%	39	1.4%	38	1.3%	27	0.9%
	Ntv Hawaiian/Pac. Islander	2	10.0%	1	4.3%	1	3.3%	0	0.0%
	Other	6	4.3%	4	3.0%	6	4.7%	4	3.6%
	Unknown	25	14.5%	20	11.2%	20	11.4%	18	11.2%
	White	1756	7.6%	1527	6.8%	1534	6.9%	1199	5.5%
Clackamas	Am. Indian/Alaskan Ntv	22	5.6%	25	6.4%	20	4.9%	18	4.3%
	Asian or Pacific Islanders	22	4.6%	23	4.7%	23	4.8%	18	3.7%
	Black	31	6.4%	34	6.8%	35	7.0%	30	5.7%
	Hispanic	51	1.1%	73	1.6%	85	1.8%	71	1.4%
	Ntv Hawaiian/Pac. Islander	3	13.0%	3	9.4%	3	9.4%	2	4.4%
	Other	5	3.4%	2	1.4%	2	1.5%	4	3.3%
	Unknown	14	8.2%	15	8.6%	19	10.1%	14	7.6%
	White	1510	7.5%	1604	8.1%	1652	8.4%	1504	7.7%

¹ Unique Served: All duplicate records are removed.

² Percentage Rate Formula: n=Unique Served/d=Unique Enrolled.

Data Source: DSSURS – Data Pulled: 12/8/05

C:\MHO Utilization Databases\Quarterly Pulls\Contract 1004-1205\1004-0905\1004-0905 Qtr Report.doc

**TABLE 10: UNIQUE¹ SERVED BY MHO/ETHNICITY AND PERCENTAGE² RATE
(continued)**

MHO	Race Description	2004		2005					
		4 th Qtr	Rate	1 st Qtr	Rate	2 nd Qtr	Rate	3 rd Qtr	Rate
FamilyCare	Am. Indian/Alaskan Ntv	15	7.8%	15	8.2%	19	9.8%	21	11.2%
	Asian or Pacific Islanders	29	3.8%	26	3.7%	35	4.8%	37	5.2%
	Black	72	4.6%	73	5.4%	75	5.6%	65	5.0%
	Hispanic	20	1.5%	28	2.1%	24	1.9%	19	1.5%
	Ntv Hawaiian/Pac. Islander	0	0.0%	1	5.6%	1	3.7%	0	0.0%
	Other	1	0.9%	2	1.9%	3	2.5%	3	2.6%
	Unknown	5	9.1%	6	10.3%	5	9.1%	7	10.4%
	White	559	6.0%	573	6.6%	581	7.0%	542	6.7%
GOBHI	Am. Indian/Alaskan Ntv	58	7.3%	43	5.5%	55	7.0%	52	6.4%
	Asian or Pacific Islanders	8	4.3%	8	4.3%	7	3.7%	5	2.7%
	Black	21	6.5%	22	7.6%	17	5.5%	16	5.1%
	Hispanic	142	2.3%	146	2.4%	168	2.6%	141	2.2%
	Ntv Hawaiian/Pac. Islander	1	4.8%	1	5.0%	1	3.6%	2	4.8%
	Other	4	3.0%	4	3.3%	7	5.9%	5	4.5%
	Unknown	30	12.0%	39	16.0%	45	16.6%	45	16.5%
	White	1908	8.0%	1983	8.6%	2014	8.6%	1662	7.1%
JBH	Am. Indian/Alaskan Ntv	131	6.2%	135	6.5%	137	6.5%	94	4.6%
	Asian or Pacific Islanders	12	3.4%	11	3.4%	14	4.4%	11	3.3%
	Black	54	8.2%	50	7.4%	50	7.6%	38	5.7%
	Hispanic	119	2.2%	121	2.3%	135	2.5%	94	1.7%
	Ntv Hawaiian/Pac. Islander	1	1.4%	1	1.4%	1	1.2%	3	3.3%
	Other	12	4.8%	13	5.2%	16	7.0%	13	5.7%
	Unknown	64	11.2%	73	12.1%	73	11.6%	53	7.9%
	White	3896	6.6%	4195	7.3%	4073	7.1%	2748	4.9%
LaneCare	Am. Indian/Alaskan Ntv	66	9.4%	62	8.9%	63	8.8%	61	9.3%
	Asian or Pacific Islanders	25	4.8%	27	5.4%	24	4.8%	24	4.9%
	Black	80	9.0%	82	9.4%	88	10.1%	87	10.1%
	Hispanic	90	3.3%	95	3.5%	90	3.2%	82	2.9%
	Ntv Hawaiian/Pac. Islander	1	3.2%	0	0.0%	0	0.0%	0	0.0%
	Other	15	7.3%	14	7.4%	16	8.3%	14	7.0%
	Unknown	93	23.8%	107	26.0%	109	25.2%	100	22.1%
	White	3284	10.4%	3422	11.2%	3356	11.0%	3000	9.9%

¹ Unique Served: All duplicate records are removed.

² Percentage Rate Formula: n=Unique Served/d=Unique Enrolled.

Data Source: DSSURS – Data Pulled: 12/8/05

C:\MHO Utilization Databases\Quarterly Pulls\Contract 1004-1205\1004-0905\1004-0905 Qtr Report.doc

**TABLE 10: UNIQUE¹ SERVED BY MHO/ETHNICITY AND PERCENTAGE² RATE
(continued)**

MHO	Race Description	2004		2005					
		4 th Qtr	Rate	1 st Qtr	Rate	2 nd Qtr	Rate	3 rd Qtr	Rate
MVBCN	Am. Indian/Alaskan Ntv	15	7.8%	15	8.2%	19	9.8%	21	11.2%
	Asian or Pac. Islanders	29	3.8%	26	3.7%	35	4.8%	37	5.2%
	Black	72	4.6%	73	5.4%	75	5.6%	65	5.0%
	Hispanic	20	1.5%	28	2.1%	24	1.9%	19	1.5%
	Ntv Hawaiian/Pac. Islander	0	0.0%	1	5.6%	1	3.7%	0	0.0%
	Other	1	0.9%	2	1.9%	3	2.5%	3	2.6%
	Unknown	5	9.1%	6	10.3%	5	9.1%	7	10.4%
	White	559	6.0%	573	6.6%	581	7.0%	542	6.7%
Verity	Am. Indian/Alaskan Ntv	58	7.3%	43	5.5%	55	7.0%	52	6.4%
	Asian or Pacific Islanders	8	4.3%	8	4.3%	7	3.7%	5	2.7%
	Black	21	6.5%	22	7.6%	17	5.5%	16	5.1%
	Hispanic	142	2.3%	146	2.4%	168	2.6%	141	2.2%
	Ntv Hawaiian/Pac. Islander	1	4.8%	1	5.0%	1	3.6%	2	4.8%
	Other	4	3.0%	4	3.3%	7	5.9%	5	4.5%
	Unknown	30	12.0%	39	16.0%	45	16.6%	45	16.5%
	White	1908	8.0%	1983	8.6%	2014	8.6%	1662	7.1%
Washington	Am. Indian/Alaskan Ntv	131	6.2%	135	6.5%	137	6.5%	94	4.6%
	Asian or Pacific Islanders	12	3.4%	11	3.4%	14	4.4%	11	3.3%
	Black	54	8.2%	50	7.4%	50	7.6%	38	5.7%
	Hispanic	119	2.2%	121	2.3%	135	2.5%	94	1.7%
	Ntv Hawaiian/Pac. Islander	1	1.4%	1	1.4%	1	1.2%	3	3.3%
	Other	12	4.8%	13	5.2%	16	7.0%	13	5.7%
	Unknown	64	11.2%	73	12.1%	73	11.6%	53	7.9%
	White	3896	6.6%	4195	7.3%	4073	7.1%	2748	4.9%
Total Served	Am. Indian/Alaskan Ntv	66	9.4%	62	8.9%	63	8.8%	61	9.3%
	Asian or Pacific Islanders	25	4.8%	27	5.4%	24	4.8%	24	4.9%
	Black	80	9.0%	82	9.4%	88	10.1%	87	10.1%
	Hispanic	90	3.3%	95	3.5%	90	3.2%	82	2.9%
	Ntv Hawaiian/Pac. Islander	1	3.2%	0	0.0%	0	0.0%	0	0.0%
	Other	15	7.3%	14	7.4%	16	8.3%	14	7.0%
	Unknown	93	23.8%	107	26.0%	109	25.2%	100	22.1%
	White	3284	10.4%	3422	11.2%	3356	11.0%	3000	9.9%

¹ Unique Served: All duplicate records are removed.

² Percentage Rate Formula: n=Unique Served/d=Unique Enrolled.

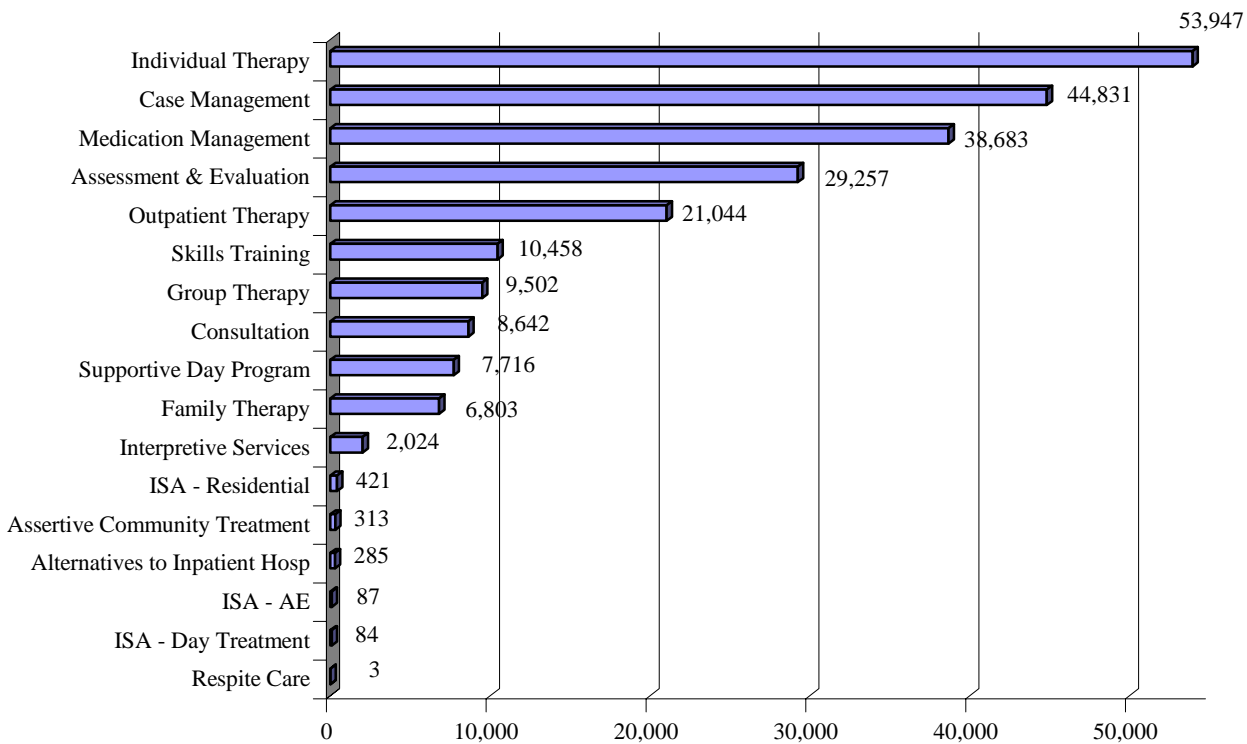
Data Source: DSSURS – Data Pulled: 12/8/05

C:\MHO Utilization Databases\Quarterly Pulls\Contract 1004-1205\1004-0905\1004-0905 Qtr Report.doc

TABLE 10: UNIQUE¹ SERVED BY MHO/ETHNICITY AND PERCENTAGE² RATE
(continued)

MHO	Race Description	2004		2005					
		4 th Qtr	Rate	1 st Qtr	Rate	2 nd Qtr	Rate	3 rd Qtr	Rate
FFS	Am. Indian/Alaskan Ntv	128	6.6%	103	5.2%	102	5.8%	101	6.3%
	Asian or Pacific Islanders	11	0.8%	10	0.7%	7	0.6%	8	0.6%
	Black	55	15.2%	57	7.5%	58	8.5%	49	5.8%
	Hispanic	28	0.1%	29	0.2%	28	0.2%	19	0.1%
	Ntv Hawaiian/Pac. Islander	0	0.0%	0	0.0%	0	0.0%	0	0.0%
	Other	2	1.5%	1	0.7%	1	0.7%	3	2.4%
	Unknown	22	11.2%	28	12.0%	29	15.8%	27	11.0%
	White	861	4.8%	952	4.4%	860	4.1%	791	3.9%

FIGURE 7: TOTAL ALL QUARTERS: UNIQUE¹ ENCOUNTERS BY SERVICE CATEGORIES



¹ Unique Served: All duplicate records are removed.

² Percentage Rate Formula: n=Unique Served/d=Unique Enrolled.

¹ Unique: All duplicate records are removed.

Data Source: DSSURS – Data Pulled: 12/8/05

C:\MHO Utilization Databases\Quarterly Pulls\Contract 1004-1205\1004-0905\1004-0905 Qtr Report.doc

**TABLE 11: UNIQUE ENCOUNTERS² BY MHO/SERVICE CATEGORIES
(ABHA & CLACKAMAS)**

MHO Contractors	Service Categories	2004	2005		
		4 th Qtr	1 st Qtr	2 nd Qtr	3 rd Qtr
ABHA	Alternatives to Inpatient Hosp	0	1	0	0
	Assertive Community Treatment	5	7	14	16
	Assessment & Evaluation	602	531	538	388
	Case Management	620	548	630	530
	Consultation	184	251	227	157
	Family Therapy	125	165	142	85
	Group Therapy	185	216	213	132
	Individual Therapy	1,143	992	977	792
	Interpretive Services	1	0	1	0
	ISA - AE	0	0	0	0
	ISA - Day Treatment	0	0	0	0
	ISA - Residential	18	24	24	24
	Medication Management	591	503	450	247
	Outpatient Therapy	296	324	305	219
	Respite Care	0	0	0	0
	Skills Training	77	69	56	56
	Supportive Day Program	101	86	93	91
Clackamas	Alternatives to Inpatient Hosp	3	5	3	3
	Assertive Community Treatment	0	0	0	0
	Assessment & Evaluation	514	543	524	420
	Case Management	847	980	1,014	932
	Consultation	221	218	216	185
	Family Therapy	34	55	49	39
	Group Therapy	126	102	108	108
	Individual Therapy	676	761	750	675
	Interpretive Services	5	6	6	4
	ISA - AE	0	0	0	0
	ISA - Day Treatment	0	0	0	0
	ISA - Residential	14	13	13	8
	Medication Management	519	575	599	516
	Outpatient Therapy	317	311	332	276
	Respite Care	0	0	0	0
	Skills Training	93	109	127	108
	Supportive Day Program	94	77	68	69

² Encounters: A contact or admission for covered services to OHP Member

Data Source: DSSURS – Data Pulled: 12/8/05

C:\MHO Utilization Databases\Quarterly Pulls\Contract 1004-1205\1004-0905\1004-0905 Qtr Report.doc

**TABLE 11: UNIQUE¹ ENCOUNTERS² BY MHO/SERVICE CATEGORIES
(FAMILYCARE & GOBHI) (Continued)**

MHO Contractors	Service Categories	2004	2005		
		4 th Qtr	1 st Qtr	2 nd Qtr	3 rd Qtr
FamilyCare	Alternatives to Inpatient Hosp	1	2	0	0
	Assertive Community Treatment	0	0	0	0
	Assessment & Evaluation	184	217	220	212
	Case Management	295	280	266	233
	Consultation	33	54	44	47
	Family Therapy	34	41	45	53
	Group Therapy	80	72	61	35
	Individual Therapy	315	346	376	345
	Interpretive Services	21	17	20	14
	ISA - AE	0	0	7	3
	ISA - Day Treatment	0	3	0	0
	ISA - Residential	0	0	0	0
	Medication Management	239	214	196	198
	Outpatient Therapy	119	110	133	115
	Respite Care	0	0	0	0
	Skills Training	57	45	69	72
Supportive Day Program	64	58	43	49	
GOBHI	Alternatives to Inpatient Hosp	0	0	0	0
	Assertive Community Treatment	15	52	61	31
	Assessment & Evaluation	665	657	856	648
	Case Management	1,053	1,067	1,056	823
	Consultation	129	160	195	190
	Family Therapy	83	126	179	131
	Group Therapy	214	203	191	126
	Individual Therapy	837	911	1,173	991
	Interpretive Services	2	0	5	6
	ISA - AE	4	1	0	0
	ISA - Day Treatment	0	0	0	0
	ISA - Residential	0	0	0	0
	Medication Management	878	847	651	639
	Outpatient Therapy	367	384	488	342
	Respite Care	2	0	1	0
	Skills Training	251	263	283	293
Supportive Day Program	207	201	170	139	

¹ Unique Served: All duplicate records are removed.² Encounters: A contact or admission for covered services to OHP Member.

TABLE 11: UNIQUE¹ ENCOUNTERS² BY MHO/SERVICE CATEGORIES (JBH & LANE CARE) (Continued)

MHO Contractors	Service Categories	2004	2005		
		4 th Qtr	1 st Qtr	2 nd Qtr	3 rd Qtr
JBH	Alternatives to Inpatient Hosp	21	28	19	16
	Assertive Community Treatment	0	1	0	0
	Assessment & Evaluation	1,484	1,601	1,305	732
	Case Management	1,642	1,748	1,620	1,193
	Consultation	283	323	294	278
	Family Therapy	255	314	308	185
	Group Therapy	306	311	293	204
	Individual Therapy	1,614	1,792	1,745	1,068
	Interpretive Services	3	1	0	2
	ISA - AE	18	18	21	15
	ISA - Day Treatment	0	0	0	0
	ISA - Residential	17	15	20	18
	Medication Management	1,831	2,083	2,035	1,227
	Outpatient Therapy	737	883	853	617
	Respite Care	0	0	0	0
	Skills Training	245	280	251	238
	Supportive Day Program	111	135	121	114
LaneCare	Alternatives to Inpatient Hosp	20	21	18	8
	Assertive Community Treatment	27	20	32	14
	Assessment & Evaluation	1,077	1,160	1,034	797
	Case Management	972	1,044	1,112	924
	Consultation	245	233	178	170
	Family Therapy	147	168	174	113
	Group Therapy	164	224	179	151
	Individual Therapy	2,759	2,779	2,772	2,588
	Interpretive Services	8	7	0	1
	ISA - AE	0	0	0	0
	ISA - Day Treatment	0	0	0	0
	ISA - Residential	0	0	0	1
	Medication Management	617	686	671	548
	Outpatient Therapy	818	896	914	856
	Respite Care	0	0	0	0
	Skills Training	120	126	118	112
	Supportive Day Program	271	269	243	237

¹ Unique Served: All duplicate records are removed.

² Encounters: A contact or admission for covered services to OHP Member.

Data Source: DSSURS – Data Pulled: 12/8/05

C:\MHO Utilization Databases\Quarterly Pulls\Contract 1004-1205\1004-0905\1004-0905 Qtr Report.doc

**TABLE 11: UNIQUE¹ ENCOUNTERS² BY MHO/SERVICE CATEGORIES
(MVBCN & VERITY) (Continued)**

MHO Contractors	Service Categories	2004	2005		
		4 th Qtr	1 st Qtr	2 nd Qtr	3 rd Qtr
MVBCN	Alternatives to Inpatient Hosp	0	0	0	0
	Assertive Community Treatment	10	5	1	1
	Assessment & Evaluation	1,578	1,720	1,528	736
	Case Management	2,327	2,480	2,362	1,335
	Consultation	608	687	642	267
	Family Therapy	343	383	393	199
	Group Therapy	361	447	416	237
	Individual Therapy	3,028	3,282	3,173	2,120
	Interpretive Services	5	6	1	3
	ISA - AE	0	0	0	0
	ISA - Day Treatment	0	0	0	0
	ISA - Residential	0	0	0	0
	Medication Management	2,342	2,445	2,481	1,415
	Outpatient Therapy	1,029	1,147	1,277	831
	Respite Care	0	0	0	0
	Skills Training	384	406	393	193
	Supportive Day Program	82	74	65	16
Verity	Alternatives to Inpatient Hosp	27	35	18	21
	Assertive Community Treatment	0	0	0	0
	Assessment & Evaluation	1,622	1,469	1,411	914
	Case Management	3,478	3,577	3,520	2,753
	Consultation	385	443	427	238
	Family Therapy	530	640	701	476
	Group Therapy	1,038	1,113	957	538
	Individual Therapy	2,590	2,740	2,780	2,133
	Interpretive Services	381	442	408	244
	ISA - AE	0	0	0	0
	ISA - Day Treatment	20	30	18	13
	ISA - Residential	44	42	55	47
	Medication Management	3,069	2,928	2,724	2,194
	Outpatient Therapy	1,299	1,385	1,432	1,082
	Respite Care	0	0	0	0
	Skills Training	1,224	1,230	1,433	1,171
	Supportive Day Program	1,177	1,116	1,080	918

¹ Unique Served: All duplicate records are removed.² Encounters: A contact or admission for covered services to OHP Member.

Data Source: DSSURS – Data Pulled: 12/8/05

C:\MHO Utilization Databases\Quarterly Pulls\Contract 1004-1205\1004-0905\1004-0905 Qtr Report.doc

**TABLE 11: UNIQUE¹ ENCOUNTERS² BY MHO/SERVICE CATEGORIES
(WASHINGTON & TOTAL) (*Continued*)**

MHO Contractors	Service Categories	2004	2005		
		4 th Qtr	1 st Qtr	2 nd Qtr	3 rd Qtr
Washington	Alternatives to Inpatient Hosp	4	2	5	4
	Assertive Community Treatment	1	0	0	0
	Assessment & Evaluation	402	369	318	281
	Case Management	396	421	401	352
	Consultation	95	104	117	114
	Family Therapy	14	17	34	23
	Group Therapy	98	108	111	74
	Individual Therapy	725	773	755	671
	Interpretive Services	107	111	89	97
	ISA - AE	0	0	0	0
	ISA - Day Treatment	0	0	0	0
	ISA - Residential	6	7	6	5
	Medication Management	418	429	388	290
	Outpatient Therapy	110	118	120	202
	Respite Care	0	0	0	0
	Skills Training	118	136	151	101
	Supportive Day Program	12	21	16	28
Total Served	Alternatives to Inpatient Hosp	76	94	63	52
	Assertive Community Treatment	58	85	108	62
	Assessment & Evaluation	8,128	8,267	7,734	5,128
	Case Management	11,630	12,145	11,981	9,075
	Consultation	2,183	2,473	2,340	1,646
	Family Therapy	1,565	1,909	2,025	1,304
	Group Therapy	2,572	2,796	2,529	1,605
	Individual Therapy	13,687	14,376	14,501	11,383
	Interpretive Services	533	590	530	371
	ISA - AE	22	19	28	18
	ISA - Day Treatment	20	33	18	13
	ISA - Residential	99	101	118	103
	Medication Management	10,504	10,710	10,195	7,274
	Outpatient Therapy	5,092	5,558	5,854	4,540
	Respite Care	2	0	1	0
	Skills Training	2,569	2,664	2,881	2,344
	Supportive Day Program	2,119	2,037	1,899	1,661

¹ Unique Served: All duplicate records are removed.² Encounters: A contact or admission for covered services to OHP Member.

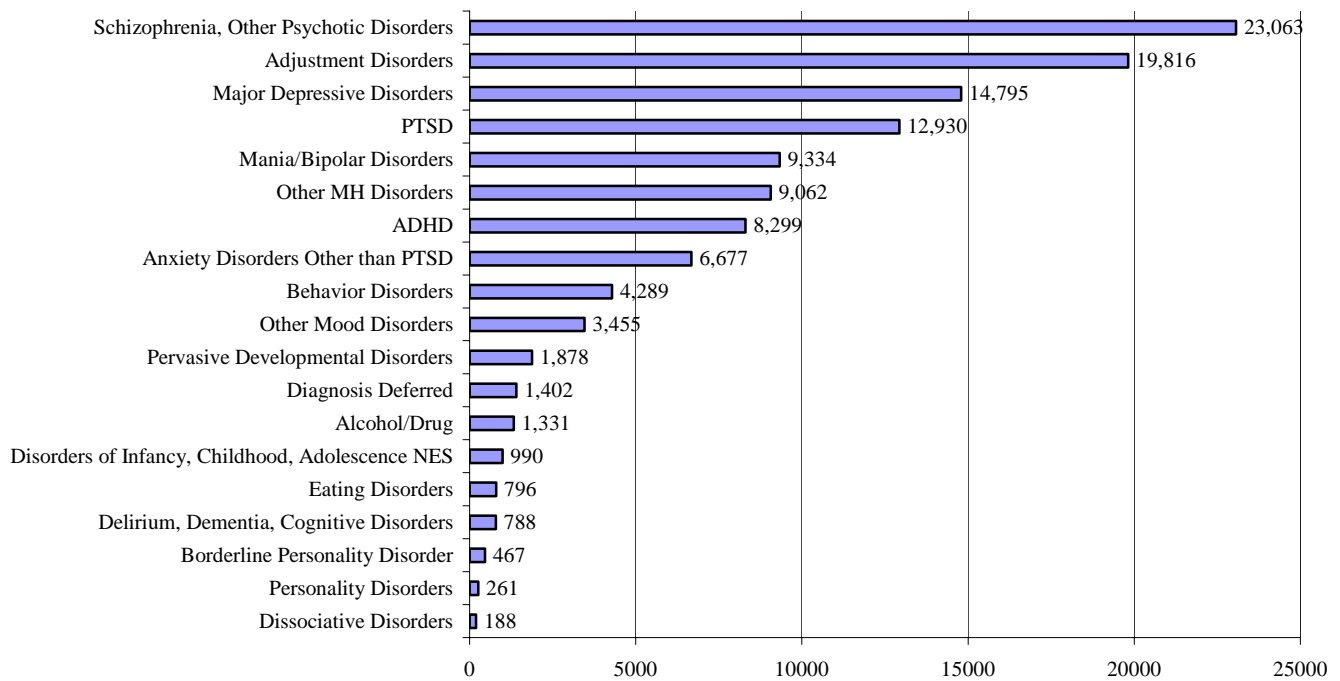
Data Source: DSSURS – Data Pulled: 12/8/05

C:\MHO Utilization Databases\Quarterly Pulls\Contract 1004-1205\1004-0905\1004-0905 Qtr Report.doc

TABLE 11: UNIQUE¹ ENCOUNTERS² BY MHO/SERVICE CATEGORIES (FEE-FOR-SERVICE³) (continued)

MHO Contractors	Service Categories	2004	2005		
		4 th Qtr	1 st Qtr	2 nd Qtr	3 rd Qtr
FFS	Alternatives to Inpatient Hosp	3	3	0	1
	Assertive Community Treatment	1	0	1	0
	Assessment & Evaluation	116	114	90	93
	Case Management	80	88	49	36
	Consultation	95	112	86	101
	Family Therapy	15	27	10	11
	Group Therapy	155	134	134	109
	Individual Therapy	367	375	322	271
	Interpretive Services	0	1	2	1
	ISA - AE	0	0	0	0
	ISA - Day Treatment	340	348	375	359
	ISA - Residential	391	466	422	360
	Medication Management	50	52	31	26
	Outpatient Therapy	0	0	0	0
	Respite Care	316	348	350	342
	Skills Training	228	236	241	228
Supportive Day Program	3	3	0	1	

FIGURE 8: TOTAL ALL QUARTERS: UNIQUE ENCOUNTERS BY DIAGNOSTIC GROUPS



¹ Unique Served: All duplicate records are removed.

² Encounters: A contact or admission for covered services to OHP Member.

³ Fee-For-Service (FFS): Eligible for OHP and NOT enrolled with an MHO (Open Card)

Data Source: DSSURS – Data Pulled: 12/8/05

C:\MHO Utilization Databases\Quarterly Pulls\Contract 1004-1205\1004-0905\1004-0905 Qtr Report.doc

**TABLE 12: UNIQUE¹ ENCOUNTERS² BY MHO/DIAGNOSTIC GROUPS
(ABHA & CLACKAMAS)**

MHO Contractors	Diagnostic Group	2004	2005		
		4 th Qtr	1 st Qtr	2 nd Qtr	3 rd Qtr
ABHA	ADHD	158	153	147	106
	Adjustment Disorders	359	377	419	293
	Alcohol/Drug	12	4	5	8
	Anxiety Disorders Other than PTSD	184	117	138	107
	Behavior Disorders	47	46	41	35
	Borderline Personality Disorder	7	6	9	8
	Delirium, Dementia, Cognitive Disorders	19	13	17	16
	Diagnosis Deferred	131	92	62	32
	Disorders of Infancy, Childhood, Adolescence NES	8	8	9	6
	Dissociative Disorders	6	4	4	2
	Eating Disorders	5	7	5	4
	Major Depressive Disorders	254	202	183	151
	Mania/Bipolar Disorders	195	123	115	98
	Mood Disorders	178	159	159	142
	Other MH Disorders	12	6	8	8
	Personality Disorders	12	1	1	0
	Pervasive Developmental Disorders	13	15	11	11
	PTSD	240	196	211	152
Schizophrenia, Other Psychotic Disorders	235	163	158	153	
Clackamas	ADHD	144	166	167	154
	Adjustment Disorders	304	343	354	305
	Alcohol/Drug	62	67	63	44
	Anxiety Disorders Other than PTSD	99	127	129	123
	Behavior Disorders	80	72	69	54
	Borderline Personality Disorder	12	9	8	10
	Delirium, Dementia, Cognitive Disorders	15	14	20	15
	Diagnosis Deferred	6	8	12	4
	Disorders of Infancy, Childhood, Adolescence NES	11	7	10	8
	Dissociative Disorders	0	0	1	2
	Eating Disorders	5	4	4	3
	Major Depressive Disorders	186	201	206	199
	Mania/Bipolar Disorders	132	123	127	124
	Mood Disorders	172	181	199	2
	Other MH Disorders	26	40	32	174
	Personality Disorders	0	0	0	0
	Pervasive Developmental Disorders	24	25	25	26
	PTSD	120	140	131	121
Schizophrenia, Other Psychotic Disorders	349	346	366	345	

¹ Unique Served: All duplicate records are removed.² Encounters: A contact or admission for covered services to OHP Member.

**TABLE 12: UNIQUE¹ ENCOUNTERS² BY DIAGNOSTIC GROUPS
(FAMILYCARE & GOBHI) (Continued)**

MHO Contractors	Diagnostic Group	2004	2005		
		4 th Qtr	1 st Qtr	2 nd Qtr	3 rd Qtr
FamilyCare	ADHD	53	69	72	56
	Adjustment Disorders	102	89	128	124
	Alcohol/Drug	29	43	40	46
	Anxiety Disorders Other than PTSD	61	59	66	54
	Behavior Disorders	40	41	34	25
	Borderline Personality Disorder	2	1	0	2
	Delirium, Dementia, Cognitive Disorders	0	1	2	2
	Diagnosis Deferred	2	3	4	1
	Disorders of Infancy, Childhood, Adolescence NES	10	9	4	2
	Dissociative Disorders	0	0	1	1
	Eating Disorders	2	3	2	2
	Major Depressive Disorders	121	134	136	134
	Mania/Bipolar Disorders	70	66	70	66
	Mood Disorders	68	74	77	70
	Other MH Disorders	4	12	17	9
	Personality Disorders	0	0	1	1
	Pervasive Developmental Disorders	4	4	5	5
	PTSD	73	80	77	86
Schizophrenia, Other Psychotic Disorders	99	93	81	78	
GOBHI	ADHD	252	268	267	239
	Adjustment Disorders	280	324	331	261
	Alcohol/Drug	39	45	40	49
	Anxiety Disorders Other than PTSD	150	152	161	147
	Behavior Disorders	103	107	109	107
	Borderline Personality Disorder	9	5	9	7
	Delirium, Dementia, Cognitive Disorders	16	19	16	25
	Diagnosis Deferred	136	137	275	162
	Disorders of Infancy, Childhood, Adolescence NES	43	38	36	27
	Dissociative Disorders	3	4	3	4
	Eating Disorders	2	2	1	1
	Major Depressive Disorders	231	209	261	221
	Mania/Bipolar Disorders	224	222	220	211
	Other MH Disorders	259	269	277	257
	Other Mood Disorders	126	127	126	178
	Personality Disorders	10	3	3	1
	Pervasive Developmental Disorders	25	24	18	26
	PTSD	215	227	266	211
Schizophrenia, Other Psychotic Disorders	352	351	353	303	

¹ Unique Served: All duplicate records are removed.

² Encounters: A contact or admission for covered services to OHP Member.

Data Source: DSSURS – Data Pulled: 12/8/05

C:\MHO Utilization Databases\Quarterly Pulls\Contract 1004-1205\1004-0905\1004-0905 Qtr Report.doc

**TABLE 12: UNIQUE¹ ENCOUNTERS² BY DIAGNOSTIC GROUPS
(JBH & LANE CARE) (Continued)**

MHO Contractors	Diagnostic Group	2004	2005		
		4 th Qtr	1 st Qtr	2 nd Qtr	3 rd Qtr
JBH	ADHD	260	296	289	174
	Adjustment Disorders	680	767	772	513
	Alcohol/Drug	28	36	35	27
	Anxiety Disorders Other than PTSD	263	299	285	199
	Behavior Disorders	163	212	215	147
	Borderline Personality Disorder	29	37	26	22
	Delirium, Dementia, Cognitive Disorders	25	34	33	31
	Diagnosis Deferred	28	28	25	18
	Disorders of Infancy, Childhood, Adolescence NES	21	29	27	22
	Dissociative Disorders	7	8	9	5
	Eating Disorders	9	8	5	3
	Major Depressive Disorders	465	497	484	268
	Mania/Bipolar Disorders	513	544	555	394
	Mood Disorders	453	453	473	279
	Other MH Disorders	233	244	122	97
	Personality Disorders	3	6	3	2
	Pervasive Developmental Disorders	58	52	58	43
	PTSD	410	432	423	300
Schizophrenia, Other Psychotic Disorders	848	862	837	621	
LaneCare	ADHD	221	252	257	221
	Adjustment Disorders	780	839	834	742
	Alcohol/Drug	6	6	3	0
	Anxiety Disorders Other than PTSD	248	244	286	281
	Behavior Disorders	203	202	186	154
	Borderline Personality Disorder	4	2	3	3
	Delirium, Dementia, Cognitive Disorders	2	5	4	3
	Diagnosis Deferred	0	0	0	0
	Disorders of Infancy, Childhood, Adolescence NES	31	37	44	38
	Dissociative Disorders	7	7	7	6
	Eating Disorders	2	2	2	1
	Major Depressive Disorders	466	500	497	470
	Mania/Bipolar Disorders	305	297	315	304
	Mood Disorders	313	333	323	315
	Other MH Disorders	271	282	202	7
	Personality Disorders	1	1	0	0
	Pervasive Developmental Disorders	46	50	49	44
	PTSD	545	575	537	483
Schizophrenia, Other Psychotic Disorders	520	517	525	488	

¹ Unique Served: All duplicate records are removed.² Encounters: A contact or admission for covered services to OHP Member.

**TABLE 12: UNIQUE¹ ENCOUNTERS² BY MHO/DIAGNOSTIC GROUPS
(MVBCN & VERITY) (Continued)**

MHO Contractors	Diagnostic Group	2004	2005		
		4 th Qtr	1 st Qtr	2 nd Qtr	3 rd Qtr
MVBCN	ADHD	397	420	444	300
	Adjustment Disorders	1,189	1,344	1,355	907
	Alcohol/Drug	13	11	4	4
	Anxiety Disorders Other than PTSD	312	293	294	213
	Behavior Disorders	201	205	207	119
	Borderline Personality Disorder	44	53	50	40
	Delirium, Dementia, Cognitive Disorders	86	78	85	21
	Diagnosis Deferred	0	0	0	1
	Disorders of Infancy, Childhood, Adolescence NES	45	47	44	24
	Dissociative Disorders	18	17	16	15
	Eating Disorders	13	11	11	4
	Major Depressive Disorders	880	902	876	640
	Mania/Bipolar Disorders	447	477	471	356
	Mood Disorders	402	398	371	228
	Other MH Disorders	115	151	146	35
	Personality Disorders	1	1	0	0
	Pervasive Developmental Disorders	100	122	116	69
	PTSD	589	653	663	449
Schizophrenia, Other Psychotic Disorders	910	913	885	619	
Verity	ADHD	510	526	535	411
	Adjustment Disorders	1,011	1,105	1,139	865
	Alcohol/Drug	83	79	78	63
	Anxiety Disorders Other than PTSD	356	379	371	306
	Behavior Disorders	240	266	293	198
	Borderline Personality Disorder	11	11	10	9
	Delirium, Dementia, Cognitive Disorders	51	39	35	38
	Diagnosis Deferred	53	75	61	18
	Disorders of Infancy, Childhood, Adolescence NES	86	95	82	70
	Dissociative Disorders	9	6	4	6
	Eating Disorders	11	9	5	4
	Major Depressive Disorders	1,108	1,102	1,053	891
	Mania/Bipolar Disorders	557	523	508	434
	Mood Disorders	584	588	563	440
	Other MH Disorders	112	95	135	88
	Personality Disorders	8	8	9	8
	Pervasive Developmental Disorders	96	96	87	80
	PTSD	740	770	811	677
Schizophrenia, Other Psychotic Disorders	1,460	1,426	1,373	1,240	

¹ Unique Served: All duplicate records are removed.² Encounters: A contact or admission for covered services to OHP Member.

**TABLE 12: UNIQUE¹ ENCOUNTERS² BY MHO/DIAGNOSTIC GROUPS
(WASHINGTON & TOTAL) (Continued)**

MHO Contractors	Diagnostic Group	2004	2005		
		4 th Qtr	1 st Qtr	2 nd Qtr	3 rd Qtr
Washington	ADHD	104	82	68	61
	Adjustment Disorders	131	162	157	131
	Alcohol/Drug	81	93	85	0
	Anxiety Disorders Other than PTSD	47	44	52	75
	Behavior Disorders	1	0	0	51
	Borderline Personality Disorder	9	8	8	0
	Delirium, Dementia, Cognitive Disorders	0	0	0	0
	Diagnosis Deferred	0	0	0	8
	Disorders of Infancy, Childhood, Adolescence NES	12	9	10	9
	Dissociative Disorders	0	0	0	0
	Eating Disorders	0	2	1	3
	Major Depressive Disorders	248	228	213	203
	Mania/Bipolar Disorders	142	146	144	129
	Mood Disorders	3	2	1	3
	Other MH Disorders	0	0	0	0
	Personality Disorders	76	73	73	69
	Pervasive Developmental Disorders	0	1	0	0
	PTSD	12	14	14	11
Schizophrenia, Other Psychotic Disorders	150	149	137	135	
Total Encounters	ADHD	2,099	2,232	2,246	1,722
	Adjustment Disorders	4,836	5,350	5,489	4,141
	Alcohol/Drug	353	384	353	241
	Anxiety Disorders Other than PTSD	1,720	1,670	1,782	1,505
	Behavior Disorders	1,078	1,159	1,162	890
	Borderline Personality Disorder	127	124	115	101
	Delirium, Dementia, Cognitive Disorders	214	203	212	159
	Diagnosis Deferred	356	352	449	245
	Disorders of Infancy, Childhood, Adolescence NES	267	270	256	197
	Dissociative Disorders	50	48	46	44
	Eating Disorders	49	274	248	225
	Major Depressive Disorders	3,959	3,893	3,840	3,103
	Mania/Bipolar Disorders	2,585	2,377	2,382	1,990
	Mood Disorders	2,432	2,455	2,442	1,733
	Other MH Disorders	899	1,030	861	665
	Personality Disorders	135	46	42	38
	Pervasive Developmental Disorders	462	517	489	410
	PTSD	3,173	3,428	3,491	2,838
Schizophrenia, Other Psychotic Disorders	4,627	6,626	6,530	5,280	

¹ Unique Served: All duplicate records are removed.

² Encounters: A contact or admission for covered services to OHP Member.

Data Source: DSSURS – Data Pulled: 12/8/05

C:\MHO Utilization Databases\Quarterly Pulls\Contract 1004-1205\1004-0905\1004-0905 Qtr Report.doc

**TABLE 12: UNIQUE¹ ENCOUNTERS² BY MHO/DIAGNOSTIC GROUPS
(FEE-FOR-SERVICE³) (Continued)**

MHO Contractors	Diagnostic Group	2004	2005		
		4 th Qtr	1 st Qtr	2 nd Qtr	3 rd Qtr
FFS	ADHD	104	113	125	98
	Adjustment Disorders	85	82	58	58
	Alcohol/Drug	77	58	41	37
	Anxiety Disorders Other than PTSD	40	37	37	20
	Behavior Disorders	84	88	75	73
	Borderline Personality Disorder	4	4	5	5
	Delirium, Dementia, Cognitive Disorders	6	13	10	7
	Diagnosis Deferred	0	0	0	0
	Disorders of Infancy, Childhood, Adolescence NES	27	27	24	28
	Dissociative Disorders	1	2	1	0
	Eating Disorders	0	0	0	0
	Major Depressive Disorders	70	77	54	48
	Mania/Bipolar Disorders	97	93	92	87
	Mood Disorders	43	17	8	16
	Other MH Disorders	52	63	50	66
	Personality Disorders	0	0	0	0
	Pervasive Developmental Disorders	15	16	12	12
	PTSD	131	125	118	107
Schizophrenia, Other Psychotic Disorders	387	429	417	395	

¹ Unique Served: All duplicate records are removed.

² Encounters: A contact or admission for covered services to OHP Member.

³ Fee-For-Service (FFS): Eligible for OHP and NOT enrolled with an MHO (Open Card)

Data Source: DSSURS – Data Pulled: 12/8/05

C:\MHO Utilization Databases\Quarterly Pulls\Contract 1004-1205\1004-0905\1004-0905 Qtr Report.doc

Hospital Data

TABLE 13: UNIQUE¹ HOSPITAL ADMISSIONS PER 1,000 MEMBERS² ENROLLED

MHO Contractors	2004	2005		
	4 th Qtr	1 st Qtr	2 nd Qtr	3 rd Qtr
ABHA	1.57	1.32	1.25	0.52
Clackamas	1.85	2.10	2.25	1.37
FamilyCare	2.03	2.58	1.33	1.35
GOBHI	0.38	0.58	0.54	0.19
JBH	2.75	2.34	2.71	0.84
LaneCare	2.56	2.96	2.57	1.58
MVBCN	0.84	1.01	0.85	0.26
Verity	3.15	3.18	3.19	2.88
Washington	2.70	2.72	2.30	1.88
Totals	2.08	2.12	2.04	1.27

(n=Total Admissions/d=Unique Enrolled per 1,000 members)

TABLE 14: UNIQUE HOSPITAL ADMISSIONS BY AGE GROUPS PER 1,000 MEMBERS

MHO Contractors	Age Group	2004	2005		
		4 th Qtr	1 st Qtr	2 nd Qtr	3 rd Qtr
ABHA	0-17	0.48	0.47	0.33	0.33
	18-64	3.09	2.71	2.80	0.90
	65+	0.57	0.00	0.00	0.00
Clackamas	0-17	0.55	0.47	0.60	0.20
	18-64	3.90	5.09	5.12	3.65
	65+	1.01	0.00	1.52	0.00
FamilyCare	0-17	0.60	0.90	0.60	0.45
	18-64	3.63	4.80	2.38	2.69
	65+	0.00	0.00	0.00	0.00
GOBHI	0-17	0.06	0.23	0.17	0.05
	18-64	0.88	1.21	1.22	0.45
	65+	0.00	0.00	0.00	0.00
JBH	0-17	0.97	0.97	1.12	0.20
	18-64	4.96	4.33	5.12	1.79
	65+	1.31	0.22	0.22	0.23
LaneCare	0-17	0.22	0.28	0.27	0.16
	18-64	5.06	6.12	5.32	3.41
	65+	2.58	2.08	2.66	1.05

(n=Total Admissions/d=Unique Enrolled per 1,000 members)

¹ Unique: All duplicated records are removed.² Per 1,000 members is the unique number enrolled divided by 1,000

TABLE 14: UNIQUE¹ HOSPITAL ADMISSIONS BY AGE GROUPS PER 1,000 MEMBERS² (continued)

MHO Contractors	Age Group	2004	2005		
		4 th Qtr	1 st Qtr	2 nd Qtr	3 rd Qtr
MVBCN	0-17	0.19	0.17	0.16	0.07
	18-64	1.83	2.31	1.92	0.61
	65+	0.69	1.40	1.41	0.23
Verity	0-17	0.75	1.01	0.82	0.94
	18-64	6.26	6.30	6.90	6.04
	65+	1.42	1.28	0.48	0.49
Washington	0-17	0.91	1.18	0.80	0.75
	18-64	6.13	6.03	5.44	4.76
	65+	1.28	1.27	2.09	0.40
Total	0-17	0.55	0.64	0.57	0.36
	18-64	4.20	4.40	4.40	2.82
	65+	1.12	0.86	0.90	0.31

(n=Total Admissions/d=Unique Enrolled per 1,000 members)

TABLE 15: AVERAGE HOSPITAL DAYS OF SERVICE

MHO Contractors	2004	2005		
	4 th Qtr	1 st Qtr	2 nd Qtr	3 rd Qtr
ABHA	6.56	8.74	6.71	6.50
Clackamas	7.54	9.20	8.80	11.81
FamilyCare	7.04	6.33	10.43	6.47
GOBHI	6.92	5.53	5.29	4.86
JBH	6.67	8.92	6.76	5.87
LaneCare	8.08	11.07	9.27	10.47
MVBCN	11.18	10.69	12.18	11.92
Verity	6.83	11.57	11.28	10.11
Washington	6.51	8.24	9.16	8.91
Total	7.26	9.90	9.30	9.41

(n=Sum Days of Service/d=Total Discharges)

¹ Unique: All duplicated records are removed² Per 1,000 members is the unique number enrolled divided by 1,000

TABLE 16: AVERAGE HOSPITAL DAYS BY MHO/AGE GROUP

MHO Contractors	Age Groups	2004	2005		
		4 th Qtr	1 st Qtr	2 nd Qtr	3 rd Qtr
ABHA	0-17	4.00	9.29	6.80	3.80
	18-64	6.86	8.59	6.70	7.73
	65+	14.00	0.00	0.00	0.00
Clackamas	0-17	8.86	7.88	8.63	10.25
	18-64	7.22	9.43	8.58	11.97
	65+	9.00	0.00	12.67	0.00
FamilyCare	0-17	16.33	9.83	4.33	8.00
	18-64	5.77	5.56	12.09	5.93
	65+	0.00	0.00	0.00	0.00
GOBHI	0-17	15.00	9.75	11.00	7.50
	18-64	6.18	4.23	4.53	3.80
	65+	0.00	0.00	0.00	0.00
JBH	0-17	8.00	9.19	9.21	7.89
	18-64	6.04	8.74	6.12	5.58
	65+	14.33	22.00	0.00	4.50
LaneCare	0-17	3.75	9.25	12.80	8.25
	18-64	7.74	10.46	8.60	9.95
	65+	16.80	32.67	23.33	18.20
MVBCN	0-17	10.43	12.33	10.43	13.60
	18-64	11.45	10.17	11.89	11.65
	65+	0.00	13.57	15.86	9.00
Verity	0-17	7.85	7.24	8.06	7.83
	18-64	6.33	12.05	11.69	10.30
	65+	14.75	21.14	17.75	22.00
Washington	0-17	9.56	10.00	9.06	8.18
	18-64	5.60	7.13	9.00	8.63
	65+	7.50	16.00	11.40	35.00
Totals	0-17	8.32	8.89	8.85	8.14
	18-64	6.82	9.78	9.16	9.41
	65+	13.56	19.41	15.77	17.85

(n=Sum Days of Service/d=Total Discharges)

TABLE 17: PERCENT OF HOSPITAL RE-ADMISSION WITHIN 30 DAYS

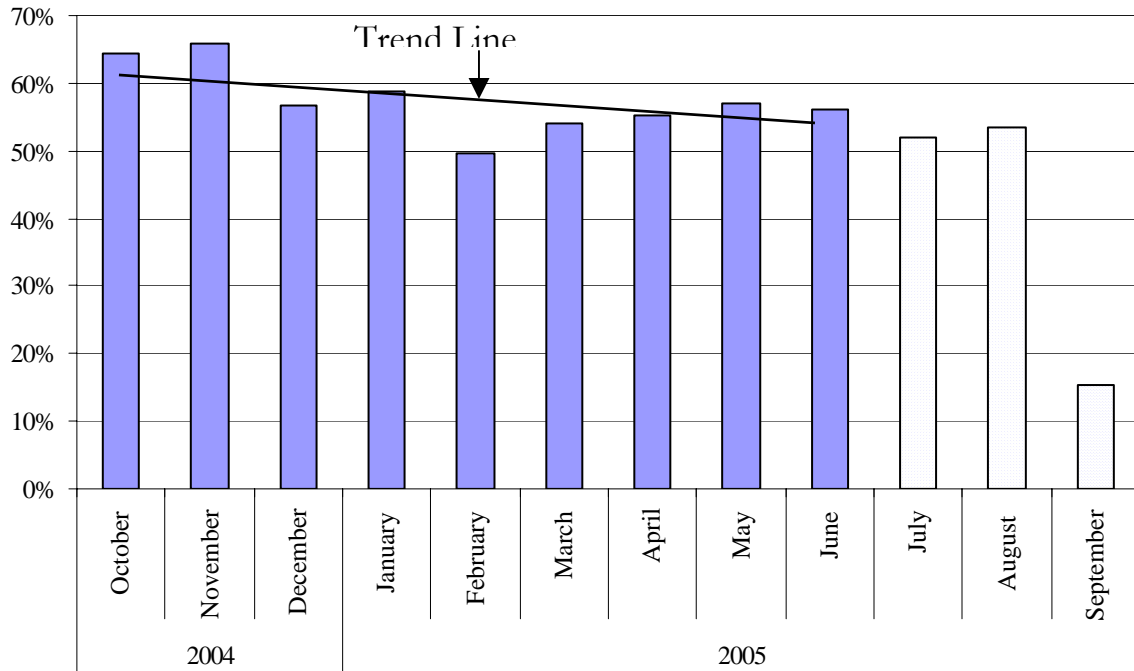
MHO Contractors	2004	2005		
	4 th Qtr	1 st Qtr	2 nd Qtr	3 rd Qtr
ABHA	11.6%	11.8%	8.6%	6.3%
Clackamas	4.3%	18.2%	26.8%	16.7%
FamilyCare	4.0%	3.0%	0.0%	0.0%
GOBHI	8.3%	17.6%	17.6%	0.0%
JBH	11.2%	14.3%	11.3%	19.0%
LaneCare	8.0%	21.8%	14.3%	12.1%
MVBCN	10.9%	7.0%	5.0%	3.8%
Verity	9.9%	13.8%	18.0%	10.0%
Washington	12.0%	17.6%	7.6%	6.0%
Total	9.9%	14.6%	13.8%	10.5%

TABLE 18: TOTAL HOSPITAL RE-ADMISSION WITHIN 180 DAYS

	2004	2005	
	4 th Qtr	1 st Qtr	2 nd Qtr
ABHA	11.6%	17.6%	22.9%
Clackamas	4.3%	30.9%	48.2%
FamilyCare	8.0%	15.2%	21.4%
GOBHI	8.3%	29.4%	35.3%
JBH	15.7%	27.9%	27.4%
LaneCare	10.3%	36.6%	33.7%
MVBCN	14.5%	15.5%	16.7%
Verity	12.7%	25.9%	35.7%
Washington	13.3%	29.7%	26.6%
Total	12.6%	26.8%	31.2%

This table does not include the 3rd Qtr of 2005 in this report due to the 180-day lag in data submission.

FIGURE 9: TOTAL SEEN BY OUTPATIENT WITHIN 7 DAYS OF HOSPITAL DISCHARGE
(n=number seen within 7 days/d= hospital discharges.)



There is a 180-lag in data encounter submission. The trend line reflects this lag.

TABLE 19: SEEN BY OUTPATIENT WITHIN 7 DAYS OF HOSPITAL DISCHARGE

MHO Contractors	2004	2005		
	4 th Qtr	1 st Qtr	2 nd Qtr	3 rd Qtr
ABHA	67.4%	58.8%	57.1%	50.0%
Clackamas	47.8%	50.9%	71.4%	57.1%
FamilyCare	40.0%	21.2%	64.3%	31.6%
GOBHI	50.0%	76.5%	35.3%	14.3%
JBH	61.8%	50.0%	48.4%	33.3%
LaneCare	64.4%	63.4%	57.1%	51.5%
MVBCN	65.5%	60.6%	63.3%	34.6%
Verity	74.5%	59.0%	63.9%	43.4%
Washington	41.0%	40.7%	34.2%	40.3%
Total	62.2%	54.1%	56.0%	42.9%

(n=Seen Within 7 days/d=Hospital Discharges)

MHO UTILIZATION REPORT GLOSSARY

DIAGNOSIS CATEGORY:

Diagnosis categories are defined by the grouping of diagnoses in the most recent version of the American Psychiatric Association's Diagnostic and Statistical Manual (DSM).

ELIGIBLE:

An individual eligible for services under the OHP, but may not be enrolled into an MHO. Includes enrolled and fee-for-service.

ENCOUNTER:

An outpatient contact or Acute Inpatient Hospital Psychiatric Care admission for Covered Services provided to an OHP Member.

ENROLLED (ENROLLEE):

Eligible for the Oregon Health Plan (OHP) and enrolled in an MHO.

FEE-FOR-SERVICE (FFS):

Individuals who are eligible for the OHP, but are not enrolled with an MHO. This is also known as fee-for-service (FFS) or an "open card".

MENTAL HEALTH ORGANIZATION (MHO):

A Prepaid Health Plan under contract with DHS to provide Covered Services under the OHP Medicaid Demonstration Project and State Children's Health Insurance Program (SCHIP). MHOs can be FCHPs, CMHPs, or private MHOs or combinations thereof.

OFFICE OF MENTAL HEALTH AND ADDICTION SERVICES (OMHAS):

The program office of DHS responsible for the administration of mental health services for the State of Oregon.

OREGON HEALTH PLAN (OHP):

Oregon's health care reform effort consisting of a Medicaid Demonstration Project, State Children's Health Insurance Program, an individual insurance program for persons excluded from health insurance coverage due to pre-existing health conditions, and a group insurance program for small businesses. One objective of this reform effort includes universal coverage for Oregonians. In the context of this report, OHP refers to all individuals on FFS.

MHO UTILIZATION REPORT GLOSSARY *(Continued)*

PERCENT ENROLLEES SERVED:

This is a general measure of access, but more related to utilization of services. It is a percentage calculated by summing the unique enrollees seen during a given time period and dividing that number by the total enrollees for that time period. For example, if there is 10,000 enrollees statewide in a given month and during that same month 500 of those enrollees receive services, the percent of enrollees served is 5%.

PERCENTAGE RATE:

Percent of enrollees served during a given time period.

SERVICE CATEGORY:

Service category is a descriptive grouping of service codes (BA, ECC, and CPT) that are similar procedurally.

UNIQUE SERVED:

Unduplicated number of individuals receiving mental health services.

UNIQUE ENCOUNTERS:

Unduplicated services received by an individual(s) within a specific time period. One individual may have had several services provided – each service would be part of the calculations.

DIAGNOSTIC CATEGORIES GLOSSARY WITH SPECIFIC DSMIV CODES

ADHD:

314.0; 314.00; 314.01; 314.1; 314.9

ADJUSTMENT DISORDERS:

309.00; 309.1; 309.2; 309.21; 309.23; 309.24; 309.28; 309.29; 309.3; 309.4; 309.40;
309.82; 309.83; 309.89; 309.9

ALCOHOL/DRUG:

291.3; 291.4; 291.5; 291.81; 291.89; 291.9; 292.0; 292.11; 292.12; 292.84; 292.9;
303.00; 303.01; 303.02; 303.90; 303.91; 303.93; 304.00; 304.01; 304.10; 304.20;
304.23; 304.23; 304.30; 304.31; 304.33; 304.40; 304.41; 304.42; 304.43; 304.70;
304.71; 304.80; 304.83; 304.90; 305.00; 305.02; 305.03; 305.20; 305.21; 305.22;
305.40; 305.50; 305.60; 305.61; 305.70; 305.71

ANXIETY DISORDER OTHER THAN PTSD:

293.84; 300.00; 300.01; 300.02; 300.09; 300.10; 300.20; 300.21; 300.22; 300.23;
300.29; 300.3; 308.3

BEHAVIOR DISORDERS:

312.00; 312.01; 312.02; 312.30; 312.31; 312.32; 312.34; 312.39; 312.4; 312.8; 312.81;
312.82; 312.89; 312.9; 313.69; 313.81

BORDERLINE PERSONALITY DISORDERS:

301.83

DELIRIUM, DEMENTIA, COGNITIVE DISORDERS:

290.0; 290.10; 290.11; 290.12; 290.13; 290.20; 290.21; 290.3; 290.40; 290.42; 290.43;
291.0; 291.2; 292.82; 292.83; 292.89; 293.0; 294.0; 294.1; 294.10; 294.11; 294.8;
294.9; 294.90; 310.1; 310.10; 310.9

DIAGNOSIS DEFERRED:

799.9

DISORDERS OF INFANCY, CHILDHOOD, ADOLESCENCE NES:

299.10; 307.0; 307.20; 307.23; 307.3; 307.6; 307.7; 307.9; 313.23; 313.82; 313.89;
313.9; 315.00; 315.31; 315.32; 315.39; 315.4; 315.9; 317.0; 318.0; 318.81; 319.0; 787.6

DIAGNOSTIC CATEGORIES GLOSSARY
WITH SPECIFIC DSM-IV CODES
(Continued)

DISSOCIATIVE DISORDERS:

300.12; 300.13; 300.14; 300.15; 300.6

EATING DISORDERS:

307.1; 307.50; 307.51; 307.52; 307.53; 307.59; 780.59

MAJOR DEPRESSIVE DISORDERS:

296.2; 296.20; 296.21; 296.22; 296.23; 296.24; 296.25; 296.26; 296.3; 296.30; 296.31;
296.32; 296.33; 296.34; 296.35; 296.36

MANIA/BIPOLAR DISORDERS:

296; 296.0; 296.00; 296.01; 296.02; 296.03; 296.04; 296.05; 296.06; 296.09; 296.10;
296.12; 296.13; 296.15; 296.4; 296.40; 296.41; 296.42; 296.43; 296.44; 296.45; 296.46;
296.50; 296.51; 296.52; 296.53; 296.54; 296.55; 296.56; 296.6; 296.60; 296.61; 296.62;
296.63; 296.64; 296.65; 296.66; 296.7; 296.70; 296.8; 296.80; 296.81; 296.82; 296.89;
296.9

MOOD DISORDERS WITHOUT BEHAVIOR, MANIA AND BIPOLAR:

293.83; 296.09; 296.82; 296.90; 296.99; 300.4; 300.40; 301.13; 309.1; 311; 311.0;
311.00

OTHER MENTAL HEALTH (MH) DISORDERS:

293.89; 293.9; 300.11; 300.16; 300.19; 300.7; 300.81; 300.82; 300.9; 302.1; 302.2;
302.4; 302.70; 302.73; 302.9; 306.3; 307.42; 307.44; 307.45; 307.46; 307.47; 307.80;
307.89; 307.9; 308.0; 308.1; 316; 995.2; 995.50; 995.52; 995.53; 995.54; 995.59;
995.81; V611.0; V612.0; V612.1; V618; V619; V628.1; V628.2; V628.9; V629;
V654.0; V710.1; V710.2; V710.9

PERSONALITY DISORDERS:

301.0; 301.12; 301.20; 301.22; 301.3; 301.4; 301.50; 301.6; 301.7; 301.81; 301.82;
301.89; 301.9

DIAGNOSTIC CATEGORIES GLOSSARY
WITH SPECIFIC DSMIV CODES
(Continued)

PERVASIVE DEVELOPMENTAL DISORDERS:

299.0; 299.00; 299.80; 299.81; 299.90

POST-TRAUMATIC STRESS DISORDER (PTSD):

309.81

SCHIZOPHRENIA, OTHER PSYCHOTIC DISORDERS:

293.81; 293.82; 295.0; 295.00; 295.01; 295.02; 295.03; 295.10; 295.11; 295.12; 295.13;
295.14; 295.15; 295.20; 295.22; 295.23; 295.24; 295.3; 295.30; 295.31; 295.32; 295.33;
295.34; 295.35; 295.40; 295.42; 295.43; 295.44; 295.45; 295.50; 295.51; 295.52;
295.54; 295.55; 295.60; 295.61; 295.62; 295.64; 295.65; 295.7; 295.70; 295.71; 295.72;
295.73; 295.74; 295.75; 295.80; 295.82; 295.83; 295.84; 295.85; 295.9; 294.90; 295.91;
295.92; 295.93; 295.94; 295.95; 297.0; 297.1; 297.3; 297.9; 298.0; 298.3; 298.8; 298.9;
299.01

SERVICE CATEGORIES GLOSSARY WITH SPECIFIC PROCEDURES CODES

ALTERNATIVES TO INPATIENT HOSPITALIZATION:

H0035; H2013

ASSERTIVE COMMUNITY TREATMENT:

H0039

ASSESSMENT & EVALUATION:

90801; 90802; 96100; 99090; 99214; 99222; 99223; 99231; 99232; 99233; 99238;
99239; BA008; BA010; BA011; H0002; H0031; T1023

CASE MANAGEMENT:

99371; BA046; BA047; BA147; T1016

CONSULTATION:

90882; 90887; 99255; BA017

CRISIS INTERVENTION:

S9484

FAMILY THERAPY:

90846; 90849; BA013; BA016

GROUP THERAPY:

90853; 90857; BA015; BA115

ISA - AE:

H0018

ISA - DAY TREATMENT:

ECC13; H0037; H2012

ISA - MST:

H2033

ISA - RESIDENTIAL:

ECC11; H0019

**SERVICE CATEGORIES GLOSSARY WITH
SPECIFIC PROCEDURES CODES**
(Continued)

INDIVIDUAL THERAPY:

90804; 90805; 90806; 90807; 90808; 90809; 90810; 90811; 90812; 90813; 90814;
90815; BA011; BA111; H0004

INTERPRETIVE SERVICES:

T1013

MEDICATION MANAGEMENT:

90862; BA019; BA026; BA126; H0034; H2010

OTHER OUTPATIENT THERAPY:

90847; 90899; ECC50; H2021; H2022

RESPITE CARE:

ECC20; H0045; S5151; S9125; T1005

ENROLLMENT NUMBERS PER MONTH

MHO Contractor	Oct-04	Nov-04	Dec-04	Jan-05	Feb-05	Mar-05	Apr-05	May-05	Jun-05	Jul-05	Aug-05	Sep-05
ABHA	19,708	19,622	19,420	19,374	19,332	19,063	19,142	19,175	19,054	19,033	18,669	18,641
Clackamas	18,025	17,907	17,914	17,914	18,046	17,717	17,782	17,818	18,141	18,022	18,028	18,001
FamilyCare	8,731	8,446	8,381	8,103	8,014	8,035	8,166	8,100	7,898	8,038	7,882	7,723
GOBHI	21,861	21,584	21,414	21,265	21,298	21,314	21,589	21,742	21,830	21,626	21,425	21,395
JBH	50,332	49,791	49,693	48,963	49,017	48,565	49,107	49,272	49,249	48,576	47,897	48,119
LaneCare	27,456	27,286	27,120	26,815	26,792	26,534	26,719	26,945	26,882	26,575	26,538	26,294
MVBCN	51,336	50,757	50,908	50,379	50,429	50,209	50,281	50,966	50,909	50,594	50,482	50,532
Verity	53,171	52,675	52,477	51,828	51,771	51,342	51,785	52,354	51,761	51,693	51,442	51,652
Washington	18,688	21,799	21,830	21,728	21,758	21,942	22,073	22,461	22,119	21,956	21,718	21,731
Monthly Totals	269,308	269,867	269,157	266,369	266,457	264,721	266,644	268,833	267,843	266,113	264,081	264,088

% Monthly Increase/Decrease	0.21%	-0.26%	-1.05%	0.03%	-0.66%	0.72%	0.81%	-0.37%	-0.65%	-0.77%	0.00%	-1.98%
												Overall

Eligibles	433,029	428,704	425,535	423,900	422,815	424,309	424,618	424,204	423,537	421,344	422,078	422,201
FFS	163,721	158,837	156,378	157,531	156,358	159,588	157,974	155,371	155,694	155,231	157,997	158,113

Note: Enrolled data for the above chart was pulled 4/11/06 due to program problems. The numbers will vary from what is reported in the previous pages of this report.

UNIQUE MEMBERS SERVED PER MONTH

MHO Contractors	Oct-04	Nov-04	Dec-04	Jan-05	Feb-05	Mar-05	Apr-05	May-05	Jun-05	Jul-05	Aug-05	Sep-05
ABHA	1,136	1,305	1,303	1,109	1,117	1,095	1,135	1,021	1,122	892	543	854
Clackamas	1,010	1,102	1,146	1,195	1,168	1,240	1,235	1,273	1,222	1,122	1,149	1,023
FamilyCare	451	430	461	456	411	495	478	499	453	426	456	422
GOBHI	1,370	1,459	1,369	1,498	1,520	1,425	1,533	1,593	1,525	1,200	1,355	1,177
JBH	2,489	2,876	2,881	3,085	3,061	3,263	2,789	2,766	3,144	2,308	1,834	1,226
LaneCare	2,577	2,696	2,690	2,813	2,729	2,873	2,808	2,806	2,736	2,452	2,553	2,333
MVBCN	3,445	3,775	3,904	3,969	3,848	4,134	4,048	3,929	3,821	2,934	2,198	1,499
Verity	4,889	4,932	4,913	5,002	4,778	5,095	4,913	4,938	4,917	4,514	4,528	685
Washington	780	899	853	860	858	896	764	860	706	732	668	479
Total	18,147	19,474	19,520	19,987	19,490	20,516	19,703	19,685	19,646	16,580	15,284	9,698
FFS	806	845	808	853	883	850	830	802	803	754	727	726