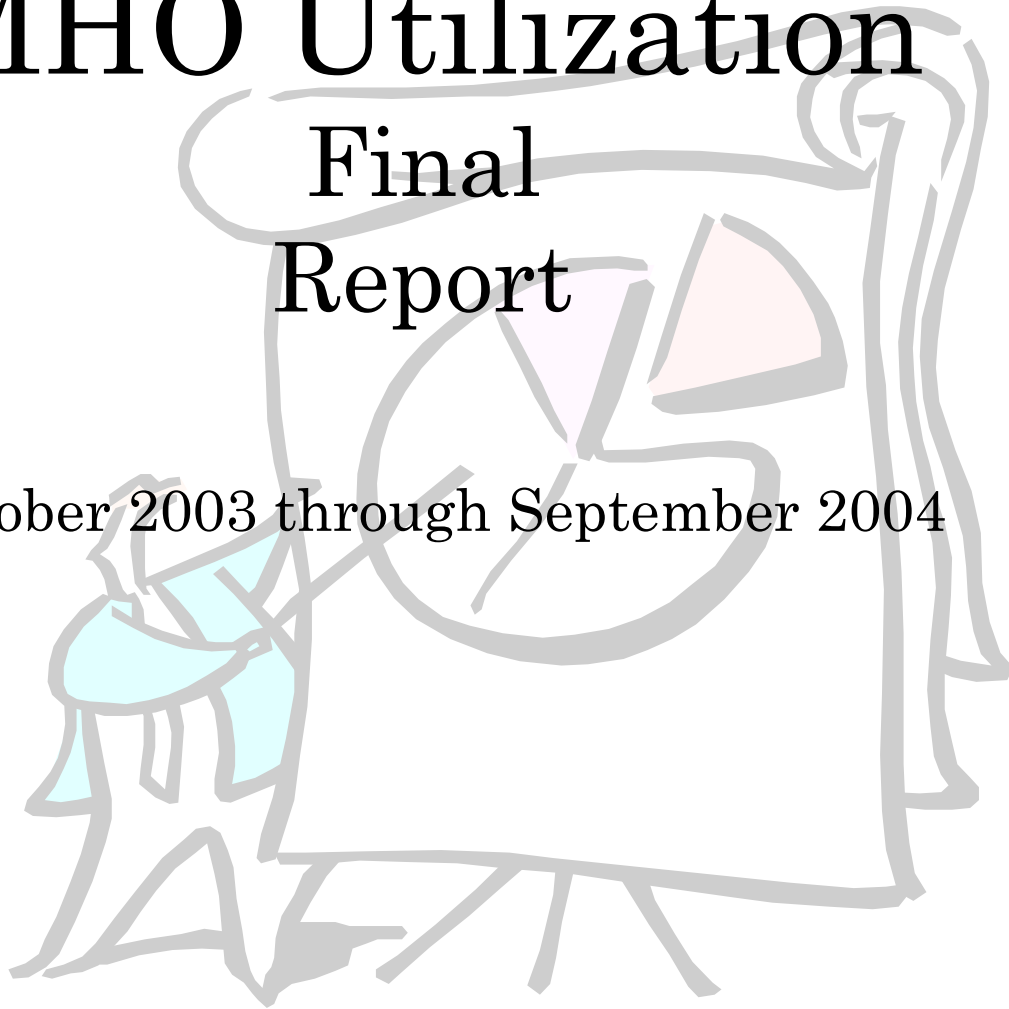


Department of Human Services
Office of Mental Health and Addiction Services

Annual MHO Utilization Final Report

October 2003 through September 2004



Report Produced by
Program Analysis and Evaluation Team
MAY 2005

EXECUTIVE SUMMARY
FINAL ANNUAL REPORT ON
UTILIZATION AND ENROLLMENT FOR
MENTAL HEALTH SERVICES:
OCTOBER 2003 – SEPTEMBER 2004

The following is a summary of the Mental Health Organization (MHO) Utilization Final Annual Report for the period of October 2003 through September 2004. This report contains enrollment, unique served, unique encounters and hospitalization data for the MHO contract year 2003-04. The data for this report were pulled April 15, 2005. All information came from the Office of Medical Assistance Programs' (OMAP) Decision Support/Surveillance and Utilization Review System (DSSURS).

Previous MHO Utilization Report calculations were based on the total number of records within a specific quarter and divided by three (3) for a monthly average per quarter. However, in this report calculations are based on the total number of unique members for each of the quarters. The diagnosis and service categories within the Unique Served and the Hospital data will be based on the number of unique encounters per quarter.

ENROLLMENT DATA

- ❖ Enrollments data based on the quarters for all MHO's show an 18.7% increase for the date period of this report. The largest increase occurred from the 2nd Quarter of 2004 to 3rd quarter 2004 report (16.1%), where the other quarters show a slight increase of 2.9% or less. The dramatic increase of growth in the 3rd quarter of 2003 is due to the OHP Standard population being added back in the enrollments in August 2004. For detail on monthly enrollment numbers by MHO's, please see page 32 of this report.
- ❖ Enrolled males in the 3rd quarter of 2004 increased by 16.7% while Enrolled females increased by 15.7%. While this is an insignificant difference between genders, the difference between youth verses adult reflects a larger difference. Enrolled adults in the 18-64 age group increased 37.9%; and 65+ age group increased only 2.2%; while enrolled children increased 5.9%.
- ❖ The ethnic populations show a steady increase in enrollment numbers. The increase in the 3rd quarter shows the largest increases in the Hispanic population of 8.5% and

White population of 9.6%. All other ethnic populations also show increases during this time period.

UNIQUE SERVED DATA

- ❖ The number of served shows an increase of 11.6%. Between the 2nd and 3rd quarter of 2004 an increase of 6.4% reflects the return of the OHP Standard population. For detail on monthly served numbers by MHO's, please see page 33 of this report.
- ❖ Unique Served data in the 18-64 age group reflects the return of the OHP Standard populations increasing from 3.41% in the 2nd quarter to 35.13% in the 3rd quarter. Over all we see increases across all age groups; 0-17 years 5.86%; 18-64 years 37.93%; and 65+ years 2.21%.
- ❖ The Unique Served ethnic populations within the timeline of this report show a lot of increase and decreases across the board. However, in the 3rd quarter of 2004, when the OHP Standard population was added back in, the African American population increased from 1.1% in the 1st quarter of 2004 to 7.8% in the 3rd quarter of 2004. Overall the Native Hawaiian or other Pacific Islander population had the most dramatic increase of 64.3%.

HOSPITAL DATA

- ❖ Total Unique Hospital Admissions during the timeline of this report show an increase of 1.2%. Within the age groups there is a slight increase of 2.2% among the 0-17 population, and a decrease of 23.3% (18-64) and 42.0% (65+).
- ❖ Total Unique Hospital Days (length of stay) during the timeline of this report show an overall increase of 18.3%. Within the age groups the 0-17 population increased 2.7% and the 18-64 population increased 5.9%. The 65+ population shows a dramatic decrease of 48%, which is due to Medicare.

TABLE OF CONTENTS

The format and contents are constructed as follows:

- Figures are used to illustrate trends in statewide data.
- Tables are used to summarize quarterly data at the MHO level. Some tables include FFS and All Eligibles.



Executive Summary i

Enrollment Data

Figure 1: Total Enrolled by MHO 1

Table 1: Enrolled by MHO 1

Table 2: Enrolled by Gender 2

Figure 2: Total Enrolled Children (0-17) And Adults (18+) 3

Table 3: Enrolled Children (0-17) and Adults (18+) by MHO:..... 3

Figure 3: Total Enrolled by Age Groups 4

Table 4: Enrolled by Age Groups by MHO 4

Figure 4: Total Enrolled by Ethnicity 6

Table 4: Enrolled by Ethnicity 6

Unique Served Data

Figure 4: Total Unique Served by MHO 10

Table 5: Unique Served by MHO with Penetration Rate 10

Table 6: Unique Served by Gender 11

Figure 5: Total Unique Served: Children (0-17) and Adults (18+) by MHO 12

Table 7: Unique Served: Children (0-17) and Adults (18+) by MHO 12

Table 8: Unique Served by Age Groups 13

Figure 6: Total Unique Served by Ethnicity 14

Table 9: Unique Served by Ethnicity 14

Figure 7: Total Unique Encounters by Service Categories18

Table 10: Unique Encounters by Service Categories - ABHA18

Clackamas & FamilyCare19

GOBHI & JBH20

LaneCare & MVBCN21

THA & Verity*22

Washington & Total Served23

Fee-For-Service24

Figure 8: Total Unique Encounters by Diagnostic Groups.....25

Table 11: Unique Encounters by Diagnostic Groups: ABHA25

Clackamas, FamilyCare & GOBHI.....26

JBH, LaneCare & MVBCN27

THA, Verity*, & Washington28

Total Served & FFS29

[Hospital Data](#)

Table 12: Unique Hospital Admissions per 1,000 Members.....30

Table 13: Unique Hospital Admissions by Age Groups per 1,000 Members30

Table 14: Unique Hospital Admissions by Age Groups per 1,000 Members31

Table 15: Total Unique Hospital Days31

Table 16: Total Unique Hospital Days by Age Group.....32

Table 17: Percent of Hospital Re-Admission within 30 days.....33

Table 18: Hospital Re-Admission within 180 days by MHO.....33

Figure 9: Total Enrolled Members Seen within 7 Days of Discharge34

Table 21: Enrolled Members Seen within 7 Days of Discharge: by MHO34

MHO Utilization Report Glossary30

Enrollment Numbers per Month by MHO32

Number Served per Month by MHO33



Enrollment Data

- ❖ Enrolled: Eligible for OHP and enrolled in an MHO
- ❖ Eligibles: Both Enrolled and FFS
- ❖ Fee-For-Service (FFS): Eligible for OHP and NOT enrolled with an MHO (Open Card)

FIGURE 1: TOTAL ENROLLED¹ BY MHO

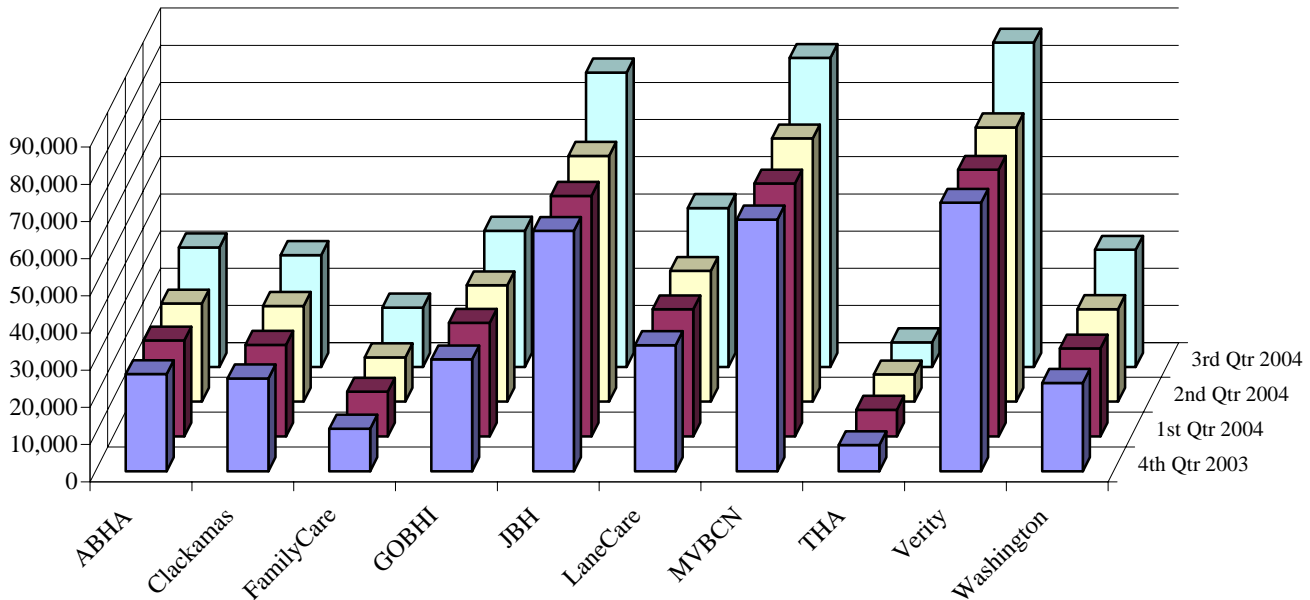


TABLE 1: ENROLLED BY QUARTER AND PERCENT OF ENROLLED

MHO Contractors	2003		2004					
	4th Qtr	% Enrolled	1st Qtr	% Enrolled	2nd Qtr	% Enrolled	3rd Qtr	% Enrolled
ABHA*	26,135	5.7%	25,788	5.6%	26,436	5.6%	32,184	6.8%
Clackamas	24,983	5.5%	24,651	5.4%	25,783	5.5%	30,100	6.3%
FamilyCare	11,484	2.5%	12,040	2.6%	11,943	2.5%	15,986	3.4%
GOBHI	30,103	6.6%	30,596	6.6%	31,338	6.6%	36,624	7.7%
JBH	64,675	14.2%	64,745	14.1%	66,151	14.0%	79,238	16.7%
LaneCare	33,912	7.4%	34,237	7.4%	35,184	7.5%	42,745	9.0%
MVBCN	67,744	14.9%	68,064	14.8%	70,823	15.0%	83,120	17.5%
THA	7,013	1.5%	7,174	1.6%	7,338	1.6%	6,633	1.4%
Verity**	72,227	15.9%	71,741	15.6%	73,768	15.6%	87,254	18.3%
Washington	23,747	5.2%	23,664	5.1%	24,941	5.3%	31,508	6.6%
Total Enrolled	362,023	79.5%	362,700	78.8%	373,705	79.2%	445,392	93.6%
All Eligibles ²	455,660	100.0%	460,195	100.0%	472,044	100.0%	475,641	100.0%
Fee-For-Service (FFS) ³	202,157	44.4%	204,403	44.4%	217,583	46.1%	204,452	43.0%

¹ Enrolled: Eligible for OHP and enrolled in an MHO

² Eligibles: Both Enrolled and FFS

³ Fee-For-Service (FFS): Eligible for OHP and NOT enrolled with an MHO (Open Card)

TABLE 2: ENROLLED¹ BY GENDER: QUARTER BY MHO

MHO Contractors	Gender	2003	2004		
		4th Qtr	1st Qtr	2nd Qtr	3rd Qtr
ABHA*	F	14,915	14,683	15,084	18,250
	M	11,220	11,105	11,352	13,934
Clackamas	F	14,121	13,978	14,535	17,077
	M	10,862	10,673	11,248	13,023
FamilyCare	F	6,552	6,893	6,788	8,663
	M	4,932	5,147	5,155	7,323
GOBHI	F	17,035	17,335	17,749	20,865
	M	13,068	13,261	13,589	15,759
JBH	F	36,661	36,682	37,468	44,990
	M	28,014	28,063	28,683	34,248
LaneCare	F	19,566	19,668	20,260	24,422
	M	14,346	14,569	14,924	18,323
MVBCN	F	38,265	38,422	39,978	46,654
	M	29,479	29,642	30,845	36,466
THA	F	3,973	4,050	4,130	3,701
	M	3,040	3,124	3,208	2,932
Verity**	F	40,199	39,956	41,308	48,242
	M	32,028	31,785	32,460	39,012
Washington	F	13,383	13,372	14,060	17,731
	M	10,364	10,292	10,881	13,777
Statewide Totals	F	204,670	205,039	211,360	250,595
	M	157,353	157,661	162,345	194,797
All Eligibles ²	F	258,830	261,311	267,761	270,450
	M	196,830	198,884	204,283	205,191
Fee-For-Service ³ (FFS)	F	127,670	128,878	136,736	129,317
	M	75,043	76,147	81,474	75,704

¹ Enrolled: Eligible for OHP and enrolled in an MHO

² Eligibles: Both Enrolled and FFS

³ Fee-For-Service (FFS): Eligible for OHP and NOT enrolled with an MHO (Open Card)

FIGURE 2: TOTAL ENROLLED¹ CHILDREN (0-17) AND ADULTS (18+)

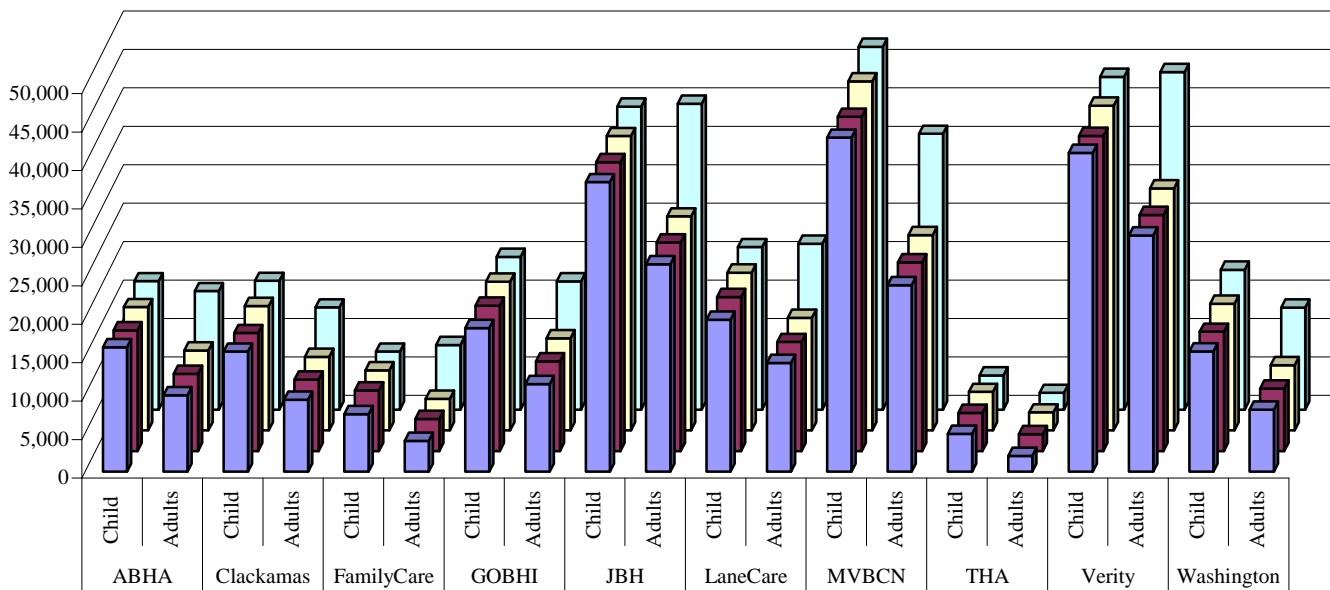


TABLE 3: ENROLLED CHILDREN (0-17) AND ADULTS (18+) BY MHO

MHO Contractors	Age Group	2003	2004			Percent by MHO Total
		4th Qtr	1st Qtr	2nd Qtr	3rd Qtr	
ABHA*	Children	16,203	15,729	16,045	16,737	58.5%
	Adults	9,932	10,059	10,391	15,447	41.5%
Clackamas	Children	15,631	15,363	16,202	16,780	60.6%
	Adults	9,352	9,288	9,581	13,320	39.4%
FamilyCare	Children	7,469	7,887	7,829	7,565	59.8%
	Adults	4,015	4,153	4,114	8,421	40.2%
GOBHI	Children	18,690	18,926	19,358	19,898	59.7%
	Adults	11,413	11,670	11,980	16,726	40.3%
JBH	Children	37,680	37,593	38,307	39,437	55.7%
	Adults	26,995	27,152	27,844	39,801	44.3%
LaneCare	Children	19,772	20,047	20,539	21,159	55.8%
	Adults	14,140	14,190	14,645	21,586	44.2%
MVBCN	Children	43,473	43,501	45,411	47,211	62.0%
	Adults	24,271	24,563	25,412	35,909	38.0%
THA	Children	4,942	4,955	5,001	4,447	68.7%
	Adults	2,071	2,219	2,337	2,186	31.3%
Verity**	Children	41,485	41,007	42,263	43,316	55.1%
	Adults	30,742	30,734	31,505	43,938	44.9%
Washington	Children	15,667	15,526	16,473	18,219	63.4%
	Adults	8,080	8,138	8,468	13,289	36.6%

¹ Enrolled: Eligible for OHP and enrolled in an MHO

FIGURE 3: TOTAL ENROLLED BY AGE GROUPS

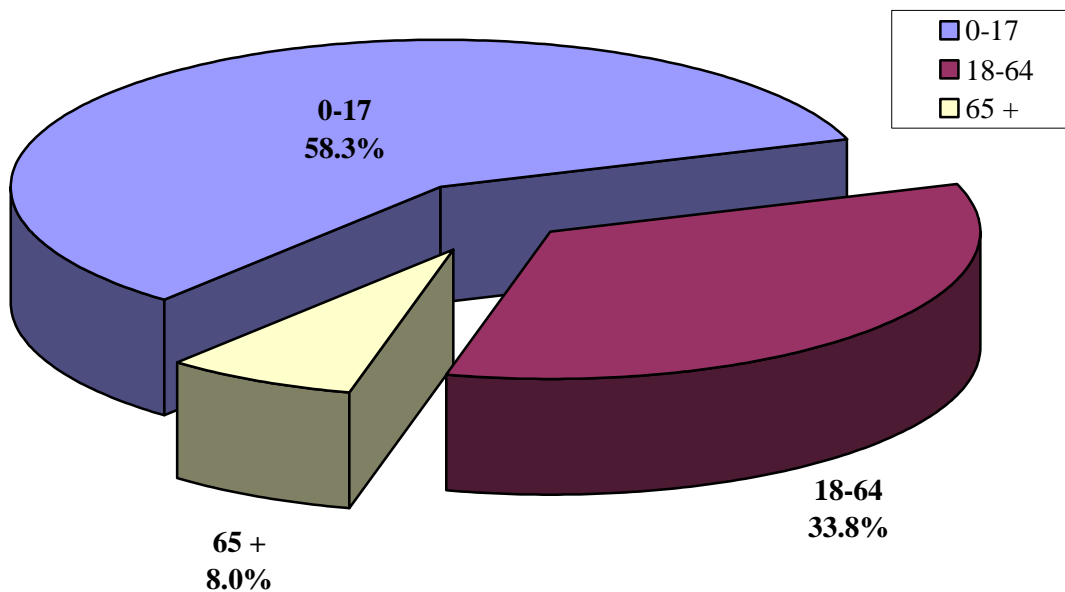


TABLE 4: Enrolled¹ by Age Groups: Quarterly Totals

MHO Contractors	Age Groups	2003	2004			Percent by MHO Total
		4th Qtr	1st Qtr	2nd Qtr	3rd Qtr	
ABHA*	0-17	16,203	15,729	16,045	16,737	58.5%
	18-64	8,043	8,178	8,484	13,486	34.5%
	65 +	1,889	1,881	1,907	1,961	6.9%
Clackamas	0-17	15,631	15,363	16,202	16,780	60.6%
	18-64	7,202	7,093	7,389	11,128	31.1%
	65 +	2,150	2,195	2,192	2,192	8.3%
FamilyCare	0-17	7,469	7,887	7,829	7,565	59.8%
	18-64	3,649	3,770	3,734	8,045	37.3%
	65 +	366	383	380	376	2.9%
GOBHI	0-17	18,690	18,926	19,358	19,898	59.7%
	18-64	9,009	9,234	9,506	14,159	32.6%
	65 +	2,404	2,436	2,474	2,567	7.7%
JBH	0-17	37,680	37,593	38,307	39,437	55.7%
	18-64	21,903	22,125	22,754	34,671	36.9%
	65 +	5,092	5,027	5,090	5,130	7.4%

¹ Enrolled: Eligible for OHP and enrolled in an MHO

TABLE 4: Enrolled¹ by Age Groups: Quarterly Totals (continued)

MHO Contractors	Age Groups	2003	2004			Percent by MHO Total
		4th Qtr	1st Qtr	2nd Qtr	3rd Qtr	
LaneCare	0-17	19,772	20,047	20,539	21,159	55.8%
	18-64	12,067	12,106	12,554	19,432	38.4%
	65 +	2,073	2,084	2,091	2,154	5.8%
MVBCN	0-17	43,473	43,501	45,411	47,211	62.0%
	18-64	19,443	19,808	20,664	31,083	31.4%
	65 +	4,828	4,755	4,748	4,826	6.6%
THA	0-17	4,942	4,955	5,001	4,447	68.7%
	18-64	1,670	1,828	1,913	1,745	25.4%
	65 +	401	391	424	441	5.9%
Verity**	0-17	41,485	41,007	42,263	43,316	55.1%
	18-64	23,835	23,706	24,559	36,954	35.8%
	65 +	6,907	7,028	6,946	6,984	9.1%
Washington	0-17	15,667	15,526	16,473	18,219	63.4%
	18-64	6,051	6,097	6,407	11,144	28.6%
	65 +	2,029	2,041	2,061	2,145	8.0%
Totals	0-17	221,012	220,534	227,428	234,769	
	18-64	112,872	113,945	117,964	181,847	
	65 +	28,139	28,221	28,313	28,776	

Note: All Eligibles and FFS data does not have accurate recipient date of birth and is not included in this specific data table.

¹ Enrolled: Eligible for OHP and enrolled in an MHO

FIGURE 4: TOTAL ENROLLED¹ BY ETHNICITY

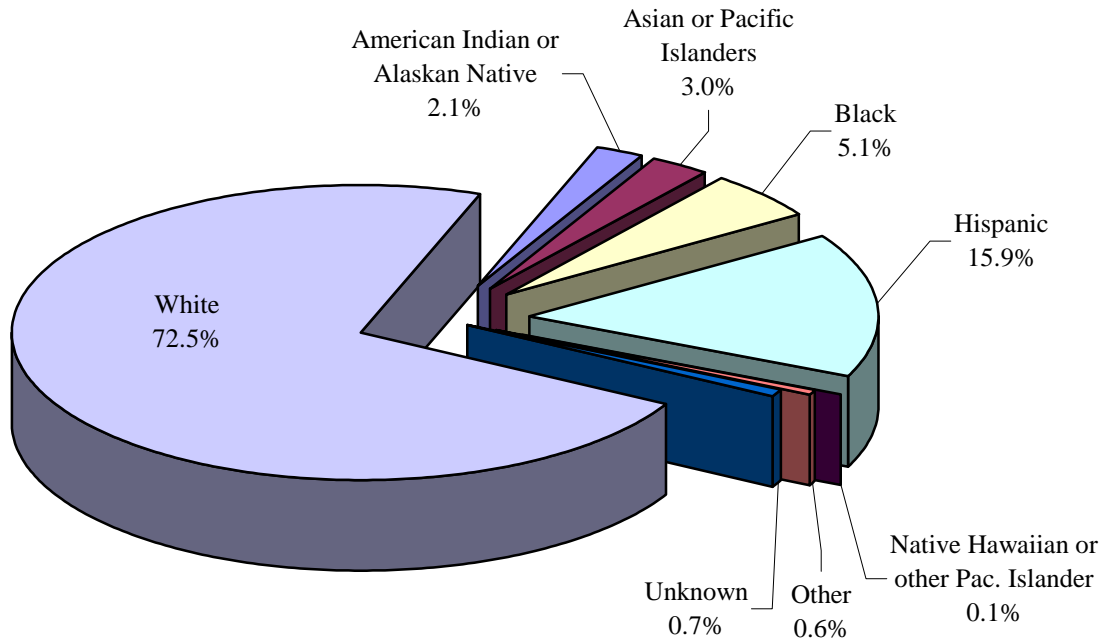


TABLE 4: ENROLLED BY ETHNICITY: MONTHLY AVERAGE PER QUARTER

MHO Contractors	Ethnicity	2003	2004			Percent by MHO Total
		4th Qtr	1st Qtr	2nd Qtr	3rd Qtr	
ABHA*	American Indian or Alaskan Native	1,090	1,057	1,103	1,527	4.3%
	Asian or Pacific Islanders	178	184	197	273	0.8%
	Black	258	248	244	273	0.9%
	Hispanic	2,673	2,547	2,741	3,095	10.0%
	Native Hawaiian or other Pac. Islander	21	16	15	22	0.1%
	Other	113	98	129	152	0.4%
	Unknown	153	157	160	169	0.6%
	White	21,649	21,481	21,847	26,673	82.9%
Clackamas	American Indian or Alaskan Native	369	385	410	473	1.6%
	Asian or Pacific Islanders	408	422	438	543	1.7%
	Black	467	469	494	538	1.9%
	Hispanic	4,373	4,310	4,672	5,301	17.7%
	Native Hawaiian or other Pac. Islander	19	16	14	18	0.1%
	Other	123	127	129	161	0.5%
	Unknown	152	175	188	198	0.7%
	White	19,072	18,747	19,438	22,868	75.9%

¹ Enrolled: Eligible for OHP and enrolled in an MHO

TABLE 4: ENROLLED¹ BY ETHNICITY: MONTHLY AVERAGE PER QUARTER
(Continued)

MHO Contractors	Ethnicity	2003	2004			Percent of MHO Total
		4th Qtr	1st Qtr	2nd Qtr	3rd Qtr	
FamilyCare	American Indian or Alaskan Native	207	216	189	222	1.6%
	Asian or Pacific Islanders	600	612	638	903	5.4%
	Black	1,563	1,673	1,573	1,965	13.2%
	Hispanic	1,153	1,316	1,336	1,446	10.2%
	Native Hawaiian or other Pac. Islander	15	12	14	7	0.1%
	Other	111	123	118	149	1.0%
	Unknown	29	45	47	59	0.3%
	White	7,806	8,043	8,028	11,235	68.2%
GOBHI	American Indian or Alaskan Native	685	728	739	887	2.4%
	Asian or Pacific Islanders	191	189	197	228	0.6%
	Black	326	319	331	394	1.1%
	Hispanic	5,911	6,106	6,399	7,197	19.9%
	Native Hawaiian or other Pac. Islander	12	20	14	18	0.0%
	Other	117	111	129	163	0.4%
	Unknown	250	256	250	264	0.8%
	White	22,611	22,867	23,279	27,473	74.8%
JBH	American Indian or Alaskan Native	1,762	1,807	1,985	2,443	2.9%
	Asian or Pacific Islanders	339	338	309	402	0.5%
	Black	692	690	651	750	1.0%
	Hispanic	4,944	5,126	5,316	5,995	7.8%
	Native Hawaiian or other Pac. Islander	49	50	55	63	0.1%
	Other	245	241	241	281	0.4%
	Unknown	525	543	522	622	0.8%
	White	56,119	55,950	57,072	68,682	86.5%
LaneCare	American Indian or Alaskan Native	565	574	612	785	1.7%
	Asian or Pacific Islanders	468	455	493	592	1.4%
	Black	807	877	917	1,003	2.5%
	Hispanic	2,502	2,606	2,698	3,028	7.4%
	Native Hawaiian or other Pac. Islander	11	12	14	25	0.0%
	Other	207	196	199	254	0.6%
	Unknown	363	380	409	431	1.1%
	White	28,989	29,137	29,842	36,627	85.3%

¹ Enrolled: Eligible for OHP and enrolled in an MHO

TABLE 4: ENROLLED¹ BY ETHNICITY: MONTHLY AVERAGE PER QUARTER
(Continued)

MHO Contractors	Ethnicity	2003	2004			Percent of MHO Total
		4th Qtr	1st Qtr	2nd Qtr	3rd Qtr	
MVBCN	American Indian or Alaskan Native	1,175	1,029	1,137	1,386	1.6%
	Asian or Pacific Islanders	887	889	887	1,074	1.3%
	Black	990	1,010	1,001	1,141	1.4%
	Hispanic	16,059	16,251	17,404	19,305	23.8%
	Native Hawaiian or other Pac. Islander	101	105	112	120	0.2%
	Other	282	320	317	403	0.5%
	Unknown	435	434	456	479	0.6%
	White	47,815	48,026	49,509	59,212	70.6%
THA	American Indian or Alaskan Native	50	45	41	39	0.6%
	Asian or Pacific Islanders	230	216	238	219	3.2%
	Black	199	233	229	191	3.0%
	Hispanic	2,299	2,227	2,322	2,097	31.8%
	Native Hawaiian or other Pac. Islander	5	4	4	5	0.1%
	Other	35	34	34	31	0.5%
	Unknown	50	59	68	71	0.9%
	White	4,145	4,356	4,402	3,980	60.0%
Verity**	American Indian or Alaskan Native	1,247	1,273	1,351	1,773	1.9%
	Asian or Pacific Islanders	5,742	5,805	5,808	6,919	8.0%
	Black	12,450	12,260	12,639	14,246	16.9%
	Hispanic	10,464	10,486	11,116	12,046	14.5%
	Native Hawaiian or other Pac. Islander	40	42	51	55	0.1%
	Other	599	599	629	730	0.8%
	Unknown	402	416	456	562	0.6%
	White	41,283	40,860	41,718	50,923	57.3%
Washington	American Indian or Alaskan Native	195	217	232	306	0.9%
	Asian or Pacific Islanders	1,720	1,709	1,732	2,170	7.1%
	Black	1,131	1,203	1,346	1,589	5.1%
	Hispanic	7,116	7,002	7,662	9,017	29.7%
	Native Hawaiian or other Pac. Islander	32	29	38	35	0.1%
	Other	250	240	228	330	1.0%
	Unknown	236	267	271	323	1.1%
	White	13,067	12,997	13,432	17,738	55.1%

¹ Enrolled: Eligible for OHP and enrolled in an MHO

TABLE 4: ENROLLED¹ BY ETHNICITY: MONTHLY AVERAGE PER QUARTER
(Continued)

MHO Contractors	Ethnicity	2003	2004		
		4th Qtr	1st Qtr	2nd Qtr	3rd Qtr
Statewide Totals	American Indian or Alaskan Native	7,345	7,331	7,799	9,841
	Asian or Pacific Islanders	10,763	10,819	10,937	13,323
	Black	18,883	18,982	19,425	22,090
	Hispanic	57,494	57,977	61,666	68,527
	Native Hawaiian or other Pac. Islander	305	306	331	368
	Other	2,082	2,089	2,153	2,654
	Unknown	2,595	2,732	2,827	3,178
	White	262,556	262,464	268,567	325,411
All Eligibles ²	American Indian or Alaskan Native	11,284	11,354	11,599	11,775
	Asian or Pacific Islanders	13,937	14,020	14,314	14,291
	Black	20,400	20,718	21,227	21,509
	Hispanic	83,351	85,457	89,678	90,894
	Native Hawaiian or other Pac. Islander	411	429	453	524
	Other	2,617	2,618	2,707	2,701
	Unknown	2,751	2,885	3,086	3,194
	White	320,909	322,714	328,980	330,753
Fee-For-Service ³ (FFS)	American Indian or Alaskan Native	6,564	7,055	7,537	7,117
	Asian or Pacific Islanders	5,268	5,218	5,581	5,133
	Black	8,131	8,197	9,253	8,443
	Hispanic	18,157	18,825	19,923	19,143
	Native Hawaiian or other Pac. Islander	113	121	143	135
	Other	899	909	957	864
	Unknown	2,013	2,106	2,205	2,265
	White	161,568	162,594	172,611	161,921

¹ Enrolled: Eligible for OHP and enrolled in an MHO

² Eligibles: Both Enrolled and FFS

³ Fee-For-Service (FFS): Eligible for OHP and NOT enrolled with an MHO (Open Card)

Unique Served
&
Penetration Rates
Within Specific Categories

FIGURE 4: TOTAL UNIQUE¹ SERVED BY QUARTER

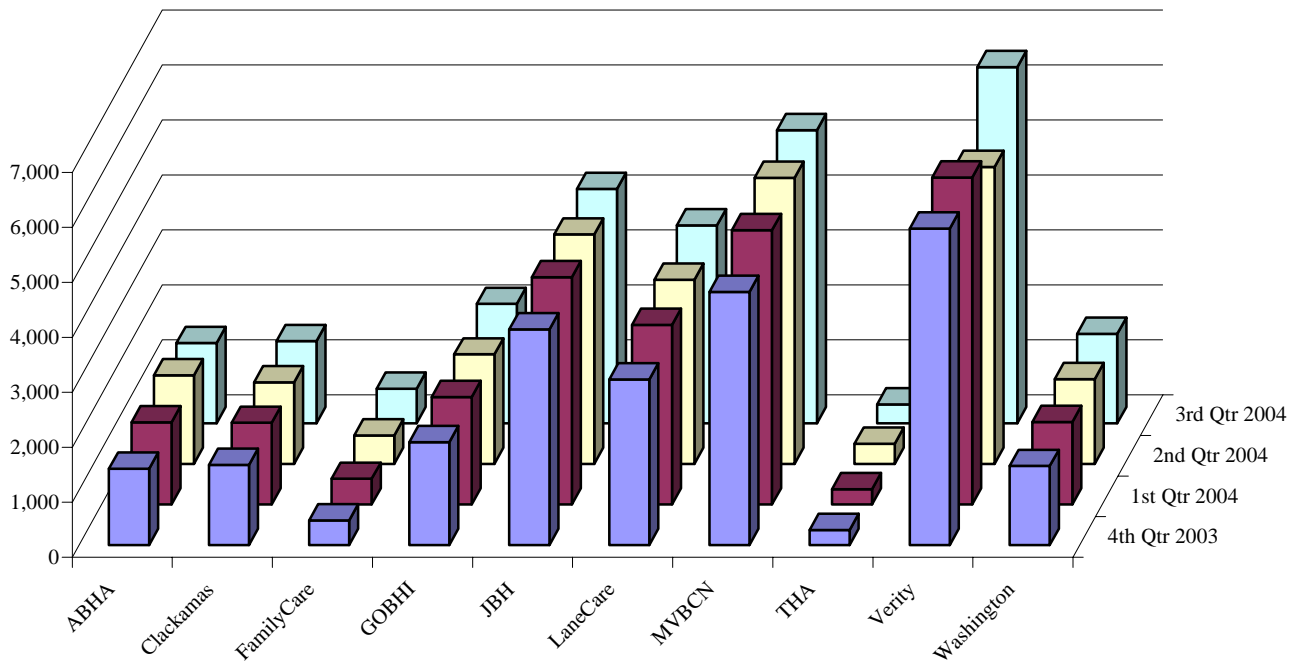


TABLE 5: UNIQUE SERVED WITH PENETRATION² RATE

MHO Contractors	2003		2004					
	4th Qtr	Rate	1st Qtr	Rate	2nd Qtr	Rate	3rd Qtr	Rate
ABHA*	1,390	5.3%	1,497	5.8%	1,608	6.1%	1,457	4.5%
Clackamas	1,463	5.9%	1,486	6.0%	1,484	5.8%	1,494	5.0%
FamilyCare	448	3.9%	469	3.9%	518	4.3%	626	3.9%
GOBHI	1,873	6.2%	1,953	6.4%	1,991	6.4%	2,170	5.9%
JBH	3,927	6.1%	4,132	6.4%	4,171	6.3%	4,258	5.4%
LaneCare	3,016	8.9%	3,268	9.5%	3,349	9.5%	3,597	8.4%
MVBCN	4,605	6.8%	4,989	7.3%	5,205	7.3%	5,329	6.4%
THA	278	4.0%	280	3.9%	367	5.0%	340	5.1%
Verity**	5,760	8.0%	5,948	8.3%	5,401	7.3%	6,475	7.4%
Washington	1,441	6.1%	1,501	6.3%	1,540	6.2%	1,628	5.2%
Total Served	24,201	6.7%	25,523	7.0%	25,634	6.9%	27,374	6.1%
FFS	870	0.4%	960	0.5%	1,153	0.5%	1,295	0.6%

¹ Unique Served: All duplicated records are removed.

² Penetration Rate: Unique Served divided by Enrolled.

TABLE 6: UNIQUE¹ SERVED BY GENDER WITH PENETRATION² RATE

MHO Contractor	Gender	2003		2004					
		4th Qtr	Rate	1st Qtr	Rate	2nd Qtr	Rate	3rd Qtr	Rate
ABHA*	F	799	5.4%	872	5.9%	914	6.1%	849	4.7%
	M	591	5.3%	625	5.6%	694	6.1%	608	4.4%
Clackamas	F	809	5.7%	804	5.8%	812	5.6%	805	4.7%
	M	654	6.0%	682	6.4%	672	6.0%	689	5.3%
FamilyCare	F	267	4.1%	286	4.1%	287	4.2%	379	4.4%
	M	181	3.7%	183	3.6%	231	4.5%	247	3.4%
GOBHI	F	1,048	6.2%	1,071	6.2%	1,080	6.1%	1,203	5.8%
	M	825	6.3%	882	6.7%	911	6.7%	967	6.1%
JBH	F	2,190	6.0%	2,321	6.3%	2,349	6.3%	2,468	5.5%
	M	1,737	6.2%	1,811	6.5%	1,822	6.4%	1,790	5.2%
LaneCare	F	1,699	8.7%	1,852	9.4%	1,925	9.5%	2,118	8.7%
	M	1,317	9.2%	1,416	9.7%	1,424	9.5%	1,479	8.1%
MVBCN	F	2,605	6.8%	2,819	7.3%	2,939	7.4%	3,045	6.5%
	M	2,000	6.8%	2,170	7.3%	2,266	7.3%	2,284	6.3%
THA	F	151	3.8%	145	3.6%	201	4.9%	193	5.2%
	M	127	4.2%	135	4.3%	166	5.2%	147	5.0%
Verity**	F	3,047	7.6%	3,193	8.0%	2,893	7.0%	3,489	7.2%
	M	2,713	8.5%	2,755	8.7%	2,508	7.7%	2,986	7.7%
Washington	F	790	5.9%	829	6.2%	854	6.1%	902	5.1%
	M	651	6.3%	672	6.5%	686	6.3%	726	5.3%
Total Served	F	13,405	6.5%	14,192	6.9%	14,254	6.7%	15,451	6.2%
	M	10,796	6.9%	11,331	7.2%	11,380	7.0%	11,923	6.1%
Fee-For-Service (FFS)	F	329	0.3%	371	0.3%	468	0.3%	535	0.4%
	M	541	0.7%	589	0.8%	685	0.8%	760	1.0%

¹ Unique Served: All duplicate records are removed.² Penetration Rate: Unique Served divided by Enrolled

FIGURE 5: UNIQUE¹ SERVED: CHILDREN (0-17) AND ADULTS (18+) BY MHO

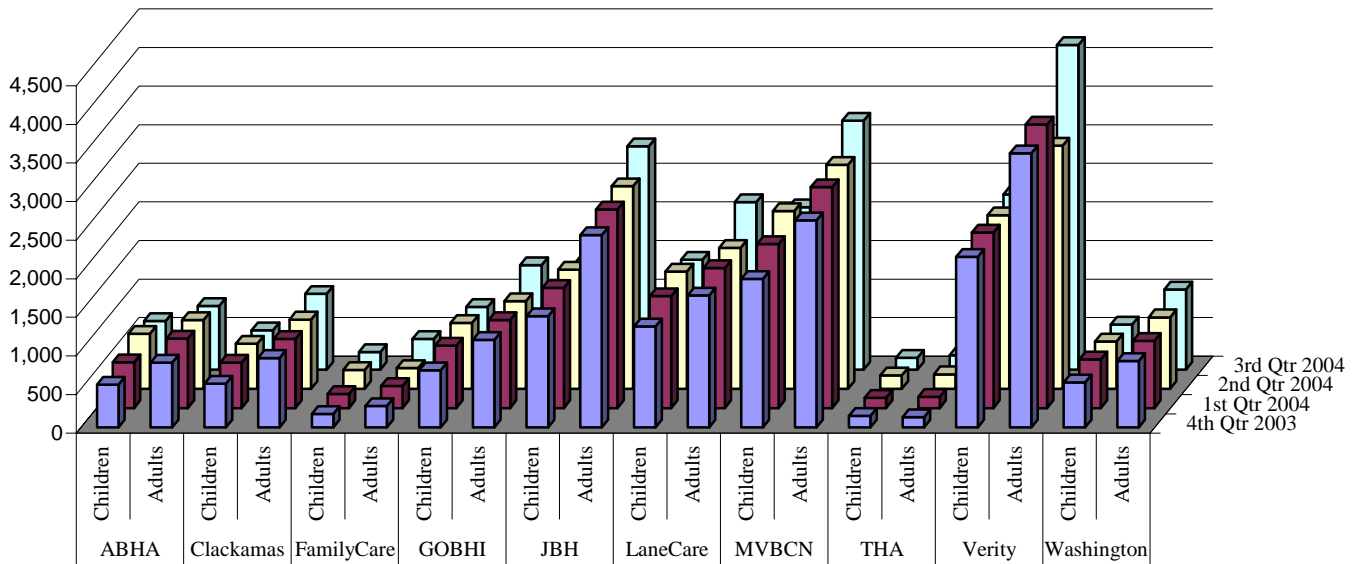


TABLE 7: UNIQUE SERVED: CHILDREN (0-17) AND ADULTS (18+) BY MHO

MHO Contractors	Age Groups	4th Qtr 2003	1st Qtr 2004	2nd Qtr 2004	3rd Qtr 2004	Percent of MHO Total
ABHA*	Children	552	595	715	630	41.9%
	Adults	838	902	893	827	58.1%
Clackamas	Children	564	589	586	511	38.0%
	Adults	899	897	898	983	62.0%
FamilyCare	Children	174	183	246	228	40.3%
	Adults	274	286	272	398	59.7%
GOBHI	Children	739	811	854	814	40.3%
	Adults	1,134	1,142	1,137	1,356	59.7%
JBH	Children	1,438	1,557	1,545	1,364	35.8%
	Adults	2,489	2,575	2,626	2,894	64.2%
LaneCare	Children	1,308	1,452	1,521	1,426	43.1%
	Adults	1,708	1,816	1,828	2,171	56.9%
MVBCN	Children	1,925	2,125	2,303	2,104	42.0%
	Adults	2,680	2,864	2,902	3,225	58.0%
THA	Children	148	133	177	154	48.4%
	Adults	130	147	190	186	51.6%
Verity**	Children	2,210	2,275	2,249	2,269	38.2%
	Adults	3,550	3,673	3,152	4,206	61.8%
Washington	Children	583	631	613	587	39.5%
	Adults	858	870	927	1,041	60.5%

¹ Unique Served: All duplicate records are removed.

TABLE 8: UNIQUE¹ SERVED BY AGE GROUP WITH PENETRATION² RATE

MHO Contractors	Age Groups	4th Qtr 2003	Rate	1st Qtr 2004	Rate	2nd Qtr 2004	Rate	3rd Qtr 2004	Rate
ABHA*	0-17	552	3.4%	595	3.8%	715	4.5%	630	3.8%
	18-64	796	9.9%	863	10.6%	845	10.0%	783	5.8%
	65+	42	2.2%	39	2.1%	48	2.5%	44	2.2%
Clackamas	0-17	564	3.6%	589	3.8%	586	3.6%	511	3.0%
	18-64	848	11.8%	847	11.9%	848	11.5%	937	8.4%
	65+	51	2.4%	50	2.3%	50	2.3%	46	2.1%
FamilyCare	0-17	174	2.3%	183	2.3%	246	3.1%	228	3.0%
	18-64	267	7.3%	279	7.4%	267	7.2%	392	4.9%
	65+	7	1.9%	7	1.8%	5	1.3%	6	1.6%
GOBHI	0-17	739	4.0%	811	4.3%	854	4.4%	814	4.1%
	18-64	1,077	12.0%	1,077	11.7%	1,072	11.3%	1,284	9.1%
	65+	57	2.4%	65	2.7%	65	2.6%	72	2.8%
JBH	0-17	1,438	3.8%	1,557	4.1%	1,545	4.0%	1,364	3.5%
	18-64	2,395	10.9%	2,468	11.2%	2,529	11.1%	2,801	8.1%
	65+	94	1.8%	107	2.1%	97	1.9%	93	1.8%
LaneCare	0-17	1,308	6.6%	1,452	7.2%	1,521	7.4%	1,426	6.7%
	18-64	1,663	13.8%	1,769	14.6%	1,783	14.2%	2,125	10.9%
	65+	45	2.2%	47	2.3%	45	2.2%	46	2.1%
MVBCN	0-17	1,925	4.4%	2,125	4.9%	2,303	5.1%	2,104	4.5%
	18-64	2,524	13.0%	2,696	13.6%	2,737	13.2%	3,059	9.8%
	65+	156	3.2%	168	3.5%	165	3.5%	166	3.4%
THA	0-17	148	3.0%	133	2.7%	177	3.5%	154	3.5%
	18-64	113	6.8%	132	7.2%	168	8.8%	170	9.7%
	65+	17	4.2%	15	3.8%	22	5.2%	16	3.6%
Verity**	0-17	2,210	5.3%	2,275	5.5%	2,249	5.3%	2,269	5.2%
	18-64	3,276	13.7%	3,377	14.2%	2,919	11.9%	3,923	10.6%
	65+	274	4.0%	296	4.2%	233	3.4%	283	4.1%
Washington	0-17	583	3.7%	631	4.1%	613	3.7%	587	3.2%
	18-64	774	12.8%	778	12.8%	842	13.1%	972	8.7%
	65+	84	4.1%	92	4.5%	85	4.1%	69	3.2%
Total Served	0-17	9,641	4.4%	10,351	4.7%	10,809	4.8%	10,087	4.3%
	18-64	13,733	12.2%	14,286	12.5%	14,010	11.9%	16,446	9.0%
	65+	827	2.9%	886	3.1%	815	2.9%	841	2.9%

Note: FFS data does not have accurate recipient date of birth and is not included in this specific data table.

¹ Unique Served: All duplicate records are removed.

² Penetration Rate: Unique Served divided by Enrolled.

FIGURE 6: TOTAL UNIQUE¹ SERVED BY ETHNICITY

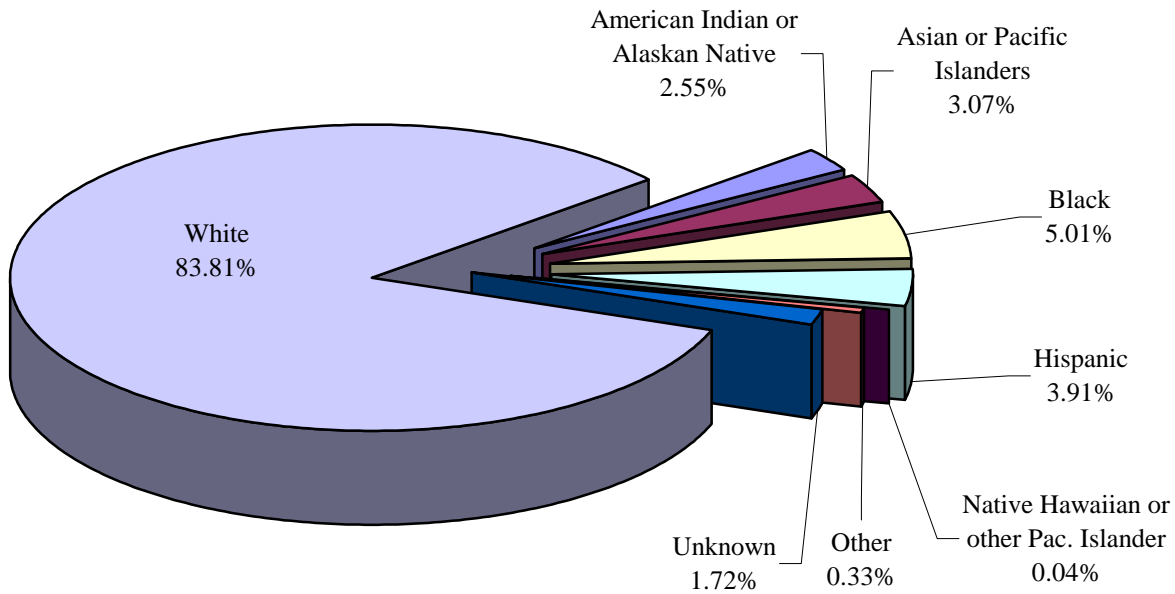


TABLE 9: UNIQUE SERVED BY ETHNICITY WITH PENETRATION² RATE

MHO Contractors	Race Description	2003		2004					
		4th Qtr	Rate	1st Qtr	Rate	2nd Qtr	Rate	3rd Qtr	Rate
ABHA*	American Indian or Alaskan Native	29	2.7%	23	2.2%	30	2.7%	31	2.0%
	Asian or Pacific Islanders	2	1.1%	4	2.2%	7	3.6%	4	1.5%
	Black	15	5.8%	14	5.6%	19	7.8%	10	3.7%
	Hispanic	35	1.3%	37	1.5%	47	1.7%	37	1.2%
	Native Hawaiian/other Pac. Islander	0	0.0%	0	0.0%	1	6.7%	1	4.5%
	Other	4	3.5%	2	2.0%	5	3.9%	3	2.0%
	Unknown	21	13.7%	15	9.6%	26	16.3%	21	12.4%
	White	1284	5.9%	1402	6.5%	1473	6.7%	1350	5.1%
Clackamas	American Indian or Alaskan Native	23	6.2%	23	6.0%	20	4.9%	20	4.2%
	Asian or Pacific Islanders	18	4.4%	19	4.5%	17	3.9%	17	3.1%
	Black	28	6.0%	27	5.8%	31	6.3%	31	5.8%
	Hispanic	47	1.1%	53	1.2%	52	1.1%	42	0.8%
	Native Hawaiian/other Pac. Islander	0	0.0%	0	0.0%	0	0.0%	0	0.0%
	Other	3	2.4%	2	1.6%	3	2.3%	3	1.9%
	Unknown	20	13.2%	22	12.6%	17	9.0%	14	7.1%
	White	1324	6.9%	1340	7.1%	1344	6.9%	1367	6.0%

¹ Unique Served: All duplicate records are removed.

² Penetration Rate: Unique Served divided by Enrolled.

TABLE 9: UNIQUE¹ SERVED BY ETHNICITY WITH PENETRATION² RATE
(continued)

MHO Contractors	Race Description	2003		2004					
		4th Qtr	Rate	1st Qtr	Rate	2nd Qtr	Rate	3rd Qtr	Rate
FamilyCare	American Indian or Alaskan Native	11	5.3%	15	6.9%	15	7.9%	17	7.7%
	Asian or Pacific Islanders	26	4.3%	22	3.6%	12	1.9%	27	3.0%
	Black	45	2.9%	62	3.7%	73	4.6%	72	3.7%
	Hispanic	13	1.1%	15	1.1%	12	0.9%	20	1.4%
	Native Hawaiian/other Pac. Islander	0	0.0%	0	0.0%	0	0.0%	0	0.0%
	Other	2	1.8%	3	2.4%	2	1.7%	4	2.7%
	Unknown	0	0.0%	2	4.4%	4	8.5%	6	10.2%
	White	351	4.5%	350	4.4%	400	5.0%	480	4.3%
GOBHI	American Indian or Alaskan Native	39	5.7%	46	6.3%	41	5.5%	54	6.1%
	Asian or Pacific Islanders	9	4.7%	13	6.9%	10	5.1%	11	4.8%
	Black	27	8.3%	29	9.1%	21	6.3%	21	5.3%
	Hispanic	107	1.8%	107	1.8%	128	2.0%	153	2.1%
	Native Hawaiian/other Pac. Islander	0	0.0%	2	10.0%	1	7.1%	1	5.6%
	Other	1	0.9%	2	1.8%	7	5.4%	6	3.7%
	Unknown	28	11.2%	31	12.1%	35	14.0%	33	12.5%
	White	1662	7.4%	1723	7.5%	1748	7.5%	1891	6.9%
JBH	American Indian or Alaskan Native	100	5.7%	137	7.6%	131	6.6%	141	5.8%
	Asian or Pacific Islanders	15	4.4%	17	5.0%	13	4.2%	13	3.2%
	Black	54	7.8%	43	6.2%	51	7.8%	54	7.2%
	Hispanic	99	2.0%	114	2.2%	101	1.9%	112	1.9%
	Native Hawaiian/other Pac. Islander	2	4.1%	2	4.0%	2	3.6%	2	3.2%
	Other	11	4.5%	14	5.8%	11	4.6%	15	5.3%
	Unknown	58	11.0%	68	12.5%	77	14.8%	74	11.9%
	White	3588	6.4%	3737	6.7%	3785	6.6%	3847	5.6%
LaneCare	American Indian or Alaskan Native	56	9.9%	58	10.1%	58	9.5%	69	8.8%
	Asian or Pacific Islanders	18	3.8%	20	4.4%	21	4.3%	23	3.9%
	Black	65	8.1%	72	8.2%	77	8.4%	74	7.4%
	Hispanic	66	2.6%	82	3.1%	73	2.7%	85	2.8%
	Native Hawaiian/other Pac. Islander	0	0.0%	0	0.0%	1	7.1%	2	8.0%
	Other	13	6.3%	16	8.2%	17	8.5%	21	8.3%
	Unknown	73	20.1%	90	23.7%	102	24.9%	96	22.3%
	White	2725	9.4%	2930	10.1%	3000	10.1%	3227	8.8%

¹ Unique Served: All duplicate records are removed.

² Penetration Rate: Unique Served divided by Enrolled.

Data Source: DSSURS

Data Pulled: 4/15/05

*ABHA has low outpatient numbers due to problems with new encounter data submission formats, which is being corrected.

*Verity has low inpatient numbers due to problems with new encounter data submission formats, which are being corrected.

TABLE 9: UNIQUE¹ SERVED BY ETHNICITY WITH PENETRATION² RATE
(continued)

MHO Contractors	Race Description	2003		2004					
		4th Qtr	Rate	1st Qtr	Rate	2nd Qtr	Rate	3rd Qtr	Rate
MVBCN	American Indian or Alaskan Native	118	10.0%	130	12.6%	141	12.4%	152	11.0%
	Asian or Pacific Islanders	43	4.8%	44	4.9%	42	4.7%	50	4.7%
	Black	67	6.8%	69	6.8%	68	6.8%	92	8.1%
	Hispanic	252	1.6%	288	1.8%	308	1.8%	283	1.5%
	Native Hawaiian/other Pac. Islander	0	0.0%	0	0.0%	3	2.7%	4	3.3%
	Other	5	1.8%	10	3.1%	11	3.5%	10	2.5%
	Unknown	64	14.7%	72	16.6%	89	19.5%	75	15.7%
	White	4056	8.5%	4376	9.1%	4543	9.2%	4663	7.9%
THA	American Indian or Alaskan Native	3	6.0%	1	2.2%	2	4.9%	3	7.7%
	Asian or Pacific Islanders	8	3.5%	7	3.2%	6	2.5%	6	2.7%
	Black	11	5.5%	14	6.0%	12	5.2%	12	6.3%
	Hispanic	21	0.9%	25	1.1%	32	1.4%	25	1.2%
	Native Hawaiian/other Pac. Islander	0	0.0%	0	0.0%	0	0.0%	0	0.0%
	Other	0	0.0%	1	2.9%	1	2.9%	0	0.0%
	Unknown	10	20.0%	10	16.9%	13	19.1%	13	18.3%
	White	225	5.4%	222	5.1%	301	6.8%	281	7.1%
Verity**	American Indian or Alaskan Native	182	14.6%	200	15.7%	193	14.3%	231	13.0%
	Asian or Pacific Islanders	520	9.1%	536	9.2%	509	8.8%	563	8.1%
	Black	856	6.9%	849	6.9%	827	6.5%	930	6.5%
	Hispanic	182	1.7%	206	2.0%	191	1.7%	215	1.8%
	Native Hawaiian/other Pac. Islander	1	2.5%	1	2.4%	1	2.0%	2	3.6%
	Other	29	4.8%	28	4.7%	21	3.3%	30	4.1%
	Unknown	78	19.4%	70	16.8%	77	16.9%	77	13.7%
	White	3912	9.5%	4058	9.9%	3582	8.6%	4427	8.7%
Washington	American Indian or Alaskan Native	15	7.7%	20	9.2%	19	8.2%	19	6.2%
	Asian or Pacific Islanders	121	7.0%	124	7.3%	118	6.8%	101	4.7%
	Black	78	6.9%	81	6.7%	89	6.6%	80	5.0%
	Hispanic	83	1.2%	89	1.3%	85	1.1%	93	1.0%
	Native Hawaiian/other Pac. Islander	2	6.3%	3	10.3%	3	7.9%	2	5.7%
	Other	7	2.8%	4	1.7%	5	2.2%	8	2.4%
	Unknown	50	21.2%	48	18.0%	44	16.2%	44	13.6%
	White	1085	8.3%	1132	8.7%	1177	8.8%	1281	7.2%

¹ Unique Served: All duplicate records are removed.

² Penetration Rate: Unique Served divided by Enrolled.

TABLE 9: UNIQUE¹ SERVED BY ETHNICITY WITH PENETRATION² RATE
(continued)

MHO Contractors	Race Description	2003		2004					
		4th Qtr	Rate	1st Qtr	Rate	2nd Qtr	Rate	3rd Qtr	Rate
Total Served	American Indian or Alaskan Native	576	7.8%	653	8.9%	650	8.3%	737	7.5%
	Asian or Pacific Islanders	780	7.2%	806	7.4%	755	6.9%	815	6.1%
	Black	1,246	6.6%	1,260	6.6%	1,268	6.5%	1,376	6.2%
	Hispanic	905	1.6%	1,016	1.8%	1,029	1.7%	1,065	1.6%
	Native Hawaiian/other Pac. Islander	5	1.6%	8	2.6%	12	3.6%	14	3.8%
	Other	75	3.6%	82	3.9%	83	3.9%	100	3.8%
	Unknown	402	15.5%	428	15.7%	484	17.1%	453	14.3%
	White	20,212	7.7%	21,270	8.1%	21,353	8.0%	22,814	7.0%
FFS	American Indian or Alaskan Native	22	0.3%	23	0.3%	31	0.4%	38	0.5%
	Asian or Pacific Islanders	6	0.1%	12	0.2%	9	0.2%	12	0.2%
	Black	64	0.8%	68	0.8%	70	0.8%	65	0.8%
	Hispanic	19	0.1%	21	0.1%	33	0.2%	43	0.2%
	Native Hawaiian/other Pac. Islander	1	0.9%	3	2.5%	3	2.1%	3	2.2%
	Other	1	0.1%	1	0.1%	4	0.4%	2	0.2%
	Unknown	27	1.3%	24	1.1%	30	1.4%	28	1.2%
	White	730	0.5%	808	0.5%	973	0.6%	1104	0.7%

¹ Unique Served: All duplicate records are removed.

² Penetration Rate: Unique Served divided by Enrolled.

FIGURE 7: TOTAL UNIQUE¹ ENCOUNTERS² BY SERVICE CATEGORIES

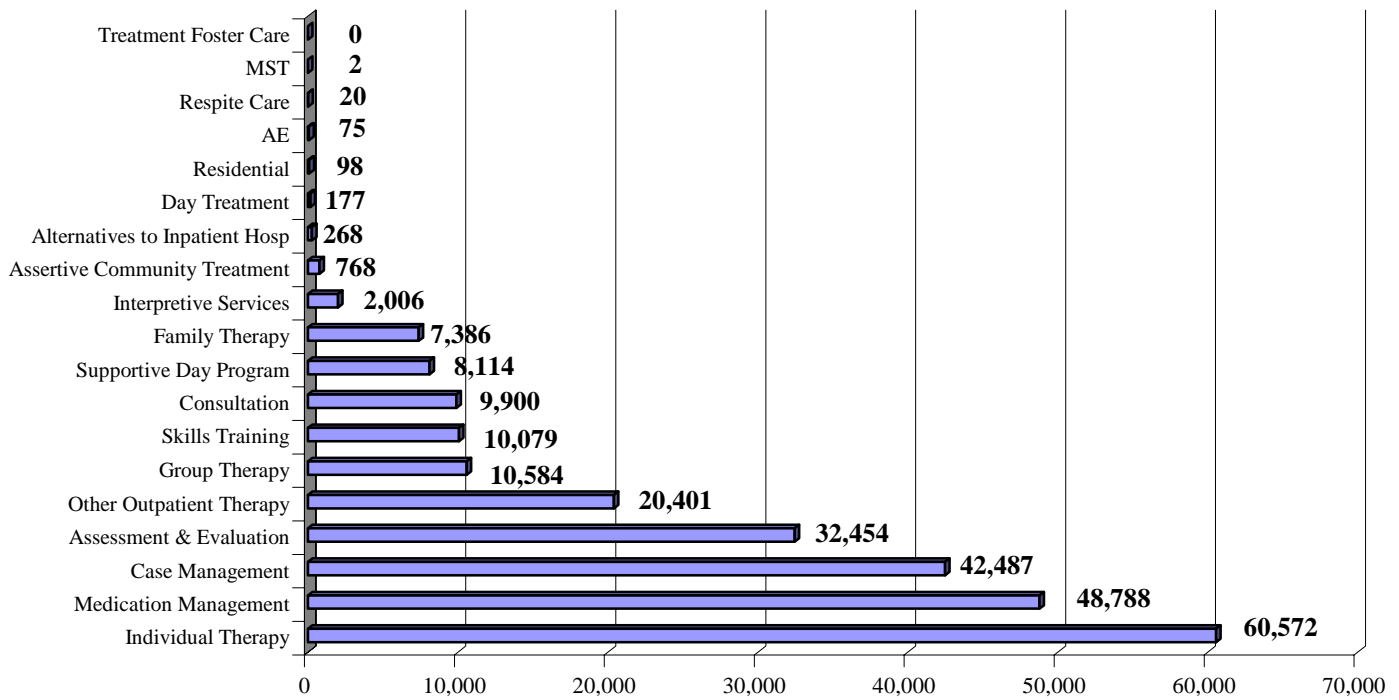


TABLE 10: UNIQUE ENCOUNTERS BY SERVICE CATEGORIES - (ABHA)

MHO Contractors	Service Categories	2003	2004		
		4th Qtr	1st Qtr	2nd Qtr	3rd Qtr
ABHA*	AE	0	0	0	0
	Alternatives to Inpatient Hosp	9	0	0	1
	Assertive Community Treatment	53	58	50	40
	Assessment & Evaluation	461	496	445	525
	Case Management	506	513	531	573
	Consultation	183	244	220	184
	Day Treatment	0	0	0	0
	Family Therapy	102	105	136	176
	Group Therapy	193	214	222	132
	Individual Therapy	972	1,126	1,268	1,021
	Interpretive Services	1	0	1	0
	MST	0	0	0	0
	Medication Management	583	616	563	520
	Other Outpatient Therapy	182	196	264	349
	Residential	0	0	0	0
	Respite Care	0	0	0	0
	Skills Training	60	105	78	95
	Supportive Day Program	90	56	53	92
	Treatment Foster Care	0	0	0	0

¹ Unique Served: All duplicate records are removed.

² Encounter(s): Claim(s) for services

**TABLE 10: UNIQUE¹ ENCOUNTERS² BY SERVICE CATEGORIES
(CLACKAMAS & FAMILYCARE) (Continued)**

MHO Contractors	Service Categories	2003	2004		
		4th Qtr	1st Qtr	2nd Qtr	3rd Qtr
Clackamas	AE	0	0	0	0
	Alternatives to Inpatient Hosp	2	2	5	3
	Assertive Community Treatment	0	0	0	0
	Assessment & Evaluation	492	443	494	504
	Case Management	752	734	693	778
	Consultation	145	165	197	126
	Day Treatment	0	0	0	0
	Family Therapy	87	82	74	49
	Group Therapy	92	112	105	117
	Individual Therapy	988	928	720	689
	Interpretive Services	2	5	5	3
	MST	0	0	0	0
	Medication Management	172	287	431	490
	Other Outpatient Therapy	269	302	312	277
	Residential	4	6	5	4
	Respite Care	0	0	0	0
	Skills Training	109	112	100	99
	Supportive Day Program	105	104	90	95
	Treatment Foster Care	0	0	0	0
FamilyCare	AE	0	0	0	0
	Alternatives to Inpatient Hosp	1	0	1	0
	Assertive Community Treatment	0	0	0	0
	Assessment & Evaluation	141	148	190	227
	Case Management	215	217	208	269
	Consultation	31	31	25	41
	Day Treatment	1	0	2	1
	Family Therapy	36	36	38	37
	Group Therapy	44	67	81	81
	Individual Therapy	191	194	207	252
	Interpretive Services	15	13	9	20
	MST	0	0	0	0
	Medication Management	206	223	206	269
	Other Outpatient Therapy	68	91	115	107
	Residential	0	0	0	0
	Respite Care	0	0	0	0
	Skills Training	39	29	31	44
	Supportive Day Program	64	60	48	67
	Treatment Foster Care	0	0	0	0

¹ Unique Served: All duplicate records are removed.

² Encounters: Claim(s) for Services

**TABLE 10: UNIQUE¹ ENCOUNTERS² BY SERVICE CATEGORIES
(GOBHI & JBH) (Continued)**

MHO Contractors	Service Categories	2003	2004		
		4th Qtr	1st Qtr	2nd Qtr	3rd Qtr
GOBHI	AE	6	7	6	4
	Alternatives to Inpatient Hosp	0	0	0	0
	Assertive Community Treatment	45	22	24	12
	Assessment & Evaluation	589	671	762	837
	Case Management	917	999	1,036	1,056
	Consultation	123	120	156	138
	Day Treatment	0	1	0	0
	Family Therapy	65	87	99	99
	Group Therapy	187	223	212	259
	Individual Therapy	769	885	872	938
	Interpretive Services	11	9	9	9
	MST	1	1	0	0
	Medication Management	960	1,038	1,073	1,084
	Other Outpatient Therapy	281	362	361	371
	Residential	2	2	2	0
	Respite Care	1	0	1	2
	Skills Training	321	311	299	280
	Supportive Day Program	191	193	180	197
	Treatment Foster Care	0	0	0	0
JBH	AE	11	14	12	15
	Alternatives to Inpatient Hosp	18	21	14	22
	Assertive Community Treatment	0	2	0	1
	Assessment & Evaluation	1,499	1,408	1,374	1,558
	Case Management	1,409	1,617	1,624	1,660
	Consultation	369	479	399	334
	Day Treatment	0	0	0	0
	Family Therapy	200	298	289	282
	Group Therapy	271	290	287	273
	Individual Therapy	2,037	2,306	2,266	2,117
	Interpretive Services	3	4	4	5
	MST	0	0	0	0
	Medication Management	2,218	2,259	2,310	2,268
	Other Outpatient Therapy	650	667	722	678
	Residential	10	11	11	13
	Respite Care	0	0	0	0
	Skills Training	513	400	356	277
	Supportive Day Program	219	191	156	120
	Treatment Foster Care	0	0	0	0

¹ Unique Served: All duplicate records are removed.² Encounters: Claim(s) for Services

**TABLE 10: UNIQUE¹ ENCOUNTERS² BY SERVICE CATEGORIES
(LANECARE & MVBCN) (Continued)**

MHO Contractors	Service Categories	2003	2004		
		4th Qtr	1st Qtr	2nd Qtr	3rd Qtr
LaneCare	AE	0	0	0	0
	Alternatives to Inpatient Hosp	19	9	17	21
	Assertive Community Treatment	45	54	28	26
	Assessment & Evaluation	960	1,142	1,032	1,420
	Case Management	910	994	985	983
	Consultation	217	287	310	276
	Day Treatment	0	0	0	0
	Family Therapy	205	123	182	144
	Group Therapy	182	157	224	224
	Individual Therapy	3,225	3,299	3,391	3,336
	Interpretive Services	4	8	9	5
	MST	0	0	0	0
	Medication Management	598	550	582	656
	Other Outpatient Therapy	955	1,141	1,073	1,109
	Residential	0	0	0	0
	Respite Care	0	0	0	0
	Skills Training	90	116	115	85
	Supportive Day Program	244	249	256	273
	Treatment Foster Care	0	0	0	0
MVBCN	AE	0	0	0	0
	Alternatives to Inpatient Hosp	0	0	0	0
	Assertive Community Treatment	106	61	63	66
	Assessment & Evaluation	1,411	1,736	1,723	1,950
	Case Management	1,577	1,812	2,060	2,184
	Consultation	588	747	617	584
	Day Treatment	0	0	0	0
	Family Therapy	392	456	522	430
	Group Therapy	454	501	552	449
	Individual Therapy	2,874	3,261	3,201	3,365
	Interpretive Services	2	3	5	9
	MST	0	0	0	0
	Medication Management	2,921	3,169	2,948	3,155
	Other Outpatient Therapy	938	1,113	1,232	1,080
	Residential	0	0	0	0
	Respite Care	0	0	0	0
	Skills Training	363	379	409	412
	Supportive Day Program	82	94	100	106
	Treatment Foster Care	0	0	0	0

¹ Unique Served: All duplicate records are removed.

² Encounters: Claim(s) for Services

**TABLE 10: UNIQUE¹ ENCOUNTERS² BY SERVICE CATEGORIES
(THA & VERITY**) (Continued)**

MHO Contractors	Service Categories	2003	2004		
		4th Qtr	1st Qtr	2nd Qtr	3rd Qtr
THA	AE	0	0		0
	Alternatives to Inpatient Hosp	2	1		0
	Assertive Community Treatment	0	1	1	0
	Assessment & Evaluation	72	85	120	113
	Case Management	65	105	97	96
	Consultation	23	20	19	11
	Day Treatment	0	0	0	
	Family Therapy	4	0	4	5
	Group Therapy	23	23	34	22
	Individual Therapy	131	127	200	184
	Interpretive Services	0	0	0	0
	MST	0	0	0	0
	Medication Management	123	135	137	141
	Other Outpatient Therapy	45	42	64	69
	Residential	0	0	0	0
	Respite Care	0	0	0	0
	Skills Training	10	18	26	23
	Supportive Day Program	34	23	4	3
	Treatment Foster Care	0	0	0	0
Verity**	AE	0	0	0	0
	Alternatives to Inpatient Hosp	21	21	20	22
	Assertive Community Treatment	0	0	0	0
	Assessment & Evaluation	1,312	1,414	1,137	1,520
	Case Management	2,986	3,103	2,474	3,495
	Consultation	674	630	360	281
	Day Treatment	61	55	50	6
	Family Therapy	830	531	535	565
	Group Therapy	859	915	765	1,019
	Individual Therapy	2,358	2,447	2,335	2,626
	Interpretive Services	350	372	392	405
	MST	0	0	0	0
	Medication Management	3,934	3,557	2,229	3,489
	Other Outpatient Therapy	864	983	1,050	1,312
	Residential	24	0	0	0
	Respite Care	2	2	4	0
	Skills Training	884	863	765	1,248
	Supportive Day Program	1,057	1,032	766	1,218
	Treatment Foster Care	0	0	0	0

¹ Unique Served: All duplicate records are removed.

² Encounters: Claim(s) for Services

**TABLE 10: UNIQUE¹ ENCOUNTERS² BY SERVICE CATEGORIES
(WASHINGTON & TOTAL SERVED) (Continued)**

MHO Contractors	Service Categories	2003	2004		
		4th Qtr	1st Qtr	2nd Qtr	3rd Qtr
Washington	AE	0	0	0	0
	Alternatives to Inpatient Hosp	5	2	3	6
	Assertive Community Treatment	1	3	6	0
	Assessment & Evaluation	409	580	486	568
	Case Management	504	559	580	611
	Consultation	140	157	155	94
	Day Treatment	0	0	0	0
	Family Therapy	21	24	19	17
	Group Therapy	153	162	204	200
	Individual Therapy	811	862	896	897
	Interpretive Services	86	92	90	46
	MST	0	0	0	0
	Medication Management	713	639	642	694
	Other Outpatient Therapy	182	166	191	168
	Residential	0	1	1	2
	Respite Care	0	6	1	1
	Skills Training	138	150	150	177
	Supportive Day Program	102	54	27	19
	Treatment Foster Care	0	0	0	0
Total Served	AE	17	21	18	19
	Alternatives to Inpatient Hosp	77	56	60	75
	Assertive Community Treatment	250	201	172	145
	Assessment & Evaluation	7,346	8,123	7,763	9,222
	Case Management	9,841	10,653	10,288	11,705
	Consultation	2,493	2,880	2,458	2,069
	Day Treatment	62	56	52	7
	Family Therapy	1,942	1,742	1,898	1,804
	Group Therapy	2,458	2,664	2,686	2,776
	Individual Therapy	14,356	15,435	15,356	15,425
	Interpretive Services	474	506	524	502
	MST	1	1	0	0
	Medication Management	12,428	12,473	11,121	12,766
	Other Outpatient Therapy	4,434	5,063	5,384	5,520
	Residential	40	20	19	19
	Respite Care	3	8	6	3
	Skills Training	2,527	2,483	2,329	2,740
	Supportive Day Program	2,188	2,056	1,680	2,190
	Treatment Foster Care	0	0	0	0

¹ Unique Served: All duplicate records are removed.

² Encounters: Claim(s) for Services

**TABLE 10: UNIQUE¹ ENCOUNTERS² BY SERVICE CATEGORIES
(FEE-FOR-SERVICE³) (Continued)**

MHO Contractors	Service Categories	2003	2004		
		4th Qtr	1st Qtr	2nd Qtr	3rd Qtr
FFS	AE	0	0	0	0
	Alternatives to Inpatient Hosp	1	1	1	1
	Assertive Community Treatment	1	0	0	1
	Assessment & Evaluation	58	93	74	125
	Case Management	69	89	168	182
	Consultation	80	86	98	129
	Day Treatment	438	546	543	567
	Family Therapy	12	13	21	24
	Group Therapy	81	82	103	128
	Individual Therapy	269	277	343	448
	Interpretive Services	2	3	2	2
	MST	0	0	0	0
	Medication Management	453	514	579	630
	Other Outpatient Therapy	20	26	64	74
	Residential	4	22	20	0
	Respite Care	0	0	0	0
	Skills Training	462	476	456	458
	Supportive Day Program	249	264	231	243
Treatment Foster Care	47	43	43	34	

¹ Unique Served: All duplicate records are removed.

² Encounters: Claim(s) for Services

³ Fee-For-Service (FFS): Eligible for OHP and NOT enrolled with an MHO (Open Card)

FIGURE 8: TOTAL UNIQUE¹ ENCOUNTERS² BY DIAGNOSTIC GROUPS

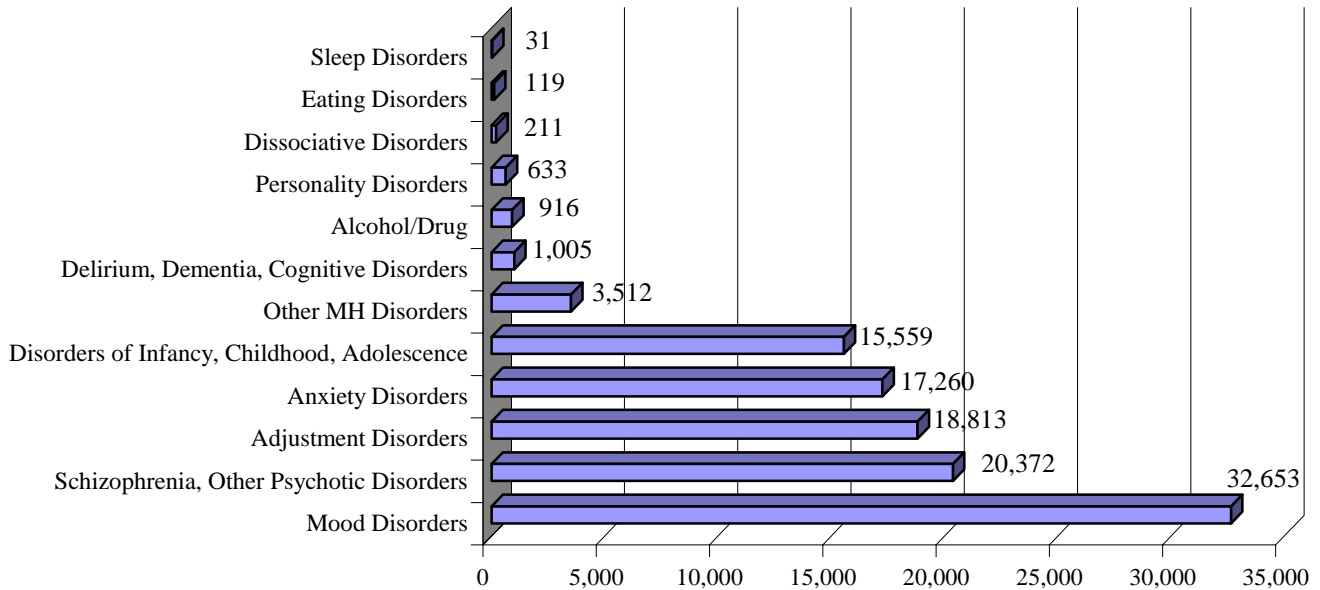


TABLE 11: UNIQUE SERVED BY DIAGNOSTIC GROUPS - (ABHA)

MHO Contractors	Diagnostic Group	2003		2004	
		4th Qtr	1st Qtr	2nd Qtr	3rd Qtr
ABHA*	Adjustment Disorders	275	311	342	326
	Alcohol/Drug	4	12	11	18
	Anxiety Disorders	271	321	345	292
	Delirium, Dementia, Cognitive Disorders	16	14	15	14
	Disorders of Infancy, Childhood, Adolescence	183	201	228	183
	Dissociative Disorders	6	10	5	3
	Eating Disorders	1	1	2	4
	Mood Disorders	519	524	544	450
	Other MH Disorders	36	30	36	47
	Personality Disorders	13	14	14	9
	Schizophrenia, Other Psychotic Disorders	249	263	246	163
	Sleep Disorders	0	0	0	0

¹ Unique Served: All duplicate records are removed.

² Encounters: Claim(s) for Services

**TABLE 11: UNIQUE¹ ENCOUNTERS² BY DIAGNOSTIC GROUPS
(CLACKAMAS, FAMILYCARE & GOBHI) (Continued)**

MHO Contractors	Diagnostic Group	2003	2004		
		4th Qtr	1st Qtr	2nd Qtr	3rd Qtr
Clackamas	Adjustment Disorders	279	310	287	266
	Alcohol/Drug	33	38	33	48
	Anxiety Disorders	190	196	206	193
	Delirium, Dementia, Cognitive Disorders	14	14	19	14
	Disorders of Infancy, Childhood, Adolescence	229	222	227	216
	Dissociative Disorders	0	0	1	0
	Eating Disorders	3	1	2	5
	Mood Disorders	402	411	411	426
	Other MH Disorders	57	37	51	54
	Personality Disorders	14	13	12	12
	Schizophrenia, Other Psychotic Disorders	315	318	315	339
	Sleep Disorders	3	2	0	1
	FamilyCare	Adjustment Disorders	81	85	113
Alcohol/Drug		7	7	4	5
Anxiety Disorders		61	68	70	119
Delirium, Dementia, Cognitive Disorders		2	2	3	2
Disorders of Infancy, Childhood, Adolescence		64	71	96	86
Dissociative Disorders		0	0	0	0
Eating Disorders		1	0	2	4
Mood Disorders		160	169	177	232
Other MH Disorders		7	9	12	13
Personality Disorders		1	1	1	1
Schizophrenia, Other Psychotic Disorders		86	86	73	96
Sleep Disorders		0	0	0	0
GOBHI		Adjustment Disorders	248	262	275
	Alcohol/Drug	23	43	46	37
	Anxiety Disorders	302	303	305	340
	Delirium, Dementia, Cognitive Disorders	15	16	19	18
	Disorders of Infancy, Childhood, Adolescence	388	424	447	466
	Dissociative Disorders	6	5	2	3
	Eating Disorders	1	2	2	3
	Mood Disorders	605	646	650	749
	Other MH Disorders	189	194	188	237
	Personality Disorders	22	22	19	19
	Schizophrenia, Other Psychotic Disorders	361	348	368	384
	Sleep Disorders	1	1	2	0

¹ Unique Served: All duplicate records are removed.

² Encounters: Claim(s) for Services

TABLE 11: UNIQUE¹ ENCOUNTERS² BY DIAGNOSTIC GROUPS (JBH, LANE CARE & MVBCN)

MHO Contractors	Diagnostic Group	2003	2004		
		4th Qtr	1st Qtr	2nd Qtr	3rd Qtr
JBH	Adjustment Disorders	728	737	752	691
	Alcohol/Drug	31	20	23	31
	Anxiety Disorders	635	662	687	689
	Delirium, Dementia, Cognitive Disorders	30	37	41	38
	Disorders of Infancy, Childhood, Adolescence	488	523	573	508
	Dissociative Disorders	12	12	10	11
	Eating Disorders	7	6	8	9
	Mood Disorders	1,167	1,286	1,317	1,398
	Other MH Disorders	168	171	159	208
	Personality Disorders	30	36	29	36
	Schizophrenia, Other Psychotic Disorders	795	852	855	854
	Sleep Disorders	0	2	2	2
	LaneCare	Adjustment Disorders	699	804	837
Alcohol/Drug		6	7	8	7
Anxiety Disorders		618	692	741	771
Delirium, Dementia, Cognitive Disorders		1	1	1	2
Disorders of Infancy, Childhood, Adolescence		442	461	500	476
Dissociative Disorders		5	6	5	6
Eating Disorders		4	2	1	1
Mood Disorders		922	1,011	1,022	1,084
Other MH Disorders		119	124	8	321
Personality Disorders		13	7	7	5
Schizophrenia, Other Psychotic Disorders		518	547	538	591
Sleep Disorders		0	0	0	0
MVBCN		Adjustment Disorders	964	1,082	1,195
	Alcohol/Drug	37	41	44	28
	Anxiety Disorders	743	820	830	906
	Delirium, Dementia, Cognitive Disorders	89	100	95	93
	Disorders of Infancy, Childhood, Adolescence	710	780	808	772
	Dissociative Disorders	17	20	18	19
	Eating Disorders	5	6	10	11
	Mood Disorders	1,458	1,608	1,594	1,778
	Other MH Disorders	98	106	141	164
	Personality Disorders	54	49	41	47
	Schizophrenia, Other Psychotic Disorders	910	964	975	1,033
	Sleep Disorders	2	3	3	2

¹ Unique Served: All duplicate records are removed.

² Encounters: Claim(s) for Services

**TABLE 11: UNIQUE¹ ENCOUNTERS² BY DIAGNOSTIC GROUPS
(THA, VERITY**, & WASHINGTON)**

MHO Contractors	Diagnostic Group	2003	2004		
		4th Qtr	1st Qtr	2nd Qtr	3rd Qtr
THA	Adjustment Disorders	49	52	74	56
	Alcohol/Drug	1	1	1	1
	Anxiety Disorders	49	44	66	64
	Delirium, Dementia, Cognitive Disorders	2	3	3	4
	Disorders of Infancy, Childhood, Adolescence	62	48	55	53
	Dissociative Disorders	0	0	0	0
	Eating Disorders	1	0	0	0
	Mood Disorders	95	103	133	132
	Other MH Disorders	4	3	4	4
	Personality Disorders	1	0	0	0
	Schizophrenia, Other Psychotic Disorders	27	34	39	38
	Sleep Disorders	0	0	0	0
	Verity**	Adjustment Disorders	865	853	801
Alcohol/Drug		61	54	41	62
Anxiety Disorders		887	892	844	975
Delirium, Dementia, Cognitive Disorders		45	46	37	43
Disorders of Infancy, Childhood, Adolescence		863	900	866	892
Dissociative Disorders		7	6	5	7
Eating Disorders		3	2	4	3
Mood Disorders		1,808	1,847	1,611	2,125
Other MH Disorders		88	111	81	146
Personality Disorders		22	19	16	21
Schizophrenia, Other Psychotic Disorders		1,378	1,428	1,185	1,485
Sleep Disorders		1	2	0	0
Washington		Adjustment Disorders	191	227	247
	Alcohol/Drug	6	9	12	15
	Anxiety Disorders	260	271	244	288
	Delirium, Dementia, Cognitive Disorders	24	27	25	21
	Disorders of Infancy, Childhood, Adolescence	258	268	261	261
	Dissociative Disorders	0	1	3	0
	Eating Disorders	1	0	0	1
	Mood Disorders	454	485	525	615
	Other MH Disorders	23	23	23	18
	Personality Disorders	4	3	5	1
	Schizophrenia, Other Psychotic Disorders	309	318	335	354
	Sleep Disorders	0	0	1	1

¹ Unique Served: All duplicate records are removed.

² Encounters: Claim(s) for Services

TABLE 11: UNIQUE¹ ENCOUNTERS² BY DIAGNOSTIC GROUPS: MONTHLY AVERAGE BY QUARTER (TOTAL SERVED & FFS³)

MHO Contractors	Diagnostic Group	2003	2004		
		4th Qtr	1st Qtr	2nd Qtr	3rd Qtr
Total Served	Adjustment Disorders	4,379	4,723	4,923	4,788
	Alcohol/Drug	209	232	223	252
	Anxiety Disorders	4,016	4,269	4,338	4,637
	Delirium, Dementia, Cognitive Disorders	238	260	258	249
	Disorders of Infancy, Childhood, Adolescence	3,687	3,898	4,061	3,913
	Dissociative Disorders	53	60	49	49
	Eating Disorders	27	20	31	41
	Mood Disorders	7,590	8,090	7,984	8,989
	Other MH Disorders	789	808	703	1,212
	Personality Disorders	174	164	144	151
	Schizophrenia, Other Psychotic Disorders	4,948	5,158	4,929	5,337
	Sleep Disorders	7	10	8	6
	FFS	Adjustment Disorders	45	50	104
Alcohol/Drug		11	8	10	18
Anxiety Disorders		115	134	154	174
Delirium, Dementia, Cognitive Disorders		7	15	13	9
Disorders of Infancy, Childhood, Adolescence		205	230	265	303
Dissociative Disorders		1	2	1	3
Eating Disorders		1	1	0	3
Mood Disorders		146	129	215	287
Other MH Disorders		7	23	22	3
Personality Disorders		2	2	1	0
Schizophrenia, Other Psychotic Disorders		408	416	439	460
Sleep Disorders		0	0	0	0

¹ Unique Served: All duplicate records are removed.

² Encounters: Claim(s) for Services

³ Fee-For-Service (FFS): Eligible for OHP and NOT enrolled with an MHO (Open Card)

Hospital Data

TABLE 12: UNIQUE¹ HOSPITAL ADMISSIONS PER 1,000 MEMBERS

MHO Contractors	2003	2004			MHO Total
	4th Qtr	1st Qtr	2nd Qtr	3rd Qtr	
ABHA	1.1	0.9	1.2	0.7	0.9
Clackamas	2.0	2.0	1.7	1.8	1.9
FamilyCare	0.0	0.0	0.9	1.3	0.6
GOBHI	0.6	0.6	0.3	0.6	0.5
JBH	2.7	2.7	2.2	2.4	2.5
LaneCare	2.5	2.1	1.9	2.1	2.2
MVBCN	1.0	0.8	0.9	0.8	0.9
THA	0.0	0.0	0.0	0.0	0.0
Verity*	2.3	3.3	3.4	3.0	3.0
Washington	2.3	2.2	2.1	2.4	2.3
Quarterly Total	1.8	1.9	1.8	1.8	1.8

TABLE 13: UNIQUE HOSPITAL ADMISSIONS BY AGE GROUPS PER 1,000 MEMBERS

MHO Contractors	Age Group	2003	2004			MHO Totals
		4th Qtr	1st Qtr	2nd Qtr	3rd Qtr	
ABHA	0-17	0.4	0.3	0.7	0.1	0.4
	18-64	2.4	2.2	2.4	1.5	2.4
	65+	1.1	0.0	0.0	0.0	1.1
Clackamas	0-17	0.6	0.5	1.1	0.8	0.6
	18-64	5.6	5.5	3.4	3.4	5.6
	65+	0.5	0.9	0.0	1.8	0.5
FamilyCare	0-17	0.0	0.0	0.5	0.5	0.0
	18-64	0.0	0.0	1.9	2.0	0.0
	65+	0.0	0.0	0.0	0.0	0.0
GOBHI	0-17	0.2	0.1	0.2	0.1	0.2
	18-64	1.3	1.6	0.7	1.3	1.3
	65+	0.8	0.4	0.0	0.4	0.8
JBH	0-17	0.6	0.9	0.9	0.7	0.6
	18-64	6.8	6.1	4.5	4.7	6.8
	65+	0.4	1.2	1.0	0.2	0.4
LaneCare	0-17	0.3	0.5	0.1	0.3	0.3
	18-64	6.0	4.8	4.5	4.1	6.0
	65+	3.4	1.9	3.8	1.9	3.4

¹ Unique: All duplicated records are removed.

TABLE 14: UNIQUE¹ HOSPITAL ADMISSIONS BY AGE GROUPS PER 1,000 MEMBERS

MHO Contractors	Age Group	2003	2004			MHO Totals
		4th Qtr	1st Qtr	2nd Qtr	3rd Qtr	
MVBCN	0-17	0.2	0.1	0.2	0.2	0.2
	18-64	2.9	2.2	2.6	1.7	2.9
	65+	1.2	1.7	0.8	0.6	1.2
THA	0-17	0.0	0.0	0.0	0.0	0.0
	18-64	0.0	0.0	0.0	0.0	0.0
	65+	0.0	0.0	0.0	0.0	0.0
Verity*	0-17	0.7	1.1	1.1	0.7	0.7
	18-64	5.7	8.0	8.2	6.2	5.7
	65+	0.6	0.6	0.7	0.4	0.6
Washington	0-17	1.3	0.8	0.7	0.9	1.3
	18-64	5.5	6.4	6.1	5.1	5.5
	65+	0.5	0.5	0.5	0.9	0.5
Total	0-17	0.5	0.5	0.6	0.5	0.5
	18-64	4.6	4.7	4.3	3.7	4.6
	65+	0.9	0.9	0.8	0.6	0.9

TABLE 15: TOTAL UNIQUE HOSPITAL DAYS PER 1,000 MEMBERS

MHO Contractors	2003	2004		
	4th Qtr	1st Qtr	2nd Qtr	3rd Qtr
ABHA	12.7	10.4	9.0	10.2
Clackamas	14.8	19.9	14.4	11.8
FamilyCare	0.0	0.0	6.9	15.5
GOBHI	5.2	7.4	2.8	6.3
JBH	14.6	16.3	14.7	14.7
LaneCare	19.0	20.2	17.2	22.1
MVBCN	7.3	10.0	11.5	9.5
THA	0.0	0.0	0.0	0.0
Verity*	16.4	30.7	26.2	23.7
Washington	18.0	17.6	17.4	22.8
Total	12.6	16.6	14.8	15.4

¹ Unique: All duplicated records are removed

TABLE 16: TOTAL UNIQUE HOSPITAL DAYS BY AGE GROUP PER 1,000 MEMBERS

MHO Contractors	Age Groups	2003	2004		
		4th Qtr	1st Qtr	2nd Qtr	3rd Qtr
ABHA	0-17	4.3	4.7	6.4	0.9
	18-64	25.5	23.7	16.1	23.3
	65+	30.7	0.0	0.0	0.0
Clackamas	0-17	4.8	5.7	10.3	5.3
	18-64	39.9	50.3	27.6	21.7
	65+	3.3	20.5	0.0	10.9
FamilyCare	0-17	0.0	0.0	2.9	3.3
	18-64	0.0	0.0	16.1	27.7
	65+	0.0	0.0	0.0	0.0
GOBHI	0-17	1.6	0.3	1.3	0.7
	18-64	9.0	22.1	6.6	13.8
	65+	18.7	6.2	0.0	8.2
JBH	0-17	4.6	8.4	9.1	8.0
	18-64	34.4	30.6	23.5	24.4
	65+	2.7	11.5	17.9	0.8
LaneCare	0-17	1.9	4.7	2.3	3.5
	18-64	40.1	45.3	34.7	40.9
	65+	60.3	23.5	58.8	35.3
MVBCN	0-17	1.4	1.7	1.8	2.0
	18-64	19.0	26.4	33.3	20.5
	65+	12.2	17.9	9.3	11.6
THA	0-17	0.0	0.0	0.0	0.0
	18-64	0.0	0.0	0.0	0.0
	65+	0.0	0.0	0.0	0.0
Verity*	0-17	7.4	10.1	7.8	5.5
	18-64	35.5	73.9	62.0	49.2
	65+	4.5	4.7	11.5	1.9
Washington	0-17	11.8	8.5	5.3	8.7
	18-64	39.0	45.1	52.3	46.1
	65+	3.4	4.9	5.8	21.0
Totals	0-17	4.2	5.4	5.3	4.4
	18-64	28.9	39.8	33.7	30.7
	65+	12.3	10.5	12.4	8.3

TABLE 17: PERCENT OF HOSPITAL RE-ADMISSION WITHIN 30 DAYS

MHO Contractors	2003	2004			Total
	4th Qtr	1st Qtr	2nd Qtr	3rd Qtr	
ABHA	7.1%	8.7%	6.3%	9.1%	7.6%
Clackamas	6.0%	18.4%	11.6%	20.0%	14.2%
FamilyCare	0.0%	0.0%	9.1%	10.0%	9.7%
GOBHI	11.1%	5.9%	10.0%	4.8%	7.6%
JBH	13.3%	16.2%	14.6%	12.5%	14.1%
LaneCare	7.0%	6.9%	14.7%	17.6%	11.7%
MVBCN	15.7%	1.8%	7.7%	19.4%	11.6%
THA	0.0%	0.0%	0.0%	0.0%	0.0%
Verity*	7.1%	7.2%	13.0%	13.0%	10.4%
Washington	11.1%	7.7%	9.6%	9.2%	9.4%
Total	6.9%	8.7%	9.8%	8.9%	8.6%

TABLE 18: TOTAL HOSPITAL RE-ADMISSION WITHIN 180 DAYS

MHO Contractors	2003	2004			Total
	4 th Qtr	1 st Qtr	2 nd Qtr	3 rd Qtr	
ABHA	10.7%	26.1%	15.6%	22.7%	18.1%
Clackamas	8.0%	34.7%	30.2%	30.9%	25.9%
FamilyCare	0.0%	0.0%	9.1%	10.0%	9.7%
GOBHI	11.1%	17.6%	10.0%	9.5%	12.1%
JBH	19.1%	31.8%	33.3%	27.1%	27.6%
LaneCare	11.6%	18.1%	27.9%	30.8%	22.1%
MVBCN	15.7%	15.8%	20.0%	25.4%	19.3%
THA	0.0%	0.0%	0.0%	0.0%	0.0%
Verity	8.3%	16.5%	31.5%	30.2%	23.0%
Washington	13.0%	19.2%	25.0%	21.1%	19.7%
Total	8.9%	19.2%	21.4%	19.7%	17.4%

FIGURE 9: ENROLLED MEMBERS SEEN WITHIN 7 DAYS OF DISCHARGE BY MONTH

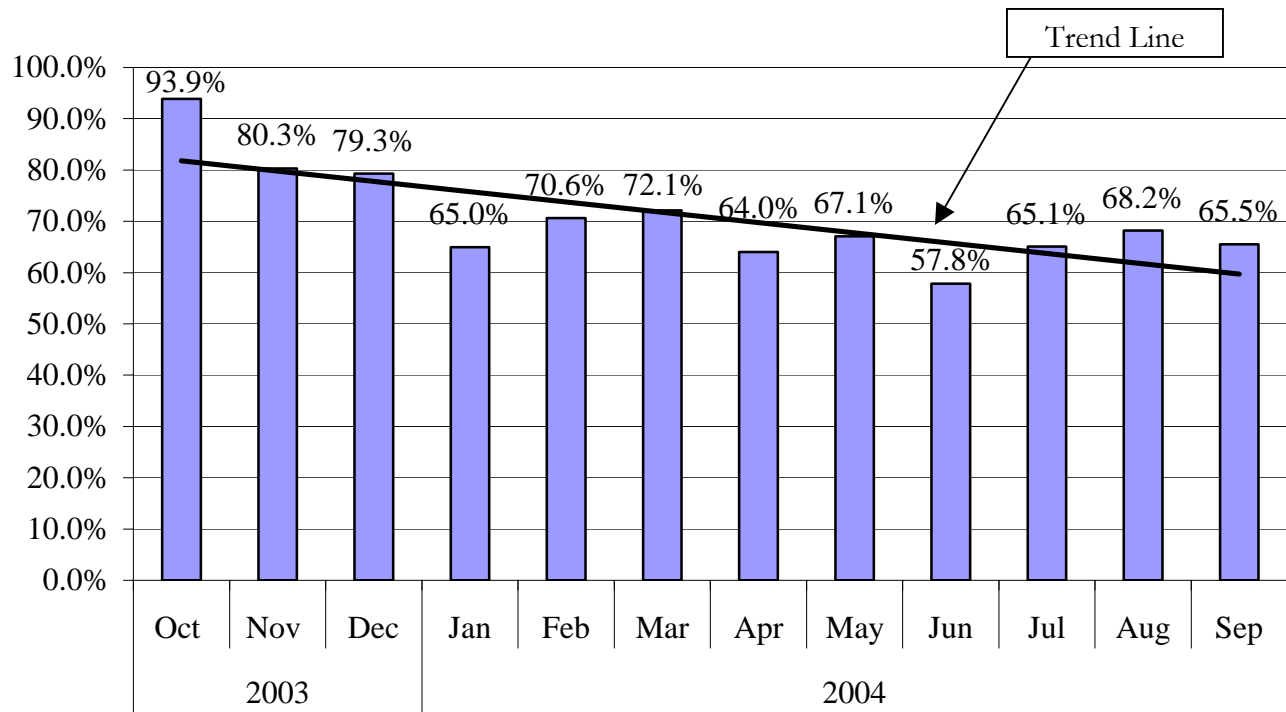


TABLE 21: ENROLLED MEMBERS SEEN WITHIN 7 DAYS OF DISCHARGE: BY MHO

MHO Contractors	2003		2004	
	4th Qtr	1st Qtr	2nd Qtr	3rd Qtr
ABHA	78.1%	67.9%	57.9%	51.5%
Clackamas	76.9%	73.0%	78.4%	67.3%
FamilyCare	0.0%	0.0%	83.3%	61.5%
GOBHI	76.2%	46.8%	42.3%	49.3%
JBH	80.7%	71.1%	63.4%	66.2%
LaneCare	89.3%	56.2%	76.1%	64.3%
MVBCN	84.2%	65.3%	73.3%	59.0%
THA	0.0%	0.0%	0.0%	0.0%
Verity*	89.3%	80.0%	51.2%	76.9%
Washington	79.4%	66.7%	70.6%	64.2%
Total	84.0%	69.9%	62.6%	66.6%

Data Source: DSSURS

Data Pulled: 4/15/05

*ABHA has low outpatient numbers due to problems with new encounter data submission formats, which is being corrected.

*Verity has low inpatient numbers due to problems with new encounter data submission formats, which are being corrected.

MHO UTILIZATION REPORT GLOSSARY

DIAGNOSIS CATEGORY:

Diagnosis categories are defined by the grouping of diagnoses in the most recent version of the American Psychiatric Association's Diagnostic and Statistical Manual (DSM).

ELIGIBLE:

An individual eligible for services under the OHP, but may not be enrolled into an MHO. Includes enrolled and fee-for-service.

ENROLLED (ENROLLEE):

Eligible for the Oregon Health Plan (OHP) and enrolled in an MHO.

FEE-FOR-SERVICE (FFS):

Individuals who are eligible for the OHP, but are not enrolled with an MHO. This is also known as fee-for-service (FFS) or an "open card".

MENTAL HEALTH ORGANIZATION (MHO):

A Prepaid Health Plan under contract with DHS to provide Covered Services under the OHP Medicaid Demonstration Project and State Children's Health Insurance Program (SCHIP). MHOs can be FCHPs, CMHPs, or private MHOs or combinations thereof.

OFFICE OF MENTAL HEALTH AND ADDICTION SERVICES (OMHAS):

The program office of DHS that is responsible for the administration of mental health services for the State of Oregon.

OREGON HEALTH PLAN (OHP):

Oregon's health care reform effort consisting of a Medicaid Demonstration Project, State Children's Health Insurance Program, an individual insurance program for persons excluded from health insurance coverage due to pre-existing health conditions, and a group insurance program for small businesses. One objective of this reform effort includes universal coverage for Oregonians. In the context of this report, OHP refers to all individuals on FFS.

PERCENT ENROLLEES SERVED:

This is a general measure of access, but more related to utilization of services. It is a percentage calculated by summing the unique enrollees seen during a given time period and dividing that number by the total enrollees for that time period. For

example, if there is 10,000 enrollees statewide in a given month and during that same month 500 of those enrollees receive services, the percent of enrollees served is 5%.

SERVICE CATEGORY:

Service category is a descriptive grouping of service codes (BA, ECC, and CPT) that are similar procedurally.

ENROLLMENT NUMBERS PER MONTH BY MHO

MHO Contractor	Oct-03	Nov-03	Dec-03	Jan-04	Feb-04	Mar-04	Apr-04	May-04	Jun-04	Jul-04	Aug-04	Sep-04
ABHA	20,235	19,776	19,872	20,030	20,089	20,109	20,295	20,418	20,628	20,918	25,156	25,005
Clackamas	19,497	19,138	19,138	19,117	19,071	19,311	19,778	19,931	20,330	20,441	23,255	23,368
FamilyCare	6,533	8,788	8,780	8,900	8,966	8,964	9,043	8,919	8,805	8,760	12,716	11,694
GOBHI	23,328	23,243	23,479	23,791	23,736	23,825	24,169	24,415	24,548	24,790	28,577	28,516
JBH	50,462	50,778	50,611	50,739	50,637	50,805	51,363	51,494	52,279	52,639	62,562	62,325
LaneCare	26,546	26,858	26,919	26,947	26,987	27,073	27,361	27,513	27,829	28,095	33,799	33,744
MVBCN	52,406	53,305	53,247	53,402	52,971	53,537	54,635	55,105	56,153	56,830	65,623	65,377
THA	4,984	5,316	5,481	5,411	5,483	5,564	5,607	5,675	5,705	5,734	5,226	4,812
Verity	57,399	56,149	56,400	56,870	56,650	56,882	57,886	58,352	58,784	59,237	69,509	69,559
Washington	18,018	17,925	18,140	18,267	18,256	18,353	18,950	19,395	19,612	20,099	24,275	24,948
Monthly Totals	283,474	282,846	284,423	283,474	282,846	284,423	289,087	291,217	294,673	297,543	350,698	349,348

% Monthly Increase/Decrease	-0.2%	0.6%	-0.3%	-0.2%	0.6%	1.6%	0.7%	1.2%	1.0%	15.2%	-0.4%	Overall 18.9%
-----------------------------	-------	------	-------	-------	------	------	------	------	------	-------	-------	------------------

Eligibles	418,163	416,217	415,956	417,300	419,001	424,775	428,475	430,217	437,037	441,231	441,349	437,327
Fee-for-Service	150,775	137,121	140,894	149,327	144,873	142,744	158,668	151,745	151,598	154,132	142,760	139,789

NUMBER SERVED PER MONTH BY MHO

MHO Contractors	Oct-03	Nov-03	Dec-03	Jan-04	Feb-04	Mar-04	Apr-04	May-04	Jun-04	Jul-04	Aug-04	Sep-04
ABHA	2,369	1,835	2,414	2,228	2,423	2,833	2,599	2,433	2,269	337	2,225	2,115
Clackamas	1,948	1,552	2,059	1,835	2,086	2,172	2,110	1,764	1,879	1,769	1,984	1,923
FamilyCare	510	690	712	643	771	566	689	702	651	686	924	901
GOBHI	3,722	3,076	3,703	3,753	3,669	4,475	4,062	3,677	3,990	3,849	3,926	4,115
JBH	6,237	5,322	5,585	6,061	5,545	6,539	6,374	5,860	5,655	4,249	4,974	5,169
LaneCare	5,938	5,452	5,747	6,228	6,091	6,778	6,495	6,088	5,909	5,605	5,785	5,944
MVBCN	6,396	5,807	6,438	6,845	7,267	8,425	8,232	7,553	7,604	6,914	7,411	8,397
THA	280	293	283	282	333	378	356	439	424	328	401	334
Verity	13,304	10,557	11,760	11,152	12,870	13,873	5,865	4,578	12,594	11,704	12,195	1,458
Washington	2,312	1,979	2,102	2,136	2,281	2,517	2,538	2,330	2,448	2,339	2,442	2,400
FFS	3,651	3,246	3,958	3,941	3,752	4,126	3,762	3,616	3,839	3,806	3,690	3,651
Total	43,016	36,563	40,803	41,163	43,336	48,556	39,320	35,424	43,423	37,780	42,267	32,756