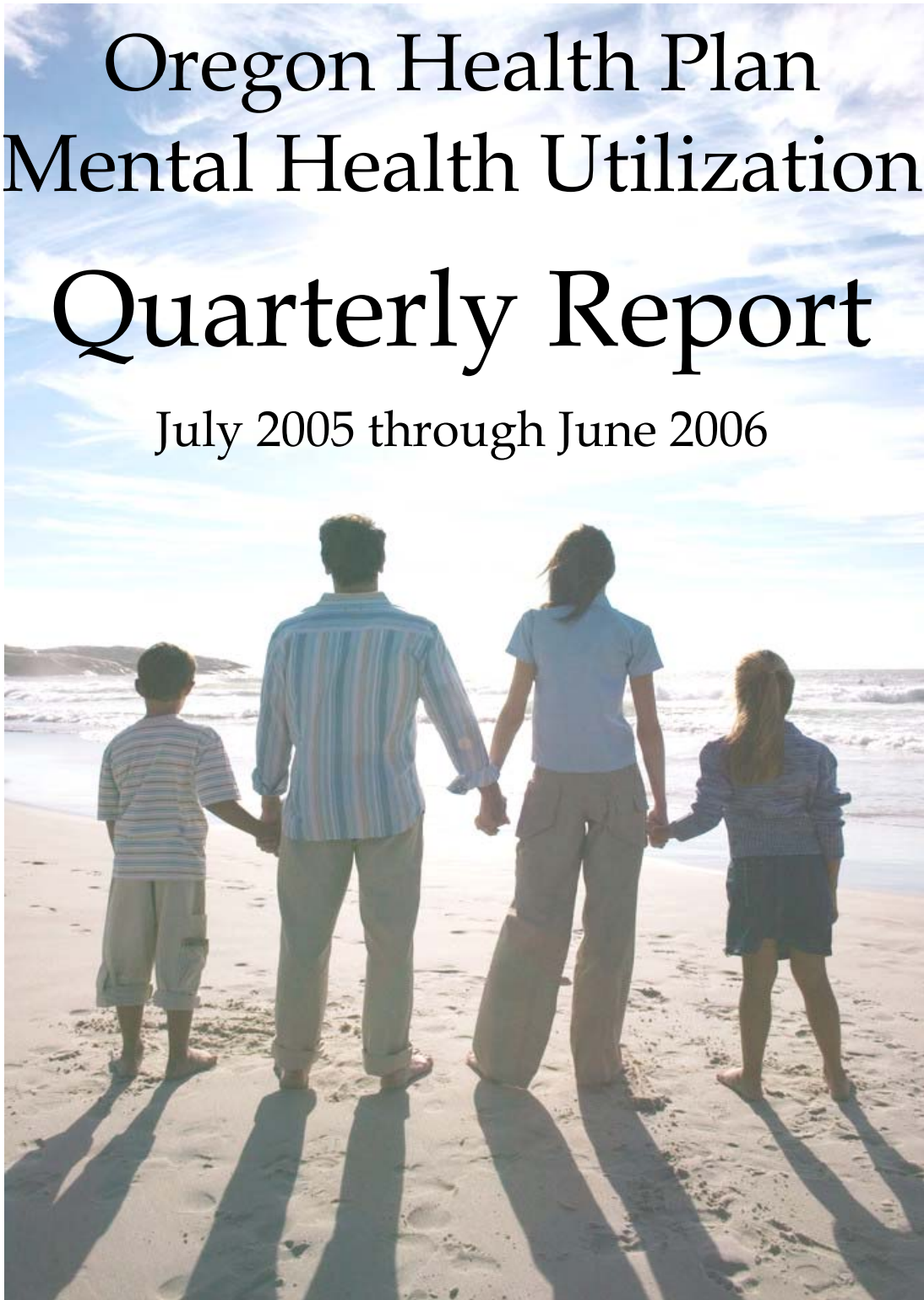


Department of Human Services
Addictions and Mental Health Division

Oregon Health Plan Mental Health Utilization Quarterly Report

July 2005 through June 2006



Report Produced by
Program Analysis and Evaluation Team
FEBRUARY 2007

EXECUTIVE SUMMARY
REPORT ON OREGON HEALTH PLAN (OHP)
UTILIZATION AND ENROLLMENT FOR
MENTAL HEALTH SERVICES:
JULY 2005 THROUGH JUNE 2006

The Mental Health Organization (MHO) Utilization Quarterly Report for the period of July 1, 2005 through June 30, 2006, contains enrollment, unique served and hospitalization data. The data for this report were pulled January 16, 2007. All information came from the Division of Medical Assistance Programs' (DMAP) Decision Support/Surveillance and Utilization Review System (DSSURS) and is comparable to the report released in July 2006.

Population

- This report reflects only Medicaid members who are eligible, enrolled, and received mental health services.
- The acute care admission population is any enrolled Medicaid member who was admitted for inpatient psychiatric treatment.
- Those who are receiving mental health services and alcohol and drug treatment are included in this report.

Limitations

- This report does not include tests of the statistical significance of apparent differences among providers or across time periods.
- The report is a “snap-shot” in time for the specific report being created and is comparable to the report released in July 2006.
- Acute hospitalization data includes and is not limited to transfers from one facility to another and/or re-admitted within a 24-hour time frame.
- There is a 180-day lag between the times a service is delivered and the time the services is contractually required to be billed.

Formula

- The calculations for the unique enrollees and/or served is dividing the number of total enrollees by the number served within the same time period.
- The penetration rate, or percentage rate, is a general measure of access, but more related to utilization of services.

Report Schedule

This report is created on a quarterly basis.

TABLE OF CONTENTS

The format and contents are constructed as follows:

- Figures are used to illustrate trends in statewide data.
- Tables are used to summarize quarterly data at the MHO level. Some tables include FFS and All Eligibles.



Executive Summary	i
-------------------------	---

Enrollment Data:

Table 1: Unique Members Enrolled by MHO	1
Figure 1: Total Unique Members Enrolled by Age Groups	1
Table 2: Unique Members Enrolled by Age Groups/MHO	2
Enrollment Numbers per Month	3

Served Data:

Table 3: Unique Members Served by MHO and Percentage Rate	4
Figure 2: Total Unique Members Served by Age Groups	4
Table 4: Unique Served by MHO/Age Group and Percentage Rate	5
Figure 3: Total Unique Served by Ethnicity	6
Table 5: Unique Served by MHO/Ethnicity and Percentage Rate	6
Figure 4: Total All Quarters: Unique Encounters by Diagnostic Groups	9
Table 6: Unique Served Encounters by MHO/Diagnostic Groups	9
Unique Members Served per Month	10

Hospital Data:

Table 7: Unique Hospital Admissions per 1,000 Members Enrolled	11
Table 8: Unique Hospital Admissions: Age Groups per 1,000 Members Enrolled	11
Table 9: Average Hospital Days of Service	12
Table 10: Average Hospital Days by MHO/Age Group	13
Table 11: Percent of Hospital Re-Admission within 30 days	14
Table 12: Total Hospital Re-Admission within 180 days	14
Figure 5: Total Seen by Outpatient within 7 Days of Hospital Discharge	15
Table 13: Seen by Outpatient within 7 Days of Hospital Discharge	15

Glossaries:

MHO Utilization Report Glossary	16
Diagnostic Categories Glossary	18
Service Categories Glossary	21

ENROLLMENT DATA

- ❖ Enrolled: Eligible for OHP and enrolled in an MHO
- ❖ Eligibles: Both Enrolled and FFS
- ❖ Fee-For-Service (FFS): Eligible for OHP and NOT enrolled with an MHO (Open Card)



TABLE 1: UNIQUE MEMBERS ENROLLED BY MHO

MHO Contractors	2005				2006			
	3 rd Qtr	% Enrolled	4 th Qtr	% Enrolled	1 st Qtr	% Enrolled	2 nd Qtr	% Enrolled
ABHA	27,041	7.1%	26,955	7.1%	26,747	7.1%	26,876	7.1%
Clackamas	26,360	6.9%	26,275	7.0%	25,834	6.9%	25,904	6.9%
FamilyCare	11,821	3.1%	11,138	2.9%	10,987	2.9%	10,864	2.9%
GOBHI	31,630	8.3%	31,410	8.3%	31,747	8.4%	31,923	8.5%
JBH	66,327	17.5%	65,656	17.4%	65,352	17.4%	65,126	17.3%
LaneCare	35,976	9.5%	35,980	9.5%	35,701	9.5%	35,763	9.5%
MVBCN	72,641	19.1%	72,852	19.3%	72,696	19.3%	73,396	19.5%
Verity	74,370	19.6%	74,425	19.7%	73,986	19.7%	74,033	19.6%
Washington	33,539	8.8%	33,191	8.8%	32,976	8.8%	33,452	8.9%
Total Enrolled	379,705	100.0%	377,882	100.0%	376,026	100.0%	377,337	100.0%

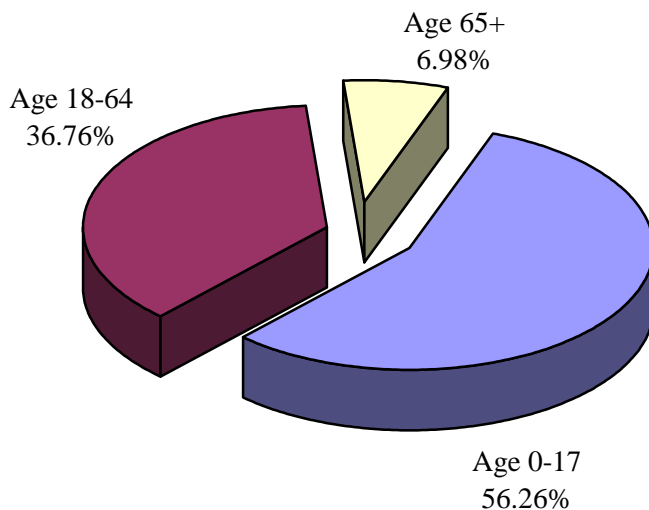
n=Unique Enrolled/d=Total Enrolled

	3 rd Qtr	% Enrolled	4 th Qtr	% Enrolled	1 st Qtr	% Enrolled	2 nd Qtr	% Enrolled
Total Enrolled	379,705	90.4%	377,882	90.1%	376,026	89.5%	377,337	90.2%
All Eligibles ²	420,161	100.0%	419,276	100.0%	420,181	100.0%	418,458	100.0%
FFS ³	40,456	9.6%	41,394	9.9%	44,155	10.5%	41,121	9.8%

n=Total Enrolled/d=All Eligibles

n=FFS/d=All Eligibles

FIGURE 1: TOTAL UNIQUE MEMBERS ENROLLED BY AGE GROUPS



² Eligibles: Both Enrolled and FFS

³ Fee-For-Service (FFS): Eligible for OHP and NOT enrolled with an MHO (Open Card)

TABLE 2: UNIQUE MEMBERS Enrolled¹ by Age Groups & Percentage by MHO Total

MHO Contractors	Age Groups	2005				2006			
		3 rd Qtr	% by MHO Qtr Total ²	4 th Qtr	% by MHO Qtr Total	1 st Qtr	% by MHO Qtr Total	2 nd Qtr	% by MHO Qtr Total
ABHA	0-17	14,949	55.3%	15,209	56.4%	15,311	57.2%	15,580	58.0%
	18-64	10,347	38.3%	9,982	37.0%	9,707	36.3%	9,588	35.7%
	65 +	1,745	6.5%	1,764	6.5%	1,729	6.5%	1,708	6.4%
Clackamas	0-17	14,899	56.5%	14,952	56.9%	14,889	57.6%	15,205	58.7%
	18-64	9,274	35.2%	9,136	34.8%	8,783	34.0%	8,556	33.0%
	65 +	2,187	8.3%	2,187	8.3%	2,162	8.4%	2,143	8.3%
FamilyCare	0-17	6,501	55.0%	6,200	55.7%	6,125	55.7%	6,134	56.5%
	18-64	4,956	41.9%	4,575	41.1%	4,470	40.7%	4,305	39.6%
	65 +	364	3.1%	363	3.3%	392	3.6%	425	3.9%
GOBHI	0-17	17,809	56.3%	17,887	56.9%	18,406	58.0%	18,763	58.8%
	18-64	11,501	36.4%	11,223	35.7%	11,063	34.8%	10,920	34.2%
	65 +	2,320	7.3%	2,300	7.3%	2,278	7.2%	2,240	7.0%
JBH	0-17	34,207	51.6%	34,515	52.6%	34,743	53.2%	35,190	54.0%
	18-64	27,511	41.5%	26,556	40.4%	26,083	39.9%	25,513	39.2%
	65 +	4,609	6.9%	4,585	7.0%	4,526	6.9%	4,423	6.8%
LaneCare	0-17	18,386	51.1%	18,666	51.9%	18,757	52.5%	19,034	53.2%
	18-64	15,614	43.4%	15,318	42.6%	14,983	42.0%	14,801	41.4%
	65 +	1,976	5.5%	1,996	5.5%	1,961	5.5%	1,928	5.4%
MVBCN	0-17	43,019	59.2%	43,651	59.9%	44,025	60.6%	45,072	61.4%
	18-64	25,227	34.7%	24,765	34.0%	24,268	33.4%	23,991	32.7%
	65 +	4,395	6.1%	4,436	6.1%	4,403	6.1%	4,333	5.9%
Verity	0-17	38,544	51.8%	39,234	52.7%	39,441	53.3%	40,078	54.1%
	18-64	29,453	39.6%	28,825	38.7%	28,208	38.1%	27,663	37.4%
	65 +	6,373	8.6%	6,366	8.6%	6,337	8.6%	6,292	8.5%
Washington	0-17	21,063	62.8%	20,982	63.2%	21,036	63.8%	21,593	64.5%
	18-64	9,923	29.6%	9,639	29.0%	9,376	28.4%	9,297	27.8%
	65 +	2,553	7.6%	2,570	7.7%	2,564	7.8%	2,562	7.7%
Total by Quarter	0-17	209,377	55.1%	211,296	55.9%	212,733	56.6%	216,649	57.4%
	18-64	143,806	37.9%	140,019	37.1%	136,941	36.4%	134,634	35.7%
	65 +	26,522	7.0%	26,567	7.0%	26,352	7.0%	26,054	6.9%

¹ Enrolled: Eligible for OHP and enrolled in an MHO² Percentage formula: n=unique enrolled by age group/d=MHO total enrolled

ENROLLMENT NUMBERS PER MONTH

MHO Contractor	Jul-05	Aug-05	Sep-05	Oct-05	Nov-05	Dec-05	Jan-06	Feb-06	Mar-06	Apr-06	May-06	Jun-06
ABHA	24,147	23,799	23,835	23,652	23,424	23,589	23,653	23,902	23,914	23,902	23,809	23,867
Clackamas	23,318	23,383	23,363	23,111	23,030	23,206	22,886	22,706	22,733	22,795	22,891	22,925
FamilyCare	10,468	10,263	10,086	9,898	9,532	9,428	9,407	9,437	9,382	9,290	9,359	9,390
GOBHI	28,190	27,947	27,797	27,688	27,813	28,176	28,099	28,467	28,296	28,516	28,477	28,485
JBH	59,484	58,725	59,226	57,535	57,962	58,949	58,506	58,693	58,370	58,601	58,373	58,736
LaneCare	32,474	32,400	32,217	32,033	32,398	32,404	32,175	32,399	31,963	32,227	32,228	32,373
MVBCN	64,720	64,551	64,671	65,084	65,127	65,373	65,232	65,404	65,137	65,880	65,677	66,182
Verity	67,329	67,085	67,445	67,254	67,132	67,512	67,267	67,233	66,801	66,604	66,409	67,245
Washington	29,466	29,204	29,348	29,118	28,868	29,005	29,165	29,133	28,946	29,290	29,232	29,668
Monthly Totals	339,596	337,357	337,988	335,373	335,286	337,642	336,390	337,374	335,542	337,105	336,455	338,871

% Monthly Increase/Decrease	-0.66%	0.19%	-0.78%	-0.03%	0.70%	-0.37%	0.29%	-0.55%	0.46%	-0.19%	0.71%
-----------------------------	--------	-------	--------	--------	-------	--------	-------	--------	-------	--------	-------

Eligibles	421,516	422,363	416,604	420,774	418,814	418,241	419,636	419,547	421,360	419,476	419,057	416,840
FFS	81,920	85,006	78,616	85,401	83,528	80,599	83,246	82,173	85,818	82,371	82,602	77,969

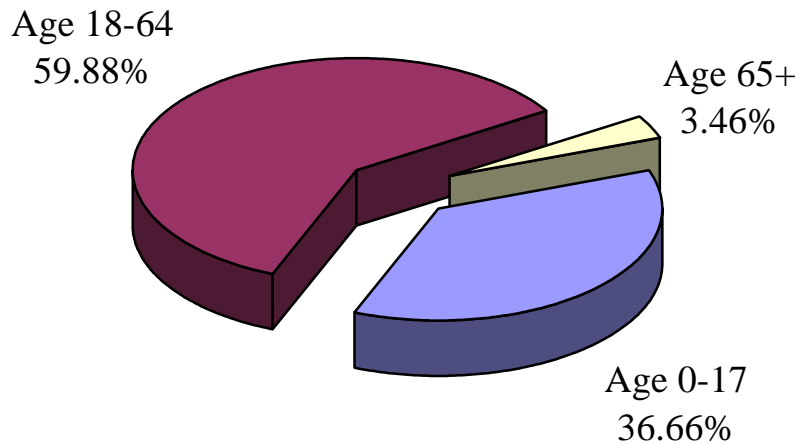
SERVICE DATA



TABLE 3: UNIQUE MEMBERS SERVED BY MHO AND PERCENTAGE RATE²

MHO Contractors	2005				2006			
	3 rd Qtr	% Rate	4 th Qtr	% Rate	1 st Qtr	% Rate	2 nd Qtr	% Rate
ABHA	1,709	6.3%	1,725	6.4%	1,466	5.5%	1,352	5.0%
Clackamas	1,712	6.5%	1,754	6.7%	1,797	7.0%	1,790	6.9%
FamilyCare	706	6.0%	532	4.8%	566	5.2%	511	4.7%
GOBHI	2,080	6.6%	2,131	6.8%	2,175	6.9%	2,235	7.0%
JBH	4,470	6.7%	4,421	6.7%	4,543	7.0%	4,544	7.0%
LaneCare	3,738	10.4%	3,807	10.6%	3,826	10.7%	3,899	10.9%
MVBCN	5,237	7.2%	4,943	6.8%	4,993	6.9%	4,913	6.7%
Verity	6,637	8.9%	6,116	8.2%	6,136	8.3%	6,378	8.6%
Washington	1,348	4.0%	2,087	6.3%	2,253	6.8%	2,409	7.2%
Total Served	27,637	7.3%	27,516	7.3%	27,755	7.4%	28,031	7.4%
FFS	1,119	2.8%	755	1.8%	761	1.7%	770	1.9%

FIGURE 2: TOTAL UNIQUE MEMBERS SERVED BY AGE GROUPS



² Percentage Rate Formula: $n = \text{Unique Served} / d = \text{Unique Enrolled}$.

Data Source: DSSURS – Data pulled: 1/16/07

C:\MHO Utilization Databases\Quarterly Pulls\Contract 0106-1206\0705-0606 - pulled 1-16-07\0705-0606 Qtr Report.doc

TABLE 4: UNIQUE¹ SERVED BY MHO/AGE GROUP AND PERCENTAGE² RATE

MHO Contractors	Age Groups	2005				2006			
		3 rd Qtr	Rate	4 th Qtr	Rate	1 st Qtr	Rate	2 nd Qtr	Rate
ABHA	0-17	576	3.9%	639	4.2%	586	3.8%	511	3.3%
	18-64	1,080	10.4%	1,036	10.4%	843	8.7%	807	8.4%
	65+	53	3.0%	50	2.8%	37	2.1%	34	2.0%
Clackamas	0-17	555	3.7%	596	4.0%	638	4.3%	705	4.6%
	18-64	1,100	11.9%	1,100	12.0%	1,107	12.6%	1,044	12.2%
	65+	57	2.6%	58	2.7%	52	2.4%	41	1.9%
FamilyCare	0-17	232	3.6%	219	3.5%	235	3.8%	242	3.9%
	18-64	469	9.5%	311	6.8%	329	7.4%	266	6.2%
	65+	5	1.4%	2	0.6%	2	0.5%	3	0.7%
GOBHI	0-17	757	4.3%	818	4.6%	887	4.8%	963	5.1%
	18-64	1,249	10.9%	1,240	11.0%	1,216	11.0%	1,203	11.0%
	65+	74	3.2%	73	3.2%	72	3.2%	69	3.1%
JBH	0-17	1,373	4.0%	1,517	4.4%	1,676	4.8%	1,810	5.1%
	18-64	2,987	10.9%	2,785	10.5%	2,763	10.6%	2,652	10.4%
	65+	110	2.4%	119	2.6%	104	2.3%	82	1.9%
LaneCare	0-17	1,311	7.1%	1,459	7.8%	1,535	8.2%	1,563	8.2%
	18-64	2,357	15.1%	2,275	14.9%	2,227	14.9%	2,273	15.4%
	65+	70	3.5%	73	3.7%	64	3.3%	63	3.3%
MVBCN	0-17	1,934	4.5%	1,897	4.3%	2,011	4.6%	2,032	4.5%
	18-64	3,101	12.3%	2,866	11.6%	2,821	11.6%	2,730	11.4%
	65+	202	4.6%	180	4.1%	161	3.7%	151	3.5%
Verity	0-17	2,142	5.6%	1,949	5.0%	2,162	5.5%	2,347	5.9%
	18-64	4,110	14.0%	3,819	13.2%	3,658	13.0%	3,707	13.4%
	65+	385	6.0%	348	5.5%	316	5.0%	324	5.1%
Washington	0-17	318	1.5%	715	3.4%	847	4.0%	913	4.2%
	18-64	946	9.5%	1,264	13.1%	1,302	13.9%	1,387	14.9%
	65+	84	3.3%	108	4.2%	104	4.1%	109	4.3%
Total Served	0-17	9,198	4.4%	9,809	4.6%	10,577	5.0%	11,086	5.1%
	18-64	17,399	12.1%	16,696	11.9%	16,266	11.9%	16,069	11.9%
	65+	1,040	3.9%	1,011	3.8%	912	3.5%	876	3.4%

¹ Unique Served: All duplicate records are removed.

² Percentage Rate Formula: n=Unique Served/d=Unique Enrolled.

Data Source: DSSURS – Data Pulled: 1/16/07

C:\MHO Utilization Databases\Quarterly Pulls\Contract 0106-1206\0705-0606 - pulled 1-16-07\0705-0606 Qtr Report.doc

FIGURE 3: TOTAL UNIQUE¹ SERVED BY ETHNICITY

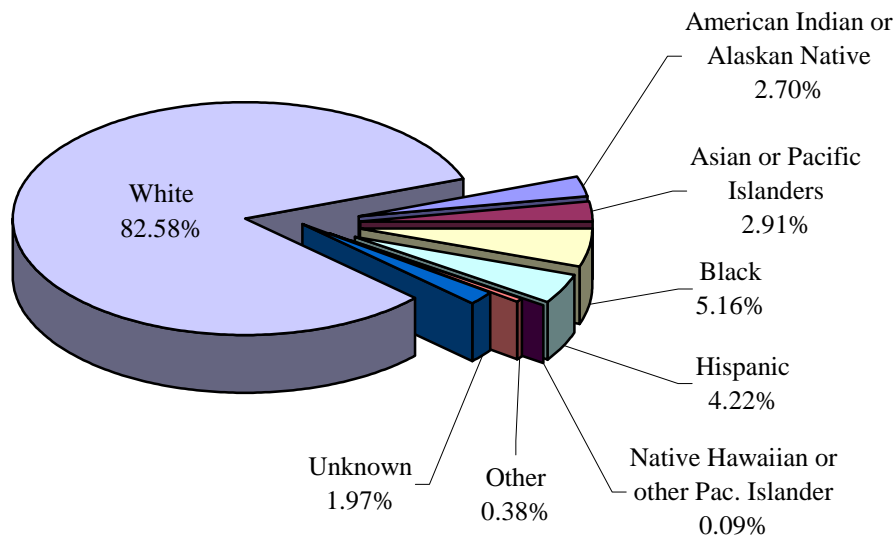


TABLE 5: UNIQUE SERVED BY MHO/ETHNICITY AND PERCENTAGE² RATE

MHO	Race Description	2005				2006			
		3 rd Qtr	Rate	4 th Qtr	Rate	1 st Qtr	Rate	2 nd Qtr	Rate
ABHA	Am. Indian/Alaskan Ntv	34	2.9%	26	2.5%	22	2.2%	24	2.3%
	Asian or Pacific Islanders	6	2.5%	6	2.4%	5	2.0%	5	2.0%
	Black	26	8.9%	22	7.0%	16	4.9%	15	4.6%
	Hispanic	38	1.2%	43	1.3%	50	1.5%	41	1.2%
	Ntv Hawaiian/Pac. Islander	0	0.0%	0	0.0%	1	3.1%	1	2.5%
	Other	6	5.4%	7	6.3%	5	4.9%	5	5.1%
	Unknown	22	13.7%	30	17.9%	30	17.8%	23	13.4%
	White	1,577	7.2%	1,591	7.3%	1,337	6.2%	1,238	5.7%
Clackamas	Am. Indian/Alaskan Ntv	21	5.1%	28	7.0%	31	7.8%	30	7.4%
	Asian or Pacific Islanders	19	3.9%	20	4.0%	20	3.9%	25	5.2%
	Black	31	5.9%	31	5.6%	33	6.2%	36	6.8%
	Hispanic	72	1.4%	63	1.3%	63	1.3%	87	1.7%
	Ntv Hawaiian/Pac. Islander	2	4.4%	3	5.7%	3	5.0%	4	7.7%
	Other	4	3.3%	4	3.3%	4	3.1%	5	4.0%
	Unknown	17	9.2%	19	9.4%	20	10.1%	23	11.3%
	White	1,546	7.9%	1,586	8.1%	1,623	8.5%	1,580	8.3%

¹ Unique Served: All duplicate records are removed.

² Percentage Rate Formula: n=Unique Served/d=Unique Enrolled.

Data Source: DSSURS – Data Pulled: 1/16/07

C:\MHO Utilization Databases\Quarterly Pulls\Contract 0106-1206\0705-0606 - pulled 1-16-07\0705-0606 Qtr Report.doc

**TABLE 5: UNIQUE¹ SERVED BY MHO/ETHNICITY AND PERCENTAGE² RATE
(continued)**

MHO	Race Description	2005				2006			
		3 rd Qtr	Rate	4 th Qtr	Rate	1 st Qtr	Rate	2 nd Qtr	Rate
FamilyCare	Am. Indian/Alaskan Ntv	22	11.7%	20	11.6%	12	7.3%	15	8.5%
	Asian or Pacific Islanders	38	5.3%	26	3.9%	27	4.2%	8	1.2%
	Black	66	5.1%	48	3.8%	48	4.0%	47	4.3%
	Hispanic	19	1.5%	24	2.0%	19	1.6%	15	1.2%
	Ntv Hawaiian/Pac. Islander	0	0.0%	0	0.0%	0	0.0%	0	0.0%
	Other	3	2.6%	3	3.1%	0	0.0%	0	0.0%
	Unknown	7	10.4%	8	11.0%	7	10.4%	5	7.6%
	White	551	6.8%	403	5.3%	453	6.0%	421	5.6%
GOBHI	Am. Indian/Alaskan Ntv	54	6.7%	65	8.2%	58	7.2%	64	7.9%
	Asian or Pacific Islanders	6	3.2%	11	5.9%	11	6.1%	10	5.7%
	Black	18	5.8%	21	6.8%	23	7.3%	19	6.0%
	Hispanic	154	2.3%	149	2.3%	153	2.3%	155	2.2%
	Ntv Hawaiian/Pac. Islander	1	2.4%	1	2.4%	0	0.0%	2	4.1%
	Other	5	4.5%	5	5.5%	5	6.0%	7	7.9%
	Unknown	53	19.4%	40	14.9%	48	16.3%	47	16.4%
	White	1,789	7.7%	1,839	7.9%	1,877	8.0%	1,931	8.3%
JBH	Am. Indian/Alaskan Ntv	142	6.9%	141	6.9%	141	6.8%	146	7.0%
	Asian or Pacific Islanders	15	4.5%	11	3.2%	16	4.7%	15	4.5%
	Black	51	7.7%	43	6.4%	53	7.8%	58	8.5%
	Hispanic	124	2.2%	131	2.3%	151	2.6%	142	2.5%
	Ntv Hawaiian/Pac. Islander	4	4.3%	4	4.3%	4	4.3%	4	3.8%
	Other	18	7.9%	9	4.0%	12	5.4%	12	5.7%
	Unknown	82	12.3%	82	11.7%	105	14.8%	112	15.4%
	White	4,034	7.1%	4,000	7.2%	4,061	7.3%	4,055	7.3%
LaneCare	Am. Indian/Alaskan Ntv	71	10.8%	63	9.6%	67	10.1%	78	11.8%
	Asian or Pacific Islanders	27	5.5%	27	5.4%	28	5.6%	30	6.1%
	Black	94	10.9%	93	10.5%	97	10.9%	101	11.3%
	Hispanic	99	3.5%	102	3.5%	109	3.7%	108	3.7%
	Ntv Hawaiian/Pac. Islander	0	0.0%	2	7.7%	1	2.9%	1	2.6%
	Other	18	9.0%	18	9.4%	19	10.2%	18	9.2%
	Unknown	114	25.2%	121	24.7%	127	25.4%	132	25.1%
	White	3,315	10.9%	3,381	11.1%	3,378	11.3%	3,431	11.4%

¹ Unique Served: All duplicate records are removed.

² Percentage Rate Formula: n=Unique Served/d=Unique Enrolled.

Data Source: DSSURS – Data Pulled: 1/16/07

C:\MHO Utilization Databases\Quarterly Pulls\Contract 0106-1206\0705-0606 - pulled 1-16-07\0705-0606 Qtr Report.doc

TABLE 5: UNIQUE¹ SERVED BY MHO/ETHNICITY AND PERCENTAGE² RATE
(continued)

MHO	Race Description	2005				2006			
		3 rd Qtr	Rate	4 th Qtr	Rate	1 st Qtr	Rate	2 nd Qtr	Rate
MVBCN	Am. Indian/Alaskan Ntv	128	10.3%	138	10.7%	135	11.1%	132	10.9%
	Asian or Pac. Islanders	54	5.9%	47	5.1%	47	5.0%	48	5.1%
	Black	108	10.9%	97	9.6%	87	8.5%	96	9.1%
	Hispanic	246	1.4%	240	1.3%	291	1.6%	319	1.7%
	Ntv Hawaiian/Pac. Islander	9	4.7%	10	5.2%	10	5.2%	13	6.3%
	Other	11	3.6%	13	4.4%	11	3.8%	14	5.2%
	Unknown	86	19.0%	79	16.2%	66	13.8%	67	14.1%
	White	4,595	9.1%	4,319	8.6%	4,346	8.7%	4,224	8.4%
Verity	Am. Indian/Alaskan Ntv	270	17.6%	240	16.1%	246	17.1%	232	15.8%
	Asian or Pacific Islanders	551	9.5%	519	9.0%	513	8.9%	544	9.6%
	Black	1,016	8.3%	934	7.6%	927	7.5%	971	7.8%
	Hispanic	232	2.0%	201	1.7%	231	2.0%	254	2.1%
	Ntv Hawaiian/Pac. Islander	0	0.0%	2	1.5%	3	2.0%	2	1.3%
	Other	27	4.6%	24	4.1%	33	6.1%	31	5.6%
	Unknown	88	16.6%	98	17.9%	101	18.2%	84	14.6%
	White	4,453	10.6%	4,098	9.8%	4,082	9.9%	4,260	10.4%
Washington	Am. Indian/Alaskan Ntv	11	4.2%	29	12.2%	30	11.8%	29	10.3%
	Asian or Pacific Islanders	117	5.9%	122	6.0%	128	6.4%	128	6.5%
	Black	66	4.2%	96	6.0%	114	7.5%	121	7.8%
	Hispanic	72	0.7%	136	1.3%	166	1.5%	184	1.6%
	Ntv Hawaiian/Pac. Islander	1	1.4%	3	2.9%	3	2.8%	4	3.2%
	Other	11	3.8%	17	6.1%	19	7.2%	16	5.6%
	Unknown	18	5.0%	62	17.6%	75	21.4%	82	23.2%
	White	1,052	5.8%	1,622	9.1%	1,718	9.8%	1,845	10.6%
Total Served	Am. Indian/Alaskan Ntv	753	9.0%	750	9.2%	742	9.2%	750	9.2%
	Asian or Pacific Islanders	833	7.5%	789	7.1%	795	7.1%	813	7.4%
	Black	1,476	7.8%	1,385	7.3%	1,398	7.4%	1,464	7.8%
	Hispanic	1,056	1.6%	1,089	1.7%	1,233	1.9%	1,305	1.9%
	Ntv Hawaiian/Pac. Islander	17	2.7%	25	3.5%	25	3.4%	31	3.8%
	Other	103	5.0%	100	5.0%	108	5.6%	108	5.7%
	Unknown	487	15.5%	539	16.4%	579	17.4%	575	17.0%
	White	22,912	8.5%	22,839	8.5%	22,875	8.6%	22,985	8.7%

¹ Unique Served: All duplicate records are removed.² Percentage Rate Formula: n=Unique Served/d=Unique Enrolled.

Data Source: DSSURS – Data Pulled: 1/16/07

C:\MHO Utilization Databases\Quarterly Pulls\Contract 0106-1206\0705-0606 - pulled 1-16-07\0705-0606 Qtr Report.doc

FIGURE 4: TOTAL ALL QUARTERS: UNIQUE ENCOUNTERS BY DIAGNOSTIC GROUPS

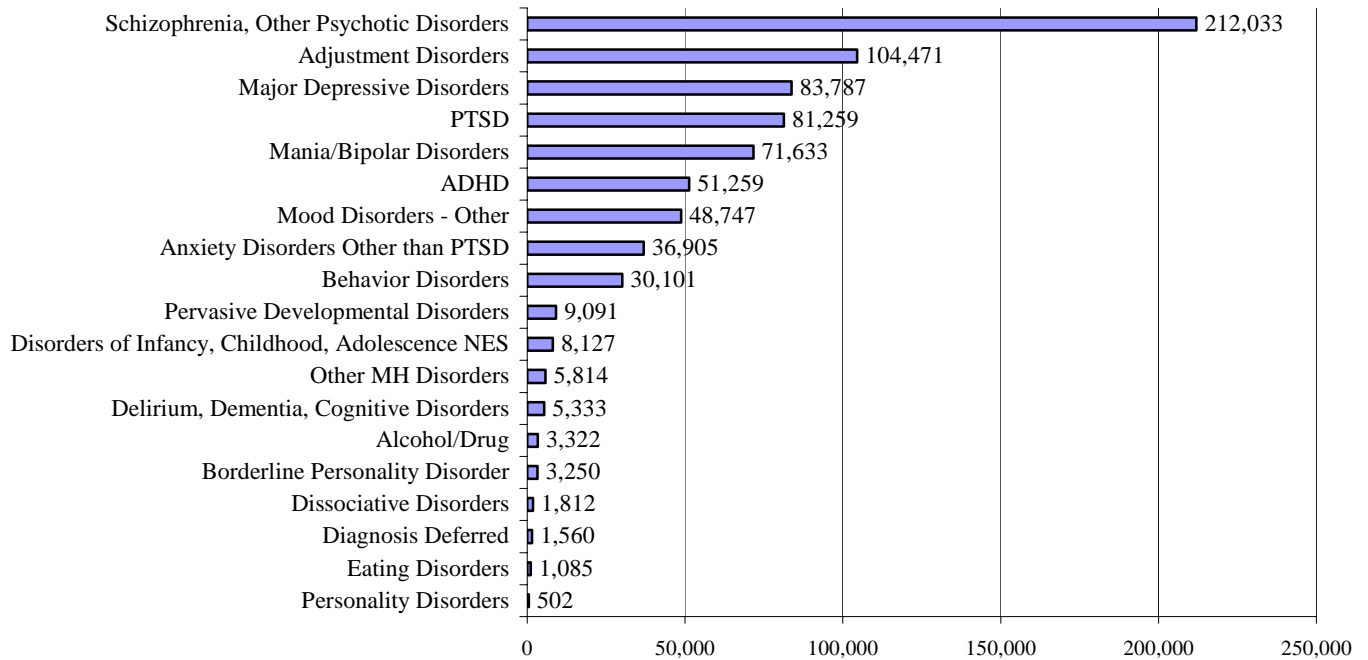


TABLE 6: UNIQUE¹ SERVED ENCOUNTERS² BY MHO/DIAGNOSTIC GROUPS IN ASCENDING ORDER BASED ON THE THIRD QUARTER

MHO Contractors	Diagnostic Group	2005		2006	
		3 rd Qtr	4 th Qtr	1 st Qtr	2 nd Qtr
Total Encounters	Schizophrenia, Other Psychotic Disorders	54,660	52,667	53,564	51,142
	Adjustment Disorders	22,548	24,636	28,187	29,100
	PTSD	17,573	19,174	21,523	22,989
	Major Depressive Disorders	20,735	20,689	20,852	21,511
	Mania/Bipolar Disorders	17,648	18,231	17,924	17,830
	ADHD	10,412	12,344	14,188	14,315
	Mood Disorders - Other	11,132	11,416	12,607	13,592
	Anxiety Disorders Other than PTSD	8,903	8,923	9,640	9,439
	Behavior Disorders	5,991	7,197	7,770	9,143
	Disorders of Infancy, Childhood, Adolescence NES	1,336	1,842	2,346	2,603
	Pervasive Developmental Disorders	1,923	2,133	2,468	2,567
	Delirium, Dementia, Cognitive Disorders	1,157	1,299	1,425	1,452
	Other MH Disorders	1,976	1,585	1,131	1,122
	Borderline Personality Disorder	918	810	784	738
	Alcohol/Drug	1,197	787	686	652
	Dissociative Disorders	552	412	390	458
	Diagnosis Deferred	577	474	215	294
	Eating Disorders	138	149	610	188
Personality Disorders	181	121	118	82	

¹ Unique Served: All duplicate records are removed.

² Encounters: A contact or admission for covered services to OHP Member – can be 1 or more per member.

Data Source: DSSURS – Data Pulled: 1/16/07

C:\MHO Utilization Databases\Quarterly Pulls\Contract 0106-1206\0705-0606 - pulled 1-16-07\0705-0606 Qtr Report.doc

UNIQUE MEMBERS SERVED PER MONTH

MHO Contractors	Jul-05	Aug-05	Sep-05	Oct-05	Nov-05	Dec-05	Jan-06	Feb-06	Mar-06	Apr-06	May-06	Jun-06
ABHA	1,142	800	1,158	1,211	1,167	759	949	1,015	1,019	911	933	908
Clackamas	1,130	1,179	1,131	1,193	1,174	1,174	1,217	1,208	1,255	1,220	1,194	1,179
FamilyCare	432	466	434	351	360	315	369	330	359	330	324	322
GOBHI	1,285	1,432	1,376	1,469	1,480	1,375	1,484	1,445	1,493	1,537	1,466	1,470
JBH	3,003	2,982	2,822	3,092	3,025	2,861	3,142	3,057	3,246	3,119	3,289	2,885
LaneCare	2,570	2,720	2,638	2,797	2,870	2,743	2,873	2,852	2,948	2,926	3,046	2,953
MVBCN	3,500	3,648	3,482	3,468	3,448	3,458	3,432	3,401	3,582	3,408	3,337	3,403
Verity	4,621	4,703	4,703	4,444	4,300	4,008	4,232	4,157	4,486	4,387	4,657	4,566
Washington	818	793	864	1,406	1,455	1,397	1,552	1,449	1,650	1,664	1,658	1,664
Total	18,501	18,723	18,608	19,431	19,279	18,090	19,250	18,914	20,038	19,502	19,904	19,350
FFS	803	836	841	554	547	537	564	543	551	542	554	548

HOSPITAL DATA



TABLE 7: UNIQUE¹ HOSPITAL ADMISSIONS PER 1,000 MEMBERS² ENROLLED

MHO Contractors	2005		2006	
	3 rd Qtr	4 th Qtr	1 st Qtr	2 nd Qtr
ABHA	0.89	0.30	0.41	1.12
Clackamas	2.05	1.79	1.55	1.39
FamilyCare	1.86	2.07	3.37	3.04
GOBHI	0.82	0.51	0.41	0.00
JBH	2.32	2.22	2.28	2.36
LaneCare	2.28	3.45	2.94	2.85
MVBCN	0.51	0.81	0.88	0.94
Verity	3.09	3.75	2.46	2.89
Washington	2.77	2.32	2.40	2.45
Totals	1.90	2.06	1.81	1.91

(n=Total Admissions/d=Unique Enrolled per 1,000 members)

TABLE 8: UNIQUE HOSPITAL ADMISSIONS: AGE GROUPS PER 1,000 MEMBERS ENROLLED

MHO Contractors	Age Group	2005		2006	
		3 rd Qtr	4 th Qtr	1 st Qtr	2 nd Qtr
ABHA	0-17	0.3	0.0	0.1	0.4
	18-64	1.8	0.8	0.9	2.4
	65+	0.6	0.0	0.6	0.0
Clackamas	0-17	0.1	0.3	0.8	0.2
	18-64	5.4	4.5	3.0	3.6
	65+	0.9	0.9	0.9	0.9
FamilyCare	0-17	0.5	0.3	0.5	1.5
	18-64	3.8	4.6	7.6	5.6
	65+	0.0	0.0	0.0	0.0
GOBHI	0-17	0.1	0.2	0.2	0.0
	18-64	2.0	1.2	0.9	0.0
	65+	0.4	0.0	0.0	0.0
JBH	0-17	0.9	0.7	0.9	0.9
	18-64	4.5	4.5	4.5	4.7
	65+	0.2	0.4	0.2	0.2

(n=Total Admissions/d=Unique Enrolled per 1,000 members)

*Low admission/re-admission numbers can be due to changes in the data submission requirements on January 1, 2006.

¹ Unique: All duplicate records are removed.

² Per 1,000 members is the unique number enrolled divided by 1,000

TABLE 8: UNIQUE¹ HOSPITAL ADMISSIONS BY AGE GROUPS PER 1,000 MEMBERS² ENROLLED (*continued*)

MHO Contractors	Age Group	2005		2006	
		3 rd Qtr	4 th Qtr	1 st Qtr	2 nd Qtr
LaneCare	0-17	0.2	0.3	0.3	0.4
	18-64	4.6	7.1	5.9	5.8
	65+	3.5	4.5	5.1	4.1
MVBCN	0-17	0.1	0.2	0.2	0.2
	18-64	1.2	2.0	2.2	2.1
	65+	0.7	0.5	0.7	1.8
Verity	0-17	0.9	0.6	0.6	0.9
	18-64	6.4	8.7	5.5	6.1
	65+	0.9	0.9	0.8	1.0
Washington	0-17	0.7	0.7	0.7	0.8
	18-64	7.4	6.1	6.9	6.9
	65+	2.4	1.6	0.0	0.0
Total	0-17	0.5	0.4	0.5	0.6
	18-64	4.2	4.8	4.1	4.2
	65+	1.0	0.9	0.8	1.0

(n=Total Admissions/d=Unique Enrolled per 1,000 members)

TABLE 9: AVERAGE HOSPITAL DAYS OF SERVICE

MHO Contractors	2005		2006	
	3 rd Qtr	4 th Qtr	1 st Qtr	2 nd Qtr
ABHA	7.9	3.0	4.1	11.9
Clackamas	13.7	9.9	13.6	11.7
FamilyCare	6.6	8.0	8.2	8.3
GOBHI	11.0	8.4	6.4	0.0
JBH	6.0	4.8	5.7	5.5
LaneCare	11.8	8.3	8.1	8.7
MVBCN	13.0	10.5	10.3	10.6
Verity	10.3	8.4	7.1	9.3
Washington	8.4	8.3	9.4	7.9
Total	9.5	7.9	7.9	8.5

(n=Sum Days of Service/d=Total Discharges)

*Low admission/re-admission numbers can be due to changes in the data submission requirements on January 1, 2006.

¹ Unique: All duplicated records are removed

² Per 1,000 members is the unique number enrolled divided by 1,000

TABLE 10: AVERAGE HOSPITAL DAYS BY MHO/AGE GROUP

MHO Contractors	Age Groups	2005		2006	
		3 rd Qtr	4 th Qtr	1 st Qtr	2 nd Qtr
ABHA	0-17	4.8	0.0	0.0	20.4
	18-64	5.9	3.9	4.3	11.2
	65+	6.0	0.0	0.0	0.0
Clackamas	0-17	4.3	6.3	5.8	5.3
	18-64	13.0	10.5	16.7	12.6
	65+	16.5	7.5	3.5	5.5
FamilyCare	0-17	5.0	4.5	14.0	7.4
	18-64	4.8	8.5	10.6	6.5
	65+	0.0	0.0	0.0	0.0
GOBHI	0-17	4.0	10.0	9.0	0.0
	18-64	8.2	8.0	5.6	0.0
	65+	7.0	0.0	0.0	0.0
JBH	0-17	6.9	7.7	7.2	7.1
	18-64	5.6	4.3	5.2	5.2
	65+	0.5	12.0	10.0	2.0
LaneCare	0-17	4.5	8.0	7.1	9.4
	18-64	12.5	6.7	7.4	8.6
	65+	17.5	31.1	4.5	13.6
MVBCN	0-17	10.0	7.7	8.3	11.7
	18-64	11.6	10.1	11.6	11.3
	65+	14.7	10.5	11.0	12.7
Verity	0-17	8.5	6.6	6.3	7.5
	18-64	10.0	7.6	7.7	8.4
	65+	18.7	20.6	7.8	15.6
Washington	0-17	7.1	6.1	7.5	8.6
	18-64	9.4	7.1	9.1	11.0
	65+	11.7	9.8	0.0	0.0
Totals	0-17	7.1	7.1	7.1	8.5
	18-64	9.2	7.2	8.1	8.5
	65+	14.2	19.1	6.0	12.8

(n=Sum Days of Service/d=Total Discharges)

*Low admission/re-admission numbers can be due to changes in the data submission requirements on January 1, 2006.

TABLE 11: PERCENT OF HOSPITAL RE-ADMISSION WITHIN 30 DAYS

MHO Contractors	2005		2006	
	3rd Qtr	4th Qtr	1st Qtr	2nd Qtr
ABHA	7.4%	0.0%	8.3%	11.1%
Clackamas	16.1%	6.5%	14.6%	11.4%
FamilyCare	8.0%	0.0%	32.3%	13.5%
GOBHI	3.3%	6.3%	7.7%	0.0%
JBH	11.3%	9.9%	10.5%	10.4%
LaneCare	8.3%	15.1%	19.3%	11.7%
MVBCN	2.7%	6.3%	9.7%	3.0%
Verity	8.9%	16.8%	10.9%	12.1%
Washington	8.0%	17.1%	22.2%	9.1%
Total	9.2%	13.0%	14.4%	10.5%

TABLE 12: TOTAL HOSPITAL RE-ADMISSION WITHIN 180 DAYS

MHO Contractors	2005		2006	
	3rd Qtr	4th Qtr	1st Qtr	2nd Qtr
ABHA	11.1%	0.0%	8.3%	22.2%
Clackamas	21.4%	21.7%	29.3%	28.6%
FamilyCare	8.0%	13.6%	45.2%	18.9%
GOBHI	3.3%	12.5%	15.4%	0.0%
JBH	13.8%	23.2%	28.9%	31.2%
LaneCare	13.1%	25.2%	33.0%	29.1%
MVBCN	5.4%	10.9%	16.1%	12.1%
Verity	10.3%	25.4%	29.7%	27.9%
Washington	10.2%	28.0%	40.7%	26.0%
Total	11.6%	23.0%	30.2%	26.5%

*Low admission/re-admission numbers can be reflected due to changes in the data submission requirements on January 1, 2006.

FIGURE 5: TOTAL SEEN BY OUTPATIENT WITHIN 7 DAYS OF HOSPITAL DISCHARGE
 (All re-admissions are included in the hospital discharge numbers. All Mental Health Diagnosis is included in the outpatient numbers.)

(n=number seen within 7 days/ d= hospital discharges.)

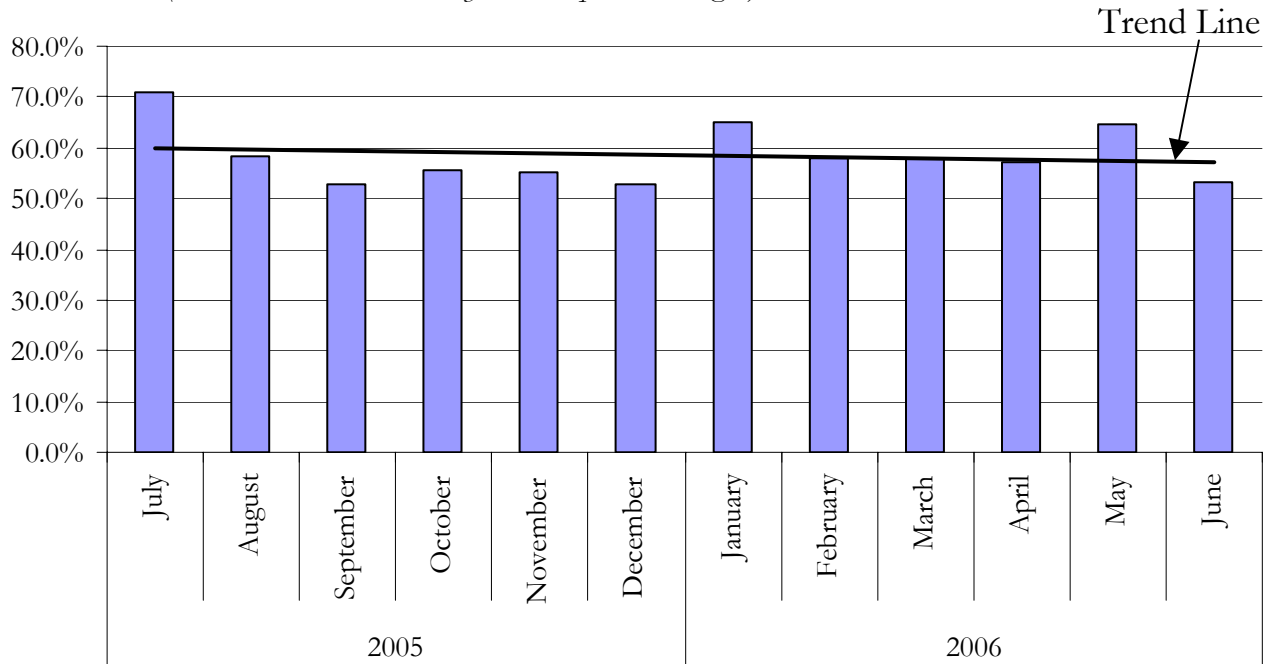


TABLE 13: SEEN BY OUTPATIENT WITHIN 7 DAYS OF HOSPITAL DISCHARGE
 (All re-admissions are included in the hospital discharge numbers. All mental health diagnosis is included in the outpatient numbers).

MHO Contractors	2005		2006	
	2 nd Qtr	3 rd Qtr	4 th Qtr	1 st Qtr
ABHA	66.7%	42.9%	66.7%	66.7%
Clackamas	67.9%	56.5%	75.6%	54.3%
FamilyCare	48.0%	31.8%	16.1%	16.2%
GOBHI	40.0%	43.8%	61.5%	0.0%
JBH	57.5%	50.0%	70.4%	65.6%
LaneCare	61.9%	57.1%	49.5%	49.5%
MVBCN	51.4%	51.6%	53.2%	54.5%
Verity	64.3%	56.8%	55.2%	59.5%
Washington	48.9%	50.0%	69.1%	59.7%
Total	58.8%	53.3%	58.9%	56.7%

(n=Seen Within 7 days/d=Hospital Discharges) *Low admission/re-admission numbers can be due to changes in the data submission requirements on January 1, 2006.

MHO UTILIZATION REPORT GLOSSARY

ADDICTIONS AND MENTAL HEALTH DIVISION (AMH):

The division office of DHS responsible for the administration of mental health services for the State of Oregon.

DIAGNOSIS CATEGORY:

Diagnosis categories are defined by the grouping of diagnoses in the most recent version of the American Psychiatric Association's Diagnostic and Statistical Manual (DSM).

ELIGIBLE:

An individual eligible for services under the OHP, but may not be enrolled into an MHO. Includes enrolled and fee-for-service.

ENCOUNTER:

An outpatient contact or Acute Inpatient Hospital Psychiatric Care admission for Covered Services provided to an OHP Member.

ENROLLED (ENROLLEE):

Eligible for the Oregon Health Plan (OHP) and enrolled in an MHO.

FEE-FOR-SERVICE (FFS):

Individuals who are eligible for the OHP, but are not enrolled with an MHO. This is also known as fee-for-service (FFS) or an "open card".

MENTAL HEALTH ORGANIZATION (MHO):

A Prepaid Health Plan under contract with DHS to provide Covered Services under the OHP Medicaid Demonstration Project and State Children's Health Insurance Program (SCHIP). MHOs can be FCHPs, CMHPs, or private MHOs or combinations thereof.

OREGON HEALTH PLAN (OHP):

Oregon's health care reform effort consisting of a Medicaid Demonstration Project, State Children's Health Insurance Program, an individual insurance program for persons excluded from health insurance coverage due to pre-existing health conditions, and a group insurance program for small businesses. One objective of this reform effort includes universal coverage for Oregonians. In the context of this report, OHP refers to all individuals on FFSMHO Utilization Report Glossary

MHO UTILIZATION REPORT GLOSSARY *(Continued)*

PERCENT ENROLLEES SERVED:

This is a general measure of access, but more related to utilization of services. It is a percentage calculated by summing the unique enrollees seen during a given time period and dividing that number by the total enrollees for that time period. For example, if there is 10,000 enrollees statewide in a given month and during that same month 500 of those enrollees receive services, the percent of enrollees served is 5%.

PERCENTAGE RATE:

Percent of enrollees served during a given time period.

SERVICE CATEGORY:

Service category is a descriptive grouping of service codes (BA, ECC, and CPT) that are similar procedurally.

UNIQUE SERVED:

Unduplicated number of individuals receiving mental health services.

UNIQUE ENCOUNTERS:

Unduplicated services received by an individual(s) within a specific time period. One individual may have had several services provided – each service would be part of the calculations.

DIAGNOSTIC CATEGORIES GLOSSARY WITH SPECIFIC DSMIV CODES

ADHD:

314.0; 314.00; 314.01; 314.1; 314.9

ADJUSTMENT DISORDERS:

309.00; 309.1; 309.2; 309.21; 309.22; 309.23; 309.24; 309.28; 309.29; 309.3; 309.4;
309.40; 309.82; 309.83; 309.89; 309.9

ALCOHOL/DRUG:

291.3; 291.4; 291.5; 291.81; 291.89; 291.9; 292.0; 292.11; 292.12; 292.2; 292.84;
292.9; 303.00; 303.01; 303.02; 303.90; 303.91; 303.93; 304.00; 304.01; 304.03;
304.10; 304.20; 304.23; 304.3; 304.30; 304.31; 304.32; 304.33; 304.40; 304.41;
304.42; 304.43; 304.70; 304.71; 304.80; 304.81; 304.83; 304.90; 305.00; 305.01;
305.02; 305.03; 305.1; 305.20; 305.21; 305.22; 305.40; 305.50; 305.60; 305.61;
305.62; 305.70; 305.71; 305.72; 305.73; 305.91

ANXIETY DISORDER OTHER THAN PTSD:

293.84; 300.0; 300.00; 300.01; 300.02; 300.09; 300.10; 300.20; 300.21; 300.22;
300.23; 300.29; 300.3; 308.3; 308.9

BEHAVIOR DISORDERS:

312.00; 312.01; 312.02; 312.30; 312.31; 312.32; 312.34; 312.39; 312.4; 312.8;
312.80; 312.81; 312.82; 312.89; 312.9; 313.69; 313.81

BORDERLINE PERSONALITY DISORDERS:

301.83

DELIRIUM, DEMENTIA, COGNITIVE DISORDERS:

290.0; 290.10; 290.11; 290.12; 290.13; 290.20; 290.21; 290.3; 290.40; 290.41;
290.42; 290.43; 291.0; 291.2; 292.82; 292.83; 292.89; 293.0; 294.0; 294.1; 294.10;
294.11; 294.8; 294.9; 294.90; 310.1; 310.10; 310.9

DIAGNOSIS DEFERRED:

799.9

DIAGNOSTIC CATEGORIES GLOSSARY
WITH SPECIFIC DSM-IV CODES
(*CONTINUED*)

DISORDERS OF INFANCY, CHILDHOOD, ADOLESCENCE NES:

299.10; 307.0; 307.20; 307.23; 307.3; 307.6; 307.7; 307.9; 313.23; 313.82; 313.89;
313.9; 315.00; 315.31; 315.32; 315.39; 315.4; 315.9; 317.0; 318.0; 318.1; 318.2;
318.81; 319.0; 787.6

DISSOCIATIVE DISORDERS:

300.12; 300.13; 300.14; 300.15; 300.6

EATING DISORDERS:

307.1; 307.50; 307.51; 307.52; 307.53; 307.59; 780.59

MAJOR DEPRESSIVE DISORDERS:

296.2; 296.20; 296.21; 296.22; 296.23; 296.24; 296.25; 296.26; 296.3; 296.30;
296.31; 296.32; 296.33; 296.34; 296.35; 296.36

MANIA/BIPOLAR DISORDERS:

296; 296.0; 296.00; 296.01; 296.02; 296.03; 296.04; 296.05; 296.06; 296.09; 296.10;
296.12; 296.13; 296.15; 296.4; 296.40; 296.41; 296.42; 296.43; 296.44; 296.45;
296.46; 296.50; 296.51; 296.52; 296.53; 296.54; 296.55; 296.56; 296.6; 296.60;
296.61; 296.62; 296.63; 296.64; 296.65; 296.66; 296.7; 296.70; 296.8; 296.80;
296.81; 296.82; 296.89; 296.9

MOOD DISORDERS WITHOUT BEHAVIOR, MANIA AND BIPOLAR:

293.83; 296.09; 296.82; 296.90; 296.99; 300.4; 300.40; 301.13; 309.1; 311; 311.0;
311.00

OTHER MENTAL HEALTH (MH) DISORDERS:

293.89; 293.9; 296.74; 300.11; 300.16; 300.19; 300.7; 300.81; 300.82; 300.9; 302.1;
302.2; 302.4; 302.70; 302.73; 302.9; 306.3; 307.42; 307.44; 307.45; 307.46; 307.47;
307.80; 307.89; 307.9; 308.0; 308.1; 308.2; 316; 968.9; 995.2; 995.50; 995.52;
995.53; 995.54; 995.59; 995.81; 995.83; V610; V611.0; V612.0; V612.1; V618;
V619; V628.1; V628.2; V628.9; V629; V654.0; V710.1; V710.2; V710.9; V829

PERSONALITY DISORDERS:

301.0; 301.12; 301.20; 301.22; 301.3; 301.4; 301.50; 301.6; 301.7; 301.81; 301.82;
301.84; 301.89; 301.9

DIAGNOSTIC CATEGORIES GLOSSARY
WITH SPECIFIC DSMIV CODES
(Continued)

PERVASIVE DEVELOPMENTAL DISORDERS:

299.0; 299.00; 299.80; 299.81; 299.90

POST-TRAUMATIC STRESS DISORDER (PTSD):

309.81

SCHIZOPHRENIA, OTHER PSYCHOTIC DISORDERS:

293.81; 293.82; 295.0; 295.00; 295.01; 295.02; 295.03; 295.10; 295.11; 295.12;
295.13; 295.14; 295.15; 295.20; 295.22; 295.23; 295.24; 295.3; 295.30; 295.31;
295.32; 295.33; 295.34; 295.35; 295.40; 295.42; 295.43; 295.44; 295.45; 295.50;
295.51; 295.52; 295.53; 295.54; 295.55; 295.60; 295.61; 295.62; 295.64; 295.65;
295.7; 295.70; 295.71; 295.72; 295.73; 295.74; 295.75; 295.80; 295.81; 295.82;
295.83; 295.84; 295.85; 295.9; 294.90; 295.91; 295.92; 295.93; 295.94; 295.95;
297.0; 297.1; 297.2; 297.3; 297.9; 298.0; 298.3; 298.8; 298.9; 298.90; 299.01

SERVICE CATEGORIES GLOSSARY WITH SPECIFIC PROCEDURES CODES

ALTERNATIVES TO INPATIENT HOSPITALIZATION:

H0035; H2013

ASSERTIVE COMMUNITY TREATMENT:

H0039

ASSESSMENT & EVALUATION:

90801; 90802; 96100; 99090; 99214; 99222; 99223; 99231; 99232; 99233; 99238;
99239; BA008; BA010; BA011; H0002; H0031; T1023

CASE MANAGEMENT:

99371; BA046; BA047; BA147; T1016

CONSULTATION:

90882; 90887; 99255; BA017

CRISIS INTERVENTION:

S9484

FAMILY THERAPY:

90846; 90849; BA013; BA016

GROUP THERAPY:

90853; 90857; BA015; BA115

ISA - AE:

H0018

ISA - DAY TREATMENT:

ECC13; H0037; H2012

ISA - MST:

H2033

ISA - RESIDENTIAL:

ECC11; H0019

**SERVICE CATEGORIES GLOSSARY WITH
SPECIFIC PROCEDURES CODES**
(Continued)

INDIVIDUAL THERAPY:

90804; 90805; 90806; 90807; 90808; 90809; 90810; 90811; 90812; 90813; 90814;
90815; BA011; BA111; H0004

INTERPRETIVE SERVICES:

T1013

MEDICATION MANAGEMENT:

90862; BA019; BA026; BA126; H0034; H2010

OTHER OUTPATIENT THERAPY:

90847; 90899; ECC50; H2021; H2022

RESPIRE CARE:

ECC20; H0045; S5151; S9125; T1005