



United States
Department of
Agriculture

**Forest
Service**

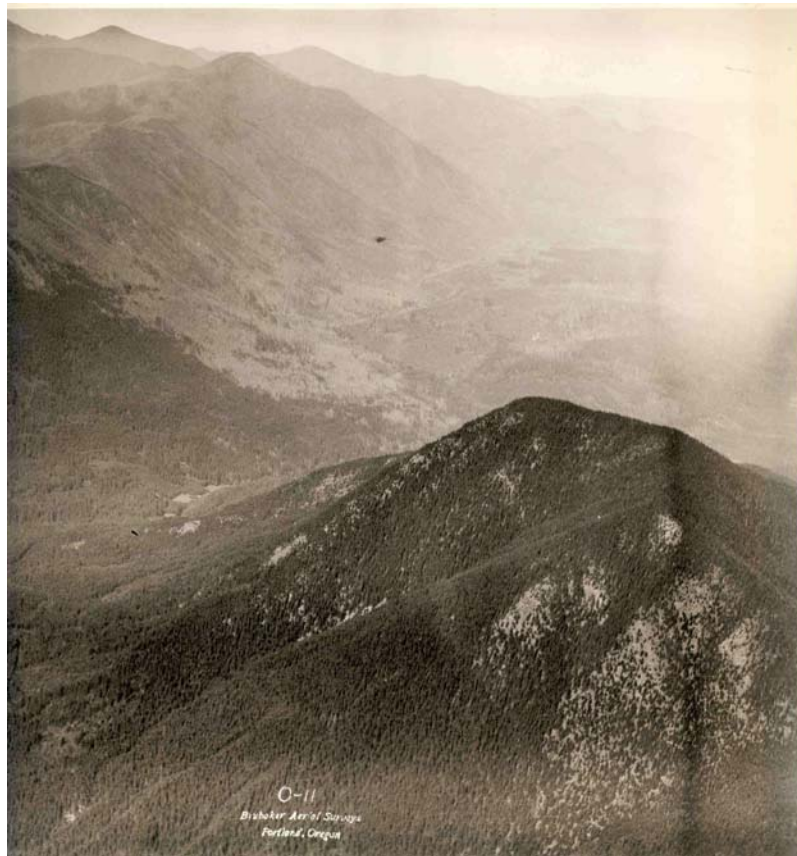
Pacific
Northwest
Region

January 2008



Environmental Assessment for Jackson Thinning

Olympic National Forest



Mt. Walker, 1928

The U.S. Department of Agriculture (USDA) prohibits discrimination in all its programs and activities on the basis of race, color, national origin, sex, religion, age, disability, political beliefs, sexual orientation, or marital or family status. (Not all prohibited bases apply to all programs.) Persons with disabilities who require alternative means for communication of program information (Braille, large print, audiotape, etc.) should contact USDA's TARGET Center at (202) 720-2600 (voice and TTY).

To file a complaint of discrimination, write USDA, Director, Office of Civil Rights, Room 326-W, Whitten Building, 1400 Independence Avenue, SW, Washington, DC 20250-9410 or call (202) 720-5964 (voice and TTY). USDA is an equal opportunity provider and employer.

Contents

Chapter 1 – Purpose and Need	1
Document Structure.....	1
Project Location	1
Background	1
Proposed Action	10
Decision Framework.....	10
Management Direction.....	11
Public Involvement	14
Issues	14
Chapter 2 - Alternatives	17
Process Used to Develop Alternatives	17
Alternatives not considered in detail	17
Alternatives.....	18
Project Design Criteria	41
Potential Additional Restoration/Improvement Opportunities	52
Summary Comparison of Alternatives.....	55
Chapter 3 – Affected Environment & Environmental Consequences.	62
Silviculture and Forest Stand Development.....	64
Wildlife	75
Soils.....	125
Aquatic Habitat and Fisheries.....	135
Botanical Resources.....	164
Recreation.....	175
Visual Quality	180
Economic Viability	187
Heritage Resources	189
Other Effects.....	192
Tiering and Forest Plan Consistency.....	203
Analysis File	205
Chapter 4 - List of Preparers and Agencies Consulted	206
Chapter 5 – Appendices.....	208
A. Acronyms	208

B. Silvicultural Data	210
C. Summary Tables of Roads Proposed for Use	218
D. Road Definitions	220
E. Response to Comments.....	222
F. References	260

List of Tables

Table 1. Forest Strategic Plan ratings for planning area 6th field watersheds.....	13
Table 2. Monitoring and Adaptive Management Actions Common to Action Alternatives.....	51
Table 3. Opportunities for Precommercial and Understory Thinning (~\$250/acre).....	54
Table 4. Past activities within Units proposed for treatment.....	67
Table 5. Federally listed wildlife species.....	80
Table 6. Summary of Acres Treated in Northern Spotted Owl Habitat.....	87
Table 7. Summary of acres treated in relation to potential/existing marbled murrelet habitat.....	90
Table 8. Regional Forester’s Sensitive Wildlife Species and their potential habitat in the project area.....	100
Table 9. Sensitive and Survey and Manage Mollusks with potential habitat in the project area.....	109
Table 10. Forest Management Indicator Species.....	115
Table 11. Fish species found within Lower Dosewallips, Spencer/Marple, and Lower Big Quilcene 6HUCs.....	137
Table 12. Distance of known fish locations to closest project unit.....	139
Table 13. Effects on selected indicators taken from the Matrix of Pathway and Indicators (NMFS).....	140
Table 14. Comparison of Temporary Road Construction/Reconstruction by Alternatives (miles).....	141
Table 15. Comparison of Logging Systems proposed in Riparian Reserve by Alternative (acres).....	141
Table 16. Comparison of Road Densities By Alternative.....	142
Table 17. Alternative A approximate acres in Riparian Reserve by logging system.....	145
Table 18. Temporary Road Miles in Alternative A.....	146
Table 20. Road densities by 6HUC subwatershed for current condition and during implementation of Alternative A.....	151
Table 21. Large woody debris recruitment.....	151
Table 22. Temporary Road Miles in Alternative B.....	155
Table 23. Road densities by subwatershed for Alternative B.....	156
Table 24. Alternative B acres in Riparian Reserve by logging system.....	157
Table 25. Temporary Road Miles in Alternative C.....	158
Table 26. Alternative C acres in Riparian Reserve by logging system.....	160
Table 27. Temporary Road Miles in Alternative D.....	161
Table 28. Road densities by subwatershed for Alternative D.....	162
Table 29. Alternative D acres in Riparian Reserve by logging system.....	163
Table 30. Regional Forester’s Sensitive and Survey and Manage Plants with potential habitat in the project area.....	165
Table 31. Forest Service Sensitive and Survey and Manage (S & M) bryophyte species with potential habitat in the Jackson Thinning project area.....	167
Table 32. Fungi on Regional Forester’s Sensitive Species and Survey and Manage Lists documented or suspected to occur on the Olympic National Forest.....	169

Table 33. Forest Service Sensitive and Survey and Manage lichen species with potential habitat in the project area.....	170
Table 34. Invasive plants documented in the project area.	173
Table 35. Summary of Financial Analysis Results.....	189
Table 36. Tree layer data (from 2002 stand exam).....	210
Table 37. Silvics.....	212
Table 38. Snags, coarse woody debris, old-growth trees, ground cover, and plant associations.	213
Table 39. Blowdown Risk Assessment	215
Table 40. Stand prescription notes.	216
Table 41. Temporary Roads Proposed for Use.....	218
Table 42. Summary table of system roads proposed for use.....	219

List of Figures

Figure 1. Vicinity map and map of project area with land allocations, roads, and locations of project units.	3
Figure 2. Watersheds and Riparian Reserve areas.	4
Figure 3. Unthinned, second growth stand.	7
Figure 4. Second growth stand immediately after commercial thinning.	8
Figure 5. Second growth stand one year after thinning.	8
Figure 6. Canopy and understory diversity after thinning	9
Figure 7. Example of an unclassified, abandoned road.	24
Figure 8. Pictures of temporary roads during use.	25
Figure 9. Pictures of temporary roads after decommissioning and surrounding thinned forest. ...	25
Figure 10. Map of Alternative A	27
Figure 11. Map of Alternative B	31
Figure 12. Map of Alternative C	35
Figure 13. Map of Alternative D.....	39
Figure 14. Mt. Walker, 1928.	70
Figure 15. Distribution of dispersal and suitable habitat for northern spotted owl and murrelet in the project area.....	81
Figure 16. Skyline cable yarding corridors (before and after thinning).....	178
Figure 17. Current view of Mt. Walker's northeast side from town of Quilcene (Center Road).	181
Figure 18. LMS/VS model of the north side of Mt. Walker looking at Unit 20, unthinned.	183
Figure 19. VMS/VS model of the north side of Mt. Walker looking at Unit 20, thinned.	183
Figure 20. LMS/VS depiction of Mt. Walker Unit 21 unthinned (left) and thinned (right) from the most direct view on Hwy 101.....	184
Figure 21. Visual modeling of Unit 21 unthinned (left) and thinned (right) from nearest point on Hwy 101.....	184
Figure 22. Picture of a recent thinning project.....	186
Figure 23. Picture of a recently completed commercial thinning project using cable yarding methods from a distance of approximately 1/3 mile.	187