

## Senior Community Service Employment Program

See our program website at [www.doleta.gov/seniors](http://www.doleta.gov/seniors)

### Analysis

Preliminary results for June 30, 2008, indicate that the overall program performance goals were substantially achieved:

- Entered Employment  
Goal: 33% YTD: 52%
- Employment Retention  
Goal: 67% YTD: 71%
- Average Earnings  
Goal: 6,770 YTD: 6,713
- In PY 2007, the program served nearly 90,340 individuals or had a year to date service level of 169 percent.
- Benefiting communities through community service is an equally important goal of the SCSEP. In PY 2007 SCSEP participants provided over 47 million hours of service to local communities or had a year to date service rate of 81 percent, which is one percentage higher than the goal.

### Further Analysis

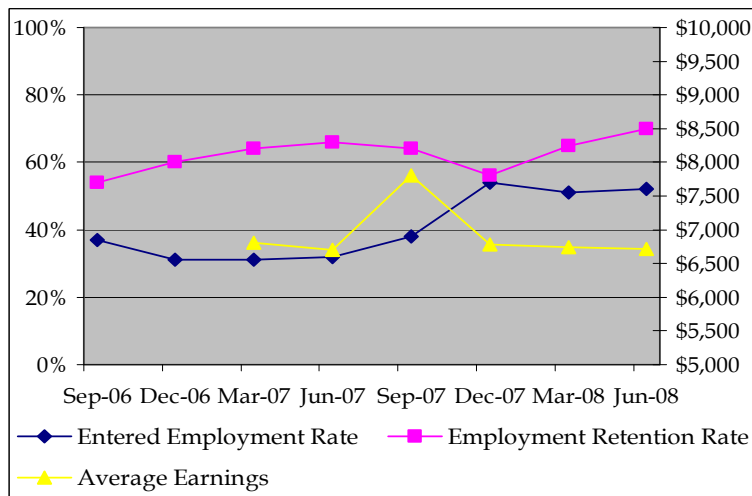
- The entered employment rate has increased by 20 percentage points in the current quarter when compared with same time period last year.
- There has been a rise in average earnings and the employment retention rate (ERR), 8 percent and 5 percent respectively in the current quarter. The increase in the EER can be attributed to:
  - 1) continued Technical Assistance to grantees on common measures reporting

## Charting Program Performance

### Current Quarter/One Year Ago

Performance Measure	6/30/07	6/30/08
Entered Employment	32%	52%
Retained Employment	66%	71%
Average Earnings	\$6,704	\$6,713

### Performance in the Past Eight Quarters



### Program Description

Originally authorized by the Older Americans Act of 1965, the Senior Community Service Employment Program (SCSEP) is designed to foster individual economic self-sufficiency and promote useful opportunities in community service employment for unemployed low-income persons (particularly persons who have poor employment prospects) who are age 55 or older, and to increase the number of persons who may enjoy the benefits of unsubsidized employment in both the public and private sectors.

### Other Program Highlights and Innovations

- 90,340 individuals participated in the SCSEP in PY 2007, receiving training in community service assignments while providing over 47 million hours of service to local communities.
- In PY 2007, 25 percent of participants did not have a high school diploma; 66 percent of the participants

2) more complete data. (All SCSEP grantees submitted performance reports for PY 2007).

In addition, when a comparison is made between the current quarter and the quarter ending on March 30, 2008, the retained employment rate shows a six percentage point increase.

were at least sixty years old; 88 percent of participants lived at or below the federal poverty level at the time of enrollment; 69 percent of participants were women; 11 percent were Hispanic and 43 percent were non-white. Individuals with disabilities made up 23 percent of the participants, and 13 percent of the participants were veterans or spouses of veterans.

- SCSEP has begun to implement data validation requirements for program eligibility and performance elements that are reported through the SPARQ reporting system. These data validation efforts will bolster performance accountability by improving both accuracy and reliability.