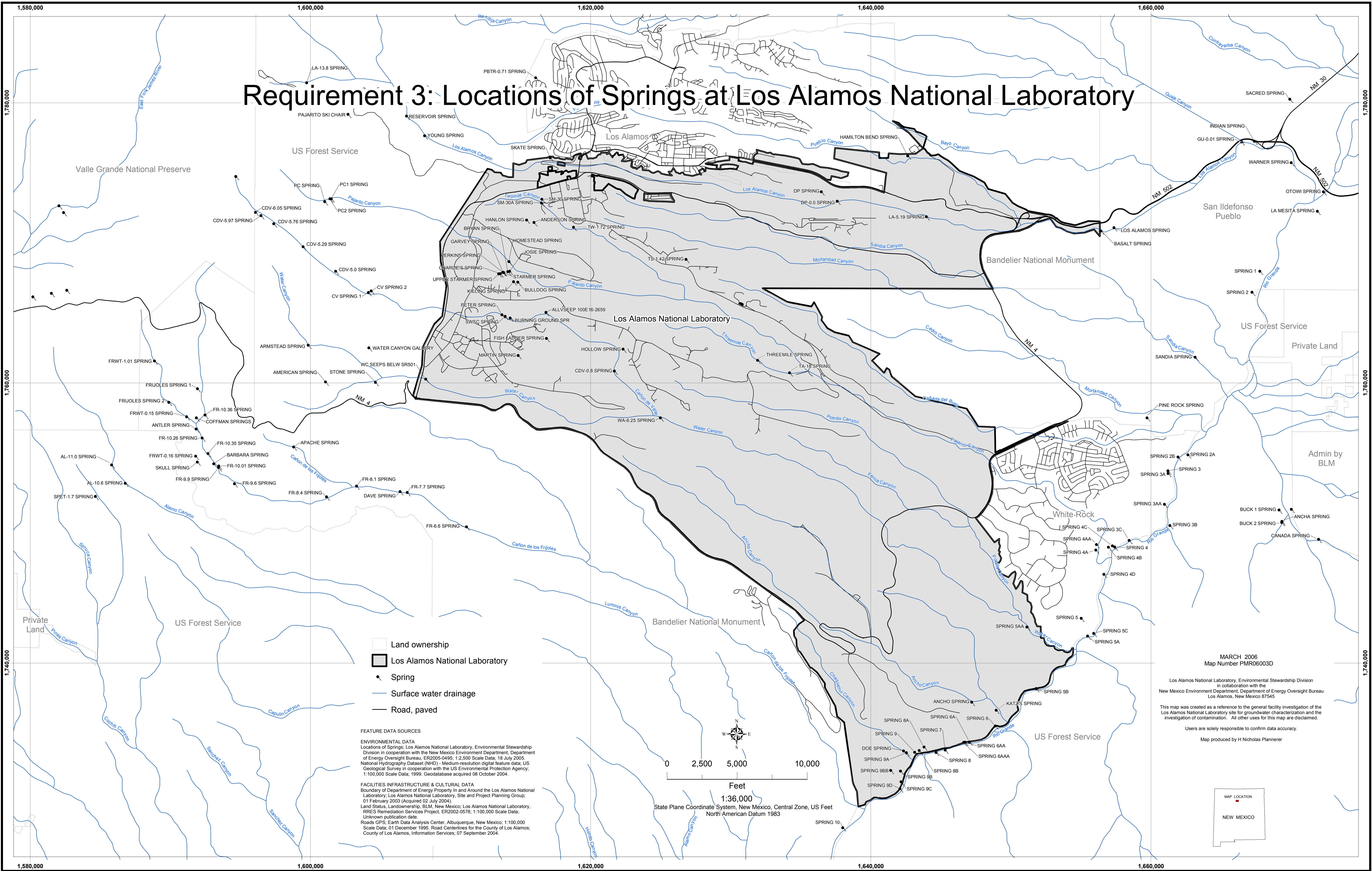


Requirement 3: Locations of Springs at Los Alamos National Laboratory

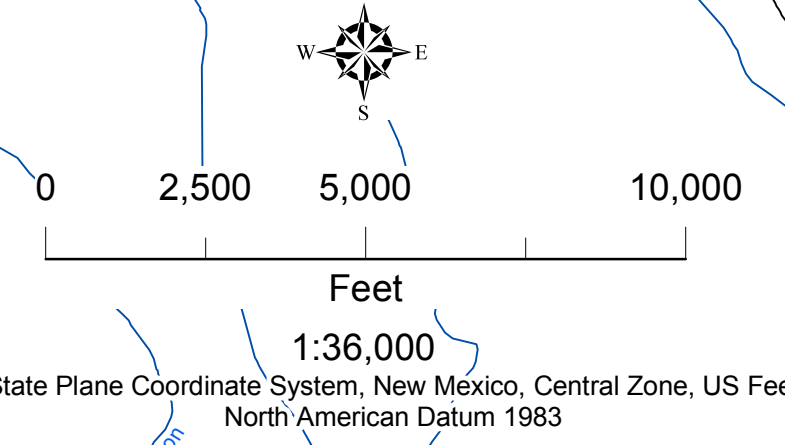


- Land ownership
- Los Alamos National Laboratory
- Spring
- Surface water drainage
- Road, paved

FEATURE DATA SOURCES

ENVIRONMENTAL DATA
 Locations of Springs: Los Alamos National Laboratory, Environmental Stewardship Division in cooperation with the New Mexico Environment Department, Department of Energy Oversight Bureau, ER2005-0495; 1:2,500 Scale Data; 18 July 2005.
 National Hydrography Dataset (NHD) - Medium-resolution digital feature data; US Geological Survey in cooperation with the US Environmental Protection Agency; 1:100,000 Scale Data; 1999; Geodatabase acquired 08 October 2004.

FACILITIES INFRASTRUCTURE & CULTURAL DATA
 Boundary of Department of Energy Property in and Around the Los Alamos National Laboratory; Los Alamos National Laboratory, Site and Project Planning Group; 01 February 2003 (Acquired 02 July 2004).
 Land Status, Landownership, BLM, New Mexico; Los Alamos National Laboratory, RRES Remediation Services Project, ER2002-0578; 1:100,000 Scale Data; Unknown publication date.
 Roads GPS; Earth Data Analysis Center, Albuquerque, New Mexico; 1:100,000 Scale Data; 01 December 1995. Road Centerlines for the County of Los Alamos; County of Los Alamos, Information Services; 07 September 2004.



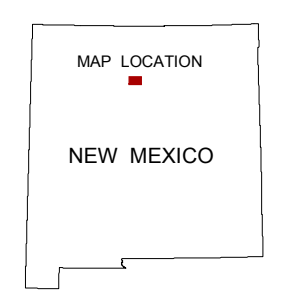
MARCH 2006
 Map Number PMR06003D

Los Alamos National Laboratory, Environmental Stewardship Division
 in collaboration with the
 New Mexico Environment Department, Department of Energy Oversight Bureau
 Los Alamos, New Mexico 87545

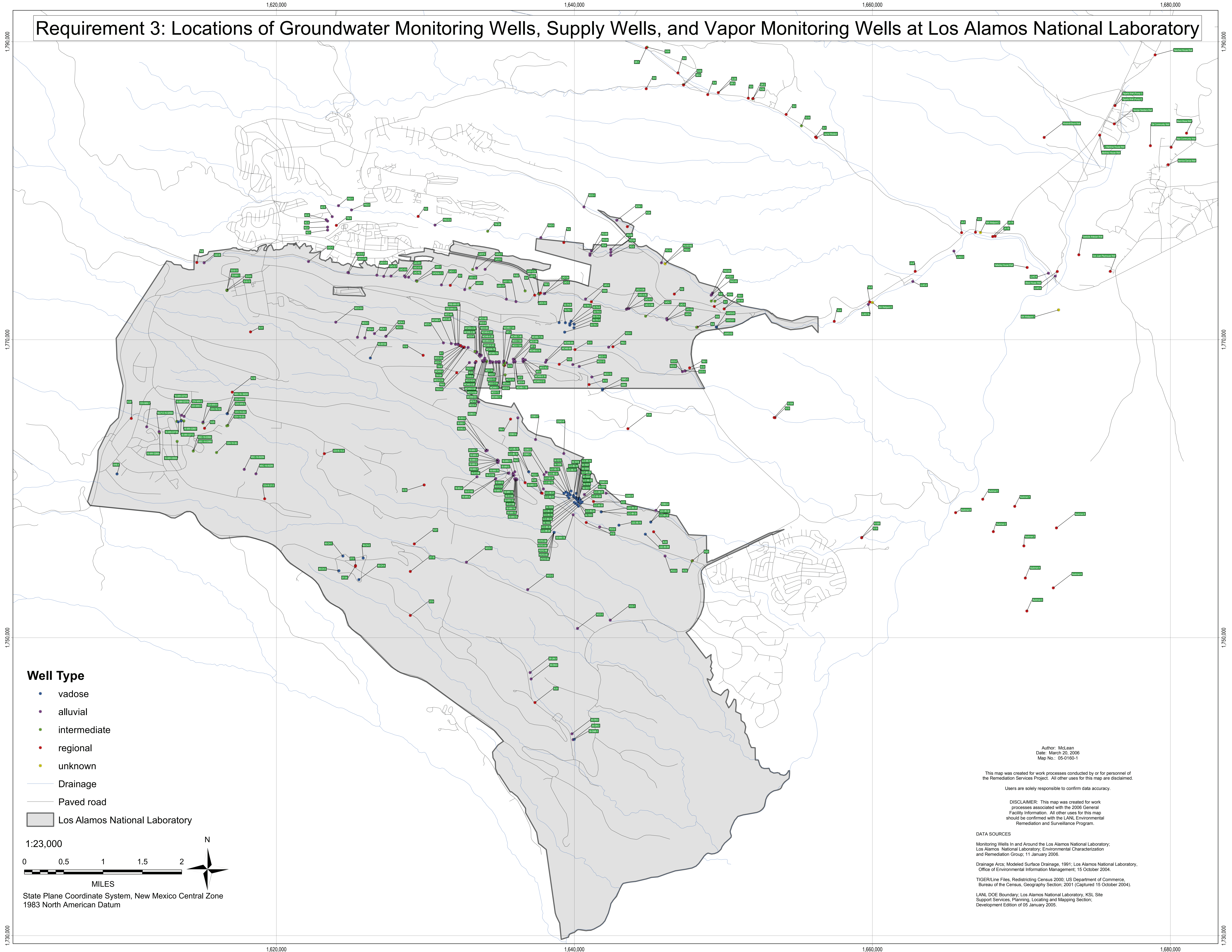
This map was created as a reference to the general facility investigation of the Los Alamos National Laboratory site for groundwater characterization and the investigation of contamination. All other uses for this map are disclaimed.

Users are solely responsible to confirm data accuracy.

Map produced by H Nicholas Planner



Requirement 3: Locations of Groundwater Monitoring Wells, Supply Wells, and Vapor Monitoring Wells at Los Alamos National Laboratory



- Well Type**
- vadose
 - alluvial
 - intermediate
 - regional
 - unknown
- Drainage
- Paved road
- Los Alamos National Laboratory

1:23,000

0 0.5 1 1.5 2

MILES

N

State Plane Coordinate System, New Mexico Central Zone
1983 North American Datum

Author: McLean
Date: March 20, 2006
Map No.: 05-0160-1

This map was created for work processes conducted by or for personnel of the Remediation Services Project. All other uses for this map are disclaimed.
Users are solely responsible to confirm data accuracy.

DISCLAIMER: This map was created for work processes associated with the 2006 General Facility Information. All other uses for this map should be confirmed with the LANL Environmental Remediation and Surveillance Program.

DATA SOURCES

Monitoring Wells In and Around the Los Alamos National Laboratory; Los Alamos National Laboratory; Environmental Characterization and Remediation Group; 11 January 2006.

Drainage Arcs; Modeled Surface Drainage, 1991; Los Alamos National Laboratory, Office of Environmental Information Management; 15 October 2004.

TIGER/Line Files, Redistricting Census 2000; US Department of Commerce, Bureau of the Census, Geography Section; 2001 (Captured 15 October 2004).

LANL DOE Boundary; Los Alamos National Laboratory, KSL Site Support Services, Planning, Locating and Mapping Section; Development Edition of 05 January 2005.