

Oil and Gas Field Code Master List Updates 1998

January 1999

Energy Information Administration
Office of Oil and Gas
U.S. Department of Energy
Washington, DC 20585

This report was prepared by the Energy Information Administration, the independent statistical and analytical agency within the Department of Energy. The information contained herein should be attributed to the Energy Information Administration and should not be construed as advocating or reflecting any policy position of the Department of Energy or any other organization.

Preface

The *Oil and Gas Field Code Master List Updates 1998* is an addendum to the 1997 edition of the EIA publication *Oil and Gas Field Code Master List*, an annual listing of all identified oil and gas fields in the United States. These updates represent the addition of new fields to the list and changes to the records of previously listed fields, including deletions. The current publication is based on field information collected through October 1998.

This *Updates* publication and the complete Master List of more than 47,000 oil and gas fields are printed in alternate years. However, the complete version, this year titled *Oil and Gas Field Code Master List 1998*, has been prepared and is available electronically on the quarterly EIA Energy InfoDisc CD-ROM and at the EIA World-Wide Web site <<http://www.eia.doe.gov>>.

The purpose of this publication is to provide standardized names and codes for identifying domestic fields. Use of these field names and codes fosters consistency of field identification by government and industry. As a result of their widespread adoption they have in effect become a national

standard. The use of field names and codes listed in *Oil and Gas Field Code Master List* is required on survey forms and other reports regarding field-specific data collected by EIA. The surveys currently using these field names and/or field codes are Form EIA-23, "Annual Survey of Domestic Oil and Gas Reserves", and Form EIA-191, "Monthly Underground Gas Storage Report".

EIA gratefully acknowledges the assistance provided by various State organizations and trade associations, and the Minerals Management Service of the U.S. Department of the Interior, in verifying the existence of oil and gas fields and confirming their officially recognized names.

General information regarding this publication may be obtained from David F. Morehouse (202-586-4853, david.morehouse@eia.doe.gov), Natural Gas Division, in the Energy Information Administration's Office of Oil and Gas. Detailed information on the report's content may be obtained from William L. Monroe (202-586-4665, william.monroe@eia.doe.gov) or Robert F. King (202-586-4787, robert.king@eia.doe.gov).

Contents

Page

1. Overview	1
Introduction	1
Summary Statistics	1
Publication Organization and Content	1
History of Field Code Project	2
Definition of a Field	2
Coding Of Fields	2
General Field Naming Conventions	3
2. Methodology for Field Code Assignments	5
Purpose	5
General System Overview	5
Field Information Research	5
State Source Review Procedures	5
Assigning New Field Code Numbers	7
Field Alias Procedures	7
Field Alias Records That Have Several Official Names	7
Fields With More Than One Name Change	7
Offshore Code Assignments	8
Field Naming Conventions	8
Use of Compass Directions in Field Names	8
Special Naming Conventions	8
Reused Field Names	9
Invalid Field Record Procedures	9
3. User's Guide	11
Field Code Master List	11
Master Field Record	11
Alias Field Record	12
Field Code Index	12
Coalbed Methane Field List	12
Active Gas Storage Fields	12
Fields Located in Multiple Jurisdictions	13
Outer Continental Shelf Planning Areas	13
Glossary	38
Oil and Gas Field Code Master List Updates	39
Invalid Field Record List Updates	49
Tables	
1. List of Authorities on Oil and Gas Field Nomenclature	4
2. State Abbreviations and Geographic Subdivision Codes	15
3. U.S. Geological Survey Alaska Quadrangles and Associated Codes	16
4. Coalbed Methane Fields	18
5. Active Gas Storage Fields	20
6. Fields Located in Multiple Jurisdictions	25

Figures

1. Field Code Processing Flow Chart	6
2. Sample of a Field Code Master List Page	14
3. Sample of a Field Code Index Page	17
4. Subdivisions of Alaska and U.S. Geological Survey Quadrangles	30
5. Subdivisions of California	31
6. Subdivisions of Louisiana	32
7. Subdivisions of New Mexico	33
8. Subdivisions of Texas	34
9. Western Planning Area, Gulf of Mexico Outer Continental Shelf Region	35
10. Central Planning Area, Gulf of Mexico Outer Continental Shelf Region	36
11. Eastern Planning Area, Gulf of Mexico Outer Continental Shelf Region	37

1. Overview

Introduction

This is the seventeenth annual edition of the Energy Information Administration's (EIA) *Oil and Gas Field Code Master List*. It reflects data collected through October 1998 and provides standardized field name spellings and codes for all identified oil and gas fields in the United States. The *Oil and Gas Field Code Master List* is available in electronic form:

- On the quarterly EIA Energy InfoDisc CD-ROM
- At the EIA World-Wide Web site
<<http://www.eia.doe.gov>>

The complete publication appears in electronic format each year but is printed every other year. In the alternate years, new and changed field information is printed in *Oil and Gas Field Code Master List Updates*.

Other Federal and State government agencies, as well as industry, use the EIA *Oil and Gas Field Code Master List* (FCML) as the standard for field identification. In order for it to be useful, it must be accurate and remain current. To accomplish this, EIA constantly reviews and revises this list. EIA welcomes all comments, corrections, and additions to the FCML. All such information should be provided to Rhonda Green of EIA (214-720-6161, rhonda.green@eia.doe.gov).

Summary Statistics

There are 58,874 field records in this year's FCML, 508 more than last year. The FCML includes:

- Master field names, with separate field records for each State and county in which a given field resides. A field may also occur in more than one jurisdiction and even be assigned different names by the respective State or Federal field naming authorities.
- Alias field names, specifying field names previously assigned by a field naming authority but not in use currently. The FCML links each alias field name to the currently recognized (master) field name in same State and county. In the Gulf of Mexico, alias field names are also used to identify each offshore area and numbered block in which a given field occurs.

Taking into consideration the double-counting of field records under such circumstances, EIA identifies 47,351 distinct oil and gas fields in the United States as of October

1998. This count includes fields that no longer produce oil or gas as well as 491 fields used at some time, in whole or in part, for underground storage of natural gas or crude oil. The following is a summary count by hydrocarbon type of the distinct U.S. oil and gas fields:

Field Type	Number
U.S. distinct oil and gas fields	47,351
Fields with oil	34,969
Fields with gas	32,256
Fields with associated-dissolved gas	15,962
Fields with nonassociated gas	21,668
Fields with unspecified hydrocarbon	140

Notes: The sum of the hydrocarbon-component fields is greater than the total number of distinct fields because many fields have more than one type of hydrocarbon present. Fields with unspecified hydrocarbon include aquifers used for underground gas storage as well as fields for which the hydrocarbon type is not clearly documented at this time in EIA records.

EIA has assigned a unique six-digit *field name code* to each field name. The number of field names that have been recognized by the field naming authorities, or by tradition, total 53,447. Of these, 46,348 are currently considered official, while 7,099 are not currently declared official by the field naming authorities and are designated as *alias names* by EIA.

This report also contains an Invalid Field Record List Update of 6 records that have been removed from the FCML since last year's report. These records were found to be either technically incorrect or to represent field names which were never recognized by field naming authorities.

Publication Organization and Content

Chapter 2 provides details on the methodology used in reviewing source information, standardizing field names where appropriate, and assigning field codes. Chapter 3 and the Glossary that follows it provide explanations and definitions for utilizing this publication. The Field Code Master List itself follows the Glossary. It is organized by State, showing fields sorted alphabetically by field name within each State. Fields in the Federal Offshore Outer Continental Shelf are listed following Wyoming. Each field name entry contains the field code, field name, geographical information, and other related data such as hydrocarbon

occurrence and year of field discovery. Following the Master List is the Field Code Index (not included in *Oil and Gas Field Code Master List Updates*). This is an abbreviated listing sorted by field code with field names and the State or States in which each field name appears in the Master List. The Field Code Index is intended as a quick reference when only the field code happens to be known. The Master List must be consulted for the detailed information. Following the Field Code Index is the Invalid Field Record List Updates, which identify field records appearing the previous year's Master List that now should not be used for the reason stated.

History of Field Code Project

The EIA Field Code Master List evolved from the Federal Power Commission's Field/Plant Code List (FPC Field Code List). The FPC Field Code List, originally developed in the 1960s, had a unique code assigned to each field on the list. That is, two fields having identical names in separate States had separate six-digit field codes. However, some respondents to Form FPC 15, "Interstate Pipeline's Annual Report of Gas Supply", began using the first code given in the list for a field name, regardless of the State involved. With few respondents applying computerized edits to their submissions at that time, miscoding of fields became a problem. The solution applied was to recode the fields on the list so that any fields with identical names were assigned the same six-digit code (a field name code) but were differentiated by the State and county codes incorporated in the full field code. For example, 145385KS101 is the field code for the CLARK field in Kansas and 145385TX285 is the field code for the CLARK field in Texas, while 145385 is the *field name code* for CLARK.

The FPC Field Code List, originally designed to handle data relating to interstate gas fields, was expanded over the years to include the names of oil fields and intrastate gas fields. Six-digit codes were assigned in ascending order to alphabetically sorted field names. Codes from the FPC Field Code List were used in filing Form FPC 15 and Form FPC 8, "Underground Gas Storage Report".

After the establishment of the Department of Energy (DOE) in 1977, the requirement to gather annual, verifiable oil and gas reserves estimates led to the development of Form EIA-23, "Annual Survey of Domestic Oil and Gas Reserves". Form EIA-23 collects certain data by field, and the use of the FPC Field Code List aided the reporting and processing of these data. As use of the FCML expanded by way of the Form EIA-23 program, additional work to verify and update the code list was necessary to keep it current. In 1981, the correlation between the code number sequence and the alphabetical field name sequence was dropped. This

change precluded the necessity of periodically reassigning field codes in order to maintain the list in parallel numeric and alphabetic order.

The counts showing the number of distinct fields first appeared with the 1988 annual FCML publication. A complex procedure merges the FCML with a list of U.S. counties contiguous to one another and also the list of multi-jurisdictional fields (see Chapter 3). Essentially, this procedure forms a code unique to each true field that can then be listed with each county-level field entry. A future enhancement to this Master List will be to publish these unique codes.

Definition of a Field

A field is defined as "an area consisting of a single reservoir or multiple reservoirs all grouped on, or related to, the same individual geological structural feature and/or stratigraphic condition. There may be two or more reservoirs in a field which are separated vertically by intervening impervious strata, or laterally by local geologic barriers, or by both."

This definition is not used by all States in their designation of fields; consequently, areas classified as individual fields by some States may be found combined in the FCML.

Coding Of Fields

As noted above, the six-digit field name code is common to a specific field name, regardless of whether one or several distinct fields exist having that particular name. However, a given field (at least within a specified county) can be identified if the field name code is coupled with the corresponding State abbreviation and county code.

Many field codes still remain in a numerically ascending order when the FCML is sorted by alphabetized field name. However, field names added since 1981 have been assigned the first available (numerically lowest) unused code. Fields located in the Federal Offshore area and large State offshore blocks of the Gulf of Mexico will continue to be represented by codes above 800000, according to their offshore area name and block number.

On the Master List, *italicized* field name codes identify alias records. The current official field name and field code appear **in bold type** after the label "Alias For:" on the line immediately following the alias field name. Respondents to the Form EIA-23 may not use alias field names and codes. Respondents to Form EIA-191 may use the alias field names when the field name used for gas storage operations in a particular field differs from the official name assigned to the

field as a whole. See Chapter 3 for a complete list of active gas storage fields.

Records that were on the FCML last year but which were subsequently found to be incorrect are entered on a separate Invalid Field Record List. These records were incorrectly placed on the FCML, possibly when complete information was not available. Field names and codes on the Invalid Field Record List should not be used in DOE filings with the indicated State and county. Note, however, that the identified field name and field name code may still be valid for a different State/county combination.

General Field Naming Conventions

Field name spellings in the FCML reflect a number of conventions and conditions. In most instances, the 26-character maximum-length field name reflects the conventions imposed by the data block length on DOE forms and by the field naming authority, usually the State oil and gas regulatory agency. Table 1 lists the field naming authorities, who are also responsible for identifying fields or portions of a field, such as a well, lease, block, unit, or section. In the absence of a State authority, field names that have come into general acceptance in an area may be listed. In the Appalachian Region, field area names are often used. Chapter 2 provides details of the EIA field naming convention.

Table 1. List of Authorities on Oil and Gas Field Nomenclature

State	Naming Authority	State	Naming Authority
Alabama	State Oil and Gas Board of Alabama	Nebraska	Nebraska Oil and Gas Conservation Commission
Alaska	Alaska Oil and Gas Conservation Commission	Nevada	Nevada Department of Conservation and Natural Resources, Division of Mineral Resources
Arizona	Arizona Oil and Gas Conservation Commission	New Mexico	New Mexico Energy Minerals and Natural Resources Department, Oil Conservation Division
Arkansas	Arkansas Oil and Gas Commission	New York	New York Department of Environmental Conservation, Division of Mineral Resources
California	California Department of Conservation, Division of Oil and Gas	North Dakota	North Dakota Geological Survey
Colorado	Colorado Department of Natural Resources, Oil and Gas Conservation Commission	Ohio	Ohio Department of Natural Resources, Division of Oil and Gas
Florida	Florida Department of Natural Resources, Bureau of Geology, Oil and Gas Administration	Oklahoma	Mid-Continent Oil and Gas Association, Oklahoma Nomenclature Committee
Illinois	Illinois Department of Energy and Natural Resources, State Geological Survey	Oregon	Oregon Department of Geology and Minerals Industries, Division of Oil and Gas Geology
Indiana	Indiana Department of Natural Resources, Geological Survey, Petroleum Section	Pennsylvania	Pennsylvania Department of Environmental Resources, Bureau of Topographic and Geologic Survey
Iowa	Iowa Geologic Survey	South Dakota	Department of Environment and Natural Resources
Kansas	Kansas Geological Survey	Tennessee	Tennessee Department of Conservation, Division of Geology
Kentucky	Kentucky Geological Survey	Texas	Railroad Commission of Texas, Oil & Gas Division
Louisiana	Louisiana Department of Natural Resources, Office of Conservation	Utah	Utah Field Names Advisory Committee, Oil, Gas and Mining Division, Department of Natural Resources
Maryland	Maryland Geological Survey	Virginia	Department of Mines, Minerals and Energy, Oil and Gas Division
Michigan	Michigan Department of Natural Resources, Geological Survey Division	Washington	Oil and Gas Conservation Committee
Minnesota	Minnesota Department of Natural Resources, Minnesota Geological Survey, Division of Waters	West Virginia	West Virginia Geological and Economic Survey
Mississippi	Mississippi State Oil and Gas Board	Wyoming	Field Name Advisory Committee, Wyoming Oil and Gas Conservation Commission
Missouri	Missouri Department of Natural Resources, Division of Geology and Land Survey	Federal Offshore	U.S. Department of the Interior, Minerals Management Service
Montana	Montana Department of Natural Resources and Conservation, Oil and Gas Conservation Division		

Source: Energy Information Administration, Office of Oil and Gas.

2. Methodology for Field Code Assignments

Purpose

The purpose of the Field Code Master List (FCML) effort is to provide the Energy Information Administration (EIA) and others with standardized field name spellings and associated codes for all crude oil and natural gas fields throughout the United States. The names and codes are compiled during the research phase on a computerized Field Code Master File (FCMF), which is updated periodically as new information on oil and gas fields is obtained and processed by EIA. The published and electronic versions of the *Oil and Gas Field Code Master List* are derived from the FCMF. The first edition of the Master List was published by EIA in December 1982.

General System Overview

Figure 1 presents a flow chart of the activities necessary to process new field information. All new field data received by EIA goes through this cycle. The new information generally is obtained directly from reports produced by the various State and Federal field naming authorities.

The system also incorporates a Field Code Working File (FCWF) for the development and verification of new field information. The FCWF is updated as information about the field is obtained. Periodically all fully resolved records are extracted from the FCWF and moved to the FCMF. Once this FCMF “update” is completed, the resolved records are deleted from the FCWF. At publication time, the updated FCMF is divided into its primary components, the Field Code Master List and the Invalid Field Records List.

Field Information Research

Geologists and petroleum engineers are responsible for supervising research and final resolution of field information. Listings of the FCWF can be produced by region for review. There are several possible explanations why field information under review is not already listed on the FCMF. This could reflect the following:

- A relatively recent oil or gas field discovery
- A recently discovered extension of an old field into a new county or State
- An alias used for the official name
- An error exists in the reported information.

The official recognition of a new field discovery by a State or Federal field naming authority is a prerequisite for the assignment of an official EIA field code. Table 1 on page 4 lists these naming authorities. Information regarding State recognition is obtained through official State publications and computer tapes, or through other contact with the State agencies.

If the field name in question has not been officially recognized, several sources of information exist for further investigation into the third and fourth possibilities listed above. These include:

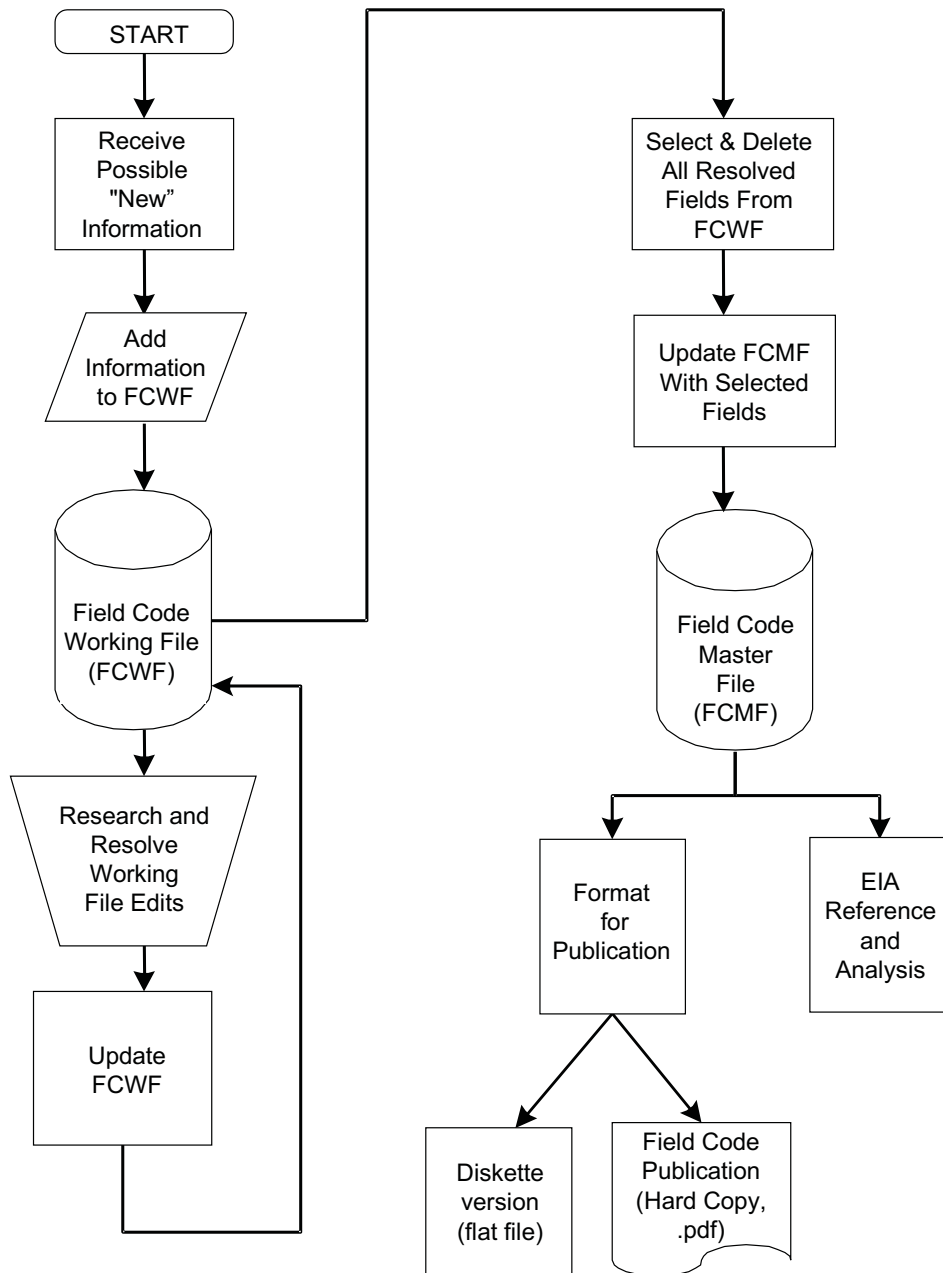
- Analysis of State data files (the Texas and New Mexico files, for example, contain detailed information for each field and operator)
- Review of oil and gas industry publications and computerized data bases
- Telephone contact with the source of the information.

State Source Review Procedures

State sources provide most of the field names. As State publications are released they are routinely reviewed. The information regarding new fields is compared to the information on the FCMF. If the FCMF does not contain the new field, the field name and associated information are placed on the Working File. Subsequent to adding batches of records to the Working File, edit check reports are returned to the analyst that identify missing, inconsistent, or duplicative information on the Working File. The analyst then provides update transactions to correct the problems as appropriate, and a field code is assigned. Periodically, a supervisory analyst reviews those Working File records in which error-edits have been resolved for consistency of assigned field names and field codes with the EIA standards. Then the resolved records are moved to the Master File.

The quality and quantity of information available through the State publications varies. Some States publish new field information relatively frequently (*e.g.*, monthly) in a format that is easily reviewed for incorporation into the FCMF. Routine processing of State sources begins with these publications. Additional State publications, such as State geological papers, are also included in these routine reviews. Periodically, all FCMF records for a State are compared to the most recent State publication.

Figure 1. Field Code Processing Flow Chart



Source: Energy Information Administration, Office of Oil and Gas

Some States do not publish field information, or the field information is not carried in the latest publication but in a previous one. In an overall review of the FCMF, when a particular field is not found in any available State publication, the source NISP (not in State publication) is coded into the source section of the FCMF. When an earlier State source reports “No Production”, “No Reports”, or some similar remark for one or more years, and does not show the field in subsequent sources, the field is still considered to be official, whether it is presently producing or not. When a field is found in an older State source in combination with, or in subordination to, another field name, the State is contacted and asked to clarify the status of the field. This research resolves most of the NISP records, allowing them to be finally categorized as a master field record (with a field naming authority source), as an alias field record, or as an invalid field record. Certain field records, representing field names assigned by non-field naming authority publications that were coded prior to initiation of production in a field, and were subsequently abandoned without recorded production, have been classified as invalid.

Assigning New Field Code Numbers

A sequential listing of unused field code numbers is referenced in assigning new 6-digit field name codes. For field names that are already in use, either in another State or in a different section of the same State, the same code can be assigned to the new field entry. When the field name is completely new, the first available code (numerically lowest) is assigned and is therefore linked with the field name regardless of alphabetization, with the following exception: codes 800000-999998 are excluded from sequential code assignments, as they are reserved for offshore Gulf of Mexico fields.

Field Alias Procedures

A field alias is an unofficial name for an oil and gas field. The analyst detecting that a field name should be recorded as an alias name specifies a successor field name. Initially, the successor name is a master field name, but over time, the successor field name might also become an alias name. When that occurs, both unofficial field names are shown in the FCML and both point to the same current field name.

A field alias may reflect the following possibilities:

- An alternate name for the official name
- A field that has been renamed to something else

- A field that has been combined, consolidated, or merged into another field
- A field that has split into two or more new fields and the old name is no longer used.

For the combined or renamed types of aliases, both the official and alias names are on the FCML.

For alternate name aliases, the official name must be on the FCML in all cases. The alias name will be on the FCML in the following cases:

- A representative from the State agency is aware of the alias name as an alternative for the official name
- The alias name was originated on the old Form “FERC 15 “Interstate Pipeline’s Annual Report of Gas Supply” respondent (formerly collected by the Federal Energy Regulatory Commission)
- Two or more operators report the same alias.

An alternate name alias which does not meet one of these three criteria normally would not appear on the FCML.

Field Alias Records That Have Several Official Names

Certain alias field records result from the splitting of a field into two or more fields, with none of the resulting fields using the original field name. For example, Field A was split into three fields: Field B, Field C, and Field D. Fields B, C, and D would be listed as field records on the FCML. Field A would be listed as a field alias record referencing Field B, **but not** Fields C and D, and would show **SPLIT** as its reason for alias. A user desiring the names of the other fields should contact EIA or the field naming authority to obtain the names of the other fields of which Field A was formerly composed.

Fields With More Than One Name Change

The current official name may be the result of several name changes. For instance, in Oklahoma RINGWOOD NE was combined with RINGWOOD NORTH in 1965, and subsequently combined into RINGWOOD in 1966. The listing for RINGWOOD NE would show the correct field name as RINGWOOD. If multiple names were involved, the alias field name record would list only the current (correct) field name. (For example, in Oklahoma, HENNESSEY SE is an alias for HENNESSEY EAST which has since been changed first to DOVER-HENNESSEY and finally to SOONER TREND. The correct name for the alias HENNESSEY SE, HENNESSEY EAST and DOVER-HENNESSEY is SOONER TREND.) Information

on the chain of successive field names may be obtained from the appropriate field naming authority or EIA.

Offshore Code Assignments

Federal Outer Continental Shelf (OCS) fields in areas other than the Gulf of Mexico are given names in the same manner as onshore fields, and are coded with the next sequential code.

Offshore fields in the Gulf of Mexico OCS receive a field name code that is determined by the lease block (or blocks) for which they are named by the Minerals Management Service (MMS). The last three digits of the code are the block number. For instance, East Cameron (offshore area prefix code 824) Block 071, receives the field code of 824071. If several blocks are included in one field, the field code reflects the number of the block for which the field is named. The other blocks included in the field are listed on the FCML as aliases to the official name. When MMS has named two fields with the same basic block number, *i.e.*, Ship Shoal Blk 113 field and Ship Shoal Blk 113A field, the prefix code from an adjacent area for which the block number could not occur is utilized for the latter designated field.

There are cases where a particular OCS lease block contains portions of two or more fields. If one of the fields is named for the block concerned, there will be an entry in the REMARKS section indicating PBI, for "Part of Block In", followed by the field code of the other included field. If the block concerned is only an alias to all the fields involved, the alias type (or reason) code will be set as MULTI to highlight that more than one field is included within the lease block.

Fields in large offshore State domain blocks in the Gulf of Mexico are assigned codes in the manner of offshore Federal fields. Special prefixes, generally unassigned prefixes for area surveys, are used for the small State block fields. A special prefix has been set aside for High Island-State (Texas). This prefix is used only with the small block fields. For State blocks that exceed 999, an unused three-digit prefix ending in 1 is used, such as SOUTH PADRE IS BLK 1068 with code 951068.

Field Naming Conventions

Use of Compass Directions in Field Names

As a general rule, a compass direction used as part of a field name is placed at the end of the name. For example, the field named West Davenport by a State source bears the name

DAVENPORT WEST on the FCML. However, a field named after a known landmark, such as the town of East Davenport, bears the name EAST DAVENPORT on the FCML.

If the field DAVENPORT WEST is then combined with other wells or fields and the word District, or some similar word, is added to the name, the name will appear on the FCML as DAVENPORT WEST DISTRICT. This enables users to distinguish between two fields, one named as a result of forming a district with the DAVENPORT WEST field as its nucleus, *e.g.*, DAVENPORT WEST DISTRICT, and the other which is a new district to the west of DAVENPORT DISTRICT, *e.g.*, DAVENPORT DISTRICT WEST.

Abbreviations are generally not applied to field names provided by the field naming authorities in connection with onshore field names. Exceptions are that non-cardinal compass points, such as NW for Northwest or SE for Southeast, are always abbreviated, and when the name of a combined field has been formed using all the names of the former fields, some abbreviations are applied to fit the name with the 26-character limit. Note, however, that the four cardinal compass points are always spelled out in onshore field names.

Offshore field names in the Gulf of Mexico nearly always consist of an offshore area name and block number specified by the Minerals Management Service (MMS). Example: EAST CAMERON BLOCK 299. Also, the FCML retains the subarea identifiers such as EAST CAMERON *SOUTH ADDITION* BLOCK 299 field. Because this results in field names frequently exceeding the 26-character limit, EIA applies a standard set of abbreviations for its Gulf of Mexico field naming convention:

Block	BLK	South Extension . . .	SX
North Addition . . .	NA	East Extension	EX
South Addition . . .	SA	Island	IS *
East Addition	EA		
West Addition	WA		

* Abbreviated only when the field name exceeds 26 characters.

For example, High Island East Addition South Extension Block A376 is abbreviated HIGH ISLAND EA SX BLK A376.

Special Naming Conventions

Some States regard reservoirs as fields and keep their records on that basis (*e.g.*, Texas and New Mexico). The FCML does not follow the State conventions in these instances. In Texas, for example, State publications list PARKER (PENNSYLVANIAN) and PARKER (WOLFCAMP) as

distinct fields. But PARKER is actually the name of the field using the EIA definition, and PENNSYLVANIAN and WOLFCAMP are the names of reservoirs in the field. The FCML lists only PARKER.

The MMS quarterly publication *OCS Operations Field Directory, Gulf of Mexico OCS Region* is the primary source for Federal offshore fields in the Gulf of Mexico. This publication and the MMS computer file on which it is based do not use subarea identifiers such as the *SOUTH ADDITION*, although maps of the region still carry these subareas. For example, whereas the MMS carries the name WEST CAMERON BLOCK 617, the FCML carries the field name as WEST CAMERON SA BLK 617, where SA is the abbreviation for SOUTH ADDITION.

Reused Field Names

Some States occasionally reuse field names in areas other than the original field location. This situation is handled on the FCML by indicating (OLD) and (NEW) after the field name, with each being assigned a different field code.

Invalid Field Record Procedures

Field records are removed from the FCML when they are found to be incorrect for one of the following reasons:

- The field name as it appears was never approved by the relevant naming authority; *i.e.*, it could have been a misspelled field name or the name of a producing unit, well, lease or offshore platform.
- County or State location data are incorrect.
- Two separate field codes were assigned to the same field name.

When research on a **NISP** field record determines that one of those reasons applies to a field or field alias record, the record type is changed to **INVALID**. Invalid field records appear in the Invalid Field Record List Updates section of the FCML publication for the year in which they have been designated **INVALID**. They will not appear in subsequent years. A cumulative list of **INVALID** records accompanies the electronic version of the FCML.

3. User's Guide

Field Code Master List

Entries in the Oil and Gas Field Code Master List (FCML) are sorted alphabetically by State and alphabetically by field name within a State. When a field occurs in more than one county or, more accurately, when a field name is used in more than one county, the field is shown listed in each county. Fields that occur in multiple States are listed in each State. Fields in the Federal Offshore are listed separately, appearing after Wyoming.

An example page layout is presented in Figure 2 on page 14. Each master field record occupies one line except for records accompanied by a "Remark", which appears on a second line. Each alias field record occupies two lines. A brief description of each data item follows.

Master Field Record

Item 1, FIELD CODE. The six-digit field name code assigned to this field name.

Item 2, FIELD NAME. The field name (26-character limit).

Item 3, STATE POSTAL ABBREVIATION AND STATE SUBDIVISION CODE. The four-character code indicating the State and State subdivision. The first two positions are the 2-letter State postal abbreviation. The last two positions represent an EIA two-digit subdivision code, used only in Alaska, California, Louisiana, New Mexico, Texas, and in offshore areas to designate State and Federal waters. Table 2 on page 15 presents the State and subdivision codes. Figures 4 through 8, at the end of the Users' Guide, present maps of the five States for which onshore subdivision codes apply.

Item 4, COUNTY CODE. The three-character code for the county or parish. For all States except Alaska this is the Federal Information Processing Standards (FIPS) county code, as presented in FIPS publication 6-3 dated December 15, 1979, and its amendments. For Alaska, the FCML uses the U.S. Geological Survey 1° x 3° quadrangles in lieu of counties. The American Petroleum Institute has produced and assigned three-digit pseudo-county codes for each quadrangle, and the FCML uses these codes. Table 3 on Page 16 lists the Alaska quadrangle names and pseudo-county codes. For State and Federal offshore areas, the following county codes are defined: Offshore-State, 990; Offshore-Federal, 995; Offshore-General, 999.

Item 5, COUNTY NAME. The county or parish name (23-character limit) as defined in FIPS publication 6-3 for all State onshore areas except Alaska. For Alaska, the FCML uses names associated with the USGS 1° x 3° quadrangles. If the field is in an offshore area, see the list at the end of Item 4 above.

Item 6, FIELD DISCOVERY YEAR. The four-digit year of first discovery of oil or gas in this field, if it is known. In the case of combined fields, this is the earliest date among the formerly separate fields.

Item 7, FIELD TYPE. A three-character block giving the type of hydrocarbon found in the field using the symbols defined below.

Symbol	Meaning of Symbol
ONA	Oil, nonassociated gas, and associated-dissolved gas are present.
ON	Oil and nonassociated gas present; associated-dissolved gas absent.
N	Nonassociated gas present; oil and associated-dissolved gas absent.
O	Oil present; nonassociated gas and associated-dissolved gas absent.
OA	Oil and associated-dissolved gas present; nonassociated gas absent.
Blank	Type of hydrocarbon is unknown.

Item 8, REMARKS. This is a 23-character entry specifying an attribute of the field. Common remarks are:

AKA	Field is also called by another name, <i>i.e.</i> , Also Known As. The year (YY) it became known as this field also may shown (AKA JOHN SMITH 71).
COMB	Field combined with another field. The year (YY) also may be shown after the combined field code (COMB 123456 78).
LBI	Although listed in State offshore, this field and block are located Landward of the Barrier Islands (see BRETON SOUND BLK 18).
PBI	Used when referring to offshore blocks. Part of Block In will reference another offshore field code (PBI 921300) in which a portion of this block is included (<i>i.e.</i> , portions of this block occur in two different fields).

STOR Field used to store natural gas or it is a DOE strategic oil reserve. The storage field will be for gas unless the REMARKS section includes an entry such as DOE OIL. The year (YY) it was designated a storage field is shown in parentheses following the STOR label (STOR (69) AQF). AQF is used in conjunction with STOR to signify an aquifer gas storage field. Similarly, SALT signifies a storage field developed in a salt formation. ABD signifies the abandonment of storage operations.

UNIT An area made up of a group of leases (either State or Federal). It may or may not include a field and it may be composed of one or more fields.

Alias Field Record

Item 1, ALIAS FIELD CODE. The six-digit field name code assigned to this alias field name, printed in *italics*.

Item 2, ALIAS FIELD NAME. The alias field name (26-character limit), printed in *italics*.

Item 3, STATE POSTAL ABBREVIATION and STATE SUBDIVISION CODE. Same as Master Field Record, *Item 3*.

Item 4, COUNTY CODE. Same as Master Field Record, *Item 4*.

Item 5, COUNTY NAME. Same as Master Field Record, *Item 5*.

Item 6, CROSS-REFERENCE. This is the identification of the master field code and field name *which should be used in place of the alias name listed in Item 2 of this record*. This item consists of the label "Alias For:" followed by the correct six-digit field name code and the correct (*i.e.*, current) field name printed in **bold** type.

Item 7, ALIAS TYPE. The code indicating type of alias (five-character limit). It is present only for alias fields. The types of alias codes are:

ALTER This field name is an alternative for the official field name. The correct name and code follow "Alias For:".

BLOCK This offshore field extends into more than one offshore block. This offshore block name is not the one for which the field is named. The block for which the field is named follows "Alias For:".

COMB This field has been combined with another field which is listed after "Alias For:".

MULTI This offshore lease block has portions of two or more fields in it. In the FCML, the record is listed

once for each field to which it is aliased so that appropriate cross reference is made.

RENAM This field has been renamed. The new name follows "Alias For:".

SPLIT This field has been split into two or more fields, none of which retains this name. One of the new fields is listed after "Alias For:". Contact EIA for the additional fields and information relating to this alias field.

Field Code Index

In the Field Code Index, the field codes, State abbreviations, and associated field names are listed in ascending field code order. If a field name is used in more than one State, the names are sorted in alphabetic, State abbreviation order. All master and alias field names can be determined if their field code is known.

The field codes are arranged in four columns per page, as shown in Figure 3 on page 17. As the six-digit field code relates directly to the particular field name, there is only one listing in this section per State/field code combination irrespective of the number of counties within that State in which it occurs.

The Index is intended for quick reference only. All detailed information is included in the Oil and Gas Field Code Master List section. The Field Code Index does not appear in *Oil and Gas Field Code Master List Updates*.

Coalbed Methane Field List

A dramatic rise in coalbed methane's share of natural gas production has heightened interest in those fields with coalbed methane potential. In Table 4 on page 18, Coalbed Methane Fields, the field name, field code, county code and name, and State are given for those coalbed methane fields currently productive or with drilling activity.

Active Gas Storage Fields

Gas storage fields have been developed in many States. Many of them were developed in existing oil and/or gas fields. All active gas storage field names in use by field naming authorities are listed in Table 5 on page 20. In certain States, the storage portion of a field or pool has been given a different name. In this case, the storage field name is carried on the FCML as an alias to the official field name. The storage field names that are aliases are listed in both Table 5

and the FCML in *italics*. These alias field names may only be used in filing Form EIA-191, "Monthly Underground Gas Storage Report".

Fields Located in Multiple Jurisdictions

Table 6, Fields Located in Multiple Jurisdictions, on page 25, indicates those oil and/or gas fields which cross State boundaries. In developing the summary statistics on page 1, a field is only counted once, no matter how many counties or States it occurs in.

Outer Continental Shelf Planning Areas

Gulf of Mexico Outer Continental Shelf statistics published by the Minerals Management Service (MMS) follow the boundary lines of the Western, Central, and Eastern MMS Planning Areas, shown respectively in Figures 9, 10, and 11. In order that reports developed from the EIA publication *U.S. Crude Oil, Natural Gas, and Natural Gas Liquids Reserves* track reporting by the MMS, fields currently found in either the Garden Banks or Keathley Canyon leasing areas are listed in the FCML under Texas Federal Offshore, rather than under Louisiana-South Federal Offshore.

Table 2. State Abbreviations and Geographic Subdivision Codes

State Name and Geographic Subdivisions	State Abbreviation	Subdivision Code	State Name and Geographic Subdivisions	State Abbreviation	Subdivision Code
Alabama-Onshore	AL	—	Nebraska	NE	—
Alabama-State Offshore	AL	05	Nevada	NV	—
Alaska-North Onshore and Offshore	AK	50	New Hampshire	NH	—
Alaska-South Onshore	AK	10	New Jersey	NJ	—
Alaska-South State Offshore	AK	05	New Mexico-East	NM	10
Alaska-South Federal Offshore	AK	00	New Mexico-West	NM	50
Arizona	AZ	—	New York	NY	—
Arkansas	AR	—	North Carolina	NC	—
California-Coastal Region Onshore	CA	50	North Dakota	ND	—
California-Los Angeles Basin Onshore	CA	90	Ohio	OH	—
California-San Joaquin Basin Onshore	CA	10	Oklahoma	OK	—
California-State Offshore	CA	05	Oregon	OR	—
California-Federal Offshore	CA	00	Pennsylvania	PA	—
Colorado	CO	—	Rhode Island	RI	—
Connecticut	CT	—	South Carolina	SC	—
Delaware	DE	—	South Dakota	SD	—
District of Columbia	DC	—	Tennessee	TN	—
Florida-Onshore	FL	—	Texas RRC District 1	TX	10
Florida-State Offshore	FL	05	Texas RRC District 2 Onshore	TX	20
Georgia	GA	—	Texas RRC District 3 Onshore	TX	30
Hawaii	HI	—	Texas RRC District 4 Onshore	TX	40
Idaho	ID	—	Texas RRC District 5	TX	50
Illinois	IL	—	Texas RRC District 6	TX	60
Indiana	IN	—	Texas RRC District 7B	TX	70
Iowa	IA	—	Texas RRC District 7C	TX	75
Kansas	KS	—	Texas RRC District 8	TX	80
Kentucky	KY	—	Texas RRC District 8A	TX	85
Louisiana-North	LA	50	Texas RRC District 9	TX	90
Louisiana-South Onshore	LA	10	Texas RRC District 10	TX	95
Louisiana-South State Offshore	LA	05	Texas-State Offshore	TX	05
Louisiana-South Federal Offshore	LA	00	Texas-Federal Offshore	TX	00
Maine	ME	—	Utah	UT	—
Maryland	MD	—	Vermont	VT	—
Massachusetts	MA	—	Virginia	VA	—
Michigan	MI	—	Washington	WA	—
Minnesota	MN	—	West Virginia	WV	—
Mississippi-Onshore	MS	—	Wisconsin	WI	—
Mississippi-State Offshore	MS	05	Wyoming	WY	—
Missouri	MO	—	Atlantic Coast-Federal Offshore	AC	00
Montana	MT	—	Other Gulf-Federal Offshore	OG	00

— = Not applicable.

Sources: National Bureau of Standards, U.S. Department of Commerce, FIPS PUB 6-3, *Counties and County Equivalents of the States of the United States and the District of Columbia*. Energy Information Administration, Office of Oil and Gas.

Table 3. U.S. Geological Survey Alaska Quadrangles and Associated Codes

Quadrangle	Quad Code	Quadrangle	Quad Code	Quadrangle	Quad Code	Quadrangle	Quad Code
Adak	001	Dillingham	077	Marshall	157	Seward	233
Afognak	003	Dixon Entrance	079	McCarthy	159	Shishmaref	235
Ambler River	005	Eagle	081	McGrath	161	Shungnak	237
Amukta	007	Fairbanks	083	Meade River	163	Simeonof Island	239
Anchorage	009	False Pass	087	Medfra	165	Sitka	241
Arctic	011	Flaxman Island	089	Melozitna	167	Skagway	243
Atka	013	Fort Yukon	091	Middleton Island	169	Sleetmute	245
Atlin	015	Cold Bay	093	Misheguk Mtn	171	Solomon	247
Attu	017	Gareloi Island	095	Mt Fairweather	085	St Lawrence	253
Baird Inlet	019	Goodnews	097	Mt Hayes	173	St Matthew	249
Baird Mts	021	Gulkana	099	Mt Katmai	175	St Michael	255
Barrow	023	Hagemeister Island	101	Mt McKinley	177	Stepovak Bay	251
Barter Island	025	Harrison Bay	103	Mt Michelson	179	Sumdum	257
Beaver	027	Healy	105	Mt St Elias	181	Survey Pass	259
Beechey Point	029	Holy Cross	107	Nabesna	183	Sutwik Island	261
Bendeleben	031	Hooper Bay	109	Naknek	185	Table Mtn	263
Bering Glacier	033	Howard Pass	111	Noatak	187	Taku River	265
Bethel	035	Hughes	113	Nome	189	Talkeetna	267
Bettles	037	Icy Bay	115	Norton Bay	191	Talkeetna Mts	269
Big Delta	039	Iditarod	117	Nulato	193	Tanacross	271
Black	041	Ikpiqpuq River	119	Nunivak Island	195	Tanana	273
Black River	043	Iliamna	121	Nushagak Bay	197	Taylor Mts	275
Blying Sound	045	Juneau	123	Ophir	199	Teller	277
Bradfield Canal	047	Kaguyak	125	Petersburg	201	Teshkepuk	279
Bristol Bay	049	Kantishna River	127	Philip Smith Mts	203	Trinity Islands	281
Candle	051	Karluk	129	Point Hope	205	Tyonek	283
Cape Mendenhall	053	Kateel River	131	Point Lay	207	Ugashik	285
Chandalar	055	Kenai	133	Port Alexander	209	Umiat	287
Chandler Lake	057	Ketchikan	135	Port Moller	211	Umnak	289
Charley River	059	Killik River	137	Pribilof Islands	213	Unalakleet	291
Chignik	061	Kiska	139	Prince Rupert	215	Unalaska	293
Christian	063	Kodiak	141	Rat Islands	217	Unimak	295
Circle	065	Kotzebue	143	Ruby	219	Utukok River	297
Cold Bay	093	Kuskokwim Bay	145	Russian Mission	221	Valdez	299
Coleen	067	Kwiguk	147	Sagavanirktok	223	Wainwright	301
Cordova	069	Lake Clark	149	Samalga Island	225	Wiseman	303
Craig	071	Lime Hills	151	Seguam	227	Yakutat	305
De Long Mts	073	Livengood	153	Selawik	229		
Demarcation Point	075	Lookout Ridge	155	Seldovia	231		

Note: The State of Alaska does not have counties that can be used for field identification. Areas identified by U. S. Geological Survey quadrangles have been assigned codes by the American Petroleum Institute for use as pseudo-county codes.

Source: The API Well Number and Standard State and County Numeric Codes Including Offshore Waters. API Bulletin D12A, January 1979. American Petroleum Institute, Washington, DC.

Table 4. Coalbed Methane Fields

State and Field Name	Field Code	County Code	County Name	State and Field Name	Field Code	County Code	County Name
Alabama				Parachute	009661	045	Garfield
Big Sandy Creek Coal Degas	013337	125	Tuscaloosa	Pinyon Ridge	014271	103	Rio Blanco
Blue Creek Coal Degas	012124	125	Tuscaloosa	Raton	015810	071	Las Animas
Boone Creek Coal Degas	013341	125	Tuscaloosa	Red Mesa	591452	067	La Plata
Brookwood Coal Degasificat	000311	073	Jefferson	Rulison	618549	045	Garfield
Brookwood Coal Degasificat	000311	125	Tuscaloosa	Shale Ridge South	013929	077	Mesa
Cedar Cove Coal Degas	008416	125	Tuscaloosa	Skinner Ridge	013633	045	Garfield
Deerlick Creek Coal Degas	008478	125	Tuscaloosa	Three Bridges	012076	055	Huerfano
Fairview	233940	075	Lamar	West Side Canal	760277	081	Moffat
Gurnee Coal Degas	013330	007	Bibb	White River	764757	103	Rio Blanco
Gurnee Coal Degas	013330	117	Shelby	Illinois			
Holt Coal Degasification	003623	125	Tuscaloosa	Eldorado Consol	218392	165	Saline
Little Buck Creek Coal Deg	014254	063	Greene	Indiana			
Little Buck Creek Coal Deg	014254	125	Tuscaloosa	Bicknell	060509	083	Knox
Little Sandy Creek Degas	013172	125	Tuscaloosa	Sandford	630765	167	Vigo
Moundville Coal Degas	013503	063	Greene	Sullivan Consol	687396	153	Sullivan
Moundville Coal Degas	013503	065	Hale	Kansas			
Moundville Coal Degas	013503	125	Tuscaloosa	Brewster	091247	125	Montgomery
Oak Grove Coal Degas	003662	073	Jefferson	Fairmount Townsite	010916	103	Leavenworth
Oak Grove Coal Degas	003662	125	Tuscaloosa	Frasier	255736	019	Chautauqua
Peterson Coal Degas	008595	125	Tuscaloosa	Fredonia	256542	205	Wilson
Pleasant Grove Coal Degas	003670	073	Jefferson	Hale-Inge	299507	019	Chautauqua
Robinsons Bend Coal Degas	013516	125	Tuscaloosa	Hale-Inge	299507	049	Elk
Scottsville Coal Degas	013800	007	Bibb	Jefferson-Sycamore	356998	125	Montgomery
Taylor Creek Coal Degas	014136	063	Greene	Mound City	488254	107	Linn
Taylor Creek Coal Degas	014136	125	Tuscaloosa	Neodesha	502355	125	Montgomery
Thornton Creek Coal Degas	015246	125	Tuscaloosa	Neodesha	502355	205	Wilson
White Oak Creek Coal Degas	013106	073	Jefferson	Peru-Sedan	551823	019	Chautauqua
White Oak Creek Coal Degas	013106	125	Tuscaloosa	Sycamore Valley	006462	125	Montgomery
White Oak Creek Coal Degas	013106	127	Walker	Sycamore Valley East	008963	125	Montgomery
Wolf Creek Coal Degas	013446	125	Tuscaloosa	Tyro	724826	125	Montgomery
Colorado				Valeda	732170	099	Labette
Apache Canyon	013811	071	Las Animas	Wayside-Havana	753309	019	Chautauqua
Bronco Flats	000140	077	Mesa	Wayside-Havana	753309	125	Montgomery
Buzzard Creek	108313	077	Mesa	Kentucky			
Coal Gulch	149989	077	Mesa	Sebree Consol	641910	233	Webster
Craig	168047	081	Moffat	New Mexico			
Divide Creek	193533	045	Garfield	Aztec	032800	045	San Juan
Divide Creek	193533	077	Mesa	Aztec North	032831	045	San Juan
Gasaway	267355	045	Garfield	Basin	042233	039	Rio Arriba
Grand Valley	284772	045	Garfield	Basin	042233	043	Sandoval
Hunters Canyon	339888	077	Mesa	Basin	042233	045	San Juan
Ignacio-Blanco	343874	007	Archuleta				
Ignacio-Blanco	343874	067	La Plata				

Table 4. Coalbed Methane Fields (Continued)

State and Field Name	Field Code	County Code	County Name	State and Field Name	Field Code	County Code	County Name
Bisti	066864	045	San Juan	Drunkards Wash	014840	007	Carbon
Blanco	070724	045	San Juan	Virginia			
Blanco South	070848	039	Rio Arriba	Glick	277145	027	Buchanan
Cedar Hill	127962	045	San Juan	Keen Mountain	001394	027	Buchanan
Escrito	227948	039	Rio Arriba	Nora	511254	051	Dickenson
Fulcher-Kutz	259658	045	San Juan	Nora	511254	167	Russell
Harper Hill	306924	045	San Juan	Nora	511254	195	Wise
Jasis Canyon	355315	045	San Juan	Oakwood	518178	027	Buchanan
Kutz	388974	045	San Juan	West Virginia			
Lybrook	435372	045	San Juan	Big Run-Birchfield	063361	103	Wetzel
Mt Nebo	491014	045	San Juan	Wyoming			
Pinon North	557796	045	San Juan	Bone Pile	080017	005	Campbell
San Juan	003683	045	San Juan	Breen	090658	005	Campbell
WAW	002964	045	San Juan	Caballo - Fort Union	015797	005	Campbell
Oklahoma				Clubhouse	010336	005	Campbell
Brooken	094054	121	Pittsburg	Coalmine	014867	005	Campbell
Kinta	380610	121	Pittsburg	Dixon	193998	007	Carbon
Pine Hollow South	556791	121	Pittsburg	Hartzog Draw	308943	005	Campbell
Quinton District	580321	121	Pittsburg	Hawk Point	010459	005	Campbell
Spiro SE	669865	079	Le Flore	Kingsbury Creek	380145	005	Campbell
Wilburton	767826	121	Pittsburg	Lynde	014868	005	Campbell
Pennsylvania				Lynde South	014869	005	Campbell
Blairsville	070166	063	Indiana	Lynde West	014870	005	Campbell
Gump	006205	059	Greene	May Butte	014871	005	Campbell
Lagonda	394515	125	Washington	Maysdorf	455700	005	Campbell
Mayfield	455469	129	Westmoreland	Meadowlark	014872	005	Campbell
New Freeport	503770	059	Greene	Mill-Gillette	474370	005	Campbell
Oakford	517434	129	Westmoreland	Oedekoven	520069	005	Campbell
Waltersburg	007359	051	Fayette	Ranchhouse	014873	005	Campbell
Waynesburg	007266	059	Greene	Rawhide Butte	013282	005	Campbell
Utah				Recluse	589685	005	Campbell
Buzzard Bench	007833	015	Emery	Route 59	014874	005	Campbell
Castlegate	014836	007	Carbon	Wolff	000853	005	Campbell

Table 5. Active Gas Storage Fields

State and Field Name	Field Code	State/ Sub	County Code	County Name	State and Field Name	Field Code	State/ Sub	County Code	County Name
Alabama					Shanghai	647599	IL	131	Mercer
Bay Gas Salt Dome Gsf#1	014887	AL	129	Washington	Shanghai	647599	IL	187	Warren
Mcintosh	460979	AL	129	Washington	St Jacob	624627	IL	119	Madison
Arkansas					Tilden North	708099	IL	163	St Clair
Jethro	358641	AR	047	Franklin	Tilden North	708099	IL	189	Washington
Lavaca Deep	404414	AR	131	Sebastian	Troy Grove	718974	IL	099	La Salle
Watalula	750922	AR	047	Franklin	Tuscola	722733	IL	041	Douglas
White Oak	764509	AR	047	Franklin	Waterloo	751387	IL	133	Monroe
California					Waverly	752720	IL	137	Morgan
Aliso Canyon	010456	CA50	037	Los Angeles	Indiana				
Honor Rancho	330773	CA50	037	Los Angeles	Arney	025507	IN	119	Owen
Kirby Hill	381385	CA10	095	Solano	Dixon	193998	IN	055	Greene
La Goleta	391270	CA50	083	Santa Barbara	<i>iro East</i>				<i>i e</i>
Los Medanos	427868	CA10	013	Contra Costa	Glendale North	276494	IN	027	Daviess
Lost Hills	428333	CA10	029	Kern	Greensburg	289360	IN	031	Decatur
Mcdonald Island	459290	CA10	077	San Joaquin	Howesville	335454	IN	055	Greene
Montebello	482643	CA90	037	Los Angeles	Huntingburg South	340074	IN	037	Dubois
Playa Del Rey	559845	CA90	037	Los Angeles	Laconia	393595	IN	061	Harrison
Pleasant Creek	559938	CA10	113	Yolo	<i>a e of the oods</i>				<i>arshall</i>
Whittier	766462	CA90	037	Los Angeles	Lawrenceburg	405406	IN	029	Dearborn
Colorado					Leesville	408220	IN	093	Lawrence
Asbury Creek	027088	CO	077	Mesa	Lonetree	425140	IN	055	Greene
Flank	243676	CO	009	Baca	<i>id ay</i>				<i>S encer</i>
Fort Morgan	250574	CO	087	Morgan	Midway Consol	472760	IN	147	Spencer
Latigo	403515	CO	005	Arapahoe	Mineral City	476691	IN	055	Greene
Leyden Coal Mine	412715	CO	059	Jefferson	<i>onroe City</i>				<i>no</i>
Roundup	616060	CO	087	Morgan	Montezuma	482829	IN	165	Vermillion
Wolf Creek	776236	CO	097	Pitkin	Oaktown (New)	517999	IN	083	Knox
Young	787893	CO	087	Morgan	Oaktown (New)	517999	IN	153	Sullivan
Illinois					Oliver	523975	IN	129	Posey
Ancona	012886	IL	099	La Salle	Royal Center	617083	IN	017	Cass
Ancona	012886	IL	105	Livingston	Royal Center	617083	IN	049	Fulton
Ashmore	028049	IL	023	Clark	Royal Center	617083	IN	131	Pulaski
Ashmore	028049	IL	029	Coles	Simpson Chapel	657104	IN	055	Greene
Centralia	130225	IL	121	Marion	State Line	677538	IN	167	Vigo
Centralia East	130287	IL	121	Marion	Switz City	693201	IN	055	Greene
Cooks Mills Consol	159258	IL	029	Coles	Unionport South	009964	IN	135	Randolph
Cooks Mills Consol	159258	IL	041	Douglas	Unionville	728572	IN	105	Monroe
Corinth	161552	IL	199	Williamson	Westpoint	761207	IN	157	Tiptecanoe
Crab Orchard	167830	IL	199	Williamson	Wilfred	768942	IN	153	Sullivan
Crescent City	169535	IL	075	Iroquois	Wolcott	776143	IN	181	White
Eden	213408	IL	157	Randolph	Wolcott North	009982	IN	181	White
Eden South	012956	IL	157	Randolph	Worthington	779801	IN	055	Greene
Freeburg	256635	IL	163	St Clair	Iowa				
Gillespie-Benld	272765	IL	117	Macoupin	Cairo	112376	IA	115	Louisa
Glasford	275192	IL	143	Peoria	Columbus City	155321	IA	115	Louisa
Herscher	318751	IL	091	Kankakee	Keota	375936	IA	183	Washington
Herscher NW	318782	IL	091	Kankakee	Redfield	592506	IA	049	Dallas
Hillsboro	323394	IL	135	Montgomery	Vincent	739100	IA	091	Humboldt
Hookdale	331052	IL	005	Bond	Vincent	739100	IA	187	Webster
Hudson	336757	IL	113	Mclean	Vincent	739100	IA	197	Wright
Lake Bloomington	395393	IL	113	Mclean	Kansas				
Lexington	412560	IL	113	Mclean	Alden	008441	KS	159	Rice
Lincoln	414351	IL	107	Logan	Boehm	077715	KS	129	Morton
Loudon	009833	IL	051	Fayette	Borchers North	081683	KS	119	Meade
<i>ahomet</i>				<i>Cham ai n</i>	Brehm	090720	KS	151	Pratt
Manlove	009843	IL	019	Champaign	<i>uffalo</i>		S		<i>ilson</i>
Pecatonica	546894	IL	201	Winnebago	<i>Colony</i>		S		<i>nderson</i>
Pontiac	565100	IL	105	Livingston	Craig-Monticello	168109	KS	091	Johnson
Sciota	639732	IL	109	Mcdonough	Cunningham	174542	KS	095	Kingman
					Cunningham	174542	KS	151	Pratt

Note: Alias field names are in italics.

Table 5. Active Gas Storage Fields (Continued)

State and Field Name	Field Code	State/ Sub	County Code	County Name	State and Field Name	Field Code	State/ Sub	County Code	County Name
Elk City	219074	KS	019	Chautauqua	Napoleonville	498735	LA10	007	Assumption
Elk City	219074	KS	049	Elk	Ruston	620502	LA50	061	Lincoln
Elk City	219074	KS	125	Montgomery	Sorrento	666331	LA10	005	Ascension
Fredonia	256542	KS	205	Wilson	Unionville	728572	LA50	061	Lincoln
Liberty North	413390	KS	125	Montgomery	Unionville	728572	LA50	111	Union
Lyons	436364	KS	159	Rice	Washington	750240	LA10	097	St Landry
<i>McClouth</i>		S		<i>Jefferson</i>					
McClouth	462049	KS	103	Leavenworth	Maryland				
Piqua	558155	KS	001	Allen	Accident	002210	MD	023	Garrett
Piqua	558155	KS	207	Woodson	Michigan				
Richfield	599559	KS	129	Morton	Austin	030901	MI	107	Mecosta
Welda North	756526	KS	003	Anderson	Belle River Mills	053820	MI	147	St Clair
Welda South	756557	KS	003	Anderson	Blue Lake 18-28N-5W A	002837	MI	079	Kalkaska
Kentucky					Broomfield Deerfield	074351	MI	073	Isabella
Adair North	003171	KY	091	Hancock	Capac	118576	MI	147	St Clair
Anton	021244	KY	107	Hopkins	Charlton 01-30N-1W	002860	MI	137	Otsego
Barnsley	040094	KY	107	Hopkins	Chester Sec 15	003494	MI	137	Otsego
<i>on Arbor</i>				<i>Daviess</i>	Cold Springs 12-28N-6W	002922	MI	079	Kalkaska
Canada Mountain	004833	KY	013	Bell	Cold Springs 31-28N-6W	009713	MI	079	Kalkaska
Cecilia	004841	KY	093	Hardin	Coldwater	152252	MI	073	Isabella
Center	129264	KY	009	Barren	Collin	153988	MI	147	St Clair
Center	129264	KY	087	Green	Columbus	155290	MI	147	St Clair
Center	129264	KY	169	Metcalfe	Columbus West	155538	MI	147	St Clair
Crofton East	009721	KY	047	Christian	Cranberry Lake	168233	MI	035	Clare
Dixie	193812	KY	101	Henderson	Cranberry Lake	168233	MI	113	Missaukee
Doe Run	194968	KY	163	Meade	Croton	172387	MI	123	Newaygo
Eagle Creek	210463	KY	081	Grant	Excelsior 06-27N-6W	009735	MI	079	Kalkaska
Eagle Creek	210463	KY	187	Owen	Four Corners	252434	MI	147	St Clair
<i>East Diamond</i>				<i>o ins</i>	Freeman-Lincoln	256790	MI	035	Clare
Flint Hill Consol	012752	KY	093	Hardin	Goodwell	280385	MI	123	Newaygo
Graham Lake	283842	KY	177	Muhlenberg	Hessen	319123	MI	147	St Clair
Grandview	284927	KY	059	Daviess	Howell	335361	MI	093	Livingston
Greenville	289577	KY	177	Muhlenberg	Ira	347913	MI	147	St Clair
<i>reenville est</i>				<i>uhlenber</i>	Kalkaska 01-27N-7W	009799	MI	079	Kalkaska
Hanson	303692	KY	107	Hopkins	Lacey Station	393525	MI	015	Barry
Hawesville NW	011146	KY	091	Hancock	Lee 02-1W-5W	003265	MI	025	Calhoun
<i>ic ory School</i>				<i>Daviess</i>	Lee 11-1S-5W	003273	MI	025	Calhoun
Kettle Island	005569	KY	013	Bell	Lee 16	009823	MI	025	Calhoun
Kirkwood Springs	381788	KY	107	Hopkins	Lenox	410204	MI	099	Macomb
Magnolia	440775	KY	087	Green	Leonard	410731	MI	125	Oakland
Magnolia	440775	KY	099	Hart	<i>oreola</i>				<i>sceola</i>
Magnolia	440775	KY	123	Larue	Marion(Winterfield)	447874	MI	035	Clare
Midland	472280	KY	177	Muhlenberg	Marion(Winterfield)	447874	MI	133	Osceola
Mt Olive Church	009874	KY	227	Warren	Marysville-Morton	009849	MI	147	St Clair
Muldrough	493184	KY	163	Meade	Muttonville	495943	MI	099	Macomb
Owensboro West	532167	KY	059	Daviess	Northville	513052	MI	125	Oakland
<i>Slau hters East</i>				<i>o ins</i>	Northville	513052	MI	161	Washtenaw
St Charles	673074	KY	107	Hopkins	Northville	513052	MI	163	Wayne
Louisiana					<i>or ich</i>				<i>e ay o</i>
Bear Creek	048643	LA50	013	Bienville	Orient	527889	MI	035	Clare
Egan	215648	LA10	001	Acadia	Orient	527889	MI	133	Osceola
Epps	226762	LA50	035	East Carroll	Overisel	531485	MI	005	Allegan
Epps	226762	LA50	123	West Carroll	Partello	541445	MI	025	Calhoun
Garden Island Bay	265340	LA10	075	Plaquemines	Puttygut	575943	MI	147	St Clair
Grand Bayou	284214	LA10	007	Assumption	Rapid River 35-28N-7W	003354	MI	079	Kalkaska
Hester	319154	LA10	093	St James	Ray	588018	MI	099	Macomb
Holly	328510	LA50	031	De Soto	Reed City	593157	MI	085	Lake
Jefferson Island	356843	LA10	045	Iberia	Reed City	593157	MI	133	Osceola
Jefferson Island	356843	LA10	113	Vermilion	Riverside	603992	MI	035	Clare
Lake Bistineau	395331	LA50	013	Bienville	Riverside	603992	MI	113	Missaukee
Lake Bistineau	395331	LA50	015	Bossier	Rolland	611379	MI	073	Isabella
Lake Bistineau	395331	LA50	119	Webster	Salem	625030	MI	005	Allegan
					Salem	625030	MI	139	Ottawa

Note: Alias field names are in italics.

Table 5. Active Gas Storage Fields (Continued)

State and Field Name	Field Code	State/ Sub	County Code	County Name	State and Field Name	Field Code	State/ Sub	County Code	County Name
Shaver (Sumner-New Haven)	648622	MI	057	Gratiot	Greenwood North	290073	NY	101	Steuben
Shaver (Sumner-New Haven)	648622	MI	117	Montcalm	Holland	327673	NY	029	Erie
Six Lakes	658449	MI	073	Isabella	Honeoye	330612	NY	069	Ontario
Six Lakes	658449	MI	107	Mecosta	Independence East	344921	NY	003	Allegany
Six Lakes	658449	MI	117	Montcalm	Independence West	002124	NY	003	Allegany
Swan Creek	691651	MI	147	St Clair	Lawtons	405654	NY	029	Erie
<i>C a a r t S i a e s</i>				<i>ecosta</i>	Nashville	499045	NY	009	Cattaraugus
<i>C a a r t S i a e s</i>				<i>ontcalm</i>	Nashville	499045	NY	013	Chautauqua
Washington Sec 28	003536	MI	099	Macomb	Perrysburg	551296	NY	009	Cattaraugus
Winfield	773189	MI	107	Mecosta	Sheridan	650885	NY	013	Chautauqua
Winfield	773189	MI	117	Montcalm	Tuscarora	722702	NY	101	Steuben
Winterfield	774212	MI	035	Clare	Wayne-Dundee	752910	NY	097	Schuyler
Woodville	778406	MI	123	Newaygo	Woodhull	777445	NY	101	Steuben
					Zoar	792603	NY	029	Erie
Minnesota					Ohio				
Waterville-Waseca	751666	MN	079	Le Sueur	<i>enton</i>				<i>oc in</i>
Waterville-Waseca	751666	MN	131	Rice	Benton	056548	OH	163	Vinton
Waterville-Waseca	751666	MN	161	Waseca	Brinker	092363	OH	029	Columbiana
					Chippewa	139789	OH	169	Wayne
Mississippi					Columbiana	155228	OH	029	Columbiana
Amory	016408	MS	095	Monroe	Crawford	168884	OH	073	Hocking
Eminence	223786	MS	031	Covington	Gabor	262457	OH	169	Wayne
Goodwin	280509	MS	095	Monroe	Guernsey	293778	OH	031	Coshocton
Jackson	353006	MS	049	Hinds	Guernsey	293778	OH	059	Guernsey
Jackson	353006	MS	121	Rankin	Guernsey	293778	OH	119	Muskingum
Muldon	492967	MS	095	Monroe	Holmes	329130	OH	075	Holmes
					<i>aurel</i>				<i>oc in</i>
Missouri					Lorain	427155	OH	093	Lorain
Florissant	002175	MO	183	St Charles	Lucas	432062	OH	005	Ashland
Florissant	002175	MO	189	St Louis	Lucas	432062	OH	139	Richland
					Mcarthur	456438	OH	163	Vinton
Montana					Medina	465281	OH	103	Medina
Box Elder	084938	MT	005	Blaine	Muskie	002010	OH	119	Muskingum
Box Elder	084938	MT	041	Hill	Pavonia	544080	OH	005	Ashland
Cedar Creek	127745	MT	025	Fallon	Pavonia	544080	OH	139	Richland
Cobb	150516	MT	035	Glacier	Perry	550800	OH	127	Perry
Cobb	150516	MT	101	Toole	Stark-Summit	677011	OH	151	Stark
Dry Creek	203602	MT	009	Carbon	Stark-Summit	677011	OH	153	Summit
Elk Basin	218981	MT	009	Carbon	Wayne	752906	OH	005	Ashland
					Wayne	752906	OH	075	Holmes
Nebraska					Wayne	752906	OH	169	Wayne
Huntsman	340291	NE	033	Cheyenne	Weaver	753860	OH	005	Ashland
					Weaver	753860	OH	083	Knox
New Mexico					Weaver	753860	OH	139	Richland
Barker	039257	NM50	045	San Juan	Wellington	757270	OH	093	Lorain
Gramma Ridge	284090	NM10	025	Lea	Wellington	757270	OH	103	Medina
Keyes	377052	NM10	015	Eddy	Zane	790229	OH	119	Muskingum
Rhodes	597885	NM10	025	Lea					
San Ysidro Gsf	011577	NM50	043	Sandoval	Oklahoma				
Vandagriff	733813	NM10	015	Eddy	<i>da</i>				<i>ontotoc</i>
Vandagriff-Keyes	733844	NM10	015	Eddy	<i>artlesville</i>				<i>ashin ton</i>
Washington Ranch	750376	NM10	015	Eddy	Chiles Dome	138766	OK	029	Coal
					Depew	188952	OK	037	Creek
New York					Edmond West	214586	OK	073	Kingfisher
<i>drian</i>				<i>Steuben</i>	Edmond West	214586	OK	083	Logan
Allegany State Park	011014	NY	009	Cattaraugus	Enfisco	225088	OK	113	Osage
Beech Hill	001981	NY	003	Allegany	Greasy Creek	287314	OK	063	Hughes
Bennington	056021	NY	029	Erie	Haskell	309272	OK	101	Muskogee
Bennington	056021	NY	121	Wyoming	Hopeton North	331765	OK	151	Woods
Colden	152221	NY	029	Erie	<i>sa e</i>				<i>sa e</i>
Collins	154050	NY	029	Erie	<i>Sayre</i>				<i>ec ham</i>
Derby	189262	NY	029	Erie	<i>Stuart</i>				<i>ittsbur</i>
<i>Dundee</i>				<i>ates</i>	Ulan East	726712	OK	121	Pittsburg
Greenwood	289918	NY	101	Steuben					

Note: Alias field names are in italics.

Table 5. Active Gas Storage Fields (Continued)

State and Field Name	Field Code	State/ Sub	County Code	County Name	State and Field Name	Field Code	State/ Sub	County Code	County Name
Webb	753953	OK	053	Grant	Oakford	517434	PA	129	Westmoreland
Woolaroc	778871	OK	113	Osage	<i>Is est</i>				<i>El</i>
Oregon					<i>almer Stora e</i>				<i>io a</i>
Mist	478835	OR	009	Columbia	<i>atton</i>				<i>estmoreland</i>
Pennsylvania					Portman	567146	PA	019	Butler
<i>labran</i>				<i>ndiana</i>	Pratt	571347	PA	059	Greene
Artemas	026747	PA	009	Bedford	Pratt	571347	PA	125	Washington
<i>rtemas Stora e</i>				<i>edford</i>	Queen	579391	PA	053	Forest
<i>elmouth</i>				<i>El</i>	Queen	579391	PA	123	Warren
Big Run	063330	PA	033	Clearfield	Rager Mountain	582872	PA	021	Cambria
Big Run	063330	PA	063	Indiana	<i>ush un</i>				<i>ayette</i>
Big Run	063330	PA	065	Jefferson	Sabinsville	623108	PA	105	Potter
<i>lac ha</i>				<i>eeper</i>	Sabinsville	623108	PA	117	Tioga
<i>lac to n</i>				<i>ercer</i>	Saltsburg	627155	PA	063	Indiana
Boone Mountain	081063	PA	033	Clearfield	<i>South end</i>				<i>rmstron</i>
Boone Mountain	081063	PA	047	Elk	<i>South end</i>				<i>ndiana</i>
Brush Run	097742	PA	007	Beaver	<i>S ran le</i>				<i>efferson</i>
Bull Creek	102516	PA	003	Allegheny	St Marys	674345	PA	047	Elk
<i>ullers</i>				<i>efferson</i>	State Line	677538	PA	105	Potter
<i>unola</i>				<i>lle heny</i>	<i>Summit</i>				<i>Erie</i>
<i>unola</i>				<i>ashin ton</i>	<i>S arts</i>				<i>reene</i>
<i>Clar</i>				<i>ndiana</i>	<i>S arts est</i>				<i>reene</i>
<i>Colvin</i>				<i>ashin ton</i>	<i>S ede ill</i>				<i>c ean</i>
Corry	162823	PA	049	Erie	<i>amarac</i>				<i>Clinton</i>
<i>Done al</i>				<i>ashin ton</i>	<i>e e</i>				<i>lle heny</i>
<i>East ranch</i>				<i>c ean</i>	Tioga	709091	PA	117	Tioga
<i>East ranch</i>				<i>arren</i>	<i>rafford</i>				<i>estmoreland</i>
<i>East ranch</i>				<i>c ean</i>	<i>ruittsbur</i>				<i>Clarion</i>
<i>East ranch</i>				<i>arren</i>	Wadsworth-North Oakland	743970	PA	019	Butler
Ellisburg	220996	PA	105	Potter	Webster	754542	PA	129	Westmoreland
<i>air elm</i>				<i>rmstron</i>	<i>ellendorf</i>				<i>c ean</i>
<i>inleyville</i>				<i>lle heny</i>	<i>harton</i>				<i>Cameron</i>
<i>inleyville</i>				<i>ashin ton</i>	<i>harton</i>				<i>otter</i>
Five Forks	243009	PA	009	Bedford	Whitehorn Creek	010238	PA	129	Westmoreland
Frostburg	259010	PA	065	Jefferson	Wolf Creek	776236	PA	121	Venango
<i>albraith</i>				<i>efferson</i>	Tennessee				
<i>amble ayden</i>				<i>lle heny</i>	Lick Branch	413514	Tn	151	Scott
<i>reenlic</i>				<i>Clinton</i>	Texas				
<i>reenlic</i>				<i>otter</i>	Bammel	037242	TX30	201	Harris
Harrison	307691	PA	105	Potter	Bethel	058997	TX60	001	Anderson
<i>averline</i>				<i>lle heny</i>	Bethel Dome	009684	TX60	001	Anderson
<i>eard</i>				<i>ashin ton</i>	Boling	078707	TX30	481	Wharton
Hebron	313512	PA	105	Potter	Bryson	098873	TX90	237	Jack
<i>enderson</i>				<i>ercer</i>	Bryson South	099028	TX90	237	Jack
<i>enderson</i>				<i>enan o</i>	Burnell	105089	TX20	025	Bee
<i>u hes</i>				<i>utler</i>	Burnell	105089	TX20	255	Karnes
<i>unters Cave</i>				<i>reene</i>	Butler	107383	TX50	161	Freestone
<i>r in</i>				<i>estmoreland</i>	Clear Lake	147214	TX30	201	Harris
<i>eelor</i>				<i>c ean</i>	Clear Lake West	147307	TX30	201	Harris
<i>inter</i>				<i>ndiana</i>	Clemens	147890	TX30	039	Brazoria
<i>irby</i>				<i>reene</i>	Clemens NE	147891	TX30	039	Brazoria
Leidy	408747	PA	035	Clinton	Cliffside	148547	TX95	375	Potter
Leidy	408747	PA	105	Potter	Dayton North	183162	TX30	291	Liberty
<i>a orsville</i>				<i>reene</i>	De Leon	183713	TX70	093	Comanche
<i>a orsville</i>				<i>ashin ton</i>	Felmac	238583	TX85	165	Gaines
<i>ar le</i>				<i>efferson</i>	Fulshear	260278	TX30	157	Fort Bend
<i>c inley</i>				<i>El</i>	Hilbig	322309	TX10	021	Bastrop
<i>eade un</i>				<i>c ean</i>	Hill	322712	TX70	133	Eastland
<i>ee er</i>				<i>io a</i>	Janellen	354742	TX70	049	Brown
<i>ohan un</i>				<i>El</i>	Katy	370123	TX30	157	Fort Bend
<i>urrysville</i>				<i>lle heny</i>	La-Pan	391797	TX90	077	Clay

Note: Alias field names are in italics.

Table 5. Active Gas Storage Fields (Continued)

State and Field Name	Field Code	State/ Sub	County Code	County Name	State and Field Name	Field Code	State/ Sub	County Code	County Name
Lake Dallas	396106	TX90	121	Denton	Gauley Mountain	267851	WV	067	Nicholas
Lansing North	401810	TX60	203	Harrison	Glady	274789	WV	075	Pocahontas
Lee Ray	407662	TX70	429	Stephens	Glady	274789	WV	083	Randolph
Lone Camp	424179	TX70	363	Palo Pinto	<i>ra evine</i>				<i>ana ha</i>
Loop	426876	TX85	165	Gaines	Herbert	317697	WV	099	Wayne
Markham	447998	TX30	321	Matagorda	<i>unt</i>				<i>ana ha</i>
Moss Bluff	487479	TX30	291	Liberty	Hurricane Creek	340601	WV	079	Putnam
New York City	505145	TX90	077	Clay	<i>ausooth</i>				<i>arshall</i>
Pecan Station	546832	TX75	451	Tom Green	<i>a e</i>				<i>utnam</i>
Pottsville	568820	TX70	193	Hamilton	<i>anham</i>				<i>ana ha</i>
Rotherwood	614975	TX30	201	Harris	<i>anham</i>				<i>utnam</i>
Rotherwood West	615006	TX30	201	Harris	Little Cacapon	418024	WV	027	Hampshire
Spindletop	669617	TX30	245	Jefferson	Liverpool	420613	WV	035	Jackson
Stratton Ridge	683893	TX30	039	Brazoria	Liverpool	420613	WV	087	Roane
Tri-Cities	716897	TX50	213	Henderson	Liverpool	420613	WV	105	Wirt
Yeast	787149	TX10	021	Bastrop	Logansport	423063	WV	049	Marion
Utah					<i>ost Cree</i>				<i>arrison</i>
Chalk Creek	131078	UT	043	Summit	Lynn Camp	436178	WV	103	Wetzel
Clay Basin	146315	UT	009	Daggett	Majorsville	441705	WV	051	Marshall
Coalville	150268	UT	043	Summit	Mannington	444340	WV	049	Marion
Moab	012012	UT	019	Grand	<i>a le a e</i>				<i>arrison</i>
Virginia					<i>a le a e</i>				<i>aylor</i>
Early Grove	211424	VA	169	Scott	<i>obley</i>				<i>et el</i>
Early Grove	211424	VA	191	Washington	Murphy Creek (Freemansburg)	494610	WV	017	Doddridge
Saltville	015921	VA	173	Smyth	Murphy Creek (Freemansburg)	494610	WV	041	Lewis
Washington					Newberne	505393	WV	021	Gilmer
Jackson Prairie	353192	WA	041	Lewis	<i>ac ett e berne</i>				<i>ilmer</i>
West Virginia					<i>alei h</i>				<i>alei h</i>
Aspinall-Finster	028700	WV	041	Lewis	<i>hodes</i>				<i>e is</i>
Augusta	030591	WV	027	Hampshire	<i>i ley</i>				<i>ac son</i>
Big Run-Birchfield	063361	WV	103	Wetzel	Rockport	608868	WV	035	Jackson
Blue Creek (Falling Rock)	075064	WV	039	Kanawha	Rockport	608868	WV	105	Wirt
<i>rid e ort</i>				<i>arrison</i>	Rockport	608868	WV	107	Wood
Bridgeport-Pruntytown	091681	WV	033	Harrison	Shirley	652900	WV	095	Tyler
Bridgeport-Pruntytown	091681	WV	091	Taylor	Silver Hill	656279	WV	103	Wetzel
<i>ro ns Cree</i>				<i>ana ha</i>	Sinking Creek	657612	WV	021	Gilmer
<i>ro ns Cree</i>				<i>utnam</i>	<i>S in Cree</i>				<i>e is</i>
Burdett-St Albans	104035	WV	039	Kanawha	Slab Fork	659945	WV	081	Raleigh
Burdett-St Albans	104035	WV	079	Putnam	Terra Alta	701821	WV	077	Preston
Burning Springs South	105430	WV	105	Wirt	<i>ictory</i>				<i>arshall</i>
Cameron-Kausooth	004358	WV	051	Marshall	<i>ictory</i>				<i>et el</i>
<i>Coco</i>				<i>ana ha</i>	Weston-Jane Lew	760959	WV	033	Harrison
<i>Comet</i>				<i>aylor</i>	Weston-Jane Lew	760959	WV	041	Lewis
Conings	157615	WV	017	Doddridge	Wilbur	767795	WV	017	Doddridge
Conings	157615	WV	021	Gilmer	Wilbur	767795	WV	095	Tyler
Craddock	167954	WV	083	Randolph	Wyoming				<i>utnam</i>
Craddock	167954	WV	097	Upshur	Billy Creek	064880	WY	019	Johnson
<i>Derric s Cree</i>				<i>ana ha</i>	Brady	087651	WY	037	Sweetwater
Elk-Poca (Sissonville)	219529	WV	035	Jackson	Bunker Hill	103353	WY	007	Carbon
Elk-Poca (Sissonville)	219529	WV	039	Kanawha	Chimney Butte	139262	WY	023	Lincoln
Elk-Poca (Sissonville)	219529	WV	079	Putnam	Chimney Butte	139262	WY	035	Sublette
Fink Creek (Dry Fork)	241304	WV	041	Lewis	Elk Basin	218981	WY	029	Park
<i>in ennedy</i>				<i>Doddrid e</i>	Kirk	381509	WY	013	Fremont
<i>in ennedy</i>				<i>arrison</i>	<i>ir anch</i>				<i>remont</i>
<i>in ennedy</i>				<i>e is</i>	Leroy	411227	WY	041	Uinta
Five Mile-Carpenter	243102	WV	039	Kanawha	Oil Springs	520968	WY	007	Carbon
Gauley Mountain	267851	WV	019	Fayette					

Note: Alias field names are in italics.

Table 6. Fields Located in Multiple Jurisdictions

Field Code	Field Name	State Sub	County Code	Field Code	Field Name	State Sub	County Code
ALABAMA & FLORIDA				COLORADO & NEBRASKA			
235596	FANNY CHURCH	AL	053	546553	PEBBLE	CO	075
355672	JAY	FL	033	546553	PEBBLE	NE	033
418505	LITTLE ESCAMBIA CREEK	AL	053	COLORADO & NEW MEXICO 50			
355672	JAY	FL	033	039319	BARKER DOME	CO	067
418505	LITTLE ESCAMBIA CREEK	AL	053	039288	BARKER CREEK	NM50	045
355672	JAY	FL	113	343874	IGNACIO-BLANCO	CO	007
ALABAMA & MISSISSIPPI				070724	BLANCO	NM50	045
099311	BUCATUNNA CREEK	AL	023	343874	IGNACIO-BLANCO	CO	067
099311	BUCATUNNA CREEK	MS	023	070724	BLANCO	NM50	045
401314	LANGSDALE	AL	023	COLORADO & UTAH			
401314	LANGSDALE	MS	023	111260	CACHE	CO	083
ALABAMA 05 & OTHER GULF 00				459538	MCELMO MESA	UT	037
010820	NORTH CENTRAL GULF	AL05	990	245474	FLODINE PARK	CO	083
886827	MOBILE BLK 827	OG00	995	349587	ISMAY	UT	037
010821	NORTHWEST GULF	AL05	990	245474	FLODINE PARK	CO	083
886823	MOBILE BLK 823	OG00	995	349618	ISMAY SOUTH	UT	037
010821	NORTHWEST GULF	AL05	990	666641	SOUTH CANYON	CO	045
886868	MOBILE BLK 868	OG00	995	038420	BAR X	UT	019
014292	STATE 109	AL05	990	666641	SOUTH CANYON	CO	045
886821	MOBILE BLK 821	OG00	995	628068	SAN ARROYO	UT	019
ARKANSAS & LOUISIANA 50				666641	SOUTH CANYON	CO	077
024391	ARKANA	AR	073	038420	BAR X	UT	019
024391	ARKANA	LA50	015	666641	SOUTH CANYON	CO	077
311380	HAYNESVILLE	AR	027	677662	STATELINE	UT	019
311380	HAYNESVILLE	LA50	027	COLORADO & WYOMING			
311380	HAYNESVILLE	AR	027	320139	HIAWATHA	CO	081
311380	HAYNESVILLE	LA50	119	320139	HIAWATHA	WY	037
591855	RED ROCK	AR	027	419621	LITTLE SNAKE	CO	081
653551	SHONGALOO NORTH-RED ROCK	LA50	119	419621	LITTLE SNAKE	WY	037
609860	RODESSA	AR	091	569161	POWDER WASH	CO	081
609860	RODESSA	LA50	017	569130	POWDER SPRINGS	WY	037
653520	SHONGALOO NORTH	AR	027	615812	ROUND TABLE	CO	081
653551	SHONGALOO NORTH-RED ROCK	LA50	119	615812	ROUND TABLE	WY	037
671725	SPRINGHILL	AR	027	677662	STATELINE	CO	081
671725	SPRINGHILL	LA50	119	677538	STATE LINE	WY	037
ARKANSAS & TEXAS 60				760277	WEST SIDE CANAL	CO	081
074196	BLOOMBURG	AR	091	034979	BAGGS SOUTH	WY	007
074196	BLOOMBURG	TX60	067	760277	WEST SIDE CANAL	CO	081
609860	RODESSA	AR	091	760277	WEST SIDE CANAL	WY	007
609860	RODESSA	TX60	067	ILLINOIS & INDIANA			
CALIFORNIA 00 & CALIFORNIA 05				011572	ALLENDALE	IL	185
121397	CARPINTERIA OFFSHORE	CA00	995	146749	CLAYPOLE HILLS CONSOL	IN	083
121397	CARPINTERIA OFFSHORE	CA05	990	055122	BEMAN EAST	IL	101
COLORADO & KANSAS				048488	BEAMAN EAST CONSOL	IN	083
012453	ARAPAHOE EAST	CO	017	068523	BLACK RIVER	IL	193
011646	ARAPAHOEKAN	KS	199	068554	BLACK RIVER CONSOL	IN	129
012168	FRONTERA	CO	017	346998	INMAN EAST CONSOL	IL	059
681382	STOCKHOLM	KS	199	346967	INMAN EAST	IN	129
012168	FRONTERA	CO	017	371627	KEENSBURG SOUTH	IL	185
011860	STOCKHOLM SOUTH	KS	199	291313	GRIFFIN CONSOL	IN	051
289918	GREENWOOD	CO	009	405251	LAWRENCE COUNTY DIVISION	IL	101
290011	GREENWOOD GAS AREA	KS	129	673384	ST FRANCISVILLE CONSOL	IN	083
013490	JACE	CO	061	453702	MAUNIE EAST	IL	193
013500	MOORE-JOHNSON	KS	071	453702	MAUNIE EAST	IN	129
681382	STOCKHOLM	CO	017	490332	MT CARMEL	IL	185
681475	STOCKHOLM SW	KS	071	490363	MT CARMEL CONSOL	IN	051
				490332	MT CARMEL	IL	185
				490425	MT CARMEL NORTH	IN	083

Table 6. Fields Located in Multiple Jurisdictions (Continued)

Field Code	Field Name	State Sub	County Code	Field Code	Field Name	State Sub	County Code
503874	NEW HARMONY CONSOL	IL	193	001551	LAWSON NE	KS	039
291313	GRIFFIN CONSOL	IN	051	772166	WILSONVILLE SW	NE	065
503874	NEW HARMONY CONSOL	IL	193	KANSAS & OKLAHOMA			
291313	GRIFFIN CONSOL	IN	129				
503967	NEW HARMONY SOUTH	IL	193	112872	CALDWELL	KS	191
756200	WELBORN NORTH CONSOL	IN	129	112872	CALDWELL	OK	053
504029	NEW HAVEN CONSOL	IL	193	116964	CANEY	KS	125
335051	HOVEY WEST	IN	129	116623	CANARY	OK	147
504029	NEW HAVEN CONSOL	IL	193	145447	CLARK CREEK	KS	025
756185	WELBORN CONSOL	IN	129	145447	CLARK CREEK	OK	059
516721	OAK GROVE	IL	059	218702	ELGIN	KS	019
516721	OAK GROVE	IN	129	218733	ELGIN SOUTH	OK	113
607411	ROCHESTER	IL	185	219663	ELKHART	KS	129
607411	ROCHESTER	IN	051	122606	CARTHAGE DISTRICT NE	OK	139
673415	ST FRANCISVILLE EAST	IL	101	241118	FINCHAM	KS	119
673384	ST FRANCISVILLE CONSOL	IN	083	480070	MOCANE-LAVERNE GAS AREA	OK	007
677538	STATE LINE	IL	023	290011	GREENWOOD GAS AREA	KS	129
677538	STATE LINE	IN	167	122668	CARTHAGE GAS AREA	OK	139
ILLINOIS & KENTUCKY				337780	HUGOTON GAS AREA	KS	175
649056	SHAWNEETOWN EAST	IL	059	295545	GUYMON-HUGOTON GAS AREA	OK	139
649056	SHAWNEETOWN EAST	KY	225	337780	HUGOTON GAS AREA	KS	189
INDIANA & KENTUCKY				295545	GUYMON-HUGOTON GAS AREA	OK	139
039257	BARKER	IN	163	413049	LIBERAL-LIGHT	KS	175
039257	BARKER	KY	101	480070	MOCANE-LAVERNE GAS AREA	OK	007
393595	LACONIA	IN	061	461150	MCKAY	KS	035
194968	DOE RUN	KY	163	139014	CHILOCCO EAST	OK	071
569502	POWELLS LAKE CONSOL	IN	129	461491	MCKINNEY	KS	025
569471	POWELLS LAKE	KY	225	480070	MOCANE-LAVERNE GAS AREA	OK	007
662394	SMITH MILLS NORTH	IN	129	461491	MCKINNEY	KS	119
662332	SMITH MILLS CONSOL	KY	101	480070	MOCANE-LAVERNE GAS AREA	OK	007
INDIANA & MICHIGAN				494579	MURPHY	KS	191
219694	ELKHART NORTH	IN	039	192479	DILWORTH DISTRICT	OK	071
215485	EDWARDSBURG	MI	027	551823	PERU-SEDAN	KS	019
INDIANA & OHIO				196518	DOMES-POND CREEK	OK	113
716680	TRENTON	IN	001	551823	PERU-SEDAN	KS	019
005094	CHATTANOOGA	OH	107	721307	TURKEY CREEK	OK	113
716680	TRENTON	IN	001	696659	TALOGA	KS	129
005777	WILLSHIRE	OH	161	244482	FLATS NW	OK	139
716680	TRENTON	IN	075	723065	TUTTLE SE	KS	033
005094	CHATTANOOGA	OH	107	429790	LOVEDALE NW	OK	059
KANSAS & MISSOURI				724826	TYRO	KS	125
178946	DALLAS	KS	091	116623	CANARY	OK	147
411537	LESTER	MO	095	776608	WOLGAMOTT	KS	007
265805	GARLAND	KS	011	776608	WOLGAMOTT	OK	151
002598	SWARTZ-GARLAND	MO	217	786333	YELLOWSTONE NORTH	KS	033
429108	LOUISBURG	KS	121	786302	YELLOWSTONE	OK	151
002651	FREEMAN-WESTLINE	MO	037	KENTUCKY & TENNESSEE			
429108	LOUISBURG	KS	121	004672	BEATY	KY	053
002602	LIMPUS	MO	037	677755	STATIC	TN	137
429108	LOUISBURG	KS	121	KENTUCKY & VIRGINIA			
002603	LISLE	MO	037	011711	ELKHORN CITY BS EAST	KY	195
681041	STILLWELL	KS	091	012915	BREAKS-HAYSI	VA	027
747512	WALTON	MO	037	005786	WOODMAN EAST	KY	195
KANSAS & NEBRASKA				008403	HURLEY	VA	027
071468	BLEES	KS	039	KENTUCKY & WEST VIRGINIA			
657643	SINK	NE	145	076961	BOARD TREE	KY	195
332467	HORINEK	KS	153	271983	GILBERT	WV	059
332467	HORINEK	NE	087	010687	BUSKIRK NORTH	KY	195
337377	HUFFSTUTTER	KS	147	440775	MAGNOLIA	WV	059
012564	ALMA SOUTH	NE	083	014094	FALLSBURG CONSOL	KY	127
				429046	LOUISA	WV	099

Table 6. Fields Located in Multiple Jurisdictions (Continued)

Field Code	Field Name	State Sub	County Code	Field Code	Field Name	State Sub	County Code
429046	LOUISA	KY	127	935033	WEST CAMERON BLK 33	LA00	995
429046	LOUISA	WV	099	935033	WEST CAMERON BLK 33	LA05	990
005786	WOODMAN EAST	KY	195	935045	WEST CAMERON BLK 45	LA00	995
271983	GILBERT	WV	059	935045	WEST CAMERON BLK 45	LA05	990
010881	ZELDA	KY	127	935049	WEST CAMERON BLK 49	LA00	995
250140	FORT GAY-HUBBARDSTOWN	WV	099	935049	WEST CAMERON BLK 49	LA05	990
LOUISIANA 00 & LOUISIANA 05				942027	WEST DELTA BLK 27	LA00	995
803002	BAY MARCHAND BLK 2	LA00	995	942027	WEST DELTA BLK 27	LA05	990
803002	BAY MARCHAND BLK 2	LA05	990	942035	WEST DELTA BLK 35	LA00	995
810053	BRETON SOUND BLK 53	LA00	995	942018	WEST DELTA BLK 18	LA05	990
810053	BRETON SOUND BLK 53	LA05	990	LOUISIANA 00 & OTHER GULF 00			
159661	COON POINT	LA00	995	933022	VIOSCA KNOLL BLK 22	LA00	995
159661	COON POINT	LA05	990	886990	MOBILE BLK 990	OG00	995
842016	GRAND ISLE BLK 16	LA00	995	LOUISIANA 00 & TEXAS 00			
842016	GRAND ISLE BLK 16	LA05	990	840065	GARDEN BANKS BLK 65	LA00	995
842018	GRAND ISLE BLK 18	LA00	995	840065	GARDEN BANKS BLK 65	TX00	995
842018	GRAND ISLE BLK 18	LA05	990	850244	HIGH ISLAND EA BLK A244	LA00	995
842025	GRAND ISLE BLK 25	LA00	995	850244	HIGH ISLAND EA BLK A244	TX00	995
842025	GRAND ISLE BLK 25	LA05	990	852330	HIGH ISLAND EA SX BLK A330	LA00	995
413824	LIGHTHOUSE POINT	LA00	995	852330	HIGH ISLAND EA SX BLK A330	TX00	995
413824	LIGHTHOUSE POINT	LA05	990	852370	HIGH ISLAND EA SX BLK A370	LA00	995
866151	MAIN PASS BLK 151	LA00	995	852370	HIGH ISLAND EA SX BLK A370	TX00	995
866074	MAIN PASS BLK 74	LA05	990	890010	SABINE PASS BLK 10	LA00	995
866006	MAIN PASS BLK 6	LA00	995	890010	SABINE PASS BLK 10	TX00	995
866006	MAIN PASS BLK 6	LA05	990	890017	SABINE PASS BLK 17	LA00	995
866069	MAIN PASS BLK 69	LA00	995	890017	SABINE PASS BLK 17	TX00	995
866069	MAIN PASS BLK 69	LA05	990	937663	WEST CAMERON SA BLK 663	LA00	995
866073	MAIN PASS BLK 73	LA00	995	937663	WEST CAMERON SA BLK 663	TX00	995
866074	MAIN PASS BLK 74	LA05	990	LOUISIANA 10 & TEXAS 30			
894015	SHIP SHOAL BLK 15	LA00	995	011789	ALLIGATOR LAKE	LA10	011
894015	SHIP SHOAL BLK 15	LA05	990	011789	ALLIGATOR LAKE	TX30	351
894069	SHIP SHOAL BLK 69	LA00	995	469094	MERRYVILLE	LA10	011
894066	SHIP SHOAL BLK 66	LA05	990	469094	MERRYVILLE	TX30	351
894072	SHIP SHOAL BLK 72	LA00	995	554404	PHOENIX LAKE	LA10	019
894072	SHIP SHOAL BLK 72	LA05	990	554404	PHOENIX LAKE	TX30	361
909001	SOUTH PASS BLK 1	LA00	995	622922	SABINE LAKE NORTH	LA10	023
909001	SOUTH PASS BLK 1	LA05	990	622922	SABINE LAKE NORTH	TX30	361
909020	SOUTH PASS BLK 20	LA00	995	659728	SKINNER LAKES	LA10	011
909020	SOUTH PASS BLK 20	LA05	990	659728	SKINNER LAKES	TX30	351
909021	SOUTH PASS BLK 21	LA00	995	LOUISIANA 50 & MISSISSIPPI			
909021	SOUTH PASS BLK 21	LA05	990	066415	BISLAND BAYOU	LA50	029
909026	SOUTH PASS BLK 26	LA00	995	066415	BISLAND BAYOU	MS	001
909026	SOUTH PASS BLK 26	LA05	990	228196	ESPERANCE POINT	LA50	029
909027	SOUTH PASS BLK 27	LA00	995	228196	ESPERANCE POINT	MS	001
909027	SOUTH PASS BLK 27	LA05	990	272479	GILES BEND	LA50	029
909030	SOUTH PASS BLK 30	LA00	995	272479	GILES BEND	MS	001
909030	SOUTH PASS BLK 30	LA05	990	499169	NATCHEZ FERRY	LA50	029
909042	SOUTH PASS BLK 42	LA00	995	499169	NATCHEZ FERRY	MS	001
909042	SOUTH PASS BLK 42	LA05	990	610201	RODNEY ISLAND	LA50	107
909061	SOUTH PASS BLK 61	LA00	995	610201	RODNEY ISLAND	MS	063
909006	SOUTH PASS BLK 6	LA05	990	LOUISIANA 50 & TEXAS 60			
913078	SOUTH PASS SA BLK 78	LA00	995	053572	BELLE BOWER	LA50	031
913078	SOUTH PASS SA BLK 78	LA05	990	053572	BELLE BOWER	TX60	365
929014	VERMILION BLK 14	LA00	995	058935	BETHANY-LONGSTREET	LA50	017
929014	VERMILION BLK 14	LA05	990	058904	BETHANY	TX60	365
929014	VERMILION BLK 14	LA00	995	111694	CADDO PINE ISLAND	LA50	017
929028	VERMILION BLK 28	LA05	990	447812	MARION COUNTY	TX60	315
935017	WEST CAMERON BLK 17	LA00	995	290197	GREENWOOD-WASKOM	LA50	017
935017	WEST CAMERON BLK 17	LA05	990	750612	WASKOM	TX60	365
935028	WEST CAMERON BLK 28	LA00	995	423063	LOGANSPOINT	LA50	031
935028	WEST CAMERON BLK 28	LA05	990	423063	LOGANSPOINT	TX60	365

Table 6. Fields Located in Multiple Jurisdictions (Continued)

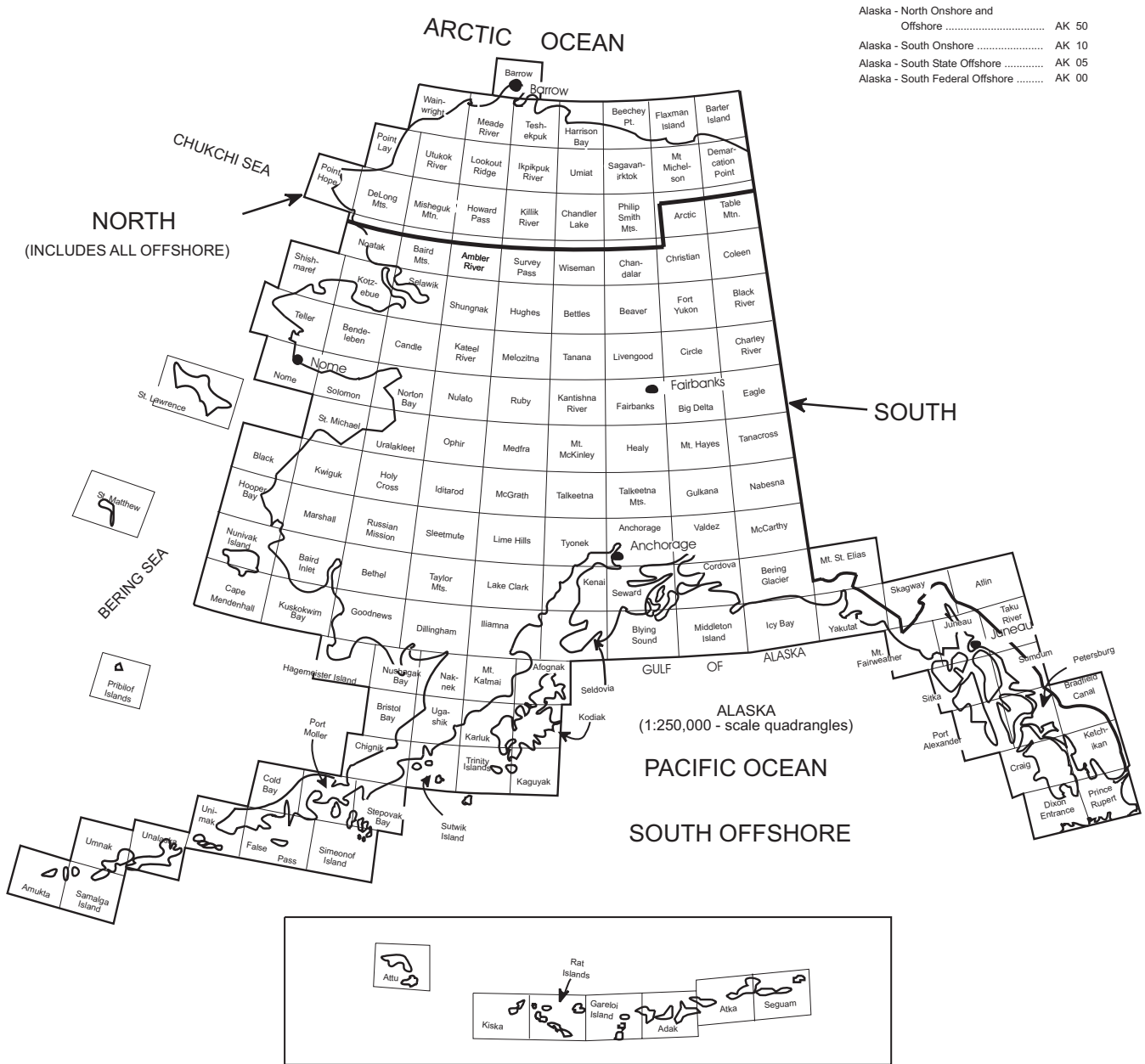
Field Code	Field Name	State Sub	County Code	Field Code	Field Name	State Sub	County Code
426504	LONGWOOD	LA50	017	325720	HOBBS EAST	NM10	025
426504	LONGWOOD	TX60	203	325720	HOBBS EAST	TX85	165
609860	RODESSA	LA50	017	420117	LITTMAN	NM10	025
609860	RODESSA	TX60	067	420117	LITTMAN	TX85	165
609860	RODESSA	LA50	017	NY & PENNSYLVANIA			
609860	RODESSA	TX60	315	086938	BRADFORD	NY	009
MARYLAND & PENNSYLVANIA				086938	BRADFORD	PA	083
501504	NEGRO MOUNTAIN	MD	023	094130	BROOKFIELD	NY	101
501504	NEGRO MOUNTAIN	PA	111	094130	BROOKFIELD	PA	117
MARYLAND & WEST VIRGINIA				107176	BUSTI	NY	013
489401	MOUNTAIN LAKE PARK	MD	023	686683	SUGAR GROVE	PA	123
489401	MOUNTAIN LAKE PARK	WV	077	307722	HARRISON EAST	NY	101
MONTANA & NORTH DAKOTA				307691	HARRISON	PA	105
127745	CEDAR CREEK	MT	025	442573	MALLORY	NY	009
127745	CEDAR CREEK	ND	011	759626	WEST BRANCH	PA	083
208741	DWYER	MT	091	599404	RICHBURG	NY	003
290538	GRENORA	ND	105	652414	SHINGLEHOUSE	PA	083
243924	FLAT LAKE EAST	MT	091	599404	RICHBURG	NY	003
243924	FLAT LAKE EAST	ND	023	652414	SHINGLEHOUSE	PA	105
280726	GOOSE LAKE EAST	MT	091	647971	SHARON	NY	003
280726	GOOSE LAKE EAST	ND	023	652414	SHINGLEHOUSE	PA	105
481643	MONDAK WEST	MT	083	675523	STAGECOACH	NY	107
481635	MONDAK	ND	053	675523	STAGECOACH	PA	015
MONTANA & WYOMING				677538	STATE LINE	NY	003
027150	ASH CREEK	MT	003	677538	STATE LINE	PA	105
027150	ASH CREEK	WY	033	OHIO & PENNSYLVANIA			
218981	ELK BASIN	MT	009	015217	BUSHNELL-CONNEAUT	OH	007
218981	ELK BASIN	WY	029	157832	CONNEAUT	PA	039
255550	FRANNIE	MT	009	OHIO & WEST VIRGINIA			
255550	FRANNIE	WY	029	005001	ATHALIA	OH	087
NORTH DAKOTA & SOUTH DAKOTA				340105	HUNTINGTON	WV	011
333079	HORSE CREEK SOUTH	ND	011	005001	ATHALIA	OH	087
465196	MEDICINE POLE HILLS SOUTH	SD	063	340105	HUNTINGTON	WV	099
677538	STATE LINE	ND	011	039505	BARLOW	OH	167
677538	STATE LINE	SD	063	540174	PARKERSBURG	WV	107
NEW MEXICO 10 & TEXAS 80				054409	BELLS RUN	OH	167
043752	BATTLEAXE	NM10	025	674345	ST MARYS	WV	073
043752	BATTLEAXE	TX80	301	082830	BOSWORTH	OH	167
195898	DOLLARHIDE	NM10	025	674345	ST MARYS	WV	073
195898	DOLLARHIDE	TX80	003	005056	BRILLIANT	OH	081
216935	EL MAR	NM10	025	686435	SUCKERROD	WV	009
216935	EL MAR	TX80	301	104872	BURLINGTON	OH	013
353905	JALMAT	NM10	025	276711	GLENN RUN	WV	069
636880	SCARBOROUGH	TX80	495	005096	CHESIRE	OH	053
420117	LITTMAN	NM10	025	562837	POINT PLEASANT	WV	053
420117	LITTMAN	TX80	003	284927	GRANDVIEW	OH	167
451470	MASON NORTH	NM10	015	056331	BENS RUN	WV	073
451470	MASON NORTH	TX80	301	284927	GRANDVIEW	OH	167
451470	MASON NORTH	NM10	025	056331	BENS RUN	WV	095
451470	MASON NORTH	TX80	301	292584	GROUNDHOG CREEK	OH	105
590026	RED BLUFF	NM10	015	292584	GROUNDHOG CREEK	WV	035
590026	RED BLUFF	TX80	301	292584	GROUNDHOG CREEK	OH	105
636880	SCARBOROUGH	NM10	025	602752	RIPLEY NORTH	WV	035
636880	SCARBOROUGH	TX80	495	315775	HENDERSHOT	OH	167
677662	STATELINE	NM10	025	077064	BOAZ	WV	107
677662	STATELINE	TX80	003	407104	LEBANON	OH	105
NEW MEXICO 10 & TEXAS 85				502510	NEPTUNE	WV	035
093727	BRONCO	NM10	025	420644	LIVERPOOL EAST	OH	029
093727	BRONCO	TX85	501	136565	CHESTER-PUGHTOWN	WV	029
				430875	LOWER NEWPORT	OH	167
				077064	BOAZ	WV	107

Table 6. Fields Located in Multiple Jurisdictions (Continued)

Field Code	Field Name	State Sub	County Code	Field Code	Field Name	State Sub	County Code
005882	MILE RUN	OH	167	121862	CARSON	PA	007
077064	BOAZ	WV	107	267324	GAS VALLEY	WV	029
005906	MOORES JUNCTION	OH	167	241424	FINLEY WEST	PA	059
077064	BOAZ	WV	107	441705	MAJORSVILLE	WV	051
005945	NEWELL RUN	OH	167	241424	FINLEY WEST	PA	125
674345	ST MARYS	WV	073	441705	MAJORSVILLE	WV	051
005968	OLIVE-MEIGS	OH	105	266518	GARRISON	PA	059
503688	NEW ENGLAND	WV	107	325192	HIXENBAUGH (CAPPO RUN)	WV	103
005980	PATTON RUN	OH	013	007381	HOOVERS RUN	PA	059
276711	GLENN RUN	WV	069	089511	BRAVE	WV	061
006036	PROCTORVILLE	OH	087	007381	HOOVERS RUN	PA	059
340105	HUNTINGTON	WV	011	445595	MAPLE-WADESTOWN	WV	061
006036	PROCTORVILLE	OH	087	374107	KENDALL	PA	007
340105	HUNTINGTON	WV	099	721803	TURKEYFOOT	WV	029
575633	PUTNAM	OH	009	458484	MCCRACKEN	PA	059
503688	NEW ENGLAND	WV	107	004358	CAMERON-KAUSOOTH	WV	051
006417	SHEETS RUN	OH	167	458484	MCCRACKEN	PA	059
056331	BENS RUN	WV	073	608868	ROCKPORT	WV	051
006417	SHEETS RUN	OH	167	489029	MOUNT MORRIS	PA	059
056331	BENS RUN	WV	095	124404	CASSVILLE-BOWLBY	WV	061
658139	SISTERSVILLE	OH	111	489029	MOUNT MORRIS	PA	059
658139	SISTERSVILLE	WV	095	234157	FAIRVIEW-STATLER RUN-MT MO	WV	061
691364	SUTTON	OH	105	503770	NEW FREEPORT	PA	059
503998	NEW HAVEN	WV	053	054502	BELLTON	WV	051
	OKLAHOMA & TEXAS 90			503770	NEW FREEPORT	PA	059
302824	HANDY SE	OK	095	004358	CAMERON-KAUSOOTH	WV	051
302824	HANDY SE	TX90	181	503770	NEW FREEPORT	PA	059
641879	SEAY	OK	067	607597	ROCK CAMP	WV	103
482395	MONTAGUE COUNTY REGULAR	TX90	337	007450	POINT MARION	PA	059
658325	SIVELLS BEND	OK	085	124404	CASSVILLE-BOWLBY	WV	061
658325	SIVELLS BEND	TX90	097	598846	RICH HILL	PA	059
	OKLAHOMA & TEXAS 95			441705	MAJORSVILLE	WV	051
036467	BALKO SOUTH	OK	007	007331	SHANNON RUN	PA	059
011479	ALLEN-PARKER	TX95	357	484038	MOORESVILLE	WV	061
116065	CAMRICK DISTRICT	OK	007	662890	SMITHS FERRY	PA	007
551389	PERRYTON NORTH	TX95	357	662890	SMITHS FERRY	WV	029
291499	GRIGGS SOUTH	OK	025	721514	TURKEY FOOT	PA	125
365433	JUDD	TX95	421	721803	TURKEYFOOT	WV	029
295669	GUYMON SOUTH	OK	139	765353	WHITELY CREEK	PA	059
324944	HITCHLAND WEST	TX95	195	124404	CASSVILLE-BOWLBY	WV	061
295545	GUYMON-HUGOTON GAS AREA	OK	139		TEXAS 00 & TEXAS 05		
000333	TEXAS HUGOTON	TX95	195	805437	BRAZOS BLK 437	TX00	995
295545	GUYMON-HUGOTON GAS AREA	OK	139	805438	BRAZOS BLK 438	TX05	990
000333	TEXAS HUGOTON	TX95	421	848022	HIGH ISLAND BLK 22	TX00	995
321565	HIGGINS SOUTH	OK	045	006222	BLOCK 23L	TX05	990
321565	HIGGINS SOUTH	TX95	211	873519	MATAGORDA ISLAND BLK 519	TX00	995
321565	HIGGINS SOUTH	OK	045	873519	MATAGORDA ISLAND BLK 519	TX05	990
321565	HIGGINS SOUTH	TX95	295	873527	MATAGORDA ISLAND BLK 527	TX00	995
350269	IVANHOE	OK	007	126721	CAVALLO	TX05	990
247567	FOLLETT	TX95	295		UTAH & WYOMING		
423001	LOGAN SOUTH	OK	007	002380	ANSCHUTZ RANCH EAST	UT	043
247567	FOLLETT	TX95	295	002380	ANSCHUTZ RANCH EAST	WY	041
455562	MAYFIELD WEST	OK	009		VIRGINIA & WEST VIRGINIA		
475752	MILLS RANCH	TX95	483	008387	BERWIND	VA	185
480070	MOCANE-LAVERNE GAS AREA	OK	007	061408	BIG CREEK	WV	047
247567	FOLLETT	TX95	295	277145	GLICK	VA	027
	PENNSYLVANIA & WEST VIRGINIA			004501	ROCKRIDGE	WV	047
007281	ASHTREE	PA	059	008403	HURLEY	VA	027
445595	MAPLE-WADESTOWN	WV	061	271983	GILBERT	WV	059

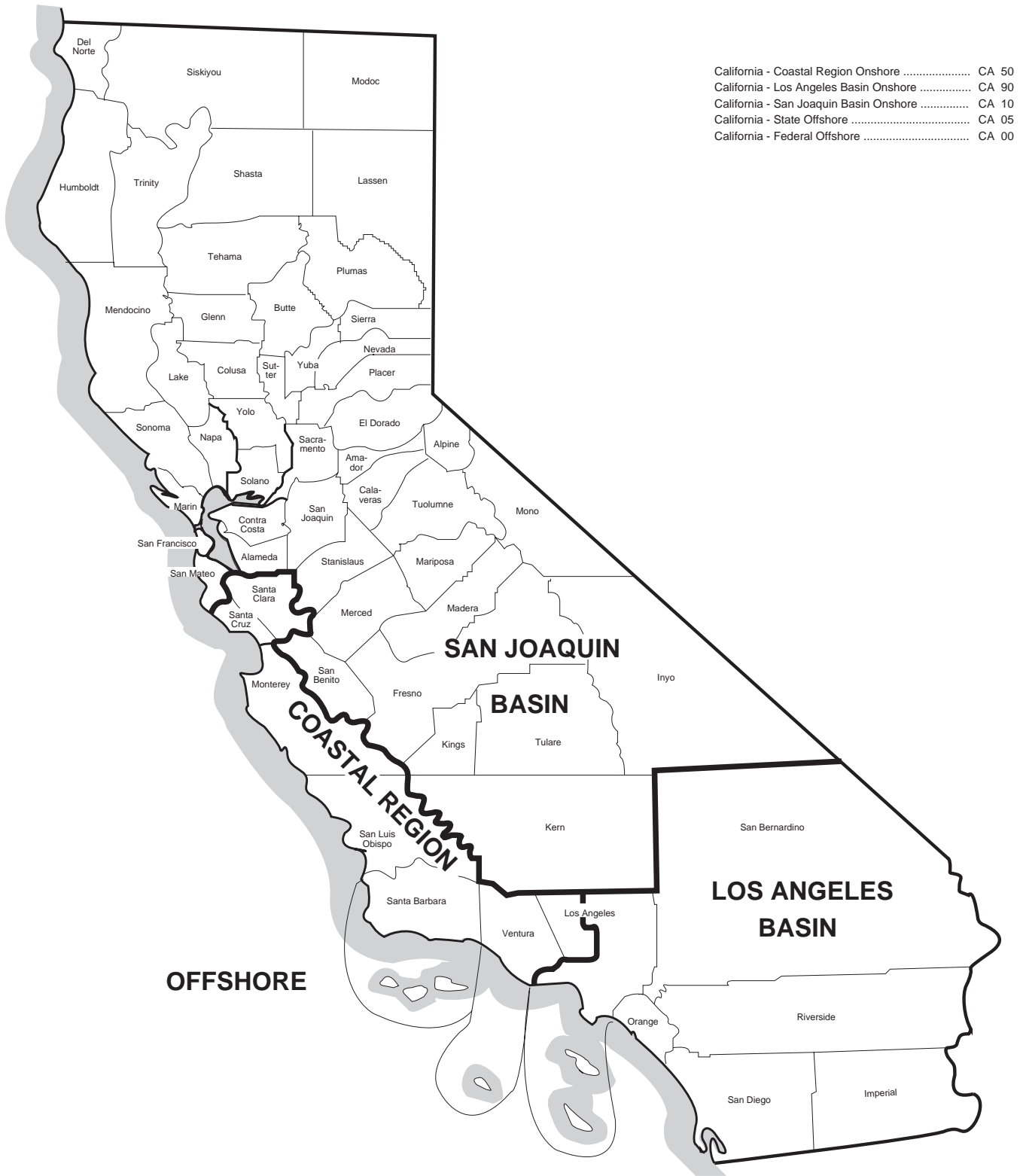
Source: Energy Information Administration, Office of Oil and Gas.

Figure 4. Subdivisions of Alaska and U.S. Geological Survey Quadrangles



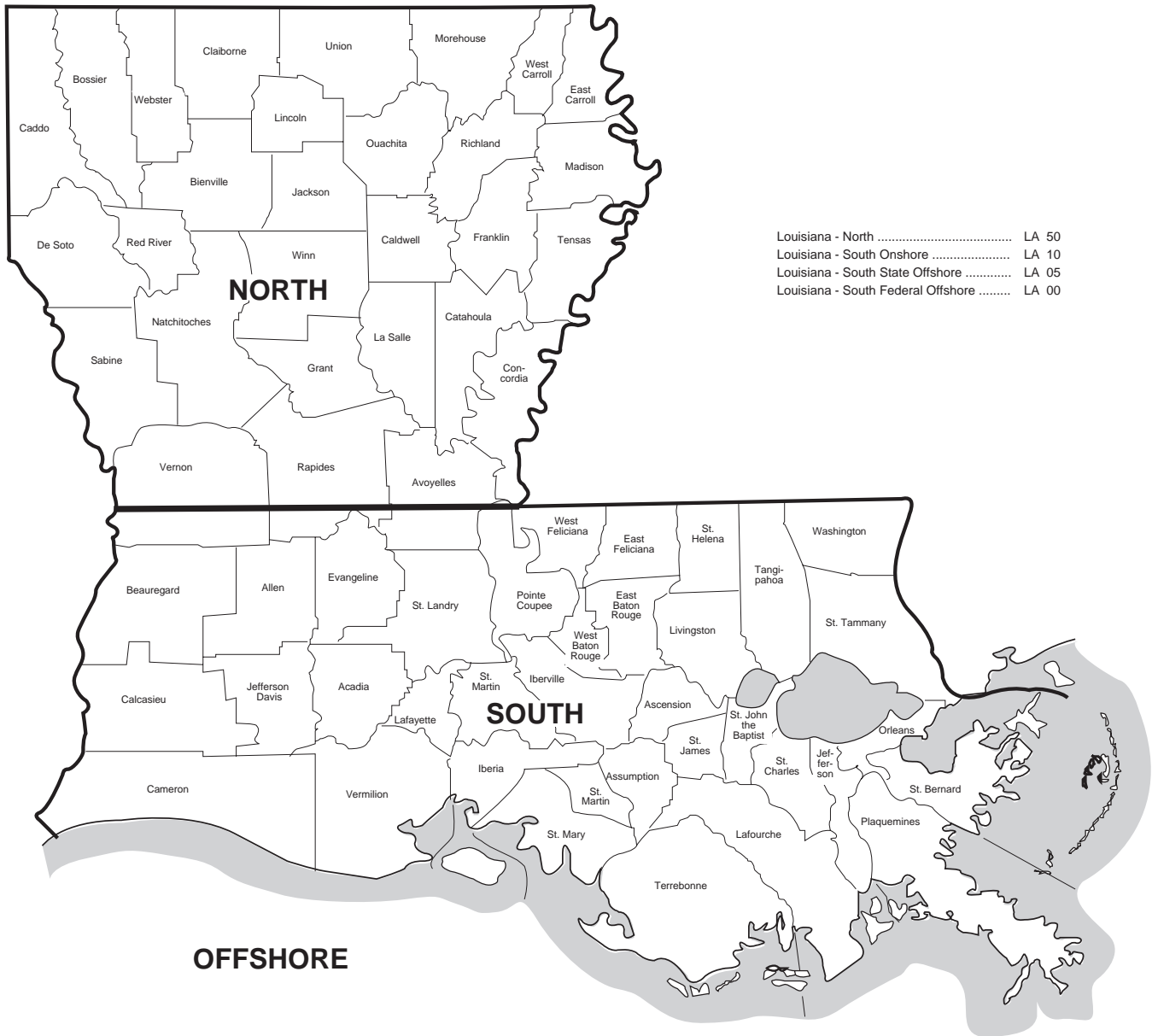
Source: Energy Information Administration, Office of Oil and Gas

Figure 5. Subdivisions of California



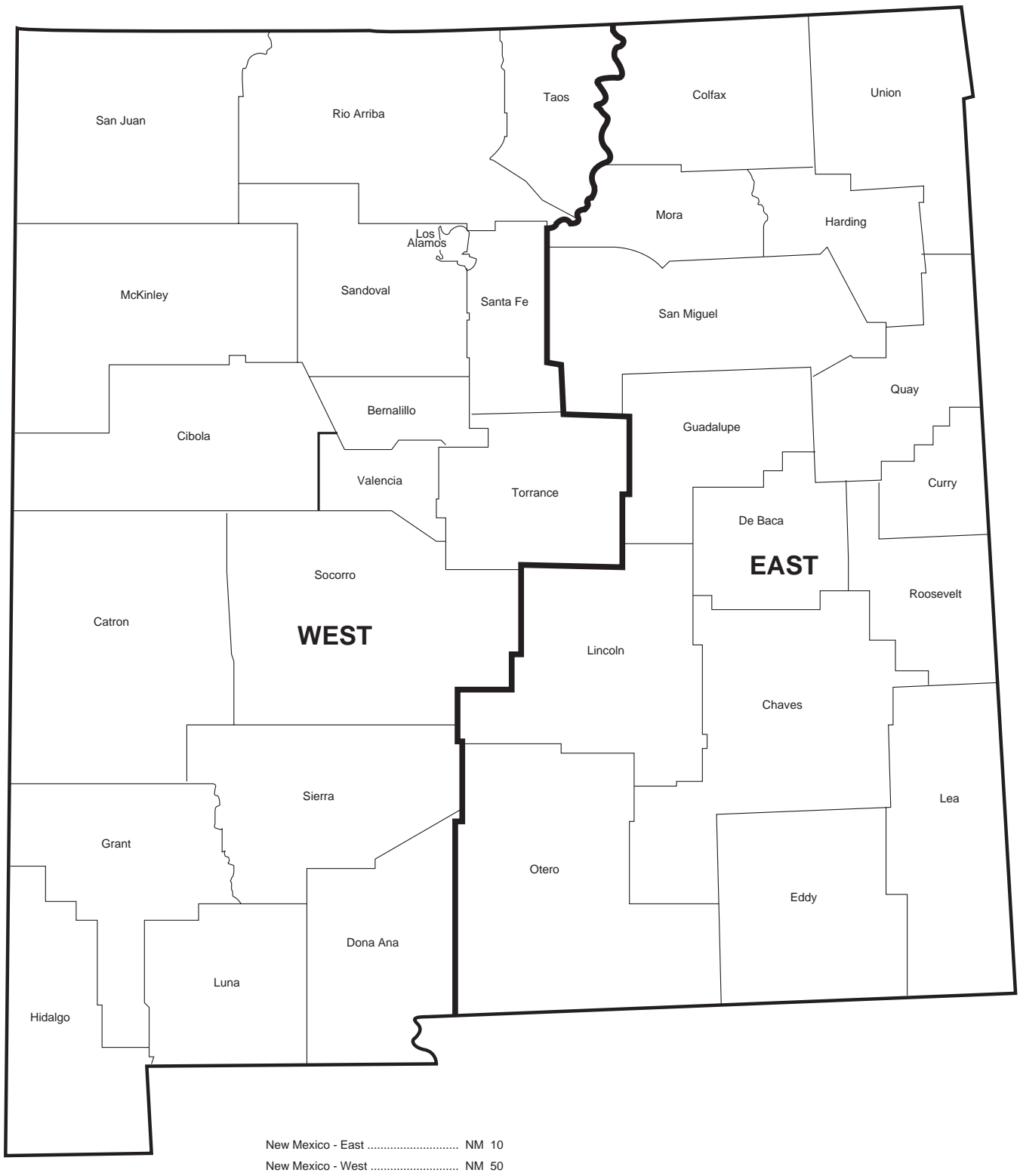
Source: Energy Information Administration, Office of Oil and Gas.

Figure 6. Subdivisions of Louisiana



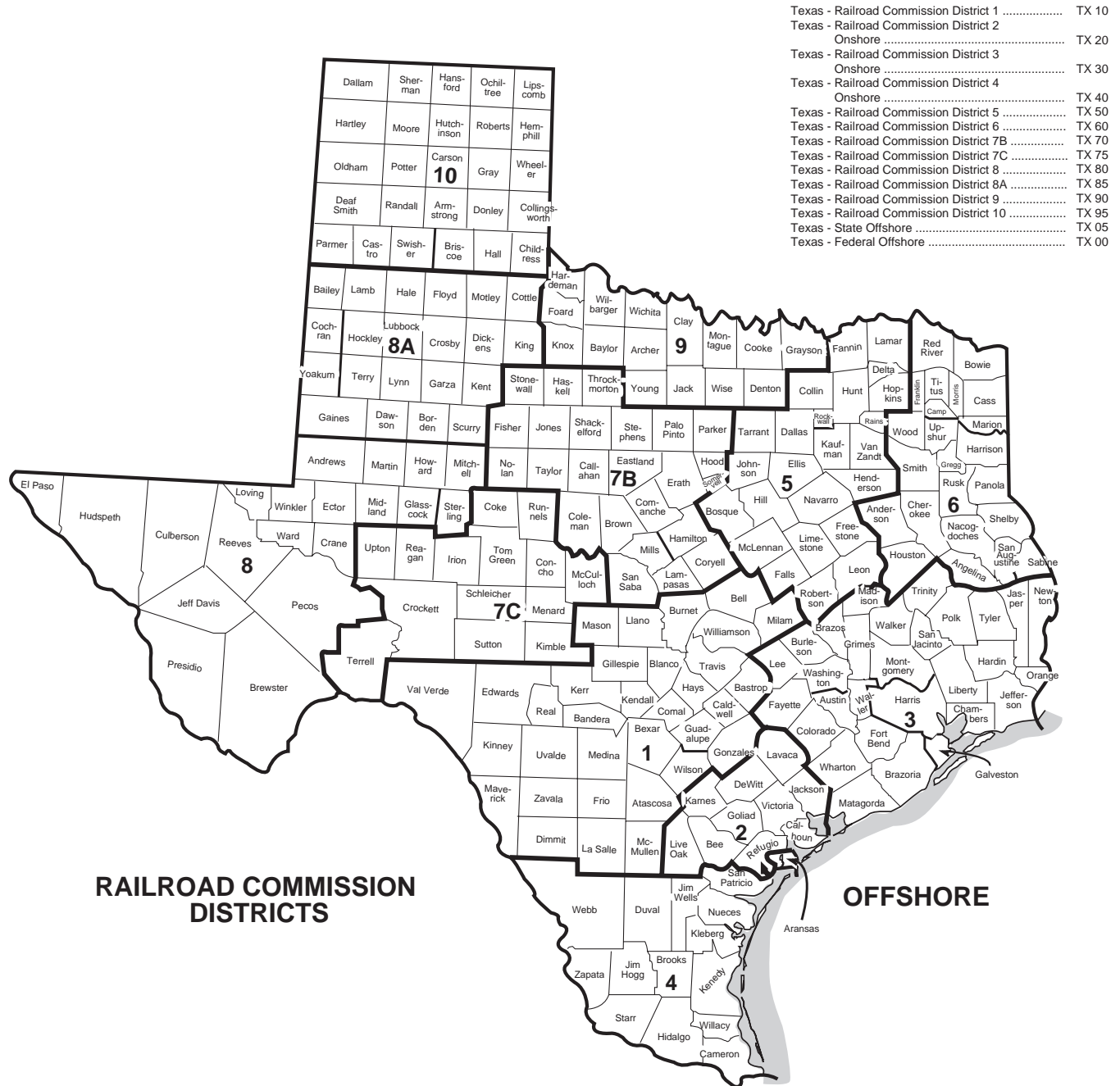
Source: Energy Information Administration, Office of Oil and Gas.

Figure 7. Subdivisions of New Mexico



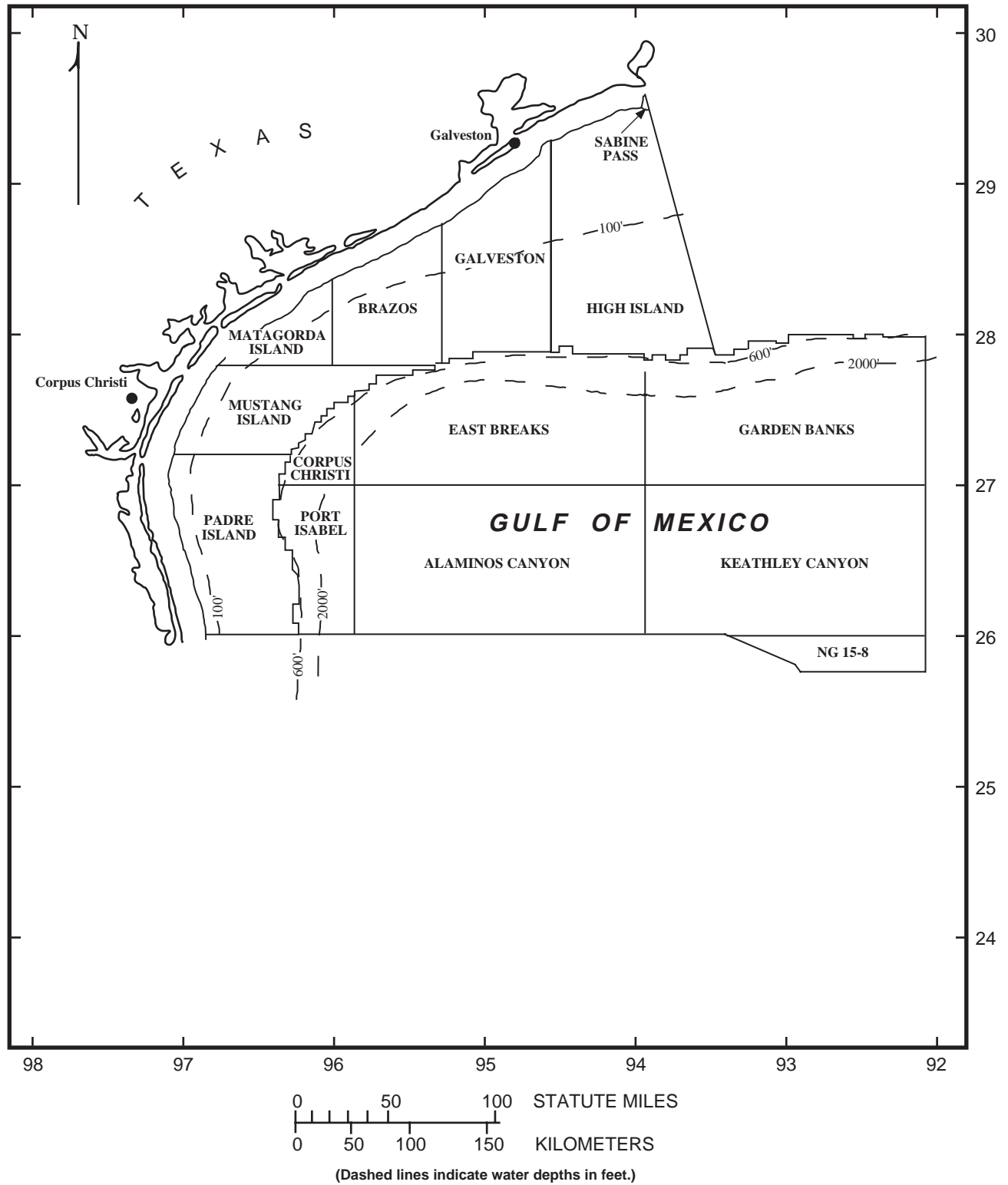
Source: Energy Information Administration, Office of Oil and Gas.

Figure 8. Subdivisions of Texas



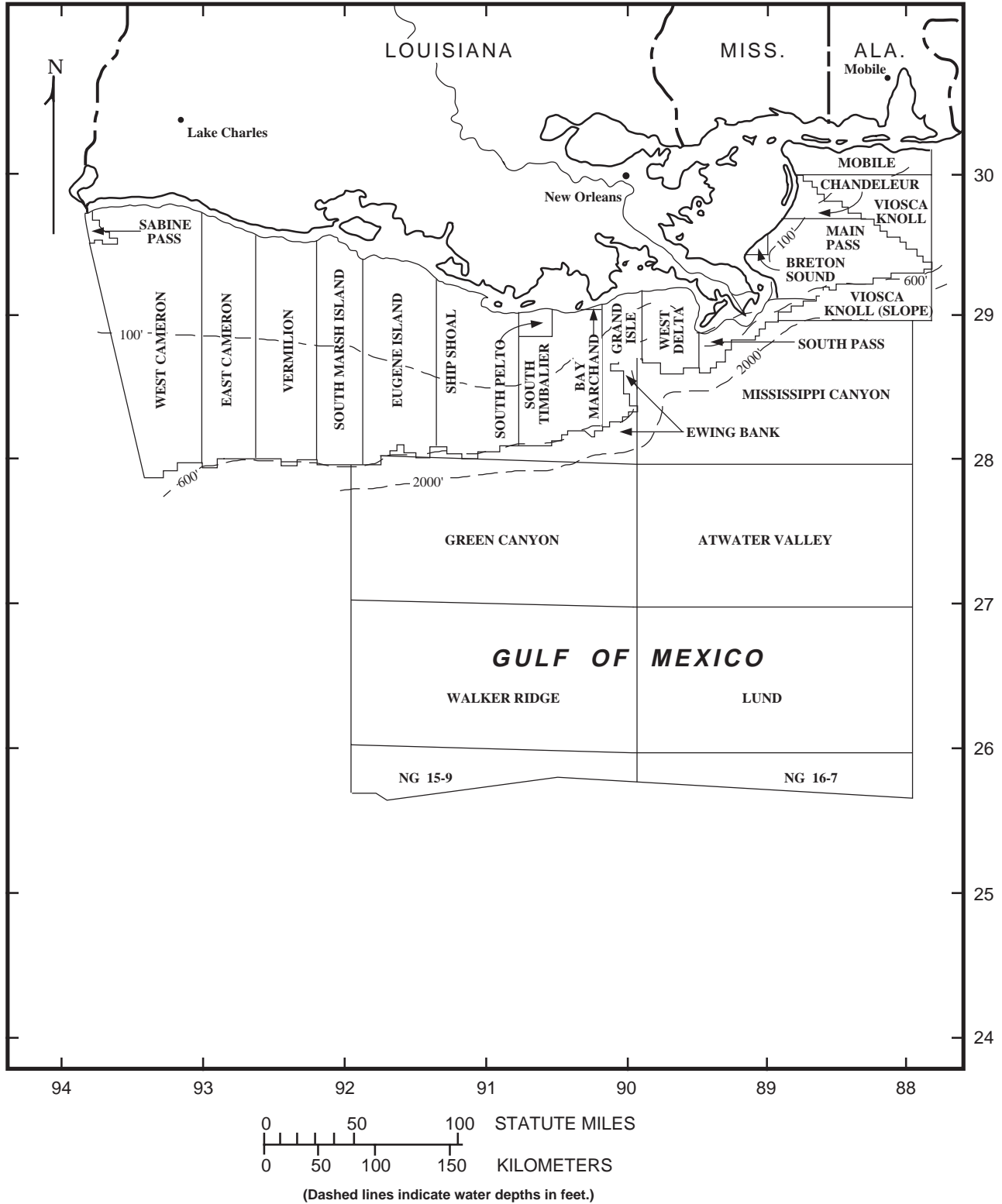
Source: Energy Information Administration, Office of Oil and Gas.

Figure 9. Western Planning Area, Gulf of Mexico Outer Continental Shelf Region



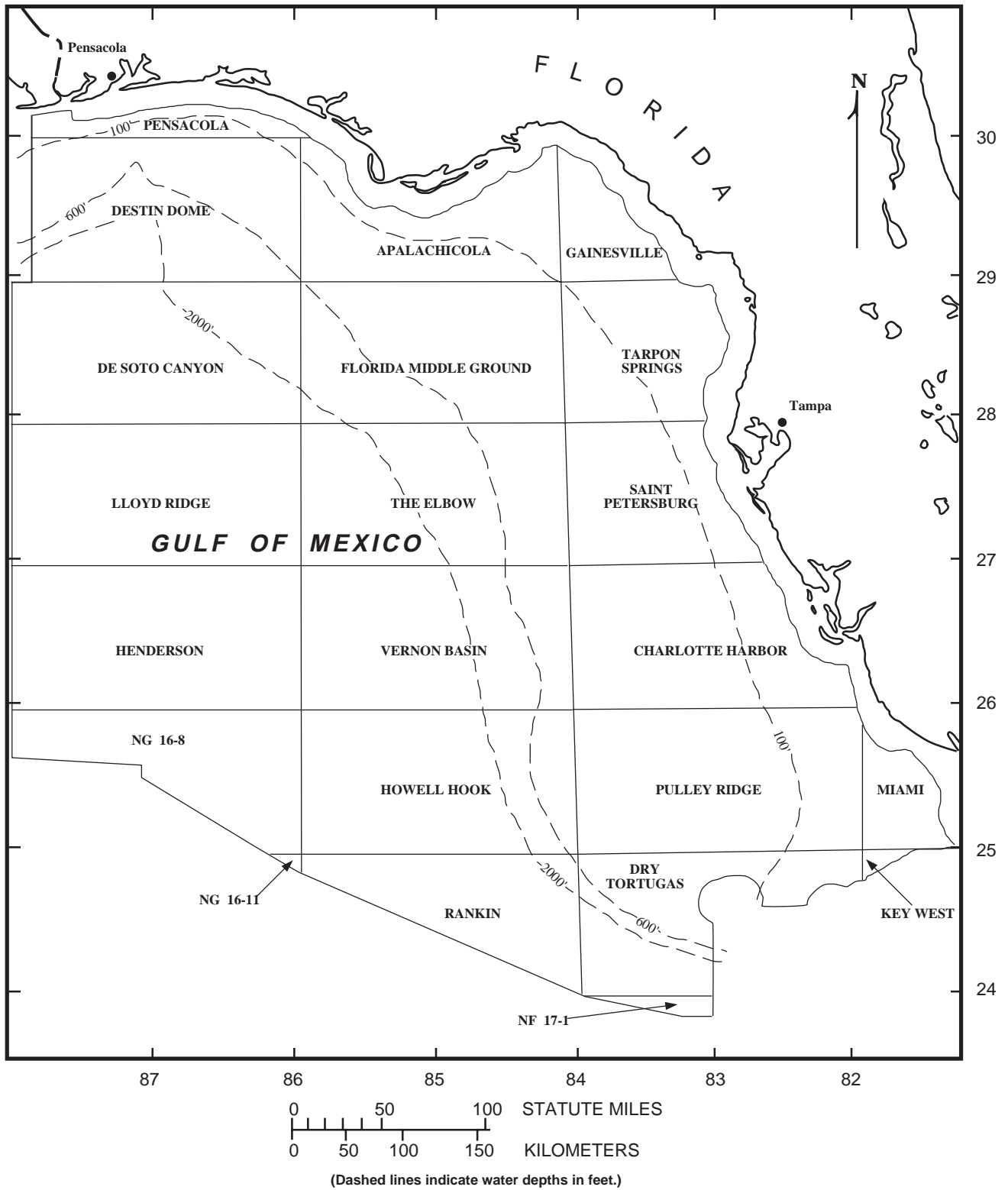
Source: Energy Information Administration, Office of Oil and Gas.

Figure 10. Central Planning Area, Gulf of Mexico Outer Continental Shelf Region



Source: Energy Information Administration, Office of Oil and Gas

Figure 11. Eastern Planning Area, Gulf of Mexico Outer Continental Shelf Region



Source: Energy Information Administration, Office of Oil and Gas

Glossary

This Glossary defines many of the technical terms used in this report.

Crude Oil: A mixture of hydrocarbons that exist in the liquid phase in natural underground reservoirs and remain liquid at atmospheric pressure after passing through surface separating facilities. Crude oil may also include:

- Small amounts of hydrocarbons that exist in the gaseous phase in natural underground reservoirs but are liquid at atmospheric pressure after being recovered from oil well (casinghead) gas in lease separators, and that subsequently are commingled with the crude stream without being separately measured.
- Small amounts of nonhydrocarbons produced with the oil.

Field: An area consisting of a single reservoir or multiple reservoirs all grouped on or related to the same individual geological structural feature and/or stratigraphic condition. There may be two or more reservoirs in a field which are separated vertically by intervening impervious strata, or laterally by local geologic barriers, or by both. (See **Reservoir**)

Field Area: A geographic area encompassing two or more pools that have a common gathering and metering system, the reserves of which are reported as a single unit. This concept applies primarily to the Appalachian region. (See **Pool**)

Field Discovery Year: The calendar year in which a field was first recognized as containing economically recoverable accumulations of oil and/or gas.

Natural Gas: A mixture of hydrocarbon compounds and small quantities of various nonhydrocarbons existing in the gaseous phase or in solution with crude oil in natural underground reservoirs at reservoir conditions. The principal hydrocarbons usually contained in the mixture are methane, ethane, propane, butane, and pentane. Typical nonhydrocarbon gases which may be present in reservoir natural gas are carbon dioxide, helium, hydrogen sulfide, and nitrogen. Under reservoir conditions, natural gas and the liquefiable portions occur either in a single gaseous phase in the reservoir or in solution with crude oil and are not distinguishable at the time as separate substances.

Pool: In general, a reservoir. In certain situations a pool may consist of more than one reservoir. (See **Field Area**)

Reservoir: A porous and permeable underground formation containing an individual and separate natural accumulation of producible hydrocarbons (oil and/or gas) which is confined by impermeable rock or water barriers and is characterized by a single natural pressure system.

Subdivision: A prescribed portion of a given State or other geographical region defined in this publication for statistical reporting purposes.

**Oil and Gas
Field Code Master List Updates**

Field Code	Field Name/ Alias/Remarks	State/ Sub	Co Code	County	Disc Year	Field Type	Field Code	Field Name/ Alias/Remarks	State/ Sub	Co Code	County	Disc Year	Field Type
Alabama							016406	Yampa	CO	081	Moffat	1994	O
007700	Appleton NW	AL	053	Escambia	1997	OA	785990	Yellow Creek	CO	103	Rio Blanco	1994	N
016235	Aston Branch	AL	093	Marion	1997	N	787893	Young STOR(95)	CO	087	Morgan	1957	N
007009	Berry West	AL	057	Fayette	1997	N	Illinois						
016188	Canaan Church West	AL	053	Escambia	1996	OA	028049	Ashmore STOR(61)	IL	029	Coles	1957	N
016273	Copeland Creek South	AL	039	Covington	1997	OA	009683	Belle Gent STOR(72)ABD(91)	IL	199	Williamson		
016317	Kennedy South	AL	075	Lamar	1997	N	009702	C & H STOR(60)ABD(84)	IL	199	Williamson		
460979	McIntosh STOR(94)SALT	AL	129	Washington			130225	Centralia STOR(64)	IL	121	Marion	1937	O
016337	Millport West	AL	075	Lamar	1997	N	213408	Eden STOR(70)	IL	157	Randolph	1962	N
016339	Mississippi Sound East	AL05	990	Offshore-State	1997	N	218299	Elbridge STOR(67)ABD(87)AQF	IL	045	Edgar	1949	O
482209	Monroeville West	AL	099	Monroe	1995	O	323394	Hillsboro STOR(73)AQF	IL	135	Montgomery	1962	O
016342	Mount Joy Church	AL	093	Marion	1997	N	336757	Hudson STOR(70)AQF	IL	113	McLean		
003663	Ollie	AL	099	Monroe	1998	OA	395393	Lake Bloomington STOR(69)AQF	IL	113	McLean		
010826	Ollie South	AL	099	Monroe	1996	OA	414351	Lincoln STOR(73)AQF	IL	107	Logan		
100006	Range West	AL	035	Conecuh	1990	O	009833	Loudon STOR(68)	IL	051	Fayette		
016374	Robbins Branch	AL	035	Conecuh	1997	O	502975	Nevins STOR(67)ABD(87)AQF	IL	045	Edgar		
016189	Teel Creek	AL	039	Covington	1995	OA	546894	Pecatonica STOR(67)AQF	IL	201	Winnebago		
016394	Thornton Springs	AL	023	Choctaw	1997	OA	600179	Richwood STOR(66)ABD(84)	IL	033	Crawford	1959	N
Alaska							639732	Sciota STOR(74)AQF	IL	109	McDonough	1960	O
012998	Alpine	AK50	103	Harrison Bay Quad	1994	O	647599	Shanghai STOR(70)AQF	IL	187	Warren		
016239	Badami	AK50	089	Flaxman Island Quad	1990	O	677538	State Line STOR(67)ABD(87)AQF	IL	023	Clark		
697899	Tarn	AK50	103	Harrison Bay Quad	1991	O	722733	Tuscola STOR(70)ABD(91)AQF	IL	019	Champaign		
016401	West Sak	AK50	103	Harrison Bay Quad	1969	O	Indiana						
Arkansas							016252	Bromer	IN	117	Orange	1997	N
016263	Chicken Creek SW	AR	091	Miller	1997	O	016254	Bryneville	IN	061	Harrison	1997	N
424210	Lone Elm STOR(64)ABD(93)	AR	047	Franklin	1950	N	016258	Campbellsburg	IN	175	Washington	1997	N
California							016259	Central Barren North	IN	061	Harrison	1997	N
010456	Aliso Canyon STOR(72)	CA50	037	Los Angeles	1938	OA	136286	Cherryvale	IN	021	Clay	1997	N
016256	Bullock Bend	CA10	113	Yolo	1997	N	168295	Crandall	IN	061	Harrison	1997	N
330773	Honor Rancho STOR(75)	CA50	037	Los Angeles	1950	OA	016283	Depauw	IN	061	Harrison	1997	N
427868	Los Medanos STOR(77)	CA10	013	Contra Costa	1958	N	016289	Dugger	IN	153	Sullivan	1997	N
459290	McDonald Island STOR(58)	CA10	077	San Joaquin	1936	N	016299	Fredericksburg South	IN	061	Harrison	1997	N
016396	Tracy West	CA10	077	San Joaquin	1997	N	016300	Fredericksburg West	IN	175	Washington	1997	N
Colorado							016301	French Lick	IN	117	Orange	1997	N
016238	Baby Doe	CO	087	Morgan	1997	O	009603	Frenchtown	IN	061	Harrison	1997	N
016242	Bear Gulch SW	CO	001	Adams	1995	O	016302	Frenchtown West	IN	061	Harrison	1997	N
016244	Big Hole North	CO	081	Moffat	1994	N	276432	Glendale STOR(51)ABD(92)	IN	027	Daviess	1929	N
016247	Bird Haven	CO	123	Weld	1997	O	289577	Greenville	IN	043	Floyd	1997	N
016183	Blue Sky	CO	081	Moffat	1996	N	016306	Hardinsburg West	IN	117	Orange	1997	N
094037	Brook	CO	001	Adams	1997	O	335454	Howesville STOR(61)	IN	055	Greene	1952	N
016255	Bull Fork	CO	045	Garfield	1996	N	340074	Huntingburg South STOR(93)	IN	037	Dubois	1953	O
128272	Cedar Valley	CO	123	Weld	1993	O	016320	Koleen	IN	055	Greene	1997	N
131698	Champion	CO	075	Logan	1997	O	405406	Lawrenceburg STOR(56)	IN	029	Dearborn	1885	N
016182	Cocklebur Draw	CO	113	San Miguel	1993	N	416304	Linton STOR(62)ABD(84)AQF	IN	055	Greene	1952	N
016272	Cookie Jar	CO	005	Arapahoe	1994	O	426597	Loogootee STOR(58)ABD(94)	IN	027	Daviess	1899	ON
016275	Council	CO	125	Yuma	1993	N	016327	Loogootee West	IN	027	Daviess	1997	N
005118	Craig Ranch	CO	073	Lincoln	1994	O	016331	Marengo	IN	025	Crawford	1997	N
016277	Craig South	CO	081	Moffat	1986	O	016333	Martinsburg	IN	175	Washington	1997	N
016286	Dike Mountain	CO	055	Huerfano	1994	N	465467	Medora id ay	IN	071	Jackson	1997	N
016295	Farside	CO	017	Cheyenne	1994	O	Alias for: (472760) Midway Consol [RENAM]						
243676	Flank STOR(79)	CO	009	Baca	1961	ON	472760	Midway Consol STOR(66)	IN	147	Spencer	1949	ON
250574	Fort Morgan STOR(66)	CO	087	Morgan	1954	N	476691	Mineral City STOR(72)	IN	055	Greene	1971	O
016298	Fox Field	CO	087	Morgan	1996	O	478945	Mitchell	IN	093	Lawrence	1997	N
259068	Fruita STOR(71)ABD(96)	CO	077	Mesa	1961	N	016340	Moherly West monroe City	IN	061	Harrison	1997	N
009751	Full Moon	CO	017	Cheyenne	1997	O	Alias for: (481930) Monroe City Consol [RENAM]						
016305	Grizzly Creek SE	CO	057	Jackson	1993	O	481930	Monroe City Consol	IN	083	Knox	1922	ON
310884	Hayden	CO	107	Routt	1990	O	016345	New Pekin	IN	175	Washington	1997	N
016307	Hidden Arrow	CO	017	Cheyenne	1994	O	016347	New Salisbury	IN	061	Harrison	1997	N
334741	House Creek STOR(65)ABD(81)	CO	083	Montezuma	1961	N	519883	Odon East STOR(91)ABD(91)AQF	IN	027	Daviess	1952	ON
100007	Javelin	CO	045	Garfield	1995	N	016353	Orleans East	IN	117	Orange	1997	N
016311	Jayhawk Draw	CO	039	Elbert	1997	O	561092	Pleasantville	IN	153	Sullivan	1997	N
016318	Kicking Bird	CO	061	Kiowa	1993	O	617083	Royal Center STOR(62)AQF	IN	017	Cass	1909	O
016323	Ladybug	CO	017	Cheyenne	1994	O	016379	Saltito West	IN	117	Orange	1997	N
403515	Latigo STOR(75)	CO	005	Arapahoe	1971	N	643615	Sellersburg STOR(68)ABD(97)AQF	IN	019	Clark		
016325	Little Ute	CO	083	Montezuma	1994	O	690527	Surprise	IN	071	Jackson	1997	N
425388	Long Canyon	CO	071	Las Animas	1994	N	693201	Switz City STOR(64)	IN	055	Greene	1940	N
016332	Marguerite	CO	017	Cheyenne	1997	O	728448	Unionport STOR(63)ABD(96)AQF	IN	135	Randolph		
484224	Moose	CO	075	Logan	1993	O	016398	Valeene	IN	117	Orange	1997	N
016344	New Day	CO	123	Weld	1997	O	776143	Wolcott STOR(67)AQF	IN	181	White		
016185	Oyster	CO	017	Cheyenne	1996	N	Alias for: (779801) Worthington STOR(61)						
016361	Pawnee Pioneer	CO	123	Weld	1996	O	779801	Worthington STOR(61)	IN	055	Greene	1960	N
545685	Peacock	CO	123	Weld	1998	O	Iowa						
016364	Peetz Table	CO	075	Logan	1996	O	112376	Cairo STOR(62)AQF	IA	115	Louisa		
016365	Ping	CO	121	Washington	1994	O							
016366	Pommel West	CO	123	Weld	1997	N							
016369	Rangely West	CO	103	Rio Blanco	1996	N							
016370	Red Giant	CO	061	Kiowa	1994	O							
016371	Red Willow	CO	125	Yuma	1994	N							
004784	Rhoades	CO	017	Cheyenne	1988	O							
616060	Roundup STOR(78)	CO	087	Morgan	1967	N							
016384	Sleeping Ute	CO	083	Montezuma	1994	O							
662134	Smiley	CO	121	Washington	1980	O							
665246	Sombrero	CO	121	Washington	1993	O							
016386	Spelunker	CO	009	Baca	1997	N							
016387	Spenson	CO	123	Weld	1997	O							
671415	Springdale STOR(63)ABD	CO	075	Logan	1951	N							
016389	Stanley Cup	CO	039	Elbert	1996	O							
016391	Stones Throw	CO	125	Yuma	1994	N							
002448	Stump	CO	087	Morgan	1997	O							
016184	Teardrop	CO	081	Moffat	1996	N							
016393	Terrace South	CO	123	Weld	1997	O							
016395	Timberline	CO	045	Garfield	1996	N							
016403	Wildflower	CO	001	Adams	1997	O							
016405	Windsock	CO	081	Moffat	1997	O							

IOWA

Field Code	Field Name/ Alias/Remarks	State/ Sub	Co Code	County	Disc Year	Field Type	Field Code	Field Name/ Alias/Remarks	State/ Sub	Co Code	County	Disc Year	Field Type
375936	Keota STOR(63)AQF	IA	183	Washington	1963	O	440775	Magnolia STOR(62)	KY	087	Green	1931	N
Kansas													
008441	<i>dol h</i> Alias for: (158638) Converse [COMB] Alden	KS	009	Barton			472280	Midland STOR(69)	KY	177	Muhlenberg	1962	ON
016409	Barber Farms	KS	187	Stanton	1998	N	532074	Owensboro STOR(53)ABD(90)	KY	059	Daviess	1922	N
049821	Beaver Creek NE	KS	153	Rawlins	1998	O	013160	<i>Slaughters East</i> Alias for: (013160) Slaughters East Consol [RENAM]	KY	107	Hopkins		
058284	Berryman	KS	129	Morton	1959	ON	673074	Slaughters East Consol St Charles	KY	107	Hopkins	1963	ON
081683	Borchers North STOR(81)	KS	119	Meade	1959	N	764540	STOR(70) White Plains	KY	107	Hopkins	1962	ON
085806	Boyer STOR(29)ABD(84)	KS	015	Butler	1916	N	Louisiana						
090720	Brehm STOR(83)	KS	151	Pratt	1961	ON	048643	Bear Creek STOR(81)	LA50	013	Bienville	1937	N
090844	Brenham ABD 58_REV 96	KS	097	Kiowa	1998	O	810035	Breton Sound Bk 35	LA05	990	Offshore-State	1997	O
101834	<i>uffalo</i> Alias for: (101834) Buffalo-Vilas [COMB] Buffalo-Vilas	KS	205	Wilson		1905 ON	215648	Egan STOR(95)SALT	LA10	001	Acadia	1943	ONA
106453	Burrton NE	KS	079	Harvey	1942	ON	226762	Epps STOR(79)	LA50	035	East Carroll	1928	N
016411	Butterfield Overland SE	KS	063	Gove	1998	O	284214	Grand Bayou STOR(93)SALT	LA10	007	Assumption	1968	ONA
154174	Collinson STOR(47)ABD(93)	KS	035	Cowley			306916	Harper Jefferson Island	LA50	069	Natchitoches	1998	N
016268	Colokan Colony	KS	071	Greeley	1998	ON	356843	Jefferson Island STOR(96)SALT	LA10	045	Iberia	1938	ONA
154670	<i>Colony-Welda</i> Alias for: (154670) Colony-Welda [COMB] Colony-Welda SW	KS	003	Anderson	1916	ON	356843	Jefferson Island STOR(96)SALT	LA10	113	Vermilion	1938	ONA
016223	Converse	KS	001	Allien	1993	O	397811	Lake Salvador	LA10	051	Jefferson	1940	ON
158638	Cunningham	KS	009	Barton	1941	ON	866066	Main Pass Bk 66	LA05	990	Offshore-State	1998	N
174542	Elk City STOR(78)	KS	151	Pratt	1931	ON	498735	Napoleonville STOR(94)SALT	LA10	007	Assumption	1943	ONA
219074	Emmanuel STOR(58)	KS	049	Elk	1918	ON	016348	Niblett Bluff	LA10	019	Calcasieu	1998	OA
016205	Feterita	KS	147	Phillips	1998	O	016425	Second Bayou NE	LA10	023	Cameron	1998	N
016206	Feterita East	KS	189	Stevens	1987	N	894047	Ship Shoal Bk 47	LA05	990	Offshore-State	1997	O
016207	Garrett South	KS	189	Stevens	1998	N	666331	Sorrento	LA10	005	Ascension	1929	ONA
011956	Gentzler SW	KS	167	Russell	1998	O	750240	STOR(91)SALT Washington	LA10	097	St Landry	1951	ONA
413421	Liberty South STOR(48)ABD(96)	KS	125	Montgomery			Michigan						
016208	Lippoldt SE	KS	083	Hodgeman	1998	O	007914	Albion-Pulaski-Scipio-Trnd	MI	025	Calhoun	1957	ONA
016326	Long-Simpson	KS	039	Decatur	1998	O	016232	Allis 34-34N-2E	MI	141	Presque Isle	1997	OA
426318	Longton STOR ABD(84) <i>arshall</i>	KS	019	Chautauqua			021616	Antrim	MI	001	Alcona	1965	N
462049	McLouth STOR(54)	KS	073	Greenwood	1939	O	021616	Antrim	MI	007	Alpena	1965	N
465219	Medicine River	KS	007	Barber	1964	ONA	021616	Antrim	MI	019	Benzie	1965	N
502417	Neola	KS	185	Stafford	1934	ON	021616	Antrim	MI	029	Charlevoix	1965	N
016349	Nutty Combe	KS	023	Cheyenne	1997	O	021616	Antrim	MI	045	Eaton	1965	N
517124	Oak Valley South	KS	049	Elk	1944	N	021616	Antrim	MI	049	Genesee	1965	N
538159	Panoma Gas Area <i>anoma orth</i>	KS	067	Grant	1956	N	021616	Antrim	MI	065	Ingham	1965	N
016220	<i>anoma orth</i> Alias for: (538159) Panoma Gas Area [COMB] Ralie	KS	067	Grant			021616	Antrim	MI	067	Ionia	1965	N
599559	Richfield STOR(94)	KS	023	Cheyenne	1998	O	021616	Antrim	MI	081	Kent	1965	N
014129	Schumacher North	KS	129	Morton	1948	ON	021616	Antrim	MI	087	Lapeer	1965	N
016209	Sebes West	KS	033	Comanche	1992	ONA	021616	Antrim	MI	093	Livingston	1965	N
652900	Shirley	KS	083	Hodgeman	1998	O	021616	Antrim	MI	105	Mason	1965	N
016383	Shore Airport	KS	039	Decatur	1998	O	021616	Antrim	MI	119	Montmorency	1997	O
016426	Siverson	KS	087	Stanton	1998	ON	016250	Blair 29-26N-11W A	MI	055	Grand Traverse	1997	O
016427	Subera North <i>all</i>	KS	071	Greeley	1998	N	016251	Bloomfield Sec 8 <i>Cal ee</i>	MI	063	Huron	1997	O
016210	Wells North	KS	191	Sumner	1998	ON	Michigan						
016432	Will-Bros West	KS	079	Harvey	1998	OA	016262	Chester 15-29N-2W	MI	025	Calhoun	1957	O
016434	Wilsey NW	KS	007	Barber	1998	OA	016267	Colfax 24-25N-13W A	MI	137	Otsego	1997	O
791920	Zimmerman	KS	073	Greenwood	1969	O	016269	Columbia Sec 27	MI	019	Benzie	1997	O
Kentucky													
036808	Ballardsville STOR(64)ABD(84)	KY	185	Oldham	1931	N	016271	Convis 14-15-6W	MI	159	Van Buren	1997	O
040094	Barnsley STOR(91) <i>Cam bell Church</i>	KY	107	Hopkins	1964	ON	016281	Deerfield Sec 17	MI	025	Calhoun	1997	N
012134	Campbell Church Consol [RENAM]	KY	121	Knox	1932	N	016292	East Bay 05-26N-10W	MI	107	Mecosta	1997	O
004833	Canada Mountain STOR	KY	013	Bell	1974	N	016296	Ferry 23-14N-16W	MI	055	Grand Traverse	1997	O
009704	Canmer STOR(71)ABD(84)	KY	099	Hart	1960	N	016304	Green Lake 34-26N-12W	MI	127	Oceana	1998	O
009721	Crofton East STOR(81)	KY	047	Christian			301584	Hamilton North STOR(60)ABD(90)	MI	055	Grand Traverse	1997	N
194968	Doe Run STOR(46)AQF	KY	163	Meade	1900	ON	002747	Hamlin 13-19N-18W	MI	035	Clare	1952	N
210463	Eagle Creek STOR(63)ABD(82) <i>East Diamond</i>	KY	077	Gallatin	1963	N	016322	Lacey Cavern	MI	105	Mason	1972	OA
009704	<i>East Diamond</i> Alias for: (440051) Madisonville East [BLOCK] <i>lint ill</i>	KY	107	Hopkins			009822	Lee 04-1S-5W STOR(76)ABD(86) <i>oreed</i>	MI	015	Barry	1997	N
012752	Flint Hill Consol [RENAM]	KY	093	Hardin	1933	ON	449207	Marsac Creek STOR(79)ABD(84)	MI	025	Calhoun	1972	ON
286353	Gray STOR ABD(84)	KY	121	Knox	1971	N	016335	Mecosta Sec 3	MI	133	Osceola	1965	ON
289577	Greenville STOR(61) <i>reenville est</i>	KY	177	Muhlenberg	1929	ON	016341	Monterey Sec 2	MI	147	St Clair	1965	ON
303692	Hanson STOR(65)	KY	177	Muhlenberg	1962	ON	486611	Morton STOR ABD(84) <i>or ich</i>	MI	107	Mecosta	1946	N
305056	Hardeson Consol <i>ud es Cha el</i>	KY	107	Hopkins	1962	ON	Michigan						
005569	Kettle Island STOR(71)	KY	047	Christian	1954	ON	016356	Otsego Lake Sec 27	MI	123	Newaygo	1997	N
440051	Madisonville East	KY	013	Bell	1953	N	016357	Otsego Lake 30-29N-3W	MI	137	Otsego	1997	O
Minnesota													
							751666	Waterville-Waseca STOR(68)AQF	MN	161	Waseca	1998	O

Field Code	Field Name/ Alias/Remarks	State/ Sub	Co Code	County	Disc Year	Field Type	Field Code	Field Name/ Alias/Remarks	State/ Sub	Co Code	County	Disc Year	Field Type
Mississippi							Ohio						
004157	Baxterville SE	MS	091	Marion	1989	ONA		<i>olivar</i>	OH	157	Tuscarawas		
049728	Beaver Branch	MS	157	Wilkinson	1956	OA	015218	Alias for: (015218) Canton Consol	OH	157	Tuscarawas	1883	ONA
049945	Beaver Island	MS	157	Wilkinson	1997	N	329130	Canton Consol	OH	075	Holmes		
094161	Brookhaven	MS	085	Lincoln	1943	ONA		Holmes	OH	075	Holmes		
016221	Buttahatchie Hills	MS	095	Monroe	1997	O		STOR(54)					
016270	Comite Creek East	MS	005	Amite	1997	N	384106	Knox	OH	083	Knox	1945	N
223786	Eminence	MS	031	Covington				STOR(45)ABD(87)					
016303	STOR(70)SALT	MS	001	Adams	1997	O	427155	Lorain	OH	093	Lorain		
280509	Glasscock Cutoff	MS	095	Monroe	1982	N		STOR(48)					
	Goodwin	MS	095	Monroe	1982	N	753860	Weaver	OH	139	Richland		
	STOR							STOR(37)					
328510	Holly	MS	057	Itawamba	1997	N	759037	Wertz	OH	169	Wayne		
344890	Independence	MS	005	Amite	1988	N		STOR(74)ABD					
348006	Ireland	MS	001	Adams	1951	OA	Oklahoma						
016312	Jews Creek	MS	157	Wilkinson	1997	N		<i>da</i>	OK	123	Pontotoc		
003373	Lagrange	MS	001	Adams	1946	ONA	002892	Alias for: (002892) Ada District	OK	123	Pontotoc	1909	N
016193	Mize East	MS	129	Smith	1998	O	107414	Ada District	OK	101	Muskogee	1960	N
492967	Muldon	MS	095	Monroe	1952	N		Butler Creek	OK	029	Coal	1922	N
	STOR(72)							STOR(64)ABD(86)					
016343	Natchez Landing North	MS	001	Adams	1997	O	138766	Chiles Dome	OK	029	Coal	1922	N
016211	Oakvale Dome	MS	065	Jefferson Davis	1997	O		STOR(80)					
016360	Parker Creek	MS	067	Jones	1997	O	196239	Dombey	OK	007	Beaver	1957	ONA
662750	Smithdale South	MS	005	Amite	1976	ON		Dombey orth	OK	007	Beaver		
707572	Tiger	MS	111	Perry	1971	N	003372	Hammon North	OK	039	Custer	1982	N
752658	Wausau North	MS	153	Wayne	1965	ONA	327673	Holland	OK	007	Beaver	1967	OA
Missouri							Oregon						
002175	Florissant	MO	189	St Louis	1953	O	331765	Hopeton North	OK	151	Woods	1967	N
	STOR(89)AQF							STOR(76)					
Montana							Pennsylvania						
016237	Ator Creek	MT	091	Sheridan	1996	O		<i>labran</i>	PA	063	Indiana		
016245	Big Wall North	MT	065	Musselshell	1996	O	529067	Alias for: (529067) Osage City	OK	113	Osage	1904	OA
150516	Cobb	MT	035	Glacier			535555	Osage City	OK	143	Tulsa		ON
	STOR(62)						016430	Page District	OK	005	Atoka	1995	N
016192	Lambert South	MT	083	Richland	1996	O		Wardville South	OK	005	Atoka		
649614	Shelby	MT	101	Toole	1922	N	Oregon						
	STOR(59)ABD(91)						478835	Mist	OR	009	Columbia	1979	N
689163	Sundown	MT	083	Richland	1996	O		STOR(89)					
738821	Viking	MT	091	Sheridan	1996	O	Pennsylvania						
162240	Waterhole Creek	MT	025	Fallon	1997	O		<i>rtemas</i>	PA	009	Bedford		
Nebraska							Indiana						
063640	Big Springs	NE	049	Deuel	1951	N	063330	Alias for: (243009) Five Forks	PA	063	Indiana	1937	N
	STOR(76)ABD							Big Run	PA	063	Indiana		
Nevada							Indiana						
184088	Deadman Creek	NV	007	Elko	1996	O		STOR(70)					
New Mexico							Indiana						
071747	Blinebry West	NM10	025	Lea	1959	OA		<i>lac ha</i>	PA	007	Beaver		
012917	Bronco SW	NM10	025	Lea	1995	O	007460	Alias for: (097742) Brush Run	PA	065	Jefferson	1884	N
101648	Buffalo South	NM10	025	Lea	1971	ON	097742	Brush Run	PA	007	Beaver	1886	ON
103353	Bunker Hill	NM10	015	Eddy	1958	OA		STOR(70)					
106732	Burton North	NM10	015	Eddy	1964	ON		<i>Clar</i>	PA	063	Indiana		
128148	Cedar Point	NM10	005	Chaves	1956	ONA		Alias for: (063330) Big Run	PA	125	Washington		
016197	Chisum NE	NM10	005	Chaves	1996	O	186162	<i>Cross Cree</i>	PA	063	Indiana		
016171	Forehand Ranch SW	NM10	015	Eddy	1996	O		Alias for: (218322) Eldersville	PA	123	Warren	1888	N
284090	Grama Ridge	NM10	025	Lea	1956	ONA		Deerlick	PA	123	Warren		
016198	Humble City SW	NM10	025	Lea	1990	OA		STOR(50)ABD(91)					
016199	Indian Basin East	NM10	015	Eddy	1996	N		<i>Done al</i>	PA	125	Washington		
002995	Islar	NM10	005	Chaves	1982	N		Alias for: (465885) Mehaffy	PA	125	Washington		
401252	Langlie-Mattix	NM10	025	Lea	1929	ONA		<i>Duhrin</i>	PA	053	Forest		
016200	Los Medanos North	NM10	015	Eddy	1996	N	008117	Alias for: (752045) Watson-Duhring	PA	023	Cameron	1933	N
579667	Querecho Plains North	NM10	025	Lea	1991	ONA	218322	East Fork-Wharton	PA	023	Cameron	1890	N
015821	Rocky Arroyo SE	NM10	015	Eddy	1997	N	241424	Eldersville	PA	125	Washington	1905	N
750376	Washington Ranch	NM10	015	Eddy	1972	ONA	243009	Finley West	PA	059	Greene	1962	N
	STOR(82)							Five Forks	PA	009	Bedford		
New York							Indiana						
	<i>drian</i>						276843	Glenshaw	PA	003	Allegheny	1888	ON
004535	Alias for: (004535) Adrian Reef	NY	101	Steuben				<i>ead</i>	PA	059	Greene		
016410	Adrian Reef	NY	101	Steuben	1971	N		Alias for: (241424) Finley West	PA	059	Greene		
016410	Bryant Hill Creek	NY	009	Cattaraugus	1996	N		<i>olbroo</i>	PA	059	Greene		
107414	Butler Creek	NY	117	Wayne	1996	N		Alias for: (007376) Woodruff	PA	059	Greene		
016413	Castile	NY	121	Wyoming	1996	N		<i>unters Cave</i>	PA	059	Greene		
016414	Conewango Creek	NY	013	Chautauqua	1996	N		Alias for: (693302) Sycamore	PA	065	Jefferson		
016415	Connoisarauley Creek	NY	009	Cattaraugus	1996	N		<i>o a</i>	PA	065	Jefferson		
016416	Crosby Creek	NY	101	Steuben	1996	N	368790	Alias for: (007460) Brookville	PA	047	Elk	1876	ON
016418	Dutch Hollow	NY	121	Wyoming	1996	N		Kane	PA	047	Elk		
016419	Falsom Creek	NY	013	Chautauqua	1996	N		STOR ABD(85)					
236172	Farmersville	NY	003	Allegany	1966	ON		<i>easey</i>	PA	019	Butler		
271983	Gilbert	NY	003	Allegany	1928	N		Alias for: (636376) Saxonburg	PA	063	Indiana		
	STOR(40)ABD(92)							<i>inter</i>	PA	063	Indiana		
339237	Hungry Hollow	NY	101	Steuben	1996	N	001966	Alias for: (447810) Marion Center	PA	111	Somerset	1981	N
016421	Jackson Hill	NY	101	Steuben	1996	N	447810	Marion Center	PA	063	Indiana	1891	N
372929	Kelly Hill	NY	013	Chautauqua	1996	N	465885	Mehaffy	PA	125	Washington	1890	N
405654	Lawtons	NY	029	Erie	1946	N		<i>t oyal</i>	PA	003	Allegheny		
009468	Northwoods	NY	121	Wyoming	1996	N		Alias for: (276843) Glenshaw	PA	065	Jefferson		
016424	Purdy Creek	NY	101	Steuben	1996	N		<i>underf</i>	PA	065	Jefferson		
686621	Sugar Creek	NY	123	Yates	1996	N		Alias for: (749821) Warsaw	PA	019	Butler		
722702	Tuscarora	NY	101	Steuben	1944	N	567146	Portman	PA	019	Butler		
	STOR(50)							STOR(49)					
752910	Wayne-Dundee	NY	101	Steuben	1930	N	636376	Saxonburg	PA	019	Butler	1888	ON
752910	Wayne-Dundee	NY	123	Yates	1930	N		STOR(54)ABD					
016431	Wells College	NY	011	Cayuga	1996	N		<i>Sharon</i>	PA	105	Potter		
North Dakota							Indiana						
016412	Cabernet	ND	025	Dunn	1996	N	648002	Alias for: (648002) Sharon Center	PA	105	Potter	1903	OA
161474	Corey Butte	ND	011	Bowman	1997	O	007340	Sharon Center	PA	063	Indiana	1900	N
016186	Crater	ND	089	Stark	1996	O		<i>S arts est</i>	PA	059	Greene		
016417	Customs	ND	013	Burke	1997	N		Alias for: (693302) Sycamore	PA	059	Greene	1895	N
016422	Livestock	ND	089	Stark	1997	N	709091	Sycamore	PA	117	Tioga	1930	N
541724	Passport	ND	101	Ward	1997	O		Tioga	PA	117	Tioga		
016187	Subdivision	ND	089	Stark	1996	O		STOR(51)					
016428	Sunset Butte	ND	011	Bowman	1997	N	749821	Warsaw	PA	065	Jefferson	1915	N
Ohio							Indiana						
015218	Alias for: (015218) Canton Consol	OH	157	Tuscarawas			752045	Watson-Duhring	PA	053	Forest	1883	ON
329130	Canton Consol	OH	157	Tuscarawas				<i>harton</i>	PA	023	Cameron		
384106	Knox	OH	083	Knox			007376	Woodruff	PA	059	Greene	1905	N
427155	Lorain	OH	093	Lorain				Alias for: (008117) East Fork-Wharton	PA	059	Greene		
753860	Weaver	OH	139	Richland			Tennessee						
759037	Wertz	OH	169	Wayne			413514	Lick Branch	TN	151	Scott	1976	ON
	STOR(74)ABD							STOR(95)					

TEXAS

Field Code	Field Name/ Alias/Remarks	State/ Sub	Co Code	County	Disc Year	Field Type	Field Code	Field Name/ Alias/Remarks	State/ Sub	Co Code	County	Disc Year	Field Type
Texas							015942	Nstb	TX75	443	Terrell	1996	N
016231	Alleyton	TX30	089	Colorado	1996	N	016351	NWR	TX70	133	Eastland	1996	N
015230	Ambassador	TX90	077	Clay	1950	OA	016352	Orangefield	TX30	361	Orange	1996	N
	STOR(58)ABD(93)						016354	Oso Negro	TX80	371	Pecos	1997	N
015511	Amore	TX40	215	Hidalgo	1996	N	531578	Overlook	TX75	095	Concho	1997	N
016233	Anne Parsons	TX30	373	Polk	1997	N	016358	Pac "54"	TX80	173	Glasscock	1995	O
016234	Antero	TX95	211	Hemphill	1996	N	537942	Panhandle West	TX95	179	Gray	1918	N
016240	Balthrop	TX30	481	Wharton	1998	N	016359	Panteam	TX80	135	Ector	1996	N
037242	Bammel	TX30	201	Harris	1938	ONA	005976	Park South	TX80	329	Midland	1995	O
	STOR(75)						550800	Perry	TX95	357	Ochiltree	1995	O
015931	Barbara M	TX90	077	Clay	1996	N	005999	Perryton South	TX95	357	Ochiltree	1996	O
016241	Beano	TX10	137	Edwards	1997	N	554962	Pickton	TX50	223	Hopkins	1944	ONA
055494	Benavides	TX40	479	Webb	1982	N		STOR(83)ABD(96)					
058997	Bethel	TX60	001	Anderson	1956	ON	015935	Pioneer-Miller	TX75	399	Runnels	1994	N
	STOR(91)SALT						015947	Porcelain	TX70	049	Brown	1994	N
009684	Bethel Dome	TX60	001	Anderson	1973	OA	013728	Porter Ranch	TX80	371	Pecos	1995	N
	STOR(74)SALT						568851	Pottsville South	TX70	193	Hamilton	1947	N
060292	Bibb East	TX70	093	Comanche	1949	ONA		STOR(67)ABD(91)					
	STOR ABD(75)						016367	Putski	TX30	167	Galveston	1996	N
016246	Big Wally	TX70	143	Erath	1997	N	016368	Rachui	TX50	395	Robertson	1997	N
016248	Bitterweed South	TX80	371	Pecos	1997	N	016372	Redemption	TX75	105	Crockett	1997	N
069701	Blackwell Moore	TX70	441	Taylor	1996	OA	016373	Right Field Red	TX95	421	Sherman	1996	O
016216	Bob-Rob	TX80	371	Pecos	1996	O	016375	Rolling Rock	TX30	089	Colorado	1996	N
078707	Boling	TX30	481	Wharton	1923	ONA	016376	Rolling Rock North	TX30	089	Colorado	1997	N
	STOR(81)SALT						016378	Rosita East	TX40	131	Duval	1997	N
016174	Bravenec	TX30	481	Wharton	1996	N	615006	Rotherwood West	TX30	201	Harris	1955	OA
091464	Bridge	TX85	165	Gaines	1995	O		STOR(93)					
099028	Bryson South	TX90	237	Jack	1950	OA	015946	Saddle Butte West	TX80	371	Pecos	1995	N
	STOR(74)						628409	San Eduardo	TX40	247	Jim Hogg	1950	ON
016257	Burns Ranch	TX10	283	La Salle	1997	N	016380	Sanford Dvorin	TX50	113	Dallas	1997	N
016201	Caddo Creek	TX50	395	Robertson	1997	N	016381	Savell	TX50	395	Robertson	1997	N
015933	Cerf	TX80	371	Pecos	1994	N	015936	Sedona Carol	TX75	095	Concho	1994	N
016260	Channelview	TX30	201	Harris	1998	N	016382	Sheridan NE	TX30	089	Colorado	1997	N
132814	Chaparral	TX70	049	Brown	1991	O	016385	Sokol	TX10	507	Zavala	1996	N
016261	Chappy	TX10	507	Zavala	1996	N	669617	Spindletop	TX30	245	Jefferson	1901	ONA
016264	Ciervo Grande	TX30	481	Wharton	1997	N		STOR(92)SALT					
147307	Clear Lake West	TX30	201	Harris	1938	N	670547	Spraberry	TX80	329	Midland	1996	O
	STOR(75)						016390	Stealth	TX90	237	Jack	1997	N
016265	Cled	TX10	507	Zavala	1996	N	683893	Stratton Ridge	TX30	039	Brazoria	1945	OA
015938	Corky Nix	TX75	383	Reagan	1994	N		STOR(86)SALT					
016274	Cosco	TX70	363	Palo Pinto	1997	N	016392	Stucky	TX50	289	Leon	1997	N
016276	Cow Gully	TX30	167	Galveston	1997	N	016164	Tooter	TX80	227	Howard	1996	O
016278	Crasco	TX30	089	Colorado	1996	N	716897	Tri-Cities	TX50	213	Henderson	1941	ONA
016202	Cyclone	TX05	990	Offshore-State	1996	N		STOR(54)					
016279	Darlin	TX80	103	Crane	1996	O	016157	Triple Crown	TX70	429	Stephens	1994	N
183162	Dayton North	TX30	291	Liberty	1905	ONA	720098	Tuffy	TX95	393	Roberts	1996	O
	STOR(94)SALT						016158	Turner Wade	TX70	417	Shackelford	1994	N
016280	De Joria	TX10	507	Zavala	1996	N	016397	Umbrella Point NE	TX30	071	Chambers	1997	N
016282	Denike-Tom Phillips	TX30	039	Brazoria	1997	N	016159	Uncle Jack	TX70	253	Jones	1996	N
016285	Deweyville South	TX30	351	Newton	1997	N	016161	Upper Johnson Crossing	TX70	429	Stephens	1994	N
016287	Double A Wells West	TX30	373	Polk	1997	N	016165	Ventame SE	TX80	135	Ector	1996	O
016288	Drakes Branch South	TX30	457	Tyler	1996	N	016399	Vidor Ames South	TX30	361	Orange	1996	N
204114	Dubois	TX50	251	Johnson	1997	N	738604	View	TX70	441	Taylor	1939	ON
016291	Eagle Bay	TX30	167	Galveston	1997	N		STOR(53)ABD(92)					
016293	Egypt North	TX30	481	Wharton	1997	N	016166	Vincent SW	TX80	227	Howard	1994	O
016190	El Torito West	TX20	239	Jackson	1996	N	016400	Vindicator	TX50	161	Freestone	1997	N
218915	Elizabeth	TX40	505	Zapata	1997	N	739348	Vinegarone	TX10	137	Edwards	1955	N
016294	Elliott North	TX30	199	Hardin	1995	N	016162	Walking-3	TX70	083	Coleman	1996	N
238583	Felmac	TX85	165	Gaines	1955	ON	016167	Wedge	TX80	317	Martin	1996	O
	STOR(94)						016402	White Heron North	TX30	071	Chambers	1998	N
016297	Four Square	TX10	137	Edwards	1996	N	015937	Whiteland	TX75	307	McCulloch	1996	N
016196	Geaslin	TX75	443	Terrell	1995	N	016176	Wickizer	TX30	339	Montgomery	1996	N
015939	Geo 536	TX75	399	Runnels	1996	N	016403	Wildflower	TX10	465	Val Verde	1996	N
015934	Goat Roper	TX80	371	Pecos	1994	N	016163	Wilham	TX70	417	Shackelford	1997	N
286062	Grassy Lake	TX50	289	Leon	1997	N	773840	Winslow	TX70	429	Stephens	1997	N
016204	Hansford NW	TX95	195	Hansford	1997	N	776236	Wolf Creek	TX95	357	Ochiltree	1995	O
310450	Hawkins	TX60	499	Wood	1940	ONA	779584	Worsham-Steed	TX90	237	Jack	1950	OA
	STOR(58)ABD(84)						016407	Z-Bar	TX40	247	Jim Hogg	1997	N
848009	High Island Blk 9	TX05	990	Offshore-State	1997	N	Utah						
848011	High Island Blk 11	TX05	990	Offshore-State	1997	N	016249	Black Bull	UT	037	San Juan	1992	O
322309	Hilbig	TX10	021	Bastrop	1953	OA	091743	Bridger Lake	UT	043	Summit	1966	OA
	STOR(93)							STOR(77)ABD(91)					
016308	Hog & Frog	TX10	507	Zavala	1996	N	146315	Clay Basin	UT	009	Daggett	1927	N
016309	Hudgins Ranch	TX30	481	Wharton	1997	N		STOR(76)					
016175	Hueyville	TX30	351	Newton	1996	N	150268	Coalville	UT	043	Summit		
341617	Hyde	TX70	363	Palo Pinto	1997	N		STOR(72)AQF					
016310	Jacob-4	TX30	373	Polk	1997	N	016226	Pack Mountain	UT	047	Uintah	1989	O
016313	Jm West	TX75	105	Crockett	1997	N	016194	Pariette Draw	UT	047	Uintah	1987	N
016314	Joe Snell	TX85	115	Dawson	1997	O	Washington						
016316	Judy Dickson	TX90	337	Montague	1997	O	353192	Jackson Prairie	WA	041	Lewis		
370123	Katy	TX30	157	Fort Bend	1938	ONA		STOR(64)AQF					
	STOR(93)						West Virginia						
376091	Kerens	TX50	349	Navarro	1942	ON	028700	Aspinall-Finster	WV	041	Lewis	1909	N
	ABD 52 REV 96							STOR(80)					
015929	Kirsten	TX95	483	Wheeler	1994	N		rid e ort					
016319	Knobloch	TX90	503	Young	1997	N		Alias for: (091681) Bridgeport-Pruntytown [COMB]					
016321	L G Cook North	TX70	417	Shackelford	1995	N	091681	Bridgeport-Pruntytown	WV	033	Harrison	1909	N
016172	La Grulla	TX40	427	Starr	1996	N		STOR(36)					
016173	La Grulla Deep	TX40	427	Starr	1995	N	157615	Conings	WV	021	Gilmer	1921	O
393347	Lacey	TX95	211	Hemphill	1996	N		STOR					
016324	Lazy K	TX50	289	Leon	1997	N		Drain					
015941	Linda Roberts	TX75	095	Concho	1995	N		Alias for: (157615) Conings [ALTER]					
015930	Loesch	TX95	295	Lipscomb	1996	N	219529	Elk-Poca (Sissonville)	WV	035	Jackson	1924	ON
015932	Long Bend	TX90	503	Young	1996	N		STOR(49)					
016179	Loretta	TX80	135	Ector	1997	O	219529	Elk-Poca (Sissonville)	WV	039	Kanawha	1924	ON
016328	Luce Bayou	TX30	291	Liberty	1996	N		STOR(49)					
016329	Lueyville	TX30	351	Newton	1996	N	234622	Fallen Timber (Mobley)	WV	103	Wetzel	1893	O
016330	M A F	TX75	105	Crockett	1996	N		ayes					
447998	Markham	TX30	321	Matagorda	1908	ONA		Alias for: (444340)					

Field Code	Field Name/ Alias/Remarks	State/ Sub	Co Code	County	Disc Year	Field Type	Field Code	Field Name/ Alias/Remarks	State/ Sub	Co Code	County	Disc Year	Field Type
	oca	WV	035	Jackson				rand sle l	LA00	995	Offshore-Federal		
	Alias for: (219529) Elk-Poca (Sissonville) [COMB]							Alias for: (842009) Grand Isle Blk 9 [BLOCK]					
	alei h	WV	081	Raleigh				rand sle l	LA00	995	Offshore-Federal		
	Alias for: (659945) Slab Fork [COMB]							Alias for: (842041) Grand Isle Blk 41 [BLOCK]					
	hodes	WV	041	Lewis			842041	Grand Isle Blk 41	LA00	995	Offshore-Federal	1964	ON
	Alias for: (028700) Aspinall-Finster [ALTER]							rand sle l	LA00	995	Offshore-Federal		
	iley	WV	035	Jackson				Alias for: (842072) Grand Isle Blk 72 [BLOCK]					
	Alias for: (602814) Ripley South [RENAME]							Grand Isle Blk 72	LA00	995	Offshore-Federal	1966	N
602814	Ripley South	WV	035	Jackson		1966	842072	rand sle l	LA00	995	Offshore-Federal		
652900	Shirley	WV	095	Tyler		1893		Alias for: (842072) Grand Isle Blk 72 [BLOCK]					
	STOR(75)							rand sle S l	LA00	995	Offshore-Federal		
	S in Cree	WV	041	Lewis				Alias for: (844095) Grand Isle SA Blk 95 [BLOCK]					
	Alias for: (028700) Aspinall-Finster [ALTER]							Grand Isle SA Blk 95	LA00	995	Offshore-Federal	1967	ON
659945	Slab Fork	WV	081	Raleigh		1922	844095	Green Canyon Blk 141	LA00	995	Offshore-Federal	1987	O
	STOR(58)						846141	reen Canyon l	LA00	995	Offshore-Federal		
701821	Terra Alta	WV	077	Preston		1944		Alias for: (846244) Green Canyon Blk 244 [BLOCK]					
	STOR(60)							Green Canyon Blk 244	LA00	995	Offshore-Federal	1994	O
								High Island EA Blk A244	LA00	995	Offshore-Federal	1983	N
								ain ass l	LA00	995	Offshore-Federal		
604880	Billy Creek	WY	019	Johnson		1923		Alias for: (866120) Main Pass Blk 120 [BLOCK]					
	STOR(47)							Main Pass Blk 120	LA00	995	Offshore-Federal	1977	N
103353	Bunker Hill	WY	007	Carbon		1937	866120	ain ass l	LA00	995	Offshore-Federal	1972	ON
	STOR(73)						866140	Main Pass Blk 140	LA00	995	Offshore-Federal		
218981	Elk Basin	WY	029	Park		1915		ain ass l	LA00	995	Offshore-Federal		
	STOR(49)							Alias for: (866140) Main Pass Blk 140 [BLOCK]					
381509	Kirk	WY	013	Fremont		1954	868162	Main Pass EA Blk 162	LA00	995	Offshore-Federal	1998	N
	STOR(72)						868178	Main Pass EA Blk 178	LA00	995	Offshore-Federal	1998	N
	ir anch	WY	013	Fremont			868259	Main Pass EA Blk 259	LA00	995	Offshore-Federal	1990	N
411227	Leroy	WY	041	Uinta				ain ass E l	LA00	995	Offshore-Federal		
	STOR(71)AQF							Alias for: (868265) Main Pass EA Blk 265 [BLOCK]					
005632	Mahoney Dome East	WY	007	Carbon		1923	868265	Main Pass EA Blk 265	LA00	995	Offshore-Federal	1984	N
	ahoney East	WY	007	Carbon				ain ass E l	LA00	995	Offshore-Federal		
520968	Oil Springs	WY	007	Carbon		1938	868280	Alias for: (868265) Main Pass EA Blk 265 [BLOCK]					
	STOR(52)							Main Pass EA Blk 280	LA00	995	Offshore-Federal	1998	N
								PBI 868263					
								ain ass S l	LA00	995	Offshore-Federal		
								Alias for: (870283) Main Pass SA Blk 283 [BLOCK]					
								Main Pass SA Blk 283	LA00	995	Offshore-Federal	1997	O
								ain ass S l	LA00	995	Offshore-Federal		
862008	Atwater Valley Blk 8	LA00	995	Offshore-Federal		1997	870283	ain ass S l	LA00	995	Offshore-Federal		
	East Cameron l	LA00	995	Offshore-Federal				Alias for: (870283) Main Pass SA Blk 283 [BLOCK]					
	Alias for: (824033) East Cameron Blk 33 [BLOCK]							Main Pass SA Blk 290	LA00	995	Offshore-Federal	1967	ONA
824033	East Cameron Blk 33	LA00	995	Offshore-Federal		1960	870290	ississi l Canyon l	LA00	995	Offshore-Federal		
	East Cameron l	LA00	995	Offshore-Federal				Alias for: (874109) Mississippi Canyon Blk 109 [BLOCK]					
	Alias for: (824089) East Cameron Blk 89 [BLOCK]							Mississippi Canyon Blk 109	LA00	995	Offshore-Federal	1984	O
824089	East Cameron Blk 89	LA00	995	Offshore-Federal		1963	874109	ississi l Canyon l	LA00	995	Offshore-Federal		
824160	East Cameron Blk 160	LA00	995	Offshore-Federal		1956		ississi l Canyon l	LA00	995	Offshore-Federal		
	East Cameron l	LA00	995	Offshore-Federal				Alias for: (874109) Mississippi Canyon Blk 109 [BLOCK]					
	Alias for: (824160) East Cameron Blk 160 [BLOCK]							ississi l Canyon l	LA00	995	Offshore-Federal		
824171	East Cameron Blk 171	LA00	995	Offshore-Federal		1996	874292	Alias for: (874292) Mississippi Canyon Blk 292 [BLOCK]					
	East Cameron l	LA00	995	Offshore-Federal				Mississippi Canyon Blk 292	LA00	995	Offshore-Federal	1996	O
	Alias for: (824171) East Cameron Blk 171 [BLOCK]							ississi l Canyon l	LA00	995	Offshore-Federal		
826257	East Cameron SA Blk 257	LA00	995	Offshore-Federal		1972		Alias for: (874731) Mississippi Canyon Blk 731 [BLOCK]					
	East Cameron S l	LA00	995	Offshore-Federal				ississi l Canyon l	LA00	995	Offshore-Federal		
	Alias for: (937533) West Cameron SA Blk 533 [BLOCK]							Alias for: (874755) Mississippi Canyon Blk 755 [BLOCK]					
	East Cameron S l	LA00	995	Offshore-Federal				Mississippi Canyon Blk 731	LA00	995	Offshore-Federal	1987	N
	Alias for: (826257) East Cameron SA Blk 257 [BLOCK]							Mississippi Canyon Blk 755	LA00	995	Offshore-Federal	1986	N
	East Cameron S l	LA00	995	Offshore-Federal				Mississippi Canyon Blk 819	LA00	995	Offshore-Federal	1997	N
	Alias for: (826321) East Cameron SA Blk 321 [BLOCK]							Ship Shoal Blk 28	LA00	995	Offshore-Federal	1949	ON
826321	East Cameron SA Blk 321	LA00	995	Offshore-Federal		1971	894028	Shi Shoal l	LA00	995	Offshore-Federal		
826338	East Cameron SA Blk 338	LA00	995	Offshore-Federal		1973		Alias for: (894028) Ship Shoal Blk 28 [BLOCK]					
	East Cameron S l	LA00	995	Offshore-Federal				Ship Shoal Blk 37	LA00	995	Offshore-Federal	1969	N
	Alias for: (826338) East Cameron SA Blk 338 [BLOCK]							PBI 159661					
	East Cameron S l	LA00	995	Offshore-Federal				Shi Shoal l	LA00	995	Offshore-Federal		
	Alias for: (840065) Garden Banks Blk 65 [BLOCK]							Alias for: (894158) Ship Shoal Blk 158 [BLOCK]					
	East Cameron S l	LA00	995	Offshore-Federal				Shi Shoal l	LA00	995	Offshore-Federal		
	Alias for: (826338) East Cameron SA Blk 338 [COMB]							Alias for: (829188) Eugene Island Blk 188 [BLOCK]					
	East Cameron S l	LA00	995	Offshore-Federal				Shi Shoal l	LA00	995	Offshore-Federal		
	Alias for: (840065) Garden Banks Blk 65 [BLOCK]							Alias for: (894154) Ship Shoal Blk 154 [BLOCK]					
829089	Eugene Island Blk 89	LA00	995	Offshore-Federal		1949	894154	Ship Shoal Blk 154	LA00	995	Offshore-Federal	1955	ONA
	Eu ene sland l	LA00	995	Offshore-Federal			894158	Ship Shoal Blk 158	LA00	995	Offshore-Federal	1960	N
	Alias for: (829089) Eugene Island Blk 89 [BLOCK]							Shi Shoal l	LA00	995	Offshore-Federal		
	Eu ene sland l	LA00	995	Offshore-Federal				Alias for: (894154) Ship Shoal Blk 154 [BLOCK]					
	Alias for: (829128) Eugene Island Blk 128 [BLOCK]							Ship Shoal Blk 186	LA00	995	Offshore-Federal	1961	N
829128	Eugene Island Blk 128	LA00	995	Offshore-Federal		1955	894186	Shi Shoal l	LA00	995	Offshore-Federal		
	Eu ene sland l	LA00	995	Offshore-Federal				Alias for: (894186) Ship Shoal Blk 186 [BLOCK]					
	Alias for: (829128) Eugene Island Blk 128 [BLOCK]							Ship Shoal SA Blk 253	LA00	995	Offshore-Federal	1962	ON
	Eu ene sland l	LA00	995	Offshore-Federal				Shi Shoal S l	LA00	995	Offshore-Federal		
	Alias for: (829128) Eugene Island Blk 128 [BLOCK]							Alias for: (896253) Ship Shoal SA Blk 253 [BLOCK]					
829147	Eugene Island Blk 147	LA00	995	Offshore-Federal		1982	896274	Ship Shoal SA Blk 274	LA00	995	Offshore-Federal	1965	ON
	Eu ene sland l	LA00	995	Offshore-Federal				Shi Shoal S l	LA00	995	Offshore-Federal		
	Alias for: (829147) Eugene Island Blk 147 [BLOCK]							Alias for: (896274) Ship Shoal SA Blk 274 [BLOCK]					
	Eu ene sland l	LA00	995	Offshore-Federal				Ship Shoal SA Blk 326	LA00	995	Offshore-Federal	1998	N
	Alias for: (829159) Eugene Island Blk 159 [BLOCK]							South Marsh Is NA Blk 243	LA00	995	Offshore-Federal	1974	N
	Eu ene sland l	LA00	995	Offshore-Federal				South arsh s l	LA00	995	Offshore-Federal		
	Alias for: (829175) Eugene Island Blk 175 [BLOCK]							Alias for: (900243) South Marsh Is NA Blk 243 [BLOCK]					
	Eu ene sland l	LA00	995	Offshore-Federal				South arsh s l	LA00	995	Offshore-Federal		
829159	Eugene Island Blk 159	LA00	995	Offshore-Federal		1985		Alias for: (900269) South Marsh Is NA Blk 269 [BLOCK]					
829173	Eugene Island Blk 173	LA00	995	Offshore-Federal		1984	900269	South Marsh Is NA Blk 269	LA00	995	Offshore-Federal	1973	ON
829175	Eugene Island Blk 175	LA00	995	Offshore-Federal		1956	901073	South Marsh Is SA Blk 73	LA00	995	Offshore-Federal	1963	ON
829188	Eugene Island Blk 188	LA00	995	Offshore-Federal		1956		South arsh s S l	LA00	995	Offshore-Federal		
	Eu ene sland l	LA00	995	Offshore-Federal				Alias for: (901073) South Marsh Is SA Blk 73 [BLOCK]					
	Alias for: (829188) Eugene Island Blk 188 [BLOCK]							South arsh s S l	LA00	995	Offshore-Federal		
	Eu ene sland l	LA00	995	Offshore-Federal				Alias for: (901115) South Marsh Is SA Blk 115 [BLOCK]					
	Alias for: (829208) Eugene Island Blk 208 [BLOCK]							South arsh s S l	LA00	995	Offshore-Federal		
829208	Eugene Island Blk 208	LA00	995	Offshore-Federal		1958	901115	South Marsh Is SA Blk 115	LA00	995	Offshore-Federal	1971	ON
	Eu ene sland l	LA00	995	Offshore-Federal				South Marsh Is SA Blk 128	LA00	995	Offshore-Federal	1975	ON
	Alias for: (829208) Eugene Island Blk 208 [MULTI]							South arsh s S l	LA00	995	Offshore-Federal		
831289	Eugene Island SA Blk 289	LA00	995	Offshore-Federal		1993	901128	South Marsh Is SA Blk 128	LA00	995	Offshore-Federal		
831306	Eugene Island SA Blk 306	LA00	995	Offshore-Federal		1971		South arsh s S l	LA00	995	Offshore-Federal		
</													

F.O.-LOUISIANA

Field Code	Field Name/ Alias/Remarks	State/ Sub	Co Code	County	Disc/ Year	Field Type	Field Code	Field Name/ Alias/Remarks	State/ Sub	Co Code	County	Disc/ Year	Field Type
919131	South imbalier l Alias for: (919131) South Timbalier Blk 131 [BLOCK]	LA00	995	Offshore-Federal	1958	ON	939311	West Cameron WA Blk 311	LA00	995	Offshore-Federal	1986	N
919156	South Timbalier Blk 131 South Timbalier Blk 156 South imbalier l Alias for: (919185) South Timbalier Blk 185 [BLOCK] South imbalier l Alias for: (919185) South Timbalier Blk 185 [BLOCK] South imbalier l Alias for: (919156) South Timbalier Blk 156 [BLOCK]	LA00	995	Offshore-Federal	1975	N	939313	West Cameron WA Blk 313 est Cameron l Alias for: (939414) West Cameron WA Blk 414 [BLOCK] West Cameron WA Blk 414 est Cameron l Alias for: (939414) West Cameron WA Blk 414 [BLOCK]	LA00	995	Offshore-Federal	1985	N
919185	South Timbalier Blk 185	LA00	995	Offshore-Federal	1967	N	942030	West Delta Blk 30 est Delta l Alias for: (942030) West Delta Blk 30 [BLOCK]	LA00	995	Offshore-Federal	1949	ONA
921217	South Timbalier SA Blk 217	LA00	995	Offshore-Federal	1963	N	942065	West Delta Blk 65 est Delta S l Alias for: (944117) West Delta SA Blk 117 [BLOCK]	LA00	995	Offshore-Federal	1998	N
921219	South Timbalier SA Blk 219	LA00	995	Offshore-Federal	1963	N	944117	West Delta SA Blk 117	LA00	995	Offshore-Federal	1963	ONA
921228	South Timbalier SA Blk 228	LA00	995	Offshore-Federal	1965	N	944119	West Delta SA Blk 119 est Delta S l Alias for: (944133) West Delta SA Blk 133 [BLOCK]	LA00	995	Offshore-Federal	1981	N
921245	South Timbalier SA Blk 245 PBI 921243 South imbalier S l Alias for: (921245) South Timbalier SA Blk 245 [BLOCK]	LA00	995	Offshore-Federal	1966	N	944133	West Delta SA Blk 133	LA00	995	Offshore-Federal	1966	ONA
929046	Vermilion Blk 46 ermilion l Alias for: (929046) Vermilion Blk 46 [BLOCK]	LA00	995	Offshore-Federal	1956	ON	F.O.-Other Gulf						
929120	Vermilion Blk 120 ermilion l Alias for: (929120) Vermilion Blk 120 [BLOCK]	LA00	995	Offshore-Federal	1957	ON	820133	Desoto Canyon Blk 133 Desoto Canyon l Alias for: (820133) Desoto Canyon Blk 133 [BLOCK]	OG00	995	Offshore-Federal	1993	N
929131	Vermilion Blk 131 PBI 929112 ermilion l Alias for: (929131) Vermilion Blk 131 [BLOCK]	LA00	995	Offshore-Federal	1960	N	886819	Mobile Blk 819	OG00	995	Offshore-Federal	1997	N
929187	Vermilion Blk 187 ermilion l Alias for: (929215) Vermilion Blk 215 [BLOCK]	LA00	995	Offshore-Federal	1987	N	886820	Mobile Blk 820 obile l Alias for: (886827) Mobile Blk 827 [BLOCK]	OG00	995	Offshore-Federal	1996	N
929215	Vermilion Blk 215 ermilion S l Alias for: (931315) Vermilion SA Blk 315 [BLOCK]	LA00	995	Offshore-Federal	1967	N	886827	Mobile Blk 827	OG00	995	Offshore-Federal	1986	N
931315	Vermilion SA Blk 315	LA00	995	Offshore-Federal	1980	OA	F.O.-Texas						
931336	Vermilion SA Blk 336 ermilion S l Alias for: (931355) Vermilion SA Blk 355 [BLOCK]	LA00	995	Offshore-Federal	1998	N	960025	Alaminos Canyon Blk 25	TX00	995	Offshore-Federal	1997	O
931355	Vermilion SA Blk 355	LA00	995	Offshore-Federal	1995	N	805007	Brazos Blk A7 ra os l Alias for: (807070) Brazos SA Blk A70 [BLOCK]	TX00	995	Offshore-Federal	1981	N
933033	Viosca Knoll Blk 33	LA00	995	Offshore-Federal	1996	N	805538	Brazos Blk 538 ra os l Alias for: (805538) Brazos Blk 538 [BLOCK]	TX00	995	Offshore-Federal	1968	N
933035	Viosca Knoll Blk 35	LA00	995	Offshore-Federal	1997	O	807070	Brazos SA Blk A70	TX00	995	Offshore-Federal	1968	N
933121	Viosca Knoll Blk 121	LA00	995	Offshore-Federal	1997	N	837210	Galveston Blk 210 alveston l Alias for: (837210) Galveston Blk 210 [BLOCK]	TX00	995	Offshore-Federal	1991	N
933122	Viosca Knoll Blk 122	LA00	995	Offshore-Federal	1997	O	837395	Galveston Blk 395	TX00	995	Offshore-Federal	1996	N
933123	Viosca Knoll Blk 123	LA00	995	Offshore-Federal	1997	N	839133	Galveston SA Blk A133	TX00	995	Offshore-Federal	1978	N
933252	Viosca Knoll Blk 252 iosca noll l Alias for: (933252) Viosca Knoll Blk 252 [BLOCK]	LA00	995	Offshore-Federal	1999	N	840065	Garden Banks Blk 65	TX00	995	Offshore-Federal	1988	N
933823	Viosca Knoll Blk 823	LA00	995	Offshore-Federal	1997	O	840179	Garden Banks Blk 179 arden an s l Alias for: (840387) Garden Banks Blk 387 [BLOCK]	TX00	995	Offshore-Federal	1997	N
933914	Viosca Knoll Blk 914 est Cameron l Alias for: (935040) West Cameron Blk 40 [BLOCK]	LA00	995	Offshore-Federal	1997	O	840387	Garden Banks Blk 387	TX00	995	Offshore-Federal	1990	O
935040	West Cameron Blk 40 est Cameron l Alias for: (935055) West Cameron Blk 55 [BLOCK]	LA00	995	Offshore-Federal	1955	N	849023	High Island Blk A23 i h sland l Alias for: (890010) Sabine Pass Blk 10 [BLOCK]	TX00	995	Offshore-Federal	1996	N
935055	West Cameron Blk 55	LA00	995	Offshore-Federal	1993	N	848086	High Island Blk 86	TX00	995	Offshore-Federal	1985	N
935092	West Cameron Blk 92	LA00	995	Offshore-Federal	1998	N	848088	High Island Blk 88	TX00	995	Offshore-Federal	1969	N
935110	West Cameron Blk 110 est Cameron l Alias for: (935149) West Cameron Blk 149 [BLOCK]	LA00	995	Offshore-Federal	1954	ON	848108	High Island Blk 108	TX00	995	Offshore-Federal	1996	N
935146	West Cameron Blk 146 est Cameron l Alias for: (935146) West Cameron Blk 146 [BLOCK]	LA00	995	Offshore-Federal	1971	N	848111	High Island Blk 111 i h sland l Alias for: (848086) High Island Blk 86 [BLOCK]	TX00	995	Offshore-Federal	1973	N
935149	West Cameron Blk 149	LA00	995	Offshore-Federal	1949	ON	848154	High Island Blk 154 i h sland l Alias for: (848154) High Island Blk 154 [COMB]	TX00	995	Offshore-Federal	1974	N
935157	West Cameron Blk 157 est Cameron l Alias for: (935180) West Cameron Blk 180 [BLOCK]	LA00	995	Offshore-Federal	1994	N	850200	High Island EA Blk A200 i h sland E l Alias for: (850200) High Island EA Blk A200 [BLOCK]	TX00	995	Offshore-Federal	1990	N
935180	West Cameron Blk 180 est Cameron l Alias for: (935192) West Cameron Blk 192 [BLOCK]	LA00	995	Offshore-Federal	1960	ON	850045	High Island EA Blk 45 PBI 850039	TX00	995	Offshore-Federal	1988	O
935192	West Cameron Blk 192	LA00	995	Offshore-Federal	1954	ONA	852279	High Island EA SX Blk A279 i h sland E S l Alias for: (852279) High Island EA SX Blk A279 [BLOCK]	TX00	995	Offshore-Federal	1974	N
935254	West Cameron Blk 254 est Cameron l Alias for: (935254) West Cameron Blk 254 [BLOCK]	LA00	995	Offshore-Federal	1990	N	852302	High Island EA SX Blk A302 i h sland E S l Alias for: (852302) High Island EA SX Blk A302 [MULTI] Alias for: (852317) High Island EA SX Blk A317 [MULTI]	TX00	995	Offshore-Federal	1975	N
935264	West Cameron Blk 264	LA00	995	Offshore-Federal	1981	N	852317	High Island EA SX Blk A317 i h sland E S l Alias for: (852302) High Island EA SX Blk A302 [MULTI] Alias for: (852317) High Island EA SX Blk A317 [MULTI]	TX00	995	Offshore-Federal	1974	N
935265	West Cameron Blk 265 est Cameron l Alias for: (935265) West Cameron Blk 265 [BLOCK]	LA00	995	Offshore-Federal	1974	ON	852330	High Island EA SX Blk A330 i h sland E S l Alias for: (852330) High Island EA SX Blk A330 [BLOCK]	TX00	995	Offshore-Federal	1973	N
935277	West Cameron Blk 277 est Cameron S l Alias for: (850244) High Island EA Blk A244 [BLOCK]	LA00	995	Offshore-Federal	1984	N	852334	High Island EA SX Blk A334 i h sland E S l Alias for: (852330) High Island EA SX Blk A330 [BLOCK]	TX00	995	Offshore-Federal	1974	ONA
937533	West Cameron SA Blk 533 est Cameron S l Alias for: (937587) West Cameron SA Blk 587 [BLOCK]	LA00	995	Offshore-Federal	1973	N	852384	High Island EA SX Blk A384 i h sland E S l Alias for: (852384) High Island EA SX Blk A384 [COMB]	TX00	995	Offshore-Federal	1976	ONA
937587	West Cameron SA Blk 587 est Cameron S l Alias for: (937587) West Cameron SA Blk 587 [BLOCK]	LA00	995	Offshore-Federal	1971	ON	854416	High Island SA Blk A416	TX00	995	Offshore-Federal	1979	N
937587	West Cameron SA Blk 587 est Cameron l Alias for: (939313) West Cameron WA Blk 313 [COMB]	LA00	995	Offshore-Federal	1971	ON	854419	High Island SA Blk A419	TX00	995	Offshore-Federal	1979	N
	West Cameron SA Blk 587 est Cameron l Alias for: (939311) West Cameron WA Blk 311 [BLOCK]	LA00	995	Offshore-Federal	1971	ON	854448	High Island SA Blk A448 i h sland S l Alias for: (854448) High Island SA Blk A448 [BLOCK]	TX00	995	Offshore-Federal	1978	N
							854467	High Island SA Blk A467	TX00	995	Offshore-Federal	1974	N

Field Code	Field Name/ Alias/Remarks	State/ Sub	Co Code	County	Disc Year	Field Type	Field Code	Field Name/ Alias/Remarks	State/ Sub	Co Code	County	Disc Year	Field Type
	<i>i h sland S l</i>	TX00	995	Offshore-Federal									
	Alias for: (854467) High Island SA Blk A467 [BLOCK]	TX00	995	Offshore-Federal									
	<i>i h sland S l</i>	TX00	995	Offshore-Federal									
	Alias for: (854540) High Island SA Blk A540 [BLOCK]	TX00	995	Offshore-Federal									
854540	High Island SA Blk A540	TX00	995	Offshore-Federal	1977	N							
854545	High Island SA Blk A545 PBI 854544	TX00	995	Offshore-Federal	1975	ONA							
873487	Matagorda Island Blk 487	TX00	995	Offshore-Federal	1989	N							
	<i>ata orda sland l</i>	TX00	995	Offshore-Federal									
	Alias for: (873710) Matagorda Island Blk 710 [BLOCK]	TX00	995	Offshore-Federal									
873710	Matagorda Island Blk 710	TX00	995	Offshore-Federal	1993	N							
875021	Mustang Island Blk A21	TX00	995	Offshore-Federal	1997	N							
890010	Sabine Pass Blk 10	TX00	995	Offshore-Federal	1979	N							

Invalid Field Record List Updates

KANSAS

Field Code	Field Name/ Comment	State/ Sub	Co Code	County	Field Code	Field Name/ Comment	State/ Sub	Co Code	County
Kansas									
007644	Otto East FIELD NAMED IN ERROR	KS	035	Cowley					
015420	Shimanek FIELD NAMED IN ERROR	KS	203	Wichita					
F.O.-Louisiana									
849023	High Island Blk A23 FIELD RESIDES OFFSHORE TEXAS	LA00	995	Offshore-Federal					
848108	High Island Blk 108 FIELD RESIDES OFFSHORE TEXAS	LA00	995	Offshore-Federal					
F.O.-Texas									
826373	East Cameron SA Blk 373 FIELD LISTED UNDER F.O. LOUISIANA	TX00	995	Offshore-Federal					
848039	High Island Blk 39 FIELD IS IN EAST ADDITION WITH FLDCODE 850039	TX00	995	Offshore-Federal					