

Oil and Gas Field Code Master List 1996 Updates

December 1996

Energy Information Administration
Office of Oil and Gas
U.S. Department of Energy
Washington, DC 20585

This report was prepared by the Energy Information Administration, the independent statistical and analytical agency within the Department of Energy. The information contained herein should not be construed as advocating or reflecting any policy position of the Department of Energy or any other organization.

Preface

The *Oil and Gas Field Code Master List Updates 1996* represents a departure from past Energy Information Administration (EIA) practice. This publication does **not** provide a list of all identified oil and gas fields in the United States as did the fourteen prior annual volumes of the *Oil and Gas Field Code Master List*. It provides updates to the Field Code Master File that were made subsequent to the publication of *Oil and Gas Field Code Master List 1995*, based on information collected through October 1996. These updates represent the addition of new fields to the list and changes to the records of previously listed fields, including deletions. This publication is therefore a supplement to the *Oil and Gas Field Code Master List 1995*, which its recipients were requested to retain.

In this and future years only the *Oil and Gas Field Code Master List Updates* will be printed. However, a corresponding copy of the unabridged *Oil and Gas Field Code Master List*, in this instance for 1996, will be available on the monthly EIA Energy InfoDisc CD-ROM, at the EIA World-Wide Web site <<http://www.eia.doe.gov>>, and in PK-zip compressed form on a 3.5-inch high-density floppy diskette available from the EIA Field Code Coordinator, Robert F. King (202-586-4787 or rking@eia.doe.gov).

The purpose of EIA's field code program is to provide unique, standardized codes for the identification of domestic fields. Use of these codes fosters consistency of field identification by government and industry. As a result of their widespread adoption they have in effect become a national standard. The use of field names and codes listed in this publication is required on survey forms and other reports regarding field-specific data collected by EIA. The surveys currently using these field codes are Form EIA-23, "Annual Survey of Domestic Oil and Gas Reserves", and Form EIA-191, "Underground Gas Storage Report".

EIA gratefully acknowledges the assistance provided by the various State organizations and trade associations in verifying the existence of fields and confirming their officially recognized names.

General information regarding this publication may be obtained from David F. Morehouse (202-586-4853), Reserves and Production Branch, Reserves and Natural Gas Division, in the Energy Information Administration's Office of Oil and Gas. Detailed information regarding the preparation of this document may be obtained from the EIA Field Code Coordinator, Robert F. King (202-586-4787 or rking@eia.doe.gov).

Contents

	Page
1. Overview	1
Introduction	1
Summary Statistics	1
Publication Organization and Content	2
History	2
Definition of Field	2
Coding of Fields	2
General Field Naming Conventions	3
2. Methodology for Field Code Assignments	5
Purpose	5
General System Overview	5
Field Information Research	5
State Source Review Procedures	5
Assigning New Field Code Numbers	7
Field Alias Procedures	7
Field Alias Records That Have Several Official Names	7
Fields With More Than One Name Change	7
Offshore Code Assignments	8
Field Naming Conventions	8
Use of Compass Directions in Field Names	8
Special Naming Conventions	8
Reused Field Names	9
Invalid Field Record Procedures	9
3. User's Guide	11
Field Code Master List Updates	11
Master Field Record	11
Alias Field Record	15
Coalbed Methane Field List	15
Storage Fields	15
Fields Located in Multiple Jurisdictions	15
Outer Continental Shelf Planning Areas	15
Glossary	36
Oil and Gas Field Code Master List Updates	39
Oil and Gas Invalid Field Record List	49
Tables	
1. List of Authorities on Oil and Gas Field Nomenclature	4
2. State Abbreviations and Geographic Subdivision Codes	13
3. U.S. Geological Survey Alaska Quadrangles and Associated Codes	14
4. Coalbed Methane Fields	16
5. Storage Fields	18
6. Fields Located in Multiple Jurisdictions	23
Figures	
1. Field Code Processing Flow Chart	6
2. Sample Page	12
3. Subdivisions of Alaska and U.S. Geological Survey Quadrangles	28
4. Subdivisions of California	29
5. Subdivisions of Louisiana	30
6. Subdivisions of New Mexico	31
7. Subdivisions of Texas	32
8. Western Planning Area, Gulf of Mexico Outer Continental Shelf Region	33
9. Central Planning Area, Gulf of Mexico Outer Continental Shelf Region	34
10. Eastern Planning Area, Gulf of Mexico Outer Continental Shelf Region	35

1. Overview

Introduction

This is the first annual edition of the Energy Information Administration's (EIA) *Oil and Gas Field Code Master List Updates*. It was preceded by 14 annual editions of the complete, unabridged *Oil and Gas Field Code Master List*, the 1996 and future editions of which will only be available:

- on the quarterly EIA Energy InfoDisc CD-ROM
- on the EIA World-Wide Web site
<<http://www.eia.doe.gov>>
- in PK-zip compressed form on a 3.5-inch high-density floppy diskette available upon request.

Reflecting data collected through October of the prior year, the annual *Oil and Gas Field Code Master List* provides standardized field name spellings and codes for **all** identified oil and/or gas fields in the United States, whereas *Oil and Gas Field Code Master List Updates* provides only the annual changes made to the *Oil and Gas Field Code Master List* (additions of new fields and alterations to the records of previously listed fields, including deletions). Thus, *Oil and Gas Field Code Master List Updates 1996* is effectively the first supplement to the *Oil and Gas Field Code Master List 1995* publication, which its recipients were requested to retain.

The most recent master field name spellings and codes are to be used by respondents when filing the following Department of Energy (DOE) forms:

- Form EIA-23, "Annual Survey of Domestic Oil and Gas Reserves", filed by oil and gas well operators (field codes are required from larger operators only)
- Form EIA-191, "Underground Gas Storage Report", filed by natural gas producers and distributors who operate underground natural gas storage facilities.

Other Federal and State government agencies, industry, and academia use the EIA *Oil and Gas Field Code Master List* as the standard for field identification.

In order for the *Oil and Gas Field Code Master List* (FCML) to be useful, it must be accurate and remain current. To accomplish this, EIA constantly reviews and revises this list. EIA welcomes all comments, corrections, and additions to the FCML. All such information should be given to the EIA Field Code Coordinator at 202-586-4787.

EIA gratefully acknowledges the assistance provided by numerous State organizations and trade associations in verifying the existence of fields and their official nomenclature.

Summary Statistics

There are 57,929 field records in this year's FCML, 529 more than in last year. The FCML includes:

- Field records for each State and county in which a field resides
- Field records for each offshore area block in the Gulf of Mexico in which a field resides
- Field records for each alias field name (see definition of alias below)
- Fields crossing State boundaries that may be assigned different names by the respective State naming authorities.

Taking into consideration the double-counting of fields under such circumstances, EIA identifies 46,607 distinct fields in the United States as of October 1996. This count includes fields that no longer produce oil or gas and 467 fields used at some time in whole or in part for oil or gas storage. The following is a summary count by hydrocarbon type of distinct fields in the United States:

Field Type	Number
U.S. oil and gas distinct fields	46,607
Fields with oil	34,548
Fields with gas	31,823
Fields with associated-dissolved gas	15,917
Fields with nonassociated gas	21,252
Fields with unspecified hydrocarbon	142

Note: The sum of these fields is greater than the total number of distinct fields, since many fields have more than one type of hydrocarbon present.

EIA has assigned a unique six-digit field name code to each *field name*. The field names recognized by the State naming authorities or by tradition total 52,546. Of these, 45,607 are currently considered official, while 6,939 have been declared unofficial by the State naming authorities and are designated as *alias names* by EIA.

This report also contains an Invalid Field Record List of 10 records that have been removed from the FCML since last

year's report. These records were found to be either technically incorrect or to represent field names which were never recognized by State naming authorities.

Publication Organization and Content

Chapter 2 provides details on the methodology used to assign field codes and the procedures followed to standardize field names. Chapter 3, the User's Guide, and the Glossary provides the definitions and explanations needed to utilize this publication. The FCML updates follow the Glossary. They are organized by State, with fields sorted alphabetically by name within each State. Fields in the Federal Offshore Outer Continental Shelf are listed separately at the end after Wyoming. Each field name entry contains the field code, field name, geographical information, and other related information. The updates are followed by the Invalid Field Record List.

History

The EIA FCML evolved from the Federal Power Commission's Field/Plant Code List (FPC Field Code List). The FPC Field Code List, originally developed over 25 years ago, had a unique code assigned to each field on the list. That is, two fields having identical names in separate States had separate six-digit field codes. However, some respondents to Form FPC 15, "Interstate Pipeline's Annual Report of Gas Supply", began using the first code given in the list for a field name, regardless of the State involved. With few respondents applying computerized edits to their submissions at that time, miscoding of fields became a problem. The solution applied was to recode the fields on the list so that any fields with identical names were assigned the same six-digit code (a field name code) but were differentiated by the State and county codes incorporated in the full field code. For example, 145385KS101 is the field code for the CLARK field in Kansas and 145385TX285 is the field code for the CLARK field in Texas, as 145385 is the *field name code* for CLARK.

The FPC Field Code List, originally designed to handle data relating to interstate gas fields, was expanded over the years, as resources permitted, to include the names of oil fields and intrastate gas fields. Six-digit codes were assigned in ascending order to alphabetically sorted field names. Codes from the FPC Field Code List were used in filing Form FPC 15 and Form FPC 8, "Underground Gas Storage Report".

After the establishment of DOE in 1977, the requirement to gather annual, verifiable oil and gas reserves estimates led to

the development of Form EIA-23, "Annual Survey of Domestic Oil and Gas Reserves". Form EIA-23 collects certain data by field, and the use of the FPC Field Code List aided the reporting and processing of these data. As use of the FCML expanded by way of the Form EIA-23 program, additional work to verify and update the code list was necessary to keep the list current. In 1981, the correlation between the code number sequence and the alphabetical field name sequence was dropped. This change precluded the necessity of periodically reassigning field codes in order to maintain the list in parallel numeric and alphabetic order.

A procedure was developed for the *Oil and Gas Field Code Master List 1988* publication which determined the actual count of distinct oil and gas fields in the United States. A part of this procedure was to aggregate the separate county portions of existing fields into their recognized geological entirety, even if the field crossed a State boundary. This procedure is time-consuming and entails manual intervention, so it is done on a yearly cycle.

Definition of a Field

A field is defined as "an area consisting of a single reservoir or multiple reservoirs all grouped on, or related to, the same individual geological structural feature and/or stratigraphic condition. There may be two or more reservoirs in a field which are separated vertically by intervening impervious strata, or laterally by local geologic barriers, or by both."

This definition is not used by all States in their designation of fields; consequently, areas classified as individual fields by some States may be found combined in the FCML.

Coding of Fields

As noted above, the six-digit field name code is common to a specific field name, regardless of whether one or several fields exist with that particular name. In order to uniquely identify a particular field, the field name code must be coupled with the corresponding State abbreviation and county code.

Most codes on the FCML remain in a numerically ascending order by alphabetized field name. However, field names added since 1981 have been assigned the first available (numerically lowest) unused code. Fields located in the Federal Offshore area and large State offshore blocks of the Gulf of Mexico will continue to be represented by codes above 800000, according to their area, subarea, and block number.

Records that appear on the list with field name codes in light italics are alias records. The correct field name and field name code appear as part of the alias field name record after the label "Alias For:". Alias field names are not currently recognized by State naming authorities. Alias field names and their codes may be used in filing Form EIA-191, but may **not** be used on Form EIA-23.

Records that were on the FCML last year but which were subsequently found to be invalid are entered on a separate Invalid Field Record List. These records were incorrectly placed on the FCML or when complete information was not available. Field names and codes on the Invalid Field Record List should not be used in DOE filings with the indicated State and county. Note, however, that the identified field name and field name code may still be valid for a different State/county combination.

General Field Naming Conventions

Field name spellings in the FCML reflect a number of conventions and conditions. In most instances, the up to 26-character name reflects the conventions imposed by the data block length in the DOE forms and by the State naming authority, usually the oil and gas regulatory agency. Field identification for a well, lease, block, unit, or section is the responsibility of the State naming authority. A listing of these agencies appears in Table 1. In the absence of a State authority, field names which have come into general acceptance in an area may be listed. In the Appalachian Region, field area names are often used. Detailed information is provided in Chapter 2, Methodology for Field Code Assignments, concerning the field naming conventions followed.

Table 1. List of Authorities on Oil and Gas Field Nomenclature

State	Naming Authority	State	Naming Authority
Alabama	State Oil and Gas Board of Alabama	Nebraska	Nebraska Oil and Gas Conservation Commission
Alaska	Alaska Oil and Gas Conservation Commission	Nevada	Nevada Department of Conservation and Natural Resources, Division of Mineral Resources
Arizona	Arizona Oil and Gas Conservation Commission	New Mexico	Energy Mineral Department, New Mexico Oil Conservation Division
Arkansas	Arkansas Oil and Gas Commission	New York	New York Department of Environmental Conservation, Division of Mineral Resources
California	California Department of Conservation, Division of Oil and Gas	North Dakota	North Dakota Geological Survey
Colorado	Colorado Department of Natural Resources, Oil and Gas Conservation Commission	Ohio	Ohio Department of Natural Resources, Division of Oil and Gas
Florida	Florida Department of Natural Resources, Bureau of Geology, Oil and Gas Administration	Oklahoma	Mid-Continent Oil and Gas Association, Oklahoma Nomenclature Committee
Illinois	Illinois Department of Energy and Natural Resources, State Geological Survey	Oregon	Oregon Department of Geology and Minerals Industries Division of Oil and Gas Geology
Indiana	Indiana Department of Natural Resources, Geological Survey, Petroleum Section	Pennsylvania	Pennsylvania Department of Environmental Resources, Bureau of Topographic and Geologic Survey
Iowa	Iowa Geologic Survey	South Dakota	Department of Environment and Natural Resources
Kansas	Kansas Geological Survey	Tennessee	Tennessee Department of Conservation, Division of Geology
Kentucky	Kentucky Geological Survey	Texas	Railroad Commission of Texas, Oil & Gas Division
Louisiana	Louisiana Department of Natural Resources, Office of Conservation	Utah	Utah Field Names Advisory Committee, Oil, Gas and Mining Division
Maryland	Maryland Geological Survey	Virginia	Department of Mines, Minerals and Energy, Oil and Gas Division
Michigan	Michigan Department of Natural Resources, Geological Survey Division	Washington	Oil and Gas Conservation Committee
Minnesota	Minnesota Department of Natural Resources, Minnesota Geological Survey, Division of Waters	West Virginia	West Virginia Geological and Economic Survey
Mississippi	Mississippi State Oil and Gas Board	Wyoming	Field Name Advisory Committee, Wyoming Oil and Gas Conservation Commission
Missouri	Missouri Department of Natural Resources, Division of Geology and Land Survey	Federal Offshore	U.S. Department of Interior, Minerals Management Service
Montana	Montana Department of Natural Resources and Conservation, Oil and Gas Conservation Division		

Source: Energy Information Administration, Office of Oil and Gas.

2. Methodology for Field Code Assignments

Purpose

The purpose of the Field Code Master List (FCML) effort is to provide the Energy Information Administration (EIA) and others with standardized field name spellings and associated unique codes for all crude oil and natural gas fields throughout the United States. The codes are compiled on the computerized Field Code Master File (FCMF), which is updated on a quarterly cycle.

General System Overview

Figure 1 presents a flow chart of the activities necessary to process new field information. All new field information received by EIA goes through this cycle, which is designed to process field information received from respondents filing Forms EIA-23 and EIA-191, as well as from other sources such as State publications.

The system incorporates both a Field Code Working File (FCWF) and the FCMF. The FCWF contains all new, or unverified, field information. It exists for two reasons:

- The large size of the FCMF makes it relatively difficult to manipulate.
- It is useful in tracking the progress made toward verifying in process fields, while at the same time assuring that redundant activities are not taking place.

The FCWF is updated as information about the field is obtained. Periodically all fully resolved records are extracted from the FCWF and used to update the FCMF. Once the FCMF update is completed, the resolved records are deleted from the FCWF.

Field Information Research

Geologists and petroleum engineers are responsible for supervising research and final resolution of field information. Listings of the FCWF are produced by region for review. There are several possible explanations why field information under review is not already contained on the FCMF. That information could reflect the following:

- A relatively recent field discovery
- A recently discovered extension of an old field into a new county or State
- An alias used for the official name

- An error exists in the reported information (*e.g.*, a reporting error on the Form EIA-23).

The official recognition of a new field discovery by a State field naming authority is a prerequisite for the assignment of an official EIA field code. Table 1 on page 4 lists these naming authorities. Information regarding State recognition is obtained through official State publications and computer tapes, or through other contact with the State agencies.

If the field name in question has not been officially recognized, several sources of information exist for further investigation into the third and fourth possibilities listed above. These include:

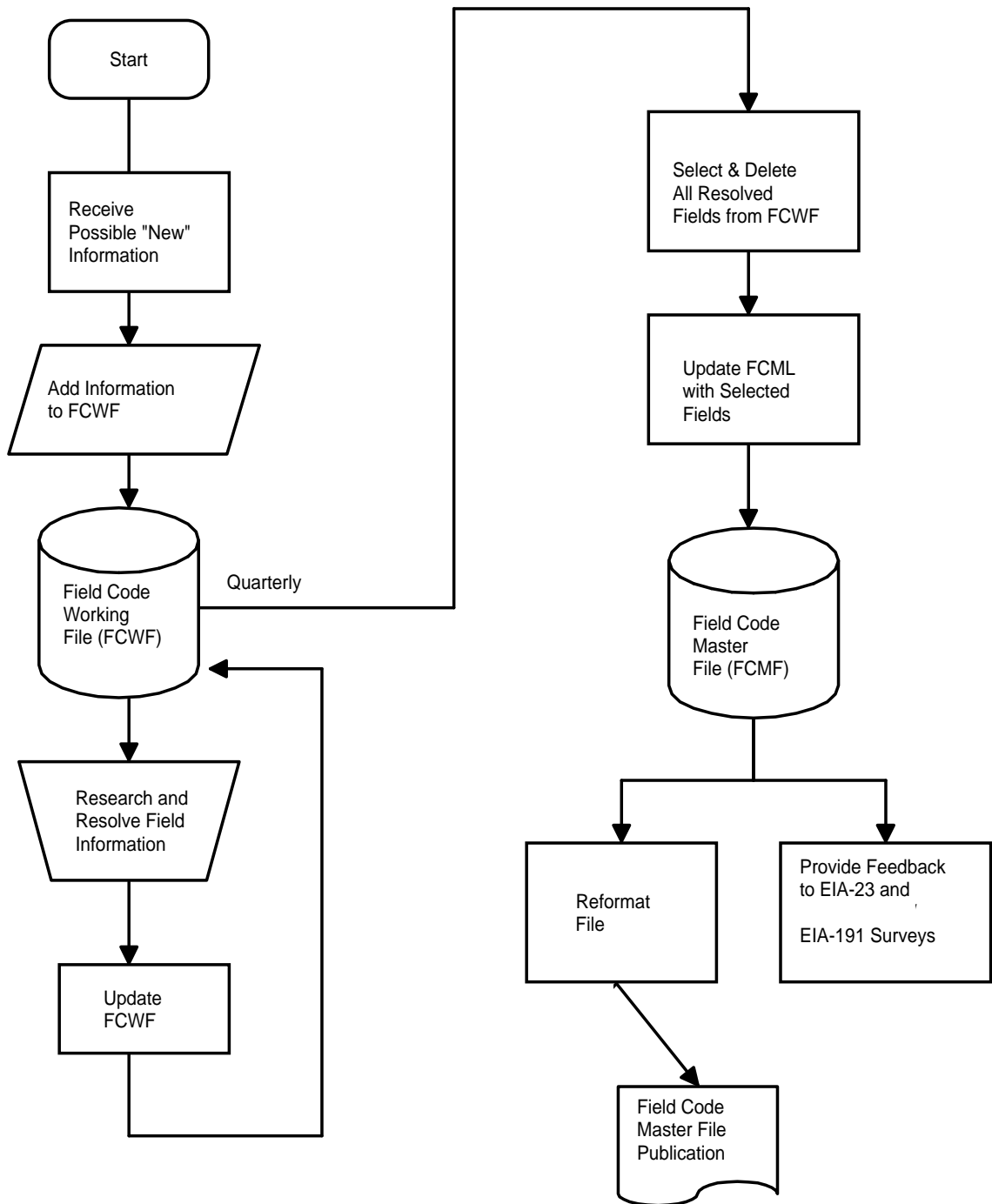
- Analysis of State data files (the Texas and New Mexico files, for example, contain detailed information for each field and operator)
- Review of oil and gas industry publications
- Telephone contact with the source of the information (*e.g.*, a respondent to Form EIA-191 or Form EIA-23).

State Source Review Procedures

State sources provide most of the field names. As State publications are released they are routinely reviewed and the information regarding new fields is compared to the information on the FCMF. If the FCMF does not contain the new field information, the FCWF is updated to reflect it. Prior to updating the FCWF, entries on it are reviewed in order to identify any research which might be in progress on the same field. Information added to the FCWF from State publications is added as resolved information, ready to be entered on the FCMF, since the States are the final authority for this information.

The quality and quantity of information available through the State publications varies. Some States publish new field information relatively frequently (*e.g.*, monthly) in a format that is easily reviewed for incorporation into the FCMF. Routine processing of State sources begins with these publications. Additional State publications, such as State geological papers, are also included in these routine reviews. Periodically, all FCMF records for a State are compared to the most recent State publication.

Figure 1. Field Code Processing Flow Chart



Source: Energy Information Administration, Office of Oil and Gas

Some States do not publish field information, or the field information is not carried in the latest publication but in a previous one. In an overall review of the FCMF, when a particular field is not found in any available State publication, the source **NISP** (not in State publication) is initially coded into the source section of the FCMF. When an earlier State source reports “No Production”, “No Reports”, or some similar remark for one or more years, and does not show the field in subsequent sources, the field is still considered to be official, whether it is presently producing or not. When a field is found in an older State source in some sort of combination with, or in subordination to, another field name, the State is contacted and asked to clarify the status of the field. This research resolves most of the **NISP** records, allowing them to be finally categorized as a master field record with a State naming authority source, as an alias field record, or as an invalid field record. Certain field records, representing field names assigned by non-State naming authority publications which were coded prior to initiation of production in a field which subsequently was abandoned without any recorded production, have been classified as invalid.

Assigning New Field Code Numbers

A sequential listing of available field code numbers starting with 000101 is used by the Field Code Coordinator when new field codes are assigned. The first available code (numerically lowest) is used for a new field, regardless of name spelling, with the following exception: codes 800000-999998 are excluded from sequential code assignments, as they are reserved for offshore Gulf of Mexico fields.

Field Alias Procedures

A field alias is an unofficial name for an officially recognized field. Each name designated as an alias is cross-referenced to the official name. An official name is the current, State-sanctioned name. An unofficial name is one which no longer is, or never was, a State-sanctioned name.

A field alias may reflect the following possibilities:

- An alternate name for the official name
- A field that has been renamed to something else
- A field that has been combined, consolidated, or merged into another field
- A field that has split into two or more new fields and the old name is no longer used.

For the combined or renamed types of aliases, both the official and alias names are on the FCMF.

For alternate name aliases, the official name must be on the FCMF in all cases. The alias name will be on the FCMF in the following cases:

- A representative from the State agency is aware of the alias name as an alternative for the official name
- The alias name was submitted by a Form *FERC 15 “Interstate Pipeline’s Annual Report of Gas Supply”* respondent (formerly collected by the Federal Energy Regulatory Commission)
- Two or more operators report the same alias
- The alias is already on the FCMF for some reason.

An alternate name alias which does not meet one of these four criteria normally would not be added to the FCMF.

Field Alias Records That Have Several Official Names

Certain alias field records result from the splitting of a field into two or more fields, with none of the resulting fields using the original field name. For example, Field A was split into three fields: Field B, Field C, and Field D. Fields B, C, and D would be listed as field records on the FCML. Field A would be listed as a field alias record referencing Field B, **but not** Fields C and D and would show **SPLIT** as its reason for alias. Because of space limitations, the appropriate State naming authority or the Field Code Coordinator must be contacted to determine names of the other fields created out of Field A when it was split, as well as how many others were created.

Fields With More Than One Name Change

The current official name may be the result of several name changes. For instance, in Oklahoma, RINGWOOD NE was combined with RINGWOOD NORTH in 1965, which was subsequently combined into RINGWOOD in 1966. The listing for RINGWOOD NE would show the correct field name as RINGWOOD. If multiple names were involved, the alias field name record would list only the current (correct) field name. (For example, in Oklahoma, HENNESSEY SE is an alias for HENNESSEY EAST which has since been changed first to DOVER-HENNESSEY and finally to SOONER TREND. The correct name for the alias HENNESSEY SE, HENNESSEY EAST and DOVER-HENNESSEY is SOONER TREND.) Information on the chain of successive field names may be obtained from the appropriate State naming authority or the Field Code Coordinator.

Offshore Code Assignments

Federal Outer Continental Shelf fields in areas other than the Gulf of Mexico are given names in the same manner as onshore fields, and are coded with the next sequential code.

Offshore fields on the Federal Gulf of Mexico Outer Continental Shelf receive a field name code that is determined by the lease block (or blocks) for which they are named by the Minerals Management Service (MMS). The last three digits of the code are the block number. For instance, East Cameron (offshore area prefix code 824) Block 071, receives the field code of 824071. If several blocks are included in one field, the field code reflects the number of the block for which the field is named. The other blocks included in the field appear as aliases to the official name. When MMS has named two fields with the same basic block number i.e., Ship Shoal Blk 113 field and Ship Shoal Blk 113A field, for the second designated field the basic block number is combined with the prefix code of an adjacent area within which this block number would not occur.

There are cases where a particular OCS lease block contains portions of two or more fields. If one of the fields is named for the block concerned, there will be an entry in the REMARKS section indicating PBI, for "Part of Block In", followed by the field code of the other included field. If the block concerned is only an alias to all the fields involved, it will be designated in MULTI to highlight that more than one field is included within the lease block.

Fields in large offshore State blocks in the Gulf of Mexico are assigned codes in the manner of offshore Federal fields. Special prefixes, generally unassigned prefixes for area surveys, are used for the small State block fields. A special prefix has been set aside for High Island-State. This prefix is used only with the small block fields. For State blocks that exceed 999, an unused three-digit prefix ending in 1 is used, such as SOUTH PADRE IS BLK 1068 with code 951068.

Field Naming Conventions

Use of Compass Directions in Field Names

As a general rule, a compass direction used as part of a field name is placed at the end of the name. For example, the field named West Davenport by a State source bears the name DAVENPORT WEST on the FCMF. A field named after a known landmark, such as the town of East Davenport for example, bears the name EAST DAVENPORT on the FCMF.

If the field DAVENPORT WEST is then combined with other wells or fields and the word District, or some similar word, is added to the name, the name will appear on the FCMF as DAVENPORT WEST DISTRICT. This enables users to distinguish between two fields, one named as a result of forming a district with the DAVENPORT WEST field as its nucleus, e.g., DAVENPORT WEST DISTRICT, and the other which is a new district to the west of DAVENPORT DISTRICT, e.g., DAVENPORT DISTRICT WEST.

Abbreviations are not used in connection with onshore field names except for noncardinal compass points, such as NW for Northwest or SE for Southeast, and for names of combined fields in certain States which use all the individual names of the former fields to form the new field name. Cardinal compass points are spelled out in onshore field names.

Offshore field names in the Gulf of Mexico usually consist of an offshore area name and block number specified by the U.S. MMS. Example: EAST CAMERON BLOCK 299. The FCML has retained the subarea identifiers such as EAST CAMERON *SOUTH ADDITION* BLOCK 299 field which yields a 37-character field name. Such lengthy offshore area names must be abbreviated to fit within the 26 characters available. When this is necessary, the following standard abbreviations are used:

North N	North Addition NA
South S	South Addition SA
East E	East Addition EA
West W	West Addition WA
Block BLK	South Extension . . SX
Island . . . IS	East Extension EX

For example, High Island East Addition South Extension Block A376 is abbreviated HIGH IS EA SX BLK A376.

Special Naming Conventions

Some States regard reservoirs as fields and keep their records on that basis (e.g., Texas and New Mexico). The FCML does not follow the State conventions in these instances. For example, in Texas, PARKER (PENNSYLVANIAN) and PARKER (WOLFCAMP) are considered to be separate fields by the State. PARKER is actually the name of the field and PENNSYLVANIAN and WOLFCAMP are the names of reservoirs in the field. The Texas Railroad Commission requires that the reservoir name appear in parentheses after the field name in its publications. In the FCML you will only find PARKER listed as the field.

The MMS quarterly publication *OCS Operations Field Names Master List, Gulf of Mexico OCS Region* (FNML) is the primary source for the Federal offshore Fields in the Gulf

of Mexico. This publication, and the MMS computer file on which it is based, does not use the subarea identifiers such as the *SOUTH ADDITION*, although maps of the region still carry these subareas. That is, where the MMS FNML carries the name WEST CAMERON BLOCK 617, most maps and the FCML call the field WEST CAMERON SA BLK 617 with SA the abbreviation for SOUTH ADDITION.

Reused Field Names

Some States occasionally reuse field names for areas other than the original field location. This situation is handled on the FCMF by indicating (OLD) and (NEW) after the field name, with each being assigned a different field code. This procedure facilitates computerized usage of the database.

Invalid Field Record Procedures

Field records are removed from the FCML when they are found to be incorrect for one of the following reasons:

- The field name as it appears was never approved by the relevant naming authority; *i.e.*, it could have been a misspelled field name or the name of a producing unit, well, lease or offshore platform.
- County or State location data are incorrect.
- Two separate field codes were assigned to the same field name.

When research on a **NISP** field record determines that one of those reasons applies to a field or field alias record, the record type is changed to **INVALID**. Invalid field records appear in the Invalid Field Record List section of the FCML publication for the year in which they have been designated **INVALID**. They will not appear in subsequent years. A cumulative list of **INVALID** records may be obtained by contacting the Field Code Coordinator.

3. User's Guide

Field Code Master List Updates

As in the *Oil and Gas Field Code Master List (FCML)*, the fields in *Oil and Gas Field Code Master List Updates* are sorted alphabetically by State and alphabetically by field name within a State. Fields in the Federal Offshore are listed separately. Fields that occur in multiple States are listed in each and are further sublisted by county.

Referring to the layout shown in Figure 2, each field record is one line long except for records with a "REMARK", which appears on a second line. Each alias field record is two lines long. A brief description of each data item follows.

Master Field Record

Item 1, FIELD CODE. The six-digit field name code assigned to this field name.

Item 2, FIELD NAME. The field name (26-character limit).

Item 3, STATE POSTAL ABBREVIATION AND STATE SUBDIVISION CODE. The four-character code indicating the State and State subdivision. The first two positions are the State postal abbreviation. The last two positions are the two-digit subdivision code used only in Alaska, California, Louisiana, New Mexico and Texas, and in offshore areas to differentiate between State and Federal waters. Table 2 on page 13 is a listing of these codes. Figures 3 through 7, at the end of the Users' Guide, are the subdivision maps.

Item 4, COUNTY CODE. The three-character code for the county or parish. For all States except Alaska this is the Federal Information Processing Standards (FIPS) county code, as presented in FIPS publication 6-3 dated December 15, 1979 and its amendments. As Alaska has no counties, the FCML uses the U.S. Geological Survey 1° x 3° quadrangles for Alaska and the three-digit pseudo-county codes assigned to them by the American Petroleum Institute. Codes used for fields located in State or Federal offshore areas are: Offshore-State, 990; Offshore-Federal, 995; Offshore-General, 999.

Item 5, COUNTY NAME. The county or parish name (23-character limit) as defined in FIPS publication 6-3 for all State onshore areas except Alaska. For Alaska, the name associated with the USGS 1° x 3° quadrangle is used. Table 3 on page 14 is a listing of the pseudo-county codes and names for Alaska. If the field is in an offshore area, see the list in Item 4 above.

Item 6, FIELD DISCOVERY YEAR. The four-digit year of first discovery of oil or gas in this field, if it is known. In the case of combined fields, this is the earliest date among the formerly separate fields.

Item 7, FIELD TYPE. The three-character block giving the type of hydrocarbon found in the field using the symbols defined below.

Symbol	Meaning of Symbol
ONA	Oil, nonassociated gas, and associated-dissolved gas are present.
ON	Oil and nonassociated gas present; associated-dissolved gas absent.
N	Nonassociated gas present; oil and associated-dissolved gas absent.
O	Oil present; nonassociated gas and associated-dissolved gas absent.
OA	Oil and associated-dissolved gas present; nonassociated gas absent.
Blank	Type of hydrocarbon is unknown.

Item 8, REMARKS. This is a 23-character entry specifying an attribute of the field. Common remarks are:

- AKA Field is also called by another name, i.e., Also Known As. The year (YY) it became known as this field also may shown. (AKA JOHN SMITH 71)
- COMB Field combined with another field. The year (YY) also may be shown after the combined field code. (COMB 123456 78)
- LBI Although listed in State offshore, this field and block are located Landward of the Barrier Islands. (see BRETON SOUND BLK 18)
- PBI Used when referring to offshore blocks. Part of Block In will reference another offshore field code (PBI 921300) in which a portion of this block is included (i.e., portions of this block occur in two different fields).
- STOR Field used to store natural gas or it is a DOE strategic oil reserve. The storage field will be gas unless the REMARKS section includes an entry such as DOE OIL. The year (YY) it was designated a storage field is shown in parentheses following the STOR label (STOR (69) AQF). AQF is used in conjunction with STOR to signify aquifer gas

Table 2. State Abbreviations and Geographic Subdivision Codes

State Name and Geographic Subdivisions	State Abbreviation	Subdivision Code	State Name and Geographic Subdivisions	State Abbreviation	Subdivision Code
Alabama-Onshore	AL	—	Montana	MT	—
Alabama-State Offshore	AL	05	Nebraska	NE	—
Alaska-North Onshore and Offshore	AK	50	Nevada	NV	—
Alaska-South Onshore	AK	10	New Hampshire	NH	—
Alaska-South State Offshore	AK	05	New Jersey	NJ	—
Alaska-South Federal Offshore	AK	00	New Mexico-East	NM	10
Arizona	AZ	—	New Mexico-West	NM	50
Arkansas	AR	—	New York	NY	—
California-Coastal Region Onshore	CA	50	North Carolina	NC	—
California-Los Angeles Basin Onshore	CA	90	North Dakota	ND	—
California-San Joaquin Basin Onshore	CA	10	Ohio	OH	—
California-State Offshore	CA	05	Oklahoma	OK	—
California-Federal Offshore	CA	00	Oregon	OR	—
Colorado	CO	—	Pennsylvania	PA	—
Connecticut	CT	—	Rhode Island	RI	—
Delaware	DE	—	South Carolina	SC	—
District of Columbia	DC	—	South Dakota	SD	—
Florida-Onshore	FL	—	Tennessee	TN	—
Florida-State Offshore	FL	05	Texas RRC District 1	TX	10
Georgia	GA	—	Texas RRC District 2 Onshore	TX	20
Hawaii	HI	—	Texas RRC District 3 Onshore	TX	30
Idaho	ID	—	Texas RRC District 4 Onshore	TX	40
Illinois	IL	—	Texas RRC District 5	TX	50
Indiana	IN	—	Texas RRC District 6	TX	60
Iowa	IA	—	Texas RRC District 7B	TX	70
Kansas	KS	—	Texas RRC District 7C	TX	75
Kentucky	KY	—	Texas RRC District 8	TX	80
Louisiana-North	LA	50	Texas RRC District 8A	TX	85
Louisiana-South Onshore	LA	10	Texas RRC District 9	TX	90
Louisiana-South State Offshore	LA	05	Texas RRC District 10	TX	95
Louisiana-South Federal Offshore	LA	00	Texas-State Offshore	TX	05
Maine	ME	—	Texas-Federal Offshore	TX	00
Maryland	MD	—	Utah	UT	—
Massachusetts	MA	—	Vermont	VT	—
Michigan	MI	—	Virginia	VA	—
Minnesota	MN	—	Washington	WA	—
Mississippi-Onshore	MS	—	West Virginia	WV	—
Mississippi-State Offshore	MS	05	Wisconsin	WI	—
Missouri	MO	—	Wyoming	WY	—
			Atlantic Coast-Federal Offshore	AC	00
			Other Gulf-Federal Offshore	OG	00

— = Not applicable.

Sources: National Bureau of Standards, U.S. Department of Commerce, FIPS PUB 6-3, *Counties and County Equivalents of the States of the United States and the District of Columbia*. Energy Information Administration, Office of Oil and Gas.

Table 3. U.S. Geologic Survey Alaska Quadrangles and Associated Codes

Quadrangle	Quad Code	Quadrangle	Quad Code	Quadrangle	Quad Code	Quadrangle	Quad Code
Adak	001	Dillingham	077	Marshall	157	Seward	233
Afognak	003	Dixon Entrance	079	McCarthy	159	Shishmaref	235
Ambler River	005	Eagle	081	McGrath	161	Shungnak	237
Amukta	007	Fairbanks	083	Meade River	163	Simeonof Island	239
Anchorage	009	False Pass	087	Medfra	165	Sitka	241
Arctic	011	Flaxman Island	089	Melozitna	167	Skagway	243
Atka	013	Fort Yukon	091	Middleton Island	169	Sleetmute	245
Atlin	015	Cold Bay	093	Misheguk Mtn	171	Solomon	247
Attu	017	Gareloi Island	095	Mt Fairweather	085	St Lawrence	253
Baird Inlet	019	Goodnews	097	Mt Hayes	173	St Matthew	249
Baird Mts	021	Gulkana	099	Mt Katmai	175	St Michael	255
Barrow	023	Hagemeister Island	101	Mt McKinley	177	Stepovak Bay	251
Barter Island	025	Harrison Bay	103	Mt Michelson	179	Sumdum	257
Beaver	027	Healy	105	Mt St Elias	181	Survey Pass	259
Beechey Point	029	Holy Cross	107	Nabesna	183	Sutwik Island	261
Bendeleben	031	Hooper Bay	109	Naknek	185	Table Mtn	263
Bering Glacier	033	Howard Pass	111	Noatak	187	Taku River	265
Bethel	035	Hughes	113	Nome	189	Talkeetna	267
Bettles	037	Icy Bay	115	Norton Bay	191	Talkeetna Mts	269
Big Delta	039	Iditarod	117	Nulato	193	Tanacross	271
Black	041	Ikpikpuk River	119	Nunivak Island	195	Tanana	273
Black River	043	Iliamna	121	Nushagak Bay	197	Taylor Mts	275
Blying Sound	045	Juneau	123	Ophir	199	Teller	277
Bradfield Canal	047	Kaguyak	125	Petersburg	201	Teshekpuk	279
Bristol Bay	049	Kantishna River	127	Philip Smith Mts	203	Trinity Islands	281
Candle	051	Karluk	129	Point Hope	205	Tyonek	283
Cape Mendenhall	053	Kateel River	131	Point Lay	207	Ugashik	285
Chandler	055	Kenai	133	Port Alexander	209	Umiat	287
Chandler Lake	057	Ketchikan	135	Port Moller	211	Umnak	289
Charley River	059	Killik River	137	Pribilof Islands	213	Unalakleet	291
Chignik	061	Kiska	139	Prince Rupert	215	Unalaska	293
Christian	063	Kodiak	141	Rat Islands	217	Unimak	295
Circle	065	Kotzebue	143	Ruby	219	Utukok River	297
Cold Bay	093	Kuskokwim Bay	145	Russian Mission	221	Valdez	299
Coleen	067	Kwiguk	147	Sagavanirktok	223	Wainwright	301
Cordova	069	Lake Clark	149	Samalga Island	225	Wiseman	303
Craig	071	Lime Hills	151	Seguam	227	Yakutat	305
De Long Mts	073	Livengood	153	Selawik	229		
Demarcation Point	075	Lookout Ridge	155	Seldovia	231		

Note: The State of Alaska does not have counties that can be used for field identification. Areas identified by U. S. Geological Survey quadrangles have been assigned codes by the American Petroleum Institute for use as pseudo-counties. These three-digit codes are analogous to the usual "county code".

Source: The API Well Number and Standard State and County Numeric Codes Including Offshore Waters. API Bulletin D12A, January 1979. American Petroleum Institute, Washington, DC.

storage field. ABD signifies abandonment of storage operations.

UNIT An area made up of a group of leases (either State or Federal). It may or may not include a field and it may be composed of one or more fields.

Alias Field Record

Item 1, ALIAS FIELD CODE. The six-digit field name code assigned to this alias field name, printed in italics.

Item 2, ALIAS FIELD NAME. The alias field name (26-character limit), printed in italics.

Item 3, STATE POSTAL ABBREVIATION and STATE SUBDIVISION CODE. Same as Master Field Record, *Item 3.*

Item 4, COUNTY CODE. Same as Master Field Record, *Item 4.*

Item 5, COUNTY NAME. Same as Master Field Record, *Item 5.*

Item 6, CROSS-REFERENCE. This is the identification of the master field code and field name which should be used in place of the alias name listed in Item 2 of this record. This item consists of the label "Alias For:" followed by the correct six-digit field name code and the correct (*i.e.*, current) field name.

Item 7, ALIAS TYPE. The code indicating type of alias (five-character limit). It is present only for alias fields. The types of alias codes are:

ALTER	This field name is an alternative for the official field name. The correct name and code follow "Alias For:".
BLOCK	This offshore field extends into more than one offshore block. This offshore block name is not the one for which the field is named. The block for which the field is named follows "Alias For:".
COMB	This field has been combined with another field which is listed after "Alias For:".
MULTI	This offshore lease block has portions of two or more fields in it. In the FCML, the record is listed once for each field to which it is aliased so that appropriate cross reference is made.
RENAM	This field has been renamed. The new name follows "Alias For:".
SPLIT	This field has been split into two or more fields, none of which retains this name. One of the new

fields is listed after "Alias For:". Contact the Field Code Coordinator for the additional fields and information relating to this alias field.

Coalbed Methane Field List

A dramatic rise in coalbed methane's share of natural gas production has heightened interest in those fields with coalbed methane potential. On page 16 in Table 4, Coalbed Methane Fields, the field name, field code, county code and name, and state are given for those fields currently productive or with drilling activity.

Storage Fields

Storage fields have been developed in many States. Some were developed in existing, official oil and/or gas fields. All storage fields are listed in Table 5. In certain States, the storage portion of a field or pool has been given a different name. In this case, the storage field name is carried on the FCML as an alias to the official field name. The storage field names which are aliases are listed in both Table 5 and the FCML in *italics*. These alias field names and codes in *italics* may only be used in filing Form EIA-191, "Underground Gas Storage Report".

Fields Located in Multiple Jurisdictions

Table 6, Fields Located in Multiple Jurisdictions, indicates those oil and/or gas fields which cross State boundaries. In developing the summary statistics on page 1, a field is only counted once, no matter how many counties or States it is in.

Outer Continental Shelf Planning Areas

Gulf of Mexico Outer Continental Shelf statistics published by the Minerals Management Service (MMS) follow the boundary lines of the Western, Central, and Eastern MMS Planning Areas, shown respectively in Figures 8, 9, and 10. In order that reports developed from the *U.S. Crude Oil, Natural Gas, and Natural Gas Liquids Reserves* track the reporting by MMS, fields currently found in the Garden Banks leasing area (GB), and those which may be found in GB or in the Keathley Canyon leasing area, are listed in the FCML as Texas Federal Offshore rather than Louisiana-South Federal Offshore.

Table 4. Coalbed Methane Fields

State and Field Name	Field Code	County Code	County Name	State and Field Name	Field Code	County Code	County Name
ALABAMA				Ignacio-Blanco	343874	007	Archuleta
Big Sandy Creek Coal Degas	013337	125	Tuscaloosa			067	La Plata
Blue Creek Coal Degas	012124	125	Tuscaloosa	Parachute	009661	045	Garfield
Boone Creek Coal Degas	013341	125	Tuscaloosa	Pinyon Ridge	014271	103	Rio Blanco
Brookwood Coal Degas	000311	073	Jefferson	Red Mesa	591452	067	La Plata
		125	Tuscaloosa	Rulison	618549	045	Garfield
Cedar Cove Coal Degas	008416	125	Tuscaloosa	Shale Ridge South	013929	077	Mesa
Deerlick Creek Coal Degas	008478	125	Tuscaloosa	Skinner Ridge	013633	045	Garfield
Fairview	233940	075	Lamar	Three Bridges	012076	055	Huerfano
Gurnee Coal Degas	013330	007	Bibb	West Side Canal	760277	081	Moffat
		117	Shelby	White River	764757	103	Rio Blanco
Holt Coal Degas	003623	125	Tuscaloosa	ILLINOIS			
Little Buck Creek Degas	014254	063	Greene	Eldorado Consol	218392	165	Saline
		125	Tuscaloosa	INDIANA			
Little Sandy Creek Degas	013172	125	Tuscaloosa	Bicknell	060509	083	Knox
Moundville Coal Degas	013503	063	Greene	Sandford	630765	167	Vigo
		065	Hale	Sullivan Consol	687396	153	Sullivan
		125	Tuscaloosa	KANSAS			
Oak Grove Coal Degas	003662	073	Jefferson	Brewster	091247	125	Montgomery
		125	Tuscaloosa	Fairmount Townsite	010916	103	Leavenworth
Peterson Coal Degas	008595	125	Tuscaloosa	Frasier	255736	019	Chautauqua
Pleasant Grove Coal Degas	003670	073	Jefferson	Fredonia	256542	205	Wilson
Robinsons Bend Coal Degas	013516	125	Tuscaloosa	Hale-Inge	299507	019	Chautauqua
Scottsville Coal Degas	013800	007	Bibb			049	Elk
Taylor Creek Coal Degas	014136	063	Greene	Jefferson-Sycamore	356998	125	Montgomery
		125	Tuscaloosa	Mound City	488254	107	Linn
White Oak Coal Degas	013106	073	Jefferson	Neodesha	502355	125	Montgomery
		125	Tuscaloosa			205	Wilson
		127	Walker	Peru-Sedan	551823	019	Chautauqua
Wolf Creek Coal Degas	013446	125	Tuscaloosa	Sycamore Valley	006462	125	Montgomery
COLORADO				Sycamore Valley East	008963	125	Montgomery
Apache Canyon	013811	071	Las Animas	Tyro	724826	125	Montgomery
Bronco Flats	000140	077	Mesa	Valeda	732170	099	Labette
Buzzard Creek	108313	077	Mesa	Wayside-Havana	753309	019	Chautauqua
Coal Gulch	149989	077	Mesa			125	Montgomery
Craig	168047	081	Moffat	KENTUCKY			
Divide Creek	193533	045	Garfield	Sebree Consol	641910	233	Webster
		077	Mesa	NEW MEXICO			
Gasaway	267355	045	Garfield	Aztec	032800	045	San Juan
Grand Valley	284772	045	Garfield	Aztec North	032831	045	San Juan
Hunters Canyon	339888	077	Mesa				

Table 4. Coalbed Methane Fields (Continued)

State and Field Name	Field Code	County Code	County Name	State and Field Name	Field Code	County Code	County Name
Basin	042233	039	Rio Arriba	UTAH			
		043	Sandoval	Castlegate	014836	007	Carbon
		045	San Juan	Drunkards Wash	014840	007	Carbon
Bisti	066864	045	San Juan	VIRGINIA			
Blanco	070724	045	San Juan	Glick	277145	027	Buchanan
Blanco South	070848	039	Rio Arriba	Keen Mountain	001394	027	Buchanan
Cedar Hill	127962	045	San Juan	Nora	511254	051	Dickenson
Escrito	227948	039	Rio Arriba			167	Russell
Fulcher-Kutz	259658	045	San Juan			195	Wise
Harper Hill	306924	045	San Juan	Oakwood	518178	027	Buchanan
Jasis Canyon	355315	045	San Juan	WEST VIRGINIA			
Kutz	388974	045	San Juan	Big Run-Birchfield	063361	103	Wetzel
Lybrook	435372	045	San Juan	WYOMING			
Mt Nebo	491014	045	San Juan	Bone Pile	080017	005	Campbell
Pinon North	557796	045	San Juan	Breen	090658	005	Campbell
San Juan	003683	045	San Juan	Caballo Creek	014866	005	Campbell
WAW	002964	045	San Juan	Coalmine	014867	005	Campbell
OKLAHOMA				Dixon	193998	007	Carbon
Kinta	380610	121	Pittsburg	Hartzog Draw	308943	005	Campbell
Pine Hollow South	556791	121	Pittsburg	Kingsbury Creek	380145	005	Campbell
Quinton District	580321	121	Pittsburg	Lynde	014868	005	Campbell
Spiro SE	669865	079	Le Flore	Lynde South	014869	005	Campbell
Wilburton	767826	121	Pittsburg	Lynde West	014870	005	Campbell
PENNSYLVANIA				May Butte	014871	005	Campbell
Blairsville	070166	063	Indiana	Meadowlark	014872	005	Campbell
Gump	006205	059	Greene	Oedekoven	520069	005	Campbell
Lagonda	394515	125	Washington	Ranchhouse	014873	005	Campbell
Mayfield	455469	129	Westmoreland	Rawhide Butte	013282	005	Campbell
New Freeport	503770	059	Greene	Recluse	589685	005	Campbell
Oakford	517434	129	Westmoreland	Route 59	014874	005	Campbell
Waltersburg	007359	051	Fayette	Wolff	000853	005	Campbell
Waynesburg	007266	059	Greene				

Source: Energy Information Administration, Office of Oil and Gas.

Table 5. Storage Fields

State and Field Name	Field Code	State/ Sub	County Code	County Name	State and Field Name	Field Code	State/ Sub	County Code	County Name
ALABAMA					Pecatonica	546894	IL	201	Winnebago
Bay Gas Salt Dome Gsf #1	014887	AL	129	Washington	Pontiac	565100	IL	105	Livingston
Mcintosh	460979	AL	129	Washington	Sciota	639732	IL	109	Mcdonough
ARKANSAS					Shanghai	647599	IL	131	Mercer
Jethro	358641	AR	047	Franklin	Shanghai	647599	IL	187	Warren
Lavaca Deep	404414	AR	131	Sebastian	St Jacob	624627	IL	119	Madison
Lone Elm	424210	AR	047	Franklin	State Line	677538	IL	023	Clark
Watalula	750922	AR	047	Franklin	Tilden North	708099	IL	163	St Clair
White Oak	764509	AR	047	Franklin	Tilden North	708099	IL	189	Washington
CALIFORNIA					Troy Grove	718974	IL	099	La Salle
Aliso Canyon	010456	CA50	037	Los Angeles	Tuscola	722733	IL	019	Champaign
Honor Rancho	330773	CA50	037	Los Angeles	Tuscola	722733	IL	041	Douglas
Kirby Hill	381385	CA10	095	Solano	Waterloo	751387	IL	133	Monroe
La Goleta	391270	CA50	083	Santa Barbara	Waverly	752720	IL	137	Morgan
Los Medanos	427868	CA10	013	Contra Costa	INDIANA				
Lost Hills	428333	CA10	029	Kern	Alford	009557	IN	125	Pike
Mcdonald Island	459290	CA10	077	San Joaquin	Arney	025507	IN	119	Owen
Montebello	482643	CA90	037	Los Angeles	Dixon	193998	IN	055	Greene
Playa Del Rey	559845	CA90	037	Los Angeles	<i>Giro East</i>	<i>274025</i>	<i>IN</i>	<i>125</i>	<i>Pike</i>
Pleasant Creek	559938	CA10	113	Yolo	Glendale	276432	IN	027	Daviess
Whittier	766462	CA90	037	Los Angeles	Glendale North	276494	IN	027	Daviess
COLORADO					Greensburg	289360	IN	031	Decatur
Asbury Creek	027088	CO	077	Mesa	Howesville	335454	IN	055	Greene
Flank	243676	CO	009	Baca	Huntingburg South	340074	IN	037	Dubois
Fort Morgan	250574	CO	087	Morgan	Laconia	393595	IN	061	Harrison
Fruita	259068	CO	077	Mesa	<i>Lake-Of-The-Woods</i>	<i>397408</i>	<i>IN</i>	<i>099</i>	<i>Marshall</i>
Latigo	403515	CO	005	Arapahoe	Lawrenceburg	405406	IN	029	Dearborn
Leyden Coal Mine	412715	CO	059	Jefferson	Leesville	408220	IN	093	Lawrence
Roundup	616060	CO	087	Morgan	Lonetree	425140	IN	055	Greene
Springdale	671415	CO	075	Logan	Loogootee	426597	IN	027	Daviess
Wolf Creek	776236	CO	097	Pitkin	<i>Midway</i>	<i>472745</i>	<i>IN</i>	<i>147</i>	<i>Spencer</i>
Young	787893	CO	087	Morgan	Midway Consol	472760	IN	147	Spencer
ILLINOIS					Mineral City	476691	IN	055	Greene
Ancona	012886	IL	099	La Salle	<i>Monroe City</i>	<i>481899</i>	<i>IN</i>	<i>083</i>	<i>Knox</i>
Ancona	012886	IL	105	Livingston	Montezuma	482829	IN	165	Vermillion
Ashmore	028049	IL	023	Clark	Oaktown (New)	517999	IN	083	Knox
Ashmore	028049	IL	029	Coles	Oaktown (New)	517999	IN	153	Sullivan
Belle Gent	009683	IL	199	Williamson	Odon East	519883	IN	027	Daviess
Centralia	130225	IL	121	Marion	Oliver	523975	IN	129	Posey
Centralia East	130287	IL	121	Marion	Royal Center	617083	IN	017	Cass
Cooks Mills Consol	159258	IL	029	Coles	Royal Center	617083	IN	049	Fulton
Cooks Mills Consol	159258	IL	041	Douglas	Royal Center	617083	IN	131	Pulaski
Corinth	161552	IL	199	Williamson	Sellersburg	643615	IN	019	Clark
Crab Orchard	167830	IL	199	Williamson	Simpson Chapel	657104	IN	055	Greene
Crescent City	169535	IL	075	Iroquois	State Line	677538	IN	167	Vigo
Eden	213408	IL	157	Randolph	Switz City	693201	IN	055	Greene
Eden South	012956	IL	157	Randolph	Unionport	728448	IN	135	Randolph
Freeburg	256635	IL	163	St Clair	Unionport South	009964	IN	135	Randolph
Gillespie-Benld	272765	IL	117	Macoupin	Unionville	728572	IN	105	Monroe
Glasford	275192	IL	143	Peoria	Westpoint	761207	IN	157	Tippecanoe
Herscher	318751	IL	091	Kankakee	Wilfred	768942	IN	153	Sullivan
Herscher NW	318782	IL	091	Kankakee	Wolcott	776143	IN	181	White
Hillsboro	323394	IL	135	Montgomery	Wolcott North	009982	IN	181	White
Hookdale	331052	IL	005	Bond	Worthington	779801	IN	055	Greene
Hudson	336757	IL	113	Mclean	IOWA				
Lake Bloomington	395393	IL	113	Mclean	Cairo	112376	IA	115	Louisa
Lexington	412560	IL	113	Mclean	Columbus City	155321	IA	115	Louisa
Lincoln	414351	IL	107	Logan	Keota	375936	IA	183	Washington
Loudon	009833	IL	051	Fayette	Redfield	592506	IA	049	Dallas
<i>Mahomet</i>	<i>441364</i>	<i>IL</i>	<i>019</i>	<i>Champaign</i>	Vincent	739100	IA	091	Humboldt
Manlove	009843	IL	019	Champaign	Vincent	739100	IA	187	Webster
					Vincent	739100	IA	197	Wright

Note: Alias field names are in italics.

Table 5. Storage Fields (Continued)

State and Field Name	Field Code	State/ Sub	County Code	County Name	State and Field Name	Field Code	State/ Sub	County Code	County Name
KANSAS					Bear Creek	048643	LA50	013	Bienville
<i>Adolph</i>	004349	KS	009	<i>Barton</i>	Epps	226762	LA50	035	East Carroll
Alden	008441	KS	159	Rice	Epps	226762	LA50	123	West Carroll
Boehm	077715	KS	129	Morton	Garden Island Bay	265340	LA10	075	Plaquemines
Borchers North	081683	KS	119	Meade	Hackberry West	298329	LA10	023	Cameron
Brehm	090720	KS	151	Pratt	Hester	319154	LA10	093	St James
<i>Buffalo</i>	101276	KS	205	<i>Wilson</i>	Holly	328510	LA50	031	De Soto
Collinson	154174	KS	035	Cowley	Lake Bistineau	395331	LA50	013	Bienville
<i>Colony</i>	154639	KS	003	<i>Anderson</i>	Lake Bistineau	395331	LA50	015	Bossier
Craig-Monticello	168109	KS	091	Johnson	Lake Bistineau	395331	LA50	119	Webster
Cunningham	174542	KS	095	Kingman	Ruston	620502	LA50	061	Lincoln
Cunningham	174542	KS	151	Pratt	Sulphur Mines	687737	LA10	019	Calcasieu
Elk City	219074	KS	019	Chautauqua	Unionville	728572	LA50	061	Lincoln
Elk City	219074	KS	049	Elk	Unionville	728572	LA50	111	Union
Elk City	219074	KS	125	Montgomery	Washington	750240	LA10	097	St Landry
Fredonia	256542	KS	205	Wilson	Weeks Island	754914	LA10	045	Iberia
Liberty North	413390	KS	125	Montgomery	Weeks Island	754914	LA10	101	St Mary
Liberty South	413421	KS	125	Montgomery	MARYLAND				
Lyons	436364	KS	159	Rice	Accident	002210	MD	023	Garrett
<i>Mclouth</i>	457647	KS	087	<i>Jefferson</i>	MICHIGAN				
Mclouth	462049	KS	087	Jefferson	Austin	030901	MI	107	Mecosta
Mclouth	462049	KS	103	Leavenworth	Belle River Mills	053820	MI	147	St Clair
Piqua	558155	KS	001	Allen	Blue Lake 18-28N-5W A	002837	MI	079	Kalkaska
Piqua	558155	KS	207	Woodson	Broomfield Deerfield	074351	MI	073	Isabella
Welda North	756526	KS	003	Anderson	Capac	118576	MI	147	St Clair
Welda South	756557	KS	003	Anderson	Charlton 01-30N-1W	002860	MI	137	Otsego
KENTUCKY					Chester Sec 15	003494	MI	137	Otsego
Adair North	003171	KY	091	Hancock	Cold Springs 12-28N-6W	002922	MI	079	Kalkaska
Anton	021244	KY	107	Hopkins	Cold Springs 31-28N-6W	009713	MI	079	Kalkaska
Barnsley	040094	KY	107	Hopkins	Coldwater	152252	MI	073	Isabella
<i>Bon Harbor</i>	079544	KY	059	<i>Daviess</i>	Collin	153988	MI	147	St Clair
Cecilia	004841	KY	093	Hardin	Columbus	155290	MI	147	St Clair
Center	129264	KY	009	Barren	Columbus West	155538	MI	147	St Clair
Center	129264	KY	087	Green	Cranberry Lake	168233	MI	035	Clare
Center	129264	KY	169	Metcalfe	Cranberry Lake	168233	MI	113	Missaukee
Crofton East	009721	KY	047	Christian	Croton	172387	MI	123	Newaygo
Dixie	193812	KY	101	Henderson	Excelsior 06-27N-6W	009735	MI	079	Kalkaska
Eagle Creek	210463	KY	081	Grant	Four Corners	252434	MI	147	St Clair
Eagle Creek	210463	KY	187	Owen	Freeman-Lincoln	256790	MI	035	Clare
<i>Flint Hill</i>	245385	KY	093	<i>Hardin</i>	Goodwell	280385	MI	123	Newaygo
Flint Hill Consol	012752	KY	093	Hardin	Hamilton North	301584	MI	035	Clare
Graham Lake	283842	KY	177	Muhlenberg	Hessen	319123	MI	147	St Clair
Grandview	284927	KY	059	Daviess	Howell	335361	MI	093	Livingston
Grandview	284927	KY	059	Daviess	Ira	347913	MI	147	St Clair
Greenville	289577	KY	177	Muhlenberg	Kalkaska 01-27N-7W	009799	MI	079	Kalkaska
Hanson	303692	KY	107	Hopkins	Lacey Station	393525	MI	015	Barry
Hawesville NW	011146	KY	091	Hancock	Lee 02-1S-5W	003265	MI	025	Calhoun
<i>Hickory School</i>	320852	KY	059	<i>Daviess</i>	Lee 11-1S-5W	003273	MI	025	Calhoun
Kettle Island	005569	KY	013	Bell	Lee 16	009823	MI	025	Calhoun
Kirkwood Springs	381788	KY	107	Hopkins	Lenox	410204	MI	099	Macomb
Magnolia	440775	KY	087	Green	Leonard	410731	MI	125	Oakland
Magnolia	440775	KY	099	Hart	<i>Loreed</i>	427279	MI	133	<i>Osceola</i>
Magnolia	440775	KY	123	Larue	Marion(Winterfield)	447874	MI	035	Clare
Midland	472280	KY	177	Muhlenberg	Marion(Winterfield)	447874	MI	133	Osceola
Mt Olive Church	009874	KY	227	Warren	Marysville-Morton	009849	MI	147	St Clair
Muldraugh	493184	KY	163	Meade	Muttonville	495943	MI	099	Macomb
Owensboro	532074	KY	059	Daviess	Northville	513052	MI	125	Oakland
Owensboro West	532167	KY	059	Daviess	Northville	513052	MI	161	Washtenaw
<i>Slaughters East</i>	660441	KY	107	<i>Hopkins</i>	Northville	513052	MI	163	Wayne
St Charles	673074	KY	107	Hopkins	<i>Norwich</i>	513424	MI	123	<i>Newaygo</i>
LOUISIANA					Orient	527889	MI	035	Clare
Bayou Choctaw	045581	LA10	047	Iberville	Orient	527889	MI	133	Osceola
Bayou Choctaw	045581	LA10	121	West Baton Rouge					

Note: Alias field names are in italics.

Table 5. Storage Fields (Continued)

State and Field Name	Field Code	State/ Sub	County Code	County Name	State and Field Name	Field Code	State/ Sub	County Code	County Name
Overisel	531485	MI	005	Allegan	Washington Ranch	750376	NM10	015	Eddy
Partello	541445	MI	025	Calhoun	NEW YORK				
Puttygut	575943	MI	147	St Clair	<i>Adrian</i>	<i>004504</i>	<i>NY</i>	<i>101</i>	<i>Steuben</i>
Rapid River 35-28N-7W	003354	MI	079	Kalkaska	Allegany State Park	011014	NY	009	Cattaraugus
Ray	588018	MI	099	Macomb	Beech Hill	001981	NY	003	Allegany
Reed City	593157	MI	085	Lake	Bennington	056021	NY	029	Erie
Reed City	593157	MI	133	Osceola	Bennington	056021	NY	121	Wyoming
Riverside	603992	MI	035	Clare	Colden	152221	NY	029	Erie
Riverside	603992	MI	113	Missaukee	Collins	154050	NY	029	Erie
Rolland	611379	MI	073	Isabella	Derby	189262	NY	029	Erie
Salem	625030	MI	005	Allegan	<i>Dundee</i>	<i>206160</i>	<i>NY</i>	<i>123</i>	<i>Yates</i>
Salem	625030	MI	139	Ottawa	Gilbert	271983	NY	003	Allegany
Shaver (Sumner-New Haven)	648622	MI	057	Gratiot	Greenwood	289918	NY	101	Steuben
Shaver (Sumner-New Haven)	648622	MI	117	Montcalm	Greenwood North	290073	NY	101	Steuben
Six Lakes	658449	MI	073	Isabella	Holland	327673	NY	029	Erie
Six Lakes	658449	MI	107	Mecosta	Honeoye	330612	NY	069	Ontario
Six Lakes	658449	MI	117	Montcalm	Independence East	344921	NY	003	Allegany
Swan Creek	691651	MI	147	St Clair	Independence West	002124	NY	003	Allegany
<i>W C Taggart (Six Lakes)</i>	<i>743079</i>	<i>MI</i>	<i>107</i>	<i>Mecosta</i>	Lawtons	405654	NY	029	Erie
<i>W C Taggart (Six Lakes)</i>	<i>743079</i>	<i>MI</i>	<i>117</i>	<i>Montcalm</i>	Nashville	499045	NY	009	Cattaraugus
Washington Sec 28	003536	MI	099	Macomb	Nashville	499045	NY	013	Chautauqua
Winfield	773189	MI	107	Mecosta	Perrysburg	551296	NY	009	Cattaraugus
Winfield	773189	MI	117	Montcalm	Sheridan	650885	NY	013	Chautauqua
Winterfield	774212	MI	035	Clare	Tuscarora	722702	NY	101	Steuben
Woodville	778406	MI	123	Newaygo	Wayne-Dundee	752910	NY	097	Schuyler
					Woodhull	777445	NY	101	Steuben
					Zoar	792603	NY	029	Erie
MINNESOTA					OHIO				
Waterville-Waseca	751666	MN	079	Le Sueur	<i>Benton</i>	<i>056548</i>	<i>OH</i>	<i>073</i>	<i>Hocking</i>
Waterville-Waseca	751666	MN	131	Rice	Benton	056548	OH	163	Vinton
Waterville-Waseca	751666	MN	161	Waseca	Brinker	092363	OH	029	Columbiana
MISSISSIPPI					Chippewa	139789	OH	169	Wayne
Amory	016408	MS	095	Monroe	Columbiana	155228	OH	029	Columbiana
Eminence	223786	MS	031	Covington	Crawford	168884	OH	073	Hocking
Jackson	353006	MS	049	Hinds	Gabor	262457	OH	169	Wayne
Jackson	353006	MS	121	Rankin	Guernsey	293778	OH	031	Coshocton
Muldon	492967	MS	095	Monroe	Guernsey	293778	OH	059	Guernsey
MISSOURI					Guernsey	293778	OH	119	Muskingum
Florissant	002175	MO	183	St Charles	Holmes	329130	OH	075	Holmes
Florissant	002175	MO	189	St Louis	<i>Laurel</i>	<i>404104</i>	<i>OH</i>	<i>073</i>	<i>Hocking</i>
MONTANA					Lorain	427155	OH	093	Lorain
Box Elder	084938	MT	005	Blaine	Lucas	432062	OH	005	Ashland
Box Elder	084938	MT	041	Hill	Lucas	432062	OH	139	Richland
Cedar Creek	127745	MT	025	Fallon	Mcarthur	456438	OH	163	Vinton
Cobb	150516	MT	035	Glacier	Medina	465281	OH	103	Medina
Cobb	150516	MT	101	Toole	Muskie	002010	OH	119	Muskingum
Dry Creek	203602	MT	009	Carbon	Pavonia	544080	OH	005	Ashland
Elk Basin	218981	MT	009	Carbon	Pavonia	544080	OH	139	Richland
Shelby	649614	MT	101	Toole	Perry	550800	OH	127	Perry
NEBRASKA					Stark-Summit	677011	OH	151	Stark
Big Springs	063640	NE	049	Deuel	Stark-Summit	677011	OH	153	Summit
Huntsman	340291	NE	033	Cheyenne	Wayne	752906	OH	005	Ashland
NEW MEXICO					Wayne	752906	OH	075	Holmes
Barker	039257	NM50	045	San Juan	Wayne	752906	OH	169	Wayne
Grama Ridge	284090	NM10	025	Lea	Weaver	753860	OH	005	Ashland
Keys	377052	NM10	015	Eddy	Weaver	753860	OH	083	Knox
Rhodes	597885	NM10	025	Lea	Weaver	753860	OH	139	Richland
San Ysidro Gsf	011577	NM50	043	Sandoval	Wellington	757270	OH	093	Lorain
Vandagriff	733813	NM10	015	Eddy	Wellington	757270	OH	103	Medina
Vandagriff-Keys	733844	NM10	015	Eddy	Wertz	759037	OH	169	Wayne
					Zane	790229	OH	119	Muskingum

Note: Alias field names are in italics.

Table 5. Storage Fields (Continued)

State and Field Name	Field Code	State/ Sub	County Code	County Name	State and Field Name	Field Code	State/ Sub	County Code	County Name
OKLAHOMA									
<i>Ada</i>	002830	OK	123	<i>Pontotoc</i>	<i>Henderson</i>	315837	PA	121	<i>Venango</i>
<i>Bartlesville</i>	041427	OK	147	<i>Washington</i>	<i>Holbrook</i>	327239	PA	059	<i>Greene</i>
Chiles Dome	138766	OK	029	Coal	<i>Hughes</i>	337532	PA	019	<i>Butler</i>
Depew	188952	OK	037	Creek	<i>Hunters Cave</i>	339950	PA	059	<i>Greene</i>
Edmond West	214586	OK	073	Kingfisher	<i>Irwin</i>	349153	PA	129	<i>Westmoreland</i>
Edmond West	214586	OK	083	Logan	<i>Keasey</i>	370945	PA	019	<i>Butler</i>
Enfisco	225088	OK	113	Osage	<i>Keelor</i>	371213	PA	083	<i>Mckean</i>
Greasy Creek	287314	OK	063	Hughes	<i>Kinter</i>	380765	PA	063	<i>Indiana</i>
Haskell	309272	OK	101	Muskogee	<i>Kirby</i>	381292	PA	059	<i>Greene</i>
Hopeton North	331765	OK	151	Woods	<i>Leidy</i>	408747	PA	035	<i>Clinton</i>
<i>Osage</i>	529036	OK	113	<i>Osage</i>	<i>Leidy</i>	408747	PA	105	<i>Potter</i>
<i>Sayre</i>	636469	OK	009	<i>Beckham</i>	<i>Majorsville</i>	441705	PA	059	<i>Greene</i>
<i>Stuart</i>	685505	OK	121	<i>Pittsburg</i>	<i>Majorsville</i>	441705	PA	125	<i>Washington</i>
Ulan East	726712	OK	121	Pittsburg	<i>Markle</i>	448308	PA	065	<i>Jefferson</i>
Webb	753953	OK	053	Grant	<i>Mckinley</i>	461429	PA	047	<i>Elk</i>
Woolaroc	778871	OK	113	Osage	<i>Meade Run</i>	463638	PA	083	<i>Mckean</i>
					<i>Meeker</i>	465622	PA	117	<i>Tioga</i>
					<i>Mohan Run</i>	480876	PA	047	<i>Elk</i>
					<i>Munderf</i>	493897	PA	065	<i>Jefferson</i>
					<i>Murrysville</i>	494982	PA	003	<i>Allegheny</i>
					<i>Oakford</i>	517434	PA	129	<i>Westmoreland</i>
					<i>Owls Nest</i>	532477	PA	047	<i>Elk</i>
					<i>Palmer Storage</i>	536981	PA	117	<i>Tioga</i>
					<i>Patton</i>	542933	PA	129	<i>Westmoreland</i>
					<i>Portman</i>	567146	PA	019	<i>Butler</i>
					<i>Pratt</i>	571347	PA	059	<i>Greene</i>
					<i>Pratt</i>	571347	PA	125	<i>Washington</i>
					<i>Queen</i>	579391	PA	053	<i>Forest</i>
					<i>Queen</i>	579391	PA	123	<i>Warren</i>
					<i>Rager Mountain</i>	582872	PA	021	<i>Cambria</i>
					<i>Rush Run</i>	619479	PA	051	<i>Fayette</i>
					<i>Sabinsville</i>	623108	PA	105	<i>Potter</i>
					<i>Sabinsville</i>	623108	PA	117	<i>Tioga</i>
					<i>Saltsburg</i>	627155	PA	063	<i>Indiana</i>
					<i>Sharon</i>	647971	PA	105	<i>Potter</i>
					<i>South Bend</i>	666548	PA	005	<i>Armstrong</i>
					<i>South Bend</i>	666548	PA	063	<i>Indiana</i>
					<i>Sprankle</i>	670764	PA	065	<i>Jefferson</i>
					<i>St Marys</i>	674345	PA	047	<i>Elk</i>
					<i>State Line</i>	677538	PA	105	<i>Potter</i>
					<i>Summit</i>	688357	PA	049	<i>Erie</i>
					<i>Swarts</i>	692023	PA	059	<i>Greene</i>
					<i>Swarts West</i>	692034	PA	059	<i>Greene</i>
					<i>Swede Hill</i>	692147	PA	083	<i>Mckean</i>
					<i>Tamarack</i>	696938	PA	035	<i>Clinton</i>
					<i>Tepe</i>	701449	PA	003	<i>Allegheny</i>
					<i>Tioga</i>	709091	PA	117	<i>Tioga</i>
					<i>Trafford</i>	715192	PA	129	<i>Westmoreland</i>
					<i>Truittsburg</i>	719222	PA	031	<i>Clarion</i>
					<i>Wadsworth-North Oakland</i>	743970	PA	019	<i>Butler</i>
					<i>Webster</i>	754542	PA	129	<i>Westmoreland</i>
					<i>Wellendorf</i>	757146	PA	083	<i>Mckean</i>
					<i>Wharton</i>	762308	PA	023	<i>Cameron</i>
					<i>Wharton</i>	762308	PA	105	<i>Potter</i>
					<i>Whitehorn Creek</i>	010238	PA	129	<i>Westmoreland</i>
					<i>Wolf Creek</i>	776236	PA	121	<i>Venango</i>
					TEXAS				
					<i>Ambassador</i>	015230	TX90	077	<i>Clay</i>
					<i>Bammel</i>	037242	TX30	201	<i>Harris</i>
					<i>Bethel Dome</i>	009684	TX60	001	<i>Anderson</i>
					<i>Big Hill</i>	061780	TX30	245	<i>Jefferson</i>
					<i>Bryan Mound</i>	098160	TX30	039	<i>Brazoria</i>
					<i>Bryson South</i>	099028	TX90	237	<i>Jack</i>
OREGON									
Mist	478835	OR	009	Columbia					
PENNSYLVANIA									
<i>Alabran</i>	006674	PA	063	<i>Indiana</i>					
Artemas	026747	PA	009	Bedford					
<i>Artemus A Storage</i>	009675	PA	009	<i>Bedford</i>					
<i>Belmouth</i>	054750	PA	047	<i>Elk</i>					
Big Run	063330	PA	033	Clearfield					
Big Run	063330	PA	063	Indiana					
Big Run	063330	PA	065	Jefferson					
<i>Blackhawk</i>	069081	PA	007	<i>Beaver</i>					
<i>Blacktown</i>	069546	PA	085	<i>Mercer</i>					
Boone Mountain	081063	PA	033	Clearfield					
Boone Mountain	081063	PA	047	Elk					
Brush Run	097742	PA	007	Beaver					
Bull Creek	102516	PA	003	Allegheny					
<i>Bullers</i>	102702	PA	065	<i>Jefferson</i>					
<i>Bunola</i>	103446	PA	003	<i>Allegheny</i>					
<i>Bunola</i>	103446	PA	125	<i>Washington</i>					
<i>Clark</i>	145385	PA	063	<i>Indiana</i>					
<i>Colvin</i>	155600	PA	125	<i>Washington</i>					
Corry	162823	PA	049	Erie					
Deerlick	186162	PA	123	Warren					
<i>Donegal</i>	196828	PA	125	<i>Washington</i>					
<i>Duhring</i>	205168	PA	053	<i>Forest</i>					
<i>East Branch A</i>	211672	PA	083	<i>Mckean</i>					
<i>East Branch A</i>	211672	PA	123	<i>Warren</i>					
<i>East Branch B</i>	211703	PA	083	<i>Mckean</i>					
<i>East Branch B</i>	211703	PA	123	<i>Warren</i>					
Ellisburg	220996	PA	105	Potter					
<i>Fair-Helm</i>	233351	PA	005	<i>Armstrong</i>					
<i>Finleyville</i>	241428	PA	003	<i>Allegheny</i>					
<i>Finleyville</i>	241428	PA	125	<i>Washington</i>					
Five Forks	243009	PA	009	Bedford					
Frostburg	259010	PA	065	Jefferson					
<i>Galbraith</i>	263480	PA	065	<i>Jefferson</i>					
<i>Gamble-Hayden</i>	263914	PA	003	<i>Allegheny</i>					
<i>Greenlick</i>	289081	PA	035	<i>Clinton</i>					
<i>Greenlick</i>	289081	PA	105	<i>Potter</i>					
Harrison	307691	PA	105	Potter					
<i>Haverline</i>	310264	PA	003	<i>Allegheny</i>					
<i>Heard</i>	312923	PA	059	<i>Greene</i>					
<i>Heard</i>	312923	PA	125	<i>Washington</i>					
Hebron	313512	PA	105	Potter					
<i>Henderson</i>	315837	PA	085	<i>Mercer</i>					

Note: Alias field names are in italics.

Table 5. Storage Fields (Continued)

State and Field Name	Field Code	State/ Sub	County Code	County Name	State and Field Name	Field Code	State/ Sub	County Code	County Name
Burnell	105089	TX20	025	Bee	Elk-Poca (Sissonville)	219529	WV	039	Kanawha
Burnell	105089	TX20	255	Karnes	Elk-Poca (Sissonville)	219529	WV	079	Putnam
Butler	107383	TX50	161	Freestone	Fink Creek (Dry Fork)	241304	WV	041	Lewis
Clear Lake	147214	TX30	201	Harris	<i>Fink-Kennedy</i>	<i>241335</i>	<i>WV</i>	<i>017</i>	<i>Doddridge</i>
Clear Lake West	147307	TX30	201	Harris	<i>Fink-Kennedy</i>	<i>241335</i>	<i>WV</i>	<i>033</i>	<i>Harrison</i>
Clemens NE	147891	TX30	039	Brazoria	<i>Fink-Kennedy</i>	<i>241335</i>	<i>WV</i>	<i>041</i>	<i>Lewis</i>
Cliffside	148547	TX95	375	Potter	Five Mile-Carpenter	243102	WV	039	Kanawha
De Leon	183713	TX70	093	Comanche	Gauley Mountain	267851	WV	019	Fayette
Felmac	238583	TX85	165	Gaines	Gauley Mountain	267851	WV	067	Nicholas
Hilbig	322309	TX10	021	Bastrop	Glady	274789	WV	075	Pocahontas
Hill	322712	TX70	133	Eastland	Glady	274789	WV	083	Randolph
Janellen	354742	TX70	049	Brown	<i>Grapevine A & B</i>	<i>285795</i>	<i>WV</i>	<i>039</i>	<i>Kanawha</i>
Katy	370123	TX30	157	Fort Bend	<i>Hayes</i>	<i>311132</i>	<i>WV</i>	<i>049</i>	<i>Marion</i>
La-Pan	391797	TX90	077	Clay	Herbert	317697	WV	099	Wayne
Lake Dallas	396106	TX90	121	Denton	<i>Hunt</i>	<i>339392</i>	<i>WV</i>	<i>039</i>	<i>Kanawha</i>
Lansing North	401810	TX60	203	Harrison	Hurricane Creek	340601	WV	079	Putnam
Lee Ray	407662	TX70	429	Stephens	<i>Kausooth</i>	<i>370371</i>	<i>WV</i>	<i>051</i>	<i>Marshall</i>
Lone Camp	424179	TX70	363	Palo Pinto	<i>Lake</i>	<i>394866</i>	<i>WV</i>	<i>079</i>	<i>Putnam</i>
Loop	426876	TX85	165	Gaines	<i>Lanham</i>	<i>401624</i>	<i>WV</i>	<i>039</i>	<i>Kanawha</i>
New York City	505145	TX90	077	Clay	<i>Lanham</i>	<i>401624</i>	<i>WV</i>	<i>079</i>	<i>Putnam</i>
Pecan Station	546832	TX75	451	Tom Green	Little Cacapon	418024	WV	027	Hampshire
Pickton	554962	TX50	223	Hopkins	Liverpool	420613	WV	035	Jackson
Pottsville South	568851	TX70	193	Hamilton	Liverpool	420613	WV	087	Roane
Rotherwood West	615006	TX30	201	Harris	Liverpool	420613	WV	105	Wirt
Tri-Cities	716897	TX50	213	Henderson	Logansport	423063	WV	049	Marion
View	738604	TX70	441	Taylor	<i>Lost Creek</i>	<i>428271</i>	<i>WV</i>	<i>033</i>	<i>Harrison</i>
Worsham-Steed	779584	TX90	237	Jack	Lynn Camp	436178	WV	103	Wetzel
Yoast	787149	TX10	021	Bastrop	Majorsville	441705	WV	051	Marshall
UTAH					Mannington	444340	WV	049	Marion
Bridger Lake	091743	UT	043	Summit	<i>Maple Lake</i>	<i>445487</i>	<i>WV</i>	<i>033</i>	<i>Harrison</i>
Chalk Creek	131078	UT	043	Summit	<i>Maple Lake</i>	<i>445487</i>	<i>WV</i>	<i>091</i>	<i>Taylor</i>
Clay Basin	146315	UT	009	Daggett	<i>Mobley</i>	<i>479915</i>	<i>WV</i>	<i>103</i>	<i>Wetzel</i>
Coalville	150268	UT	043	Summit	Murphy Creek (Freemansburg)	494610	WV	017	Doddridge
VIRGINIA					Murphy Creek (Freemansburg)	494610	WV	041	Lewis
Early Grove	211424	VA	169	Scott	Newberne	505393	WV	021	Gilmer
Early Grove	211424	VA	191	Washington	<i>Rackett-Newberne</i>	<i>582509</i>	<i>WV</i>	<i>021</i>	<i>Gilmer</i>
WASHINGTON					<i>Raleigh</i>	<i>584174</i>	<i>WV</i>	<i>081</i>	<i>Raleigh</i>
Jackson Prairie	353192	WA	041	Lewis	<i>Rhodes</i>	<i>597885</i>	<i>WV</i>	<i>041</i>	<i>Lewis</i>
WEST VIRGINIA					<i>Ripley</i>	<i>602659</i>	<i>WV</i>	<i>035</i>	<i>Jackson</i>
Aspinall-Finster	028700	WV	041	Lewis	Rockport	608868	WV	035	Jackson
Augusta	030591	WV	027	Hampshire	Rockport	608868	WV	105	Wirt
Big Run-Birchfield	063361	WV	103	Wetzel	Rockport	608868	WV	107	Wood
Blue Creek (Falling Rock)	075064	WV	039	Kanawha	Shirley	652900	WV	095	Tyler
<i>Bridgeport</i>	<i>091588</i>	<i>WV</i>	<i>033</i>	<i>Harrison</i>	Silver Hill	656279	WV	103	Wetzel
Bridgeport-Pruntytown	091681	WV	033	Harrison	Sinking Creek	657612	WV	021	Gilmer
Bridgeport-Pruntytown	091681	WV	091	Taylor	<i>Skin Creek</i>	<i>659635</i>	<i>WV</i>	<i>041</i>	<i>Lewis</i>
<i>Browns Creek</i>	<i>096052</i>	<i>WV</i>	<i>039</i>	<i>Kanawha</i>	Slab Fork	659945	WV	081	Raleigh
<i>Browns Creek</i>	<i>096052</i>	<i>WV</i>	<i>079</i>	<i>Putnam</i>	Terra Alta	701821	WV	077	Preston
Burdett-St Albans	104035	WV	039	Kanawha	<i>Victory</i>	<i>738077</i>	<i>WV</i>	<i>051</i>	<i>Marshall</i>
Burdett-St Albans	104035	WV	079	Putnam	<i>Victory</i>	<i>738077</i>	<i>WV</i>	<i>103</i>	<i>Wetzel</i>
Burning Springs South	105430	WV	105	Wirt	Weston-Jane Lew	760959	WV	033	Harrison
Cameron-Kausooth	004358	WV	051	Marshall	Weston-Jane Lew	760959	WV	041	Lewis
<i>Coco</i>	<i>150919</i>	<i>WV</i>	<i>039</i>	<i>Kanawha</i>	Wilbur	767795	WV	017	Doddridge
<i>Comet</i>	<i>155941</i>	<i>WV</i>	<i>091</i>	<i>Taylor</i>	Wilbur	767795	WV	095	Tyler
Conings	157615	WV	017	Doddridge	X- 1	782253	WV	079	Putnam
Conings	157615	WV	021	Gilmer	WYOMING				
Craddock	167954	WV	083	Randolph	Billy Creek	064880	WY	019	Johnson
Craddock	167954	WV	097	Upshur	Brady	087651	WY	037	Sweetwater
<i>Derrick's Creek</i>	<i>189324</i>	<i>WV</i>	<i>039</i>	<i>Kanawha</i>	Bunker Hill	103353	WY	007	Carbon
Elk-Poca (Sissonville)	219529	WV	035	Jackson	Chimney Butte	139262	WY	023	Lincoln

Note: Alias field names are in italics.

Table 6. Fields Located in Multiple Jurisdictions

Field Code	Field Name	State Sub	County Code	Field Code	Field Name	State Sub	County Code
ALABAMA & FLORIDA				COLORADO & NEBRASKA			
235596	FANNY CHURCH	AL	053	546553	PEBBLE	CO	075
355672	JAY	FL	033	546553	PEBBLE	NE	033
418505	LITTLE ESCAMBIA CREEK	AL	053	COLORADO & NEW MEXICO 50			
355672	JAY	FL	033	039319	BARKER DOME	CO	067
418505	LITTLE ESCAMBIA CREEK	AL	053	039288	BARKER CREEK	NM50	045
355672	JAY	FL	113	343874	IGNACIO-BLANCO	CO	007
ALABAMA & MISSISSIPPI				070724	BLANCO	NM50	045
099311	BUCATUNNA CREEK	AL	023	343874	IGNACIO-BLANCO	CO	067
099311	BUCATUNNA CREEK	MS	023	070724	BLANCO	NM50	045
401314	LANGSDALE	AL	023	COLORADO & UTAH			
401314	LANGSDALE	MS	023	111260	CACHE	CO	083
ALABAMA 05 & OTHER GULF 00				459538	MCELMO MESA	UT	037
010820	NORTH CENTRAL GULF	AL05	990	245474	FLODINE PARK	CO	083
886827	MOBILE BLK 827	OG00	995	349587	ISMAY	UT	037
010821	NORTHWEST GULF	AL05	990	245474	FLODINE PARK	CO	083
886823	MOBILE BLK 823	OG00	995	349618	ISMAY SOUTH	UT	037
010821	NORTHWEST GULF	AL05	990	666641	SOUTH CANYON	CO	045
886868	MOBILE BLK 868	OG00	995	038420	BAR X	UT	019
014292	STATE 109	AL05	990	666641	SOUTH CANYON	CO	045
886821	MOBILE BLK 821	OG00	995	628068	SAN ARROYO	UT	019
ARKANSAS & LOUISIANA 50				666641	SOUTH CANYON	CO	077
024391	ARKANA	AR	073	038420	BAR X	UT	019
024391	ARKANA	LA50	015	666641	SOUTH CANYON	CO	077
311380	HAYNESVILLE	AR	027	677662	STATELINE	UT	019
311380	HAYNESVILLE	LA50	027	COLORADO & WYOMING			
311380	HAYNESVILLE	AR	027	320139	HIAWATHA	CO	081
311380	HAYNESVILLE	LA50	119	320139	HIAWATHA	WY	037
591855	RED ROCK	AR	027	419621	LITTLE SNAKE	CO	081
653551	SHONGALOO NORTH-RED ROCK	LA50	119	419621	LITTLE SNAKE	WY	037
609860	RODESSA	AR	091	569161	POWDER WASH	CO	081
609860	RODESSA	LA50	017	569130	POWDER SPRINGS	WY	037
653520	SHONGALOO NORTH	AR	027	615812	ROUND TABLE	CO	081
653551	SHONGALOO NORTH-RED ROCK	LA50	119	615812	ROUND TABLE	WY	037
671725	SPRINGHILL	AR	027	677662	STATELINE	CO	081
671725	SPRINGHILL	LA50	119	677538	STATE LINE	WY	037
ARKANSAS & TEXAS 60				760277	WEST SIDE CANAL	CO	081
074196	BLOOMBURG	AR	091	034979	BAGGS SOUTH	WY	007
074196	BLOOMBURG	TX60	067	760277	WEST SIDE CANAL	CO	081
609860	RODESSA	AR	091	760277	WEST SIDE CANAL	WY	007
609860	RODESSA	TX60	067	ILLINOIS & INDIANA			
CALIFORNIA 00 & CALIFORNIA 05				011572	ALLENDALE	IL	185
121397	CARPINTERIA OFFSHORE	CA00	995	146749	CLAYPOLE HILLS CONSOL	IN	083
121397	CARPINTERIA OFFSHORE	CA05	990	055122	BEMAN EAST	IL	101
COLORADO & KANSAS				048488	BEAMAN EAST CONSOL	IN	083
012453	ARAPAHOE EAST	CO	017	068523	BLACK RIVER	IL	193
011646	ARAPAHOEKAN	KS	199	068554	BLACK RIVER CONSOL	IN	129
012168	FRONTERA	CO	017	346998	INMAN EAST CONSOL	IL	059
681382	STOCKHOLM	KS	199	346967	INMAN EAST	IN	129
012168	FRONTERA	CO	017	371627	KEENSBURG SOUTH	IL	185
011860	STOCKHOLM SOUTH	KS	199	291313	GRIFFIN CONSOL	IN	051
289918	GREENWOOD	CO	009	405251	LAWRENCE COUNTY DIVISION	IL	101
290011	GREENWOOD GAS AREA	KS	129	673384	ST FRANCISVILLE CONSOL	IN	083
013490	JACE	CO	061	453702	MAUNIE EAST	IL	193
013500	MOORE-JOHNSON	KS	071	453702	MAUNIE EAST	IN	129
681382	STOCKHOLM	CO	017	490332	MT CARMEL	IL	185
681475	STOCKHOLM SW	KS	071	490363	MT CARMEL CONSOL	IN	051
				490332	MT CARMEL	IL	185
				490425	MT CARMEL NORTH	IN	083

Table 6. Fields Located in Multiple Jurisdictions (Continued)

Field Code	Field Name	State Sub	County Code	Field Code	Field Name	State Sub	County Code
503874	NEW HARMONY CONSOL	IL	193	337377	HUFFSTUTTER	KS	147
291313	GRIFFIN CONSOL	IN	051	012564	ALMA SOUTH	NE	083
503874	NEW HARMONY CONSOL	IL	193	001551	LAWSON NE	KS	039
291313	GRIFFIN CONSOL	IN	129	772166	WILSONVILLE SW	NE	065
503967	NEW HARMONY SOUTH	IL	193	KANSAS & OKLAHOMA			
756200	WELBORN NORTH CONSOL	IN	129	112872	CALDWELL	KS	191
504029	NEW HAVEN CONSOL	IL	193	112872	CALDWELL	OK	053
335051	HOVEY WEST	IN	129	116964	CANEY	KS	125
504029	NEW HAVEN CONSOL	IL	193	116623	CANARY	OK	147
756185	WELBORN CONSOL	IN	129	145447	CLARK CREEK	KS	025
516721	OAK GROVE	IL	059	145447	CLARK CREEK	OK	059
516721	OAK GROVE	IN	129	218702	ELGIN	KS	019
607411	ROCHESTER	IL	185	218733	ELGIN SOUTH	OK	113
607411	ROCHESTER	IN	051	219663	ELKHART	KS	129
673415	ST FRANCISVILLE EAST	IL	101	122606	CARTHAGE DISTRICT NE	OK	139
673384	ST FRANCISVILLE CONSOL	IN	083	241118	FINCHAM	KS	119
677538	STATE LINE	IL	023	480070	MOCANE-LAVERNE GAS AREA	OK	007
677538	STATE LINE	IN	167	290011	GREENWOOD GAS AREA	KS	129
ILLINOIS & KENTUCKY				122668	CARTHAGE GAS AREA	OK	139
649056	SHAWNEETOWN EAST	IL	059	337780	HUGOTON GAS AREA	KS	175
649056	SHAWNEETOWN EAST	KY	225	295545	GUYMON-HUGOTON GAS AREA	OK	139
INDIANA & KENTUCKY				337780	HUGOTON GAS AREA	KS	189
039257	BARKER	IN	163	295545	GUYMON-HUGOTON GAS AREA	OK	139
039257	BARKER	KY	101	413049	LIBERAL-LIGHT	KS	175
393595	LACONIA	IN	061	480070	MOCANE-LAVERNE GAS AREA	OK	007
194968	DOE RUN	KY	163	461150	MCKAY	KS	035
569502	POWELLS LAKE CONSOL	IN	129	139014	CHILOCCO EAST	OK	071
569471	POWELLS LAKE	KY	225	461491	MCKINNEY	KS	025
662394	SMITH MILLS NORTH	IN	129	480070	MOCANE-LAVERNE GAS AREA	OK	007
662332	SMITH MILLS CONSOL	KY	101	461491	MCKINNEY	KS	119
INDIANA & MICHIGAN				480070	MOCANE-LAVERNE GAS AREA	OK	007
219694	ELKHART NORTH	IN	039	494579	MURPHY	KS	191
215485	EDWARDSBURG	MI	027	192479	DILWORTH DISTRICT	OK	071
INDIANA & OHIO				551823	PERU-SEDAN	KS	019
716680	TRENTON	IN	001	196518	DOMES-POND CREEK	OK	113
005094	CHATTANOOGA	OH	107	551823	PERU-SEDAN	KS	019
716680	TRENTON	IN	001	721307	TURKEY CREEK	OK	113
005777	WILLSHIRE	OH	161	696659	TALOGA	KS	129
716680	TRENTON	IN	075	244482	FLATS NW	OK	139
005094	CHATTANOOGA	OH	107	723065	TUTTLE SE	KS	033
KANSAS & MISSOURI				429790	LOVEDALE NW	OK	059
178946	DALLAS	KS	091	724826	TYRO	KS	125
411537	LESTER	MO	095	116623	CANARY	OK	147
265805	GARLAND	KS	011	776608	WOLGAMOTT	KS	007
002598	SWARTZ-GARLAND	MO	217	776608	WOLGAMOTT	OK	151
429108	LOUISBURG	KS	121	786333	YELLOWSTONE NORTH	KS	033
002651	FREEMAN-WESTLINE	MO	037	786302	YELLOWSTONE	OK	151
429108	LOUISBURG	KS	121	KENTUCKY & TENNESSEE			
002602	LIMPUS	MO	037	004672	BEATY	KY	053
429108	LOUISBURG	KS	121	677755	STATIC	TN	137
002603	LISLE	MO	037	KENTUCKY & VIRGINIA			
681041	STILLWELL	KS	091	011711	ELKHORN CITY BS EAST	KY	195
747512	WALTON	MO	037	012915	BREAKS-HAYSI	VA	027
KANSAS & NEBRASKA				005786	WOODMAN EAST	KY	195
071468	BLEES	KS	039	008403	HURLEY	VA	027
657643	SINK	NE	145	KENTUCKY & WEST VIRGINIA			
332467	HORINEK	KS	153	076961	BOARD TREE	KY	195
332467	HORINEK	NE	087	271983	GILBERT	WV	059
				010687	BUSKIRK NORTH	KY	195
				440775	MAGNOLIA	WV	059

Table 6. Fields Located in Multiple Jurisdictions (Continued)

Field Code	Field Name	State Sub	County Code	Field Code	Field Name	State Sub	County Code
014094	FALLSBURG CONSOL	KY	127	935028	WEST CAMERON BLK 28	LA00	995
429046	LOUISA	WV	099	935028	WEST CAMERON BLK 28	LA05	990
429046	LOUISA	KY	127	935033	WEST CAMERON BLK 33	LA00	995
429046	LOUISA	WV	099	935033	WEST CAMERON BLK 33	LA05	990
005786	WOODMAN EAST	KY	195	935045	WEST CAMERON BLK 45	LA00	995
271983	GILBERT	WV	059	935045	WEST CAMERON BLK 45	LA05	990
010881	ZELDA	KY	127	935049	WEST CAMERON BLK 49	LA00	995
250140	FORT GAY-HUBBARDSTOWN	WV	099	935049	WEST CAMERON BLK 49	LA05	990
LOUISIANA 00 & LOUISIANA 05				942027	WEST DELTA BLK 27	LA00	995
803002	BAY MARCHAND BLK 2	LA00	995	942027	WEST DELTA BLK 27	LA05	990
803002	BAY MARCHAND BLK 2	LA05	990	942035	WEST DELTA BLK 35	LA00	995
810053	BRETON SOUND BLK 53	LA00	995	942018	WEST DELTA BLK 18	LA05	990
810053	BRETON SOUND BLK 53	LA05	990	LOUISIANA 00 & OTHER GULF 00			
159661	COON POINT	LA00	995	933022	VIOSCA KNOLL BLK 22	LA00	995
159661	COON POINT	LA05	990	886990	MOBILE BLK 990	OG00	995
842016	GRAND ISLE BLK 16	LA00	995	LOUISIANA 00 & TEXAS 00			
842016	GRAND ISLE BLK 16	LA05	990	852330	HIGH ISLAND EA SX BLK A330	LA00	995
842018	GRAND ISLE BLK 18	LA00	995	852330	HIGH ISLAND EA SX BLK A330	TX00	995
842018	GRAND ISLE BLK 18	LA05	990	852370	HIGH ISLAND EA SX BLK A370	LA00	995
842025	GRAND ISLE BLK 25	LA00	995	852370	HIGH ISLAND EA SX BLK A370	TX00	995
842025	GRAND ISLE BLK 25	LA05	990	890010	SABINE PASS BLK 10	LA00	995
413824	LIGHTHOUSE POINT	LA00	995	890010	SABINE PASS BLK 10	TX00	995
413824	LIGHTHOUSE POINT	LA05	990	890017	SABINE PASS BLK 17	LA00	995
866151	MAIN PASS BLK 151	LA00	995	890017	SABINE PASS BLK 17	TX00	995
866074	MAIN PASS BLK 74	LA05	990	937663	WEST CAMERON SA BLK 663	LA00	995
866006	MAIN PASS BLK 6	LA00	995	937663	WEST CAMERON SA BLK 663	TX00	995
866006	MAIN PASS BLK 6	LA05	990	LOUISIANA 10 & TEXAS 30			
866069	MAIN PASS BLK 69	LA00	995	011789	ALLIGATOR LAKE	LA10	011
866069	MAIN PASS BLK 69	LA05	990	011789	ALLIGATOR LAKE	TX30	351
866073	MAIN PASS BLK 73	LA00	995	469094	MERRYVILLE	LA10	011
866074	MAIN PASS BLK 74	LA05	990	469094	MERRYVILLE	TX30	351
894015	SHIP SHOAL BLK 15	LA00	995	554404	PHOENIX LAKE	LA10	019
894015	SHIP SHOAL BLK 15	LA05	990	554404	PHOENIX LAKE	TX30	361
894069	SHIP SHOAL BLK 69	LA00	995	622922	SABINE LAKE NORTH	LA10	023
894066	SHIP SHOAL BLK 66	LA05	990	622922	SABINE LAKE NORTH	TX30	361
894072	SHIP SHOAL BLK 72	LA00	995	659728	SKINNER LAKES	LA10	011
894072	SHIP SHOAL BLK 72	LA05	990	659728	SKINNER LAKES	TX30	351
909001	SOUTH PASS BLK 1	LA00	995	LOUISIANA 50 & MISSISSIPPI			
909001	SOUTH PASS BLK 1	LA05	990	066415	BISLAND BAYOU	LA50	029
909020	SOUTH PASS BLK 20	LA00	995	066415	BISLAND BAYOU	MS	001
909020	SOUTH PASS BLK 20	LA05	990	228196	ESPERANCE POINT	LA50	029
909021	SOUTH PASS BLK 21	LA00	995	228196	ESPERANCE POINT	MS	001
909021	SOUTH PASS BLK 21	LA05	990	272479	GILES BEND	LA50	029
909026	SOUTH PASS BLK 26	LA00	995	272479	GILES BEND	MS	001
909026	SOUTH PASS BLK 26	LA05	990	499169	NATCHEZ FERRY	LA50	029
909027	SOUTH PASS BLK 27	LA00	995	499169	NATCHEZ FERRY	MS	001
909027	SOUTH PASS BLK 27	LA05	990	610201	RODNEY ISLAND	LA50	107
909030	SOUTH PASS BLK 30	LA00	995	610201	RODNEY ISLAND	MS	063
909030	SOUTH PASS BLK 30	LA05	990	LOUISIANA 50 & TEXAS 60			
909042	SOUTH PASS BLK 42	LA00	995	053572	BELLE BOWER	LA50	031
909042	SOUTH PASS BLK 42	LA05	990	053572	BELLE BOWER	TX60	365
909061	SOUTH PASS BLK 61	LA00	995	058935	BETHANY-LONGSTREET	LA50	017
909006	SOUTH PASS BLK 6	LA05	990	058904	BETHANY	TX60	365
913078	SOUTH PASS SA BLK 78	LA00	995	111694	CADDO PINE ISLAND	LA50	017
913078	SOUTH PASS SA BLK 78	LA05	990	447812	MARION COUNTY	TX60	315
929014	VERMILION BLK 14	LA00	995	290197	GREENWOOD-WASKOM	LA50	017
929014	VERMILION BLK 14	LA05	990	750612	WASKOM	TX60	365
929014	VERMILION BLK 14	LA00	995	423063	LOGANSPOUT	LA50	031
929028	VERMILION BLK 28	LA05	990	423063	LOGANSPOUT	TX60	365
935017	WEST CAMERON BLK 17	LA00	995				
935017	WEST CAMERON BLK 17	LA05	990				

Table 6. Fields Located in Multiple Jurisdictions (Continued)

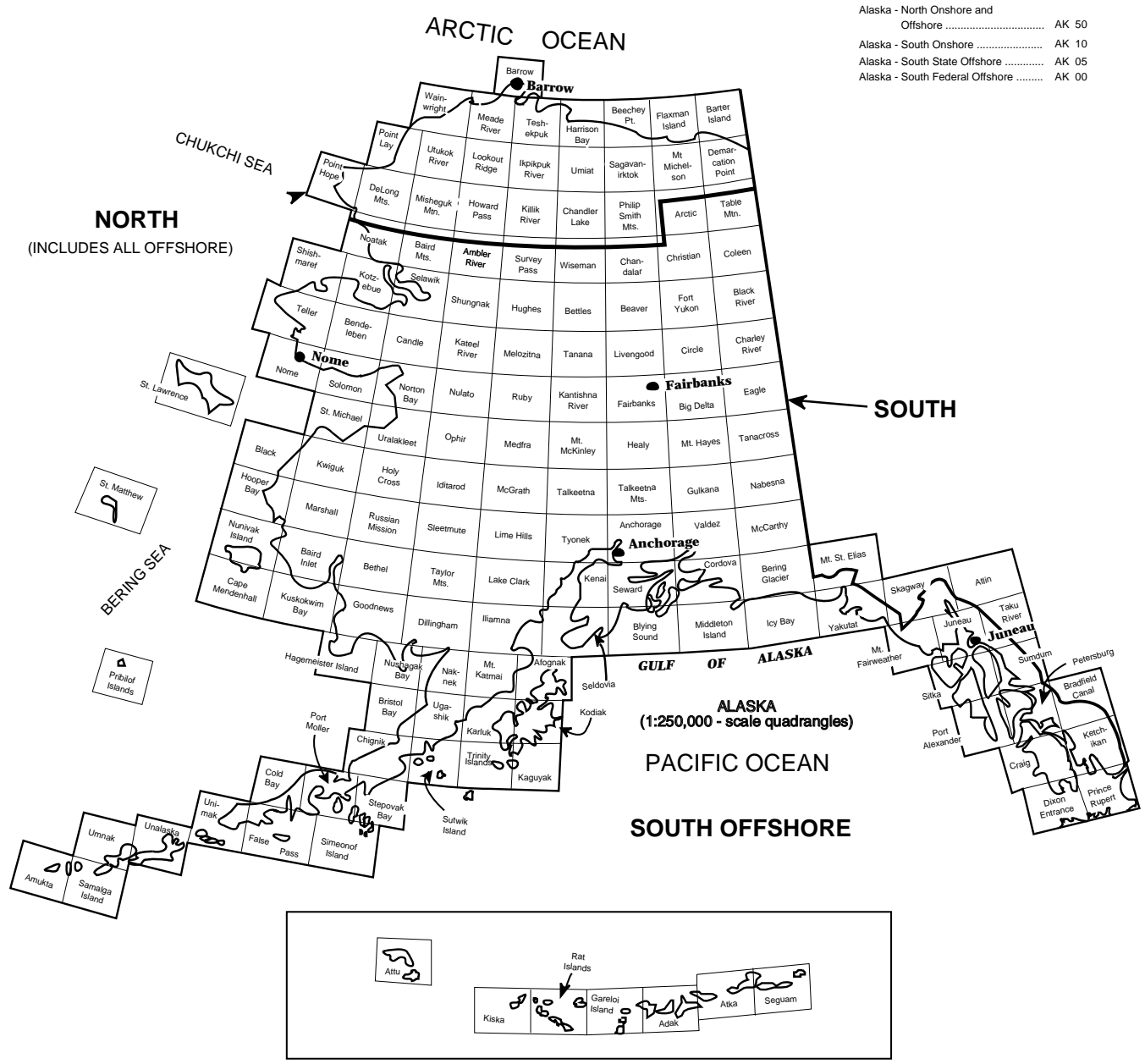
Field Code	Field Name	State Sub	County Code	Field Code	Field Name	State Sub	County Code
426504	LONGWOOD	LA50	017	325720	HOBBS EAST	NM10	025
426504	LONGWOOD	TX60	203	325720	HOBBS EAST	TX85	165
609860	RODESSA	LA50	017	420117	LITTMAN	NM10	025
609860	RODESSA	TX60	067	420117	LITTMAN	TX85	165
609860	RODESSA	LA50	017				
609860	RODESSA	TX60	315				
MARYLAND & PENNSYLVANIA				NY & PENNSYLVANIA			
501504	NEGRO MOUNTAIN	MD	023	086938	BRADFORD	NY	009
501504	NEGRO MOUNTAIN	PA	111	086938	BRADFORD	PA	083
				094130	BROOKFIELD	NY	101
				094130	BROOKFIELD	PA	117
				107176	BUSTI	NY	013
				686683	SUGAR GROVE	PA	123
				307722	HARRISON EAST	NY	101
				307691	HARRISON	PA	105
				442573	MALLORY	NY	009
				759626	WEST BRANCH	PA	083
				599404	RICHBURG	NY	003
				652414	SHINGLEHOUSE	PA	083
				599404	RICHBURG	NY	003
				652414	SHINGLEHOUSE	PA	105
				647971	SHARON	NY	003
				652414	SHINGLEHOUSE	PA	105
				675523	STAGECOACH	NY	107
				675523	STAGECOACH	PA	015
				677538	STATE LINE	NY	003
				677538	STATE LINE	PA	105
				OHIO & PENNSYLVANIA			
				015217	BUSHNELL-CONNEAUT	OH	007
				157832	CONNEAUT	PA	039
				OHIO & WEST VIRGINIA			
				005001	ATHALIA	OH	087
				340105	HUNTINGTON	WV	011
				005001	ATHALIA	OH	087
				340105	HUNTINGTON	WV	099
				039505	BARLOW	OH	167
				540174	PARKERSBURG	WV	107
				054409	BELLS RUN	OH	167
				674345	ST MARYS	WV	073
				082830	BOSWORTH	OH	167
				674345	ST MARYS	WV	073
				005056	BRILLIANT	OH	081
				686435	SUCKERROD	WV	009
				104872	BURLINGTON	OH	013
				276711	GLENN RUN	WV	069
				005096	CHESIRE	OH	053
				562837	POINT PLEASANT	WV	053
				284927	GRANDVIEW	OH	167
				056331	BENS RUN	WV	073
				284927	GRANDVIEW	OH	167
				056331	BENS RUN	WV	095
				292584	GROUNDHOG CREEK	OH	105
				292584	GROUNDHOG CREEK	WV	035
				292584	GROUNDHOG CREEK	OH	105
				602752	RIPLEY NORTH	WV	035
				315775	HENDERSHOT	OH	167
				077064	BOAZ	WV	107
				407104	LEBANON	OH	105
				502510	NEPTUNE	WV	035
				420644	LIVERPOOL EAST	OH	029
				136565	CHESTER-PUGHTOWN	WV	029
				430875	LOWER NEWPORT	OH	167
				077064	BOAZ	WV	107
				NEW MEXICO 10 & TEXAS 80			
043752	BATTLEAXE	NM10	025				
043752	BATTLEAXE	TX80	301				
195898	DOLLARHIDE	NM10	025				
195898	DOLLARHIDE	TX80	003				
216935	EL MAR	NM10	025				
216935	EL MAR	TX80	301				
353905	JALMAT	NM10	025				
636880	SCARBOROUGH	TX80	495				
420117	LITTMAN	NM10	025				
420117	LITTMAN	TX80	003				
451470	MASON NORTH	NM10	015				
451470	MASON NORTH	TX80	301				
451470	MASON NORTH	NM10	025				
451470	MASON NORTH	TX80	301				
590026	RED BLUFF	NM10	015				
590026	RED BLUFF	TX80	301				
636880	SCARBOROUGH	NM10	025				
636880	SCARBOROUGH	TX80	495				
677662	STATELINE	NM10	025				
677662	STATELINE	TX80	003				
				NEW MEXICO 10 & TEXAS 85			
093727	BRONCO	NM10	025				
093727	BRONCO	TX85	501				

Table 6. Fields Located in Multiple Jurisdictions (Continued)

Field Code	Field Name	State Sub	County Code	Field Code	Field Name	State Sub	County Code
005882	MILE RUN	OH	167	121862	CARSON	PA	007
077064	BOAZ	WV	107	267324	GAS VALLEY	WV	029
005906	MOORES JUNCTION	OH	167	241424	FINLEY WEST	PA	059
077064	BOAZ	WV	107	441705	MAJORSVILLE	WV	051
005945	NEWELL RUN	OH	167	241424	FINLEY WEST	PA	125
674345	ST MARYS	WV	073	441705	MAJORSVILLE	WV	051
005968	OLIVE-MEIGS	OH	105	266518	GARRISON	PA	059
503688	NEW ENGLAND	WV	107	325192	HIXENBAUGH (CAPPO RUN)	WV	103
005980	PATTON RUN	OH	013	007381	HOOVERS RUN	PA	059
276711	GLENN RUN	WV	069	089511	BRAVE	WV	061
006036	PROCTORVILLE	OH	087	007381	HOOVERS RUN	PA	059
340105	HUNTINGTON	WV	011	445595	MAPLE-WADESTOWN	WV	061
006036	PROCTORVILLE	OH	087	374107	KENDALL	PA	007
340105	HUNTINGTON	WV	099	721803	TURKEYFOOT	WV	029
575633	PUTNAM	OH	009	458484	MCCRACKEN	PA	059
503688	NEW ENGLAND	WV	107	004358	CAMERON-KAUSOOTH	WV	051
006417	SHEETS RUN	OH	167	458484	MCCRACKEN	PA	059
056331	BENS RUN	WV	073	608868	ROCKPORT	WV	051
006417	SHEETS RUN	OH	167	489029	MOUNT MORRIS	PA	059
056331	BENS RUN	WV	095	124404	CASSVILLE-BOWLBY	WV	061
658139	SISTERSVILLE	OH	111	489029	MOUNT MORRIS	PA	059
658139	SISTERSVILLE	WV	095	234157	FAIRVIEW-STATLER RUN-MT MO	WV	061
691364	SUTTON	OH	105	503770	NEW FREEPORT	PA	059
503998	NEW HAVEN	WV	053	054502	BELLTON	WV	051
OKLAHOMA & TEXAS 90				503770	NEW FREEPORT	PA	059
302824	HANDY SE	OK	095	004358	CAMERON-KAUSOOTH	WV	051
302824	HANDY SE	TX90	181	503770	NEW FREEPORT	PA	059
641879	SEAY	OK	067	607597	ROCK CAMP	WV	103
482395	MONTAGUE COUNTY REGULAR	TX90	337	007450	POINT MARION	PA	059
658325	SIVELLS BEND	OK	085	124404	CASSVILLE-BOWLBY	WV	061
658325	SIVELLS BEND	TX90	097	598846	RICH HILL	PA	059
OKLAHOMA & TEXAS 95				441705	MAJORSVILLE	WV	051
036467	BALKO SOUTH	OK	007	007331	SHANNON RUN	PA	059
011479	ALLEN-PARKER	TX95	357	484038	MOORESVILLE	WV	061
116065	CAMRICK DISTRICT	OK	007	662890	SMITHS FERRY	PA	007
551389	PERRYTON NORTH	TX95	357	662890	SMITHS FERRY	WV	029
291499	GRIGGS SOUTH	OK	025	721514	TURKEY FOOT	PA	125
365433	JUDD	TX95	421	721803	TURKEYFOOT	WV	029
295669	GUYMON SOUTH	OK	139	765353	WHITELY CREEK	PA	059
324944	HITCHLAND WEST	TX95	195	124404	CASSVILLE-BOWLBY	WV	061
295545	GUYMON-HUGOTON GAS AREA	OK	139	TEXAS 00 & TEXAS 05			
000333	TEXAS HUGOTON	TX95	195	805437	BRAZOS BLK 437	TX00	995
295545	GUYMON-HUGOTON GAS AREA	OK	139	805438	BRAZOS BLK 438	TX05	990
000333	TEXAS HUGOTON	TX95	421	848022	HIGH ISLAND BLK 22	TX00	995
321565	HIGGINS SOUTH	OK	045	006222	BLOCK 23L	TX05	990
321565	HIGGINS SOUTH	TX95	211	873519	MATAGORDA ISLAND BLK 519	TX00	995
321565	HIGGINS SOUTH	OK	045	873519	MATAGORDA ISLAND BLK 519	TX05	990
321565	HIGGINS SOUTH	TX95	295	873527	MATAGORDA ISLAND BLK 527	TX00	995
350269	IVANHOE	OK	007	126721	CAVALLO	TX05	990
247567	FOLLETT	TX95	295	UTAH & WYOMING			
423001	LOGAN SOUTH	OK	007	002380	ANSCHUTZ RANCH EAST	UT	043
247567	FOLLETT	TX95	295	002380	ANSCHUTZ RANCH EAST	WY	041
455562	MAYFIELD WEST	OK	009	VIRGINIA & WEST VIRGINIA			
475752	MILLS RANCH	TX95	483	008387	BERWIND	VA	185
480070	MOCANE-LAVERNE GAS AREA	OK	007	061408	BIG CREEK	WV	047
247567	FOLLETT	TX95	295	277145	GLICK	VA	027
PENNSYLVANIA & WEST VIRGINIA				004501	ROCKRIDGE	WV	047
007281	ASHTREE	PA	059	008403	HURLEY	VA	027
445595	MAPLE-WADESTOWN	WV	061	271983	GILBERT	WV	059

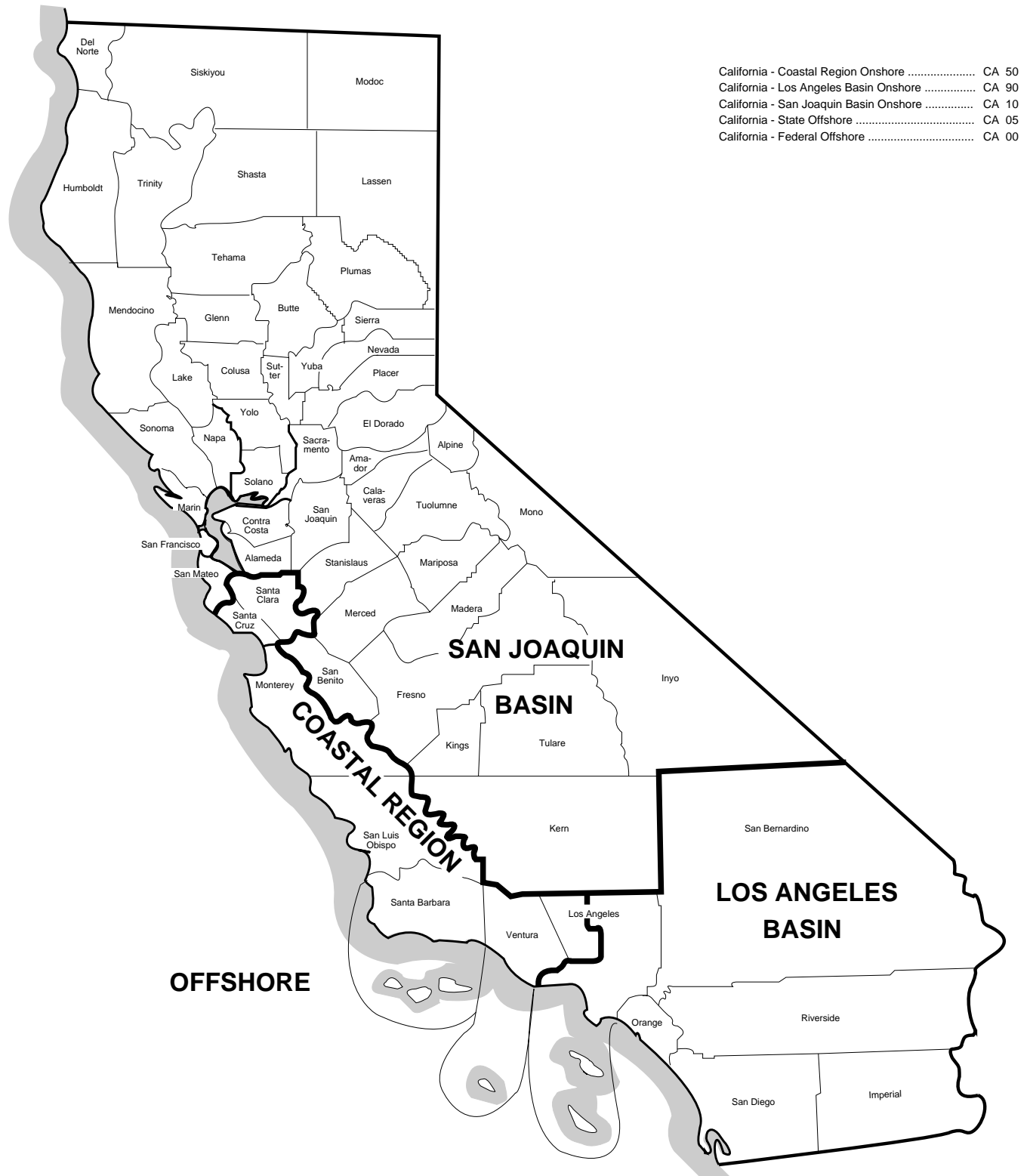
Source: Energy Information Administration, Office of Oil and Gas.

Figure 3. Subdivisions of Alaska and U.S. Geological Survey Quadrangles



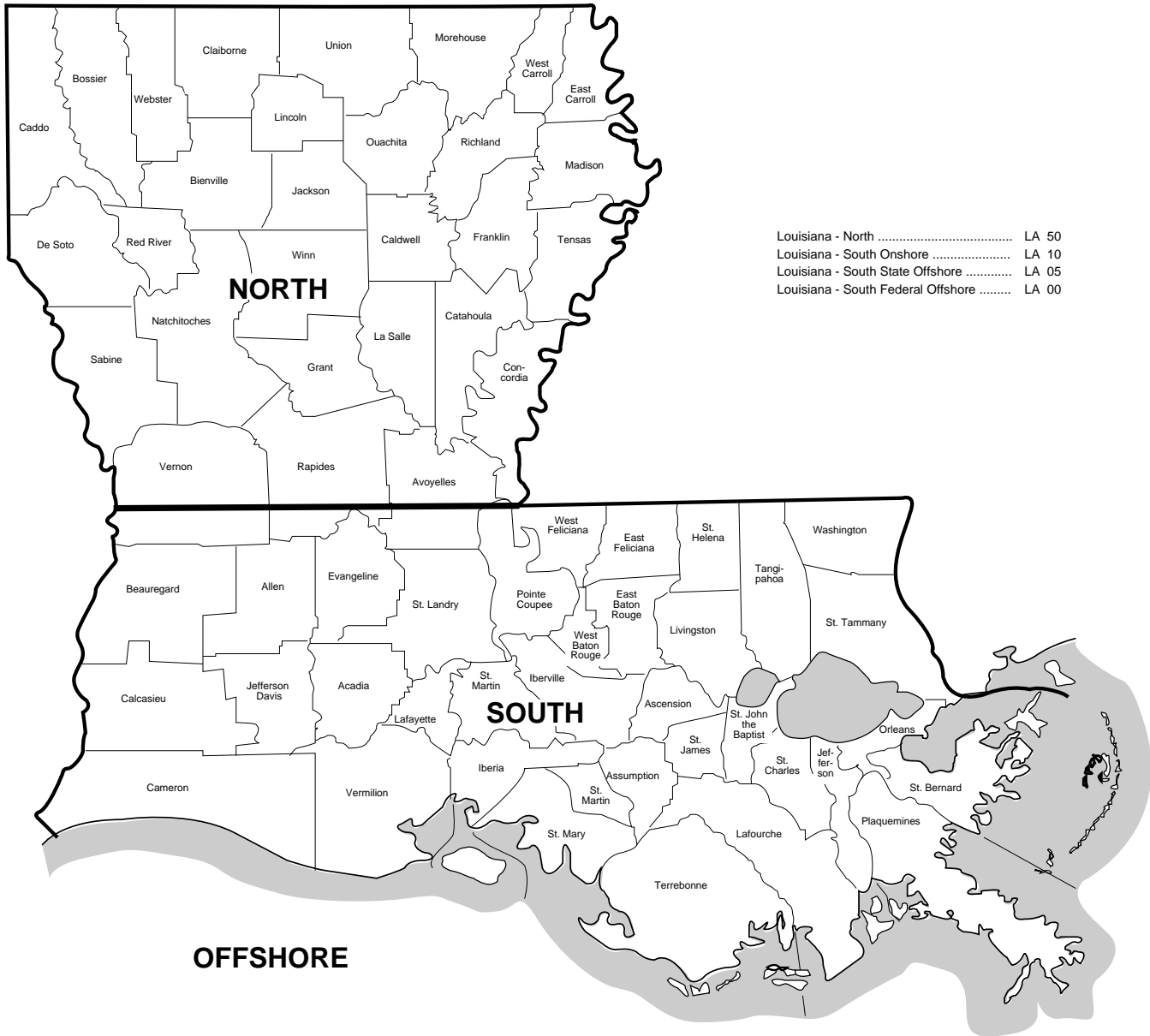
Source: After U.S. Geological Survey.

Figure 4. Subdivisions of California



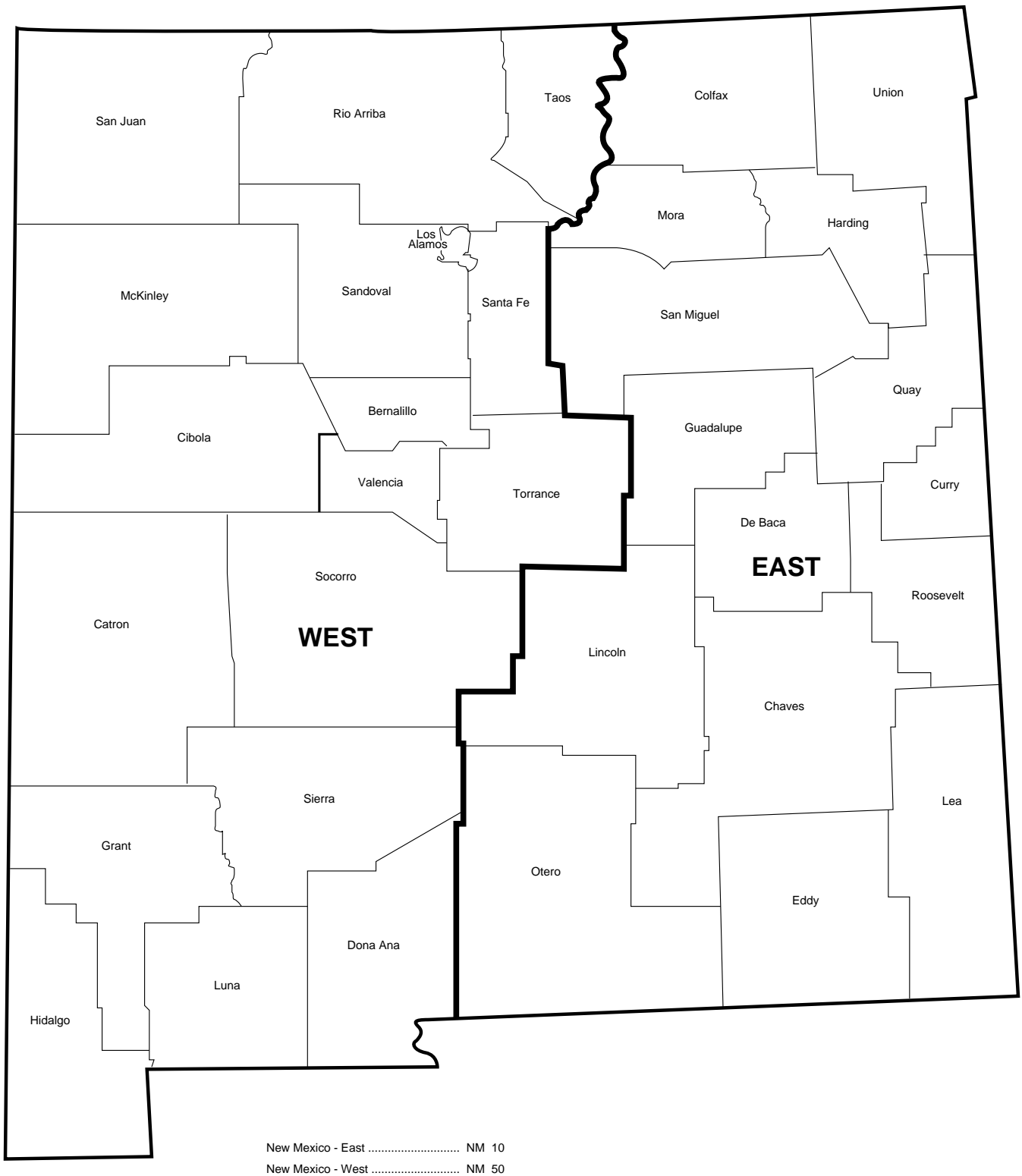
Source: Energy Information Administration, Office of Oil and Gas.

Figure 5. Subdivisions of Louisiana



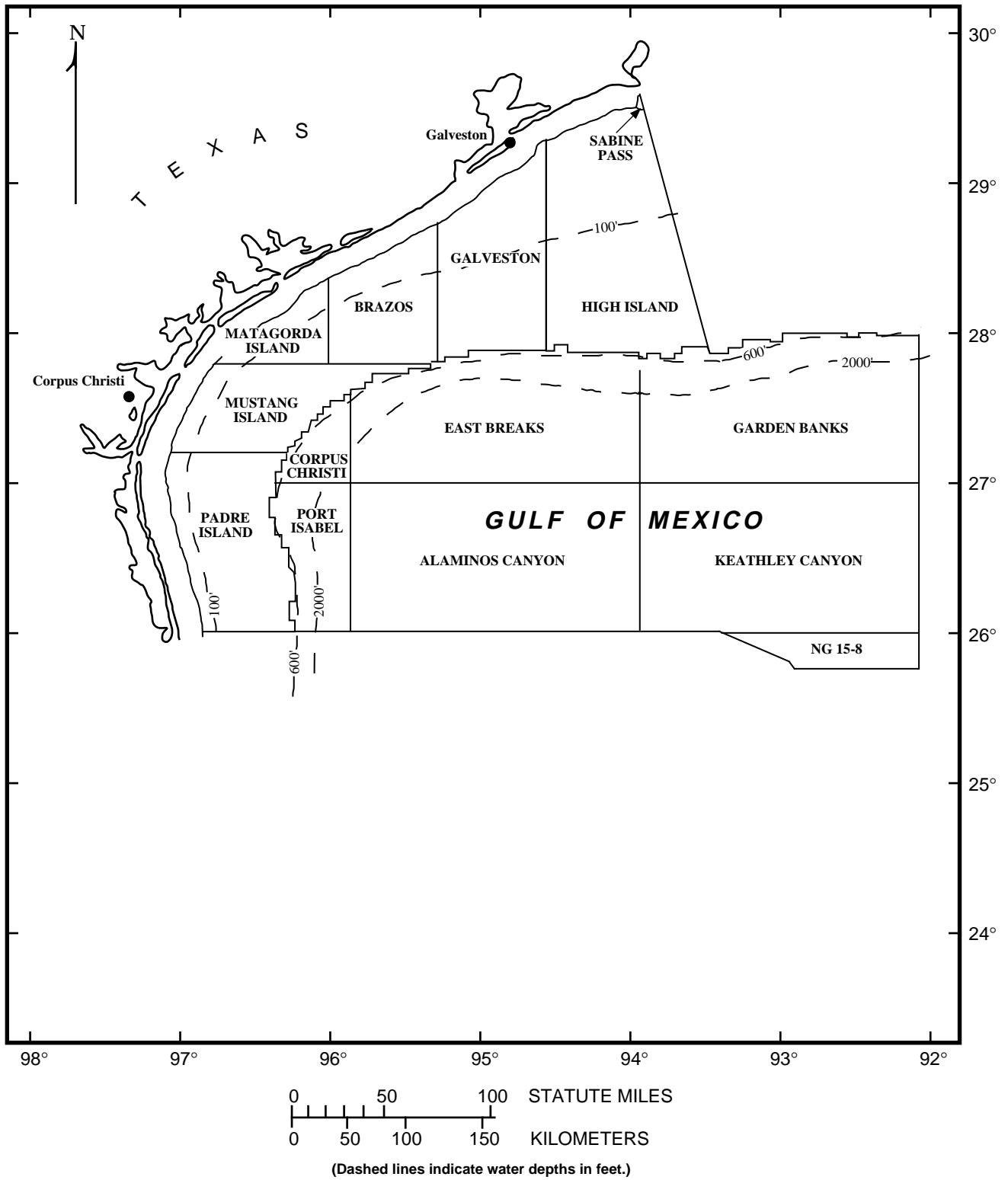
Source: Energy Information Administration, Office of Oil and Gas.

Figure 6. Subdivisions of Mew Mexico



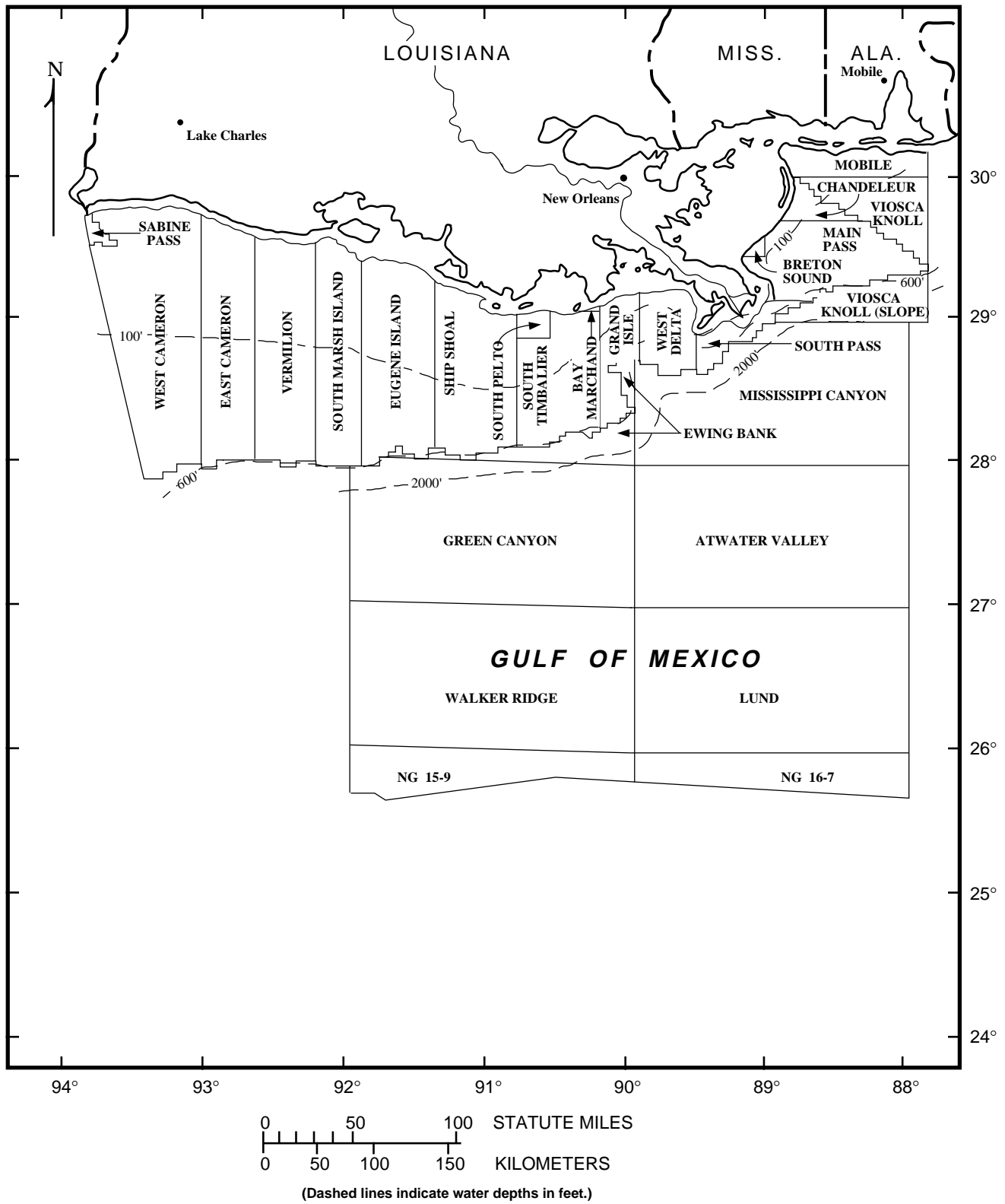
Source: Energy Information Administration, Office of Oil and Gas.

Figure 8. Western Planning Area, Gulf of Mexico Outer Continental Shelf Region



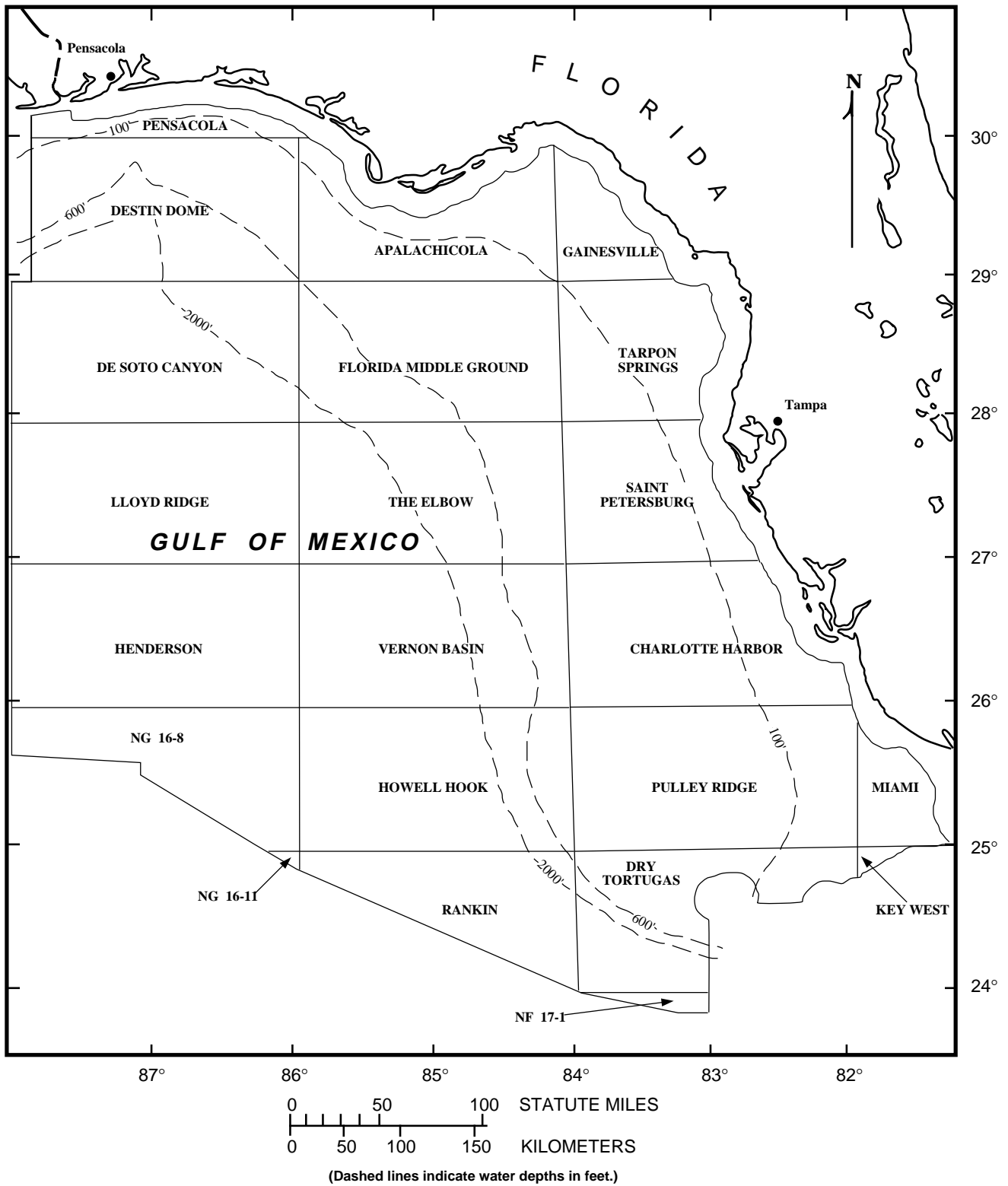
Source: After Minerals Management Service, U.S. Department of the Interior.

Figure 9. Central Planning Area, Gulf of Mexico Outer Continental Shelf Region



Source: After Minerals Management Service, U.S. Department of the Interior

Figure 10. Eastern Planning Area, Gulf of Mexico Outer Continental Shelf Region



Source: After Minerals Management Service, U.S. Department of the Interior.

Glossary

This Glossary defines many of the technical terms used in this report.

Crude Oil: A mixture of hydrocarbons that exist in the liquid phase in natural underground reservoirs and remain liquid at atmospheric pressure after passing through surface separating facilities. Crude oil may also include:

- Small amounts of hydrocarbons that exist in the gaseous phase in natural underground reservoirs but are liquid at atmospheric pressure after being recovered from oil well (casinghead) gas in lease separators, and that subsequently are commingled with the crude stream without being separately measured.
- Small amounts of nonhydrocarbons produced with the oil.

Field: An area consisting of a single reservoir or multiple reservoirs all grouped on or related to the same individual geological structural feature and/or stratigraphic condition. There may be two or more reservoirs in a field which are separated vertically by intervening impervious strata, or laterally by local geologic barriers, or by both. (See **Reservoir**)

Field Area: A geographic area encompassing two or more pools that have a common gathering and metering system, the reserves of which are reported as a single unit. This concept applies primarily to the Appalachian region. (See **Pool**)

Field Discovery Year: The calendar year in which a field was first recognized as containing economically recoverable accumulations of oil and/or gas.

Natural Gas: A mixture of hydrocarbon compounds and small quantities of various nonhydrocarbons existing in the gaseous phase or in solution with crude oil in natural underground reservoirs at reservoir conditions. The principal hydrocarbons usually contained in the mixture are methane, ethane, propane, butane, and pentane. Typical nonhydrocarbon gases which may be present in reservoir natural gas are carbon dioxide, helium, hydrogen sulfide, and nitrogen. Under reservoir conditions, natural gas and the liquefiable portions occur either in a single gaseous phase in the reservoir or in solution with crude oil and are not distinguishable at the time as separate substances.

Pool: In general, a reservoir. In certain situations a pool may consist of more than one reservoir. (See **Field Area**)

Reservoir: A porous and permeable underground formation containing an individual and separate natural accumulation of producible hydrocarbons (oil and/or gas) which is confined by impermeable rock or water barriers and is characterized by a single natural pressure system.

Subdivision: A prescribed portion of a given State or other geographical region defined in this publication for statistical reporting purposes.

**Oil and Gas Field Code
Master List Updates**

ALABAMA

KANSAS

Field Code	Field Name/ Alias/Remarks	State/ Sub	Co Code	County	Disc Year	Field Type	Field Code	Field Name/ Alias/Remarks	State/ Sub	Co Code	County	Disc Year	Field Type
Alabama													
015368	Barron Point	AL	053	Offshore-State	1995	N	013711	Altair	KS	193	Thomas	1995	O
014439	Chitterling Creek	AL	053	Escambia	1993	OA	011900	Angman	KS	175	Seward	1988	ON
015454	Driver Creek	AL	075	Lamar	1995	N	008030	Arkalon NE	KS	175	Seward		
015455	East Mississippi Sound	AL	053	Offshore-State	1995	N		Alias for: (001971) Arkalon North [COMB]					
015389	Excel SW	AL	099	Monroe	1995	OA	001971	Arkalon North	KS	175	Seward	1980	ON
015458	Goose Bayou	AL	053	Offshore-State	1995	N	040931	Barry West	KS	163	Rooks		
015456	Gravel Hill Church	AL	053	Escambia	1995	O		Alias for: (754542) Webster [COMB]					
014959	Horseneck Creek	AL	003	Baldwin	1994	OA	041489	Bartlett	KS	099	Labette	1944	O
015457	Jones Mill	AL	099	Monroe	1995	O		ABD,REV 12/89					
418133	Little Cedar Creek	AL	035	Conocuh	1995	O	015479	Beck East	KS	155	Reno	1996	O
467079	Melvin	AL	023	Choctaw	1977	OA	074227	Bloomer	KS	009	Barton	1933	O
015402	Melvin NE	AL	023	Choctaw	1995	OA	074258	Bloomer East	KS	053	Ellsworth		
606357	Robinson Creek	AL	053	Escambia	1990	OA		Alias for: (386819) Kraft-Prusa [COMB]					
Arkansas													
146253	Clay	AR	145	White	1995	N	085806	Boyer	KS	015	Butler	1916	N
176333	Cypress	AR	027	Columbia	1996	N	090720	Brehm	KS	151	Pratt	1961	ON
015461	Lapile East	AR	139	Union	1995	O		STOR					
676050	Stamps NW	AR	073	Lafayette	1952	O	090844	Brenham	KS	097	Kiowa	1947	O
015460	Stateline SW	AR	139	Union	1995	O		ABD 58,REV 96					
California													
015361	Ash Slough	CA	019	Fresno	1992	N	093293	Broadway	KS	095	Kingman	1950	ON
015361	Ash Slough	CA	039	Madera	1992	N	015437	Buckner NE	KS	065	Graham	1996	O
015612	Everglade	CA	101	Sutter	1994	N	015442	Butterfield-Overland	KS	063	Gove	1996	O
015404	Mint Road	CA	047	Merced	1995	N	015448	Caldwell Townsite	KS	191	Sumner	1996	O
Colorado													
015599	Abundance	CO	123	Weld	1995	O	113988	Calvert	KS	051	Ellis	1996	O
015600	Dagger	CO	005	Arapahoe	1995	O	118793	Capitol View	KS	009	Barton	1950	O
015601	Deep Pockets	CO	005	Arapahoe	1995	O	121738	Carroll North	KS	009	Barton		
015603	Elephant	CO	061	Kiowa	1995	N		Alias for: (118793) Capitol View [COMB]					
334741	House Creek	CO	083	Montezuma	1961	N	015380	Cash City NE	KS	025	Clark	1995	N
	STOR(65)ABD						134364	Chase	KS	159	Rice		
015604	Indian Bead	CO	017	Cheyenne	1995	O		Alias for: (134395) Chase-Silica [COMB]					
015605	Kokopelli	CO	045	Garfield	1995	N	134395	Chase-Silica	KS	159	Rice	1929	ON
015606	Longs Peak	CO	123	Weld	1995	O	015107	Cheyenne Gap	KS	141	Osborne		
015598	Prosperity	CO	087	Morgan	1995	N		Alias for: (014859) Sigle North [COMB]					
015459	Rockies	CO	121	Washington	1995	O	015473	Colter West	KS	033	Comanche	1996	O
015607	Saddlebag	CO	071	Las Animas	1995	N	158638	Converse	KS	009	Barton	1941	ON
015608	Skipping Stone	CO	043	Fremont	1995	O	191797	Diebolt	KS	195	Trego	1953	O
015609	Spanish Peaks	CO	071	Las Animas	1995	N	015480	Dripping Springs NE	KS	065	Graham	1991	O
015610	Tierra Plano	CO	125	Yuma	1995	N	015481	Dunham East	KS	069	Gray	1996	N
787893	Young	CO	087	Morgan	1957	N	208873	Dyal	KS	191	Sumner		
Illinois													
009702	C & H	IL	199	Williamson				Alias for: (494579) Murphy [COMB]					
	STOR ABD						219663	Elkhart	KS	129	Morton	1955	ON
130225	Centralia	IL	121	Marion	1937	O	248714	Forest Hill	KS	167	Russell		
	STOR							Alias for: (300034) Hall-Gurney [COMB]					
213408	Eden	IL	157	Randolph	1962	N	015438	Fowler NE	KS	119	Meade	1996	N
	STOR						004332	Garey	KS	185	Stafford	1980	O
218299	Elbridge	IL	045	Edgar	1949	O	280292	Goodrich-Parker	KS	003	Anderson	1922	ON
	STOR(66)AQF ABD						280292	Goodrich-Parker	KS	107	Linn	1922	ON
323394	Hillsboro	IL	135	Montgomery	1962	O	289763	Greenwalt East	KS	165	Rush	1965	ON
	STOR(74)AQF						300034	Hall-Gurney	KS	167	Russell	1931	ONA
414351	Lincoln	IL	107	Logan			015449	Hansen Estate NE	KS	137	Norton	1996	O
	STOR(74)AQF						317697	Herbert	KS	051	Ellis	1958	O
502975	Nevins	IL	045	Edgar			015441	Herbert SE	KS	051	Ellis		
	STOR(65)AQF ABD							Alias for: (317697) Herbert [COMB]					
546894	Pecatonica	IL	201	Winnebago			324696	Hiss SW	KS	009	Barton	1945	O
	STOR(69)AQF						324727	Hiss West	KS	009	Barton		
600179	Richwood	IL	033	Crawford	1959	N		Alias for: (324696) Hiss SW [COMB]					
	STOR(66)ABD						327301	Holcomb	KS	055	Finney		
639732	Sciota	IL	109	McDonough	1960	O		Alias for: (337780) Hugoton Gas Area [COMB]					
	STOR(75)AQF						337780	Hugoton Gas Area	KS	055	Finney	1922	ON
722733	Tuscola	IL	019	Champaign			014650	Joy Station West	KS	097	Kiowa	1993	ON
	STOR(54)AQF						015439	Kingsdowne West	KS	057	Ford	1996	N
Indiana													
015486	Ash Iron Springs East	IN	173	Warrick	1995	N	386819	Kraft-Prusa	KS	053	Ellsworth	1937	ON
015487	Bruceville South	IN	083	Knox	1995	N	412668	Lexington South	KS	025	Clark	1979	N
131558	Chambersburg	IN	117	Orange	1995	N	426318	Longton	KS	019	Chautauqua		
163257	Corydon North	IN	061	Harrison	1995	N		STOR ABD					
015488	Curby	IN	025	Crawford	1995	N	457616	McClintock	KS	159	Rice	1962	ON
276432	Glendale	IN	027	Daviess	1929	N	463545	Meade	KS	119	Meade	1976	ON
	STOR						465126	Medicine Lodge West	KS	007	Barber		
015489	Heltonville West	IN	093	Lawrence	1995	N		Alias for: (465002) Medicine Lodge-Boggs [COMB]					
340074	Huntingburg South	IN	037	Dubois	1953	O	465002	Medicine Lodge-Boggs	KS	007	Barber	1927	ON
	STOR						015482	Menlo Park	KS	193	Thomas	1996	O
015490	Laconia West	IN	061	Harrison	1995	N	480371	Mod	KS	137	Norton	1980	O
416304	Linton	IN	055	Greene	1952	N	015405	Mod East	KS	137	Norton	1995	O
	STOR(61)AQF ABD						015406	Modoc	KS	171	Scott	1995	O
472745	Midway	IN	147	Spencer			015483	Mont Ida	KS	003	Anderson	1996	O
	Alias for: (472760) Midway Consol [RENAM]						015408	Monument SW	KS	109	Logan	1995	O
472760	Midway Consol	IN	147	Spencer	1949	ON	015409	Monument West	KS	109	Logan	1996	O
	STOR(66)						484069	Moorhouse	KS	095	Kingman		
482829	Montezuma	IN	165	Vermillion	1956	O		Alias for: (093293) Broadway [COMB]					
519883	Odon East	IN	027	Daviess	1952	ON	485061	Morgan	KS	193	Thomas	1995	O
	STOR AQF						485991	Morrison	KS	025	Clark	1926	ON
015491	Popcorn	IN	093	Lawrence	1995	N	494579	Murphy	KS	191	Sumner	1926	ON
585352	Ramsey South	IN	061	Harrison	1995	N	015445	Natoma Townsite	KS	141	Osborne	1979	O
015492	Syria	IN	117	Orange	1995	N	506137	Newell	KS	185	Stafford	1953	ON
728448	Unionport	IN	135	Randolph			507680	Nichols South	KS	097	Kiowa		
	STOR AQF							Alias for: (009557) Alford [COMB]					
728572	Unionville	IN	105	Monroe	1928	ON	513889	Novinger East	KS	119	Meade	1957	ON
	STOR(54)AQF						527063	Orange J	KS	055	Finney	1973	O
761207	Westpoint	IN	157	Tippecanoe			015452	Orange J NE	KS	055	Finney	1985	O
	STOR AQF						530183	Oswego	KS	099	Labette	1920	N
776143	Wolcott	IN	181	White				ABD,REV 9/96					
Kansas													
015477	Albear	KS	193	Thomas	1996	O	015474	Oswego NW	KS	099	Labette	1977	N
007929	Albion South	KS	155	Reno			015436	Oswego West	KS	099	Labette		
008441	Alden	KS	159	Rice	1937	O	544731	Pawnee Rock East	KS	009	Barton		
	STOR							Alias for: (158638) Converse [COMB]					
009557	Alford	KS	097	Kiowa	1944	ONA	015414	Pendennis NW	KS	101	Lane	1996	O
							566805	Porter North	KS	049	Elk	1996	O
							015453	Reeve North	KS	055	Finney		
								Alias for: (527063) Orange J [COMB]					
							015450	Reeves Ranch	KS	055	Finney	1996	O
							015443	Rovohl</					

KANSAS

Field Code	Field Name/ Alias/Remarks	State/ Sub	Co Code	County	Disc Year	Field Type	Field Code	Field Name/ Alias/Remarks	State/ Sub	Co Code	County	Disc Year	Field Type
654140	<i>Shrauner</i> Alias for: (219663) Elkhart [COMB]	KS	129	Morton			015647	Inez South Cons DBS	KY	159	Martin	1900	N
014859	Sigle North	KS	141	Osborne	1994	O	015690	<i>Inez South DBS</i> Alias for: (015647) Inez South Cons DBS [COMB]	KY	159	Martin		
015484	Sigle NW	KS	141	Osborne	1996	O	015649	<i>Ivel DBS</i> Alias for: (015621) Allen City Cons DBS [COMB]	KY	071	Floyd		
015476	Silverman North	KS	175	Seward	1996	N	015648	Jack Branch Cons	KY	051	Clay	1972	N
658232	Sittner	KS	185	Stafford	1937	O	015650	Jude Fork Cons DBS	KY	159	Martin	1927	N
658263	<i>Sittner South</i> Alias for: (658232) Sittner [COMB]	KS	185	Stafford			015650	Jude Fork Cons DBS	KY	195	Pike	1927	N
663479	Snake Creek	KS	025	Clark	1952	ON	015691	<i>Jude Fork DBS</i> Alias for: (015650) Jude Fork Cons DBS [COMB]	KY	159	Martin		
663603	<i>Snake Creek SW</i> Alias for: (663479) Snake Creek [COMB]	KS	025	Clark			015691	<i>Jude Fork DBS</i> Alias for: (015650) Jude Fork Cons DBS [COMB]	KY	195	Pike		
692209	Sweeney	KS	145	Pawnee	1947	ON	365557	<i>Judges Chapel</i> Alias for: (305056) Hardeson Consol [COMB]	KY	047	Christian		
708502	Timber Creek	KS	165	Rush	1994	ON	015652	Keel Fork Cons DBS	KY	071	Floyd	1925	N
015424	Tonn	KS	155	Reno	1930	O	015653	<i>Keel Fork DBS</i> Alias for: (015652) Keel Fork Cons DBS [COMB]	KY	071	Floyd		
737061	Vestal	KS	035	Cowley	1927	ON	015399	Kimper DBS	KY	195	Pike	1942	N
745187	<i>Wakeeney NW</i> Alias for: (191797) Diebolt [COMB]	KS	195	Trego			015654	Lancer South Cons DBS	KY	071	Floyd	1917	N
754542	Webster	KS	163	Rooks	1930	O	015655	<i>Lancer South DBS</i> Alias for: (015654) Lancer South Cons DBS [COMB]	KY	071	Floyd		
761373	Wethington	KS	077	Harper	1972	ON	015656	<i>Laura DBS</i> Alias for: (015650) Jude Fork Cons DBS [COMB]	KY	159	Martin		
768477	Wilde	KS	127	Morris	1926	ON	015574	Little Robinson Creek	KY	125	Laurel	1996	N
768486	<i>Wilde NW</i> Alias for: (768477) Wilde [COMB]	KS	127	Morris			015657	<i>Lost Creek Chapel DBS</i> Alias for: (015750) Bulan Cons DBS [COMB]	KY	193	Perry		
015485	Wilsey NE	KS	127	Morris	1996	N	015693	Lynn Bark Cons DBS	KY	159	Martin	1931	ON
015431	Winter East	KS	129	Morton	1995	N	015692	<i>Lynn Bark North DBS</i> Alias for: (015693) Lynn Bark Cons DBS [COMB]	KY	159	Martin		
015432	Yorklaw	KS	033	Comanche	1962	N	015754	<i>Lynn Bark School DBS</i> Alias for: (015693) Lynn Bark Cons DBS [COMB]	KY	159	Martin		
015433	Youngren North	KS	189	Stevens	1996	N	015658	<i>Mare Creek School DBS</i> Alias for: (015626) Blairtown Cons DBS [COMB]	KY	071	Floyd		
Kentucky													
015621	Allen City Cons DBS	KY	071	Floyd	1927	N	015658	<i>Mare Creek School DBS</i> Alias for: (015626) Blairtown Cons DBS [COMB]	KY	195	Pike		
015622	Alvin Cons DBS	KY	071	Floyd	1924	N	015658	<i>Mare Creek School DBS</i> Alias for: (015626) Blairtown Cons DBS [COMB]	KY	159	Martin		
015623	<i>Alvin North DBS</i> Alias for: (015622) Alvin Cons DBS [COMB]	KY	071	Floyd			015694	<i>Meade Branch DBS</i> Alias for: (015671) Warfield Cons DBS [COMB]	KY	159	Martin		
015624	<i>Alvin West DBS</i> Alias for: (015622) Alvin Cons DBS [COMB]	KY	071	Floyd			015660	Mildred Cons	KY	109	Jackson	1988	N
015625	<i>Amburgey SW DBS</i> Alias for: (015672) Wiscoal Cons DBS [COMB]	KY	119	Knott			532074	Owensboro STOR	KY	059	Daviess	1922	N
036808	Ballardsville STOR(64)ABD	KY	185	Oldham	1931	N	015661	Pigeon Roost Cons	KY	051	Clay	1984	N
015715	<i>Banner South DBS</i> Alias for: (015621) Allen City Cons DBS [COMB]	KY	071	Floyd			012033	Pigeon West DBS	KY	071	Floyd	1933	N
015716	<i>Beaver Creek DBS</i> Alias for: (015641) Garrett Cons DBS [COMB]	KY	071	Floyd			015575	Poplar Creek	KY	235	Whitley	1993	N
015716	<i>Beaver Creek DBS</i> Alias for: (015641) Garrett Cons DBS [COMB]	KY	119	Knott			015699	<i>Preece DBS</i> Alias for: (015638) Farley Church Cons DBS [COMB]	KY	159	Martin		
015626	Blairtown Cons DBS	KY	071	Floyd	1931	ON	573734	Providence South	KY	107	Hopkins	1965	ON
015626	Blairtown Cons DBS	KY	195	Pike	1931	ON	015662	Puncheon Camp Cons	KY	153	Magoffin	1924	ON
015717	<i>Brainard DBS</i> Alias for: (015631) Dotson Cons DBS [COMB]	KY	071	Floyd			015663	<i>Ritchie West DBS</i> Alias for: (015750) Bulan Cons DBS [COMB]	KY	193	Perry		
015628	<i>Bulan</i> Alias for: (015750) Bulan Cons DBS [COMB]	KY	193	Perry			015576	Shockey Fork	KY	237	Wolfe	1995	N
015750	Bulan Cons DBS	KY	193	Perry	1955	ON	015696	<i>Short Branch DBS</i> Alias for: (015627) Carrie Cons DBS [COMB]	KY	119	Knott		
015718	<i>Bull Creek Church DBS</i> Alias for: (015654) Lancer South Cons DBS [COMB]	KY	071	Floyd			660441	<i>Slaughters East</i> Alias for: (013160) Slaughters East Consol [RENAM]	KY	107	Hopkins		
115569	<i>Campbell Church</i> Alias for: (012134) Campbell Church Consol [RENAM]	KY	121	Knox			013160	Slaughters East Consol	KY	107	Hopkins	1963	ON
012134	Campbell Church Consol	KY	121	Knox	1932	N	015665	Sloan Cons DBS	KY	071	Floyd	1930	N
009704	Canmer STOR(71)ABD	KY	099	Hart	1960	N	015666	<i>Sloan DBS</i> Alias for: (015665) Sloan Cons DBS [COMB]	KY	071	Floyd		
015627	Carrie Cons DBS	KY	119	Knott	1929	N	015667	Thomas Cons DBS	KY	071	Floyd	1941	N
015720	<i>Carrie DBS</i> Alias for: (015627) Carrie Cons DBS [COMB]	KY	119	Knott			015667	Thomas Cons DBS	KY	159	Martin	1941	N
004841	Cecilia STOR(72)AQF	KY	093	Hardin	1967	N	015667	Thomas Cons DBS	KY	195	Pike	1941	N
015721	<i>Conley School DBS</i> Alias for: (015652) Keel Fork Cons DBS [COMB]	KY	071	Floyd			015697	<i>Thomas DBS</i> Alias for: (015667) Thomas Cons DBS [COMB]	KY	195	Pike		
015629	Davisport Cons DBS	KY	115	Johnson	1941	N	015670	Van Lear Cons DBS	KY	115	Johnson	1945	N
015629	Davisport Cons DBS	KY	159	Martin	1941	N	015698	<i>Van Lear DBS</i> Alias for: (015670) Van Lear Cons DBS [COMB]	KY	115	Johnson		
015684	<i>Davisport North DBS</i> Alias for: (015629) Davisport Cons DBS [COMB]	KY	159	Martin			015671	Warfield Cons DBS	KY	159	Martin	1899	N
015685	<i>Davisport West DBS</i> Alias for: (015629) Davisport Cons DBS [COMB]	KY	159	Martin			015674	<i>Warfield DBS</i> Alias for: (015671) Warfield Cons DBS [COMB]	KY	159	Martin		
194968	Doe Run STOR(62)ABD	KY	163	Meade	1900	ON	764540	White Plains STOR ABD	KY	107	Hopkins	1962	ON
015631	Dotson Cons DBS	KY	071	Floyd	1918	ON	015672	Wiscoal Cons DBS	KY	119	Knott	1934	N
015686	<i>Dotson DBS</i> Alias for: (015631) Dotson Cons DBS [COMB]	KY	071	Floyd			015672	Wiscoal Cons DBS	KY	193	Perry	1934	N
015632	Dow Cons DBS	KY	193	Perry	1964	N	013953	<i>Wiscoal DBS</i> Alias for: (015672) Wiscoal Cons DBS [COMB]	KY	119	Knott		
015634	<i>Dow DBS</i> Alias for: (015632) Dow Cons DBS [COMB]	KY	193	Perry			Louisiana						
015635	<i>Dunkard Church DBS</i> Alias for: (015650) Jude Fork Cons DBS [COMB]	KY	195	Pike			015369	Bayou Rapides	LA	079	Rapides	1995	OA
210463	Eagle Creek STOR(63)ABD	KY	077	Gallatin	1963	N	015370	Beech Grove Plantation	LA	10	East Feliciana	1995	N
015636	Elna Cons	KY	115	Johnson	1921	O	114081	Calvin	LA	50	Winn	1942	N
015638	Farley Church Cons DBS	KY	159	Martin	1900	ON	829018	Eugene Island Blk 18	LA	05	Offshore-State	1954	ONA
015687	<i>Farley Church DBS</i> Alias for: (015638) Farley Church Cons DBS [COMB]	KY	159	Martin			015390	Glenmora South	LA	10	Evangeline	1995	N
015688	<i>Farley Church West DBS</i> Alias for: (015638) Farley Church Cons DBS [COMB]	KY	159	Martin			015400	Lake Rosemond NE	LA	10	West Feliciana	1994	N
015568	Flippins Run	KY	163	Meade	1996	N	866077	Main Pass Blk 77 PBI 866074	LA	05	Offshore-State	1980	ONA
015639	<i>Fuget</i> Alias for: (015636) Elna Cons [COMB]	KY	115	Johnson			015411	Myette Point NW	LA	101	St Mary	1995	OA
015641	Garrett Cons DBS	KY	071	Floyd	1892	ON	909034	South Pass Blk 34	LA	05	Offshore-State	1996	N
015641	Garrett Cons DBS	KY	119	Knott	1892	ON	Michigan						
015643	<i>Garrett DBS</i> Alias for: (015641) Garrett Cons DBS [COMB]	KY	071	Floyd			007914	Albion-Pulaski-Scipio-Trnd	MI	025	Calhoun	1957	ONA
015643	<i>Garrett DBS</i> Alias for: (015641) Garrett Cons DBS [COMB]	KY	119	Knott			002837	Blue Lake 18-28N-5W A STOR	MI	079	Kalkaska	1977	N
015643	<i>Garrett DBS</i> Alias for: (015641) Garrett Cons DBS [COMB]	KY	119	Knott			015462	Byers North	MI	107	Mecosta	1995	N
015569	Glens Fork	KY	001	Adair	1993	O	112562	<i>Cal-Lee</i> Alias for: (007914) Albion-Pulaski-Scipio-Trnd [COMB]	MI	025	Calhoun		
015570	Goblin Knob	KY	061	Edmonson	1995	O	009710	Clarence 19-1S-4W STOR(75)ABD	MI	025	Calhoun	1971	N
015645	Goodloe Cons DBS	KY	071	Floyd	1924	N	009822	Lee 04-1S-5W STOR(76)ABD	MI	025	Calhoun	1972	ON
015646	<i>Goodloe DBS</i> Alias for: (015645) Goodloe Cons DBS [COMB]	KY	071	Floyd			427279	<i>Loreed</i> Alias for: (593157) Reed City [COMB]	MI	133	Osceola		
286353	Gray STOR ABD	KY	121	Knox	1971	N	449207	Marsac Creek STOR(77)ABD	MI	147	St Clair	1965	ON
015689	<i>Hagerhill DBS</i> Alias for: (015670) Van Lear Cons DBS [COMB]	KY	115	Johnson			486611	Morton STOR ABD	MI	107	Mecosta	1946	N
303692	Hanson STOR	KY	107	Hopkins	1962	ON	513424	<i>Norwich</i> Alias for: (778406) Woodville [COMB]	MI	123	Newaygo		
305056	Hardeson Consol	KY	047	Christian	1954	ON	593157	Reed City STOR(47)	MI	133	Osceola	1940	ON
015572	Hardy Branch	KY	121	Knox	1996	N							
015573	Holley Branch	KY	025	Breathitt	1993	N							

Field Code	Field Name/ Alias/Remarks	State/ Sub	Co Code	County	Disc Year	Field Type	Field Code	Field Name/ Alias/Remarks	State/ Sub	Co Code	County	Disc Year	Field Type
003536	Washington Sec 28 STOR	MI	099	Macomb	1975	OA	005123	Creola	OH	163	Vinton	1899	N
774212	Winterfield STOR	MI	035	Clare	1940	ONA	005687	Creston West Alias for: (015229) Lafayette-Canaan [COMB]	OH	169	Wayne		
778406	Woodville STOR(51)	MI	123	Newaygo	1943	ONA	171953	Crossenville Alias for: (015224) Gore Consol [COMB]	OH	045	Fairfield		
785170	Yankee STOR ABD	MI	147	St Clair	1963	N	171953	Crossenville Alias for: (015224) Gore Consol [COMB]	OH	127	Perry		
Mississippi													
006893	Apollo East	MS	111	Perry	1995	O	184488	Deavertown Alias for: (015239) Roseville Consol [COMB]	OH	115	Morgan		
015465	Ashwood South	MS	157	Wilkinson	1995	N	184488	Deavertown Alias for: (015239) Roseville Consol [COMB]	OH	127	Perry		
015371	Berry Creek	MS	005	Amite	1995	N	005134	Derwent Alias for: (648033) Sharon Consol [COMB]	OH	059	Guernsey		
015468	Brownsville Dome	MS	049	Hinds	1995	O	193812	Dixie Alias for: (015224) Gore Consol [COMB]	OH	127	Perry		
103353	Bunker Hill	MS	157	Wilkinson	1995	N	005141	Doanville Alias for: (015232) Millfield Consol [COMB]	OH	009	Athens		
015379	Buttahatchie	MS	095	Monroe	1995	N	198316	Dorr Run Alias for: (015245) Union Furnace Consol [COMB]	OH	073	Hocking		
005264	Holiday	MS	001	Adams	1993	N	015222	Dresden Consol	OH	119	Muskingum	1913	N
015469	Indian Wells	MS	061	Jasper	1996	O	005151	Dutch Run Alias for: (015233) Monroe-Coshocton Consol [COMB]	OH	031	Coshocton		
015466	King Bee	MS	111	Perry	1995	O	005156	Edlam	OH	075	Holmes	1915	N
015464	Lakeheart	MS	157	Wilkinson	1995	N	005156	Edlam	OH	083	Knox	1915	N
015401	Luxor	MS	037	Franklin	1995	N	005154	Edlam East Alias for: (005156) Edlam [COMB]	OH	075	Holmes		
015403	Midway Dome	MS	073	Lamar	1995	N	005171	Esto Alias for: (015225) Gratiot-Newcastle [COMB]	OH	083	Knox		
015407	Monticello Dome	MS	077	Lawrence	1995	N	004896	Fairview Church Alias for: (015236) Philo Consol [COMB]	OH	119	Muskingum		
015471	Pecan Tree	MS	157	Wilkinson	1996	N	004897	Fallsburg Alias for: (015225) Gratiot-Newcastle [COMB]	OH	089	Licking		
015467	Prentiss Dome	MS	065	Jefferson Davis	1995	N	005180	Fivemile Creek Alias for: (015245) Union Furnace Consol [COMB]	OH	073	Hocking		
015417	Rocky Branch	MS	005	Amite	1995	OA	005182	Flint Ridge Alias for: (015225) Gratiot-Newcastle [COMB]	OH	089	Licking		
015463	Section Branch	MS	005	Amite	1995	N	005184	Floodwood Alias for: (015232) Millfield Consol [COMB]	OH	009	Athens		
015470	Smithtown	MS	041	Greene	1996	O	005187	Forest Glen Alias for: (015225) Gratiot-Newcastle [COMB]	OH	089	Licking		
Missouri													
002175	Florissant STOR(55)AQF	MO	189	St Louis	1953	O	005193	Freedom West	OH	133	Portage	1960	ON
747512	Walton STOR ABD	MO	037	Cass	1971	O	258216	Friendsville Alias for: (015229) Lafayette-Canaan [COMB]	OH	103	Medina		
Montana													
003619	Hawk Haven	MT	083	Richland	1981	OA	263866	Gambier Alias for: (015227) Homer Consol [COMB]	OH	083	Knox		
015412	Outlook SW	MT	091	Sheridan	1994	O	005209	Glouster Alias for: (015232) Millfield Consol [COMB]	OH	009	Athens		
Nebraska													
002799	Acorn	NE	057	Dundy	1995	O	015224	Gore Consol	OH	009	Athens	1891	ON
New Mexico													
011851	Allison	NM10	041	Roosevelt	1952	OA	015224	Gore Consol	OH	045	Fairfield	1891	ON
592103	Red Tank	NM10	025	Lea	1973	N	015224	Gore Consol	OH	073	Hocking	1891	ON
New York													
004504	Adrian Alias for: (004535) Adrian Reef [ALTER]	NY	101	Steuben			015224	Gore Consol	OH	127	Perry	1891	ON
004535	Adrian Reef	NY	101	Steuben	1971	N	015225	Gratiot-Newcastle	OH	031	Coshocton	1885	ONA
015382	Clymer Hill	NY	013	Chautauqua	1992	O	015225	Gratiot-Newcastle	OH	083	Knox	1885	ONA
007848	Colden East Alias for: (276959) Glenwood [COMB]	NY	029	Erie			015225	Gratiot-Newcastle	OH	089	Licking	1885	ONA
276959	Glenwood	NY	029	Erie	1960	N	015225	Gratiot-Newcastle	OH	119	Muskingum	1885	ONA
345200	Indian Creek	NY	009	Cattaraugus	1962	N	015225	Gratiot-Newcastle	OH	127	Perry	1885	ONA
015398	Karr Valley	NY	003	Allegany	1982	N	307691	Harrison Alias for: (015225) Gratiot-Newcastle [COMB]	OH	083	Knox		
015430	Whetstone Brook	NY	069	Ontario	1983	N	311287	Haynes Alias for: (015242) Sugargrove Consol [COMB]	OH	073	Hocking		
North Dakota													
204486	Duck Creek	ND	089	Stark	1995	OA	313512	Hebron Alias for: (015227) Homer Consol [COMB]	OH	089	Licking		
015393	Hiline	ND	089	Stark	1995	O	015227	Homer Consol	OH	045	Fairfield	1885	ON
012614	Rattlesnake Buttes	ND	011	Bowman	1995	O	015227	Homer Consol	OH	083	Knox	1885	ON
015428	Versippi	ND	089	Stark	1995	OA	015227	Homer Consol	OH	089	Licking	1885	ON
Ohio													
015215	Aid Consol	OH	053	Gallia	1925	N	005543	Irish Ridge Alias for: (015225) Gratiot-Newcastle [COMB]	OH	089	Licking		
015215	Aid Consol	OH	087	Lawrence	1925	N	005545	Irville Alias for: (015222) Dresden Consol [COMB]	OH	119	Muskingum		
005015	Baughman Alias for: (015227) Homer Consol [COMB]	OH	045	Fairfield			005816	Jackson-Noble Alias for: (648033) Sharon Consol [COMB]	OH	121	Noble		
056021	Bennington Alias for: (015227) Homer Consol [COMB]	OH	089	Licking			005607	Jefferson-Knox Alias for: (015227) Homer Consol [COMB]	OH	083	Knox		
005047	Boodle Alias for: (015225) Gratiot-Newcastle [COMB]	OH	089	Licking			366270	Junction City Alias for: (015216) Bremen-New Lexington [COMB]	OH	127	Perry		
015216	Bremen-New Lexington	OH	045	Fairfield	1907	ONA	384106	Knox Alias for: (015236) Philo Consol [COMB]	OH	059	Guernsey		
015216	Bremen-New Lexington	OH	127	Perry	1907	ONA	384106	Knox STOR(45)ABD	OH	083	Knox	1945	N
094347	Brookover Alias for: (015236) Philo Consol [COMB]	OH	119	Muskingum			015229	Lafayette-Canaan	OH	103	Medina	1899	N
005061	Brown-Knox Alias for: (015227) Homer Consol [COMB]	OH	083	Knox			015229	Lafayette-Canaan	OH	169	Wayne	1899	N
096238	Brownsville Alias for: (015225) Gratiot-Newcastle [COMB]	OH	089	Licking			395114	Lake-Ashland	OH	005	Ashland	1916	N
005678	Brownsville West Alias for: (015225) Gratiot-Newcastle [COMB]	OH	089	Licking			404104	Laurel Alias for: (015242) Sugargrove Consol [COMB]	OH	073	Hocking		
097385	Bruno Alias for: (015225) Gratiot-Newcastle [COMB]	OH	127	Perry			005590	Layland Alias for: (015233) Monroe-Coshocton Consol [COMB]	OH	075	Holmes		
112872	Caldwell Alias for: (648033) Sharon Consol [COMB]	OH	121	Noble			422722	Logan Alias for: (015245) Union Furnace Consol [COMB]	OH	073	Hocking		
114515	Cambridge Alias for: (015236) Philo Consol [COMB]	OH	059	Guernsey			422908	Logan North Alias for: (015224) Gore Consol [COMB]	OH	073	Hocking		
015218	Canton Consol	OH	151	Stark	1902	ONA	426287	Longstreth Alias for: (015224) Gore Consol [COMB]	OH	073	Hocking		
015218	Canton Consol	OH	157	Tuscarawas	1883	ONA	005840	Madisonburg Alias for: (662983) Smithville [COMB]	OH	169	Wayne		
126721	Cavallo Alias for: (015233) Monroe-Coshocton Consol [COMB]	OH	083	Knox			005864	Mantua South Alias for: (005193) Freedom West [COMB]	OH	133	Portage		
127900	Cedar Grove Alias for: (015245) Union Furnace Consol [COMB]	OH	073	Hocking			005832	McGlade Alias for: (015222) Dresden Consol [COMB]	OH	119	Muskingum		
128272	Cedar Valley Alias for: (015238) Reedsburg Consol [COMB]	OH	169	Wayne			005839	McLeish Alias for: (015224) Gore Consol [COMB]	OH	009	Athens		
131047	Chalfants Alias for: (015221) Clayton Consol [COMB]	OH	127	Perry			471598	Middle Creek Alias for: (648033) Sharon Consol [COMB]	OH	121	Noble		
005092	Chaseville Alias for: (648033) Sharon Consol [COMB]	OH	121	Noble			015232	Millfield Consol	OH	009	Athens	1898	ON
005433	Claysville Alias for: (015236) Philo Consol [COMB]	OH	059	Guernsey			005887	Millwood Alias for: (015225) Gratiot-Newcastle [COMB]	OH	083	Knox		
015221	Clayton Consol	OH	127	Perry	1918	ON	015233	Monroe-Coshocton Consol	OH	031	Coshocton	1898	ON
005102	Coaldale Alias for: (015225) Gratiot-Newcastle [COMB]	OH	119	Muskingum			015233	Monroe-Coshocton Consol	OH	075	Holmes	1898	ON
005108	Columbia Center Alias for: (015241) Strongsville-Liverpool [COMB]	OH	093	Lorain			015233	Monroe-Coshocton Consol	OH	083	Knox	1898	ON
005114	Cottage Hill Alias for: (015225) Gratiot-Newcastle [COMB]	OH	119	Muskingum			489122	Mount Perry Alias for: (015225) Gratiot-Newcastle [ALTER]	OH	127	Perry		
001005	Coulter Alias for: (015235) Perrysville Consol [COMB]	OH	139	Richland			489804	Moxahala Alias for: (015224) Gore Consol [COMB]	OH	127	Perry		

Field Code	Field Name/ Alias/Remarks	State/ Sub	Co Code	County	Disc Year	Field Type	Field Code	Field Name/ Alias/Remarks	State/ Sub	Co Code	County	Disc Year	Field Type
015557	Balt	TX	269	King	1996	O	015728	John R Jacobs	TX	143	Erath	1996	N
015366	Bander - Lila	TX	337	Montague	1995	O	015538	Jumpstart	TX	417	Shackelford	1996	O
015367	Bandera - Lila - Lyn	TX	337	Montague	1995	O	015563	Katie's Luck	TX	415	Scurry	1996	O
011059	Beaumont NW	TX	245	Jefferson	1990	ONA	370123	Katy	TX	300	Fort Bend	1938	ONA
056517	Bentley	TX	363	Palo Pinto	1995	N		STOR					
060292	Bibb East	TX	093	Comanche	1949	ONA	370123	Katy	TX	300	Fort Bend	1938	ONA
	STOR ABD						000678	Katy South	TX	300	Fort Bend		
015372	Big Cat	TX	417	Shackelford	1995	O		Alias for: (370123) Katy [COMB]					
015373	Big Easy	TX	441	Taylor	1995	O	000678	Katy South	TX	300	Fort Bend		
015363	Blackdog	TX	003	Andrews	1995	O		Alias for: (370123) Katy [COMB]					
015374	BMW NW	TX	253	Jones	1995	O	015741	Keep It	TX	75	Concho	1996	O
015375	Bob West North	TX	505	Zapata	1995	N	015709	Kirkland South	TX	095	Childress	1996	O
015376	Bob West NW	TX	505	Zapata	1995	N	015539	Krooked Cliff	TX	417	Shackelford	1996	O
015377	Bob's	TX	417	Shackelford	1995	O	015729	Krooked River	TX	447	Throckmorton	1995	N
015378	Bobcat Run South	TX	361	Orange	1995	N	015541	Krooked River West	TX	207	Haskell	1995	O
015719	Bohlwhite	TX	395	Robertson	1995	N	392293	La Rosa	TX	391	Refugio	1938	ONA
084246	Bowie Creek	TX	307	McCulloch	1995	N	392324	La Rosa North	TX	391	Refugio		
805339	Brazos Blk 339	TX	090	Offshore-State				Alias for: (392293) La Rosa [COMB]					
	Alias for: (014598) State Tract 339-L [ALTER]						392355	La Rosa NW	TX	391	Refugio		
015712	Brazos Blk 341-L	TX	039	Brazoria	1995	N		Alias for: (392293) La Rosa [COMB]					
010679	Bright Falcon	TX	239	Jackson	1986	ON	392386	La Rosa South	TX	391	Refugio		
015514	Broom City	TX	001	Anderson	1995	O		Alias for: (392293) La Rosa [COMB]					
015547	BS&T	TX	417	Shackelford	1995	O	392417	La Rosa West	TX	391	Refugio		
015362	BSR	TX	313	Madison	1995	O		Alias for: (392293) La Rosa [COMB]					
015738	Bud Johnson	TX	081	Coke	1996	O	407662	Lee Ray	TX	429	Stephens	1921	ONA
015548	Buds Butte	TX	353	Nolan				STOR					
101779	Buffalo SW	TX	289	Leon	1996	N	015722	Leviticus	TX	289	Leon	1996	N
106236	Burr Oak	TX	095	Concho	1995	O	015434	Lily Ann	TX	233	Hutchinson	1996	O
015549	C. w. h	TX	417	Shackelford	1994	O	015742	Little Mesa	TX	443	Terrell	1995	O
015550	C.W.H. North	TX	417	Shackelford	1995	O	015591	Little Pig	TX	335	Mitchell	1996	O
015360	Camp Follower	TX	131	Duval	1995	N	015751	Little Rok	TX	285	Lavaca	1996	N
015551	Campo Grande	TX	433	Stonewall	1995	O	015495	Lohn Ranger	TX	307	McCulloch	1995	N
015552	Carlile SW	TX	433	Stonewall			015730	Lonesome Duffer	TX	363	Palo Pinto	1996	N
015502	Celeste	TX	175	Goliad	1995	N	015752	Lonken	TX	239	Jackson	1995	N
015381	China Townsite	TX	245	Jefferson	1995	N	015513	Lopez South	TX	479	Webb	1995	O
015553	Chrane	TX	059	Callahan			428848	Lott Ranch	TX	483	Wheeler	1976	ON
147214	Clear Lake	TX	201	Harris	1938	ONA	015592	Mabee Nova	TX	003	Andrews	1995	O
	STOR						440372	Maetze North	TX	175	Goliad	1965	ON
007306	Clifton	TX	417	Shackelford	1995	O	015614	Manzanias	TX	019	Bandera	1996	O
015739	Co-MC	TX	307	McCulloch	1996	O	015615	Markas	TX	013	Atascosa		
152035	Cold Springs	TX	407	San Jacinto	1940	ONA	015364	Mary Jane	TX	060	Rusk	1995	N
152190	Cold Springs West	TX	407	San Jacinto			015704	Matagorda Is Blk 558-L	TX	321	Matagorda	1995	N
	Alias for: (152035) Cold Springs [COMB]						873629	Matagorda Island Blk 629	TX	009	Offshore-State	1976	ONA
								PBI 005809					
015588	Corner Shot	TX	149	Fayette	1996	O	015616	Melon Ranch	TX	391	Refugio	1995	O
162606	Corpus Christi Uptown	TX	355	Nueces	1970	ON	015496	Meme	TX	435	Sutton	1995	N
015506	Cousin	TX	239	Jackson	1994	N	015593	Mercury M	TX	317	Martin	1995	O
015383	Craft Upper	TX	429	Stephens	1994	N	015710	Merex Resources	TX	293	Hutchinson	1996	O
014215	Dan A Hughes	TX	505	Zapata	1991	N	015753	Mikesa NW	TX	297	Live Oak	1996	N
015493	Deer Canyon	TX	443	Terrell	1995	N	475814	Millsap	TX	367	Parker	1965	N
015558	Diamante	TX	165	Gaines	1995	O		STOR ABD					
015516	Digger	TX	401	Rusk	1993	O	009871	Milsap	TX	367	Parker	1973	N
015515	Domino	TX	387	Red River	1995	O		STOR ABD					
015384	Dos Anos	TX	311	McMullen	1994	N	015542	Missing Tom	TX	433	Stonewall	1995	O
015533	Dougs Doggy Deal	TX	253	Jones	1995	O	015543	Murfee	TX	253	Jones		
015559	Dry Duck	TX	125	Dickens	1995	O	015410	Murry's Magic	TX	297	Live Oak	1995	O
015580	Dustville	TX	227	Howard	1996	O	495044	Murulla	TX	140	Duval	1995	OA
015534	Dyno	TX	417	Shackelford	1996	O	495292	Muskogee	TX	123	De Witt		
015386	E 115	TX	417	Shackelford	1994	O	015705	Navasota River	TX	185	Grimes	1995	N
015387	E 115 SW	TX	417	Shackelford	1995	O	015564	Navigators	TX	125	Dickens	1996	O
210582	Eagle Lake South	TX	089	Colorado			015005	Near Ranch	TX	417	Shackelford	1994	ON
	Alias for: (704875) Thomas [RENAM]						015617	New Collins	TX	297	Live Oak	1995	O
015388	East View	TX	417	Shackelford	1995	O	015743	New Year '95	TX	095	Concho	1995	O
015611	EDR	TX	131	Duval	1995	O	015517	Ocean View	TX	417	Shackelford	1996	O
014686	El Anzuelo	TX	261	Kenedy	1993	ON	015518	Ona Burns	TX	049	Brown		
015278	El Coyote	TX	047	Brooks	1994	N	015519	P T	TX	253	Jones	1995	O
010080	El Torito	TX	239	Jackson	1985	ON	015594	P&P	TX	103	Crane	1995	O
015560	Elizabeth Rose	TX	115	Dawson	1995	O	015413	Paint Canyon	TX	447	Throckmorton	1995	O
015503	Farley Turk	TX	239	Jackson	1995	N	015520	Palo	TX	417	Shackelford		
238273	Feldman SE	TX	211	Hemphill	1965	ON	537942	Panhandle West	TX	375	Potter	1918	N
238583	Felmac	TX	165	Gaines	1955	ON		STOR ABD					
242203	Fishers Reef North	TX	071	Chambers	1995	N	538872	Papoose	TX	495	Winkler	1995	N
015494	Ford Ranch	TX	307	McCulloch	1995	N	015521	Peacock SW	TX	433	Stonewall	1996	O
014756	Friendswood	TX	339	Montgomery	1993	ON	015415	Periphery	TX	253	Jones	1995	O
015544	Funston North	TX	253	Jones	1996	O	015595	Petty 48	TX	227	Howard	1995	O
015714	Galveston Blk 150-L	TX	167	Galveston	1995	N	554590	Pickard Ranch	TX	417	Shackelford	1995	ON
267386	Gasper	TX	110	Wilson	1954	ON	015498	Pickrell	TX	383	Reagan	1996	N
014942	Gerald	TX	195	Hansford	1994	ON	554962	Pickton	TX	253	Hopkins	1944	ONA
015561	Girard East	TX	125	Dickens	1995	O		STOR					
015581	Glenda	TX	227	Howard	1996	O	015744	Pioneer-Rattlesnake	TX	399	Runnels	1996	O
015497	Glossop	TX	371	Pecos	1995	N	015522	Pixie's Peak	TX	441	Taylor	1996	O
280656	Goose Egg	TX	311	McMullen	1994	N	015523	Pool Of Siloam	TX	253	Jones		
281005	Gordon North	TX	363	Palo Pinto	1995	N	015596	Pyote Bay	TX	475	Ward		
015619	Gotebo Kid	TX	507	Zavala	1995	O	015524	R E H	TX	353	Nolan		
015724	Great Barrier	TX	417	Shackelford	1995	N	015731	Rafter Jay	TX	367	Parker	1995	N
015512	Guerra East	TX	427	Starr	1995	O	014805	Rancho Saenz	TX	440	Duval	1992	OA
015391	Hackberry Sandtrap	TX	361	Orange	1995	N	015554	Rand-Poulson	TX	219	Hockley	1995	O
015392	Half North	TX	105	Crockett	1995	O	015706	Raun	TX	300	Wharton	1996	N
015740	Half North	TX	105	Crockett	1995	O	015499	Read Ranch	TX	105	Crockett	1995	N
303423	Hannas Draw	TX	421	Sherman	1984	N	591173	Red Lake North	TX	161	Freestone	1995	N
303599	Hansford	TX	393	Roberts	1953	ONA	015525	Regalo-Divino	TX	353	Nolan	1996	O
001165	Hanvey	TX	133	Eastland	1979	ONA	015711	Rehm North	TX	205	Hartley	1996	O
015562	Hard Hat	TX	169	Garza	1995	O	015526	Riddler	TX	433	Stonewall	1996	O
310450	Hawkins	TX	499	Wood	1940	ONA	015732	Robbie Davis	TX	429	Stephens	1996	N
	STOR(58)ABD						008994	Rooster	TX	417	Shackelford	1995	O
311597	Haystack	TX	239	Jackson	1995	N	615006	Rotherwood West	TX	201	Harris	1955	OA
015725	Heather's	TX	207	Haskell	1995	N		STOR					
014955	Herta Rose	TX	417	Shackelford	1994	ON	015527	Rough Ride					

TEXAS

Field Code	Field Name/ Alias/Remarks	State/ Sub	Co Code	County	Disc Year	Field Type	Field Code	Field Name/ Alias/Remarks	State/ Sub	Co Code	County	Disc Year	Field Type
014598	State Tract 339-L	TX	05	Offshore-State	1992	N	824057	East Cameron Blk 57	LA	00	Offshore-Federal		
015701	Stimmel South	TX	30	Wharton	1995	N		Alias for: (824071) East Cameron Blk 71 [BLOCK]					
015584	Strawberry Fields	TX	80	Mitchell	1995	O	824058	East Cameron Blk 58	LA	00	Offshore-Federal		
015735	Stray Cat	TX	70	Shackelford	1995	N		Alias for: (824071) East Cameron Blk 71 [BLOCK]					
015528	Strike King	TX	70	Shackelford	1995	O	824071	East Cameron Blk 71	LA	00	Offshore-Federal	1958	N
015585	Summer Rae	TX	80	Howard	1996	O	824171	East Cameron Blk 171	LA	00	Offshore-Federal	1996	N
015746	T Bradberry	TX	75	McCulloch	1996	O	824185	East Cameron Blk 185	LA	00	Offshore-Federal	1971	N
015421	Tail Feathers	TX	30	Wharton	1994	N	824190	East Cameron Blk 190	LA	00	Offshore-Federal		
015422	Tea Jay	TX	40	Webb	1995	N		Alias for: (935280) West Cameron Blk 280 [BLOCK]					
704875	Thomas	TX	30	Colorado	1969	N	824200	East Cameron Blk 200	LA	00	Offshore-Federal		
015586	Three Ninos	TX	80	Glasscock	1996	O		Alias for: (929202) Vermilion Blk 202 [BLOCK]					
015529	Thrkmtn. Lc -95-	TX	70	Throckmorton	1996	O	824201	East Cameron Blk 201	LA	00	Offshore-Federal		
015530	Throckmorton L&c 116	TX	70	Throckmorton	1996	O		Alias for: (929202) Vermilion Blk 202 [BLOCK]					
010634	Tom Cat	TX	70	Shackelford	1995	N	826276	East Cameron SA Blk 276	LA	00	Offshore-Federal	1996	N
015747	Tom Miller	TX	75	Runnels	1995	O	826286	East Cameron SA Blk 286	LA	00	Offshore-Federal	1971	N
015423	Tomato	TX	70	Nolan	1995	O	826287	East Cameron SA Blk 287	LA	00	Offshore-Federal		
713440	Topaz	TX	60	Red River	1995	O		Alias for: (826286) East Cameron SA Blk 286 [BLOCK]					
015426	Triple B	TX	70	Nolan	1995	O	826303	East Cameron SA Blk 303	LA	00	Offshore-Federal	1977	N
015565	Tstar	TX	85	Hockley	1996	O	826322	East Cameron SA Blk 322	LA	00	Offshore-Federal	1973	ON
719850	Tubb	TX	80	Howard	1995	O	826328	East Cameron SA Blk 328	LA	00	Offshore-Federal		
015347	Turkey Bayou	TX	30	Tyler	1994	ON		Alias for: (826322) East Cameron SA Blk 322 [BLOCK]					
015427	Two Points Left	TX	70	Jones	1995	O	826330	East Cameron SA Blk 330	LA	00	Offshore-Federal		
015620	Ulrich East	TX	30	Chambers	1994	O		Alias for: (826338) East Cameron SA Blk 338 [BLOCK]					
733999	Vaquero	TX	80	Andrews	1995	O	826331	East Cameron SA Blk 331	LA	00	Offshore-Federal		
015582	Veneteam SE	TX	80	Ector		O		Alias for: (826338) East Cameron SA Blk 338 [BLOCK]					
015429	Viboras Central	TX	40	Brooks	1995	N	826334	East Cameron SA Blk 334	LA	00	Offshore-Federal	1973	N
015702	Vidor Ames NE	TX	30	Orange	1995	N	826338	East Cameron SA Blk 338	LA	00	Offshore-Federal	1973	ON
015748	W Richardson East	TX	75	Upton	1995	O	826349	East Cameron SA Blk 349	LA	00	Offshore-Federal		
015531	Wagon	TX	70	Palo Pinto	1995	O		Alias for: (826338) East Cameron SA Blk 338 [BLOCK]					
764509	White Oak	TX	60	Upshur	1991	N	826352	East Cameron SA Blk 352	LA	00	Offshore-Federal		
015736	Whitt SW	TX	70	Parker	1996	N		Alias for: (826353) East Cameron SA Blk 353 [BLOCK]					
015501	William Patrick	TX	75	Concho	1995	N	826353	East Cameron SA Blk 353	LA	00	Offshore-Federal	1972	N
015532	Zachary	TX	70	Haskell	1995	O	826354	East Cameron SA Blk 354	LA	00	Offshore-Federal		
015749	ZZ Top	TX	75	Reagan	1995	O		Alias for: (826353) East Cameron SA Blk 353 [BLOCK]					
Utah													
055587	Bend	UT	04	Uintah			826364	East Cameron SA Blk 364	LA	00	Offshore-Federal	1996	N
	Alias for: (499634) Natural Buttes [COMB]						829044	Eugene Island Blk 44	LA	00	Offshore-Federal		
131078	Chalk Creek	UT	04	Summit				Alias for: (829045) Eugene Island Blk 45 [BLOCK]					
	STOR(60)AQF						829045	Eugene Island Blk 45	LA	00	Offshore-Federal	1948	ONA
150268	Coalville	UT	04	Summit			829046	Eugene Island Blk 46	LA	00	Offshore-Federal		
	STOR AQF							Alias for: (829045) Eugene Island Blk 45 [BLOCK]					
287669	Greater Cisco Area	UT	01	Grand	1925	ONA	829050	Eugene Island Blk 50	LA	00	Offshore-Federal		
499634	Natural Buttes	UT	04	Uintah	1940	ONA		Alias for: (829045) Eugene Island Blk 45 [BLOCK]					
531578	Overlook	UT	01	Grand			829070	Eugene Island Blk 70	LA	00	Offshore-Federal	1981	ON
	Alias for: (287669) Greater Cisco Area [COMB]						829071	Eugene Island Blk 71	LA	00	Offshore-Federal	1996	N
552133	Peters Point	UT	00	Carbon	1953	ONA	829163	Eugene Island Blk 163	LA	00	Offshore-Federal		
								Alias for: (829164) Eugene Island Blk 164 [BLOCK]					
Washington													
353192	Jackson Prairie	WA	04	Lewis			829164	Eugene Island Blk 164	LA	00	Offshore-Federal	1987	N
	STOR(63)AQF						829239	Eugene Island Blk 239	LA	00	Offshore-Federal		
								Alias for: (829240) Eugene Island Blk 240 [BLOCK]					
West Virginia													
028700	Aspinall-Finster	WV	04	Lewis	1909	N	829240	Eugene Island Blk 240	LA	00	Offshore-Federal	1981	N
	STOR(80)						829258	Eugene Island Blk 258	LA	00	Offshore-Federal	1970	ON
091588	Bridgeport	WV	03	Harrison			829259	Eugene Island Blk 259	LA	00	Offshore-Federal		
	Alias for: (091681) Bridgeport-Pruntytown [COMB]							Alias for: (831276) Eugene Island SA Blk 276 [BLOCK]					
091681	Bridgeport-Pruntytown	WV	03	Harrison	1909	N	829260	Eugene Island Blk 260	LA	00	Offshore-Federal		
	STOR(36)							Alias for: (831276) Eugene Island SA Blk 276 [BLOCK]					
219529	Elk-Poca (Sissonville)	WV	03	Kanawha	1924	ON	831276	Eugene Island SA Blk 276	LA	00	Offshore-Federal	1964	ONA
	STOR(49)						831277	Eugene Island SA Blk 277	LA	00	Offshore-Federal		
234622	Fallen Timber (Mobley)	WV	10	Wetzel	1893	O		Alias for: (829258) Eugene Island Blk 258 [BLOCK]					
311132	Hayes	WV	04	Marion			831283	Eugene Island SA Blk 283	LA	00	Offshore-Federal	1996	N
	Alias for: (444340) Mannington [COMB]						831292	Eugene Island SA Blk 292	LA	00	Offshore-Federal	1964	N
428271	Lost Creek	WV	03	Harrison			831309	Eugene Island SA Blk 309	LA	00	Offshore-Federal		
	Alias for: (760959) Weston-Jane Lew [ALTER]							Alias for: (831292) Eugene Island SA Blk 292 [BLOCK]					
444340	Mannington	WV	04	Marion	1889	ON	831322	Eugene Island SA Blk 322	LA	00	Offshore-Federal	1970	N
	STOR(56)						831323	Eugene Island SA Blk 323	LA	00	Offshore-Federal		
479915	Mobley	WV	10	Wetzel				Alias for: (831322) Eugene Island SA Blk 322 [BLOCK]					
	Alias for: (234622) Fallen Timber (Mobley) [COMB]						831324	Eugene Island SA Blk 324	LA	00	Offshore-Federal	1979	N
562031	Poca	WV	03	Kanawha			831325	Eugene Island SA Blk 325	LA	00	Offshore-Federal	1988	N
	Alias for: (219529) Elk-Poca (Sissonville) [COMB]						831326	Eugene Island SA Blk 326	LA	00	Offshore-Federal		
582509	Rackett-Newberne	WV	02	Gilmer				Alias for: (831325) Eugene Island SA Blk 325 [BLOCK]					
	Alias for: (657612) Sinking Creek [ALTER]						831348	Eugene Island SA Blk 348	LA	00	Offshore-Federal	1976	N
584174	Raleigh	WV	08	Raleigh				PBI 831342					
	Alias for: (659945) Slab Fork [COMB]						834305	Ewing Bank Blk 305	LA	00	Offshore-Federal	1965	ON
597885	Rhodes	WV	04	Lewis			834873	Ewing Bank Blk 873	LA	00	Offshore-Federal	1991	N
	Alias for: (028700) Aspinall-Finster [ALTER]						834874	Ewing Bank Blk 874	LA	00	Offshore-Federal	1995	O
602659	Ripley	WV	03	Jackson			834910	Ewing Bank Blk 910	LA	00	Offshore-Federal	1996	O
	Alias for: (602814) Ripley South [RENAM]						834963	Ewing Bank Blk 963	LA	00	Offshore-Federal	1996	O
602814	Ripley South	WV	03	Jackson	1966	N	834977	Ewing Bank Blk 977	LA	00	Offshore-Federal	1996	N
652900	Shirley	WV	09	Tyler	1893	O	834988	Ewing Bank Blk 988	LA	00	Offshore-Federal	1986	O
	STOR							PBI 846019					
657612	Sinking Creek	WV	02	Gilmer	1894	ON	834006	Ewing Bank Blk 1006	LA	00	Offshore-Federal	1996	O
	STOR						840269	Garden Banks Blk 269	LA	00	Offshore-Federal	1996	N
659635	Skin Creek	WV	04	Lewis			842065	Grand Isle Blk 65	LA	00	Offshore-Federal	1996	N
	Alias for: (028700) Aspinall-Finster [ALTER]						842075	Grand Isle Blk 75	LA	00	Offshore-Federal		
659945	Slab Fork	WV	08	Raleigh	1922	N		Alias for: (842076) Grand Isle Blk 76 [BLOCK]					
	STOR(58)						842076	Grand Isle Blk 76	LA	00	Offshore-Federal	1972	N
760959	Weston-Jane Lew	WV	03	Harrison	1908	ON	842077	Grand Isle Blk 77	LA	00	Offshore-Federal		
	STOR(41)							Alias for: (842082) Grand Isle Blk 82 [BLOCK]					
							842078	Grand Isle Blk 78	LA	00	Offshore-Federal		
								Alias for: (842082) Grand Isle Blk 82 [BLOCK]					
							842081	Grand Isle Blk 81	LA	00	Offshore-Federal		
								Alias for: (842082) Grand Isle Blk 82 [BLOCK]					
							842082	Grand Isle Blk 82	LA	00	Offshore-Federal	1965	ON
							846069	Green Canyon Blk 69	LA	00	Offshore-Federal	1996	N
							846110	Green Canyon Blk 110	LA	00	Offshore-Federal	1984	O
								PBI 846065					
							846506	Green Canyon Blk 506	LA	00	Offshore-Federal	1996	O
							846691	Green Canyon Blk 691	LA	00	Offshore-Federal	1996	N
							849023	High Island Blk A23	LA	00	Offshore-Federal	1996	N
							848108	High Island Blk 108	LA	00	Offshore-Federal	19	

Field Code	Field Name/ Alias/Remarks	State/ Sub	Co Code	County	Disc Year	Field Type	Field Code	Field Name/ Alias/Remarks	State/ Sub	Co Code	County	Disc Year	Field Type
866104	Main Pass Bk 104	LA00	995	Offshore-Federal			916009	South Pelto Bk 9	LA00	995	Offshore-Federal		
	Alias for: (866103) Main Pass Bk 103 [BLOCK]							Alias for: (916013) South Pelto Bk 13 [MULTI]					
866131	Main Pass Bk 131	LA00	995	Offshore-Federal	1996	N		Alias for: (916020) South Pelto Bk 20 [MULTI]					
866144	Main Pass Bk 144	LA00	995	Offshore-Federal	1967	ONA	916010	South Pelto Bk 10	LA00	995	Offshore-Federal		
866151	Main Pass Bk 151	LA00	995	Offshore-Federal	1979	ONA		Alias for: (916020) South Pelto Bk 20 [BLOCK]					
868224	Main Pass EA Bk 224	LA00	995	Offshore-Federal			916011	South Pelto Bk 11	LA00	995	Offshore-Federal		
	Alias for: (868225) Main Pass EA Bk 225 [BLOCK]							Alias for: (916020) South Pelto Bk 20 [BLOCK]					
868225	Main Pass EA Bk 225	LA00	995	Offshore-Federal	1996	N	916012	South Pelto Bk 12	LA00	995	Offshore-Federal		
868242	Main Pass EA Bk 242	LA00	995	Offshore-Federal	1994	N		Alias for: (916020) South Pelto Bk 20 [MULTI]					
868249	Main Pass EA Bk 249	LA00	995	Offshore-Federal				Alias for: (916013) South Pelto Bk 13 [MULTI]					
	Alias for: (868225) Main Pass EA Bk 225 [BLOCK]						916013	South Pelto Bk 13	LA00	995	Offshore-Federal	1976	ON
868253	Main Pass EA Bk 253	LA00	995	Offshore-Federal	1972	ON	916020	South Pelto Bk 20	LA00	995	Offshore-Federal	1951	ONA
868254	Main Pass EA Bk 254	LA00	995	Offshore-Federal			919195	South Timbalier Bk 195	LA00	995	Offshore-Federal		
	Alias for: (868253) Main Pass EA Bk 253 [BLOCK]							Alias for: (919196) South Timbalier Bk 196 [BLOCK]					
868259	Main Pass EA Bk 259	LA00	995	Offshore-Federal	1990	N	919196	South Timbalier Bk 196	LA00	995	Offshore-Federal	1966	N
868260	Main Pass EA Bk 260	LA00	995	Offshore-Federal			921241	South Timbalier SA Bk 241	LA00	995	Offshore-Federal	1995	N
	Alias for: (868259) Main Pass EA Bk 259 [BLOCK]						921265	South Timbalier SA Bk 265	LA00	995	Offshore-Federal	1988	N
868261	Main Pass EA Bk 261	LA00	995	Offshore-Federal	1996	O	921266	South Timbalier SA Bk 266	LA00	995	Offshore-Federal		
868262	Main Pass EA Bk 262	LA00	995	Offshore-Federal	1996	N		Alias for: (921265) South Timbalier SA Bk 265 [BLOCK]					
870295	Main Pass SA Bk 295	LA00	995	Offshore-Federal			921278	South Timbalier SA Bk 278	LA00	995	Offshore-Federal		
	Alias for: (866144) Main Pass Bk 144 [BLOCK]							Alias for: (921265) South Timbalier SA Bk 265 [BLOCK]					
870305	Main Pass SA Bk 305	LA00	995	Offshore-Federal			921296	South Timbalier SA Bk 296	LA00	995	Offshore-Federal	1996	N
	Alias for: (870306) Main Pass SA Bk 306 [BLOCK]						921308	South Timbalier SA Bk 308	LA00	995	Offshore-Federal		
870306	Main Pass SA Bk 306	LA00	995	Offshore-Federal	1969	ONA		Alias for: (834873) Ewing Bank Bk 873 [BLOCK]					
874113	Mississippi Canyon Bk 113	LA00	995	Offshore-Federal	1976	O	929050	Vermilion Bk 50	LA00	995	Offshore-Federal	1960	ONA
874292	Mississippi Canyon Bk 292	LA00	995	Offshore-Federal	1996	O	929068	Vermilion Bk 68	LA00	995	Offshore-Federal		
874357	Mississippi Canyon Bk 357	LA00	995	Offshore-Federal				Alias for: (929075) Vermilion Bk 75 [BLOCK]					
	Alias for: (944152) West Delta SA Bk 152 [BLOCK]						929075	Vermilion Bk 75	LA00	995	Offshore-Federal	1992	N
874397	Mississippi Canyon Bk 397	LA00	995	Offshore-Federal	1984	N	929100	Vermilion Bk 100	LA00	995	Offshore-Federal	1996	N
874429	Mississippi Canyon Bk 429	LA00	995	Offshore-Federal	1996	O	929120	Vermilion Bk 120	LA00	995	Offshore-Federal	1957	ON
874485	Mississippi Canyon Bk 485	LA00	995	Offshore-Federal			929202	Vermilion Bk 202	LA00	995	Offshore-Federal	1990	N
	Alias for: (874397) Mississippi Canyon Bk 397 [BLOCK]							PBI 929182					
874486	Mississippi Canyon Bk 486	LA00	995	Offshore-Federal	1979	ON	929213	Vermilion Bk 213	LA00	995	Offshore-Federal		
874487	Mississippi Canyon Bk 487	LA00	995	Offshore-Federal				Alias for: (929214) Vermilion Bk 214 [BLOCK]					
	Alias for: (874486) Mississippi Canyon Bk 486 [BLOCK]						929214	Vermilion Bk 214	LA00	995	Offshore-Federal	1971	ON
874674	Mississippi Canyon Bk 674	LA00	995	Offshore-Federal			931308	Vermilion SA Bk 308	LA00	995	Offshore-Federal		
	Alias for: (874718) Mississippi Canyon Bk 718 [BLOCK]							Alias for: (931315) Vermilion SA Bk 315 [BLOCK]					
874718	Mississippi Canyon Bk 718	LA00	995	Offshore-Federal	1996	O	931315	Vermilion SA Bk 315	LA00	995	Offshore-Federal	1980	OA
874810	Mississippi Canyon Bk 810	LA00	995	Offshore-Federal	1996	O	931332	Vermilion SA Bk 332	LA00	995	Offshore-Federal	1993	O
890011	Sabine Pass Bk 11	LA00	995	Offshore-Federal	1980	N	931333	Vermilion SA Bk 333	LA00	995	Offshore-Federal		
890012	Sabine Pass Bk 12	LA00	995	Offshore-Federal				Alias for: (931332) Vermilion SA Bk 332 [BLOCK]					
	Alias for: (890011) Sabine Pass Bk 11 [MULTI]						931342	Vermilion SA Bk 342	LA00	995	Offshore-Federal	1975	N
894036	Ship Shoal Bk 36	LA00	995	Offshore-Federal			931355	Vermilion SA Bk 355	LA00	995	Offshore-Federal	1995	N
	Alias for: (894037) Ship Shoal Bk 37 [BLOCK]						931369	Vermilion SA Bk 369	LA00	995	Offshore-Federal	1975	ON
894037	Ship Shoal Bk 37	LA00	995	Offshore-Federal	1969	N	931370	Vermilion SA Bk 370	LA00	995	Offshore-Federal	1975	ON
894068	Ship Shoal Bk 68	LA00	995	Offshore-Federal				PBI 931369					
	Alias for: (916020) South Pelto Bk 20 [MULTI]						931385	Vermilion SA Bk 385	LA00	995	Offshore-Federal		
894090	Ship Shoal Bk 90	LA00	995	Offshore-Federal				Alias for: (931370) Vermilion SA Bk 370 [BLOCK]					
	Alias for: (894113) Ship Shoal Bk 113 [BLOCK]						931386	Vermilion SA Bk 386	LA00	995	Offshore-Federal		
894113	Ship Shoal Bk 113	LA00	995	Offshore-Federal	1955	ONA		Alias for: (931369) Vermilion SA Bk 369 [BLOCK]					
894158	Ship Shoal Bk 158	LA00	995	Offshore-Federal	1960	N	931389	Vermilion SA Bk 389	LA00	995	Offshore-Federal		
894159	Ship Shoal Bk 159	LA00	995	Offshore-Federal				Alias for: (931410) Vermilion SA Bk 410 [BLOCK]					
	Alias for: (894158) Ship Shoal Bk 158 [BLOCK]						931410	Vermilion SA Bk 410	LA00	995	Offshore-Federal	1995	N
894204	Ship Shoal Bk 204	LA00	995	Offshore-Federal			933155	Viosca Knoll Bk 155	LA00	995	Offshore-Federal	1995	N
	Alias for: (894230) Ship Shoal Bk 230 [BLOCK]						933697	Viosca Knoll Bk 697	LA00	995	Offshore-Federal		
894205	Ship Shoal Bk 205	LA00	995	Offshore-Federal				Alias for: (933741) Viosca Knoll Bk 741 [BLOCK]					
894219	Ship Shoal Bk 219	LA00	995	Offshore-Federal			933740	Viosca Knoll Bk 740	LA00	995	Offshore-Federal	1996	O
	Alias for: (894230) Ship Shoal Bk 230 [BLOCK]						933741	Viosca Knoll Bk 741	LA00	995	Offshore-Federal	1996	O
894220	Ship Shoal Bk 220	LA00	995	Offshore-Federal	1996	N	933783	Viosca Knoll Bk 783	LA00	995	Offshore-Federal	1985	N
894230	Ship Shoal Bk 230	LA00	995	Offshore-Federal	1962	ONA	933784	Viosca Knoll Bk 784	LA00	995	Offshore-Federal		
896244	Ship Shoal SA Bk 244	LA00	995	Offshore-Federal				Alias for: (933783) Viosca Knoll Bk 783 [BLOCK]					
	Alias for: (894230) Ship Shoal Bk 230 [BLOCK]						933786	Viosca Knoll Bk 786	LA00	995	Offshore-Federal	1996	O
896295	Ship Shoal SA Bk 295	LA00	995	Offshore-Federal			933816	Viosca Knoll Bk 816	LA00	995	Offshore-Federal		
	Alias for: (831322) Eugene Island SA Bk 322 [BLOCK]							Alias for: (933817) Viosca Knoll Bk 817 [BLOCK]					
896351	Ship Shoal SA Bk 351	LA00	995	Offshore-Federal	1986	ON	933817	Viosca Knoll Bk 817	LA00	995	Offshore-Federal	1982	ON
896358	Ship Shoal SA Bk 358	LA00	995	Offshore-Federal			933899	Viosca Knoll Bk 899	LA00	995	Offshore-Federal		
	Alias for: (834988) Ewing Bank Bk 988 [BLOCK]							Alias for: (911062) South Pass EA Bk 62 [BLOCK]					
900219	South Marsh Is NA Bk 219	LA00	995	Offshore-Federal			935130	West Cameron Bk 130	LA00	995	Offshore-Federal		
	Alias for: (929050) Vermilion Bk 50 [MULTI]						935265	West Cameron Bk 265	LA00	995	Offshore-Federal	1974	ON
900236	South Marsh Is NA Bk 236	LA00	995	Offshore-Federal	1960	ON	935269	West Cameron Bk 269	LA00	995	Offshore-Federal		
	PBI 900243							Alias for: (935265) West Cameron Bk 265 [BLOCK]					
900237	South Marsh Is NA Bk 237	LA00	995	Offshore-Federal			935280	West Cameron Bk 280	LA00	995	Offshore-Federal	1965	N
	Alias for: (900236) South Marsh Is NA Bk 236 [BLOCK]						935281	West Cameron Bk 281	LA00	995	Offshore-Federal		
900240	South Marsh Is NA Bk 240	LA00	995	Offshore-Federal				Alias for: (935280) West Cameron Bk 280 [BLOCK]					
	Alias for: (900241) South Marsh Is NA Bk 241 [BLOCK]						937521	West Cameron SA Bk 521	LA00	995	Offshore-Federal		
900241	South Marsh Is NA Bk 241	LA00	995	Offshore-Federal	1978	ONA		Alias for: (937543) West Cameron SA Bk 543 [BLOCK]					
900274	South Marsh Is NA Bk 274	LA00	995	Offshore-Federal	1982	N	937541	West Cameron SA Bk 541	LA00	995	Offshore-Federal		
900282	South Marsh Is NA Bk 282	LA00	995	Offshore-Federal	1996	N		Alias for: (937547) West Cameron SA Bk 547 [MULTI]					
901073	South Marsh Is SA Bk 73	LA00	995	Offshore-Federal	1963	ON	937543	West Cameron SA Bk 543	LA00	995	Offshore-Federal	1972	N
901075	South Marsh Is SA Bk 75	LA00	995	Offshore-Federal			937547	West Cameron SA Bk 547	LA00	995	Offshore-Federal	1981	N
	Alias for: (901076) South Marsh Is SA Bk 76 [BLOCK]						937580	West Cameron SA Bk 580	LA00	995	Offshore-Federal		
901076	South Marsh Is SA Bk 76	LA00	995	Offshore-Federal	1964	N		Alias for: (826334) East Cameron SA Bk 334 [BLOCK]					
901132	South Marsh Is SA Bk 132	LA00	995	Offshore-Federal			937599	West Cameron SA Bk 599	LA00	995	Offshore-Federal	1996	N
	Alias for: (901137) South Marsh Is SA Bk 137 [BLOCK]						937617	West Cameron SA Bk 617	LA00	995	Offshore-Federal	1974	N
901137	South Marsh Is SA Bk 137	LA00	995	Offshore-Federal	1974	ON	937630	West Cameron SA Bk 630	LA00	995	Offshore-Federal		
901155	South Marsh Is SA Bk 155	LA00	995	Offshore-Federal	1979	ONA		Alias for: (937617) West Cameron SA Bk 617 [BLOCK]					
901161	South Marsh Is SA Bk 161	LA00	995	Offshore-Federal			937631	West Cameron SA Bk 631	LA00	995	Offshore-Federal		
	Alias for: (901155) South Marsh Is SA Bk 155 [MULTI]							Alias for: (937617) West Cameron SA Bk 617 [BLOCK]					
899017	South Marsh Island Bk 17	LA00	995	Offshore-Federal	1996	N	937635	West Cameron SA Bk 635	LA00	995	Offshore-Federal	1996	N
899023	South Marsh Island Bk 2												

F.O. - TEXAS

Field Code	Field Name/ Alias/Remarks	State/ Sub	Co Code	County	Disc Year	Field Type	Field Code	Field Name/ Alias/Remarks	State/ Sub	Co Code	County	Disc Year	Field Type
805438	Brazos Blk 438 Alias for: (805437) Brazos Blk 437 [BLOCK]	TX00	995	Offshore-Federal									
805506	Brazos Blk 506	TX00	995	Offshore-Federal	1969	N							
805544	Brazos Blk 544	TX00	995	Offshore-Federal	1972	N							
805613	Brazos Blk 613	TX00	995	Offshore-Federal	1969	N							
807047	Brazos SA Blk A47 Alias for: (807070) Brazos SA Blk A70 [BLOCK]	TX00	995	Offshore-Federal									
807070	Brazos SA Blk A70	TX00	995	Offshore-Federal	1968	N							
822112	East Breaks Blk 112	TX00	995	Offshore-Federal	1975	N							
822945	East Breaks Blk 945	TX00	995	Offshore-Federal	1994	O							
822946	East Breaks Blk 946 Alias for: (822945) East Breaks Blk 945 [BLOCK]	TX00	995	Offshore-Federal									
826373	East Cameron SA Blk 373 Alias for: (840065) Garden Banks Blk 65 [BLOCK]	TX00	995	Offshore-Federal									
836034	Galveston Blk A34	TX00	995	Offshore-Federal	1995	N							
836035	Galveston Blk A35 Alias for: (836034) Galveston Blk A34 [BLOCK]	TX00	995	Offshore-Federal									
837288	Galveston Blk 288	TX00	995	Offshore-Federal	1963	ONA							
837289	Galveston Blk 289 Alias for: (837288) Galveston Blk 288 [BLOCK]	TX00	995	Offshore-Federal									
837301	Galveston Blk 301	TX00	995	Offshore-Federal	1996	N							
837322	Galveston Blk 322 Alias for: (837288) Galveston Blk 288 [BLOCK]	TX00	995	Offshore-Federal									
837363	Galveston Blk 363 Alias for: (837379) Galveston Blk 379 [MULTI] Alias for: (837379) Galveston Blk 379 [MULTI]	TX00	995	Offshore-Federal									
837379	Galveston Blk 379	TX00	995	Offshore-Federal	1988	N							
837389	Galveston Blk 389	TX00	995	Offshore-Federal	1961	N							
837395	Galveston Blk 395	TX00	995	Offshore-Federal	1996	N							
837424	Galveston Blk 424 Alias for: (837389) Galveston Blk 389 [BLOCK]	TX00	995	Offshore-Federal									
840065	Garden Banks Blk 65	TX00	995	Offshore-Federal	1988	N							
840083	Garden Banks Blk 83	TX00	995	Offshore-Federal	1988	ON							
840084	Garden Banks Blk 84 Alias for: (840083) Garden Banks Blk 83 [BLOCK]	TX00	995	Offshore-Federal									
840127	Garden Banks Blk 127 Alias for: (840083) Garden Banks Blk 83 [BLOCK]	TX00	995	Offshore-Federal									
840128	Garden Banks Blk 128 Alias for: (840083) Garden Banks Blk 83 [BLOCK]	TX00	995	Offshore-Federal									
840134	Garden Banks Blk 134 Alias for: (852384) High Island EA SX Blk A384 [BLOCK]	TX00	995	Offshore-Federal									
840171	Garden Banks Blk 171	TX00	995	Offshore-Federal	1988	O							
840172	Garden Banks Blk 172 Alias for: (840171) Garden Banks Blk 171 [BLOCK]	TX00	995	Offshore-Federal									
849154	High Island Blk A154	TX00	995	Offshore-Federal	1976	N							
848052	High Island Blk 52	TX00	995	Offshore-Federal	1959	ON							
848053	High Island Blk 53 Alias for: (848052) High Island Blk 52 [BLOCK]	TX00	995	Offshore-Federal									
848071	High Island Blk 71 Alias for: (848088) High Island Blk 88 [BLOCK]	TX00	995	Offshore-Federal									
848088	High Island Blk 88	TX00	995	Offshore-Federal	1969	N							
850245	High Island EA Blk A245	TX00	995	Offshore-Federal	1974	N							
852280	High Island EA SX Blk A280	TX00	995	Offshore-Federal	1976	N							
852286	High Island EA SX Blk A286 Alias for: (852280) High Island EA SX Blk A280 [BLOCK]	TX00	995	Offshore-Federal									
852384	High Island EA SX Blk A384	TX00	995	Offshore-Federal	1976	ONA							
854451	High Island SA Blk A451	TX00	995	Offshore-Federal	1995	N							
854507	High Island SA Blk A507	TX00	995	Offshore-Federal	1979	N							
854508	High Island SA Blk A508 Alias for: (854507) High Island SA Blk A507 [BLOCK]	TX00	995	Offshore-Federal									
854545	High Island SA Blk A545	TX00	995	Offshore-Federal	1975	ONA							
854546	High Island SA Blk A546 Alias for: (854545) High Island SA Blk A545 [BLOCK]	TX00	995	Offshore-Federal									
854547	High Island SA Blk A547 Alias for: (854545) High Island SA Blk A545 [BLOCK]	TX00	995	Offshore-Federal									
854548	High Island SA Blk A548 Alias for: (854545) High Island SA Blk A545 [BLOCK]	TX00	995	Offshore-Federal									
854549	High Island SA Blk A549	TX00	995	Offshore-Federal	1995	N							
854552	High Island SA Blk A552	TX00	995	Offshore-Federal	1979	ONA							
854553	High Island SA Blk A553 Alias for: (854552) High Island SA Blk A552 [BLOCK]	TX00	995	Offshore-Federal									
854576	High Island SA Blk A576	TX00	995	Offshore-Federal	1995	N							
873631	Matagorda Island Blk 631 Alias for: (873665) Matagorda Island Blk 665 [BLOCK]	TX00	995	Offshore-Federal									
873665	Matagorda Island Blk 665	TX00	995	Offshore-Federal	1977	N							
875031	Mustang Island Blk A31	TX00	995	Offshore-Federal	1980	N							
875032	Mustang Island Blk A32 Alias for: (875031) Mustang Island Blk A31 [BLOCK]	TX00	995	Offshore-Federal									
877085	Mustang Island EA Blk A85	TX00	995	Offshore-Federal	1976	N							
877086	Mustang Island EA Blk A86 Alias for: (877085) Mustang Island EA Blk A85 [BLOCK]	TX00	995	Offshore-Federal									
883010	North Padre Is EA Blk A10	TX00	995	Offshore-Federal	1988	N							
883892	North Padre Is EA Blk 892 Alias for: (883010) North Padre Is EA Blk A10 [BLOCK]	TX00	995	Offshore-Federal									
883913	North Padre Is EA Blk 913	TX00	995	Offshore-Federal	1980	N							
888525	Port Isabel Blk 525	TX00	995	Offshore-Federal	1996	N							

Oil and Gas Invalid Field Record List

Field Code	Field Name/ Comment	State/ Sub	Co Code	County	Field Code	Field Name/ Comment	State/ Sub	Co Code	County
Kansas									
015087	Zwahlen FIELD NAMED IN ERROR, NEVER PRODUCED	KS	099	Labette					
Kentucky									
418474	Little Elk Creek NAME NEVER USED BY STATE	KY	159	Martin					
Ohio									
666920	Southern Dist Ste Of Ohio FIELD NAME IS JACKSON	OH	079	Jackson					
666920	Southern Dist Ste Of Ohio FIELD NAME IS SHARPSBURG CONSOL	OH	167	Washington					
751356	Waterford SW NAME NEVER USED BY STATE	OH	117	Morrow					
788327	Youngstown FIELD NAME NEVER USED BY STATE	OH	099	Mahoning					
Texas									
672407	Spurs South FIELD NAME NEVER USED BY STATE	TX20	297	Live Oak					
805479	Brazos Blk 479 OFFSHORE-STATE ONLY	TX00	995	Offshore-Federal					
805543	Brazos Blk 543 NAME NEVER USED BY STATE	TX00	995	Offshore-Federal					
854452	High Island SA Blk A452 NAME NEVER USED BY STATE	TX00	995	Offshore-Federal					