

# U.S. Natural Gas Imports and Exports--1993

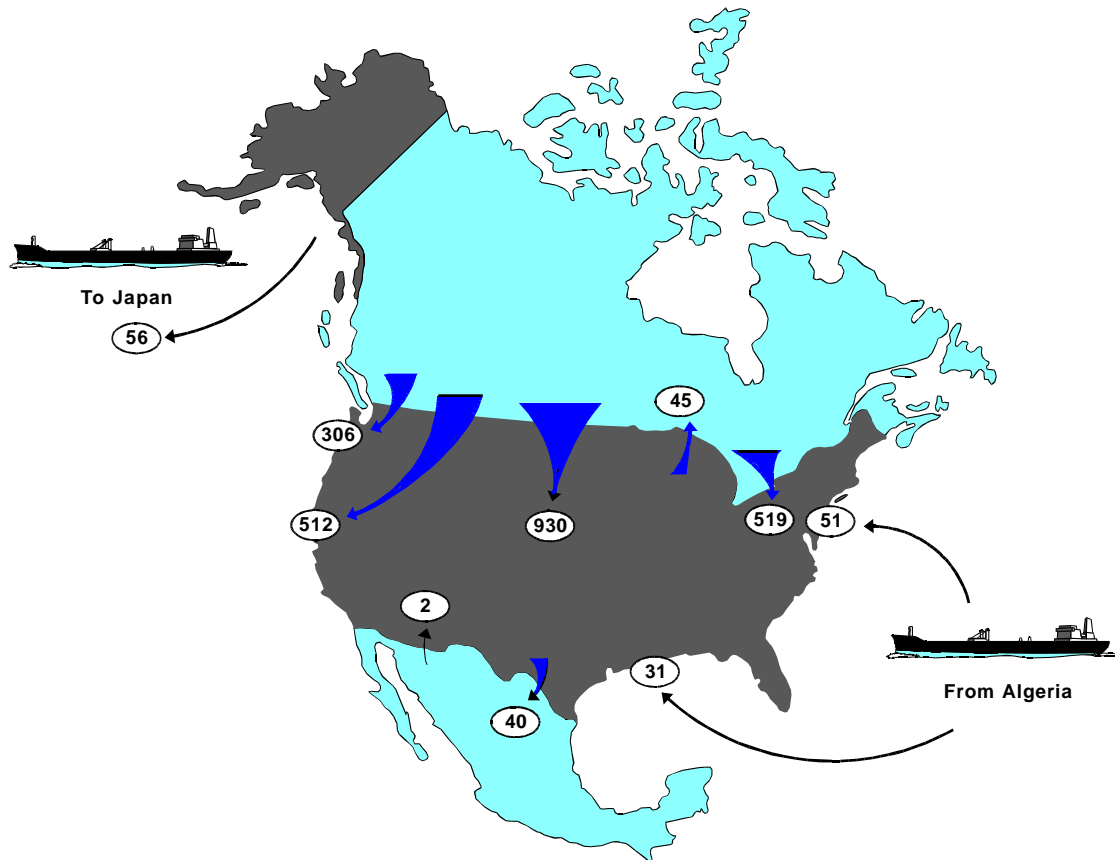
by Ann M. Ducca and Norman L. Crabtree

During 1993, an active integrated natural gas market for North America continued to develop (Figure FE1). Passage of the North American Free Trade Agreement (NAFTA) at the end of the year ensured that this growth would continue. The United States imported 2,350 billion cubic feet of natural gas, a record amount (Figure FE2). Although export trade with Mexico fell sharply, industry observers anticipate that it will rebound eventually (1997/98) and that Mexico may become a significant gas market for the United States.

Some of the highlights of 1993 for U.S. natural gas imports and exports were:

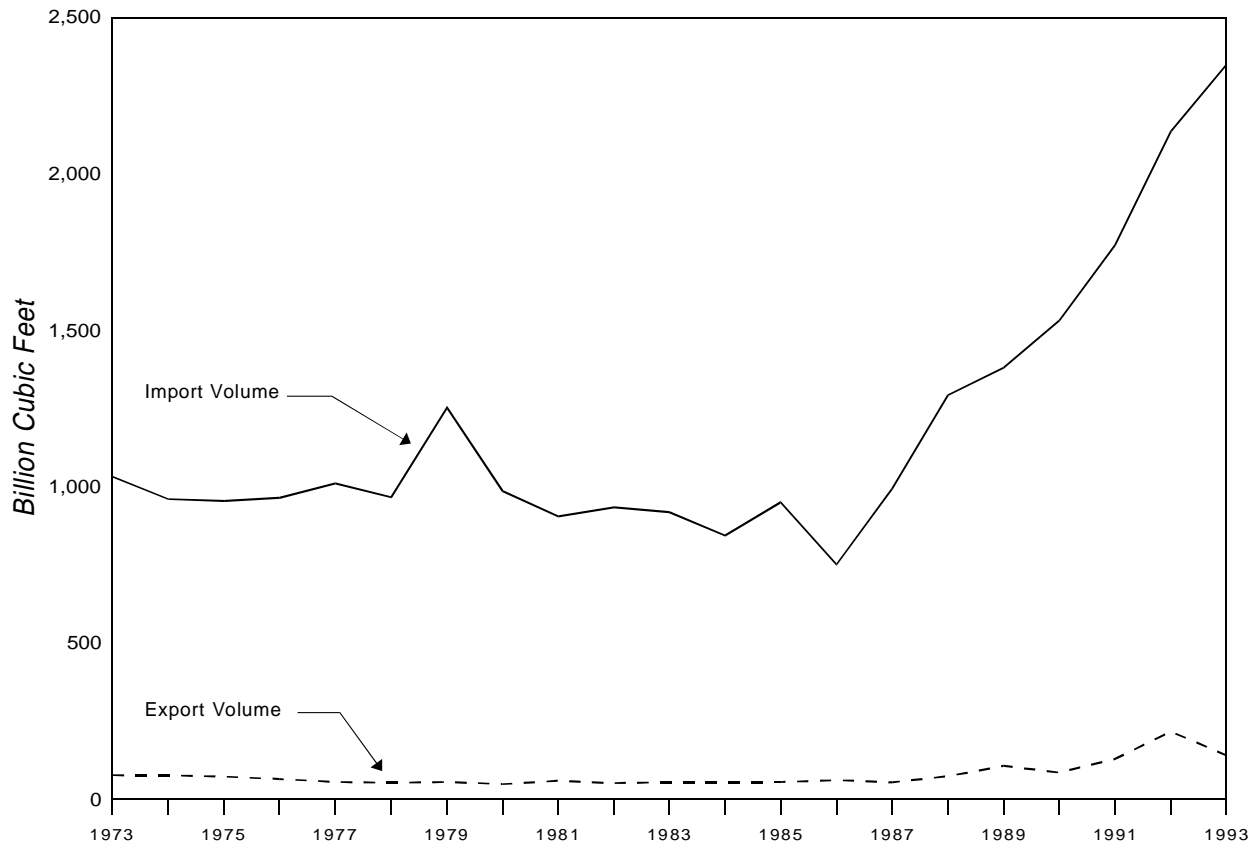
- Net imports rose for the seventh consecutive year, reaching 11 percent of U.S. natural gas consumption (Table FE1).
- Pipeline imports from Canada continued their steady growth to a new record level of 2,267 billion cubic feet.

**Figure FE1. Flow of Natural Gas Imports and Exports, 1993**  
(Billion Cubic Feet)



Source: Energy Information Administration, Form FPC-14, "Annual Report for Importers and Exporters of Natural Gas"

**Figure FE2. Total Natural Gas Imports and Exports, 1973-1993**



Source: Energy Information Administration, Form FPC-14, "Annual Report for Importers and Exporters of Natural Gas"

- The Canadian National Energy Board (NEB) revoked its ban on short-term exports to California effective November 1, 1993, and they rose markedly in November and December.<sup>1</sup>
- In a reversal of the 1992 market activity when exports to Mexico were a record 96 billion cubic feet, they plummeted to 40 billion cubic feet in 1993. Much of this drop can be attributed to the slump in the Mexican economy.
- For the first time since 1984, the United States imported gas from Mexico--2 billion cubic feet in December 1993. U.S. imports of Mexican gas have continued into 1994.
- Imports of liquefied natural gas (LNG) at 82 billion cubic feet in 1993 were nearly double the previous year's level. Demand for LNG also rose

during the severe winter of 1994, resulting in record volumes of LNG being delivered into the U.S. Northeast.

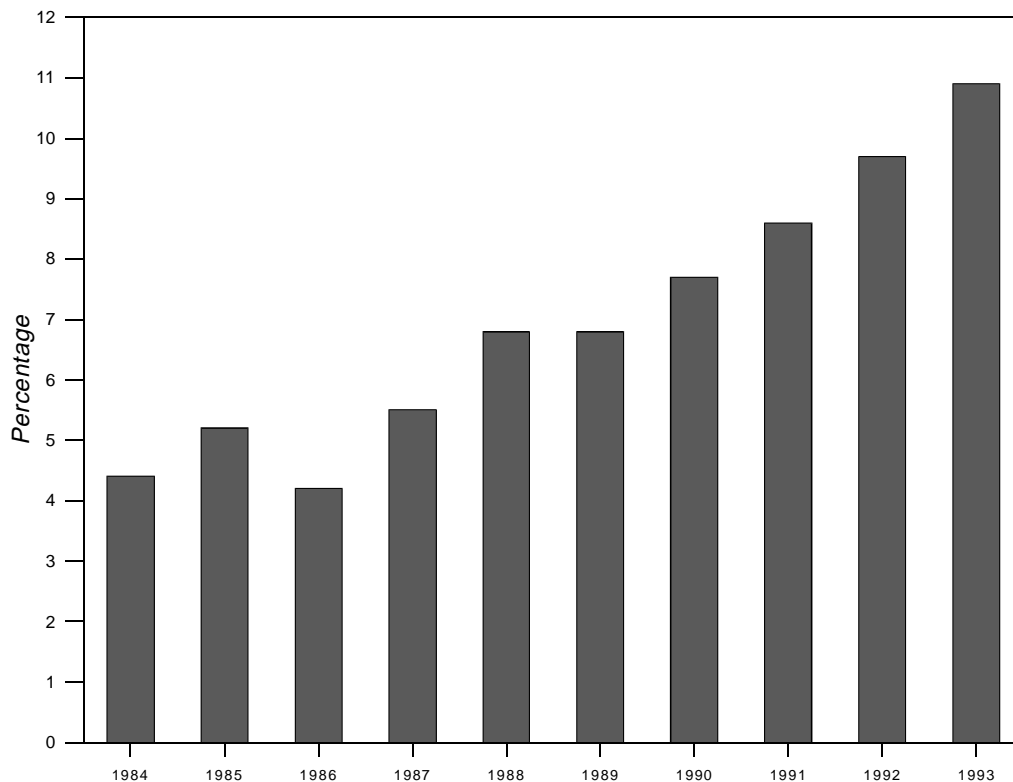
## Trade with Canada

### Imports

In 1993, pipeline imports of natural gas from Canada reached 2,267 billion cubic feet, a record level for the sixth consecutive year (Tables FE2 and FE4). The price of Canadian pipeline imports increased from 1992 to 1993, up 10 percent to \$2.02 per thousand cubic feet, the highest price since 1986. Although the growth in Canadian imports has been steady, it slowed to 8

<sup>1</sup> Energy Information Administration, *Natural Gas 1994: Issues and Trends* (July 1994).

**Figure FE3. Net Imports as a Percentage of Total Consumption, 1984-1993**



Source: Energy Information Administration, Form FPC-14, "Annual Report for Importers and Exporters of Natural Gas"

percent from 1992 to 1993, compared to a 23-percent rise from 1991 to 1992. Net imports represented 11 percent of U.S. natural gas consumption in 1993, indicating an increasing reliance on Canadian gas (Figure FE3).

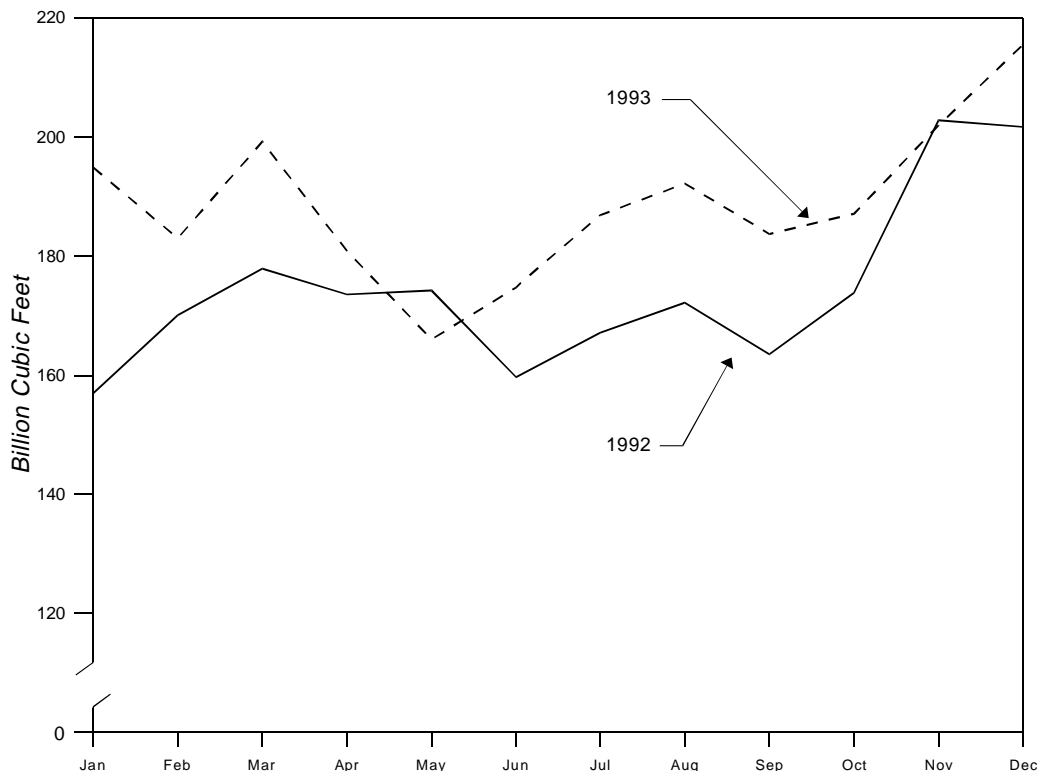
Canadian gas imports are marketed in the United States primarily in four geographical areas: the Northeast, the Midwest, the Pacific Northwest, and California. Imports to the Northeast rose from 1992 to 1993. There are two reasons that may account for the increase. The Iroquois system is fully operational and several new nonutility generator (NUG's) projects are using Canadian gas. The Pacific Northwest also showed an increase in Canadian imports as the region experienced strong economic growth.<sup>2</sup>

<sup>2</sup> *Natural Gas* (May 1994).

Increases in gas imports were more modest in the Midwest. Future growth may depend on adding capacity to the existing pipeline systems. At present, only Northern Border Pipeline Co. plans to expand capacity from Canada into the Midwest market. The planned additional capacity is 310 million cubic feet per day, and the planned in-service date is late 1997.

The major natural gas market development in California was the resolution of differences between the California Public Utilities Commission (CPUC) and Canada's National Energy Board (NEB). A controversy was triggered by the CPUC's adoption of new natural gas procurement rules, including a capacity release program on the facilities of the Pacific Gas Transmission Company (PGT), effective August 1,

**Figure FE4. Monthly Canadian Natural Gas Imports, 1992-1993**



Source: Energy Information Administration, Form FPC-14, "Annual Report for Importers and Exporters of Natural Gas"

1991. The Canadian NEB responded by prohibiting exports to northern California except under long-term contracts with Alberta and Southern Gas Corp., Ltd. The NEB prohibition was intended to prevent short-term (and lower priced) exports from displacing the long-term supplies already under contract.

During 1993, prices for short-term imports from Canada increased. The NEB revoked its orders on this matter effective November 1, 1993. Canadian producers can now sell directly to local distribution companies and other end users on the PGT system.<sup>3</sup> November 1 was also the in-service date for the PGT/Pacific Gas and Electric pipeline expansion project. This project added

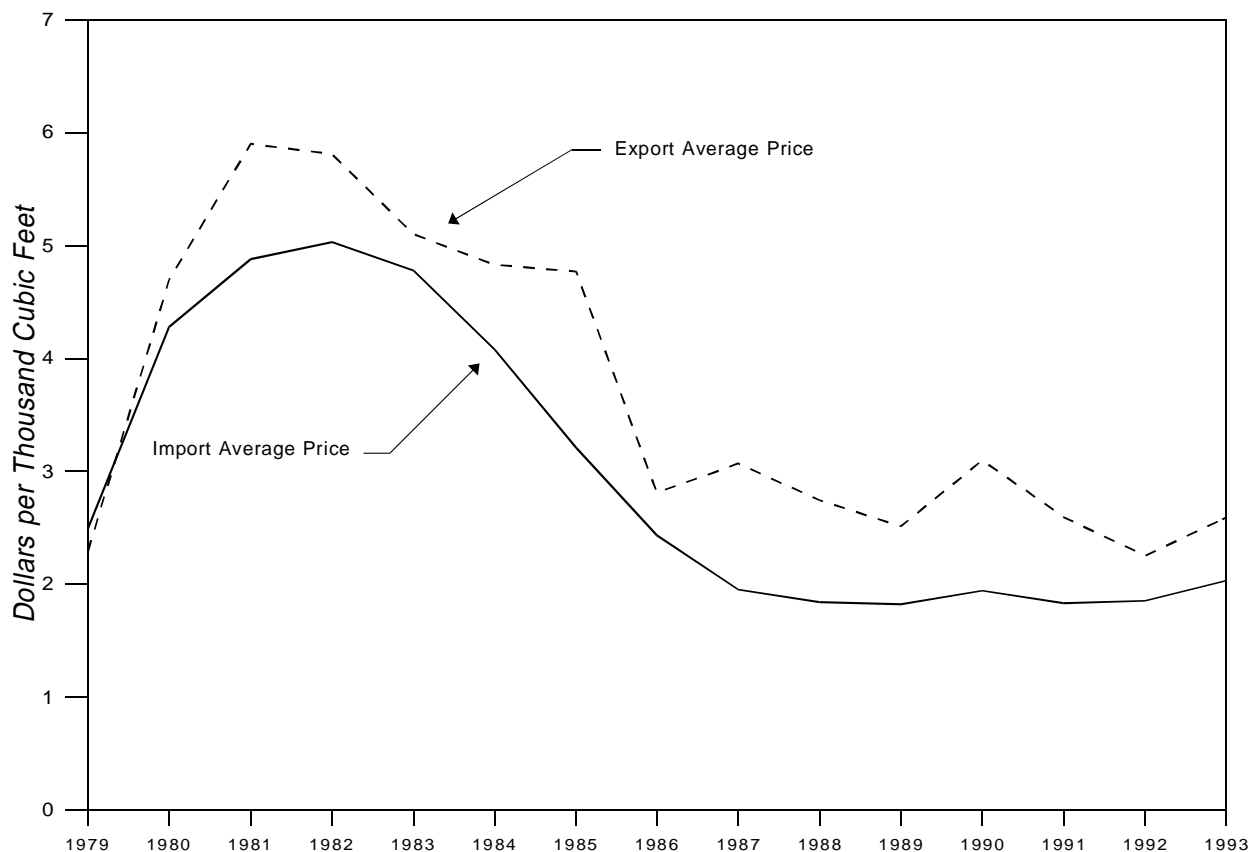
capacity of 903 million cubic feet per day into the PGT system (755 to California and 148 to the Pacific Northwest region). Due to these events, the short-term market for Canadian gas imports in California is expected to grow.

There are currently no totally new pipeline systems scheduled to be built between the United States and Canada during the next two years. However, there are projects planned for existing systems which will increase capacity. During the period from 1987 to the present and with projections through 1996, available pipeline capacity between the two nations will have nearly doubled.<sup>4</sup>

<sup>3</sup> *Natural Gas* (May 1994).

<sup>4</sup> Office of Fossil Energy, U.S. Department of Energy, *North American Natural Gas Pipeline Projects* (May 1994).

**Figure FE5. Average Price of U.S. Natural Gas Imports and Exports, 1979-1993**



Source: Energy Information Administration, Form FPC-14, "Annual Report for Importers and Exporters of Natural Gas"

## Exports

Exports of gas from the United States into Canada fell sharply from 1992's unusually high level of 68 billion cubic feet to 45 billion cubic feet in 1993 (Table FE3). Due to construction problems during 1992 on the TransCanada PipeLines system, the only pipeline system that crosses Canada from its western supply areas to the east, Canada increased its imports of U.S. gas. By 1993 these problems had been corrected and thus U.S. exports dropped.

Natural gas trading between the United States and Canada frequently includes backhaul arrangements. A backhaul transaction occurs when a transporting pipeline redelivers gas at a point upstream from the point of receipt. For example, a transaction could be made by a pipeline to move gas downstream from Canada into a U.S. receipt point. Prior to completing this transaction,

the pipeline could make a new arrangement to redeliver the gas in Canada before moving it down through the border. Since this type of transaction does not result in the gas actually crossing the border, gas movements via backhaul are not included in the tables in this report. This article is based on data reported on a custody (physical movements) basis.

The U.S. Department of Energy, Office of Fossil Energy, as part of its regulatory oversight responsibilities, also collects and reports natural gas import and export data. Data are reported to that Office on an equity (sales) basis. Their reports include natural gas sales by backhaul arrangements. U.S. exports to Canada for 1993 reported in the Office of Fossil Energy report, *Natural Gas Imports and Exports, Fourth Quarter 1993*, were 50 billion cubic feet, compared to 45 billion cubic feet in this report.

## Trade with Mexico

Exports of natural gas from the United States into Mexico fell sharply from 96 billion cubic feet in 1992 to 40 billion cubic feet in 1993, a 59-percent drop (Table FE5). Higher prices for natural gas, coupled with Mexico's slumping economy, contributed to sharply curtailed demand. With the passage of the North American Free Trade Agreement (NAFTA) and the reorganizing and downsizing of Petroleos Mexicanos (Pemex), the Mexican energy agency, trade with Mexico has become very responsive to economic changes.

During 1993, about half of the demand for gas in Mexico came from Pemex, principally for use in the petrochemical business. Industry observers expect that demand for gas in Mexico will rise in the long term as industrial markets expand, new electric generating plants are built, and oil-fired electric generating plants are converted to gas in order to satisfy environmental requirements.<sup>5</sup> In the short term, there is little incentive for Mexican consumers to switch from lower cost high sulfur fuel oil to higher cost natural gas.

In a surprising development, for the first time since 1984 the United States imported gas from Mexico--2 billion cubic feet in December 1993. The United States imported 4.3 billion cubic feet of gas during the first quarter of 1994.

Southern California Gas Co. (SoCalGas) plans to construct a pipeline at the U.S./Mexico border to connect with facilities to be built in Mexico. The project, known as Project Vecinos, is a joint venture with San Diego Gas and Electric.<sup>6</sup> The gas would be exported for electric generation and other markets in Baja California Norte, Mexico.<sup>7</sup> Other proposed pipeline projects between the two nations, together with Project Vecinos, could add capacity of up to 1,795 million cubic feet per day by 1998.<sup>8</sup>

## Liquefied Natural Gas

Natural gas can be transmitted in a vapor state via pipeline or in a liquid form, liquefied natural gas (LNG). Liquefaction makes overseas transportation possible. The volume of natural gas is greatly reduced when converted from the vapor state to liquid form. A 600-to-1 volume reduction is achieved by lowering the temperature of natural gas to approximately minus 260 degrees Fahrenheit. During 1993, the United States imported LNG from Algeria and exported LNG to Japan. Algerian LNG imports represented 3 percent of U.S. gas imports, while LNG exports to Japan represented 40 percent of U.S. natural gas exports.

Approximately 62 percent of the LNG imported from Algeria was delivered to the Distrigas Corporation receiving terminal located in Everett, Massachusetts, just north of Boston. The remaining 38 percent was delivered to the Pan National Gas Sales terminal in Lake Charles, Louisiana. LNG imports totaled 82 billion cubic feet in 1993, nearly double those in 1992. This dramatic increase is attributed to a willingness by Algeria to adjust its rates so American companies can price the product more competitively in their markets and a readiness on the part of the Federal Energy Regulatory Commission to authorize more market-responsive rates for LNG providers. Additionally, greater flexibility in contracts has caused LNG to become increasingly used as baseload supply as opposed to a more traditional peak demand supply.<sup>9</sup>

Another LNG receiving terminal, located at Cove Point, Maryland, and owned by Columbia Gas, has not been in operation since 1980, mainly because prices were not competitive. Currently, Columbia plans to reopen the Cove Point terminal in late 1995 as a peaking facility, using existing storage, gasification, and pipeline facilities. Cove Point needs to build a liquefier to process pipeline gas for liquid storage. When fully operational the facility will have 5 billion cubic feet in storage and delivery capacity of 1.2 billion cubic feet per day on 2 hours' notice.<sup>10</sup>

<sup>5</sup> *Natural Gas* (May 1994).

<sup>6</sup> *Pipeline and Gas Journal* (May 1994).

<sup>7</sup> *Foster Natural Gas Report* (February 24, 1994).

<sup>8</sup> Office of Fossil Energy, U.S. Department of Energy, *North American Natural Gas Pipeline Projects* (May 1994).

<sup>9</sup> *Natural Gas Intelligence* (June 27, 1994).

<sup>10</sup> *Natural Gas Intelligence* (May 9, 1994).

For future sources of LNG, Distrigas is considering importing from Nigeria in the late 1990's. Also, Cabot LNG Corp., the parent company of Distrigas of Massachusetts Corp., is studying the feasibility of developing a LNG export project in the Caribbean, based in the Republic of Trinidad and Tobago. The gas would come from the Republic's East Coast Marine reserves. Potential markets for this LNG are the U.S. Northeast, the Caribbean, and Western Europe. A potential LNG supply source is Venezuela's Cristobal Colon LNG project which is expected to begin exporting by 2000.<sup>11</sup>

Phillips Alaska Natural Gas Corp. and Marathon Oil Co. exported LNG from the Kenai Peninsula in south-

ern Alaska to Japan during 1993. These exports totaled 56 billion cubic feet, continuing the flat trend in LNG exports. However, with the commissioning of two new larger LNG tankers in 1993, and revised sales contracts, the annual export volumes could reach 64 billion cubic feet.

A proposal for shipping LNG from Alaska to Pacific Rim markets is the Yukon-Pacific project, which would transport natural gas from the Alaskan North Slope to Valdez, Alaska, for overseas shipment. Nippon Oil Co., one of the largest importers of LNG in Japan, is considering LNG imports from Alaska in an attempt to diversify its supply sources.<sup>12</sup>

<sup>11</sup> *Natural Gas Week* (February 28, 1994).

<sup>12</sup> *Natural Gas Week* (April 4, 1994).

**Table FE1. Historical Summary of U.S. Natural Gas Net Imports, 1955-1993**  
(Million Cubic Feet)

Year	Total Imports	Total Exports	Net Imports	Total Consumption	Net Imports as Percentage of Total Consumption
1955	10,888	31,029	-	8,693,657	-
1956	10,380	35,963	-	9,288,865	-
1957	37,941	41,655	-	9,846,139	-
1958	135,797	38,719	97,078	10,302,608	0.9
1959	133,990	18,413	115,577	11,321,181	1.0
1960	155,646	11,332	144,314	11,966,537	1.2
1961	218,860	10,747	208,113	12,489,268	1.7
1962	401,534	15,814	385,720	13,266,513	2.9
1963	406,204	16,957	389,247	13,970,229	2.8
1964	443,326	19,603	423,723	14,813,808	2.9
1965	456,394	26,132	430,262	15,279,716	2.8
1966	479,780	24,639	455,141	16,452,403	2.8
1967	564,226	81,614	482,612	17,388,360	2.8
1968	651,885	93,745	558,140	18,632,062	3.0
1969	726,951	51,304	675,647	20,056,240	3.4
1970	820,780	69,813	750,967	21,139,386	3.6
1971	934,548	80,212	854,336	21,793,454	3.9
1972	1,019,496	78,013	941,483	22,101,452	4.3
1973	1,032,901	77,169	955,732	22,049,363	4.3
1974	959,284	76,789	882,495	21,223,133	4.2
1975	953,008	72,675	880,333	19,537,593	4.5
1976	963,768	64,711	899,057	19,946,496	4.5
1977	1,011,002	55,626	955,376	19,520,581	4.9
1978	965,545	52,532	913,013	19,627,478	4.7
1979	1,253,383	55,673	1,197,710	20,240,761	5.9
1980	984,767	48,731	936,036	19,877,293	4.7
1981	903,949	59,372	844,577	19,403,858	4.4
1982	933,336	51,728	881,608	18,001,055	4.9
1983	918,407	54,639	863,768	16,834,914	5.1
1984	843,060	54,753	788,307	17,950,524	4.4
1985	949,715	55,268	894,447	17,280,943	5.2
1986	750,449	61,271	689,178	16,221,296	4.2
1987	992,532	54,020	938,512	17,210,809	5.5
1988	1,293,812	73,638	1,220,174	18,029,588	6.8
1989	1,381,520	106,871	1,274,648	18,800,830	6.8
1990	1,532,259	85,565	1,446,694	18,716,269	7.7
1991	1,773,313	129,244	1,644,068	19,129,403	8.6
1992	2,137,504	216,282	1,921,222	19,726,211	9.7
1993	2,350,115	140,183	2,209,931	<sup>a</sup> 20,219,000	10.9

<sup>a</sup> Preliminary data.

- = Not applicable.

Notes: Totals may not equal sum of components due to independent rounding. Geographic coverage is the continental United States including Alaska.

Source: Total Consumption: *Natural Gas Annual 1990 Volume 2* for 1955 through 1988; *Natural Gas Monthly July 1994* for 1989 through 1993. Net imports: 1955-1971: Federal Power Commission, informally collected by letter. 1972-1993: Energy Information Administration, Form FPC-14, "Annual Report for Importers and Exporters of Natural Gas."



**Table FE2. Summary of U.S. Natural Gas Imports, 1992-1993**

Source	Volume			Average Btu/ Cubic Foot		Revenue (thousand dollars)		Average Price			Average Price		
	(million cubic feet)		Percent Change	1992	1993	1992	1993	(dollars/ thousand cubic feet)		Percent Change	(dollars/ million Btu)		Percent Change
	1992	1993						1992	1993		1992	1993	
<b>Pipeline</b>													
Canada	2,094,387 <sup>a</sup>	2,266,751	8.2	1,009	1,018	3,849,812	4,587,570	1.84	2.02	9.8	1.82	1.99	9.3
Mexico	0	1,678	-	0	1,016	0	3,263	0.00	1.94	-	0.00	1.91	-
Total	2,094,387	2,268,429	8.3	1,009	1,018	3,849,812	4,590,833	1.84	2.02	9.8	1.82	1.99	9.3
<b>LNG</b>													
Algeria	43,116	81,685	89.5	1,099	1,091	109,596	179,374	2.54	2.20	-13.4	2.31	2.01	-13.0
Grand Total	2,137,504 <sup>a</sup>	2,350,115	9.9	1,011	1,020	3,959,408	4,770,207	1.85	2.03	9.7	1.83	1.99	8.7

<sup>a</sup> During 1993, Michigan Consolidated Gas Co. imported, on an equivalent Btu basis, 728,697 thousand cubic feet of natural gas from Canada as part of an energy exchange for ethane exported to Canada. There was no cost reported. This exchange volume is excluded in calculating the average prices but included in the total volume reported.

Notes: Totals may not equal sum of components due to independent rounding. Geographic coverage is the continental United States including Alaska.

Source: Energy Information Administration, Form FPC-14, "Annual Report for Importers and Exporters of Natural Gas."

**Table FE3. Summary of U.S. Natural Gas Exports, 1992-1993**

Source	Volume			Average Btu/ Cubic Foot		Cost (thousand dollars)		Average Price			Average Price		
	(million cubic feet)		Percent Change	1992	1993	1992	1993	(dollars/ thousand cubic feet)		Percent Change	(dollars/ million Btu)		Percent Change
	1992	1993						1992	1993		1992	1993	
<b>Pipeline</b>													
Canada	67,777	44,518	-34.3	1,011	1,014	124,343	95,304	1.83	2.14	16.9	1.81	2.11	16.6
Mexico	95,973	39,676	-58.7	1,028	1,027	182,760	80,002	1.90	2.02	6.3	1.85	1.96	5.9
Total	163,750	84,195	-48.6	1,021	1,020	307,104	175,307	1.88	2.08	10.6	1.84	2.04	10.9
<b>LNG</b>													
Japan	52,532	55,989	6.6	1,010	1,009	180,332	187,162	3.43	3.34	-2.6	3.40	3.31	-2.6
Grand Total	216,282	140,183	-35.2	1,018	1,016	487,436	362,469	2.25	2.59	15.1	2.21	2.55	15.4

Notes: Totals may not equal sum of components due to independent rounding. Geographic coverage is the continental United States including Alaska.

Source: Energy Information Administration, Form FPC-14, "Annual Report for Importers and Exporters of Natural Gas."

**Table FE4. Historical Summary of U.S. Natural Gas Imports, 1955-1993**  
(Volume in Million Cubic Feet; Average Price in Dollars per Thousand Cubic Feet)

Year	Imports from Canada		Imports from Mexico Pipeline	Imports from Algeria LNG	Imports from Indonesia LNG	Total Imports <sup>a</sup>	Average Price
	Pipeline	LNG					
1955	10,881	0	7	0	0	10,888	NA
1956	10,374	0	6	0	0	10,380	NA
1957	20,971	0	16,970	0	0	37,941	NA
1958	89,586	0	46,211	0	0	135,797	NA
1959	83,061	0	50,929	0	0	133,990	NA
1960	108,657	0	46,989	0	0	155,646	NA
1961	167,104	0	51,756	0	0	218,860	NA
1962	350,438	0	51,096	0	0	401,534	NA
1963	356,455	0	49,749	0	0	406,204	NA
1964	390,721	0	52,605	0	0	443,326	NA
1965	404,686	0	51,708	0	0	456,394	NA
1966	430,189	0	49,591	0	0	479,780	NA
1967	513,255	0	50,971	0	0	564,226	NA
1968	604,462	0	47,423	NA	0	651,885	NA
1969	680,106	0	46,845	NA	0	726,951	NA
1970	778,687	NA	41,336	757	0	820,780	NA
1971	910,926	1,500	20,689	1,433	0	934,548	NA
1972	1,009,093	230	8,140	2,032	0	1,019,496	0.31
1973	1,027,216	667	1,632	3,388	0	1,032,901	0.35
1974	959,063	0	222	0	0	959,284	0.55
1975	948,115	0	0	4,893	0	953,008	1.21
1976	953,613	0	0	10,155	0	963,768	1.72
1977	996,723	572	2,384	11,324	0	1,011,002	1.98
1978	881,123	0	0	84,422	0	965,545	2.13
1979	1,000,775	0	0	252,608	0	1,253,383	2.49
1980	796,507	0	102,410	85,850	0	984,767	4.28
1981	762,107	6	105,013	36,824	0	903,949	4.88
1982	783,407	0	94,794	55,136	0	933,336	5.03
1983	711,923	0	75,361	131,124	0	918,407	4.78
1984	755,368	0	51,502	36,191	0	843,060	4.08
1985	926,056	0	0	23,659	0	949,715	3.21
1986	748,780	0	0	0	1,669	750,449	2.43
1987	992,532	0	0	0	0	992,532	1.95
1988	1,276,322	0	0	17,490	0	1,293,812	1.84
1989	1,339,357	0	0	42,163	0	1,381,520	1.82
1990	1,448,065	0	0	84,193	0	1,532,259	1.94
1991	1,709,716	0	0	63,596	0	1,773,313	1.83
1992	2,094,387	0	0	43,116	0	2,137,504	1.85
1993	<sup>b</sup> 2,266,751	0	1,678	81,685	0	<sup>b</sup> 2,350,115	2.03

<sup>a</sup> Volumes reported for 1966 through 1993 are on a pressure base of 14.73 pounds persquare inch absolute and 60 degrees Fahrenheit. Volumes for 1955 through 1965 are as reported.

<sup>b</sup> During 1993 Michigan Consolidated Gas Co. imported, on an equivalent Btu basis, 728,697 thousand cubic feet of natural gas from Canada as part of an energy exchange for ethane exported to Canada. There was no cost reported. This exchange volume is excluded in calculating the average prices, but included in the total volume imported.

NA = Not available.

Notes: Totals may not equal sum of components due to independent rounding. Geographic coverage is the continental United States including Alaska.

Source: 1955-1971: Federal Power Commission, informally collected by letter. 1972-1993: Energy Information Administration, Form FPC-14, "Annual Report for Importers and Exporters of Natural Gas."

**Table FE5. Historical Summary of U.S. Natural Gas Exports, 1955-1993**  
(Volume in Million Cubic Feet; Average Price in Dollars per Thousand Cubic Feet)

Year	Exports to Canada Pipeline	Exports to Mexico Pipeline	Exports to Japan LNG	Total Exports <sup>a</sup>	Average Price
1955	11,467	19,562	0	31,029	NA
1956	16,819	19,144	0	35,963	NA
1957	30,867	10,788	0	41,655	NA
1958	32,129	6,590	0	38,719	NA
1959	11,739	6,674	0	18,413	NA
1960	5,759	5,573	0	11,332	NA
1961	5,577	5,170	0	10,747	NA
1962	5,574	10,240	0	15,814	NA
1963	6,879	10,078	0	16,957	NA
1964	9,763	9,840	0	19,603	NA
1965	17,979	8,153	0	26,132	NA
1966	20,281	4,358	0	24,639	NA
1967	70,456	11,158	0	81,614	NA
1968	81,647	12,098	0	93,745	NA
1969	34,931	13,391	2,982	51,304	NA
1970	10,878	14,678	44,257	69,813	NA
1971	14,349	15,632	50,231	80,212	NA
1972	15,553	14,579	47,882	78,013	0.51
1973	14,824	13,999	48,346	77,169	0.54
1974	13,263	13,268	50,258	76,789	0.72
1975	10,219	9,454	53,002	72,675	1.25
1976	7,506	7,425	49,779	64,711	1.55
1977	31	3,940	51,655	55,626	1.92
1978	66	4,033	48,434	52,532	2.13
1979	76	4,308	51,289	55,673	2.29
1980	113	3,886	44,732	48,731	4.70
1981	106	3,337	55,929	59,372	5.90
1982	162	1,705	49,861	51,728	5.81
1983	136	1,646	52,857	54,639	5.10
1984	127	1,786	52,840	54,753	4.92
1985	178	2,207	52,883	55,268	4.77
1986	9,203	1,896	50,172	61,271	2.81
1987	3,297	2,125	48,599	54,020	3.07
1988	19,738	2,327	51,573	73,638	2.74
1989	38,443	17,004	51,424	106,871	2.51
1990	17,359	15,659	52,546	85,565	3.10
1991	14,791	60,448	54,005	129,244	2.59
1992	67,777	95,973	52,532	216,282	2.25
1993	44,518	39,676	55,989	140,183	2.59

<sup>a</sup> Volumes reported for 1966 through 1993 are on a pressure base of 14.73 pounds per square inch absolute and 60 degrees Fahrenheit. Volumes for 1955 through 1965 are as reported.

NA = Not available.

Notes: Totals may not equal sum of components due to independent rounding. Geographic coverage is the continental United States including Alaska.

Source: 1955-1971: Federal Power Commission, informally collected by letter. 1972-1993: Energy Information Administration, Form FPC-14, "Annual Report for Importers and Exporters of Natural Gas."

**Table FE6. U.S. Natural Gas Imports, 1992-1993**

Importing Companies	Docket Number	Point of Entry		Volume		Percent Change
		City	State	(thousand cubic feet)		
				1992	1993	
Pipeline Imports from Canada						
Access Energy Corp	FE90-81-NG et al.	Eastport	ID	692,479	67,933	-90.2
Ag-energy L P	FE92-22-NG	Waddington	NY	0	712,043	-
AIG Trading Corp	FE93-49-NG	Detroit	MI	0	138,507	-
	FE93-49-NG	Niagara Falls	NY	0	60,259	-
	FE93-49-NG	Noyes	MN	0	611,583	-
	FE93-49-NG et al.	St Clair	MI	0	1,323,770	-
American Hunter Exploration Lt	FE92-27-NG et al.	Eastport	ID	12,714,327	6,074,549	-52.2
	FE92-27-NG et al.	Sumas	WA	671,428	787,638	17.3
Amoco Canada Marketing Corp	FE92-33-NG et al.	Eastport	ID	585,261	3,540,388	504.9
	FE92-33-NG	Noyes	MN	0	4,322,491	-
Amoco Energy Trading Co	FE90-35-NG	Eastport	ID	1,149,555	0	-
	FE90-35-NG	Niagara Falls	NY	274,572	0	-
	FE92-91-NG	Port Of Morgan	MT	115,554	0	-
ANR Gas Supply Co	FE93-105-NG	Noyes	MN	0	314,744	-
ANR P L Co	FE92-134-NG et al.	Noyes	MN	58,350,941	80,065,482	37.2
Aquila Energy Marketing Corp.	ERA87-17-NG	Babb	MT	375,033	0	-
	ERA87-17-NG	Niagara Falls	NY	240,726	0	-
	ERA87-17-NG	Port Of Morgan	MT	61,175	0	-
Arco Products Company	FE92-57-NG et al.	Sumas	WA	0	3,752,726	-
Atlantic Richfield Company	FE92-57 et al.	Sumas	WA	3,194,280	0	-
Bay State Gas Co	FE93-76-NG	Niagara Falls	NY	0	376,370	-
Boston Gas Company	FE89-38-NG et al.	Waddington	NY	9,523,048	12,764,387	34.0
Boundary Gas Inc	ERA88-64-NG et al.	Niagara Falls	NY	31,842,435	33,715,331	5.9
Bow Valley Energy Marketing	ERA87-07-NG	Noyes	MN	0	8,569	-
	ERA87-07-NG	Port Of Morgan	MT	0	178,463	-
Bridgegas U.S.A. Inc	FE93-47-NG et al.	Eastport	ID	92,316	454,243	392.1
	FE93-47-NG	Port Of Morgan	MT	0	333,034	-
	FE93-47-NG et al.	Sumas	WA	112,142	14,814	-86.8
Broad Street Oil And Gas Co.	FE90-105-NG	Eastport	ID	0	1,520,182	-
Brooklyn Union Gas Co Et Al	FE86-48-NG et al.	Niagara Falls	NY	3,369,453	17,217,477	411.0
	FE91-11-NG et al.	Waddington	NY	95,000,849	127,647,723	34.4
Brymore Energy Inc	FE91-17-NG et al.	Eastport	ID	900,522	0	-
	FE91-17-NG	Niagara Falls	NY	85,361	0	-
	FE93-61-NG et al.	Noyes	MN	1,381,335	288,154	-79.1
	FE91-17-NG	St Clair	MI	42,637	0	-
	FE93-61-NG et al.	Sumas	WA	87,105	21,343	-75.5
	FE91-17-NG	Waddington	NY	16,650	0	-
Canada Imperial Oil Limited	FE92-128-NG	Eastport	ID	0	608,092	-
Canadian Hydro. Mktg. (US)	FE92-155-NG et al.	Babb	MT	2,393,160	3,851,562	60.9
	FE92-155-NG et al.	Eastport	ID	863,732	2,352,497	172.4
	FE92-155-NG et al.	Sumas	WA	6,430,159	8,791,312	36.7
CanadianOxy Marketing Inc	FE90-98-NG	Babb	MT	134,606	0	-
	FE90-98-NG	Noyes	MN	4,227,064	0	-
	FE90-98-NG	Port Of Morgan	MT	73,412	0	-
Canstates Petroleum Marketing	FE90-102-NG et al.	Waddington	NY	172,523	39,327	-77.2
Canwest Gas Supply USA Inc	FE90-95-NG	Eastport	ID	0	1,163,948	-
	FE90-95-NG et al.	Sumas	WA	60,509,963	51,049,075	-15.6
Cascade Nat Gas Corp	FE93-48-NG et al.	Eastport	ID	0	1,640,634	-
	FE93-50-NG et al.	Sumas	WA	19,203,084	20,822,833	8.4
Chevron Nat Gas Svc Inc	FE92-125-NG et al.	Eastport	ID	702,191	4,406,850	527.6
Cibola Corp.	FE91-44-NG	Babb	MT	325,963	0	-
	FE91-44-NG et al.	Port Of Morgan	MT	24,902	377,521	1,416.0
	FE91-44-NG	St Clair	MI	304,914	0	-
	FE91-44-NG	Waddington	NY	114,380	0	-
City Of Burbank, CA	FE92-36-NG	Eastport	ID	0	287,735	-
City Of Glendale, CA	FE92-37-NG	Eastport	ID	0	242,548	-
City Of Pasadena, CA	FE90-42-NG	Eastport	ID	0	266,874	-
City Of Warroad, Minnesota	FE93-08-NG	Noyes	MN	0	2,740,227	-
	FE93-113-NG	Port Of Morgan	MT	0	20,690	-
	FE90-97-NG	Warroad	MN	62,302	0	-
Coastal Gas Marketing Co	FE90-19-NG	Babb	MT	76,542	0	-
	FE92-44-NG	Detroit	MI	0	138,551	-
	FE92-44-NG et al.	Eastport	ID	3,998,968	5,363,542	34.1
	FE92-44-NG et al.	Niagara Falls	NY	1,626,337	619,061	-61.9

See footnotes at the end of table.

**Table FE6. U.S. Natural Gas Imports, 1992-1993 (Continued)**

Heating Content (million Btu)		Average Btu/ Cubic Foot		Revenue (dollars)		Average Price				Volume (barrels)	
1992	1993	1992	1993	1992	1993	(dollars/thousand cubic feet)		(dollars/million Btu)		1992	1993
						1992	1993	1992	1993		
703,888	69,020	1,016	1,016	1,177,672	117,334	1.70	1.73	1.67	1.70	-	-
0	719,042	-	1,010	0	1,982,645	-	2.78	-	2.76	-	-
0	139,832	-	1,010	0	307,485	-	2.22	-	2.20	-	-
0	60,964	-	1,012	0	133,774	-	2.22	-	2.19	-	-
0	617,608	-	1,010	0	1,232,830	-	2.02	-	2.00	-	-
0	1,337,712	-	1,011	0	2,832,046	-	2.14	-	2.12	-	-
12,941,477	6,173,505	1,018	1,016	18,939,072	10,251,527	1.49	1.69	1.46	1.66	-	-
685,381	814,109	1,021	1,034	750,563	1,384,457	1.12	1.76	1.10	1.70	-	-
599,080	3,581,302	1,024	1,012	1,100,592	7,035,334	1.88	1.99	1.84	1.96	-	-
0	4,389,435	-	1,015	0	9,573,922	-	2.21	-	2.18	-	-
1,161,151	0	1,010	-	1,496,742	0	1.30	-	1.29	-	-	-
277,043	0	1,009	-	423,876	0	1.54	-	1.53	-	-	-
117,706	0	1,019	-	181,915	0	1.57	-	1.55	-	-	-
0	319,310	-	1,015	0	714,355	-	2.27	-	2.24	-	-
58,093,433	81,303,652	996	1,015	<sup>a</sup> 57,267,263	162,610,056	0.98	2.03	0.99	2.00	-	-
382,529	0	1,020	-	422,471	0	1.13	-	1.10	-	-	-
247,707	0	1,029	-	448,350	0	1.86	-	1.81	-	-	-
66,680	0	1,090	-	109,705	0	1.79	-	1.65	-	-	-
0	3,887,831	-	1,036	0	7,428,256	-	1.98	-	1.91	-	-
3,309,275	0	1,036	-	4,999,896	0	1.57	-	1.51	-	-	-
0	384,056	-	1,020	0	807,824	-	2.15	-	2.10	-	-
9,656,235	12,965,895	1,014	1,016	27,396,941	24,529,684	2.88	1.92	2.84	1.89	-	-
31,697,447	33,679,435	995	999	83,835,757	86,346,040	2.63	2.56	2.64	2.56	-	-
0	8,569	-	1,000	0	17,098	-	2.00	-	2.00	-	-
0	178,463	-	1,000	0	354,235	-	1.98	-	1.98	-	-
92,316	454,243	1,000	1,000	138,208	822,180	1.50	1.81	1.50	1.81	-	-
0	333,034	-	1,000	0	519,849	-	1.56	-	1.56	-	-
112,142	14,814	1,000	1,000	114,255	26,517	1.02	1.79	1.02	1.79	-	-
0	1,568,834	-	1,032	0	2,822,977	-	1.86	-	1.80	-	-
3,349,977	17,227,542	994	1,001	9,020,680	44,423,343	2.68	2.58	2.69	2.58	-	-
94,357,932	127,841,110	993	1,002	262,487,197	327,394,166	2.76	2.56	2.78	2.56	-	-
917,101	0	1,018	-	1,256,312	0	1.40	-	1.37	-	-	-
86,130	0	1,009	-	120,582	0	1.41	-	1.40	-	-	-
1,404,651	296,798	1,017	1,030	1,765,486	502,916	1.28	1.75	1.26	1.69	-	-
43,063	0	1,010	-	102,920	0	2.41	-	2.39	-	-	-
90,107	21,983	1,034	1,030	129,927	53,323	1.49	2.50	1.44	2.43	-	-
16,800	0	1,009	-	23,520	0	1.41	-	1.40	-	-	-
0	608,092	-	1,000	0	1,262,460	-	2.08	-	2.08	-	-
2,441,954	3,933,602	1,020	1,021	2,526,787	5,780,167	1.06	1.50	1.03	1.47	-	-
889,673	2,402,605	1,030	1,021	1,354,248	3,800,961	1.57	1.62	1.52	1.58	-	-
6,623,503	8,978,566	1,030	1,021	9,400,587	16,427,052	1.46	1.87	1.42	1.83	-	-
134,606	0	1,000	-	127,872	0	0.95	-	0.95	-	-	-
4,270,953	0	1,010	-	6,210,134	0	1.47	-	1.45	-	-	-
74,879	0	1,020	-	105,918	0	1.44	-	1.41	-	-	-
172,965	39,327	1,003	1,000	278,384	98,040	1.61	2.49	1.61	2.49	-	-
0	1,209,434	-	1,039	0	1,999,075	-	1.72	-	1.65	-	-
62,748,833	53,120,793	1,037	1,041	74,622,897	88,771,892	1.23	1.74	1.19	1.67	-	-
0	1,671,806	-	1,019	0	4,108,096	-	2.50	-	2.46	-	-
19,958,851	21,383,372	1,039	1,027	31,993,232	40,225,594	1.67	1.93	1.60	1.88	-	-
716,937	4,536,141	1,021	1,029	1,072,175	8,266,231	1.53	1.88	1.50	1.82	-	-
330,503	0	1,014	-	287,454	0	0.88	-	0.87	-	-	-
25,168	378,758	1,011	1,003	25,420	640,237	1.02	1.70	1.01	1.69	-	-
308,878	0	1,013	-	475,666	0	1.56	-	1.54	-	-	-
115,181	0	1,007	-	173,923	0	1.52	-	1.51	-	-	-
0	296,074	-	1,029	0	426,347	-	1.48	-	1.44	-	-
0	250,309	-	1,032	0	360,444	-	1.49	-	1.44	-	-
0	266,874	-	1,000	0	384,298	-	1.44	-	1.44	-	-
0	2,781,257	-	1,015	0	5,984,707	-	2.18	-	2.15	-	-
0	21,192	-	1,024	0	47,624	-	2.30	-	2.25	-	-
62,985	0	1,011	-	266,631	0	4.28	-	4.23	-	-	-
76,542	0	1,000	-	91,850	0	1.20	-	1.20	-	-	-
0	138,267	-	998	0	389,512	-	2.81	-	2.82	-	-
3,998,968	5,455,081	1,000	1,017	5,655,595	8,321,265	1.41	1.55	1.41	1.53	-	-
1,626,337	629,644	1,000	1,017	2,829,685	1,473,884	1.74	2.38	1.74	2.34	-	-

See footnotes at the end of table.

**Table FE6. U.S. Natural Gas Imports, 1992-1993 (Continued)**

Importing Companies	Docket Number	Point of Entry		Volume		Percent Change
		City	State	(thousand cubic feet)		
				1992	1993	
Pipeline Imports from Canada						
	FE92-44-NG et al.	Noyes	MN	5,425,775	5,429,610	0.1
	FE92-44-NG	Port Of Morgan	MT	0	154,513	-
	FE92-44-NG et al.	St Clair	MI	0	252,731	-
	FE92-44-NG et al.	Sumas	WA	496,615	599,717	20.8
	FE92-44-NG et al.	Waddington	NY	3,930,974	672,234	-82.9
CoEnergy Trading Inc	FE91-120-NG et al.	St Clair	MI	1,251,019	4,581,527	266.2
Consol Edison Co Of N Y Inc	FE89-24-NG et al.	Niagara Falls	NY	10,882,219	10,792,376	-0.8
Consumers Power Co	FE88-38-NG et al.	Noyes	MN	24,447,400	29,793,319	21.9
Continental Energy Mktg. Ltd	FE91-75-NG	Massena	NY	0	830,565	-
	FE91-75-NG et al.	Niagara Falls	NY	1,285,793	2,145,412	66.9
	FE91-75-NG	St Clair	MI	24,552	0	-
	FE91-75-NG et al.	Waddington	NY	5,455,439	11,868,346	117.6
Crestar Energy Marketing Corp	FE93-04-NG	Niagara Falls	NY	0	574,047	-
	FE93-83-NG	Noyes	MN	0	908,001	-
	FE93-04-NG	Port Of Morgan	MT	0	634,918	-
CU Energy Marketing Inc	FE92-49-NG et al.	Eastport	ID	2,867,745	2,587,916	-9.8
Czar Gas Corp Inc	FE90-60-NG	Sumas	WA	1,777,000	0	-
Dartmouth Power Associates Ltd	FE93-37-NG et al.	Waddington	NY	832,933	4,203,046	404.6
Dekalb Energy Co	FE93-31-NG	Eastport	ID	0	697,201	-
	FE91-13-NG et al.	Noyes	MN	1,215,501	0	-
Development Associates	FE90-15-NG et al.	Sumas	WA	663,785	1,271,907	91.6
Direct Energy Marketing Ltd	FE92-48-NG et al.	Eastport	ID	1,812,787	296,937	-83.6
	FE92-48-NG et al.	Niagara Falls	NY	1,019,951	64,453	-93.7
	FE92-48-NG et al.	Noyes	MN	93,000	3,691	-96.0
	FE92-48-NG	Port Of Morgan	MT	0	104,948	-
Dome Petro Ltd	FE89-80-NG	Niagara Falls	NY	263,567	0	-
	FE88-47-NG	Noyes	MN	5,346,296	0	-
Elizabethtown Gas Company	FE90-25-NG et al.	Niagara Falls	NY	610,000	3,673,756	502.3
Encogen Four Partners L P	FE90-11-NG	Niagara Falls	NY	0	1,455,402	-
Encogen Northwest L P	FE91-116-NG	Sumas	WA	0	1,417,279	-
Enron Gas Marketing Inc	FE91-74-NG et al.	Eastport	ID	690,068	1,719,340	149.2
	FE89-57-NG	Noyes	MN	18,537	0	-
	FE91-74-NG et al.	Port Of Morgan	MT	5,622,755	20,757,349	269.2
	FE89-57-NG et al.	Sumas	WA	546,600	0	-
	FE89-57-NG et al.	Waddington	NY	171,852	0	-
Fulton Cogeneration Assoc.	FE90-34-NG et al.	Niagara Falls	NY	3,248,544	1,927,815	-40.7
Gasmark Inc	FE91-112-NG	Eastport	ID	1,559,431	0	-
Goetz Energy Corp	FE92-63-NG et al.	Niagara Falls	NY	4,452	63,473	1,325.7
Grand Valley Gas Co	FE91-38-NG et al.	Eastport	ID	13,332,881	5,532,853	-58.5
	FE91-38-NG et al.	Sumas	WA	36,927,198	36,044,219	-2.4
Granite State Gas Trans Inc	FE93-85-NG et al.	North Troy	VT	9,652,677	9,096,775	-5.8
	FE90-23-NG et al.	Waddington	NY	2,066,123	11,384,491	451.0
Great Falls Gas Company	FE92-104-NG et al.	Babb	MT	318,059	1,647,117	417.9
Great Plains Natural Gas Co	FE93-114-NG	Noyes	MN	0	15,189	-
	FE93-113-NG	Port Of Morgan	MT	0	19,858	-
Great West Energy Ltd	FE93-60-NG	Massena	NY	0	638,915	-
	FE93-60-NG	Port Of Morgan	MT	0	391,637	-
	FE93-60-NG	St Clair	MI	0	500,000	-
Howard Energy Co. Inc	FE92-147-NG et al.	St Clair	MI	0	559,028	-
Husky Gas Marketing Inc	FE91-16-NG	Niagara Falls	NY	246,887	0	-
	FE91-16-NG et al.	Noyes	MN	1,529,196	102,107	-93.3
	FE91-16-NG et al.	Port Of Morgan	MT	5,723,035	33,002,228	476.7
	FE91-16-NG et al.	Sumas	WA	3,325,870	3,628,024	9.1
IGI Resources Inc	FE92-59-NG et al.	Eastport	ID	743,640	2,196,629	195.4
	FE92-59-NG et al.	Sumas	WA	15,457,817	22,949,726	48.5
Indeck Oswego-Indeck Yerkes LP	FE90-108-NG	Niagara Falls	NY	0	1,672,486	-
Indeck-Oswego Limited Partners	FE89-22-NG et al.	Niagara Falls	NY	4,216,761	3,349,702	-20.6
Indeck-Yerkes Limited Partners	FE89-21-NG et al.	Niagara Falls	NY	4,248,394	3,748,467	-11.8
Inland Natural Gas Mktg Ltd	FE93-52-NG	Sumas	WA	0	351,525	-
Intalco Aluminum Corp	FE92-72-NG et al.	Sumas	WA	517,494	602,907	16.5
Interenergy Corporation	FE91-97-NG et al.	Babb	MT	45,960	452,513	884.6
Interstate Power Co	FE93-113-NG	Port Of Morgan	MT	0	40,212	-
Inverness Resources Inc	FE90-45-NG	Eastport	ID	0	233,925	-
Iowa Electric Light & Power Co	FE93-113-NG	Port Of Morgan	MT	0	167,659	-

See footnotes at the end of table.

**Table FE6. U.S. Natural Gas Imports, 1992-1993 (Continued)**

Heating Content (million Btu)		Average Btu/ Cubic Foot		Revenue (dollars)		Average Price				Volume (barrels)	
1992	1993	1992	1993	1992	1993	(dollars/thousand cubic feet)		(dollars/million Btu)		1992	1993
						1992	1993	1992	1993		
5,425,775	5,430,334	1,000	1,000	7,456,176	9,446,811	1.37	1.74	1.37	1.74	-	-
0	157,890	-	1,022	0	361,410	-	2.34	-	2.29	-	-
0	256,626	-	1,015	0	572,473	-	2.27	-	2.23	-	-
496,615	599,717	1,000	1,000	484,803	1,217,669	0.98	2.03	0.98	2.03	-	-
3,930,974	685,025	1,000	1,019	6,069,128	1,773,050	1.54	2.64	1.54	2.59	-	-
1,251,019	4,581,527	1,000	1,000	2,831,253	9,185,651	2.26	2.00	2.26	2.00	-	-
11,020,999	10,958,844	1,013	1,015	28,768,614	28,196,121	2.64	2.61	2.61	2.57	-	-
24,766,650	30,256,354	1,013	1,016	53,847,707	58,470,496	2.20	1.96	2.17	1.93	-	-
0	840,942	-	1,012	0	1,232,161	-	1.48	-	1.47	-	-
1,305,671	2,172,220	1,015	1,012	2,624,007	4,260,483	2.04	1.99	2.01	1.96	-	-
24,945	0	1,016	-	57,698	0	2.35	-	2.31	-	-	-
5,539,087	12,016,663	1,015	1,012	13,082,481	22,644,551	2.40	1.91	2.36	1.88	-	-
0	580,221	-	1,011	0	1,891,192	-	3.29	-	3.26	-	-
0	916,197	-	1,009	0	2,186,008	-	2.41	-	2.39	-	-
0	644,996	-	1,016	0	950,175	-	1.50	-	1.47	-	-
2,911,984	2,635,832	1,015	1,019	4,264,610	4,855,208	1.49	1.88	1.46	1.84	-	-
1,845,978	0	1,039	-	1,801,974	0	1.01	-	0.98	-	-	-
845,784	4,333,037	1,015	1,031	2,296,910	10,684,449	2.76	2.54	2.72	2.47	-	-
0	717,101	-	1,029	0	1,022,892	-	1.47	-	1.43	-	-
1,227,933	0	1,010	-	1,564,361	0	1.29	-	1.27	-	-	-
686,159	1,386,690	1,034	1,090	844,925	2,375,473	1.27	1.87	1.23	1.71	-	-
1,844,729	302,745	1,018	1,020	2,902,829	522,889	1.60	1.76	1.57	1.73	-	-
1,035,621	65,495	1,015	1,016	1,835,317	153,053	1.80	2.37	1.77	2.34	-	-
94,695	3,743	1,018	1,014	203,594	6,850	2.19	1.86	2.15	1.83	-	-
0	106,894	-	1,019	0	154,989	-	1.48	-	1.45	-	-
265,491	0	1,007	-	481,065	0	1.83	-	1.81	-	-	-
5,414,711	0	1,013	-	10,217,331	0	1.91	-	1.89	-	-	-
609,690	3,671,272	999	999	1,472,635	10,410,955	2.41	2.83	2.42	2.84	-	-
0	1,493,471	-	1,026	0	4,155,711	-	2.86	-	2.78	-	-
0	1,478,301	-	1,043	0	2,720,072	-	1.92	-	1.84	-	-
690,068	1,719,340	1,000	1,000	919,933	3,031,832	1.33	1.76	1.33	1.76	-	-
18,537	0	1,000	-	21,596	0	1.17	-	1.17	-	-	-
5,622,755	20,757,349	1,000	1,000	6,675,916	24,817,008	1.19	1.20	1.19	1.20	-	-
546,600	0	1,000	-	721,788	0	1.32	-	1.32	-	-	-
171,852	0	1,000	-	271,566	0	1.58	-	1.58	-	-	-
3,288,159	1,960,223	1,012	1,017	7,456,789	4,864,226	2.30	2.52	2.27	2.48	-	-
1,590,183	0	1,020	-	2,361,445	0	1.51	-	1.49	-	-	-
4,528	66,423	1,017	1,046	11,592	151,088	2.60	2.38	2.56	2.27	-	-
13,332,881	5,532,853	1,000	1,000	19,001,400	10,962,099	1.43	1.98	1.43	1.98	-	-
36,927,198	36,044,219	1,000	1,000	47,721,150	66,981,747	1.29	1.86	1.29	1.86	-	-
9,774,300	9,231,840	1,013	1,015	27,132,967	13,507,136	2.81	1.48	2.78	1.46	-	-
2,101,150	11,551,303	1,017	1,015	5,985,816	19,766,822	2.90	1.74	2.85	1.71	-	-
321,964	1,675,376	1,012	1,017	480,933	2,865,048	1.51	1.74	1.49	1.71	-	-
0	15,410	-	1,015	0	35,304	-	2.32	-	2.29	-	-
0	19,551	-	985	0	44,039	-	2.22	-	2.25	-	-
0	641,337	-	1,004	0	1,148,812	-	1.80	-	1.79	-	-
0	393,121	-	1,004	0	246,168	-	0.63	-	0.63	-	-
0	501,895	-	1,004	0	1,415,343	-	2.83	-	2.82	-	-
0	559,028	-	1,000	0	1,284,468	-	2.30	-	2.30	-	-
253,060	0	1,025	-	598,228	0	2.42	-	2.36	-	-	-
1,567,424	104,660	1,025	1,025	1,844,207	156,820	1.21	1.54	1.18	1.50	-	-
5,866,111	33,828,474	1,025	1,025	7,836,732	52,908,497	1.37	1.60	1.34	1.56	-	-
3,409,017	3,718,725	1,025	1,025	4,704,143	6,691,996	1.41	1.84	1.38	1.80	-	-
760,403	2,314,100	1,023	1,053	978,939	4,017,271	1.32	1.83	1.29	1.74	-	-
15,901,601	24,796,249	1,029	1,080	22,778,192	38,124,171	1.47	1.66	1.43	1.54	-	-
0	1,700,279	-	1,017	0	3,900,445	-	2.33	-	2.29	-	-
4,269,185	3,405,184	1,012	1,017	10,953,263	9,338,800	2.60	2.79	2.57	2.74	-	-
4,301,864	3,810,711	1,013	1,017	10,125,660	8,984,010	2.38	2.40	2.35	2.36	-	-
0	364,180	-	1,036	0	758,048	-	2.16	-	2.08	-	-
536,513	626,550	1,037	1,039	738,839	1,040,769	1.43	1.73	1.38	1.66	-	-
47,376	465,888	1,031	1,030	56,851	728,096	1.24	1.61	1.20	1.56	-	-
0	41,096	-	1,022	0	98,561	-	2.45	-	2.40	-	-
0	249,761	-	1,068	0	389,739	-	1.67	-	1.56	-	-
0	171,347	-	1,022	0	385,981	-	2.30	-	2.25	-	-

See footnotes at the end of table.

**Table FE6. U.S. Natural Gas Imports, 1992-1993 (Continued)**

Importing Companies	Docket Number	Point of Entry		Volume		Percent Change
		City	State	(thousand cubic feet)		
				1992	1993	
Pipeline Imports from Canada						
Iroquois Energy Management Inc	FE93-62-NG	Niagara Falls	NY	0	317,810	-
JMC Fuel Services Inc	FE91-02-NG et al.	Niagara Falls	NY	57,942	50,160	-13.4
	FE91-02-NG et al.	Waddington	NY	16,649	39,740	138.7
Jonan Gas Marketing Inc	FE93-68-NG et al.	Eastport	ID	775,546	47,662	-93.8
Kamine/Besicorp Carthage L P	FE89-48-NG	Grand Island	NY	0	388,981	-
	FE89-48-NG et al.	Niagara Falls	NY	3,217,157	194,205	-94.0
	FE89-48-NG et al.	Waddington	NY	700,056	3,241,303	363.0
Kamine/Besicorp Natural Dam LP	FE92-04-NG	Waddington	NY	0	662,737	-
Kamine/Besicorp Syracuse L P	FE92-90-NG	Grand Island	NY	0	126,999	-
Kamine/Besicorp-S Glens Falls	FE89-47-NG et al.	Noyes	MN	4,301,528	4,182,352	-2.8
KCS Energy Marketing Inc	FE93-33-NG	Grand Island	NY	0	21,085	-
	FE93-33-NG et al.	Niagara Falls	NY	1,433,210	1,995,422	39.2
	FE93-33-NG et al.	Noyes	MN	891,258	451,351	-49.4
	FE93-33-NG et al.	Waddington	NY	162,939	716,606	339.8
Kimball Energy Corp	FE91-114-NG et al.	Eastport	ID	4,361,913	7,203,397	65.1
	FE91-114-NG et al.	Sumas	WA	4,166,483	6,463,551	55.1
Lockport Energy Associates L P	FE91-42-NG et al.	Niagara Falls	NY	473,692	3,685,537	678.1
Louis Dreyfus Energy Corp	FE92-78-NG et al.	Niagara Falls	NY	1,850,580	3,755,712	103.0
	FE92-78-NG	Sumas	WA	0	71,599	-
Madison Gas & Electric Co	FE93-113-NG	Port Of Morgan	MT	0	60,163	-
Masspower Inc	FE91-86-NG et al.	Niagara Falls	NY	0	11,970	-
Megan-Racine Associates Inc	FE89-49-NG et al.	Massena	NY	3,237,577	3,393,051	4.8
Metropolitan Utilities Dist	FE93-113-NG	Port Of Morgan	MT	0	416,168	-
Michigan Consol Gas Co	FE91-94-NG et al.	Noyes	MN	7,825,991	10,497,067	34.1
Midland Cogeneration Venture	FE90-32-NG et al.	Noyes	MN	26,715,301	27,190,500	1.8
Midwest Gas Co	FE93-113-NG	Port Of Morgan	MT	0	396,510	-
Minnegasco	FE93-114-NG et al.	Noyes	MN	0	13,270,076	-
	FE93-113-NG	Port Of Morgan	MT	0	905,629	-
Minnegasco Inc	ERA87-106-000	Noyes	MN	12,551,648	0	-
Mobil Natural Gas Inc	FE91-100-NG	Babb	MT	20,585	0	-
	FE91-100-NG	Eastport	ID	0	2,590	-
	FE91-100-NG et al.	Noyes	MN	120,046	731,927	509.7
	FE91-100-NG et al.	Port Of Morgan	MT	2,746,113	10,654,707	288.0
	FE91-100-NG et al.	Sumas	WA	6,662,041	10,321,946	54.9
Mock Resources Inc	FE93-14-NG et al.	Eastport	ID	2,162,467	518,437	-76.0
	FE93-14-NG et al.	Sumas	WA	2,614,480	210,916	-91.9
Montana Power Co	FE92-139-NG et al.	Babb	MT	423,649	643,865	52.0
	FE93-96-NG et al.	Port Of Del Bonita	MT	135,427	133,020	-1.8
	FE91-39-NG et al.	Whitlash	MT	6,294,734	6,696,205	6.4
Murphy Gas Gathering Inc	FE93-117-NG	Noyes	MN	0	100,750	-
Murphy Oil Company Limited	FE92-129-NG	Noyes	MN	0	97,470	-
Nat Gas Clearinghouse	FE91-50NG et al.	Eastport	ID	628,734	1,283,073	104.1
	FE91-50-NG	Noyes	MN	0	61,080	-
	FE93-74-NG et al.	Sumas	WA	6,143,611	1,212,803	-80.3
Natl Steel Corp	ERA87-63-NG	Detroit	MI	0	6,436,763	-
Natural Gas P L Co America	FE91-09-NG et al.	Noyes	MN	52,326,477	51,933,390	-0.8
	ERA86-60-NG et al.	Port Of Morgan	MT	21,032,065	22,813,445	8.5
New England Power Co	FE90-09-NG	Waddington	NY	0	2,250,455	-
New York State Elec & Gas Corp	FE92-47-NG	Champlain	NY	0	7,080	-
	FE92-47-NG	Niagara Falls	NY	0	301,038	-
Niagara Mohawk Power Corp	FE89-33-NG et al.	Waddington	NY	13,783,029	18,415,405	33.6
Norcen Marketing Inc	FE92-97-NG	Port Of Morgan	MT	0	3,925	-
North American Resources Co	FE91-21-NG et al.	Babb	MT	3,525,241	1,243,828	-64.7
North Canadian Marketing Corp	FE90-37-NG	Babb	MT	56,146	0	-
	FE92-92-NG et al.	Eastport	ID	2,328,114	9,422,635	304.7
	FE90-37-NG	Niagara Falls	NY	1,807,018	0	-
	FE92-92-NG et al.	Noyes	MN	4,607,163	2,617,941	-43.2
	FE92-92-NG et al.	Port Of Morgan	MT	16,500,228	8,949,568	-45.8
North Jersey Energy Associates	FE89-26-NG et al.	Niagara Falls	NY	8,168,970	8,427,123	3.2
Northeast Energy Associates	FE89-26-NG et al.	Niagara Falls	NY	16,002,899	17,549,355	9.7
Northern Illinois Gas Co	FE93-114-NG	Noyes	MN	0	185,806	-
	FE93-113-NG	Port Of Morgan	MT	0	176,555	-
Northern Minnesota Util Inc	FE93-114-NG et al.	Noyes	MN	4,394,058	2,805,821	-36.2
	FE92-94-NG et al.	Warroad	MN	7,275,659	6,831,711	-6.1

See footnotes at the end of table.



**Table FE6. U.S. Natural Gas Imports, 1992-1993 (Continued)**

Heating Content (million Btu)		Average Btu/ Cubic Foot		Revenue (dollars)		Average Price				Volume (barrels)	
1992	1993	1992	1993	1992	1993	(dollars/thousand cubic feet)		(dollars/million Btu)		1992	1993
						1992	1993	1992	1993		
0	324,105	-	1,020	0	828,577	-	2.61	-	2.56	-	-
57,536	51,113	993	1,019	82,278	122,671	1.42	2.45	1.43	2.40	-	-
16,479	40,376	990	1,016	24,640	95,727	1.48	2.41	1.50	2.37	-	-
790,455	48,661	1,019	1,021	1,178,500	91,275	1.52	1.92	1.49	1.88	-	-
0	395,218	-	1,016	0	995,821	-	2.56	-	2.52	-	-
3,236,468	197,506	1,006	1,017	8,272,238	560,132	2.57	2.88	2.56	2.84	-	-
711,562	3,299,726	1,016	1,018	1,956,327	8,871,738	2.79	2.74	2.75	2.69	-	-
0	673,667	-	1,016	0	1,697,626	-	2.56	-	2.52	-	-
0	129,031	-	1,016	0	599,900	-	4.72	-	4.65	-	-
4,301,528	4,182,352	1,000	1,000	8,628,716	8,445,595	2.01	2.02	2.01	2.02	-	-
0	21,422	-	1,016	0	62,815	-	2.98	-	2.93	-	-
1,441,580	2,024,391	1,006	1,015	2,692,027	5,541,326	1.88	2.78	1.87	2.74	-	-
891,258	451,351	1,000	1,000	1,161,581	856,624	1.30	1.90	1.30	1.90	-	-
165,626	728,805	1,016	1,017	378,019	1,795,899	2.32	2.51	2.28	2.46	-	-
4,409,115	7,282,635	1,011	1,011	6,961,731	10,391,524	1.60	1.44	1.58	1.43	-	-
4,455,762	6,524,539	1,069	1,009	5,888,649	10,317,965	1.41	1.60	1.32	1.58	-	-
481,601	3,746,965	1,017	1,017	1,748,978	11,815,987	3.69	3.21	3.63	3.15	-	-
1,868,303	3,831,432	1,010	1,020	3,864,621	7,244,982	2.09	1.93	2.07	1.89	-	-
0	77,542	-	1,083	0	201,609	-	2.82	-	2.60	-	-
0	61,486	-	1,022	0	138,429	-	2.30	-	2.25	-	-
0	12,162	-	1,016	0	28,033	-	2.34	-	2.30	-	-
3,278,804	3,446,176	1,013	1,016	11,292,845	10,071,930	3.49	2.97	3.44	2.92	-	-
0	425,320	-	1,022	0	957,259	-	2.30	-	2.25	-	-
7,932,154	10,652,651	1,014	1,015	17,066,850	24,417,525	2.18	2.33	2.15	2.29	-	-
27,053,233	27,549,117	1,013	1,013	48,961,529	51,914,270	1.83	1.91	1.81	1.88	-	-
0	405,231	-	1,022	0	912,866	-	2.30	-	2.25	-	-
0	13,520,069	-	1,019	0	33,684,966	-	2.54	-	2.49	-	-
0	925,546	-	1,022	0	2,084,975	-	2.30	-	2.25	-	-
12,708,400	0	1,012	-	28,443,494	0	2.27	-	2.24	-	-	-
21,226	0	1,031	-	21,438	0	1.04	-	1.01	-	-	-
0	2,714	-	1,048	0	4,207	-	1.62	-	1.55	-	-
121,843	763,567	1,015	1,043	249,778	1,570,003	2.08	2.15	2.05	2.06	-	-
2,793,180	10,905,641	1,017	1,024	4,436,868	17,193,964	1.62	1.61	1.59	1.58	-	-
6,858,739	10,758,790	1,030	1,042	8,657,645	21,719,526	1.30	2.10	1.26	2.02	-	-
2,229,502	524,140	1,031	1,011	3,073,922	891,636	1.42	1.72	1.38	1.70	-	-
2,643,240	213,239	1,011	1,011	3,178,210	419,602	1.22	1.99	1.20	1.97	-	-
423,652	658,752	1,000	1,023	746,099	1,372,637	1.76	2.13	1.76	2.08	-	-
167,537	164,064	1,237	1,233	227,848	224,332	1.68	1.69	1.36	1.37	-	-
5,391,854	6,507,624	857	972	10,177,433	9,983,206	1.62	1.49	1.89	1.53	-	-
0	102,204	-	1,014	0	224,354	-	2.23	-	2.20	-	-
0	98,824	-	1,014	0	188,394	-	1.93	-	1.91	-	-
628,734	1,283,073	1,000	1,000	720,026	2,129,159	1.15	1.66	1.15	1.66	-	-
0	61,080	-	1,000	0	110,555	-	1.81	-	1.81	-	-
6,143,611	1,212,803	1,000	1,000	6,977,498	1,838,235	1.14	1.52	1.14	1.52	-	-
0	6,479,418	-	1,007	0	11,529,416	-	1.79	-	1.78	-	-
52,992,081	52,728,159	1,013	1,015	111,888,159	127,867,469	2.14	2.46	2.11	2.43	-	-
21,141,955	22,938,030	1,005	1,005	37,065,484	43,854,357	1.76	1.92	1.75	1.91	-	-
0	2,287,600	-	1,017	0	4,269,019	-	1.90	-	1.87	-	-
0	7,200	-	1,017	0	29,568	-	4.18	-	4.11	-	-
0	306,010	-	1,017	0	465,314	-	1.55	-	1.52	-	-
13,930,191	18,741,345	1,011	1,018	33,202,523	41,353,193	2.41	2.25	2.38	2.21	-	-
0	3,999	-	1,019	0	7,878	-	2.01	-	1.97	-	-
3,631,461	1,256,875	1,030	1,010	3,389,447	2,011,493	0.96	1.62	0.93	1.60	-	-
56,992	0	1,015	-	67,845	0	1.21	-	1.19	-	-	-
2,377,000	10,146,123	1,021	1,077	3,494,191	18,135,864	1.50	1.92	1.47	1.79	-	-
1,825,689	0	1,010	-	3,310,348	0	1.83	-	1.81	-	-	-
4,618,741	2,610,787	1,003	997	6,786,830	5,177,187	1.47	1.98	1.47	1.98	-	-
16,889,566	9,121,798	1,024	1,019	19,169,198	14,651,557	1.16	1.64	1.13	1.61	-	-
8,272,836	8,568,217	1,013	1,017	18,017,918	19,957,506	2.21	2.37	2.18	2.33	-	-
16,212,741	17,843,307	1,013	1,017	45,919,645	52,524,902	2.87	2.99	2.83	2.94	-	-
0	188,501	-	1,015	0	431,851	-	2.32	-	2.29	-	-
0	180,438	-	1,022	0	403,702	-	2.29	-	2.24	-	-
4,450,335	2,848,784	1,013	1,015	8,917,990	6,774,926	2.03	2.41	2.00	2.38	-	-
7,366,883	6,935,816	1,013	1,015	16,276,313	17,533,288	2.24	2.57	2.21	2.53	-	-

See footnotes at the end of table.

**Table FE6. U.S. Natural Gas Imports, 1992-1993 (Continued)**

Importing Companies	Docket Number	Point of Entry		Volume		Percent Change
		City	State	(thousand cubic feet)		
				1992	1993	
Pipeline Imports from Canada						
Northern Nat Gas Co	ERA82-11-NG et al.	Noyes	MN	21,736,593	16,579,267	-23.7
	ERA80-11-NG et al.	Port Of Morgan	MT	31,129,087	18,270,591	-41.3
Northern States Power Co	FE93-114-NG	Noyes	MN	0	1,179,038	-
	FE93-113-NG	Port Of Morgan	MT	0	385,313	-
Northern States Power Co.(WI)	FE91-71-NG et al.	Noyes	MN	1,771,229	11,026,652	522.5
	FE93-113-NG	Port Of Morgan	MT	0	53,754	-
Northern Utilities Inc	FE93-77-NG	Niagara Falls	NY	0	57,950	-
Northridge Gas Marketing Inc	FE93-128-NG	Babb	MT	0	2,144,110	-
	FE93-128-NG	Noyes	MN	0	6,421,580	-
	FE93-128-NG	Port Of Morgan	MT	0	120,210	-
Northridge Petro Marketing US	FE91-61-NG	Babb	MT	1,086,516	0	-
	FE91-61-NG et al.	Noyes	MN	5,605,342	0	-
Northwest Alaskan P L Co	ERA84-15-NG et al.	Eastport	ID	82,024,385	83,482,252	1.8
	ERA84-14-NG et al.	Port Of Morgan	MT	254,987,560	263,441,862	3.3
Northwest Nat Gas Co	FE92-18-NG et al.	Eastport	ID	0	2,599,876	-
	FE90-02-NG et al.	Sumas	WA	25,577,749	35,624,532	39.3
Northwest P L Corp	FE89-60-NG et al.	Eastport	ID	10,628,562	20,101,056	89.1
Northwestern Public Service Co	FE93-113-NG	Port Of Morgan	MT	0	57,785	-
Ocean State Power	FE93-127-NG et al.	Niagara Falls	NY	36,900,922	36,630,200	-0.7
Orchard Gas Corporation	FE91-87-NG et al.	Waddington	NY	1,524,761	8,858,989	481.0
Oregon Natural Gas	FE92-19-NG et al.	Eastport	ID	4,931,506	894,964	-81.8
Pac Gas & Elec Co ESBU	FE90-46-NG	Eastport	ID	0	1,297,131	-
Pac Gas & Elec Co GSBU	FE93-100-NG	Eastport	ID	0	34,559,151	-
Pacific Gas Trans Co	FE93-107-NG et al.	Eastport	ID	308,991,000	263,821,305	-14.6
Pan-Alberta Gas (U.S.) Inc	FE91-26-NG	Babb	MT	53,202	0	-
	FE93-38-NG et al.	Eastport	ID	19,215,434	4,698,084	-75.6
	FE91-26-NG	Niagara Falls	NY	1,473,106	0	-
	FE93-38-NG et al.	Port Of Morgan	MT	29,045,818	899,529	-96.9
	FE93-38-NG et al.	Sumas	WA	8,608,523	15,642,345	81.7
PanCanadian Petroleum Co	FE91-119-NG	Eastport	ID	0	1,831,639	-
	FE91-119-NG	Port Of Morgan	MT	0	1,481,422	-
Panhandle Trading Co	FE91-63-NG	Waddington	NY	0	341,940	-
Paramount Resources U.S. Inc	ERA86-57-NG	Eastport	ID	0	1,168,159	-
Pawtucket Power Associate Ltd	FE93-36-NG et al.	Waddington	NY	728,118	4,481,389	515.5
Peoples Nat Gas Co Div	FE92-133-NG et al.	Noyes	MN	1,095,835	2,476,858	126.0
Pepperell Pwr Assoc L P	FE92-112-NG et al.	Niagara Falls	NY	552,408	3,231,920	485.1
Petro Canada Hydrocarbons Inc	FE90-71-NG et al.	Sumas	WA	9,927,594	12,005,226	20.9
Poco Petro Inc	FE91-80-NG et al.	Eastport	ID	11,665,658	2,156,188	-81.5
	FE91-80-NG et al.	Noyes	MN	163,679	310,186	89.5
	FE91-80-NG	Port Of Morgan	MT	0	449,138	-
	FE91-80-NG et al.	Sumas	WA	21,704,646	25,899,932	19.3
Portland Gen Electric Corp	FE91-15-NG	Eastport	ID	781,345	0	-
	FE91-15-NG	Sumas	WA	0	20,772	-
Power City Partners L P	FE90-33-NG et al.	Massena	NY	676,482	5,228,113	672.8
Progas USA Inc	ERA86-20-NG et al.	Niagara Falls	NY	665,170	4,625,433	595.4
	FE92-50-NG et al.	Noyes	MN	13,861,958	30,571,913	120.6
	FE93-87-NG et al.	Port Of Morgan	MT	2,016,420	1,840,283	-8.7
	C189-223-001	Waddington	NY	109,391	0	-
Project Orange Associates L P	FE88-01-NG et al.	Niagara Falls	NY	3,298,532	6,468,133	96.1
Redwood Resources Inc	FE92-105-NG et al.	Eastport	ID	106,523	390,662	266.7
Renaissance Energy US Inc	FE92-149-NG et al.	Niagara Falls	NY	0	437,509	-
	FE92-149-NG	Noyes	MN	0	61,301	-
	FE92-149-NG	Port Of Morgan	MT	0	4,263,128	-
	FE92-149-NG	Waddington	NY	0	519,713	-
Salmon Resources Ltd	FE91-81-NG et al.	Babb	MT	138,472	0	-
	FE91-81-NG et al.	Eastport	ID	53,077	1,635,938	2,982.2
	FE91-81-NG et al.	Niagara Falls	NY	5,058,986	5,129,868	1.4
	FE91-81-NG	Noyes	MN	63,972	0	-
	FE92-24-NG et al.	Port Of Morgan	MT	10,769,828	10,460,630	-2.9
	FE91-89-NG et al.	Sumas	WA	2,364,577	768,819	-67.5
	FE91-81-NG	Waddington	NY	0	1,360,557	-
San Diego Gas & Electric Co.	FE92-123-NG et al.	Eastport	ID	0	3,148,687	-
Santanna Natural Gas Corp	FE90-72-NG et al.	Niagara Falls	NY	409,793	0	-
	FE90-72-NG	Noyes	MN	381,754	0	-

See footnotes at the end of table.

**Table FE6. U.S. Natural Gas Imports, 1992-1993 (Continued)**

Heating Content (million Btu)		Average Btu/ Cubic Foot		Revenue (dollars)		Average Price				Volume (barrels)	
1992	1993	1992	1993	1992	1993	(dollars/thousand cubic feet)		(dollars/million Btu)		1992	1993
						1992	1993	1992	1993		
22,003,524	16,796,888	1,012	1,013	31,795,987	28,428,363	1.46	1.71	1.45	1.69	-	-
31,787,219	18,463,046	1,021	1,011	46,834,937	32,354,413	1.50	1.77	1.47	1.75	-	-
0	1,196,149	-	1,015	0	2,839,800	-	2.41	-	2.37	-	-
0	393,787	-	1,022	0	890,826	-	2.31	-	2.26	-	-
1,771,229	11,026,652	1,000	1,000	3,888,435	23,062,373	2.20	2.09	2.20	2.09	-	-
0	54,936	-	1,022	0	119,246	-	2.22	-	2.17	-	-
0	59,109	-	1,020	0	109,781	-	1.89	-	1.86	-	-
0	2,427,001	-	1,132	0	3,811,244	-	1.78	-	1.57	-	-
0	6,529,267	-	1,017	0	8,466,268	-	1.32	-	1.30	-	-
0	123,335	-	1,026	0	215,576	-	1.79	-	1.75	-	-
1,110,634	0	1,022	-	1,194,363	0	1.10	-	1.08	-	-	-
5,676,615	0	1,013	-	10,186,378	0	1.82	-	1.79	-	-	-
83,570,078	85,159,695	1,019	1,020	162,998,383	168,288,410	1.99	2.02	1.95	1.98	-	-
260,716,566	269,656,339	1,022	1,024	420,083,441	448,045,895	1.65	1.70	1.61	1.66	-	-
0	2,688,272	-	1,034	0	5,748,652	-	2.21	-	2.14	-	-
25,859,106	36,954,843	1,011	1,037	52,238,420	66,154,525	2.04	1.86	2.02	1.79	-	-
10,467,157	20,043,240	985	997	24,908,397	34,408,203	2.34	1.71	2.38	1.72	-	-
0	59,056	-	1,022	0	132,965	-	2.30	-	2.25	-	-
36,683,091	37,242,382	994	1,017	72,053,953	75,251,436	1.95	2.05	1.96	2.02	-	-
1,520,091	9,007,621	997	1,017	4,020,338	23,389,863	2.64	2.64	2.64	2.60	-	-
5,026,947	912,810	1,019	1,020	6,837,840	1,389,766	1.39	1.55	1.36	1.52	-	-
0	1,316,588	-	1,015	0	2,611,426	-	2.01	-	1.98	-	-
0	35,563,427	-	1,029	0	82,524,236	-	2.39	-	2.32	-	-
315,551,736	269,244,050	1,021	1,021	587,573,571	550,461,754	1.90	2.09	1.86	2.04	-	-
53,468	0	1,005	-	44,913	0	0.84	-	0.84	-	-	-
19,582,918	4,755,702	1,019	1,012	22,549,552	8,165,067	1.17	1.74	1.15	1.72	-	-
1,495,202	0	1,015	-	2,464,659	0	1.67	-	1.65	-	-	-
29,617,688	917,970	1,020	1,021	31,434,990	1,374,265	1.08	1.53	1.06	1.50	-	-
8,769,043	15,955,193	1,019	1,020	12,067,798	24,211,600	1.40	1.55	1.38	1.52	-	-
0	1,876,269	-	1,024	0	2,258,342	-	1.23	-	1.20	-	-
0	1,511,019	-	1,020	0	2,571,855	-	1.74	-	1.70	-	-
0	349,120	-	1,021	0	768,464	-	2.25	-	2.20	-	-
0	1,195,633	-	1,024	0	1,632,259	-	1.40	-	1.37	-	-
739,241	4,619,989	1,015	1,031	2,042,542	11,296,609	2.81	2.52	2.76	2.45	-	-
1,110,781	2,510,048	1,014	1,013	2,820,150	6,229,646	2.57	2.52	2.54	2.48	-	-
561,526	3,286,229	1,017	1,017	983,890	5,800,075	1.78	1.79	1.75	1.76	-	-
10,278,044	12,429,023	1,035	1,035	13,329,928	20,144,131	1.34	1.68	1.30	1.62	-	-
11,825,947	2,214,058	1,014	1,027	17,445,894	4,499,368	1.50	2.09	1.48	2.03	-	-
164,200	319,491	1,003	1,030	185,788	554,765	1.14	1.79	1.13	1.74	-	-
0	462,612	-	1,030	0	842,726	-	1.88	-	1.82	-	-
22,586,036	25,899,932	1,041	1,000	37,916,215	48,607,229	1.75	1.88	1.68	1.88	-	-
789,940	0	1,011	-	1,421,892	0	1.82	-	1.80	-	-	-
0	21,100	-	1,016	0	42,000	-	2.02	-	1.99	-	-
688,380	5,318,345	1,018	1,017	2,674,477	17,301,873	3.95	3.31	3.89	3.25	-	-
675,829	5,064,039	1,016	1,095	1,532,487	10,998,803	2.30	2.38	2.27	2.17	-	-
14,040,888	31,092,518	1,013	1,017	23,033,568	55,041,658	1.66	1.80	1.64	1.77	-	-
2,038,365	1,874,585	1,011	1,019	3,901,831	5,627,849	1.94	3.06	1.91	3.00	-	-
110,581	0	1,011	-	182,944	0	1.67	-	1.65	-	-	-
3,345,054	6,572,675	1,014	1,016	5,604,289	11,146,395	1.70	1.72	1.68	1.70	-	-
109,186	399,996	1,025	1,024	185,613	678,718	1.74	1.74	1.70	1.70	-	-
0	437,509	-	1,000	0	905,652	-	2.07	-	2.07	-	-
0	61,301	-	1,000	0	142,218	-	2.32	-	2.32	-	-
0	4,263,128	-	1,000	0	7,124,287	-	1.67	-	1.67	-	-
0	519,713	-	1,000	0	1,218,971	-	2.35	-	2.35	-	-
141,305	0	1,020	-	152,624	0	1.10	-	1.08	-	-	-
54,067	1,683,411	1,019	1,029	83,804	2,597,457	1.58	1.59	1.55	1.54	-	-
5,123,322	5,222,098	1,013	1,018	11,666,871	15,173,963	2.31	2.96	2.28	2.91	-	-
64,971	0	1,016	-	99,451	0	1.55	-	1.53	-	-	-
11,000,001	10,704,620	1,021	1,023	15,664,198	16,174,432	1.45	1.55	1.42	1.51	-	-
2,450,413	799,296	1,036	1,040	2,902,561	1,364,620	1.23	1.77	1.18	1.71	-	-
0	1,381,443	-	1,015	0	3,187,841	-	2.34	-	2.31	-	-
0	3,258,892	-	1,035	0	4,071,672	-	1.29	-	1.25	-	-
414,713	0	1,012	-	813,141	0	1.98	-	1.96	-	-	-
383,891	0	1,006	-	442,362	0	1.16	-	1.15	-	-	-

See footnotes at the end of table.

**Table FE6. U.S. Natural Gas Imports, 1992-1993 (Continued)**

Importing Companies	Docket Number	Point of Entry		Volume		Percent Change
		City	State	(thousand cubic feet)		
				1992	1993	
Pipeline Imports from Canada						
	FE92-96-NG et al.	Waddington	NY	2,981,330	6,963,520	133.6
Saranac Power Partners L P	FE92-70-NG	Champlain	NY	0	15,566	-
Selkirk Cogen Partners L P	FE89-55-NG	Niagara Falls	NY	0	363,345	-
	FE92-115-NG et al.	Waddington	NY	1,425,320	6,794,546	376.7
Sierra Pacific Power Company	FE93-102-NG et al.	Sumas	WA	10,788,492	10,784,720	0.0
Southeastern Michigan Gas Co	FE88-52-NG et al.	Noyes	MN	5,866,471	5,164,411	-12.0
Southern California Edison Co.	FE92-131-NG et al.	Eastport	ID	0	11,984,740	-
Southwest Gas Corp	FE91-40-NG	Sumas	WA	0	208,427	-
Spot Market Corp	FE91-07-NG et al.	Eastport	ID	340,567	0	-
St Lawrence Gas Co Inc	ERA80-11-NG et al.	Massena	NY	7,987,140	5,448,251	-31.8
Sumas Cogeneration Company L P	FE90-92-NG	Sumas	WA	0	5,599,922	-
Suncor Inc	FE93-140-NG	Eastport	ID	0	2,387,244	-
	FE93-140-NG et al.	Port Of Morgan	MT	20,185,600	25,163,339	24.7
Sunrise Energy Company	FE88-44-NG et al.	Eastport	ID	0	445,399	-
Tarpon Gas Marketing Ltd	FE91-101-NG et al.	Noyes	MN	379,868	0	-
	FE91-101-NG	Waddington	NY	0	87,140	-
Tenaska Marketing Ventures	FE91-77-NG	Port Of Morgan	MT	459	0	-
Tennessee Gas P L Co	FE9184NG et al.	Niagara Falls	NY	13,415,850	13,217,171	-1.5
	FE9389NG et al.	Noyes	MN	26,932,277	21,341,738	-20.8
Tengasco Corp	FE91-78-NG et al.	Niagara Falls	NY	4,388,832	1,605,070	-63.4
	FE91-78-NG	Noyes	MN	139,103	0	-
Texas Eastern Trans Corp	FE89-26-NG et al.	Niagara Falls	NY	3,799,654	100,296	-97.4
	ERA87-37-NG et al.	Noyes	MN	10,209,542	499,900	-95.1
Texas-Ohio Gas Inc	FE92-46-NG et al.	Eastport	ID	1,917,067	1,124,076	-41.4
Texpar Energy Inc	FE92-152-NG	Eastport	ID	0	43,789	-
	FE92-152-NG et al.	Noyes	MN	1,363,359	56,030	-95.9
TM Star Fuel Company	FE93-15-NG	Sumas	WA	0	542,911	-
Transco Energy Marketing Co	FE93-46-NG et al.	Niagara Falls	NY	50,446,344	34,191,496	-32.2
	FE93-46-NG	St Clair	MI	0	383,834	-
	FE93-46-NG	Waddington	NY	0	915,358	-
Tristar Gas Marketing Company	FE92-116-NG	Eastport	ID	0	839,370	-
Unigas Energy Inc	FE92-151-NG et al.	Babb	MT	1,983,653	1,397,853	-29.5
	FE90-107-NG	Detroit	MI	2,224,872	0	-
	FE92-151-NG et al.	Massena	NY	53,272	337,160	532.9
	FE92-151-NG et al.	Noyes	MN	1,427,594	1,744,847	22.2
	FE92-151-NG et al.	Port Of Morgan	MT	1,778,097	4,613,426	159.5
	FE92-151-NG et al.	St Clair	MI	463,551	411,683	-11.2
	FE90-107-NG	Sumas	WA	2,271,852	0	-
Universal Resources Corp.	FE92-23-NG et al.	Sumas	WA	677,594	2,713,584	300.5
Vector Energy (USA) Inc	FE92-118-NG	Eastport	ID	0	1,036,934	-
	FE92-118-NG et al.	Niagara Falls	NY	11,375,817	6,540,894	-42.5
Vermont Gas Sys Inc	FE91-54-NG et al.	Highgate Springs	VT	7,595,338	7,327,105	-3.5
Victoria Gas Corp	FE93-22-NG et al.	Niagara Falls	NY	2,600,627	1,491,180	-42.7
	FE90-29-NG et al.	Waddington	NY	1,152,123	71,175	-93.8
Viking Gas Transmission Co	ERA86-06-NG	Niagara Falls	NY	1,980	0	-
	FE89-25-NG	Noyes	MN	14,228,908	0	-
Washington Energy Mktg Inc	ERA87-11-NG	Eastport	ID	0	3,606,229	-
	ERA87-11-NG	Sumas	WA	0	1,392,468	-
Washington Natural Gas Co	FE92-18-NG	Eastport	ID	0	2,480,433	-
	FE93-122-NG et al.	Sumas	WA	12,285,171	24,053,732	95.8
Washington Wtr Pwr Co The	FE93-57-NG et al.	Eastport	ID	0	2,797,279	-
Wes Cana Energy Mktg (US) Inc	ERA86-34-NG et al.	Babb	MT	832,382	0	-
	FE92-110-NG	Detroit	MI	0	227,037	-
	FE92-110-NG et al.	Niagara Falls	NY	30,634,731	23,033,565	-24.8
	FE92-1101-NG et al.	Port Of Morgan	MT	1,487,678	10,555,832	609.6
	FE92-110-NG	St Clair	MI	0	122,420	-
	FE92-110-NG et al.	Waddington	NY	1,946,242	28,981	-98.5
Westar Marketing Company	FE91-48-NG et al.	Sumas	WA	3,557,488	0	-
Westcoast Gas Services Inc	FE92-25-NG	Massena	NY	0	69,746	-
	FE92-25-NG	Noyes	MN	0	7,746	-
	FE92-25-NG	Port Of Morgan	MT	0	1,101,241	-
Western Gas Marketing Inc	FE90-55-NG	Babb	MT	1,522,630	0	-
	FE91-121-NG et al.	Detroit	MI	1,345,338	12,610	-99.1
	FE91-121-NG et al.	Eastport	ID	196,404	3,031,058	1,443.3

See footnotes at the end of table.

**Table FE6. U.S. Natural Gas Imports, 1992-1993 (Continued)**

Heating Content (million Btu)		Average Btu/ Cubic Foot		Revenue (dollars)		Average Price				Volume (barrels)	
1992	1993	1992	1993	1992	1993	(dollars/thousand cubic feet)		(dollars/million Btu)		1992	1993
						1992	1993	1992	1993		
3,035,108	7,047,002	1,018	1,012	6,779,838	14,603,020	2.27	2.10	2.23	2.07	-	-
0	15,804	-	1,015	0	107,342	-	6.90	-	6.79	-	-
0	369,576	-	1,017	0	936,476	-	2.58	-	2.53	-	-
1,420,922	6,914,022	997	1,018	3,790,363	16,873,386	2.66	2.48	2.67	2.44	-	-
10,907,163	10,903,348	1,011	1,011	15,956,443	17,628,173	1.48	1.63	1.46	1.62	-	-
5,839,147	5,152,397	995	998	11,567,657	12,692,437	1.97	2.46	1.98	2.46	-	-
0	12,344,282	-	1,030	0	19,639,535	-	1.64	-	1.59	-	-
0	209,469	-	1,005	0	364,291	-	1.75	-	1.74	-	-
345,677	0	1,015	-	352,112	0	1.03	-	1.02	-	-	-
7,946,264	5,438,088	995	998	22,916,762	13,507,080	2.87	2.48	2.88	2.48	-	-
0	5,805,248	-	1,037	0	10,280,463	-	1.84	-	1.77	-	-
0	2,462,920	-	1,032	0	4,044,065	-	1.69	-	1.64	-	-
20,145,229	24,456,544	998	972	25,698,906	38,790,355	1.27	1.54	1.28	1.59	-	-
0	458,766	-	1,030	0	856,837	-	1.92	-	1.87	-	-
379,800	0	1,000	-	472,628	0	1.24	-	1.24	-	-	-
0	88,500	-	1,016	0	202,665	-	2.33	-	2.29	-	-
468	0	1,020	-	1,771	0	3.86	-	3.78	-	-	-
13,354,523	13,312,855	995	1,007	85,936,933	62,873,174	6.41	4.76	6.44	4.72	-	-
27,265,666	21,611,424	1,012	1,013	33,424,980	40,873,009	1.24	1.92	1.23	1.89	-	-
4,434,252	1,591,388	1,010	991	7,822,202	3,573,274	1.78	2.23	1.76	2.25	-	-
134,741	0	969	-	146,023	0	1.05	-	1.08	-	-	-
3,758,946	102,202	989	1,019	14,036,463	704,862	3.69	7.03	3.73	6.90	-	-
10,188,294	506,899	998	1,014	27,871,709	1,609,465	2.73	3.22	2.74	3.18	-	-
1,965,249	1,142,063	1,025	1,016	3,089,533	2,015,746	1.61	1.79	1.57	1.77	-	-
0	43,706	-	998	0	75,152	-	1.72	-	1.72	-	-
1,376,157	56,371	1,009	1,006	2,118,879	124,643	1.55	2.22	1.54	2.21	-	-
0	564,062	-	1,039	0	1,032,233	-	1.90	-	1.83	-	-
40,951,219	34,766,442	812	1,017	93,819,480	91,119,681	1.86	2.66	2.29	2.62	-	-
0	390,341	-	1,017	0	971,842	-	2.53	-	2.49	-	-
0	929,532	-	1,015	0	2,220,346	-	2.43	-	2.39	-	-
0	854,336	-	1,018	0	1,366,648	-	1.63	-	1.60	-	-
1,983,653	1,397,853	1,000	1,000	1,995,251	1,440,389	1.01	1.03	1.01	1.03	-	-
2,224,872	0	1,000	-	3,582,693	0	1.61	-	1.61	-	-	-
53,272	337,160	1,000	1,000	91,217	571,704	1.71	1.70	1.71	1.70	-	-
1,427,594	1,744,847	1,000	1,000	2,120,069	3,252,874	1.49	1.86	1.49	1.86	-	-
1,778,097	4,613,426	1,000	1,000	2,492,697	6,965,392	1.40	1.51	1.40	1.51	-	-
463,551	411,683	1,000	1,000	1,240,676	948,099	2.68	2.30	2.68	2.30	-	-
2,271,852	0	1,000	-	2,609,987	0	1.15	-	1.15	-	-	-
701,097	2,821,696	1,035	1,040	1,172,508	4,729,723	1.73	1.74	1.67	1.68	-	-
0	1,036,934	-	1,000	0	1,692,291	-	1.63	-	1.63	-	-
11,527,807	6,540,894	1,013	1,000	28,127,545	15,073,410	2.47	2.30	2.44	2.30	-	-
7,555,833	7,309,251	995	998	22,228,185	21,656,099	2.93	2.96	2.94	2.96	-	-
2,641,187	1,515,810	1,016	1,017	4,480,651	2,617,724	1.72	1.76	1.70	1.73	-	-
1,160,301	72,314	1,007	1,016	1,977,994	117,063	1.72	1.64	1.70	1.62	-	-
2,000	0	1,010	-	2,200	0	1.11	-	1.10	-	-	-
14,183,825	0	997	-	44,301,062	0	3.11	-	3.12	-	-	-
0	3,671,869	-	1,018	0	7,480,173	-	2.07	-	2.04	-	-
0	1,392,468	-	1,000	0	2,158,738	-	1.55	-	1.55	-	-
0	2,571,657	-	1,037	0	6,526,984	-	2.63	-	2.54	-	-
12,688,778	24,972,316	1,033	1,038	24,666,731	47,744,372	2.01	1.98	1.94	1.91	-	-
0	2,817,150	-	1,007	0	5,820,267	-	2.08	-	2.07	-	-
864,322	0	1,038	-	678,313	0	0.81	-	0.78	-	-	-
0	230,897	-	1,017	0	556,462	-	2.45	-	2.41	-	-
31,177,005	23,359,013	1,018	1,014	58,422,880	47,242,476	1.91	2.05	1.87	2.02	-	-
1,513,654	10,792,549	1,017	1,022	2,746,549	15,254,369	1.85	1.45	1.81	1.41	-	-
0	122,633	-	1,002	0	302,377	-	2.47	-	2.47	-	-
1,964,482	29,532	1,009	1,019	2,898,261	75,307	1.49	2.60	1.48	2.55	-	-
3,688,539	0	1,037	-	4,761,687	0	1.34	-	1.29	-	-	-
0	70,764	-	1,015	0	181,863	-	2.61	-	2.57	-	-
0	7,916	-	1,022	0	14,882	-	1.92	-	1.88	-	-
0	1,125,471	-	1,022	0	2,084,660	-	1.89	-	1.85	-	-
1,549,920	0	1,018	-	1,890,158	0	1.24	-	1.22	-	-	-
1,345,742	12,900	1,000	1,023	1,805,196	32,250	1.34	2.56	1.34	2.50	-	-
199,469	3,115,011	1,016	1,028	247,513	5,526,342	1.26	1.82	1.24	1.77	-	-

See footnotes at the end of table.

**Table FE6. U.S. Natural Gas Imports, 1992-1993 (Continued)**

Importing Companies	Docket Number	Point of Entry		Volume		
		City	State	(thousand cubic feet)		Percent Change
				1992	1993	
Pipeline Imports from Canada						
	FE91-121-NG et al.	Niagara Falls	NY	6,980,217	1,920,464	-72.5
	FE91-45-NG et al.	Noyes	MN	34,437,212	21,878,774	-36.5
	FE91-45-NG et al.	Port Of Morgan	MT	42,761,176	46,348,714	8.4
	FE91-45-NG et al.	St Clair	MI	32,911,462	19,785,162	-39.9
	FE91-121-NG et al.	Waddington	NY	13,220,803	4,365,597	-67.0
	FE91-121-NG	Whitlash	MT	0	1,735,691	-
Western Gas Resources Inc	FE89-61-NG et al.	Babb	MT	1,158,338	1,282,000	10.7
	FE89-61-NG	Sumas	WA	0	122,710	-
Williams Gas Marketing Co	FE92-29-NG	Babb	MT	74,277	0	-
	FE92-29-NG et al.	Eastport	ID	1,675,176	0	-
	FE92-29-NG et al.	Sumas	WA	3,206,365	264,200	-91.8
Windward Energy & Mktg Co	ERA87-52-NG et al.	Eastport	ID	961,991	432,380	-55.1
Wisconsin Fuel & Light Co	FE93-94-NG et al.	Noyes	MN	0	610,469	-
Wisconsin Gas Co	FE93-91-NG et al.	Noyes	MN	0	7,683,433	-
Wisconsin Natural Gas Co	FE93-92-NG et al.	Noyes	MN	0	1,660,349	-
Wisconsin Power And Light Co	FE93-101-NG et al.	Noyes	MN	2,949,729	2,910,021	-1.4
Wisconsin Public Service Corp	FE89-13-NG et al.	Noyes	MN	2,908,374	5,228,410	79.8
Total Canada (excluding exchange)				2,093,879,642	2,266,022,262	8.2
Michigan Consol Gas Co (exchange) <sup>b</sup>	FE91-88-NG et al.	Noyes	MN	507,644	728,697	43.5
Total Canada (including exchange)				2,094,387,286	2,266,750,959	8.2
Pipeline Imports from Mexico						
CMEX Energy Inc	FE89-34-NG	Hidalgo	TX	0	725,000	-
CNG Producing Company	FE92-38-NG	Hidalgo	TX	0	222,261	-
Conoco Inc	FE93-63-NG	Hidalgo	TX	0	388,595	-
Oryx Gas Marketing L P	FE91-73-NG	Hidalgo	TX	0	86,371	-
Panhandle Trading Co	FE91-63-NG	Hidalgo	TX	0	123,503	-
Valero Industrial Gas L P	FE91-53-NG	Hidalgo	TX	0	132,609	-
Total Mexico				0	1,678,339	-
Total Pipeline Imports				2,094,387,286	2,268,429,298	8.3
Liquefied Natural Gas (LNG) Imports from Algeria						
Distrigas Corp	ERA88-37-LNG et al.	Everett	MA	30,479,229	50,895,424	67.0
Pan Natl Gas Sales Inc	FE89-77-LNG et al.	Lake Charles	LA	12,637,191	30,789,801	143.6
Total LNG Imports				43,116,420	81,685,225	89.5
Grand Total Imports				2,137,503,706	2,350,114,523	9.9

See footnotes at the end of table.

**Table FE6. U.S. Natural Gas Imports, 1992-1993 (Continued)**

Heating Content (million Btu)		Average Btu/ Cubic Foot		Revenue (dollars)		Average Price				Volume (barrels)	
1992	1993	1992	1993	1992	1993	(dollars/thousand cubic feet)		(dollars/million Btu)		1992	1993
						1992	1993	1992	1993		
7,064,826	1,952,760	1,012	1,017	13,363,276	4,427,310	1.91	2.31	1.89	2.27	-	-
34,878,683	22,161,771	1,013	1,013	48,892,152	37,203,738	1.42	1.70	1.40	1.68	-	-
43,773,744	47,484,754	1,024	1,025	57,584,226	76,317,517	1.35	1.65	1.32	1.61	-	-
33,231,170	20,101,671	1,010	1,016	51,448,682	40,063,364	1.56	2.02	1.55	1.99	-	-
13,334,203	4,440,323	1,009	1,017	22,567,397	10,069,759	1.71	2.31	1.69	2.27	-	-
0	1,794,129	-	1,034	0	2,906,554	-	1.67	-	1.62	-	-
1,183,060	1,363,695	1,021	1,064	1,116,633	2,042,793	0.96	1.59	0.94	1.50	-	-
0	136,208	-	1,110	0	265,606	-	2.16	-	1.95	-	-
74,277	0	1,000	-	64,235	0	0.86	-	0.86	-	-	-
1,675,176	0	1,000	-	2,131,566	0	1.27	-	1.27	-	-	-
3,206,365	264,200	1,000	1,000	3,322,772	513,857	1.04	1.94	1.04	1.94	-	-
982,130	439,313	1,021	1,016	1,501,445	822,570	1.56	1.90	1.53	1.87	-	-
0	619,346	-	1,015	0	1,490,663	-	2.44	-	2.41	-	-
0	7,794,894	-	1,015	0	18,325,946	-	2.39	-	2.35	-	-
0	1,684,414	-	1,014	0	4,267,845	-	2.57	-	2.53	-	-
2,985,816	2,957,597	1,012	1,016	4,866,902	6,572,906	1.65	2.26	1.63	2.22	-	-
2,945,165	5,306,384	1,013	1,015	6,078,194	11,983,364	2.09	2.29	2.06	2.26	-	-
2,113,532,944	2,306,553,928	1,009	1,018	3,849,812,462	4,587,569,654	1.84	2.02	1.82	1.99	-	-
514,392	740,313	1,013	1,016	0	0	-	-	-	-	-	-
2,114,047,336	2,307,294,241	1,009	1,018	3,849,812,462	4,587,569,654	1.84	2.02	1.82	1.99	-	-
0	725,000	-	1,000	0	1,363,000	-	1.88	-	1.88	-	-
0	235,152	-	1,058	0	482,062	-	2.17	-	2.05	-	-
0	388,595	-	1,000	0	742,216	-	1.91	-	1.91	-	-
0	86,371	-	1,000	0	177,061	-	2.05	-	2.05	-	-
0	130,601	-	1,057	0	235,082	-	1.90	-	1.80	-	-
0	140,250	-	1,058	0	263,670	-	1.99	-	1.88	-	-
0	1,705,969	-	1,016	0	3,263,091	-	1.94	-	1.91	-	-
2,114,047,336	2,309,000,210	1,009	1,018	3,849,812,462	4,590,832,745	1.84	2.02	1.82	1.99	-	-
33,380,163	55,250,212	1,095	1,086	87,781,910	127,151,015	2.88	2.50	2.63	2.30	8,988,416	14,985,349
14,020,727	33,908,953	1,109	1,101	21,813,977	52,223,285	1.73	1.70	1.56	1.54	3,630,286	8,844,986
47,400,890	89,159,165	1,099	1,091	109,595,887	179,374,300	2.54	2.20	2.31	2.01	12,618,702	23,830,335
2,161,448,226	2,398,159,375	1,011	1,020	3,959,408,349	4,770,207,045	1.85	2.03	1.83	1.99	-	-

<sup>a</sup> Includes "take-or-pay" deficiency payments and adjustments for prior overpayments.

<sup>b</sup> During 1993, Michigan Consolidated Gas Co. imported, on an equivalent Btu basis, 728,697 thousand cubic feet of natural gas from Canada as part of an energy exchange for ethane exported to Canada. There was no cost reported. This exchange volume is excluded in calculating the average prices, but included in the total volume imported.

- = Not applicable.

Notes: Geographic coverage is the continental United States including Alaska. In addition, 324,092,528 thousand cubic feet were received by Great Lakes Gas Co. into Noyes, MN, from TransCanada Pipelines Ltd for transportation, all of which was delivered to TransCanada at St. Claire Sault Ste. Marie, Michigan.

Source: Energy Information Administration, Form FPC-14, "Annual Report for Importers and Exporters of Natural Gas."

**Table FE7. Summary of U.S. Natural Gas Imports, 1977-1993**  
(Volume in Million Cubic Feet; Average Price in Dollars per Thousand Cubic Feet)

Year and Month	Pipeline				Total Pipeline	
	Canada		Mexico		Volume	Average Price
	Volume	Average Price	Volume	Average Price		
<b>1977 Total</b> .....	996,722	1.99	2,384	2.25	999,106	1.99
<b>1978 Total</b> .....	881,123	2.19	0	-	881,123	2.19
<b>1979 Total</b> .....	1,000,775	2.61	0	-	1,000,775	2.61
<b>1980 Total</b> .....	796,507	4.32	102,410	4.41	898,917	4.33
<b>1981 Total</b> .....	762,107	4.83	105,013	5.01	867,120	4.85
<b>1982 Total</b> .....	783,407	4.97	94,794	5.02	878,200	4.98
<b>1983 Total</b> .....	711,923	4.49	75,361	4.70	787,284	4.51
<b>1984 Total</b> .....	755,368	4.01	51,502	4.49	806,870	4.04
<b>1985 Total</b> .....	926,056	3.17	0	-	926,056	3.17
<b>1986 Total</b> .....	748,780	2.42	0	-	748,780	2.42
<b>1987 Total</b> .....	992,532	1.95	0	-	992,532	1.95
<b>1988 Total</b> .....	1,276,322	1.83	0	-	1,276,322	1.83
<b>1989 Total</b> .....	1,339,357	1.81	0	-	1,339,357	1.81
<b>1990 Total</b> .....	1,448,065	1.91	0	-	1,448,065	1.91
<b>1991 Total</b> .....	1,709,716	1.81	0	-	1,709,716	1.81
<b>1992</b>						
January .....	157,026	1.95	0	-	157,026	1.95
February .....	170,167	1.64	0	-	170,167	1.64
March .....	177,978	1.63	0	-	177,978	1.63
April .....	173,615	1.62	0	-	173,615	1.62
May .....	174,312	1.66	0	-	174,312	1.66
June .....	159,743	1.77	0	-	159,743	1.77
July .....	167,216	1.70	0	-	167,216	1.70
August .....	172,240	1.81	0	-	172,240	1.81
September .....	163,584	1.96	0	-	163,584	1.96
October .....	173,904	2.21	0	-	173,904	2.21
November .....	202,846	1.94	0	-	202,846	1.94
December .....	201,756	2.13	0	-	201,756	2.13
<b>Total</b> .....	2,094,387	1.84	0	-	2,094,387	1.84
<b>1993</b>						
January .....	194,929	2.05	0	-	194,929	2.05
February .....	183,057	1.86	0	-	183,057	1.86
March .....	199,269	1.94	0	-	199,269	1.94
April .....	180,946	2.02	0	-	180,946	2.02
May .....	166,072	2.18	0	-	166,072	2.18
June .....	174,799	1.97	0	-	174,799	1.97
July .....	186,939	1.92	0	-	186,939	1.92
August .....	192,230	1.97	0	-	192,230	1.97
September .....	183,775	2.09	0	-	183,775	2.09
October .....	187,147	1.92	0	-	187,147	1.92
November .....	202,026	2.07	0	-	202,026	2.07
December .....	215,563	2.27	1,678	1.94	217,241	2.27
<b>Total</b> .....	<sup>a</sup> 2,266,751	2.02	1,678	1.94	<sup>a</sup> 2,268,429	2.02

See footnotes at the end of table.



**Table FE7. Summary of U.S. Natural Gas Imports, 1977-1993 (Continued)**  
 (Volume in Million Cubic Feet; Average Price in Dollars per Thousand Cubic Feet)

Year and Month	LNG						Grand Total	
	Algeria		Canada		Indonesia		Volume	Average Price
	Volume	Average Price	Volume	Average Price	Volume	Average Price		
<b>1977 Total</b> .....	11,324	0.92	572	3.96	0	-	1,011,002	1.98
<b>1978 Total</b> .....	84,422	1.53	0	-	0	-	965,545	2.13
<b>1979 Total</b> .....	252,608	2.03	0	-	0	-	1,253,383	2.49
<b>1980 Total</b> .....	85,850	3.77	0	-	0	-	984,767	4.28
<b>1981 Total</b> .....	36,824	5.54	6	6.63	0	-	903,949	4.88
<b>1982 Total</b> .....	55,136	5.82	0	-	0	-	933,336	5.03
<b>1983 Total</b> .....	131,124	6.41	0	-	0	-	918,407	4.78
<b>1984 Total</b> .....	36,191	4.90	0	-	0	-	843,060	4.08
<b>1985 Total</b> .....	23,659	4.60	0	-	0	-	949,715	3.21
<b>1986 Total</b> .....	0	-	0	-	1,669	4.62	750,449	2.43
<b>1987 Total</b> .....	0	-	0	-	0	-	992,532	1.95
<b>1988 Total</b> .....	17,490	2.71	0	-	0	-	1,293,812	1.84
<b>1989 Total</b> .....	42,163	2.22	0	-	0	-	1,381,520	1.82
<b>1990 Total</b> .....	84,193	2.47	0	-	0	-	1,532,259	1.94
<b>1991 Total</b> .....	63,596	2.36	0	-	0	-	1,773,313	1.83
<b>1992</b>								
January .....	7,610	2.49	0	-	0	-	164,636	1.98
February .....	5,076	2.91	0	-	0	-	175,243	1.68
March .....	2,503	3.32	0	-	0	-	180,482	1.65
April .....	2,531	2.12	0	-	0	-	176,146	1.63
May .....	0	-	0	-	0	-	174,312	1.66
June .....	2,505	2.09	0	-	0	-	162,249	1.77
July .....	0	-	0	-	0	-	167,216	1.70
August .....	2,492	3.15	0	-	0	-	174,733	1.83
September .....	2,533	1.83	0	-	0	-	166,117	1.96
October .....	2,563	3.19	0	-	0	-	176,466	2.22
November .....	7,633	2.57	0	-	0	-	210,479	1.96
December .....	7,670	2.17	0	-	0	-	209,426	2.13
<b>Total</b> .....	43,116	2.54	0	-	0	-	2,137,504	1.85
<b>1993</b>								
January .....	5,141	2.70	0	-	0	-	200,070	2.07
February .....	7,654	2.59	0	-	0	-	190,711	1.89
March .....	5,146	2.03	0	-	0	-	204,415	1.94
April .....	7,720	2.09	0	-	0	-	188,666	2.03
May .....	5,236	1.97	0	-	0	-	171,307	2.17
June .....	7,566	2.10	0	-	0	-	182,364	1.98
July .....	7,642	1.88	0	-	0	-	194,581	1.92
August .....	5,092	2.00	0	-	0	-	197,322	1.97
September .....	10,252	2.08	0	-	0	-	194,027	2.09
October .....	5,075	2.50	0	-	0	-	192,222	1.93
November .....	7,593	2.24	0	-	0	-	209,619	2.07
December .....	7,570	2.29	0	-	0	-	224,811	2.27
<b>Total</b> .....	81,685	2.20	0	-	0	- <sup>a</sup>	2,350,115	2.03

<sup>a</sup> During 1993, Michigan Consolidated Gas Co. imported, on an equivalent Btu basis, 728,697 thousand cubic feet of natural gas from Canada as part of an energy exchange for ethane exported to Canada. There was no cost reported. This exchange volume is excluded in calculating the average prices, but included in the total volume reported.

- = Not applicable.

Notes: Totals may not equal sum of components due to independent rounding. Geographic coverage is the continental United States including Alaska.

Source: Energy Information Administration, Form FPC-14, "Annual Report for Importers and Exporters of Natural Gas."

**Table FE8. U.S. Natural Gas Exports, 1992-1993**

Exporting Companies	Docket Number	Point of Exit		Volume		Percent Change
		City	State	(thousand cubic feet)		
				1992	1993	
Pipeline Exports to Canada						
AIG Trading Corp	FE93-49-NG	St Clair	MI	0	337,041	-
American Hunter Exploration Lt	FE93-13-NG	Detroit	MI	0	362,870	-
Brymore Energy Inc	FE93-61-NG et al.	Detroit	MI	388,883	53,262	-86.3
	FE89-20-NG et al.	St Clair	MI	246,468	0	-
Centra Gas Ontario Inc	FE93-27-NG	Detroit	MI	0	1,269,105	-
CoEnergy Trading Inc	FE93-28-NG et al.	Detroit	MI	0	1,379,662	-
	FE93-28-NG et al.	St Clair	MI	4,088,485	5,725,236	40.0
Consumers Gas Co Ltd The	FE90-111-NG et al.	St Clair	MI	609,983	1,015,251	66.4
Mobil Natural Gas Inc	FE93-67-NG	Harve	MT	0	45,105	-
Montana Power Co	CP-66-102	Sweetgrass	MT	14,278	0	-
North Canadian Marketing Corp	FE90-37-NG	Detroit	MI	83,222	0	-
Panhandle Trading Co	FE91-63-NG	Detroit	MI	0	209,690	-
St Clair Pipelines Ltd	FE93-141-NG	St Clair	MI	0	44,489	-
Tarpon Gas Marketing Ltd	FE91-62-NG	Detroit	MI	1,077,562	0	-
Tennessee Gas P L Co	FE9379NG et al.	St Clair	MI	24,422,201	17,161,068	-29.7
Tenggasco Corp	FE93-17-NG	Detroit	MI	0	149,814	-
UMC Petroleum Corp	FE93-124-NG	Harve	MT	0	60,556	-
Unigas Energy Inc	FE92-03-NG et al.	Detroit	MI	1,181,339	517,754	-56.2
Union Gas Ltd	FE92-12G-NG et al.	Detroit	MI	7,156,014	5,653,382	-21.0
	FE92-12G-NG et al.	St Clair	MI	5,163,328	6,213,331	20.3
Wes Cana Energy Mktg (US) Inc	FE92-110-NG	Detroit	MI	0	1,517,523	-
Western Gas Marketing Inc	FE91-121-NG et al.	Detroit	MI	11,125,103	2,057,594	-81.5
	FE91-121-NG et al.	St Clair	MI	12,220,582	745,463	-93.9
Total Canada				67,777,448	44,518,196	-34.3
Pipeline Exports to Mexico						
Access Energy Corp	FE90-75-NG	Hidalgo	TX	384,167	0	-
Amoco Energy Trading Co	FE93-58-NG et al.	Douglas	AZ	242,922	41,918	-82.7
	FE93-58-NG et al.	El Paso	TX	1,145,458	2,661,600	132.4
	FE93-58-NG et al.	Hidalgo	TX	10,042,752	5,685,394	-43.4
	FE93-58-NG	Penitas	TX	0	4,681,929	-
Anadarko Trading Company	FE92-32-NG et al.	Hidalgo	TX	1,411,129	135,000	-90.4
Aquila Southwest Marketing Co.	FE90-94-NG et al.	Hidalgo	TX	8,607,609	0	-
	FE90-94-NG	Penitas	TX	0	1,949,700	-
Catex Energy Inc	FE90-109-NG	Hidalgo	TX	0	97,087	-
Chevron Nat Gas Svc Inc	FE89-07-NG	Hidalgo	TX	1,463,717	0	-
	FE92-160-NG et al.	Penitas	TX	0	1,592,017	-
CMEX Energy Inc	FE89-34-NG	El Paso	TX	2,644,016	0	-
	FE89-34-NG	Hidalgo	TX	12,508,641	0	-
Conoco Inc	FE91-32-NG	Hidalgo	TX	7,430,834	0	-
	FE91-32-NG et al.	Penitas	TX	0	3,853,076	-
El Paso Nat Gas Co	ERA78-15-NG et al.	Douglas	AZ	1,756,915	1,826,503	4.0
Enron Gas Marketing Inc	FE91-74-NG	Douglas	AZ	0	587,031	-
	FE91-74-NG et al.	El Paso	TX	297,018	300,296	1.1
	FE89-57-NG	Hidalgo	TX	527,309	0	-
Marathon Oil Co	FE91-90-NG	Hidalgo	TX	111,904	0	-
Markwest Hydrocarbon Partners	FE92-01-NG	Hidalgo	TX	134,276	0	-
Meridian Oil Transportation	FE91-109-NG et al.	El Paso	TX	2,323,868	2,886,540	24.2
Mobil Natural Gas Inc	FE91-12-NG	Douglas	AZ	0	131,000	-
	FE91-12-NG et al.	El Paso	TX	4,726,000	440,000	-90.7
	FE91-12-NG	Hidalgo	TX	1,743,000	0	-
	FE91-12-NG et al.	Penitas	TX	3,159,000	1,950,000	-38.3
Nat Gas Clearinghouse	FE91-50-NG et al.	Douglas	AZ	161,684	335,314	107.4
	FE91-50-NG et al.	El Paso	TX	189,731	0	-
	FE91-50-NG	Hidalgo	TX	1,032,809	0	-
Oryx Gas Marketing L P	FE91-73-NG et al.	Hidalgo	TX	260,000	490,763	88.8
	FE91-73-NG	Penitas	TX	0	227,764	-
Oxy USA Inc	FE92-73-NG	Douglas	AZ	0	119,098	-
P.M.I. Commercio International	FE92-61-NG et al.	Douglas	AZ	403,559	212,595	-47.3
	FE92-61-NG et al.	Eagle Pass	TX	135,350	82,258	-39.2
	FE92-61-NG et al.	El Paso	TX	2,896,244	1,142,942	-60.5
	FE92-61-NG et al.	Hidalgo	TX	1,277,462	4,382,017	243.0

See footnotes at the end of table.

**Table FE8. U.S. Natural Gas Exports, 1992-1993 (Continued)**

Heating Content (million Btu)		Average Btu/ Cubic Foot		Cost (dollars)		Average Price				Volume (barrels)	
1992	1993	1992	1993	1992	1993	(dollars/thousand cubic feet)		(dollars/million Btu)		1992	1993
						1992	1993	1992	1993		
0	340,119	-	1,009	0	752,158	-	2.23	-	2.21	-	-
0	363,967	-	1,003	0	979,394	-	2.70	-	2.69	-	-
415,435	54,860	1,068	1,030	628,758	117,176	1.62	2.20	1.51	2.14	-	-
248,981	0	1,010	-	436,216	0	1.77	-	1.75	-	-	-
0	1,262,659	-	995	0	4,556,562	-	3.59	-	3.61	-	-
0	1,379,662	-	1,000	0	3,209,235	-	2.33	-	2.33	-	-
4,088,485	5,725,236	1,000	1,000	8,127,466	13,013,240	1.99	2.27	1.99	2.27	-	-
631,014	1,171,360	1,034	1,154	1,488,735	2,946,297	2.44	2.90	2.36	2.52	-	-
0	44,880	-	995	0	103,673	-	2.30	-	2.31	-	-
14,213	0	995	-	23,806	0	1.67	-	1.67	-	-	-
83,783	0	1,007	-	105,535	0	1.27	-	1.26	-	-	-
0	211,850	-	1,010	0	432,174	-	2.06	-	2.04	-	-
0	45,470	-	1,022	0	109,129	-	2.45	-	2.40	-	-
1,077,562	0	1,000	-	2,510,719	0	2.33	-	2.33	-	-	-
24,738,415	17,415,317	1,013	1,015	33,881,089	31,154,384	1.39	1.82	1.37	1.79	-	-
0	149,814	-	1,000	0	342,774	-	2.29	-	2.29	-	-
0	60,492	-	999	0	99,872	-	1.65	-	1.65	-	-
1,181,339	517,754	1,000	1,000	2,191,922	1,171,987	1.86	2.26	1.86	2.26	-	-
7,212,588	5,684,375	1,008	1,005	16,289,968	13,229,835	2.28	2.34	2.26	2.33	-	-
5,295,283	6,346,221	1,026	1,021	10,713,865	15,048,581	2.07	2.42	2.02	2.37	-	-
0	1,529,876	-	1,008	0	2,452,305	-	1.62	-	1.60	-	-
11,184,881	2,069,940	1,005	1,006	23,461,888	4,320,948	2.11	2.10	2.10	2.09	-	-
12,377,614	758,427	1,013	1,017	24,483,513	1,264,563	2.00	1.70	1.98	1.67	-	-
68,549,593	45,132,279	1,011	1,014	124,343,480	95,304,287	1.83	2.14	1.81	2.11	-	-
384,167	0	1,000	-	675,860	0	1.76	-	1.76	-	-	-
242,922	41,918	1,000	1,000	316,407	93,058	1.30	2.22	1.30	2.22	-	-
1,191,947	2,730,119	1,041	1,026	2,241,341	5,656,504	1.96	2.13	1.88	2.07	-	-
10,324,498	5,731,025	1,028	1,008	20,070,319	11,739,559	2.00	2.06	1.94	2.05	-	-
0	4,758,856	-	1,016	0	9,251,572	-	1.98	-	1.94	-	-
1,437,872	135,000	1,019	1,000	3,071,455	255,825	2.18	1.90	2.14	1.90	-	-
8,607,609	0	1,000	-	15,111,718	0	1.76	-	1.76	-	-	-
0	1,949,700	-	1,000	0	3,761,789	-	1.93	-	1.93	-	-
0	100,000	-	1,030	0	226,000	-	2.33	-	2.26	-	-
1,566,920	0	1,071	-	3,148,644	0	2.15	-	2.01	-	-	-
0	1,693,448	-	1,064	0	3,699,504	-	2.32	-	2.18	-	-
2,719,750	0	1,029	-	4,561,352	0	1.73	-	1.68	-	-	-
12,836,961	0	1,026	-	21,541,088	0	1.72	-	1.68	-	-	-
7,706,161	0	1,037	-	12,923,140	0	1.74	-	1.68	-	-	-
0	4,011,407	-	1,041	0	7,894,275	-	2.05	-	1.97	-	-
1,810,080	1,878,658	1,030	1,029	1,957,394	785,450	1.11	0.43	1.08	0.42	-	-
0	587,031	-	1,000	0	1,080,278	-	1.84	-	1.84	-	-
297,018	300,296	1,000	1,000	626,662	659,054	2.11	2.19	2.11	2.19	-	-
527,309	0	1,000	-	968,889	0	1.84	-	1.84	-	-	-
116,156	0	1,038	-	214,794	0	1.92	-	1.85	-	-	-
139,744	0	1,041	-	215,206	0	1.60	-	1.54	-	-	-
2,397,282	2,986,079	1,032	1,034	5,379,864	6,251,696	2.32	2.17	2.24	2.09	-	-
0	133,984	-	1,023	0	246,530	-	1.88	-	1.84	-	-
4,837,687	450,000	1,024	1,023	8,990,081	1,107,000	1.90	2.52	1.86	2.46	-	-
1,823,480	0	1,046	-	3,978,109	0	2.28	-	2.18	-	-	-
3,296,000	2,024,666	1,043	1,038	6,938,080	3,947,739	2.20	2.02	2.11	1.95	-	-
161,684	335,314	1,000	1,000	334,787	595,314	2.07	1.78	2.07	1.78	-	-
189,731	0	1,000	-	379,026	0	2.00	-	2.00	-	-	-
1,032,809	0	1,000	-	2,535,204	0	2.45	-	2.45	-	-	-
283,400	496,110	1,090	1,011	714,168	975,494	2.75	1.99	2.52	1.97	-	-
0	261,300	-	1,147	0	642,716	-	2.82	-	2.46	-	-
0	117,908	-	990	0	182,757	-	1.53	-	1.55	-	-
415,085	218,760	1,029	1,029	1,029,805	525,934	2.55	2.47	2.48	2.40	-	-
154,137	93,034	1,139	1,131	426,461	238,911	3.15	2.90	2.77	2.57	-	-
2,978,631	1,166,944	1,028	1,021	6,272,460	2,696,341	2.17	2.36	2.11	2.31	-	-
1,331,819	4,583,590	1,043	1,046	2,948,647	8,943,501	2.31	2.04	2.21	1.95	-	-

See footnotes at the end of table.

**Table FE8. U.S. Natural Gas Exports, 1992-1993 (Continued)**

Exporting Companies	Docket Number	Point of Exit		Volume		Percent Change
		City	State	(thousand cubic feet)		
				1992	1993	
Pipeline Exports to Mexico						
	FE92-61-NG	Penitas	TX	9,305,327	0	-
Phillips Gas Marketing Co	FE91-118-NG	Hidalgo	TX	250,000	0	-
Texaco Gas Marketing Inc	FE93-45-NG et al.	El Paso	TX	1,395,000	1,209,912	-13.3
	FE93-45-NG et al.	Hidalgo	TX	7,374,862	483,633	-93.4
Texas Intl Gas & Oil Co	FE89-19-NG	El Paso	TX	218,102	0	-
Transco Energy Marketing Co	FE90-27-NG	Hidalgo	TX	746,782	0	-
Union Pacific Fuels Inc	FE92-117-NG	Hidalgo	TX	0	100,000	-
Valero Industrial Gas L P	FE91-53-NG et al.	Eagle Pass	TX	547,191	580,555	6.1
	FE91-53-NG	El Paso	TX	686,750	0	-
	FE91-53-NG et al.	Hidalgo	TX	3,332,776	0	-
	FE91-53-NG	Penitas	TX	0	1,355,367	-
Victoria Gas Corp	FE90-29-NG et al.	Hidalgo	TX	5,098,718	0	-
Western Gas Marketing Inc	FE92-121-NG	El Paso	TX	0	135,135	-
Total Mexico				95,972,882	39,676,444	-58.7
Total Pipeline Exports				163,750,330	84,194,640	-48.6
Liquefied Natural Gas (LNG) Exports to Japan						
Marathon Oil Co	CI67-1226 et al.	Port Nikiski	AK	15,762,639	17,015,139	8.0
Phillips Alaska Nat.Gas Corp.	FE91-103-LNG et al.	Port Nikiski	AK	36,768,866	38,973,399	6.0
Total LNG Exports				52,531,505	55,988,538	6.6
Grand Total Exports				216,281,835	140,183,178	-35.2

See footnotes at the end of table.

**Table FE8. U.S. Natural Gas Exports, 1992-1993 (Continued)**

Heating Content (million Btu)		Average Btu/ Cubic Foot		Cost (dollars)		Average Price				Volume (barrels)	
1992	1993	1992	1993	1992	1993	(dollars/thousand cubic feet)		(dollars/million Btu)		1992	1993
						1992	1993	1992	1993		
9,775,404	0	1,051	-	20,862,908	0	2.24	-	2.13	-	-	-
256,445	0	1,026	-	418,005	0	1.67	-	1.63	-	-	-
1,395,000	1,209,912	1,000	1,000	2,626,010	2,785,024	1.88	2.30	1.88	2.30	-	-
7,374,862	483,633	1,000	1,000	12,415,681	913,661	1.68	1.89	1.68	1.89	-	-
225,377	0	1,033	-	405,679	0	1.86	-	1.80	-	-	-
772,919	0	1,035	-	1,422,171	0	1.90	-	1.84	-	-	-
0	100,000	-	1,000	0	226,000	-	2.26	-	2.26	-	-
618,773	661,764	1,131	1,140	1,356,986	1,645,803	2.48	2.83	2.19	2.49	-	-
705,980	0	1,028	-	983,218	0	1.43	-	1.39	-	-	-
3,415,956	0	1,025	-	6,554,371	0	1.97	-	1.92	-	-	-
0	1,371,853	-	1,012	0	2,728,652	-	2.01	-	1.99	-	-
5,278,875	0	1,035	-	8,144,270	0	1.60	-	1.54	-	-	-
0	140,000	-	1,036	0	246,400	-	1.82	-	1.76	-	-
98,630,450	40,752,309	1,028	1,027	182,760,260	80,002,341	1.90	2.02	1.85	1.96	-	-
167,180,043	85,884,588	1,021	1,020	307,103,740	175,306,628	1.88	2.08	1.84	2.04	-	-
15,912,386	17,176,782	1,010	1,009	54,104,410	56,879,927	3.43	3.34	3.40	3.31	4,550,628	4,890,365
37,118,171	39,343,646	1,010	1,009	126,227,584	130,281,972	3.43	3.34	3.40	3.31	10,573,140	11,202,082
53,030,557	56,520,428	1,010	1,009	180,331,994	187,161,899	3.43	3.34	3.40	3.31	15,123,768	16,092,447
220,210,600	142,405,016	1,018	1,016	487,435,734	362,468,527	2.25	2.59	2.21	2.55	-	-

- = Not applicable.

Notes: The base price of LNG to Japan is adjusted by a formula indexing the base price to the weighted average price of crude oils imported into Japan. Geographic coverage is the continental United States including Alaska.

Source: Energy Information Administration, Form FPC-14, "Annual Report for Importers and Exporters of Natural Gas."

**Table FE9. Summary of U.S. Natural Gas Exports, 1977-1993**  
(Volume in Million Cubic Feet; Average Price in Dollars per Thousand Cubic Feet)

Year and Month	Pipeline				Total Pipeline		LNG		Grand Total	
	Canada		Mexico		Volume	Average Price	Japan		Volume	Average Price
	Volume	Average Price	Volume	Average Price			Volume	Average Price		
<b>1977 Total</b> .....	31	1.54	3,940	1.41	3,971	1.41	51,655	1.96	55,626	1.92
<b>1978 Total</b> .....	66	1.79	4,003	1.65	4,098	1.66	48,434	2.17	52,532	2.13
<b>1979 Total</b> .....	76	2.04	4,308	1.97	4,384	1.97	51,289	2.32	55,673	2.29
<b>1980 Total</b> .....	113	3.31	3,886	2.47	3,999	2.50	44,732	4.90	48,731	4.70
<b>1981 Total</b> .....	106	4.79	3,337	3.37	3,443	3.41	55,929	6.05	59,372	5.90
<b>1982 Total</b> .....	162	4.95	1,705	5.17	1,867	5.15	49,861	5.83	51,728	5.81
<b>1983 Total</b> .....	136	4.60	1,646	4.79	1,782	4.78	52,857	5.11	54,639	5.10
<b>1984 Total</b> .....	127	4.19	1,786	4.48	1,913	4.46	52,840	4.93	54,753	4.83
<b>1985 Total</b> .....	178	3.06	2,207	3.99	2,385	3.92	52,883	4.81	55,268	4.77
<b>1986 Total</b> .....	9,203	2.12	1,896	3.49	11,099	2.35	50,172	2.91	61,271	2.81
<b>1987 Total</b> .....	3,297	1.81	2,125	3.18	5,421	2.35	48,599	3.15	54,020	3.07
<b>1988 Total</b> .....	19,738	2.02	2,327	3.21	22,065	2.14	51,573	2.99	73,638	2.74
<b>1989 Total</b> .....	38,443	2.00	17,004	2.14	55,447	2.05	51,424	3.01	106,871	2.51
<b>1990 Total</b> .....	17,359	2.70	15,659	1.88	33,018	2.31	52,546	3.59	85,565	3.10
<b>1991 Total</b> .....	14,791	1.91	60,448	1.76	75,239	1.79	54,005	3.71	129,244	2.59
<b>1992</b>										
January .....	2,377	1.87	9,687	1.83	12,064	1.84	4,368	3.58	16,432	2.30
February .....	3,654	1.43	5,963	1.24	9,617	1.31	4,369	3.44	13,986	1.98
March .....	11,437	1.95	6,707	1.37	18,144	1.74	4,367	3.27	22,511	2.03
April .....	5,980	1.35	7,371	1.52	13,351	1.44	4,403	3.21	17,754	1.88
May .....	5,919	1.56	7,285	1.69	13,204	1.63	5,827	3.23	19,030	2.12
June .....	6,172	1.81	7,262	1.78	13,435	1.80	4,378	3.31	17,812	2.17
July .....	5,230	1.67	6,258	1.68	11,489	1.68	4,379	3.44	15,868	2.16
August .....	5,074	1.84	8,778	1.97	13,852	1.92	4,377	3.56	18,229	2.31
September .....	5,547	1.91	8,181	2.00	13,728	1.96	4,408	3.61	18,136	2.36
October .....	6,290	2.19	10,063	2.66	16,353	2.48	2,920	3.59	19,272	2.65
November .....	3,487	2.04	10,674	2.26	14,161	2.20	4,366	3.56	18,527	2.52
December .....	6,611	2.18	7,743	2.18	14,354	2.18	4,370	3.52	18,724	2.49
<b>Total</b> .....	67,777	1.83	95,973	1.90	163,750	1.88	52,532	3.43	216,282	2.25
<b>1993</b>										
January .....	4,249	2.15	8,045	2.05	12,294	2.09	4,367	3.44	16,661	2.44
February .....	5,539	2.10	2,412	1.69	7,951	1.97	4,372	3.32	12,323	2.45
March .....	6,614	2.05	3,782	1.95	10,395	2.01	5,834	3.25	16,229	2.46
April .....	3,880	2.01	3,036	2.09	6,916	2.05	4,371	3.42	11,287	2.58
May .....	3,338	1.79	3,605	2.37	6,943	2.09	4,381	3.47	11,324	2.63
June .....	3,423	1.86	4,181	1.84	7,604	1.85	2,950	3.51	10,554	2.31
July .....	3,592	1.90	3,936	1.90	7,529	1.90	5,162	3.49	12,691	2.55
August .....	2,748	2.14	3,113	2.06	5,862	2.10	4,761	3.40	10,623	2.68
September .....	2,437	2.21	2,347	2.20	4,784	2.21	5,136	3.31	9,919	2.78
October .....	3,274	2.18	2,067	1.93	5,341	2.08	3,305	3.23	8,646	2.52
November .....	2,907	2.81	1,862	1.90	4,768	2.46	4,757	3.21	9,526	2.83
December .....	2,517	2.95	1,290	2.21	3,808	2.70	6,592	3.18	10,399	3.01
<b>Total</b> .....	44,518	2.14	39,676	2.02	84,195	2.08	55,989	3.34	140,183	2.59

Notes: Totals may not equal sum of components due to independent rounding. Geographic coverage is the continental United States including Alaska.

Source: Energy Information Administration, Form FPC-14, "Annual Report for Importers and Exporters of Natural Gas."

## Form FPC-14

### ***Survey Design and Data Collection Operations***

The data in this report are taken from Form FPC-14, "Annual Report for Importers and Exporters of Natural Gas." Prior to 1972, the Federal Power Commission (FPC) collected import and export natural gas data informally by letter. Since 1973, the data have been collected annually on Form FPC-14 on a mandatory basis.

The information in this report is required by the U.S. Department of Energy's Office of Fossil Energy and the Federal Energy Regulatory Commission in carrying out their regulatory responsibilities under the Natural Gas Act of 1938. Each person having authorization to import and export natural gas is required to file Form FPC-14 annually, regardless of whether that privilege has been exercised during the reporting year. Copies of Form FPC-14 are mailed to respondents in February, and the filing date is March 31 for reporting data for the preceding calendar year. A total of 405 companies had authorization to import or export natural gas in 1993. Import and export activity was reported by 195 respondents, 196 respondents reported no activity, and 14 were no longer in business at the end of the year.

Respondents are required to certify the accuracy of all data reported. The survey forms are checked for reasonableness and accuracy. If errors are found, the companies are required to file corrected data. The data are processed and published as reported.

Michigan Consolidated Gas Company imports natural gas from Canada as part of an energy exchange for ethane exported to Canada. In 1993 this exchange gas

totaled 728,697 thousand cubic feet, on an equivalent Btu basis.

This information appears in the appropriate table footnotes. Information about similar exchanges in previous years appears in feature articles for those years.

All natural gas volumes in this report are expressed at a pressure base of 14.73 pounds per square inch absolute and temperature of 60 degrees Fahrenheit, except as noted. All prices are in U.S. dollars. Import and export prices are those paid at the U.S. border, except exports of LNG which are the prices paid at the point of sale and delivery in Yokohama, Japan.

### ***Data Reporting Requirements***

The Form FPC-14 is a two-page form. The top of the form lists the name and address of the respondent and the reporting year. Schedule I, "Gaseous Phase Natural Gas," page 1, and Schedule II, "Liquefied Natural Gas," page 2, request the names of the foreign seller or buyer, transporter, U.S. entry or exit point, docket number, and whether gas was imported or exported. The main sections of Schedule I and Schedule II are for reporting, by month, the quantity imported or exported and the amount paid or received at the entry or exit point.

### ***Comparison with Other Data Sources***

Import and export data submitted on Form EIA-176, "Annual Report of Natural and Supplemental Gas Supply and Disposition," are compared with the data reported on the Form FPC-14. Any reporting discrepancies between the two surveys are resolved.