

# West Nile Virus Surveillance and Public Health Response

Florida 2001



# The Plan

---

- Building on existing system for arboviral control
-

# Florida Interagency Partnerships/Acknowledgements

- Department of Health
- Department of Agriculture and Consumer Services
- Florida Conservation and Wildlife Commission
- Department of Environmental Protection
- Florida Mosquito Control Association
- University of Florida Medical Entomology Laboratory
- Florida A&M Public Health Entomology Resource and Education Center
- Centers for Disease Control and Prevention

# Florida Ecology Supports Arbovirus



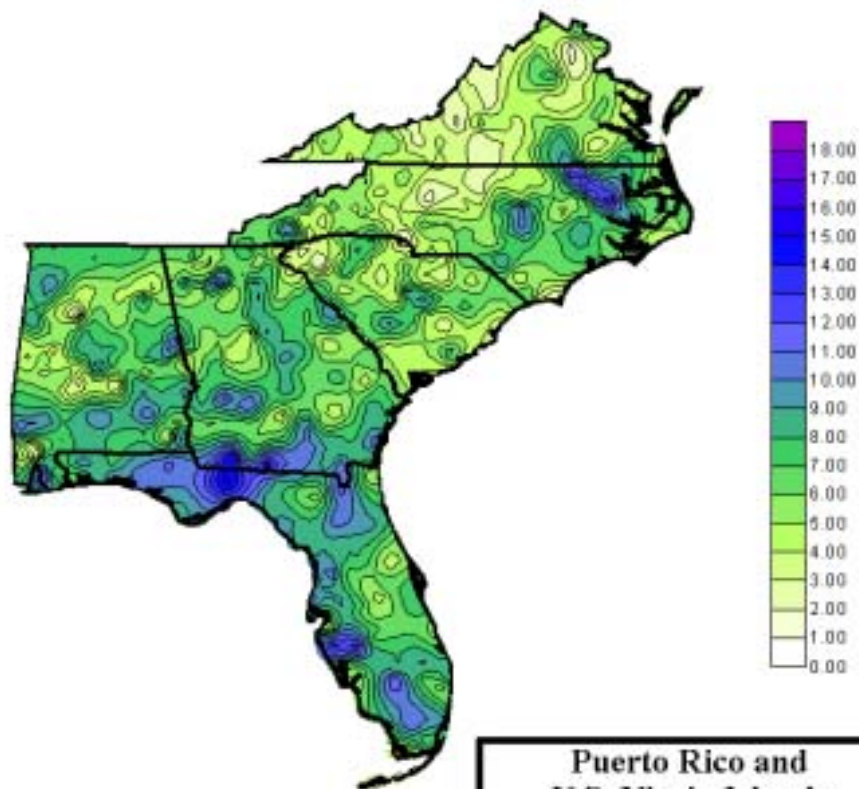
- Warm Climate
- Regular Rainfall
- Vectors Identified
- Suitable Hosts for Amplification
- Historical Data

# Surveillance for West Nile Virus

---

- Animal surveillance
    - Dead birds
    - Sentinel chickens
    - Horses
    - *Other vertebrates (minor)*
  - *Mosquito surveillance*
  - Human surveillance
-

**Southeast  
Precipitation  
June 2001**



\*Based on Final Data

Contour Interval - 1.00 Inches

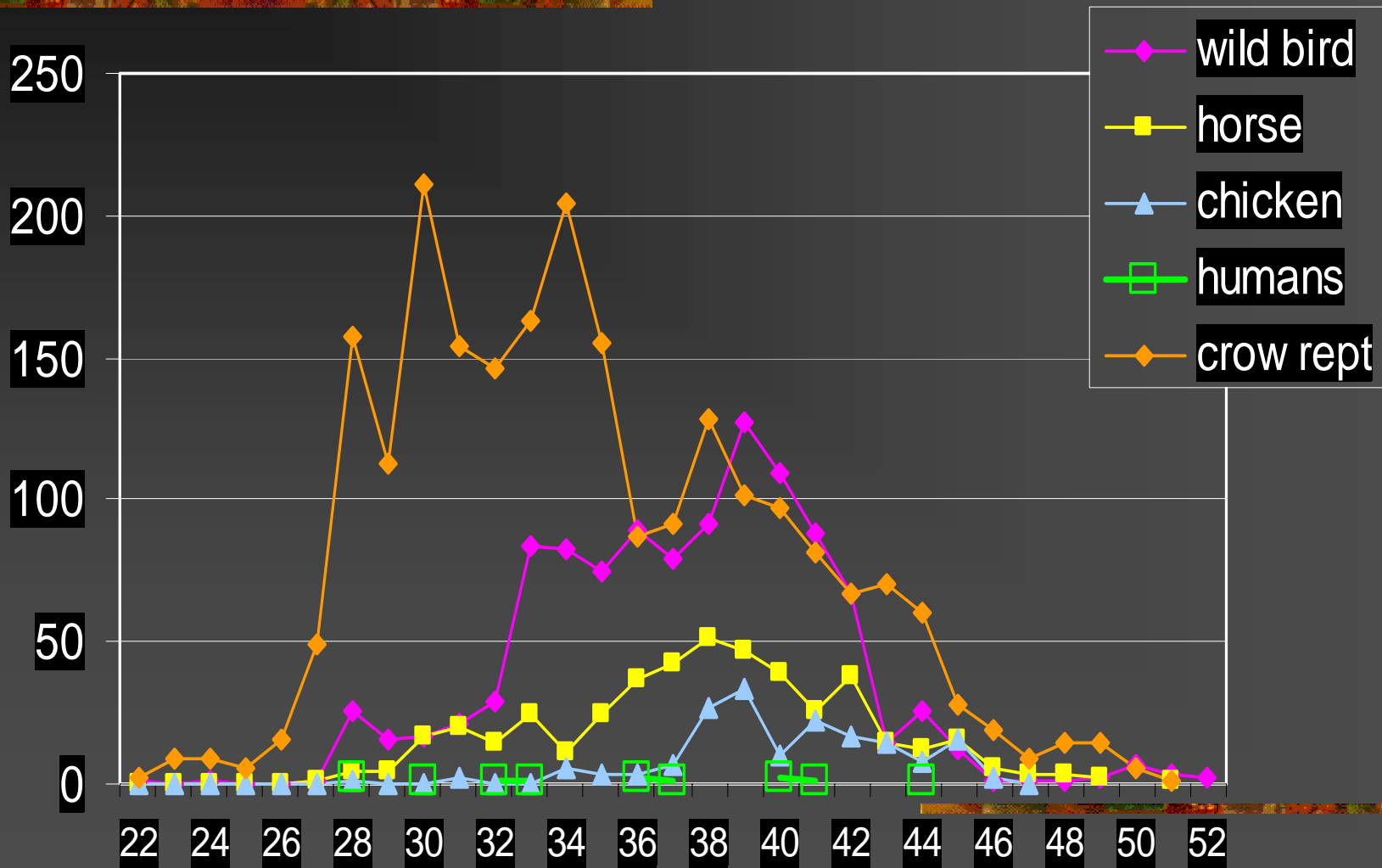
Data is from NWS First Order and Cooperative Stations.

Map produced by the Southeast Regional Climate Center, January 10, 2002.



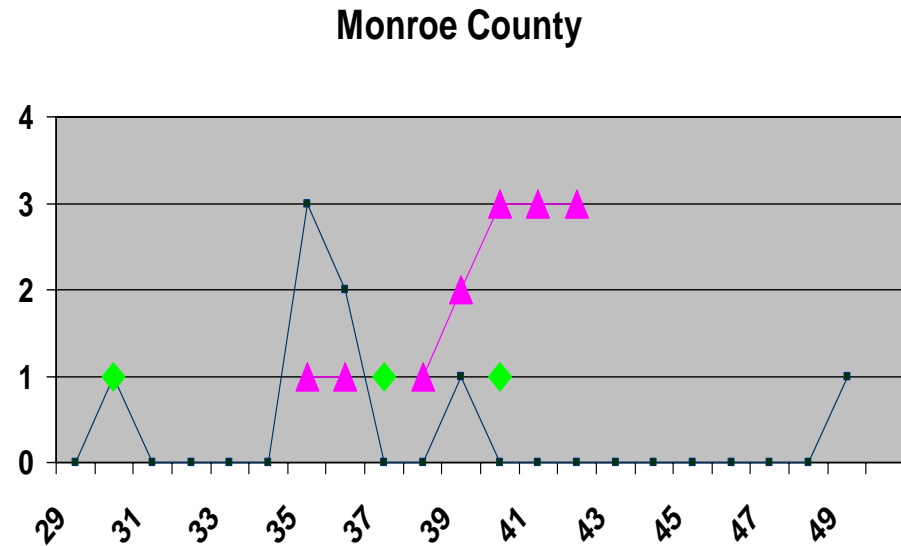
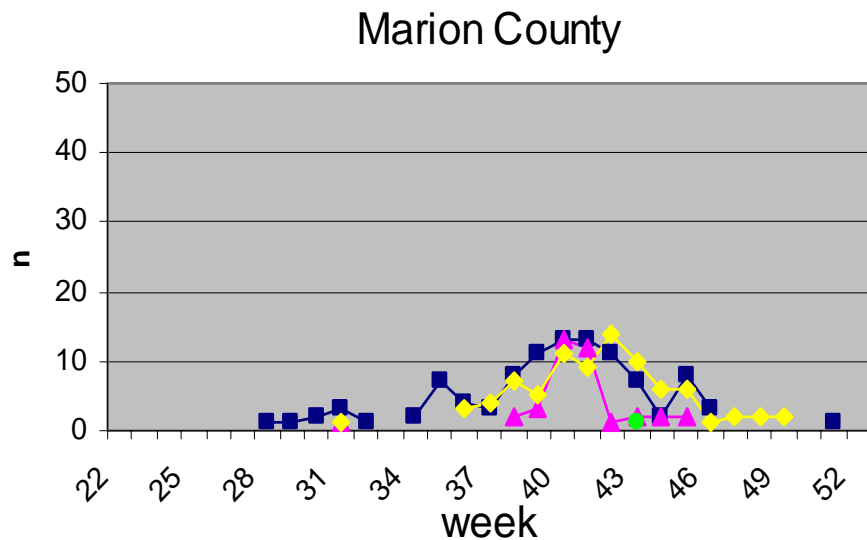
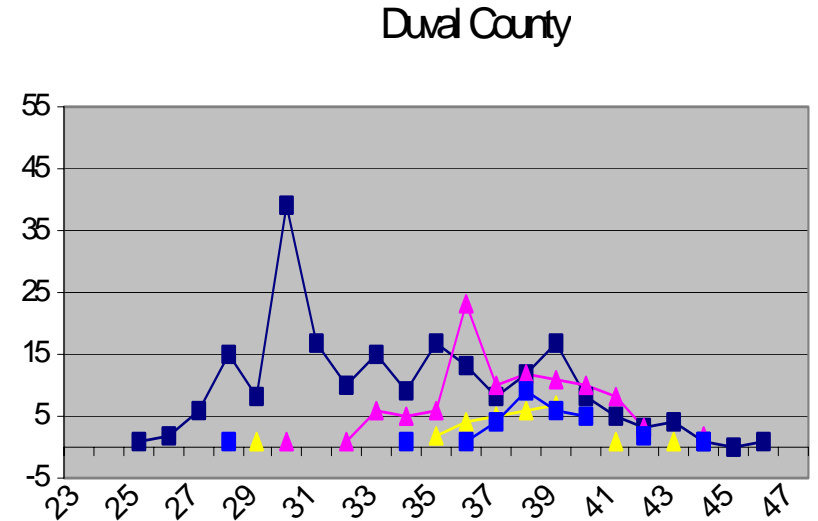
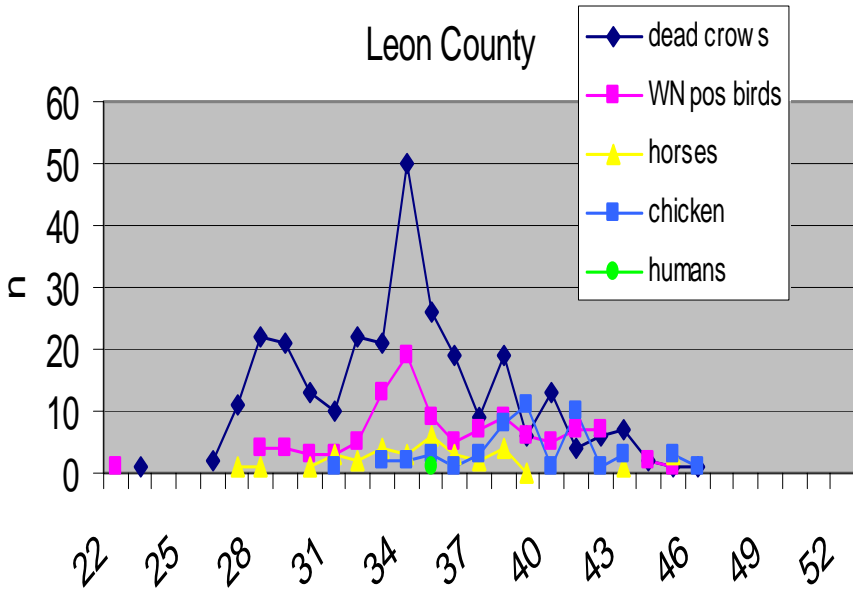


# Dead Crow Reports and WN Positive Tests, by week, Florida, 2001





# WN Virus Activity, Selected Florida Counties, 2001



# Bird-based Surveillance

---

- Avian mortality surveillance

- 1) dead bird sightings
- 2) virus testing



- Sensitive early detection system
- Almost all of the positive birds were found singly

- WEBBOARD

---

# Dead Bird Surveillance Results 2001



- 16,838 reports received
- All 67 counties
- 23,000+ individual birds
- >60 species
- 2,595 Crows
- 2,282 Jays

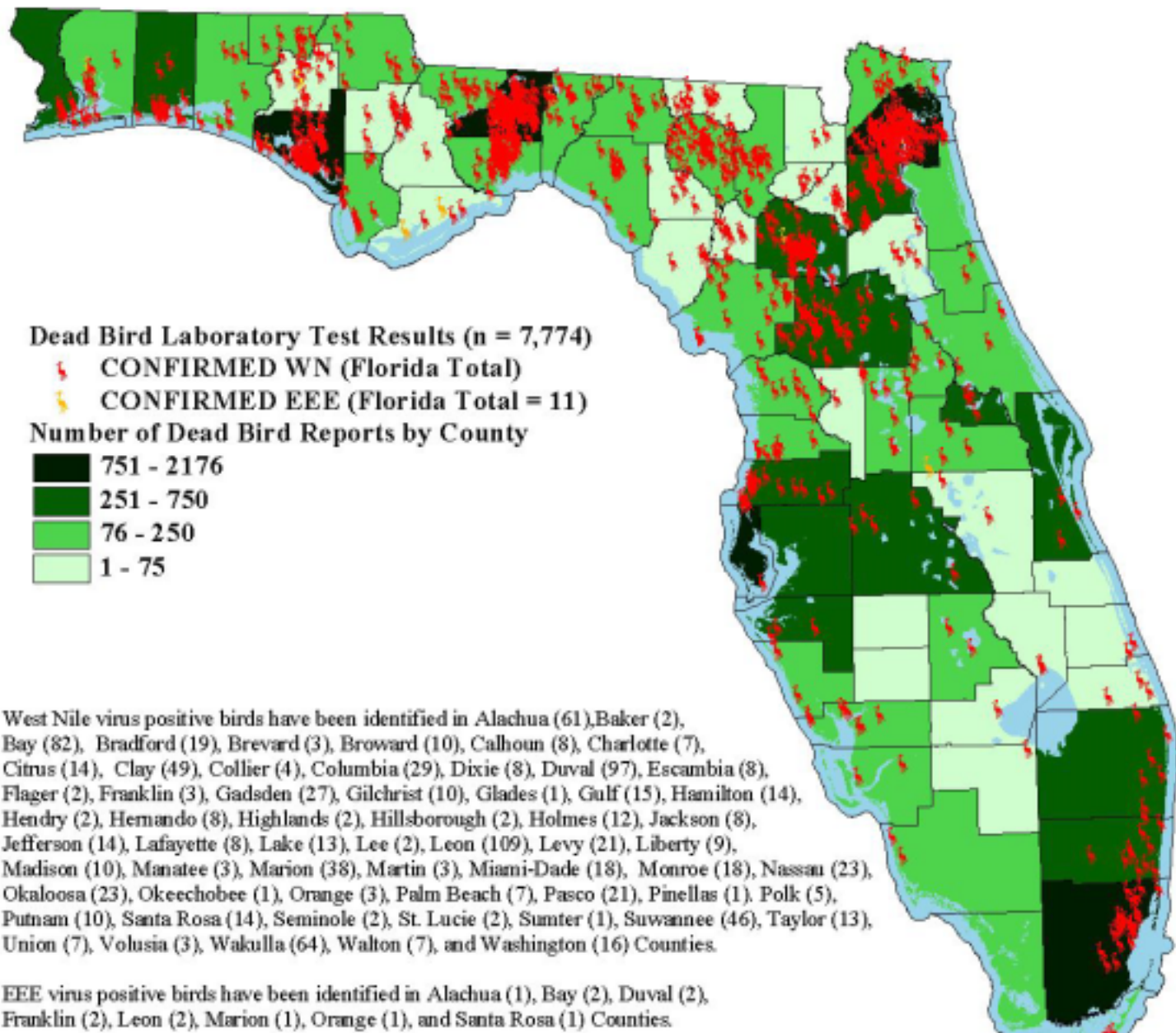
# Avian Mortality Surveillance

---

- Positive birds provided the first confirmation of viral activity in 54 of 67 counties
  - Dead bird reports correlated with human population
  - Dead crow reports correlated better with WN
  - Weekly dead crows/sq. mile predicted risk in NY; did not seem to in Florida.
-

# 2001 Florida Dead Bird Surveillance

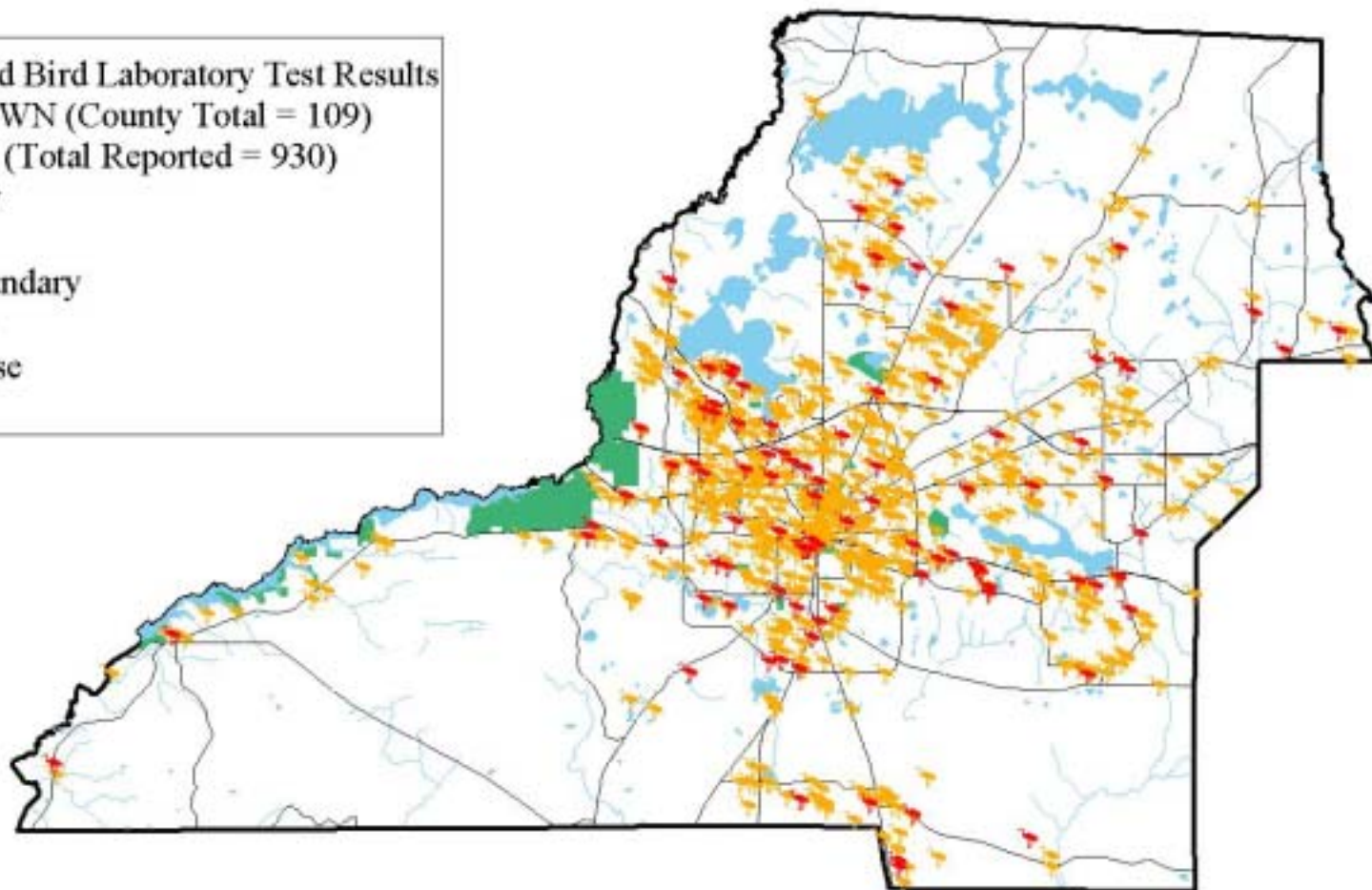
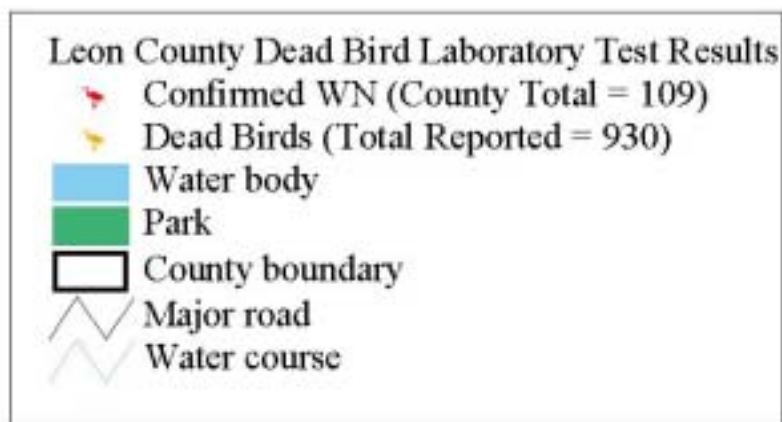
(Dead Bird Laboratory Results for 2001)





# Leon County Dead Bird Surveillance

(Reported Dead Birds and Confirmed West Nile Virus Bird Locations for 2001)



Florida Department of Health

Bureau of Epidemiology



0 2 4 6 Miles



1-353085

**Disclaimer:**  
This product is for reference purposes only and is not to be construed as a legal document. Any reliance on the information contained herein is at the user's own risk. The Florida Department of Health and its agents assume no responsibility for any use of the information contained herein or any loss resulting therefrom.  
Revised 10/15/01

# WN virus positive birds by identified species

<b>crow</b>	<b>408</b>	<b>812</b>	<b>50%</b>
<b>bluejay</b>	<b>218</b>	<b>751</b>	<b>29%</b>
<b>duck</b>	<b>8</b>	<b>54</b>	<b>15%</b>
<b>cardinal</b>	<b>16</b>	<b>164</b>	<b>10%</b>
<b>finch</b>	<b>18</b>	<b>199</b>	<b>9%</b>
<b>pigeon</b>	<b>19</b>	<b>216</b>	<b>9%</b>
<b>warbler</b>	<b>23</b>	<b>262</b>	<b>9%</b>
<b>grackle</b>	<b>11</b>	<b>135</b>	<b>8%</b>
<b>sparrow</b>	<b>17</b>	<b>215</b>	<b>8%</b>
<b>catbird</b>	<b>12</b>	<b>156</b>	<b>8%</b>
<b>dove</b>	<b>130</b>	<b>1793</b>	<b>7%</b>
<b>thrush</b>	<b>11</b>	<b>163</b>	<b>7%</b>
<b>mockingbird</b>	<b>17</b>	<b>262</b>	<b>6%</b>
<b>chicken</b>	<b>4</b>	<b>181</b>	<b>2%</b>
	<b>912</b>	<b>5363</b>	

**N tested =7,773**

**N pos. =1,127**

**Rate pos= 14%**



# Bird-based Surveillance

- Live bird surveillance

- Captive birds

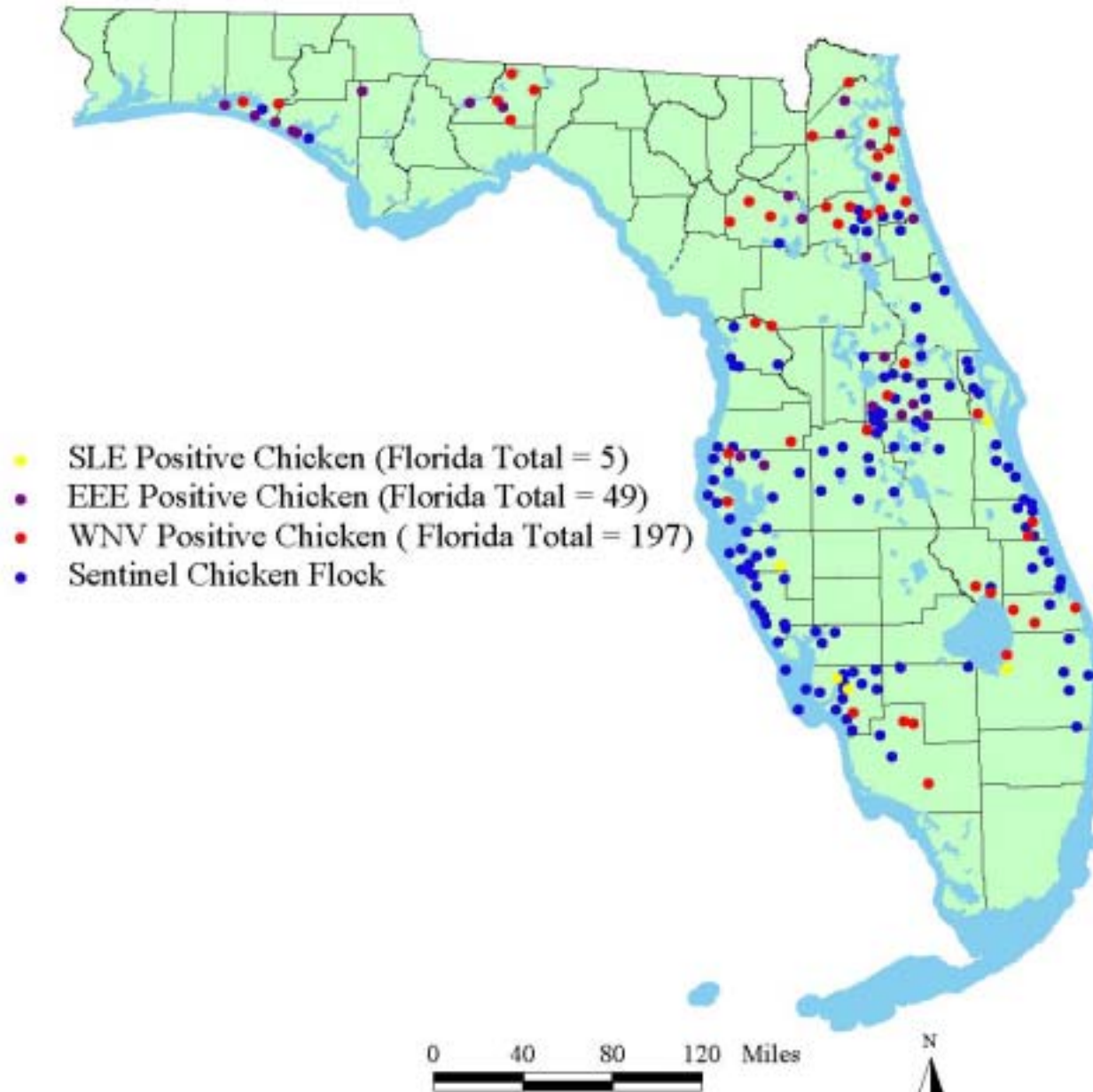
- Chickens preceded other cases in 3 counties

- Free-ranging birds

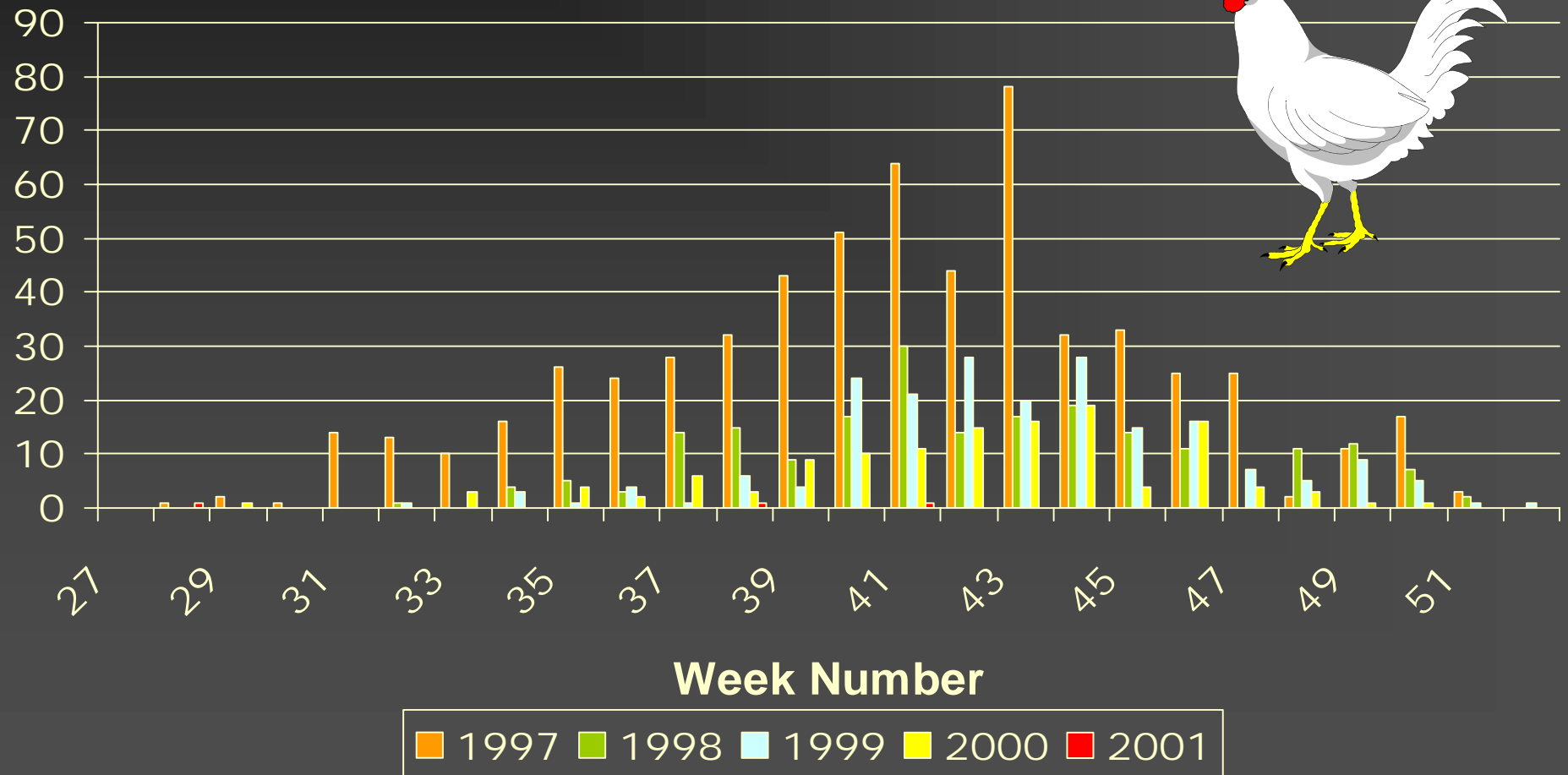
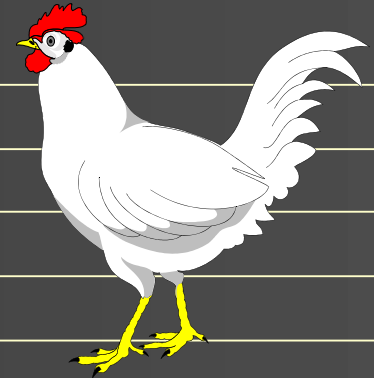
- Used in selected counties to help determine extent of virus transmission – *thank you CDC*



# 2001 Florida Sentinel Chicken Surveillance



# Number of Sentinel Chicken Seroconversions to SLE virus, July-December, 1997-2001, Florida



# Mosquito Surveillance

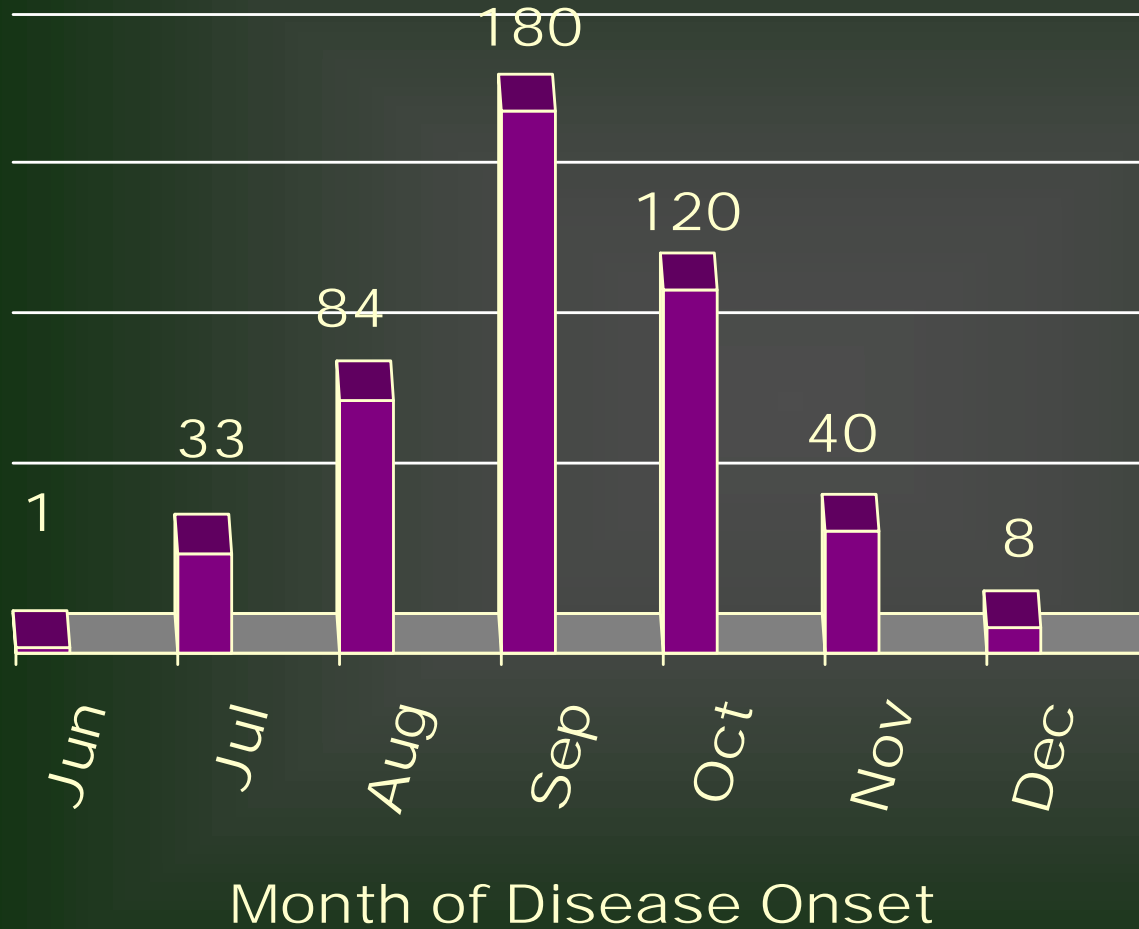
- 27 mosquito pools w/ WN virus
- *Culex*
  - *quinquefasciatus*
  - *nigripalpus*
  - *salinarius*
- *Culiseta*
  - *melanura*
- *Ochlerotatus*
  - *taeniorhynchus*
  - *atlanticus*
- *Anopheles*
  - *crucians*
  - *atropos*
- *Deinocerites*
  - *cancer*

# Equine Surveillance

---

- 469 cases
  - 40 counties
  - 56% of cases from Marion, Jefferson, Clay, Alachua, Leon and Duval Counties
  - Sensitive surveillance method
-

# Confirmed West Nile Virus Equine Cases, Florida, 2001

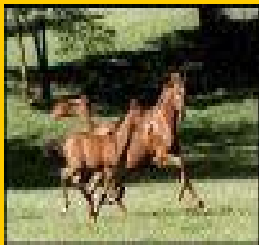
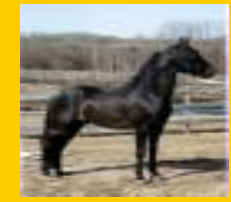
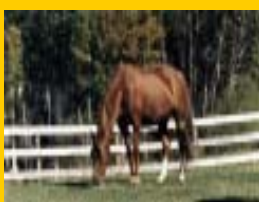
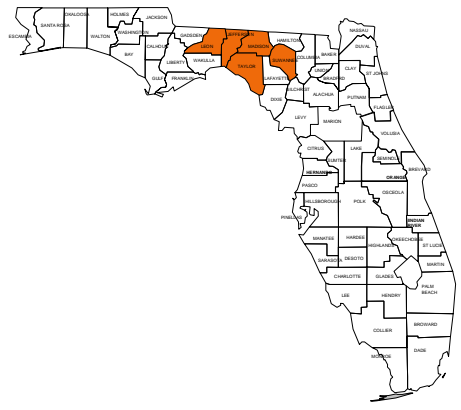


# WEST NILE VIRUS

June July Aug Sept Oct Nov Dec

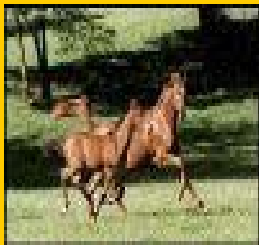
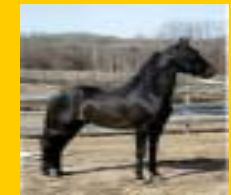
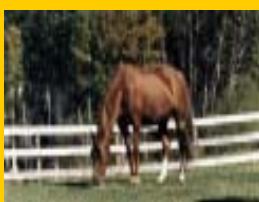
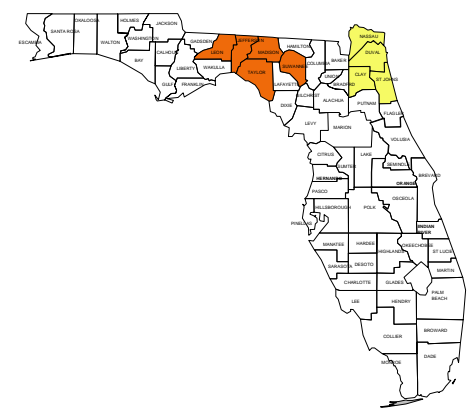
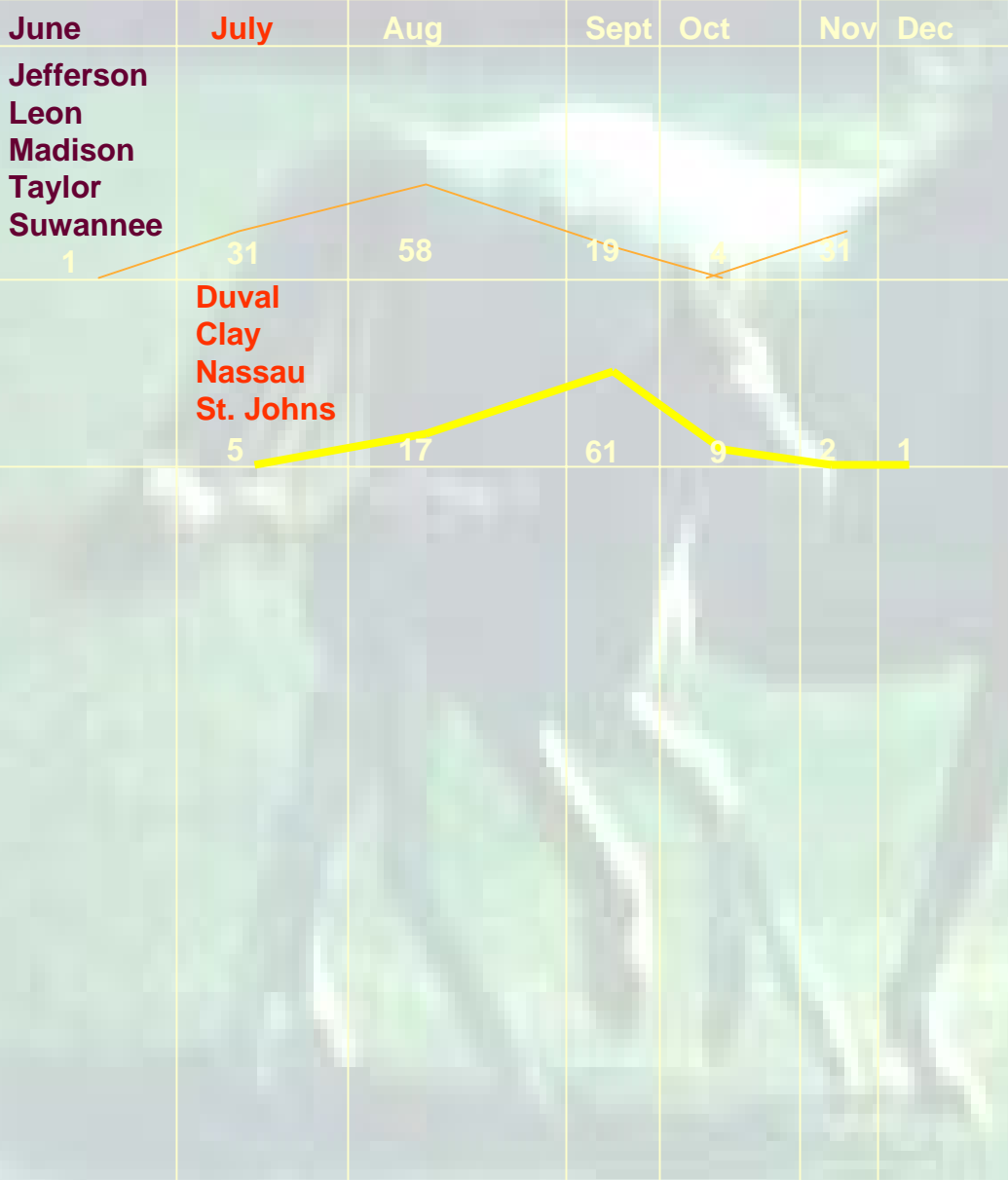
Jefferson  
Leon  
Madison  
Taylor  
Suwannee

1 31 58 19 4 31

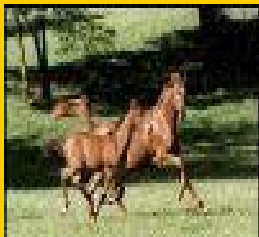
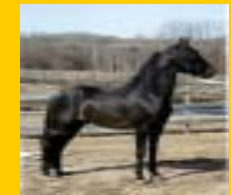
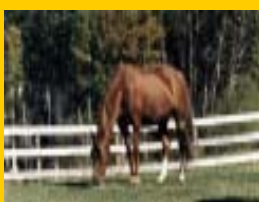
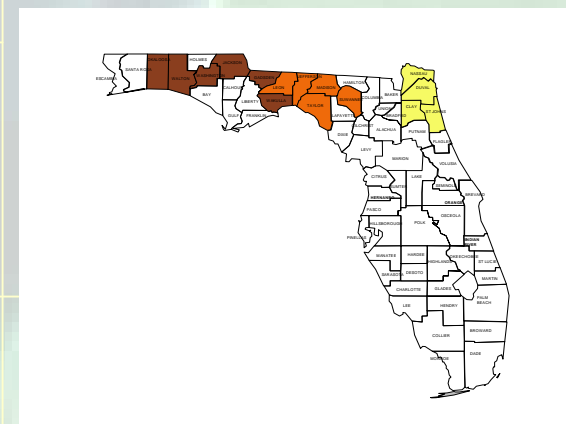
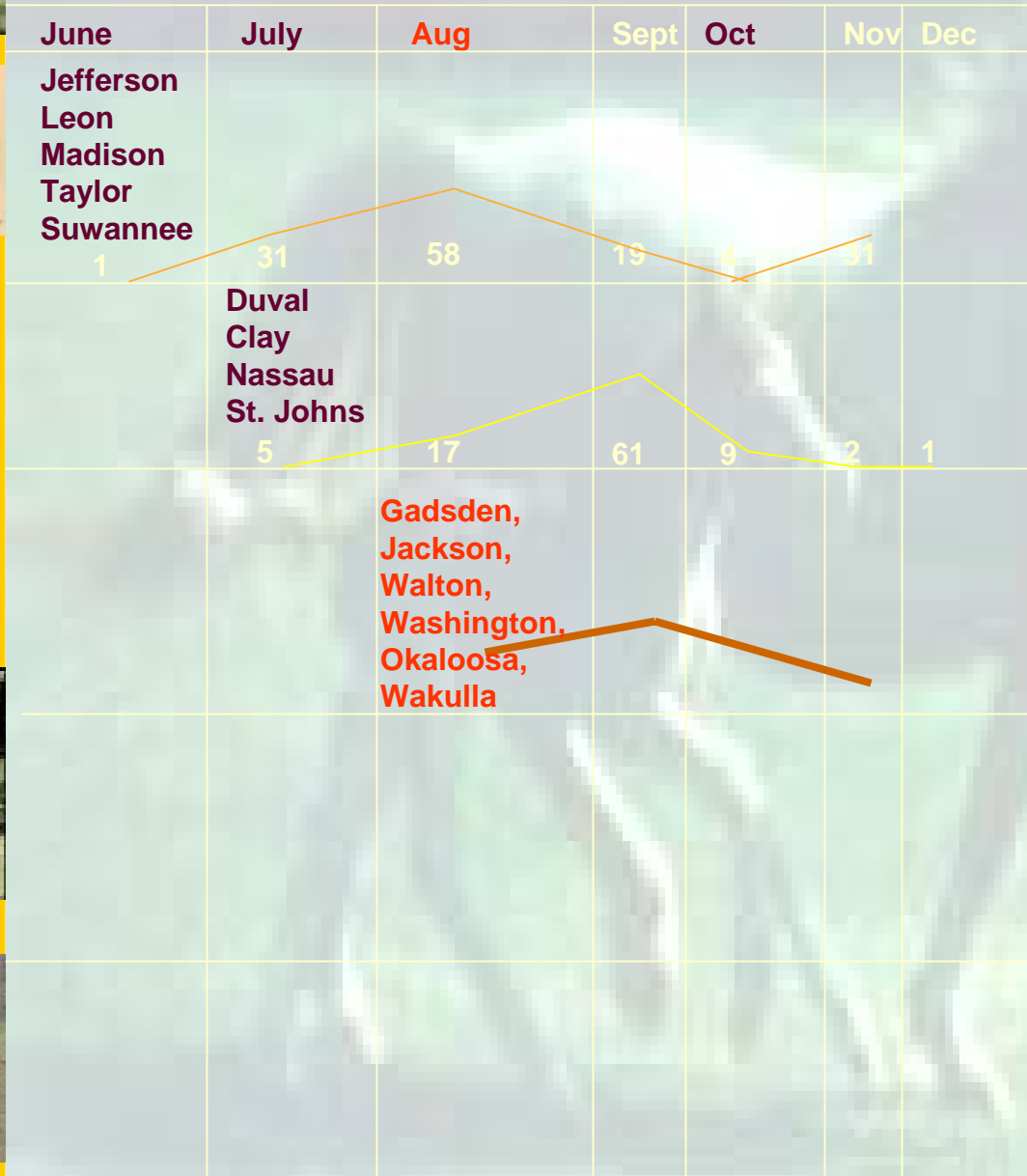




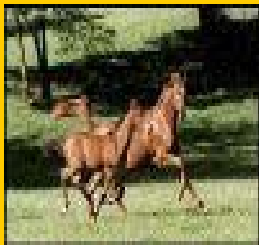
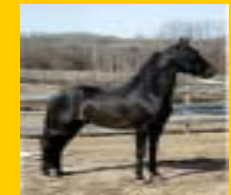
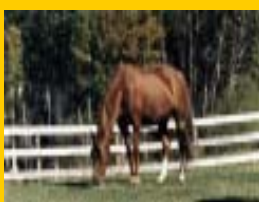
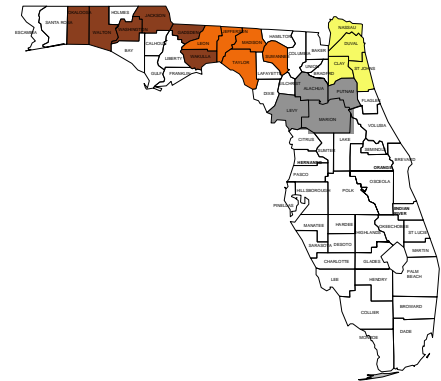
# WEST NILE VIRUS



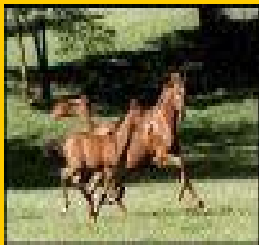
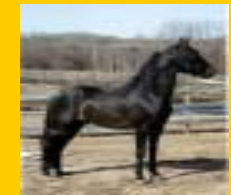
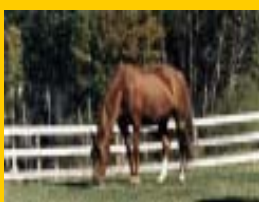
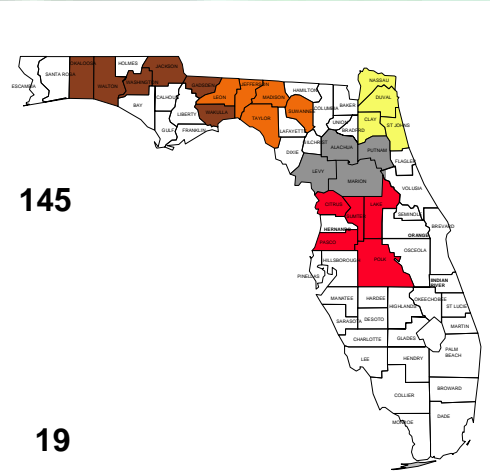
# WEST NILE VIRUS



# WEST NILE VIRUS



# WEST NILE VIRUS



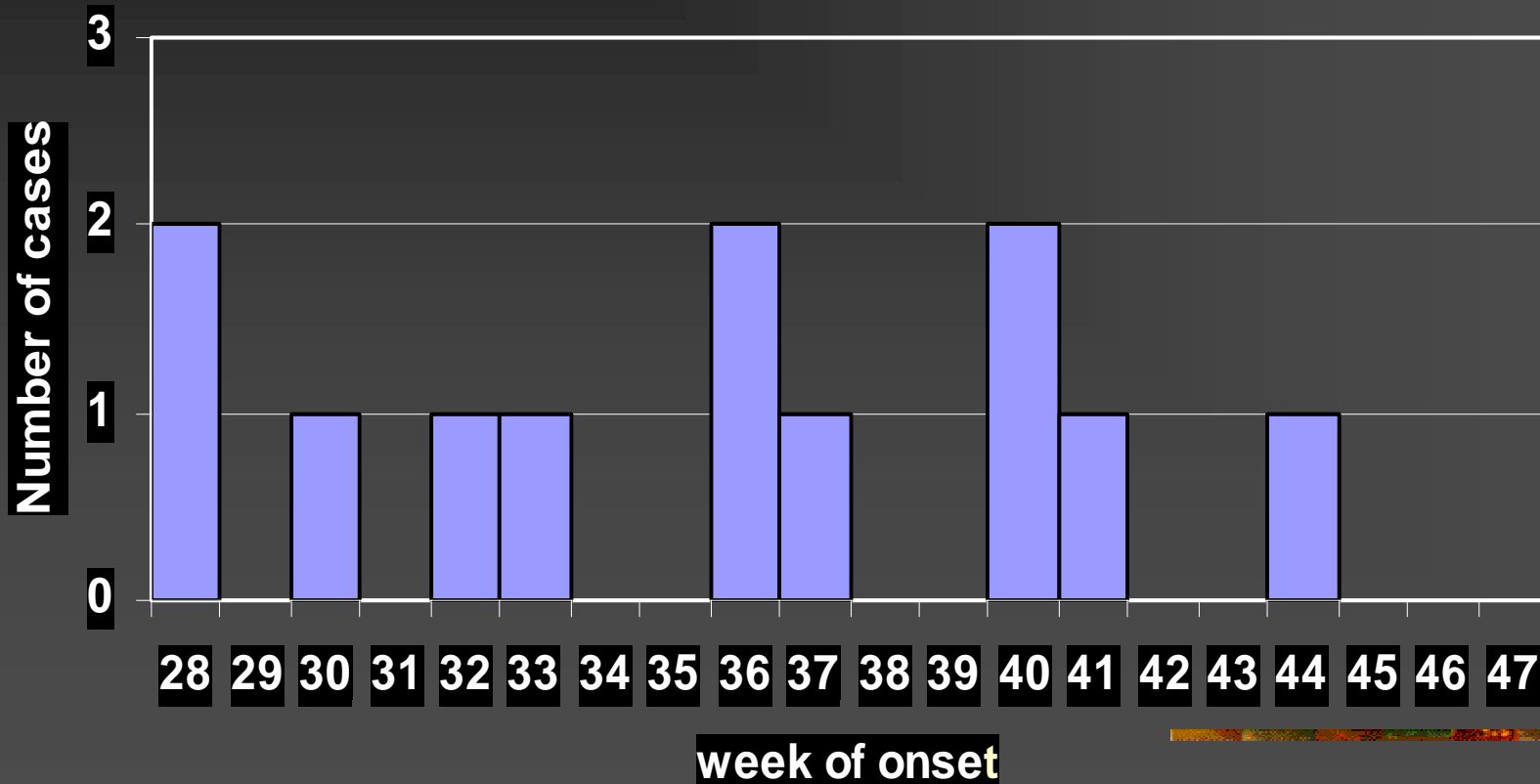
# Human Surveillance

---



- Younger than expected (range 19-73, mean 53.5)
  - Serosurveillance study in Madison County (population <20,000)
  - Geographically northern and extreme southern part of the state
-

# Human West Nile Encephalitis by week of onset, Florida, 2001



# Did virus detection by sentinel surveillance precede human cases?

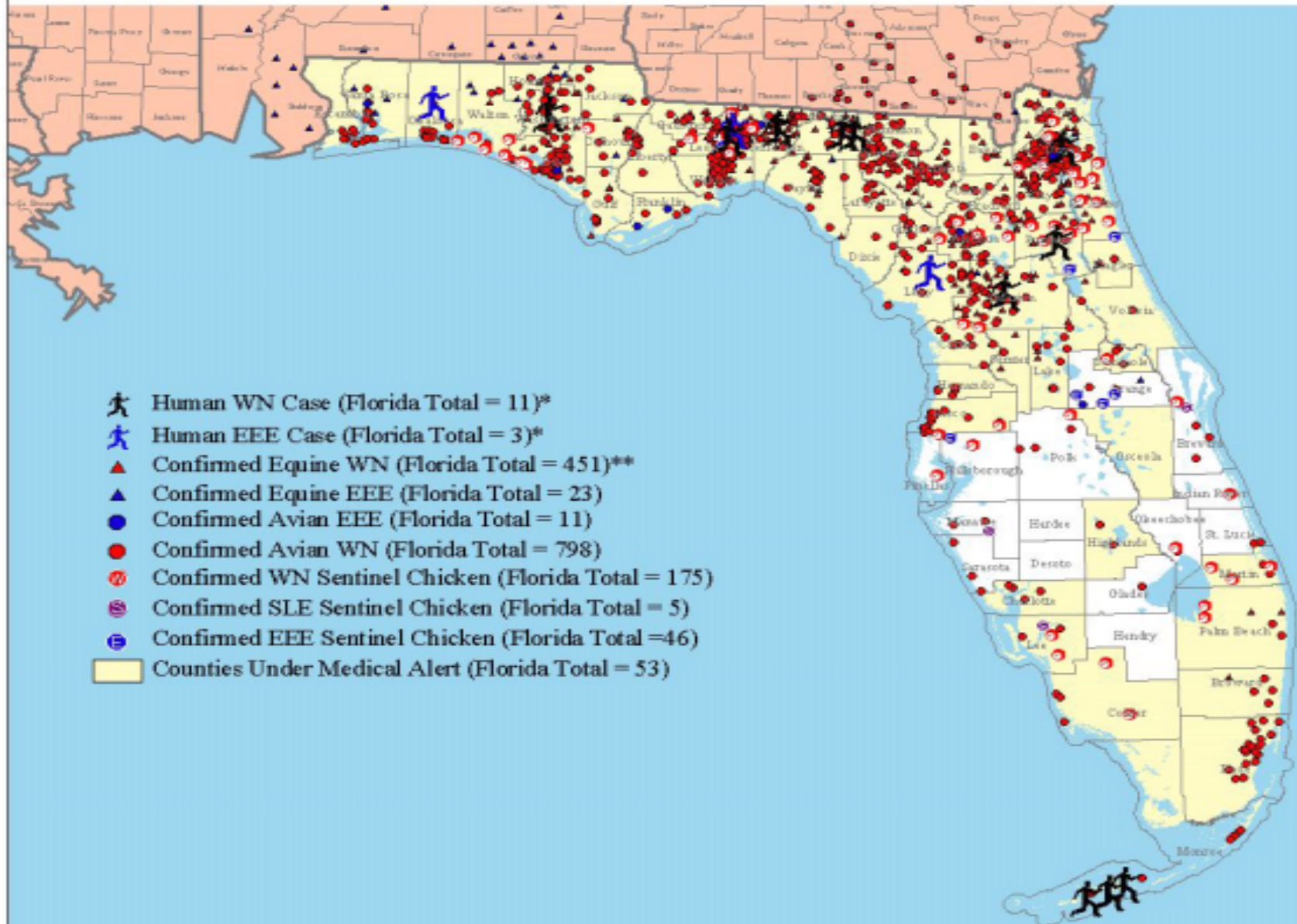
---

- Yes (Jefferson, Clay, Leon, Putnam, Washington, Marion and Palm Beach (7))
  - No (Madison, Monroe (5))
-



# Florida Comprehensive Arbovirus Surveillance

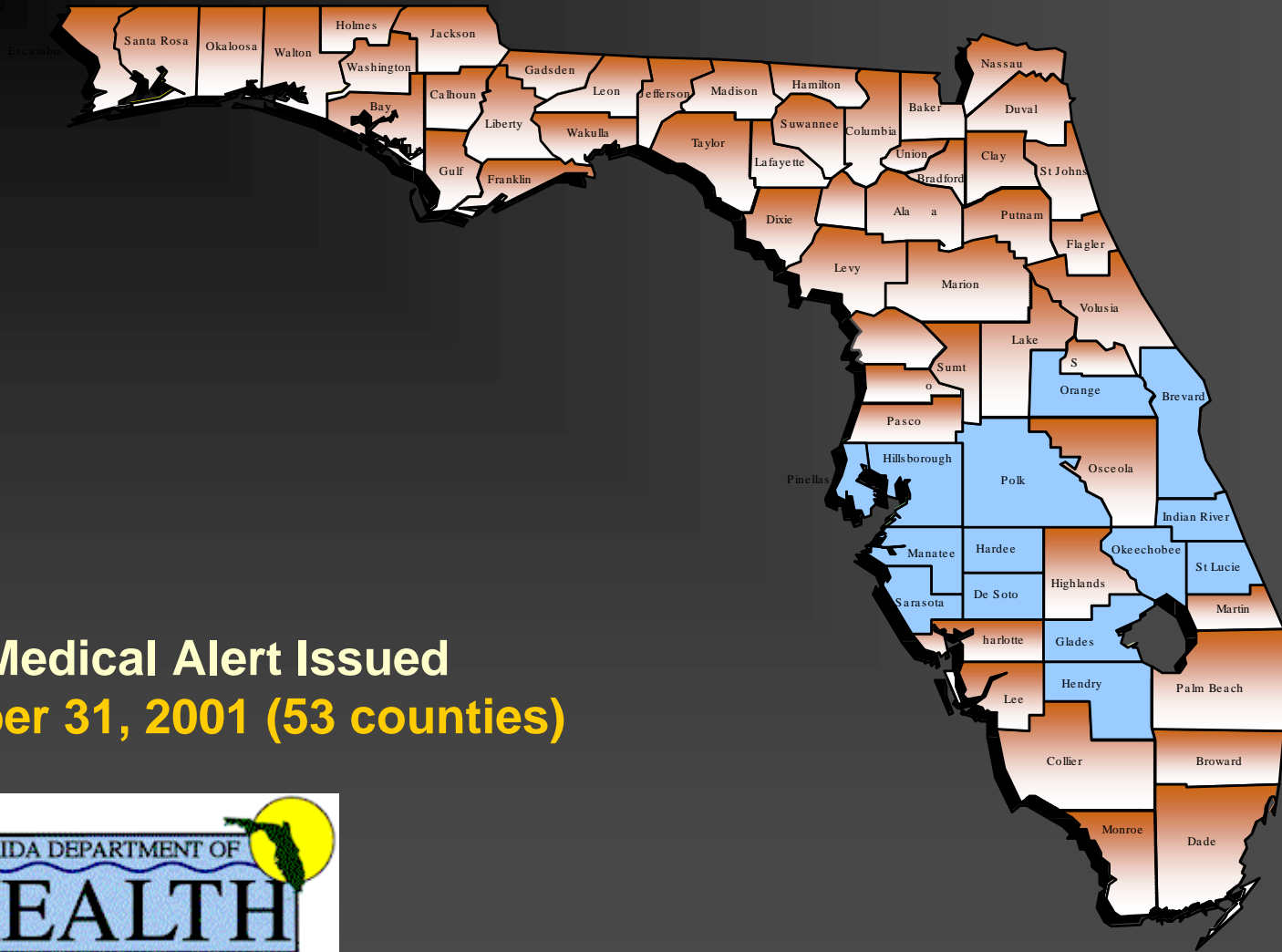
(Data collected January 1 - December 13, 2001)



# The Response

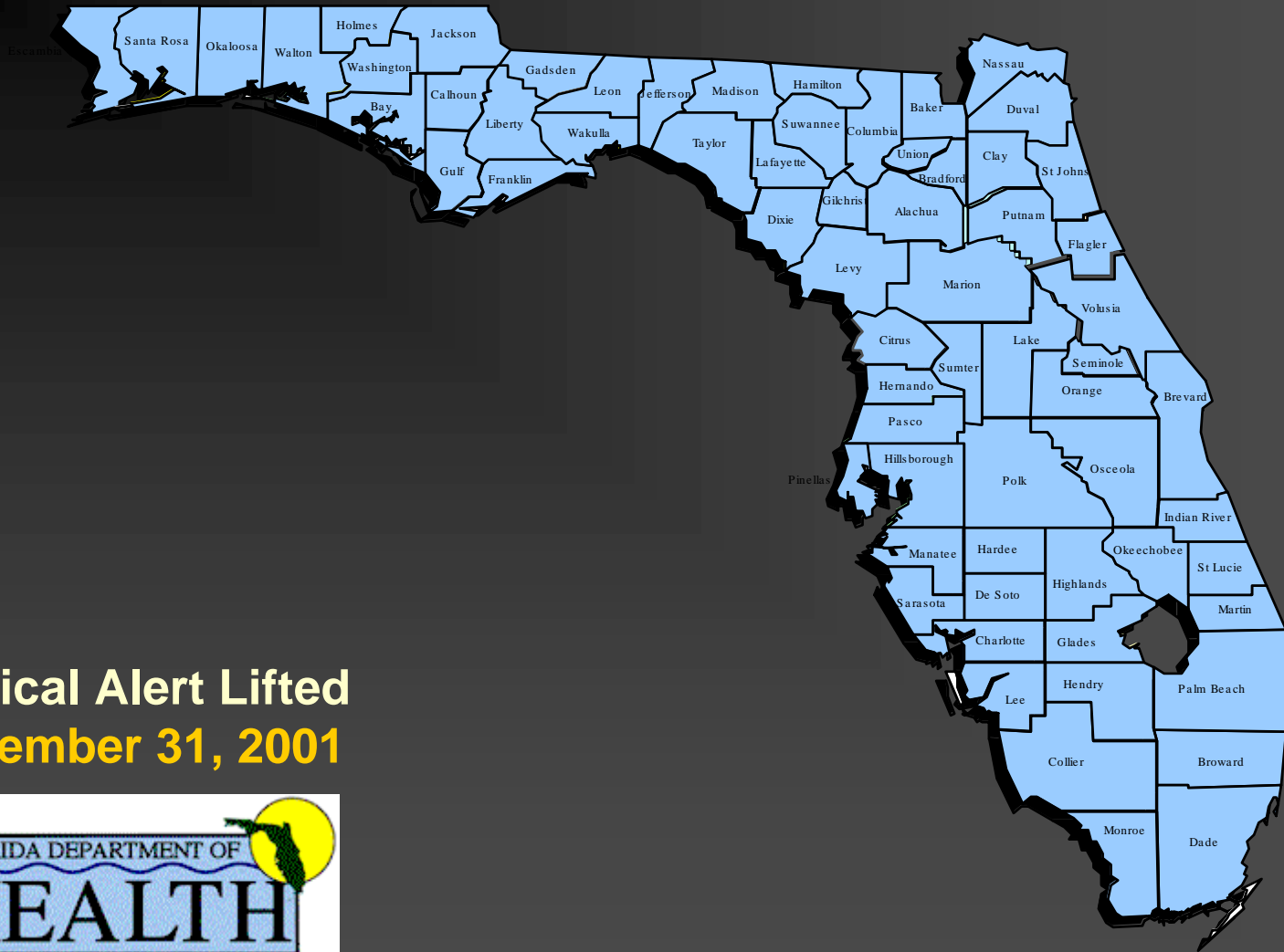
---

- Massive media campaign
    - Internal communication
      - Conference calls
      - Electronic mailings
    - External communication
      - Press releases
      - Hotline
      - Web information
  - Enhanced mosquito control
-



**Medical Alert Issued**  
**October 31, 2001 (53 counties)**





**Medical Alert Lifted**  
**December 31, 2001**



2001

# A hypothesis-generating season

