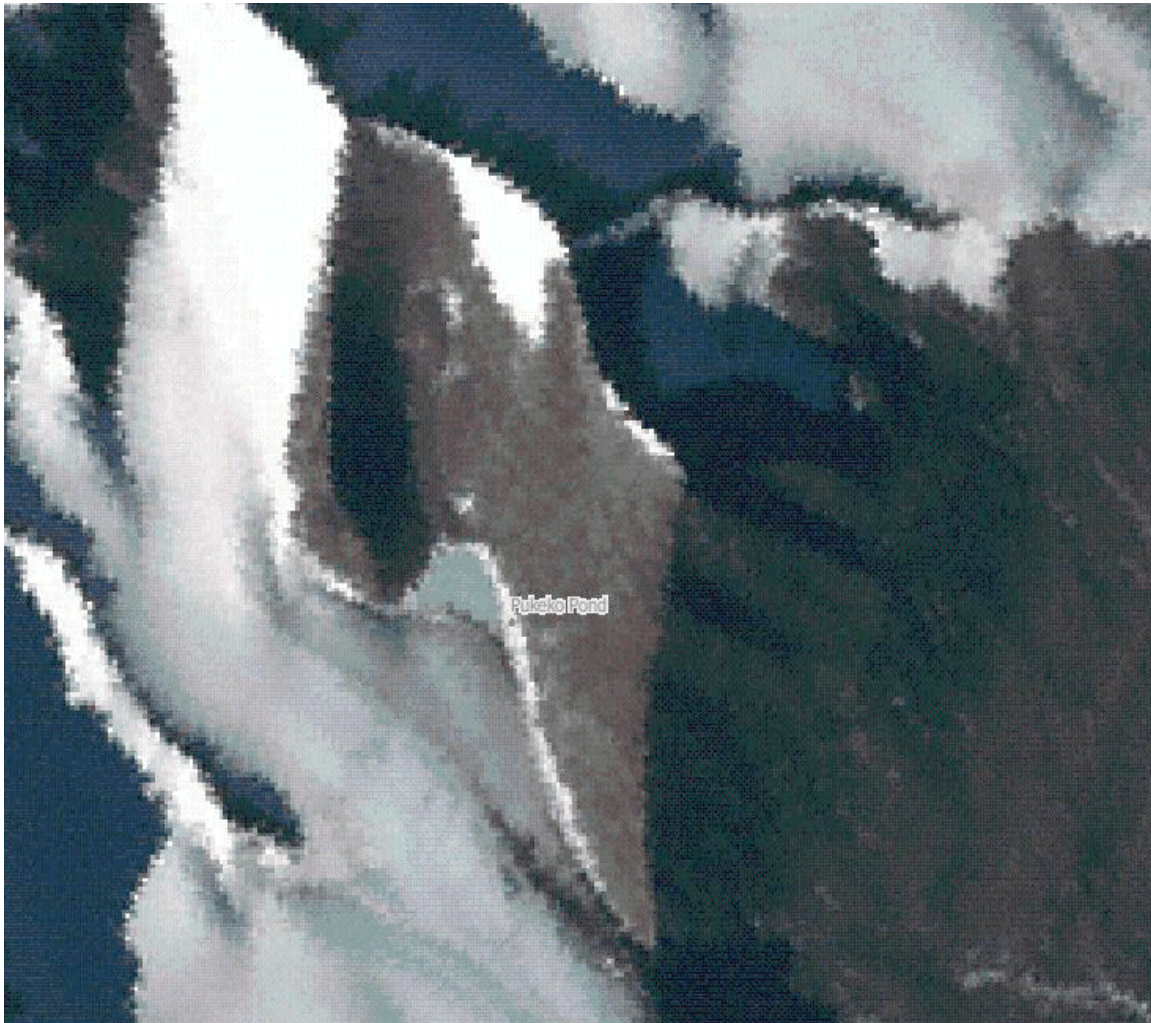
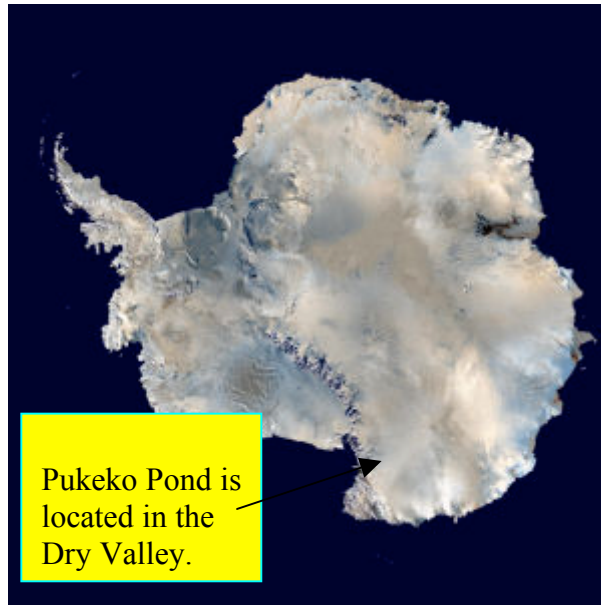


Team Member's Names: CHARLIE & TRAVIS
School: Mount Vernon Middle School, Mount Vernon, IA
Teacher: Mrs. Scarce

Proposal:
Pukeko Pond description from Lima-
A pond, 0.25 mile long, between Mount Loke and the west side of Denton Glacier in Asgard Range, McMurdo Dry Valleys. Named by the NZGB (1998) after a New Zealand water bird.

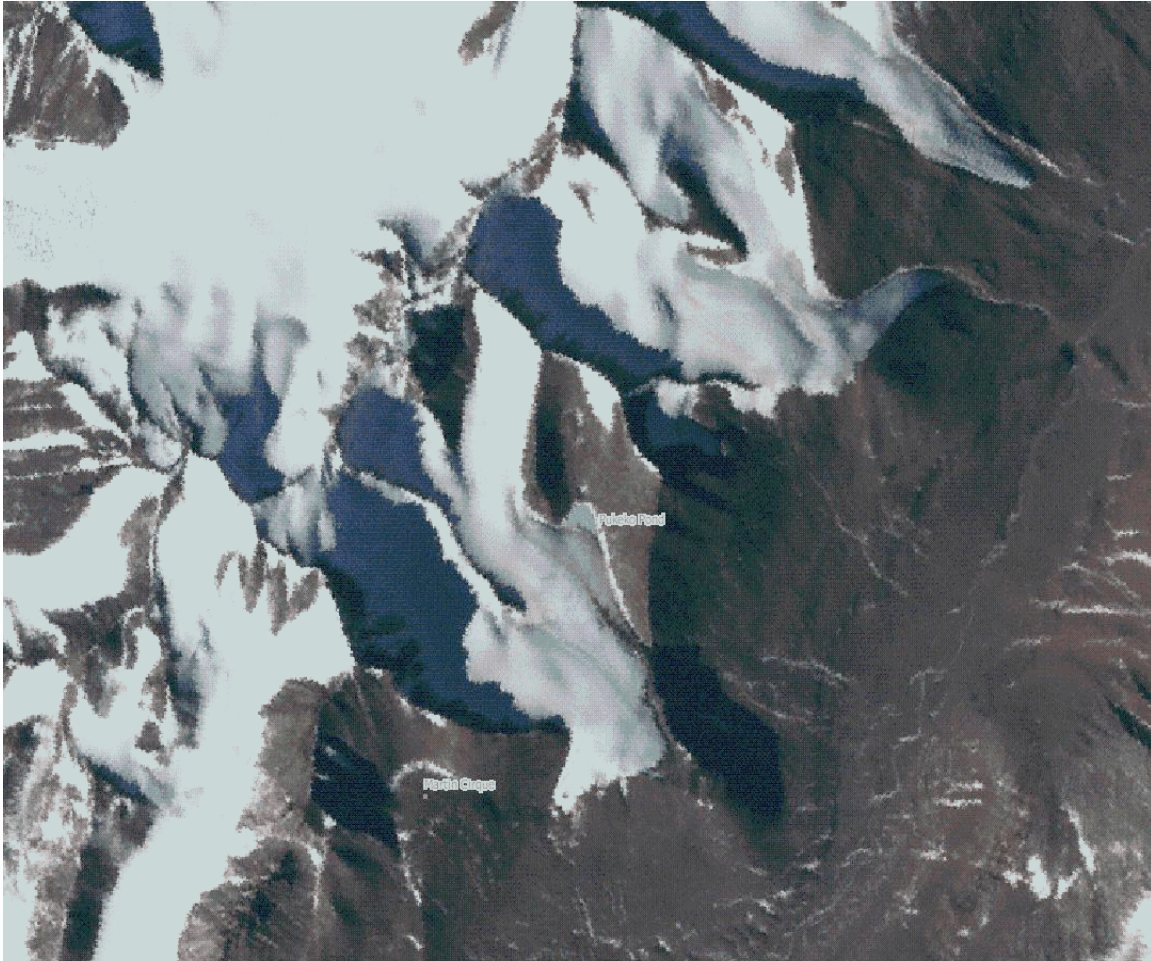


Pukeko Pond is located at 772900 south latitude and 1623400 east longitude.



We chose Pukeko Pond because we wanted to know if it is a frozen lake or it never freezes like Don Juan Pond and we would like to know if any life exists or ever did exist in Pukeko Pond. We found out that Don Juan Pond is covered in sodium chloride and calcium chloride and that makes it 18 times saltier than the Ocean except for The Dead Sea which is only 8 times saltier. We want to know how Pukeko Pond compares to Don Juan Pond.

Below is a LIMA image of Pukeko Pond showing the surrounding area.



We want to know if Pukeko Pond is frozen all the way to the bottom or if it or if it never freezes because it may have a very high level of salt or there could be a fumarole inside of the ground under the pond creating so much heat that it never freezes. We propose that we will make observations from space with satellites. They will tell us when the pond is frozen and with thermal infrared satellite will even tell us what temperature it is. We also make observations from the ground and send ROV under the ice to make more observations.

We think our team should be funded to investigate this part of Antarctica because the extreme ecosystem that exists may be similar to other planets. With the information we learn, we will learn how to deal with extreme environments.



Thank you for considering our proposal.