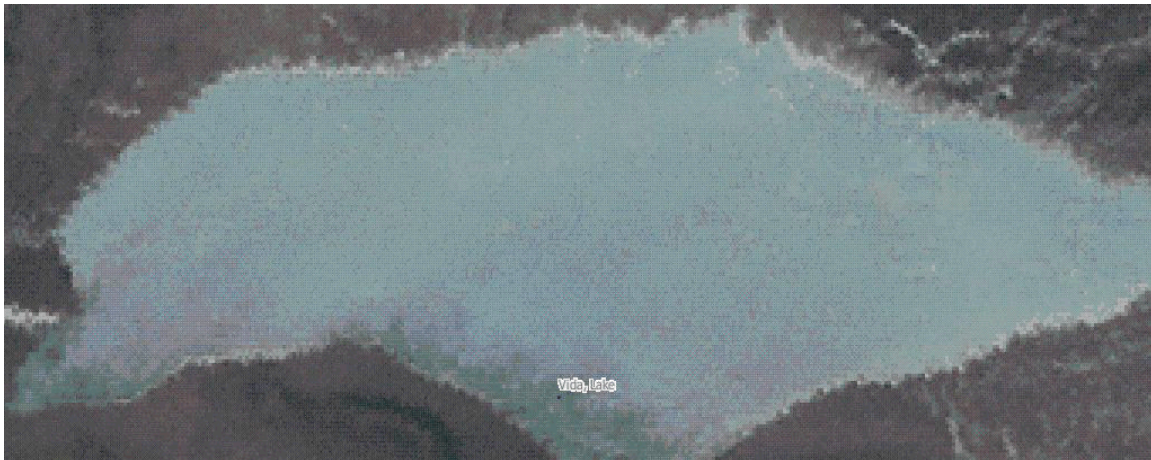


Team Member's Names: Caiden, John
School: Mount Vernon Middle School, Mount Vernon, IA
Teacher: Mrs. Scarce

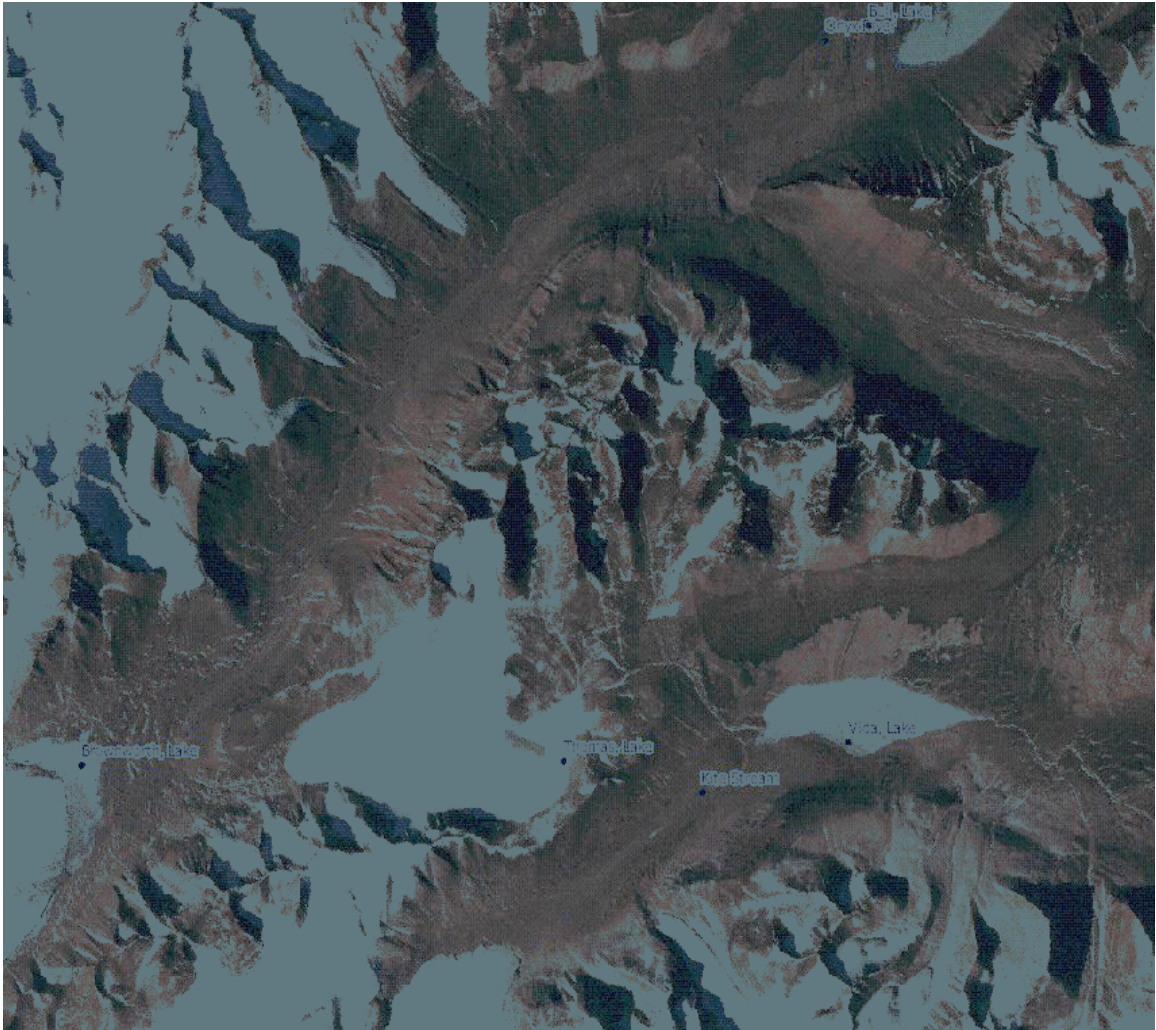
Proposal:

Our ice feature is Lake Vida. It is a medium sized lake in a low valley. We are not sure if it is frozen or not. It is in Victoria Valley. According to Lima it is- A lake lying N of Mount Cerberus in the Victoria Valley of Victoria Land. It also has the an Antarctic stream flowing into it named Kite Stream. Named by the VUWAE (1958-59) after Vida (Vaida), a sledge dog of the BrAE, 1910-13.



Its latitude is 77S and the longitude is 161E. It is located in Victoria Valley in the Dry Valleys. That is where our ice feature is located.

Notice Onyx River on the map below. It is the only river in Antarctica. The lake at the bottom of the picture is Lake Vida with kite stream.





It is scientifically interesting because it is a lake in Antarctica. We chose it because we thought that that was “cool”. We also think that if it is not all the way frozen scientists should send an ROV to take some underwater samples of ice, water, and possible living organisms under the ice. It could also tell us how high the salinity is in the water. It would also be interesting to take ice core samples of this feature.

We think that in order to create this ice feature there would have to have been glaciers that were moving above Victoria Valley. The melting ice traveled down the valley and then froze at the bottom of it. From this happening it would have created Lake Vida. We would like to figure out if this is the correct origin. If not we would like to figure out the real origin. Now we learned from the LIMA webchat that the origin might be where enough ice melted and it found a local depression and made Lake Vida.

An underwater probe can help us figure out if global warming is affecting the amount of water in the lake each year by measuring the amount of chemicals in the lake each year and the temperature throughout the year. We learned from the webchat that underwater probes can be put in lakes that are completely frozen with “Hotsies” that melt a hole in the ice. Information from the probe can tell people that global warming is a very big deal so they will stop polluting so much. We could also look what is in Kite stream to figure out if there is life in Lake Vida or anything else interesting in this lake.

Another concern is what life is like on other planets. We will have more people looking for life on other planets with extreme environments like Antarctica. So then if we can have more people live on Antarctica we can have people live on other planets.



Thank you for considering our proposal! 😊