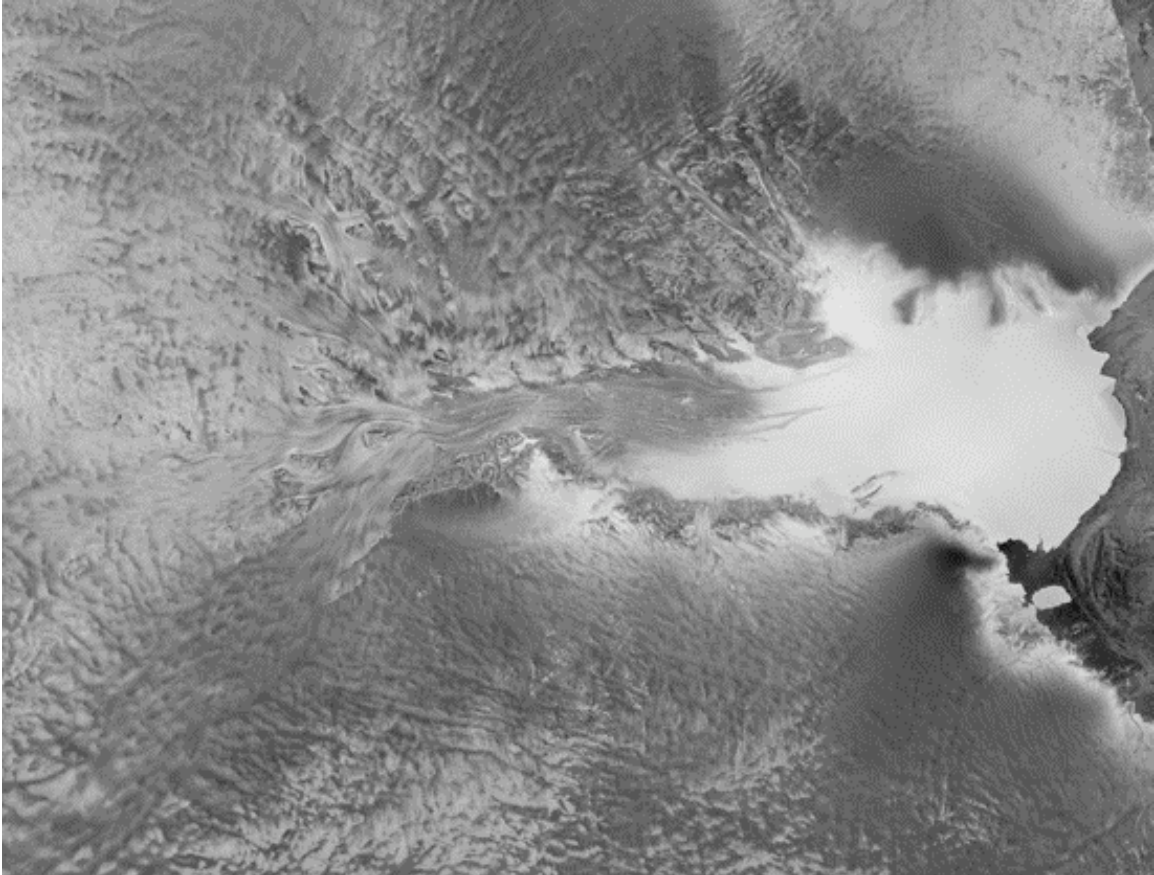


Proposal for Research at Mawson Escarpment  
Submitted by Kendall, Anna, Diamon, Madison  
Location: 73 S 68 E



This Mawson Escarpment is next to a glacier path, the Lambert Glacier. It is a major glacier in Antarctica.

We picked this because we wanted to know how it was formed. We think the glacier pushed it to the side when it was moving down. We want to know how old it is and find out more about the glacier. Why is it so big?

We think it's safe enough to use humans to explore it. It could help us understand what is happening there on the escarpment and in the glacier. We would need lots of time because it's very long.