



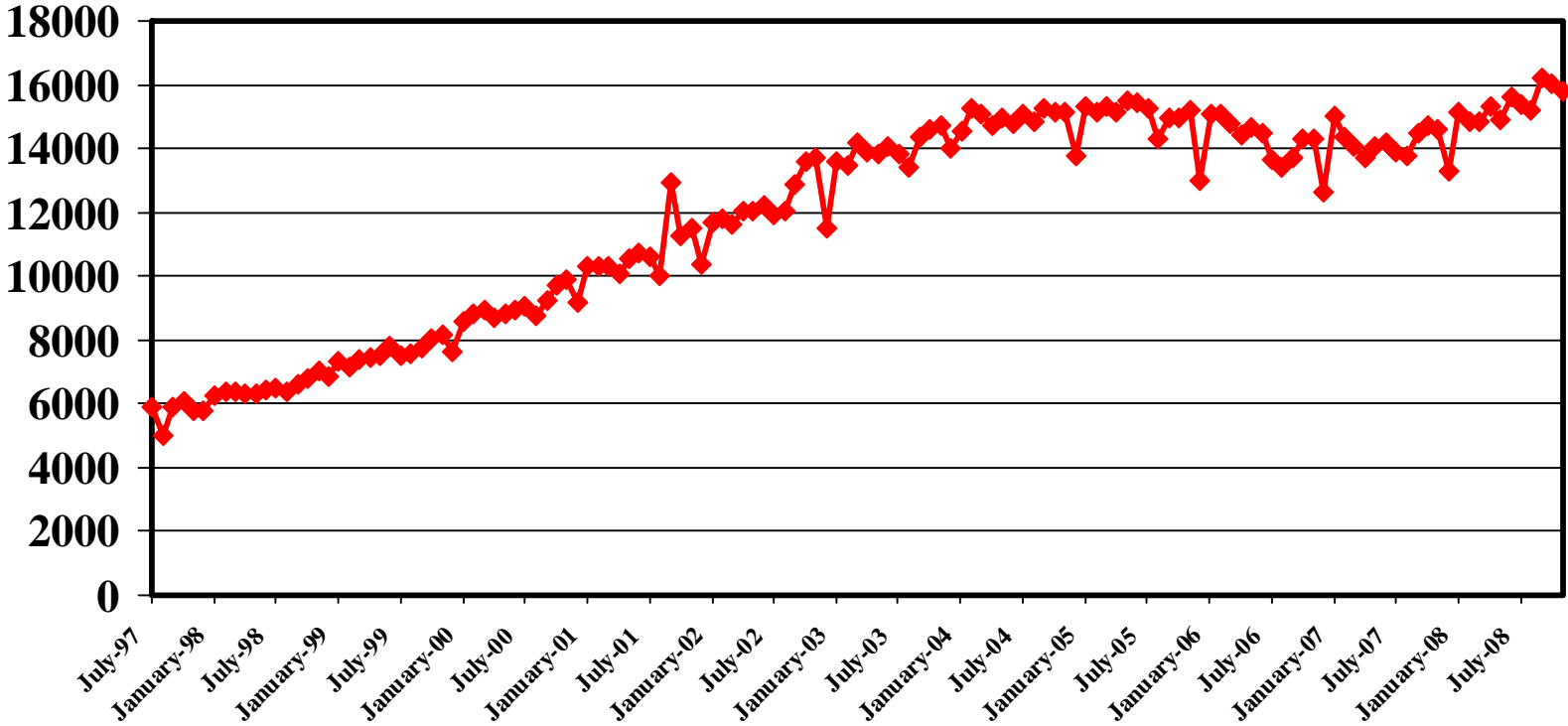
VRE Performance Measures

Last Updated December 23, 2008

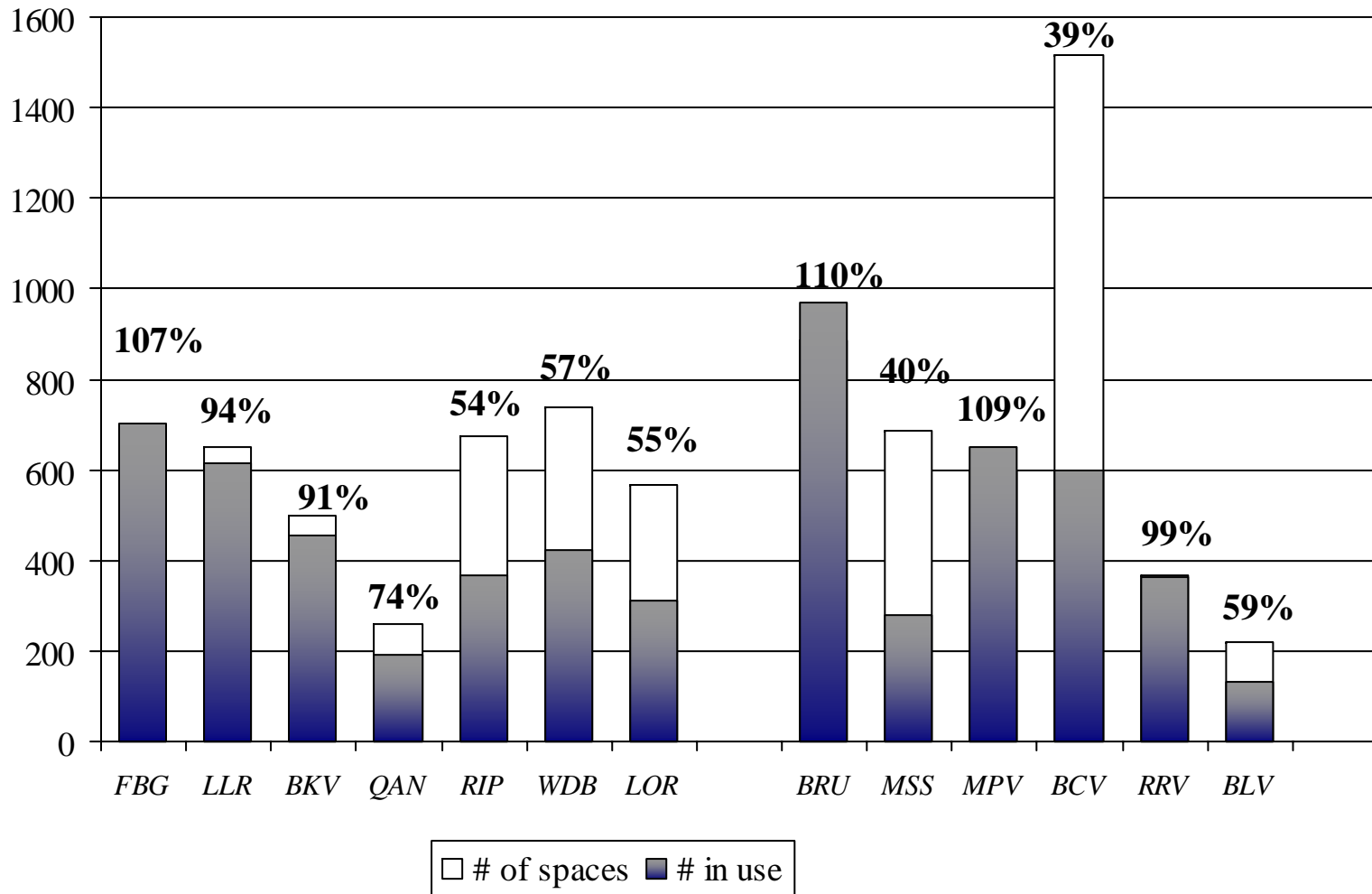
With statistics through
November 30, 2008

VRE Ridership

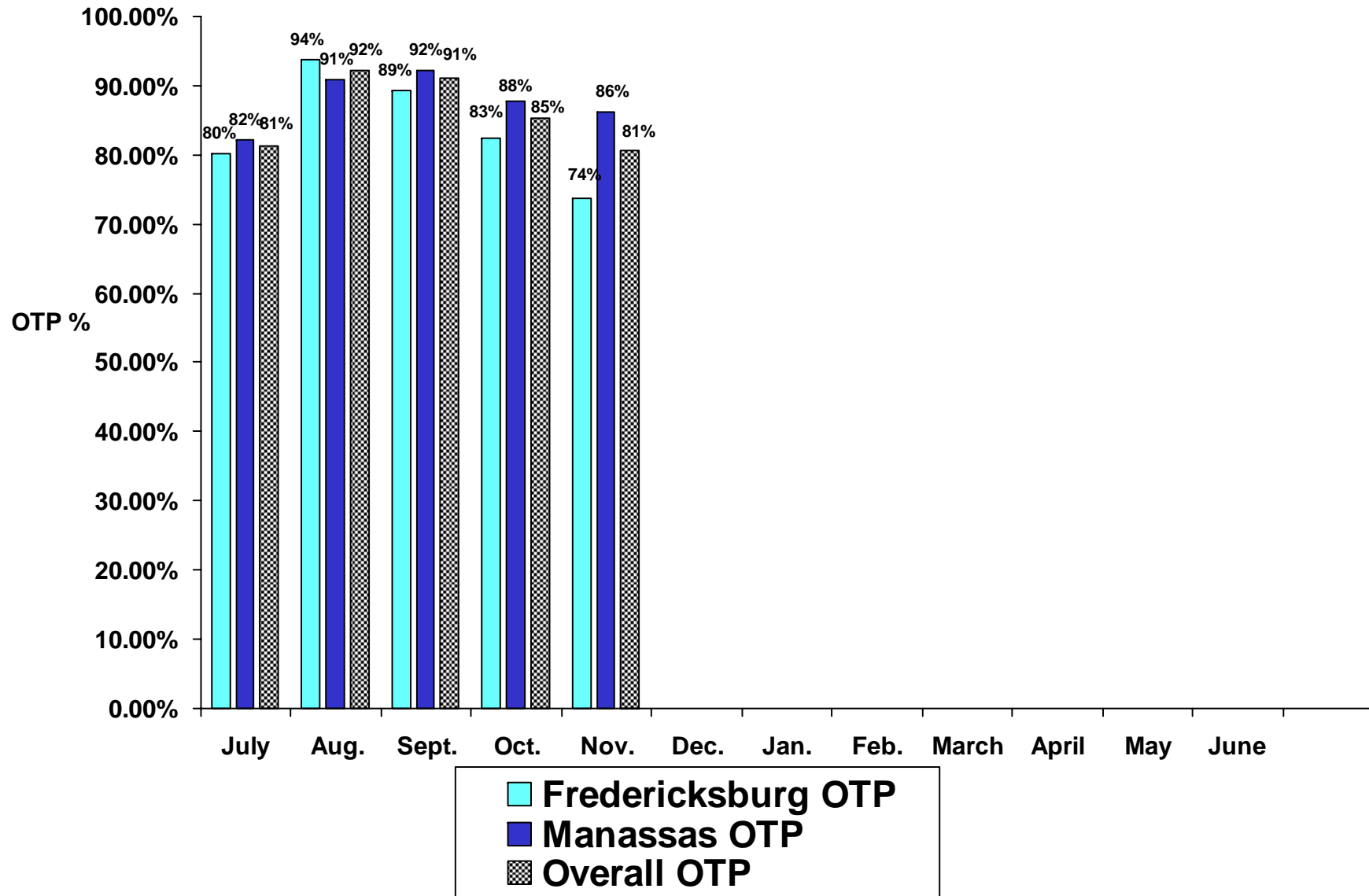
(July 1997 – November 2008)



Parking Lot Utilization: November 2008

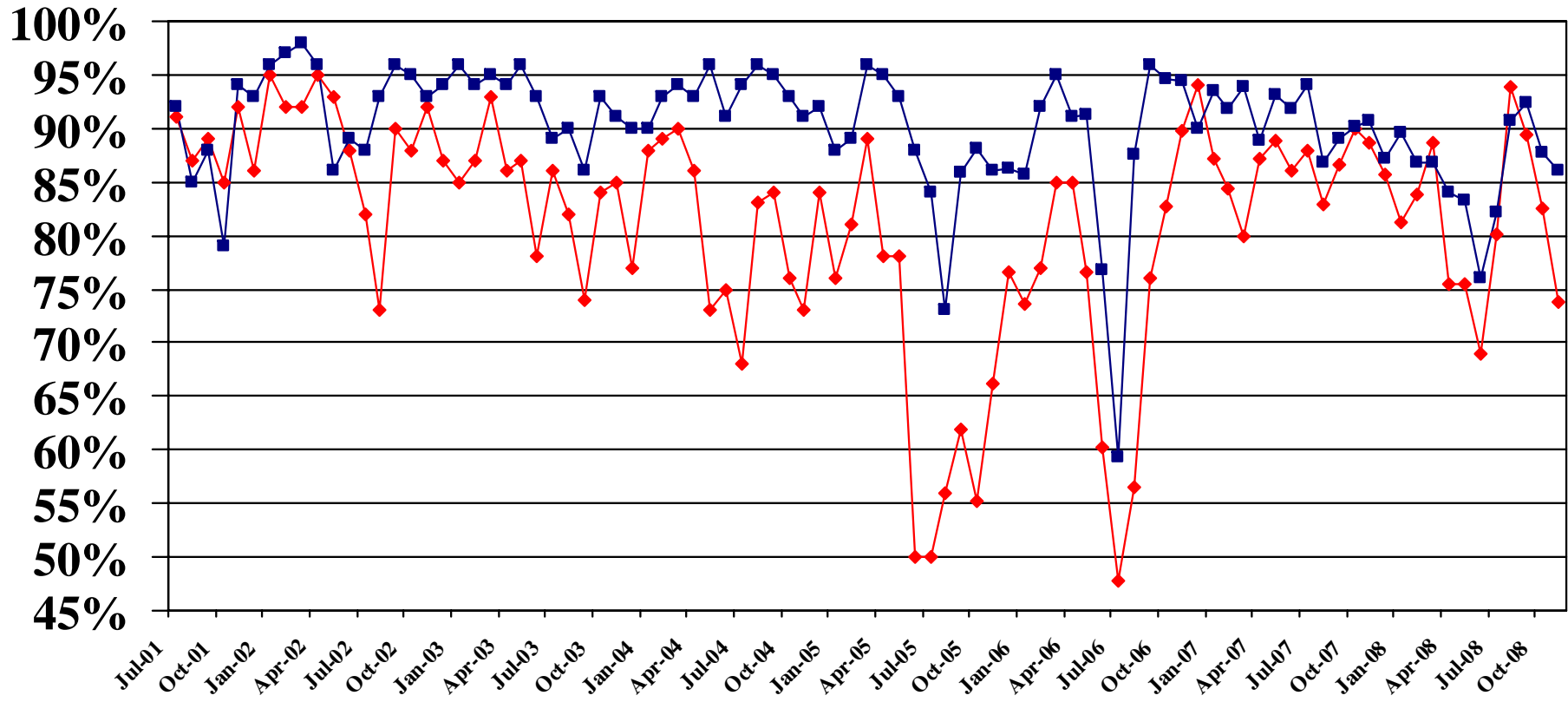


Average On-Time Performance FY-2009



On-Time Performance

July 2001 – November 2008



—◆— Fredericksburg Line —■— Manassas Line

Ridership Growth

	MANASSAS			FREDERICKSBURG				
Current Month	Avg Daily FY2008	Avg Daily FY2009	% change	Avg Daily FY2008	Avg Daily FY2009	% change	Current Total	% change
July	6513	7003	7.52%	7393	8388	13.46%	15391	10.68%
August	6405	6885	7.49%	7379	8316	12.70%	15201	10.28%
September	6847	7495	9.46%	7652	8720	13.96%	16215	11.84%
October	6973	7491	7.43%	7754	8538	10.11%	16029	8.84%
November	6894	7330	6.32%	7707	8439	9.50%	15769	8.00%
December	6081			7235			0	
January	6978			8148			0	
February	6842			8018			0	
March	6812			8050			0	
April	6988			8324			0	
May	6832			8094			0	
June	7123			8504			0	
Average growth			7.65%			11.94%		9.93%

*Ridership figures are shown in passenger trips. Includes Amtrak cross honor train riders.

**Average daily ridership for May 2008 does not include 5/30/08 due to planned service disruption.

Manassas Line Capacity

Train #	# of seats	Daily Average	% use	Mid Week	% use	Peak %
322	774	377	49%	421	54%	6%
321	774	6	1%	6	1%	0%
332	774	478	62%	532	69%	7%
333	774	654	84%	719	93%	8%
324	873	529	61%	598	68%	8%
335	873	315	36%	354	41%	4%
326	798	738	92%	787	99%	6%
325	798	194	24%	231	29%	5%
336	798	11	1%	12	2%	0%
329	798	756	95%	809	101%	7%
328	1077	671	62%	749	70%	7%
331	1077	701	65%	802	74%	9%
330	807	552	68%	619	77%	8%
327	807	651	81%	730	90%	10%
338	807	4	0%	5	1%	0%
337	807	136	17%	145	18%	1%

Fredericksburg Line Capacity

Train #	# of seats	Daily Average	% use	Mid Week	% use	Peak %
300	1107	791	71%	915	83%	11%
307	1107	897	81%	1073	97%	16%
302	798	583	73%	675	85%	12%
305	798	639	80%	708	89%	9%
304	873	701	80%	826	95%	14%
301	873	231	26%	315	36%	10%
309	873	655	75%	742	85%	10%
306	873	584	67%	711	81%	15%
303	873	690	79%	806	92%	13%
308	675	498	74%	597	88%	15%
311	675	486	72%	579	86%	14%
310	522	343	66%	406	78%	12%
313	522	226	43%	267	51%	8%